

	BLOCK A				BLOCK B			
	Office NSF	GSF	FAR	Floorplate	Office NSF	GSF	FAR	Floorplate
Roof Level				5,677 SF				7,092 SF
Level 06		5,677 SF	2,021 SF	11,144 SF		7,092 SF	2,427 SF	20,793 SF
Level 05	10,576 SF	11,144 SF	11,144 SF	12,786 SF	20,102 SF	20,793 SF	20,793 SF	16,372 SF
Level 04	12,218 SF	12,786 SF	12,786 SF	14,563 SF	15,681 SF	16,372 SF	16,372 SF	17,891 SF
Level 03	13,995 SF	14,563 SF	14,563 SF	16,805 SF	17,200 SF	17,891 SF	17,891 SF	19,546 SF
Level 02	14,541 SF	15,109 SF	15,109 SF	17,503 SF	18,855 SF	19,546 SF	19,546 SF	19,546 SF
Level 01	4,603 SF	5,171 SF	5,171 SF	5,171 SF	4,751 SF	5,442 SF	5,442 SF	5,442 SF
Lower Level	0 SF	21,402 SF	16,369 SF	21,402 SF			See Block A	See Block A
TOTAL	55,933 SF	85,852 SF	77,163 SF	105,051 SF	76,589 SF	87,136 SF	82,471 SF	106,682 SF

Office NSF (Level 02-05)	123,168 SF
Office NSF (Level 01)	9,354 SF
Total Office NSF	132,522 SF
Total Office GSF	173,393 SF
Total Office Floorplate	212,138 SF

Total Parking Count	322 Spaces
Total Parking SF	121,979 SF
Total Parking GSF	131,587 SF
Total Parking Floorplate	139,005 SF

Total FAR	161,716 SF
Total GSF	304,980 SF
Total Floorplate	351,143 SF

Leftover FAR
0 SF

(Max FAR Allowed: 161,716 SF)

(Max FAR Allowed: 161,716 SF)

Surface Parking

13 Spaces

Parking Garage

	Parking Spaces	Parking SF	Core SF	GSF	FAR	Floorplate
Roof				7,418 SF	0 SF	7,418 SF
P Level 06/ Roof Mech	0 Spaces		327 SF	7,864 SF	0 SF	7,864 SF
P Level 05	32 Spaces	10,773 SF	309 SF	11,082 SF	309 SF	11,082 SF
P Level 04	73 Spaces	23,393 SF	287 SF	23,680 SF	287 SF	23,680 SF
P Level 03	73 Spaces	23,393 SF	287 SF	23,680 SF	287 SF	23,680 SF
P Level 02	61 Spaces	23,076 SF	287 SF	23,363 SF	287 SF	23,363 SF
P Level 01	39 Spaces	23,693 SF	287 SF	23,980 SF	228 SF	23,980 SF
Lower Level	31 Spaces	17,651 SF	287 SF	17,938 SF	279 SF	17,938 SF
TOTAL	309 Spaces	121,979 SF	2,071 SF	131,587 SF	1,677 SF	139,005 SF

Guard House

Office Usable SF	Guard	GSF	FAR	Floorplate
0 SF	405 SF	405 SF	405 SF	405 SF
0 SF	405 SF	405 SF	405 SF	405 SF

ARQUITECTONICA

2900 Oak Avenue, Miami, FL 33133
T 305.372.1812 F 305.372.1175

ALL DESIGNS INDICATED IN THESE DRAWINGS ARE PROPERTY OF ARQUITECTONICA INTERNATIONAL CORP. NO COPIES, TRANSMISSIONS, REPRODUCTIONS OR ELECTRONIC MANIPULATION OF ANY PORTION OF THESE DRAWINGS IN THE WHOLE OR IN PART ARE TO BE MADE WITHOUT THE EXPRESS OF WRITTEN AUTHORIZATION OF ARQUITECTONICA INTERNATIONAL CORP. DESIGN INTENT SHOWN IS SUBJECT TO REVIEW AND APPROVAL OF ALL APPLICABLE LOCAL AND GOVERNMENTAL AUTHORITIES HAVING JURISDICTION. ALL COPYRIGHTS RESERVED © 2021. THE DATA INCLUDED IN THIS STUDY IS CONCEPTUAL IN NATURE AND WILL CONTINUE TO BE MODIFIED THROUGHOUT THE COURSE OF THE PROJECTS DEVELOPMENT WITH THE EVENTUAL INTEGRATION OF STRUCTURAL, MEP AND LIFE SAFETY SYSTEMS. AS THESE ARE FURTHER REFINED, THE NUMBERS WILL BE ADJUSTED ACCORDINGLY.

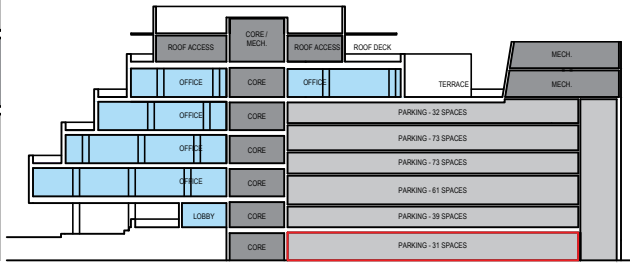
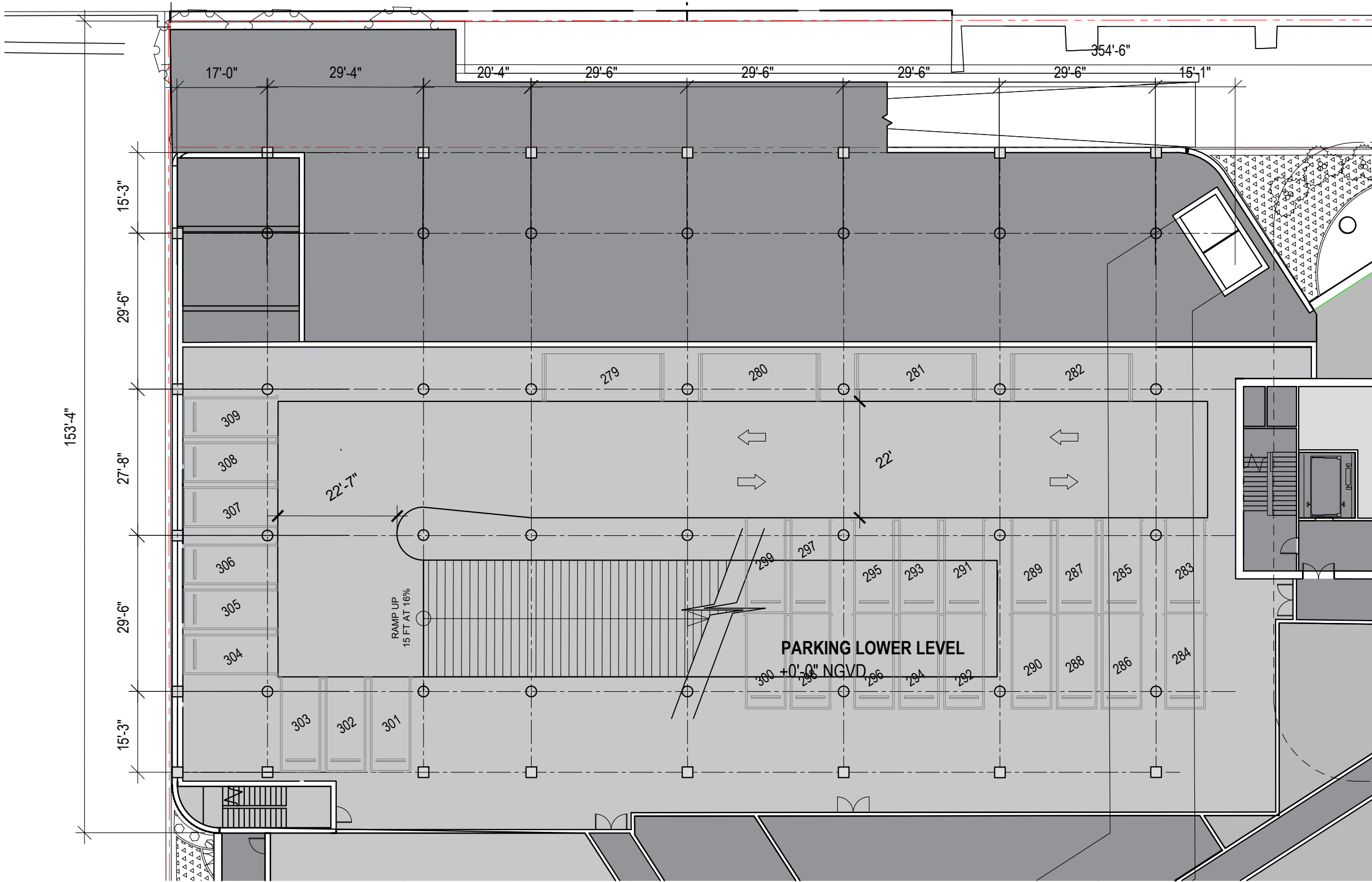
PB FINAL SUBMITTAL
120 MACARTHUR CAUSEWAY
MIAMI BEACH, FL

SELF PARKING OPTION
PROJECT DATA

SCALE:

DATE:
11/29/2021

AX-300



ARQUITECTONICA

2900 Oak Avenue, Miami, FL 33133
T 305.372.1812 F 305.372.1175

ALL DESIGNS INDICATED IN THESE DRAWINGS ARE PROPERTY OF ARQUITECTONICA INTERNATIONAL CORP. NO COPIES, TRANSMISSIONS, REPRODUCTIONS OR ELECTRONIC MANIPULATION OF ANY PORTION OF THESE DRAWINGS IN THE WHOLE OR IN PART ARE TO BE MADE WITHOUT THE EXPRESS OF WRITTEN AUTHORIZATION OF ARQUITECTONICA INTERNATIONAL CORP. DESIGN INTENT SHOWN IS SUBJECT TO REVIEW AND APPROVAL OF ALL APPLICABLE LOCAL AND GOVERNMENTAL AUTHORITIES HAVING JURISDICTION. ALL COPYRIGHTS RESERVED © 2021. THE DATA INCLUDED IN THIS STUDY IS CONCEPTUAL IN NATURE AND WILL CONTINUE TO BE MODIFIED THROUGHOUT THE COURSE OF THE PROJECTS DEVELOPMENT WITH THE EVENTUAL INTEGRATION OF STRUCTURAL, MEP AND LIFE SAFETY SYSTEMS. AS THESE ARE FURTHER REFINED, THE NUMBERS WILL BE ADJUSTED ACCORDINGLY.

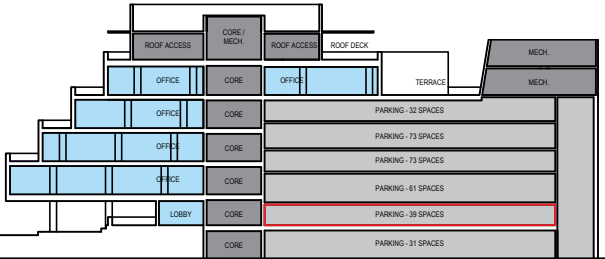
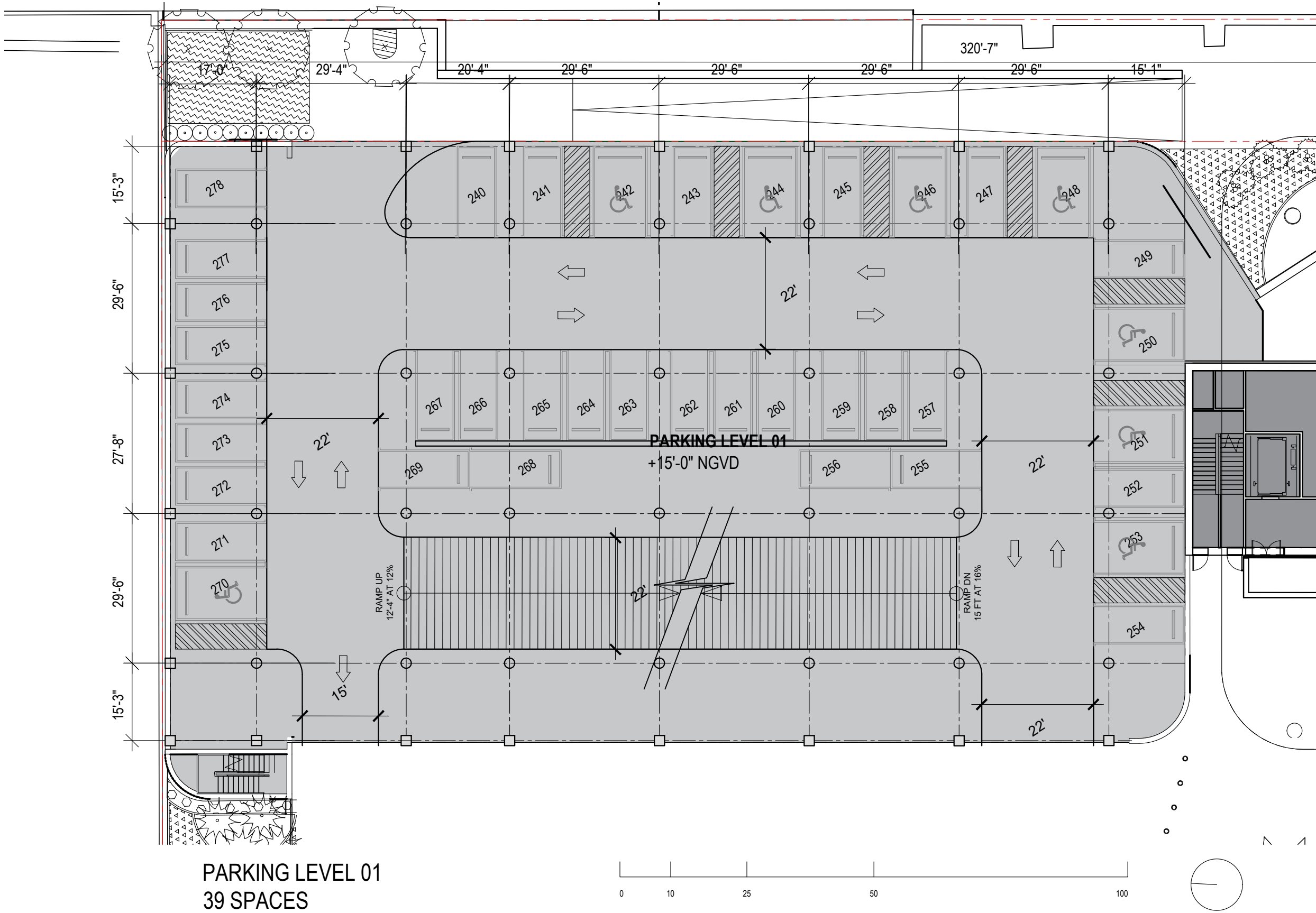
PB FINAL SUBMITTAL
120 MACARTHUR CAUSEWAY
MIAMI BEACH, FL

SELF-PARKING OPTION
LOWER LEVEL

SCALE: 1"=20'-0"

DATE:
11/29/2021

AX-301



ARQUITECTONICA

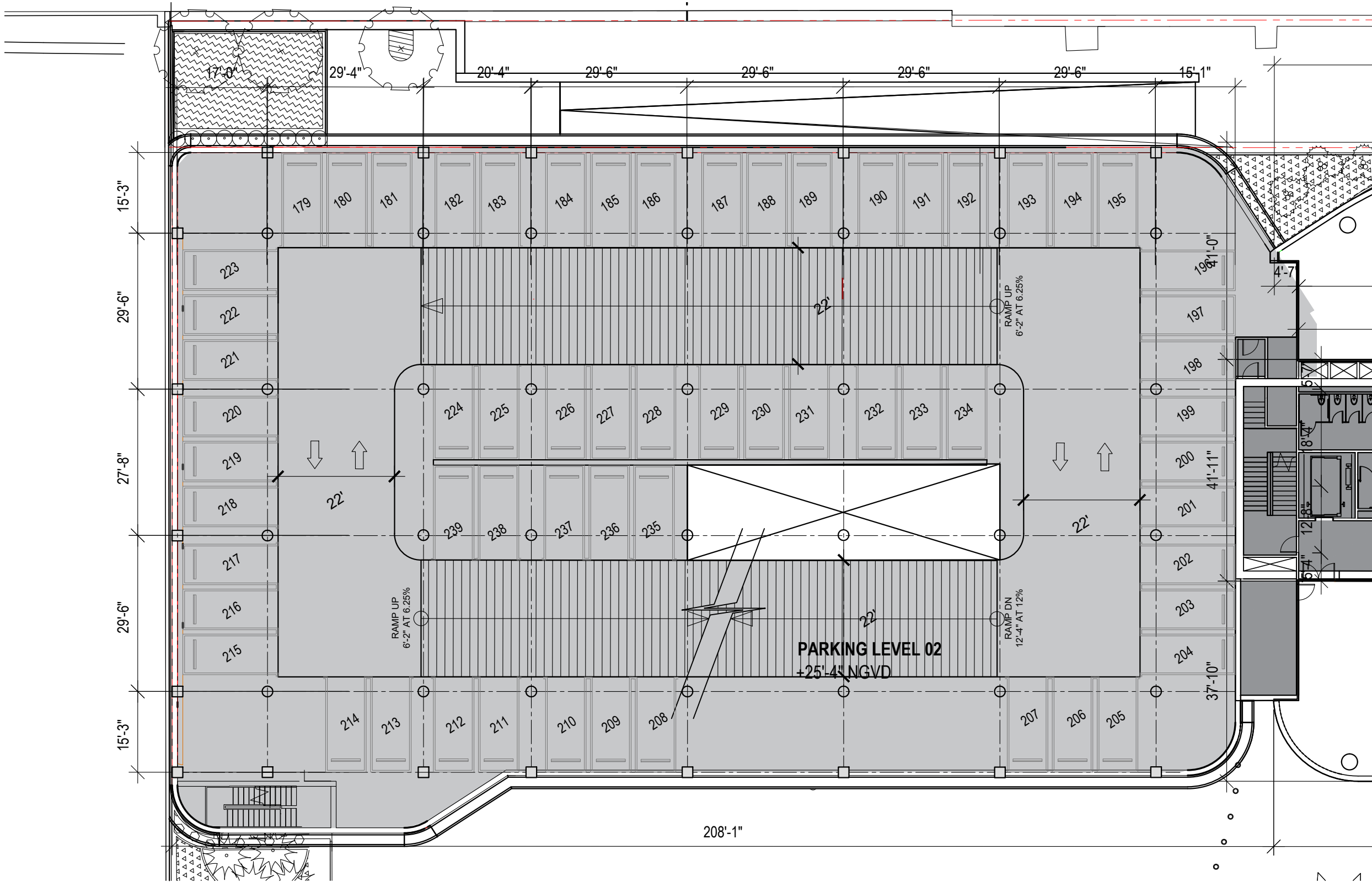
2900 Oak Avenue, Miami, FL 33133
T 305.372.1812 F 305.372.1175
ALL DESIGNS INDICATED IN THESE DRAWINGS ARE PROPERTY OF ARQUITECTONICA INTERNATIONAL CORP. NO COPIES, TRANSMISSIONS, REPRODUCTIONS OR ELECTRONIC MANIPULATION OF ANY PORTION OF THESE DRAWINGS IN THE WHOLE OR IN PART ARE TO BE MADE WITHOUT THE EXPRESS OF WRITTEN AUTHORIZATION OF ARQUITECTONICA INTERNATIONAL CORP. DESIGN INTENT SHOWN IS SUBJECT TO REVIEW AND APPROVAL OF ALL APPLICABLE LOCAL AND GOVERNMENTAL AUTHORITIES HAVING JURISDICTION. ALL COPYRIGHTS RESERVED © 2021. THE DATA INCLUDED IN THIS STUDY IS CONCEPTUAL IN NATURE AND WILL CONTINUE TO BE MODIFIED THROUGHOUT THE COURSE OF THE PROJECTS DEVELOPMENT WITH THE EVENTUAL INTEGRATION OF STRUCTURAL, MEP AND LIFE SAFETY SYSTEMS. AS THESE ARE FURTHER REFINED, THE NUMBERS WILL BE ADJUSTED ACCORDINGLY.

PB FINAL SUBMITTAL
120 MACARTHUR CAUSEWAY
MIAMI BEACH, FL

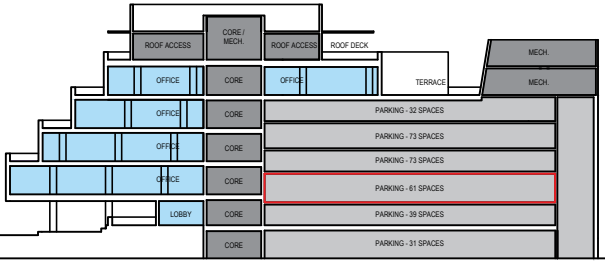
SELF-PARKING OPTION
LEVEL 01
SCALE: 1"=20'-0"

DATE:
11/29/2021

AX-302



PARKING LEVEL 02
61 SPACES



ARQUITECTONICA

2900 Oak Avenue, Miami, FL 33133
T 305.372.1812 F 305.372.1175
ALL DESIGNS INDICATED IN THESE DRAWINGS ARE PROPERTY OF ARQUITECTONICA INTERNATIONAL CORP. NO COPIES, TRANSMISSIONS, REPRODUCTIONS OR ELECTRONIC MANIPULATION OF ANY PORTION OF THESE DRAWINGS IN THE WHOLE OR IN PART ARE TO BE MADE WITHOUT THE EXPRESS OF WRITTEN AUTHORIZATION OF ARQUITECTONICA INTERNATIONAL CORP. DESIGN INTENT SHOWN IS SUBJECT TO REVIEW AND APPROVAL OF ALL APPLICABLE LOCAL AND GOVERNMENTAL AUTHORITIES HAVING JURISDICTION. ALL COPYRIGHTS RESERVED © 2021. THE DATA INCLUDED IN THIS STUDY IS CONCEPTUAL IN NATURE AND WILL CONTINUE TO BE MODIFIED THROUGHOUT THE COURSE OF THE PROJECTS DEVELOPMENT WITH THE EVENTUAL INTEGRATION OF STRUCTURAL, MEP AND LIFE SAFETY SYSTEMS. AS THESE ARE FURTHER REFINED, THE NUMBERS WILL BE ADJUSTED ACCORDINGLY.

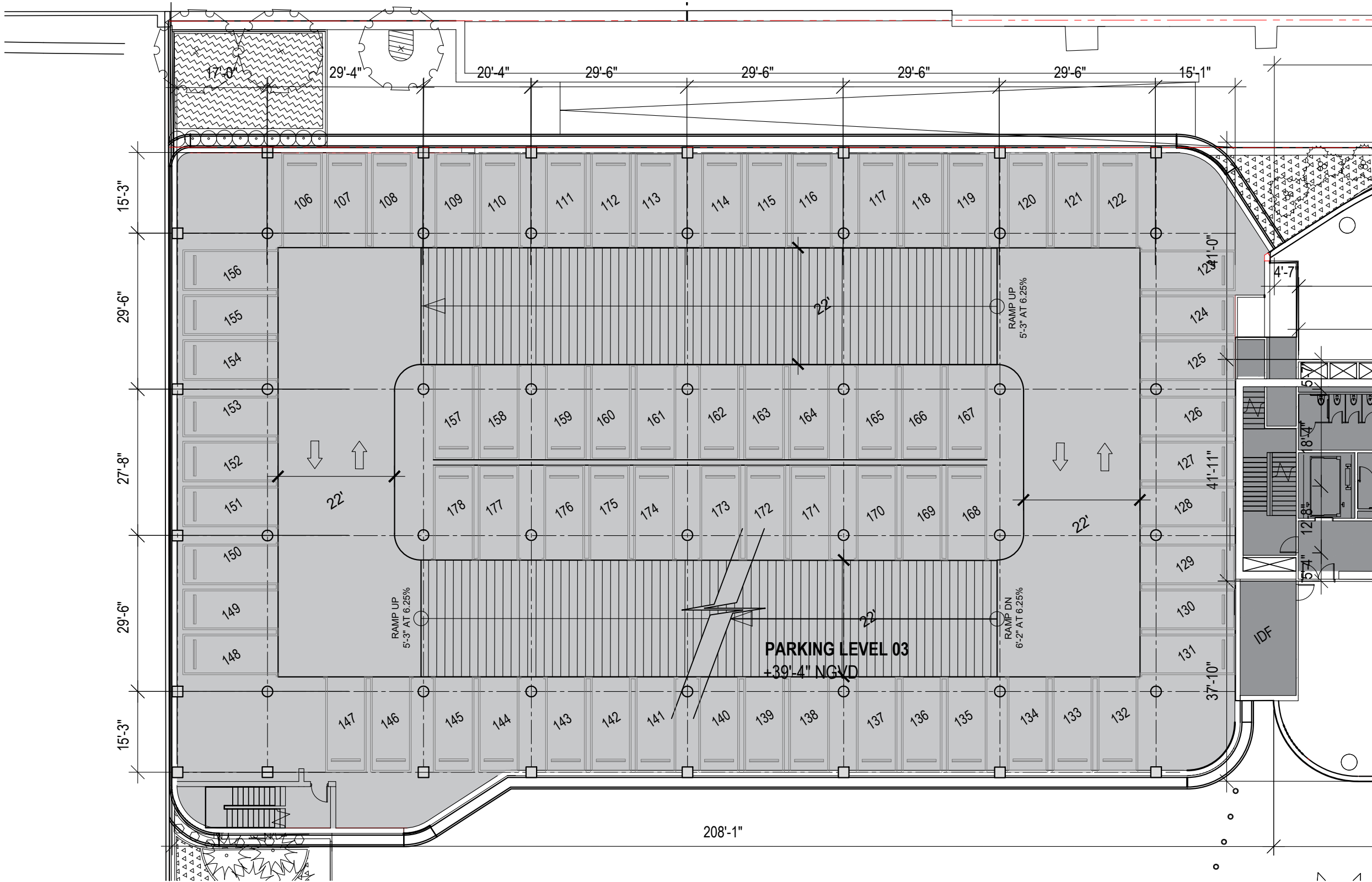
PB FINAL SUBMITTAL
120 MACARTHUR CAUSEWAY
MIAMI BEACH, FL

SELF-PARKING OPTION
LEVEL 02

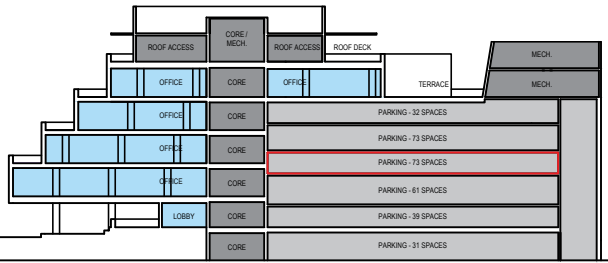
SCALE: 1"=20'-0"

DATE:
11/29/2021

AX-303



PARKING LEVEL 03
73 SPACES



ARQUITECTONICA

2900 Oak Avenue, Miami, FL 33133
T 305.372.1812 F 305.372.1175

ALL DESIGNS INDICATED IN THESE DRAWINGS ARE PROPERTY OF ARQUITECTONICA INTERNATIONAL CORP. NO COPIES, TRANSMISSIONS, REPRODUCTIONS OR ELECTRONIC MANIPULATION OF ANY PORTION OF THESE DRAWINGS IN THE WHOLE OR IN PART ARE TO BE MADE WITHOUT THE EXPRESS OF WRITTEN AUTHORIZATION OF ARQUITECTONICA INTERNATIONAL CORP. DESIGN INTENT SHOWN IS SUBJECT TO REVIEW AND APPROVAL OF ALL APPLICABLE LOCAL AND GOVERNMENTAL AUTHORITIES HAVING JURISDICTION. ALL COPYRIGHTS RESERVED © 2021. THE DATA INCLUDED IN THIS STUDY IS CONCEPTUAL IN NATURE AND WILL CONTINUE TO BE MODIFIED THROUGHOUT THE COURSE OF THE PROJECTS DEVELOPMENT WITH THE EVENTUAL INTEGRATION OF STRUCTURAL, MEP AND LIFE SAFETY SYSTEMS. AS THESE ARE FURTHER REFINED, THE NUMBERS WILL BE ADJUSTED ACCORDINGLY.

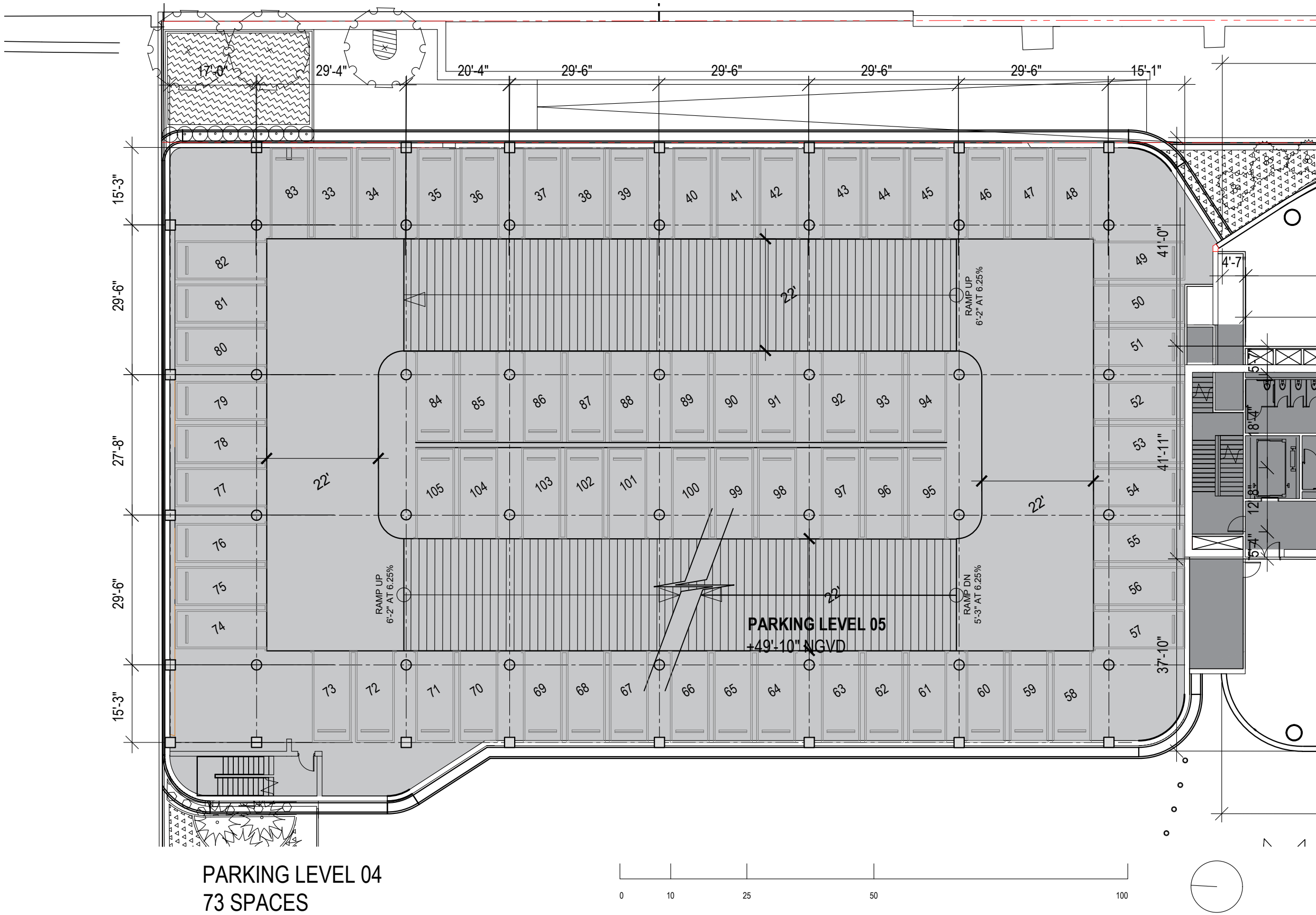
PB FINAL SUBMITTAL
120 MACARTHUR CAUSEWAY
MIAMI BEACH, FL

SELF-PARKING OPTION
LEVEL 03

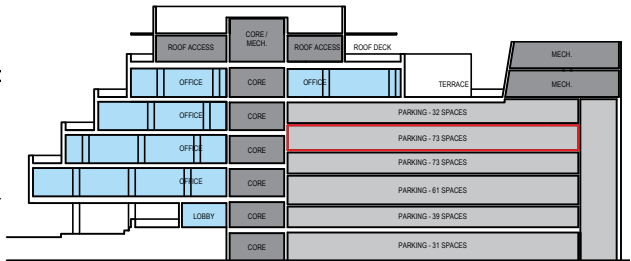
SCALE: 1"=20'-0"

DATE:
11/29/2021

AX-304



PARKING LEVEL 04
73 SPACES



ARQUITECTONICA

2900 Oak Avenue, Miami, FL 33133
T 305.372.1812 F 305.372.1175

ALL DESIGNS INDICATED IN THESE DRAWINGS ARE PROPERTY OF ARQUITECTONICA INTERNATIONAL CORP. NO COPIES, TRANSMISSIONS, REPRODUCTIONS OR ELECTRONIC MANIPULATION OF ANY PORTION OF THESE DRAWINGS IN THE WHOLE OR IN PART ARE TO BE MADE WITHOUT THE EXPRESS WRITTEN AUTHORIZATION OF ARQUITECTONICA INTERNATIONAL CORP. DESIGN INTENT SHOWN IS SUBJECT TO REVIEW AND APPROVAL OF ALL APPLICABLE LOCAL AND GOVERNMENTAL AUTHORITIES HAVING JURISDICTION. ALL COPYRIGHTS RESERVED © 2021. THE DATA INCLUDED IN THIS STUDY IS CONCEPTUAL IN NATURE AND WILL CONTINUE TO BE MODIFIED THROUGHOUT THE COURSE OF THE PROJECTS DEVELOPMENT WITH THE EVENTUAL INTEGRATION OF STRUCTURAL, MEP AND LIFE SAFETY SYSTEMS. AS THESE ARE FURTHER REFINED, THE NUMBERS WILL BE ADJUSTED ACCORDINGLY.

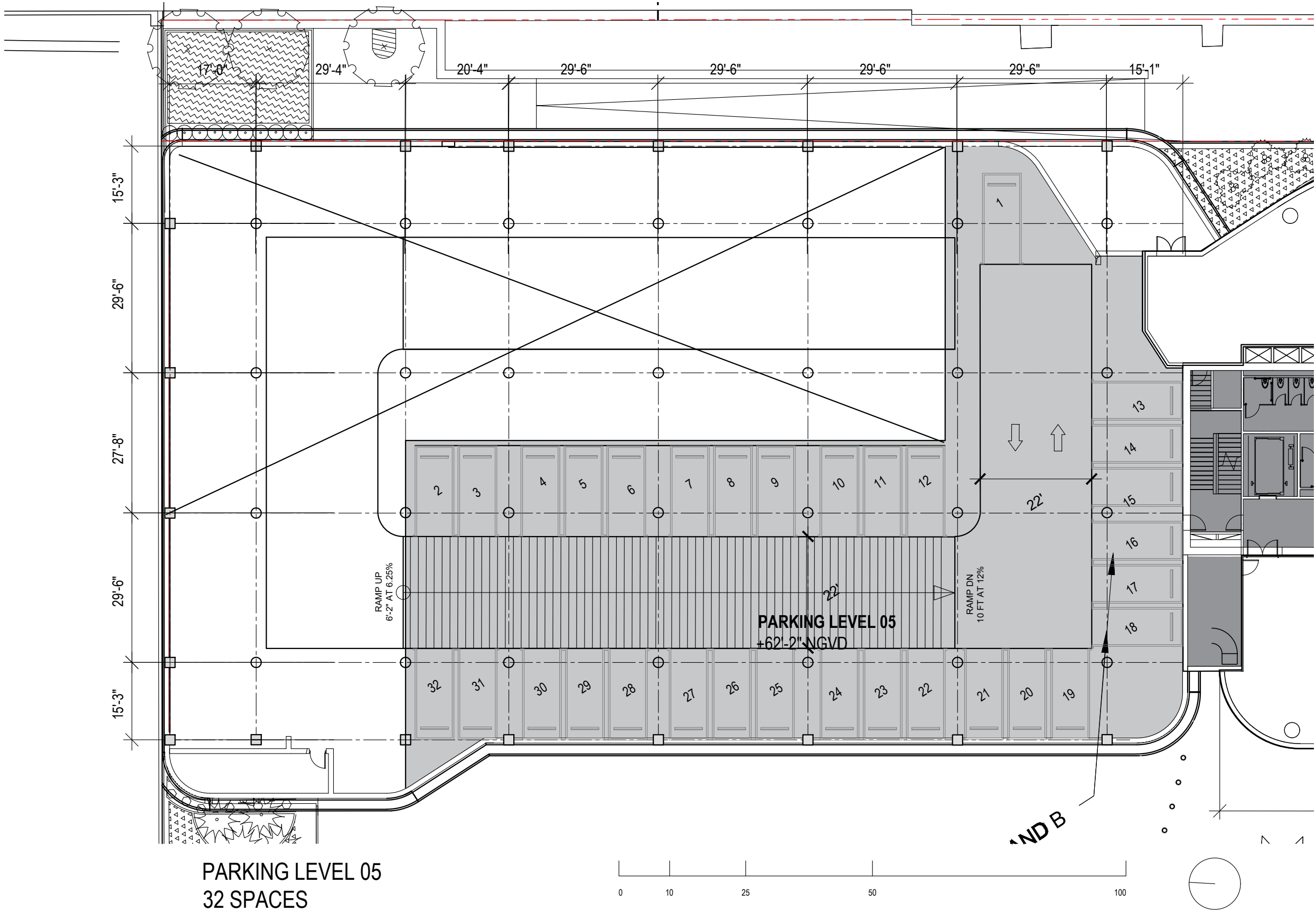
PB FINAL SUBMITTAL
120 MACARTHUR CAUSEWAY
MIAMI BEACH, FL

SELF-PARKING OPTION
LEVEL 04

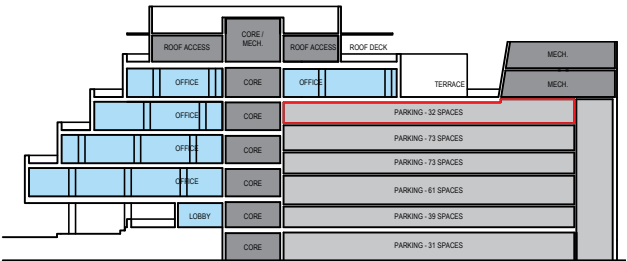
SCALE: 1"=20'-0"

DATE:
11/29/2021

AX-305



PARKING LEVEL 05
32 SPACES



ARQUITECTONICA

2900 Oak Avenue, Miami, FL 33133
T 305.372.1812 F 305.372.1175

ALL DESIGNS INDICATED IN THESE DRAWINGS ARE PROPERTY OF ARQUITECTONICA INTERNATIONAL CORP. NO COPIES, TRANSMISSIONS, REPRODUCTIONS OR ELECTRONIC MANIPULATION OF ANY PORTION OF THESE DRAWINGS IN THE WHOLE OR IN PART ARE TO BE MADE WITHOUT THE EXPRESS WRITTEN AUTHORIZATION OF ARQUITECTONICA INTERNATIONAL CORP. DESIGN INTENT SHOWN IS SUBJECT TO REVIEW AND APPROVAL OF ALL APPLICABLE LOCAL AND GOVERNMENTAL AUTHORITIES HAVING JURISDICTION. ALL COPYRIGHTS RESERVED © 2021. THE DATA INCLUDED IN THIS STUDY IS CONCEPTUAL IN NATURE AND WILL CONTINUE TO BE MODIFIED THROUGHOUT THE COURSE OF THE PROJECTS DEVELOPMENT WITH THE EVENTUAL INTEGRATION OF STRUCTURAL, MEP AND LIFE SAFETY SYSTEMS. AS THESE ARE FURTHER REFINED, THE NUMBERS WILL BE ADJUSTED ACCORDINGLY.

PB FINAL SUBMITTAL
120 MACARTHUR CAUSEWAY
MIAMI BEACH, FL

SELF-PARKING OPTION
LEVEL 05

SCALE: 1"=20'-0"

DATE:
11/29/2021

AX-306