

**DRAWINGS PREPARED FOR:
TAW POWER SYSTEMS**

**1000 GALLON UL#142 SEALED SECONDARY TANK
w/ SOUND ATT. LEVEL IV+ ENCLOSURE
(55dB @ 23' IN A FREE FIELD ENVIRONMENT)
WO# 45584**



1900 NE 25TH AVE, OCALA, FL 34470
PHONE (352) 414-4700 FAX (352) 414-4642

SPECIAL INSTRUCTIONS:

1	ENCLOSURE WIND-LOAD RATED AT 186 MPH
2	INSTALL CUSTOMER SUPPLIED BATTERY CHARGER
3	2" AIR GAP UNDERNEATH FUEL TANK FOR VISUAL INSPECTION
4	COVER AND INSULATE FUEL TANK STUB UP AREA
5	REMOTE ANNUNCIATOR -- 3 RED LIGHT (24 VDC) UL LISTED NEMA4 ENCLOSURE STANDARD WITH AUDIBLE ALARM HORN AND SILENCE/RESET BUTTON. TYPICAL ARRANGEMENT FOR HIGH FUEL LEVEL, LOW FUEL LEVEL, AND RUPTURE BASIN ALARM POINTS
6	FDEP PACKAGE -- 7-1/2 GALLON FILL/SPILL BUCKET WITH HIGH FUEL SWITCH SET @ 90%
7	INSTALLATION OF PLUGS REQUIRED AND ONE VACUUM GAUGE TO PULL INTERSTITIAL AREA TO MAX VACUUM. DOCUMENTATION OF VACUUM READINGS PRIOR TO SHIPMENT. PACKAGE SECONDARY VENT AND SECONDARY TANK ACCESSORIES TO SHIP LOOSE WITH TANK. TANK TO REMAIN UNDER VACUUM UNTIL REACHING JOBSITE. END USER RESPONSIBLE FOR INSTALLATION OF ACCESSORIES
8	NORMAL VENT EXTENDED TO 12 FEET ABOVE GRADE
9	UPGRADED PAINT FOR FUEL TANK (PPG-MARINE GRADE 3 COAT SYSTEM): SSPC-SP10 / NACE NO. 2 - NEAR-WHITE BLAST CLEANING. PRIMER COAT - APPLY ONE COAT OF ZNP-101 1K ORGANIC ZINC RICH PRIMER. DRY FILM THICKNESS 1.0 TO 2.0 MILS AVERAGE. INTERMEDIATE COAT - APPLY ONE COAT OF SPECTRACON 573 HIGH BUILD ANTI-CORROSIVE EPOXY PRIMER. DRY FILM THICKNESS 5.0 TO 8.0 MILS AVERAGE. TOP COAT - APPLY ONE COAT OF SPECTRACON 390-UV 2K HS EXTERIOR ACRYLIC URETHANE. DRY FILM THICKNESS 2.0 TO 3.0 MILS AVERAGE.
10	NEOPRENE KORFUND PADS (CP4X4) BETWEEN GENSET AND FUEL TANK
11	MOUNT GENSET AND INSTALL FUEL LINES
12	THREE YEAR WARRANTY

TANK NOTES:

1. ALL FITTINGS TO BE CARBON STEEL WELD FLANGES (UNLESS OTHERWISE NOTED)
2. EXTERIOR FINISH: "BLACK" SPECTRACRON® 390 SERIES 2K POLYURETHANE ENAMEL
3. INNER TANK DIMENSIONS: 197.50" L x 89.875" W x 16.742" H
4. APPROXIMATE TANK VOLUME: 1000 GALLONS
5. APPROXIMATE TANK WEIGHT: 5250 LBS

NOTES:

1. GENERATOR, KOHLER 250 REOZJE
DIMENSIONS: 118.1" L x 51.2" W x 69" H
WEIGHT: 5400 LBS
DRAWING # : ADV-7900
2. TOTAL AIRFLOW REQUIRED: 13770 CFM
3. SOUND ATTENUATION LEVEL: 55dB @ 23'
4. INSULATION: THREE 2" LAYERS MINERAL WOOL BACKED W/ 16 OZ. LAYER OF MASS-LOADED VINYL
5. LINING: MILL-FINISH PERFORATED ALUMINUM
6. ENCLOSURE WALLS: 6" ALUMINUM TUBE WELDED FRAME
7. ENCLOSURE ROOF: 2" ALUMINUM TUBE WELDED FRAME
8. ENCLOSURE DIMENSIONS: 236" L x 96" W x 112" H
9. ENCLOSURE WEIGHT (APPROX.): 7600 LBS
10. ENCLOSURE COLOR: ECLIPSE SW 6166 212-C6
11. ENCLOSURE SHALL BE PROVIDED w / 4-POINT LIFTING LUGS
12. TOTAL PACKAGE WEIGHT: 18250 LBS

Sheet List Table

Sheet Number	Sheet Title
1	COVER SHEET
2	ASSEMBLY
3	SOUND ATTENUATED LVL 4+ ENCLOSURE
4	UL142 FUEL TANK
5	ENCLOSURE PLAN
6	SUGGESTED PAD LAYOUT

REVISIONS:

REVISION LEVEL	REVISION DESCRIPTION	SHEET OF CHANGE(S)	ENGINEER	DATE
00	INITIAL RELEASE (ORIGINAL QUOTE)		BK	5/24/2019
01				
02				
03				
04				

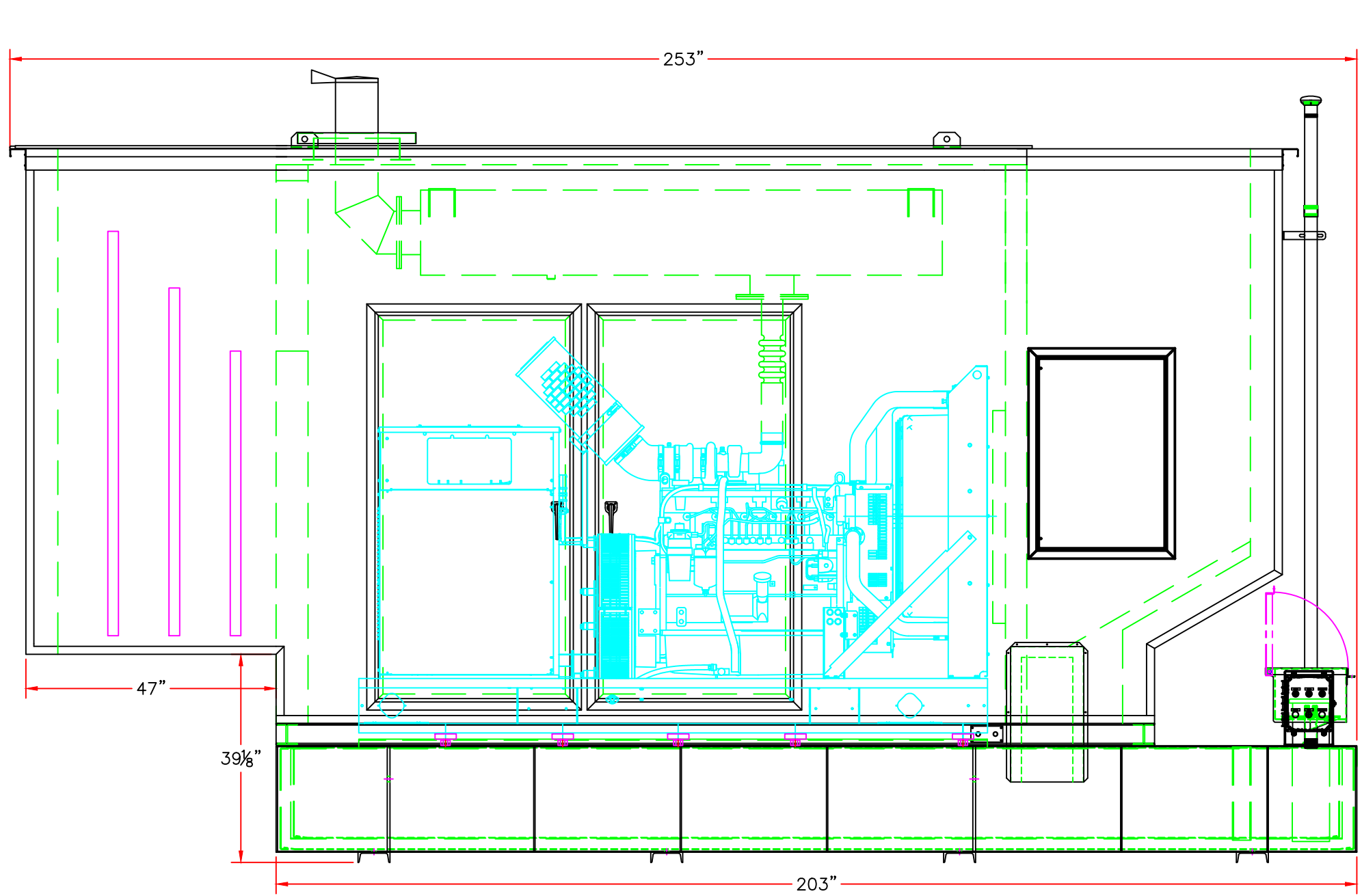
PLEASE NOTE THAT THE FOLLOWING ITEMS WILL SHIP LOOSE AND REQUIRE ON-SITE ASSEMBLY BY OTHERS

1	EXHAUST ELBOW AND RAIN CAP
2	NORMAL VENT PIPING
3	SECONDARY VENT AND SECONDARY TANK ACCESSORIES

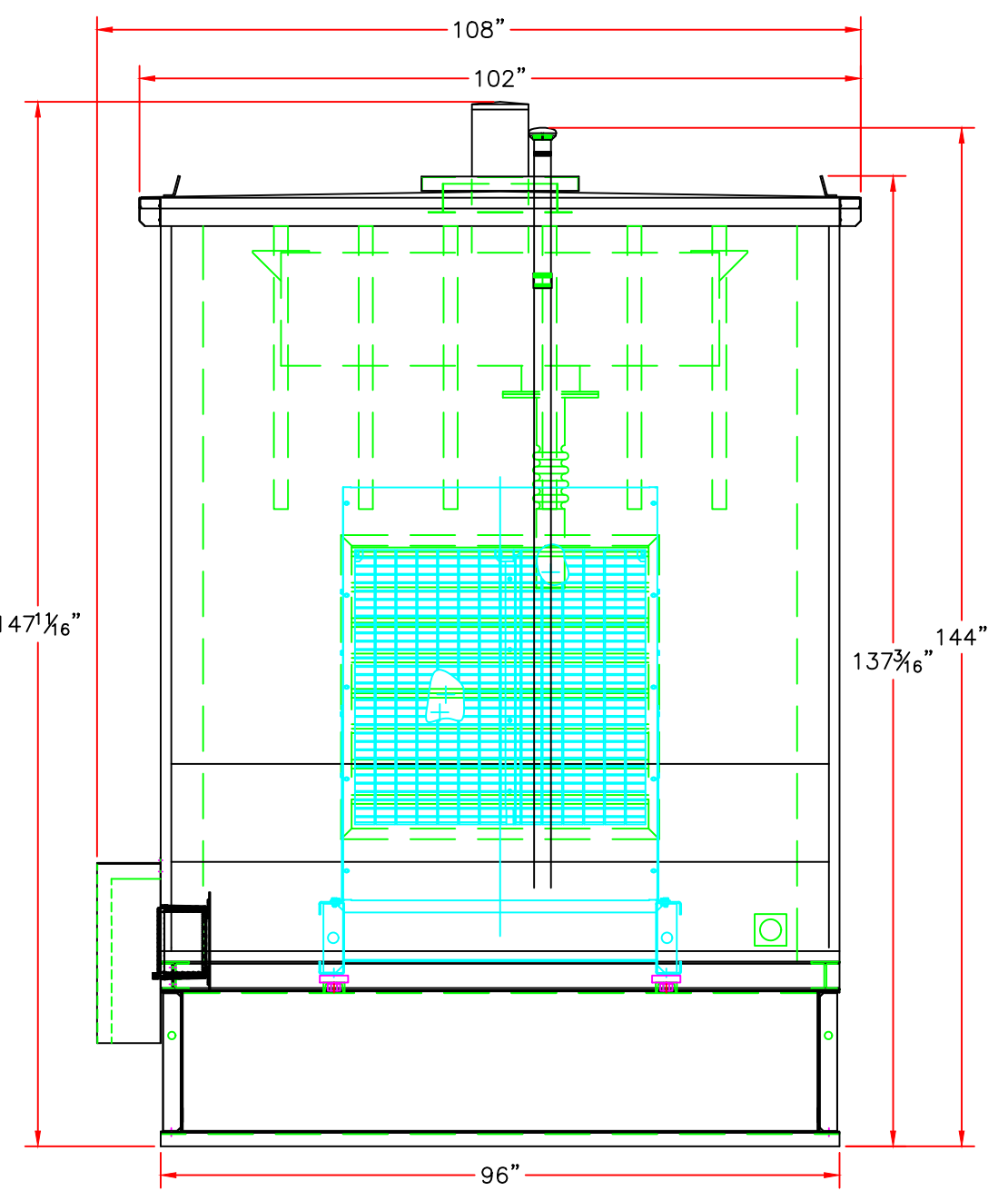
DRAWING ACCEPTED FOR PRODUCTION

SIGNATURE

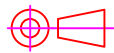
PRINT NAME-TITLE DATE / /



RIGHT SIDE VIEW

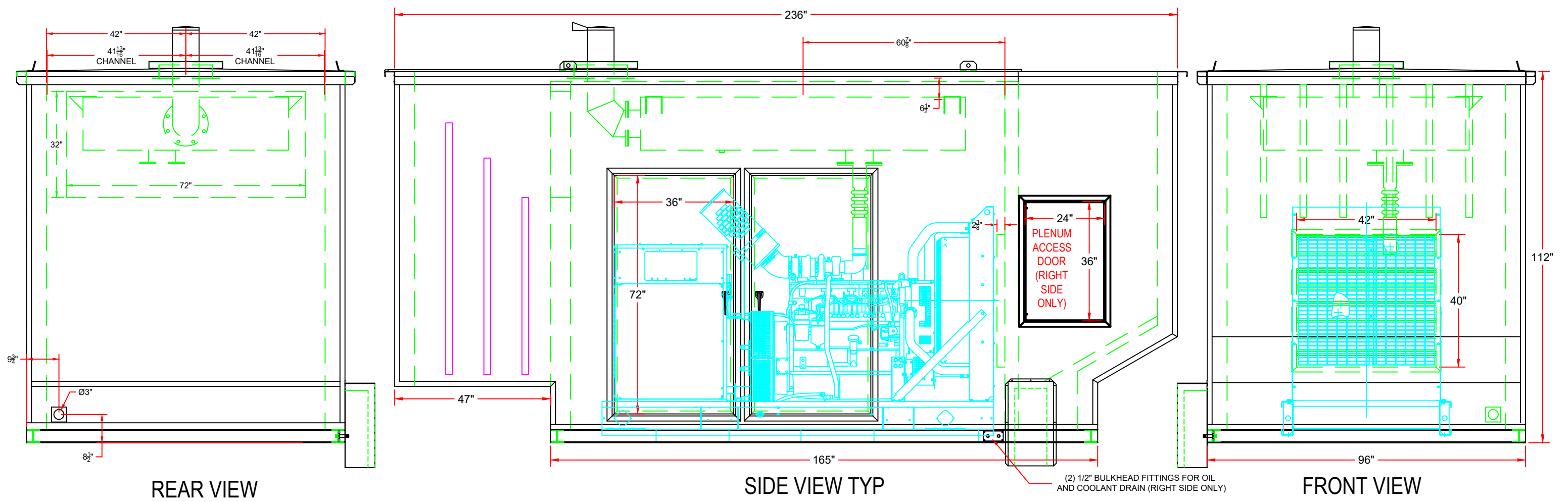


FRONT VIEW

ENCL. WEIGHT	TANK WEIGHT	GEN. WEIGHT	TOTAL WEIGHT	UL #148 File No. MB27680
7,600 LBS.	5,250 LBS.	5,400 LBS.	18,250 LBS.	
CUSTOMER: TAW POWER SYSTEMS				 THIRD-ANGLE PROJECTION
DESCRIPTION ASSEMBLY KOHLER 250 REOZJE				
<small>FIDELITY MANUFACTURING, LLC. CLAIMS PROPRIETARY RIGHT IN THE MATERIAL DISCLOSED HEREON. THIS DRAWING IS ISSUED FOR SALES INFORMATION ONLY AND MAY NOT BE REPRODUCED OR USED TO MANUFACTURE ANYTHING SHOWN HEREON WITHOUT PERMISSION FROM FIDELITY MANUFACTURING, LLC. TO THE USER. FIDELITY MANUFACTURING, LLC. IS NOT RESPONSIBLE FOR ERRORS DUE TO INSUFFICIENT TECHNICAL SPECS, GENSET DRAWINGS, OR OTHER PROVIDED INFORMATION.</small>				REVISION
USEABLE GALLONS / dB LEVEL 1000 / 55dB @ 23'				
DRW. BK CHK. APP. DATE 5/24/2019		SCALE:		SHEET 2 OF 6
WO# 45584				www.fidelitymfg.com


Fidelity
 MANUFACTURING
 1900 NE 25TH AVE, OCALA, FL 34470
 PHONE (352) 414-4700 FAX (352) 414-4642

created using AutoCAD



REAR VIEW

SIDE VIEW TYP

FRONT VIEW

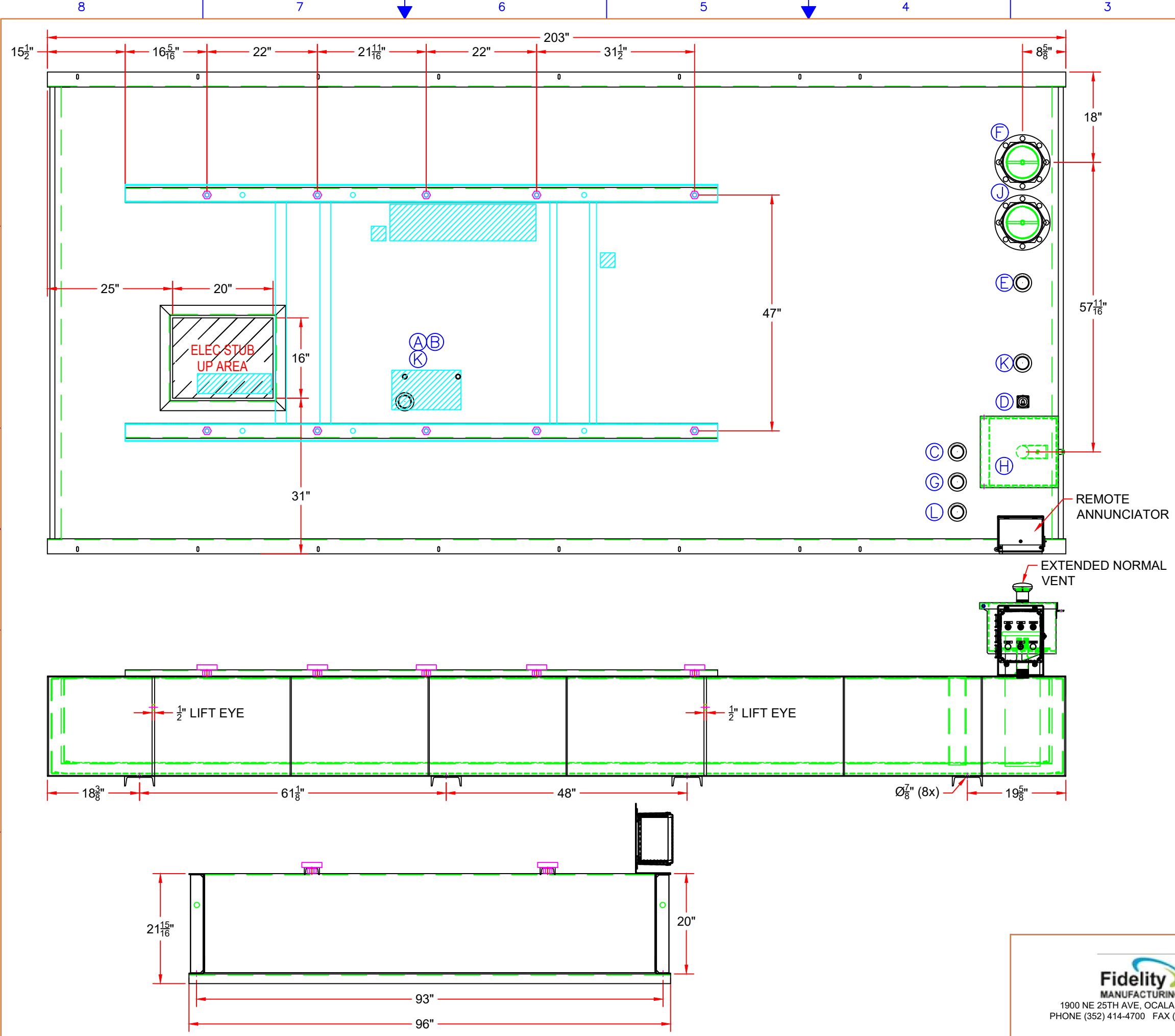
EXHAUST LIST		
QTY.	PART	PART #
1	8" RAINCAP	708-003 / SM-RC-8-T
1	90° 8" ELBOW FLANGE O.E. A=8", B=29"	P/N 707-044 / EB-FOE-8
1	INSULATION BLANKET FOR ABOVE ELBOW A=8", B=14"	SMS
1	8" HOSPITAL EXTREME GRADE SILENCER	702-044-32-23.845-31 / SMR4X-G-8
1	INSULATION BLANKET FOR ABOVE SILENCER	SMS
2	8" ANSI FLANGE INSULATION DONUT	SMS
2	8" ANSI NUT, BOLT, GASKET KIT	FIDELITY
1	4" FLEX, ENGINE FLARED FLANGE O.E., 8" ANSI FLANGE OE, 27.5" OAL	SMS
1	DONALDSON CLAMP FOR ENGINE FLANGE	SMS

DAMPER LIST		
QTY.	DIMENSIONS	PART #
1	42"W X 40"H	CB-601

ENCL. WEIGHT	TANK WEIGHT	GEN. WEIGHT	TOTAL WEIGHT
7,600 LBS.	5,250 LBS.	5,400 LBS.	18,250 LBS.
CUSTOMER: TAW POWER SYSTEMS			
DESCRIPTION: KOHLER 250 REOZIE			
DESCRIPTION: SOUND ATTENUATED LVL 4+ ENCLOSURE			
FIDELITY MANUFACTURING, LLC. CLAIMS PROPRIETARY RIGHT IN THE MATERIAL DISCLOSED HEREON. THIS DRAWING IS ISSUED FOR SALES INFORMATION ONLY AND MAY NOT BE REPRODUCED OR USED TO MANUFACTURE ANYTHING SHOWN HEREON WITHOUT PERMISSION FROM FIDELITY MANUFACTURING, LLC. TO THE USER. FIDELITY MANUFACTURING, LLC. IS NOT RESPONSIBLE FOR ERRORS DUE TO INSUFFICIENT TECHNICAL SPECS, GENSET DRAWINGS, OR OTHER PROVIDED INFORMATION.			REVISION
dB LEVEL			
55dB @ 23'			
DRW. BK		WO # 45584	
CHK.			
APP.			
DATE: 5/24/2019	SCALE:	SHEET 3 OF 6	


Fidelity
 MANUFACTURING
 1900 NE 25TH AVE, OCALA, FL 34470
 PHONE (352) 414-4700 FAX (352) 414-4642

created using AutoCAD



FITTING	DESCRIPTION	LENGTH
A	1/2" NPT FUEL SUPPLY DROP TUBE	18"
B	1/2" NPT FUEL RETURN DROP TUBE	18"
C	2" NPT LOW FUEL SWITCH SET @ 25%	12-3/8"
D	1-1/2" NPT FUEL GAUGE	15-1/2"
E	2" NPT NORMAL VENT	
F	6" ANSI FLANGE EMERGENCY VENT (PRIMARY)	
G	2" NPT TOP-MOUNT BASIN SWITCH & DRAIN PORT	
H	2" NPT 7-1/2 GALLON FILL/SPILL BUCKET	
J	6" ANSI FLANGE EMERGENCY VENT (SECONDARY)	
K	2" NPT SPARE FITTINGS (QTY 2)	
L	2" NPT HIGH FUEL SWITCH SET @ 90%	1-5/8"

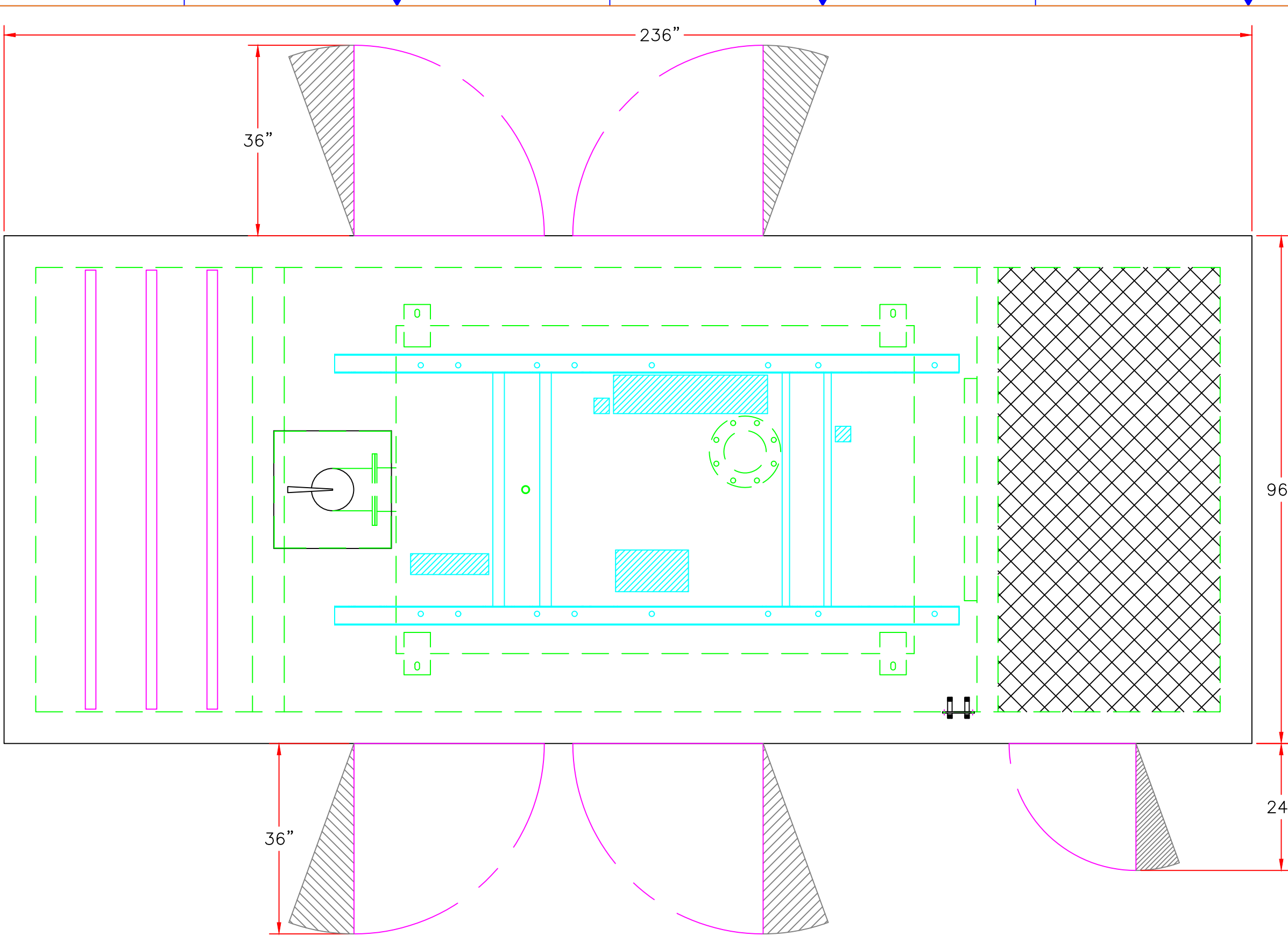
FDEP INFORMATION	
1	TANK EQ# 497
2	FILL/SPILL CONTAINMENT EQ# 778
3	HIGH FUEL SWITCH AND LEAK DETECTION SWITCH EQ# 817
4	OVERFILL PREVENTION VALVE EQ# 851
5	FUEL GAUGE EQ# 901

NOTE:
ALL SENSORS ARE
TOP-MOUNTED



ENCL. WEIGHT	TANK WEIGHT	GEN. WEIGHT	TOTAL WEIGHT	UL #142 File No. MB27650
7,600 LBS.	5,250 LBS.	5,400 LBS.	18,250 LBS.	
CUSTOMER: TAW POWER SYSTEMS				THIRD-ANGLE PROJECTION
DESCRIPTION: KOHLER 250 REOZIE				
DESCRIPTION: UL142 FUEL TANK				REVISION
FIDELITY MANUFACTURING, LLC. CLAIMS PROPRIETARY RIGHT IN THE MATERIAL DISCLOSED HEREON. THIS DRAWING IS ISSUED FOR SALES INFORMATION ONLY AND MAY NOT BE REPRODUCED OR USED TO MANUFACTURE ANYTHING SHOWN HEREON WITHOUT PERMISSION FROM FIDELITY MANUFACTURING, LLC. TO THE USER. FIDELITY MANUFACTURING, LLC. IS NOT RESPONSIBLE FOR ERRORS DUE TO INSUFFICIENT TECHNICAL SPECS, GENSET DRAWINGS, OR OTHER PROVIDED INFORMATION.				
USEABLE GALLONS				
1000				
DRW. BK	WO# 45584			
CHK.				
APP.				
DATE: 5/24/2019	SCALE:	SHEET 4 OF 6		

Fidelity
MANUFACTURING
1900 NE 25TH AVE, OCALA, FL 34470
PHONE (352) 414-4700 FAX (352) 414-4642

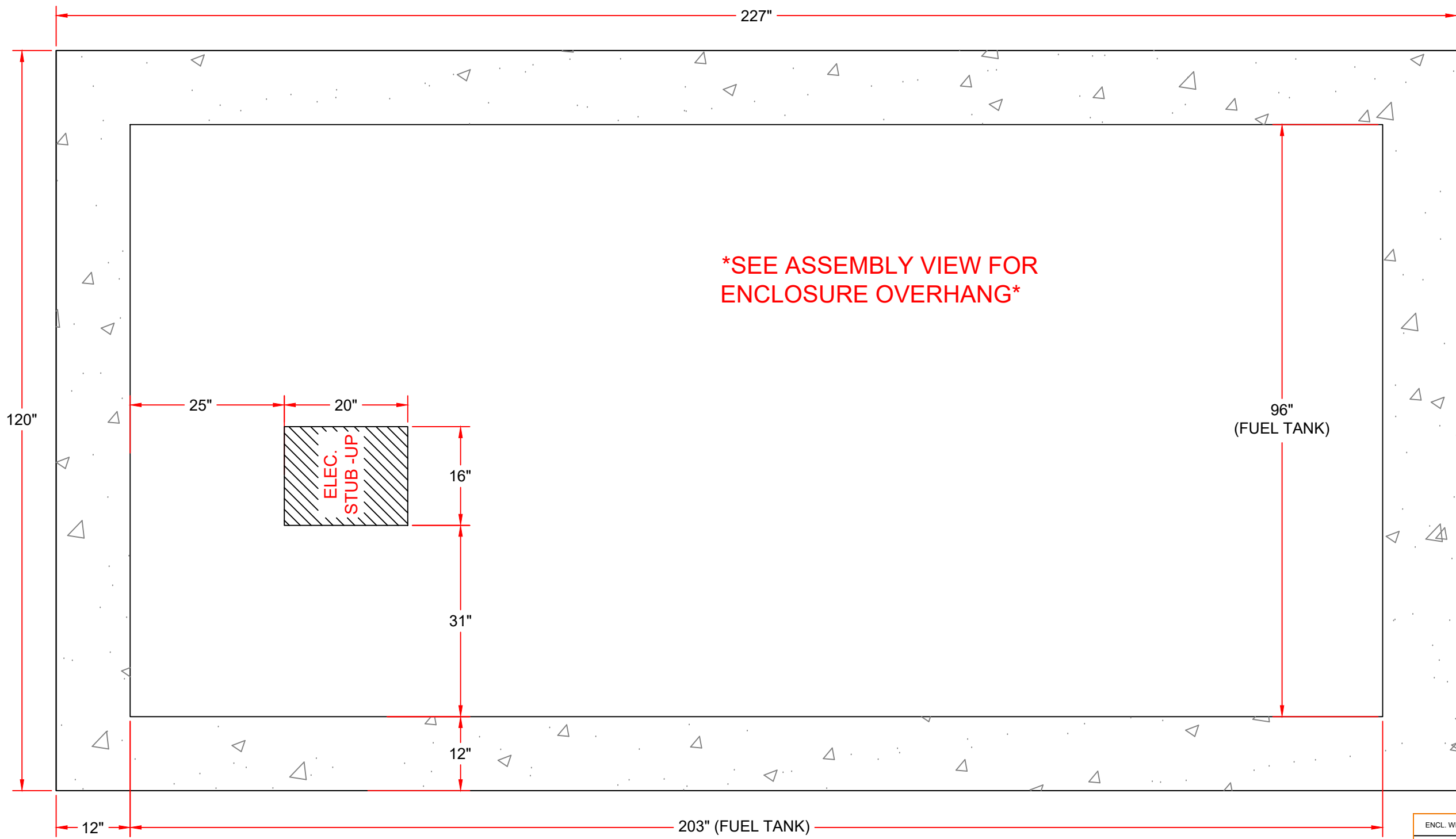
created using AutoCAD



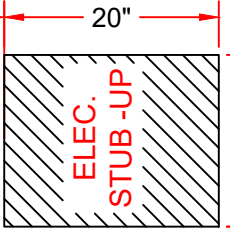
PLAN VIEW

ENCL. WEIGHT	TANK WEIGHT	GEN. WEIGHT	TOTAL WEIGHT	
7,600 LBS.	5,250 LBS.	5,400 LBS.	18,250 LBS.	
CUSTOMER: TAW POWER SYSTEMS				 THIRD-ANGLE PROJECTION
DESCRIPTION: KOHLER 250 REOZJE				
<small>FIDELITY MANUFACTURING, LLC. CLAIMS PROPRIETARY RIGHT IN THE MATERIAL DISCLOSED HEREON. THIS DRAWING IS ISSUED FOR SALES INFORMATION ONLY AND MAY NOT BE REPRODUCED OR USED TO MANUFACTURE ANYTHING SHOWN HEREON WITHOUT PERMISSION FROM FIDELITY MANUFACTURING, LLC. TO THE USER. FIDELITY MANUFACTURING, LLC. IS NOT RESPONSIBLE FOR ERRORS DUE TO INSUFFICIENT TECHNICAL SPECS, GENSET DRAWINGS, OR OTHER PROVIDED INFORMATION.</small>				REVISION
 Fidelity MANUFACTURING 1900 NE 25TH AVE, OCALA, FL 34470 PHONE (352) 414-4700 FAX (352) 414-4642				DATE 5/24/2019 SCALE:
DRW. BK CHK. APP. DATE 5/24/2019				WO# 45584 SHEET 5 OF 6 <small>www.fidelitymfg.com</small>

created using AutoCAD



SEE ASSEMBLY VIEW FOR ENCLOSURE OVERHANG



SUGGESTED PAD LAYOUT DRAWING IS FOR STUB-UP LOCATION REFERENCE ONLY. TO OBTAIN FULL FUEL CAPACITY PAD SHOULD BE SLOPED NO MORE THAN 1/4". ACTUAL PAD DESIGN IS TO BE ACCORDING TO PLANS, SPECS, & APPLICABLE JURISDICTIONAL AUTHORITIES.

ENCL. WEIGHT	TANK WEIGHT	GEN. WEIGHT	TOTAL WEIGHT
7,600 LBS.	5,250 LBS.	5,400 LBS.	18,250 LBS.
CUSTOMER: TAW POWER SYSTEMS			
DESCRIPTION: KOHLER 250 REOZJE			
SUGGESTED PAD LAYOUT			
<small>FIDELITY MANUFACTURING, LLC. CLAIMS PROPRIETARY RIGHT IN THE MATERIAL DISCLOSED HEREON. THIS DRAWING IS ISSUED FOR SALES INFORMATION ONLY AND MAY NOT BE REPRODUCED OR USED TO MANUFACTURE ANYTHING SHOWN HEREON WITHOUT PERMISSION FROM FIDELITY MANUFACTURING, LLC. TO THE USER. FIDELITY MANUFACTURING, LLC. IS NOT RESPONSIBLE FOR ERRORS DUE TO INSUFFICIENT TECHNICAL SPECS, GENSET DRAWINGS, OR OTHER PROVIDED INFORMATION.</small>			<small>REVISION</small>
		WO# 45584	
<small>1900 NE 25TH AVE, OCALA, FL 34470 PHONE (352) 414-4700 FAX (352) 414-4642</small>	<small>DRW. BK</small> <small>CHK.</small> <small>APP.</small> <small>DATE 5/24/2019</small>	<small>SCALE:</small>	<small>SHEET 6 OF 6</small>

Fidelity MANUFACTURING
 1900 NE 25TH AVE, OCALA, FL 34470
 PHONE (352) 414-4700 FAX (352) 414-4642

created using AutoCAD