

MIAMIBEACH

PUBLIC WORKS DEPARTMENT

LANDSCAPE PLANTING PLANS

2016-091-KB

DESIGN/BUILD SERVICES FOR WEST AVENUE IMPROVEMENTS PHASE II NORTH OF 14 STREET

90% DESIGN RE-SUBMITTAL

CITY OF MIAMI BEACH

MAYOR: DAN GELBER

COMMISSIONERS: MICKY STEINBERG
MARK SAMUELIAN
MICHAEL GONGORA
KRISTEN ROSEN GONZALEZ
RICKY ARRIOLA
JOHN ELIZABETH ALEMÁN

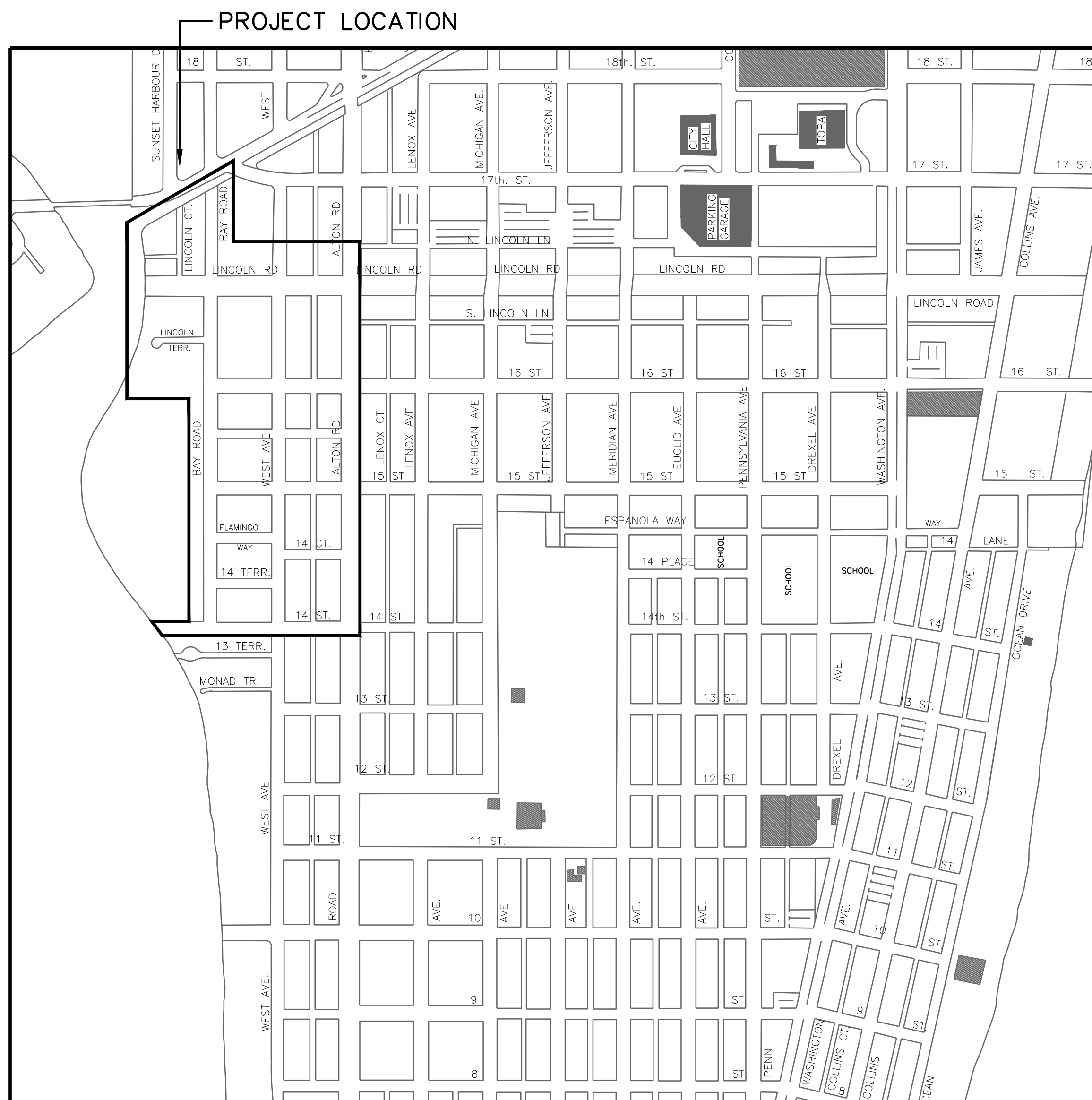
CITY MANAGER: JIMMY L. MORALES

CITY ATTORNEY: RAUL J. AGUILA

PUBLIC WORKS DIRECTOR: ERIC T. CARPENTER, P.E.

CITY ENGINEER: BRUCE A. MOWRY, Ph.D., P.E.

DIRECTOR OF CAPITAL IMPROVEMENT: DAVID MARTINEZ, P.E., LEED AP



LOCATION MAP

WEST AVE. - PERMIT SET INDEX- NORTH	
LANDSCAPE GENERAL NOTES	
LG-N	LANDSCAPE GENERAL NOTES
TREE MITIGATION PLAN & SCHEDULE	
LT-1N	TREE MITIGATION PLAN - WEST AVE.
LT-2N	TREE MITIGATION PLAN - WEST AVE.
LT-3N	TREE MITIGATION PLAN - BAY ROAD
LT-4N	TREE MITIGATION PLAN - BAY ROAD
LT-5N	TREE MITIGATION PLAN - LINCOLN COURT & LINCOLN TERRACE
LT-7N	TREE MITIGATION PLAN - 14TH TERRACE & 16TH STREET END
LT-8N	TREE MITIGATION PLAN - FLAMINGO WAY & 14TH COURT
LT-9N	TREE MITIGATION PLAN - 15TH ST.
LT-10N	TREE MITIGATION PLAN - 15TH TERRACE
LT-11N	TREE MITIGATION PLAN - 16TH ST.
LT-12N	TREE MITIGATION PLAN - LINCOLN ROAD
LT-1	TREE MITIGATION SCHEDULE
LT-2	TREE MITIGATION SCHEDULE
LT-3	TREE MITIGATION SCHEDULE
LT-4	TREE MITIGATION SCHEDULES & TREE PROTECTION DETAIL
PLANTING PLAN & SCHEDULE	
LA-1N	PLANTING PLAN - WEST AVE
LA-2N	PLANTING PLAN - WEST AVE
LA-3N	PLANTING PLAN - BAY ROAD
LA-4N	PLANTING PLAN - BAY ROAD
LA-5N	PLANTING PLAN - LINCOLN COURT & LINCOLN TERRACE
LA-7N	PLANTING PLAN - 14TH TERRACE & 16TH STREET END
LA-8N	PLANTING PLAN - FLAMINGO WAY & 14TH COURT
LA-9N	PLANTING PLAN - 15TH ST.
LA-10N	PLANTING PLAN - 15TH TERRACE
LA-11N	PLANTING PLAN - 16TH ST.
LA-12N	PLANTING PLAN - LINCOLN ROAD
LA-N	PLANTING SCHEDULE
LANDSCAPE TYPICAL DETAIL	
LD-1	TYPICAL PLANTING DETAILS
LD-2	TYPICAL PLANTING DETAILS
IRRIGATION PLAN & SCHEDULE	
LI-N	ZONING MAP
LI-1N	IRRIGATION PLAN - WEST AVE
LI-2N	IRRIGATION PLAN - WEST AVE
LI-3N	IRRIGATION PLAN - BAY ROAD
LI-4N	IRRIGATION PLAN - BAY ROAD
LI-5N	IRRIGATION PLAN - LINCOLN COURT & LINCOLN TERRACE
LI-7N	IRRIGATION PLAN - 14TH TERRACE & 16TH STREET END
LI-8N	IRRIGATION PLAN - FLAMINGO WAY & 14TH COURT
LI-9N	IRRIGATION PLAN - 15TH ST.
LI-10N	IRRIGATION PLAN - 15TH TERRACE
LI-11N	IRRIGATION PLAN - 16TH ST.
LI-12N	IRRIGATION PLAN - LINCOLN ROAD
LI-1	IRRIGATION SCHEDULE
LI-2	IRRIGATION SCHEDULE
LI-3	IRRIGATION SCHEDULE

SCALE: 1" = 20' (HORZ)
1" = 2' (VERT)

LANDSCAPE GENERAL NOTES

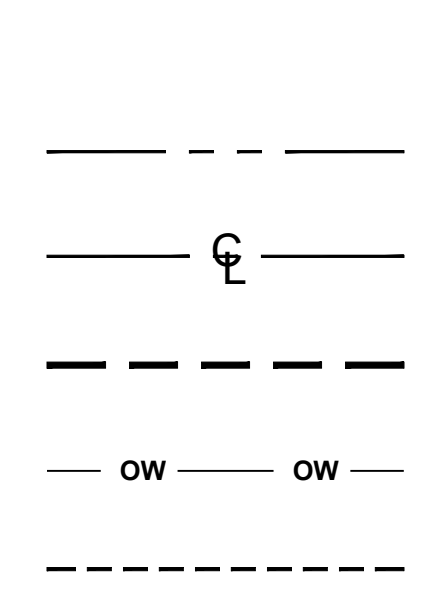
- All plants furnished by the Landscape Contractor unless otherwise specified shall be Florida No.1 or better, and shall be specified in Grades and Standards for Nursery Plants, Part 1 by the Florida Department of Agriculture and Consumer Services Division of the plant industry.
- All shrubs and groundcovers shall be guaranteed for six months from date of final acceptance. All trees and palms shall be guaranteed for one year from date of final acceptance. The Contractor shall be responsible to remove all the failing plant materials and replace them with the same kind and size material as specified in the plant list, with the same guarantee as initial planting.
- Contractor shall familiarize him/herself with the limits of work and existing conditions and verify all information. No changes shall be made without the prior, written consent of the Landscape Architect and/or Owner.
- Any substitution in size and/or plant material must be approved by the Landscape Architect in writing. All plants will be subject to approval by the Landscape Architect and/or owner's representative before planting can begin.
- All biodegradable burlap shall be untied and pulled down on the ball. Wire baskets and other non-biodegradable material attached to plants shall be removed prior to planting. Care shall be taken not to break or disturb rootball of plants.
- All plants shall be watered immediately after planting, and there after per specification.
- Planting soil shall be weed-free, and consist of 70% clean, coarse, sharp, Lake Wales Silica Sand (alternate: Ortona or FDOT #3 coarse silica sand) and 30% Everglades muck mixed with the approved, native, soil in a ONE-THIRDS (1/3) ratio of planting soil, and TWO-THIRDS (2/3) ratio of planting hole/bed excavation soil - or approved Topsoil Stockpile.

FDOT #3 particle size distribution		
Screen Size	%	
#16/1-18 mm	6	
#30/.60 mm	51	
#50/.30 mm	87	
#100/.15 mm	98	
#200/.75 mm	99	
FM	2.42	

- All planting beds to be weed and grass free. Contractor shall apply herbicide to soil as recommended by manufacturer.
- Contractor shall notify all necessary utility companies 48 hours minimum prior to digging for verification of all underground utilities and other obstructions and coordinate with owner's representative in writing prior to initiating operations.
- Landscape Contractor shall locate and verify all underground utilities and obtain As-Built information prior to digging.
- All trees and palms shall be staked as shown in the plans. No nail staking permitted.
- Typically, shrub and groundcover plantings are shown as mass planting beds. Plants shall be placed on a triangular spacing configuration (staggered spacing). Plant center to center dimensions (O.C.) are listed on the plant list.
- The Contractor shall bear all costs of testing of soils, amendments, etc. associated with the work and included in the specifications.
- All trees shall be fertilized at installation with "Agriform Pills", 21 gram size, with a 20-10-5 formulation, (or approved equal), according to manufacturer's recommendations.
- All palms and other plants shall be fertilized at installation with Florida Atlantic East Coast Fertilizer "Palm Special" 8-4-12 time-release fertilizer (with slow release sulphur) according to manufacturer's

recommendations, unless otherwise approved by the Landscape Architect.

- Cover all planting beds with a minimum of 3" layer of City Standard brown mulch.
- Where quantities and/or species differ between the planting plan(s) and the plant list, the plan(s) shall govern.
- A fully automatic, zoned irrigation system, equipped with an approved rain sensor and providing 100% coverage of planted areas with minimum 50% overlap, shall be installed by the Contractor. Adjust irrigation nozzle spray to avoid overspray onto adjacent sidewalks, asphalt paving, and properties.
- Place and maintain protective barriers around the drip line of all trees to be retained on site. These barriers shall be easily visible and sturdily constructed. No heavy equipment or materials shall be stored within the drip line of protected trees. Any trees or palms designated to remain on-site which the City determines to have been damaged during construction shall promptly be replaced with plants of equivalent size and value as required at no cost to the City.
- Loss of branches 4" or greater due to transport and install are the responsibility of the GC and grounds for immediate rejection by Landscape Architect.
- All plans with reference to outdoor improvements, such as Civil, MEP, Structural, etc. shall be provided to the Landscape Architect in CAD format for review a minimum of 2 weeks before final Construction Document submission for bidding.
- Should any corrective structural pruning be necessary for trees proposed to remain onsite, due to clearance, safety or for construction related reasons the pruning shall be performed by an ISA or ASCA Certified Arborist in accordance with the latest version of the ANSI A-300 pruning standards and good horticultural practices.
- Care shall be taken to avoid utility or construction trenching through existing tree or palm driplines of trees slated to remain in place or be relocated. If construction requires the cutting of any roots with a diameter of 2" or greater, roots shall be cleanly cut with a sharp tool, as directed by an ISA Certified Arborist, and in accordance with the ANSI A-300 standards. Cut roots should be immediately covered with soil to prevent drying. Roots should not be torn or broken by heavy equipment, and no shredded, ragged or broken root ends should be left.

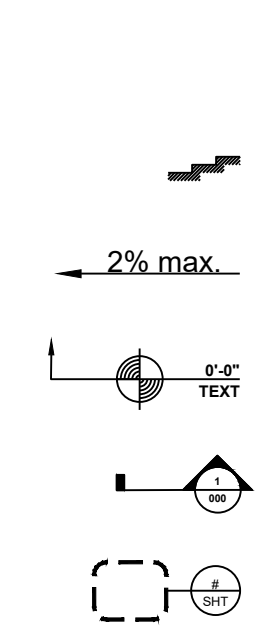


LINETYPE LEGEND

- R.O.W.
- CENTER LINE
- MATCH LINE
- OVERHEAD/ABOVE
- ROOT BARRIER

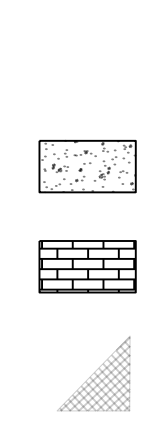
ABBREVIATION

- ABOV. Above
- R.O.W. Right of Way
- ASPH. Asphalt
- BLDG. Building
- CL. Center Line
- Conc. Concrete
- DN. Down
- F.F.E. Finish Floor Elevation
- max. Maximum
- min. Minimum
- ML. Monument Line
- PL. Property Line
- Plant. Planting Area
- QNTY. Quantity
- SDWK. Sidewalk
- T.O.W. Top of Wall
- Typ. Typical
- UP. Up



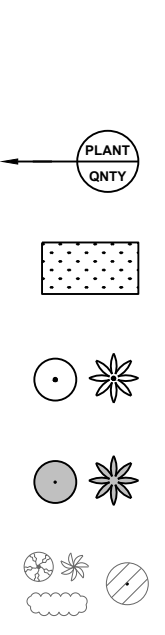
DRAWING SYMBOL LEGEND

- STEPS
- RAMPS
- ELEVATION MARKER
- SECTION MARKER SECTION # SHEET #
- ENLARGEMENT DETAIL # SHEET #



GENERAL SYMBOL LEGEND

- PROPOSED CONCRETE SIDEWALK
- PROPOSED CONCRETE PAVERS
- DRIVEWAY SIGHT VISIBILITY TRIANGLE (NOT IN R.O.W.)



PLANTING SYMBOL LEGEND

- PLANT TAG
- PROPOSED GREEN SPACE
- PROPOSED TREES & PALMS
- EXISTING TREES & PALMS (IN R.O.W.)
- EXISTING TREES & PALMS & SHRUBS (NOT IN R.O.W.)

SCALE: 1" = 20' (HORZ)
1" = 2' (VERT)

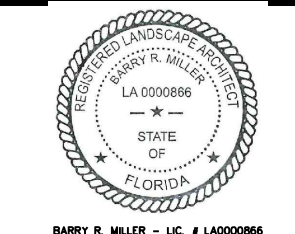


NEIGHBORHOOD: **2016 - 091-KB WEST AVE PHASE II IMPROVEMENTS SOUTH OF 14TH STREET**
TITLE: **LANDSCAPE GENERAL NOTES**



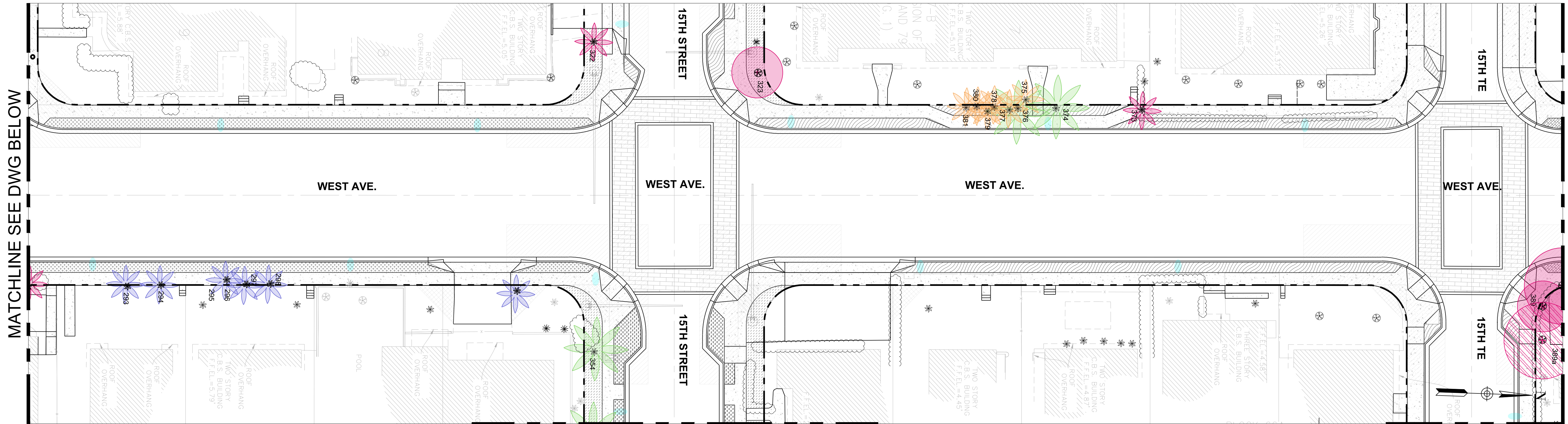
CITY MANAGER: JIMMY L. MORALES
DIRECTOR: ROY COLEY
CITY ENGINEER: NELSON PEREZ-JACOME

L.A. OF RECORD: BRM
DESIGN L.A.: BRM
DRAWN BY: XD
CHECKER: BRM
SCALE: AS NOTED



NO.	DATE	REVISION	APP'D. BY
B	10/21/21	90% DESIGN RE-SUBMITTAL	
A	4/9/21	60% DESIGN RE-SUBMITTAL	

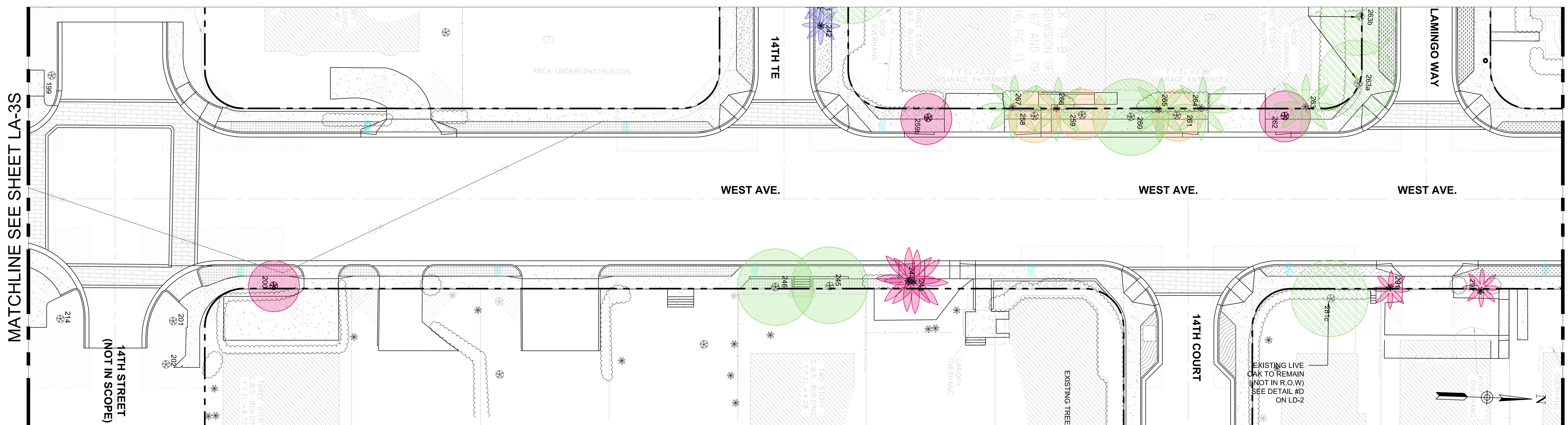
File Name: LD-WEST AVENUE-NORTH-DETAILS- RE 90% CD.dwg
Survey Reference:
Field Book: _____ Page: _____ Work Order: 2016-091-KB
Date: 10/21/21 Sheet: **LG-N** Drawing: _____



FOR TREE MITIGATION ON 15TH ST. SEE LT-9N

PLAN

FOR TREE MITIGATION ON 15TH TE SEE LT-10N

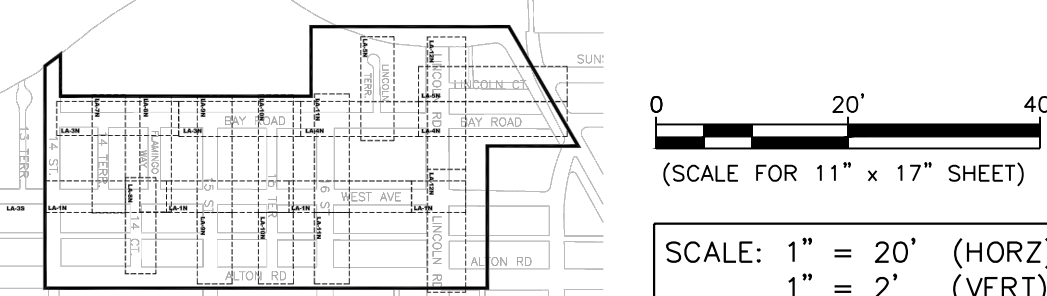


FOR TREE MITIGATION ON 14TH CT. SEE LT-8N

PLAN

FOR TREE MITIGATION ON 14TH CT. SEE LT-8N

PRESERVED - FIRST PRIORITY (OVER 12" DBH) SPECIMEN TREES RELOCATABLE SPECIMEN TREES NON - RELOCATABLE SPECIMEN PALMS RELOCATABLE TREES NOT IN R.O.W		PRESERVED - SECOND PRIORITY (7"-11" DBH) LARGE TREES RELOCATABLE LARGE TREES NON - RELOCATABLE LARGE PALMS RELOCATABLE		REMOVED & POTENTIAL TRANSPLANT BY OTHERS REMOVED TREES NO TRANSPLANT REMOVED TREES POTENTIAL TRANSPLANT REMOVED PALMS NO TRANSPLANT REMOVED PALMS POTENTIAL TRANSPLANT	
---	--	--	--	---	--



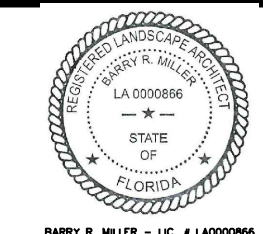
MIAMI BEACH
PUBLIC WORKS DEPARTMENT
1700 CONVENTION CENTER DRIVE, MIAMI BEACH, FL 33139

NEIGHBORHOOD: **2016 - 091-KB WEST AVE PHASE II IMPROVEMENTS NORTH OF 14TH STREET**
TITLE: **TREE MITIGATION PLAN**



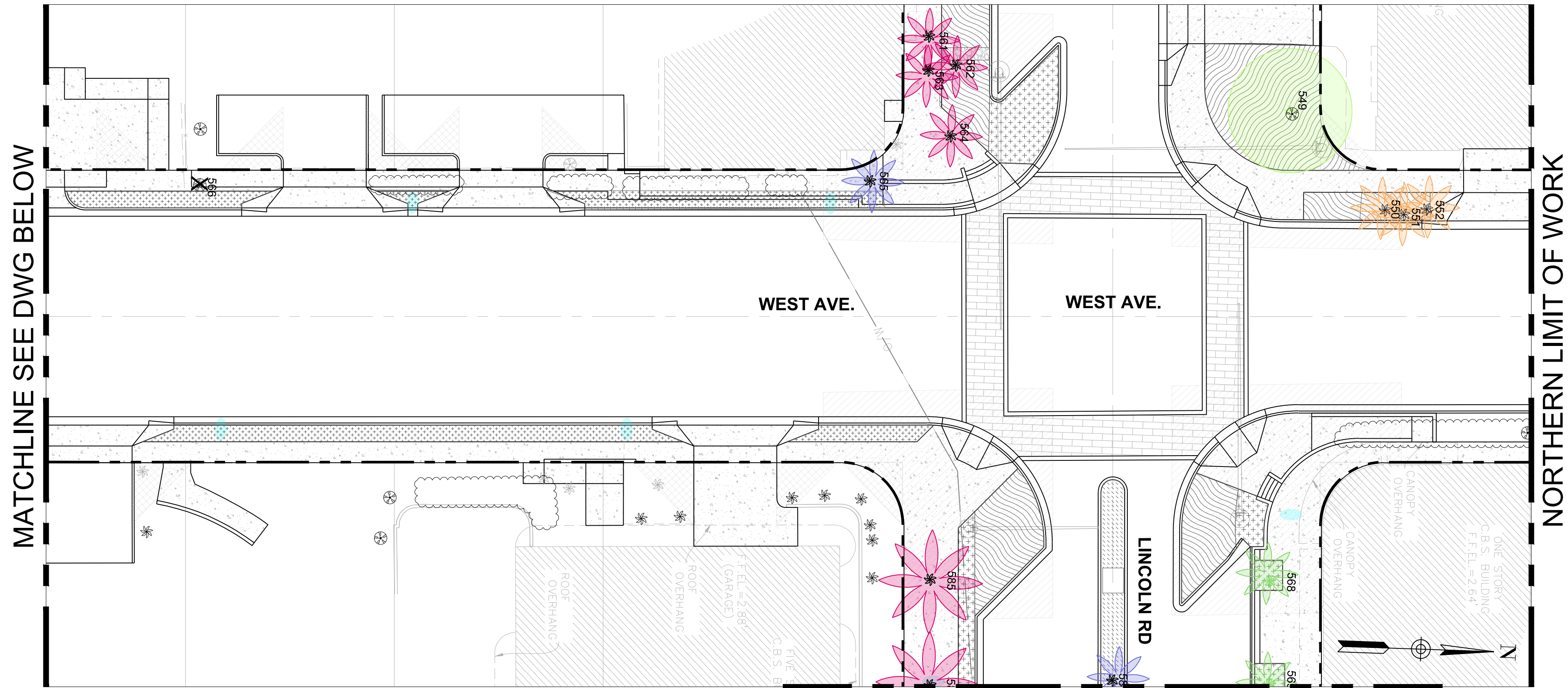
CITY MANAGER: JIMMY L. MORALES
DIRECTOR: ROY COLEY
CITY ENGINEER: NELSON PEREZ-JACOME

L.A. OF RECORD: BRM
DESIGN L.A.: BRM
DRAWN BY: XD
CHECKER: BRM
SCALE: AS NOTED

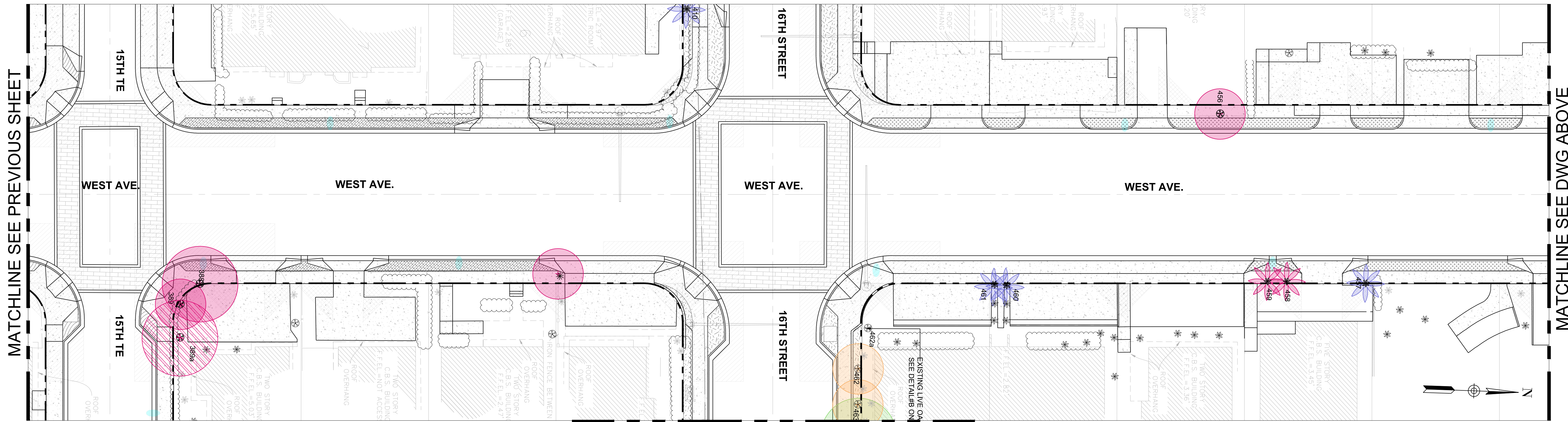


NO.	DATE	REVISION
B	10/21/21	90% DESIGN RE-SUBMITTAL
A	4/9/21	60% DESIGN RE-SUBMITTAL

File Name: LT-WEST AVENUE-NORTH- RE 90% CD.dwg
Survey Reference:
Field Book: _____ Page: _____ Work Order: 2016-091-KB
Date: 10/21/21 Sheet: **LT-1N** Drawing: _____

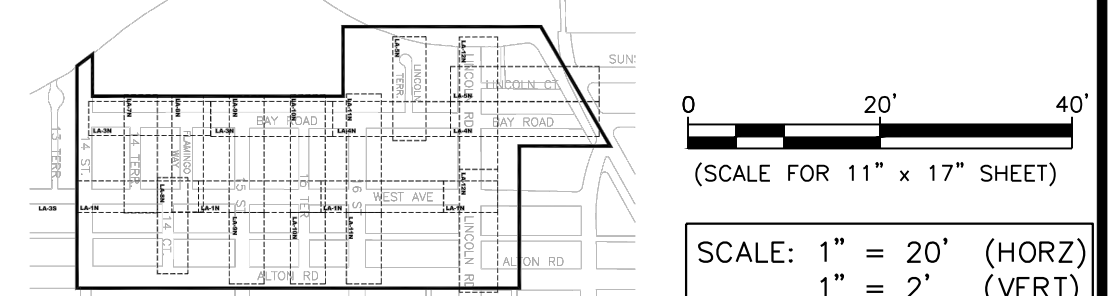


PLAN FOR TREE MITIGATION ON LINCOLN RD. SEE LT-12N



PLAN FOR TREE MITIGATION ON 16TH ST. SEE LT-7&11N

PRESERVED - FIRST PRIORITY (OVER 12" DBH) SPECIMEN TREES RELOCATABLE SPECIMEN TREES NON - RELOCATABLE SPECIMEN PALMS RELOCATABLE TREES NOT IN R.O.W.		PRESERVED - SECOND PRIORITY (7"-11" DBH) LARGE TREES RELOCATABLE LARGE TREES NON - RELOCATABLE		REMOVED & POTENTIAL TRANSPLANT BY OTHERS REMOVED TREES NO TRANSPLANT REMOVED TREES POTENTIAL TRANSPLANT REMOVED PALMS NO TRANSPLANT REMOVED PALMS POTENTIAL TRANSPLANT	
--	--	---	--	---	--



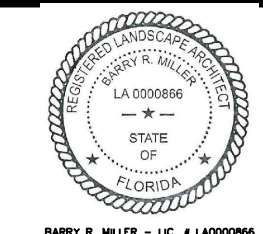
MIAMI BEACH
PUBLIC WORKS DEPARTMENT
1700 CONVENTION CENTER DRIVE, MIAMI BEACH, FL 33139

NEIGHBORHOOD: **2016 - 091-KB WEST AVE PHASE II IMPROVEMENTS NORTH OF 14TH STREET**
TITLE: **TREE MITIGATION PLAN**

savinomiller
ARCHITECTURE | PLANNING | DESIGN | ENGINEERING

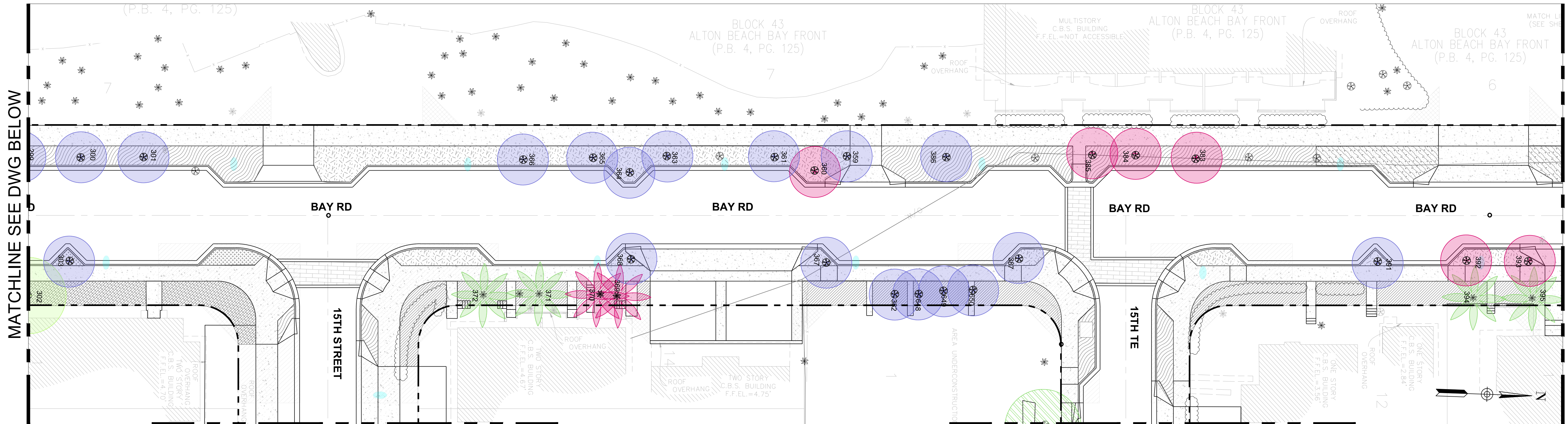
CITY MANAGER: JIMMY L. MORALES
DIRECTOR: ROY COLEY
CITY ENGINEER: NELSON PEREZ-JACOME

L.A. OF RECORD: BRM
DESIGN L.A.: BRM
DRAWN BY: XD
CHECKER: BRM
SCALE: AS NOTED



NO.	DATE	REVISION
B	10/21/21	90% DESIGN RE-SUBMITTAL
A	4/9/21	60% DESIGN RE-SUBMITTAL

File Name: LT-WEST AVENUE-NORTH- RE 90% CD.dwg
Survey Reference:
Field Book: _____ Page: _____ Work Order: 2016-091-KB
Date: 10/21/21 Sheet: **LT-2N** Drawing: _____



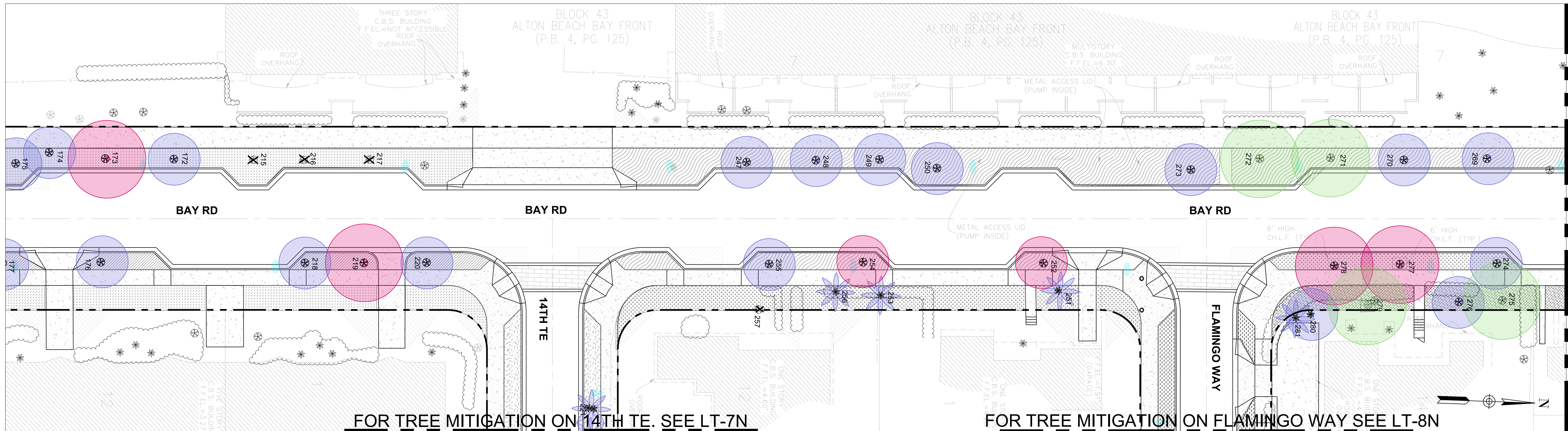
MATCHLINE SEE DWG BELOW

MATCHLINE SEE DWG NEXT SHEET

FOR TREE MITIGATION ON 15TH ST. SEE LT-9N

BAY ROAD PLAN

FOR TREE MITIGATION ON 15TH TE. SEE LA-10N



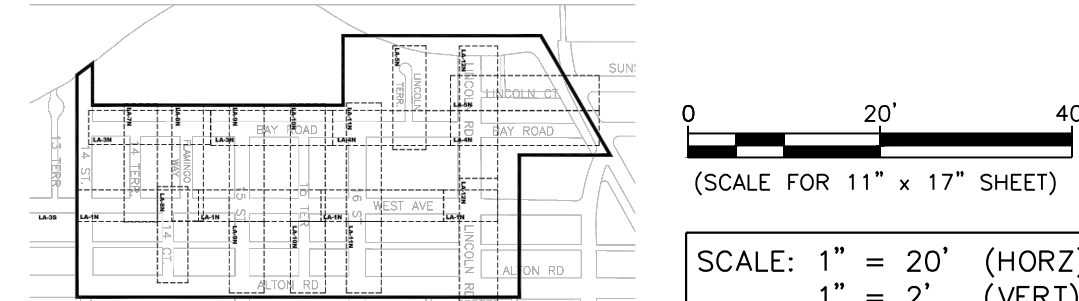
FOR TREE MITIGATION ON 14TH TE. SEE LT-7N

BAY ROAD PLAN

FOR TREE MITIGATION ON FLAMINGO WAY SEE LT-8N

MATCHLINE SEE DWG ABOVE

PRESERVED - FIRST PRIORITY (OVER 12" DBH)		PRESERVED - SECOND PRIORITY (7"-11" DBH)		REMOVED & POTENTIAL TRANSPLANT BY OTHERS	
	SPECIMEN TREES RELOCATABLE		LARGE TREES RELOCATABLE		REMOVED TREES NO TRANSPLANT
	SPECIMEN PALMS RELOCATABLE		LARGE PALMS RELOCATABLE		REMOVED PALMS NO TRANSPLANT
	SPECIMEN TREES NON - RELOCATABLE		LARGE TREES NON - RELOCATABLE		REMOVED TREES POTENTIAL TRANSPLANT
	TREES NOT IN R.O.W				REMOVED PALMS POTENTIAL TRANSPLANT



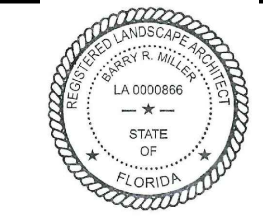
MIAMI BEACH
PUBLIC WORKS DEPARTMENT
1700 CONVENTION CENTER DRIVE, MIAMI BEACH, FL 33139

NEIGHBORHOOD: **2016 - 091-KB WEST AVE PHASE II IMPROVEMENTS NORTH OF 14TH STREET**
TITLE: **TREE MITIGATION PLAN**



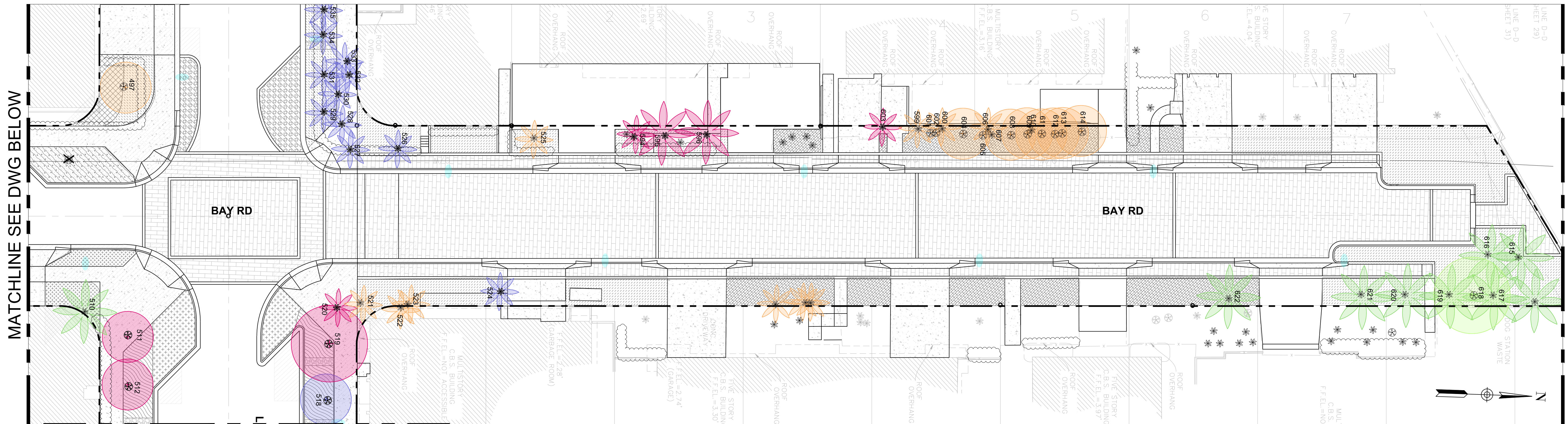
CITY MANAGER: JIMMY L. MORALES
DIRECTOR: ROY COLEY
CITY ENGINEER: NELSON PEREZ-JACOME

L.A. OF RECORD: BRM
DESIGN L.A.: BRM
DRAWN BY: XD
CHECKER: BRM
SCALE: AS NOTED



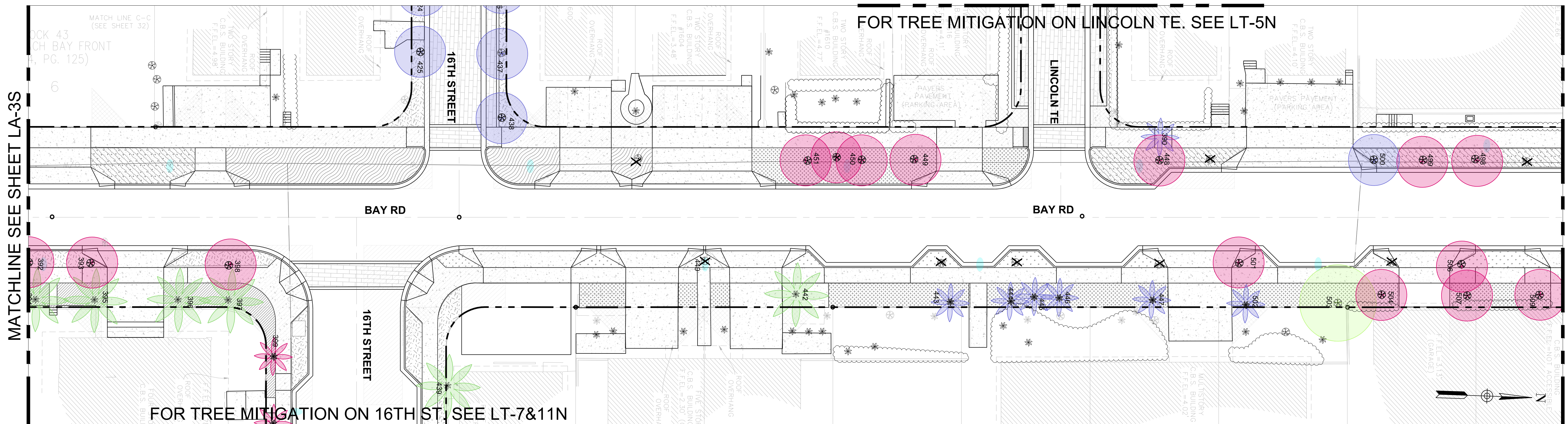
NO.	DATE	REVISION
B	10/21/21	90% DESIGN RE-SUBMITTAL
A	4/9/21	60% DESIGN RE-SUBMITTAL

File Name: LT-WEST AVENUE-NORTH- RE 90% CD.dwg
Survey Reference:
Field Book: _____ Page: _____ Work Order: 2016-091-KB
Date: 10/21/21 Sheet: **LT-3N** Drawing: _____



FOR TREE MITIGATION ON LINCOLN RD. SEE LT-12N

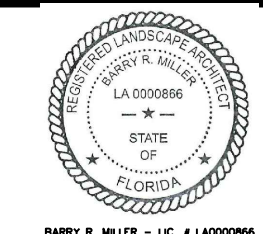
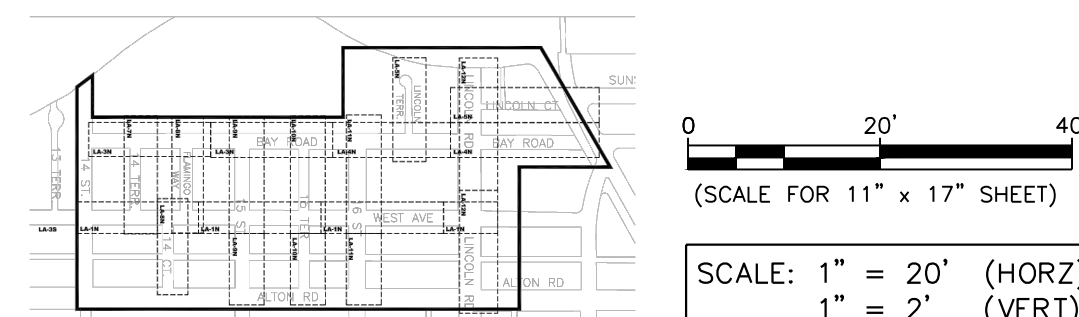
BAY ROAD PLAN



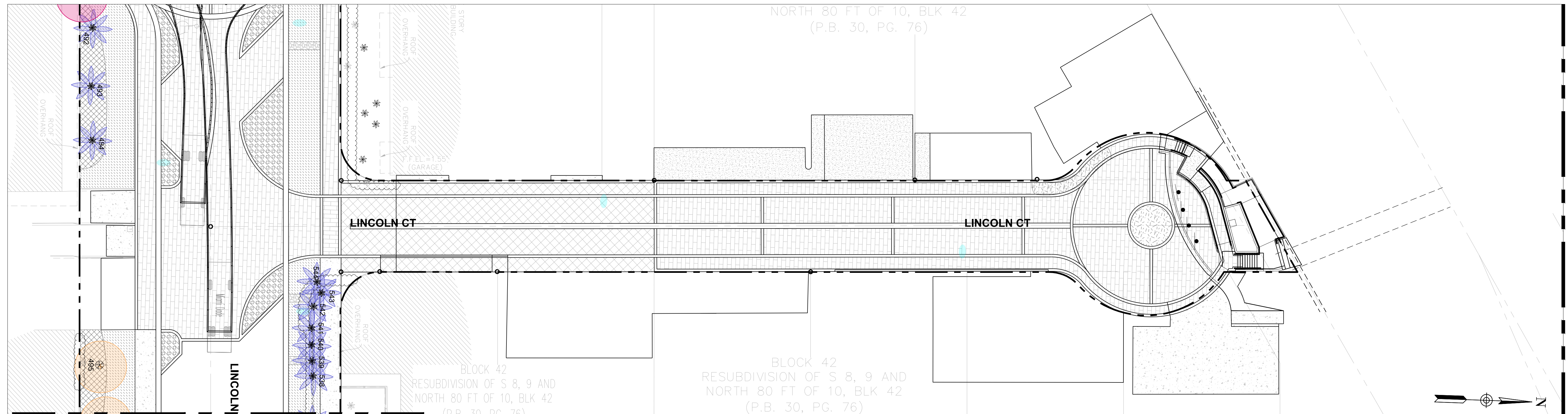
FOR TREE MITIGATION ON 16TH ST. SEE LT-7&11N

BAY ROAD PLAN

PRESERVED - FIRST PRIORITY (OVER 12" DBH)		PRESERVED - SECOND PRIORITY (7"-11" DBH)		REMOVED & POTENTIAL TRANSPLANT BY OTHERS	
	SPECIMEN TREES RELOCATABLE		LARGE TREES RELOCATABLE		REMOVED TREES NO TRANSPLANT
	SPECIMEN PALMS RELOCATABLE		LARGE PALMS RELOCATABLE		REMOVED PALMS NO TRANSPLANT
	SPECIMEN TREES NON - RELOCATABLE		LARGE TREES NON - RELOCATABLE		REMOVED TREES POTENTIAL TRANSPLANT
	TREES NOT IN R.O.W				REMOVED PALMS POTENTIAL TRANSPLANT

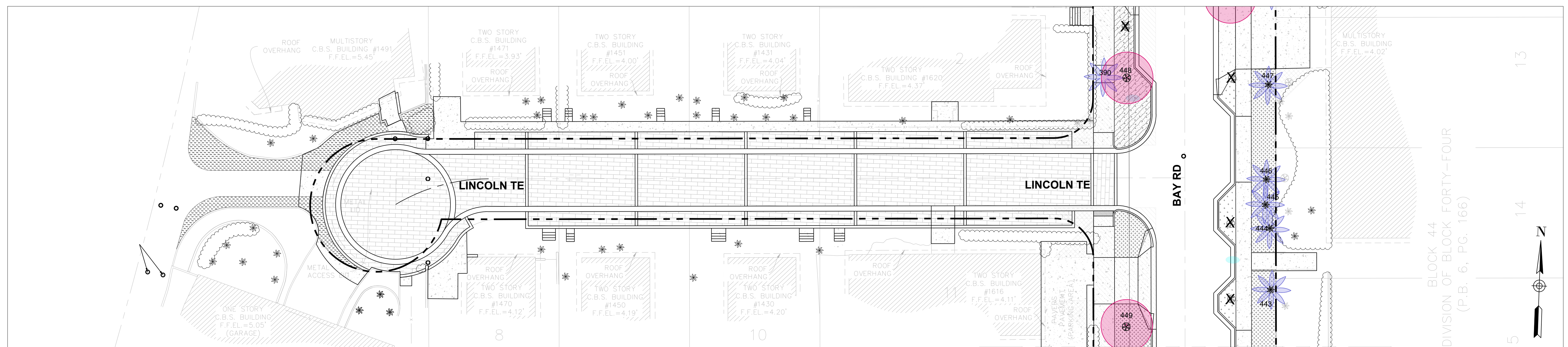


NO.	DATE	REVISION
B	10/21/21	90% DESIGN RE-SUBMITTAL
A	4/9/21	60% DESIGN RE-SUBMITTAL



FOR TREE MITIGATION ON LINCOLN RD. SEE LT-12N

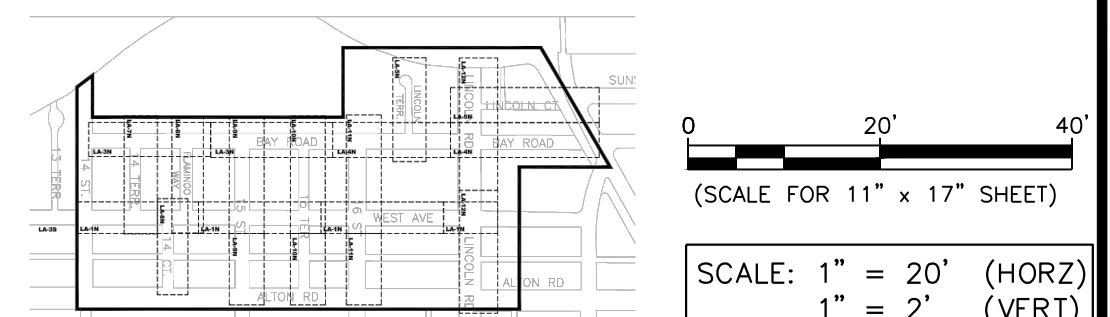
LINCOLN COURT PLAN



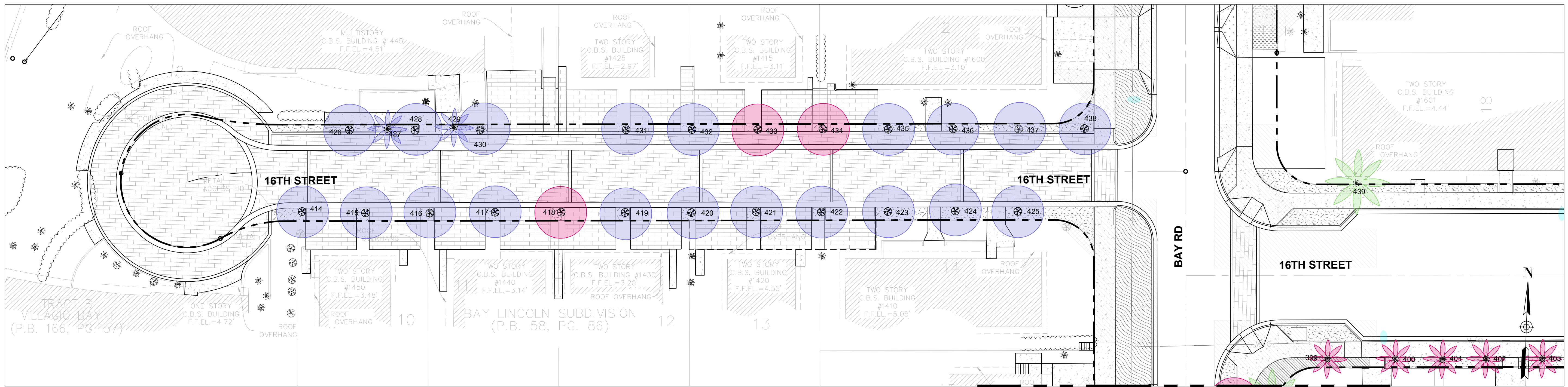
FOR TREE MITIGATION ON BAY RD. SEE LT-4N

LINCOLN TERRACE PLAN

PRESERVED - FIRST PRIORITY (OVER 12" DBH)		PRESERVED - SECOND PRIORITY (7"-11" DBH)		REMOVED & POTENTIAL TRANSPLANT BY OTHERS	
	SPECIMEN TREES RELOCATABLE		SPECIMEN PALMS RELOCATABLE		REMOVED TREES NO TRANSPLANT
	SPECIMEN TREES NON - RELOCATABLE		LARGE TREES RELOCATABLE		REMOVED PALMS NO TRANSPLANT
	TREES NOT IN R.O.W		LARGE PALMS RELOCATABLE		REMOVED TREES POTENTIAL TRANSPLANT
	LARGE TREES NON - RELOCATABLE		LARGE TREES POTENTIAL TRANSPLANT		REMOVED PALMS POTENTIAL TRANSPLANT

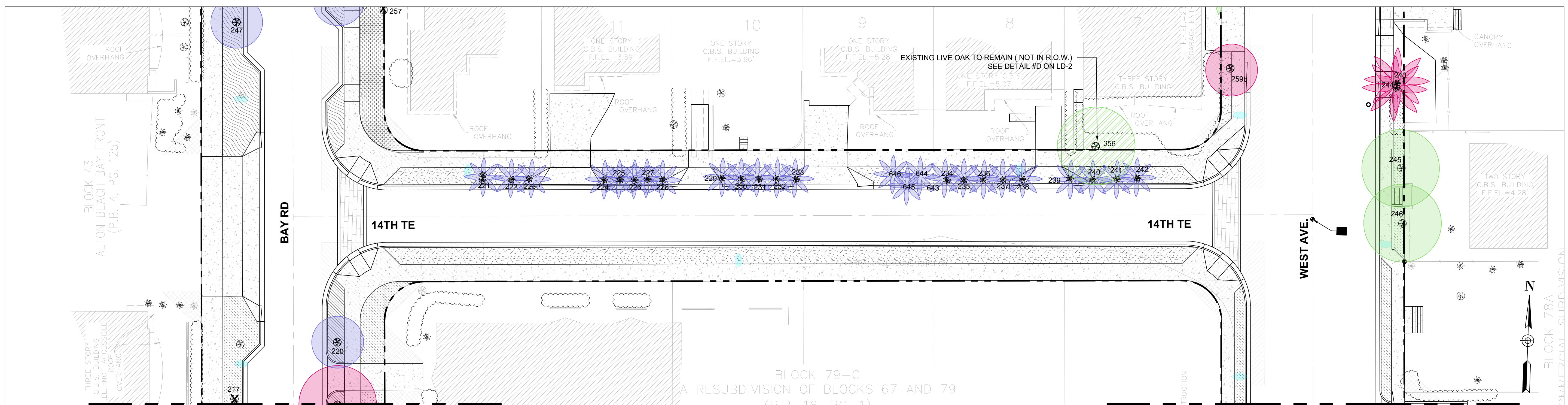


 1700 CONVENTION CENTER DRIVE, MIAMI BEACH, FL 33139	NEIGHBORHOOD: 2016 - 091-KB WEST AVE PHASE II IMPROVEMENTS NORTH OF 14TH STREET	 CITY MANAGER: JIMMY L. MORALES DIRECTOR: ROY COLEY CITY ENGINEER: NELSON PEREZ-JACOME	L.A. OF RECORD: BRM DESIGN L.A.: BRM DRAWN BY: XD CHECKER: BRM SCALE: AS NOTED		File Name: LT-WEST AVENUE-NORTH- RE 90% CD.dwg Survey Reference: Field Book: _____ Page: _____ Work Order: 2016-091-KB						
	TITLE: TREE MITIGATION PLAN		<table border="1"> <thead> <tr> <th>NO</th> <th>DATE</th> <th>REVISION</th> </tr> </thead> <tbody> <tr> <td>B</td> <td>10/21/21</td> <td>90% DESIGN RE-SUBMITTAL</td> </tr> <tr> <td>A</td> <td>4/9/21</td> <td>60% DESIGN RE-SUBMITTAL</td> </tr> </tbody> </table>		NO	DATE	REVISION	B	10/21/21	90% DESIGN RE-SUBMITTAL	A
NO	DATE	REVISION									
B	10/21/21	90% DESIGN RE-SUBMITTAL									
A	4/9/21	60% DESIGN RE-SUBMITTAL									



16TH STREET END PLAN

FOR TREE MITIGATION ON BAY RD. SEE LT-4N

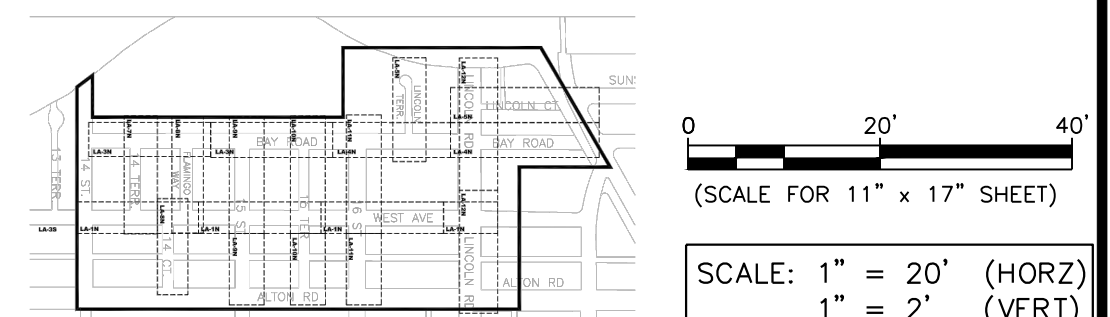


14TH TERRACE PLAN

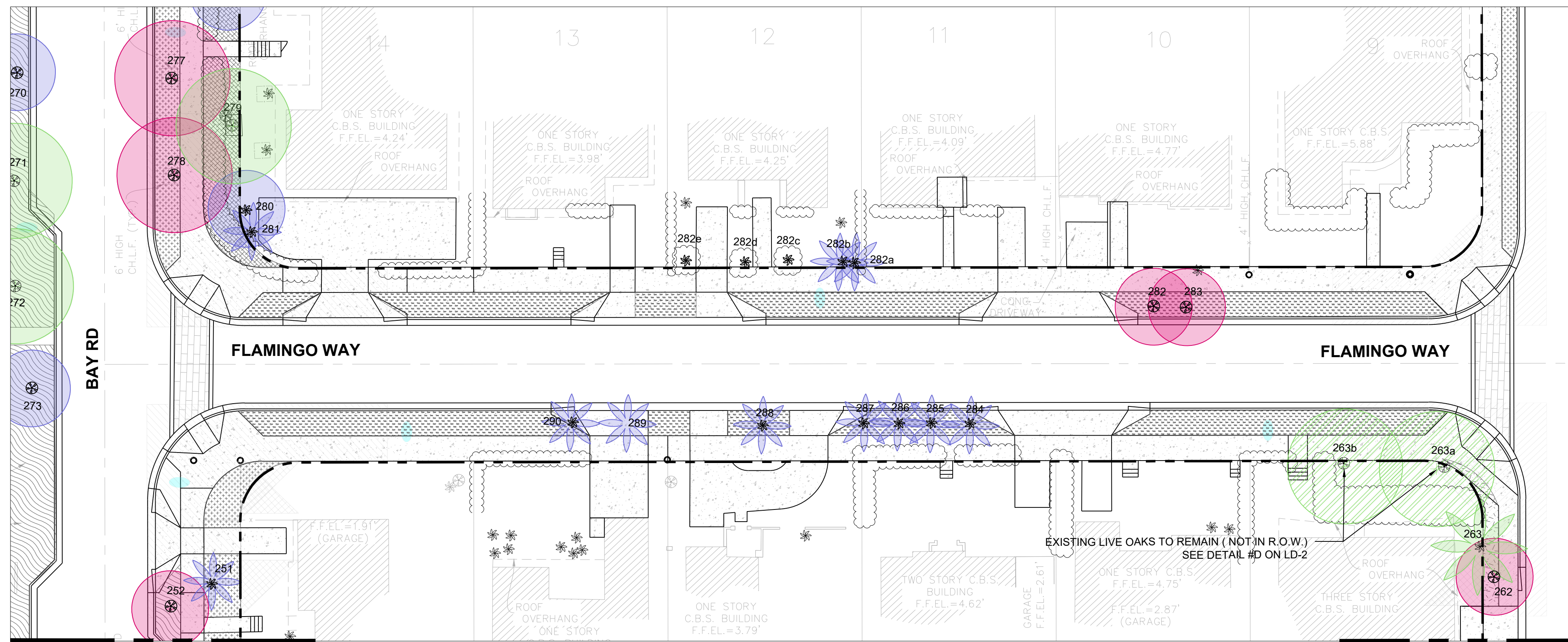
FOR TREE MITIGATION ON BAY RD. SEE LT-3N

FOR TREE MITIGATION ON WEST AVE. SEE LT-1N

PRESERVED - FIRST PRIORITY (OVER 12" DBH)		PRESERVED - SECOND PRIORITY (7"-11" DBH)		REMOVED & POTENTIAL TRANSPLANT BY OTHERS	
SPECIMEN TREES RELOCATABLE	SPECIMEN PALMS RELOCATABLE	LARGE TREES RELOCATABLE	LARGE PALMS RELOCATABLE	REMOVED TREES NO TRANSPLANT	REMOVED PALMS NO TRANSPLANT
SPECIMEN TREES NON - RELOCATABLE	TREES NOT IN R.O.W	LARGE TREES NON - RELOCATABLE		REMOVED TREES POTENTIAL TRANSPLANT	REMOVED PALMS POTENTIAL TRANSPLANT



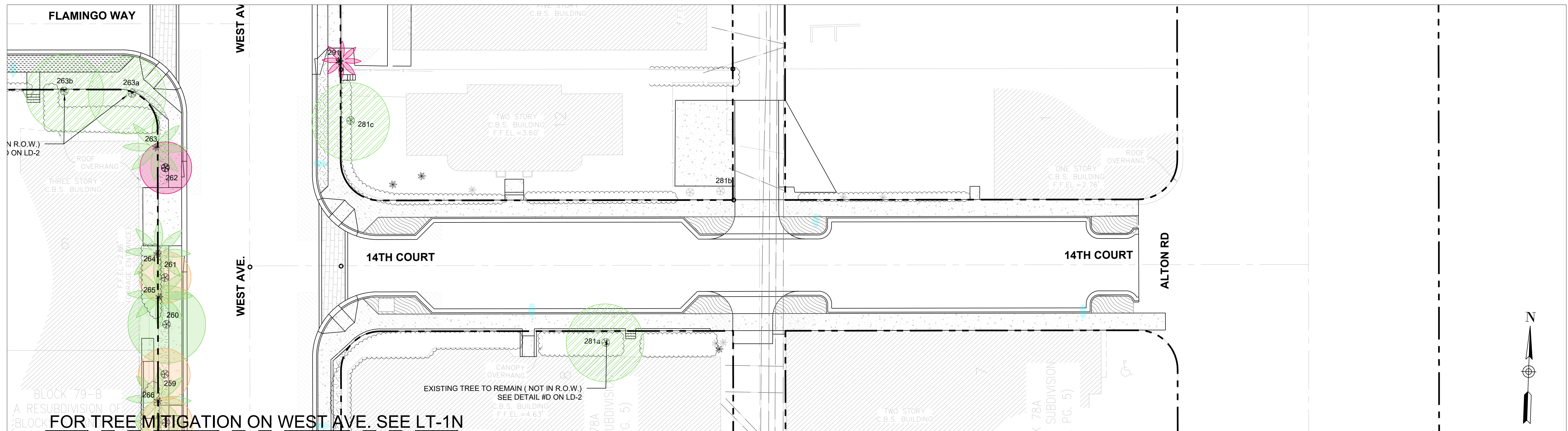
	NEIGHBORHOOD: 2016 - 091-KB WEST AVE PHASE II IMPROVEMENTS NORTH OF 14TH STREET		CITY MANAGER: JIMMY L. MORALES DIRECTOR: ROY COLEY CITY ENGINEER: NELSON PEREZ-JACOME	L.A. OF RECORD: BRM DESIGN L.A.: BRM DRAWN BY: XD CHECKER: BRM SCALE: AS NOTED		File Name: LT-WEST AVENUE-NORTH- RE 90% CD.dwg Survey Reference: Field Book: _____ Page: _____ Work Order: 2016-091-KB
	TITLE: TREE MITIGATION PLAN		NO. DATE REVISION APPD. BY	Date: 10/21/21 Sheet: LT-7N Drawing: _____		



FOR TREE MITIGATION ON BAY RD. SEE LT-3N

FLAMINGO WAY PLAN

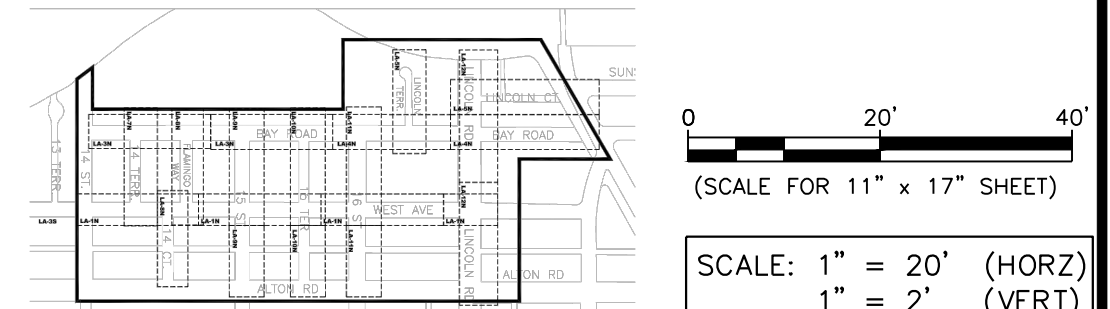
FOR TREE MITIGATION ON WEST AVE. SEE LT-1N



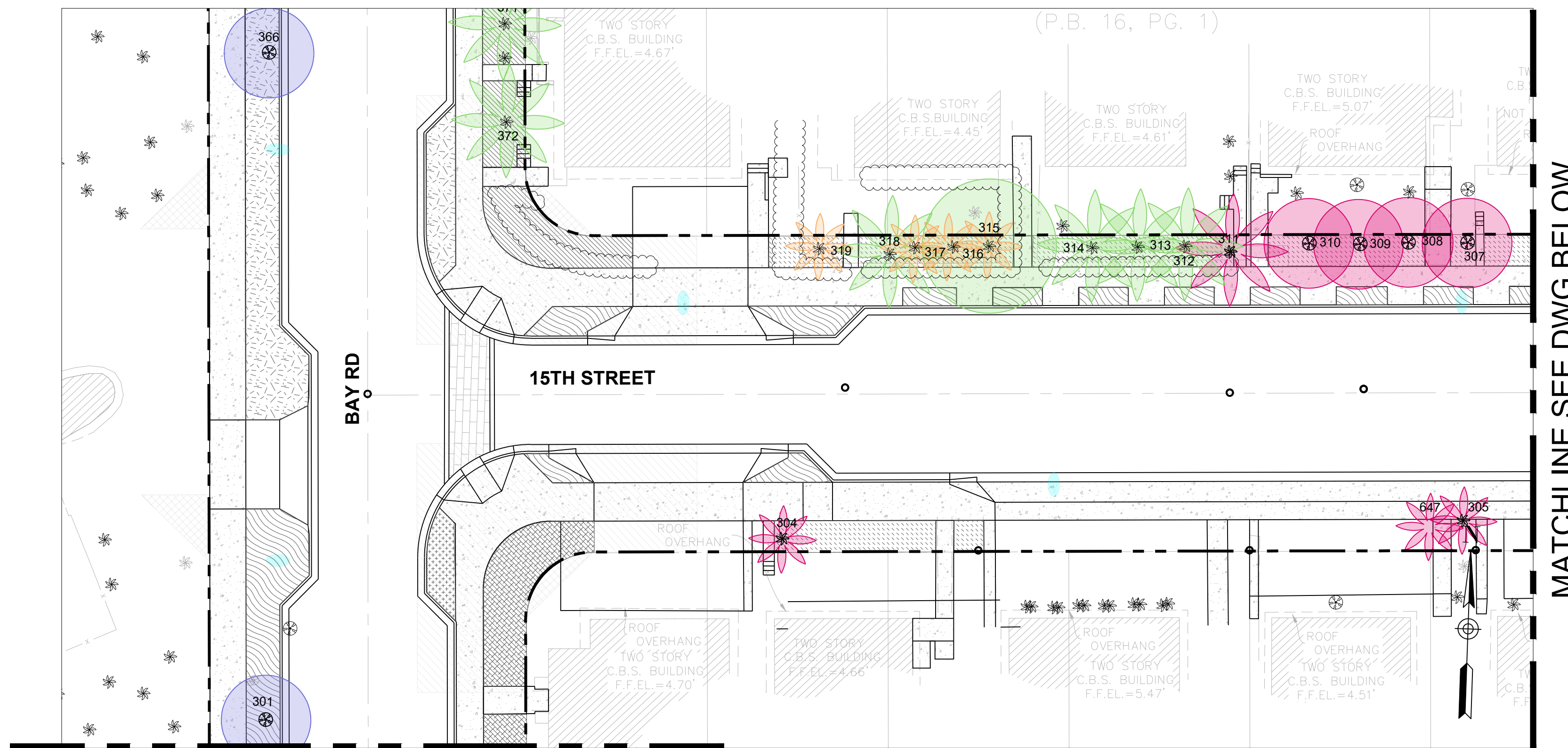
FOR TREE MITIGATION ON WEST AVE. SEE LT-1N

14TH COURT PLAN

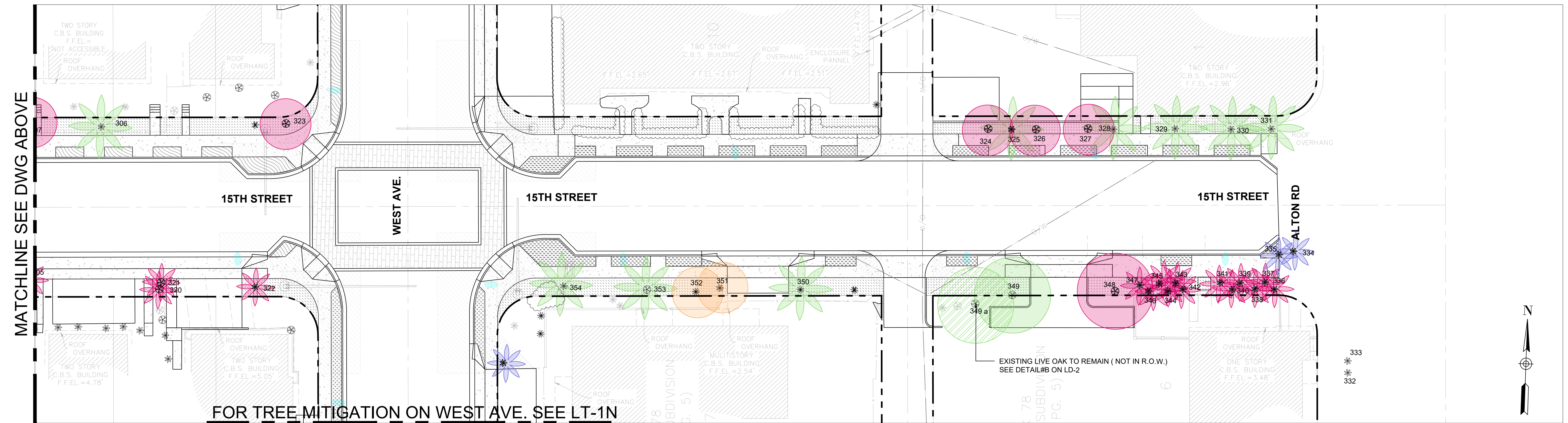
PRESERVED - FIRST PRIORITY (OVER 12" DBH)		PRESERVED - SECOND PRIORITY (7"-11" DBH)		REMOVED & POTENTIAL TRANSPLANT BY OTHERS	
	SPECIMEN TREES RELOCATABLE		SPECIMEN PALMS RELOCATABLE		REMOVED TREES NO TRANSPLANT
	SPECIMEN TREES NON - RELOCATABLE		TREES NOT IN R.O.W.		REMOVED TREES POTENTIAL TRANSPLANT
	LARGE TREES RELOCATABLE		LARGE PALMS RELOCATABLE		REMOVED PALMS NO TRANSPLANT
	LARGE TREES NON - RELOCATABLE				REMOVED PALMS POTENTIAL TRANSPLANT



NO.	DATE	REVISION	APPD. BY
B	10/21/21	90% DESIGN RE-SUBMITTAL	
A	4/9/21	60% DESIGN RE-SUBMITTAL	



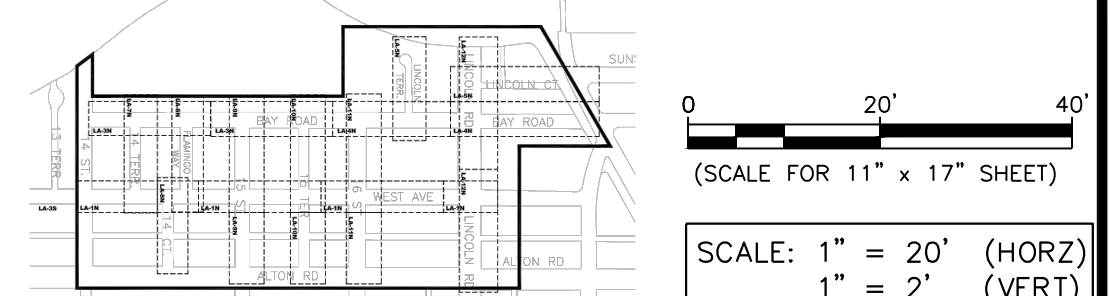
FOR TREE MITIGATION ON BAY RD. SEE LT-3N 15TH STREET PLAN



FOR TREE MITIGATION ON WEST AVE. SEE LT-1N

15TH STREET PLAN

PRESERVED - FIRST PRIORITY (OVER 12" DBH)		PRESERVED - SECOND PRIORITY (7"-11" DBH)		REMOVED & POTENTIAL TRANSPLANT BY OTHERS	
	SPECIMEN TREES RELOCATABLE		SPECIMEN PALMS RELOCATABLE		REMOVED TREES NO TRANSPLANT
	SPECIMEN TREES NON - RELOCATABLE		LARGE TREES RELOCATABLE		REMOVED PALMS NO TRANSPLANT
	TREES NOT IN R.O.W		LARGE PALMS RELOCATABLE		REMOVED TREES POTENTIAL TRANSPLANT
			LARGE TREES NON - RELOCATABLE		REMOVED PALMS POTENTIAL TRANSPLANT

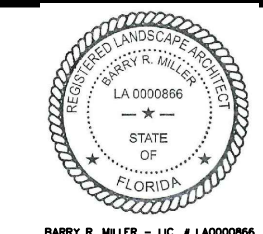


MIAMI BEACH
PUBLIC WORKS DEPARTMENT
1700 CONVENTION CENTER DRIVE, MIAMI BEACH, FL 33139

NEIGHBORHOOD: **2016 - 091-KB WEST AVE PHASE II IMPROVEMENTS NORTH OF 14TH STREET**
TITLE: **TREE MITIGATION PLAN**

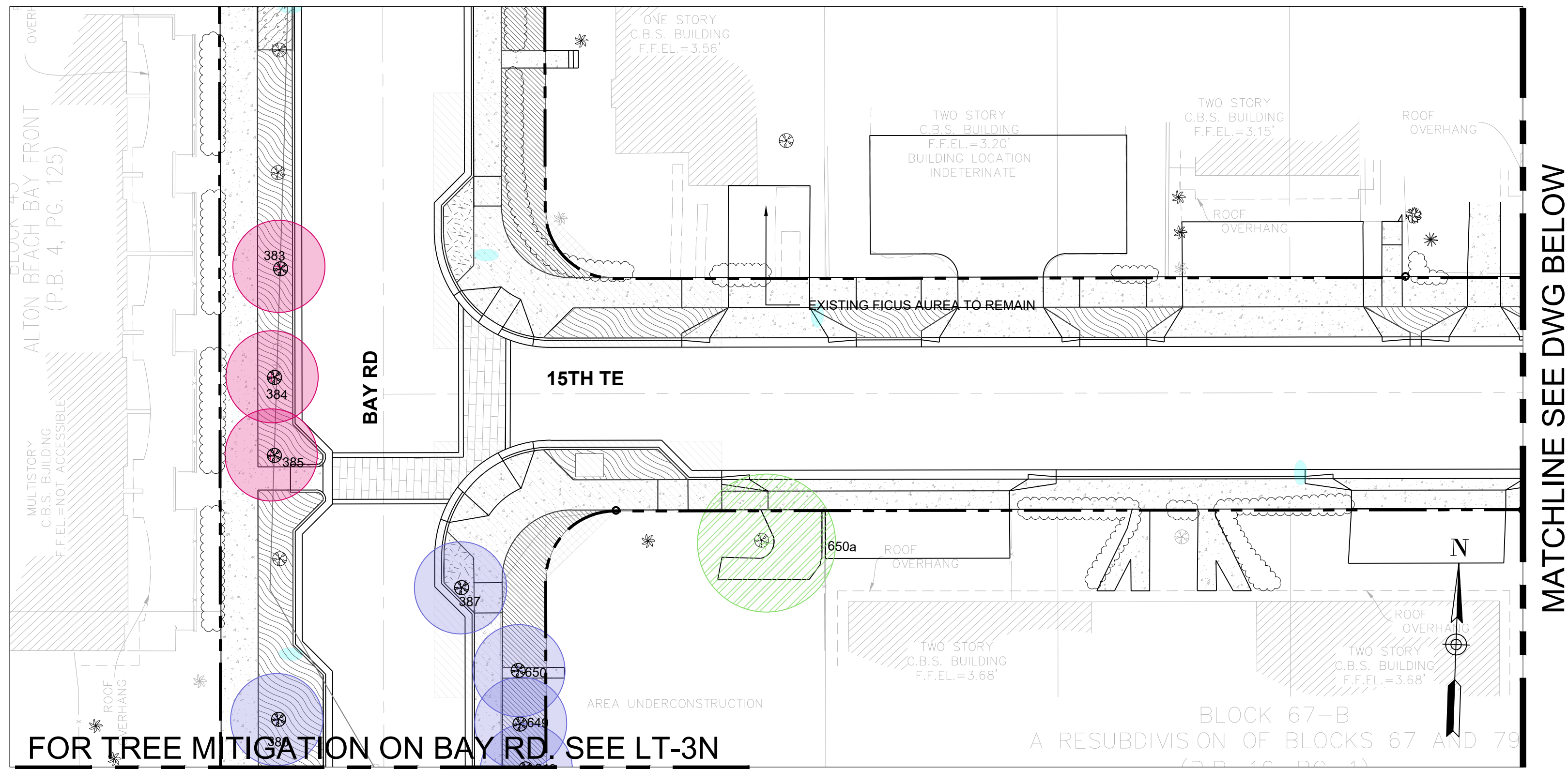
savinomiller DESIGN INC.
CITY MANAGER: JIMMY L. MORALES
DIRECTOR: ROY COLEY
CITY ENGINEER: NELSON PEREZ-JACOME

L.A. OF RECORD: BRM
DESIGN L.A.: BRM
DRAWN BY: XD
CHECKER: BRM
SCALE: AS NOTED



NO.	DATE	REVISION
B	10/21/21	90% DESIGN RE-SUBMITTAL
A	4/9/21	60% DESIGN RE-SUBMITTAL

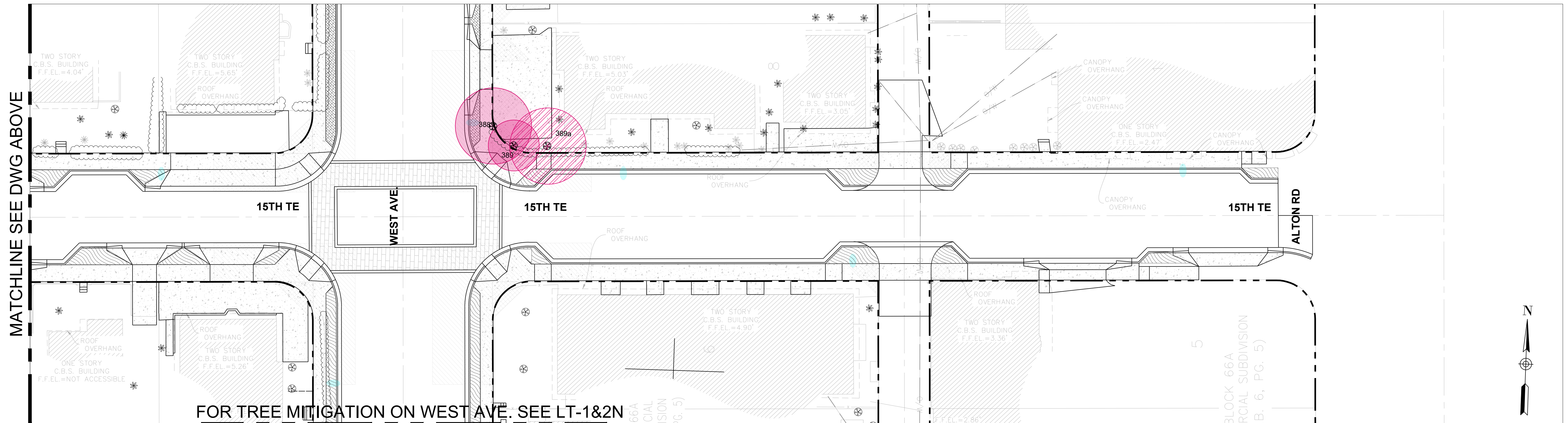
File Name: LT-WEST AVENUE-NORTH- RE 90% CD.dwg
Survey Reference:
Field Book: _____ Page: _____ Work Order: 2016-091-KB
Date: 10/21/21 Sheet: **LT-9N** Drawing: _____



MATCHLINE SEE DWG BELOW

FOR TREE MITIGATION ON BAY RD. SEE LT-3N

15TH TERRACE PLAN

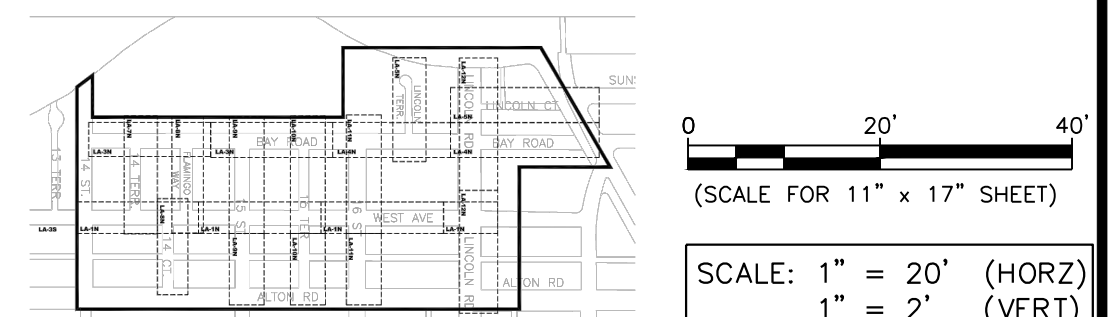


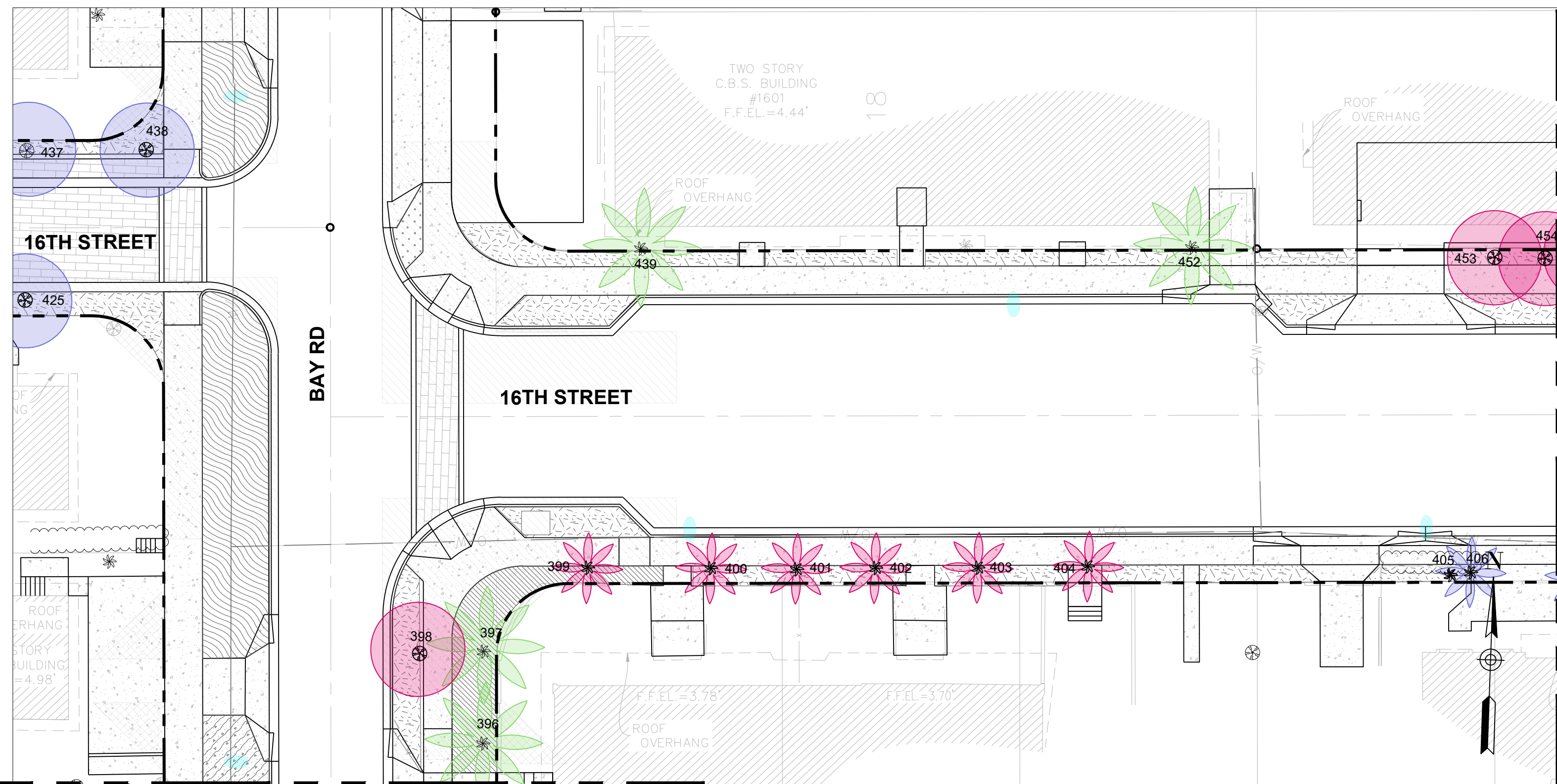
MATCHLINE SEE DWG ABOVE

FOR TREE MITIGATION ON WEST AVE. SEE LT-1&2N

15TH TERRACE PLAN

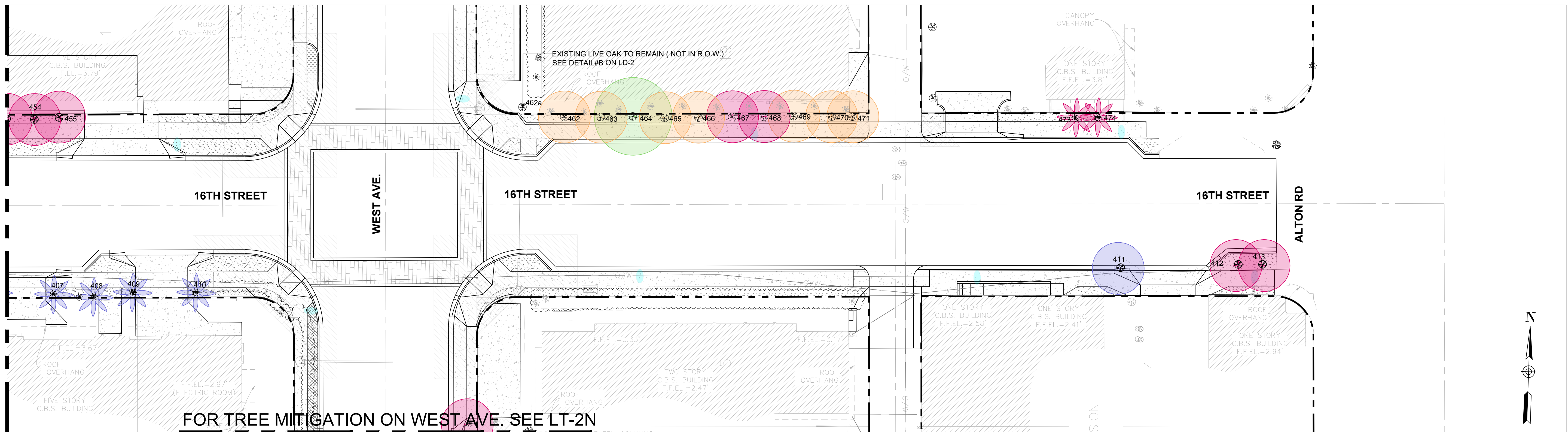
PRESERVED - FIRST PRIORITY (OVER 12" DBH)		PRESERVED - SECOND PRIORITY (7"-11" DBH)		REMOVED & POTENTIAL TRANSPLANT BY OTHERS	
	SPECIMEN TREES RELOCATABLE		LARGE TREES RELOCATABLE		REMOVED TREES NO TRANSPLANT
	SPECIMEN PALMS RELOCATABLE		LARGE PALMS RELOCATABLE		REMOVED PALMS NO TRANSPLANT
	SPECIMEN TREES NON - RELOCATABLE		LARGE TREES NON - RELOCATABLE		REMOVED TREES POTENTIAL TRANSPLANT
	TREES NOT IN R.O.W				REMOVED PALMS POTENTIAL TRANSPLANT





MATCHLINE SEE DWG BELOW

FOR TREE MITIGATION ON WEST AVE. SEE LT-4N 16TH STREET PLAN

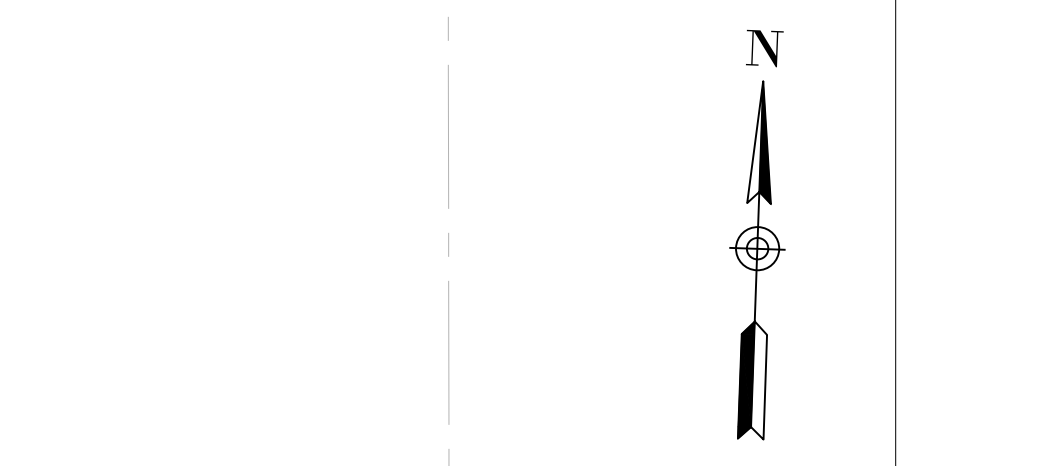


MATCHLINE SEE DWG ABOVE

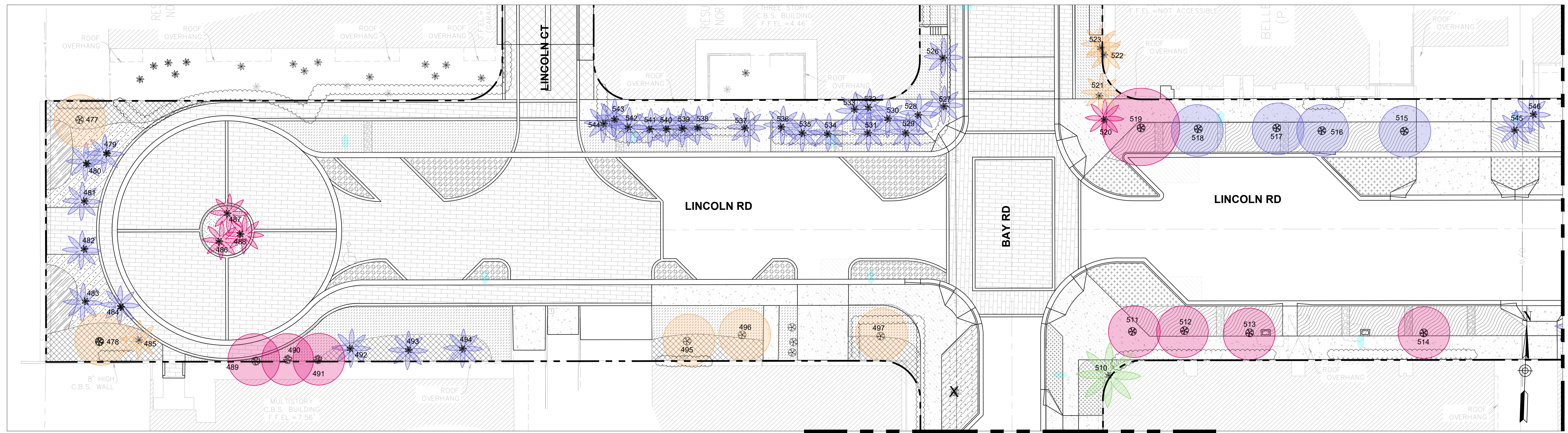
FOR TREE MITIGATION ON WEST AVE. SEE LT-2N

16TH STREET PLAN

PRESERVED - FIRST PRIORITY (OVER 12" DBH)		PRESERVED - SECOND PRIORITY (7"-11" DBH)		REMOVED & POTENTIAL TRANSPLANT BY OTHERS	
	SPECIMEN TREES RELOCATABLE		SPECIMEN PALMS RELOCATABLE		REMOVED TREES NO TRANSPLANT
	SPECIMEN TREES NON - RELOCATABLE		TREES NOT IN R.O.W		LARGE TREES NON - RELOCATABLE
			LARGE PALMS RELOCATABLE		REMOVED PALMS NO TRANSPLANT
			REMOVED TREES POTENTIAL TRANSPLANT		REMOVED PALMS POTENTIAL TRANSPLANT

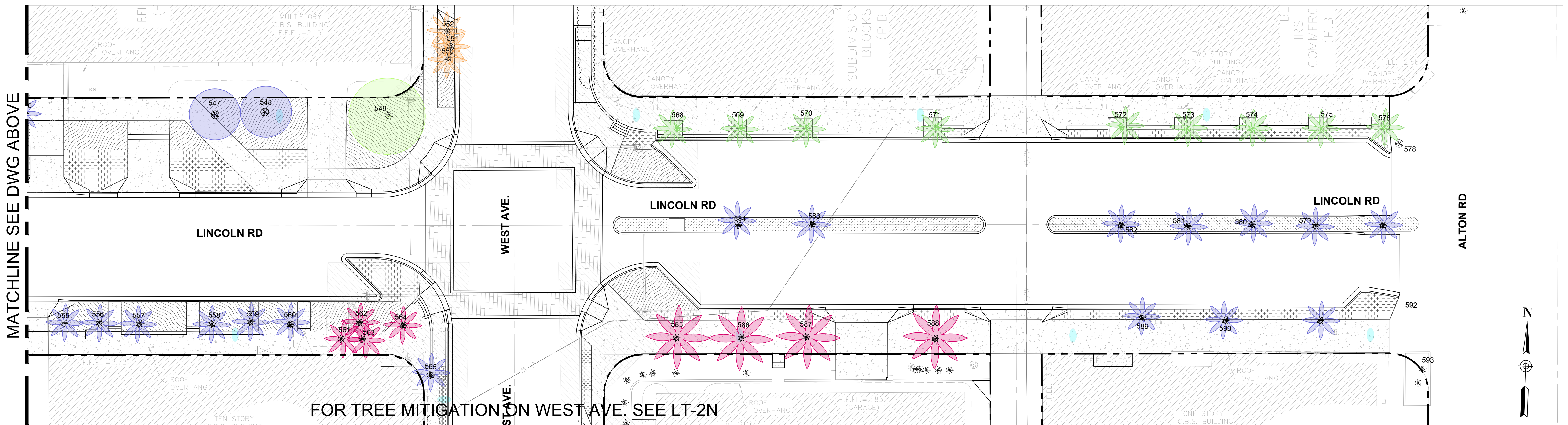


NO.	DATE	REVISION
B	10/21/21	90% DESIGN RE-SUBMITTAL
A	4/9/21	60% DESIGN RE-SUBMITTAL



LINCOLN ROAD PLAN FOR TREE MITIGATION ON BAY RD. SEE LT-4N

MATCHLINE SEE DWG BELOW

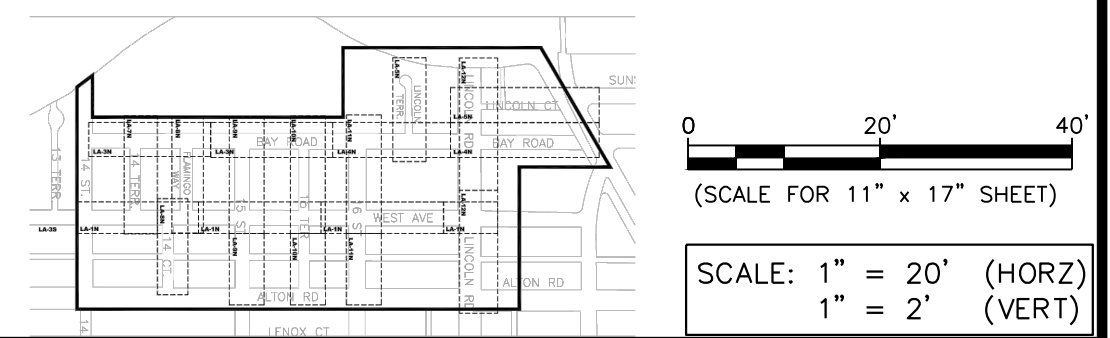


MATCHLINE SEE DWG ABOVE

FOR TREE MITIGATION ON WEST AVE. SEE LT-2N

LINCOLN ROAD PLAN

PRESERVED - FIRST PRIORITY (OVER 12" DBH)		PRESERVED - SECOND PRIORITY (7"-11" DBH)		REMOVED & POTENTIAL TRANSPLANT BY OTHERS	
	SPECIMEN TREES RELOCATABLE		LARGE TREES RELOCATABLE		REMOVED TREES NO TRANSPLANT
	SPECIMEN PALMS RELOCATABLE		LARGE PALMS RELOCATABLE		REMOVED PALMS NO TRANSPLANT
	SPECIMEN TREES NON - RELOCATABLE		LARGE TREES NON - RELOCATABLE		REMOVED TREES POTENTIAL TRANSPLANT
	TREES NOT IN R.O.W				REMOVED PALMS POTENTIAL TRANSPLANT

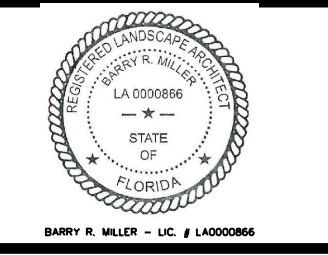


MIAMI BEACH
PUBLIC WORKS DEPARTMENT
1700 CONVENTION CENTER DRIVE, MIAMI BEACH, FL 33139

NEIGHBORHOOD: **2016 - 091-KB WEST AVE PHASE II IMPROVEMENTS NORTH OF 14TH STREET**
TITLE: **TREE MITIGATION PLAN**

savinomiller DESIGN ARCHITECTS
CITY MANAGER: JIMMY L. MORALES
DIRECTOR: ROY COLEY
CITY ENGINEER: NELSON PEREZ-JACOME

L.A. OF RECORD: BRM
DESIGN L.A.: BRM
DRAWN BY: XD
CHECKER: BRM
SCALE: AS NOTED



NO.	DATE	REVISION
B	10/21/21	90% DESIGN RE-SUBMITTAL
A	4/9/21	60% DESIGN RE-SUBMITTAL

File Name: LT-WEST AVENUE-NORTH- RE 90% CD.dwg
Survey Reference:
Field Book: _____ Page: _____ Work Order: 2016-091-KB
Date: 10/21/21 Sheet: **LT-12N** Drawing: _____

