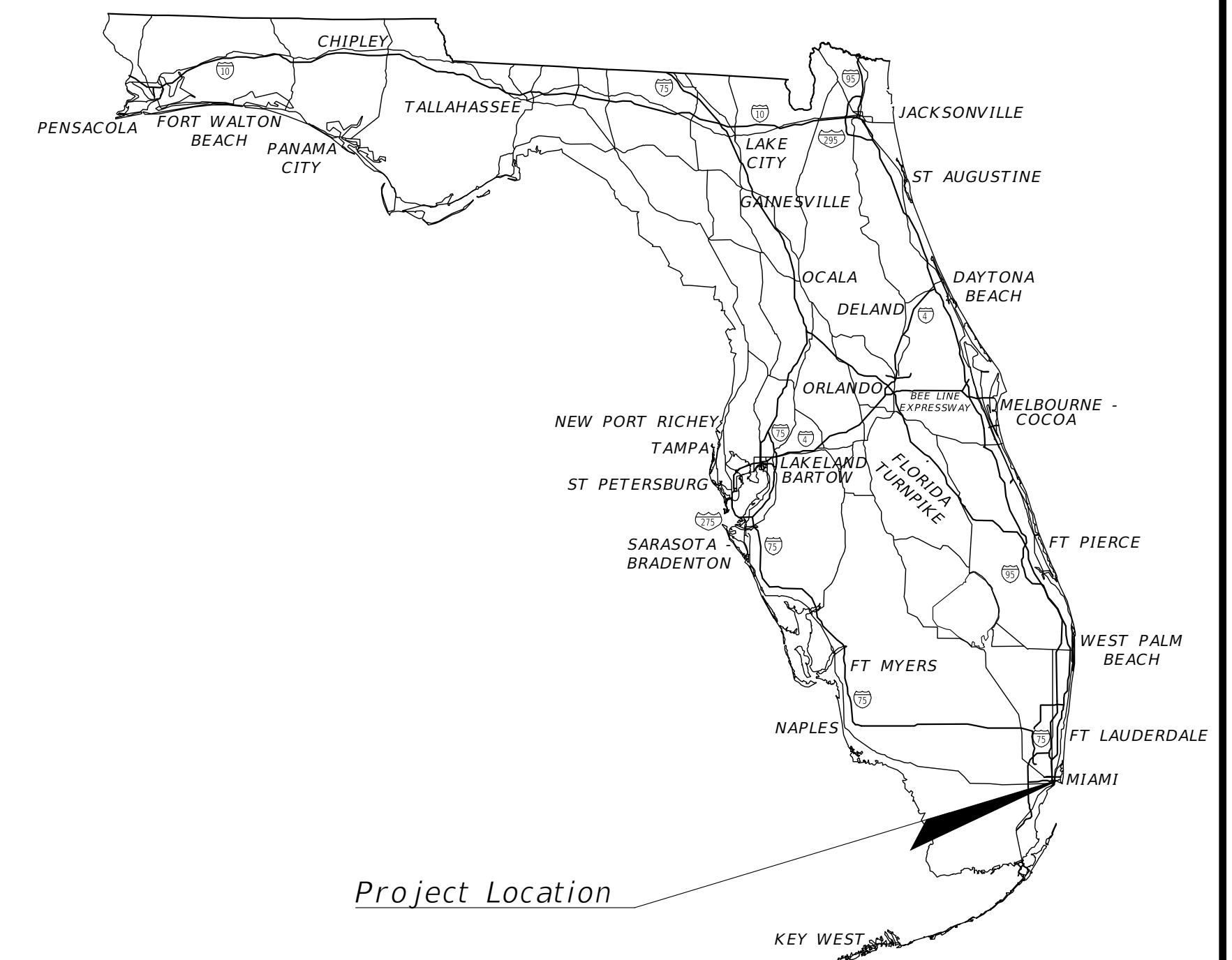
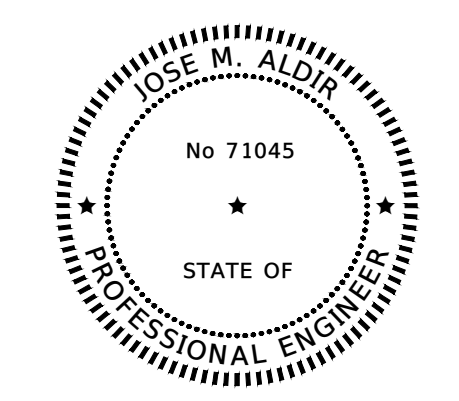


SIGNALIZATION PLANS



INDEX OF SIGNALIZATION PLANS

<u>SHEET NO.</u>	<u>SHEET DESCRIPTION</u>
T-1	KEY SHEET
T-2	TABULATION OF QUANTITIES
T-3 - T-5	SIGNALIZATION PLAN
T-6	STANDARD MAST ARM ASSEMBLIES DATA TABLE
T-7	MAST ARM TABULATION
T-8	ELECTRICAL POWER / SERVICE DETAIL
T-9	CONTROLLER CABINET INSTALLATION DETAIL
T-10	SIGNAL DETAILS



THIS ITEM HAS BEEN DIGITALLY SIGNED AND SEALED BY JOSE M. ALDIR, P.E. ON THE DATE ADJACENT TO THE SEAL.

PRINTED COPIES OF THIS DOCUMENT ARE NOT CONSIDERED SIGNED AND SEALED AND THE SIGNATURE MUST BE VERIFIED ON ANY ELECTRONIC COPIES.

SIGNALIZATION PLANS
ENGINEER OF RECORD:

JOSE ALDIR, P.E.
P.E. NO.: 71045
CIVIL WORKS, INC.
8491 NW 17 STREET, SUITE 108
DORAL FL 33126
CERTIFICATE OF AUTHORIZATION NO.: 07528

PERMIT SET

T-1



NEIGHBORHOOD: **2016 - 090-KB WEST AVE PHASE II IMPROVEMENTS SOUTH OF 14TH STREET**
TITLE: **KEY SHEET**



CITY MANAGER: ALINA T. HUDAK.
DIRECTOR: ERIC T. CARPENTER.
CITY ENGINEER: NELSON PEREZ-JACOME.

ENG. OF RECORD: JMA
DESIGN ENGINEER: SH
DRAWN BY: MA
CHECKER: SH
SCALE: AS NOTED

ENGINEER OF RECORD:
JOSE M. ALDIR
71045
FL REG No.

NO	DATE	REVISION
	09/27/21	REVISED SET
	09/30/19	PERMIT SET
A	7/23/19	60% DESIGN SUBMITTAL

File Name: KEYSSG05.dwg
Survey Reference:
Field Book: _____ Page: _____ Work Order: 2016-090-KB
Date: 09/27/21 Sheet: **T-1** Drawing: **KEYSSG05**

\\COMPUTER-15\Projects\Server17\Projects\17105 - West Ave South Working Directory\KEYSSG05.dwg

TABULATION OF QUANTITIES

PAY ITEM NO.	DESCRIPTION	UNIT	SHEET NUMBERS												TOTAL THIS SHEET	GRAND TOTAL	REF. SHT	
			T-3		T-4		T-5											
			PLAN	FINAL	PLAN	FINAL	PLAN	FINAL										
630-2-12	CONDUIT(F&I)(DIRECTIONAL BORE)UNDERGROUND OR UNDERPAVEMENT (PVC)	LF	1055		790		180									2025	2025	
632-7-1	CABLE(SIGNAL)	PI	1		1											2	2	
632-7-6	SIGNAL CABLE (REMOVE)	PI	1		1											2	2	
635-2-11	PULL BOXES(F&I)(13" X 24" COVERSIZ)	EA	24		22		6									52	52	
635-2-12	PULL BOXES(F&I)(24"X 36" COVER SIZE)	EA	1		1											2	2	
639-1-112	ELECTRICAL POWER SERVICE(F&I)(OVERHEAD)(METER BY CONTRACTOR)	AS	1		1											2	2	
639-2-1	ELECTRICAL SERVICE WIRE(F&I)	LF	390		50											440	440	
639-2-6	ELECTRICAL SERVICE WIRE(REMOVE)	LF	100		370											470	470	
639-3-60	ELECTRICAL SERVICE DISCONNECT(REMOVE)	EA	1		1											2	2	
641-2-12	SERVICE POLE TYPE P-11	EA	1		1											2	2	
646-1-11	ALUMINUM SIGNAL POLE, PEDESTAL	EA	3		4											7	7	
646-1-60	ALUMINUM SIGNAL POLE, PEDESTAL REMOVE	EA	1		2											3	3	
649-21-1	STEEL MAST ARM ASSEMBLY, F&I, 30'	EA	1													1	1	
649-21-3	STEEL MAST ARM ASSEMBLY, F&I, 40'	EA	2		2											4	4	
649-21-15	STEEL MAST ARM ASSEMBLY, F&I, 70'	EA			1											1	1	
649-26-3	MAST ARM, REMOVE, SHALLOW, BOLT ON ATTACHMENT	EA	3		2											5	5	
650-1-14	TRAFFIC SIGNAL, 12" STD. (3 SECT 1 WAY)	AS	5		6											11	11	
650-1-16	TRAFFIC SIGNAL, 12" STD. (4 SECT 1 WAY)	AS	1													1	1	
653-1-11	PEDESTRIAN SIGNAL (F&I)(LED-COUNTDOWN)(1-WAY)	AS	2		4											6	6	
653-1-12	PEDESTRIAN SIGNAL (F&I)(LED-COUNTDOWN)(2-WAY)	AS	1													1	1	
654-2-22	MIDBLOCK CROSSWALK: RECTANGULAR RAPID FLASHING BEACON, (F&I) SOLAR	AS					6									6	6	
660-1-109	LOOP DETECTOR INDUCTIVE, F&I, TYPE 9	EA	5		4											9	9	
660-2-106	LOOP ASSEMBLY, F&I, TYPE F	EA	7		6											13	13	
665-1-11	PEDESTRIAN DETECTOR(F&I)(STANDARD)	EA	4		4											8	8	
670-5-120	TRAFFIC CONTROLLER ASSEMBLY(F&I)(170)	AS	1		1											2	2	
670-5-600	TRAFFIC CONTROLLER ASSEMBLY, REMOVE	AS	1		1											2	2	
685-161	SYSTEM AUXILIARIES, F&I, ROUTER (DIGI TRANSPORT WR21 OR WR44 ROUTER)	EA	1		1											2	2	
700-5-22	INTERNALLY ILLUMINATED SIGN(LED), F&I, 12-18 SF	EA	3		3											6	6	

* NEW 180 MPH WINDLOAD REQUIRMENTS.
 USE FDOT MAST ARM ASSEMBLIES.
 USE FOUNDATIONS PER LANGAN ENGINEERING MAST ARM FOUNDATION DETAILS.
 SIGNAL POLES TO BE PAINTED BLACK.

CONTACT AT&T AND FP&L 3 MONTHS PRIOR TO SERVICE POINT CONNECTION FOR COORDINATION OF CONNECTION REQUIREMENTS.

PERMIT SET

T-2



NEIGHBORHOOD: **2016 - 090-KB WEST AVE PHASE II IMPROVEMENTS SOUTH OF 14TH STREET**
 TITLE: **TABULATION OF SIGNAL QUANTITIES**

CWI
 Civil Works, Inc.
 Consulting Engineers CA 07523
 8491 N.W. 17th Street, Suite 108
 Doral, FL 33126 (305)991-4323

CITY MANAGER: ALINA T. HUDAK.
 DIRECTOR: ERIC T. CARPENTER.
 CITY ENGINEER: NELSON PEREZ-JACOME.

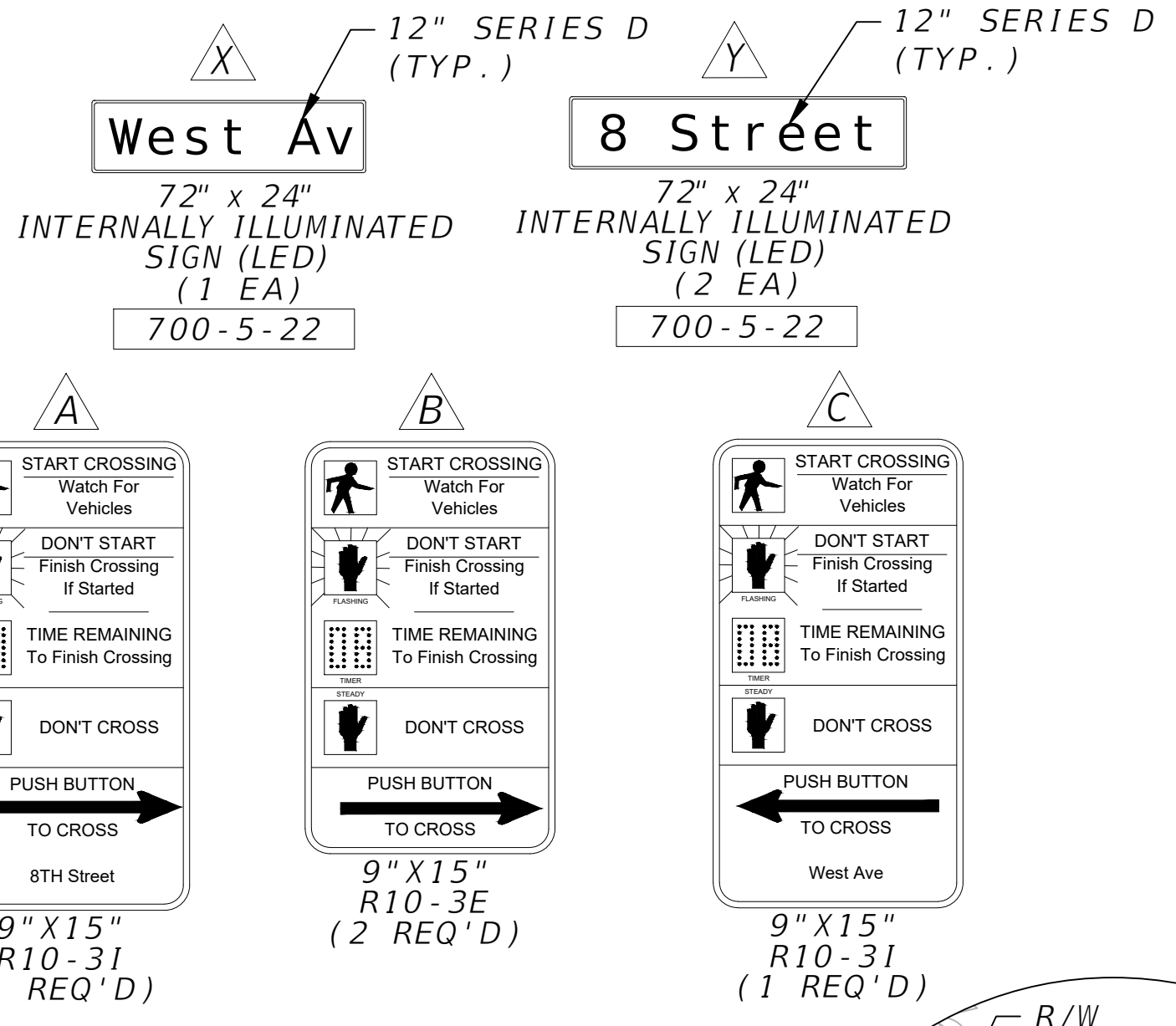
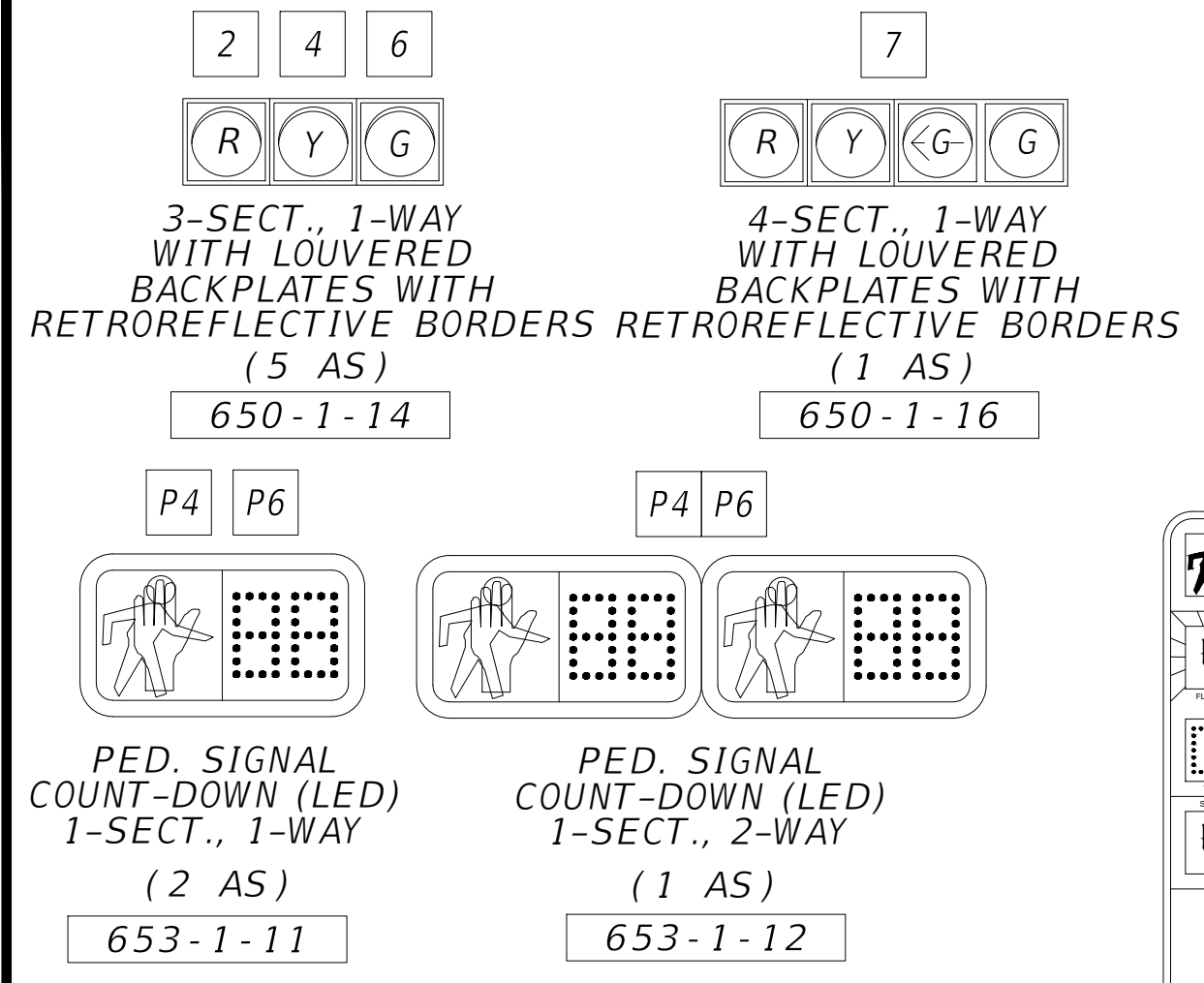
ENG. OF RECORD: JMA
 DESIGN ENGINEER: SH
 DRAWN BY: MA
 CHECKER: SH
 SCALE: AS NOTED

ENGINEER OF RECORD:
 JOSE M. ALDIR
 FL REG No. 71045

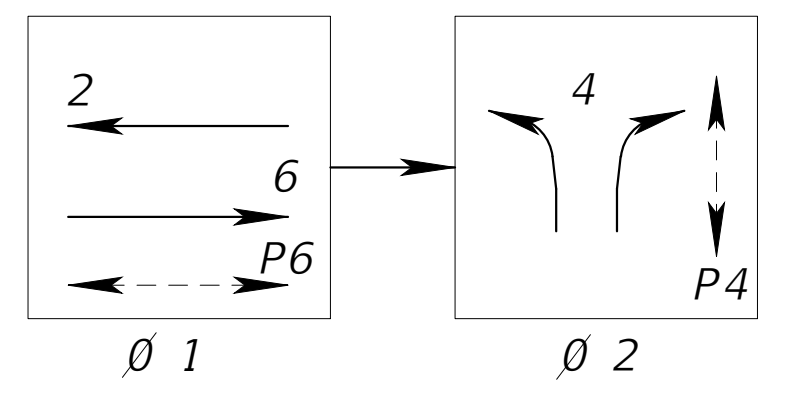
NO.	DATE	REVISION
	09/27/21	REVISED SET
	09/30/19	PERMIT SET
A	8/14/19	60% DESIGN SUBMITTAL

File Name: TABQS05.dwg
 Survey Reference:
 Field Book: _____ Page: _____ Work Order: 2016-090-KB
 Date: 09/27/21 Sheet: **T-2** Drawing: **TABQS05**

\\COMPUTER-15\Projects\Server17\Projects\17105 - West Ave South Working Directory\TABQS05.dwg



SIGNAL OPERATING PLAN

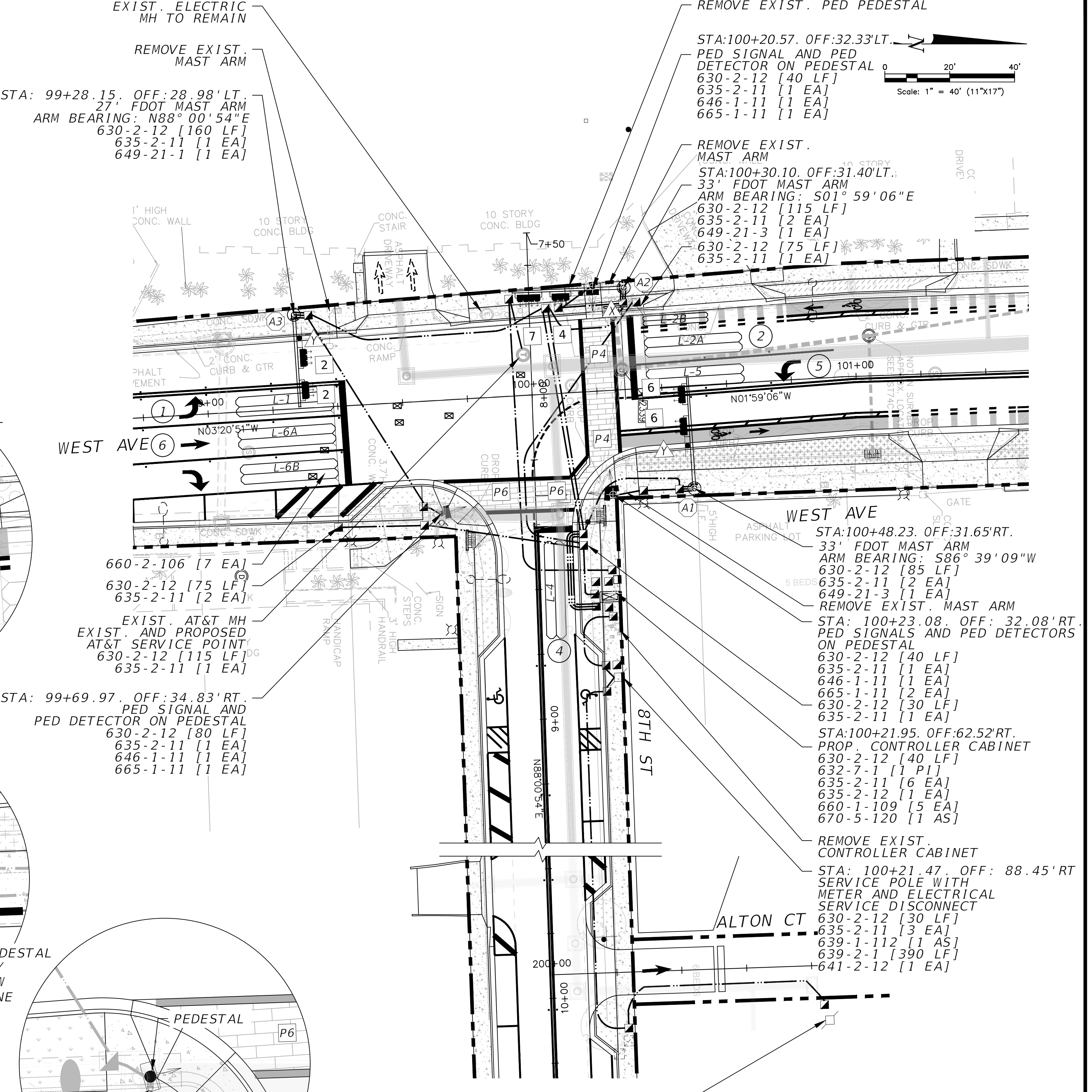
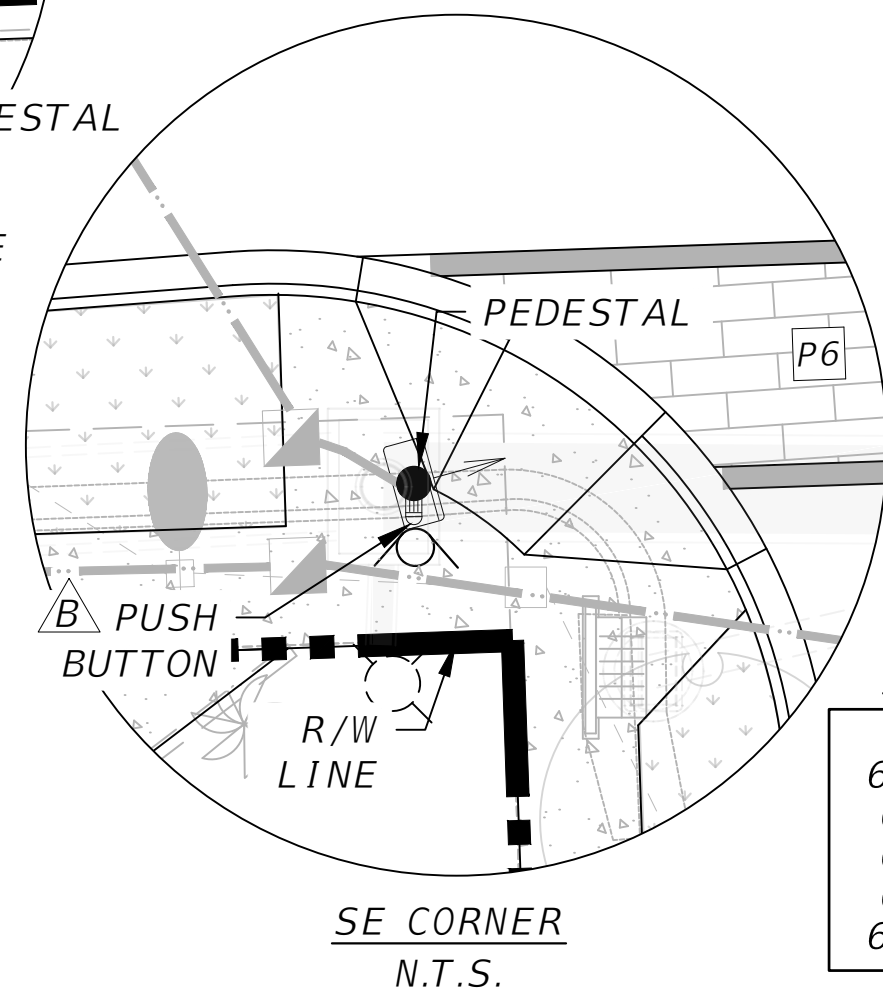
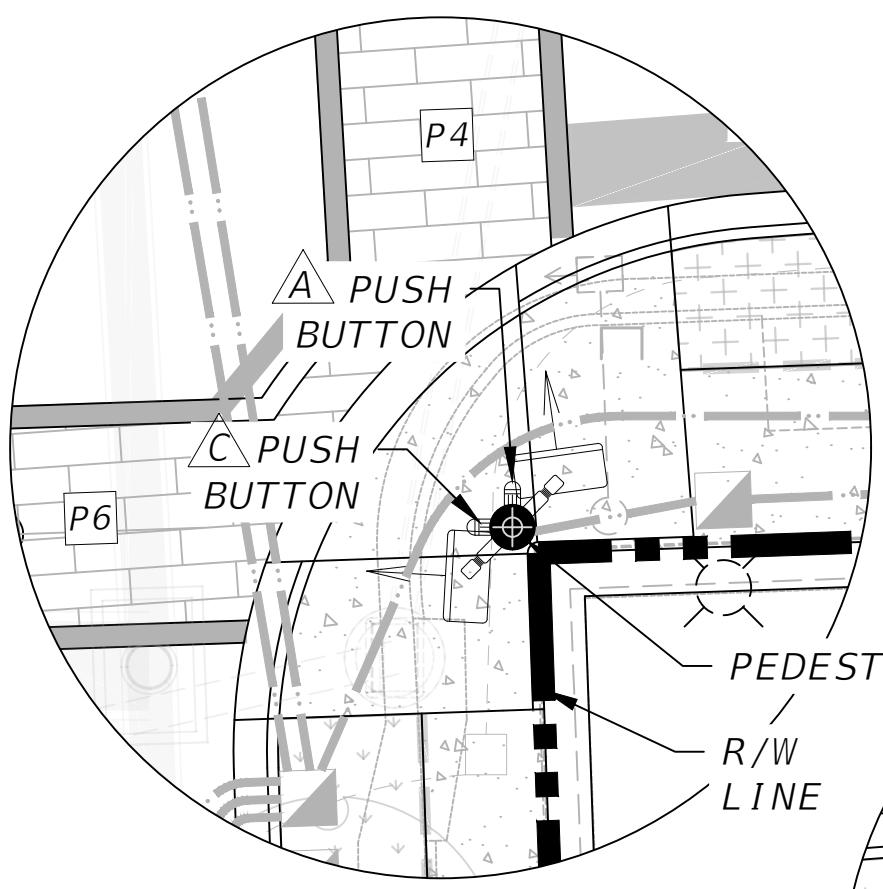
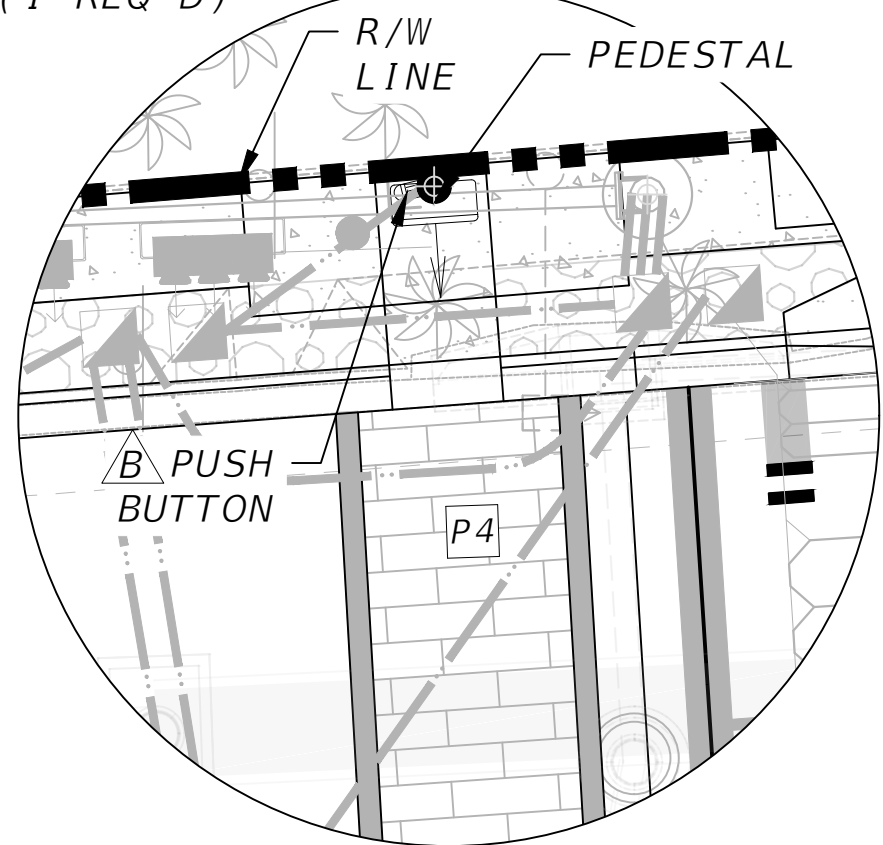


MVM'T No.	NO. OF LOOPS	NO. OF DETS.
1	1	1
2A	1	1
2B	1	1
4	1	1
5	1	1
6A	1	1
6B	1	1

VEHICLE MOVEMENT	1	2	3	4	5	6	7	8
APPROACH DIRECTION	NBL	SBT	-	WBT	SBL	NBT	-	-
APP. VEH. SPEED (MPH)	25	25	-	25	25	25	-	-
ALL RED DIST. (FEET)	30	50	-	80	55	75	-	-
YELLOW CLEARANCE	3.4	3.4	-	3.4	3.4	3.4	-	-
ALL RED	2.0	2.0	-	2.7	2.0	2.6	-	-
PEDESTRIAN MOVEMENT	-	-	-	P4	-	P6	-	-
PED. CROSSING DIST. (FEET)	-	-	-	50	-	40	-	-
PED. WALK	-	-	-	7	-	7	-	-
PED. FLASHING DONT WALK	-	-	-	15	-	12	-	-

CONTROLLER OPERATIONS:

1. MAJOR STREET: WEST AVENUE
MINOR STREET: 8 STREET
2. THE INTERSECTION WILL CONTINUE TO OPERATE ON THE EXISTING SIGNAL OPERATING PLAN AS SHOWN ABOVE. CONCURRENT PED PHASE IS SHOWN.
3. FLASHING OPERATION: YELLOW FOR WEST AVENUE
RED FOR 8 STREET
4. ALL PHASES ARE ACTUATED.
5. CONTROLLER TIMING TO BE PROVIDED BY MIAMI-DADE COUNTY TRAFFIC SIGNALS AND SIGNS DIVISION (THE MAINTAINING AGENCY.)
6. CONTROLLER SHALL BE WIRED FOR A DUAL PEDESTRIAN MODE OPERATION (CONCURRENT AND EXCLUSIVE) TO ALLOW FOR FUTURE EXCLUSIVE PED PHASE OPERATION.



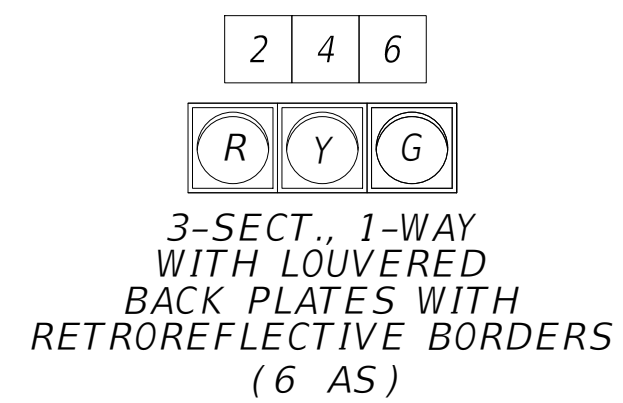
- REMOVAL ITEMS
- 632-7-6 [1 PI]
 - 639-2-6 [100 LF]
 - 639-3-60 [1 EA]
 - 646-1-60 [1 EA]
 - 649-26-3 [3 EA]
 - 670-5-600 [1 AS]

PROPOSED TREES SHOWN FOR COORDINATION ONLY.

WEST AVE AND 8 ST INTERSECTION ID NO. 6014

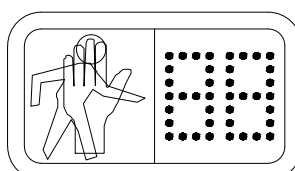
PERMIT SET

T-3



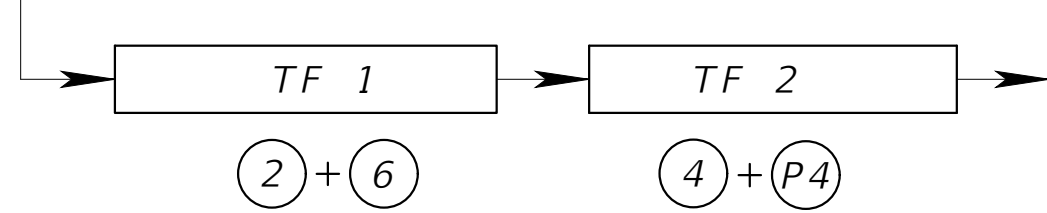
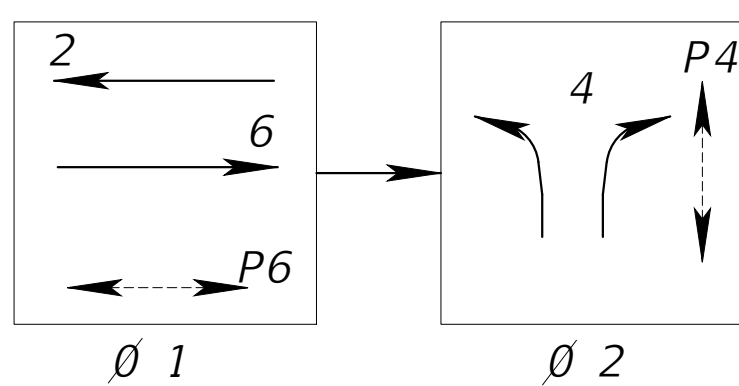
650-1-14

P4 P6



653-1-11

SIGNAL OPERATING PLAN

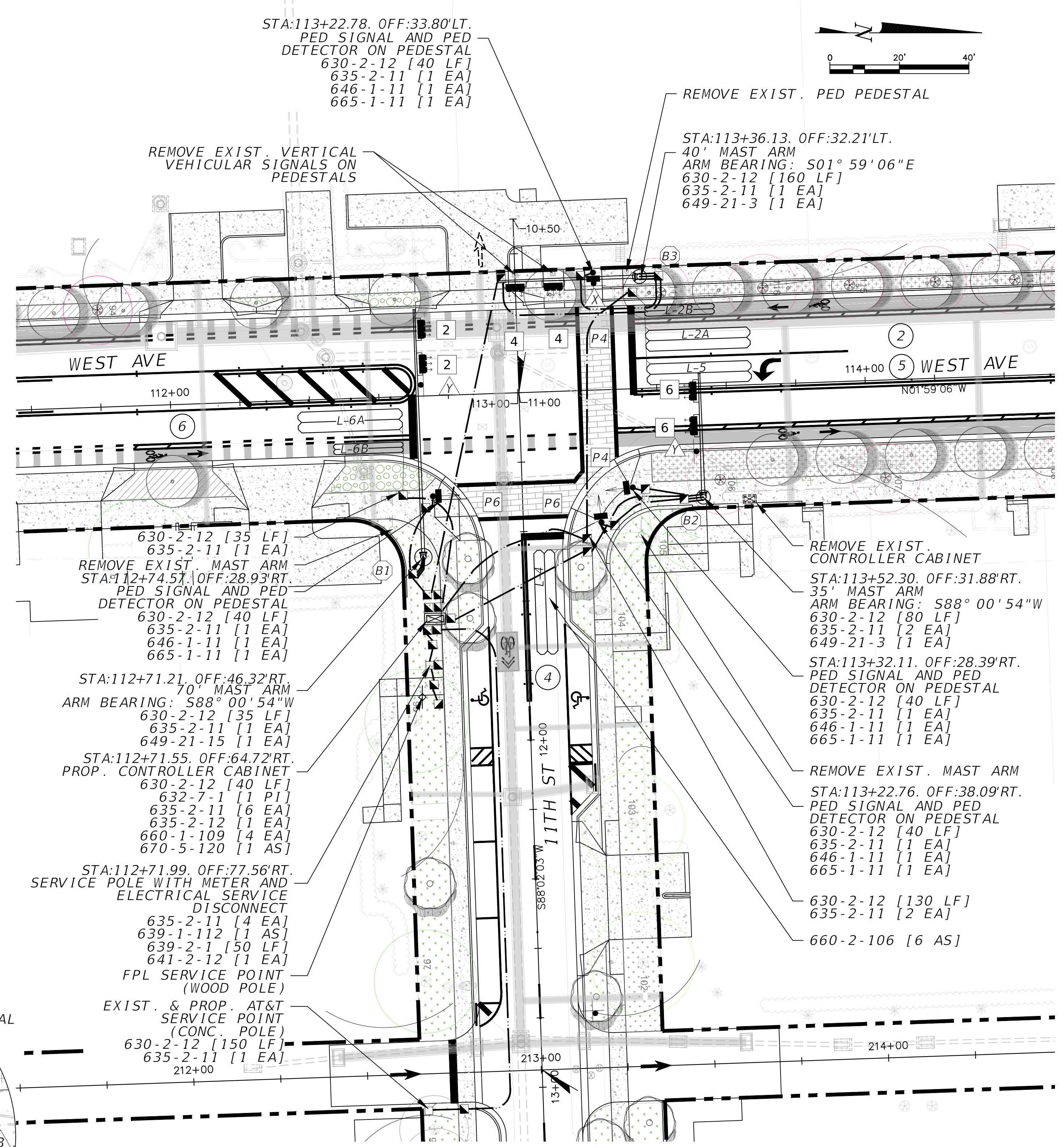
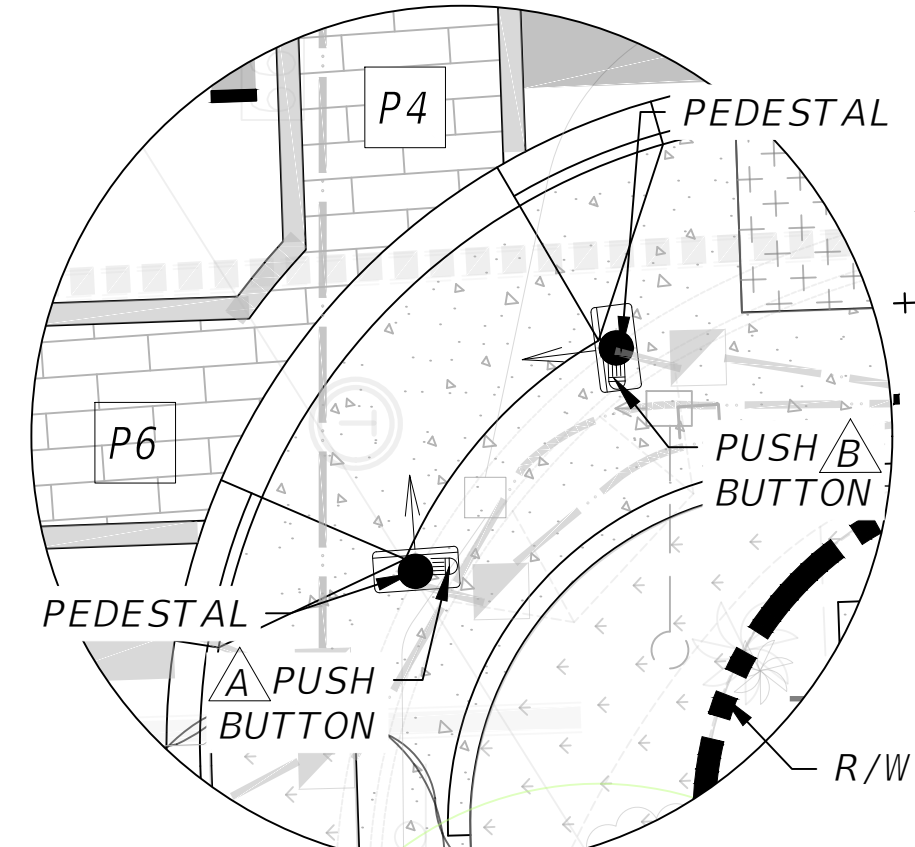
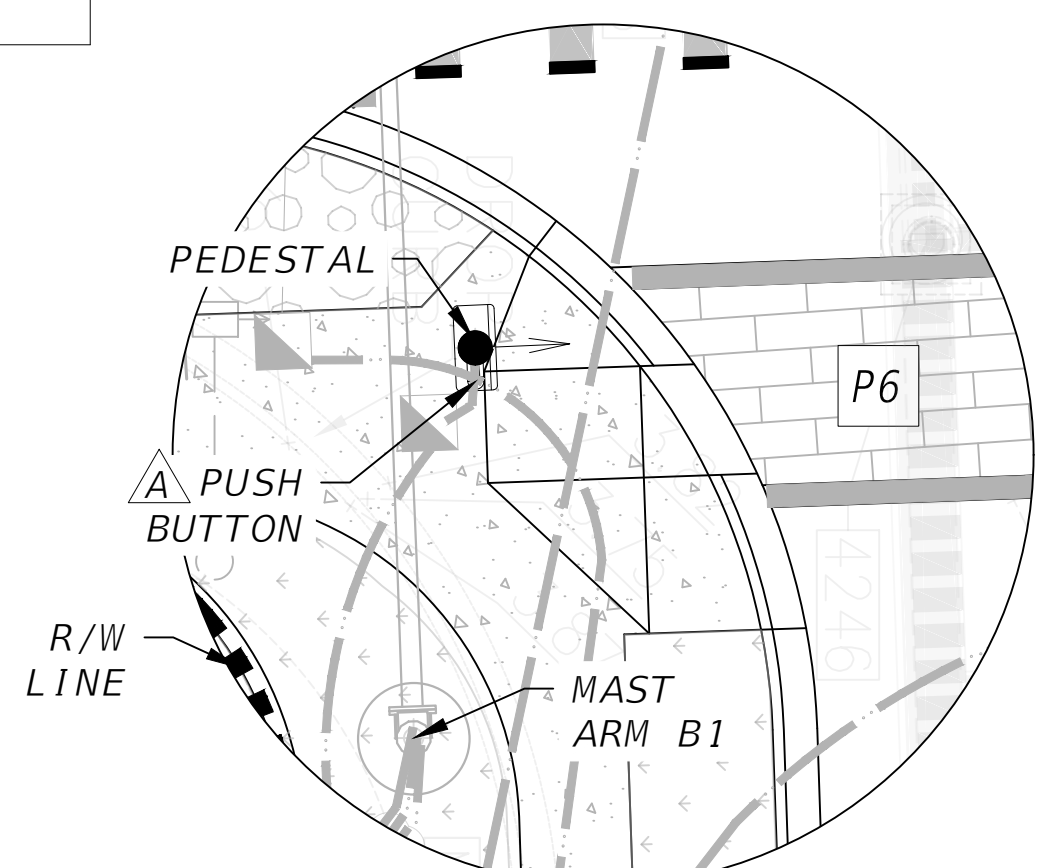
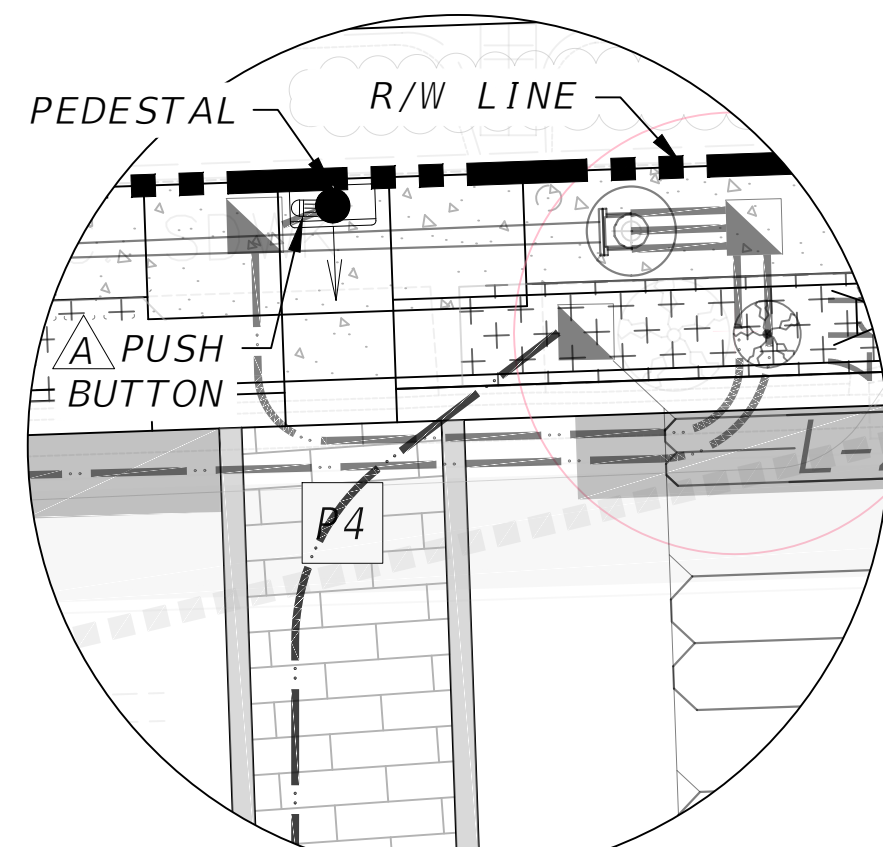
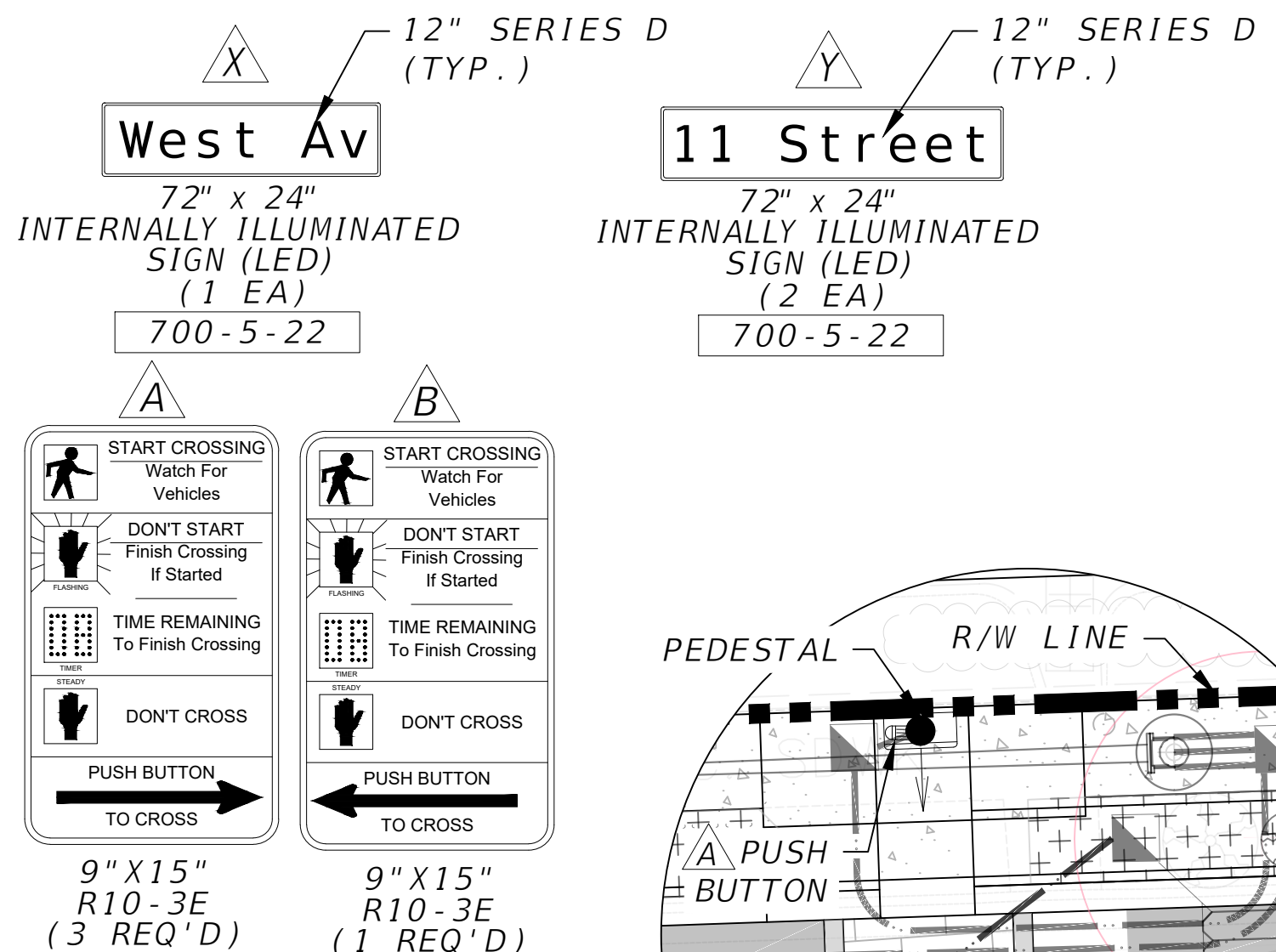


MVM'T No.	NO. OF LOOPS	NO. OF DETS.
2A	1	1
2B	1	
4	1	1
5	1	1
6A	1	1
6B	1	

VEHICLE MOVEMENT	1	2	3	4	5	6	7	8
APPROACH DIRECTION	-	SBT	-	WBT	SBL	NBT	-	-
APP. VEH. SPEED (MPH)	-	25	-	25	25	25	-	-
ALL RED DIST. (FEET)	-	50	-	60	60	50	-	-
YELLOW CLEARANCE	-	3.4	-	3.4	3.4	3.4	-	-
ALL RED	-	2.0	-	2.2	2.2	2.0	-	-
PEDESTRIAN MOVEMENT	-	-	-	P4	-	P6	-	-
PED. CROSSING DIST. (FEET)	-	-	-	55	-	40	-	-
PED. WALK	-	-	-	7	-	7	-	-
PED. FLASHING DON'T WALK	-	-	-	16	-	12	-	-

CONTROLLER OPERATIONS:

- MAJOR STREET: WEST AVENUE
MINOR STREET: 11 STREET
- THE INTERSECTION WILL CONTINUE TO OPERATE ON THE EXISTING SIGNAL OPERATING PLAN AS SHOWN ABOVE. CONCURRENT PED PHASE IS SHOWN.
- FLASHING OPERATION: YELLOW FOR WEST AVENUE
RED FOR 11 STREET
- ALL PHASES ARE ACTUATED.
- CONTROLLER TIMING TO BE PROVIDED BY MIAMI-DADE COUNTY TRAFFIC SIGNALS AND SIGNS DIVISION (THE MAINTAINING AGENCY).
- CONTROLLER SHALL BE WIRED FOR A DUAL PEDESTRIAN MODE OPERATION (CONCURRENT AND EXCLUSIVE) TO ALLOW FOR FUTURE EXCLUSIVE PED PHASE OPERATION.

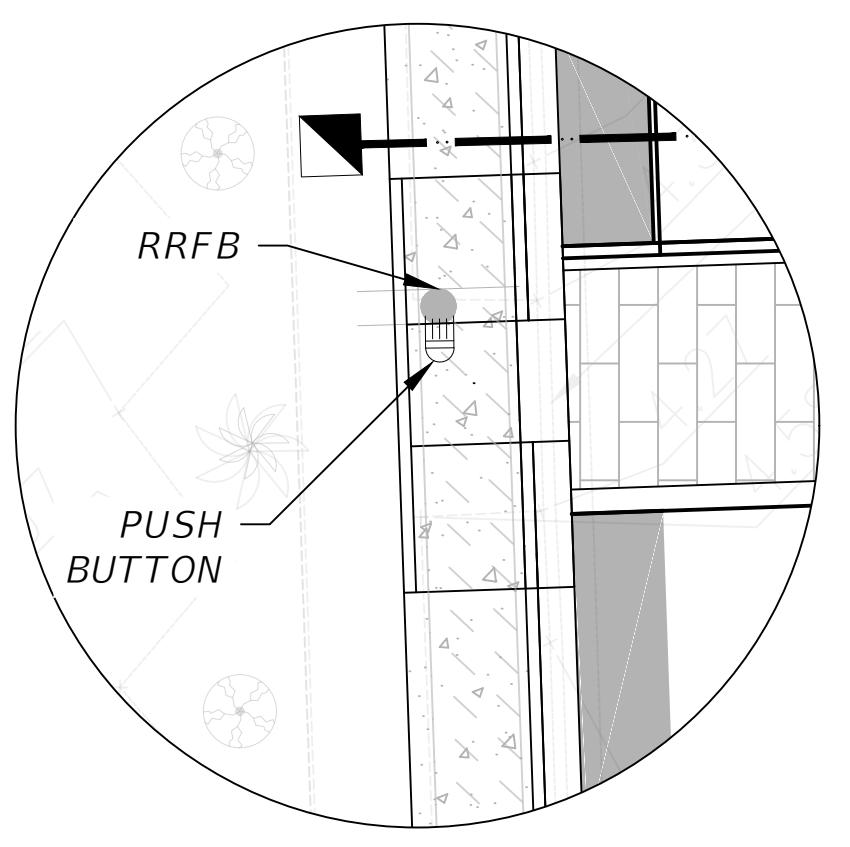


- REMOVAL ITEMS
- 632-7-6 [1 PI]
 - 639-2-6 [370 LF]
 - 639-3-60 [1 EA]
 - 646-1-60 [2 EA]
 - 649-26-3 [2 EA]
 - 670-5-600 [1 AS]

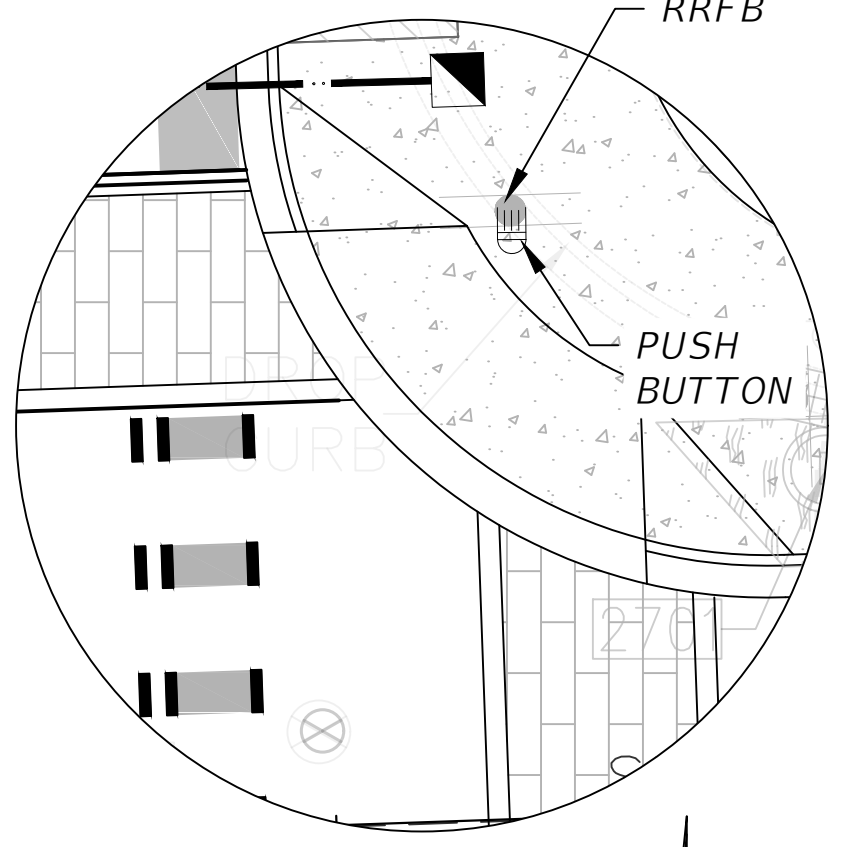
PROPOSED TREES SHOWN FOR COORDINATION ONLY.

WEST AVE AND 11 ST INTERSECTION ID NO. 6470

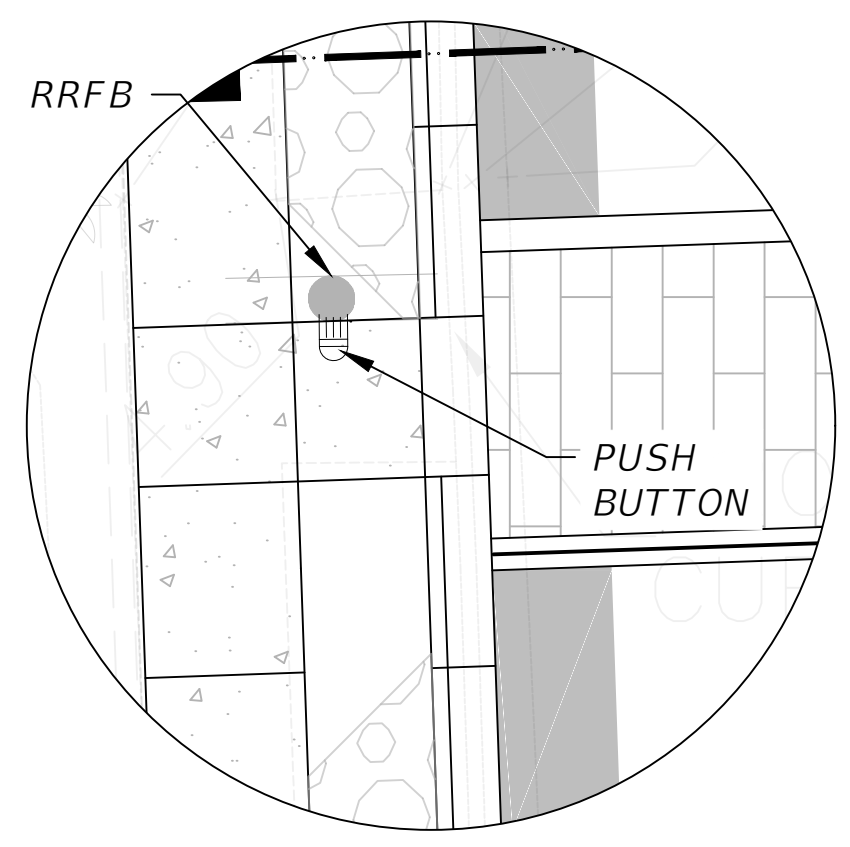
PERMIT SET T-4



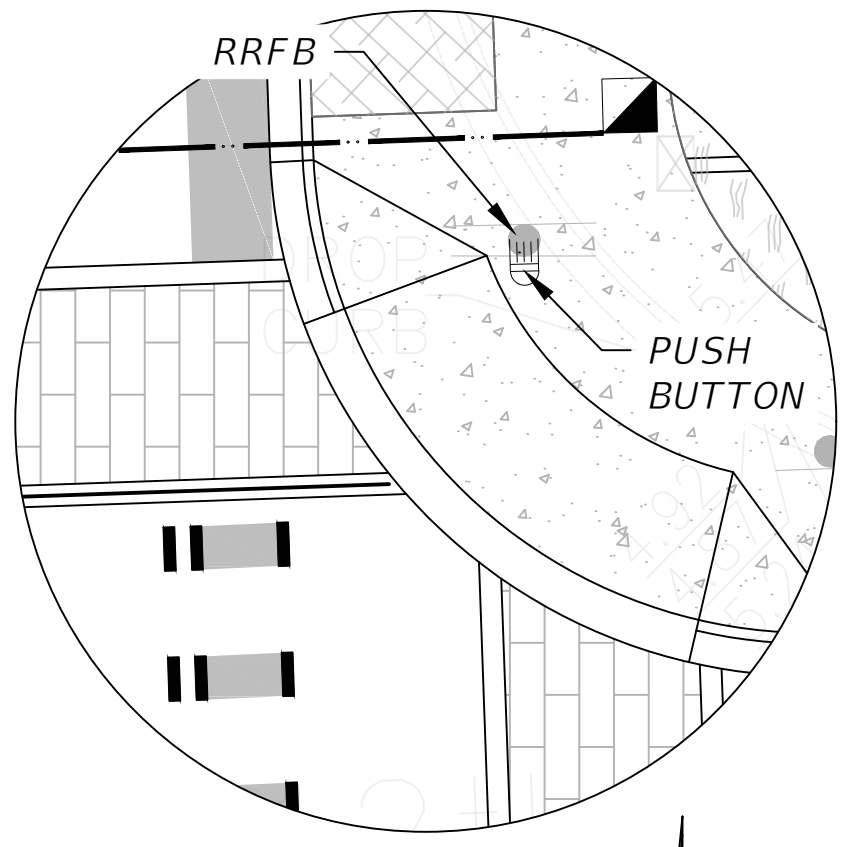
NW CORNER
N.T.S.



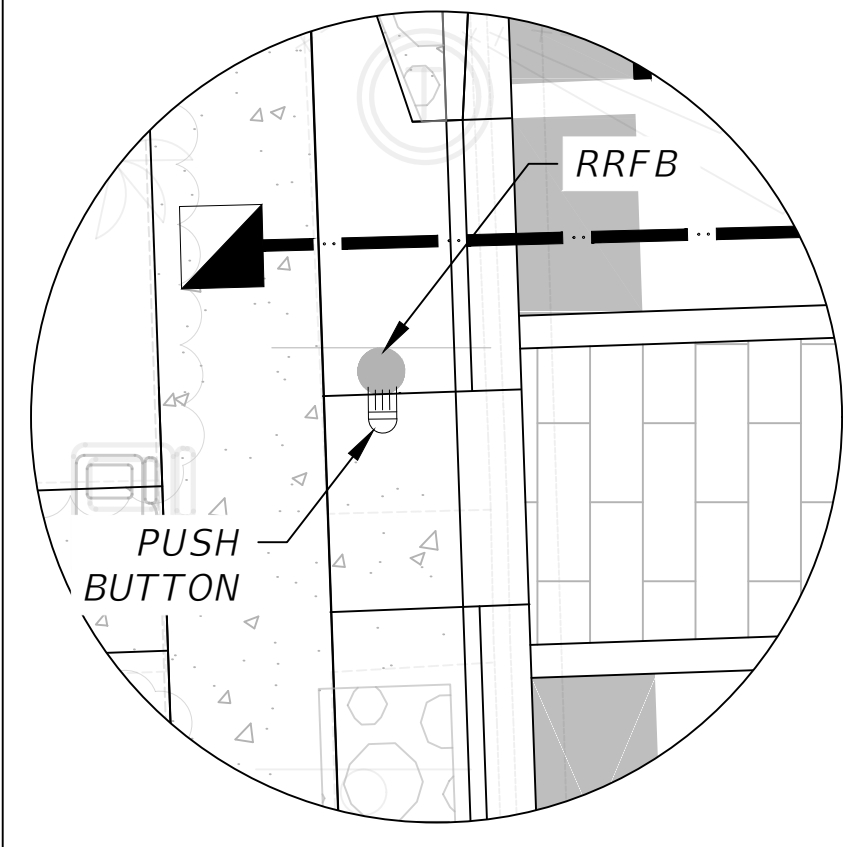
NE CORNER
N.T.S.



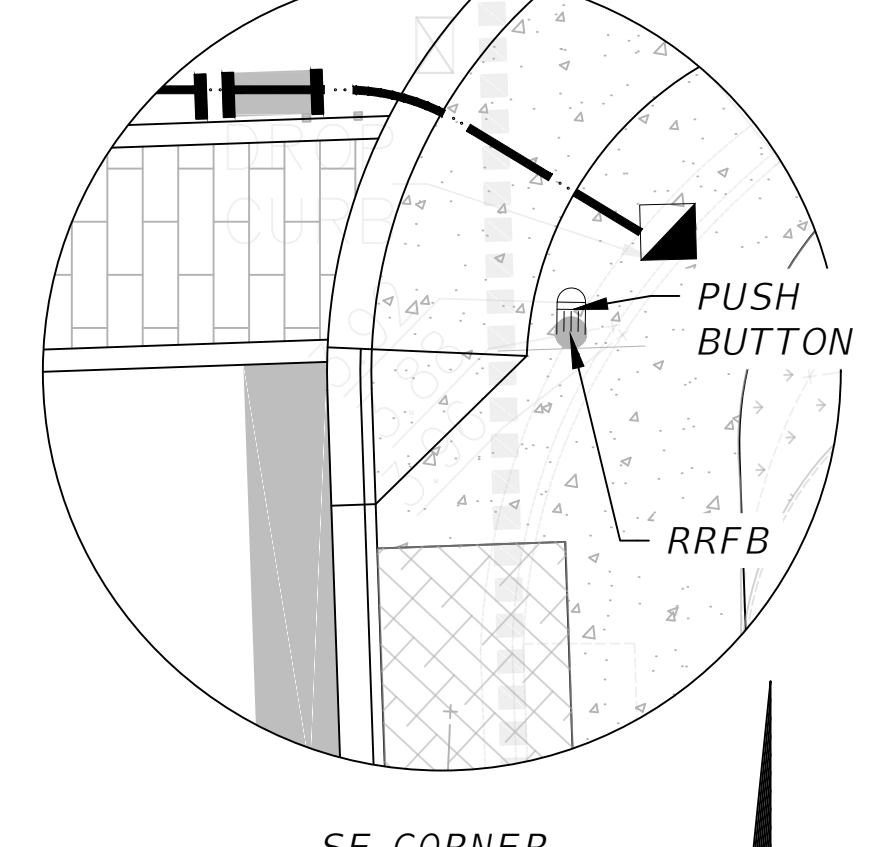
NW CORNER
N.T.S.



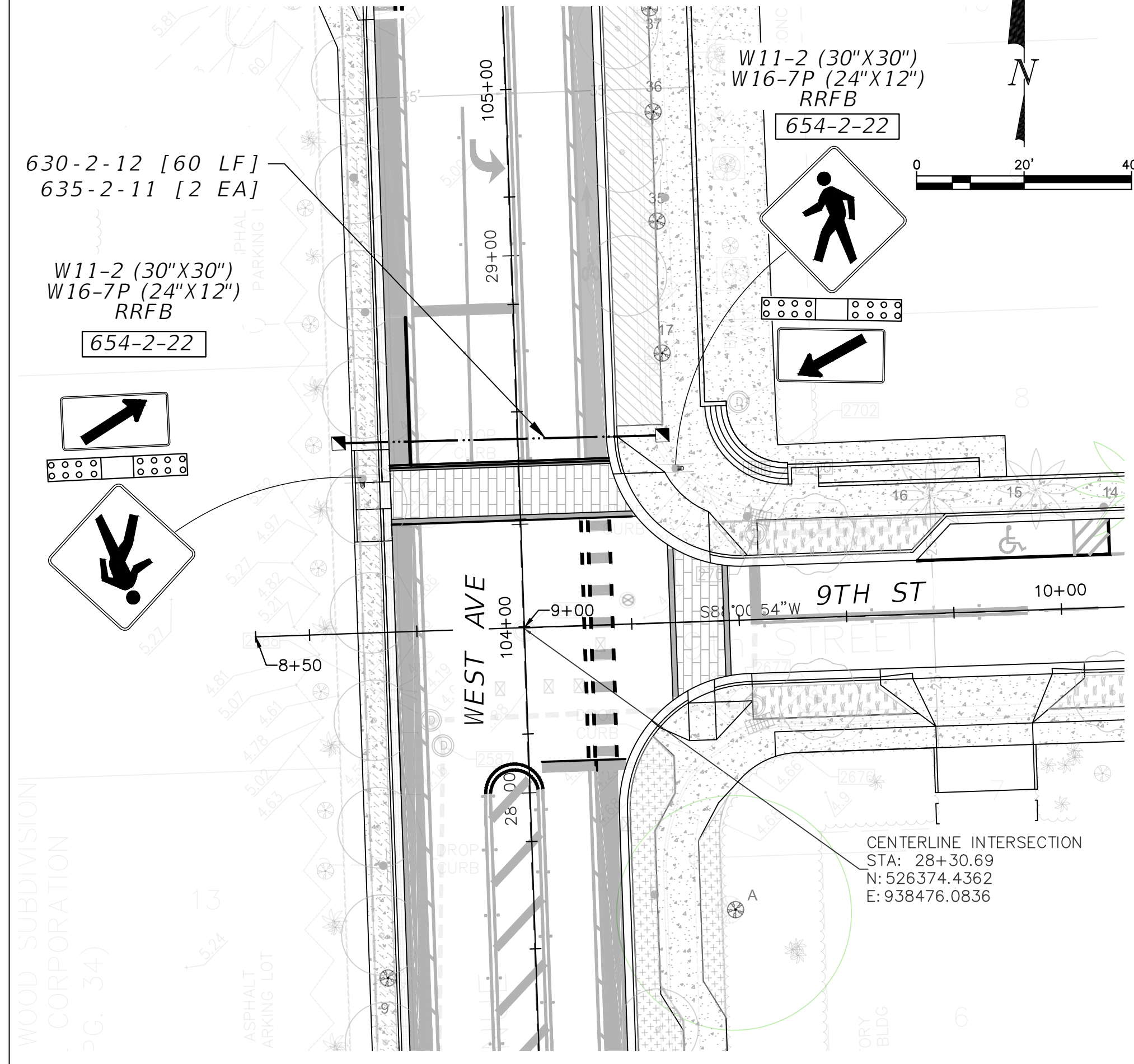
NE CORNER
N.T.S.



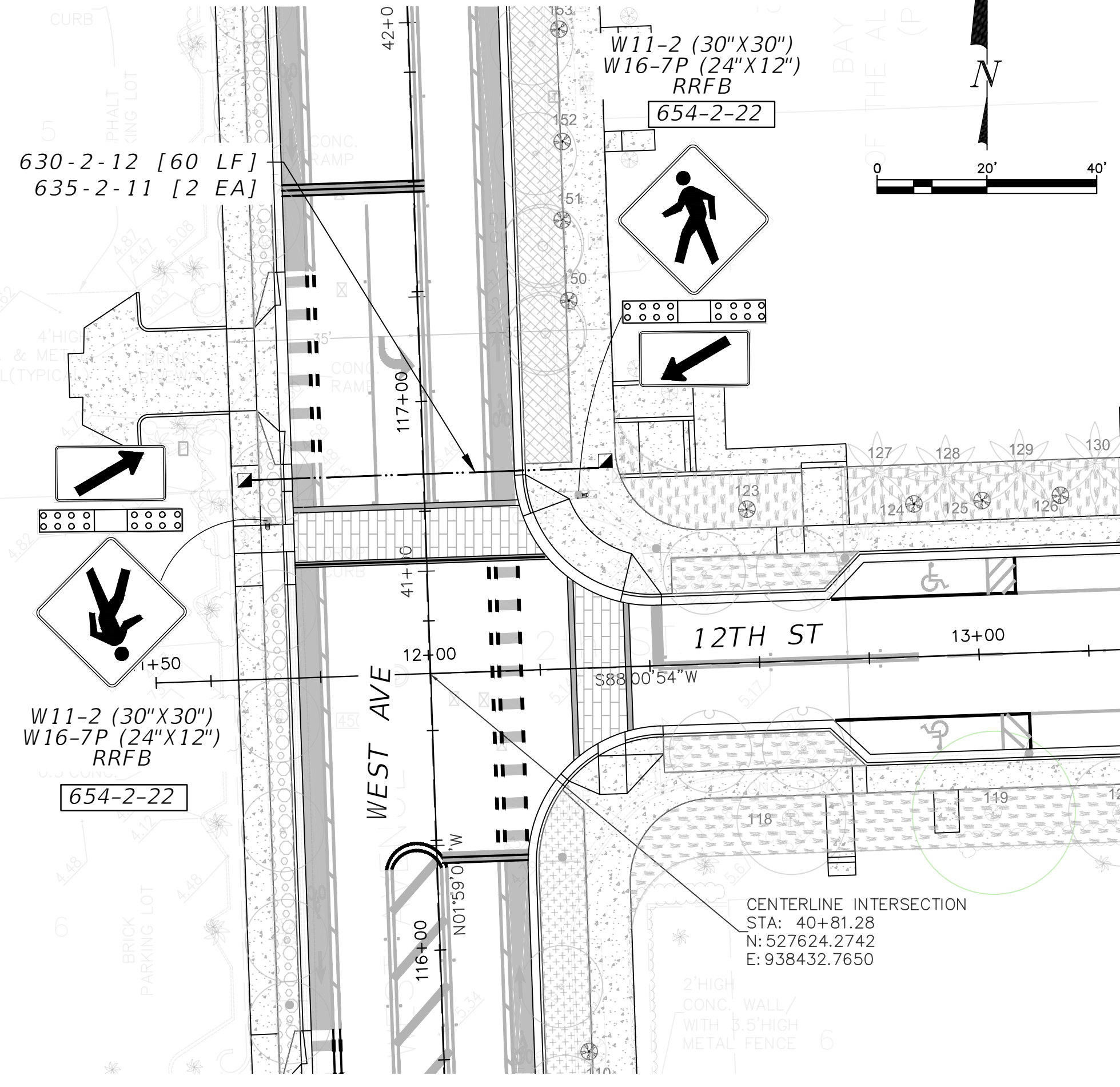
SW CORNER
N.T.S.



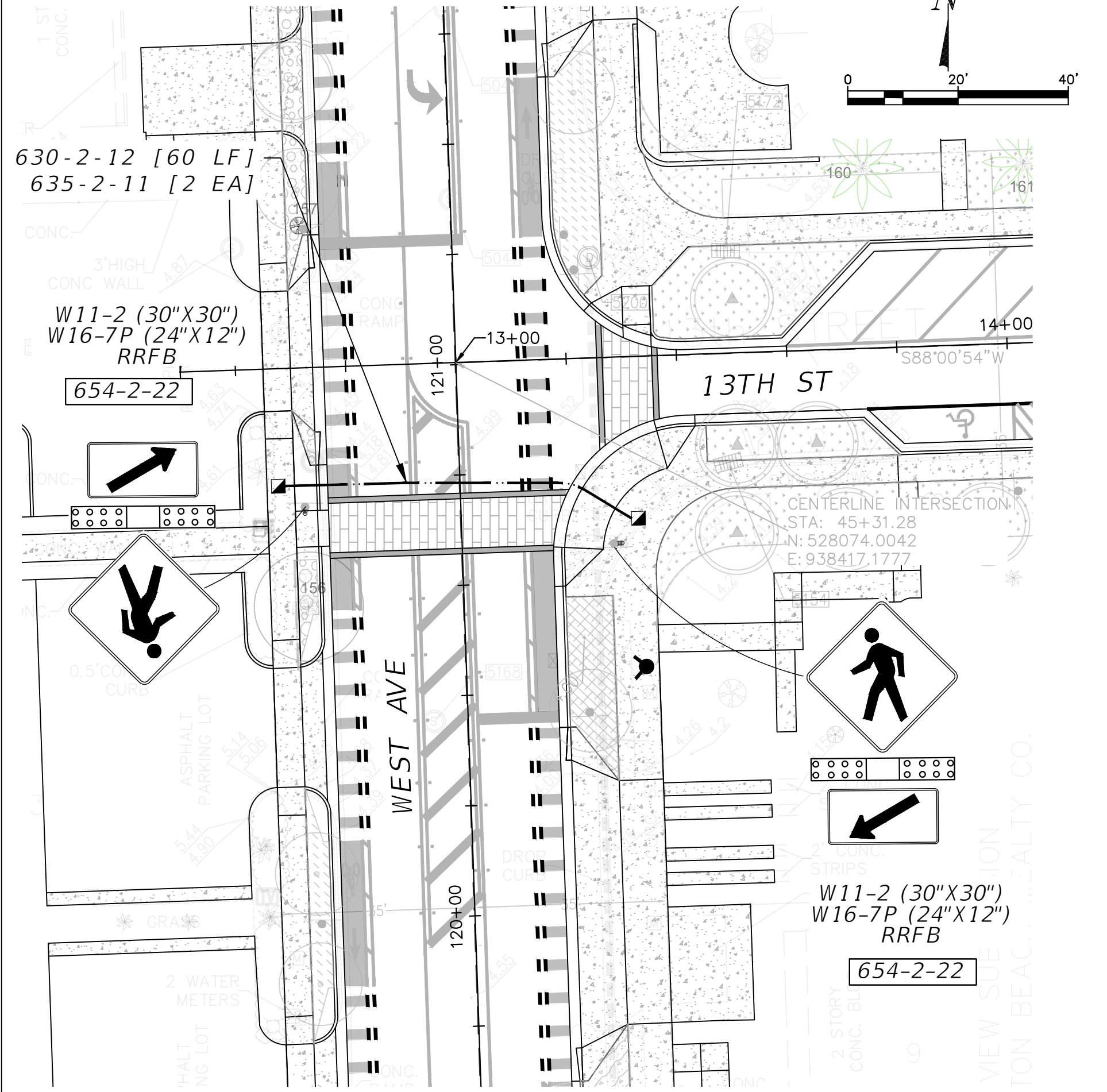
SE CORNER
N.T.S.



9TH STREET
RECTANGULAR RAPID FLASHING BEACON (RRFB)
SOLAR POWERED
BACK TO BACK



12TH STREET
RECTANGULAR RAPID FLASHING BEACON (RRFB)
SOLAR POWERED
BACK TO BACK



13TH STREET
RECTANGULAR RAPID FLASHING BEACON (RRFB)
SOLAR POWERED
BACK TO BACK

PERMIT SET

T-5

NO.	DATE	REVISION	APPD. BY
	09/27/21	REVISED SET	
	09/30/19	PERMIT SET	
A	7/23/19	60% DESIGN SUBMITTAL	

STANDARD MAST ARM ASSEMBLIES DATA TABLE

Table Date 11-01-16

STRUCTURE ID NUMBERS	DESIGNATION	FIRST ARM		SECOND ARM		UF (deg)	LL (deg)	POLE			DRILLED SHAFT ID
		ARM ID	FAA (ft.)	ARM ID	SAA (ft.)			POLE ID	UAA (ft.)	UB (ft.)	
A1	A40/S-P2/S	A40/S	33	---	---	---	---	P2/S	23.0	20.0	*
A2	A40/S-P2/S	A40/S	33	---	---	---	---	P2/S	23.0	20.0	*
A3	A30/S-P1/S	A30/S	27	---	---	---	---	P1/S	23.0	20.0	*
B1	A70/S-P5/S	A70/S	---	---	---	---	---	P5/S	23.0	20.0	*
B2	A40/S-P2/S	A40/S	35	---	---	---	---	P2/S	23.0	20.0	*
B3	A40/S-P2/S	A40/S	---	---	---	---	---	P2/S	23.0	20.0	*

NOTES [Notes Date 11-01-16]:

1. If an entry appears in column FAA, a shorter arm is required. This is obtained by removing length from the arm tip and the arm length shortened from FA to FAA. SAA Similar.
2. If an entry appears in column UAA, a shorter pole is required. This is obtained by removing length from the pole tip and the pole height shortened from UA to UAA.
3. Work this sheet with the Signal Designer's "Mast Arm Tabulation". See "Mast Arm Tabulation" for special instructions that include non-standard Handhole location, paint color, terminal compartment requirement, and pedestrian features.
4. Work with FY21-22 Standard Plans Index 649-030 and 649-031.
5. Design Wind Speed = 170 mph.

* FOUNDATION NOTES:

1. SEE STRUCTURAL PLANS FOR MAST ARM FOUNDATION REQUIREMENTS.

PERMIT SET

T-6



NEIGHBORHOOD: **2016 - 090-KB WEST AVE PHASE II IMPROVEMENTS SOUTH OF 14TH STREET**
 TITLE: **STANDARD MAST ARM ASSEMBLIES DATA TABLE**

CWI
 Civil Works, Inc.
 Consulting Engineers CA 07528
 8491 N.W. 17th Street, Suite 108
 Doral, FL 33126 (305)591-4323

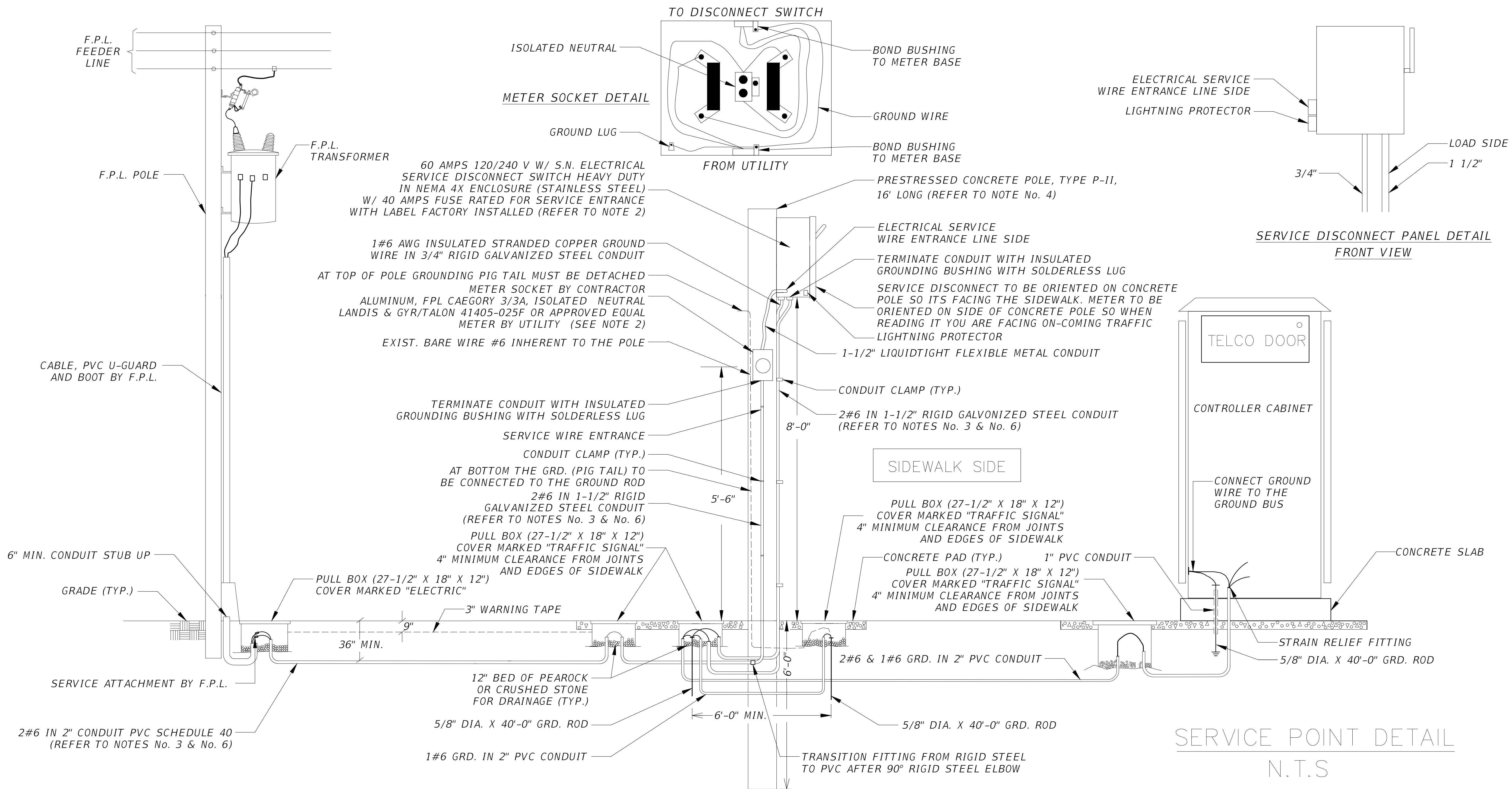
CITY MANAGER: ALINA T. HUDAK.
 DIRECTOR: ERIC T. CARPENTER.
 CITY ENGINEER: NELSON PEREZ-JACOME.

ENG. OF RECORD: JMA
 DESIGN ENGINEER: SH
 DRAWN BY: MA
 CHECKER: SH
 SCALE: AS NOTED

ENGINEER OF RECORD:
 JOSE M. ALDIR
 FL REG No. 71045

NO.	DATE	REVISION	APP'D. BY
09/27/21		REVISED SET	

File Name: MSSG05.dwg
 Survey Reference:
 Field Book: _____ Page: _____ Work Order: 2016-090-KB
 Date: 09/27/21 Sheet: T-6 Drawing: MSSG05

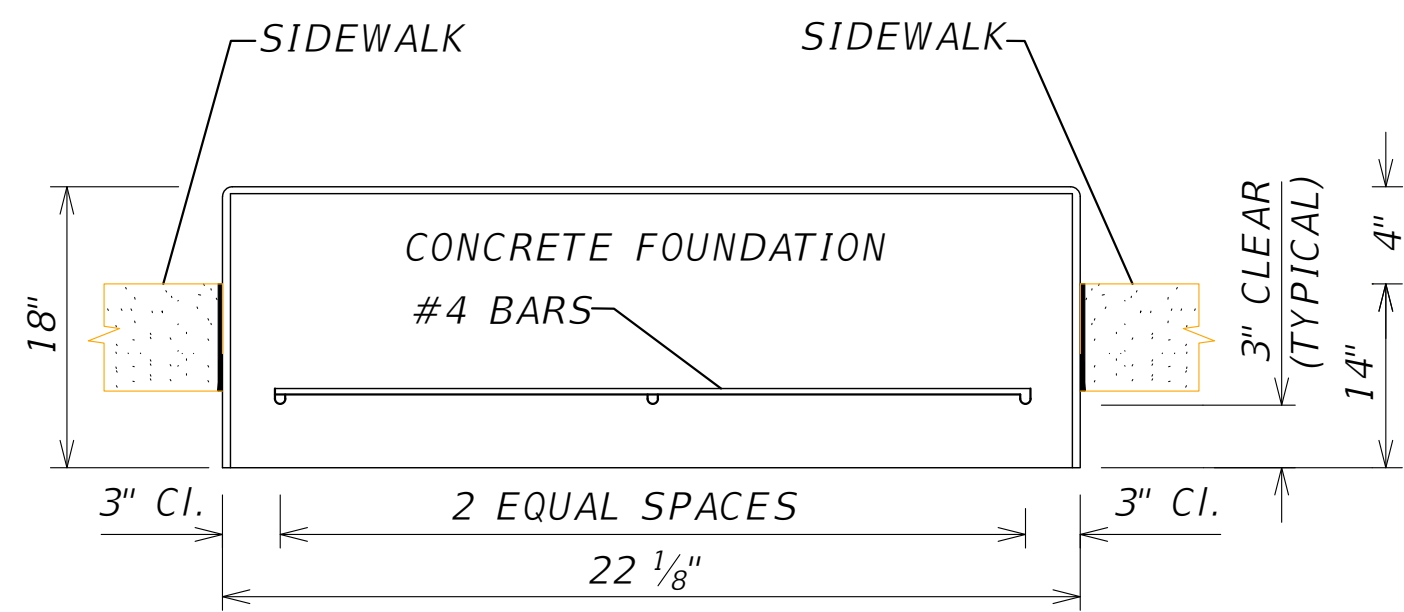


NOTES:

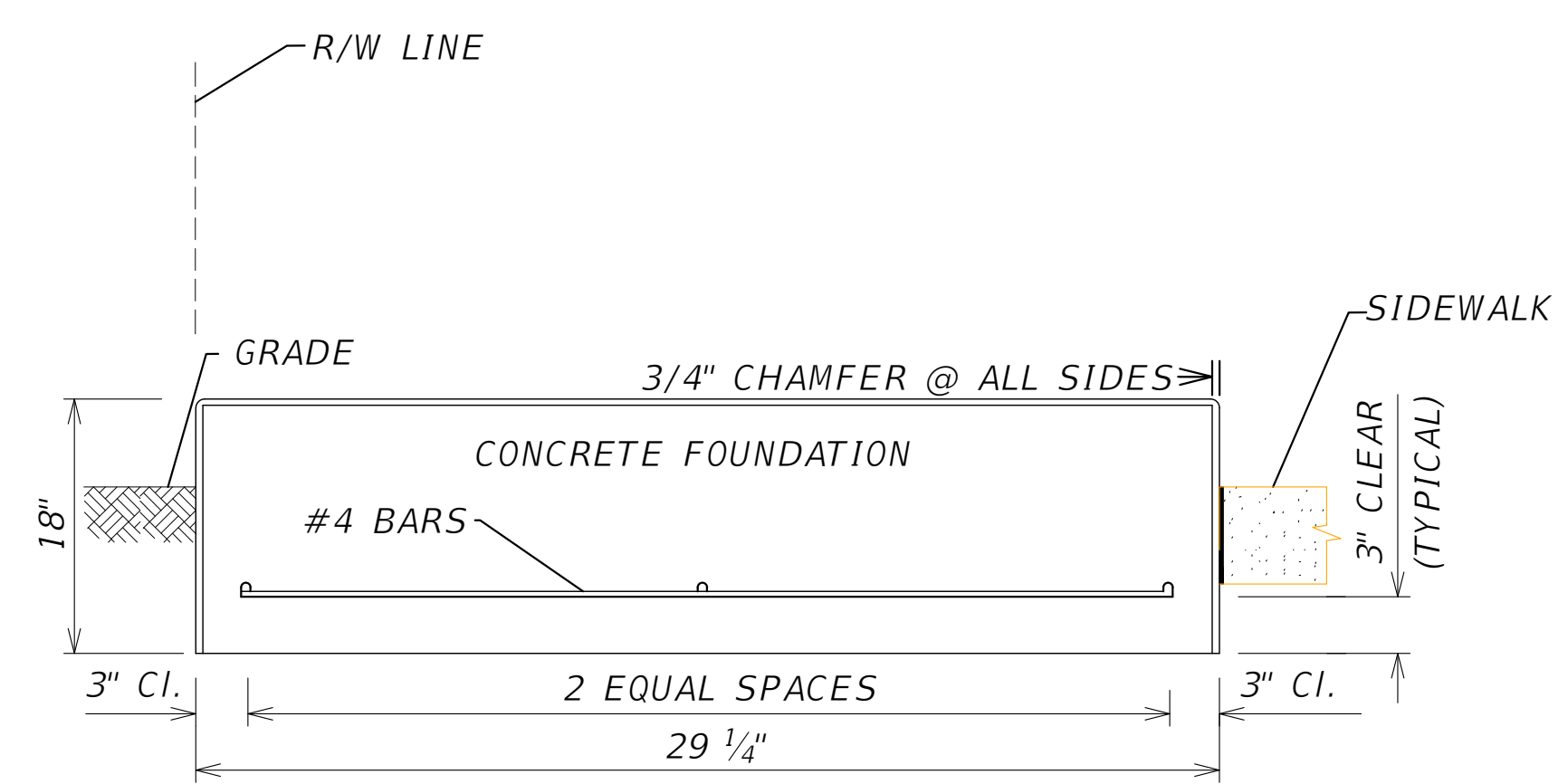
- COORDINATE WITH F.P.L. ENGINEERS FOR THE INSTALLATION OF THE F.P.L. RISER.
- SERVICE DISCONNECT TO BE ORIENTED ON CONCRETE POLE SO ITS FACING THE SIDEWALK. METER TO BE ORIENTED ON SIDE OF CONCRETE POLE SO WHEN READING IT YOU ARE FACING ON-COMING TRAFFIC.
- PROVIDE 2 FEET OF COILED TERMINATION OF CONDUCTOR IN THE PULLBOX MARKED "ELECTRIC".

PERMIT SET

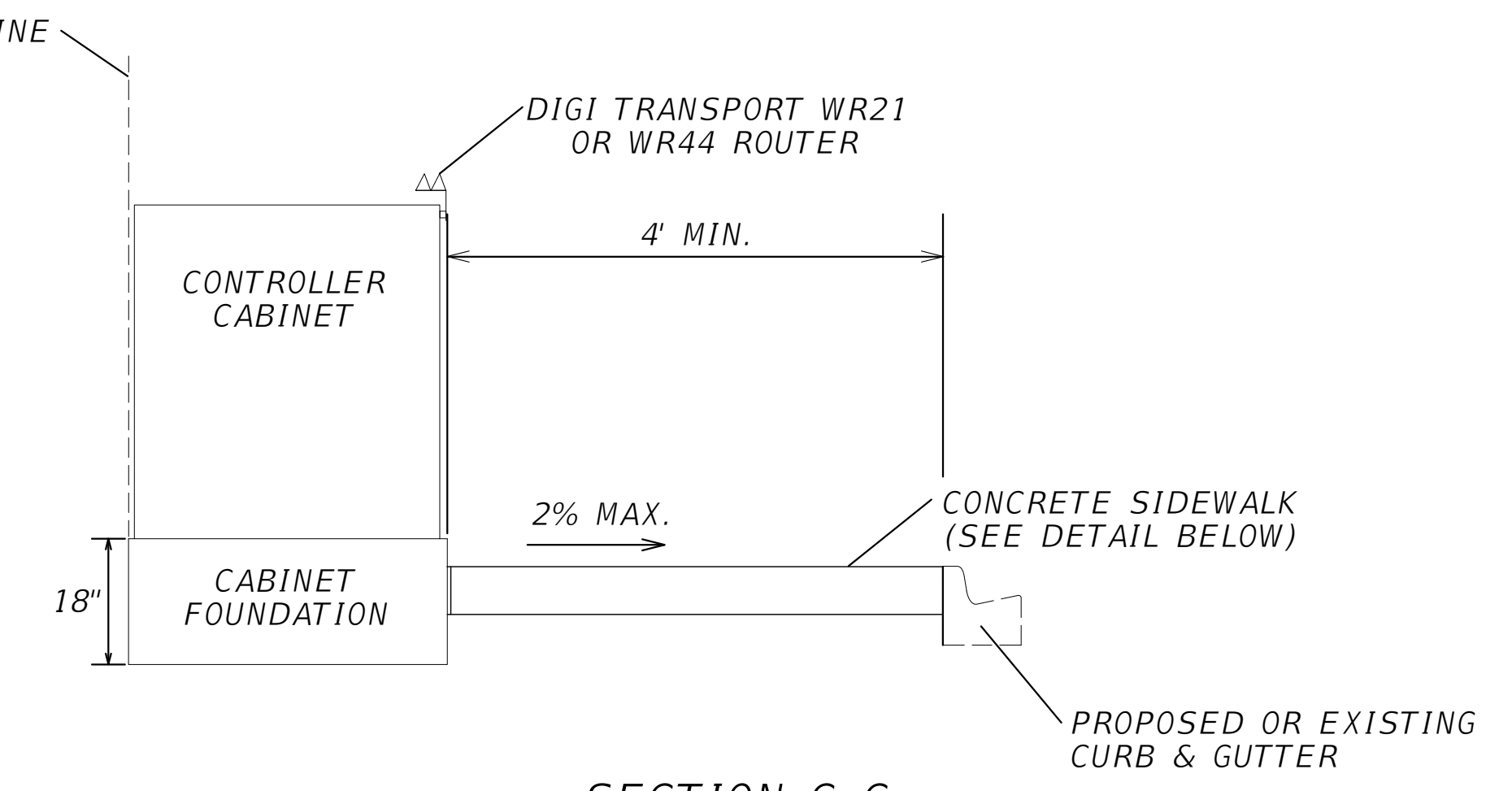
T-8



SECTION A-A



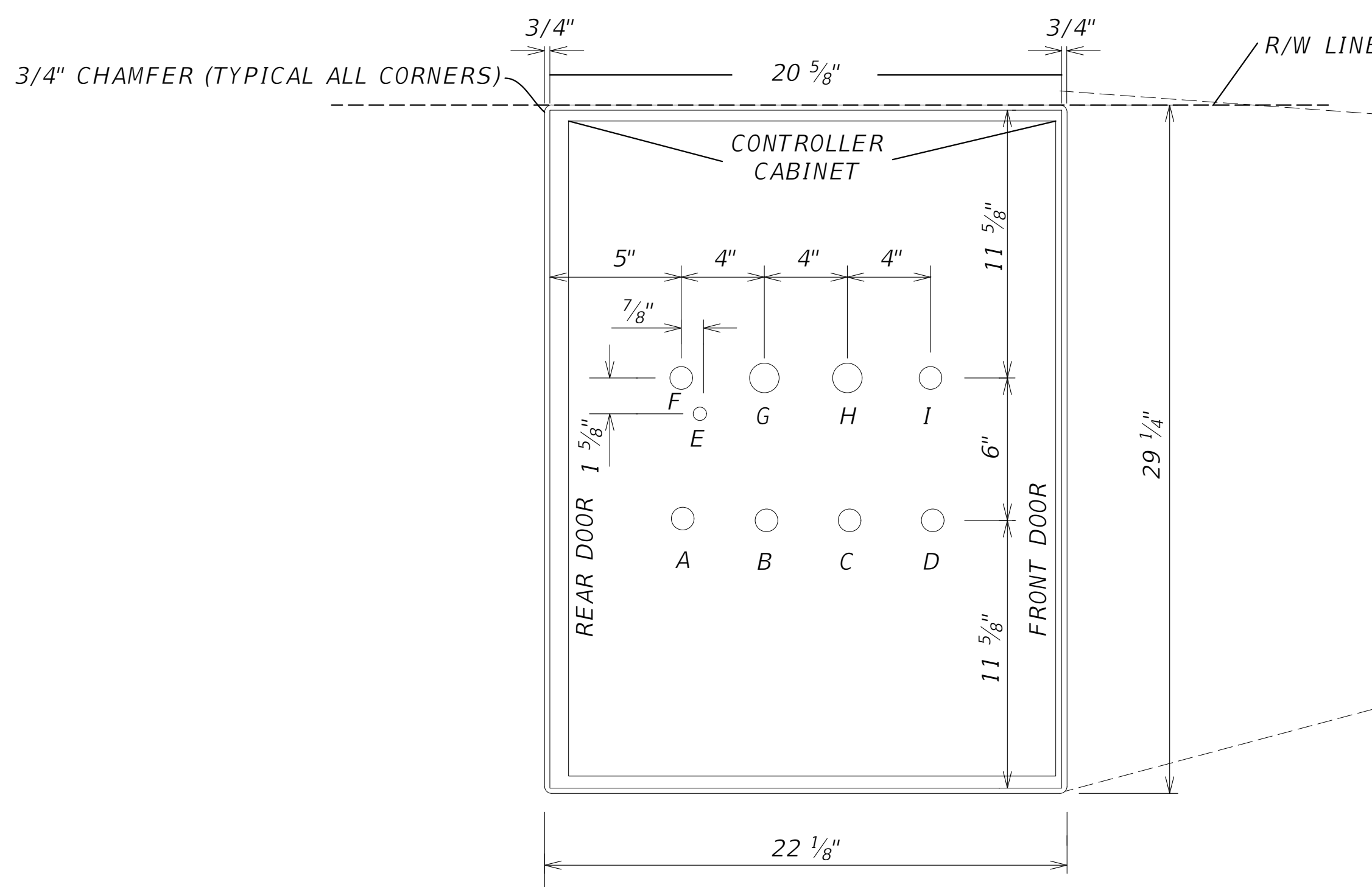
SECTION B-B



SECTION C-C

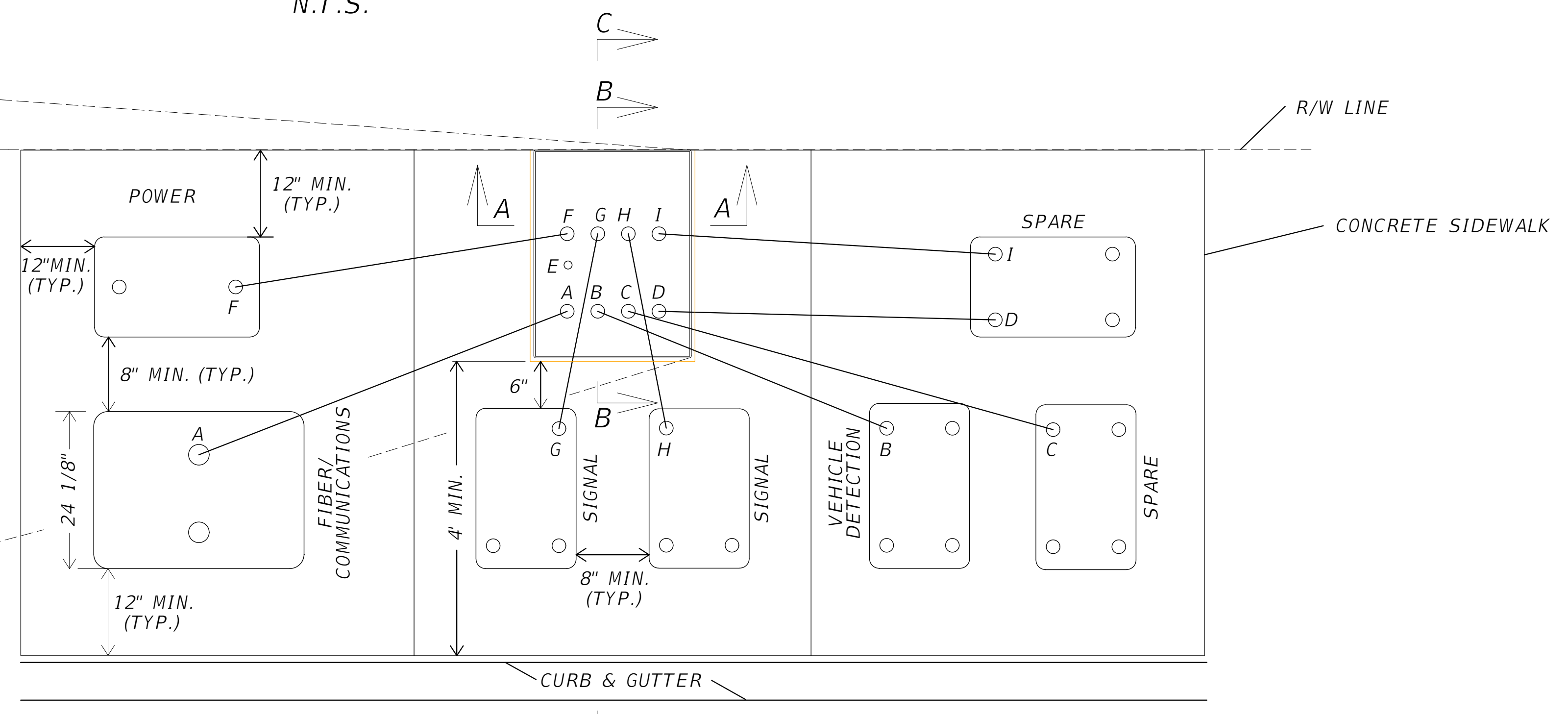
CONTROLLER CABINET CONCRETE FOUNDATION DETAILS

N.T.S.



CONTROLLER CABINET AND CONDUIT ARRANGEMENT DETAIL

N.T.S.



CONTROLLER CABINET AND PULL BOX DETAIL

N. T. S.

NOTES:

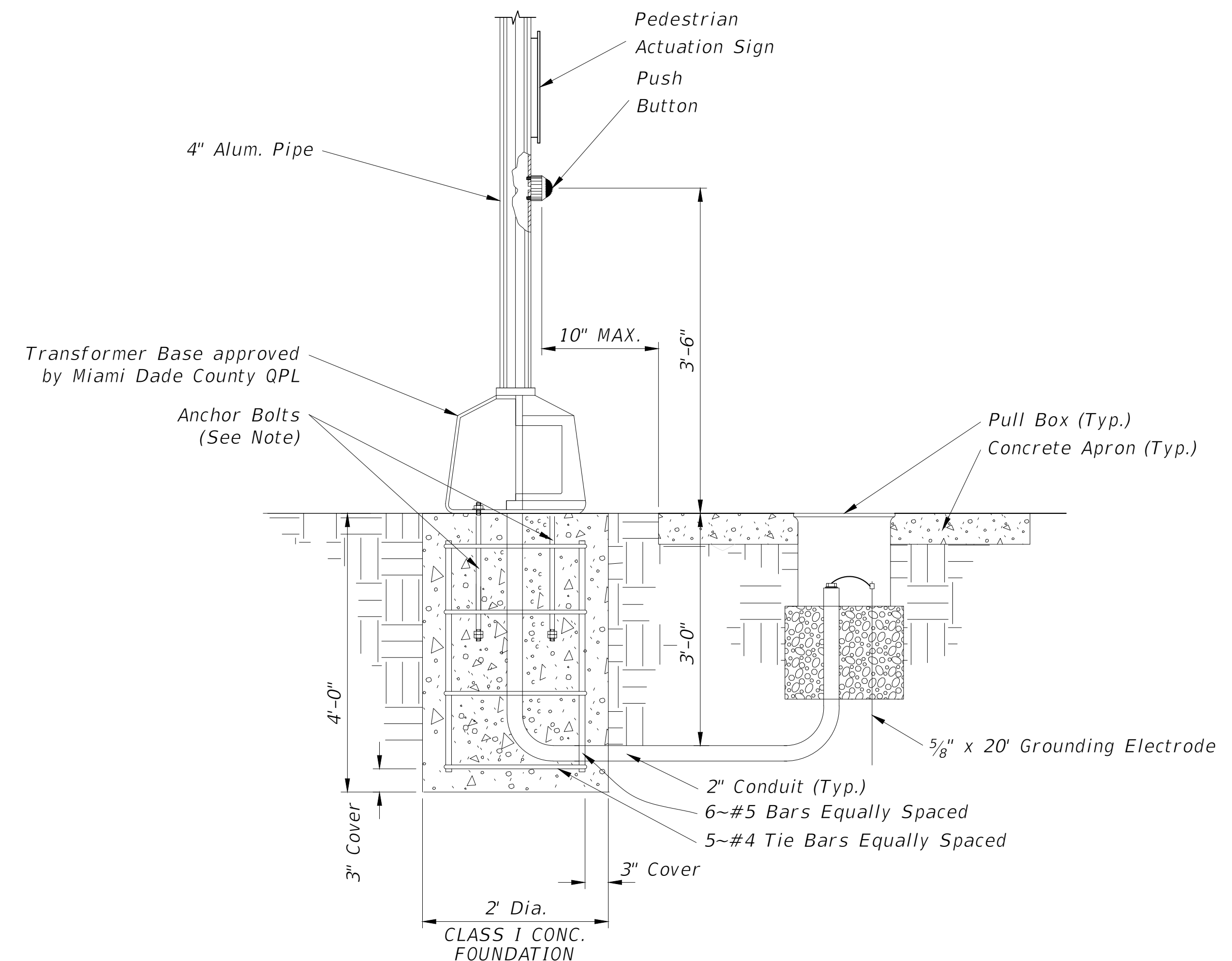
1. NO DEVIATION FROM LAYOUT. LOCATION OF CONDUIT SHALL NOT CHANGE FROM DESIGNATED PULLBOX.

DESIGNATION	TYPE	FUNCTION
A	2" PVC	FIBER/COMMUNICATIONS
B	2" PVC	VEHICLE DETECTION
C	2" PVC	SPARE
D	2" PVC	SPARE
E	1" PVC	GROUND ROD
F	2" PVC	POWER
G	3" PVC	SIGNAL CABLE
H	3" PVC	SIGNAL CABLE
I	2" PVC	SPARE

PERMIT SET

T-9

\\COMPUTER-15\Projects\Server17\Projects\17105 - West Ave South\Working Directory\SSDTSG05.dwg



NOTE: INSTALL 4-3/4" x 18" ANCHOR BOLTS WITH DOUBLE NUTS. (ASTM F1554 GRADE 55)

**PED PEDESTAL ASSEMBLY
INSTALLATION DETAIL**
NTS

PERMIT SET

T-10



NEIGHBORHOOD: **2016 - 090-KB WEST AVE PHASE II IMPROVEMENTS SOUTH OF 14TH STREET**
TITLE: **SIGNAL DETAILS**

CWI
Civil Works, Inc.
Consulting Engineers CA 07528
8491 N.W. 17th Street, Suite 108
Doral, FL 33126 (305)591-4323

CITY MANAGER: ALINA T. HUDAK.
DIRECTOR: ERIC T. CARPENTER.
CITY ENGINEER: NELSON PEREZ-JACOME.

ENG. OF RECORD: JMA
DESIGN ENGINEER: SH
DRAWN BY: MA
CHECKER: SH
SCALE: AS NOTED

ENGINEER OF RECORD:
JOSE M. ALDIR
FL REG No. 71045

NO.	DATE	REVISION	APP'D. BY
A	09/27/21	FOR PERMIT SUBMITTAL	

File Name: SSDTSG05A.dwg
Survey Reference:
Field Book: _____ Page: _____ Work Order: 2016-090-KB
Date: 09/27/21 Sheet: T-10 Drawing: SSDTSG05A