



800 Lincoln Road, Miami Beach, Florida
Second Floor Operating Hours

Existing CUP Approvals & Hearing Today

- The Third Floor CUP was first approved in February 2019 and modified in December 2020 and closes at 2:00am
- The Second Floor CUP was approved in July 2021 with hours until 2:00am and entertainment until 1:00am
- We are only here today on the request to allow the hours and Entertainment through 4am with specific conditions

Fully Enclosed

- The second floor restaurant/lounge area with entertainment is fully enclosed and embedded within the building
- Access to the second floor from the entrance requires entering the building and then using an elevator
- No direct connection from the entrance to the second floor restaurant/lounge area with entertainment

Private Membership

- The second floor will only be open to private members (not the general public), so unlike venues open to the general public:
 - The number of potential patrons is limited
 - The membership will have terms (including the ability to revoke the membership in certain instances)
 - Identity of patrons/members will be known as they check in
 - Operator has a method to communicate with patrons/members (i.e. email/text)
 - Membership program is designed for a mature demographic

Three Small/Distinct Venues

- The second floor private club the following three small/distinct venues, which are meant to design a multi-sensory experience:
 1. Omakase Dining Experience
 2. Cozy Salon
 3. Lounge Area

Omakase

- Comprised of only ten (10) seats
- Offers a chef-driven 10-course dining experience featuring refined flavor profiles in a secluded room
- Will **only** offer music played at a background level (i.e. below a level that would interfere with normal conversation)

Salon

- Area for guests to relax (i.e. a quiet getaway)
- Will host exclusive events, such as art exhibitions
- Offer a crafted cocktail program and a rolling cocktail cart
- Will **only** offer music played at a background level (i.e. below a level that would interfere with normal conversation)

Lounge

- Reduced the CUP application request so the only area with a DJ playing music above a background level will be the fully enclosed Lounge
- As a result, the patron occupancy for all areas with entertainment is limited 102 patrons
- There is no portion of the Lounge with a direct opening to the entrance (i.e. it is completely enclosed/embedded within the building)
- Will provide a limited entertainment component in the same structure for guests to enjoy after their dining experience

Security

- Given the private membership aspect, there is an enhanced level of security
- Aside from interior security, Mila's security posted outside at the ground level (at the only entrance/exit) will be on duty during the entire 2:00 a.m. to 4:00 a.m. operating hours
- Security personnel will protect the members and ensure members conduct themselves in a manner so as not to disturb anyone when leaving, including the inhabitants of the apartment building to the south

Valet & Car Service

- The applicant will requests members contact the valet or a car service (such as Uber) prior to leaving the second floor after 2:00 a.m. to limit outside wait times

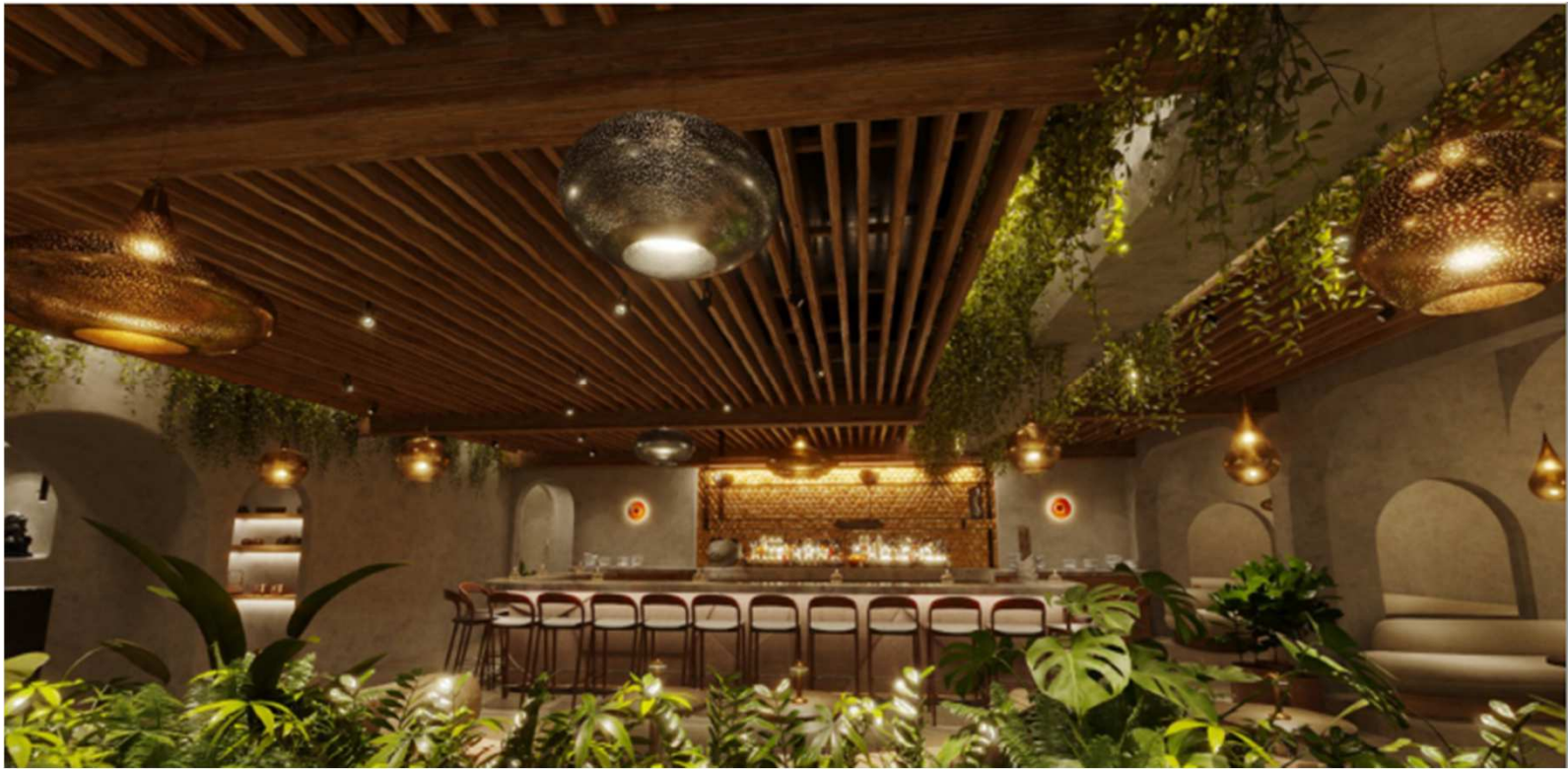
Phased Closing

- As the existing third floor restaurant operations close at 2:00 a.m., extending the second floor closing hours to 4:00 a.m. has the following benefits:
 - The closing times are phased, thereby reducing the number of guests leaving (and being on the ground floor level outside) at a given time
 - Extending the second floor closing hours to 4:00 a.m. presumable decreases the number of patrons outside at the ground level at both 2:00 a.m. and 4:00 a.m.

Second Floor Tour



Second Floor Tour



Second Floor Tour



Second Floor Tour



Second Floor Tour



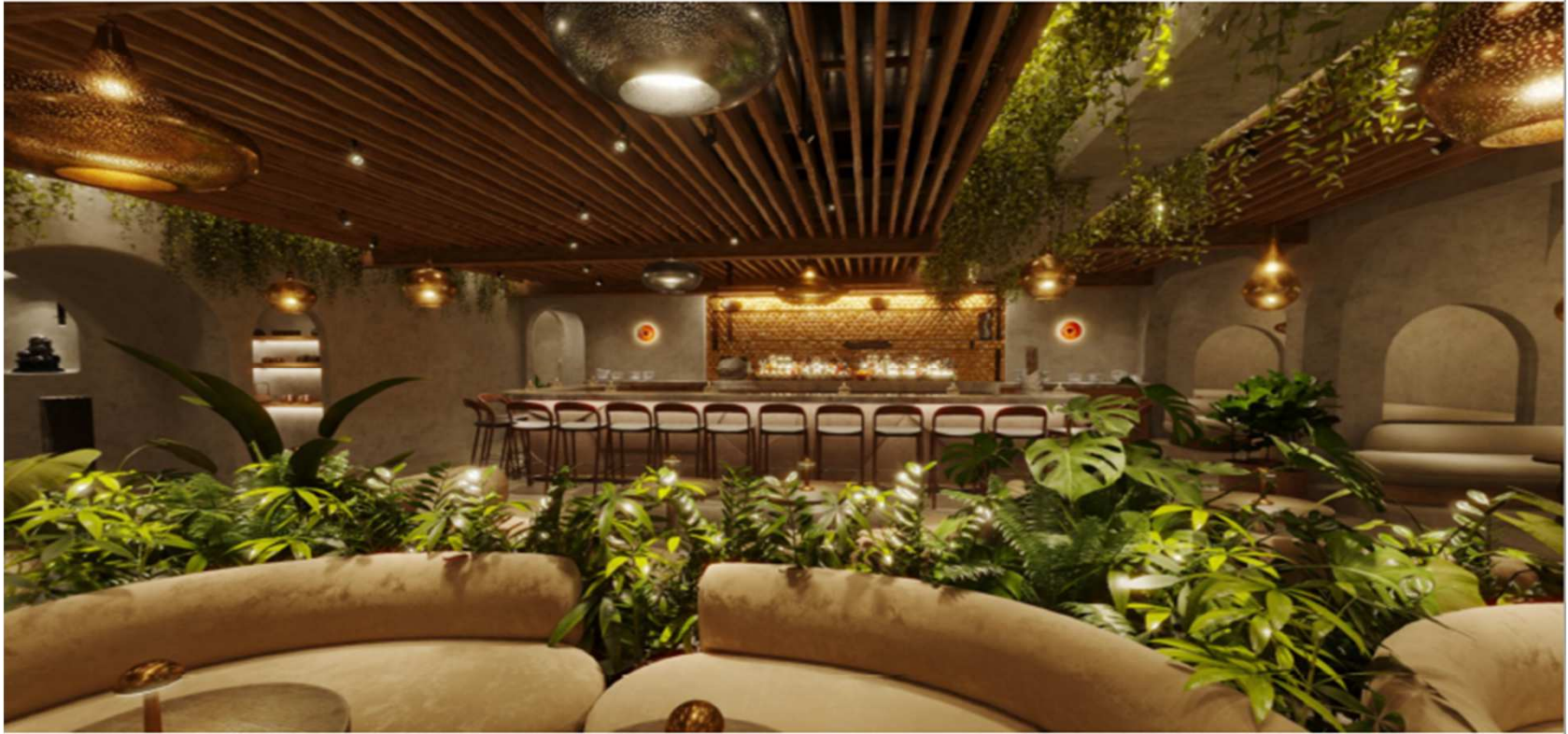
Second Floor Tour



Second Floor Tour



Second Floor Tour



Second Floor Tour



Second Floor Tour

