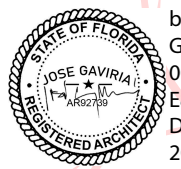




SCALE: 3/32" = 1'-0"



Digitally signed  
by Jose A  
Gaviria:A01410C  
00000177EFCCC  
E8C0001612F  
Date:  
2021.09.07  
09:35:50 -05'00'

**gaviria architects**

9427 Fountainbleau Blvd. #206 Miami, FL 33172  
T: 954.6100148 / 305.9056839  
www.j-gaviria.com AR 92739

No copies, transmissions, reproductions, or electronic manipulation of any portion of these drawings in whole or in part are to be made without the express written permission of gaviria architects. All designs indicated in these drawings are property of gaviria architects. All copyrights reserved (c) 2021.

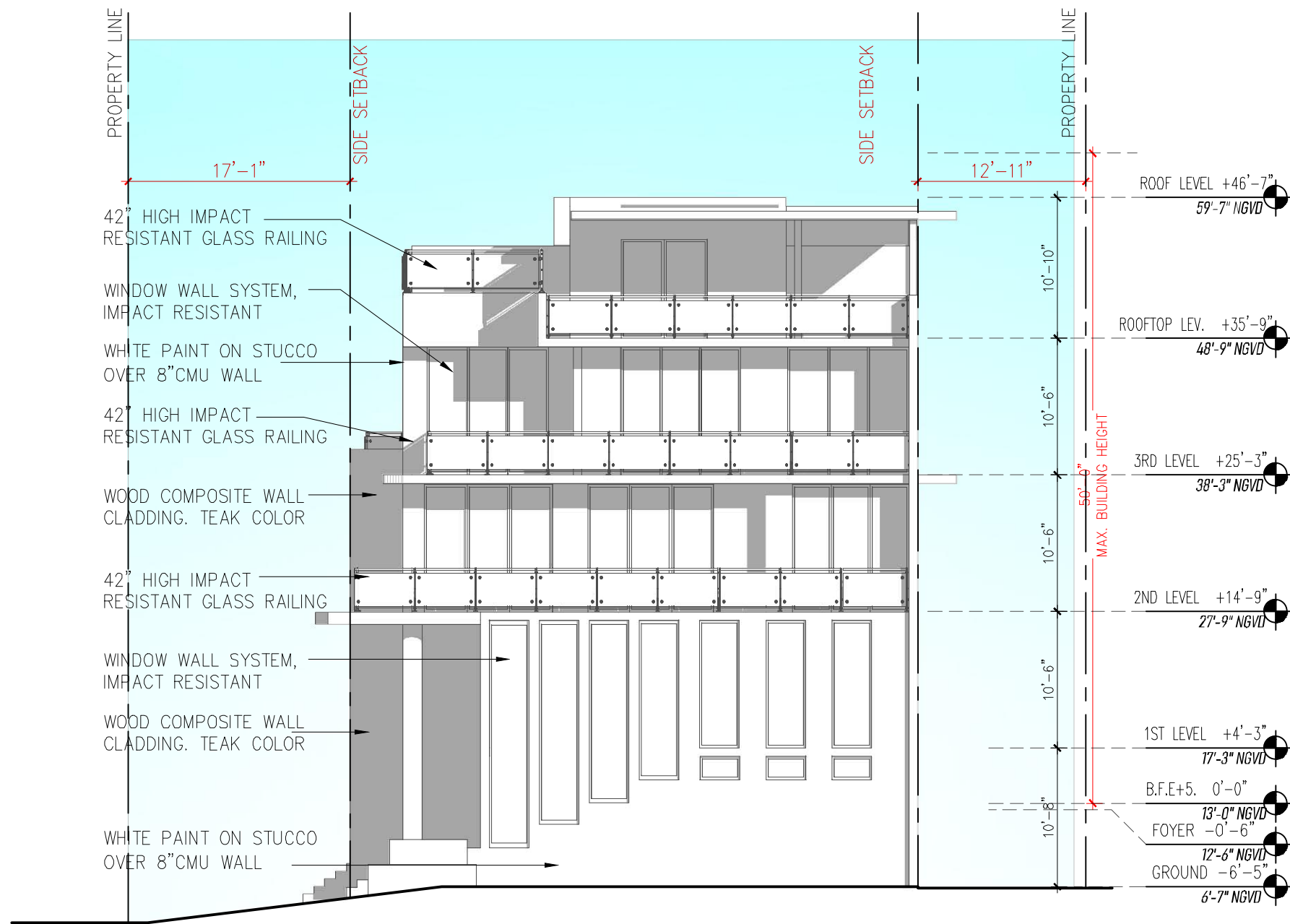
DESIGN REVIEW BOARD FINAL SUBMITTAL  
5 TOWNHOUSES - 7300 TROUVILLE ESPLANADE,  
MIAMI BEACH FL 33141

FRONT(EAST) ELEVATION

DATE:  
09/07/2021

A2-01





SCALE 3/32" = 1'-0"



Digitally signed by Jose A Gaviria:A01410 C00000177EFC CCE8C0001612 F Date: 2021.09.07 09:36:19 -05'00'

**gaviria architects**

9427 Fountainbleau Blvd. #206 Miami, FL 33172  
 T: 954.6100148 / 305.9056839  
 www.j-gaviria.com AR 92739  
 No copies, transmissions, reproductions, or electronic manipulation of any portion of these drawings in whole or in part are to be made without the express written permission of gaviria architects. All designs indicated in these drawings are property of gaviria architects. All copyrights reserved (c) 2021.

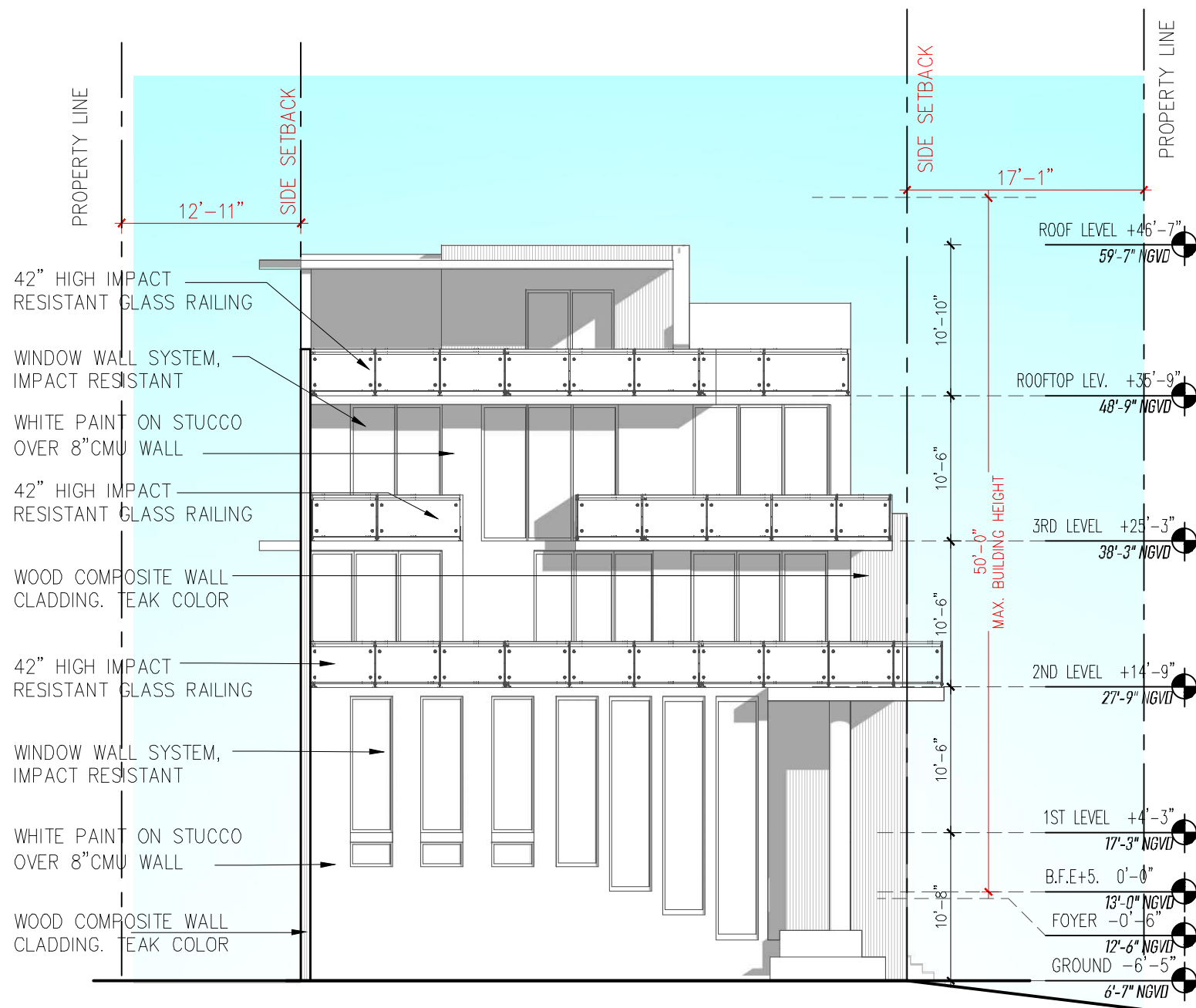
DESIGN REVIEW BOARD FINAL SUBMITTAL  
 5 TOWNHOUSES - 7300 TROUVILLE ESPLANADE,  
 MIAMI BEACH FL 33141

**NORTH ELEVATION**

DATE:  
 09/07/2021

**A2-02**





SCALE: 3/32" = 1'-0"



Digitally signed  
by Jose A  
Gaviria:A01410  
C00000177EFC  
CCE8C0001612  
F  
Date:  
2021.09.07  
09:36:37 -05'00'

**gaviria architects**

9427 Fountainbleau Blvd. #206 Miami, FL 33172  
T: 954.6100148 / 305.9056839  
www.j-gaviria.com AR 92739

No copies, transmissions, reproductions, or electronic manipulation of any portion of these drawings in whole or in part are to be made without the express written permission of gaviria architects. All designs indicated in these drawings are property of gaviria architects. All copyrights reserved (c) 2021.

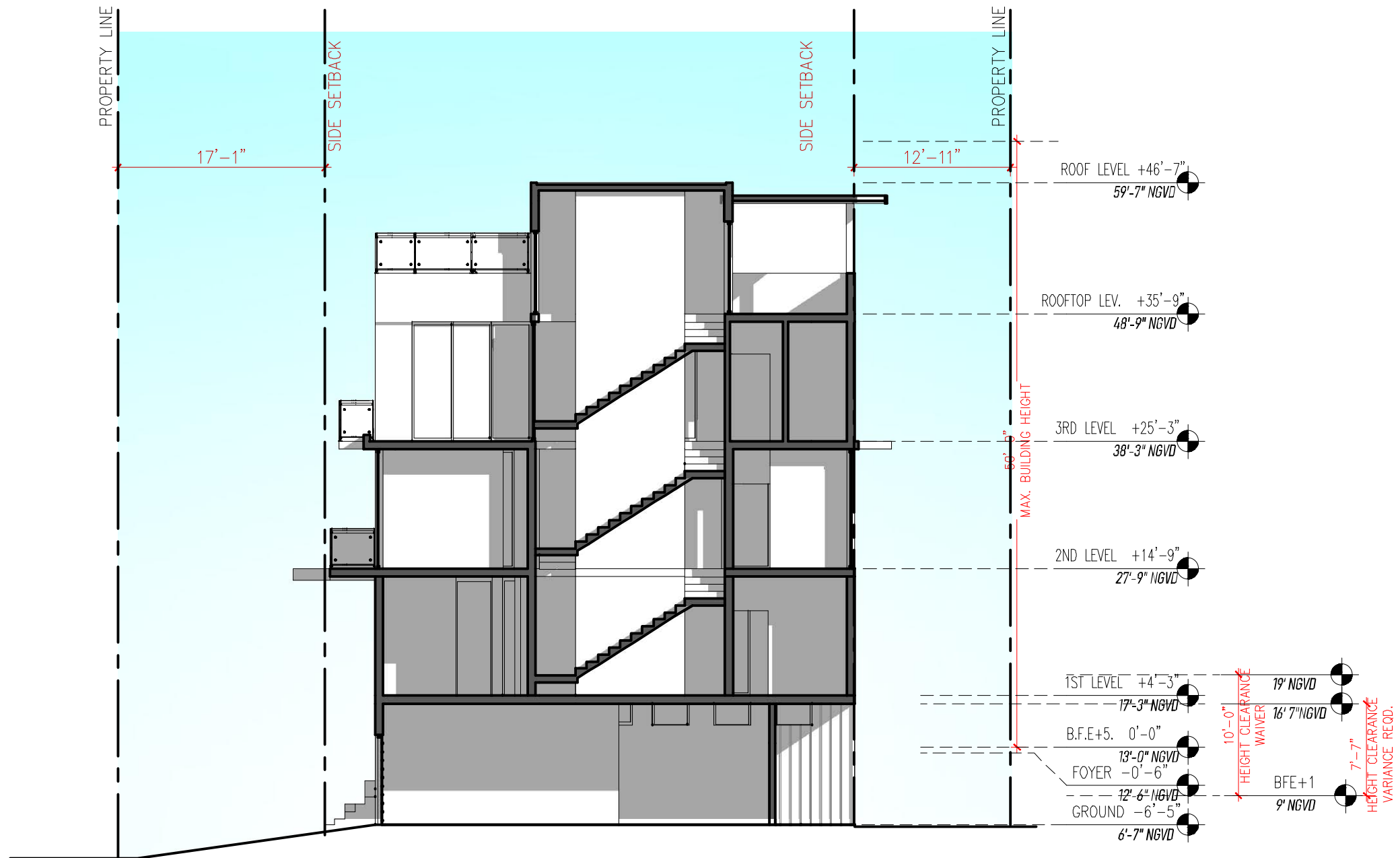
DESIGN REVIEW BOARD FINAL SUBMITTAL  
5 TOWNHOUSES - 7300 TROUVILLE ESPLANADE,  
MIAMI BEACH FL 33141

**SOUTH ELEVATION**

DATE:  
09/07/2021

**A2-03**





Digitally signed  
by Jose A  
Gaviria:A01410  
C00000177EFC  
CCE8C0001612  
F  
Date:  
2021.09.07  
09:36:58 -05'00'

**gaviria architects**

9427 Fountainbleau Blvd. #206 Miami, FL 33172  
T: 954.6100148 / 305.9056839  
www.j-gaviria.com AR 92739

No copies, transmissions, reproductions, or electronic manipulation of any portion of these drawings in whole or in part are to be made without the express written permission of gaviria architects. All designs indicated in these drawings are property of gaviria architects. All copyrights reserved (c) 2021.

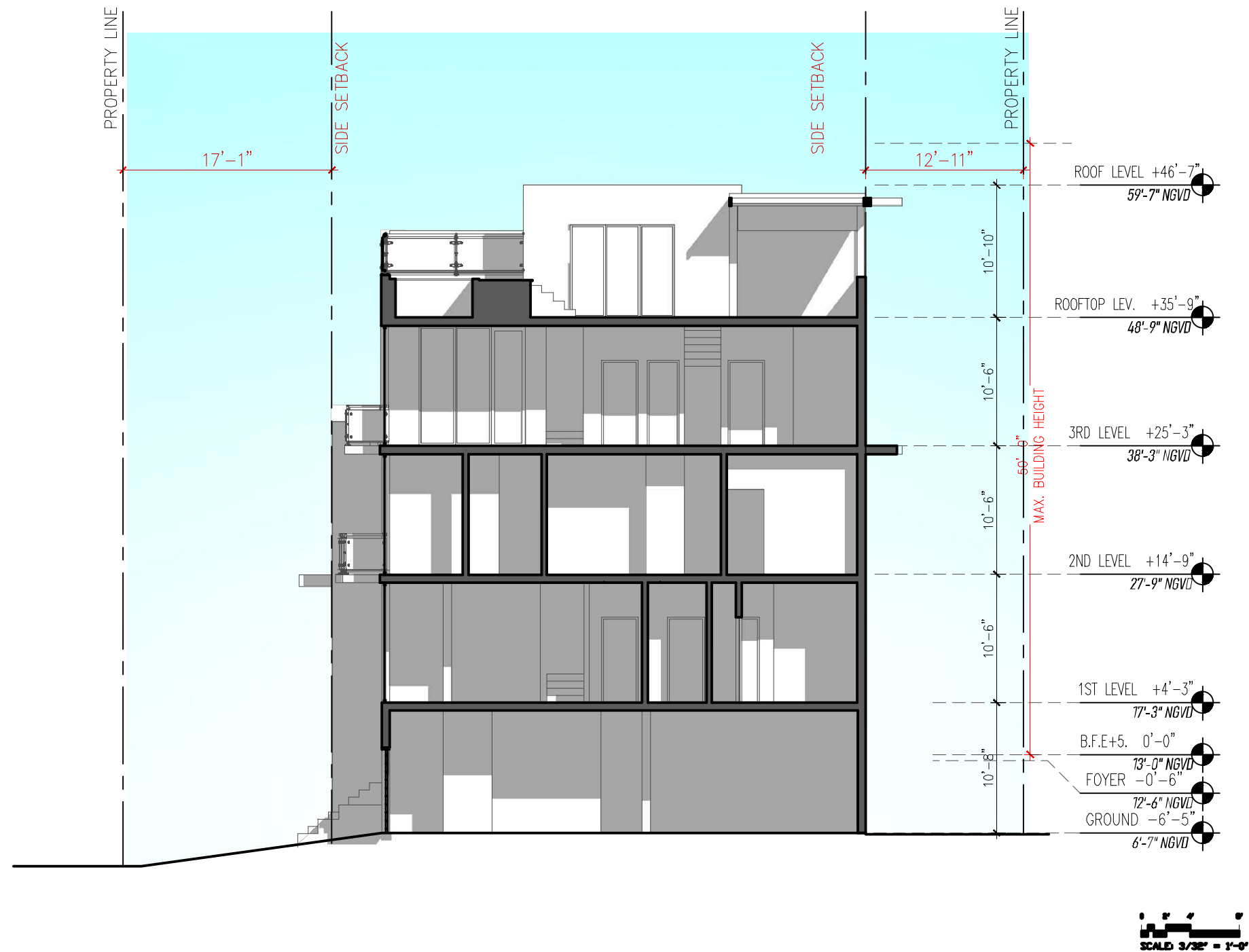
DESIGN REVIEW BOARD FINAL SUBMITTAL  
5 TOWNHOUSES - 7300 TROUVILLE ESPLANADE,  
MIAMI BEACH FL 33141

SECTION 1

DATE:  
09/07/2021

A3-01





Digitally signed  
by Jose A  
Gaviria:A01410  
C00000177EFC  
CCE8C0001612  
F  
Date:  
2021.09.07  
09:37:19 -05'00'

**gaviria architects**

9427 Fountainbleau Blvd. #206 Miami, FL 33172  
T: 954.6100148 / 305.9056839  
www.j-gaviria.com AR 92739

No copies, transmissions, reproductions, or electronic manipulation of any portion of these drawings in whole or in part are to be made without the express written permission of gaviria architects. All designs indicated in these drawings are property of gaviria architects. All copyrights reserved (c) 2021.

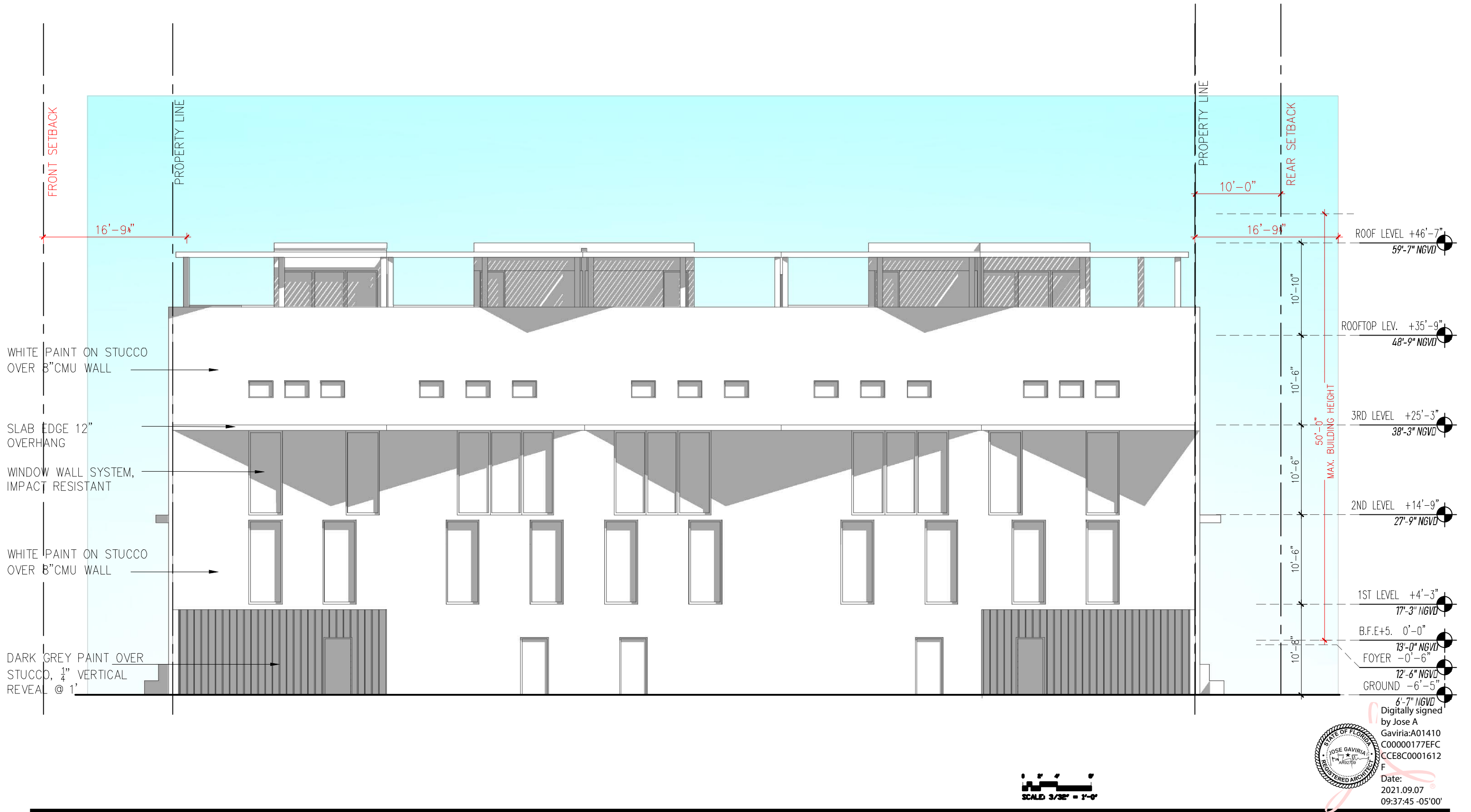
DESIGN REVIEW BOARD FINAL SUBMITTAL  
5 TOWNHOUSES - 7300 TROUVILLE ESPLANADE,  
MIAMI BEACH FL 33141

SECTION 2

DATE:  
09/07/2021

A3-02





**gaviria architects**

9427 Fountainbleau Blvd. #206 Miami, FL 33172  
T: 954.6100148 / 305.9056839  
www.j-gaviria.com AR 92739

No copies, transmissions, reproductions, or electronic manipulation of any portion of these drawings in whole or in part are to be made without the express written permission of gaviria architects. All designs indicated in these drawings are property of gaviria architects. All copyrights reserved (c) 2021.

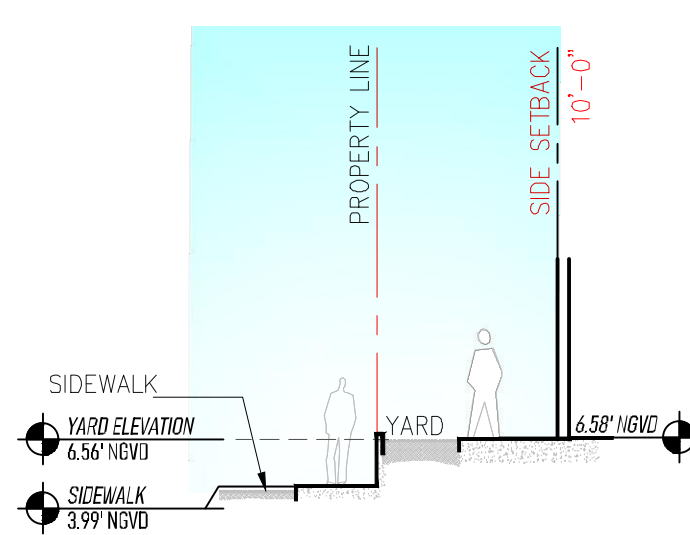
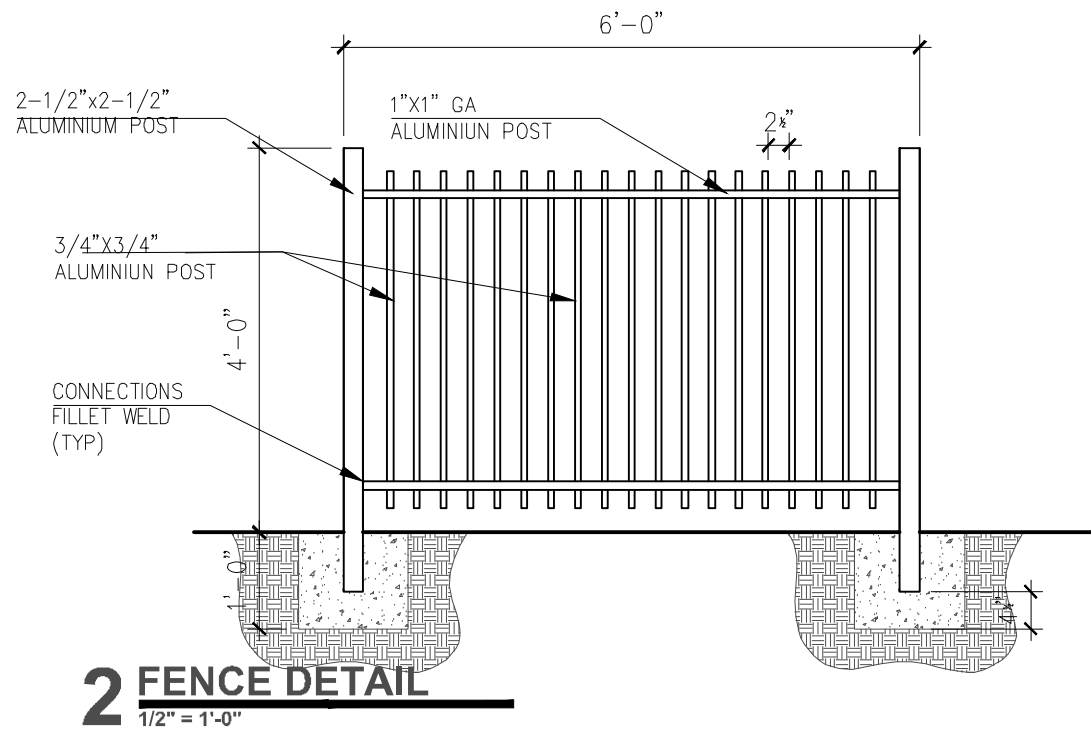
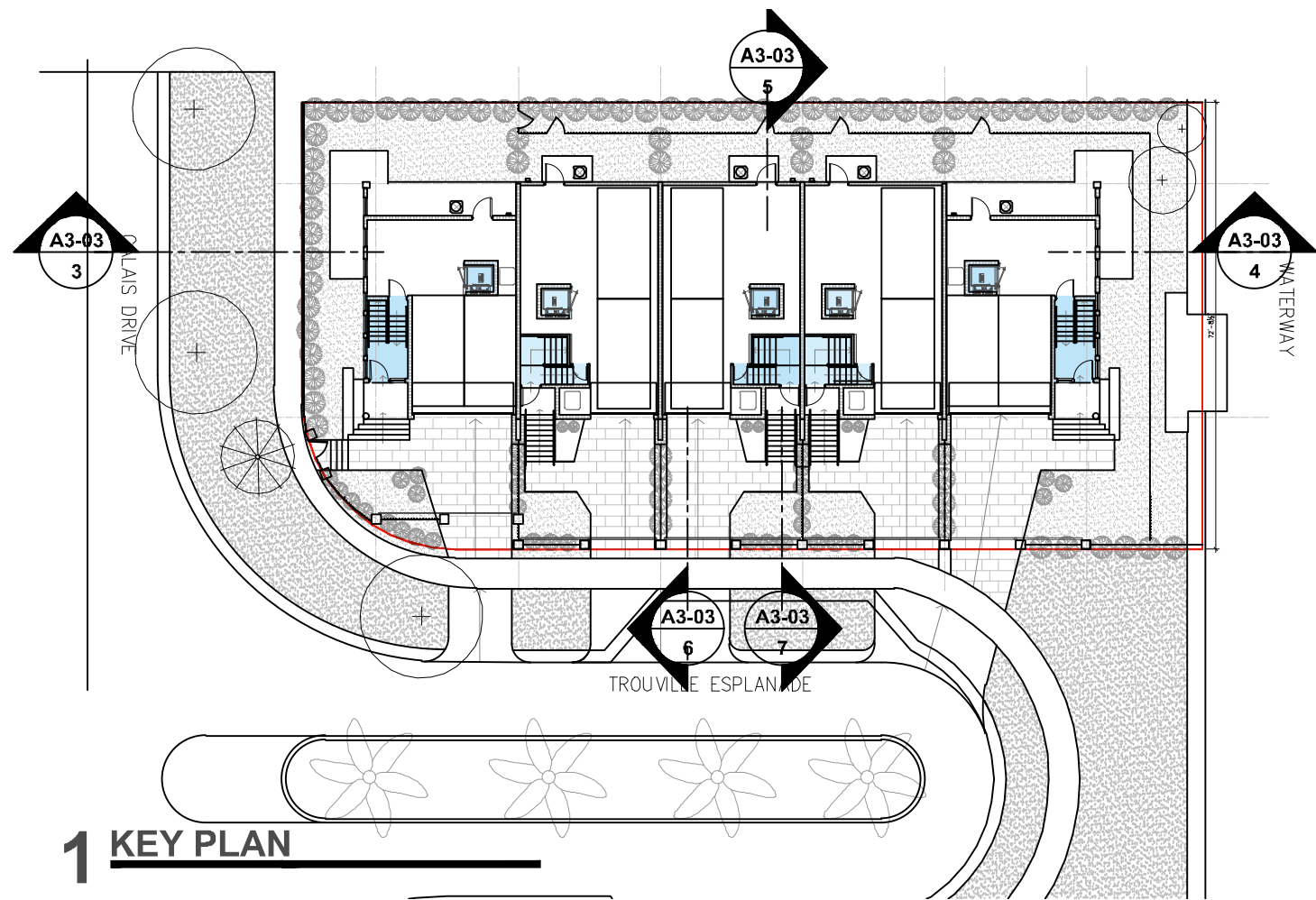
DESIGN REVIEW BOARD FINAL SUBMITTAL  
5 TOWNHOUSES - 7300 TROUVILLE ESPLANADE,  
MIAMI BEACH FL 33141

WEST ELEVATION

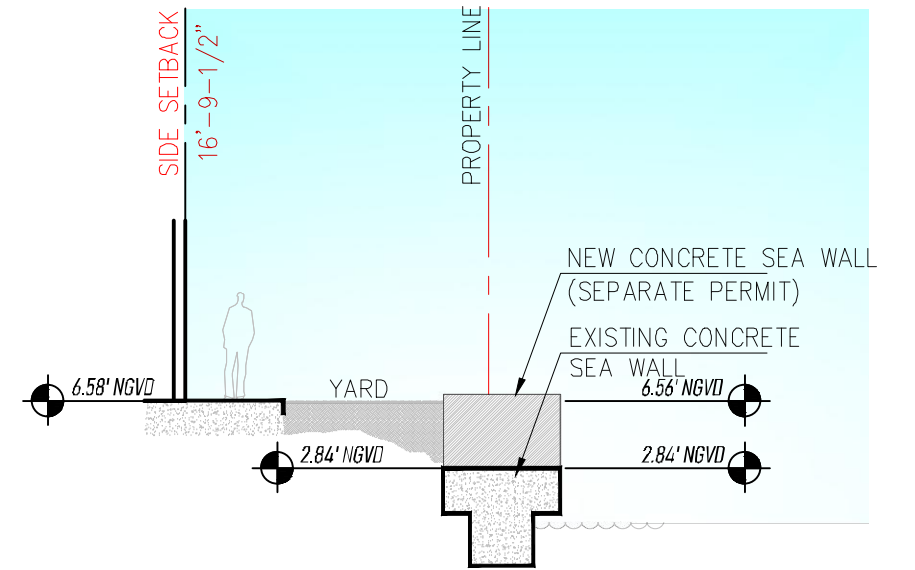
DATE:  
09/07/2021

A2-04

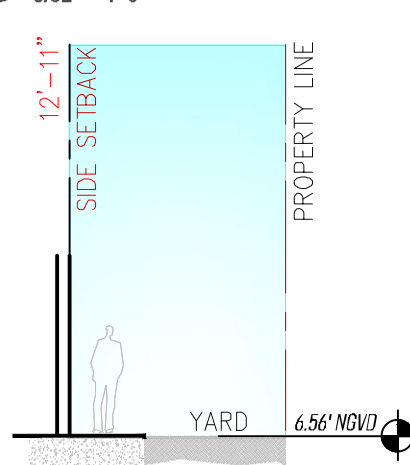




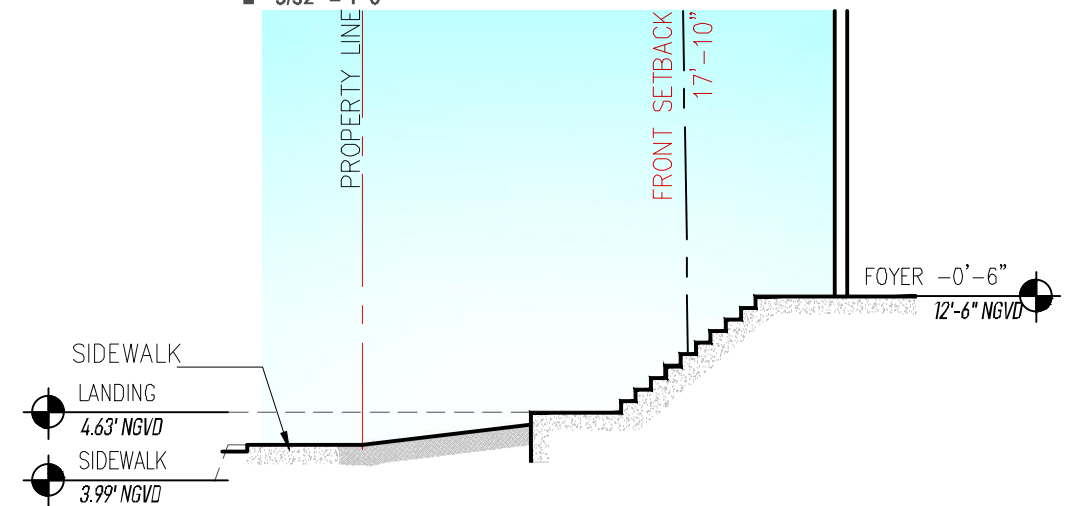
**3 YARD SECTION 01**  
3/32" = 1'-0"



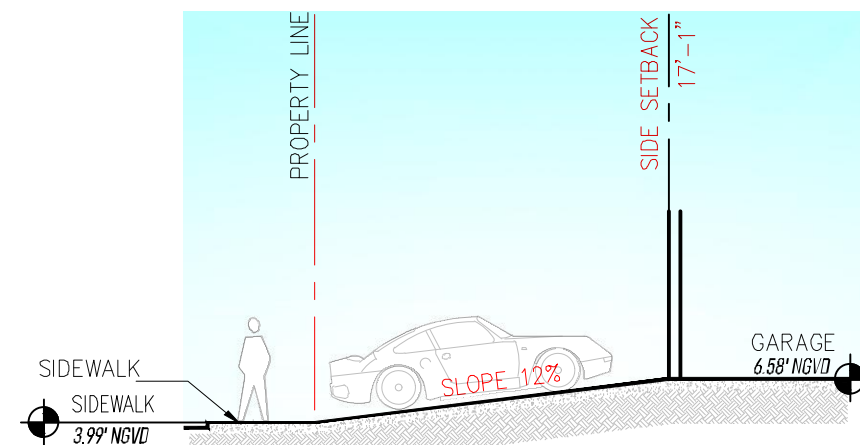
**4 YARD SECTION 02**  
3/32" = 1'-0"



**5 YARD SECTION 03**  
3/32" = 1'-0"



**6 YARD SECTION 04**  
3/32" = 1'-0"



**7 YARD SECTION 05**  
3/32" = 1'-0"

Digitally signed  
by Jose A  
Gaviria:A01410  
C00000177EFC  
CCE8C0001612  
F  
Date:  
2021.09.07  
09:38:07 -05'00'

**gaviria architects**

9427 Fountainbleau Blvd. #206 Miami, FL 33172  
T: 954.6100148 / 305.9056839  
www.j-gaviria.com AR 92739

No copies, transmissions, reproductions, or electronic manipulation of any portion of these drawings in whole or in part are to be made without the express written permission of gaviria architects. All designs indicated in these drawings are property of gaviria architects. All copyrights reserved (c) 2021.

DESIGN REVIEW BOARD FINAL SUBMITTAL  
5 TOWNHOUSES - 7300 TROUVILLE ESPLANADE,  
MIAMI BEACH FL 33141

**YARD SECTION DRAWINGS**

DATE:  
09/07/2021

**A3-03**





**gaviria architects**

9427 Fountainbleau Blvd. #206 Miami, FL 33172  
T: 954.6100148 / 305.9056839  
www.j-gaviria.com AR 92739

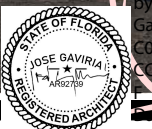
No copies, transmissions, reproductions, or electronic manipulation of any portion of these drawings in whole or in part are to be made without the express written permission of gaviria architects. All designs indicated in these drawings are property of gaviria architects. All copyrights reserved (c) 2021.

DESIGN REVIEW BOARD FINAL SUBMITTAL  
5 TOWNHOUSES - 7300 TROUVILLE ESPLANADE,  
MIAMI BEACH FL 33141

EXTERIOR RENDER

DATE:  
09/07/2021

A4-01



Digitally signed  
by Jose A.  
Gaviria:A01410  
C00000177EFC  
CCE8C0001412  
2021.09.07  
09:38:33 -05'00'





Digitally signed  
by Jose A  
Gaviria:A01410  
C00000177EFC  
CCE8C0001612  
Date: 09.07  
09:38:56 -05'00'

**gaviria architects**

9427 Fountainbleau Blvd. #206 Miami, FL 33172  
T: 954.6100148 / 305.9056839  
www.j-gaviria.com AR 92739

No copies, transmissions, reproductions, or electronic manipulation of any portion of these drawings in whole or in part are to be made without the express written permission of gaviria architects. All designs indicated in these drawings are property of gaviria architects. All copyrights reserved (c) 2021.

DESIGN REVIEW BOARD FINAL SUBMITTAL  
5 TOWNHOUSES - 7300 TROUVILLE ESPLANADE,  
MIAMI BEACH FL 33141

EXTERIOR RENDER

DATE:  
09/07/2021

A4-02





**gaviria architects**

9427 Fountainbleau Blvd. #206 Miami, FL 33172  
T: 954.6100148 / 305.9056839  
www.j-gaviria.com AR 92739

No copies, transmissions, reproductions, or electronic manipulation of any portion of these drawings in whole or in part are to be made without the express written permission of gaviria architects. All designs indicated in these drawings are property of gaviria architects. All copyrights reserved (c) 2021.

DESIGN REVIEW BOARD FINAL SUBMITTAL  
5 TOWNHOUSES - 7300 TROUVILLE ESPLANADE,  
MIAMI BEACH FL 33141

EXTERIOR RENDER

DATE:  
09/07/2021

A4-03



Digitally signed  
by Jose A.  
Gaviria;A01410  
C0000017EFC  
CCE8C0001612  
Date:  
2021.09.07  
09:39:17 -05'00'





Digitally signed  
by Jose A.  
Gaviria:A01410  
C00000177EFC  
CE8C0001612

09.07  
09:39:39 -05'00'

**gaviria architects**

9427 Fountainbleau Blvd. #206 Miami, FL 33172  
T: 954.6100148 / 305.9056839  
www.j-gaviria.com AR 92739

No copies, transmissions, reproductions, or electronic manipulation of any portion of these drawings in whole or in part are to be made without the express written permission of gaviria architects. All designs indicated in these drawings are property of gaviria architects. All copyrights reserved (c) 2021.

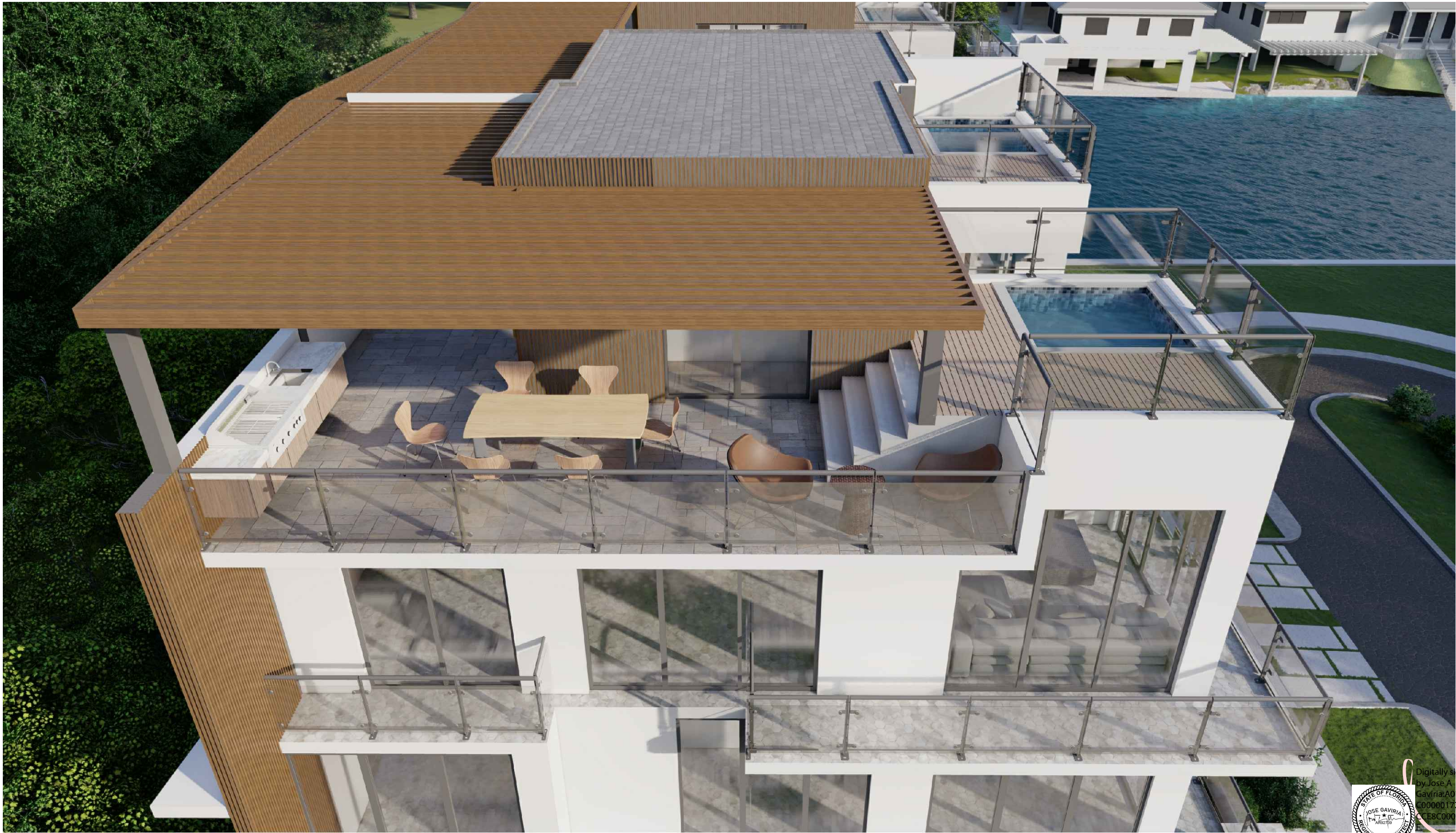
DESIGN REVIEW BOARD FINAL SUBMITTAL  
5 TOWNHOUSES - 7300 TROUVILLE ESPLANADE,  
MIAMI BEACH FL 33141

EXTERIOR RENDER

DATE:  
09/07/2021

A4-04





**gaviria architects**

9427 Fountainbleau Blvd. #206 Miami, FL 33172  
T: 954.6100148 / 305.9056839  
www.j-gaviria.com AR 92739

No copies, transmissions, reproductions, or electronic manipulation of any portion of these drawings in whole or in part are to be made without the express written permission of gaviria architects. All designs indicated in these drawings are property of gaviria architects. All copyrights reserved (c) 2021.

DESIGN REVIEW BOARD FINAL SUBMITTAL  
5 TOWNHOUSES - 7300 TROUVILLE ESPLANADE,  
MIAMI BEACH FL 33141

EXTERIOR RENDER

DATE:  
09/07/2021

A4-05



Digitally signed  
by Jose A  
Gaviria:A01410  
C00000177EFC  
CCE8C0001612  
2021.09.07  
09:39:58 -05'00'





Digitally signed by Jose A  
Gaviria.A01410C00000177  
EFCCCE8C0001612F  
Date: 2021.09.07 09:40:24  
-05'00'

**gaviria architects**

9427 Fountainbleau Blvd. #206 Miami, FL 33172  
T: 954.6100148 / 305.9056839  
www.j-gaviria.com AR 92739

No copies, transmissions, reproductions, or electronic manipulation of any portion of these drawings in whole or in part are to be made without the express written permission of gaviria architects. All designs indicated in these drawings are property of gaviria architects. All copyrights reserved (c) 2021.

DESIGN REVIEW BOARD FINAL SUBMITTAL  
5 TOWNHOUSES - 7300 TROUVILLE ESPLANADE,  
MIAMI BEACH FL 33141

EXTERIOR RENDER

DATE:  
09/07/2021

A4-06





**gaviria architects**

9427 Fountainbleau Blvd. #206 Miami , FL 33172  
T: 954.6100148 / 305.9056839  
www.j-gaviria.com AR 92739

No copies, transmissions, reproductions, or electronic manipulation of any portion of these drawings in whole or in part are to be made without the express written permission of gaviria architects. All designs indicated in these drawings are property of gaviria architects. All copyrights reserved (c) 2021.

DESIGN REVIEW BOARD FINAL SUBMITTAL  
5 TOWNHOUSES - 7300 TROUVILLE ESPLANADE,  
MIAMI BEACH FL 33141

EXTERIOR RENDER

DATE:  
09/07/2021

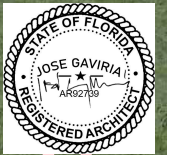
A4-07



Digitally signed by Jose A  
Gaviria: A01410C00000177E  
5C7C18C00016125

Date: 2021.09.07 09:40:48  
-05'00'





Digitally signed by Jose A  
Gaviria:A01410C00009177E

Date: 2021.09.07 09:41:11  
-05'00'

**gaviria architects**

9427 Fountainbleau Blvd. #206 Miami, FL 33172  
T: 954.6100148 / 305.9056839  
www.j-gaviria.com AR 92739

No copies, transmissions, reproductions, or electronic manipulation of any portion of these drawings in whole or in part are to be made without the express written permission of gaviria architects. All designs indicated in these drawings are property of gaviria architects. All copyrights reserved (c) 2021.

DESIGN REVIEW BOARD FINAL SUBMITTAL  
5 TOWNHOUSES - 7300 TROUVILLE ESPLANADE,  
MIAMI BEACH FL 33141

EXTERIOR RENDER

DATE:  
09/07/2021

A4-08