

Revisions		
#	Description	Date
5	Revision 5	02-16-18
6	Revision 6	04-03-18
7	Rev-7 Responses to Planning Comments	04-27-18
8	Revision 8	07-03-18
10	Revision 10	07-12-19

1. CONTRACTOR SHALL SUBMIT SAMPLES OF MATERIAL FOR APPROVAL BY LANDSCAPE ARCHITECT, PRIOR TO PROCUREMENT, FABRICATION, AND INSTALLATION.

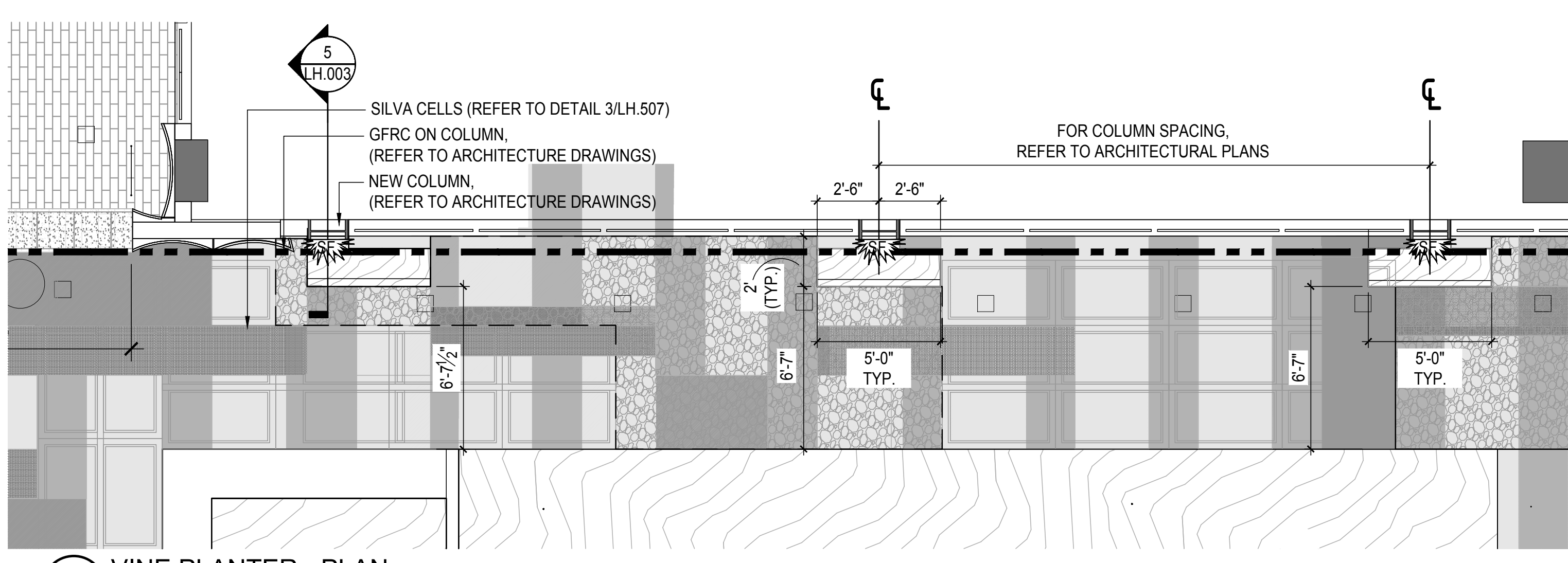
2. CONTRACTOR SHALL PROVIDE DETAILED SHOP DRAWINGS OF THE ENTIRE SYSTEM, INCLUDING EVERY PIECE, CONNECTION, AND CONDITION, FOR APPROVAL BY THE LANDSCAPE ARCHITECT, PRIOR TO PROCUREMENT, FABRICATION, AND INSTALLATION. CONTRACTOR SHALL FIELD VERIFY AS BUILT DIMENSIONS, AND PROVIDE DETAILED ENGINEERED LAYOUT DRAWINGS FOR APPROVAL BY LANDSCAPE ARCHITECT, INCLUDING ALL CONNECTIONS AND COMPONENTS.

3. CONTRACTOR SHALL PROVIDE AN ON-SITE MOCK-UP FOR APPROVAL BY THE LANDSCAPE ARCHITECT PRIOR TO INSTALLATION. MOCK-UPS SHALL BE RETAINED FOR THE LIFE OF THE PROJECT TO ENSURE COMPLIANCE WITH APPROVED CONSTRUCTION. MOCK-UPS SHALL BE PROVIDED WELL IN ADVANCE OF INSTALLATION (4 WEEKS) AND SHALL ALLOW FOR MULTIPLE ITERATIONS UNTIL AN APPROVED VERSION IS ACKNOWLEDGED BY THE LANDSCAPE ARCHITECT. CONTRACTOR SHALL SUBMIT PRODUCT DATA DEMONSTRATING COMPLIANCE WITH SPECIFICATIONS, PRIOR TO PROCUREMENT, FABRICATION, AND INSTALLATION.

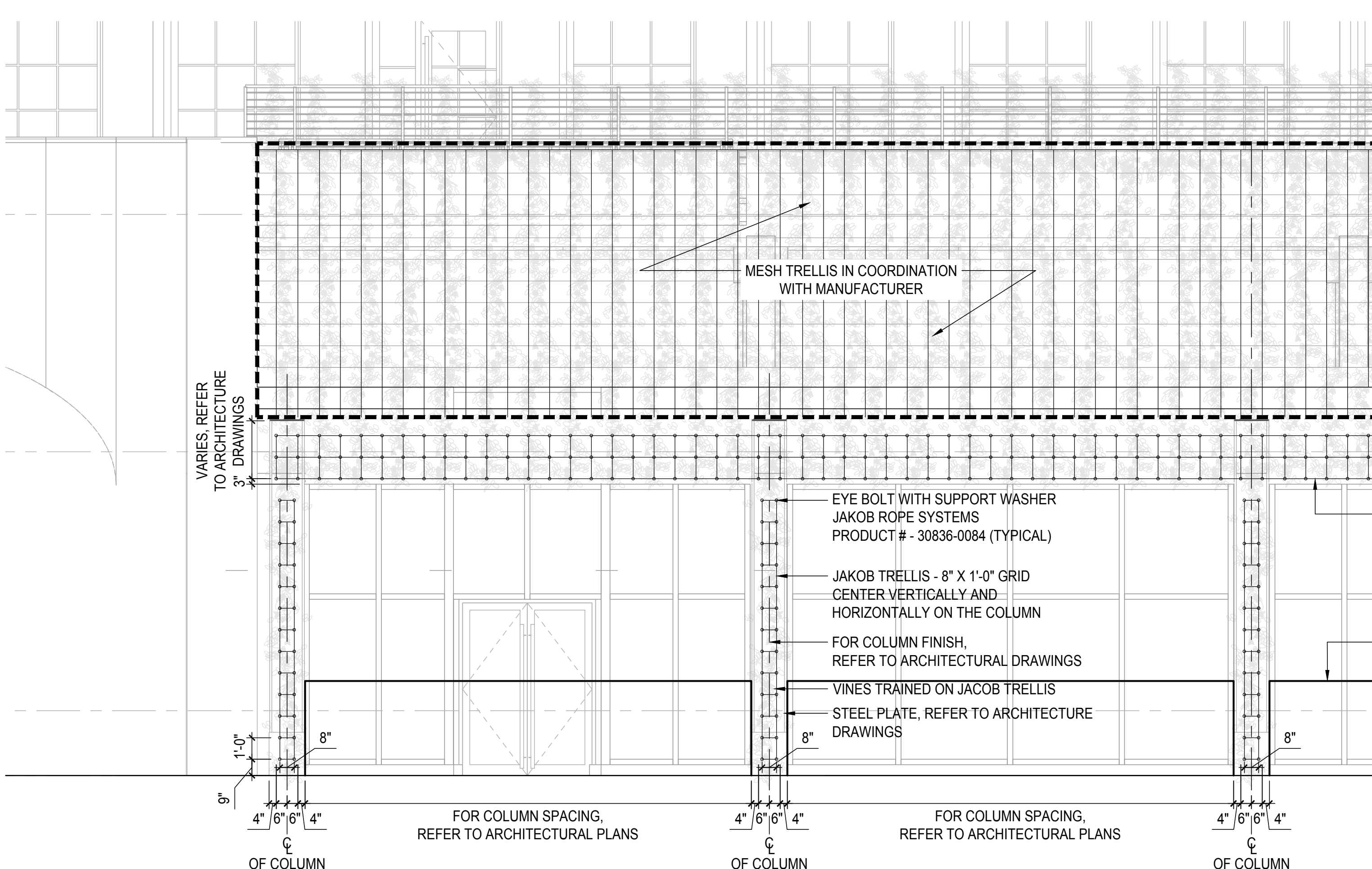
NON-HISTORIC FACADE
PLANTING DETAILS

14040

LH.509

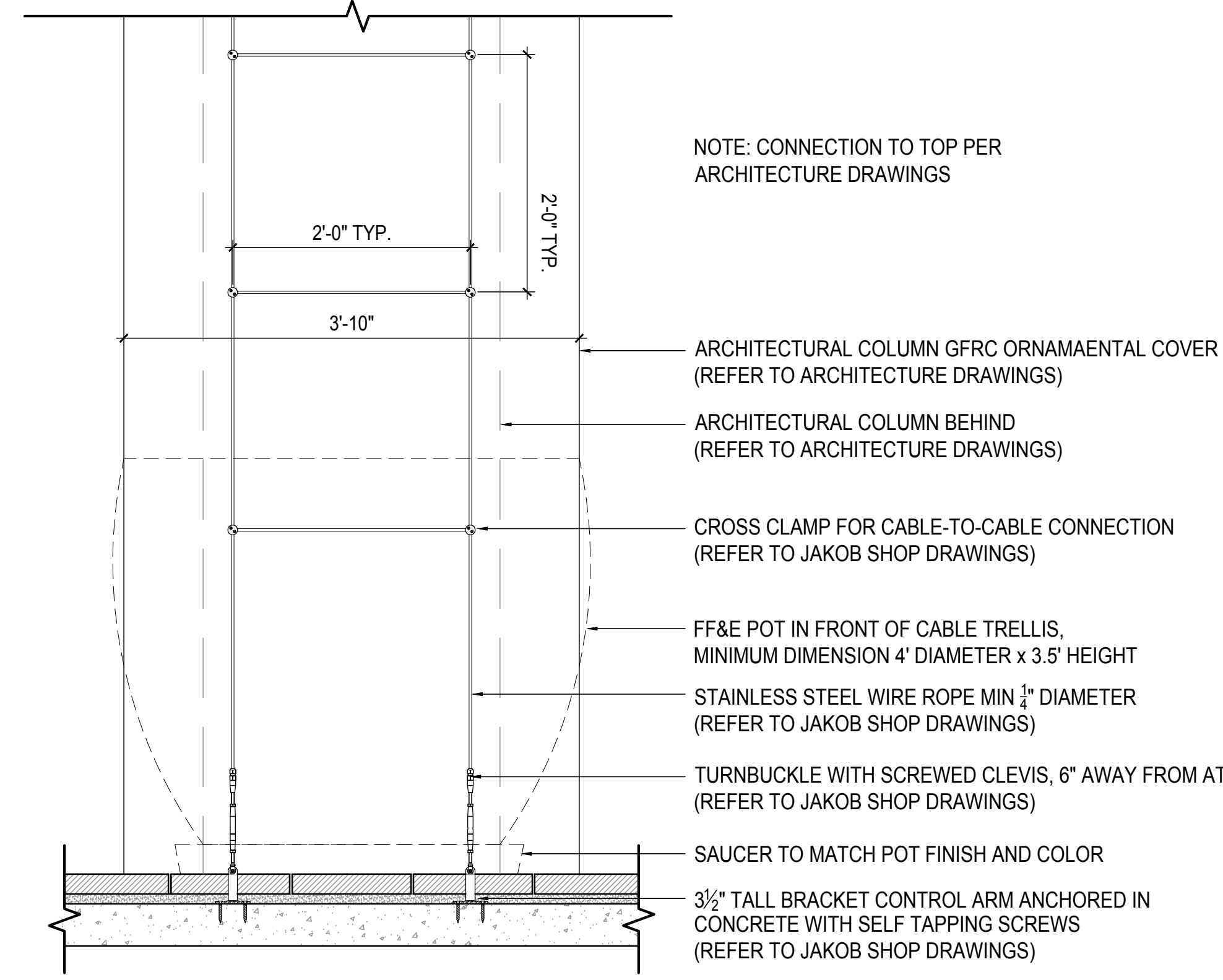


1 VINE PLANTER - PLAN
Scale: 1/4" = 1'-0"

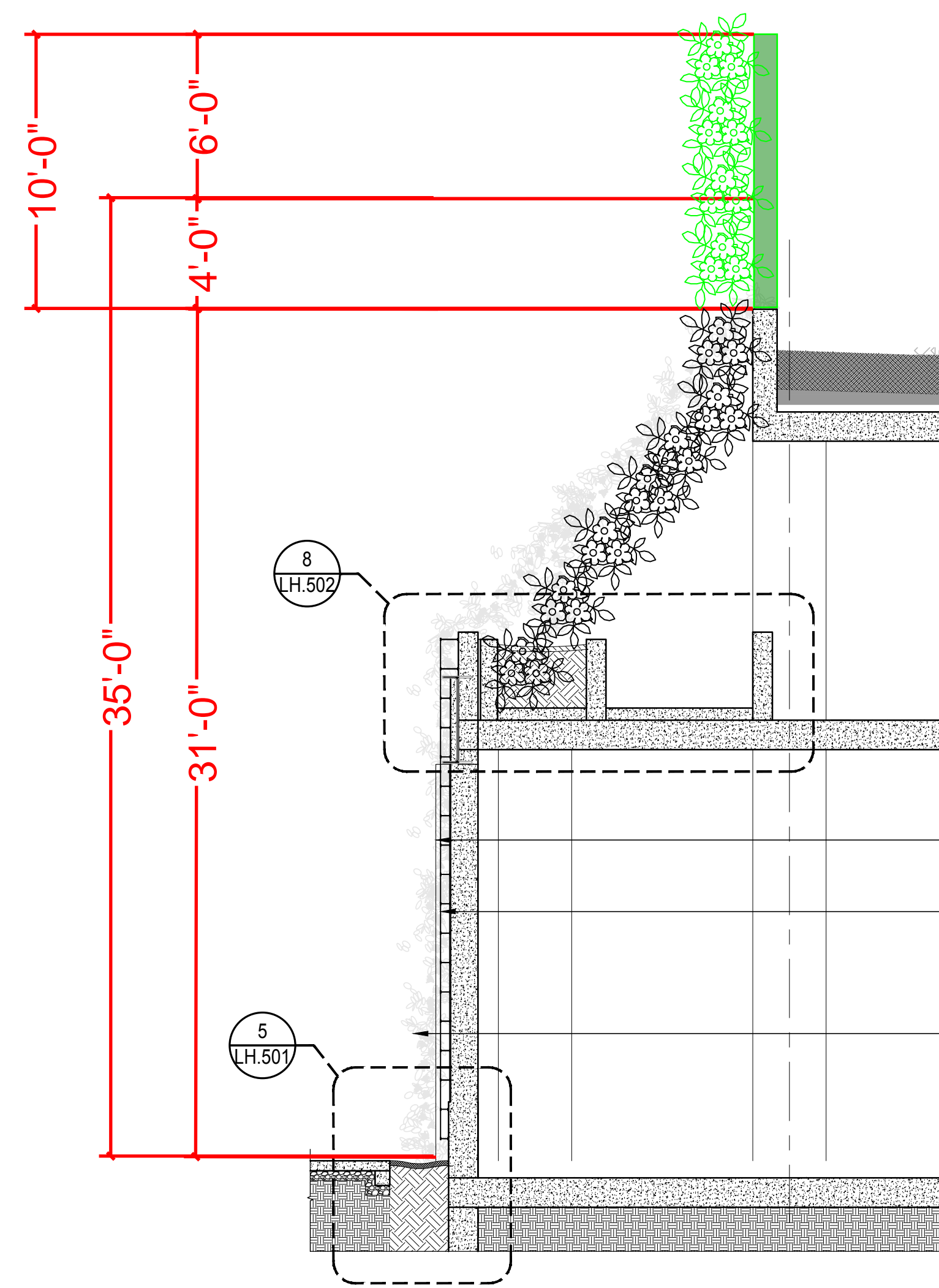


3 NON-HISTORIC FACADE - ELEVATION
Scale: 1/4" = 1'-0"

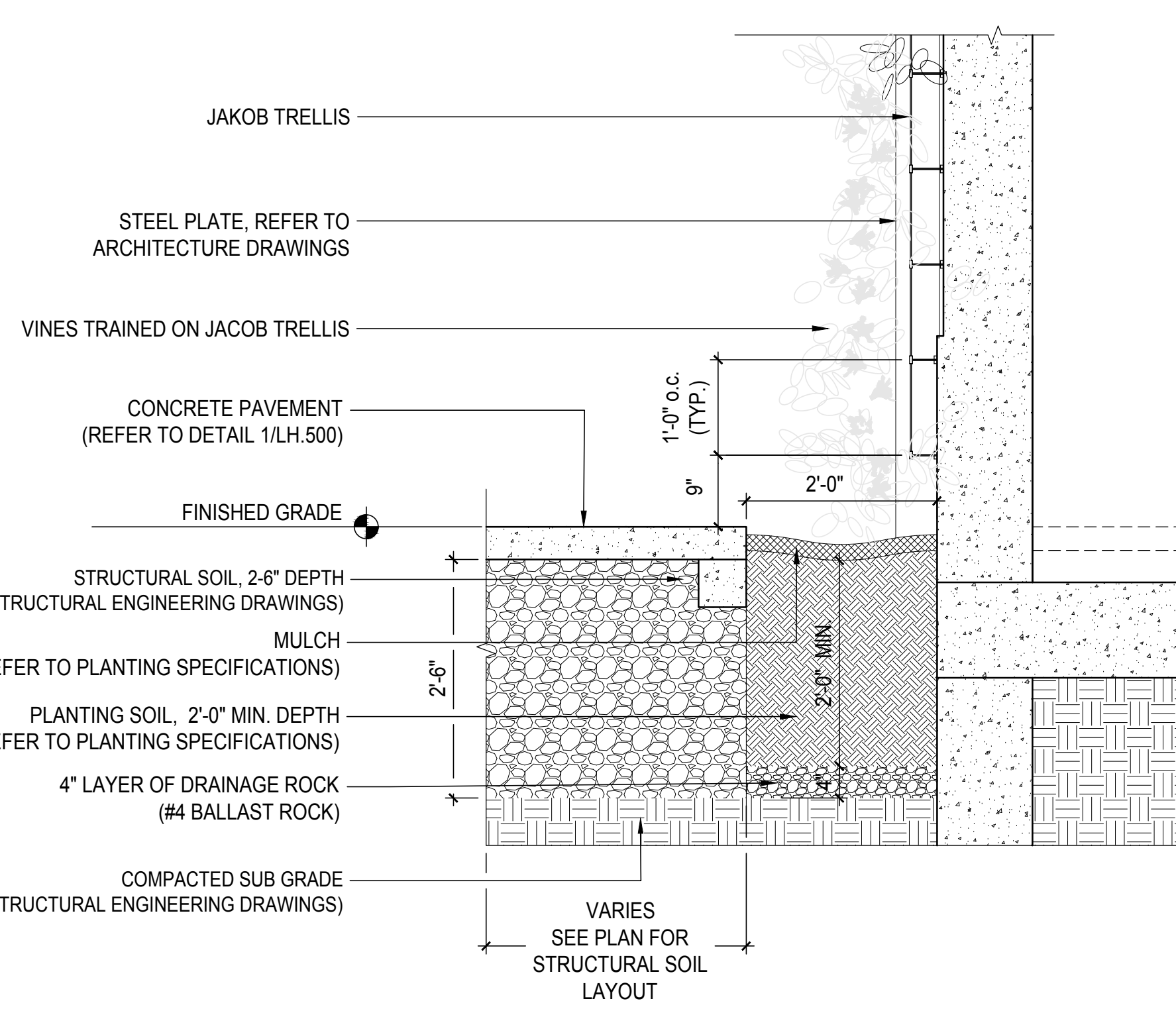
- NOTES:
1. CONTRACTOR SHALL SUBMIT SAMPLES OF MATERIAL FOR APPROVAL BY LANDSCAPE ARCHITECT, PRIOR TO PROCUREMENT, FABRICATION, AND INSTALLATION.
 2. CONTRACTOR SHALL PROVIDE DETAILED SHOP DRAWINGS OF THE ENTIRE SYSTEM, INCLUDING EVERY PIECE, CONNECTION, AND CONDITION, FOR APPROVAL BY THE LANDSCAPE ARCHITECT, PRIOR TO PROCUREMENT, FABRICATION, AND INSTALLATION. CONTRACTOR SHALL FIELD VERIFY AS BUILT DIMENSIONS, AND PROVIDE DETAILED ENGINEERED LAYOUT DRAWINGS FOR APPROVAL BY LANDSCAPE ARCHITECT, INCLUDING ALL CONNECTIONS AND COMPONENTS.
 3. CONTRACTOR SHALL PROVIDE AN ON-SITE MOCK-UP FOR APPROVAL BY THE LANDSCAPE ARCHITECT PRIOR TO INSTALLATION. MOCK-UPS SHALL BE RETAINED FOR THE LIFE OF THE PROJECT TO ENSURE COMPLIANCE WITH APPROVED CONSTRUCTION. MOCK-UPS SHALL BE PROVIDED WELL IN ADVANCE OF INSTALLATION (4 WEEKS) AND SHALL ALLOW FOR MULTIPLE ITERATIONS UNTIL AN APPROVED VERSION IS ACKNOWLEDGED BY THE LANDSCAPE ARCHITECT.
 4. CONTRACTOR SHALL SUBMIT PRODUCT DATA DEMONSTRATING COMPLIANCE WITH SPECIFICATIONS, PRIOR TO PROCUREMENT, FABRICATION, AND INSTALLATION.



6 BREEZEWAY VINE CABLE ELEVATION
Scale: 1" = 1'-0"



4 VINE PLANTER - SECTION
Scale: 1/4" = 1'-0"



5 VINE PLANTER - ENLARGEMENT
Scale: 3/4"=1'-0"

Proposed