

317 Coconut Lane

MapSatellite



Legend (14)

- Coconut Palm (9)
- Seagrape (1)
- Mango (1)
- Frangipani (1)
- Cabbage Palmetto (1)
- Bird Of Paradise (1)

Google

Keyboard shortcuts | Map data ©2021 Imagery ©2021 , Maxar Technologies | Terms of Use

+

-



317 Coconut Lane

MapSatellite



Legend (14)

- Coconut Palm (9)
- Seagrape (1)
- Mango (1)
- Frangipani (1)
- Cabbage Palmetto (1)
- Bird Of Paradise (1)

 Google

Keyboard shortcuts

Map data ©2021 Imagery ©2021 , Maxar Technologies

Terms of Use

+

−



#	Species	Health	Objective
1	 <i>Strelitzia reginae</i> Bird Of Paradise 16'-30'	60% - Fair	Remove tree not part of landscape plan no mitigation.
2	 <i>Mangifera indica</i> Mango 7"-12" 16'-30'	40% - Poor	REmove tree trunk damage from deck and not part of landscape plan no mitigation.
3	 <i>Cocos nucifera</i> Coconut Palm 1"-6" 16'-30'	90% - Very Good	Remove palm not part of the landscape plan no mitigation
4	 <i>Cocos nucifera</i> Coconut Palm 1"-6" 16'-30'	90% - Very Good	Remvoe tree not part of landscape plan no mitigation
5	 <i>Cocos nucifera</i> Coconut Palm 1"-6" 16'-30'	90% - Very Good	Remove tree not part of landscape plan no mitigation
6	 <i>Cocos nucifera</i> Coconut Palm 1"-6" 16'-30'	90% - Very Good	Remove tree not part of landscape plan no mitigation
7	 <i>Coccoloba uvifera</i> Seagrape 7"-12" 16'-30'	80% - Good	Tree to remain, tree protection for tree.
8	 <i>Cocos nucifera</i> Coconut Palm 1"-6" 16'-30'	80% - Good	Remove tree not part of the landscape plan no mitigation.
9	 <i>Cocos nucifera</i> Coconut Palm 1"-6" 16'-30'	80% - Good	Remove tree not part of landscape plan no mitigation.
10	 <i>Cocos nucifera</i> Coconut Palm 1"-6" 16'-30'	80% - Good	Remoe tree not part of landscape plan no mitigation.
11	 <i>Cocos nucifera</i> Coconut Palm 1"-6" 16'-30'	80% - Good	Remove tree not part of landscape plan no mitigation.
12	 <i>Cocos nucifera</i> Coconut Palm 1"-6" 16'-30'	80% - Good	Remove tree not part of landscape plan no mitigation.
13	 <i>Sabal palmetto</i> Cabbage Palmetto		Remove tree not part of the landscape plan no mitigation.
14	 <i>Plumeria rubra</i> Frangipani 7"-12" 16'-30'	40% - Poor	Removal of tree, it is growing through the fence and not part og the landscape plan.

Joshua Eibeschtz
ISA Certified Arborist FL-5603A
ISA Tree Risk Assessment Qualified

697 SW 9th Terrace
Pompano Beach, FL 33069
(954)788-4000
www.sherlocktree.com



317 Coconut Lane



October 25, 2021

Strelitzia reginae ID# 1
Bird Of Paradise Tag# 1
Height: 16'-30'
Health: 60% - Fair



October 25, 2021

Strelitzia reginae ID# 1
Bird Of Paradise Tag# 1
Height: 16'-30'
Health: 60% - Fair



October 25, 2021

Mangifera indica ID# 2
Mango Tag# 2
Height: 16'-30'
DBH: 7"-12"
Health: 40% - Poor



Remove tree not part of landscape plan no mitigation.
Hardscape Damage: Yes



Remove tree not part of landscape plan no mitigation.
Hardscape Damage: Yes



REmove tree trunk damage from deck and not part of landscape plan no mitigation.
Hardscape Damage: Yes
Damage to trunk from wooden deck.

317 Coconut Lane



October 25, 2021

Mangifera indica ID# 2
Mango Tag# 2
Height: 16'-30' DBH: 7"-12"
Health: 40% - Poor



REmove tree trunk damage from deck and not part of landscape plan no mitigation.
Hardscape Damage: Yes
Damage to trunk from wooden deck.

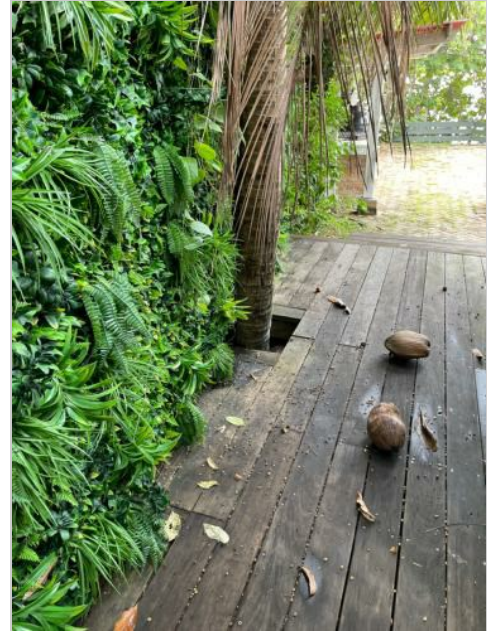


October 25, 2021

Cocos nucifera ID# 3
Coconut Palm Tag# 3
Height: 16'-30' DBH: 1"-6"
Health: 90% - Very Good



Remove palm not part of the landscape plan no mitigation



October 25, 2021

Cocos nucifera ID# 3
Coconut Palm Tag# 3
Height: 16'-30' DBH: 1"-6"
Health: 90% - Very Good



Remove palm not part of the landscape plan no mitigation

317 Coconut Lane



October 25, 2021

Cocos nucifera ID# 4
Coconut Palm Tag# 4
Height: 16'-30' DBH: 1"-6"
Health: 90% - Very Good



October 25, 2021

Cocos nucifera ID# 5
Coconut Palm Tag# 5
Height: 16'-30' DBH: 1"-6"
Health: 90% - Very Good



October 25, 2021

Coccoloba uvifera ID# 7
Seagrape Tag# 7
Height: 16'-30' DBH: 7"-12"
Health: 80% - Good



Google Earth / NES / Airbus, Maxar Technologies, Sanborn, U.S. Geological Survey
Remove tree not part of landscape plan no mitigation



Google Earth / NES / Airbus, Maxar Technologies, Sanborn, U.S. Geological Survey
Remove tree not part of landscape plan no mitigation



Google Earth / NES / Airbus, Maxar Technologies, Sanborn, U.S. Geological Survey
Tree to remain, tree protection for tree.
Hardscape Damage: Yes

317 Coconut Lane



October 25, 2021

Coccoloba uvifera ID# 7
Seagrape Tag# 7
Height: 16'-30' DBH: 7"-12"
Health: 80% - Good



October 25, 2021

Cocos nucifera ID# 8
Coconut Palm Tag# 8
Height: 16'-30' DBH: 1"-6"
Health: 80% - Good

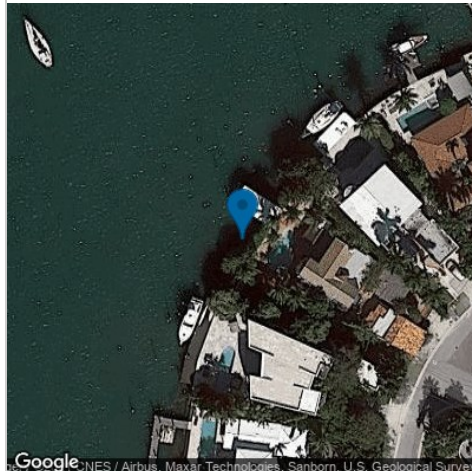


October 25, 2021

Cocos nucifera ID# 9
Coconut Palm Tag# 9
Height: 16'-30' DBH: 1"-6"
Health: 80% - Good



Google Earth / NES / Airbus, Maxar Technologies, Sanborn, U.S. Geological Survey
Tree to remain, tree protection for tree.
Hardscape Damage: Yes



Google Earth / NES / Airbus, Maxar Technologies, Sanborn, U.S. Geological Survey
Remove tree not part of the landscape plan no mitigation.



Google Earth / NES / Airbus, Maxar Technologies, Sanborn, U.S. Geological Survey
Remove tree not part of landscape plan no mitigation.

317 Coconut Lane



October 25, 2021

Cocos nucifera ID# 10
Coconut Palm Tag# 10
Height: 16'-30' DBH: 1"-6"
Health: 80% - Good



October 25, 2021

Cocos nucifera ID# 11
Coconut Palm Tag# 11
Height: 16'-30' DBH: 1"-6"
Health: 80% - Good



October 25, 2021

Cocos nucifera ID# 12
Coconut Palm Tag# 12
Height: 16'-30' DBH: 1"-6"
Health: 80% - Good



Google Earth / NES / Airbus, Maxar Technologies, Sanborn, U.S. Geological Survey
Remove tree not part of landscape plan no mitigation.



Google Earth / NES / Airbus, Maxar Technologies, Sanborn, U.S. Geological Survey
Remove tree not part of landscape plan no mitigation.



Google Earth / NES / Airbus, Maxar Technologies, Sanborn, U.S. Geological Survey
Remove tree not part of landscape plan no mitigation.

317 Coconut Lane



October 25, 2021

Sabal palmetto ID# 13
Cabbage Palmetto Tag# 13



October 25, 2021

Plumeria rubra ID# 14
Frangipani Tag# 14
Height: 16'-30' DBH: 7"-12"
Health: 40% - Poor



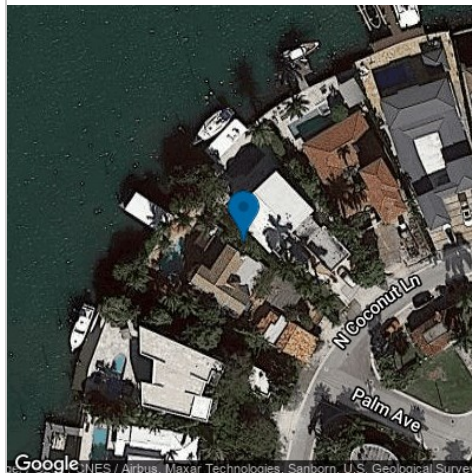
October 25, 2021

Plumeria rubra ID# 14
Frangipani Tag# 14
Height: 16'-30' DBH: 7"-12"
Health: 40% - Poor



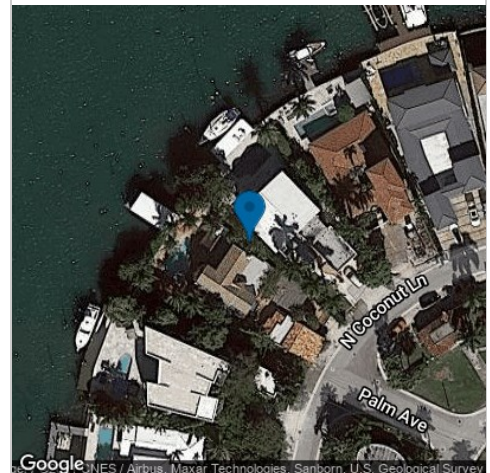
Google Earth / JNES / Airbus, Maxar Technologies, Sanborn, U.S. Geological Survey

Remove tree not part of the landscape plan no mitigation.



Google Earth / JNES / Airbus, Maxar Technologies, Sanborn, U.S. Geological Survey

Removal of tree, it is growing through the fence and not part of the landscape plan.
Hardscape Damage: Yes



Google Earth / JNES / Airbus, Maxar Technologies, Sanborn, U.S. Geological Survey

Removal of tree, it is growing through the fence and not part of the landscape plan.
Hardscape Damage: Yes