

228+302 W. Dilido Drive Miami Beach, FL 33139

# DILIDO ISLAND RESIDENCE

Revised DRB Final Submittal 11/08/2021

**Prepared for:**  
228 W Dilido VG, LLC  
c/o Alan Caren  
228 W Dilido Drive  
Miami Beach, FL 33139

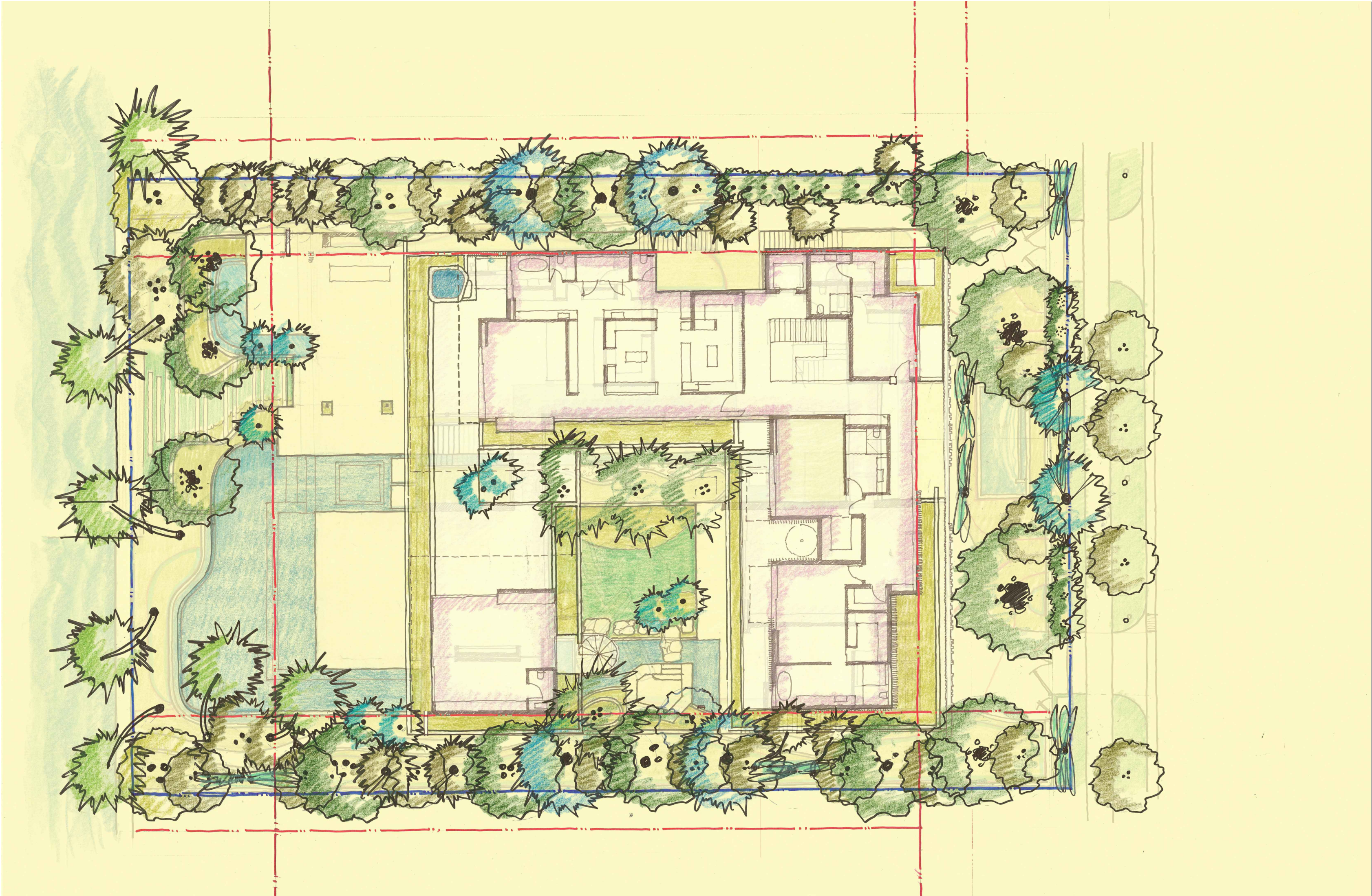
**Prepared by:**

**jungles**  
LANDSCAPE ARCHITECTURE

Raymond Jungles, Inc.  
2964 Aviation Ave  
Miami, FL 33133  
Ph: 305-858-6777  
www.raymondjungles.com

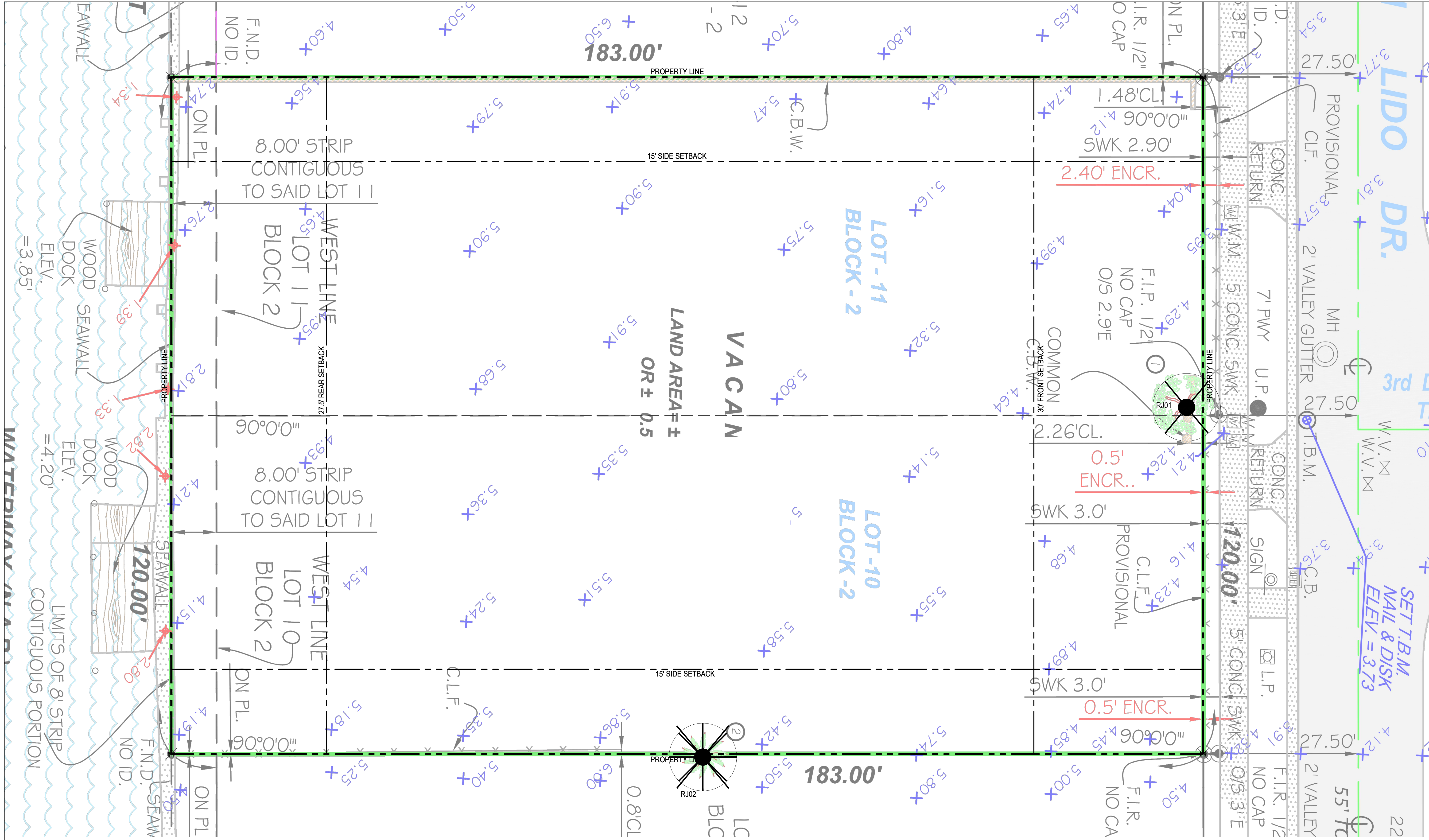
**Consultants:**

Architect of Record  
Thamann Architecture + Design  
1853 SW 24th Ter.  
Miami, FL 33145  
Ph: 859-394-3468  
www.thamannarchitecture.com



Drawing List:	
Sheet Number	Sheet Title
GI-000	Cover
LR.100	Tree Disposition Plan
LR.200	Tree Disposition Schedule
LR.201	Tree Disposition Notes
LH.100	Hardscape Plan - Ground Floor
LH.101	Hardscape Plan - First Floor
LH.390	Elevations - Prior Submittal
LH.391	Elevations - Prior Submittal
LH.400	Elevations
LH.401	Elevations
LH.450	Sections
LG.100	Grading and Fence Height Plan
LP.101	Canopy Plan - Ground Floor
LP.200	Understory Plan- Ground Floor
LP.201	Understory Plan - First Floor
LP.202	Understory Plan - Second Floor
LP.300	Planting Schedule
LP.400	Planting Notes
LP.401	Planting Details and Specifications





**LEGEND**

PROPERTY LINE	EXISTING TO REMAIN	EXISTING TO BE RELOCATED	EXISTING TO BE REMOVED	EXISTING OFF-SITE TO REMAIN
SETBACK	TREE	N/A	XXX	XXX
ROOF OVERHANG				
TREE PROTECTION BARRIER				
TREE PROTECTION ZONE				
	PALM	N/A	XXX	OS-XXX

**GENERAL NOTES:**

- TREE SURVEY BASED ON ALL AVAILABLE INFORMATION. CONTRACTOR TO REPORT ALL DISCREPANCIES TO LANDSCAPE ARCHITECT FOR REVIEW PRIOR TO CONSTRUCTION. RAYMOND JUNGLES, INC. (RJ) MAY ASSIST WITH THE TAGGING OF ALL TREES IN THE FIELD.
- ALL TREES TO BE RELOCATED SHALL BE ROOT PRUNED A MINIMUM OF 60 DAYS PRIOR TO THEIR RELOCATION AND SHOULD BE SETUP ON A CONTROLLED IRRIGATION SYSTEM DURING THIS TIME. RJ WILL ALSO OVERSEE ANY RECOMMENDATIONS FOR FURTHER MODIFICATIONS TO ANY EXISTING MATERIAL.
- ALL PITS TO BE FILLED THE SAME DAY OF REMOVAL OF TREES. RESTORE SURFACE WITH SOD OR MULCH TO MATCH EXISTING CONDITIONS.
- CONTRACTOR SHALL VERIFY ALL EXISTING ABOVE AND UNDERGROUND UTILITIES 48 HOURS PRIOR TO ANY ON SITE EXCAVATION.
- REVIEW ADDITIONAL NOTES AND DETAILS ON SHEET LR.201 FOR RELOCATED MATERIAL.
- SEE LR.200 FOR TREE DISPOSITION SCHEDULE.
- REFER TO LANDSCAPE PLANS FOR FINAL LOCATION OF RELOCATED TREES.
- ALL WORK AND/OR IMPROVEMENTS WITHIN THE RIGHT-OF-WAY, INCLUDING LANDSCAPING AND IRRIGATION, REQUIRES A SEPARATE CITY OF MIAMI BEACH PUBLIC WORKS DEPARTMENT RIGHT-OF-WAY CONSTRUCTION PERMIT.

0 4' 8' 16'

SCALE: 1/8" = 1'-0"

N

DILILDO ISLAND RESIDENCE  
228+302 W. Dilido Drive  
Miami Beach, FL 33139

REVISIONS:

1	11/08/2021	Revised DBR Final Submittal
---	------------	-----------------------------

No. Date Description

SEAL: LANDSCAPE ARCHITECT: Raymond Jungles

STATE OF FLORIDA  
RAYMOND JUNGLES  
LANDSCAPE ARCHITECT  
LA0000856

SHEET TITLE:  
TREE DISPOSITION PLAN

DBR FINAL SUBMITTAL  
Drawn By: CB  
Checked By: GCH  
Date: 08-02-2021

SHEET NUMBER:  
LR.100







## 1. CONTRACTOR QUALIFICATIONS

- ## 2. CONTRACTOR REQUIREMENTS

- ### 3. ROOT PRUNING SPECIFICATIONS

### 3.1. GENERAL

- ### 3.2. TREES

- | CALIPER<br>(inches) | MIN. ROOTBALL<br>DIA. (feet) | CALIPER<br>(inches) | MIN. ROOTBALL<br>DIA. (feet) |
|---------------------|------------------------------|---------------------|------------------------------|
| 1 - 4               | 3                            | 12 - 14             | 8                            |
| 4 - 5               | 4                            | 15 - 17             | 10                           |
| 6 - 7               | 5                            | 18 - 24             | 12 - 15                      |
| 8 - 9               | 6                            | 25 - 30             | 15 - 25                      |
| 10 - 11             | 7                            | 30 +                | as needed                    |

- 3.2.3. WHENEVER POSSIBLE, ROOTBALLS MUST BE CIRCULAR IN SHAPE WITH AN EQUAL DISTANCE FROM THE TRUNK TO THE EDGE OF THE ROOTBALL ALL AROUND.
- 3.2.4. MINIMUM ROOTBALL DEPTH MUST BE 24"-36" FOR ALL TREES TO BE RELOCATED, WITH THE ACTUAL DEPTH TO BE DETERMINED ONLY AFTER A THOROUGH EXAMINATION OF ALL ROOTS DURING THE INITIAL ROOT INSPECTION AND BASED ON THE ABSENCE OF MAJOR ROOTS AT THE BOTTOM OF THE ROOTBALL. ROOTBALLS DEEPER THAN 36" MAY BE REQUIRED FOR LARGE SPECIMEN TREES, DEPENDING ON THE RELATIVE LOCATIONS AND DEPTHS OF THE MAJOR ROOTS AS OBSERVED DURING THE INITIAL ROOT INSPECTION.

- FOR THESE TREES, THE MINIMUM ROOT PRUNE TIMES DISCUSSED IN SECTIONS 3.2.5 AND 3.2.6 ABOVE MAY BE INSUFFICIENT. ONLY WHEN SUFFICIENT NEW ROOT GROWTH HAS TAKEN PLACE FOLLOWING AN EARLIER ROOT PRUNE CAN THE NEXT ROOT PRUNE BE DONE, AND ONLY WHEN SUFFICIENT NEW ROOT GROWTH HAS TAKEN PLACE FOLLOWING THE FINAL ROOT PRUNE MAY THE TREE BE RELOCATED (SEE SECTION 2.14 ABOVE FOR SPECIFICATIONS ON PHOTOGRAPHICALLY DOCUMENTING NEW ROOT GROWTH DURING THE ROOT PRUNE PROCESS).

- 3.3. PALMS
- 3.3.1. THE FOLLOWING TABLE LISTS MINIMUM ROOTBALL DIAMETERS FOR VARIOUS SPECIES OF PALMS BASED ON REAL-WORLD EXPERIENCE OF RELOCATION SPECIALISTS IN SOUTH FLORIDA:
- | <u>PALM SPECIES</u>                    | <u>ROOTBALL SPECIFICATIONS</u>        |
|--|---------------------------------------|
| SABAL / CABBAGE PALM                   | 36" diameter                          |
| QUEEN & FOXTAIL PALMS                  | 12" from trunk in all directions      |
| ROYAL & COCONUT PALMS                  | 18 - 24" from trunk in all directions |
| CANARY DATE PALM                       | 24" from trunk in all directions      |
| SLOW-GROWING PALMS<br>(see sec. 3.3.4) | 24" from trunk in all directions      |
- 3.3.2. PALM ROOTBALLS MUST BE A MINIMUM OF 24" DEEP. WHENEVER POSSIBLE, ROOTBALLS MUST BE CIRCULAR IN SHAPE WITH AN EQUAL DISTANCE FROM THE TRUNK TO THE EDGE OF THE ROOTBALL ALL AROUND...
- 3.3.3. AS A GENERAL RULE, MINIMUM ROOT PRUNE TIME FOR PALMS IS 6-8 WEEKS. THE FIRST ROOT PRUNE MUST BE ON TWO OPPOSING SIDES OF THE ROOTBALL, WITH THE SECOND ROOT PRUNE ON ONE OF THE OTHER TWO SIDES DONE A MINIMUM OF 3-4 WEEKS LATER, AND A THIRD ROOT PRUNE ON THE LAST SIDE DONE A MINIMUM OF 4-6 WEEKS AFTER THAT. THE SECOND AND THIRD ROOT PRUNES MAY ONLY BE DONE WHEN HEALTHY NEW ROOT GROWTH FROM EARLIER ROOT PRUNES IS EVIDENT (SEE SECTION 2.14 ABOVE FOR SPECIFICATIONS ON PHOTOGRAPHICALLY DOCUMENTING NEW ROOT GROWTH DURING THE ROOT PRUNE PROCESS). MORE TIME MAY BE NEEDED DURING THE COOLER MONTHS OF THE YEAR.
- 3.3.4. CERTAIN PALMS, IN PARTICULAR THOSE THAT ARE SLOW GROWING, REQUIRE LONGER ROOT PRUNING TIME. THESE INCLUDE, BUT ARE NOT LIMITED TO, THE FOLLOWING:
- ALL SPECIES OF ARCHONTOPHOENIX
  - ALL SPECIES OF CORYPHA
  - AMERICAN OIL PALMS (ALL SPECIES OF ATTALEA)
  - BISMARCK PALM (BISMARCKIA NOBILIS)
  - CUBAN & CARIBBEAN COPERNICIA
  - CUBAN BELLY PALM (GASTROCOCOCCUS CRISPA)
  - GINGERBREAD/DOLM PALMS (ALL SPECIES OF PHYPAENE)
  - PALMYRA PALMS (ALL SPECIES OF BORASSUS)
  - SATAKE PALM (SATAKENIA LIUKIUNENSIS)
  - SAW PALMETTO (SERENOA REPENS)
  - SILVER PALM (COCOOTHIRINAX ARGENTATA)
  - ZOMBIE PALM (ZOMBIA ANTILLARUM)

- FOR THESE PALMS, THE MINIMUM ROOT PRUNING TIME IS 4-6 MONTHS OR GREATER. ONLY WHEN SUFFICIENT NEW ROOT GROWTH HAS TAKEN PLACE FOLLOWING AN EARLIER ROOT PRUNE CAN THE NEXT ROOT PRUNE BE DONE, AND ONLY WHEN SUFFICIENT NEW ROOT GROWTH HAS TAKEN PLACE FOLLOWING THE FINAL ROOT PRUNE MAY THE TREE BE RELOCATED (SEE SECTION 2.14 ABOVE FOR SPECIFICATIONS ON PHOTOGRAPHICALLY DOCUMENTING NEW ROOT GROWTH DURING THE ROOT PRUNE PROCESS).

#### 4. CANOPY PRUNING SPECIFICATIONS

#### 4.1. TREES

- 4.1.1. PRIOR TO RELOCATION, THE CANOPY OF EACH TREE TO BE RELOCATED MUST BE SELECTIVELY PRUNED TO REMOVE CROSSING, DEAD, DISEASED, BROKEN, AND LOW-HANGING BRANCHES THAT MIGHT INTERFERE WITH CONSTRUCTION ACTIVITIES, OR THAT MAY INTERFERE OR RESTRICT STRAPPING OR LIFTING THE TREE DURING RELOCATION.
- 4.1.2. FOR TREES BEING RELOCATED ONSITE, THE CANOPY MAY BE SELECTIVELY THINNED AND REDUCED BY NO MORE THAN 1/3 OF THE OVERALL CANOPY MASS, AT THE DIRECTION OF THE LANDSCAPE ARCHITECT; HOWEVER, THE BASIC SHAPE, FORM, AND CHARACTER OF THE TREE MUST BE PRESERVED.
- 4.1.3. FOR TREES BEING RELOCATED OFFSITE, THE CANOPY MUST BE PRUNED, AT THE DIRECTION OF THE LANDSCAPE ARCHITECT, TO FIT ON THE TRAILER FOR TRANSPORT. EVERY EFFORT MUST BE MADE TO RETAIN AS MANY LARGE BRANCHES AS POSSIBLE AND TO PRESERVE AS MUCH OF THE SHAPE, FORM, AND CHARACTER OF THE TREE AS POSSIBLE TO THE WIDEST LOAD WIDTH ALLOWABLE BY THE FLORIDA DEPARTMENT OF TRANSPORTATION. CONTRACTOR MUST OBTAIN ALL NECESSARY PERMITS AND ESCORTS TO TRANSPORT WIDE LOADS, PER FLORIDA LAW.
- 4.1.4. ALL CANOPY PRUNING MUST BE CONDUCTED FOLLOWING ANSI A-300 TREE PRUNING STANDARDS AND THE BEST MANAGEMENT PRACTICES.
- 4.1.5. ALL DEBRIS GENERATED DURING CANOPY PRUNING MUST BE REMOVED OFFSITE AND DISPOSED AT AN APPROPRIATE LOCATION.

#### 4.2. PALMS

- 4.2.1. IT IS WELL KNOWN THAT SOME PALMS SURVIVE RELOCATION BETTER WHEN ALL OF THE LEAVES ARE REMOVED (E.G., CABBAGE PALM, *SABAL PALMETTO*), AND THAT OTHER PALMS BENEFIT FROM HAVING THEIR LEAVES CUT IN HALF DURING RELOCATION (E.G., COCONUT PALM, *COCOS NUCIFERA*). BOTH OF THESE HORTICULTURAL PRACTICES, WHILE TRUE, ARE ONLY APPLICABLE WHEN PALMS ARE NOT ROOT PRUNED. LEAVES DO NOT NEED TO BE CUT IN HALF OR REMOVED FROM PALMS THAT ARE ADEQUATELY ROOT PRUNED. ON OCCASION WHEN SUFFICIENT ROOT PRUNING TIME IS NOT AVAILABLE, PALMS TO BE RELOCATED MAY HAVE THEIR LEAVES CUT IN HALF OR REMOVED ENTIRELY AT THE DIRECTION OF THE LANDSCAPE ARCHITECT.
- 4.2.2. PALM LEAVES MUST BE TIED UP WITH 2-PLY BIODEGRADABLE TWINE PRIOR TO RELOCATION TO PREVENT MECHANICAL DAMAGE DURING THE RELOCATION PROCESS.
- 4.2.3. PALM TRUNKS SHALL ONLY BE "CLEANED UP" ACCORDING TO THE LANDSCAPE ARCHITECT'S SPECIFICATIONS SPECIFIC TO EACH PALM.

## 5. RELOCATION SPECIFICATIONS

## 5.1. GENERAL

- 5.1.2. LANDSCAPE CONTRACTOR TO FLAG ALL PROPOSED PLANT LOCATIONS FOR LANDSCAPE ARCHITECT'S APPROVAL PRIOR TO INSTALLATION. NOTIFY LANDSCAPE ARCHITECT A MINIMUM OF 15 DAYS PRIOR TO REVIEW.
- 5.1.2. ALL TREES AND PALMS TO BE RELOCATED MUST BE WATERED DAILY FOR AT LEAST 5 DAYS PRIOR TO ANY RELOCATION TO ENSURE THAT THEY ARE FULLY HYDRATED. EACH WATERING MUST THOROUGHLY SATURATE THE ROOTBALL TO ITS FULL DEPTH.
- 5.1.3. ALL ROOTBALLS MUST BE THOROUGHLY WATERED THEN TIGHTLY WIRE-WRAPPED (USING REDLINE HORSE WIRE OR EQUIVALENT) TO KEEP THE ENTIRE ROOTBALL INTACT DURING RELOCATION. TREES AND PALMS GROWING IN LIMESTONE MUST BE DUG AND RELOCATED WITH THE ROOTS ATTACHED TO A SECTION OF ROCK OR PART OF THE ROOTBALL, SUCH THAT THE ROOTS REMAIN INTACT. ROOTBALLS COMING FROM SAND OR SANDY SOIL MAY ALSO NEED TO BE BOXED PRIOR TO RELOCATION, AT THE DISCRETION OF THE LANDSCAPE ARCHITECT.
- 5.1.4. TREES AND PALMS BEING RELOCATED OFFSITE MUST HAVE THEIR ENTIRE ROOTBALLS THOROUGHLY AND TIGHTLY WRAPPED WITH PLASTIC SHRINK WRAP ON THE OUTSIDE OF THE WIRE WRAP, AND THE ENTIRE TREE OR PALM (INCLUDING CANOPY, TRUNK, AND ROOTBALL) MUST BE COVERED WITH A BREATHABLE TARP (E.G. SHADE CLOTH) DURING TRANSPORT.
- 5.1.5. NEW PLANTING PITS FOR RELOCATED TREES AND PALMS MUST BE PREPARED PRIOR TO LIFTING THE PALM OR TREE FROM ITS CURRENT LOCATION AND MUST BE AT LEAST 3-4 FEET WIDER THAN THE ROOTBALL AND THE SAME DEPTH AS THE ROOTBALL, SUCH THAT THE FINAL ELEVATION OF THE TOP OF THE ROOTBALL IS AT OR SLIGHTLY ABOVE (NO MORE THAN 2" HIGHER) FINAL GRADE.
- 5.1.6. TREES AND PALMS TO BE RELOCATED MUST BE LIFTED BY THE ROOTBALL ONLY, USING APPROPRIATELY SIZED (LENGTH AND STRENGTH) LIFTING STRAPS OR CHAINS. DURING LIFTING, THE TREE OR PALM MUST BE BALANCED IN A MORE-OR-LESS UPRIGHT POSITION, WITH THE STRAP ON THE TRUNK USED ONLY FOR BALANCING AND MANEUVERING THE TREE OR PALM INTO POSITION. NO CHAINS MAY BE USED AROUND OR AGAINST THE TRUNK AT ANY TIME. AT NO TIME SHALL 100% OF THE WEIGHT OF THE TREE OR PALM BE ON THE STRAP ATTACHED TO THE TRUNK. TRUNKS MUST BE HEAVILY PADDED WITH 30-60 LAYERS (DEPENDING ON SIZE AND WEIGHT) OF BURLAP BENEATH THE BALANCING STRAP.
- 5.1.7. TREES AND PALMS MUST BE LIFTED WITH A CRANE OR BACKHOE APPROPRIATELY SIZED FOR THE SIZE AND WEIGHT OF THE TREE OR PALM AND LIFTED OR CARRIED DIRECTLY TO THE FINAL INSTALL LOCATION OR TRANSPORT TRAILER.
- 5.1.8. ONCE LIFTING BEGINS, ALL CUT ROOTS UNDER OR AROUND THE ROOTBALL THAT MAY YET REMAIN MUST BE IMMEDIATELY SEVERED WITH HAND PRUNING TOOLS TO MINIMIZE TEARING AND ROOT DAMAGE.
- 5.1.9. AGRIFORM PLANTING TABLETS (OR APPROVED EQUIVALENT) MUST BE EVENLY DISTRIBUTED AROUND THE PERIMETER OF THE PLANTING PIT AT THE RATE OF 2 TABLETS PER 1" TRUNK CALIBER PRIOR TO BACKFILLING.
- 5.1.10. MYCORRHIZA (ROOTS® TRANSPLANT OR EQUIVALENT) MUST BE INCORPORATED INTO THE BACKFILL SOIL PRIOR TO BACKFILLING.
- 5.1.11. RELOCATED TREES AND PALMS MUST BE CENTERED IN THE PLANTING PIT, AND THE PIT BACKFILLED USING A 1:1 MIXTURE OF EXISTING SOIL AND 80:20 (DOT SAND/MULCH) SOIL MIX THOROUGHLY BLENDED TOGETHER. DO NOT USE MUDDY SOIL AS BACKFILL. (SEE 5.2.2 BELOW FOR SPECIAL CONDITIONS REGARDING DATE PALM BACKFILL SPECIFICATIONS.)
- 5.1.12. SMALL TREES AND PALMS MUST BE FIRMLY BRACED USING A MINIMUM OF FOUR 4" X 4" WOODEN BRACES ATTACHED TO 2" X 4" WOODEN BATTENS HELD IN PLACE WITH TWO STEEL BANDS. LARGER TREES MAY REQUIRE 6" X 6" WOODEN POSTS OR EVEN TELEPHONE POLES TO PROVIDE SUFFICIENT BRACING STRENGTH TO PREVENT TOPPLING DURING WIND EVENTS. A SUFFICIENT NUMBER OF BATTENS MUST BE STRATEGICALLY PLACED AROUND THE TRUNK SUCH THAT THE STEEL BANDS NEVER CONTACT THE TRUNK. NO BURLAP IS TO REMAIN UNDER THE WOODEN BATTENS ON TREES DURING BRACING, BUT SEVERAL LAYERS OF BURLAP SHOULD BE LEFT UNDER THE WOODEN BATTENS WHEN BRACING PALMS. NAILS SHALL NEVER BE DRIVEN DIRECTLY INTO THE TRUNK DURING BRACING. BRACING MUST REMAIN IN PLACE FOR A MINIMUM OF ONE YEAR.
- 5.1.13. A TREE RING WITH A MINIMUM HEIGHT OF 6" MUST BE CONSTRUCTED 6-12" OUTSIDE THE OUTERMOST EDGE OF THE ROOTBALL AND AROUND THE ENTIRE PERIMETER OF THE ROOTBALL TO DIRECT IRRIGATION WATER AND ANY SUPPLEMENTS THAT ARE ADDED DOWN INTO THE ROOTBALL DURING ROOT REGENERATION.
- 5.1.14. ONCE THE TREE IS CONSTRUCTED, A HIGH-PHOSPHORUS ROOT STIMULANT MUST BE LIBERALLY APPLIED TO THE SURFACE OF THE ROOTBALL AND THOROUGHLY WATERED IN.
- 5.1.15. ROOTBALLS MUST BE THOROUGHLY WATERED IN USING A HOSE AND A JOHNSON BAR INSERTED TO THE VERY BOTTOM OF THE ROOTBALL AND SWUNG BACK AND FORTH TO PREVENT FORMATION OF AIR POCKETS. THE JOHNSON BAR TECHNIQUE MUST BE REPEATED AT LEAST ONCE MORE WITHIN ONE WEEK AFTER RELOCATION, AND AGAIN IF ANY SIGNS OF STRESS BECOME APPARENT.
- 5.1.16. ORGANIC MULCH (MELALEUCA IS PREFERRED) MUST BE APPLIED WITHIN 48 HOURS OF RELOCATION AT A DEPTH OF 3-4" OVER THE ENTIRE TOP OF THE ROOTBALL FROM THE TREE RING TO WITHIN 6" OF THE TRUNK. MULCH MUST NOT BE APPLIED OR ALLOWED TO ACCUMULATE DIRECTLY AGAINST THE TRUNK.
- 5.1.17. PITS FROM WHICH THE RELOCATED TREES AND PALMS WERE REMOVED MUST BE CLEANED OF ALL RESIDUAL ROOTS, STUMPS, AND PORTIONS THEREOF AND BACKFILLED WITH CLEAN FILL FLUSH WITH THE SURROUNDING GRADE.
- 5.1.18. RESTORE THE SURFACE WITH MATERIAL TO MATCH ADJACENT AREAS. MATERIAL TO BE APPROVED BY LANDSCAPE ARCHITECT. CONTRACTOR TO PROVIDE A MINIMUM OF ONE YEAR WARRANTY ON SETTLING AND PLANT MATERIAL FROM TIME OF SUBSTANTIAL COMPLETION.
- 5.2. SPECIAL CONDITIONS
- 5.2.1. MULTI-TRUNK TREES AND PALMS MUST BE RELOCATED AS ONE UNIT WITH A SINGLE ROOTBALL. PLANTING PITS FOR EDBLE DATE PALMS (*PHOENIX DACTYLIFERA*) MUST BE BACKFILLED WITH PURE DOT SILICA SAND.

## 6 MAINTENANCE SPECIFICATIONS

## 6.1. GENERAL

- 6.1.1. ALL RELOCATED TREES AND PALMS MUST BE MAINTAINED FOR ONE YEAR FROM THE DATE OF RELOCATION TO THEIR FINAL LOCATIONS.
- 6.1.2. CONTRACTOR MUST MAINTAIN ALL RELOCATED TREES AND PALMS FOR ONE FULL YEAR FROM THE DATE OF RELOCATION TO THE FINAL LOCATION.
- 6.1.3. WHENEVER POSSIBLE, EACH TREE AND PALM MUST BE WATERED BY A PERMANENT AUTOMATIC IRRIGATION SYSTEM FOLLOWING RELOCATION. EACH WATERING MUST THOROUGHLY SATURATE THE ROOTBALL TO ITS FULL DEPTH; THIS WILL REQUIRE 25-50 GALLONS OF WATER FOR SMALL TREES AND PALMS, DEPENDING ON ROOTBALL SIZE. WHILE LARGE TREES WILL REQUIRE A MINIMUM OF 10 GALLONS PER FOOT OF ROOTBALL DIAMETER (I.E., A 10' DIAMETER ROOTBALL WILL REQUIRE A MINIMUM OF 100 GALLONS PER WATERING EVENT), WATERING FREQUENCY MUST BE EVERY DAY FOR THE FIRST TWO WEEKS, EVERY OTHER DAY FOR THE NEXT THREE WEEKS, AND EVERY THIRD DAY FOR THE NEXT 6-8 WEEKS.
- 6.1.4. WHEN AN AUTOMATIC IRRIGATION SYSTEM IS NOT POSSIBLE, CONTRACTOR IS RESPONSIBLE FOR HAND WATERING RELOCATED TREES AND PALMS THROUGHOUT THE MAINTENANCE PERIOD AND UNTIL FINAL ACCEPTANCE BY THE LANDSCAPE ARCHITECT AND/OR CLIENT.
- 6.1.5. IMMEDIATELY AFTER RELOCATION TO THE FINAL LOCATION, A HIGH-PHOSPHORUS ROOT STIMULANT MUST BE APPLIED TO THE SURFACE OF THE ROOTBALL AT THE RECOMMENDED LABEL RATE AND WATERED IN WITH A DRENCH CONSISTING OF A SYSTEMIC INSECTICIDE AND A CONTACT ROOT ROT FUNGICIDE, FOLLOWING LABEL INSTRUCTIONS, AS INITIAL PREVENTATIVE MAINTENANCE.
- 6.1.6. EVERY THREE MONTHS THEREAFTER, A HIGH-PHOSPHORUS ROOT STIMULANT MUST BE APPLIED TO THE SURFACE OF THE ROOTBALL AT THE RECOMMENDED LABEL RATE AND WATERED IN WITH A DRENCH CONSISTING OF A SYSTEMIC INSECTICIDE AND A BROAD-SPECTRUM SYSTEMIC FUNGICIDE, FOLLOWING LABEL INSTRUCTIONS, AS CONTINUING PREVENTATIVE MAINTENANCE.
- 6.1.7. IRRIGATION AND BRACING MUST BE CHECKED AND EACH TREE OR PALM THOROUGHLY INSPECTED FOR SIGNS OF STRESS, DISEASE, OR PEST PROBLEMS ON A MONTHLY BASIS.
- 6.2. SHADE TREES
- 6.2.1. IMMEDIATELY AFTER RELOCATION TO THE FINAL LOCATION AND EVERY THREE MONTHS THEREAFTER, A HIGH-QUALITY, SLOW-RELEASE 15-2-15 GRANULAR FERTILIZER MUST BE APPLIED, AT THE RECOMMENDED LABEL RATE, SPREAD EVENLY ACROSS THE SURFACE OF THE ROOTBALL.
- 6.2.2. FOLIAR FEED FOUR TIMES PER YEAR.

### 6.3 FLOWERING TREES

- 6.3.1. IMMEDIATELY AFTER RELOCATION TO THE FINAL LOCATION AND EVERY THREE MONTHS THEREAFTER, A HIGH-QUALITY, SLOW-RELEASE 5-10-15 GRANULAR FERTILIZER MUST BE APPLIED, AT THE RECOMMENDED LABEL RATE, SPREAD EVENLY ACROSS THE SURFACE OF THE ROOTBALL.
- 6.3.2. FOLIAR FEED FOUR TIMES PER YEAR.

#### 6.4. PALMS

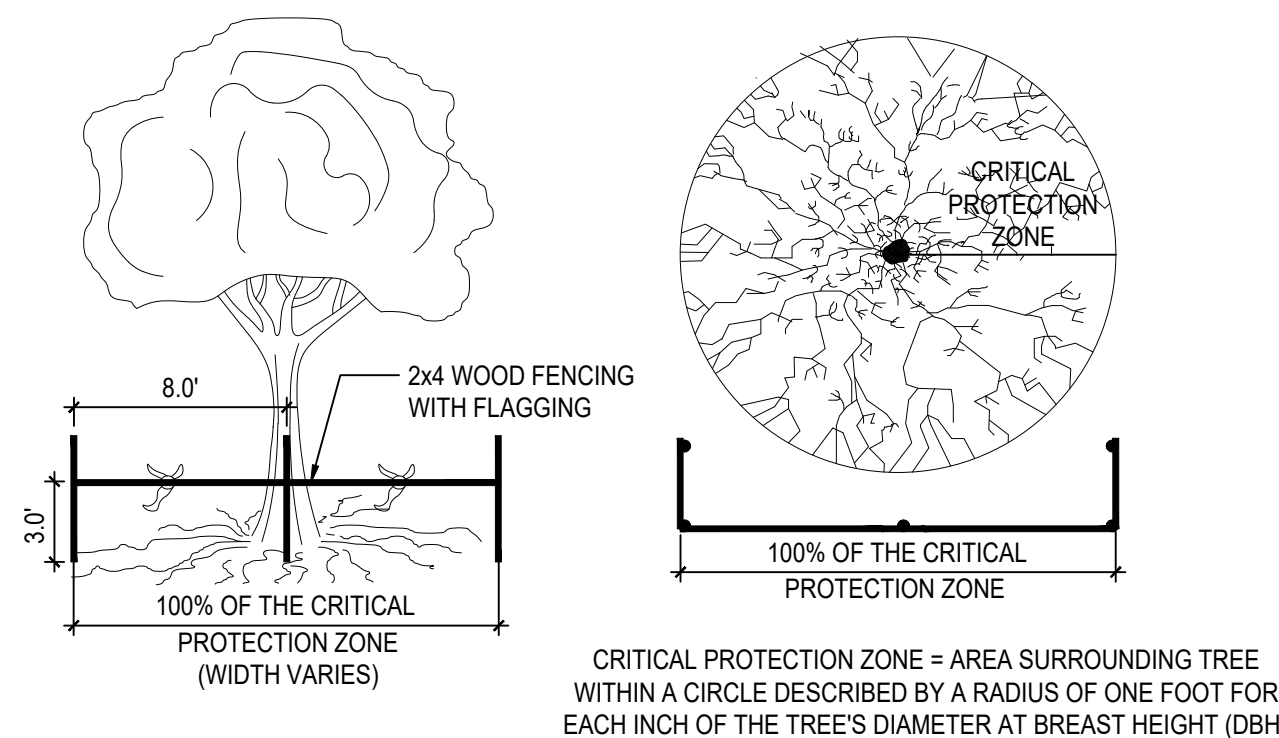
- 6.4.1. STRING MUST BE REMOVED FROM THE TIED UP LEAVES IMMEDIATELY AFTER RELOCATION TO THE FINAL LOCATION IF THE PALM WAS ROOT PRUNED OR WITHIN 30-45 DAYS AFTER RELOCATION ON THE OCCASION THE LANDSCAPE ARCHITECT APPROVED RELOCATION WITHOUT ROOT PRUNING DUE TO TIME CONSTRAINTS.
- 6.4.2. IMMEDIATELY AFTER RELOCATION TO THE FINAL LOCATION AND EVERY THREE MONTHS THEREAFTER, A HIGH-QUALITY, SLOW-RELEASE 8-4-12 GRANULAR PALM FERTILIZER WITH MINORS MUST BE APPLIED, AT THE RECOMMENDED LABEL RATE, SPREAD EVENLY ACROSS THE SURFACE OF THE ROOTBALL.
- 6.4.3. FOLIAR FEED SIX TIMES PER YEAR.

### TREE PROTECTION SPECIFICATIONS

- 7.1. TREE PROTECTION FENCES SHALL BE CONSTRUCTED PRIOR TO ANY CONSTRUCTION ACTIVITY INCLUDING GRUBBING FOR ALL TREES / PALMS TO REMAIN OR BE RELOCATED.
- 7.2. FENCES SHOULD BE OF STURDY CONSTRUCTION, PREFERABLY 4"x4" POSTS WITH WIRE MESH. ORANGE PLASTIC MESH FENCES ARE INEFFECTIVE BECAUSE THEY ARE EASILY REMOVED, DROPPED, KNOCKED DOWN, IGNORED, ETC.
- 7.3. FENCES MUST BE MAINTAINED INTACT UNTIL THE PROJECT IS COMPLETED. THEY SHOULD NOT BE REMOVED OR DROPPED FOR ANY REASON WITHOUT AUTHORIZATION FROM THE CITY'S URBAN FORESTER.
- 7.4. NO ACTIVITY OR DISTURBANCE SHOULD OCCUR WITHIN THE FENCED AREAS, INCLUDING VEHICLE USE, STORAGE OF MATERIALS, DUMPING OF LIQUIDS OR MATERIALS, GRADE CHANGES, GRUBBING, MECHANICAL TRENCHING FOR IRRIGATION, ELECTRICAL LIGHTING, ETC.

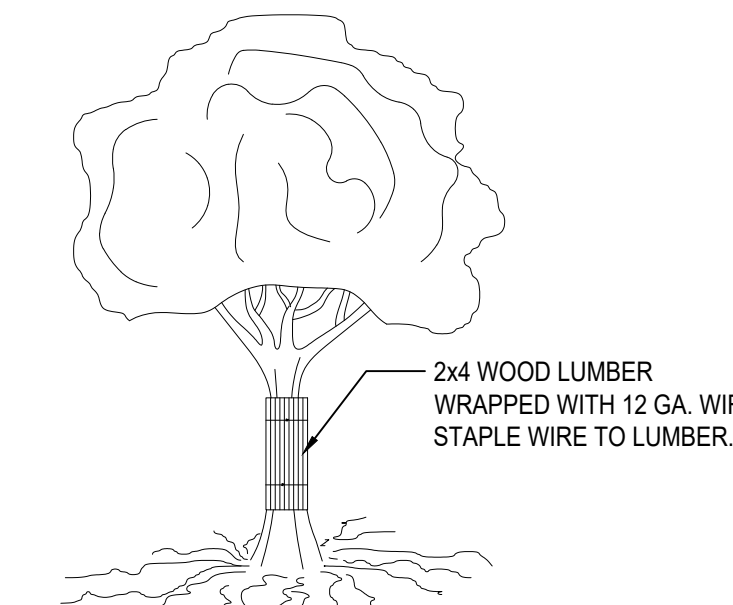
## WARRANTY

- 8.1. ALL RELOCATED TREES AND PALMS MUST BE GUARANTEED FOR ONE YEAR FROM THE DATE OF RELOCATION TO THEIR FINAL LOCATIONS.
- 8.2. IF A TREE OR PALM DIES WITHIN THE 1-YEAR WARRANTY PERIOD, IT MUST BE REMOVED AND REPLACED AT CONTRACTOR'S EXPENSE.
- 8.3. IF A TREE OR PALM PERFORMS POORLY WITHIN THE 1-YEAR WARRANTY PERIOD, IT MUST BE REMOVED AND REPLACED AT THE CONTRACTOR'S EXPENSE. THE DECISION TO REPLACE BASED ON POOR HEALTH IS AT THE DISCRETION OF THE LANDSCAPE ARCHITECT.
- 8.4. IF A TREE OR PALM SETTLES TO AN UNHEALTHY DEPTH WITHIN THE 1-YEAR WARRANTY PERIOD, AS DEEMED BY THE LANDSCAPE ARCHITECT, IT MUST BE RAISED TO THE CORRECT GRADE AT CONTRACTOR'S EXPENSE.



### 4 TREE BARRICADE DETAIL

SCALE: N/A



 TREE TRUNK PROTECTION DETAIL

(2) SCALE: N/A



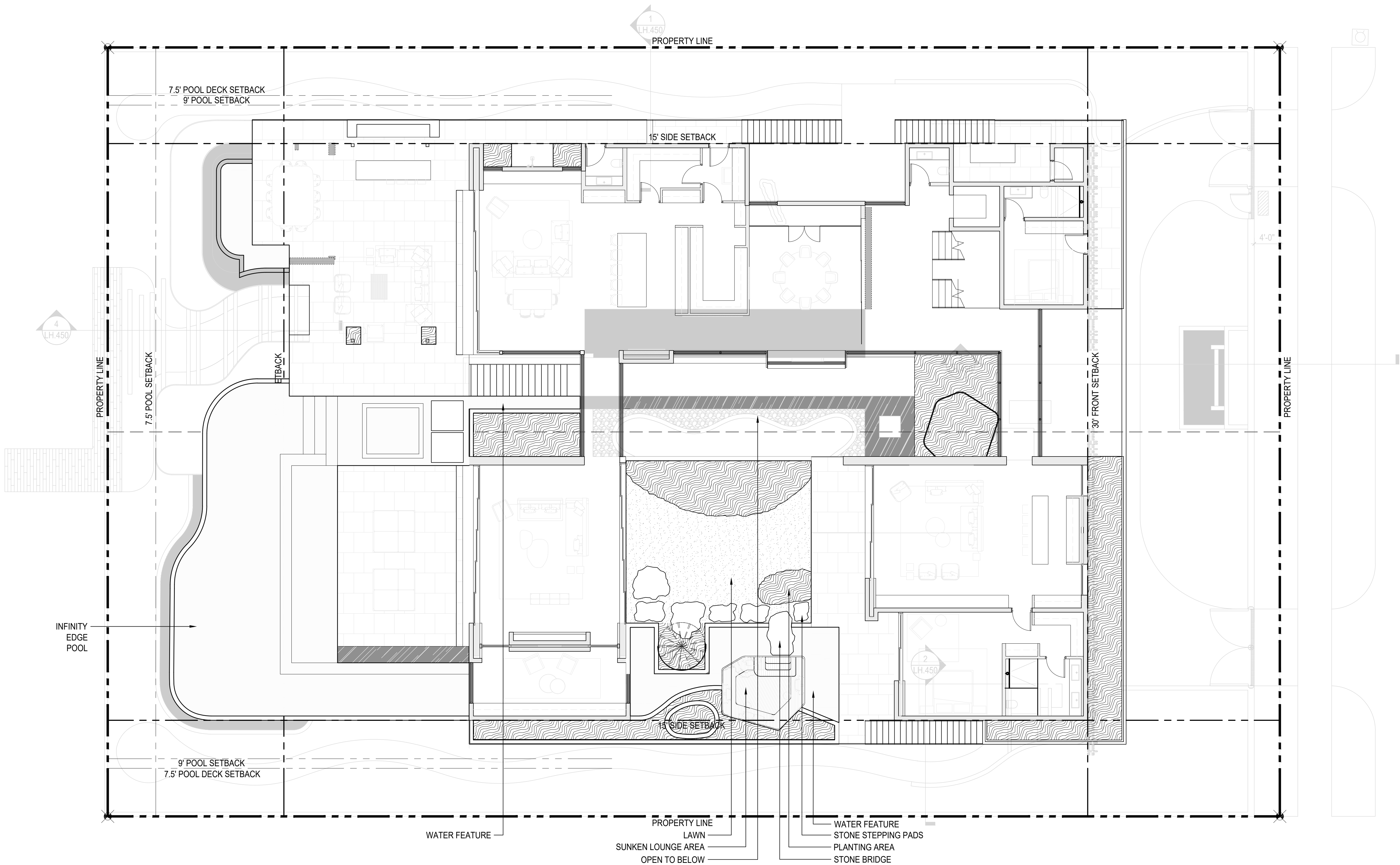


GENERAL NOTES:

- 
- 0 4' 8' 16'
- SCALE: 1/8" = 1'-0"



20211103 Christopher Barnes, S:\PROJECTS\21047\_228 - 302 W Dilido Gardens\20 DESIGN\24 WORKING\CAD\Sheet\21047\_03\_LH\_101\_Landscape Plan - First Floor.dwg



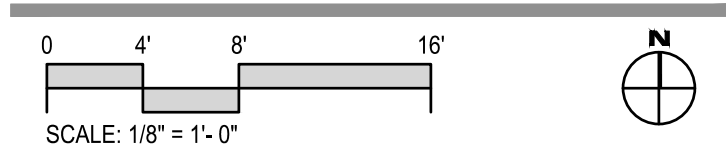
## LEGEND

PROPERTY LINE	
SETBACK	
ROOF OVERHANG	
CONCRETE GRASS PAVE WITH TURFGRASS	
SAND SET DRIVEWAY PAVERS	
WATER SURFACE	

PROPOSED	
LANDSCAPE AREA	
LAWN	
COQUINA SHELL OR PAVEMENT VEMENT	
BEACH PEBBLES	

## GENERAL NOTES:

- CONTRACTOR IS RESPONSIBLE FOR CALCULATING / VERIFYING ALL QUANTITIES.
- GENERAL CONTRACTOR SHALL SUBMIT, OBTAIN AND KEEP RECORDS OF ALL PERMITTING REQUIRED BY LOCAL CODES.
- PRIOR TO ANY CONSTRUCTION, CONTRACTOR SHALL LOCATE ALL UTILITIES USING "SUNSHINE 811". UTILITIES SHALL BE PROTECTED THROUGHOUT CONSTRUCTION.
- ALL MATERIALS ARE TO BE APPROVED BY LANDSCAPE ARCHITECT PRIOR TO PROCUREMENT.
- ALL ELEMENTS SHALL BE MOCKED-UP FOR CLIENT AND LANDSCAPE ARCHITECT'S REVIEW AND APPROVAL. CONTRACTOR TO REWORK MOCK-UP AS NECESSARY FOR APPROVAL. MAINTAIN APPROVED MOCK-UP FOR COMPARISON OF FINISHED WORK.
- ALL MATERIALS AND ELEMENTS LOCATION / LAYOUT SHALL BE APPROVED BY LANDSCAPE ARCHITECT PRIOR TO INSTALLATION. LANDSCAPE ARCHITECT SHALL BE PROVIDED 3 WEEKS NOTIFICATION IN ADVANCE OF LAYOUT WORK, TO APPROVE ON-SITE FORM WORK, PRIOR TO FABRICATION.
- SWIMMING POOL, SPA, WATER FEATURES, WATER DEPTHS, STEPS, LADDERS, HANDRAILS, SUBMERGED POOL LIGHTING, POOL DECK AREA LIGHTING, ETC. AS INDICATED HEREIN THE DRAWINGS ARE DELINEATED FOR USE AS A CONCEPTUAL DESIGN GUIDELINE AND FOR REFERENCE.
- ALL IMPROVEMENTS INCLUDING REQUIRED ENGINEERING DESIGN DOCUMENTS SHALL BE PROVIDED, CONSTRUCTED AND/OR INSTALLED BY THE GENERAL CONTRACTOR AND POOL SUBCONTRACTOR AS REQUIRED TO ENSURE COMPLIANCE WITH FLORIDA BUILDING CODE, CHAPTER 64E-9: PUBLIC SWIMMING POOLS AND BATHING PLACES, LATEST EDITIONS.



DILIDO ISLAND RESIDENCE  
**228+302 W. Dilido Drive**  
**Miami Beach, FL 33139**

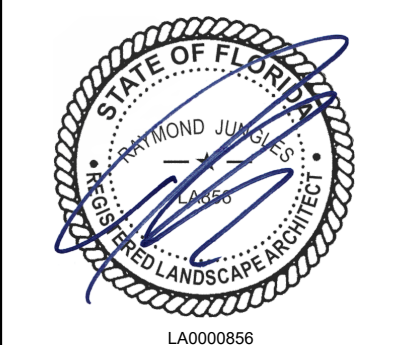
## REVISIONS:

1	11/08/2021	Revised DRB Final Submittal
---	------------	-----------------------------

No. Date Description

SEAL:

LANDSCAPE ARCHITECT: Raymond Jungles



SHEET TITLE:

**HARDSCAPE PLAN**  
**FIRST FLOOR**

DRB FINAL SUBMITTAL

Drawn By: CB

Checked By: GCH

Date: 08-02-2021

SHEET NUMBER:

**LH.101**



[illegible]

LH.390

