

STAR ISLAND RESIDENCE

4-6 STAR ISLAND DRIVE, MIAMI BEACH, FL 33139

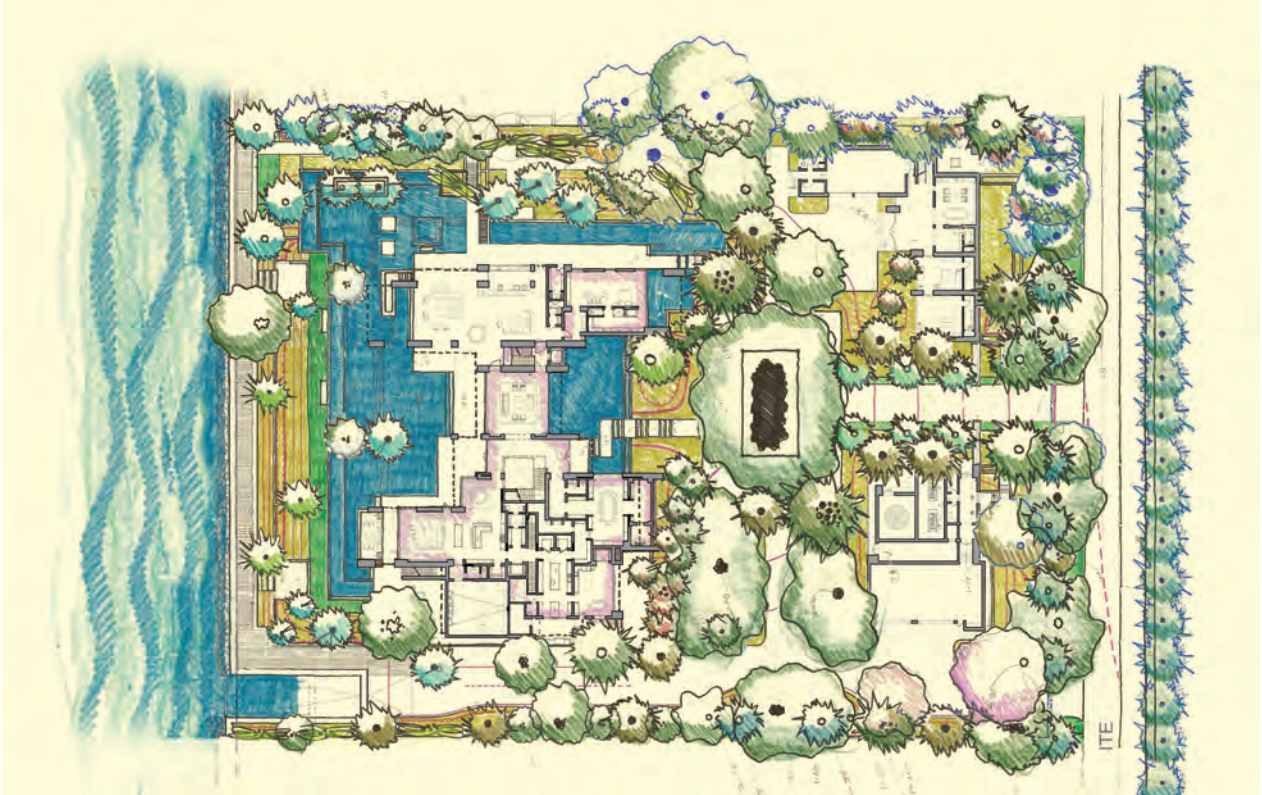
DRB Re-submittal - October 11, 2021

Prepared by:

jungles

Raymond Jungles, Inc.
Landscape Architect

2964 Aviation Ave.
Coconut Grove, FL 33133
P: 305.858.6777
www.raymondjungles.com
Florida License No. LC 000258



Sheet #	Drawing Index	DRB RE-SUBMITTAL
GI.000	COVER SHEET	•
LR.100	TREE DISPOSITION PLAN	•
LR.200	TREE DISPOSITION SCHEDULE	•
LR.201	TREE DISPOSITION NOTES & DETAILS	•
LH.100	HARDSCAPE PLAN	•
LH.400	HARDSCAPE ELEVATIONS	•
LH.401	HARDSCAPE ELEVATIONS	•
LH.500	HARDSCAPE SECTIONS	•
LG.100	GRADING PLAN	•
LP.100	CANOPY PLANTING PLAN	•
LP.200	UNDERSTORY PLANTING PLAN	•
LP.300	PLANTING SCHEDULE / MITIGATION CHART/ LANDSCAPE LEGEND	•
LP.400	PLANTING DETAILS	•
LP.401	PLANTING NOTES & SPECIFICATIONS	•
LM.100	LANDSCAPE MOOD BOARD	•
LM.101	LANDSCAPE MOOD BOARD	•
LM.102	LANDSCAPE MOOD BOARD	•
LM.103	LANDSCAPE MOOD BOARD	•
LM.104	LANDSCAPE MOOD BOARD	•
LM.105	LANDSCAPE MOOD BOARD	•
LM.106	LANDSCAPE MOOD BOARD	•
LM.107	LANDSCAPE MOOD BOARD	•
LM.108	LANDSCAPE MOOD BOARD	•
LM.109	LANDSCAPE MOOD BOARD	•
LM.110	LANDSCAPE MOOD BOARD	•
LM.111	LANDSCAPE MOOD BOARD	•
LM.112	LANDSCAPE MOOD BOARD	•
LL.100	LANDSCAPE LIGHTING SPECIFICATIONS	•

OCT 11, 2021

DESIGNER:
SCOTT MITCHELL STUDIO
181 NORTH MARTEL AVE
LOS ANGELES, CA 90036
(323) 933-9078

LOCAL ARCHITECT:
STUDIO MC+G ARCHITECTURE
7500 NE 4TH COURT
STUDIO 103
MIAMI, FL 33138
(305) 573-2728

LANDSCAPE:
RAYMOND JUNGLES, INC.
2964 AVIATION AVENUE
COCONUT GROVE, FL 33133
(305) 858-6777

OWNER'S REPRESENTATIVE:
HANDCRAFT CONSTRUCTION
MANAGEMENT, INC.
1498 NW 3RD STREET
DEERFIELD BEACH, FL 33442
(954) 418-6344

4-6 STAR ISLAND

TREE DISPOSITION SCHEDULE

Per Survey Date 04/15/2021

Existing Trees and Palms							Mitigation Credits Required		
ID#n	Symbol	Scientific Name	Common Name	D.B.H. (inch)	O.A. Height (feet)	Canopy Diameter (feet)	Notes	Disposition	Mitigation Credits Required
		<i>Bismarckia nobilis</i>	Bismarck Palm	12	30 CT 20 OA	18		Relocate	
#401	WBI	<i>Wodyetia bifurcata</i>	Foxtail Palm	9	21 CT 32 OA	17		Remove	(1) Tree
#402	AHE	<i>Avicucaria heterophylla</i>	Norfolk Island Pine	6	24	15		Remove	6
#403	AHE	<i>Avicucaria heterophylla</i>	Norfolk Island Pine	7	28	15		Remove	7
#404	PCA	<i>Phoenix canariensis</i>	Canary Island Date Palm	22	18 CT 27 OA	22		Relocate	
#405	PCA	<i>Phoenix canariensis</i>	Canary Island Date Palm	21	15 CT 26 OA	22		Relocate	
#406	PCA	<i>Phoenix canariensis</i>	Canary Island Date Palm	23	15 CT 24 OA	20		Relocate	
#407	PCA	<i>Phoenix canariensis</i>	Canary Island Date Palm	16	28 CT 38 OA	20		Relocate	
#408	PCA	<i>Phoenix canariensis</i>	Canary Island Date Palm	26	25 CT 35 OA	22		Relocate	
#409	PCA	<i>Phoenix canariensis</i>	Canary Island Date Palm	28	25 CT 35 OA	22		Relocate	
#410	PCA	<i>Phoenix canariensis</i>	Canary Island Date Palm	28	26 CT 36 OA	22		Relocate	
#411	PCA	<i>Phoenix canariensis</i>	Canary Island Date Palm	28	26 CT 34 OA	22		Relocate	
#412	PCA	<i>Phoenix canariensis</i>	Canary Island Date Palm	26	25 CT 35 OA	22		Relocate	
#413	BSI	<i>Bursera simaruba</i>	Gumbo Limbo	19	28	25		Remain	
#414	PFE	<i>Phoenix redifolia</i>	Sengal Date Palm	10	8 CT 17 OA	16		Relocate	
#415	PCA	<i>Phoenix canariensis</i>	Canary Island Date Palm	27	25 CT 30 OA	25		Relocate	
#416	PLU	<i>Plumeria spp.</i>	Frangipani	12	14	10		Relocate	
#417	LCH	<i>Liostoma chinensis</i>	Chinese Fan Palm	8	20 CT 27 OA	11		Remove	(1) Tree
#418	BNO	<i>Bismarckia nobilis</i>	Bismarck Palm	12	25 CT 33 OA	18		Relocate	
#419	LCH	<i>Liostoma chinensis</i>	Chinese Fan Palm	7	15 CT 13 OA	8	Mitigation not required; Specs do not meet minimum requirements	Relocate	
#420	LCH	<i>Liostoma chinensis</i>	Chinese Fan Palm	10	20 CT 27 OA	11		Remove	(1) Tree
#421	LIA	<i>Ligustrum japonicum</i>	Ligustrum	6	11	6		Relocate	
#422	CRO	<i>Cordia rosea</i>	Pitch Apple	8	10	30		Relocate	
#423	LDO	<i>Lentania lentoides</i>	Red Latam Palm	8	34 CT 21 OA	11		Relocate	
#424	PEL	<i>Psychopogon elegans</i>	Solitaire Palm	3	18 CT 14 OA	11	Mitigation not required; Specs do not meet minimum requirements	Remove	
#425	PEL	<i>Psychopogon elegans</i>	Solitaire Palm	4	25 CT 83 OA	11	Mitigation not required; Specs do not meet minimum requirements	Remove	
#426	PFE	<i>Phoenix redifolia</i>	Sengal Date Palm Clump	14	13 CT 26 OA	16		Relocate	
#427	PEL	<i>Psychopogon elegans</i>	Solitaire Palm	3	21 CT 30 OA	7	Mitigation not required; Specs do not meet minimum requirements	Remove	
#428	LCH	<i>Liostoma chinensis</i>	Chinese Fan Palm double	17	24 CT 30 OA	15		Remove	(1) Tree
#429	PCA	<i>Phoenix canariensis</i>	Canary Island Date Palm	16	12 CT 20 OA	8		Relocate	
#430	LCH	<i>Liostoma chinensis</i>	Chinese Fan Palm	8	8 CT 17 OA	11		Remove	(1) Tree
#431	LDO	<i>Lentania lentoides</i>	Red Latam Palm	7	12 CT 20 OA	14		Relocate	
#432	LCH	<i>Liostoma chinensis</i>	Chinese Fan Palm triple	14	23 CT 28 OA	18		Remove	(1) Tree
#433	LCH	<i>Liostoma chinensis</i>	Chinese Fan Palm	9	23 CT 30 OA	12		Remove	(1) Tree
#434	TRE	<i>Taxus benjamina</i>	Weeping Elm	35	40	45		Remove	4
#435	AHE	<i>Avicucaria heterophylla</i>	Norfolk Island Pine	4	33	10		Remove	(1) Tree
#436	PCA	<i>Phoenix canariensis</i>	Canary Island Date Palm	22	27 CT 34 OA	19		Relocate	
#437	PCA	<i>Phoenix canariensis</i>	Canary Island Date Palm	24	26 CT 34 OA	18		Relocate	

Identifying Trees and Palms				D.B.H. (inch)	O.A. Height (feet)	Canopy Diameter (feet)	Notes	Disposition	Mitigation Credits Required
ID#	Symbol	Scientific Name	Common Name						
LOT 5									
#501	LLO	<i>Likistona likistensis</i>	Red Lantana Palm	8	10 CT 18 OA	12		Relocate	
#502	UCH	<i>Likistona chinensis</i>	Chinese Fan Palm	7	15 CT 20 OA	10		Remove	(1) Tree
#503	PCA	<i>Phoenix canariensis</i>	Canary Island Date Palm	24	25 CT 36 OA	22		Relocate	
#504	WBI	<i>Wodyetia bifurcata</i>	Foxtail Palm	9	26 CT 30 OA	14		Remove	(1) Tree
#505	WBI	<i>Wodyetia bifurcata</i>	Foxtail Palm	9	28 CT 36 OA	14		Remove	(1) Tree
#506	CRO	<i>Clusia rosea</i>	Pitch Apple	17	35	25		Relocate	
#507	WBI	<i>Wodyetia bifurcata</i>	Foxtail Palm	9	28 CT 36 OA	17		Remove	(1) Tree
#508	QVI	<i>Quercus virginiana</i>	Live Oak	13	24	30		Remain	
#509	UCH	<i>Likistona chinensis</i>	Chinese Fan Palm	7	17 CT 26 OA	12		Relocate	(1) Tree
#510	VAR	<i>Veitchia arundinacea</i>	Montgomery Palm	3	18 CT 27 OA	11	Mitigation not required; Specs do not meet minimum requirements	Remove	
#511	UCH	<i>Likistona chinensis</i>	Chinese Fan Palm double	6	8 CT 19 OA	10		Remove	(1) Tree
#512	UCH	<i>Likistona chinensis</i>	Chinese Fan Palm double	14	21 CT 28 OA	14		Remove	(1) Tree
#513	VAR	<i>Veitchia arundinacea</i>	Montgomery Palm	3	11 CT 18 OA	8	Mitigation not required; Specs do not meet minimum requirements	Remove	
#514	LLO	<i>Likistona likistensis</i>	Red Lantana Palm	8	16 CT 24 OA	10		Relocate	
#515	PCA	<i>Phoenix canariensis</i>	Canary Island Date Palm	12	23 CT 32 OA	14		Relocate	
#516	FBE	<i>Ficus benjamina</i>	Sensational Date Palm	30	35 CT 18 OA	30		Remove	
#517	UCH	<i>Likistona chinensis</i>	Chinese Fan Palm double	12	18 CT 24 OA	14		Relocate	(1) Tree
#518	UCH	<i>Likistona chinensis</i>	Chinese Fan Palm double	14	19 CT 26 OA	14		Remove	(1) Tree
#519	UCH	<i>Likistona chinensis</i>	Chinese Fan Palm	8	19 CT 26 OA	12		Remove	(1) Tree
#520	PCA	<i>Phoenix canariensis</i>	Canary Island Date Palm	21	30 CT 40 OA	24		Relocate	
#521	CRO	<i>Clusia rosea</i>	Pitch Apple	6	26	20		Relocate	
#522	PYL	<i>Psychospermum elegans</i>	Solitaire Palm	3	18 CT 26 OA	11	Mitigation not required; Specs do not meet minimum requirements	Remove	
#523	PYL	<i>Psychospermum elegans</i>	Solitaire Palm	3	24 CT 32 OA	13	Mitigation not required; Specs do not meet minimum requirements	Remove	
#524	PCA	<i>Phoenix canariensis</i>	Canary Island Date Palm	22	24 CT 35 OA	24		Relocate	
#525	FBE	<i>Ficus benjamina</i>	Weeping Fig	25	17	10		Remove	25
#526	FBE	<i>Ficus benjamina</i>	Weeping Fig	27	17	10		Remove	27
#527	PCA	<i>Phoenix canariensis</i>	Canary Island Date Palm	26	22 CT 30 OA	24		Relocate	
#528	PCA	<i>Phoenix canariensis</i>	Canary Island Date Palm	22	22 CT 30 OA	24		Relocate	
#529	PCA	<i>Phoenix canariensis</i>	Canary Island Date Palm	27	25 CT 34 OA	18		Relocate	
#530	FBE	<i>Ficus benghalensis</i>	Banyan	200	50	72		Relocate	
#531	PRU	<i>Phoenix rostrata</i>	GIFF Date Palm	10	10 CT 18 OA	14		Relocate	
#532	AHE	<i>Artocarpus heterophylla</i>	Norfolk Island Pine	9	33	12		Relocate	
#533	PHS	<i>Phoenix spp.</i>	Phoenix spp dump	8 x 10	22 CT 30 OA	20	8 trunks total	Relocate	9
#534	PHS	<i>Phoenix spp.</i>	Phoenix spp dump	42	24 CT 30 OA	22	4 trunks total, remove 1 weak trunk	Relocate	
#535		<i>Some palm in #534</i>							
#536	RRE	<i>Ravastonia regia</i>	Royal Palm	20	52 CT 62 OA	18		Relocate	
#537	RRE	<i>Ravastonia regia</i>	Royal Palm	18	28 CT 38 OA	20		Relocate	
#538	RRE	<i>Ravastonia regia</i>	Royal Palm	18	33 CT 40 OA	24		Relocate	
#539	PRE	<i>Phoenix redclintonae x roosebankii</i>	Date Palm Hybrid	12	12 CT 20 OA	14		Relocate	
#540	PRE	<i>Phoenix redclintonae x roosebankii</i>	Date Palm Hybrid	8	14 CT 22 OA	15		Relocate	
#541	PRE	<i>Phoenix redclintonae x roosebankii</i>	Date Palm Hybrid	5	15 CT 20 OA	12		Relocate	
#542	POA	<i>Phoenix da Cyflera Medjojo</i>	Medjojo Date Palm	18	40 CT 53 OA	26		Relocate	
#543	POA	<i>Phoenix da Cyflera Medjojo</i>	Medjojo Date Palm	14	37 CT 43 OA	25		Relocate	
#544	POA	<i>Phoenix da Cyflera Medjojo</i>	Medjojo Date Palm	20	39 CT 43 OA	25		Relocate	
#545	POA	<i>Phoenix da Cyflera Medjojo</i>	Medjojo Date Palm	16	38 CT 47 OA	24		Relocate	
#546	POA	<i>Phoenix da Cyflera Medjojo</i>	Medjojo Date Palm	18	37 CT 43 OA	18		Relocate	
#547	POA	<i>Phoenix da Cyflera Medjojo</i>	Medjojo Date Palm	13	37 CT 46 OA	23		Relocate	
#548	POA	<i>Phoenix da Cyflera Medjojo</i>	Medjojo Date Palm	14	38 CT 43 OA	25		Relocate	
#549	POA	<i>Phoenix da Cyflera Medjojo</i>	Medjojo Date Palm	14	28 CT 35 OA	25		Relocate	

Existing Trees and Palms				D.B.H. (inch)	O.A. Height (feet)	Canopy Diameter (feet)	Notes	Disposition	Mitigation Credits Required
Iden.	Symbol	Scientific Name	Common Name						
LOT 6									
#601	MFR	<i>Myrciosthis fragrans</i>	Simpson's Stopper	15	14	12		Relocate	
#602	ALA	<i>Amphibena latifolia</i>	Black Calabash	8	20	18		Relocate	
#603	ALA	<i>Amphibena latifolia</i>	Black Calabash	5	17	10		Relocate	
#604	SU	<i>Satakenia bijkuriensis</i>	Satakenia Palm	11	17 CT 26 OA	18		Relocate	
#605	HEL	<i>Heterospathis elata</i>	Sagui Palm Double	14	28 CT 32 OA	18		Relocate	
#606	CMA	<i>Chambyronia macrocarpa</i>	Red Feather Palm	14	14 CT 24 OA	18		Relocate	
#607	RRE	<i>Roystonea regia</i>	Royal Palm	19	37 CT 45 OA	22		Remain	
#608	CWI	<i>Candelia wisteriana</i>	Willie Cinnamon Bark	3	14	8		Remove	3
#609	CWI	<i>Candelia wisteriana</i>	Willie Cinnamon Bark	4	10	7	Mitigation not required; Specs do not meet minimum requirements	Remove	
#610	CDI	<i>Coccoloba diversifolia</i>	Pigeon Plum	40	35	35		Remain	
#611	RRE	<i>Roystonea regia</i>	Royal Palm	20	48 CT 52 OA	20		Remain	
#612	CRO	<i>Crota rosea</i>	Pitch Apple	40	35	35		Remain	
#613	CMA	<i>Chambyronia macrocarpa</i>	Red Feather Palm	8	18 CT 25 OA	14		Remain	
#614	RRE	<i>Roystonea regia</i>	Royal Palm	16	34 CT 48A	22		Remain	
#615	SU	<i>Satakenia bijkuriensis</i>	Satakenia Palm	11	17 CT 26 OA	20		Remain	
#616	MFR	<i>Myrciosthis fragrans</i>	Simpson's Stopper	16	11	12		Remain	
#617	RRE	<i>Roystonea regia</i>	Royal Palm	20	48 CT 52 OA	20		Remain	
#618	SU	<i>Satakenia bijkuriensis</i>	Satakenia Palm	11	17 CT 26 OA	20		Remain	
#619	SU	<i>Satakenia bijkuriensis</i>	Satakenia Palm	11	19 CT 33 OA	20		Remain	
#620	HEL	<i>Heterospathis elata</i>	Sagui Palm	22	22 CT 30 OA	24	Triple trunk	Relocate	
#621	RMA	<i>Revenella madagascariensis</i>	Travelers Palm	95	30 OA	25		Relocate	
#622	RMA	<i>Revenella madagascariensis</i>	Travelers Palm	110	34 OA	25		Relocate	
#623	RMA	<i>Revenella madagascariensis</i>	Travelers Palm	40	34	25		Relocate	
#624	RMA	<i>Revenella madagascariensis</i>	Travelers Palm	140	35	25		Relocate	
#625	RMA	<i>Revenella madagascariensis</i>	Travelers Palm	70	35	25		Relocate	
#626	SU	<i>Satakenia bijkuriensis</i>	Satakenia Palm	11	19 CT 28 OA	24		Relocate	
#627	SU	<i>Satakenia bijkuriensis</i>	Satakenia Palm	11	19 CT 28 OA	24		Relocate	
#628	CRO	<i>Crota rosea</i>	Pitch Apple	30	28	24		Relocate	
#629	CMA	<i>Chambyronia macrocarpa</i>	Red Feather Palm	9	10 CT 16 OA	11		Relocate	
#630	SMA	<i>Swartiana mahagani</i>	Mahogany	72	55	20		Remain	
#631	BAR	<i>Bursera arborea</i>	Yerewood	12	27	22		Relocate	
#632	ALA	<i>Amphibena latifolia</i>	Black Calabash	8	16	12		Relocate	
#633	ALA	<i>Amphibena latifolia</i>	Black Calabash	11	16	12		Relocate	
#634	CSP	<i>Chorisia speciosa</i>	Silk Floss Tree	18	28	24		Relocate	
#635	ALA	<i>Amphibena latifolia</i>	Black Calabash	16	17	12		Relocate	
#636	ALA	<i>Amphibena latifolia</i>	Black Calabash	11	20	18		Relocate	
#637	RRE	<i>Roystonea regia</i>	Royal Palm	19	40 CT 55 OA	24		Relocate	
#638	RRE	<i>Roystonea regia</i>	Royal Palm	18	40 CT 55 OA	24		Relocate	
#639	ONU	<i>Coccothrinax nucifera</i>	Coconut Palm	10	32 CT 45 OA	24		Relocate	
#640	ONU	<i>Coccothrinax nucifera</i>	Coconut Palm	11	32 CT 45 OA	24		Relocate	
#641	ONU	<i>Coccothrinax nucifera</i>	Coconut Palm	12.8	40 CT 52 OA	24		Relocate	
#642	ONU	<i>Coccothrinax nucifera</i>	Coconut Palm	6.9	40 CT 52 OA	24		Relocate	
#643 Same as #642									
#644	CE5	<i>Conocarpus ere Ctus var. semi</i>	Silver Buttonwood	15	12	14		Relocate	
#645	VME	<i>Veitchia merillii</i>	Adonca Palm	4	15 CT 18 OA	3	Mitigation not required; Specs do not meet minimum requirements	Remove	
#646	CAN	<i>Cayota sinensis anacardifolia</i>	Carobwood	12	40	30		Relocate	32
#647	DLU	<i>Dyopsis luteocens</i>	Ardisia Palm	25	22	14		Relocate	
#648	Does not exist								
#649	Does not exist								
#650	Does not exist								
#651	Does not exist								
#652	Does not exist								
#653	Does not exist								
#654	Does not exist								
B.U.#655	EGR	<i>Eucleaphorosis gratus</i>	Same	N/A	5	5		Relocate	
Mitigation minimum requirement: Palm: 6" DBH & 15' OA, HT; Tree: 3" DBH & 12' OA, HT.									
Total Tree D.B.H. Removed Requiring Mitigation (inches)									148
Total Palms Removed Requiring Mitigation									18

TREE REPLACEMENT CHART

Total diameter of tree(s) to be removed (sum of inches at DBH)	Total number of replacement trees required (where each replacement tree is a minimum of 2" DBH x 6' spread in canopy x 12' in height)	OR	Total number of replacement trees required (where each replacement tree is a minimum of 4" DBH x 8' spread in canopy x 16' in height)	OR	Contribution to Tree Trust Fund
2"—3"	1	or	0	or	\$1,000.00
4"—6"	2	or	1	or	\$2,000.00
7"—12"	4	or	2	or	\$4,000.00
13"—18"	6	or	3	or	\$6,000.00
19"—24"	8	or	4	or	\$8,000.00
25"—30"	10	or	5	or	\$10,000.00
31"—36"	12	or	6	or	\$12,000.00
37"—42"	14	or	7	or	\$14,000.00
43"—48"	16	or	8	or	\$18,000.00
49"—60"	20	or	10	or	\$20,000.00

- (a) If the sum of the diameter of trees to be removed exceeds a total of 60 inches, the additional inches shall be added cumulatively from the top of the chart, down to the bottom of the chart, to calculate the number of trees required as replacement trees.
- (b) Up to 30 percent of the two-inch DBH replacement tree requirement may be met by planting native species within private property, with a minimum height of ten feet and a minimum DBH of one and one-half inches at time of planting.
- (c) The removal of a palm shall be replaced with one canopy tree at 12 feet overall height with a two-inch DBH.



RAYMOND JUNGLES
Lic. # LA0000856

STAR ISLAND RESIDENCE

SHEET 1 OF 1

TREE DISPOSITION SCHEDULE

SCALE

AS NOTED

SHEET

NUMBER

TREE / PALM PROTECTION NOTES

1. CONTRACTOR QUALIFICATIONS

- 1.1. CONTRACTOR MUST BE A LICENSED LANDSCAPE CONTRACTOR.
1.2. CONTRACTOR MUST HAVE A MINIMUM OF 10 YEARS OF PROVEN EXPERIENCE RELOCATING LARGE SPECIMEN TREES AND PALMS IN SOUTH FLORIDA.
1.3. CONTRACTOR MUST HAVE PROVEN EXPERIENCE RELOCATING TREES AND PALMS OF THE SAME SPECIES AND SIZE AS THOSE TO BE RELOCATED FOR THE CURRENT PROJECT.
1.4. CONTRACTOR MUST HAVE A CERTIFIED ARBORIST ON STAFF.

2. CONTRACTOR REQUIREMENTS

- 2.1. CONTRACTOR MUST VISIT THE JOBSITE AND INSPECT ALL TREES AND PALMS TO BE RELOCATED AS WELL AS EXISTING SITE CONDITIONS AND RESTRICTIONS PRIOR TO PREPARING BID.
2.2. CONTRACTOR MUST VERIFY AND ENSURE THAT ALL TREES AND PALMS IDENTIFIED ON THE PLANS AND THOSE TAGGED ON THE JOBSITE CORRESPOND AS TO NUMBER AND DESCRIPTION. ANY DISCREPANCIES MUST BE BROUGHT TO THE ATTENTION OF THE LANDSCAPE ARCHITECT IMMEDIATELY, PRIOR TO PREPARING BID.
2.3. CONTRACTOR MUST CONDUCT ALL WORK ASSOCIATED WITH RELOCATION AND MAINTENANCE OF TREES AND PALMS TO BE RELOCATED. NO WORK IS TO BE SUBCONTRACTED WITHOUT PRIOR WRITTEN CONSENT OF THE OWNER AND/OR LANDSCAPE ARCHITECT.
2.4. CONTRACTOR MUST DESIGNATE A COMPETENT, ENGLISH-SPEAKING SUPERVISOR OR FOREMAN TO OVERSEE AND DIRECT ALL RELOCATION AND MAINTENANCE ACTIVITIES AS OUTLINED IN THESE SPECIFIC NOTES.
2.5. CONTRACTOR MUST SCHEDULE ROOT PRUNING TO PROVIDE THE MAXIMUM POSSIBLE TIME FOR NEW ROOT GROWTH. EVEN TREES AND PALMS THAT TYPICALLY DO NOT REQUIRE LONG (OR ANY) ROOT PRUNING WILL BENEFIT FROM MORE ROOT PRUNING TIME; THEREFORE, ALL TREES AND PALMS TO BE RELOCATED MUST BE ROOT PRUNED. CONTRACTOR MUST PROVIDE A ROOT PRUNE SCHEDULE FOR EACH TREE OR PALM TO BE RELOCATED AS AN ATTACHMENT TO THE BID.
2.6. CONTRACTOR MUST CALL SUNSHINE 811 TO HAVE ALL UNDERGROUND UTILITIES LOCATED UNDER OR IN THE VICINITY OF THE CURRENT OR FUTURE LOCATIONS OF ALL TREES AND PALMS TO BE RELOCATED PRIOR TO WORK COMMENCING.
2.7. CONTRACTOR MUST VERIFY WITH THE GENERAL CONTRACTOR THE ABSENCE OF ANY UNDERGROUND CONSTRUCTION OR OBSTRUCTIONS (E.G., BULKHEADS, SEPTIC SYSTEMS, ETC.) IN THE CURRENT AND FUTURE LOCATIONS OF ALL TREES AND PALMS TO BE RELOCATED.
2.8. CONTRACTOR MUST ALERT THE LANDSCAPE ARCHITECT OF ANY TREES OR PALMS THAT WILL NOT SUCCESSFULLY RELOCATE DUE TO POOR HEALTH PRIOR TO BEGINNING ROOT PRUNING.
2.9. CONTRACTOR MUST FLAG ALL PROPOSED TRANSPLANT LOCATIONS FOR THE LANDSCAPE ARCHITECT'S APPROVAL A MINIMUM OF 15 DAYS PRIOR TO RELOCATION.
2.10. CONTRACTOR MUST ENSURE THAT ALL TREES AND PALMS TO BE RELOCATED ARE INSTALLED AT THE CORRECT GRADE OR ELEVATION, ACCORDING TO THE GRADING PLAN.
2.11. CONTRACTOR MUST ENSURE THAT ALL ROOT FLARES ARE EXPOSED AFTER RELOCATION.
2.12. CONTRACTOR MUST REMOVE ALL RESIDUAL ROOTS, STUMPS, AND PORTIONS THEREOF AND BACKFILL PITS FROM WHICH RELOCATED TREES AND PALMS WERE REMOVED WITH CLEAN FILL FLUSH WITH THE SURROUNDING GRADE.
2.13. CONTRACTOR MUST REPAIR ANY DAMAGE TO OTHER PLANTS, LAWN, HARDSCAPES, OR NEW CONSTRUCTION WITHIN THE RELOCATION AREA AT CONTRACTOR'S EXPENSE. HARDSCAPES INCLUDE BUT ARE NOT LIMITED TO CURBS, WALKS, ROADS, FENCES, SITE FURNISHINGS, ETC.
2.14. CONTRACTOR MUST PHOTOGRAPHICALLY DOCUMENT NEW ROOT GROWTH FOLLOWING EACH ROOT PRUNE AND SUBMIT THIS DOCUMENTATION TO THE LANDSCAPE ARCHITECT. THE PURPOSE OF THIS REQUIREMENT IS TO ENSURE THAT SUFFICIENT ROOT GROWTH HAS OCCURRED PRIOR TO THE SECOND AND SUBSEQUENT ROOT PRUNES AND FOLLOWING THE FINAL ROOT PRUNE PRIOR TO RELOCATION.
2.15. CONTRACTOR MUST INSTALL AND MAINTAIN PROTECTION FENCING AROUND EACH TREE AND PALM TO BE RELOCATED BOTH DURING ROOT PRUNING AND AFTER RELOCATION. PROTECTION FENCING MUST CONSIST OF GALVANIZED WELDED WIRE FABRIC OR PLASTIC MESH ATTACHED TO 4" X 4" POSTS INSERTED AROUND THE PERIMETER OF THE DRIPLINE OF THE TREE OR PALM. PROTECTION FENCING MUST BE PLUMB, TAUT, AND STURDY AT ALL TIMES AND MUST REMAIN IN PLACE THROUGHOUT THE ROOT PRUNING AND WARRANTY PERIODS, OR AS DIRECTED BY THE LANDSCAPE ARCHITECT.
2.16. CONTRACTOR MUST OBTAIN ALL NECESSARY OR REQUIRED PERMITS FOR THE RELOCATION AND TRANSPORTATION OF THE TREES AND PALMS TO BE RELOCATED.
2.17. CONTRACTOR MUST REPLACE ANY TREES OR PALMS SCARRED OR DAMAGED DURING RELOCATION, AT THE CONTRACTOR'S EXPENSE, WITH THE SAME OR SIMILAR SPECIES, SIZE, AND QUALITY. REPLACEMENT TREES OR PALMS MUST BE APPROVED BY THE LANDSCAPE ARCHITECT PRIOR TO PROCUREMENT, PREPARATION, AND/OR INSTALLATION. REPLACEMENT TREES AND PALMS MUST BE INSTALLED WITHIN 60 DAYS OF NOTICE.
2.18. CONTRACTOR MUST GUARANTEE ALL RELOCATED TREES AND PALMS FOR ONE YEAR FROM THE DATE OF RELOCATION TO THE FINAL LOCATION. GUARANTEE MUST INCLUDE TREE HEALTH AND SETTLING.
2.19. CONTRACTOR MUST PROVIDE ALL MATERIAL NECESSARY TO PERFORM THE WORK COVERED HEREIN, INCLUDING BUT NOT LIMITED TO BACKFILL MATERIAL, PROTECTION FENCING, FLAGGING, ADDITIVES AND SUPPLEMENTS, TEMPORARY IRRIGATION, BURLAP, WIRE, SHRINK WRAP, AND ALL NECESSARY TOOLS AND EQUIPMENT.

3. ROOT PRUNING SPECIFICATIONS

3.1. GENERAL

- 3.1.1. ALL TREES AND PALMS TO BE RELOCATED MUST BE WATERED DAILY FOR AT LEAST 2-3 DAYS PRIOR TO ANY ROOTS BEING CUT TO ENSURE THAT THEY ARE FULLY HYDRATED. EACH WATERING MUST THOROUGHLY SATURATE THE ROOTBALL TO ITS FULL DEPTH.
3.1.2. EACH TREE AND PALM MUST THEN BE WATERED EVERY OTHER DAY, NOT RELYING ON RAIN, DURING THE ENTIRE ROOT PRUNING PROCESS EITHER BY A TEMPORARY IRRIGATION SYSTEM OR BY HAND. EACH WATERING MUST THOROUGHLY SATURATE THE ROOTBALL TO ITS FULL DEPTH.
3.1.3. TREE AND PALM RELOCATION ACTIVITIES MUST BE SCHEDULED SO THAT REMOVAL AND REPLANTING TAKE PLACE IN THE SAME 24-HOUR PERIOD. NO TREES OR PALMS MAY BE "STOCKPILED" ONSITE OR OFFSITE FOR ANY PERIOD OF TIME WITHOUT PRIOR WRITTEN APPROVAL OF THE LANDSCAPE ARCHITECT. WHEN ALLOWED, APPROVAL FOR THE METHOD OF "STOCKPILING" MUST BE OBTAINED FROM THE LANDSCAPE ARCHITECT.
3.1.4. ALL DIGGING IN THE ROOT ZONE DURING THE ROOT PRUNE PROCESS MUST BE DONE BY HAND; NO MACHINERY WILL BE ALLOWED. PRUNING OF ROOTS MUST BE DONE BY HAND WITH CLEAN, SHARP TOOLS. DO NOT PAINT CUT ROOTS WITH TREE PAINT OR ANY KIND OF SEALANT.
3.1.5. MYCORRHIZA (ROOTS®) TRANSPLANT OR EQUIVALENT) MUST BE INCORPORATED INTO THE BACKFILL SOIL PRIOR TO BACKFILLING AS PER MANUFACTURER'S RECOMMENDATIONS.
3.1.6. AFTER EACH ROOT PRUNE, EACH SECTION OF ROOTBALL THAT IS PRUNED MUST BE WRAPPED WITH BLACK PLASTIC AND THE TRENCH BACKFILLED WITH ORIGINAL EXCAVATED SOIL. A TREE RING WITH A MINIMUM HEIGHT OF 6" MUST BE CONSTRUCTED 6-12" OUTSIDE THE OUTERMOST EDGE OF THE ROOTBALL AND AROUND THE ENTIRE PERIMETER OF THE ROOTBALL TO DIRECT IRRIGATION WATER AND ANY ADDED SUPPLEMENTS DOWN INTO THE ROOTBALL DURING ROOT REGENERATION.
3.1.7. ONCE THE TREE RING IS CONSTRUCTED AFTER EACH ROOT PRUNE, A HIGH-PHOSPHORUS ROOT STIMULANT MUST BE LIBERALLY APPLIED TO THE SURFACE OF THE ROOTBALL AND THOROUGHLY WATERED IN TO ENCOURAGE NEW ROOT GROWTH.

3.2. TREES

- 3.2.1. PRIOR TO ANY ROOTS BEING CUT, ALL MAJOR ROOTS MUST BE IDENTIFIED TO DETERMINE THE ROOTBALL DIAMETER BASED ON THE RELATIVE LOCATION AND SIZE OF THE ROOTS.
3.2.2. MANY TREE RELOCATION SPECIFICATIONS USE "GENERAL RULES" TO CALCULATE MINIMUM ROOTBALL DIAMETER, SUCH AS MULTIPLYING THE DIAMETER AT BREAST HEIGHT (DBH) OF THE TREE BY A FACTOR OF 10 OR ALLOWING A MINIMUM OF 8'-12" OF ROOTBALL FOR EVERY 1" OF TREE CALIPER. OTHERS LIST UNREALISTIC MINIMUM SIZES FOR THE ROOTBALLS OF VARIOUS TREE CALIPERS OR HEIGHTS. IN MANY CASES, SUCH APPROACHES RESULT IN ROOTBALLS THAT ARE EITHER TOO LARGE OR TOO SMALL. FOR A GIVEN TREE, THE FOLLOWING TABLE LISTS MINIMUM ROOTBALL DIAMETERS BASED ON REAL-WORLD EXPERIENCE OF TREE RELOCATION SPECIALISTS IN SOUTH FLORIDA:

CALIPER (inches)	MIN. ROOTBALL DIA. (feet)	CALIPER (inches)	MIN. ROOTBALL DIA. (feet)
1 - 4	3	12 - 14	8
4 - 5	4	15 - 17	10
6 - 7	5	18 - 24	12 - 15
8 - 9	6	25 - 30	15 - 25
10 - 11	7	30 +	as needed

- 3.2.3. WHENEVER POSSIBLE, ROOTBALLS MUST BE CIRCULAR IN SHAPE WITH AN EQUAL DISTANCE FROM THE TRUNK TO THE EDGE OF THE ROOTBALL ALL AROUND.
3.2.4. MINIMUM ROOTBALL DEPTH MUST BE 24"-36" FOR ALL TREES TO BE RELOCATED. WITH THE ACTUAL DEPTH TO BE DETERMINED ONLY AFTER A THOROUGH EXAMINATION OF ALL ROOTS DURING THE INITIAL ROOT INSPECTION AND BASED ON THE ABSENCE OF MAJOR ROOTS AT THE BOTTOM OF THE ROOTBALL. ROOTBALLS DEEPER THAN 36" MAY BE REQUIRED FOR LARGE SPECIMEN TREES, DEPENDING ON THE RELATIVE LOCATIONS AND DEPTHS OF THE MAJOR ROOTS AS OBSERVED DURING THE INITIAL ROOT INSPECTION.

- 3.2.5. AS A GENERAL RULE, MINIMUM ROOT PRUNE TIME FOR TREES WITH A DBH OF LESS THAN 10" IS 12 WEEKS. THE FIRST ROOT PRUNE MUST BE ON TWO OPPOSING SIDES OF THE ROOTBALL, WITH THE SECOND ROOT PRUNE ON ONE OF THE OTHER TWO SIDES DONE A MINIMUM OF 6 WEEKS LATER, AND A THIRD ROOT PRUNE ON THE LAST SIDE DONE A MINIMUM OF 3 WEEKS AFTER THAT. THE SECOND AND THIRD ROOT PRUNES MAY ONLY BE DONE WHEN HEALTHY NEW ROOT GROWTH FROM EARLIER ROOT PRUNES IS EVIDENT (SEE SECTION 2.14 ABOVE FOR SPECIFICATIONS ON PHOTOGRAPHICALLY DOCUMENTING NEW ROOT GROWTH DURING THE ROOT PRUNE PROCESS). MORE TIME MAY BE NEEDED DURING THE COOLER MONTHS OF THE YEAR.
3.2.6. AS A GENERAL RULE, MINIMUM ROOT PRUNE TIME FOR TREES WITH A DBH OF 10" OR GREATER IS 24 WEEKS. THE FIRST ROOT PRUNE MUST BE ON TWO OPPOSING SIDES OF THE ROOTBALL, WITH THE SECOND ROOT PRUNE ON ONE OF THE OTHER TWO SIDES DONE A MINIMUM OF 12 WEEKS LATER, AND A THIRD ROOT PRUNE ON THE LAST SIDE DONE A MINIMUM OF 6 WEEKS AFTER THAT. THE SECOND AND THIRD ROOT PRUNES MAY ONLY BE DONE WHEN HEALTHY NEW ROOT GROWTH FROM EARLIER ROOT PRUNES IS EVIDENT (SEE SECTION 2.14 ABOVE FOR SPECIFICATIONS ON PHOTOGRAPHICALLY DOCUMENTING NEW ROOT GROWTH DURING THE ROOT PRUNE PROCESS). MORE TIME MAY BE NEEDED DURING THE COOLER MONTHS OF THE YEAR.
3.2.7. CERTAIN HARDWOOD TREES AND GYMNOSPERMS REQUIRE LONGER ROOT PRUNING TIMES. THESE INCLUDE, BUT ARE NOT LIMITED TO, THE FOLLOWING:
- AVOCADO (PERSEA AMERICANA)
 - BLACK OLIVE (BUCIDA BUCERAS)
 - BRIDALVEIL (CAESALPINIA GRANADILLO)
 - CASSIAS (ALL SPECIES OF CASSIA)
 - LIGNUM VITAE (GLUAICUM SANCTUM & G. OFFICINALE)
 - PODOCARPUS (PODOCARPUS SP.)
 - LIVE OAK (QUERCUS VIRGINIANA)
 - MAHOGANY (SWietenia MAHAGONI)
 - MANGO (MANGIFERA INDICA)
 - PIGEON PLUM (COCOLOBIA DIVERSIFOLIA)
 - SWEET ACACIA (ACACIA FARNESIANA)
 - VERAWOOD (BULNESIA ARBOREA)
 - WILD TAMARIND (LYSILOMA LATISLIQUUM & L. SABICU)

FOR THESE TREES, THE MINIMUM ROOT PRUNE TIMES DISCUSSED IN SECTIONS 3.2.5 AND 3.2.6 ABOVE MAY BE INSUFFICIENT. ONLY WHEN SUFFICIENT NEW ROOT GROWTH HAS TAKEN PLACE FOLLOWING AN EARLIER ROOT PRUNE CAN THE NEXT ROOT PRUNE BE DONE, AND ONLY WHEN SUFFICIENT NEW ROOT GROWTH HAS TAKEN PLACE FOLLOWING THE FINAL ROOT PRUNE MAY THE TREE BE RELOCATED (SEE SECTION 2.14 ABOVE FOR SPECIFICATIONS ON PHOTOGRAPHICALLY DOCUMENTING NEW ROOT GROWTH DURING THE ROOT PRUNE PROCESS).

3.3. PALMS

- 3.3.1. THE FOLLOWING TABLE LISTS MINIMUM ROOTBALL DIAMETERS FOR VARIOUS SPECIES OF PALMS BASED ON REAL-WORLD EXPERIENCE OF RELOCATION SPECIALISTS IN SOUTH FLORIDA:

PALM SPECIES	ROOTBALL SPECIFICATIONS
SABAL /CABBAGE PALM	36" diameter
QUEEN & FOXTAIL PALMS	12" from trunk in all directions
ROYAL & COCONUT PALMS	18 - 24" from trunk in all directions
CANARY DATE PALM	24" from trunk in all directions
SLOW-GROWING PALMS (see sec. 3.3.4)	24" from trunk in all directions

- 3.3.2. PALM ROOTBALLS MUST BE A MINIMUM OF 24" DEEP. WHENEVER POSSIBLE, ROOTBALLS MUST BE CIRCULAR IN SHAPE WITH AN EQUAL DISTANCE FROM THE TRUNK TO THE EDGE OF THE ROOTBALL ALL AROUND.
3.3.3. AS A GENERAL RULE, MINIMUM ROOT PRUNE TIME FOR PALMS IS 6-8 WEEKS. THE FIRST ROOT PRUNE MUST BE ON TWO OPPOSING SIDES OF THE ROOTBALL, WITH THE SECOND ROOT PRUNE ON ONE OF THE OTHER TWO SIDES DONE A MINIMUM OF 3-4 WEEKS LATER, AND A THIRD ROOT PRUNE ON THE LAST SIDE DONE A MINIMUM OF 4-6 WEEKS AFTER THAT. THE SECOND AND THIRD ROOT PRUNES MAY ONLY BE DONE WHEN HEALTHY NEW ROOT GROWTH FROM EARLIER ROOT PRUNES IS EVIDENT (SEE SECTION 2.14 ABOVE FOR SPECIFICATIONS ON PHOTOGRAPHICALLY DOCUMENTING NEW ROOT GROWTH DURING THE ROOT PRUNE PROCESS). MORE TIME MAY BE NEEDED DURING THE COOLER MONTHS OF THE YEAR.
3.3.4. CERTAIN PALMS, IN PARTICULAR THOSE THAT ARE SLOW GROWING, REQUIRE LONGER ROOT PRUNING TIME. THESE INCLUDE, BUT ARE NOT LIMITED TO, THE FOLLOWING:

- ALL SPECIES OF ARCHONTOPHOENIX
- ALL SPECIES OF CORYPHA
- AMERICAN OIL PALMS (ALL SPECIES OF ATTALEA)
- BISMARCK PALM (BISMARCKIA NOBILIS)
- CUBAN & CARIBBEAN COPERNICIA
- CUBAN BELLY PALM (GASTROCOCCOS CRISPA)
- GINGERBREADDOOM PALMS (ALL SPECIES OF HYPHAENE)
- PALMYRA PALMS (ALL SPECIES OF BORASSUS)
- SATAKE PALM (SATAKENTIA LIUKIUNSIENSIS)
- SAW PALMETTO (SERENOA REPENS)
- SILVER PALM (COCOOTHINAX ARGENTATA)
- ZOMBIE PALM (ZOMBIA ANTILLARUM)

FOR THESE PALMS, THE MINIMUM ROOT PRUNING TIME IS 4-6 MONTHS OR GREATER. ONLY WHEN SUFFICIENT NEW ROOT GROWTH HAS TAKEN PLACE FOLLOWING AN EARLIER ROOT PRUNE CAN THE NEXT ROOT PRUNE BE DONE, AND ONLY WHEN SUFFICIENT NEW ROOT GROWTH HAS TAKEN PLACE FOLLOWING THE FINAL ROOT PRUNE MAY THE TREE BE RELOCATED (SEE SECTION 2.14 ABOVE FOR SPECIFICATIONS ON PHOTOGRAPHICALLY DOCUMENTING NEW ROOT GROWTH DURING THE ROOT PRUNE PROCESS).

4. CANOPY PRUNING SPECIFICATIONS

4.1. TREES

- 4.1.1. PRIOR TO RELOCATION, THE CANOPY OF EACH TREE TO BE RELOCATED MUST BE SELECTIVELY PRUNED TO REMOVE CROSSING, DEAD, DISEASED, BROKEN, AND LOW-HANGING BRANCHES THAT MAY INTERFERE WITH CONSTRUCTION ACTIVITIES, OR THAT MAY INTERFERE OR RESTRICT STRAPPING OR LIFTING THE TREE DURING RELOCATION.
4.1.2. FOR TREES BEING RELOCATED ONSITE, THE CANOPY MAY BE SELECTIVELY THINNED AND REDUCED BY NO MORE THAN 1/3 OF THE OVERALL CANOPY MASS, AT THE DIRECTION OF THE LANDSCAPE ARCHITECT; HOWEVER, THE BASIC SHAPE, FORM, AND CHARACTER OF THE TREE MUST BE PRESERVED.
4.1.3. FOR TREES BEING RELOCATED OFFSITE, THE CANOPY MUST BE PRUNED, AT THE DIRECTION OF THE LANDSCAPE ARCHITECT, TO FIT ON THE TRAILER FOR TRANSPORT. EVERY EFFORT MUST BE MADE TO RETAIN AS MANY LARGE BRANCHES AS POSSIBLE AND TO PRESERVE AS MUCH OF THE SHAPE, FORM, AND CHARACTER OF THE TREE AS POSSIBLE TO THE WIDEST LOAD WIDTH ALLOWABLE BY THE FLORIDA DEPARTMENT OF TRANSPORTATION. CONTRACTOR MUST OBTAIN ALL NECESSARY PERMITS AND ESCORTS TO TRANSPORT WIDE LOADS, PER FLORIDA LAW.
4.1.4. ALL CANOPY PRUNING MUST BE CONDUCTED FOLLOWING ANSI A-300 TREE PRUNING STANDARDS AND BEST MANAGEMENT PRACTICES.
4.1.5. ALL DEBRIS GENERATED DURING CANOPY PRUNING MUST BE REMOVED OFFSITE AND DISPOSED.

4.2. PALMS

- 4.2.1. IT IS WELL KNOWN THAT SOME PALMS SURVIVE RELOCATION BETTER WHEN ALL OF THE LEAVES ARE REMOVED (E.G., CABBAGE PALM, SABAL PALMETTO), AND THAT OTHER PALMS BENEFIT FROM HAVING THEIR LEAVES CUT IN HALF DURING RELOCATION (E.G., COCONUT PALM, COCOS NUCIFERA). BOTH OF THESE HORTICULTURAL PRACTICES, WHILE TRUE, ARE ONLY APPLICABLE WHEN PALMS ARE NOT ROOT PRUNED. LEAVES DO NOT NEED TO BE CUT IN HALF OR REMOVED FROM PALMS THAT ARE ADEQUATELY ROOT PRUNED. ON OCCASION WHEN SUFFICIENT ROOT PRUNING TIME IS NOT AVAILABLE, PALMS TO BE RELOCATED MAY HAVE THEIR LEAVES CUT IN HALF OR REMOVED ENTIRELY AT THE DIRECTION OF THE LANDSCAPE ARCHITECT.
4.2.2. PALM LEAVES MUST BE TIED UP WITH 2-PLY BIODEGRADABLE TWINE PRIOR TO RELOCATION TO PREVENT MECHANICAL DAMAGE DURING THE RELOCATION PROCESS.
4.2.3. PALM TRUNKS SHALL ONLY BE "CLEANED UP" ACCORDING TO THE LANDSCAPE ARCHITECT'S SPECIFICATIONS SPECIFIC TO EACH PALM.

5. RELOCATION SPECIFICATIONS

5.1. GENERAL

- 5.1.1. LANDSCAPE CONTRACTOR TO FLAG ALL PROPOSED PLANT LOCATIONS FOR LANDSCAPE ARCHITECT'S APPROVAL PRIOR TO INSTALLATION. NOTIFY LANDSCAPE ARCHITECT A MINIMUM OF 15 DAYS PRIOR TO REVIEW.
5.1.2. ALL TREES AND PALMS TO BE RELOCATED MUST BE WATERED DAILY FOR AT LEAST 5 DAYS PRIOR TO ANY RELOCATION TO ENSURE THAT THEY ARE FULLY HYDRATED. EACH WATERING MUST THOROUGHLY SATURATE THE ROOTBALL TO ITS FULL DEPTH.
5.1.3. ALL ROOTBALLS MUST BE WRAPPED IN BURLAP AND THEN TIGHTLY WIRE-WRAPPED (USING REDLINE HORSE WIRE OR EQUIVALENT) TO KEEP THE ENTIRE ROOTBALL INTACT DURING RELOCATION. TREES AND PALMS GROWING IN LIMESTONE MUST BE DUG AND RELOCATED WITH THE ROOTS ATTACHED TO A SECTION OF ROCK AS PART OF THE ROOTBALL, SUCH THAT THE ROOTS REMAIN INTACT. ROOTBALLS COMING FROM SAND OR SANDY SOIL MAY ALSO NEED TO BE BOXED PRIOR TO RELOCATION, AT THE DISCRETION OF THE LANDSCAPE ARCHITECT.
5.1.4. TREES AND PALMS BEING RELOCATED OFFSITE MUST HAVE THEIR ENTIRE ROOTBALLS THOROUGHLY AND TIGHTLY WRAPPED WITH PLASTIC SHRINK WRAP ON THE OUTSIDE OF THE WIRE WRAP, AND THE ENTIRE TREE OR PALM (INCLUDING CANOPY, TRUNK, AND ROOTBALL) MUST BE COVERED WITH A BREATHABLE TARP (E.G., SHADE CLOTH) DURING TRANSPORT.
5.1.5. NEW PLANTING PITS FOR RELOCATED TREES AND PALMS MUST BE PREPARED PRIOR TO LIFTING THE PALM OR TREE FROM ITS CURRENT LOCATION AND MUST BE AT LEAST 3-4 FEET WIDER THAN THE ROOTBALL AND THE SAME DEPTH AS THE ROOTBALL, SUCH THAT THE FINAL ELEVATION OF THE TOP OF THE ROOTBALL IS AT OR SLIGHTLY ABOVE (NO MORE THAN 2" HIGHER) FINAL GRADE.
5.1.6. TREES AND PALMS TO BE RELOCATED MUST BE LIFTED BY THE ROOTBALL ONLY, USING APPROPRIATELY SIZED (LENGTH AND STRENGTH) LIFTING STRAPS OR CHAINS. DURING LIFTING, THE TREE OR PALM MUST BE BALANCED IN A MORE-OR-LESS UPRIGHT POSITION, WITH THE STRAP ON THE TRUNK USED ONLY FOR BALANCING AND MANEUVERING THE TREE OR PALM INTO POSITION. NO CHAINS MAY BE USED AROUND OR AGAINST THE TRUNK AT ANY TIME. AT NO TIME SHALL 100% OF THE WEIGHT OF THE TREE OR PALM BE ON THE STRAP ATTACHED TO THE TRUNK. TRUNKS MUST BE HEAVILY PADDED WITH 30-60 LAYERS (DEPENDING ON SIZE AND WEIGHT) OF BURLAP BENEATH THE BALANCING STRAP.
5.1.7. TREES AND PALMS MUST BE LIFTED WITH A CRANE OR BACKHOE APPROPRIATELY SIZED FOR THE SIZE AND WEIGHT OF THE TREE OR PALM AND LIFTED OR CARRIED DIRECTLY TO THE FINAL INSTALL LOCATION OR TRANSPORT TRAILER.
5.1.8. ONCE LIFTING BEGINS, ANY UNCUT ROOTS UNDER OR AROUND THE ROOTBALL THAT MAY YET REMAIN MUST BE IMMEDIATELY SEVERED WITH HAND PRUNING TOOLS TO MINIMIZE TEARING AND ROOT DAMAGE.
5.1.9. ASIRIFORM PLANTING TABLETS (OR APPROVED EQUIVALENT) MUST BE EVENLY DISTRIBUTED AROUND THE PERIMETER OF THE PLANTING PIT AT THE RATE OF 2 TABLETS PER 1" TRUNK CALIPER PRIOR TO BACKFILLING.
5.1.10. MYCORRHIZA (ROOTS® TRANSPLANT OR EQUIVALENT) MUST BE INCORPORATED INTO THE BACKFILL SOIL PRIOR TO BACKFILLING.
5.1.11. RELOCATED TREES AND PALMS MUST BE CENTERED IN THE PLANTING PIT, AND THE PIT BACKFILLED USING A 1:1 MIXTURE OF EXISTING SOIL AND 80:20 (DOT SAND:MUCK) SOIL MIX THOROUGHLY BLENDED TOGETHER. DO NOT USE MUDDY SOIL AS BACKFILL. (SEE 5.2.2 BELOW FOR SPECIAL CONDITIONS REGARDING DATE PALM BACKFILL SPECIFICATIONS)
5.1.12. SMALL TREES AND PALMS MUST BE FIRMLY BRACED USING A MINIMUM OF FOUR 4" X 4" WOODEN BRACES ATTACHED TO 2" X 4" WOODEN BATTENS HELD IN PLACE WITH TWO STEEL BANDS. LARGER TREES MAY REQUIRE 6" X 6" WOODEN POSTS OR EVEN TELEPHONE POLES TO PROVIDE SUFFICIENT BRACING STRENGTH TO PREVENT TOPPLING DURING WIND EVENTS. A SUFFICIENT NUMBER OF BATTENS MUST BE STRATEGICALLY PLACED AROUND THE TRUNK SUCH THAT THE STEEL BANDS NEVER CONTACT THE TRUNK. NO BURLAP IS TO REMAIN UNDER THE WOODEN BATTENS ON TREES DURING BRACING, BUT SEVERAL LAYERS OF BURLAP SHOULD BE LEFT UNDER THE WOODEN BATTENS WHEN BRACING PALMS. NAILS SHALL NEVER BE DRIVEN DIRECTLY INTO THE TRUNK DURING BRACING. BRACING MUST REMAIN IN PLACE FOR A MINIMUM OF ONE YEAR.
5.1.13. A TREE RING WITH A MINIMUM HEIGHT OF 6" MUST BE CONSTRUCTED 6-12" OUTSIDE THE OUTERMOST EDGE OF THE ROOTBALL AND AROUND THE ENTIRE PERIMETER OF THE ROOTBALL TO DIRECT IRRIGATION WATER AND ANY SUPPLEMENTS THAT ARE ADDED DOWN INTO THE ROOTBALL DURING ROOT REGENERATION.
5.1.14. ONCE THE TREE RING IS CONSTRUCTED, A HIGH-PHOSPHORUS ROOT STIMULANT MUST BE LIBERALLY APPLIED TO THE SURFACE OF THE ROOTBALL AND THOROUGHLY WATERED IN.
5.1.15. ROOTBALLS MUST BE THOROUGHLY WATERED IN USING A HOSE AND A JOHNSON BAR INSERTED TO THE VERY BOTTOM OF THE ROOTBALL AND SWUNG BACK AND FORTH TO PREVENT FORMATION OF AIR POCKETS. THE JOHNSON BAR TECHNIQUE MUST BE REPEATED AT LEAST ONCE MORE WITHIN ONE WEEK AFTER RELOCATION, AND AGAIN IF ANY SIGNS OF STRESS BECOME APPARENT.
5.1.16. ORGANIC MULCH (MELALEUCA IS PREFERRED) MUST BE APPLIED WITHIN 48 HOURS OF RELOCATION AT A DEPTH OF 3-4" OVER THE ENTIRE TOP OF THE ROOTBALL FROM THE TREE RING TO WITHIN 6" OF THE TRUNK. MULCH MUST NOT BE APPLIED OR ALLOWED TO ACCUMULATE DIRECTLY AGAINST THE TRUNK.
5.1.17. PITS FROM WHICH THE RELOCATED TREES AND PALMS WERE REMOVED MUST BE CLEANED OF ALL RESIDUAL ROOTS, STUMPS, AND PORTIONS THEREOF AND BACKFILLED WITH CLEAN FILL FLUSH WITH THE SURROUNDING GRADE.
5.1.18. RESTORE THE SURFACE WITH MATERIAL TO MATCH ADJACENT AREAS. MATERIAL TO BE APPROVED BY LANDSCAPE ARCHITECT. CONTRACTOR TO PROVIDE A MINIMUM OF ONE YEAR WARRANTY ON SETTLING AND PLANT MATERIAL FROM TIME OF SUBSTANTIAL COMPLETION.
- 5.2. SPECIAL CONDITIONS
- 5.2.1. MULTI-TRUNK TREES AND PALMS MUST BE RELOCATED AS ONE UNIT WITH A SINGLE ROOTBALL.
5.2.2. PLANTING PITS FOR EDIBLE DATE PALMS (PHOENIX DACTYLIFERA) MUST BE BACKFILLED WITH PURE DOT SILICA SAND.

6. MAINTENANCE SPECIFICATIONS

6.1. GENERAL

- 6.1.1. ALL RELOCATED TREES AND PALMS MUST BE MAINTAINED FOR ONE YEAR FROM THE DATE OF RELOCATION TO THEIR FINAL LOCATIONS.
6.1.2. CONTRACTOR MUST MAINTAIN ALL RELOCATED TREES AND PALMS FOR ONE FULL YEAR FROM THE DATE OF RELOCATION TO THEIR FINAL LOCATION.
6.1.3. WHENEVER POSSIBLE, EACH TREE AND PALM MUST BE WATERED BY A PERMANENT AUTOMATIC IRRIGATION SYSTEM. IF THIS LOCATION, EACH WATERING MUST THOROUGHLY SATURATE THE ROOTBALL TO ITS FULL DEPTH. THIS WILL REQUIRE 25-50 GALLONS OF WATER FOR SMALL TREES AND PALMS, DEPENDING ON ROOTBALL SIZE, WHILE LARGE TREES WILL REQUIRE A MINIMUM OF 10 GALLONS PER FOOT OF ROOTBALL DIAMETER (I.E., A 10' DIAMETER ROOTBALL WILL REQUIRE A MINIMUM OF 100 GALLONS PER WATERING EVENT). WATERING FREQUENCY MUST BE EVERY DAY FOR THE FIRST TWO WEEKS, EVERY OTHER DAY FOR THE NEXT THREE WEEKS, AND EVERY THIRD DAY FOR THE NEXT 6-8 WEEKS.
6.1.4. WHEN AN AUTOMATIC IRRIGATION SYSTEM IS NOT POSSIBLE, CONTRACTOR IS RESPONSIBLE FOR HAND WATERING RELOCATED TREES AND PALMS THROUGHOUT THE MAINTENANCE PERIOD AND UNTIL FINAL ACCEPTANCE BY THE LANDSCAPE ARCHITECT AND/OR CLIENT.
6.1.5. IMMEDIATELY AFTER RELOCATION TO THE FINAL LOCATION, A HIGH-PHOSPHORUS ROOT STIMULANT MUST BE APPLIED TO THE SURFACE OF THE ROOTBALL AT THE RECOMMENDED LABEL RATE AND WATERED IN WITH A DRENCH CONSISTING OF A SYSTEMIC INSECTICIDE AND A BROAD-SPECTRUM SYSTEMIC FUNGICIDE, FOLLOWING LABEL INSTRUCTIONS, AS INITIAL PREVENTATIVE MAINTENANCE.
6.1.6. EVERY THREE MONTHS THEREAFTER, A HIGH-PHOSPHORUS ROOT STIMULANT MUST BE APPLIED TO THE SURFACE OF THE ROOTBALL AT THE RECOMMENDED LABEL RATE AND WATERED IN WITH A DRENCH CONSISTING OF A SYSTEMIC INSECTICIDE AND A BROAD-SPECTRUM SYSTEMIC FUNGICIDE, FOLLOWING LABEL INSTRUCTIONS, AS CONTINUING PREVENTATIVE MAINTENANCE.
6.1.7. IRRIGATION AND BRACING MUST BE CHECKED AND EACH TREE OR PALM THOROUGHLY INSPECTED FOR SIGNS OF STRESS, DISEASE, OR PEST PROBLEMS ON A MONTHLY BASIS.
6.2. SHADE TREES
- 6.2.1. IMMEDIATELY AFTER RELOCATION TO THE FINAL LOCATION AND EVERY THREE MONTHS THEREAFTER, A HIGH-QUALITY, SLOW-RELEASE 15-2-15 GRANULAR FERTILIZER MUST BE APPLIED, AT THE RECOMMENDED LABEL RATE, SPREAD EVENLY ACROSS THE SURFACE OF THE ROOTBALL.
6.2.2. FOLIAR FEED FOUR TIMES PER YEAR.
6.3. FLOWERING TREES
- 6.3.1. IMMEDIATELY AFTER RELOCATION TO THE FINAL LOCATION AND EVERY THREE MONTHS THEREAFTER, A HIGH-QUALITY, SLOW-RELEASE 5-10-15 GRANULAR FERTILIZER MUST BE APPLIED, AT THE RECOMMENDED LABEL RATE, SPREAD EVENLY ACROSS THE SURFACE OF THE ROOTBALL.
6.3.2. FOLIAR FEED FOUR TIMES PER YEAR.

6.4. PALMS

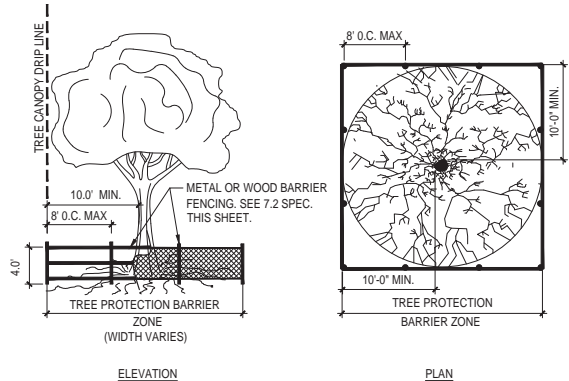
- 6.4.1. STRING MUST BE REMOVED FROM THE TIED UP LEAVES IMMEDIATELY AFTER RELOCATION TO THE FINAL LOCATION IF THE PALM WAS ROOT PRUNED OR WITHIN 30-45 DAYS AFTER RELOCATION ON THE OCCASION THE LANDSCAPE ARCHITECT APPROVED RELOCATION WITHOUT ROOT PRUNING DUE TO TIME CONSTRAINTS.
6.4.2. IMMEDIATELY AFTER RELOCATION TO THE FINAL LOCATION AND EVERY THREE MONTHS THEREAFTER, A HIGH-QUALITY, SLOW-RELEASE 8-4-12 GRANULAR PALM FERTILIZER WITH MINORS MUST BE APPLIED, AT THE RECOMMENDED LABEL RATE, SPREAD EVENLY ACROSS THE SURFACE OF THE ROOTBALL.
6.4.3. FOLIAR FEED SIX TIMES PER YEAR.

7. TREE PROTECTION SPECIFICATIONS

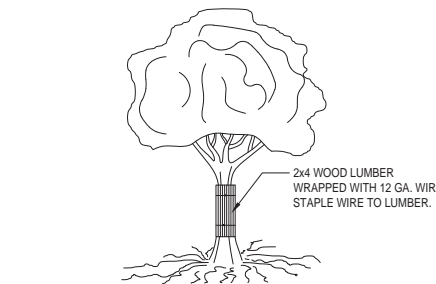
- 7.1. TREE PROTECTION FENCES SHALL BE CONSTRUCTED PRIOR TO ANY CONSTRUCTION ACTIVITY INCLUDING GRUBBING FOR ALL TREES / PALMS TO REMAIN OR BE RELOCATED.
7.2. FENCES SHOULD BE OF STURDY CONSTRUCTION. STURDY TEMPORARY BARRIERS SHALL BE INSTALLED AROUND ALL TREE PROTECTION ZONES. BARRIERS SHALL BE A MINIMUM OF FOUR FEET HIGH, AND SHALL BE CONSTRUCTED OF CONTINUOUS CHAIN LINK FENCE WITH METAL POSTS AT EIGHT-FOOT SPACING, OR OF TWO-BY-FOUR INCH POSTS WITH THREE EQUALLY SPACED TWO-BY-FOUR INCH RAILS. POSTS MAY BE SHIFTED TO AVOID ROOTS.
7.3. FENCES MUST BE MAINTAINED INTACT UNTIL THE PROJECT IS COMPLETED. THEY SHOULD NOT BE REMOVED OR DROPPED FOR ANY REASON WITHOUT AUTHORIZATION FROM THE CITY'S URBAN FORESTER.
7.4. NO ACTIVITY OR DISTURBANCE SHOULD OCCUR WITHIN THE FENCED AREAS, INCLUDING VEHICLE USE, STORAGE OF MATERIALS, DUMPING OF LIQUIDS OR MATERIALS, GRADE CHANGES, GRUBBING, MECHANICAL TRENCHING FOR IRRIGATION, ELECTRICAL LIGHTING, ETC.

8. WARRANTY

- 8.1. ALL RELOCATED TREES AND PALMS MUST BE GUARANTEED FOR ONE YEAR FROM THE DATE OF RELOCATION TO THEIR FINAL LOCATIONS.
8.2. IF A TREE OR PALM DIES WITHIN THE 1-YEAR WARRANTY PERIOD, IT MUST BE REMOVED AND REPLACED AT CONTRACTOR'S EXPENSE.
8.3. IF A TREE OR PALM PERFORMS POORLY WITHIN THE 1-YEAR WARRANTY PERIOD, IT MUST BE REMOVED AND REPLACED AT THE CONTRACTOR'S EXPENSE. THE DECISION TO REPLACE BASED ON POOR HEALTH IS AT THE DISCRETION OF THE LANDSCAPE ARCHITECT.
8.4. IF A TREE OR PALM SETTLES TO AN UNHEALTHY DEPTH WITHIN THE 1-YEAR WARRANTY PERIOD, AS DEEMED BY THE LANDSCAPE ARCHITECT, IT MUST BE RAISED TO THE CORRECT GRADE AT CONTRACTOR'S EXPENSE.



1 TREE BARRICADE DETAIL
SCALE: N/A



2 TREE TRUNK PROTECTION DETAIL
SCALE: N/A

OCT 11, 2021

DESIGNER:
SCOTT MITCHELL STUDIO
181 NORTH MARTEL AVE
LOS ANGELES, CA 90038
(323) 833-9078

LOCAL ARCHITECT:
STUDIO MCHG ARCHITECTURE
7500 NE 4TH COURT
STUDIO 103
MIAMI, FL 33138
(305) 573-2728

LANDSCAPE:
RAYMOND JUNGLES, INC.
2964 AVIATION AVENUE
COCONUT GROVE, FL 33133
(305) 858-6777

OWNER'S REPRESENTATIVE:
HANDCRAFT CONSTRUCTION
MANAGEMENT, INC.
1498 NW 3RD STREET
DEERFIELD BEACH, FL 33442
(954) 418-6344

jungles
RAYMOND JUNGLES INC.
Landscape Architect FASLA



RAYMOND JUNGLES
Lic. # LA0000856

REVS

PROJECT

STAR ISLAND
RESIDENCE

SHEET
TITLE

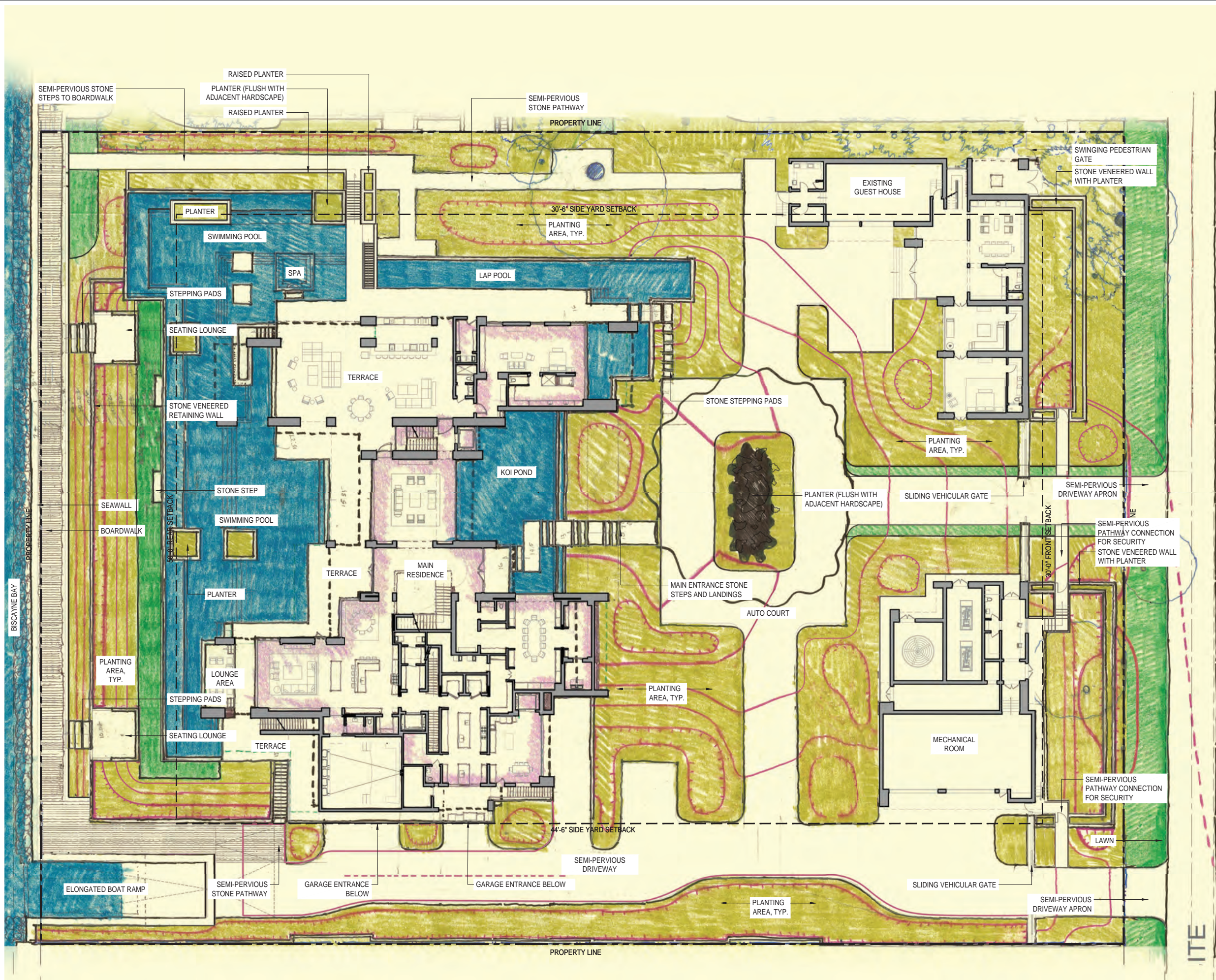
TREE DISPOSITION
NOTES & DETAILS

SCALE

AS NOTED

SHEET
NUMBER

LR.201



LEGEND

PROPERTY LINE

SETBACK

PROPOSED

PLANTING

LAWN

WATER

DESIGNER:

SCOTT MITCHELL STUDIO

181 NORTH MARTEL AVE

LOS ANGELES, CA 90036

(323) 933-9078

LOCAL ARCHITECT:

STUDIO M+C ARCHITECTURE

7500 NE 4TH COURT

STUDIO 103

MIAMI, FL 33138

(305) 573-2728

LANDSCAPE:

RAYMOND JUNGLES, INC.

2964 AVIATION AVENUE

COCONUT GROVE, FL 33133

(305) 858-6777

OWNER'S REPRESENTATIVE:

HANDCRAFT CONSTRUCTION

MANAGEMENT, INC.

1498 NW 3RD STREET

DEERFIELD BEACH, FL 33442

(561) 418-6344

jungles

RAYMOND JUNGLES, INC.

Landscape Architect FASLA

RAYMOND JUNGLES

Lic. # LA0000856

STAR ISLAND RESIDENCE

HARDSCAPE PLAN

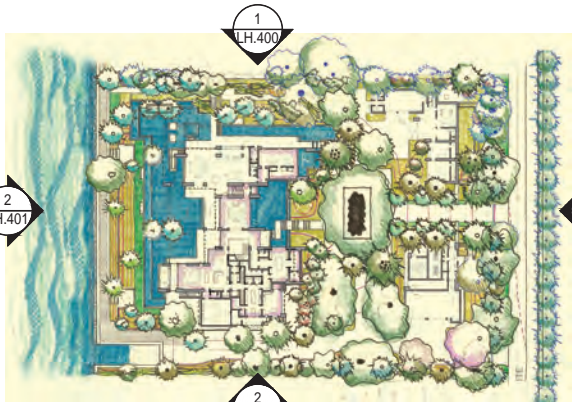
AS NOTED

LH.100

0 8' 16' 32'

SCALE: 1/16" = 1'-0"

N




KEY PLAN (N.T.S.)

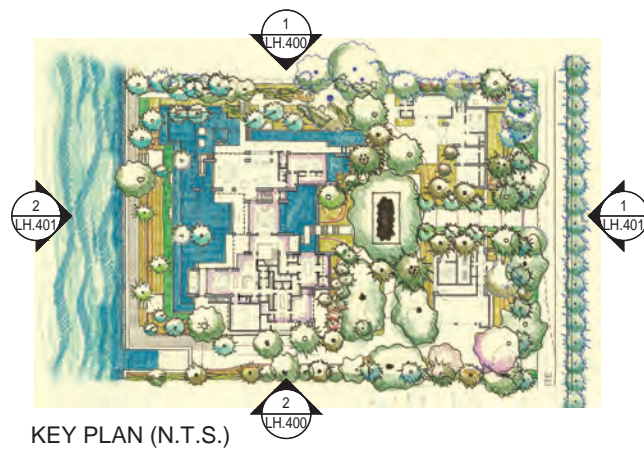


1 NORTH ELEVATION
Scale: 1/16" = 1'- 0"



2 SOUTH ELEVATION
Scale: 1/16" = 1'- 0"

ISSUE:		DRB SUBMITTAL
		OCT 11, 2021
DESIGNER:		SCOTT MITCHELL STUDIO 181 NORTH MARTEL AVE LOS ANGELES, CA 90036 (323) 933-9078
LOCAL ARCHITECT:		STUDIO MC+G ARCHITECTURE 7900 NE 4TH COURT STUDIO 103 MIAMI, FL 33138 (305) 573-2728
LANDSCAPE:		RAYMOND JUNGLES, INC. 2964 AVIATION AVENUE COCONUT GROVE, FL 33133 (305) 858-6777
OWNER'S REPRESENTATIVE:		HANDCRAFT CONSTRUCTION MANAGEMENT, INC. 1498 NW 3RD STREET DEERFIELD BEACH, FL 33442 (561) 418-6344
		jungles RAYMOND JUNGLES, INC. Landscape Architect FASLA
		
		RAYMOND JUNGLES Lic. # LA0000856
REVS:		
PROJECT:		STAR ISLAND RESIDENCE
SHEET TITLE:		HARDSCAPE ELEVATIONS
SCALE:		AS NOTED
SHEET NUMBER:		LH.400



1 EAST ELEVATION
Scale: 1/16" = 1' - 0"



2 WEST ELEVATION
Scale: 1/16" = 1' - 0"

OCT 11, 2021

DESIGNER:
COTT MITCHELL STUDIO
81 NORTH MARTEL AVE
LOS ANGELES, CA 90036
(323) 933-9078

LOCAL ARCHITECT:
STUDIO MC+G ARCHITECTURE
500 NE 4TH COURT
STUDIO 103
MIAMI, FL 33138
(305) 573-2728

LANDSCAPE:
RAYMOND JUNGLES, INC.
964 AVIATION AVENUE
COCONUT GROVE, FL 33133
(305) 858-6777

OWNER'S REPRESENTATIVE:
HANDCRAFT CONSTRUCTION
MANAGEMENT, INC.
198 NW 3RD STREET
DEERFIELD BEACH, FL 33442
(954) 418-6344

jungles
RAYMOND JUNGLES INC.
Landscape Architect FASLA



RAYMOND JUNGLES
Lic. # LA0000856

REVS:

OBJECT:

STAR ISLAND
RESIDENCE

SHEET

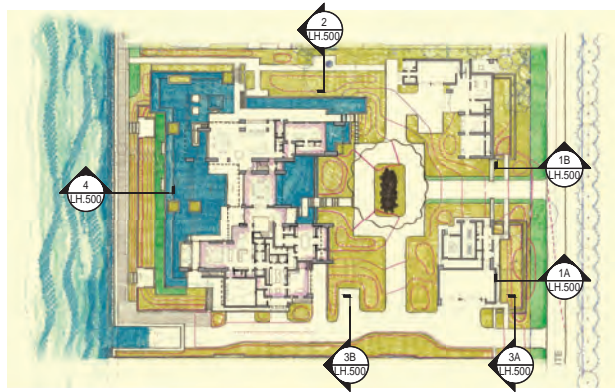
HARDSCAPE ELEVATIONS

SALE:	
-------	--

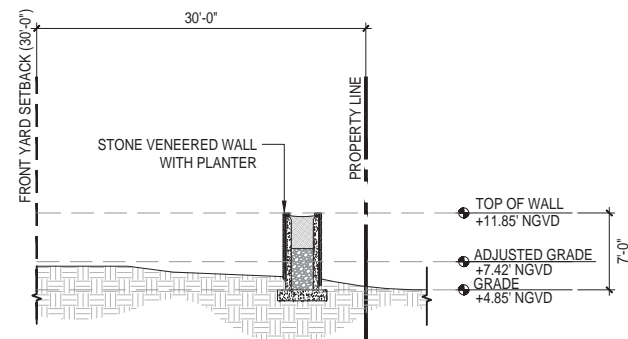
AS NOTED

SHEET

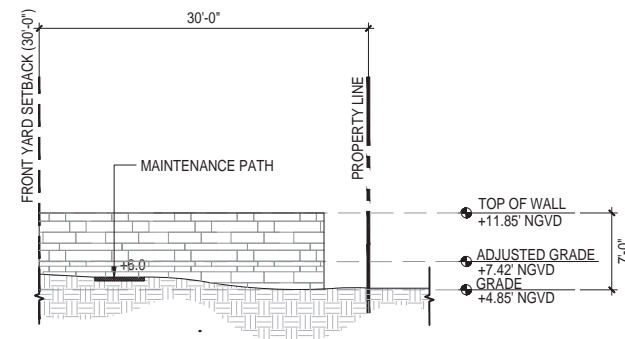
LH.401



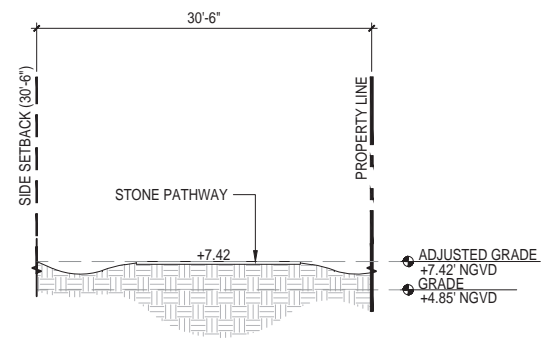
KEY PLAN (N.T.S.)



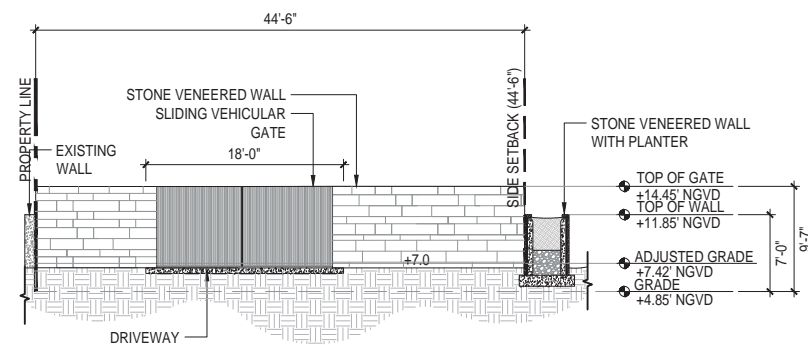
1AB FRONT YARD SECTION
Scale: 1/8" = 1'- 0"



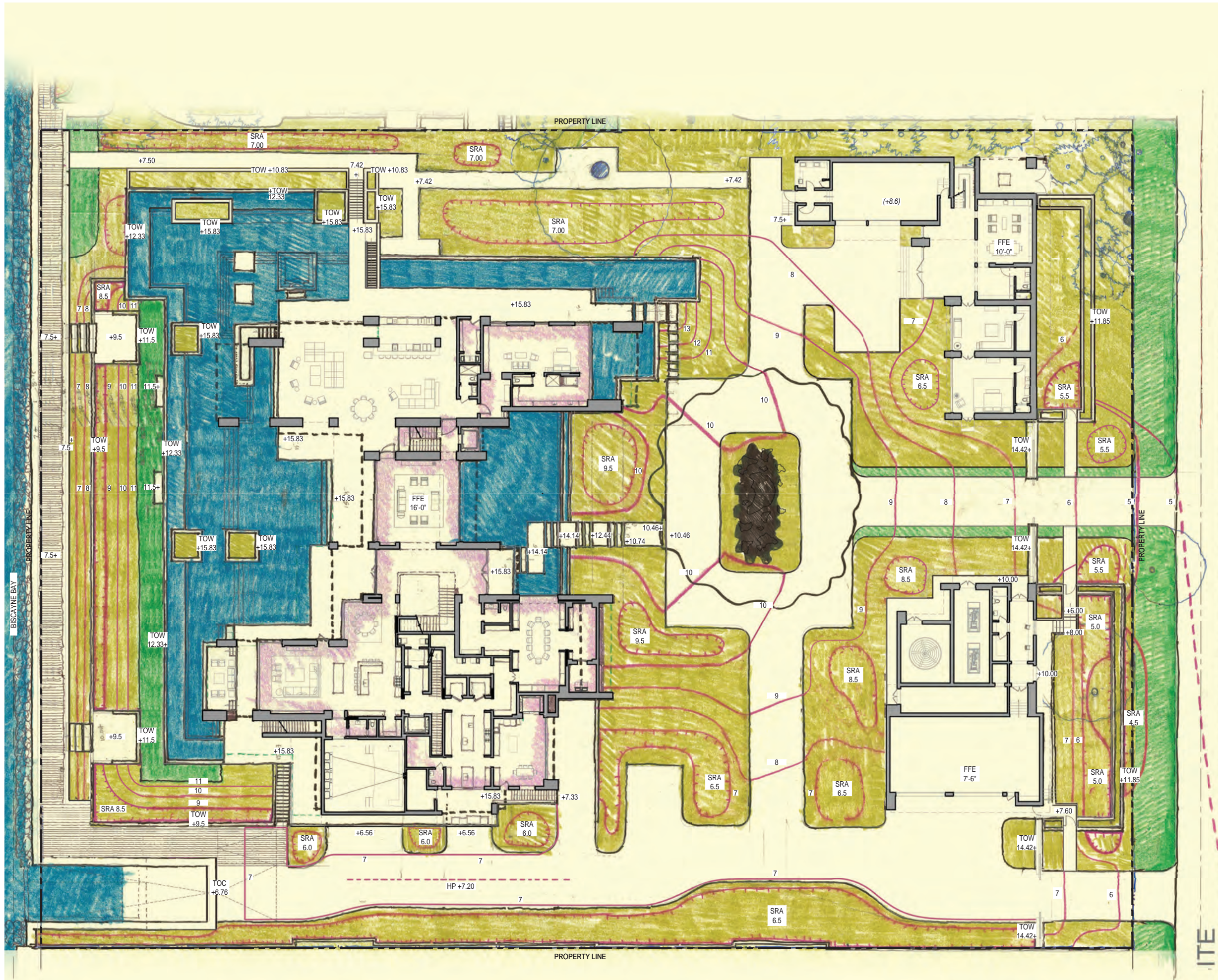
2 SIDE YARD SECTION (NORTH)
Scale: 1/8" = 1' - 0"



3AB SIDE YARD SECTION (SOUTH)
Scale: 1/8" = 1'- 0"



4 REAR YARD SECTION
Scale: 1/8" = 1'-0"



LEGEND

PROPERTY LINE



SHALLOW
RETENTION AREA

DIRECTION OF SLOPE

+ 00.00 NGVD PROPOSED SPOT
ELEVATION

HP HIGH POINT
LP LOW POINT
TC TOP OF CURB
BC BOTTOM OF CURB
TW TOP OF WALL
BW BOTTOM OF WALL
WL WATER LEVEL

PROPOSED

PLANTING



LAWN



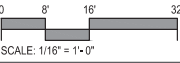
WATER



EXISTING CONTOUR

PROPOSED CONTOUR

1. ALL SHALLOW RETENTION AREAS (SRA) SHALL BE GRADED GRADUALLY TO THE LOW POINT SPECIFIED ON THE PLAN. THESE AREAS WILL CATCH ON SITE WATER FOR PLANT MATERIAL AS WELL AS CREATE THE FIRST BARRIER FOR INFILTRATION BEFORE ENTERING THE STORM WATER SYSTEM.
2. REPORT ANY DISCREPANCIES FROM SURVEY OR OTHERWISE IMMEDIATELY TO THE LANDSCAPE ARCHITECT.
3. CONTRACTOR TO ENSURE POSITIVE DRAINAGE AWAY FROM ALL STRUCTURES.
4. ALL SHRUBS AND GROUND COVER AREAS ARE TO BE 2' BELOW FINISHED LEVEL OF ALL ADJACENT HARDSCAPE (TYPICAL).
5. ALL TURF AREAS TO BE FLUSH WITH ADJACENT HARDSCAPE AREAS AND ENSURE NO TRIPPING HAZARDS.
6. ALL STEP TREADS TO SLOPE AWAY FROM STEP FACE AT A MINIMUM OF 1% UNLESS NOTED OTHERWISE.
7. CONTRACTOR TO TEST PERCOLATION IN ALL SRA'S AND NOTIFY LANDSCAPE ARCHITECT OF ANY ISSUES.
8. CONTRACTOR TO MAINTAIN EROSION CONTROL THROUGHOUT THE CONSTRUCTION PROCESS. LANDSCAPE ARCHITECT TO APPROVE SITE CONDITIONS PRIOR TO REMOVAL OF THESE METHODS.
9. ALL DRAIN INLETS, PIPES, MANHOLES, AND SOAKAWAY LOCATIONS TO BE COORDINATED WITH CIVIL ENGINEER. PLAN IS INDICATIVE OF PREFERRED LOCATIONS.
10. NO GRADING SHALL OCCUR BENEATH THE DRIP LINE OF ANY EXISTING TREE TO REMAIN.
11. CONTRACTOR SHALL BE RESPONSIBLE FOR VERIFYING ALL SPOT ELEVATIONS IN FIELD. ALL QUANTITIES FOR THE MATERIALS NOTED ON GRADING PLANS SHALL BE VERIFIED BY THE CONTRACTOR BY DETAILED TAKEOFFS TO ENSURE THAT THE QUANTITIES GIVEN ARE SUFFICIENT TO FULFILL THE INTENT OF THE LANDSCAPE ARCHITECT. CONTRACTOR SHALL FIELD VERIFY ALL AS-BUILT DIMENSIONS ON-SITE PRIOR TO BID.
12. CONTRACTOR SHALL FIELD VERIFY ALL EXISTING UTILITIES ON-SITE BEFORE CONSTRUCTION BEGINS.



DRB SUBMITTAL

OCT 11, 2021

DESIGNER:
SCOTT MITCHELL STUDIO
181 NORTH MARTEL AVE
LOS ANGELES, CA 90036
(323) 933-9078

LOCAL ARCHITECT:
STUDIO M+C ARCHITECTURE
7900 NE 4TH COURT
STUDIO 103
MIAMI, FL 33138
(305) 573-2728

LANDSCAPE:
RAYMOND JUNGLES, INC.
2964 AVIATION AVENUE
COCONUT GROVE, FL 33133
(305) 858-6777

OWNER'S REPRESENTATIVE:
HANDCRAFT CONSTRUCTION
MANAGEMENT, INC.
1498 NW 3RD STREET
DEERFIELD BEACH, FL 33442
(561) 418-6344

jungles
RAYMOND JUNGLES INC.
Landscape Architect FASLA



RAYMOND JUNGLES
Lic. # LA0000856

REV:

PROJECT:

STAR ISLAND
RESIDENCE

SHEET
TITLE:

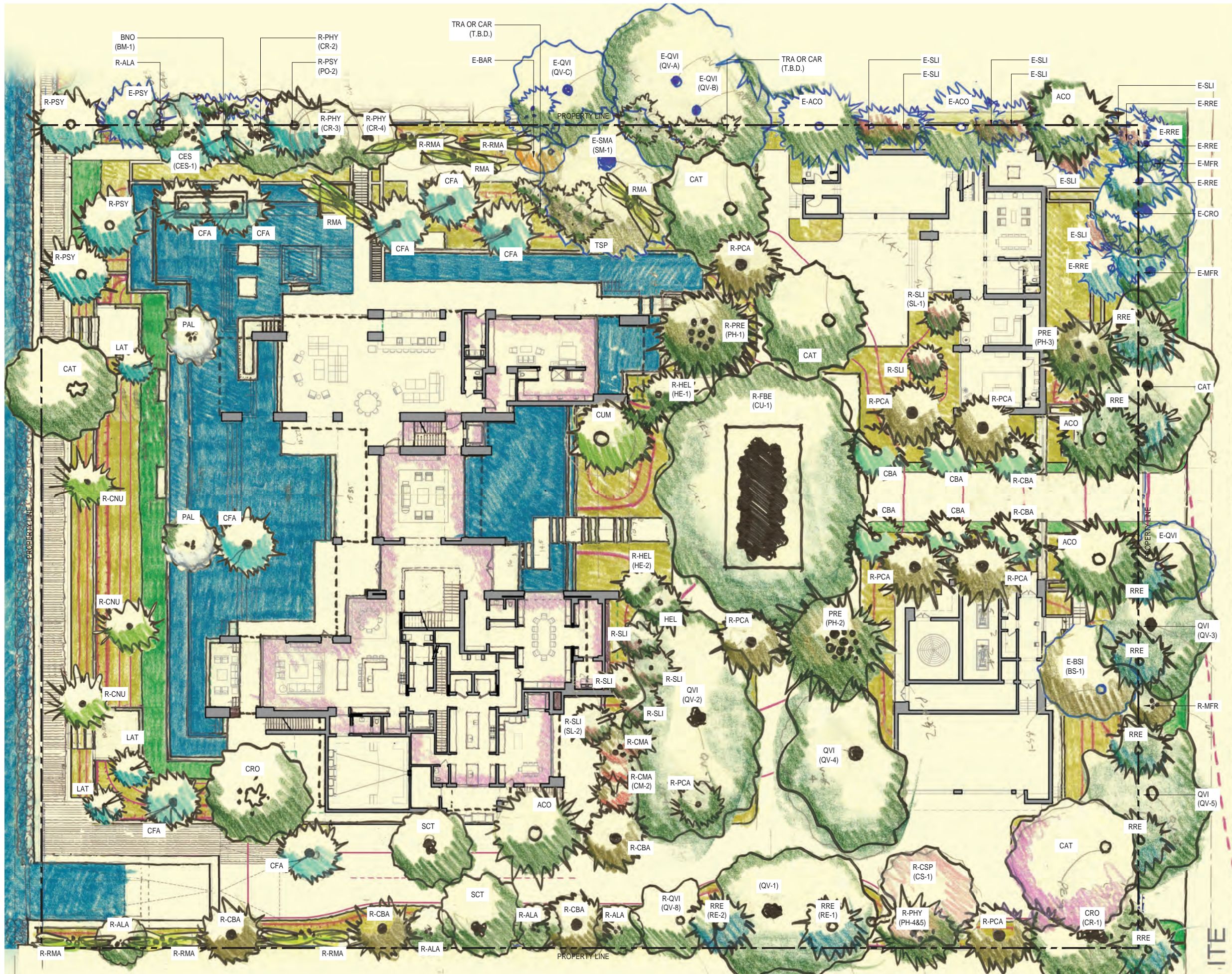
GRADING
PLAN

SCALE:

AS NOTED

SHEET
NUMBER:

LG.100



LEGEND

PROPERTY LINE

PROPOSED

PLANTING

LAWN

WATER

GENERAL NOTES

ALL QUANTITIES IN PLANT MATERIAL SHALL BE VERIFIED BY THE OWNER UPON DELIVERY. ANY QUANTITIES IN PLANT MATERIAL THAT IS NOT USED SHALL BE CREDITED BACK TO THE OWNER OR PLACED ELSEWHERE ON SITE AT THE DIRECTION OF THE OWNER.

CONTRACTORS SHALL ADHERE TO PLANT SPECIFICATIONS AND DETAILS.

CONTRACTOR SHALL WARRANTY ALL PLANT MATERIAL FOR ONE YEAR MINIMUM FROM THE TIME OF SUBSTANTIAL COMPLETION.

REFER TO SHEET LP.300 FOR PLANTING SCHEDULE AND PECIFICATIONS.

ALL PLANT MATERIAL SHALL BE FLORIDA #1 GRADE OR BETTER.

0 8' 16' 32'

SCALE: 1/16" = 1'-0"

N

DRB SUBMITTAL

OCT 11, 2021

DESIGNER:
SCOTT MITCHELL STUDIO
181 NORTH MARTEL AVE
LOS ANGELES, CA 90036
(323) 933-9078

LOCAL ARCHITECT:
STUDIO M+C ARCHITECTURE
7500 NE 4TH COURT
STUDIO 103
MIAMI, FL 33138
(305) 573-2728

LANDSCAPE:
RAYMOND JUNGLES, INC.
2964 AVIATION AVENUE
COCONUT GROVE, FL 33133
(305) 858-6777

OWNER'S REPRESENTATIVE:
HANDCRAFT CONSTRUCTION
MANAGEMENT, INC.
1498 NW 3RD STREET
DEERFIELD BEACH, FL 33442
(954) 418-6344

REV

DATE

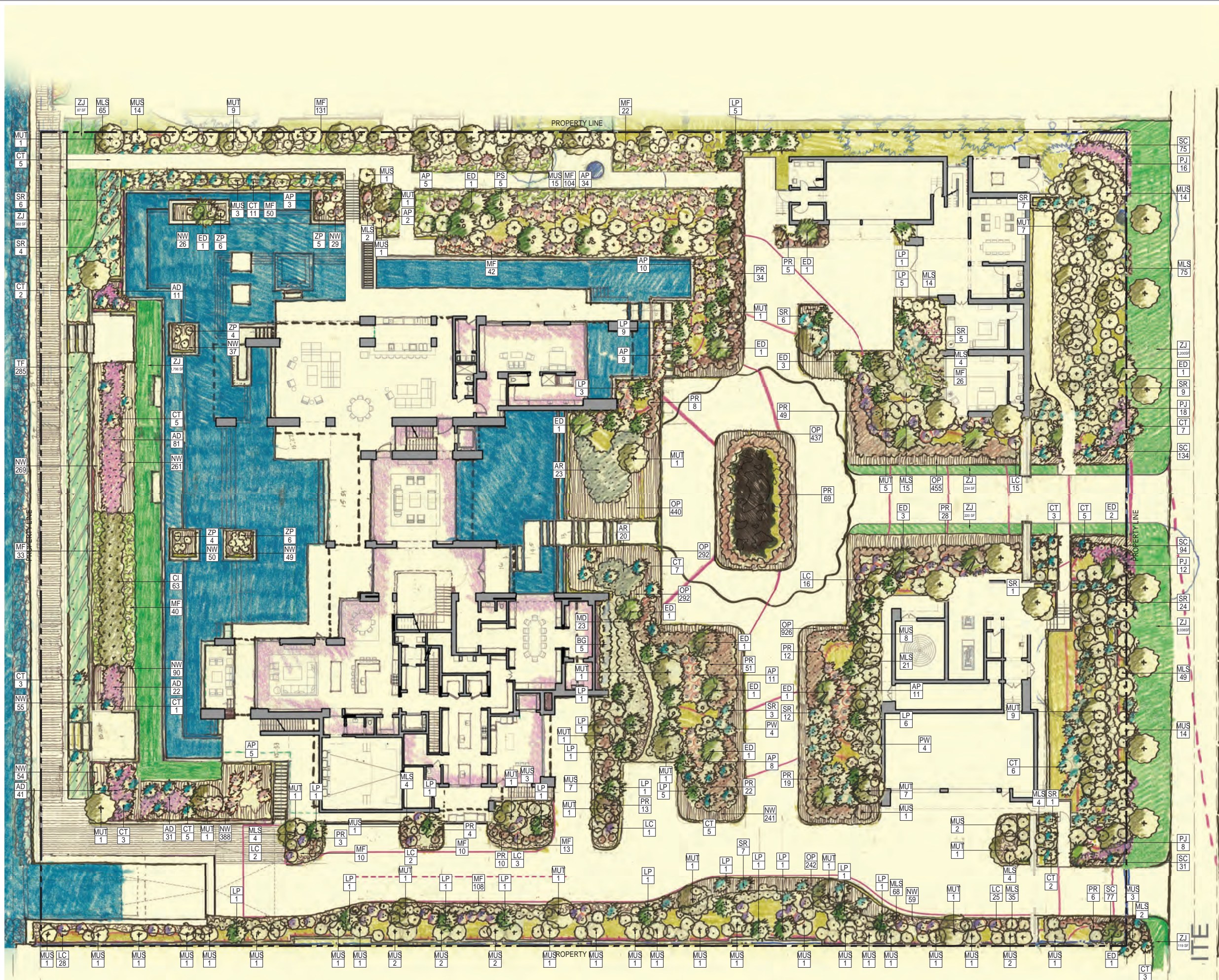
DESCRIPTION

PROJECT

CANOPY PLAN

AS NOTED

LP.100



LEGEND

PROPERTY LINE

PLANTING LABEL XX ##

UNDERSTORY SHRUB

UNDERSTORY PALM

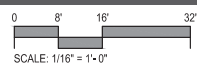
GROUND COVER AREA

LAWN

WATER

GENERAL NOTES

- 1. ALL QUANTITIES IN PLANT MATERIAL SHALL BE VERIFIED BY THE OWNER UPON DELIVERY. ANY QUANTITIES IN PLANT MATERIAL THAT ARE NOT USED SHALL BE CREDITED BACK TO THE OWNER OR PLACED ELSEWHERE ON SITE AT THE DIRECTION OF THE OWNER.
- 2. CONTRACTOR SHALL ADHERE TO PLANT SPECIFICATIONS AND DETAILS.
- 3. CONTRACTOR SHALL WARRANTY ALL PLANT MATERIAL FOR ONE YEAR MINIMUM FROM THE TIME OF SUBSTANTIAL COMPLETION.
- 4. REFER TO SHEET LP.300 FOR PLANTING SCHEDULE AND SPECIFICATIONS.
- 5. ALL PLANT MATERIAL SHALL BE FLORIDA #1 GRADE OR BETTER.



DRB SUBMITTAL

OCT 11, 2021

DESIGNER:
SCOTT MITCHELL STUDIO
181 NORTH MARTEL AVE
LOS ANGELES, CA 90036
(323) 933-9078

LOCAL ARCHITECT:
STUDIO M+C ARCHITECTURE
7500 NE 4TH COURT
STUDIO 103
MIAMI, FL 33138
(305) 573-2728

LANDSCAPE:
RAYMOND JUNGLES, INC.
2964 AVIATION AVENUE
COCONUT GROVE, FL 33133
(305) 858-6777

OWNER'S REPRESENTATIVE:
HANDCRAFT CONSTRUCTION
MANAGEMENT, INC.
1498 NW 3RD STREET
DEERFIELD BEACH, FL 33442
(888) 418-6344

jungles
RAYMOND JUNGLES INC
Landscape Architect FASLA



RAYMOND JUNGLES
Lic. # LA0000856

REV:

PROJECT:

STAR ISLAND
RESIDENCE

SHEET
TITLE:

UNDERSTORY
PLAN

SCALE:

AS NOTED

SHEET
NUMBER:

LP.200

jungles

4-6 Star Island - Proposed Plant List

Star Island, FL

September 29, 2021

EXISTING TREES TO REMAIN				
QTY	SYM	Botanical Name	Common Name	Specification
1	BSI	Bursera simaruba	Gumbo Limbo	Existing to remain on-site
1	QVI	Quercus virginiana	Live Oak	Existing to remain on-site
1	CDI	Coccoloba diversifolia	Pigeon Plum	Existing to remain on-site
1	CRO	Clusia rosea	Pitch Apple	Existing to remain on-site
1	MFR	Myrsanthes fragrans	Simpson's Stopper	Existing to remain on-site
1	SMA	Swietenia mahagoni	Nahogany	Existing to remain on-site
1	BAR	Bulnesia arborea	Verawood	Existing to remain on-site
RELOCATED TREES / PALMS				
QTY	SYM	Botanical Name	Common Name	Specification
1	R-BNO	Bismarckia nobilis	Bismarck Palm	Relocated from on-site, #418
1	R-CES	Conocarpus erectus var. sericeus	Silver Buttonwood	Relocated from on-site, #644
1	R-CSP	Chorisia speciosa	Silk Floss Tree	Relocated from on-site, #634
1	R-EGR	Encephalartos gratus	Same	Relocated from on-site, #RU1664
1	R-FBE	Ficus benghalensis	Banyan	Relocated from on-site, #530
1	R-MFR	Myrsanthes fragrans	Simpson's Stopper	Relocated from on-site, #601
1	R-FRU	Phoenix rupicola	Cliff Date Palm	Relocated from on-site, #531
2	R-CMA	Chambeyronia macrocarpa	Red Feather Palm	Relocated from on-site, #606, #629
2	R-HEL	Heterospatha elata	Sagusi Palm	Relocated from on-site, #605, 620
2	R-PSP	Phoenix spp.	Date Palm	Relocated from on-site, #533, 534
2	R-RRE	Roystonea regia	Royal Palm	Relocated from on-site, #637,638
3	R-SLI	Satakentia lukuensis	Satakentia Palm	Relocated from on-site, #604, 626, #627
3	R-CNU	Cocos nucifera	Coconut Palm	Relocated from on-site, #639-640, 642
4	R-CRO	Clusia rosea	Autograph Tree	Relocated from on-site, #422, 506, 521, 628
3	R-PRE	Phoenix reclinata hybrid	Date Palm Hybrid	Relocated from on-site, 539, 540, 541
4	R-PDA	Phoenix dactylifera 'Medjool'	Medjool Date Palm	Relocated from on-site, #542, 544-546
5	R-ALA	Amphitecna latifolia	Black Calabash	Relocated from on-site, #602, 632,633,635,636
5	R-RMA	Ravensala madagascariensis	Travelers Palm	Relocated from on-site, #621-625
11	R-ICA	Phoenix Island Date Palm	Canary Island Date Palm	Relocated from on-site, #423-431, 503, 524, 524, 529
1	R-ALA	Amphitecna latifolia	Black Calabash	Relocated from on-site, #603, to be laid out on site by LA
1	R-BNO	Bismarckia nobilis	Bismarck Palm	Relocated from on-site, #400, to be laid out on site by LA
1	R-CNU	Cocos nucifera	Coconut Palm	Relocated from on-site, #641, to be laid out on site by LA
1	R-DLU	Dypsis lutescens	Areca Palm	Relocated from on-site, #647, to be laidout on site by LA
4	R-LIA	Ligustrum japonicum	Ligustrum	Relocated from on-site, # 421, to be laid out on site by LA
4	R-LIA	Latania lantanoides	Red Lutan Palm	Relocated from on-site, # 423-431, 503, 524, to be laid out by on site LA
9	R-PCA	Phoenix canariensis	Canary Island Date Palm	Relocated from on-site, #404-407, 415, 429, 515, 527, 528, To be laid out on site by LA
4	R-PDA	Phoenix dactylifera 'Medjool'	Medjool Date Palm	Relocated from on-site, # 543, 547-549, , to be laid out on site by LA
3	R-PRE	Phoenix reclinata hybrid	Senegal Date Palm	Relocated from on-site, #414, #426, #516, to be laid out on site by LA
2	R-PRE	Phoenix reclinata sp.	Same	Relocated from on-site, #533, #534, to be laid out on site by LA
1	R-PSP	Plumeria spp.	Frangipani	Relocated from on-site, # 416, to be laid out on site by LA
5	R-RRE	Roystonea regia	Royal Palm	Relocated from on-site, #536-538, #637, #638, to be laidout on site by LA
TREES				
QTY	SYM	Botanical Name	Common Name	Specification
7	QVI	Quercus virginiana	Live Oak	(6) Relocated from 10-11 Star(QV-1-5, QV-8) and (1) 4" DBH., 16" HT. x 8' SPR,min.
7	TBD		Canopy Tree	4" DBH., 16" HT. x 8' SPR, min.
2	CRO	Clusia rosea	Autograph Tree	Specimen, multi-trunk, 18-25' HT., x 16" SPR.
2	PAL	Plumeria alba	White Frangipani	Specimen, 4" DBH., 16" HT. x 8' SPR. min.
9	CPT	TBD	Canopy Tree	4" DBH., 16" HT. x 8' SPR. min. to be laid out on site by LA
PALMS				
QTY	SYM	Botanical Name	Common Name	Specification
3	ACO	Attalea cohune	American Oil Palm	Specimen, 25'-35' HT.
1	CUM	Corypha umbraculifera	Tallpot Palm	Relocated from 7 Star
4	CBA	Copernicia baileyana	Bailey Palm	Match existing to be relocated from 7 Star
2	CBI	Copernicia baileyana	Bailey Palm	Relocated from 7 Star
7	RRE	Roystonea regia	Royal Palm	To match palms opposite of the street
7	CFA	Copernicia fallensis	Copernicia Palm	Specimen, 15'-20' HT.
1	OFI	Copernicia fallensis	Smaller, 8'-10' HT.	
3	RMA	Ravensala madagascariensis	Travelers Palm	To match relocated from on-site.
3	LAT	Latania loddigesii	Blue Lutan Palm	Specimen, 10'-15' HT.
4	SLI	Satakentia lukuensis	Satakentia Palm	20'-25' HT.
20	TSP	Thrinax & Coccolrinax sp.	Same	Specimen, 10'-15' HT.
UNDERSTORY TREES				
QTY	SYM	Botanical Name	Common Name	Specification
61	MUT			Misc. Understory Trees to be selected from list below
AOD		Aglaia odorata	Chinese Perfume Tree	12' HT. x 6' SPR. x 2" DBH. (minimum)
CDI		Coccoloba diversifolia	Pigeon Plum	12' HT. x 6' SPR. x 2" DBH. (minimum)
EFO		Eugenia foetida	Spanish Stopper	12' HT. x 6' SPR. x 2" DBH. (minimum)
GDI		Guapira discolor	Isloly	12' HT. x 6' SPR. x 2" DBH. (minimum)
KFE		Krugiodendron ferreum	Black Ironwood	12' HT. x 6' SPR. x 2" DBH. (minimum)
CES		Conocarpus erectus 'Sericeus'	Silver Buttonwood	12' HT. x 6' SPR. x 2" DBH. (minimum)
CWI		Canella winterana	Wild Cinnamon Bark	12' HT. x 6' SPR. x 2" DBH. (minimum)
ERI		Eugenia rhombica	Red Stopper	Multi-trunk, 12' HT. x 6' SPR. x 2" DBH. (minimum)
GLU		Gymnanthes lucida	Crabwood	12' HT. x 6' SPR. x 2" DBH. (minimum)
GSA		Guaiacum sanctum	Lignum Vitae	Specimen, 12' HT. x 12' SPR. x 2" DBH. (minimum)
KFE		Krugiodendron ferreum	Black Ironwood	12' HT. x 6' SPR. x 2" DBH. (minimum)
MFR		Myrsanthes fragrans	Simpson's Stopper	12'-16" HT. x 6' SPR. x 2" DBH. (minimum)
24	NUT			10' HT. x 1.5" DBH. Misc. Native Understory Trees to be laid out on site by LA
UNDERSTORY PALMS				
QTY	SYM	Botanical Name	Common Name	Specification
70	CT			Coccothrinax species to be selected from list below
CA		Coccothrinax alta	Silver Palm	9'-13' CT.
CAR		Coccothrinax argentata	Florida Silver Palm	7'-15' CT.
CAG		Coccothrinax argentea	Silver Thatch Palm	4'-5' OA HT.
CF		Coccothrinax fragrans		9'-13 CT.
51	LP	Rhapis exelba	Lady Palm	Clusters

jungles

4-6 Star Island - Proposed Plant List

Star Island, FL

September 29, 2021

UNDERSTORY SHRUBS				
QTY	SYM	Botanical Name	Common Name	Specifications
19	ED			Encephalartos, Dioon, and Ceratazamia to be selected from list below
	CH	Ceratozamia hildae		Specimen
	CM	Ceratozamia mexicana	Mexican Horncone	Specimen
	DM	Dioon meliae	Cycad	Specimen
	DME	Dioon menziesii	Golden Oaxacan Dioon	Specimen
	DSP	Dioon spinulosum	Mexican Cycad	Specimen
	EF	Encephalartos ferox		Specimen
	EG	Encephalartos gratus		Specimen
	EH	Encephalartos hildebrandtii		Specimen
92	LC	Leuca coccinea 'Rubra'	West Indian Wolly	7 Gal.
364	MLS		Misc. Native Low Understory Shrubs to be selected from list below	
	CI	Chrysobalanus icaco 'Horizontal'	Cocoplum	3-7 Gal.; 24"-36" HT.; Full
	CB	Cardia bahamensis	Bahama Manjack	3-7 Gal.; 24"-36" HT.; Full
	HA	Heliotropium angiospermum	Scorpion Tail	3-7 Gal.; 24"-36" HT.; Full
	PN	Psychotria nervosa	Dwarf Wild Coffee	3-7 Gal.; 24"-36" HT.; Full
	ZF	Zamia floridana	Coontie	3-7 Gal.; 24"-36" HT.; Full
116	MLS		Misc. Native Understory Shrubs to be selected from list below	
	AE	Ardisia escallonioides	Marlberry	7 Gal.
	CW	Canella winterana	Wild Cinnamon Bark	7 Gal.
	CC	Capparis cynophallophora	Jamaican Caper	7 Gal.
	GL	Gymnanthes lucida	Crabwood	7 Gal.
	RA	Randia aculeata	Wild Coffee	7 Gal.
			White Indigo Berry	7 Gal.
5	PS	Ptychosperma schefferi	Same	15 Gal.
86	SR	Serenoa repens	Silver Saw Palmetto	3' x 3'
ACCENTS				
QTY	SYM	Botanical Name	Common Name	Specification
186	AD	Ardisnea 'Dean'	Bronzeleaf	1 Gal., @24" O.C., Full
43	AR	Abocasia 'Regal Shields'	Elephant Ear	3 Gal., @24" O.C., Full
98	AP	Alpinia purpurata 'Pink'	Ginger	7 Gal.
5	BG	Beaumontia grandiflora	Heralds Trumpet	7 Gal.
29	CI	Chrysobalanus icaco 'Horizontal'	Cocoplum	3 Gal. @36" O.C., Full
23	MO	Monstera deliciosa	Swiss Cheese Vine	3 Gal. @24" O.C., Full
333	PR	Philodendron 'Boja Congo'	Red Congo Philodendron	7 Gal. @36" O.C., Full
8	PW	Philodendron 'Weeks Red Hybrid'	Same	7 Gal.
48	PJ	Portea petropolitana 'Jungles'	Same	3 Gal. @18" O.C., Full
25	ZP	Zamia pumila	Coontie	3 Gal., 18" HT., Full
GROUNDCOVERS				
QTY	SYM	Botanical Name	Common Name	Specification
589	MF		Misc. Native Fern Matrix	to be selected from list below
194	AC	Adiantum capillus-veneris	Venus Hair Fern	3 Gal. @ 24" O.C.
62	BS	Blechnum serrulatum	Swamp Fern	3 Gal. @ 24" O.C.
47	DL	Drosera ludoviciana	Southern Shield Fern	3 Gal. @ 24" O.C.
286	NE	Nephrolepis exaltata	Boston Fern	3 Gal. @ 24" O.C.
4,868	NW	Native Wild Flowers TBD		1 Gal. @ 12" O.C.
3,084	OP	Ophiopogon planiscapus	Mondo Grass	1 Gal. @ 12" O.C., Full
414	SC	Seasonal color TBD		1 Gal. @ 12" O.C., Full
616	TF	Tripsacum floridana	Florida Gama Grass	3 Gal., @24" O.C., Full
SOD				
QTY	SYM	Botanical Name	Common Name	Specification
6,996	ZJ	Zoysia japonica	Zoysia Grass	Solid Sod, Quantity shown in square feet

1. In addition to the above plant list and specifications there is to be an additional \$10,000.00 wholesale plant allowance - Landscape Architect to select accent specimens during nursery visits.
Landscape Architect to lay out accents plants in the field.
2. Landscape contractor to provide photographs of all trees & palms for Landscape Architect's approval with bid.
3. Landscape contractor to coordinate installation with Landscape Architect at least 1 month prior to installation date.
4. All plants to be laid out on site by Landscape Architect.

jungles

4-6 Star Island

Miami Beach, FL

September 29, 2021

Tree Mitigation Chart

Total Tree D.B.H. Removed Requiring Mitigation (inches)	148
Trees Required to complete Mitigation Requirement (16' HT. x 8' SPR.; 4" DBH. Minimum)	25
Proposed Trees with 16' HT. x 8' SPR.; 4" D.B.H. (minimum) specifications	25
Total Palms Removed Requiring Mitigation Tree replacement on a 1:1 basis (12' HT. x 6' SPR.; 2" D.B.H. minimum)	18
Proposed Trees with 12' HT. x 6' SPR.; 2" D.B.H. (minimum) specifications	54
Required minimum number of Tree Species (41 or greater replacement Trees)	6

CITY OF MIAMI BEACH LANDSCAPE LEGEND		
INFORMATION REQUIRED TO BE PERMANENTLY AFFIXED TO PLANS		
ZONING DISTRICT	RS-1	LOT AREA 120,000 SF ACRES 2.75
	REQUIRED/ ALLOWED	PROVIDED
LAWN AREA CALCULATION		
A. MAXIMUM LAWN AREA (SOD) PERMITTED= 50 % X 60,000 S.F. = 30,000 SF	30,000 SF	2,927 SF
TREES		
A. TREES REQUIRED PER NET LOT ACRE	N/A	N/A
TREES ON FRONT YARD	2	17
TREES ON BACK YARD	3	3
TREES IN EXCESS OF 6,000 SF LOT (1 TREE X 1,000 SF)	114	
TOTAL TREES ON LOT	119	119
B. 30% NATIVES REQUIRED: 119 X 30% = 36	36	101
C. 50% LOW MAINTENANCE / DROUGHT AND SALT TOLERANT REQUIRED: 119 X 50% = 60	60	101
D. STREET TREES (MAXIMUM AVERAGE SPACING OF 20' O.C.) 300 LF / 20' = 15	15	15
E. STREET TREE SPECIES ALLOWED DIRECTLY BENEATH POWER LINES: (MAXIMUM AVERAGE SPACING OF 20' O.C.):	N/A	N/A
SHRUBS		
A. NUMBER OF SHRUBS REQUIRED: SUM OF LOT AND STREET TREES REQUIRED 134 X 12 = 1,608	1,608	2,685
B. 50% NATIVE SHRUBS REQUIRED: 1,608 X 50% = 804	804	1,461
LARGE SHRUBS OR SMALL TREES		
A. LARGE SHRUBS OR SMALL TREES (10% OF REQUIRED SHRUBS) 1,608 X 10% = 161	161	318
B. 50% NATIVE LARGE SHRUBS OR SMALL TREES REQUIRED: 161 X 50% = 80	80	202

ISSUE

DRB SUBMITTAL

OCT 11, 2021

DESIGNER:
SCOTT MITCHELL STUDIO
181 NORTH MARTEL AVE
LOS ANGELES, CA 90036
(323) 933-9078

LOCAL ARCHITECT:
STUDIO M+C ARCHITECTURE
7500 NE 4TH COURT
STUDIO 103
MIAMI, FL 33138
(305) 573-2728

LANDSCAPE:
RAYMOND JUNGLES, INC.
2964 AVIATION AVENUE
COCONUT GROVE, FL 33133
(305) 858-6777

OWNER'S REPRESENTATIVE:
HANDCRAFT CONSTRUCTION
MANAGEMENT, INC.
1498 NW 3RD STREET
DEERFIELD BEACH, FL 33442
(564) 416-6344

jungles
RAYMOND JUNGLES INC
Landscape Architect FASLA



RAYMOND JUNGLES
Lic. # LA0000856

REVS:

PROJECT

STAR ISLAND
RESIDENCE

SHEET

TITLE

PLANTING
SCHEDULE /
MITIGATION CHART/
LANDSCAPE LEGEND

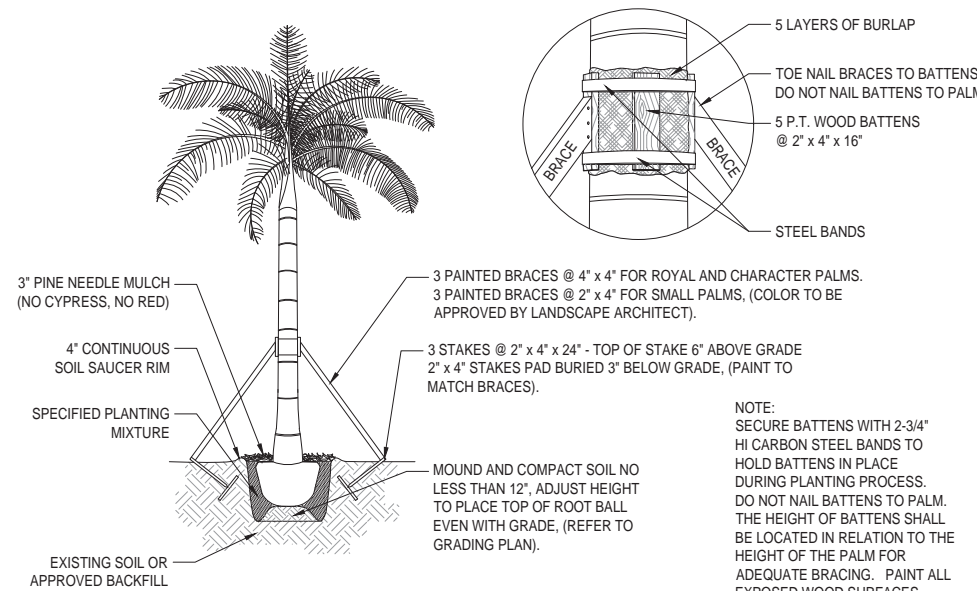
SCALE

AS NOTED

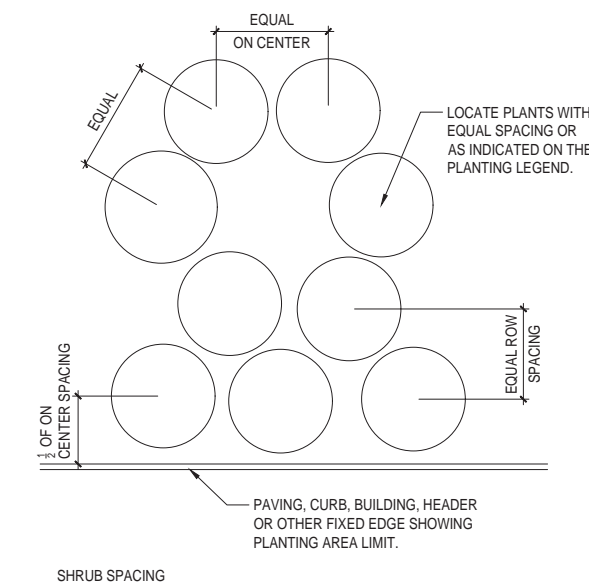
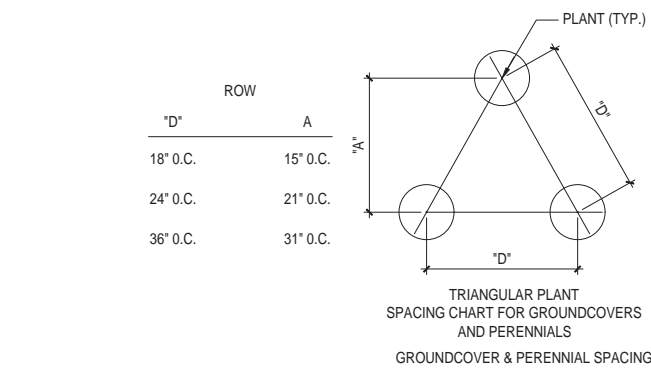
SHEET

NUMBER

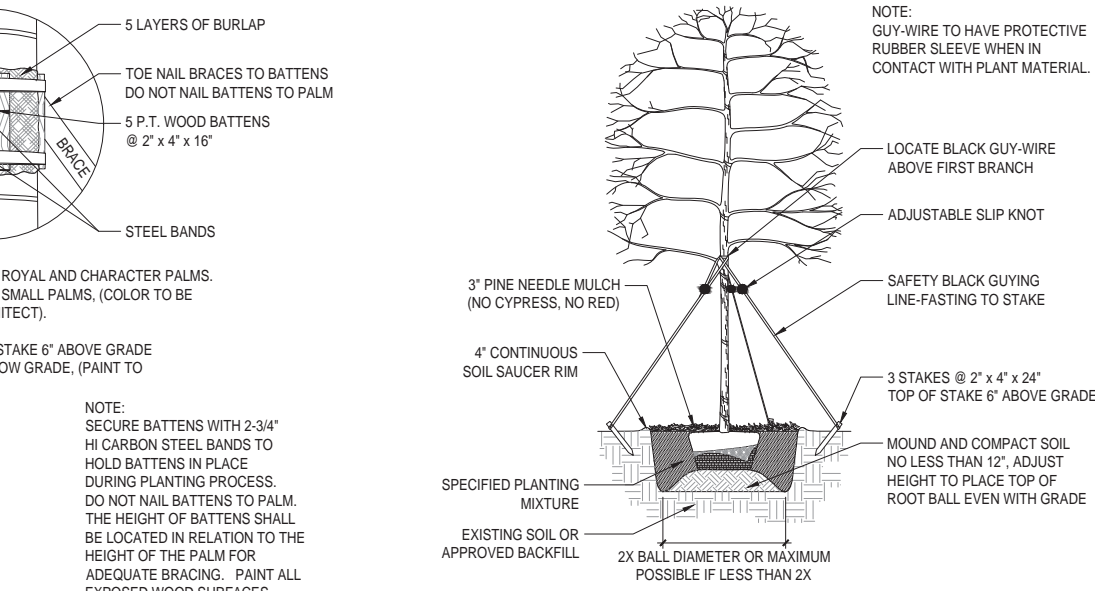
LP.300



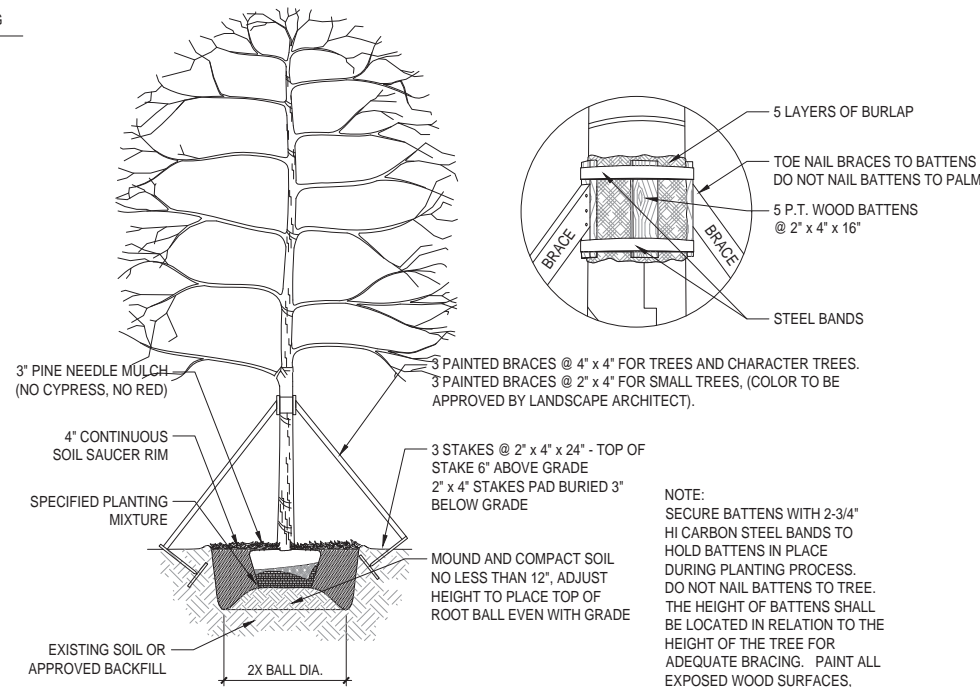
1 PALM PLANTING AND STAKING DETAIL
SCALE: 3/32" = 1'- 0"



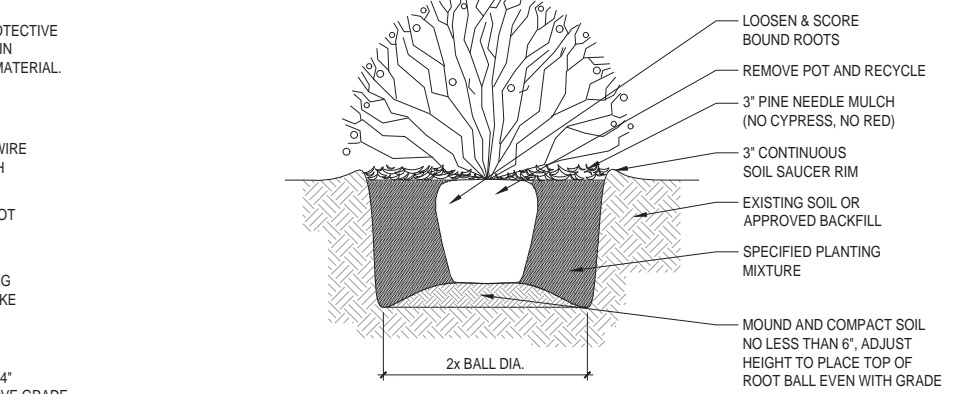
5 PLANT & SHRUB SPACING DETAIL
SCALE: 3/32" = 1'- 0"



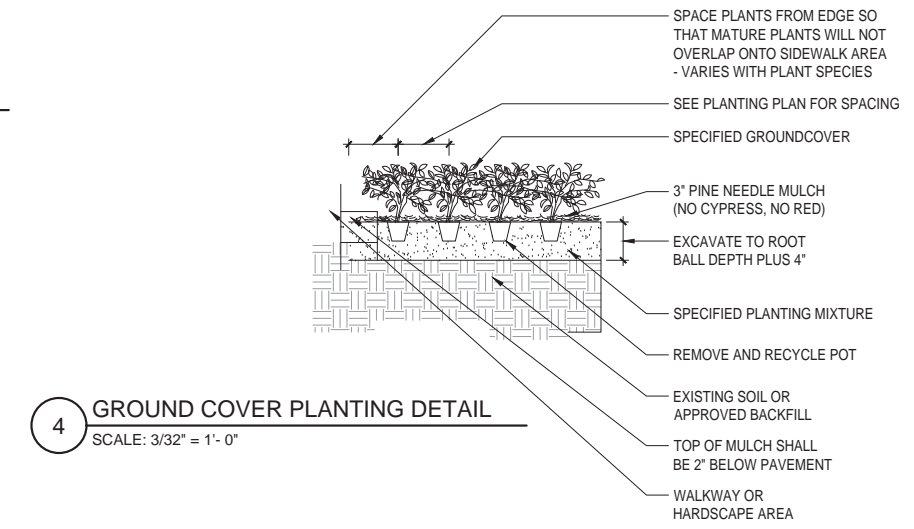
2 UNDERSTORY TREE PLANTING AND STAKING DETAIL
SCALE: 3/32" = 1'- 0"



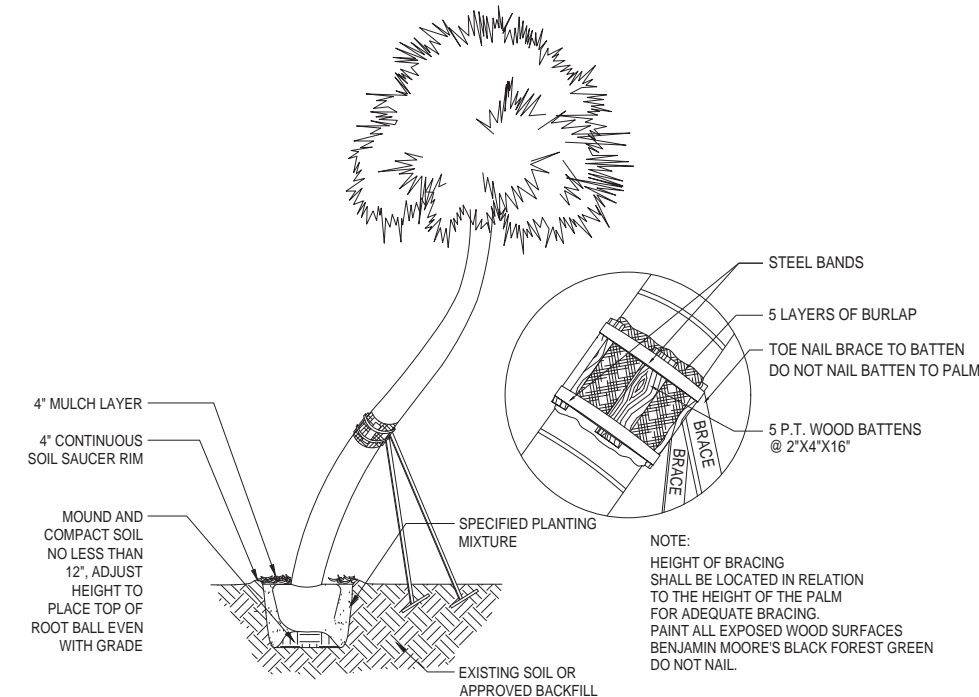
6 TREE PLANTING AND STAKING DETAIL
SCALE: 3/32" = 1'- 0"



3 SHRUB PLANTING DETAIL
SCALE: 3/32" = 1'- 0"



4 GROUND COVER PLANTING DETAIL
SCALE: 3/32" = 1'- 0"



7 CHARACTER PALM PLANTING AND STAKING DETAILS
SCALE: N/A

GENERAL LANDSCAPE NOTES AND SPECIFICATIONS

1.

LANDSCAPE CONTRACTOR SHALL BECOME FAMILIAR WITH THE SCOPE OF WORK AS WELL AS THE SITE, DIGGING CONDITIONS, AND ANY OBSTACLES PRIOR TO SUBMITTING A BID.
2.

LANDSCAPE CONTRACTOR SHALL PROVIDE AN INSTALLATION SCHEDULE TO THE GENERAL CONTRACTOR AND LANDSCAPE ARCHITECT FOR REVIEW AND APPROVAL.
3.

LANDSCAPE CONTRACTOR SHOULD VERIFY ALL ESTIMATED QUANTITIES OF MATERIAL SHOWN ON THE LANDSCAPE ARCHITECT'S DRAWINGS PRIOR TO SUBMITTING A BID.
4.

PLANT PLAN SHALL TAKE PRECEDENCE OVER PLANTING LIST IN CASE OF DISCREPANCIES.
5.

ALL PLANT MATERIAL SYMBOLS SHOWN ON LANDSCAPE PLANS SHALL BE CONSIDERED DIAGRAMMATIC AND SHOULD BE ADJUSTED IN THE FIELD BY LANDSCAPE CONTRACTOR TO AVOID ALL UTILITIES AND ALL OTHER OBSTRUCTIONS, AFTER CONSULTING THE LANDSCAPE ARCHITECT.
6.

ALL SIZES SPECIFIED FOR PLANT MATERIAL ON THE PLAN AND PLANT LIST SHALL BE CONSIDERED MINIMUM.
7.

ALL PLANT MATERIAL MUST MEET OR EXCEED THE SPECIFIED MINIMUM REQUIREMENTS FOR BOTH HEIGHT AND SPREAD. MEASURE ALL INSTALLED PLANTS AND COMPARE AGAINST SPECIFICATIONS.
8.

ANY SPECIFIC REQUIREMENTS SUCH AS SPECIFIC SHAPE, CHARACTER, NUMBER OF TREE TRUNKS, PLANT SOURCE, TRANSPORTING, AND OR SPECIAL BRACING NOTED ON THE PLAN OR PLANT LIST, WILL REQUIRE APPROVAL AND OR COORDINATION WITH THE LANDSCAPE ARCHITECT.
9.

NO CHANGE OR SUBSTITUTION SHALL BE MADE WITHOUT PRIOR APPROVAL OF THE LANDSCAPE ARCHITECT.
10.

ALL MATERIAL SHALL BE SUBJECT TO AVAILABILITY AT TIME OF INSTALLATION. SUBSTITUTIONS MAY BE MADE AFTER CONSULTATION WITH THE LANDSCAPE ARCHITECT
11.

ALL TREES, PALMS, SHRUBS AND GROUND COVERS SHALL BE GUARANTEED FOR A PERIOD OF 12 MONTHS FROM DATE OF FINAL ACCEPTANCE.
12.

CHANGES MAY OCCUR DURING THE NORMAL COURSE OF IMPLEMENTATION. VERBAL CHANGE ORDERS WILL NOT BE HONORED. ANY CHANGES MUST BE SUBMITTED TO THE LANDSCAPE ARCHITECT IN WRITING AS A CHANGE ORDER TO BE REVIEWED AND APPROVED IN WRITING BY OWNER/CLIENT.
13.

LANDSCAPE CONTRACTOR SHALL LOCATE AND VERIFY ALL UNDERGROUND UTILITIES OR STRUCTURES PRIOR TO DIGGING. LANDSCAPE CONTRACTOR SHALL REPAIR ALL DAMAGES TO UNDERGROUND UTILITIES, AND OR CONSTRUCTION CAUSED BY LANDSCAPE INSTALLATION, AT NO COST TO THE OWNER.
14.

LANDSCAPE CONTRACTOR SHALL COORDINATE WITH THE GENERAL CONTRACTOR, THE REMOVAL OF ALL BUILDING CONSTRUCTION DEBRIS AND FOREIGN MATERIAL PRIOR TO INSTALLATION OF ANY PLANT MATERIAL.
15.

SITE PREPARATION SHOULD INCLUDE THE ERADICATION AND REMOVAL OF ANY WEEDS OR GRASS, REMOVAL AND CLEAN UP OF ANY DEAD MATERIAL AND ROUGH AND FINISH GRADING PER SPECS AND OR LANDSCAPE PLANS.
16.

FOR PLANT MATERIAL DESIGNATED TO BE REMOVED, THE ENTIRE ROOT SYSTEM SHALL BE DUG AND REMOVED FROM THE SITE.
17.

ALL PLANTING AREAS SHALL BE EXCAVATED TO A MINIMUM OF 6" FOR GROUNDCOVERS AND MORE THAN 12" FOR SHRUBS, TREES, AND PALMS, AND SHOULD RECEIVE PLANTING SOIL TYPE 1(REFER TO SOIL SPECIFICATIONS LP. 402) (COARSE SAND 70%, FLORIDA PEAT 20%, PINE BARK 10% FINAL TESTED ORGANIC MATTER BETWEEN 1.5% & 2.5% (BY DRY WEIGHT). SUBMIT ALL TESTING DATA FOR APPROVAL BY LANDSCAPE ARCHITECT.
18.

ALL PLANT MATERIAL SHALL BE FLORIDA NO. 1 OR BETTER. FLORIDA DEPARTMENT OF AGRICULTURE GRADES AND STANDARDS, PARTS I & II, 1975, RESPECTIVELY.
19.

ALL TREES SHALL BE STAKED IN A GOOD WORKMANLIKE MANNER. NO NAIL STAKING PERMITTED. (REFER TO BRACING NOTES AND PLANTING DETAILS)
20.

AFTER REMOVAL OR RELOCATION OF EXISTING TREES AND PALMS, ALL REMAINING HOLES SHALL BE BACK FILLED AROUND AND UNDER ROOT BALL WITH WASHED BEACH SAND. SOD DISTURBED AREA, IF REQUIRED. ALL SHRUB BEDS TO BE INSTALLED WITH WASHED BEACH SAND. (SEE SPEC)
21.

ALL TREES, PALMS, SHRUBS AND GROUND COVER PLANTS SHALL BE FERTILIZED AT INSTALLATION, WITH LONG LASTING FERTILIZER, ACCORDING TO MANUFACTURERS' RECOMMENDATIONS AND BASED ON EXISTING SOIL TEST.
22.

ALL EXISTING PLANT MATERIAL TO REMAIN, SHALL BE PROTECTED DURING ALL CONSTRUCTION PHASES. ANY PLANT MATERIAL SCARRED OR DESTROYED DESIGNATED TO REMAIN MUST BE REPLACED AT THE CONTRACTOR'S EXPENSE WITH SIMILAR SPECIES SIZE AND QUALITY.
23.

ALL TREES ON SOD AREA SHALL RECEIVE A HARDWOOD / PINE NEEDLE MULCH MIX RING 2' IN DIAMETER TYPICAL. MULCH TO BE APPROVED BY LANDSCAPE ARCHITECT PRIOR TO PURCHASE AND/OR INSTALLATION.
24.

ALL PLANTING AREAS SHALL BE MULCHED WITH PINE STRAW MULCH TO A MINIMUM OF 3"; WITH THE EXCEPTION OF BEACH PLANTING. DO NOT USE CYPRESS OR RED MULCH.
25.

ALL TREES SHALL HAVE 2" CALIPER AT D.B.H. MINIMUM FOR A 10' HEIGHT TREE, UNLESS NOTED OTHERWISE.
26.

ALL 1 GALLON MATERIAL SHALL HAVE 12" SPREAD MINIMUM, ALL 3 GALLON MATERIAL TO HAVE 20-24" SPREAD MINIMUM.
27.

ALL PLANTING AREAS WITHIN THE LIMITS OF WORK SHALL RECEIVE 100% COVERAGE BY AUTOMATIC IRRIGATION SYSTEM (DRIP PREFERRED) UNLESS OTHERWISE DIRECTED BY OWNER. SEE IRRIGATION PLANS FOR ADDITIONAL SPECIFICATIONS.
28.

LANDSCAPE CONTRACTOR SHALL COORDINATE HIS WORK WITH ALL OTHER APPROPRIATE CONTRACTORS.
29.

THE LANDSCAPE CONTRACTOR SHALL AT ALL TIMES KEEP THE JOB SITE CLEAN AND FREE FROM ACCUMULATION OF WASTE MATERIAL, DEBRIS, AND RUBBISH.
30.

LANDSCAPE PLAN SHALL BE INSTALLED IN COMPLIANCE WITH ALL LOCAL CODES.
31.

ON-SITE LAYOUT OF PLANT MATERIAL SHALL BE COORDINATED WITH LANDSCAPE ARCHITECT AT THE TIME OF INSTALLATION.
32.

ALL PLANTS, MATERIALS, WORKMANSHIP, AND INVOICE APPROVAL ARE SUBJECT TO THE APPROVAL OF THE LANDSCAPE ARCHITECT.
33.

CONTRACTOR TO FLAG ALL PROPOSED TREE AND PALM LOCATIONS FOR LANDSCAPE ARCHITECT'S APPROVAL PRIOR TO INSTALLATION.
34.

LANDSCAPE ARCHITECT TO APPROVE ALL SHRUB AND GROUNDCOVER PLANTING LOCATION AND LAYOUT PRIOR TO INSTALLATION.
35.

CONTRACTOR SHALL PROVIDE DIGITAL PHOTOGRAPHIC DOCUMENTATION DURING INSTALLATION FOR LANDSCAPE ARCHITECT'S REVIEW, WEEKLY.
36.

LANDSCAPE CONTRACTOR TO INSURE ALL PLANT MATERIAL IS INSTALLED AT THE CORRECT ELEVATION, REFER TO GRADING PLAN.
37.

THE LANDSCAPE CONTRACTOR SHALL MAINTAIN OR COORDINATE WITH THE IRRIGATION CONTRACTOR AND LANDSCAPING MAINTENANCE SERVICES ALL PLANTING INCLUDING WATERING, MOWING, MULCHING, WEED, AND PEST CONTROL UNTIL FINAL ACCEPTANCE BY THE LANDSCAPE ARCHITECT AND OWNER.
38.

THE AWARDED LANDSCAPE CONTRACTOR SHALL SUBMIT A PROPOSED BID / CONTRACT WITH UNIT COST PRICING FOR ALL PLANT MATERIAL INCLUDING (WARRANTY, LABOR, TRANSPORTATION, RELOCATION, SITE MAINTENANCE AND PREPARATION) AS PER THE LANDSCAPE ARCHITECT'S SPECIFICATIONS AND OR PLANTING PLANS.
39.

THE LANDSCAPE CONTRACTOR'S CONTRACT SHALL ACKNOWLEDGE ALL TERMS AND CONDITIONS SET FORTH UNDER THESE GENERAL LANDSCAPE NOTES AND SPECIFICATIONS.
40.

THESE DRAWINGS, DOCUMENTS, AND ALL CONTENTS ARE THE PROPERTY OF RAYMOND JUNGLES, INC. ALL RIGHTS ARE RESERVED. UNAUTHORIZED USE OR PRODUCTION, IN PART OR WHOLE, FOR ANY PURPOSE IS UNLAWFUL AND PROHIBITED EXCEPT BY EXPRESS WRITTEN CONSENT.
41.

IN ADDITION TO THE ABOVE PLANT LIST AND SPECIFICATIONS THERE IS TO BE AN ADDITIONAL \$20,000.00 WHOLESALE PLANT ALLOWANCE - LANDSCAPE ARCHITECT TO SELECT ACCENT SPECIMENS DURING NURSERY VISITS. LANDSCAPE ARCHITECT TO LAY OUT ACCENT PLANTS IN THE FIELD.
42.

FINAL GRADES SHALL BE APPROVED IN THE FIELD BY LANDSCAPE ARCHITECT PRIOR TO PLANTING.

GENERAL TREE BRACING NOTES AND SPECIFICATIONS:

TREES AND PALMS GREATER THAN 6" DBH TO BE BRACED WITH PROPS:

1.

CHOOSE THE CORRECT SIZE, LENGTH, AND NUMBER OF PROPS TO BE USED (PRESSURE TREATED (PT), TIMBER BAMBOO (GUADUA ANGUSTIFOLIA) 3" DIA.).
2.

ALL (PRESSURE TREATED (PT) 2"x4", 4"x4"), STAKES SHALL BE PAINTED AS SPECIFIED BY THE LANDSCAPE ARCHITECT. WRAP AT LEAST 5 LAYERS OF BURLAP AROUND TRUNK OF THE PALM AT LEAST 4 INCHES WIDER THAN THE BATTENS BEING USED. BATTENS SHOULD BE MOUNTED AT A POINT 1/3 OF THE DISTANCE FROM GROUND TO THE CLEAR TRUNK OF THE TREE OR PALM, BUT NOT LESS THAN 4 FEET, WHICHEVER IS GREATER. ALL PAINT COLORS TO BE APPROVED BY LANDSCAPE ARCHITECT.
3.

SELECT THE PROPER LENGTH AND SIZE OF BATTENS (PT 2"x4"x12'-16")
4.

USE THE SAME NUMBER OF BATTENS AS PROPS BEING USED.
5.

PLACE THE BATTENS VERTICALLY AND EVENLY SPACED AGAINST THE BURLAP.
6.

SECURE THE BATTENS IN PLACE WITH METAL OR PLASTIC BANDING STRAPS. DO NOT NAIL TREE.
7.

WEDGE LOWER END OF PROP INTO SOIL AND SECURE WITH A 2"x4"x30" STAKE. PROPS SHOULD BE INSTALLED AT A 30 TO 40 DEGREE ANGLE FROM THE BATTENS AND OF SUFFICIENT LENGTH TO REACH THE GROUND. NOTE: ON STRAIGHT TREES OR PALMS OR TREES, SPACE PROPS EQUAL DISTANCE AROUND TREE OR PALM ON CURVED (CHARACTER) PALMS OR TREES, SPACE PROPS AGAINST THE FRONT OF THE CURVE OF THE PALM.
8.

CUT A SMOOTH ANGLE AT THE END OF THE PROPS. ALIGN WITH AND NAIL INTO BATTENS. DO NOT PENETRATE TREE OR PALM WITH NAILS.
9.

IF IT APPEARS THAT ADDITIONAL CONSTRUCTION WORK WILL TAKE PLACE NEAR TO OR IN THE VICINITY OF THE NEWLY BRACED TREES OR PALMS, THEN PROPS ARE TO BE CLEARLY LABELED WITH THE STATEMENT, "DO NOT REMOVE."
10.

PROPS ARE NOT TO BE REMOVED UNTIL APPROVED BY THE LANDSCAPE CONTRACTOR.

TREES AND PALMS LESS THAN 6" DBH TO BE BRACED BY GUYING:

1.

CHOOSE THE CORRECT SIZE AND NUMBER OF STAKES AND SIZE OF HOSE AND WIRE. GUYING SHALL BE COMPLETED WITHIN 48 HOURS OF PLANTING THE TREE.
2.

CUT LENGTHS OF STAKING HOSE TO EXTEND 2 INCHES PAST TREE TRUNK WHEN WRAPPING AROUND.
3.

SPACE STAKES EVENLY ON OUTSIDE OF WATER RING AND DRIVE EACH FIRMLY INTO THE GROUND. STAKES SHOULD BE DRIVEN AT A 30 DEGREE ANGLE WITH THE POINT OF THE STAKE TOWARD THE TREE UNTIL 4 TO 5 INCHES ARE LEFT SHOWING.
4.

PLACE THE HOSE AROUND THE TRUNK JUST ABOVE THE LOWEST BRANCH.
5.

THREAD THE WIRE THROUGH THE HOSE AND PAST THE STAKE, ALLOWING APPROXIMATELY 2 FEET OF EACH OF THE TWO ENDS BEYOND THE STAKE BEFORE CUTTING THE WIRE.
6.

TWIST WIRE AT RUBBER HOSE TO KEEP IT IN PLACE.
7.

PULL WIRE DOWN AND WIND BOTH ENDS AROUND STAKE TWICE. TWIST WIRE BACK ONTO ITSELF TO SECURE IT BEFORE CUTTING OFF THE EXCESS.
8.

THE ABOVE PROCEDURES ARE TO BE FOLLOWED FOR EACH STAKE, KEEPING THE TREE STRAIGHT AT ALL TIMES.
9.

THERE SHOULD BE A 1 TO 3 INCH SWAY IN THE TREE (THE WIRES SHOULD NOT BE PULLED TIGHT) FOR BEST ESTABLISHMENT.
10.

FLAG THE GUY WIRES WITH SURVEYOR'S FLAGGING OR APPROVED EQUAL FOR SAFETY.
11.

ANY WIRES ARE NOT TO BE REMOVED UNTIL APPROVED BY LANDSCAPE ARCHITECT.

SHOP DRAWINGS / SUBMITTALS AND MOCK-UPS

1.

LANDSCAPE: SUBMIT PHOTOGRAPHS OF ALL MATERIALS WITH SCALE REFERENCE. INDICATE GROWER'S LOCATION AND ANY LEAD TIME FOR ROOT PRUNING OR PREPARATION.

ISSUE:
DRB SUBMITTAL

OCT 11, 2021

DESIGNER:
SCOTT MITCHELL STUDIO
181 NORTH MARTEL AVE.
LOS ANGELES, CA 90036
(323) 933-9078

LOCAL ARCHITECT:
STUDIO MCH+G ARCHITECTURE
7500 NE 4TH COURT
STUDIO 103
MIAMI, FL 33138
(305) 573-2728

LANDSCAPE:
RAYMOND JUNGLES, INC.
2864 AVIATION AVENUE
COCONUT GROVE, FL 33133
(305) 655-6777

OWNER'S REPRESENTATIVE:
HANDCRAFT CONSTRUCTION
MANAGEMENT, INC.
1498 NW 3RD STREET
DEERFIELD BEACH, FL 33442
(954) 418-6344

jungles
RAYMOND JUNGLES INC
Landscape Architect FASLA



RAYMOND JUNGLES
Lic. # LA0000856

REVISIONS

PROJECT

STAR ISLAND
RESIDENCE

SHEET

TITLE

PLANTING NOTES
AND
SPECIFICATIONS

SCALE

AS NOTED

SHEET

NUMBER

LP.401



ISSUED

DRB SUBMITTAL

OCT 11, 2021


DESIGNER:
SCOTT MITCHELL STUDIO
181 NORTH MARTEL AVE
LOS ANGELES, CA 90038
CONTACT: SCOTT MITCHELL
(323) 933-9078

LOCAL ARCHITECT:
STUDIO MCH+D ARCHITECTURE
7500 NE 4TH COURT
STUDIO 103
MIAMI, FL 33138
JENNIFER MCCONNEY-GAYOSO
(305) 573-2728

LANDSCAPE:
RAYMOND JUNGLES, INC.
2864 AVIATION AVENUE
COCONUT GROVE, FL 33133
CONTACT: BENJAMIN GREEN
(305) 888-6777

OWNER'S REPRESENTATIVE:
HANDCRAFT CONSTRUCTION
MANAGEMENT, INC.
1488 NW 3RD STREET
DEERFIELD BEACH, FL 33442
CONTACT: JERRY ROWLAND
(954) 418-6344

jungles
RAYMOND JUNGLES INC
Landscape Architect FASLA



RAYMOND JUNGLES
Lic. # LA0000856

REV#

PROJECT

STAR ISLAND
RESIDENCE

SHEET
TITLE

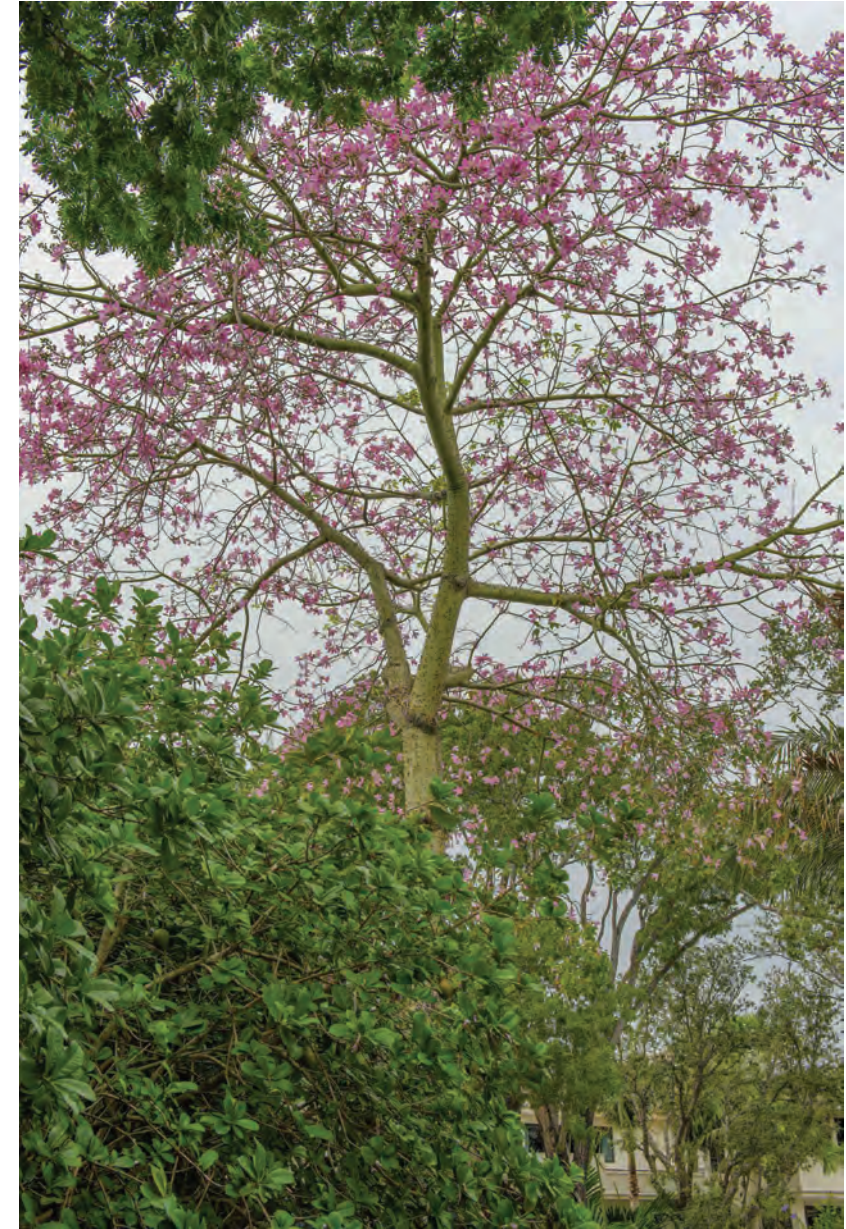
LANDSCAPE MOOD
BOARD

SCALE

AS NOTED

SHEET
NUMBER

LM.101



OCT 11, 2021

DESIGNER:
SCOTT MITCHELL STUDIO
181 NORTH MARTEL AVE
LOS ANGELES, CA 90036
CONTACT: SCOTT MITCHELL
(323) 933-9076

LOCAL ARCHITECT:
STUDIO MC+G ARCHITECTURE
7500 NE 4TH COURT
STUDIO 103
MIAMI, FL 33138
JENNIFER MCCONNEY-GAYOSO
(305) 573-2728

LANDSCAPE:
RAYMOND JUNGLES, INC.
2964 AVIATION AVENUE
COCONUT GROVE, FL 33133
CONTACT: BENJAMIN GREEN
(305) 858-6777

OWNER'S REPRESENTATIVE:
HANDCRAFT CONSTRUCTION
MANAGEMENT, INC.
1498 NW 3RD STREET
DEERFIELD BEACH, FL 33442
CONTACT: JERRY ROWLAND
(954) 418-6344

jungles
RAYMOND JUNGLES INC
Landscape Architect FASLA



RAYMOND JUNGLES
Lic. # LA0000856

REVS:

PROJECT: [REDACTED]

STAR ISLAND
RESIDENCE

SHEET	
TITLE:	

LANDSCAPE MOOD BOARD

SCALE:

AS NOTED

SHEET
11 OF 11

LM.102



OCT 11, 2021

DESIGNER:
SCOTT MITCHELL STUDIO
11 NORTH MARTEL AVE
LOS ANGELES, CA 90036
CONTACT: SCOTT MITCHELL
(213) 933-9078

LOCAL ARCHITECT:
STUDIO MC+G ARCHITECTURE
600 NE 4TH COURT
STUDIO 103
MIAMI, FL 33138
KATHY MCCONNEY-GAYOSO
(305) 573-2728

LANDSCAPE:
RAYMOND JUNGLES, INC.
1864 AVIATION AVENUE
COCONUT GROVE, FL 33133
CONTACT: BENJAMIN GREEN
(305) 858-6777

OWNER'S REPRESENTATIVE:
HANDCRAFT CONSTRUCTION
MANAGEMENT, INC.
98 NW 3RD STREET
SEAFIELD BEACH, FL 33442
CONTACT: JERRY ROWLAND
(54) 418-8344

Jungles
RAYMOND JUNGLES INC
Landscape Architect FASLA



RAYMOND JUNGLES
Lic. # LA0000856

EVS:

SUBJECT:

STAR ISLAND
RESIDENCE

TITLE:

LANDSCAPE MOOD BOARD

SALE:

AS NOTED

MEET

LM.103



DRB SUBMITTAL

OCT 11, 2021

DESIGNER:
SCOTT MITCHELL STUDIO
181 NORTH MARTEL AVE
LOS ANGELES, CA 90038
CONTACT: SCOTT MITCHELL
(323) 933-9078

LOCAL ARCHITECT:
STUDIO MCH+D ARCHITECTURE
7500 NE 4TH COURT
STUDIO 103
MIAMI, FL 33138
JENNIFER MCCONNEY-GAYOSO
(305) 573-2728

LANDSCAPE:
RAYMOND JUNGLES, INC.
2864 AVIATION AVENUE
COCONUT GROVE, FL 33133
CONTACT: BENJAMIN GREEN
(305) 886-6777

OWNER'S REPRESENTATIVE:
HANDCRAFT CONSTRUCTION
MANAGEMENT, INC.
1488 NW 3RD STREET
DEERFIELD BEACH, FL 33442
CONTACT: JERRY ROWLAND
(954) 418-6344

jungles
RAYMOND JUNGLES INC
Landscape Architect FASLA

RAYMOND JUNGLES
Lic. # LA0000856

REV#

PROJECT:
STAR ISLAND
RESIDENCE

SHEET
TITLE:
LANDSCAPE MOOD
BOARD

SCALE:
AS NOTED

SHEET
NUMBER:
LM.104



OCT 11, 2021

DESIGNER:
SCOTT MITCHELL STUDIO
11 NORTH MARTEL AVE
LOS ANGELES, CA 90036
CONTACT: SCOTT MITCHELL
(213) 933-9078

LOCAL ARCHITECT:
STUDIO MC+G ARCHITECTURE
600 NE 4TH COURT
STUDIO 103
MIAMI, FL 33138
KATHY MC CONNEY-GAYOSO
(305) 573-2728

LANDSCAPE:
RAYMOND JUNGLES, INC.
1864 AVIATION AVENUE
COCONUT GROVE, FL 33133
CONTACT: BENJAMIN GREEN
(305) 858-6777

OWNER'S REPRESENTATIVE:
AERIAL CONSTRUCTION
MANAGEMENT, INC.
100 NW 3RD STREET
AERIAL BEACH, FL 33442
CONTACT: JERRY ROWLAND
(407) 418-6344

JUNGLES
RAYMOND JUNGLES INC
Landscape Architect FASLA



RAYMOND JUNGLES
Lic. # LA0000856

EVS:

OBJECT: [REDACTED]

STAR ISLAND
RESIDENCE

GET
TUG:

LANDSCAPE MOOD BOARD

SALES:

AS NOTED

MEET

LM.105



OCT 11, 2021

DESIGNER:
SCOTT MITCHELL STUDIO
161 NORTH MARTEL AVE
LOS ANGELES, CA 90036
CONTACT: SCOTT MITCHELL
(323) 933-9078

LOCAL ARCHITECT:
STUDIO MC+G ARCHITECTURE
7500 NE 4TH COURT
STUDIO 103
MIAMI, FL 33138
JENNIFER MCCONNEY-GAYOSO
(305) 573-2728

LANDSCAPE:
RAYMOND JUNGLES, INC.
2964 AVIATION AVENUE
COCONUT GROVE, FL 33133
CONTACT: BENJAMIN GREEN
(305) 858-6777

OWNER'S REPRESENTATIVE:
HANDCRAFT CONSTRUCTION
MANAGEMENT, INC.
1498 NW 3RD STREET
DEERFIELD BEACH, FL 33442
CONTACT: JERRY ROWLAND
(954) 418-8344

jungles
RAYMOND JUNGLES INC
Landscape Architect FASLA



RAYMOND JUNGLES
Lic. # LA0000856

NEWS:

OBJECT: [REDACTED]

STAR ISLAND
RESIDENCE

HEET	
FILE:	

LANDSCAPE MOOD BOARD

SALE:	
-------	--

AS NOTED

MEET
MARTIN

LM.106



DRB SUBMITTAL

OCT 11, 2021

DESIGNER:
SCOTT MITCHELL STUDIO
11 NORTH MARTEL AVE
LOS ANGELES, CA 90036
CONTACT: SCOTT MITCHELL
(213) 933-9078

LOCAL ARCHITECT:
STUDIO MC+G ARCHITECTURE
600 NE 4TH COURT
STUDIO 103
MIAMI, FL 33138
KATHY MC CONNEY-GAYOSO
(305) 573-2728

LANDSCAPE:
RAYMOND JUNGLES, INC.
1864 AVIATION AVENUE
COCONUT GROVE, FL 33133
CONTACT: BENJAMIN GREEN
(305) 858-6777

OWNER'S REPRESENTATIVE:
AERIAL CONSTRUCTION
MANAGEMENT, INC.
100 NW 3RD STREET
AERIAL BEACH, FL 33442
CONTACT: JERRY ROWLAND
(407) 418-6344

Jungles
RAYMOND JUNGLES INC
Landscape Architect FASLA



RAYMOND JUNGLES
Lic. # LA0000856

EVS:

OBJECT: [REDACTED]

STAR ISLAND
RESIDENCE

GET
TUG:

LANDSCAPE MOOD BOARD

SALES:

AS NOTED

MEET

LM.107



DRB SUBMITTAL

OCT 11, 2021

DESIGNER:
SCOTT MITCHELL STUDIO
11 NORTH MARTEL AVE
LOS ANGELES, CA 90036
CONTACT: SCOTT MITCHELL
(213) 933-9078

LOCAL ARCHITECT:
STUDIO MC+G ARCHITECTURE
500 NE 4TH COURT
STUDIO 103
MIAMI, FL 33138
KATHY MC CONNEY-GAYOSO
(305) 573-2728

LANDSCAPE:
RAYMOND JUNGLES, INC.
1864 AVIATION AVENUE
COCONUT GROVE, FL 33133
CONTACT: BENJAMIN GREEN
(305) 858-6777

OWNER'S REPRESENTATIVE:
HANDCRAFT CONSTRUCTION
MANAGEMENT, INC.
98 NW 3RD STREET
SEAFIELD BEACH, FL 33442
CONTACT: JERRY ROWLAND
(54) 418-8344

JUNGLES
RAYMOND JUNGLES INC
Landscape Architect FASLA



RAYMOND JUNGLES
Lic. # LA0000856

EVS:

OBJECT: [REDACTED]

STAR ISLAND
RESIDENCE

HEET TITLE:	
----------------	--

LANDSCAPE MOOD BOARD

SALES:	
--------	--

AS NOTED

HEET

LM.108



OCT 11, 2021

DESIGNER:
SCOTT MITCHELL STUDIO
11 NORTH MARTEL AVE
LOS ANGELES, CA 90036
CONTACT: SCOTT MITCHELL
(213) 933-9078

LOCAL ARCHITECT:
STUDIO MC+G ARCHITECTURE
600 NE 4TH COURT
STUDIO 103
MIAMI, FL 33138
KATHY MC CONNEY-GAYOSO
(305) 573-2728

LANDSCAPE:
RAYMOND JUNGLES, INC.
1864 AVIATION AVENUE
COCONUT GROVE, FL 33133
CONTACT: BENJAMIN GREEN
(305) 858-6777

OWNER'S REPRESENTATIVE:
HANDCRAFT CONSTRUCTION
MANAGEMENT, INC.
98 NW 3RD STREET
SEAFIELD BEACH, FL 33442
CONTACT: JERRY ROWLAND
(54) 418-8344

Jungles
RAYMOND JUNGLES INC
Landscape Architect FASLA



RAYMOND JUNGLES
Lic. # LA0000856

[illegible]

STAR ISLAND
RESIDENCE

LANDSCAPE MOOD BOARD

AS NOTED

LM.109



OCT 11, 2021

DESIGNER:
SCOTT MITCHELL STUDIO
181 NORTH MARTEL AVE
LOS ANGELES, CA 90036
CONTACT: SCOTT MITCHELL
(323) 933-9078

LOCAL ARCHITECT:
STUDIO MC+G ARCHITECTURE
7500 NE 4TH COURT
STUDIO 103
MIAMI, FL 33138
JENNIFER MCCONNEY-GAYOSO
(305) 573-2728

LANDSCAPE:
RAYMOND JUNGLES, INC.
2964 AVIATION AVENUE
COCONUT GROVE, FL 33133
CONTACT: BENJAMIN GREEN
(305) 856-6777

OWNER'S REPRESENTATIVE:
HANDCRAFT CONSTRUCTION
MANAGEMENT, INC.
1498 NW 3RD STREET
DEERFIELD BEACH, FL 33442
CONTACT: JERRY ROWLAND
(954) 418-6344

jungles
RAYMOND JUNGLES INC
Landscape Architect FASLA



RAYMOND JUNGLES
Lic. # LA0000856

1

1

STAR ISLAND
RESIDENCE

--	--

LANDSCAPE MOOD BOARD

AS NOTED

LM.110



OCT 11, 2021

DESIGNER:
SCOTT MITCHELL STUDIO
161 NORTH MARTEL AVE
LOS ANGELES, CA 90036
CONTACT: SCOTT MITCHELL
(323) 933-9078

LOCAL ARCHITECT:
STUDIO MC+G ARCHITECTURE
7500 NE 4TH COURT
STUDIO 103
MIAMI, FL 33138
JENNIFER MCCONNEY-GAYOSO
(305) 573-2728

LANDSCAPE:
RAYMOND JUNGLES, INC.
2964 AVIATION AVENUE
COCONUT GROVE, FL 33133
CONTACT: BENJAMIN GREEN
(305) 858-6777

OWNER'S REPRESENTATIVE:
HANDCRAFT CONSTRUCTION
MANAGEMENT, INC.
1498 NW 3RD STREET
DEERFIELD BEACH, FL 33442
CONTACT: JERRY ROWLAND
(954) 418-8344

jungles
RAYMOND JUNGLES INC
Landscape Architect FASLA



RAYMOND JUNGLES
Lic. # LA0000856

1

[illegible]STAR ISLAND
RESIDENCE

--	--

LANDSCAPE MOOD BOARD

AS NOTED

LM.111



DRB SUBMITTAL

OCT 11, 2021

DESIGNER:
SCOTT MITCHELL STUDIO
11 NORTH MARTEL AVE
LOS ANGELES, CA 90036
CONTACT: SCOTT MITCHELL
(213) 933-9078

LOCAL ARCHITECT:
STUDIO MC+G ARCHITECTURE
600 NE 4TH COURT
STUDIO 103
MIAMI, FL 33138
KATHY MCCONNEY-GAYOSO
(305) 573-2728

LANDSCAPE:
RAYMOND JUNGLES, INC.
1864 AVIATION AVENUE
COCONUT GROVE, FL 33133
CONTACT: BENJAMIN GREEN
(305) 858-6777

OWNER'S REPRESENTATIVE:
HANDCRAFT CONSTRUCTION
MANAGEMENT, INC.
98 NW 3RD STREET
SEAFIELD BEACH, FL 33442
CONTACT: JERRY ROWLAND
(54) 418-8344

Jungles
RAYMOND JUNGLES INC
Landscape Architect FASLA



RAYMOND JUNGLES
Lic. # LA0000856

EVS:

OBJECT: [REDACTED]

STAR ISLAND
RESIDENCE

GET
TUG:

LANDSCAPE MOOD BOARD

SALES:

AS NOTED

MEET

LM.112



A PATH LIGHT
Scale: N.T.S.



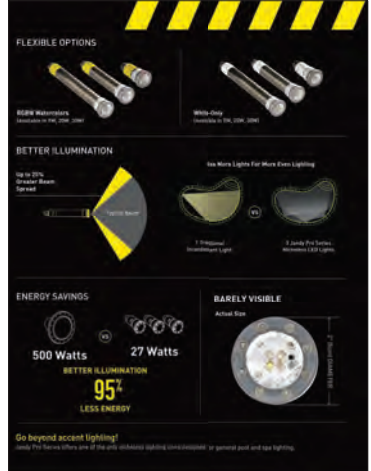
B UP LIGHT
Scale: N.T.S.



C IN-GROUND UP LIGHT
Scale: N.T.S.



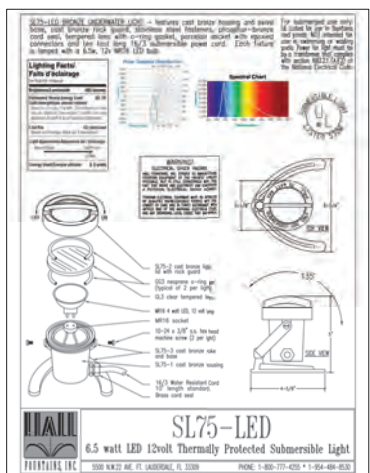
D WALL WASH UP LIGHT
Scale: N.T.S.



E POOL LIGHT
Scale: N.T.S.



F TREE MOUNTED DOWN LIGHT
Scale: N.T.S.



G WATER FEATURE UPLIGHT
Scale: N.T.S.



H WATER FEATURE LIGHT
Scale: N.T.S.



I RECESSED STEP LIGHT
Scale: N.T.S.

GENERAL NOTES

- PROPOSED LANDSCAPE LIGHTING IS TO BE SUBTLE, ACCENTUATE SPECIMEN AND OTHER KEY PLANT MATERIAL, AND PROVIDE WAYFINDING. LIGHTING FOR SPORTS COURTS OR OTHER ATYPICAL FEATURE LIGHTING IS NOT PROPOSED.
- ALL FIXTURES TO BE INSTALLED PER THE NATIONAL ELECTRICAL CODE (N.E.C.). THE N.E.C. SHALL GOVERN AND SUPERCEDE ALL SPECIFICATIONS.
- CONTRACTOR TO COORDINATE EXACT FIXTURE LOCATION WITH LANDSCAPE ARCHITECT PRIOR TO INSTALLATION.
- CONTRACTOR TO VERIFY TRANSFORMER QUANTITIES AND LOCATIONS PRIOR TO INSTALLATION.
- ALL VISIBLE HARDWARE CONNECTIONS TO BE APPROVED BY LANDSCAPE ARCHITECT.
- NO LAMP SUBSTITUTIONS SHALL BE PERMITTED UNLESS APPROVED BY LANDSCAPE ARCHITECT.
- PERFORMANCE ENHANCING LENSES TO BE SPECIFIED AND APPROVED BY LANDSCAPE ARCHITECT. PRISMATIC SPREAD LENSES TO BE USED FOR WIDE BEAM ANGLES.
- TRANSFORMERS SHALL BE MULTI-MATIC MAGNETIC STAINLESS STEEL.
- PRIOR TO PURCHASING MATERIALS, CONTRACTOR SHALL PROVIDE SUBMITTALS TO LANDSCAPE ARCHITECT FOR REVIEW AND APPROVAL.
- WIRE SHALL BE UV RESISTANT DIRECT BURIAL LIGHTING CABLE INSTALLED A

- MINIMUM OF 6" BELOW GRADE. CONTRACTOR SHALL ALLOW FOR AN ADDITIONAL 15% LOAD ON EACH CIRCUIT.
- DIRECT BURIAL WIRE SHALL BE PROTECTED BY 2' LENGTH PVC SLEEVE AT EDGE OF EVERY LANDSCAPE BED LINE.
- ALL CONNECTORS USED SHALL BE KING INNOVATION SILICONE WATER-RESISTANT WIRE NUT CONNECTORS.
- CONTRACTOR SHOULD VERIFY ALL ESTIMATED QUANTITIES OF MATERIAL SHOWN ON THE LANDSCAPE ARCHITECT'S DRAWINGS PRIOR TO SUBMITTING A BID.
- NO CHANGE OR SUBSTITUTION SHALL BE MADE WITHOUT PRIOR APPROVAL OF THE LANDSCAPE ARCHITECT. ANY REVISION OR MODIFICATIONS TO THE LIGHTING PLAN MUST HAVE PRIOR APPROVAL BY THE LANDSCAPE ARCHITECT & OWNER.
- CHANGES MAY OCCUR DURING THE NORMAL COURSE OF IMPLEMENTATION. VERBAL CHANGE ORDERS WILL NOT BE HONORED. ANY CHANGES MUST BE SUBMITTED TO THE LANDSCAPE ARCHITECT IN WRITING AS A CHANGE ORDER TO BE REVIEWED AND APPROVED IN WRITING BY OWNER/CLIENT.
- LIGHTING CONTRACTOR SHALL LOCATE AND VERIFY ALL UNDERGROUND UTILITIES OR STRUCTURES PRIOR TO DIGGING. LIGHTING CONTRACTOR SHALL REPAIR ALL DAMAGES TO UNDERGROUND UTILITIES, AND OR CONSTRUCTION

- CAUSED BY LIGHTING INSTALLATION, AT NO COST TO THE OWNER.
- LIGHTING CONTRACTOR SHALL COORDINATE HIS WORK WITH ALL OTHER APPROPRIATE CONTRACTORS.
- LIGHTING PLAN SHALL BE INSTALLED IN COMPLIANCE WITH ALL LOCAL CODES.
- ON-SITE LAYOUT OF LIGHT FIXTURES SHALL BE COORDINATED WITH LANDSCAPE ARCHITECT AT THE TIME OF INSTALLATION.
- THE CONTRACTOR IS RESPONSIBLE FOR OBTAINING ANY PERMITS OR APPROVALS FROM THE FEDERAL, STATE OR LOCAL GOVERNMENT REQUIRED FOR THE WORK INCLUDED IN THIS CONTRACT AND ON THESE DRAWINGS.
- THESE DRAWINGS, DOCUMENTS, AND ALL CONTENTS ARE THE PROPERTY OF RAYMOND JUNGLES, INC. ALL RIGHTS ARE RESERVED. UNAUTHORIZED USE OR PRODUCTION, IN PART OR WHOLE, FOR ANY PURPOSE IS UNLAWFUL AND PROHIBITED EXCEPT BY EXPRESS WRITTEN CONSENT.
- CONTRACTOR SHALL POWER, AND CONFIRM VIA TESTING THE VOLTAGE OF EACH FIXTURE TO ENSURE THAT IT MEETS MANUFACTURER'S SPECIFICATIONS.
- ANY AND ALL WATER FEATURE LIGHTING FIXTURES SHALL BE 12 VOLT MAXIMUM AND BE GROUNDED.
- CONTRACTOR SHALL FURNISH ALL WARRANTY DOCUMENTATION TO OWNER AT COMPLETION OF JOB.
- CONTRACTOR SHALL HAVE LIGHTING INSTALLATION PERMITTED AND

- INSPECTED BY THE GOVERNING REGULATORY AGENCY. APPROVAL DOCUMENTATION SHALL BE FURNISHED TO THE LANDSCAPE ARCHITECT & OWNER.
- CONTRACTOR SHALL DISCUSS OWNER PREFERENCES FOR SCENE OPTIONS AND DIMMING CONTROLS PRIOR TO LIGHTING INSTALLATION.
- TRANSFORMER CAPACITY TO BE DETERMINED BY CONTRACTOR AND APPROVED BY LANDSCAPE ARCHITECT.
- TRANSFORMERS SHALL BE COMPATIBLE WITH IN-HOUSE CONTROLS.
- LAMP TYPES SHALL BE AN LED LIGHT SOURCE, UNLESS NOTED OTHERWISE, AND APPROVED BY LANDSCAPE ARCHITECT.
- ALL FIXTURES SHALL BE ON A DIMMER CONTROL MODULE WITH SCENE OPTIONS.
- INDIVIDUAL FIXTURE TYPES SHALL BE ON DEDICATED/SEGREGATED CIRCUITS AND TRANSFORMERS.