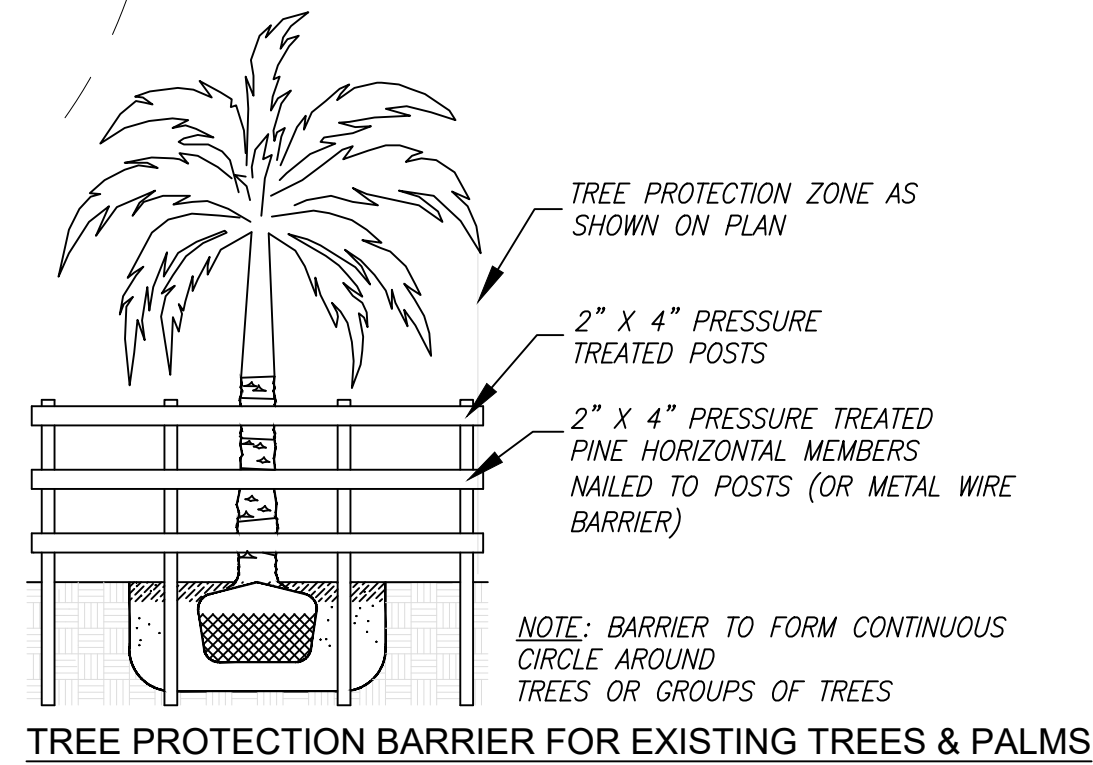


TREE DISPOSITION PLAN

Scale: 1" = 30'-0"

SYMBOL LEGEND

- Tree to Relocate
- Tree to Remove
- Tree to Remain



*NOTE: SEE LANDSCAPE PLAN FOR TREE PROTECTION FENCE

ARQUITECTONICA

2900 Oak Avenue, Miami, FL 33133
T 305.372.1812 F 305.372.1175

ALL DESIGNS INDICATED IN THESE DRAWINGS ARE PROPERTY OF ARQUITECTONICA INTERNATIONAL CORP. NO COPIES, TRANSMISSIONS, REPRODUCTIONS OR ELECTRONIC MANIPULATION OF ANY PORTION OF THESE DRAWINGS IN THE WHOLE OR IN PART ARE TO BE MADE WITHOUT THE EXPRESS OF WRITTEN AUTHORIZATION OF ARQUITECTONICA INTERNATIONAL CORP. DESIGN INTENT SHOWN IS SUBJECT TO REVIEW AND APPROVAL OF ALL APPLICABLE LOCAL AND GOVERNMENTAL AUTHORITIES HAVING JURISDICTION. ALL COPYRIGHTS RESERVED © 2019. THE DATA INCLUDED IN THIS STUDY IS CONCEPTUAL IN NATURE AND WILL CONTINUE TO BE MODIFIED THROUGHOUT THE COURSE OF THE PROJECTS DEVELOPMENT WITH THE EVENTUAL INTEGRATION OF STRUCTURAL, MEP AND LIFE SAFETY SYSTEMS. AS THESE ARE FURTHER REFINED, THE NUMBERS WILL BE ADJUSTED ACCORDINGLY.

DRB SUBMITTAL

3900 ALTON ROAD, MIAMI
BEACH, FL 33140

TREE DISPOSITION PLAN

SCALE: 1" = 40'-0"

DATE:
04/19/2021

TD-01

W H
P
WITKIN HULTS
+ PARTNERS
307 south 21st avenue hollywood, florida
phone: 954.923.9681 facsimile: 954.923.9689
www.witkindesign.com

	Jeff Shimonski, Certified Arborist FL-1052AM							
	Scientific name	Common name	DBH	H/Ct	Canopy	Condition	TPZ	Status
10	Roystonea regia	Royal palm	8"	17'	18'	Moderate	5'	Remain
57	Eugenia foetida	Spanish stopper	6"	28'	16'	Good	8'	Relocate
69	Eugenia foetida	Spanish stopper	7"	20'	18'	Good	8'	Remain
70	Eugenia foetida	Spanish stopper	13"	30'	28'	Good	10'	Remain
71	Bursera simaruba	Gumbo limbo	11"	28'	40'	Moderate	10'	Remain
72	Eugenia foetida	Spanish stopper	8"	22'	30'	Moderate	10'	Remain
73	Swietenia mahagoni	Mahogany	35"	50'	75'	Moderate	20'	Relocate*
82	Terminalia catappa	Tropical almond	38"	50'	70'	Poor	20'	Remove
91	Conocarpus erectus	Green buttonwood	6"	15'	15'	Poor	6'	Remain
92	Conocarpus erectus	Green buttonwood	6"	12'	15'	Poor	6'	Remain
93	Schinus terebinthifolius	Brazilian pepper	13"	18'	25'	Invasive		Remove
94	Terminalia catappa	Tropical almond	7"	26'	28'	Poor	8'	Remain
95	Leucaena leucocephala	Lead tree	6"	26'	30'	Invasive		Remove
96	Leucaena leucocephala	Lead tree	5"	25'	20'	Invasive		Remove
97	Leucaena leucocephala	Lead tree	4"	20'	18'	Invasive		Remove
98	Leucaena leucocephala	Lead tree	7"	25'	30'	Invasive		Remove
103	Conocarpus erectus	Green buttonwood	11"	25'	35'	Good	10'	Remain
104	Conocarpus erectus	Green buttonwood	19"	25'	25'	Good	15'	Remain
105	Swietenia mahagoni	Mahogany	44"	40'	70'	Good	25'	Remain
106	Sabal palmetto	Sabal palm	12"	12'	18'	Moderate	4'	Relocate
107	Podocarpus gracilior	Weeping podocarpus	8"	27'	30'	Good	8'	Relocate
108	Podocarpus gracilior	Weeping podocarpus	4"	14'	18'	Good	5'	Relocate
109	Roystonea regia	Royal palm	17"	14'	20'	Good	5'	Remove
110	Latania loddigesii	Blue latan palm	0	0	18'	Good	5'	Remove
111	Veitchia montgomeryana	Montgomery palm	8"	20'	14'	Good	4'	Remove
112	Veitchia montgomeryana	Montgomery palm	9"	30'	16'	Good	4'	Remove
113	Veitchia montgomeryana	Montgomery palm	9"	20'	14'	Good	4'	Remove
114	Sabal palmetto	Sabal palm	11"	20'	18'	Good	4'	Relocate
115	Acoelorrhaphes wrightii	Paurotis palm	56"	14'	30'	Good	4'	Remove
116	Conocarpus erectus	Green buttonwood	17"	35'	30'	Moderate	15'	Remain
117	Conocarpus erectus	Green buttonwood	9"	26'	20'	Good	10'	Remain
118	Conocarpus erectus	Green buttonwood	13"	28'	20'	Good	10'	Remain
119	Acoelorrhaphes wrightii	Paurotis palm	54"	14'	25'	Good	4'	Remove
120	Acoelorrhaphes wrightii	Paurotis palm	48"	14'	30'	Good	4'	Remove
121	Bursera simaruba	Gumbo limbo	10"	30'	30'	Good	10'	Relocate*
122	Ficus benjamina nuda	Weeping fig	20"	35'	65'	Good	20'	Remove
123	Quercus virginiana	Live oak	8"	35'	32'	Good	10'	Relocate*
124	Acoelorrhaphes wrightii	Paurotis palm	50"	14'	34'	Good	4'	Remove
125	Acoelorrhaphes wrightii	Paurotis palm	40"	18'	35'	Good	4'	Remove
126	Cocos nucifera	Coconut palm	8"	13'	26'	Good	4'	Remove
127	Acoelorrhaphes wrightii	Paurotis palm	51"	15'	32'	Good	4'	Remove
128	Sabal palmetto	Sabal palm	14"	6'	18'	Good	4'	Relocate
129	Sabal palmetto	Sabal palm	12"	13'	18'	Good	4'	Relocate
125	Acoelorrhaphes wrightii	Paurotis palm	40"	18'	35'	Good	4'	Remove
126	Cocos nucifera	Coconut palm	8"	13'	28'	Good	4'	Remove
127	Acoelorrhaphes wrightii	Paurotis palm	51"	15'	32'	Good	4'	Remove
128	Sabal palmetto	Sabal palm	14"	6'	18'	Good	4'	Relocate
129	Sabal palmetto	Sabal palm	12"	13'	18'	Good	4'	Relocate
130	Quercus virginiana	Live oak	8"	35'	30'	Good	8'	Relocate*
131	Acoelorrhaphes wrightii	Paurotis palm	50"	16'	30'	Good	4'	Remove
132	Sabal palmetto	Sabal palm	11"	15'	18'	Good	4'	Relocate
133	Acoelorrhaphes wrightii	Paurotis palm	36"	12'	18'	Good	4'	Remove
134	Acoelorrhaphes wrightii	Paurotis palm	36"	12'	18'	Good	4'	Remove
135	Rapanea punctata	Myrsine	2"	14'	14'	Good	3'	Remove
136	Cocos nucifera	Coconut palm	18"	13'	22'	Good	4'	Remove
137	Acoelorrhaphes wrightii	Paurotis palm	38"	13'	18'	Good	4'	Remove
138	Acoelorrhaphes wrightii	Paurotis palm	34"	13'	15'	Good	4'	Remove
139	Rapanea punctata	Myrsine	3"	14'	15'	Good	4'	Remove
139a	Conocarpus erectus	Green buttonwood	7"	18'	25'	Good	8'	Relocate*
139b	Conocarpus erectus	Green buttonwood	5"	28'	18'	Good	8'	Relocate*
140	Cocos nucifera	Coconut palm	18"	15'	28'	Good	5'	Remove
141	Acoelorrhaphes wrightii	Paurotis palm	54"	12'	18'	Good	4'	Remove
142	Roystonea regia	Royal palm	18"	30'	28'	Good	5'	Remove
143	Quercus virginiana	Live oak	6"	28'	30'	Moderate	8'	Remove
144	Roystonea regia	Royal palm	18"	50'	20'	Moderate	5'	Remove
145	Latania loddigesii	Blue latan palm	0	0	18'	Good	5'	Remove
146	Quercus virginiana	Live oak	7"	27'	38'	Moderate	8'	Remove
147	Cocos nucifera	Coconut palm	9"	12'	24'	Good	5'	Remove
148	Sabal palmetto	Sabal palm	12	14'	22'	Good	4'	Relocate
149	Cocos nucifera	Coconut palm	9"	12'	32'	Good	5'	Remove
149a	Conocarpus erectus	Green buttonwood	4"	15'	18'	Good	5'	Relocate
149b	Conocarpus erectus	Green buttonwood	7"	24'	26'	Good	5'	Relocate
149c	Conocarpus erectus	Green buttonwood	8"	20'	22'	Good	5'	Relocate
149d	Rapanea punctata	Myrsine	3"	22'	18'	Good	4'	Relocate*
149e	Conocarpus erectus	Green buttonwood	6"	22'	22'	Good	5'	Relocate
150	Cocos nucifera	Coconut palm	9"	12'	18'	Good	5'	Remove
151	Roystonea regia	Royal palm	16"	18'	18'	Poor	5'	Remove
151a	Conocarpus erectus	Green buttonwood	6"	18'	15'	Good	5'	Relocate
151b	Quercus virginiana	Live oak	6"	28'	24'	Moderate	8'	Remove
151c	Rapanea punctata	Myrsine	8"	20'	24'	Good	5'	Relocate
151d	Conocarpus erectus	Green buttonwood	6"	24'	22'	Good	5'	Relocate
152	Roystonea regia	Royal palm	16"	16'	18'	Poor	5'	Remove
152a	Conocarpus erectus	Green buttonwood	6"	24'	18'	Good	5'	Relocate
153	Cocos nucifera	Coconut palm	9"	17'	24'	Moderate	5'	Remove
154	Cocos nucifera	Coconut palm	8"	14'	34'	Moderate	5'	Remove
155	Roystonea regia	Royal palm	17"	22'	30'	Poor	5'	Remove
155a	Conocarpus erectus	Green buttonwood	5"	20'	18'	Good	5'	Relocate
156	Sabal palmetto	Sabal palm	13"	16'	16'	Good	4'	Relocate
157	Cocos nucifera	Coconut palm	12"	35'	36'	Good	5'	Remove
157a	Rapanea punctata	Myrsine	5"	20'	18'	Good	5'	Relocate
157b	Conocarpus erectus	Green buttonwood	4"	18'	20'	Moderate	5'	Remove
157c	Conocarpus erectus	Green buttonwood	7"	22'	18'	Good	5'	Relocate
158	Quercus virginiana	Live oak	6"	30'	24'	Good	8'	Relocate
159	Cocos nucifera	Coconut palm	10"	16'	28'	Moderate	10'	Remove
160	Conocarpus erectus	Green buttonwood	14"	22'	28'	Good	10'	Relocate
161	Quercus virginiana	Live oak	7"	30'	28'	Good	8'	Relocate
162	Sabal palmetto	Sabal palm	12"	12'	15'	Good	4'	Relocate
163	Latania loddigesii	Blue latan palm	0	0	18'	Good	5'	Remove
164	Roystonea regia	Royal palm	15"	28'	16'	Poor	5'	Remove
165	Conocarpus erectus	Green buttonwood	7"	28'	35'	Good	8'	Relocate
166	Conocarpus erectus	Green buttonwood	7"	27'	25'	Good	8'	Relocate
167	Sabal palmetto	Sabal palm	13"	12'	18'	Good	4'	Relocate
168	Conocarpus erectus	Green buttonwood	12"	28'	30'	Good	10'	Relocate
169	Roystonea regia	Royal palm	13"	20'	18'	Poor	5'	Remove
169a	Conocarpus erectus	Green buttonwood	11"	16'	15'	Good	8'	Relocate
170	Cocos nucifera	Coconut palm	9"	12'	18'	Good	4'	Remove
171	Roystonea regia	Royal palm	14"	26'	18'	Poor	5'	Remove
171a	Conocarpus erectus	Green buttonwood	5"	13'	12'	Good	5'	Relocate
171b	Conocarpus erectus	Green buttonwood	7"	15'	14'	Good	6'	Relocate
172	Cocos nucifera	Coconut palm	8"	13'	28'	Good	4'	Remove

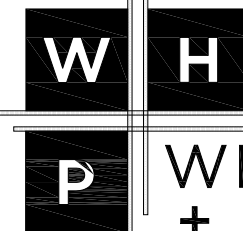
172a	Conocarpus erectus	Green buttonwood	13"	26'	20'	Good	10'	Relocate
173	Quercus virginiana	Live oak	6"	30'	35'	Good	8'	Relocate
173a	Conocarpus erectus	Green buttonwood	4"	18'	16'	Good	6'	Relocate
174	Sabal palmetto	Sabal palm	14"	7'	18'	Good	4'	Relocate
175	Roystonea regia	Royal palm	12"	18'	24'	Poor	5'	Remove
175a	Conocarpus erectus	Green buttonwood	9"	22'	20'	Good	8'	Relocate
176	Quercus virginiana	Live oak	6"	28'	18'	Moderate	8'	Relocate
176a	Latania loddigesii	Blue latan palm	0	0	15'	Good	5'	Remove
177	Cocos nucifera	Coconut palm	8"	12'	36'	Good	4'	Remain
178	Sabal palmetto	Sabal palm	13"	15'	18'	Good	4'	Relocate
179	Cocos nucifera	Coconut palm	9"	13'	35'	Good	4'	Remove
180	Roystonea regia	Royal palm	17"	18'	18'	Moderate	5'	Remove
180a	Rapanea punctata	Myrsine	4"	22'	22'	Good	6'	Remove
180b	Podocarpus macrophyllus	Podocarpus	5"	14'	14'	Good	5'	Relocate
180c	Podocarpus macrophyllus	Podocarpus	5"	13'	14'	Moderate	5'	Relocate
181	Swietenia mahagoni	Mahogany	38"	35'	60'	Good	20'	Remain
182	Manilkara zapota	Sapodilla	33"	35'	70'	Good	20'	Remove
183	Terminalia catappa	Tropical almond	4"	20'	25'	Good	5'	Remove
184	Terminalia catappa	Tropical almond	4"	20'	38'	Good	5'	Remove
185	Schinus terebinthifolius	Brazilian pepper	5"	25'	20'	Invasive		Remove
186	Schinus terebinthifolius	Brazilian pepper	4"	25'	20'	Invasive		Remove
187	Schinus terebinthifolius	Brazilian pepper	5"	22'	18'	Invasive		Remove
188	Sabal palmetto	Sabal palm	12"	22'	18'	Good	4'	Relocate
189	Ficus aurea	Strangler fig	48"	35'	55'	Moderate	18'	Remove
190	Sabal palmetto	Sabal palm	12"	22'	20'	Good	4'	Relocate
191	Coccoloba diversifolia	Pigeon plum	7"	20'	15'	Moderate	5'	Remove
192	Coccoloba uvifera	Seagrape	8"	35'	40'	Good	12'	Remove
193	Roystonea regia	Royal palm	4"	4'	22'	Good	4'	Remove
194	Sabal palmetto	Sabal palm	0	1'	18'	Good	4'	Relocate
195	Coccoloba diversifolia	Pigeon plum	8"	25'	16'	Moderate	6'	Remove
196	Sabal palmetto	Sabal palm	10"	7'	20'	Good	4'	Relocate
197	Coccoloba diversifolia	Pigeon plum	9"	28'	20'	Good	10'	Relocate*
198	Terminalia catappa	Tropical almond	5"	28'	35'	Poor	8'	Remove
199	Ficus aurea	Strangler fig	3"	3'	18'	Moderate	4'	Remove
200	Quercus virginiana	Live oak	8"	30'	30'	Moderate	10'	Relocate*
201	Sideroxylon foetidissimum	False mastic	10"	35'	25'	Moderate	12'	Relocate*
202	Schinus terebinthifolius	Brazilian pepper	8"	14'	15'	Invasive		Remove
203	Coccoloba diversifolia	Pigeon plum	5"	18'	15'	Poor	5'	Remove
204	Coccoloba diversifolia	Pigeon plum	9"	28'	18'	Moderate	10'	Relocate*
205	Coccoloba uvifera	Seagrape	59"	30'	70'	Good	25'	Remove
206	Coccoloba uvifera	Seagrape	25"	30'	35'	Good	18'	Remove
207	Sabal palmetto	Sabal palm	9"	18'	18'	Good	4'	Relocate
208	Bursera simaruba	Gumbo limbo	11"	28'	35'	Moderate	10'	Relocate
209	Rapanea punctata	Myrsine	10"	28'	28'	Moderate	10'	Relocate*
210	Terminalia catappa	Tropical almond	12"	35'	50'	Good	15'	Relocate
211	Bursera simaruba	Gumbo limbo	22"	28'	35'	Good	20'	Relocate
212	Bursera simaruba	Gumbo limbo	14"	28'	25'	Moderate	12'	Relocate*
213	Bursera simaruba	Gumbo limbo	13"	30'	50'	Good	15'	Relocate*
214	Rapanea punctata	Myrsine	7"	30'	18'	Moderate	8'	Remove
215	Rapanea punctata	Myrsine	13"	35'	28'	Moderate	12'	Remove
216	Terminalia catappa	Tropical almond	14"	60'	70'	Moderate	20'	Remove
217	Ficus aurea	Strangler fig	33"	70'	90'	Good	25'	Remove
218	Quercus virginiana	Live oak	13"	30'	45'	Good	15'	Remove
219	Bursera simaruba	Gumbo limbo	9"	35'	25'	Moderate	10'	Remove
220	Rapanea punctata	Myrsine	36"	28'	30'	Moderate	12'	Relocate*
221	Sideroxylon foetidissimum	False mastic	17"	45'	55'	Good	18'	Remove
222	Bursera simaruba	Gumbo limbo	11"	40'	50'	Moderate	15'	Relocate*
223	Lysiloma latisiliquum	Wild tamarind	56"	60'	90'	Good	25'	Remove
224	Bursera simaruba	Gumbo limbo	11"	18'	36'	Moderate	10'	Relocate*
225	Bursera simaruba	Gumbo limbo	14"	35'	45'	Good	15'	Remain
226	Coccoloba diversifolia	Pigeon plum	12"	22'	28'	Good	10'	Remain
227	Lysiloma latisiliquum	False mastic	48"	50'	80'	Good	25'	Remove
228	Lysiloma latisiliquum	False mastic	40"	55'	90'	Good	25'	Remove
229	Citharexylum spinosum	Fiddlewood	15"	35'	30'	Moderate	10'	Relocate*
230	Rapanea punctata	Myrsine	12"	28'	25'	Good	10'	Relocate*
231	Citharexylum spinosum	Fiddlewood	12"	35'	60'	Moderate	15'	Remove
232	Bursera simaruba	Gumbo limbo	12"	40'	55'	Good	18'	Remove
233	Sideroxylon foetidissimum	False mastic	10"	30'	30'	Moderate	10'	Relocate*
234	Schinus terebinthifolius	Brazilian pepper	14"	35'	40'	Invasive		Remove
235	Schinus terebinthifolius	Brazilian pepper	18"	35'	40'	Invasive		Remove
236	Rapanea punctata	Myrsine	22"	30'	45'	Good	18'	Relocate*
237	Terminalia catappa	Tropical almond	15"	40'	55'	Poor	15'	Remove
237a	Bursera simaruba	Gumbo limbo	9"	35'	25'	Poor	8'	Remove
238	Bursera simaruba	Gumbo limbo	17"	40'	80'	Moderate	18'	Relocate*
239	Roystonea regia	Royal palm	12"	25'	28'	Poor	5'	Remove
240	Roystonea regia	Royal palm	19"	30'	36'	Good	5'	Remove
241	Roystonea regia	Royal palm	14"	28'	34'	Good	5'	Remove
242	Roystonea regia	Royal palm	21"	38'	38'	Good	5'	Remove
243	Not found							Remove
244	Rapanea punctata	Myrsine	15"	35'	30'	Moderate	15'	Remove
245	Roystonea regia	Royal palm	12"	28'	32'	Good	5'	Remove
246	Roystonea regia	Royal palm	13"	22'	24'	Good	5'	Remove
247	Roystonea regia	Royal palm	12"	13'	16'	Poor	5'	Remove
248	Roystonea regia	Royal palm	16"	26'	26'	Good	5'	Remove
249	Cocos nucifera	Coconut palm	8"	12'	28'	Good	5'	Remove
250	Cocos nucifera	Coconut palm	9"	9'	28'	Good	5'	Remove
251	Cocos nucifera	Coconut palm	9"	11'	30'	Good	5'	Remove
252	Lysiloma latisiliquum	False mastic	19"	28'	50'	Good	18'	Relocate*
253	Roystonea regia	Royal palm	17"	30'	32'	Good	5'	Remove
254	Dyopsis lutescens	Areca palm	32"	9'	18'	Good	4'	Remove
255	Dyopsis lutescens	Areca palm	28"	9'	18'	Moderate	4'	Remove
256	Dyopsis lutescens	Areca palm	42"	13'	18'	Good	4'	Remove
257	Dyopsis lutescens	Areca palm	36"	9'	18'	Good	4'	Remove
258	Swietenia mahagoni	Mahogany	14"	18'	12'			Remove
259	Psychosperma elegans	Solitare palm	3"	7'	10'			Remove
260	Psychosperma elegans	Solitare palm	8"	10'	16'			Remain
261	Psychosperma elegans	Solitare palm	6"	15'	14'			Remain
262	Psychosperma elegans	Solitare palm	3"	7'	8'			Remain
263	Psychosperma elegans	Solitare palm	9"	15'	22'			Remain
264	Psychosperma elegans	Solitare palm	4"	6'	10'			Remove
265	Ravenna madagascariensis	Traveller's tree	7"	28'	22'			Remove
266	Swietenia mahagoni	Mahogany	36"	45'	65'			Remain



GROUND FLOOR RENDERED SITE PLAN

Scale: 1" = 20'-0"

NORTH



**WITKIN HULTS
+ PARTNERS**
307 south 21st avenue hollywood, florida
phone: 954.923.9681 facsimile: 954.923.9689
www.witkindesign.com

ARQUITECTONICA

2900 Oak Avenue, Miami, FL 33133
T 305.372.1812 F 305.372.1175

ALL DESIGNS INDICATED IN THESE DRAWINGS ARE PROPERTY OF ARQUITECTONICA INTERNATIONAL CORP. NO COPIES, TRANSMISSIONS, REPRODUCTIONS OR ELECTRONIC MANIPULATION OF ANY PORTION OF THESE DRAWINGS IN THE WHOLE OR IN PART ARE TO BE MADE WITHOUT THE EXPRESS WRITTEN AUTHORIZATION OF ARQUITECTONICA INTERNATIONAL CORP. DESIGN INTENT SHOWN IS SUBJECT TO REVIEW AND APPROVAL OF ALL APPLICABLE LOCAL AND GOVERNMENTAL AUTHORITIES HAVING JURISDICTION. ALL COPYRIGHTS RESERVED © 2019. THE DATA INCLUDED IN THIS STUDY IS CONCEPTUAL IN NATURE AND WILL CONTINUE TO BE MODIFIED THROUGHOUT THE COURSE OF THE PROJECTS DEVELOPMENT WITH THE EVENTUAL INTEGRATION OF STRUCTURAL, MEP AND LIFE SAFETY SYSTEMS. AS THESE ARE FURTHER REFINED, THE NUMBERS WILL BE ADJUSTED ACCORDINGLY.

DRB SUBMITTAL

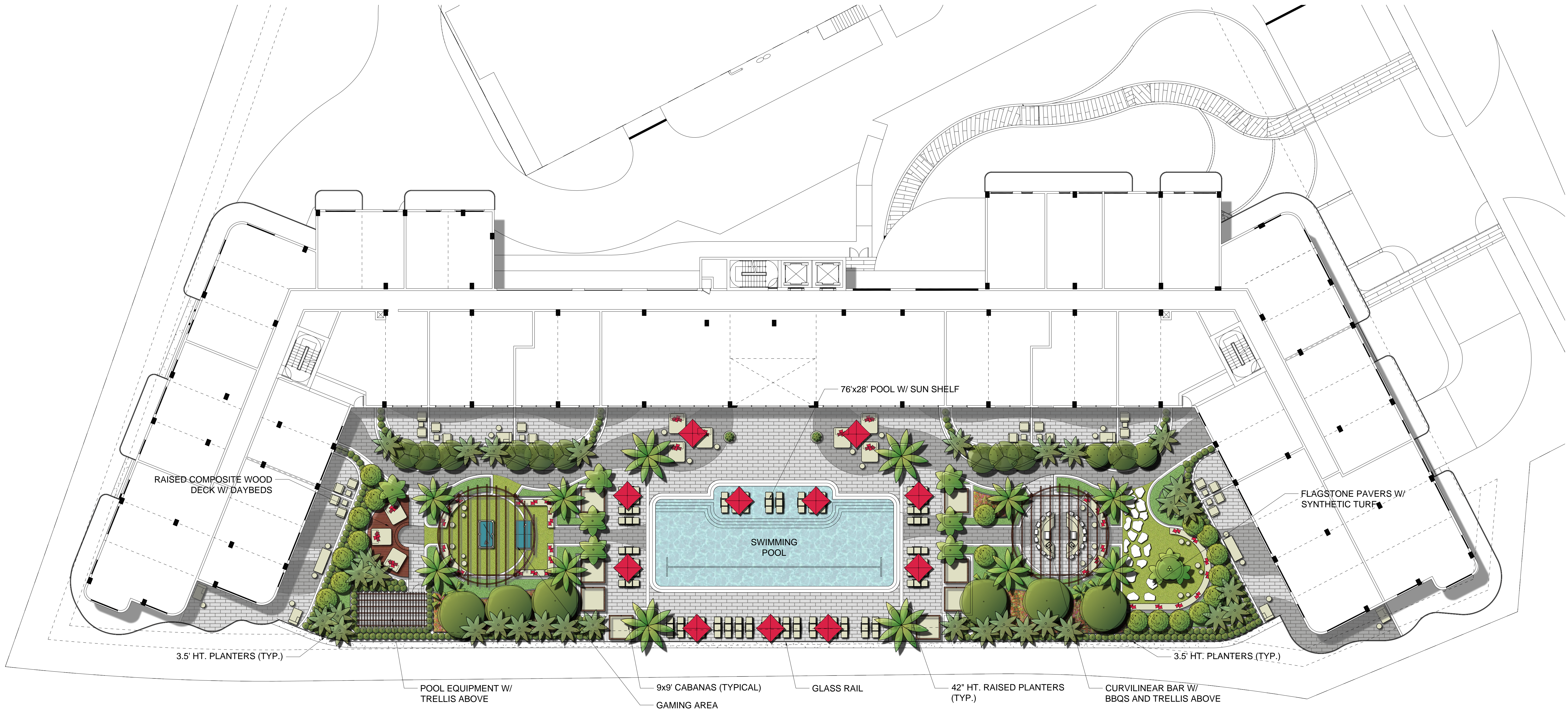
3900 ALTON ROAD, MIAMI
BEACH, FL 33140

**GROUND FLOOR
RENDERED SITE PLAN**

SCALE: 1" = 20'-0"

DATE:
05/03/2021

R-01



2ND LEVEL POOL DECK RENDERED PLAN

Scale: 1" = 15'-0"

NORTH



ARQUITECTONICA

2900 Oak Avenue, Miami, FL 33133
T 305.372.1812 F 305.372.1175

ALL DESIGNS INDICATED IN THESE DRAWINGS ARE PROPERTY OF ARQUITECTONICA INTERNATIONAL CORP. NO COPIES, TRANSMISSIONS, REPRODUCTIONS OR ELECTRONIC MANIPULATION OF ANY PORTION OF THESE DRAWINGS IN THE WHOLE OR IN PART ARE TO BE MADE WITHOUT THE EXPRESS WRITTEN AUTHORIZATION OF ARQUITECTONICA INTERNATIONAL CORP. DESIGN INTENT SHOWN IS SUBJECT TO REVIEW AND APPROVAL OF ALL APPLICABLE LOCAL AND GOVERNMENTAL AUTHORITIES HAVING JURISDICTION. ALL COPYRIGHTS RESERVED © 2019. THE DATA INCLUDED IN THIS STUDY IS CONCEPTUAL IN NATURE AND WILL CONTINUE TO BE MODIFIED THROUGHOUT THE COURSE OF THE PROJECTS DEVELOPMENT WITH THE EVENTUAL INTEGRATION OF STRUCTURAL, MEP AND LIFE SAFETY SYSTEMS. AS THESE ARE FURTHER REFINED, THE NUMBERS WILL BE ADJUSTED ACCORDINGLY.

DRB SUBMITTAL

3900 ALTON ROAD, MIAMI
BEACH, FL 33140

2ND LEVEL POOL DECK RENDERED PLAN

SCALE: 1" = 20'-0"

DATE:
05/03/2021

R-02