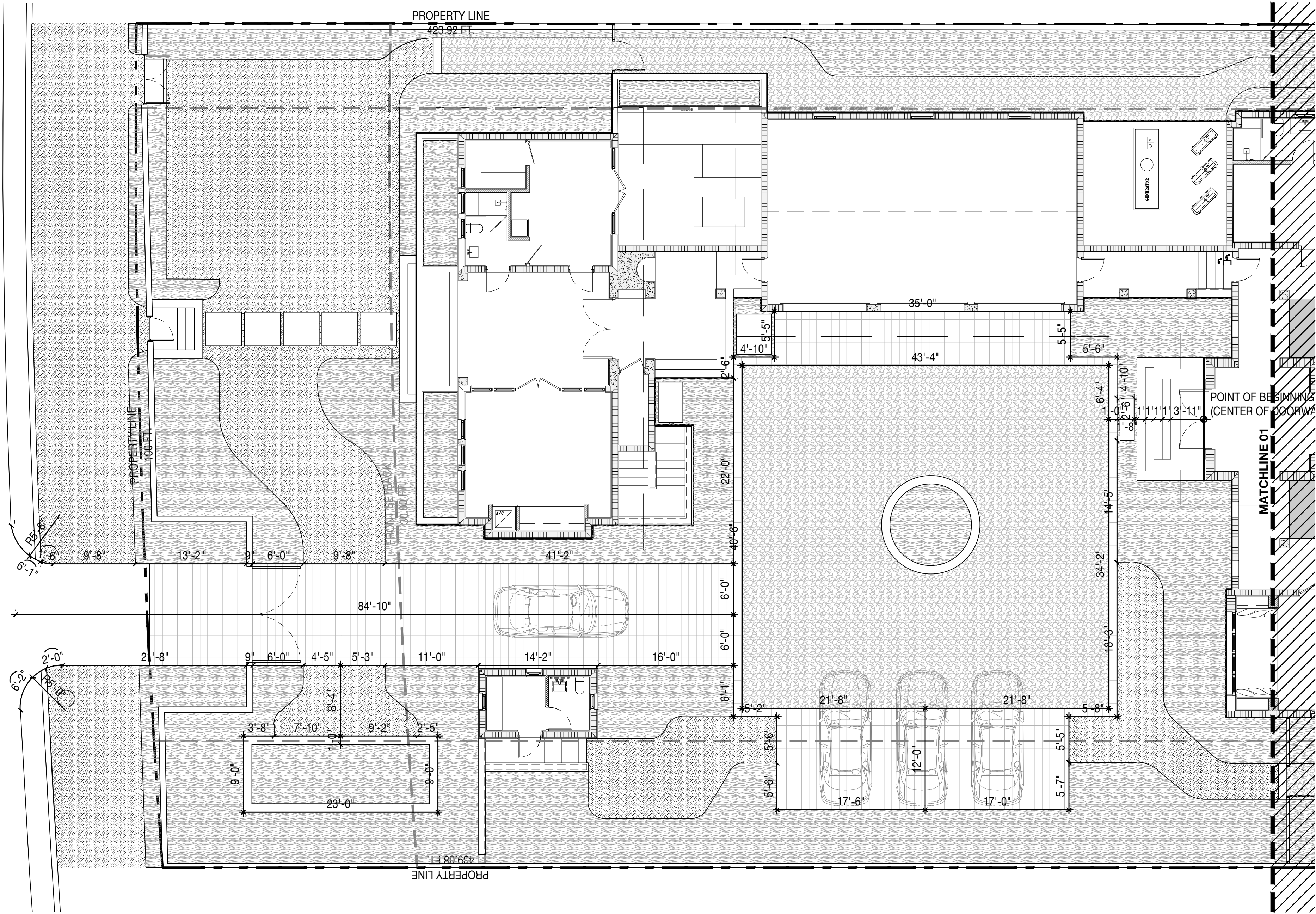


PINETREE DRIVE



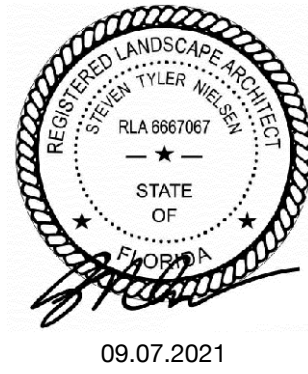
LAYOUT NOTES

- LAYOUT AND VERIFY DIMENSIONS PRIOR TO CONSTRUCTION. NOTIFY LANDSCAPE ARCHITECT OF ANY DISCREPANCIES. LANDSCAPE ARCHITECT TO REVIEW AND APPROVE ALL LAYOUTS CONTAINED IN THE CONSTRUCTION DOCUMENTS PRIOR TO CONSTRUCTION.
- WRITTEN DIMENSIONS SHALL TAKE PRECEDENCE OVER SCALED DIMENSIONS. DO NOT SCALE DIMENSIONS FROM REDUCED DRAWINGS.
- DIMENSIONS REFERRED TO AS "EQUAL" INDICATE SPACING WHICH IS EQUIDISTANT MEASURED TO THE CENTERLINES.
- MEASUREMENTS ARE TO THE FINISHED FACE OF BUILDINGS, WALLS, OR OTHER FIXED SITE IMPROVEMENTS. DIMENSIONS TO CENTERLINES ARE IDENTIFIED AS SUCH.
- INSTALL INTERSECTING ELEMENTS AT 90-DEGREE ANGLES, UNLESS OTHERWISE INDICATED. MAINTAIN HORIZONTAL ALIGNMENT OF ADJACENT ELEMENTS AS INDICATED IN CONTRACT DOCUMENTS.
- SPECIAL CONSIDERATION IS GIVEN TO THE DESIGN AND INTENDED RELATIONSHIP BETWEEN ARCHITECTURE, PLANTING AREAS AND PAVING SYSTEMS. PAVEMENT JOINTING, PAVERS, STONE, FINISHES AND GRADES HAVE BEEN STRICTLY COORDINATED IN THE CONTRACT DOCUMENTS. CONSTRUCTION OF THESE SYSTEMS SHALL BE STRICTLY COORDINATED.

THE BUERSTEDDE GARDEN

4721 PINE TREE DRIVE | MIAMI BEACH, FLORIDA 33140

SEAL (S TYLER NIELSEN - LA6667067)

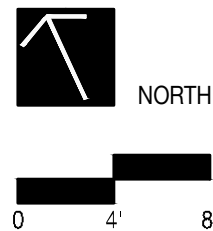


09.07.2021

LAYOUT PLAN A	
DATE	ISSUE
07.29.2021	DRB SUBMITTAL
08.11.2021	DRB SUBMITTAL
09.07.2021	FINAL SUBMITTAL

Steven  
Nielsen

Digitally signed  
by Steven Nielsen  
Date: 2021.08.31  
10:44:26 -04'00'

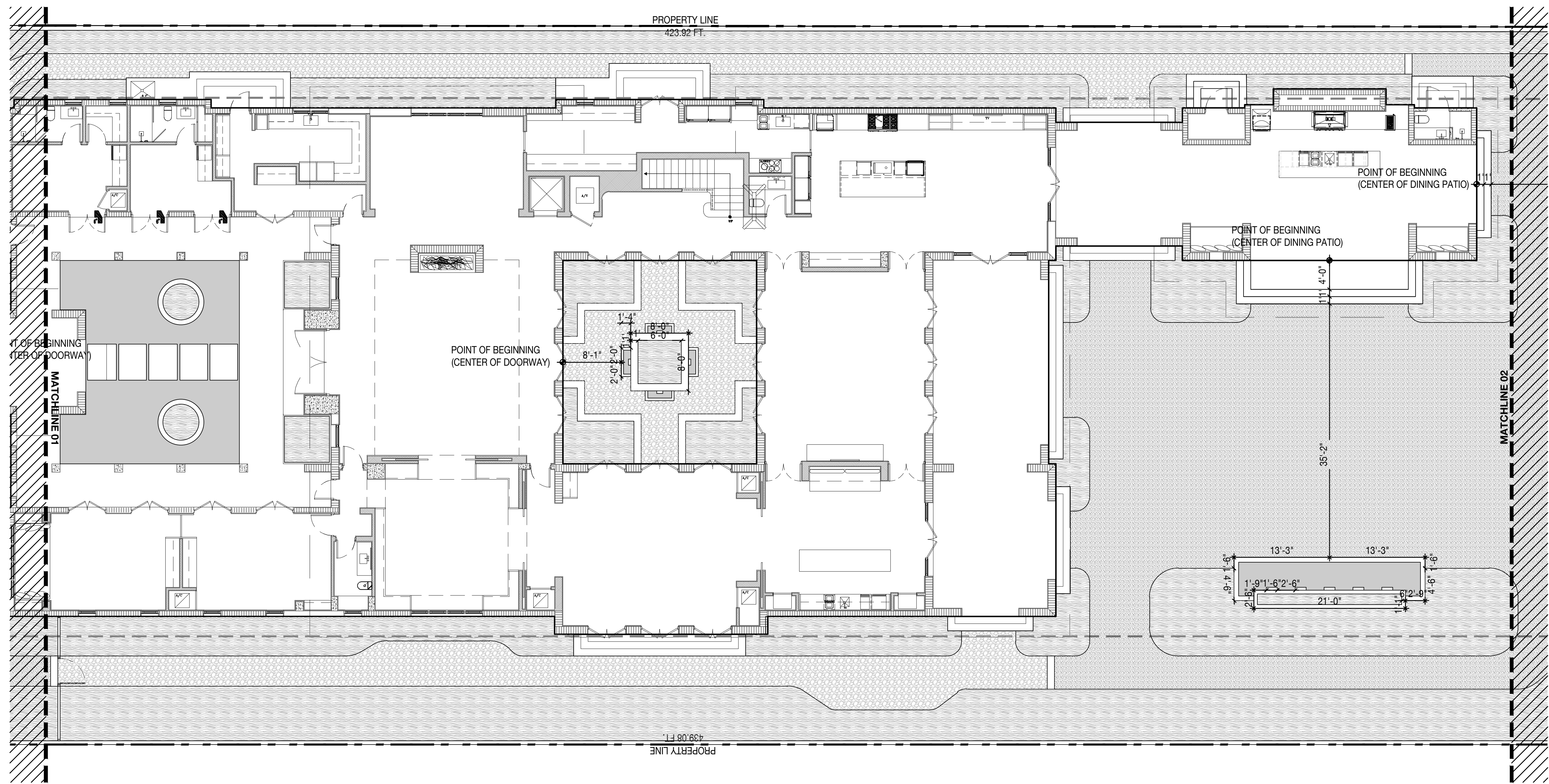


L500





## 4721 PINETREE DRIVE | MIAMI BEACH, FLORIDA 33140



SEAL (S TYLER NIELSEN - LA6667067)

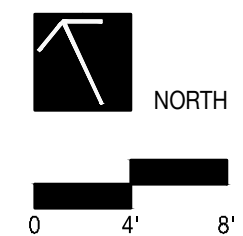


09.07.2021

LAYOUT PLAN B	
DATE	ISSUE
07.29.2021	DRB SUBMITTAL
08.11.2021	DRB SUBMITTAL
09.07.2021	FINAL SUBMITTAL

Steven  
Nielsen

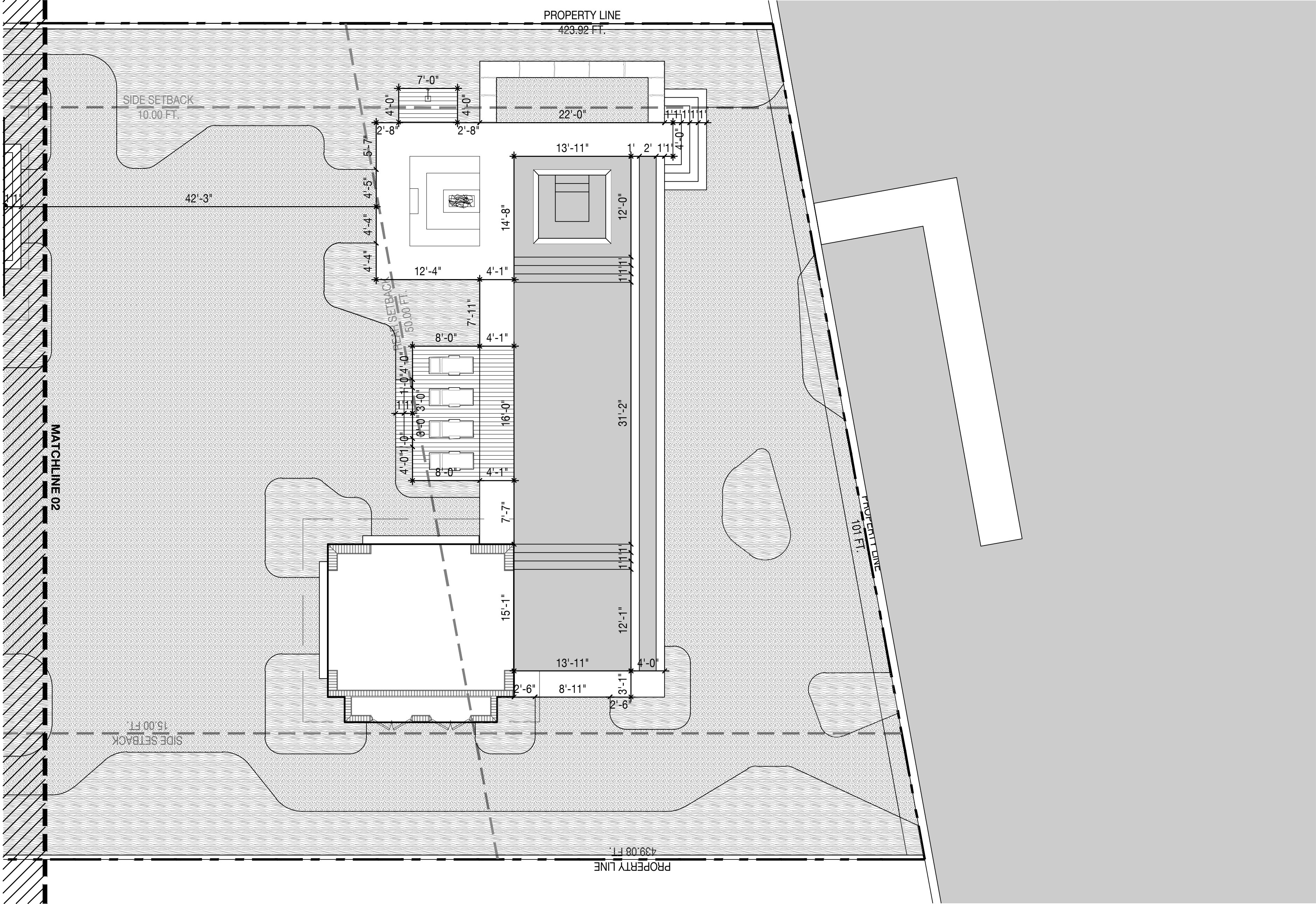
Digitally signed  
by Steven Nielsen  
Date: 2021.08.31  
10:44:57 -04'00'



# L501

© COPYRIGHT NIELSEN LANDSCAPE ARCHITECTS, LLC





THE BUERSTEDDE GARDEN

4721 PINE TREE DRIVE | MIAMI BEACH, FLORIDA 33140

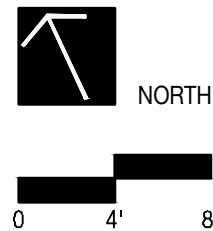
SEAL (S TYLER NIELSEN - LA6667067)



09.07.2021

LAYOUT PLAN C	
DATE	ISSUE
07.29.2021	DRB SUBMITTAL
08.11.2021	DRB SUBMITTAL
09.07.2021	FINAL SUBMITTAL

Steven Nielsen  
Digitally signed  
by Steven Nielsen  
Date: 2021.08.31  
10:45:15 -04'00'



L502