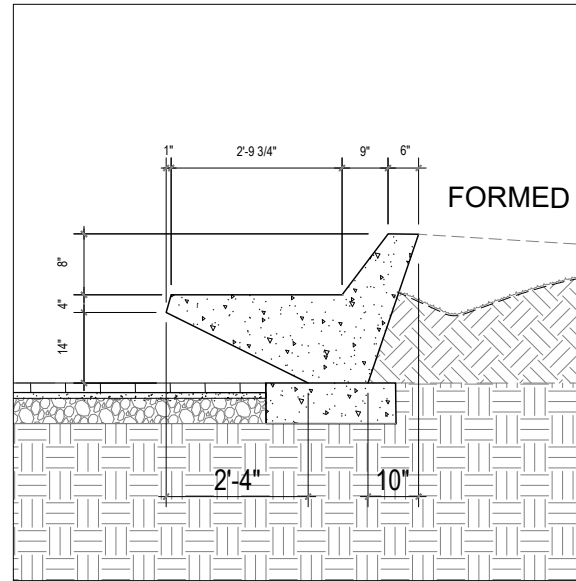
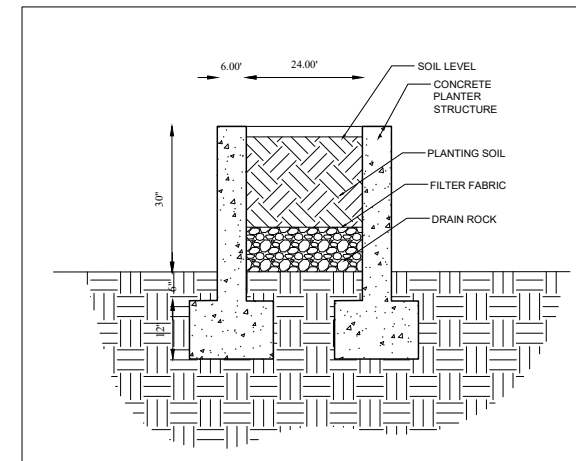


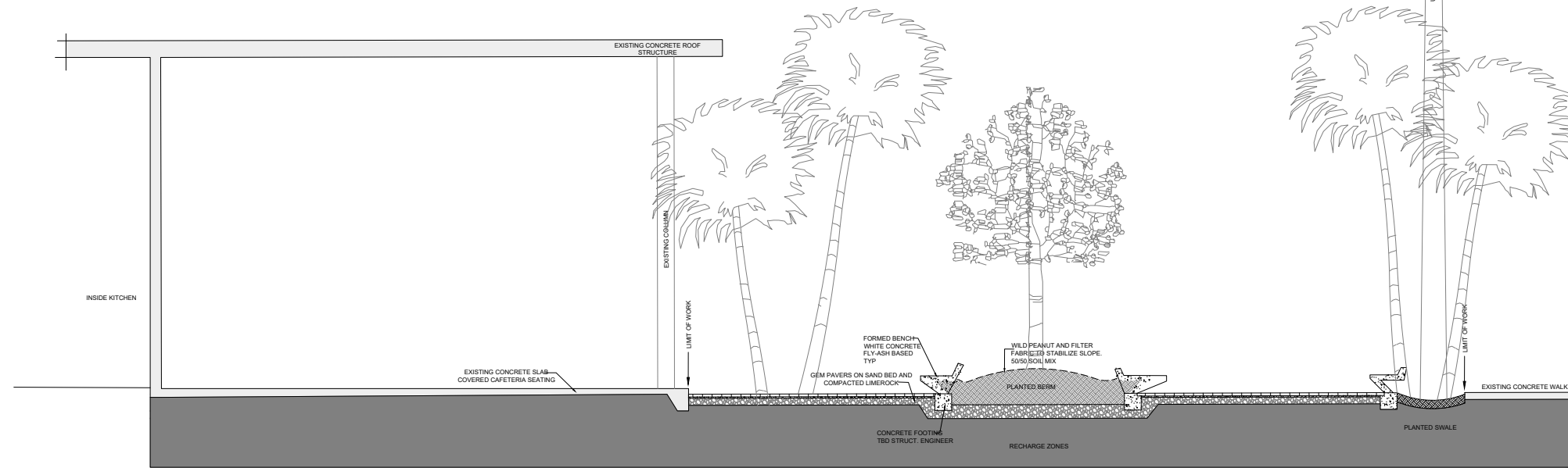
CONCRETE BENCH SECTION



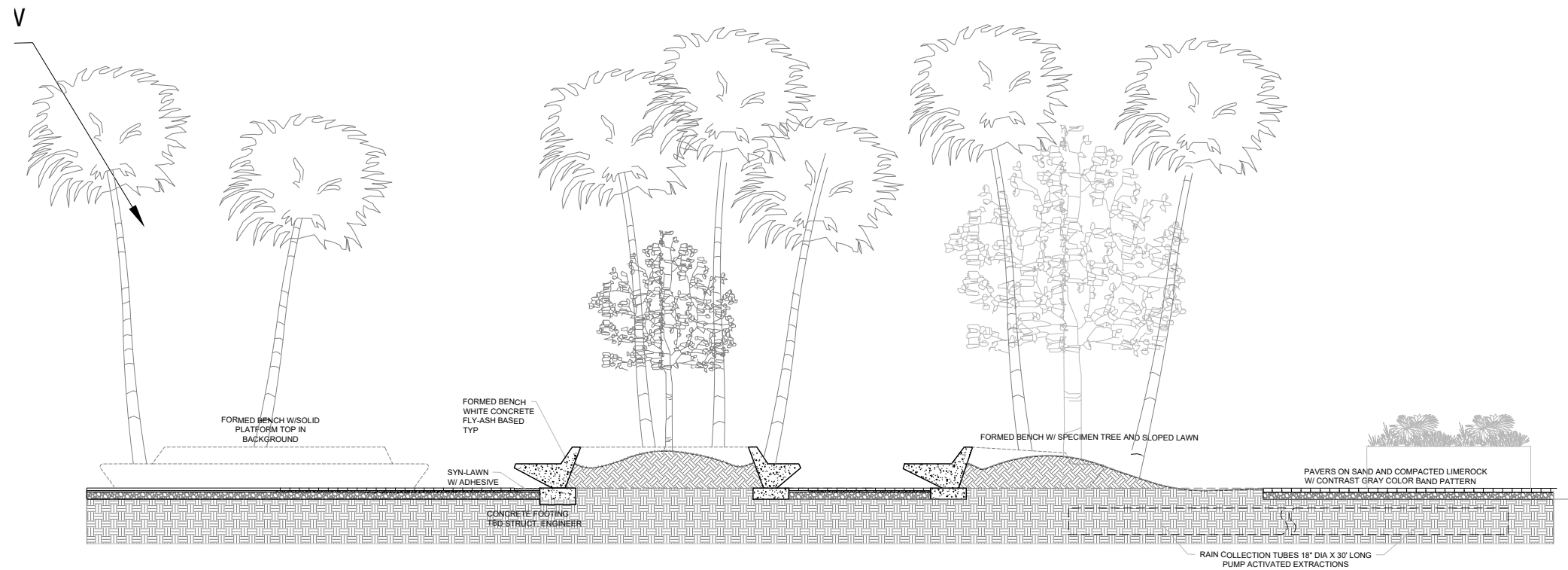
CONCRETE BENCH SECTION



RAISED CONCRETE VEGETABLE PLANTER SECTION



SECTION AA



SECTION BB



NOTE:
These architectural drawings and plans are the intellectual property of the firm and VFD INC. No part of these plans shall be reproduced for use by any individual or entity or any other project without the express written permission.

MIAMI BEACH HIGH SCHOOL
Courtyard Beautification
2231 Prairie Ave, Miami Beach, FL 33139

SHEET ISSUE:

REV #	DATE	DESCRIPTION
1	6.11.14	ADA REVISIONS

1 6.11.14 ADA REVISIONS

2

3

4

5

6

7

8

9

10

11

12

13

14

15

16

17

18

19

20

21

22

23

24

25

26

27

28

29

30

SCALE: SEE SHEET

DRAWN BY: VF

CHECKED BY:

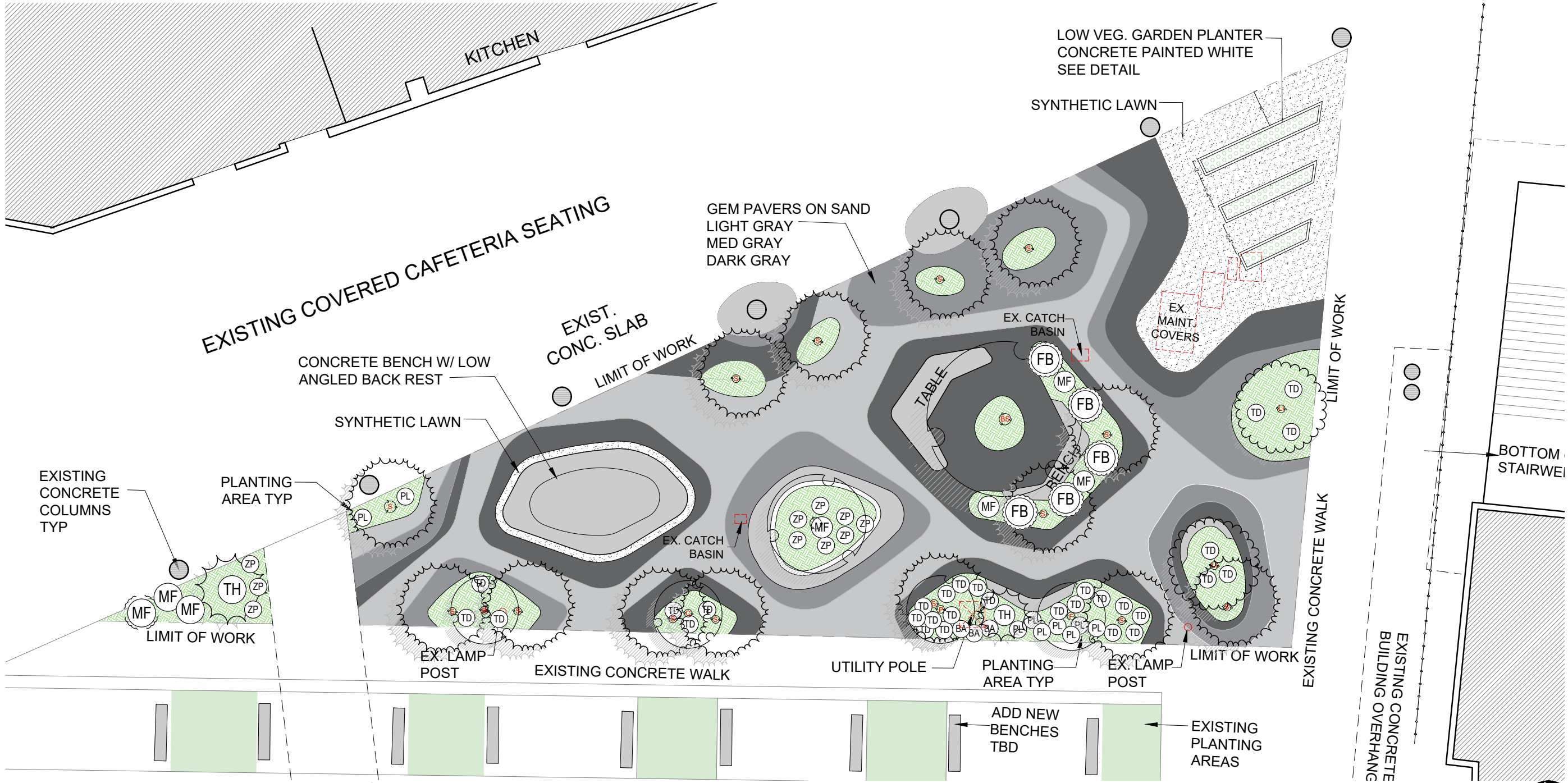
DATE: 1.3.2020

DISCIPLINE / SHEET TITLE

SITE SECTIONS

SHEET NUMBER:

LH-1.2



PLANT SYMBOLS

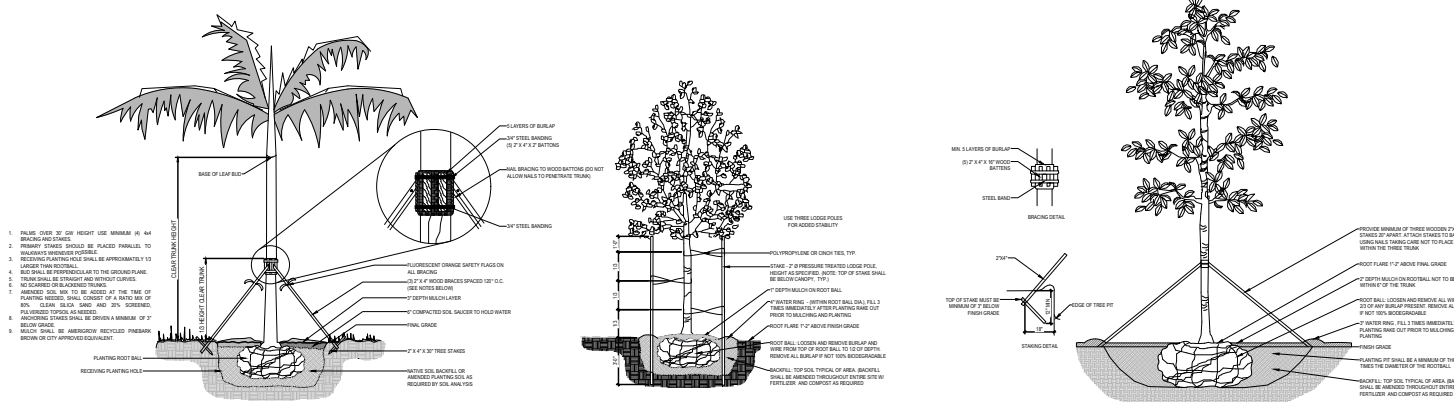
- GUMBO LIMBO
- SIMPSON STOPPER
- LAGERSTROEMIA INDICA
- SABAL PALMETTO
- ORANGE GINGER
- BULNESEA ARBOREA
- BAY RUM TREE
- FIDDLEWOOD TREE
- THATCH PALM
- FIREBUSH
- BAHAMA COFFEE
- FAKAHATCHEE
- BLOOMING JASMINE
- COONTIE

LEGEND

- ECO TURF
- NEW PLANTING AREA
- EXISTING PLANTING AREA
- SYNTHETIC LAWN
- CONCRETE PAVERS ON SAND BED (BLACK 788 SF, MED. GRAY 647 SF, LIGHT GRAY 996 SF.)
- CONCRETE BENCHES
- RAISED CONCRETE VEGETABLE GARDEN

PLANT LIST

ITEM #	CODE	DISCRIPTION	SPEC.	QTY	
1	BS	Gumbo Limbo Specimen	bucidia busara	18"+ Mature Trunk width 24'-26' Ht x 16'-20' Wide	1
2	MF	Simpson Stopper Tree	Myrica fragrens	45 Gallon 12' HT. x 8' W multi trunk character	7
3	S	Sabal Palm	Sabal palmetto	20'-26" Clear Trunk with Curved Character	14
4	TH	Green Thatch Palm	Thrinax radiata	6-7' Overall HT. Single Trunk Double	2
5	F	Fiddlewood Tree	Citharexylum spinosum	15 Gallon 6'-8" Ht. 1-2" trunk (CMB TO DONATE)	1
6	B	Bulnesia arborea Tree	Same	15 Gallon 6'-8" Ht. 1-2" trunk (CMB TO DONATE)	1
7	P	Bay Rum Tree	Pimenta racemosa	15 Gallon 6'-8" Ht. 1-2" trunk (CMB TO DONATE)	1
8	LI	Crepe Myrtle	Lagerstroemia indica	F.G. 16' - 18' Ht	1
9	C	Orange Gieger Tree	Corida sebastiana	15 Gallon 6'-8" Ht. 1-2" trunk (CMB TO DONATE)	1
10	FB	Firebush	Hamelia patens	7 Gallon	5
11	PL	Bahama Coffee Bush	Psychotria linguistifolia	7 Gallon	9
12	ZP	Coontie	Zamia pumila	7 Gallon	10
13	BA	Blooming Jasmine	Brunfelsia americana	7 Gallon	3
14	TD	Fakahatchee Grass	Tripsacum dactyloides	3 Gallon	30
15		Eco Turf	Archis glabrata	1 Gallon	400
16		Mixed Native Groundcovers	Golden Creeper Portulaca oleracea More TBD	1 Gallon	300
17		PINE STRAW MULCH	ROLL EDGES	1 Pallet	
18		PLANTING SOIL	50/50 MIX	20 YRDS	



PLANTING PLAN N

NOTE:
These architecture drawings and plans are the exclusive copyright of the architect and shall not be reproduced for use by any individual or entity or any other project without the express written permission.

MIAMI BEACH HIGH SCHOOL
Courtyard Beautification
2231 Prairie Ave, Miami Beach, FL 33139

SHEET ISSUE:

REV #	DATE	DESCRIPTION
1	5.11.14	ADA REVISIONS

SCALE: SEE SHEET
DRAWN BY: ANA JARDINES
CHECKED BY:
DATE: 1.3.2020

PLANTING PLAN

SHEET NUMBER:
LP-1.0