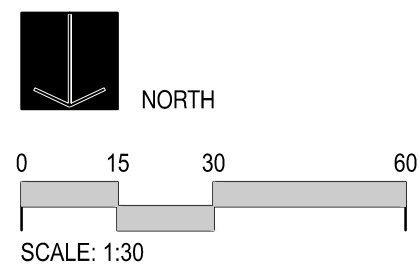
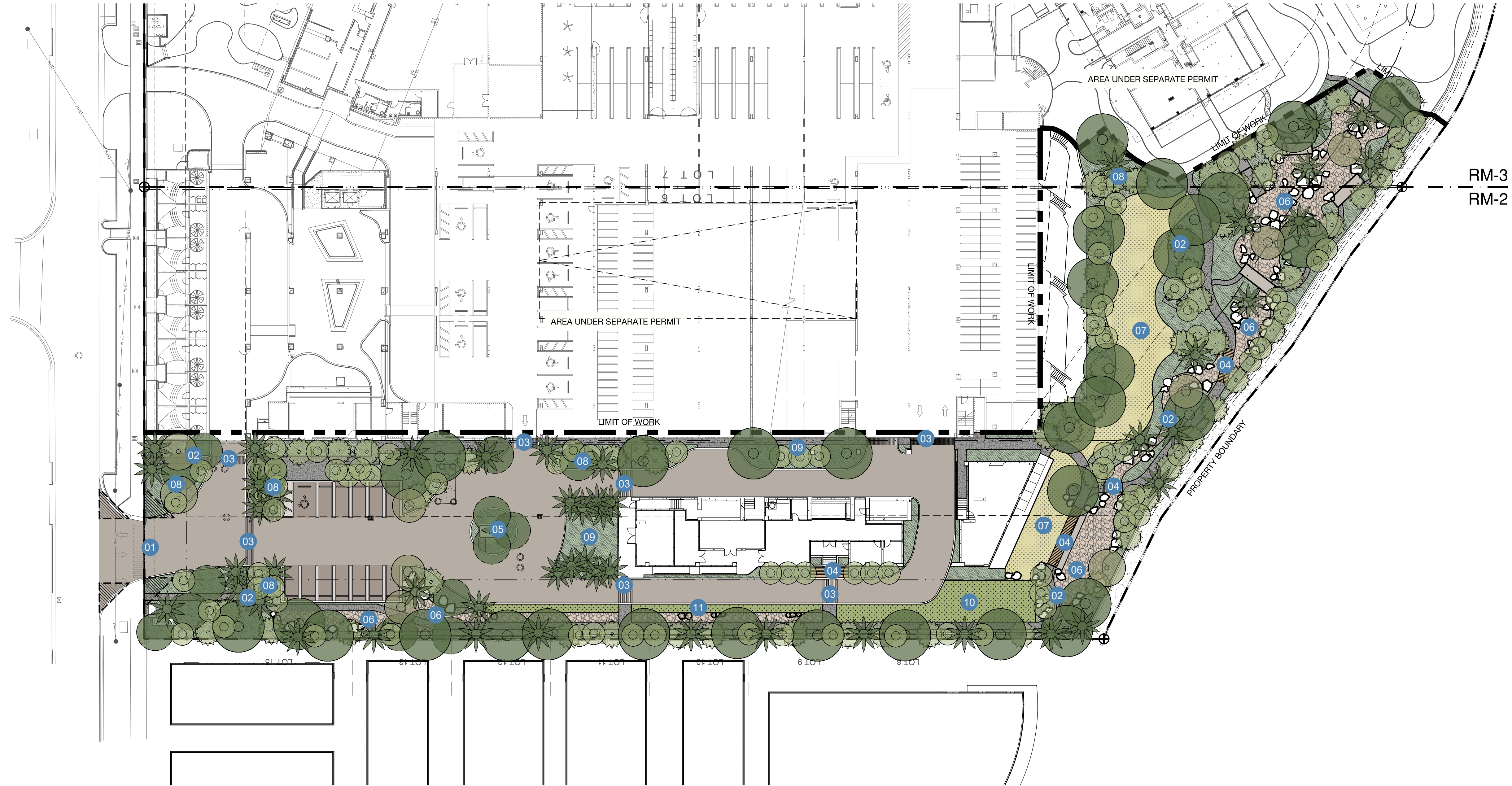


FLAMINGO
1420 BAY ROAD, MIAMI BEACH

LEGEND

1. VEHICULAR ACCESS
2. PEDESTRIAN CIRCULATION
3. PEDESTRIAN CROSSING
4. DECK
5. CONTROL POINT
6. BIO-SWALE
7. LAWN AREA
8. HIGH DENSITY PLANTING AREA
9. LOW DENSITY PLANTING AREA
10. FIRE TRUCK STAGING AREA
11. REINFORCED GRASS AREA



Stantec Architecture Inc. - AA26000733
Andrew Burnett Lic. # AR98495
Adriana Jaegerman Lic. # 72428

Stantec Architecture Inc.
One Biscayne Tower Suite 1670
2 South Biscayne Boulevard
Miami, FL 33131-1804
Tel: (305) 482-8700 / Fax: (305) 482-8770

DRB FINAL SUBMITTAL

04.05.2021

LAND
7294 NW 1st COURT, MIAMI, FL 33150
614.439.4885 / WWW.LAND.DESIGN

Copyright Reserved

L-100.1

Note: When printed on 11 x 17 paper scale is halved

FLAMINGO
1420 BAY ROAD, MIAMI BEACH

Stantec Architecture Inc. - AA26000733
Andrew Burnett Lic. # AR98495
Adriana Jaegerman Lic. # 72428

Stantec



Stantec Architecture Inc.
One Biscayne Tower Suite 1670
2 South Biscayne Boulevard
Miami, FL 33131-1804
Tel: (305) 482-8700 / Fax: (305) 482-8770

DRB FINAL SUBMITTAL

04.05.2021

Copyright Reserved

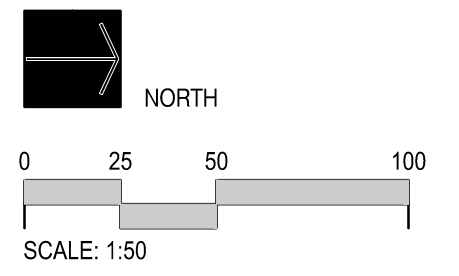
L-101.1

LANDSCAPE PER ZONE	
ZONE	AREA (SF)

EXISTING - PRIOR TO ALL PHASES	
SOUTH TOWER	17,124 SF
PLAZA	16,989 SF
COURTYARD	73,332 SF
POOL & GARDEN	49,330 SF
SITE	28,275 SF
TOTAL EXISTING	185,050 SF

PROPOSED - AFTER PHASE 6	
SOUTH TOWER	19,428 SF
PLAZA	27,279 SF
COURTYARD-LAWN	59,733 SF
POOL & GARDEN	52,858 SF
SITE	34,557 SF
TOTAL PROPOSED	193,855 SF

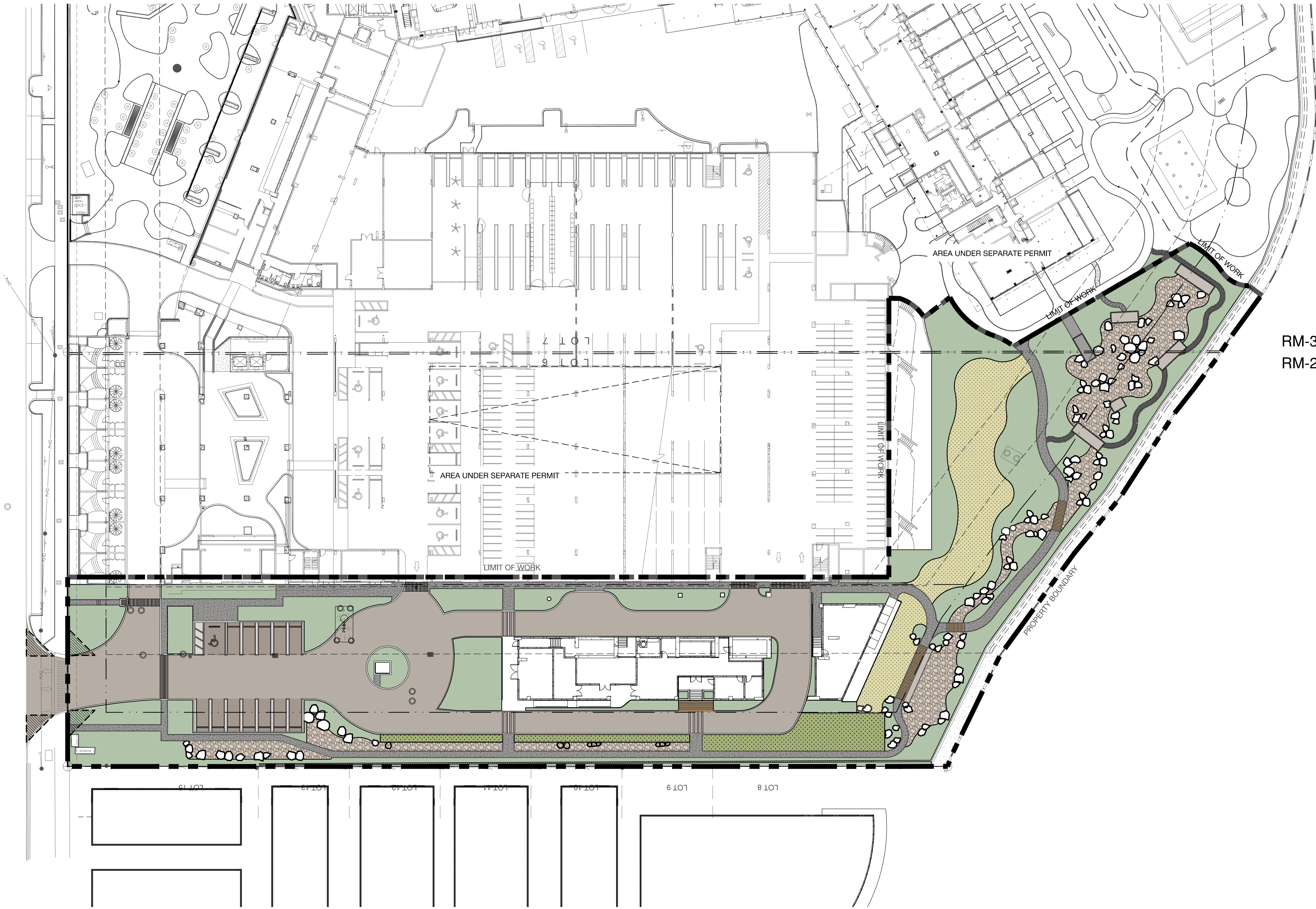
TOTAL DIFFERENCE: + 8,805 SF



LAND
7294 NW 1st COURT, MIAMI, FL 33150
614-439-4895 / WWW.LAND.DESIGN

Note: When printed on 11 x 17 paper scale is halved

PROPOSED		
TOTAL OF PHASE 6	76,147 SF	100 %
LANDSCAPE AREAS	28,504 SF	37 %
BIO-SWALE	6,053 SF	8 %
PERMEABLE PAVEMENTS	18,361 SF	24 %
PEDESTRIAN CIRCULATION	6,792 SF	9 %
BUILDINGS FOOTPRINTS + UTILITIES	16,437 SF	22 %

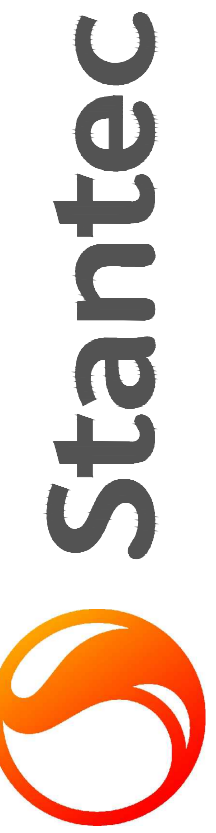


LANDSCAPE AREAS
PHASE 6

FLAMINGO
1420 BAY ROAD, MIAMI BEACH

RM-3
RM-2

Stantec Architecture Inc - AA26000733
Andrew Burnett Lic. # AR98495
Adriana Jaegerman Lic. # 72428



Stantec Architecture Inc.
One Biscayne Tower Suite 1670
2 South Biscayne Boulevard
Miami, FL 33131-1804
Tel: (305) 482-8700 / Fax: (305) 482-8770

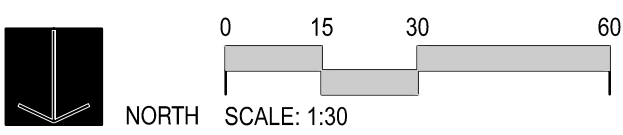
DRB FINAL SUBMITTAL

04.05.2021

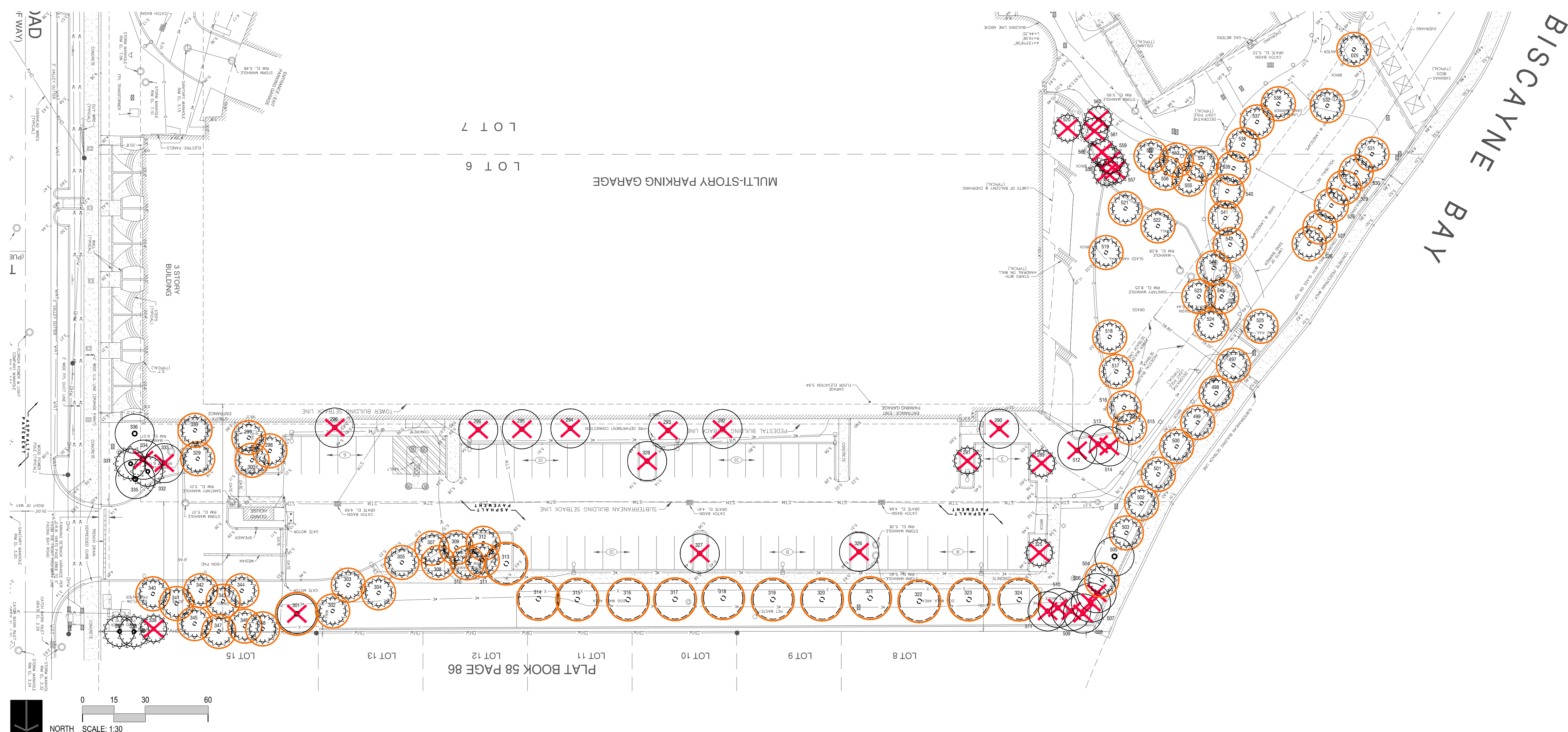
LAND
7294 NW 1st COURT, MIAMI, FL 33150
614.439.4885 / WWW.LAND.DESIGN

Copyright Reserved

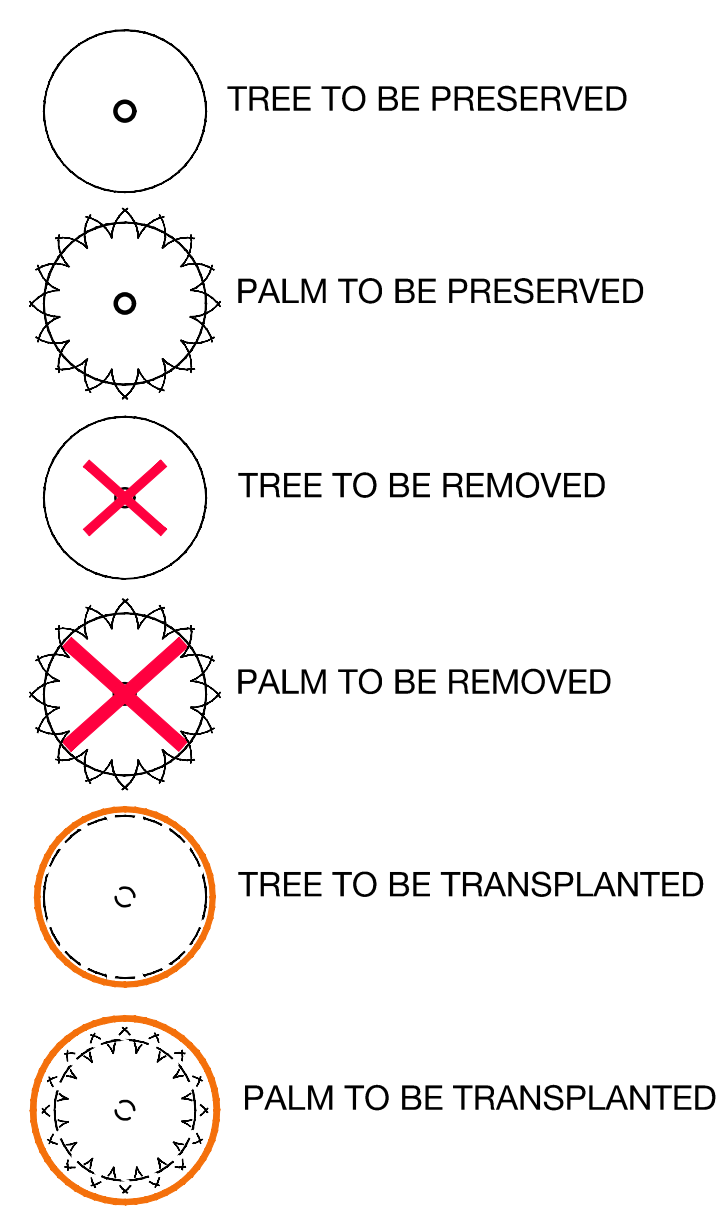
L-101.2



Note: When printed on 11 x 17 paper scale is halved



TREE DISPOSITION LEGEND



TREE DISPOSITION PLAN

FLAMINGO
1420 BAY ROAD, MIAMI BEACH

Stantec Architecture Inc - AA26000733
Andrew Burnett Lic. # AR98495
Adriana Jaegerman Lic. # 72428

DEFINITIONS

1. TREE: ANY SELF-SUPPORTING WOODY PLANT OR PALM WHICH USUALLY HAS A SINGLE MAIN AXIS OR TRUNK, WITH A MINIMUM TRUNK DIAMETER AT BREAST HEIGHT OF TWO INCHES AND A MINIMUM OVERALL HEIGHT OF 12 FEET. THIS DEFINITION EXCLUDES PLANTS WHICH ARE DEFINED AS SHRUBS, HEDGES, VINES, OR GROUND COVERS. PALMS SHALL HAVE A MINIMUM HEIGHT OF 14 FEET IN ORDER TO BE CLASSIFIED AS A TREE. - CITY OF MIAMI BEACH CODE OF ORDINANCES, CHAPTER 46, DIVISION 2

TREES & PLANTING TO BE PRESERVED NOTES

1. EXISTING TREES TO BE PRESERVED SHALL BEAR SAME RELATIONSHIP TO FINISHED GRADE AS THEY BEAR TO PRE-CONSTRUCTION GRADE.
2. EXISTING TREES TO BE PRESERVED SHALL BE PROTECTED WITH STURDY, WEATHERPROOF FENCING AT A MINIMUM FOUR (4) FEET HEIGHT INSTALLED NO CLOSER TO THE TREE TRUNK THAN ITS DRIPLINE. THIS FENCE SHALL BE MAINTAINED IN WORKING ORDER DURING ALL PHASES OF CONSTRUCTION. MAINTAIN TREE PROTECTION ZONES FREE OF WEEDS AND TRASH.
3. NO WORK SHALL BE CONDUCTED WITHIN THE DRIPLINE, UNLESS REVIEWED AND APPROVED BY THE LANDSCAPE ARCHITECT. ALL WORK APPROVED WITHIN THE DRIPLINE SHALL BE COMPLETED BY HAND. PROTECT ROOT SYSTEMS FROM PONDING, ERODING, OR EXCESSIVE WETTING.
4. THE PROJECT LIMIT OF CONSTRUCTION AND ALL EXISTING VEGETATION TO REMAIN IS TO BE CLEARLY DEFINED BY STURDY, WEATHERPROOF FENCING AT A MINIMUM OF FOUR (4) FEET HIGH.

TREES & PLANTING TO BE RELOCATED NOTES

1. THE CONTRACTOR IS TO ROOT PRUNE ALL PLANT MATERIAL 90 DAYS MINIMUM IN ADVANCE OF MOVING PLANT MATERIAL.
2. THE CONTRACTOR IS TO WARRANTY ALL RELOCATED PLANT MATERIAL.
3. THE CONTRACTOR IS RESPONSIBLE FOR THE WATERING AND FERTILIZING OF ALL PLANT RELOCATED PLANT MATERIAL UNTIL PROJECT COMPLETION.
4. ALL RELOCATED PLANT MATERIAL IS TO BE APPROPRIATELY BRACED.
5. CONTRACTOR TO NOTIFY LANDSCAPE ARCHITECT TWO WEEKS IN ADVANCE OF ALL SCHEDULED WORK PERTAINING TO THE RELOCATION OF SITE TREES.

TREES & PLANTING TO BE REMOVED NOTES

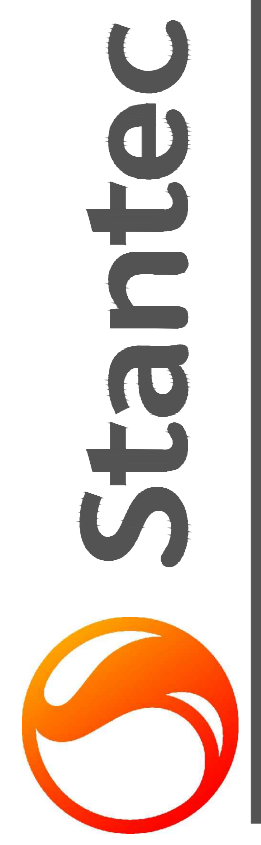
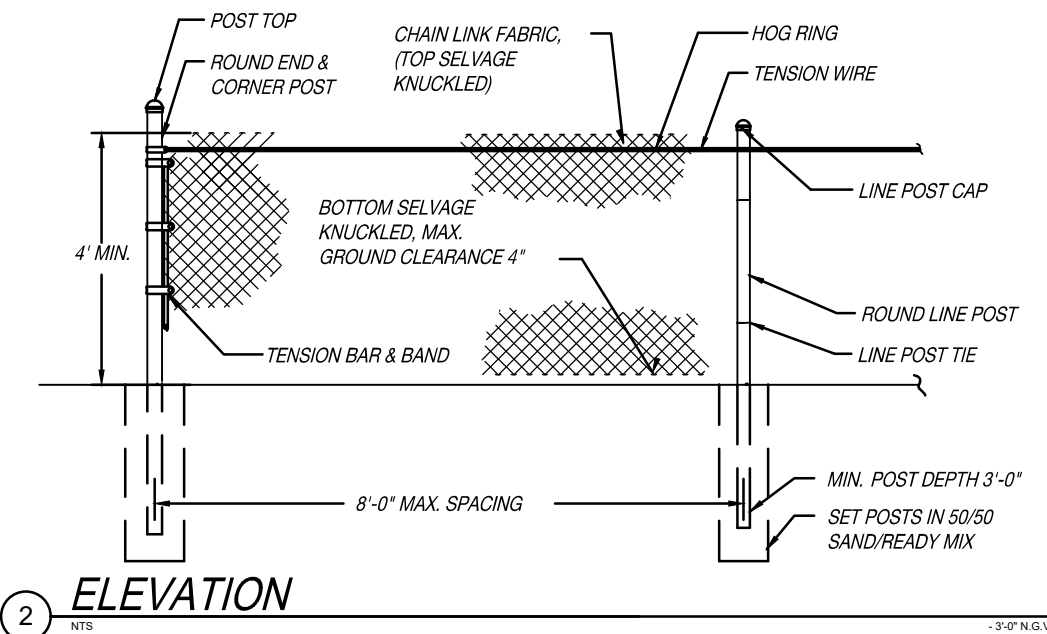
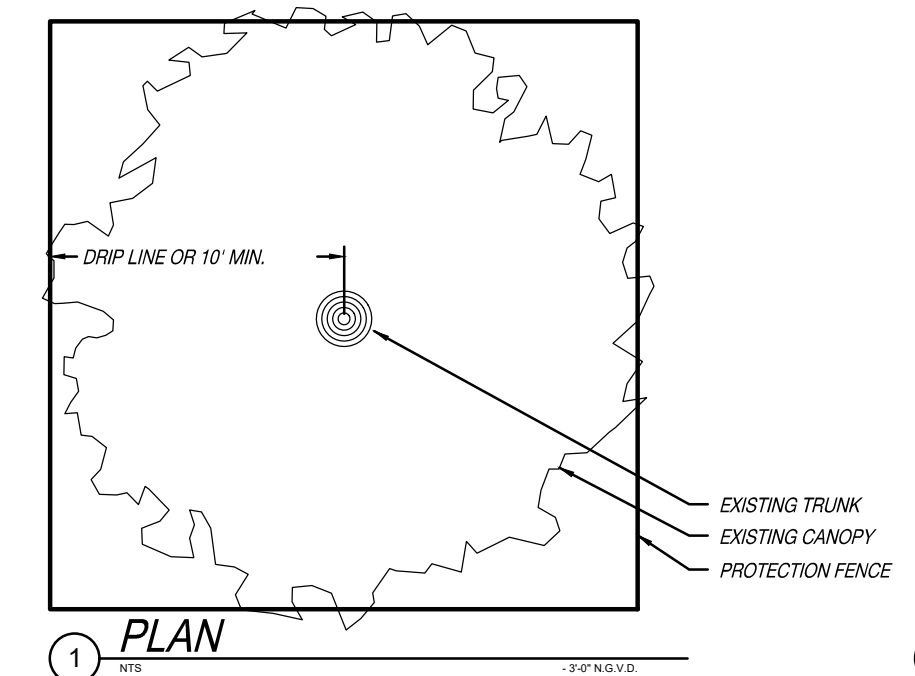
1. THE CONTRACTOR IS TO COMPLETELY REMOVE ALL PLANTER MATERIAL DESIGNATED FOR REMOVAL (I.E. ROOT BALL, DEBRIS, SAW DUST, ETC.).
2. THE CONTRACTOR IS TO BACKFILL ALL EXCAVATED ROOT BALLS FLUSH TO THE ADJACENT ELEVATION LEVEL.
3. CONTRACTOR TO NOTIFY LANDSCAPE ARCHITECT TWO WEEKS IN ADVANCE OF ALL SCHEDULED WORK PERTAINING TO THE RELOCATION OF SITE TREES.

TREE PROTECTION NOTES

1. PROTECTION FENCE SHALL BE GALVANIZED CHAIN LINK STANDARD 2"X2" MESH.
2. PROVIDE HINGED GATE.
3. ALTERNATE: 2X4 WOOD POSTS (6'-0" O.C. MAX) WITH THREE EVENLY SPACED WOODEN RAILS. MIN. HT 4'
4. POSTS MAY BE SHIFTED TO AVOID ROOTS.
5. NO STORAGE, DEBRIS, VEHICULAR TRAFFIC OR EQUIPMENT CLEANING IS ALLOWED WITHIN THE PROTECTED AREA.
6. REFER TO MUNICIPAL REQUIREMENTS FOR ADDITIONAL INFORMATION.

TREE PRUNING

1. RETAIN CERTIFIED ARBORIST TO UNDERTAKE PRUNING OF ANY ON SITE OR OFF SITE PLANTING MATERIAL TO REMAIN.
2. USE BEST PRACTICES AND FOLLOW MUNICIPAL GUIDELINES FOR ALL PRUNING. DO NOT REMOVE MORE MATERIAL THAN ALLOWED. DO NOT LEAVE MATERIAL MISSHAPEN.



Stantec Architecture Inc.
One Biscayne Tower Suite 1670
2 South Biscayne Boulevard
Miami, FL 33131-1804
Tel: (305) 482-8700 / Fax: (305) 482-8770

DRB FINAL SUBMITTAL

04.05.2021

LAND
7294 NW 1st COURT, MIAMI, FL 33150
614.439.4895 / WWW.LAND.DESIGN

Copyright Reserved

TD-100.1

Note: When printed on 11 x 17 paper scale is halved

TREE DISPOSITION SCHEDULE

FLAMINGO
1420 BAY ROAD, MIAMI BEACH

Stantec Architecture Inc - AA2600733
Andrew Burnett Lic. # AR98495
Adriana Jaegerman Lic. # 72428



Stantec Architecture Inc.
One Biscayne Tower Suite 1670
2 South Biscayne Boulevard
Miami, FL 33131-1804
Tel: (305) 482-8700 / Fax: (305) 482-8770

DRB FINAL SUBMITTAL

04.05.2021

LAND
7294 NW 1st COURT, MIAMI, FL 33150
614-439-4885 / WWW.LAND.DESIGN

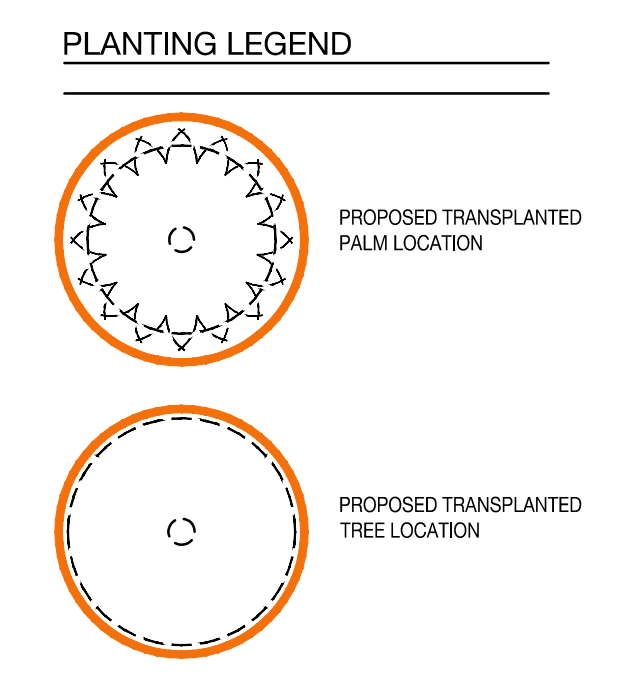
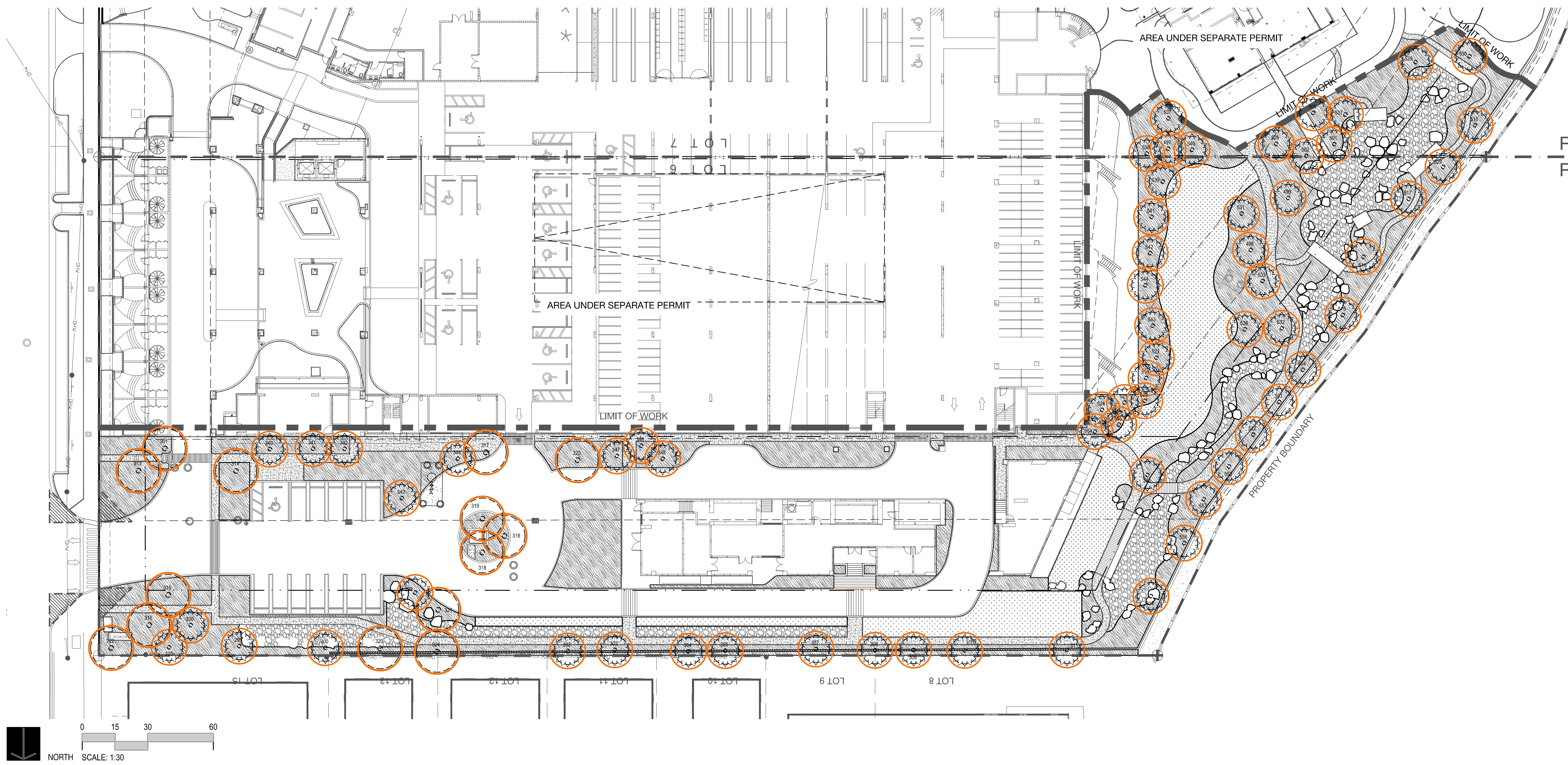
Copyright Reserved

TD-100.2

Note: When printed on 11 x 17 paper scale is halved

TREE NUMBER	TAG No. / LATIN NAME	COMMON NAME	DIAMETER at BREAST HEIGHT (in inches)	DBH MULTI TRUNK	HEIGHT OF CANOPY TREES (in feet)	CLEAR TRUNK HEIGHT OF PALM TREES (in feet)	CANOPY DIAMETER (in feet)	CANOPY (in Sq. Ft.)	DISPOSITION	CONDITION	REMOVAL- MUNICIPAL CRITERIA AND NOTES		
											PALMS 1:1	DBH	NOTES
289	Veitchia montgomeryana	MONTGOMERY PALM	14			25	20	314	REMOVE		1		
290	Conocarpus erectus	SILVER BUTTON WOOD	7		15		15	177	REMOVE			7	
291	Veitchia montgomeryana	MONTGOMERY PALM	15			25	30	707	REMOVE		1		
292	UNKNOWN		7		15		15	177	REMOVE			7	
293	Conocarpus erectus	SILVER BUTTON WOOD	7		15		15	177	REMOVE			7	
294	Conocarpus erectus	SILVER BUTTON WOOD	7		15		15	177	REMOVE			7	
295	Conocarpus erectus	SILVER BUTTON WOOD	8		12		15	177	REMOVE			8	
296	Conocarpus erectus	SILVER BUTTON WOOD	7		12		12	113	REMOVE			7	
297		POINCIANA	6		12		10	79	REMOVE			6	
298	Coccoloba uvifera	COCONUT PALM	10			15	15	177	TRANSPLANT				
299	Coccoloba uvifera	COCONUT PALM	9			22	15	177	TRANSPLANT				
300	Coccoloba uvifera	COCONUT PALM	10			12	15	177	TRANSPLANT				
301		POINCIANA	14		30		45	1590	TRANSPLANT				
302	Coccoloba uvifera	COCONUT PALM	7			20	12	113	TRANSPLANT				
303	Coccoloba uvifera	COCONUT PALM	7			15	12	113	TRANSPLANT				
304	Coccoloba uvifera	COCONUT PALM	8			15	12	113	TRANSPLANT				
305	Coccoloba uvifera	COCONUT PALM	8			20	12	113	TRANSPLANT				
306	Coccoloba uvifera	COCONUT PALM	8			12	12	113	TRANSPLANT				
307	Coccoloba uvifera	COCONUT PALM	7			22	15	177	TRANSPLANT				
308	Coccoloba uvifera	COCONUT PALM	7			12	15	177	TRANSPLANT				
309	Coccoloba uvifera	COCONUT PALM	7			20	15	177	TRANSPLANT				
310	Coccoloba uvifera	COCONUT PALM	8			12	15	177	TRANSPLANT				
311	Coccoloba uvifera	COCONUT PALM	7			18	15	177	TRANSPLANT				
312	Coccoloba uvifera	COCONUT PALM	8			18	12	113	TRANSPLANT				
313	Bursera simaruba	GUMBO LIMBO	9		18		20	314	TRANSPLANT				
314	Bucida buceras	BLACK OLIVE	14		25		30	707	TRANSPLANT				
315	Bucida buceras	BLACK OLIVE	8		20		20	314	TRANSPLANT				
316	Quercus virginiana	LIVE OAK	7		20		20	314	TRANSPLANT				
317	Quercus virginiana	LIVE OAK	13		25		25	491	TRANSPLANT				
318	Quercus virginiana	LIVE OAK	10		25		25	491	TRANSPLANT				
319	Quercus virginiana	LIVE OAK	12		20		20	314	TRANSPLANT				
320	Quercus virginiana	LIVE OAK	7		20		20	314	TRANSPLANT				
321	Quercus virginiana	LIVE OAK	10		25		20	314	TRANSPLANT				
322	Quercus virginiana	LIVE OAK	8		20		20	314	TRANSPLANT				
323	Quercus virginiana	LIVE OAK	6		15		15	177	TRANSPLANT				
324	Quercus virginiana	LIVE OAK	9		25		25	491	TRANSPLANT				
325	Veitchia montgomeryana	MONTGOMERY PALM	15		30		35	962	REMOVE			15	
326		UNKNOWN	9		20		25	491	REMOVE			9	
327		UNKNOWN	10		25		25	491	REMOVE			10	
328		UNKNOWN	8		25		25	491	REMOVE			8	
329	Coccoloba uvifera	COCONUT PALM	9			20	15	177	TRANSPLANT				
330	Coccoloba uvifera	COCONUT PALM	9			30	15	177	TRANSPLANT				
331	Coccoloba uvifera	COCONUT PALM	8			25	15	177	REMAIN				
332	Coccoloba uvifera	COCONUT PALM	9			25	15	177	REMAIN				
333		UNKNOWN	5			8	12	113	REMOVE			5	
334		UNKNOWN	6			10	12	113	REMOVE			6	
335		UNKNOWN	6			10	12	113	REMAIN				
336	Swietenia Macrophylla	MAHOGANY	17		35		30	707	REMAIN				
337		UNKNOWN	24		45		35	962	REMAIN				
338	Coccoloba uvifera	COCONUT PALM	7			8	12	113	REMAIN				
339	Sabal palmetto	SABAL PALM	16			9	15	177	REMOVE		1		
340	Coccoloba uvifera	COCONUT PALM	9			15	15	177	TRANSPLANT				
341	Coccoloba uvifera	COCONUT PALM	9			15	15	177	TRANSPLANT				
342	Coccoloba uvifera	COCONUT PALM	8			20	15	177	TRANSPLANT				
343	Coccoloba uvifera	COCONUT PALM	10			20	15	177	TRANSPLANT				
344	Coccoloba uvifera	COCONUT PALM	9			20	15	177	TRANSPLANT				
345	Coccoloba uvifera	COCONUT PALM	6			6	15	177	TRANSPLANT				
346	Coccoloba uvifera	COCONUT PALM	7			10	15	177	TRANSPLANT				
347	Coccoloba uvifera	COCONUT PALM	7			7	15	177	TRANSPLANT				
348	Coccoloba uvifera	COCONUT PALM	9			15	15	177	TRANSPLANT				
497	Coccoloba uvifera	COCONUT PALM	8			15	15	177	TRANSPLANT				
498	Coccoloba uvifera	COCONUT PALM	9			12	12	113	TRANSPLANT				
499	Coccoloba uvifera	COCONUT PALM	9			15	12	113	TRANSPLANT				

TREE NUMBER	TAG No. / LATIN NAME	COMMON NAME	DIAMETER at BREAST HEIGHT (in inches)	DBH MULTI TRUNK	HEIGHT OF CANOPY TREES (in feet)	CLEAR TRUNK HEIGHT OF PALM TREES (in feet)	CANOPY DIAMETER (in feet)	CANOPY (in Sq. Ft.)	DISPOSITION	CONDITION	REMOVAL- MUNICIPAL CRITERIA AND NOTES		
											PALMS 1:1	DBH	NOTES
500	Coccoloba uvifera	COCONUT PALM	9			15	15	177	TRANSPLANT				
501	Coccoloba uvifera	COCONUT PALM	8			15	15	177	TRANSPLANT				
502	Coccoloba uvifera	COCONUT PALM	9			15	12	113	TRANSPLANT				
503	Coccoloba uvifera	COCONUT PALM	10			15	12	113	TRANSPLANT				
504	Coccoloba uvifera	COCONUT PALM	10			15	12	113	TRANSPLANT				
505	Bursera simaruba	GUMBO LIMBO	10		15		15	177	REMAIN				
506		UNKNOWN	4		15		10	79	REMOVE			4	
507		UNKNOWN	5		15		8	50	REMOVE			5	
508		UNKNOWN	5		15		8	50	REMOVE			5	
509		UNKNOWN	5		15		8	50	REMOVE			5	
510		UNKNOWN	5		15		8	50	REMOVE			5	
511		UNKNOWN	5		15		10	79	REMOVE			5	
512		UNKNOWN	5		15		12	113	REMOVE			5	
513		UNKNOWN	5		15		12	113	REMOVE			5	
514		UNKNOWN	5		15		15	177	REMOVE			5	
515	Coccoloba uvifera	COCONUT PALM	10			15	15	177	TRANSPLANT				
516	Coccoloba uvifera	COCONUT PALM	9			20	15	177	TRANSPLANT				
517	Coccoloba uvifera	COCONUT PALM	8			20	15	177	TRANSPLANT				
518	Coccoloba uvifera	COCONUT PALM	8			15	15	177	TRANSPLANT				
519	Coccoloba uvifera	COCONUT PALM	7			20	15	177	TRANSPLANT				
520	Washingtonia robusta	WASHINGTONIA PALM	12			5	15	177	REMOVE		1		
521	Coccoloba uvifera	COCONUT PALM	8			15	15	177	TRANSPLANT				
522	Coccoloba uvifera	COCONUT PALM	8			15	15	177	TRANSPLANT				
523	Coccoloba uvifera	COCONUT PALM	8			15	15	177	TRANSPLANT				
524	Coccoloba uvifera	COCONUT PALM	9			15	15	177	TRANSPLANT				
525	Coccoloba uvifera	SEAGRAPE	6		8		8	50	TRANSPLANT				
526	Coccoloba uvifera	COCONUT PALM	8			12	12	113	TRANSPLANT				
527	Coccoloba uvifera	COCONUT PALM	7			12	12	113	TRANSPLANT				
528	Coccoloba uvifera	COCONUT PALM	7			12	12	113	TRANSPLANT				
529	Coccoloba uvifera	COCONUT PALM	8			12	12	113	TRANSPLANT				
530	Coccoloba uvifera	COCONUT PALM	7			12	12	113	TRANSPLANT				
531	Coccoloba uvifera	COCONUT PALM	9			15	12	113	TRANSPLANT				
532	Coccoloba uvifera	COCONUT PALM	9			8	12	113	TRANSPLANT				
533	Coccoloba uvifera	COCONUT PALM	8			15	12	113	TRANSPLANT				
536	Coccoloba uvifera	COCONUT PALM	7			15	15	177	TRANSPLANT				
537	Coccoloba uvifera	COCONUT PALM	8			15	15	177	TRANSPLANT				
538	Coccoloba uvifera	COCONUT PALM	8			12	15	177	TRANSPLANT				
539	Coccoloba uvifera	COCONUT PALM	8			15	12	113	TRANSPLANT				
540	Coccoloba uvifera	COCONUT PALM	9			15	12	113	TRANSPLANT				
541	Coccoloba uvifera	COCONUT PALM	9			15	12	113	TRANSPLANT				
542	Coccoloba uvifera	COCONUT PALM	8			15	12	113	TRANSPLANT				
543	Coccoloba uvifera	COCONUT PALM	8			15	12	113	TRANSPLANT				
544	Coccoloba uvifera	COCONUT PALM	10			15	15	177	TRANSPLANT				
552	Coccoloba uvifera	COCONUT PALM	8			15	15	177	TRANSPLANT				
553	Coccoloba uvifera	COCONUT PALM	9			12	15	177	TRANSPLANT				
554	Coccoloba uvifera	COCONUT PALM	8			12	12	113	TRANSPLANT				
555	Coccoloba uvifera	COCONUT PALM	8			20	15	177	TRANSPLANT				
556	Coccoloba uvifera	COCONUT PALM	9			20	15	177	TRANSPLANT				
557		UNKNOWN PALM	4			10	6	28	REMOVE			1	
558		UNKNOWN PALM	4			10	6	28	REMOVE			1	
559		UNKNOWN PALM	4			10	6	28	REMOVE			1	
560		UNKNOWN PALM	5			10	6	28	REMOVE			1	
561		UNKNOWN PALM	4			10	6	28	REMOVE			1	
562		UNKNOWN PALM	4			10	6	28	REMOVE			1	
TOTAL PALMS REMOVED:											10		
TOTAL DBH REMOVED:												146	
PROPOSED ON SITE MITIGATION BREAKDOWN:													
ESTIMATED REQUIREMENT:												59	
TREES - 2" DBH/12' HT MIN:												20	
TREES - 4" DBH/16' HT MIN:												11	
NATIVE TREES - 1.5" DBH/10' HT MIN:												13	
TOTAL PROPOSED REPLACEMENT TREES (REFER TO PLANTING PLANS):												103	



TREE TRANSPLANT PLAN

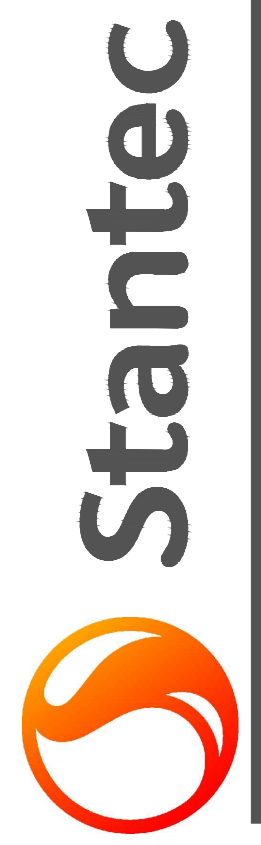
FLAMINGO
1420 BAY ROAD, MIAMI BEACH

Stantec Architecture Inc - AA26000733
Andrew Burnett Lic. # AR98495
Adriana Jaegerman Lic. # 72428

TREE TRANSPLANT SCHEDULE

TREE NUMBER	TAG No. / LATIN NAME	COMMON NAME	DIAMETER at BREAST HEIGHT (in inches)	DBH MULTI TRUNK	HEIGHT OF CANOPY TREES (in feet)	CLEAR TRUNK HEIGHT OF PALM TREES (in feet)	CANOPY DIAMETER (in feet)	CANOPY (in Sq. Ft.)	DISPOSITION	CONDITION
298	Cocos nucifera	COCONUT PALM	10			15	15	177	TRANSPLANT	
299	Cocos nucifera	COCONUT PALM	9			22	15	177	TRANSPLANT	
300	Cocos nucifera	COCONUT PALM	10			12	15	177	TRANSPLANT	
301	Cocos nucifera	POINCIANA	14		30		45	1590	TRANSPLANT	
302	Cocos nucifera	COCONUT PALM	8			20	12	113	TRANSPLANT	
303	Cocos nucifera	COCONUT PALM	7			15	12	113	TRANSPLANT	
304	Cocos nucifera	COCONUT PALM	8			15	12	113	TRANSPLANT	
305	Cocos nucifera	COCONUT PALM	8			20	12	113	TRANSPLANT	
306	Cocos nucifera	COCONUT PALM	8			12	12	113	TRANSPLANT	
307	Cocos nucifera	COCONUT PALM	7			22	15	177	TRANSPLANT	
308	Cocos nucifera	COCONUT PALM	7			12	15	177	TRANSPLANT	
309	Cocos nucifera	COCONUT PALM	7			20	15	177	TRANSPLANT	
310	Cocos nucifera	COCONUT PALM	8			12	15	177	TRANSPLANT	
311	Cocos nucifera	COCONUT PALM	7			18	15	177	TRANSPLANT	
312	Cocos nucifera	COCONUT PALM	8			18	12	113	TRANSPLANT	
313	Bursera simaruba	GUMBO LIMBO	9		18		20	314	TRANSPLANT	
314	Bucida buceras	BLACK OLIVE	14		25		30	707	TRANSPLANT	
315	Bucida buceras	BLACK OLIVE	8		20		20	314	TRANSPLANT	
316	Quercus virginiana	LIVE OAK	7		20		20	314	TRANSPLANT	
317	Quercus virginiana	LIVE OAK	13		25		25	491	TRANSPLANT	
318	Quercus virginiana	LIVE OAK	10		25		25	491	TRANSPLANT	
319	Quercus virginiana	LIVE OAK	12		20		20	314	TRANSPLANT	
320	Quercus virginiana	LIVE OAK	7		20		20	314	TRANSPLANT	
321	Quercus virginiana	LIVE OAK	10		25		20	314	TRANSPLANT	
322	Quercus virginiana	LIVE OAK	8		20		20	314	TRANSPLANT	
323	Quercus virginiana	LIVE OAK	6		15		15	177	TRANSPLANT	
324	Quercus virginiana	LIVE OAK	9		25		25	491	TRANSPLANT	
329	Cocos nucifera	COCONUT PALM	9			20	15	177	TRANSPLANT	
330	Cocos nucifera	COCONUT PALM	9			30	15	177	TRANSPLANT	
340	Cocos nucifera	COCONUT PALM	9			15	15	177	TRANSPLANT	
341	Cocos nucifera	COCONUT PALM	9			15	15	177	TRANSPLANT	
342	Cocos nucifera	COCONUT PALM	8			20	15	177	TRANSPLANT	
343	Cocos nucifera	COCONUT PALM	10			20	15	177	TRANSPLANT	
344	Cocos nucifera	COCONUT PALM	9			20	15	177	TRANSPLANT	
345	Cocos nucifera	COCONUT PALM	10			6	15	177	TRANSPLANT	
346	Cocos nucifera	COCONUT PALM	7			10	15	177	TRANSPLANT	
347	Cocos nucifera	COCONUT PALM	7			7	15	177	TRANSPLANT	
348	Cocos nucifera	COCONUT PALM	9			15	15	177	TRANSPLANT	
497	Cocos nucifera	COCONUT PALM	8			15	15	177	TRANSPLANT	
498	Cocos nucifera	COCONUT PALM	9			12	12	113	TRANSPLANT	
499	Cocos nucifera	COCONUT PALM	9			15	12	113	TRANSPLANT	

TREE NUMBER	TAG No. / LATIN NAME	COMMON NAME	DIAMETER at BREAST HEIGHT (in inches)	DBH MULTI TRUNK	HEIGHT OF CANOPY TREES (in feet)	CLEAR TRUNK HEIGHT OF PALM TREES (in feet)	CANOPY DIAMETER (in feet)	CANOPY (in Sq. Ft.)	DISPOSITION	CONDITION
500	Cocos nucifera	COCONUT PALM	9			15	15	177	TRANSPLANT	
501	Cocos nucifera	COCONUT PALM	8			15	15	177	TRANSPLANT	
502	Cocos nucifera	COCONUT PALM	9			15	12	113	TRANSPLANT	
503	Cocos nucifera	COCONUT PALM	10			15	12	113	TRANSPLANT	
504	Cocos nucifera	COCONUT PALM	10			15	12	113	TRANSPLANT	
515	Cocos nucifera	COCONUT PALM	10			15	15	177	TRANSPLANT	
516	Cocos nucifera	COCONUT PALM	9			20	15	177	TRANSPLANT	
517	Cocos nucifera	COCONUT PALM	8			20	15	177	TRANSPLANT	
518	Cocos nucifera	COCONUT PALM	8			15	15	177	TRANSPLANT	
519	Cocos nucifera	COCONUT PALM	7			20	15	177	TRANSPLANT	
521	Cocos nucifera	COCONUT PALM	8			15	15	177	TRANSPLANT	
522	Cocos nucifera	COCONUT PALM	8			15	15	177	TRANSPLANT	
523	Cocos nucifera	COCONUT PALM	8			15	15	177	TRANSPLANT	
524	Cocos nucifera	COCONUT PALM	9			15	15	177	TRANSPLANT	
525	Coccoloba uvifera	SEAGRAPE	6		8		8	50	TRANSPLANT	
526	Cocos nucifera	COCONUT PALM	8			12	12	113	TRANSPLANT	
527	Cocos nucifera	COCONUT PALM	7			12	12	113	TRANSPLANT	
528	Cocos nucifera	COCONUT PALM	7			12	12	113	TRANSPLANT	
529	Cocos nucifera	COCONUT PALM	8			12	12	113	TRANSPLANT	
530	Cocos nucifera	COCONUT PALM	7			12	12	113	TRANSPLANT	
531	Cocos nucifera	COCONUT PALM	9			15	12	113	TRANSPLANT	
532	Cocos nucifera	COCONUT PALM	9			8	12	113	TRANSPLANT	
533	Cocos nucifera	COCONUT PALM	8			15	12	113	TRANSPLANT	
536	Cocos nucifera	COCONUT PALM	7			15	15	177	TRANSPLANT	
537	Cocos nucifera	COCONUT PALM	8			15	15	177	TRANSPLANT	
538	Cocos nucifera	COCONUT PALM	8			12	15	177	TRANSPLANT	
539	Cocos nucifera	COCONUT PALM	8			15	12	113	TRANSPLANT	
540	Cocos nucifera	COCONUT PALM	9			15	12	113	TRANSPLANT	
541	Cocos nucifera	COCONUT PALM	9			15	12	113	TRANSPLANT	
542	Cocos nucifera	COCONUT PALM	8			15	12	113	TRANSPLANT	
543	Cocos nucifera	COCONUT PALM	8			15	12	113	TRANSPLANT	
544	Cocos nucifera	COCONUT PALM	10			15	15	177	TRANSPLANT	
552	Cocos nucifera	COCONUT PALM	8			15	15	177	TRANSPLANT	
553	Cocos nucifera	COCONUT PALM	9			12	15	177	TRANSPLANT	
554	Cocos nucifera	COCONUT PALM	8			12	12	113	TRANSPLANT	
555	Cocos nucifera	COCONUT PALM	8			20	15	177	TRANSPLANT	
556	Cocos nucifera	COCONUT PALM	9			20	15	177	TRANSPLANT	



Stantec Architecture Inc.
One Biscayne Tower Suite 1670
2 South Biscayne Boulevard
Miami, FL 33131-1804
Tel: (305) 482-8700 / Fax: (305) 482-8770

DRB FINAL SUBMITTAL

04.05.2021

LAND
7294 NW 1st COURT, MIAMI, FL 33150
614.439.4895 / WWW.LAND.DESIGN

Copyright Reserved

TT-110

Note: When printed on 11 x 17 paper scale is halved