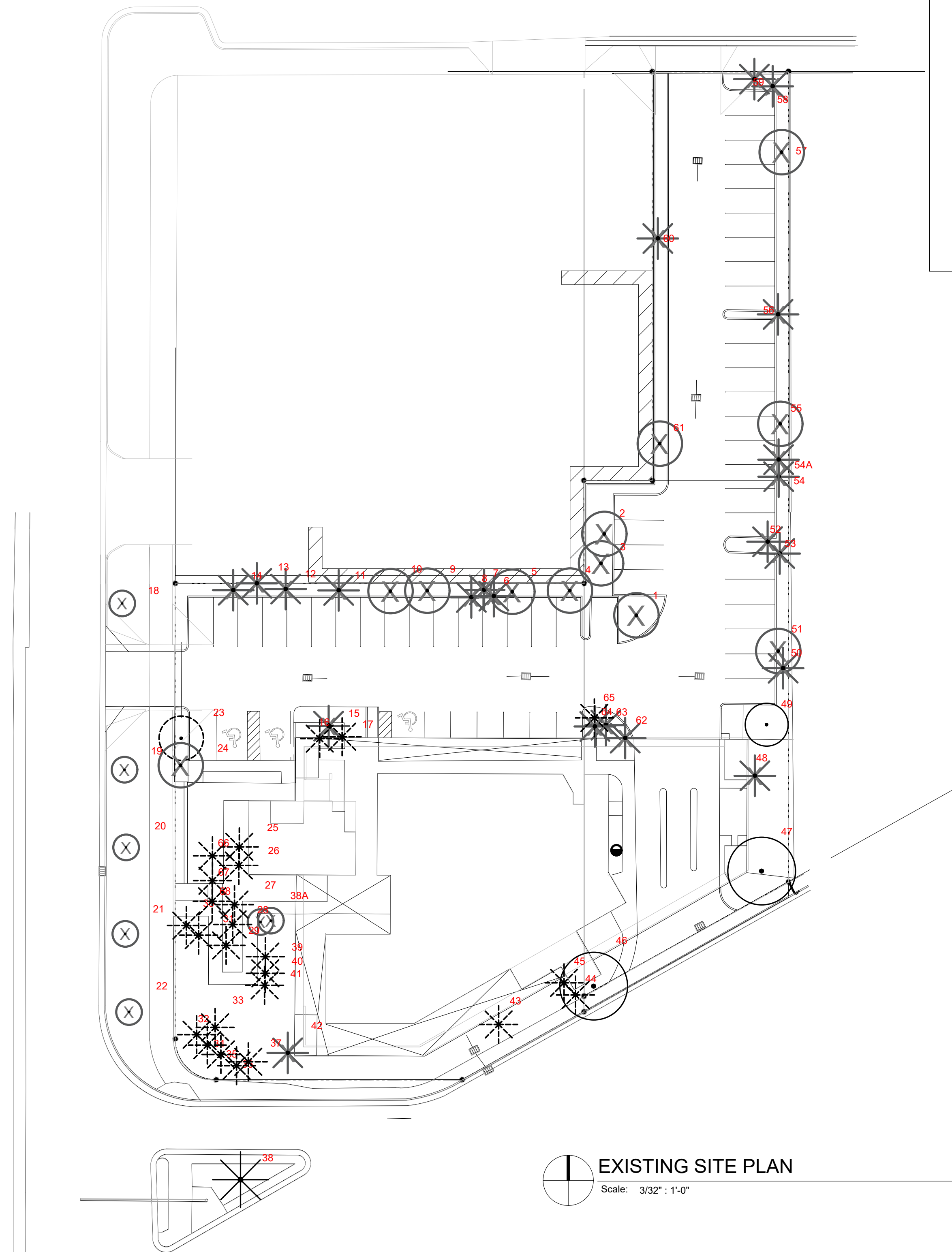
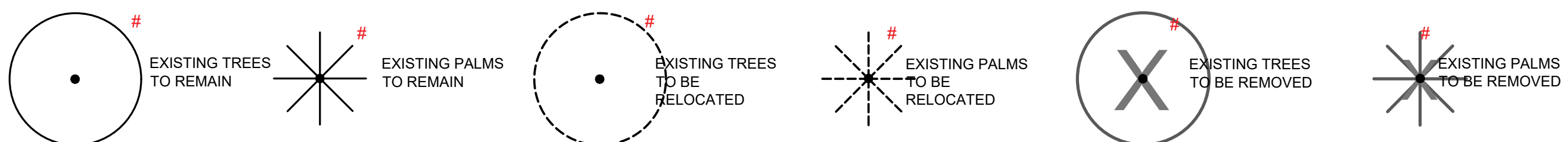
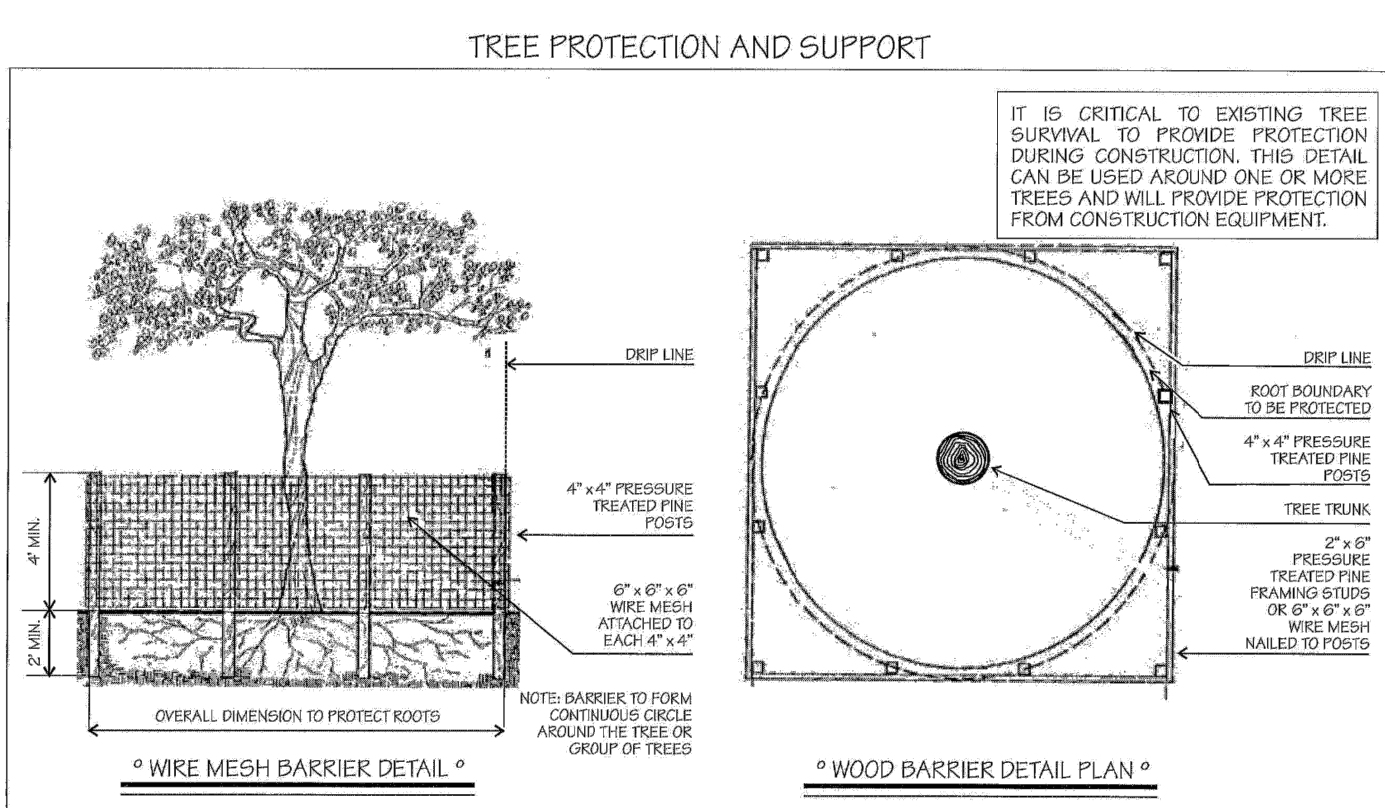
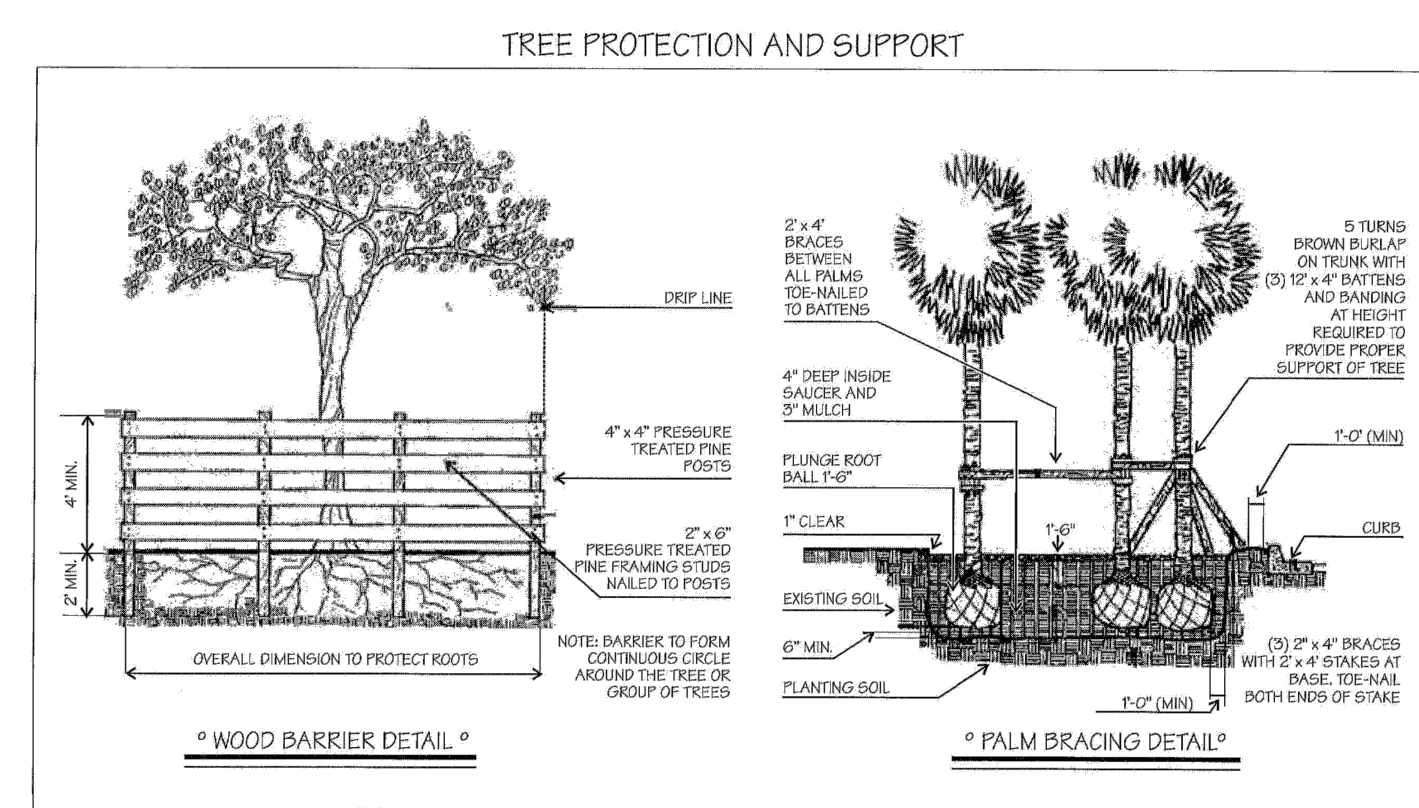


Tree #	Botanical Name	Common Name	DBH in inches	OAH in feet	Spread in feet	Notes/Condition (All are fair to good unless otherwise noted)
1	<i>Bursera simaruba</i>	Gumbo limbo	9.5	12-14	18-22	To be removed
2	<i>Quercus virginiana</i>	Live oak	25	35-40	25-30	To be removed
3	<i>Schefflera actinophylla</i>	Umbrella tree	15	25-30	20-25	Invasive species to be removed
4	<i>Quercus virginiana</i>	Live oak	12	30-35	15-20	To be removed
5	<i>Quercus virginiana</i>	Live oak	11.5	35-40	20-25	To be removed
6	<i>Washingtonia robusta</i>	Washingtonia palm	13	50-60	12-14	Exempt from permit requirements
7	<i>Washingtonia robusta</i>	Washingtonia palm	13	50-60	12-14	Exempt from permit requirements
8	<i>Washingtonia robusta</i>	Washingtonia palm	13	35-40	12-14	Exempt from permit requirements
9	<i>Quercus virginiana</i>	Live oak	14	35-40	30-35	To be removed
10	<i>Quercus virginiana</i>	Live oak	16	35-40	30-35	To be removed
11	<i>Washingtonia robusta</i>	Washingtonia palm	14	60-65	12-14	Exempt from permit requirements
12	<i>Cocos nucifera</i>	Coconut palm	9	40-45	20-25	To be removed
13	<i>Cocos nucifera</i>	Coconut palm	9	30-35	20-25	To be removed
14	<i>Cocos nucifera</i>	Coconut palm	9	35-40	20-25	To be removed
15	<i>Washingtonia robusta</i>	Washingtonia palm	14	60-65	12-14	Exempt from permit requirements
16	<i>Sabal palmetto</i>	Sabal palm	8	30-35	10-12	To be relocated
17	<i>Sabal palmetto</i>	Sabal palm	8	30-35	10-12	To be relocated
18	<i>Quercus virginiana</i>	Live oak	3	10-11	6-8	To be removed
19	<i>Quercus virginiana</i>	Live oak	3	10-11	6-8	To be removed
20	<i>Quercus virginiana</i>	Live oak	3	10-11	6-8	To be removed
21	<i>Quercus virginiana</i>	Live oak	3	10-11	6-8	To be removed
22	<i>Quercus virginiana</i>	Live oak	3	10-11	6-8	To be removed
23	<i>Tabebuia heterophylla</i>	Pink trumpet tree	12	35-40	20-25	To be relocated on site
24	<i>Quercus virginiana</i>	Live oak	16	20-25	20-25	To remain
25	<i>Sabal palmetto</i>	Sabal palm	8	30-35	10-12	To be relocated on site
26	<i>Sabal palmetto</i>	Sabal palm	8	30-35	10-12	To be relocated on site
27	<i>Sabal palmetto</i>	Sabal palm	8	30-35	10-12	To be relocated on site
28	<i>Sabal palmetto</i>	Sabal palm	8	30-35	10-12	To be relocated on site
29	<i>Sabal palmetto</i>	Sabal palm	8	30-35	10-12	To be relocated on site
30	<i>Sabal palmetto</i>	Sabal palm	8	30-35	10-12	To be relocated on site
31	<i>Sabal palmetto</i>	Sabal palm	8	20-25	10-12	To be relocated on site
32	<i>Sabal palmetto</i>	Sabal palm	8	25-30	10-12	To be relocated on site
33	<i>Sabal palmetto</i>	Sabal palm	7	30-35	10-12	To be relocated on site
34	<i>Sabal palmetto</i>	Sabal palm	7	25-30	10-12	To be relocated on site
35	<i>Sabal palmetto</i>	Sabal palm	10	30-35	10-12	To be relocated on site
36	<i>Sabal palmetto</i>	Sabal palm	6	30-35	10-12	To be relocated on site
37	<i>Sabal palmetto</i>	Sabal palm	7	30-35	10-12	To be relocated on site
38	<i>Phoenix sylvestris</i>	Date palm	12	25-30	15-20	To be relocated on site
38A	<i>Schefflera actinophylla</i>	Umbrella tree	24	40-45	30-35	Invasive species to be removed
39	<i>Sabal palmetto</i>	Sabal palm	8	20-25	10-12	To be relocated on site
40	<i>Sabal palmetto</i>	Sabal palm	8	30-35	10-12	To be relocated on site
41	<i>Sabal palmetto</i>	Sabal palm	8	30-35	10-12	To be relocated on site
42	<i>Phoenix reclinata</i>	Senegal Date palm	40	25-30	30-35	To be removed. Category 1, no mitigation required
43	<i>Sabal palmetto</i>	Sabal palm	8	30-35	10-12	To be relocated on site
44	<i>Sabal palmetto</i>	Sabal palm	8	30-35	10-12	To be relocated on site
45	<i>Sabal palmetto</i>	Sabal palm	8	40-45	10-12	To be relocated on site
46	<i>Bucida buceras</i>	Black Olive	28	40-45	30-35	To remain. Recommended pruning off roadway
47	<i>Bucida buceras</i>	Black Olive	24	40-45	60-65	To remain
48	<i>Ravenala madagascariensis</i>	Travelers Palm	16	15-20	15-20	To be removed
49	<i>Bursera simaruba</i>	Gumbo limbo	7	12-14	15-20	To remain
50	<i>Washingtonia robusta</i>	Washingtonia palm	13.5	50-60	12-14	Exempt from permit requirements
51	<i>Quercus virginiana</i>	Live oak	21	30-35	45-50	To be removed
52	<i>Washingtonia robusta</i>	Washingtonia palm	13	50-60	12-14	Exempt from permit requirements
53	<i>Washingtonia robusta</i>	Washingtonia palm	N/A	8-10	6-7	Exempt from permit requirements
54	<i>Washingtonia robusta</i>	Washingtonia palm	12	40-45	12-14	Exempt from permit requirements
54A	<i>Washingtonia robusta</i>	Washingtonia palm	N/A	6-7	5-6	Exempt from permit requirements
55	<i>Quercus virginiana</i>	Live oak	20	30-35	40-45	To be removed
56	<i>Washingtonia robusta</i>	Washingtonia palm	13	40-45	12-14	Exempt from permit requirements
57	<i>Quercus virginiana</i>	Live oak	20	30-35	40-45	To remain
58	<i>Washingtonia robusta</i>	Washingtonia palm	13	40-45	12-14	Exempt from permit requirements
59	<i>Washingtonia robusta</i>	Washingtonia palm	13	40-45	12-14	Exempt from permit requirements
60	<i>Washingtonia robusta</i>	Washingtonia palm	13	20-25	12-14	Exempt from permit requirements
61	<i>Quercus virginiana</i>	Live oak	12.5	20-25	20-25	Poor condition-remove
62	<i>Washingtonia robusta</i>	Washingtonia palm	13	35-40	12-14	Exempt from permit requirements
63	<i>Ptychostema elegans</i>	Alexander palm	4	30-35	8-10	Poor condition-remove
64	<i>Sabal palmetto</i>	Sabal palm	8	30-35	10-12	Relocate
65	<i>Sabal palmetto</i>	Sabal palm	8	20-25	10-12	Relocate
66	<i>Thrinax sp.</i>	Thatch palm	4	15-20	6-8	Relocate
67	<i>Thrinax sp.</i>	Thatch palm	4	15-20	6-8	Relocate
68	<i>Thrinax sp.</i>	Thatch palm	4	15-20	6-8	Relocate

DISPOSITION LEGEND



EXISTING SITE PLAN
Scale: 3/32" = 1'-0"



NOTE
EXISTING TREES SYMBOLS ARE GRAPHIC AND LOCATION MAY VARY SLIGHTLY

LANDSCAPE ARCHITECT
FL.R.L.A.L.C. #6687191
500 BISCAYNE BLVD
MIAMI, FL 33130
PH: 786-361-8888
PROJECT: 1801 ALTON RD
SEAL:

VINCENT A. FILIGENZI
LA #6687191

NOTE:
These architectural drawings and plans shall not be reproduced for use by any individual or entity or any other project without the written permission of the architect, V.F.D. INC. These drawings and plans shall not be reproduced for use by any individual or entity or any other project without the written permission of the architect, V.F.D. INC.

1801 ALTON RD
Landscape Design
1801 Alton Rd., Miami Beach, FL 33141

SHEET ISSUE:	REV #	DATE	DESCRIPTION
	#1	2.26.21	DRS LANDSCAPE

PROJECT #:
DRAWN BY: AJ
CHECKED BY: VF
DATE: 3.8.2021
DISCIPLINE / SHEET TITLE:

DISPOSITION PLAN

SHEET NUMBER:
LE-1.0

NOTE: FOR EXISTING TREE LIST SEE SHEET LE-1.0
OVERALL PLANT LIST

PROPOSED PLANT LIST						
SYM	BOTANICAL NAME	COMMON NAME	SPEC	NATIVE	DROUGHT	QTY
TREES + PALMS						
Rre	<i>Roystonea regia</i>	Florida Royal Palm	45'OA 18"GW 20"CAL	*	*	1
Bsi	<i>Bursera simaruba</i>	Gumbo Limbo	20' HT 8"-10" DBH	*	*	2
Cro	<i>Clusia rosea</i>	Autograph Tree	16-18' OA HT w/ character 4"-6" DBH	*	*	2
Paq	<i>Pachira aquatica</i>	Money Tree	30' OA 18" DBH	*	*	1
Spa	<i>Sabal palmetto</i>	Sabal Palm	24' - 26' CT DBL CURVE	*	*	4
Dca	<i>Dypsis cabadae</i>	Cabada Palm	10' HT CLUSTER	*	*	1
Dal	<i>Dyctiosperma album</i>	Princess Palm	8'-9' OA HT	*	*	8
Lvi	<i>Lignum vitae sanctum.</i>	Guaicum Tree	5' HT 2" DBH	*	*	1
Tra	<i>Thrinax radiata</i>	Thatch Palm	10'-14' OA	*	*	3
Tta	<i>Tabebuia caraiba</i>	Yellow Tabebuia Tree	14'-16' HT OA 6"-8" DBH	*	*	1
Tba	<i>Tabebuia bahamensis</i>	Bahama Tabebuia Tree	14'-16' HT OA 4"-6" DBH	*	*	3
Cdi	<i>Coccoloba diversifolia</i>	Pigeon Plum Tree	12' HT 3" DBH	*	*	15
Mce	<i>Myrica cerifera</i>	Wax Myrtle Tree	65G 12' OA Multi 2"-3" DBH	*	*	3
Cgr	<i>Caesalpinia granadillo</i>	Bridal's Veil Tree	12' OA 2"-3" DBH	*	*	3
Mfr	<i>Myrcianthes fragrans</i>	Simpson Stopper Tree	65G 8'-10' OA Multi 2"-3" DBH	*	*	10
Cuv1	<i>Coccoloba uvifera</i>	Sea Grape Tree	12' HT 2"-3" DBH Multi w/ Character	*	*	4
Cuv2	<i>Coccoloba uvifera</i>	Sea Grape Tree	16' HT 6"-8" DBH Multi w/ Character	*	*	2
Cer1	<i>Conocarpus erectus</i>	Silver Buttonwood Tree	18' OA 4"-6" DBH Multi w/ Character	*	*	8
Cer2	<i>Conocarpus erectus var. sericeus</i>	Green Buttonwood Tree	18' OA 4"-6" DBH Multi w/ Character	*	*	1
SHRUBS + ACENTS						
ZF	<i>Zamia floridana</i>	Coontie Palm	7G	*	*	12
PL	<i>Psychotria ligustrifolia</i>	Bahama Coffee	7G	*	*	35
MG	<i>Myrsine guianensis</i>	Myrsine	25G	*	*	9
SR	<i>Serenoa Repens</i>	Silver Saw Palmetto	25G @ 4' HT	*	*	15
TF	<i>Tripsacum floridiana</i>	Gamma Grass	7 GAL	*	*	28
PG	<i>Philodendron giganteum</i>	Giant Philodendron	25G 4HT	*	*	5
PP	<i>Portea petropolitana</i>	Portea Jungles	20" HT	*	*	3
AA	<i>Agave attenuata</i>	Spineless Agave	15G @ 2' HT	*	*	8
NG	<i>Neomarica gracilis</i>	Apostle's Iris	7 GAL	*	*	8
ZP	<i>Zamia pumila</i>	Coontie	3 GAL @ 24" OC	*	*	35
S	<i>Sanseveria trifasciata</i>	Black Coral	3 GAL @ 24" OC	*	*	5
AM	<i>Agave americana</i>	Super Blue	15G @ 3-4" HT	*	*	1
MF	<i>Myrcianthes fragrans</i>	Simpson Stopper	25G	*	*	43
FK	<i>Pennisetum fakahatchee</i>	Fakahatchee	3 GAL	*	*	22
CC	<i>Capparis cynophallophora</i>	Jamaican Caper	25G	*	*	19
CW	<i>Carapa guianensis</i>	Crabwood	25G	*	*	25
GROUNDCOVERS						
GC	<i>Ernodea littoralis</i>	Golden Creeper	1 GAL @ 18" OC	*	*	201
BR	<i>Barleria repens</i>	Purple Coral Creeper	1 GAL @ 12" OC	*	*	163
TF	<i>Tripsacum floridiana</i>	Gamma Grass	3 GAL @ 24" OC	*	*	28
BM	<i>Philodendron</i>	Burle Marx	3 GAL @ 24" OC	*	*	116
BG	<i>Bougainvillea</i>	Bougainvillea	7 GAL @ 24" OC	*	*	5
MD	<i>Monstera Deliciosa</i>	Swis Cheese Palm	3 GAL @ 24" OC	*	*	111
SF	<i>Nephrolepis exaltata</i>	Sword Fern	1 GAL @ 24" OC	*	*	126
BF	<i>Bulbines frutescens</i>	Bulbines	1 GAL @ 12" OC	*	*	15
HD	<i>Helianthus debilis</i>	Dune Sunflower	1 GAL @18" OC	*	*	85
PO	<i>Peperomia obtusifolia</i>	Peperomia	1 GAL @ 12" OC	*	*	160
PA	<i>Pilea glauca</i>	Aquamarine	1 GAL @ 18" OC	*	*	96
ZF	<i>Zamia pumila</i>	Coontie	3 GAL @ 24" OC	*	*	12
WF	<i>Microsorium scolopendrium</i>	Wart Fern	1 GAL @ 24" OC	*	*	116
NG	<i>Neomarica gracilis</i>	Apostle's Iris	3 GAL @ 24" OC	*	*	50
	Top Soil	50/50	5"-6" Deep	*	*	275 CY
	Mulch	Pine Straw	3" Deep. Roll Edges	*	*	137 CY
	Empire Zoysia	Empire Zoysia		*	*	1,174SF

LANDSCAPE LEGEND						
	Top Soil	50/50	5"-6" Deep	*	*	275 CY
	Mulch	Pine Straw	3" Deep. Roll Edges	*	*	137 CY
	Empire Zoysia	Empire Zoysia		*	*	1,174SF

LANDSCAPE LEGEND

Transect Zone: CD-1 **Lot Area: 47,312.00 Acres: 1.086** **REQUIRED/ALLOWED** **PROVIDED**

TREES

A. Number of trees required per net lot acre, less existing number of trees

meeting minimum requirements = $22 \text{ trees} \times 1.086 \text{ net lot acres} - \text{number of existing trees (6)} =$ **18** **56**

B. % Natives required: Number of trees provided x 30% =

$56 \times .30 = 8 \text{ Native Trees required}$ **17** **48**

C. % Drought tolerant and low maintenance:

Number of trees provided x 50% = $56 \times .5 = 13 \text{ Drought \& Low Maintenance Trees required}$ **28** **56**

D. Street Trees (maximum average spacing of 20' o.c.):

$\frac{\text{linear feet along street}}{20} =$
 $237 / 20 = 12 \text{ Street Trees required. LF. ROW Green Space}$ **12** **12**

E. Street trees located directly beneath power lines: (maximum average spacing of 20' o.c.):

$\frac{\text{linear feet along street}}{20} =$ **N/A** **N/A**

SHRUBS

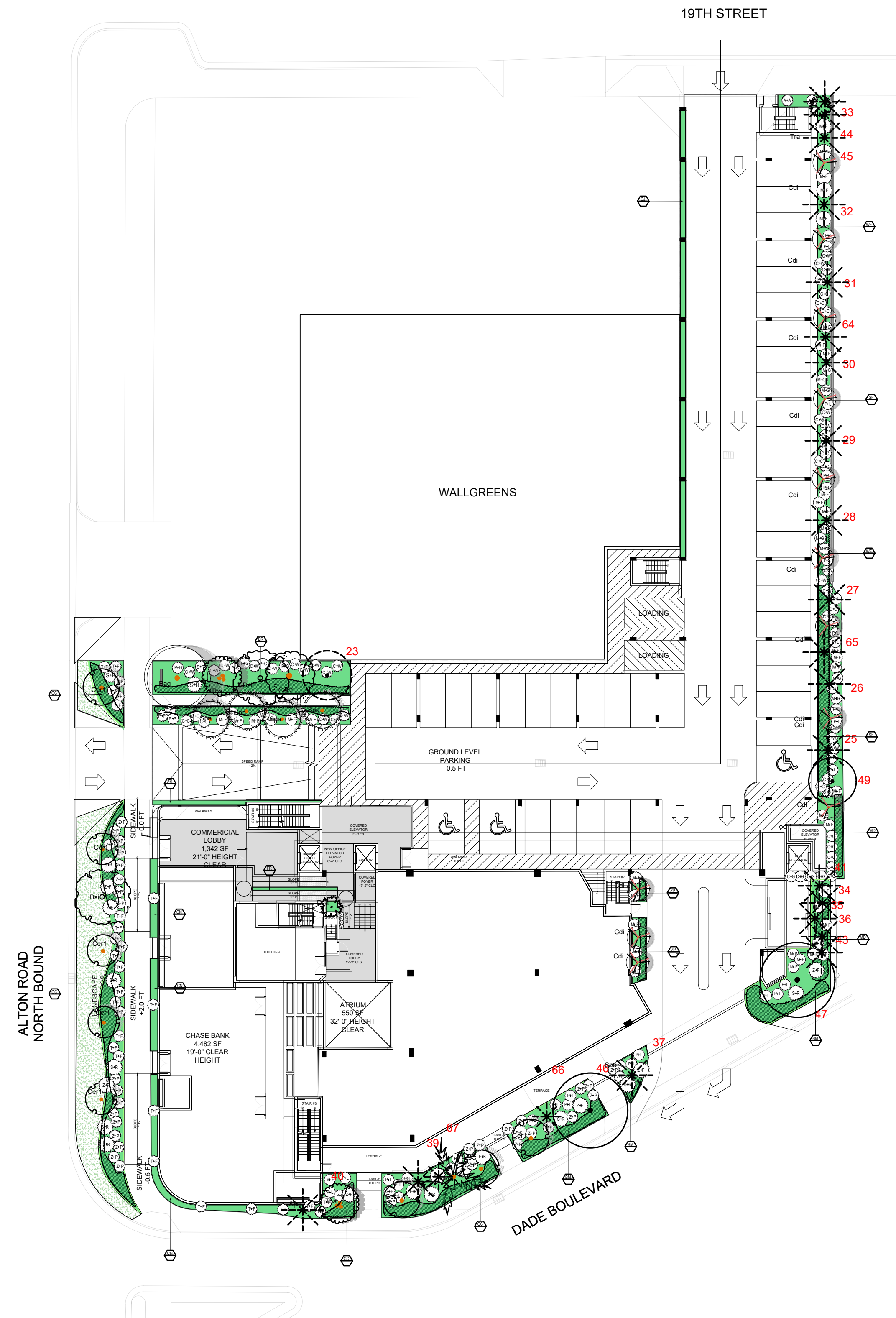
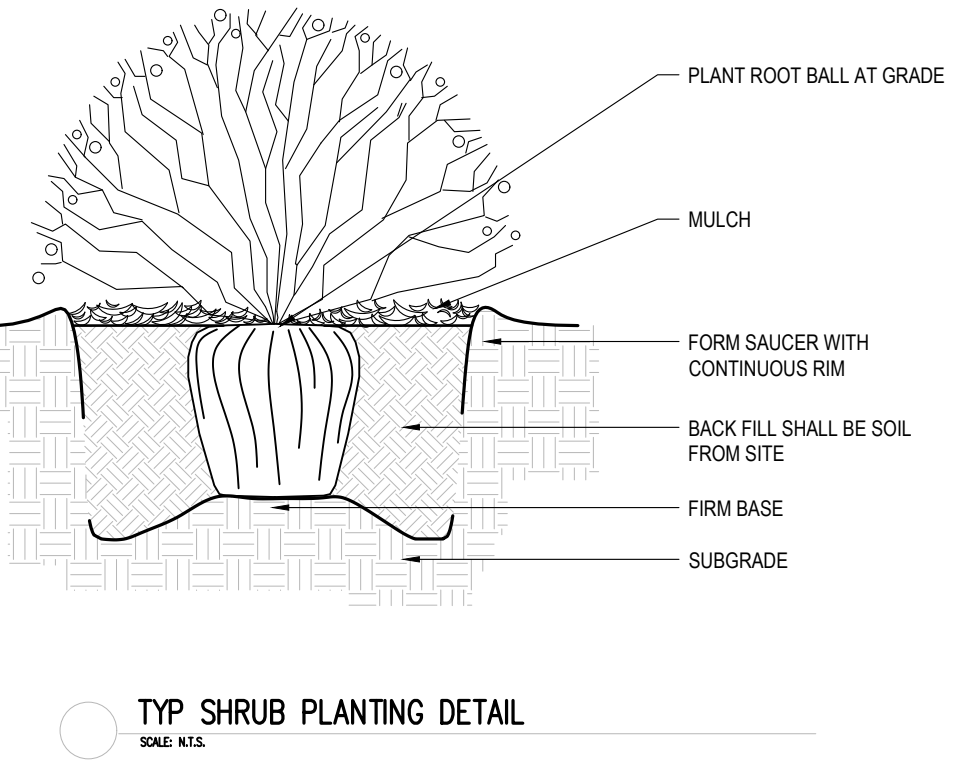
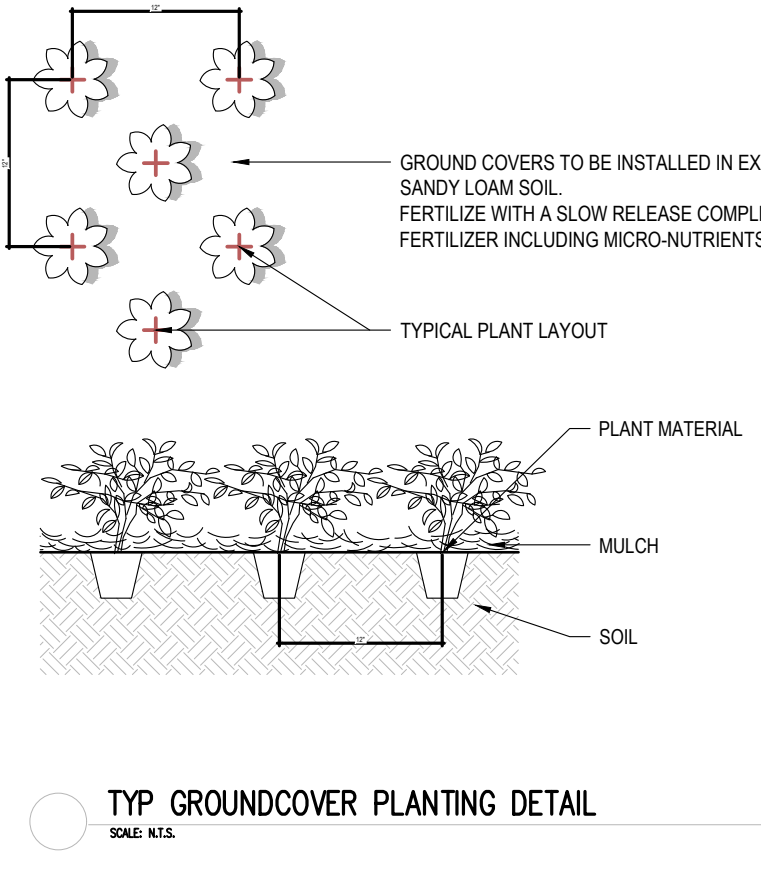
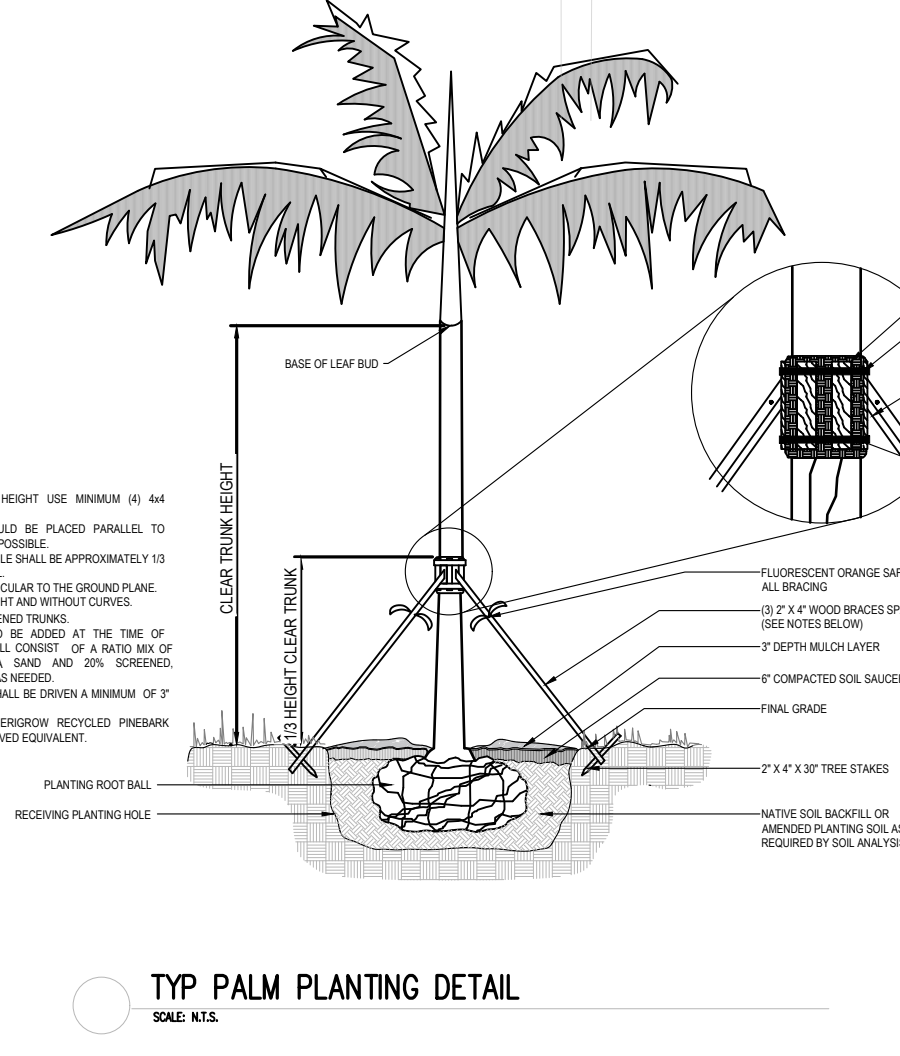
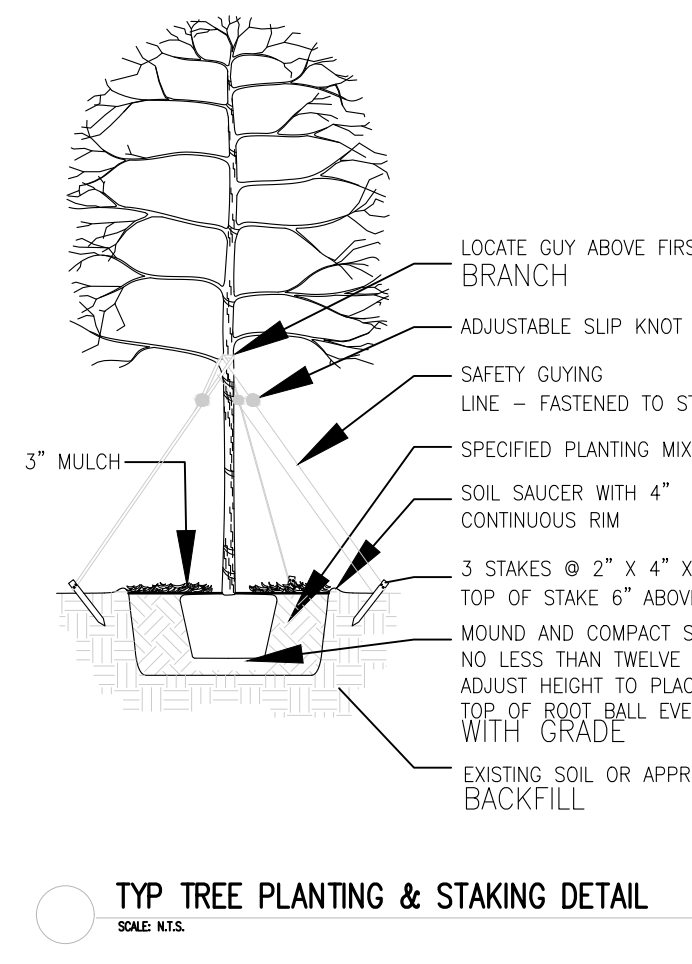
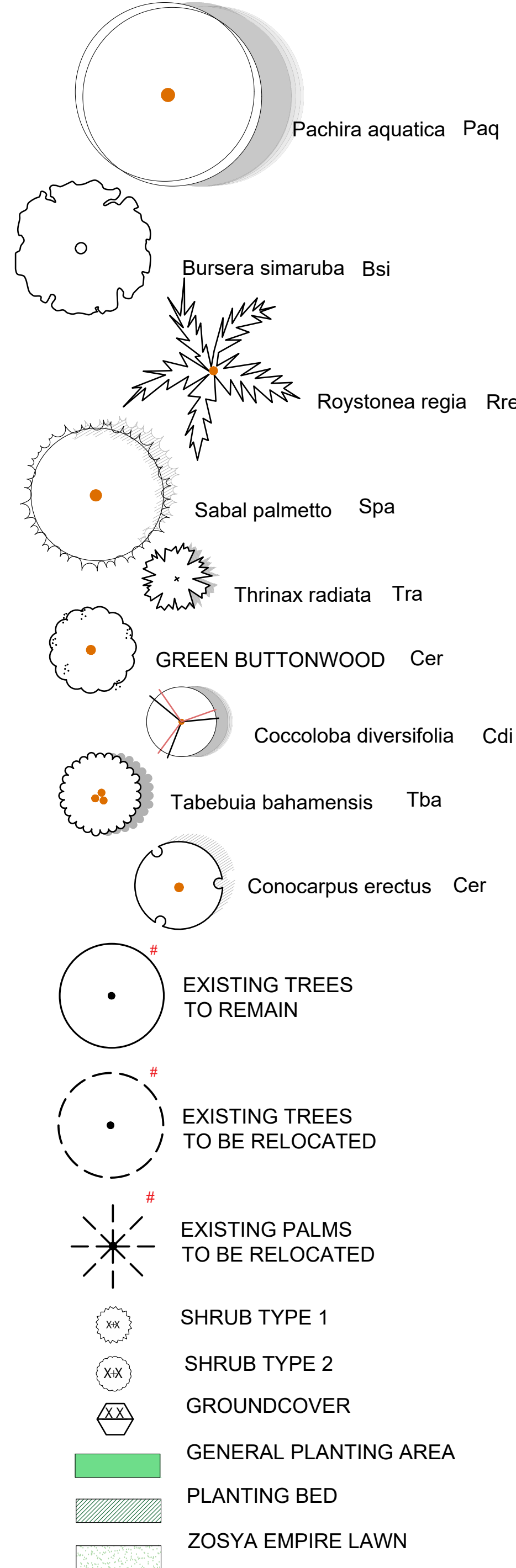
A. Number of shrubs required: Number of trees required x 12 =

$18 \times 12 = 288 \text{ Shrubs required}$ **216** **276**

B. % Native shrubs required: Number of shrubs provided x 30% =

$276 \times .30 = \text{Native shrubs required}$ **83** **276**

PLANT SYMBOLS



OVERALL GROUND FLOOR LANDSCAPE PLAN
 Scale: 1/32" = 1'-0"

LANDSCAPE ARCHITECT
 FL RLA LIC #6667191
 900 BISCAYNE BLVD
 MIAMI, FL 33132
VINCENT A. FILIGENZI
 LA #6667191

NOTE:
 These architectural drawings and plans are the exclusive copyright of the architect, VAFD INC. These drawings and plans shall not be reproduced or used in any project without the express written permission.

1801 ALTON RD
Landscape Design
 1801 Alton Rd., Miami Beach, FL 33141

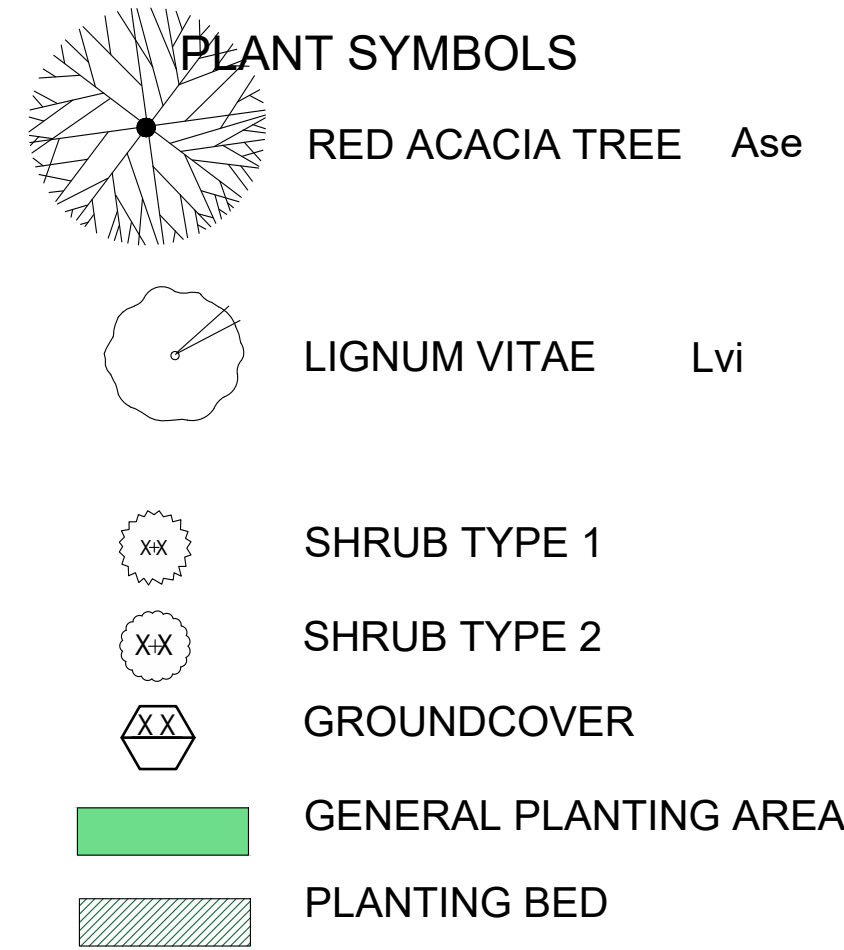
#1 2.26.21 DB8 LANDSCAPE

SHEET ISSUE:	REV #	DATE	DESCRIPTION

PROJECT #:
 DRAWN BY: AJ
 CHECKED BY: VF
 DATE: 3.8.2021

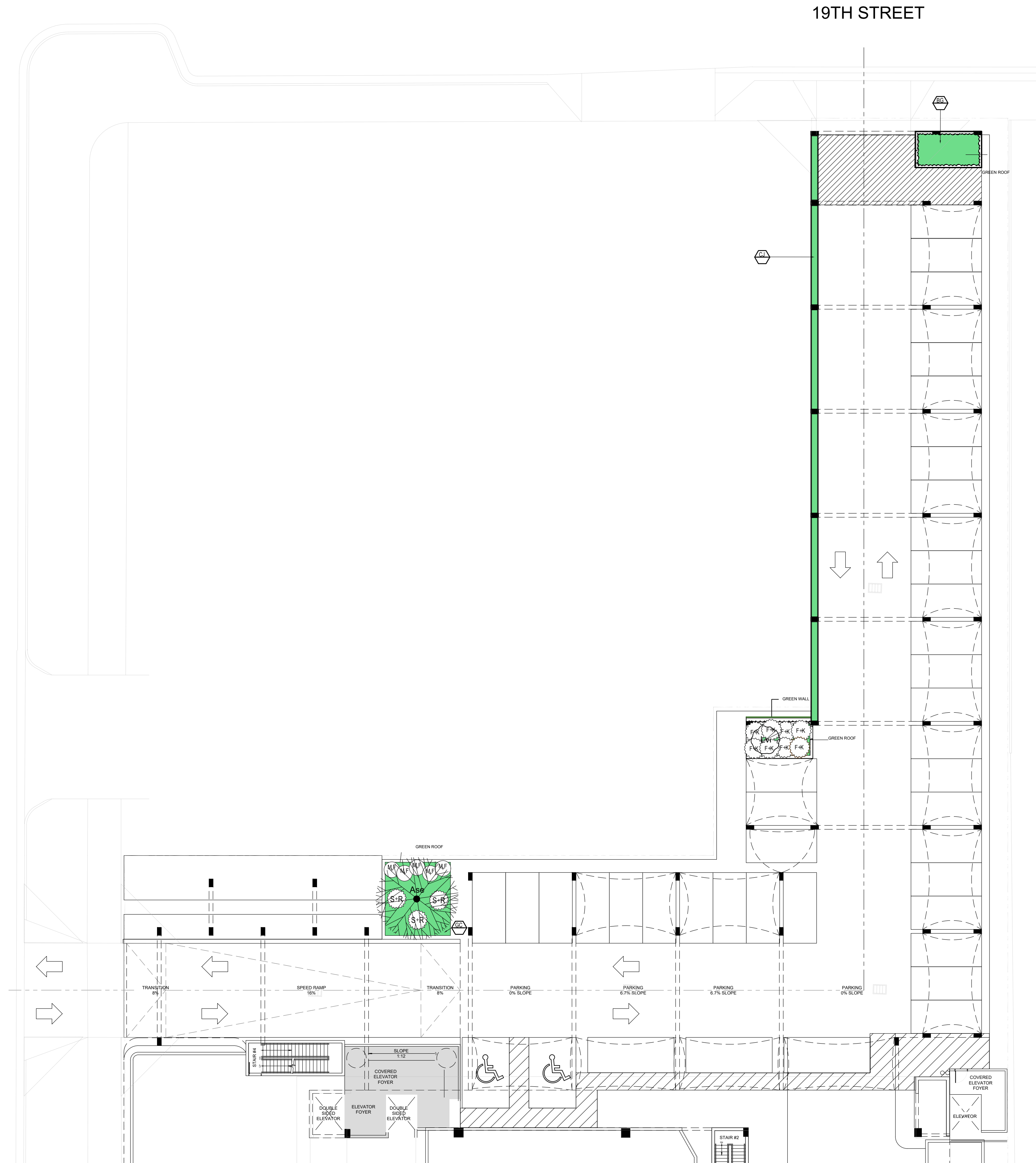
DISCIPLINE / SHEET TITLE:
PROPOSED GROUND FLOOR PLANTING PLAN

SHEET NUMBER:
LP-1.0



PROPOSED PLANT LIST						
SYM	BOTANICAL NAME	COMMON NAME	SPEC	NATIVE	DROUGHT	QTY
TREES + PALMS						
Lvi	<i>Lignum vitae sanctum</i>	Guaiacum Tree	5' HT 2" DBH	*	*	1
	<i>Acacia seyal</i>	Red acacia Tree	12' ht x 2"DBH SPECIMEN	*	*	
SHRUBS + ACENTS						
SR	<i>Serenoa Repens</i>	Silver Saw Palmetto	25G @ 4' HT	*	*	3
MF	<i>Myrcianthes fragrans</i>	Simpson Stopper	25G	*	*	2
FK	<i>Pennisetum fakahatchee</i>	Fakahatchee	3 GAL	*	*	8
GROUNDCOVERS						
GC	<i>Ernodea littoralis</i>	Golden Creeper	1 GAL @ 18" OC	*	*	33
BG	<i>Bougainvillea</i>	Bougainvillea	7 GAL @ 24" OC			2
	Top Soil	50/50	5"-6" Deep	*		15.09 CY
	Mulch	Pine Straw	3" Deep. Roll Edges			7.55 CY

MULTILEVEL GREEN ROOF COVERAGE	
1.5 LEVEL	
EXISTING ROOF (SF)	12,128 SF
NEW ROOF (SF)	5,151 SF
TOTAL ROOF (SF)	17,279 SF
REQUIRED 50% (SF)	8,640 SF
PROVIDED	687 SF
2ND LEVEL	
EXISTING ROOF (SF)	12,128 SF
NEW ROOF (SF)	5,151 SF
TOTAL ROOF (SF)	17,279 SF
REQUIRED 50% (SF)	8,640 SF
PROVIDED	330 SF
3RD LEVEL	
EXISTING ROOF (SF)	12,128 SF
NEW ROOF (SF)	5,151 SF
TOTAL ROOF (SF)	17,279 SF
REQUIRED 50% (SF)	8,640 SF
PROVIDED	4,720 SF
4TH LEVEL	
EXISTING ROOF (SF)	12,128 SF
NEW ROOF (SF)	5,151 SF
TOTAL ROOF (SF)	17,279 SF
REQUIRED 50% (SF)	8,640 SF
PROVIDED	2,912 SF
TOTAL	8,649 SF



1.5 LEVEL LANDSCAPE PLAN
Scale: 1/16" = 1'-0"

LANDSCAPE ARCHITECT
FL R.L.A.LIC #6667191
600 BISCAYNE BLVD
MIAMI, FL 33132
PROJECT: 1801 ALTON RD

SEAL:

VINCENT A. FILIGENZI
LA #6667191

NOTE:
These architectural drawings and plans are the exclusive copyright of the architect, VAFD INC. These drawings and plans shall not be used, copied, or reproduced by any individual or entity or any other project without the express written permission.

1801 ALTON RD
Landscape Design
1801 Alton Rd., Miami Beach, FL 33141

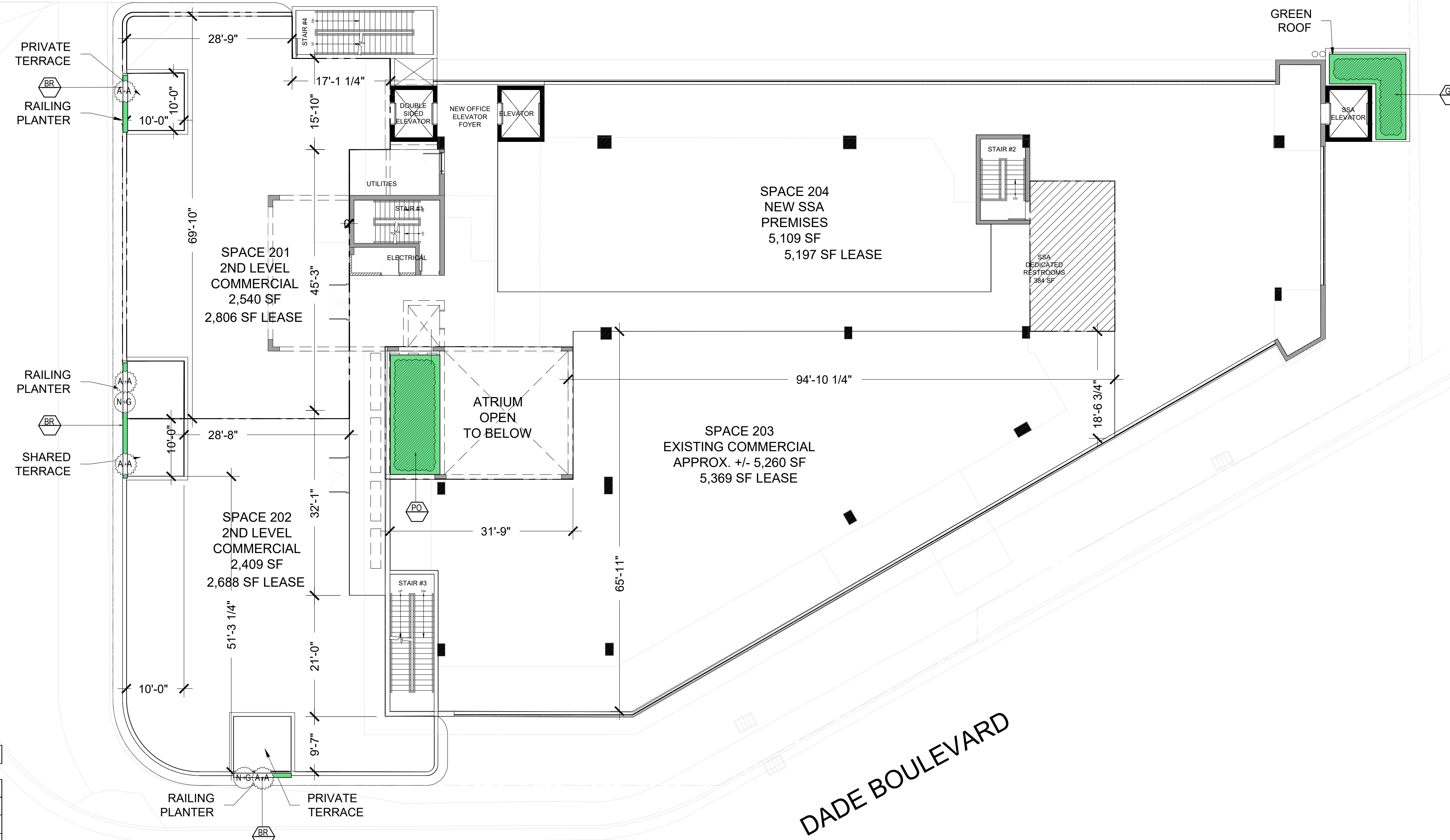
SHEET ISSUE:	DATE	DESCRIPTION
#1	2.26.21	DRS LANDSCAPE

PROJECT #:
DRAWN BY: AJ
CHECKED BY: VF
DATE: 2.15.2021

DISCIPLINE / SHEET TITLE:
LEVEL 1.5 LANDSCAPE PLAN

SHEET NUMBER:
LP-2.0

ALTON ROAD
NORTH BOUND



DADE BOULEVARD

2ND LEVEL LANDSCAPE PLAN
Scale: 3/32" = 1'-0"

MULTILEVEL GREEN ROOF COVERAGE

1.5 LEVEL	
EXISTING ROOF (SF)	12,128 SF
NEW ROOF (SF)	5,151 SF
TOTAL ROOF (SF)	17,279 SF
REQUIRED 50% (SF)	8,640 SF
PROVIDED	687 SF
2ND LEVEL	
EXISTING ROOF (SF)	12,128 SF
NEW ROOF (SF)	5,151 SF
TOTAL ROOF (SF)	17,279 SF
REQUIRED 50% (SF)	8,640 SF
PROVIDED	330 SF
3RD LEVEL	
EXISTING ROOF (SF)	12,128 SF
NEW ROOF (SF)	5,151 SF
TOTAL ROOF (SF)	17,279 SF
REQUIRED 50% (SF)	8,640 SF
PROVIDED	4,720 SF
4TH LEVEL	
EXISTING ROOF (SF)	12,128 SF
NEW ROOF (SF)	5,151 SF
TOTAL ROOF (SF)	17,279 SF
REQUIRED 50% (SF)	8,640 SF
PROVIDED	2,912 SF
TOTAL	8,649 SF

PLANT SYMBOLS

- SHRUB TYPE 1
- SHRUB TYPE 2
- GROUNDCOVER
- GENERAL PLANTING AREA
- PLANTING BED

PROPOSED PLANT LIST

SYM	BOTANICAL NAME	COMMON NAME	SPEC	NATIVE	DROUGHT	QTY
SHRUBS + ACENTS						
AA	<i>Agave attenuata</i>	Spineless Agave	15G @ 2' HT		*	8
NG	<i>Neomarica gracilis</i>	Apostle's Iris	7 GAL			8
GROUNDCOVERS						
GC	<i>Ernodea littoralis</i>	Golden Creeper	1 GAL @ 18" OC	*	*	30
BR	<i>Barleria repens</i>	Purple Coral Creeper	1 GAL @ 12" OC	*	*	27
PO	<i>Peperomia obtusifolia</i>	Peperomia	1 GAL @ 12" OC			34
	Top Soil	50/50.	5"-6" Deep	*		3.34 CY
	Mulch	Pine Straw	3" Deep. Roll Edges			6.69 CY

LANDSCAPE ARCHITECT
FL R.L.A.L.C. #6667191
600 BISCAYNE BLVD
MIAMI, FL 33132
PROJECT: 1801 ALTON RD

VINCENT A. FILIGENZI
LA #6667191

NOTE:
These architectural drawings and plans are the exclusive copyright of the architect, VFD INC. These drawings and plans shall not be used, copied, or reproduced by any individual or entity, or any other project without the express written permission.

1801 ALTON RD
Landscape Design
1801 Alton Rd., Miami Beach, FL 33141

SHEET ISSUE:
REV # DATE DESCRIPTION
#1 2.26.21 DR LANDSCAPE

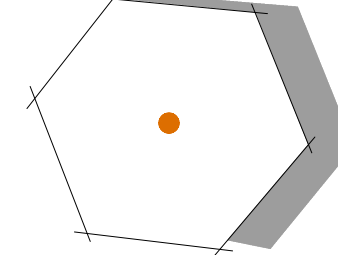
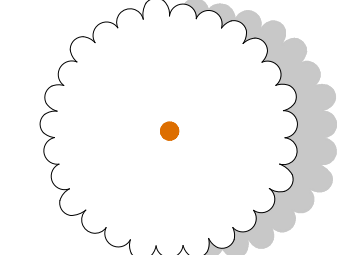
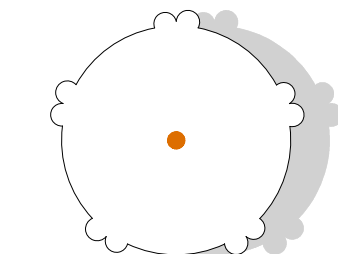
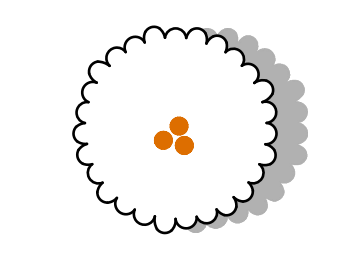
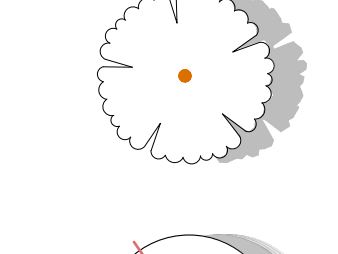
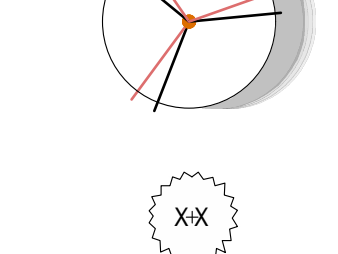





PROJECT #:
DRAWN BY: AJ
CHECKED BY: VF
DATE: 3.8.2021

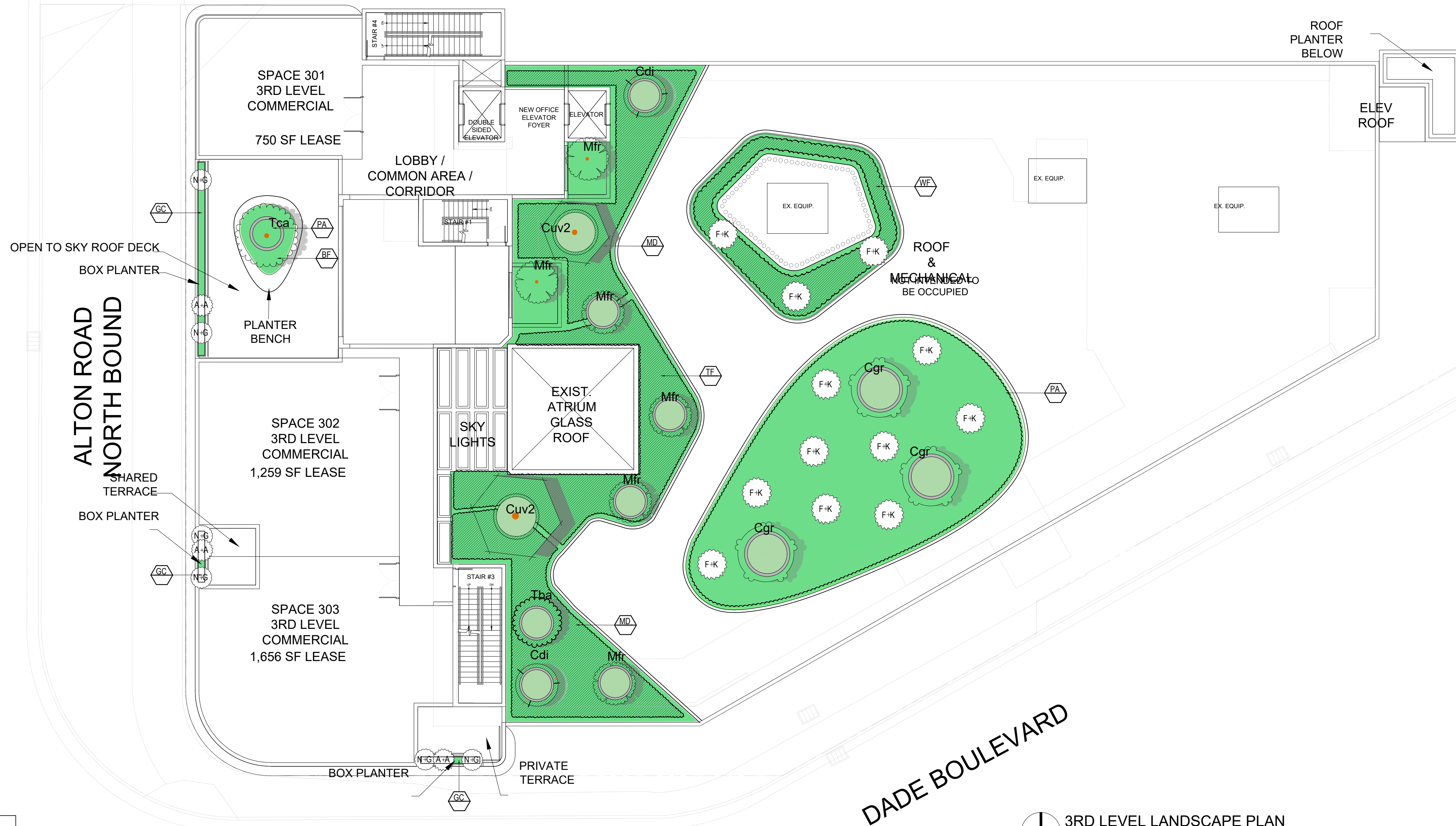
DISCIPLINE / SHEET TITLE:
LEVEL 2
LANDSCAPE
PLAN

SHEET NUMBER:

LP-3.0

PLANT SYMBOLS

-  Coccoloba uvifera Cuv2
-  Yellow tabebuia Tca
-  Caesalpinia granadillo Cgr
-  Tabebuia bahamensis Tba
-  Myrcianthes fragrans Mfr
-  Coccoloba diversifolia Cdi
-  SHRUB TYPE 1
-  SHRUB TYPE 2
-  GROUNDCOVER
-  GENERAL PLANTING AREA
-  PLANTING BED



3RD LEVEL LANDSCAPE PLAN
Scale: 3/32" = 1'-0"

MULTILEVEL GREEN ROOF COVERAGE

1.5 LEVEL	
EXISTING ROOF (SF)	12,128 SF
NEW ROOF (SF)	5,151 SF
TOTAL ROOF (SF)	17,279 SF
REQUIRED 50% (SF)	8,640 SF
PROVIDED	687 SF
2ND LEVEL	
EXISTING ROOF (SF)	12,128 SF
NEW ROOF (SF)	5,151 SF
TOTAL ROOF (SF)	17,279 SF
REQUIRED 50% (SF)	8,640 SF
PROVIDED	330 SF
3RD LEVEL	
EXISTING ROOF (SF)	12,128 SF
NEW ROOF (SF)	5,151 SF
TOTAL ROOF (SF)	17,279 SF
REQUIRED 50% (SF)	8,640 SF
PROVIDED	4,720 SF
4TH LEVEL	
EXISTING ROOF (SF)	12,128 SF
NEW ROOF (SF)	5,151 SF
TOTAL ROOF (SF)	17,279 SF
REQUIRED 50% (SF)	8,640 SF
PROVIDED	2,912 SF
TOTAL	8,649 SF

PROPOSED PLANT LIST						
SYM	BOTANICAL NAME	COMMON NAME	SPEC	NATIVE	DROUGHT	QTY
TREES + PALMS						
Tta	<i>Tabebuia caraiba</i>	Yellow Tabebuia Tree	14'-16' HT OA 6"-8" DBH			1
Tba	<i>Tabebuia bahamensis</i>	Bahama Tabebuia Tree	14'-16' HT OA 4"-6" DBH			3
Cdi	<i>Coccoloba diversifolia</i>	Pigeon Plum Tree	12' HT 3" DBH	*	*	15
Cgr	<i>Caesalpinia granadillo</i>	Bridal's Veil Tree	12' OA 2"-3" DBH		*	3
Mfr	<i>Myrcianthes fragrans</i>	Simpson Stopper Tree	65G 8'-10' OA Multi 2"-3" DBH	*		10
Cuv2	<i>Coccoloba uvifera</i>	Sea Grape Tree	16' HT 6"-8" DBH Multi w/ Character	*	*	2
SHRUBS + ACENTS						
AA	<i>Agave attenuata</i>	Spineless Agave	15G @ 2' HT			8
NG	<i>Neomarica gracilis</i>	Apostle's Iris	7 GAL			8
FK	<i>Pennisetum fakahatchee</i>	Fakahatchee	3 GAL	*	*	22
GROUNDCOVERS						
GC	<i>Ernodea littoralis</i>	Golden Creeper	1 GAL @ 18" OC	*	*	26
TF	<i>Tripsacum floridiana</i>	Gamma Grass	3 GAL @ 24" OC	*	*	12
MD	<i>Monstera Deliciosa</i>	Swis Cheese Palm	3 GAL @ 24" OC		*	57
BF	<i>Bulbines frutescens</i>	Bulbines	1 GAL @ 12" OC			15
PA	<i>Pilea glauca</i>	Aquamarine	1 GAL @ 18" OC			80
WF	<i>Microsorium scolopendrium</i>	Wart Fern	1 GAL @ 24" OC			42
	Top Soil	50/50.	5"-6" Deep	*		82.46 CY
	Mulch	Pine Straw	3" Deep. Roll Edges			41.23 CY

LANDSCAPE ARCHITECT
FL R.L.A.I.C. #6667191
600 BISCAYNE BLVD
MIAMI, FL 33132
PROJECT: 1801 ALTON RD.

VINCENT A. FILIGENZI
LA #6667191

NOTE:
These architectural drawings and plans are the exclusive copyright of the architect, VFD INC. These drawings and plans shall not be used, copied, or reproduced by any individual or entity or any other project without the express written permission.

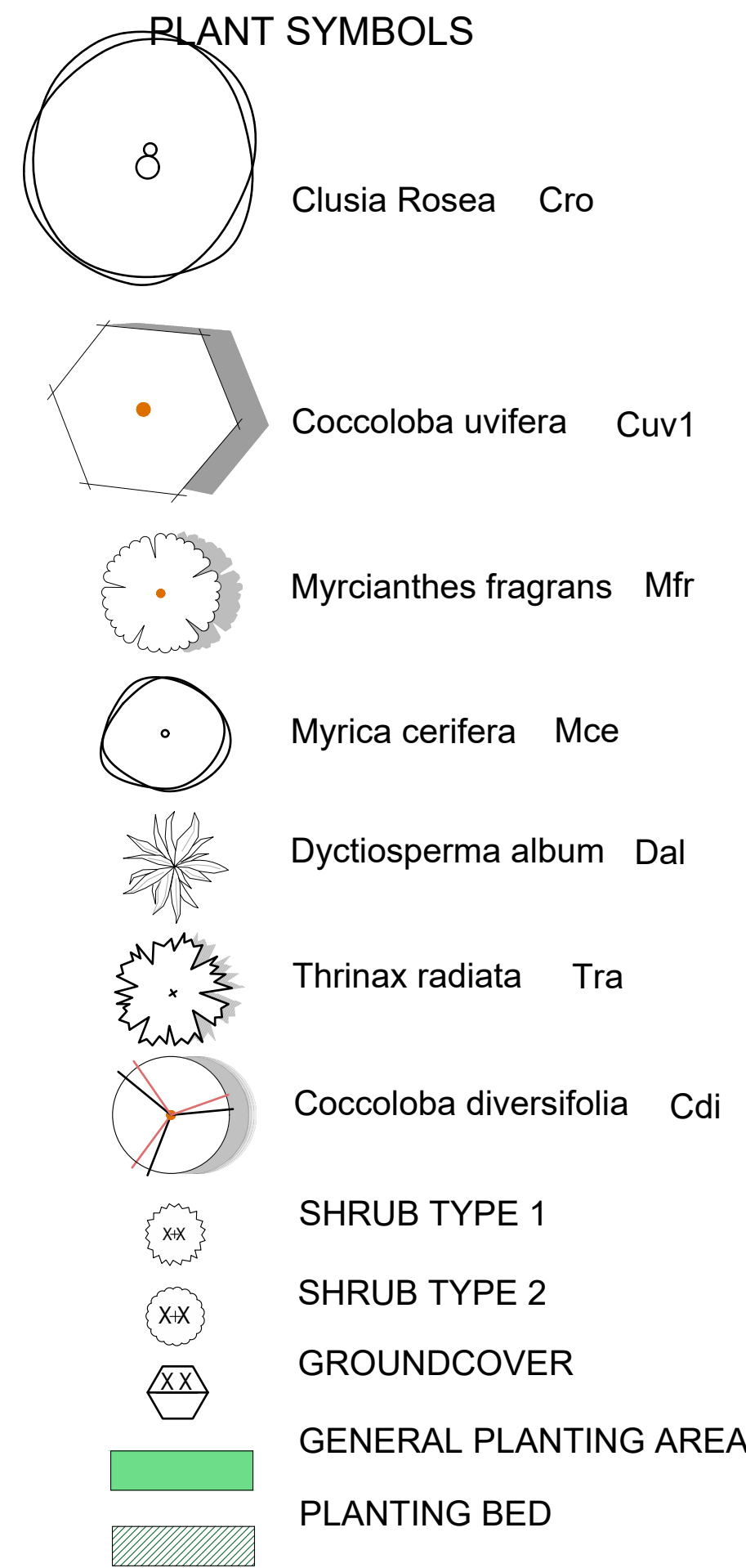
1801 ALTON RD
Landscape Design
1801 Alton Rd., Miami Beach, FL 33141

SHEET ISSUE	REV #	DATE	DESCRIPTION
	#1	2-26-21	DR/LANDSCAPE

PROJECT #:
DRAWN BY: AJ
CHECKED BY: VF
DATE: 3.8.2021

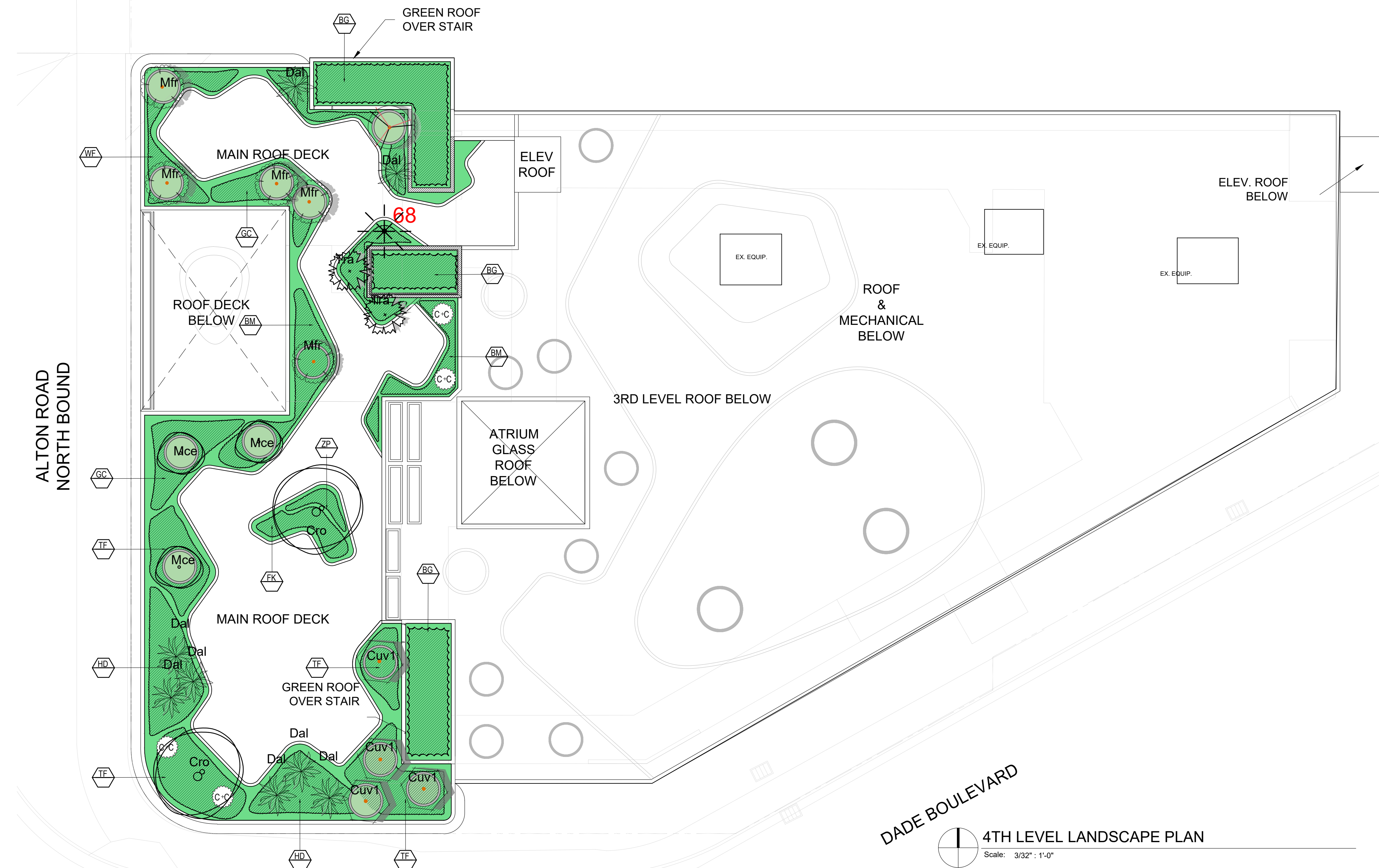
DISCIPLINE / SHEET TITLE:
**LEVEL 3
LANDSCAPE
PLAN**

SHEET NUMBER:
LP-4.0



MULTILEVEL GREEN ROOF COVERAGE

1.5 LEVEL	
EXISTING ROOF (SF)	12,128 SF
NEW ROOF (SF)	5,151 SF
TOTAL ROOF (SF)	17,279 SF
REQUIRED 50% (SF)	8,640 SF
PROVIDED	687 SF
2ND LEVEL	
EXISTING ROOF (SF)	12,128 SF
NEW ROOF (SF)	5,151 SF
TOTAL ROOF (SF)	17,279 SF
REQUIRED 50% (SF)	8,640 SF
PROVIDED	330 SF
3RD LEVEL	
EXISTING ROOF (SF)	12,128 SF
NEW ROOF (SF)	5,151 SF
TOTAL ROOF (SF)	17,279 SF
REQUIRED 50% (SF)	8,640 SF
PROVIDED	4,720 SF
4TH LEVEL	
EXISTING ROOF (SF)	12,128 SF
NEW ROOF (SF)	5,151 SF
TOTAL ROOF (SF)	17,279 SF
REQUIRED 50% (SF)	8,640 SF
PROVIDED	2,912 SF
TOTAL	8,649 SF MORE THAN 50%



PROPOSED PLANT LIST

SYM	BOTANICAL NAME	COMMON NAME	SPEC	NATIVE	DROUGHT	QTY
TREES + PALMS						
Cro	<i>Clusia rosea</i>	Autograph Tree	16-18' OA HT w/ character 4"-6" DBH	*		2
Dal	<i>Dyctiosperma album</i>	Princess Palm	8'-9' OA HT			8
Tra	<i>Thrinax radiata</i>	Thatch Palm	10'-14' OA	*	*	3
Cdi	<i>Coccoloba diversifolia</i>	Pigeon Plum Tree	12' HT 3" DBH	*	*	1
Mce	<i>Myrica cerifera</i>	Wax Myrtle Tree	65G 8'-10' OA Multi 2"-3" DBH	*	*	3
Mfr	<i>Myrcianthes fragrans</i>	Simpson Stopper Tree	65G 8'-10' OA Multi 2"-3" DBH	*	*	5
Cuv1	<i>Coccoloba uvifera</i>	Sea Grape Tree	12' HT 2"-3" DBH Multi w/ Character	*	*	4
SHRUBS + ACENTS						
CC	<i>Capparis cynophallophora</i>	Jamaican Caper	25G	*	*	4
GROUNDCOVERS						
GC	<i>Ernodea littoralis</i>	Golden Creeper	1 GAL @ 18" OC	*	*	21
TF	<i>Tripsacum floridiana</i>	Gamma Grass	3 GAL @ 24" OC	*	*	16
BM	<i>Philodendron</i>	Burle Marx	3 GAL @ 24" OC	*	*	52
BG	<i>Bougainvillea</i>	Bougainvillea	7 GAL @ 36" OC			3
ZP	<i>Zamia pumila</i>	Coontie	3 GAL @ 24" OC	*	*	35
HD	<i>Helianthus debilis</i>	Dune Sunflower	1 GAL @ 18" OC			85
WF	<i>Microsorium scolopendrium</i>	Wart Fern	1 GAL @ 24" OC			74
	Top Soil	50/50.	5"-6" Deep	*		25.56 CY
	Mulch	Pine Straw	3" Deep. Roll Edges			51.11 CY

GREEN ROOF: 50% OF THE MULTI-LEVEL ROOF SHALL ACCOMMODATE A GREEN ROOF. PENDING STRUCTURAL EVALUATION OF EXISTING BUILDING TO ACCOMMODATE LARGER TREES DUE TO TREE MITIGATION OR MINIMUM NUMBER OF CANOPY TREES. SEE ROOF AREA CALCULATION SHOWING COMPLIANCE IN TABLE ON THIS SHEET..

LANDSCAPE ARCHITECT
FL R.L.A.LIC #6667191
600 BISCAYNE BLVD
MIAMI, FL 33132
VINCENT A. FILIGENZI
LA #6667191

NOTE:
These architectural drawings and plans are the exclusive copyright of the architect, VFD INC. These drawings and plans shall not be used, copied, or reproduced by any individual or entity or any other project without the express written permission.

1801 ALTON RD
Landscape Design
1801 Alton Rd., Miami Beach, FL 33141

SHEET ISSUE	DATE	DESCRIPTION
#1	2/26/21	DR/LANDSCAPE

PROJECT #:
DRAWN BY: AJ
CHECKED BY: VF
DATE: 3.8.2021
DISCIPLINE / SHEET TITLE:
**LEVEL 4
LANDSCAPE
PLAN**

SHEET NUMBER:
LP-5.0



GUMBO LIMBO



PACHIRA AQUATICA



BAHAMA TABEBUIA



SABAL PALM



SIMPSON STOPPER



ROYAL PALM



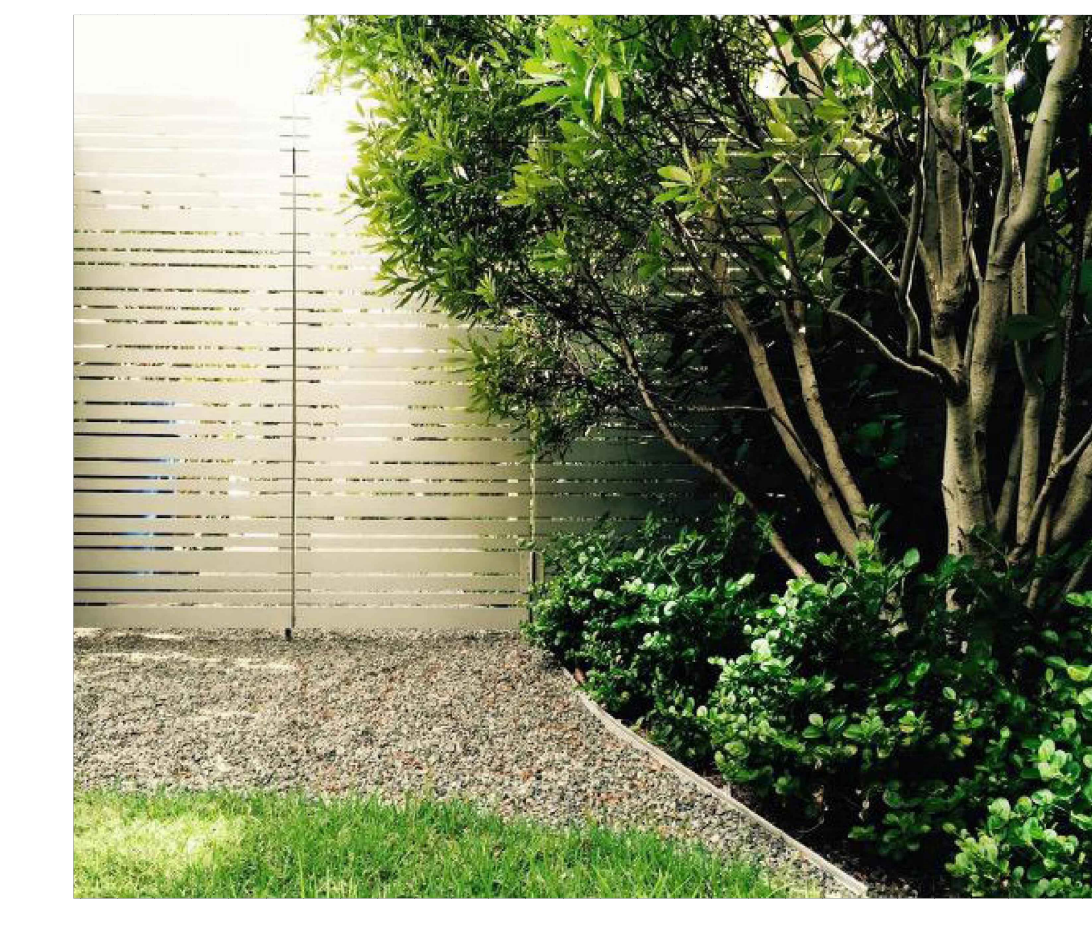
SILVER SAW PALMETTO



GREEN THATCH PALM



MYRSINE GUIANENSIS



WAX MYRTLE



SILVER BUTTONWOOD



CLUSIA GUTTIFERA



PORTEA JUNGLES



COONTIE



PHILODENDRON GIGANTEUM

LANDSCAPE ARCHITECT
FL RLA LIC #6667191
900 BISCAYNE BLVD
MIAMI, FL 33132
786-367-2600
PR:GARET@vafdesign.com



NOTE:
These architectural drawings and others
are the exclusive copyright of the
architect, VAF, INC. These drawings and
plans shall not be reproduced for use by
any other party without the express written
permission.

1801 ALTON RD
Landscape Design
1801 Alton Rd., Miami Beach, FL 33141

SHEET ISSUE:		
REV #	DATE	DESCRIPTION
#1	2.26.21	DR-LANDSCAPE

PROJECT #:
DRAWN BY: AJ
CHECKED BY: VF
DATE: 3.8.2021

DISCIPLINE / SHEET TITLE:
REFERENCE
PLANT
IMAGES

SHEET NUMBER:
LP-6.0