

# MIAMI BEACH RE-ENTRY PLAN

2021

# COORDINATION MEETINGS

## **Multiple Departments**

- Police
- Fire
- Transportation
- Marketing and Communications
- Parking
- Finance

# RESEARCH

## **Comparison Communities**

- Coastal
- Similar geography
- Comparable population (size / demographics)
- Roads and bridges

# RESEARCH

## **Comparison Communities**

- Manatee County, FL
- Coastal Bend, TX
- Nueces County, TX
- Longboat Key, FL
- Key West, FL

# IMPORTANT ELEMENTS TO CONSIDER

- **Messaging** is the most important element
- Messaging about evacuation and re-entry included in comprehensive emergency communications plan
- Universal understanding of the plan
  - Internal training
  - Public Messaging

# MESSAGING



# MB ALERT

Register online at [www.miamibeachfl.gov](http://www.miamibeachfl.gov)

**Stay up to date on  
emergency and important information**

# PROCESS

- Policy Group/City Manager implements
- MBPD initiates re-entry traffic plan
- Entry points
- **Diverting entry traffic** on the mainland side

# OPTION 1 – LICENSE PLATE READER

- City residents will register with the City in the same way that they register for reduced parking rates. As residents re-enter, they will be directed to a resident only lane where the license plates will be read. If confirmed as a resident, the vehicle will be allowed to continue; if not, the vehicle will be directed to a turn-around lane.



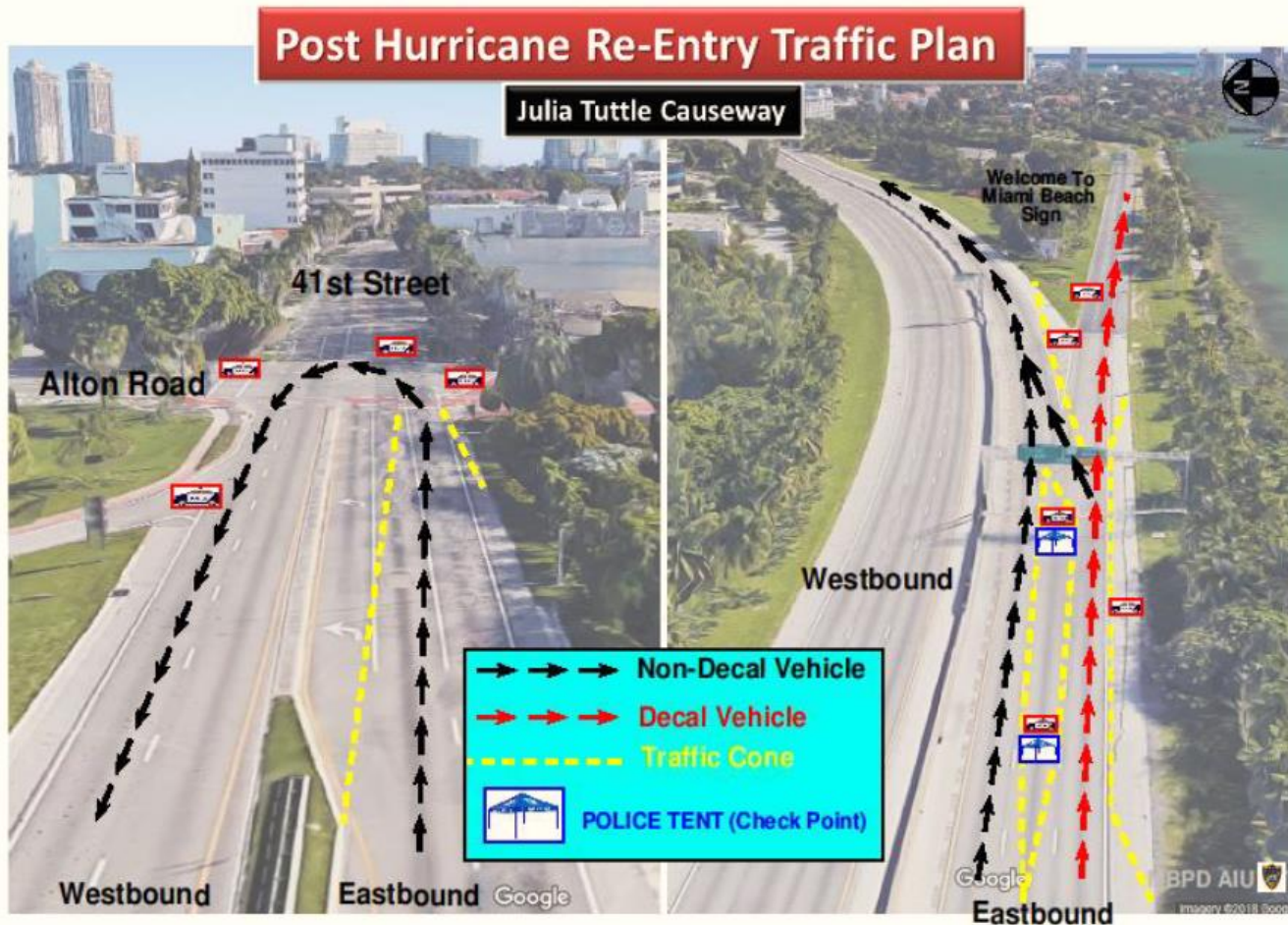
# OPTION 2 - DECALS

## RESIDENTS with Decals

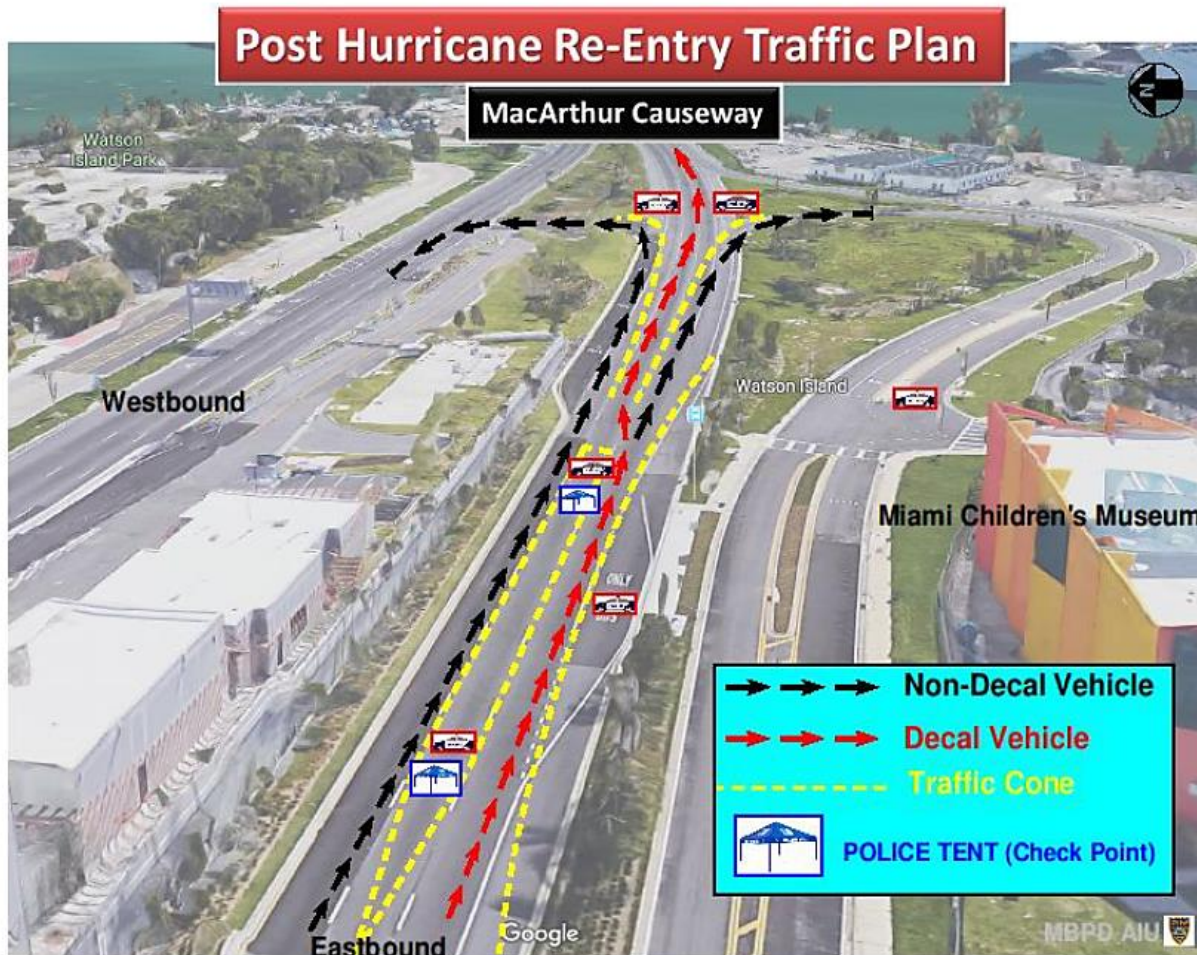
### PROPER ID FOR RESIDENTS INCLUDE

- Current Driver's License
- Passport
- Voter Registration
- Utility bill
- Mortgage deed or Lease agreement
- Property Tax documents
- Car registration

# SAMPLE - JULIA TUTTLE CAUSEWAY

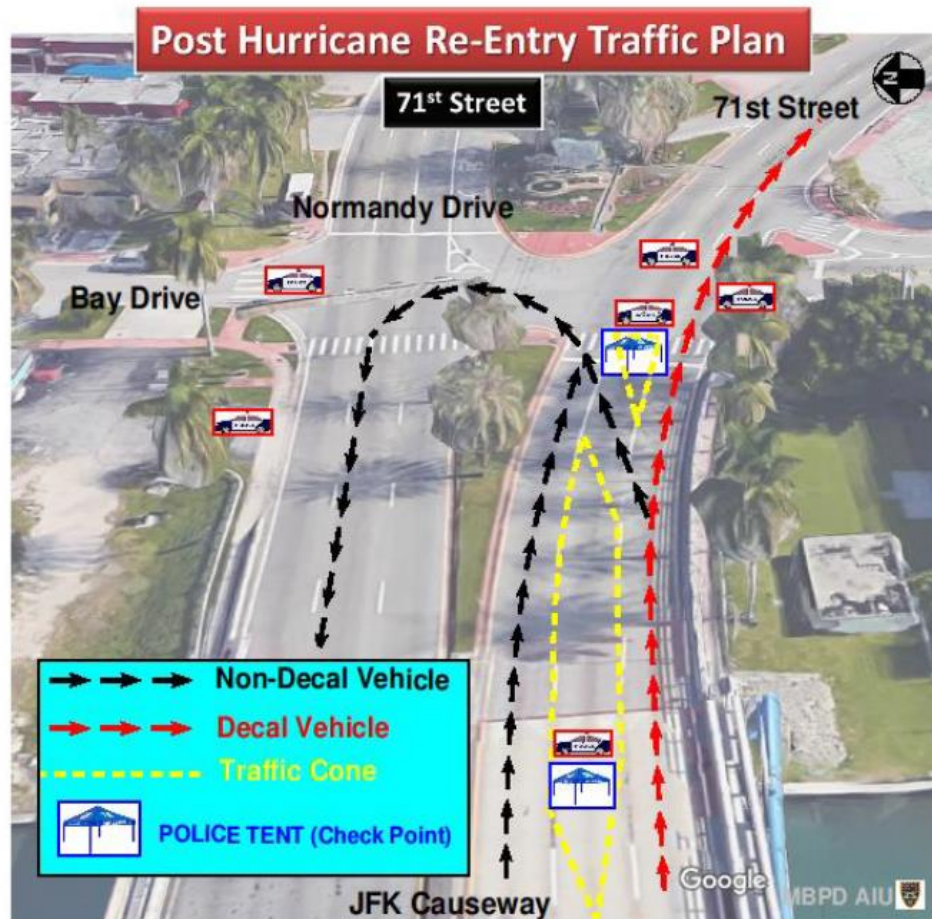


# SAMPLE - MacARTHUR CAUSEWAY



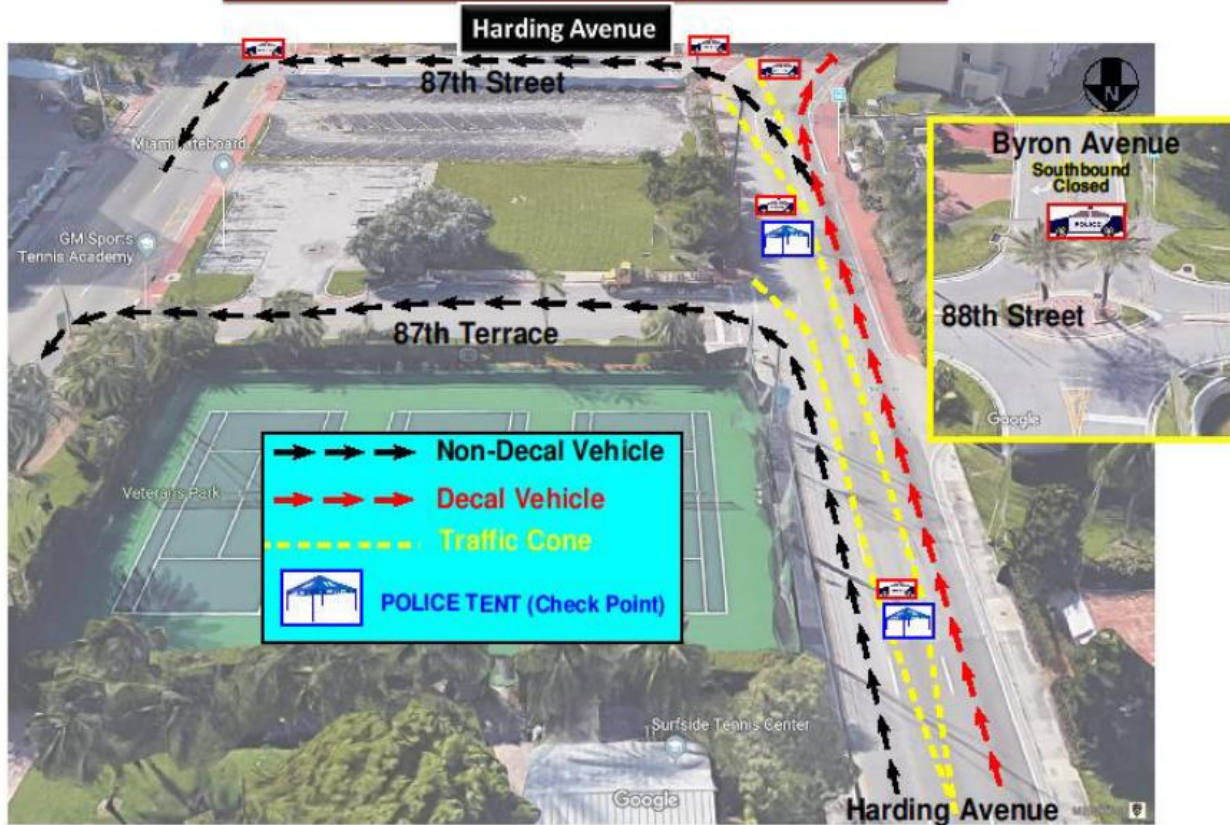


# SAMPLE- 71<sup>st</sup> Street



# SAMPLE – HARDING AVENUE

## Post Hurricane Re-Entry Traffic Plan



# RE-ENTRY PLAN

- The City **no longer issues** re-entry hang tags
- Situation differs each time
- “All Open” or “Restricted Access”
- **Diverting entry traffic** on the mainland side
- Announcements will be made for re-entry  
Message must be consistent

# RECOMMENDATION

- A mobile LPR system mounted on a vehicle with 5-year warranty would cost \$45,000 plus the cost of the vehicle.

This is the recommended option as it provides for system mobility.

- A mobile LPR system mounted on a vehicle with 5-year warranty would cost \$45,000 plus the cost of the vehicle. This is the recommended option as it provides for system mobility. Additionally, the City may go years without needing the system and these vehicles can be used to enhance Parking's LPR functions.

# ALTERNATE DECAL SYSTEM

- If LPRs are not available for use, the cost of decals or hangtags can range from \$5,000 to \$20,000 for 45,000 decals/tags.
- We do not recommend decals or hangtags as the potential for abuse is great and vehicles will still need to be stopped to check credentials.



QUESTIONS?

# Phased Approach

## Re-Entry Standard Operating Procedure for a Phased Approach

Level 1 – (Life Safety /Landfall Teams)

Level 2 – Infrastructure

Level 3 – Residents and Businesses

Level 4 – General Public