

EXHIBIT "E"

ITEM	SCIENTIFIC NAME	COMMON NAME	HEIGHT +/- (FT)	SPREAD (FT)	DBH (IN)	DISPOSITION	NOTES
1	PHOENIX DACTYLIFERA 'MEDJOL'	MEDJOL DATE PALM	30			REMAIN	
2	PHOENIX DACTYLIFERA 'MEDJOL'	MEDJOL DATE PALM	30			REMAIN	
3	SABAL PALMETTO	SABAL PALM	16			REMAIN	
4	SABAL PALMETTO	SABAL PALM	16			REMAIN	
5	SABAL PALMETTO	SABAL PALM	16			REMAIN	
6	SABAL PALMETTO	SABAL PALM	16			REMAIN	
7	SABAL PALMETTO	SABAL PALM	16			REMAIN	
8	COCOS NUCIFERA	COCONUT PALM	25			REMAIN	
9	COCOS NUCIFERA	COCONUT PALM	25			REMAIN	
10	COCOS NUCIFERA	COCONUT PALM	25			REMAIN	
11	COCOS NUCIFERA	COCONUT PALM	25			REMAIN	
12	COCOS NUCIFERA	COCONUT PALM	25			REMAIN	
13	COCOS NUCIFERA	COCONUT PALM	25			REMAIN	
14	CONOCARPUS ERECTUS 'SERICEUS'	SILVER BUTTWOOD	22	18		REMAIN	
15	CONOCARPUS ERECTUS 'SERICEUS'	SILVER BUTTWOOD	20	18		REMAIN	
16	CONOCARPUS ERECTUS 'SERICEUS'	SILVER BUTTWOOD	20	18		REMOVE	POOR CONDITION
17	PANDANUS UTILIS	SCREW PINE	18	12		REMAIN	
18	COCOS NUCIFERA	COCONUT PALM	25			REMAIN	
19	COCOS NUCIFERA	COCONUT PALM	25			REMAIN	
20	COCOS NUCIFERA	COCONUT PALM	25			REMAIN	
21	COCOS NUCIFERA	COCONUT PALM	22			REMAIN	
22	COCOS NUCIFERA	COCONUT PALM	30			REMAIN	
23	COCOS NUCIFERA	COCONUT PALM	22			REMAIN	
24	COCOS NUCIFERA	COCONUT PALM	25			REMAIN	
25	COCOS NUCIFERA	COCONUT PALM	25			REMAIN	

PUBLIC RIGHT-OF-WAY TREE DISPOSITION LIST

BASED ON TREE SURVEY CONDUCTED BY THE LANDSCAPE ARCHITECT IDENTIFICATION OF ALL TREES SHOULD BE CONFIRMED BY THE DIVISION OF FORESTRY OR CERTIFIED ARBORIST

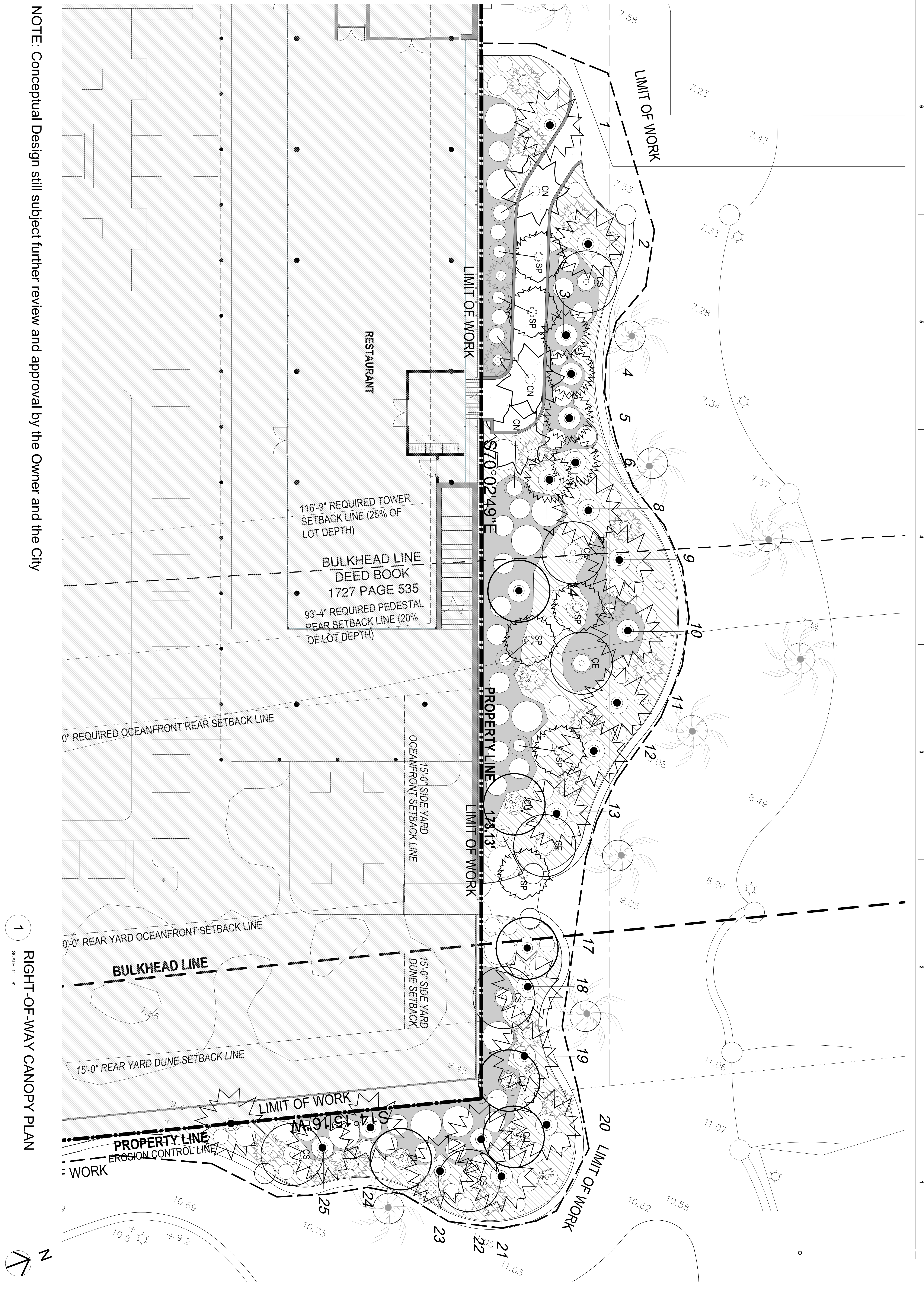


LEGEND

- EXISTING PALM TO REMAIN
- EXISTING TREE TO REMOVE
- EXISTING PALM TO RELOCATE

NOTE: Conceptual Design still subject further review and approval by the Owner and the City

1 RIGHT OF WAY TREE DISPOSITION PLAN
SCALE: 1" = 16'



NOTE: Conceptual Design still subject further review and approval by the Owner and the City

1 RIGHT-OF-WAY CANOPY PLAN
SCALE: 1" = 8'

**BVLGARI HOTEL
MIAMI BEACH**

100 21st STREET
MIAMI BEACH, FL 33139

**CITTERIO-VIEL
& PARTNERS**
DESIGN ARCHITECT

revuelta-architecture.com

revuelta
architecture
international

Miami
Semiolo, Ohio

6880 SW 27TH AVE
MIAMI, FL 33155
TEL: 305.580.0500
F: 305.580.0502

Owner Information
BHJ Miami Limited Corp.
1521 Allen Rd
Suite 403
Miami Beach, FL 33139
(786) 785-6504

Landscape Architect
THRESHOLD
811 E Las Olas Blvd
Suite 9
Fort Lauderdale, FL 33301
(954) 361-4721

Stephen Michael Callahan
LA6687206

HPB SUBMITTAL

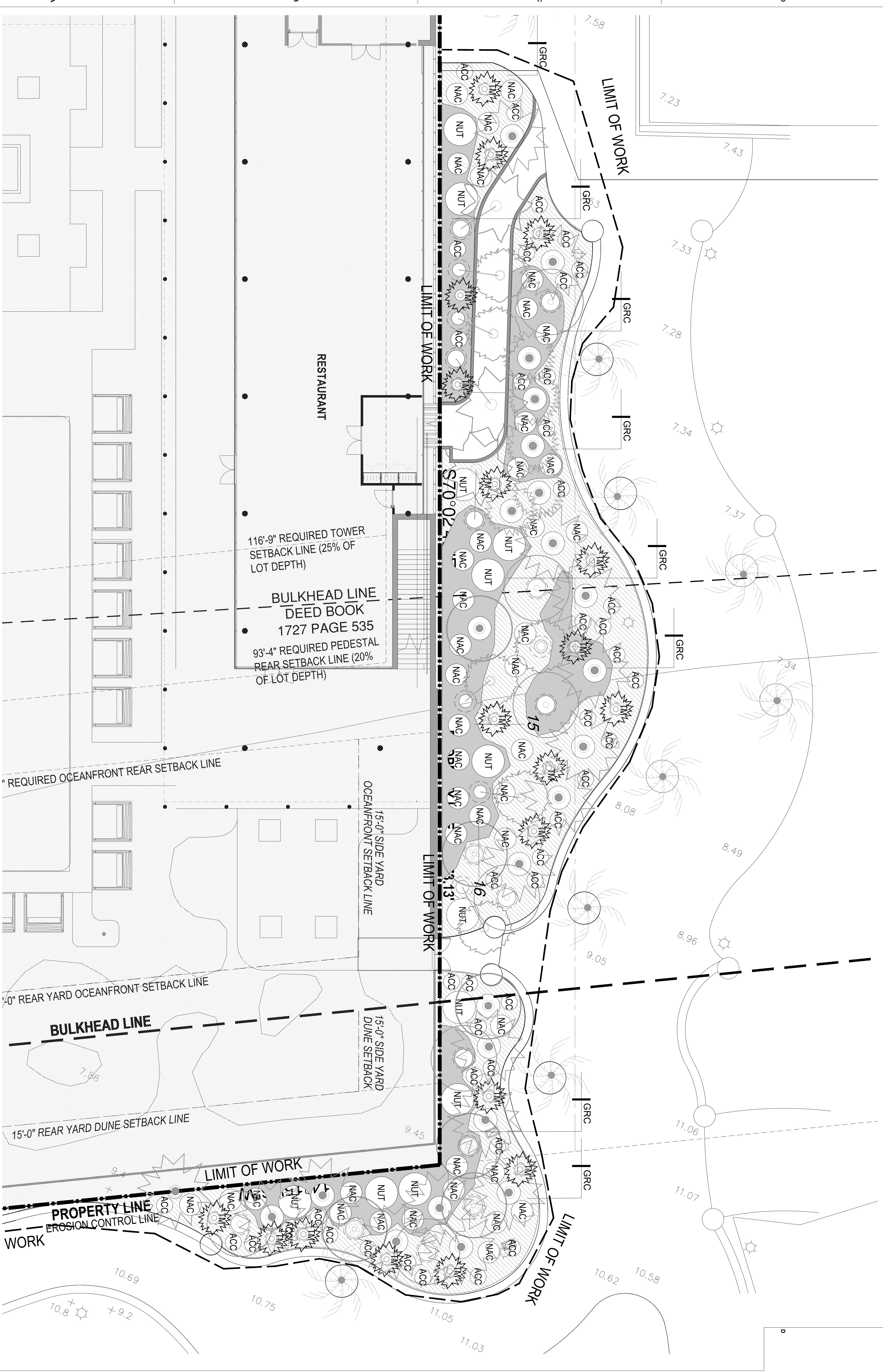
Date: 02/08/2021

Scale: AS SHOWN

Project No: 2005

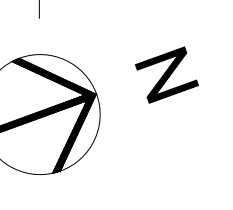
Sheet Name: RIGHT-OF-WAY CANOPY PLAN

Sheet No: L-310



NOTE: Conceptual Design still subject further review and approval by the Owner and the City

1 RIGHT-OF-WAY UNDERSTORY PLAN
SCALE: 1" = 8'



revuelta
architecture
international

Miami
Santiago, Chile

revuelta-architecture.com

6880 SW 27TH AVE
MIAMI, FL 33155
TEL: 305.580.0500
F: 305.580.0500

DESIGN ARCHITECT

**CITTERIO-VIEL
& PARTNERS**

Project

**BVLGARI HOTEL
MIAMI BEACH**

100 21st STREET
MIAMI BEACH, FL 33139

Revisions

Owner Information
BHJ Miami Limited Corp.

1521 Alton Rd
Suite 403
Miami Beach, FL 33139
(786) 785-6504

Landscape Architect
THRESHOLD

811 E Las Olas Blvd
Suite 9
Fort Lauderdale, FL 33301
(954) 361-4721

Stephen Michael Callahan
LA6687206

HPB SUBMITTAL

Date
02/08/2021

Scale
AS SHOWN

Project No.
2005

Sheet Name
RIGHT-OF-WAY UNDERSTORY PLAN

Sheet No.
L-311

RIGHT-OF-WAY PLANT LIST

- * Denotes Florida Native Species
- Plants installed pursuant to this Code shall conform to, or exceed, the minimum standards for Florida Number One as provided in the most current edition of "Grades and Standards for Nursery Plants, Part I and II," prepared by the State of Florida Department of Agriculture and Consumer Services.
- Plant quantities are provided for convenience. When discrepancies arise between the planting plans and plant list occur the planting plan shall take precedence.
- Contractor shall coordinate on-site planting layout visits with the Landscape Architect two (2) weeks prior to installation.
- See Landscape Specifications and Notes Sec. 4 for Contractor Sample Photograph Submittal Requirements

QUANTITY	SYMBOL	BOTANICAL NAME	COMMON NAME	SIZE
PALMS				
2	CN-1	*COCOS NUCIFERA 'GREEN MALAYAN'	COCONUT PALM	FIELD GROWN, 16-18" CLEAR-TRUNK, HEAVY TRUNK, CHARACTER NO STRAIGHT TRUNKS
1	CN-2	*COCOS NUCIFERA 'GREEN MALAYAN'	COCONUT PALM	FIELD GROWN, 10-12" CLEAR-TRUNK, HEAVY TRUNK, CHARACTER NO STRAIGHT TRUNKS
2	SP-1	*SABAL PALMETTO	FLORIDA SABAL PALM	30-36" CLEAR-TRUNK, HEAVY SLICK TRUNK, CHARACTER NO STRAIGHT TRUNKS
2	SP-2	*SABAL PALMETTO	FLORIDA SABAL PALM	24-28" CLEAR-TRUNK, HEAVY SLICK TRUNK, CHARACTER NO STRAIGHT TRUNKS
2	SP-3	*SABAL PALMETTO	FLORIDA SABAL PALM	16-18" CLEAR TRUNK, HEAVY BOOTED TRUNK, STRAIGHT TRUNK
UNDERSTORY PALMS				
8	TM-1	*THRINAX MORRISII	KEY THATCH PALM	FIELD GROWN, 4-5' PLANTED HT. MIN., SINGLE TRUNK
11	TM-2	*THRINAX MORRISII	KEY THATCH PALM	FIELD GROWN, 4-5' PLANTED HT. MIN., MULTI-TRUNK DOUBLE
TREES				
4	CU	*COCCOLOBA UVIFERA	SEAGRAPE	FIELD GROWN, 14-16" PLANTED HT. X 6" SP. MIN., MULTI-TRUNK BUSH FORM, FULL TO BASE
3	CE	*CONOCARPUS ERECTUS 'GREEN'	GREEN BUTTWOOD	FIELD GROWN, 14-16" HT. X 7-8" SP. PLANTED, MULTI-TRUNK, BUSH FORM
4	CS	*CONOCARPUS ERECTUS 'SERICEUS'	SILVER BUTTWOOD	FIELD GROWN, 14-16" HT. X 7-8" SP. PLANTED, MULTI-TRUNK, BUSH FORM
NATIVE UNDERSTORY TREE / LARGE SHRUBS				
5	NUT	*CAPPARIS CYNOPHALLOPHORA	JAMAICAN CAPER	25 GALLON, 5-6" HT. X 4-5" SP. PLANTED, BUSH FORM, FULL TO BASE
3	NUT	*CLUSIA GUTTIFERA	SMALL LEAF CLUSIA	25 GALLON, 7-8" HT. X 4-5" SP. PLANTED, BUSH FORM, FULL TO BASE
4	NUT	*MYCIANTHES FRAGRANS	SIMPSON'S STOPPER	25 GALLON, 6" HT. X 4" SP. PLANTED, BUSH FORM, DENSE, FULL TO BASE
SHRUBS				
20	NAC	*CHRYSOBALANUS ICAGO 'HORIZONTAL'	HORIZONTAL COCOPLUM	7 GALLON, 24" PLANTED HT. MIN., FULL TO BASE, 30" OC.
10	NAC	*CROTON DISCOLOR	LECHELULO	3 GALLON, 24" PLANTED HT. MIN., FULL TO BASE
12	NAC	*SAVIA BAHAMENSIS	MAIDEN BUSH	15 GALLON, 4-5" PLANTED HT. MIN., BUSH FORM, FULL TO BASE
ACCENTS				
12	ACC	AGAVE TEQUILANA	BLUE AGAVE	25 GALLON, 4' PLANTED HT. MIN., HEAVY, SPECIMEN
17	ACC	*SERENOA REPENS 'CINEREA'	SILVER SAW PALMETTO	7 GALLON, 24" PLANTED HT. MIN., FULL TO BASE
16	ACC	*YUCCA ALIOFOLIA	ALOE YUCCA	7 GALLON, 4' PLANTED HT. MIN., FULL TO BASE, LA TO LOCATE ON-SITE
GROUND COVER				
TBD	GRC	CARISSA MACROCARPA 'EMERALD BLANKET'	NATAL PLUM	3 GALLON, 6" HT. X 12" SP. MIN., FULL SPREADING, 18" OC.
TBD	GRC	*ERINODEA LITTORALIS	GOLDEN BEACH CREEPER	1 GALLON, 8" PLANTED HT. MIN., FULL TO BASE, 18" OC.
FLOWERING GROUND COVER				
30	FGC	*HYMENOCALLIS LATIFOLIA	MANGROVE SPIDER LILY	3 GALLON, 12" HT. MIN., FULL CLUMP, LA LOCATE ON-SITE
18	FGC	*IPOMOEA PES-CAPRAE	RAILROAD VINE	1 GALLON, FULL AND FLOWERING, LA LOCATE ON-SITE
ORNAMENTAL GRASS				
24	OGR	*SPARTINA BAKERI	SAND COARDGRASS	3 GALLON, 30" PLANTED HT. MIN., FULL TO BASE, 36" OC., LA LOCATE ON-SITE
MISCELLANEOUS				
TBD		RECYCLED MULCH		RECYCLED MULCH, NO CYPRESS OR DYER, QTY. CALCULATED BY CONTRACTOR

NOTE: Conceptual Design still subject further review and approval by the Owner and the City