

BETTER BUS NETWORK

Miami Beach

Better
Bus
Network



MIAMI-DADE
COUNTY

PROJECT OVERVIEW

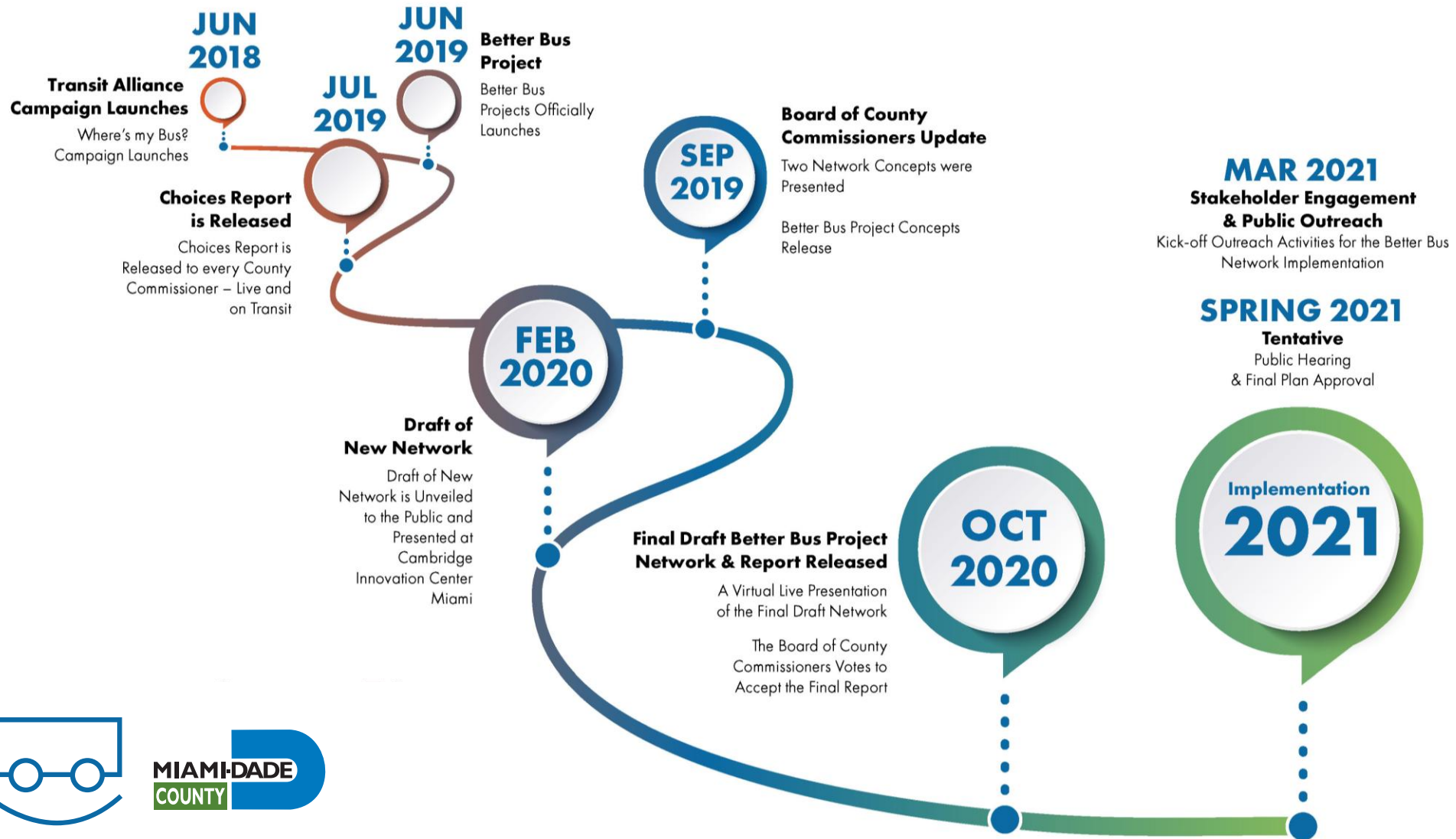
Initiated May 2019

Miami-Dade County in partnership with Transit Alliance Miami

Complete Network Redesign Including:

- More frequent service all day
- 1/4 Mile bus stop spacing
- Less deviations
- Route consolidation/simplification
- Elimination of under-performing routes
- More equitable service

HOW DID WE GET HERE?



Better
Bus
Network



MIAMI-DADE
COUNTY

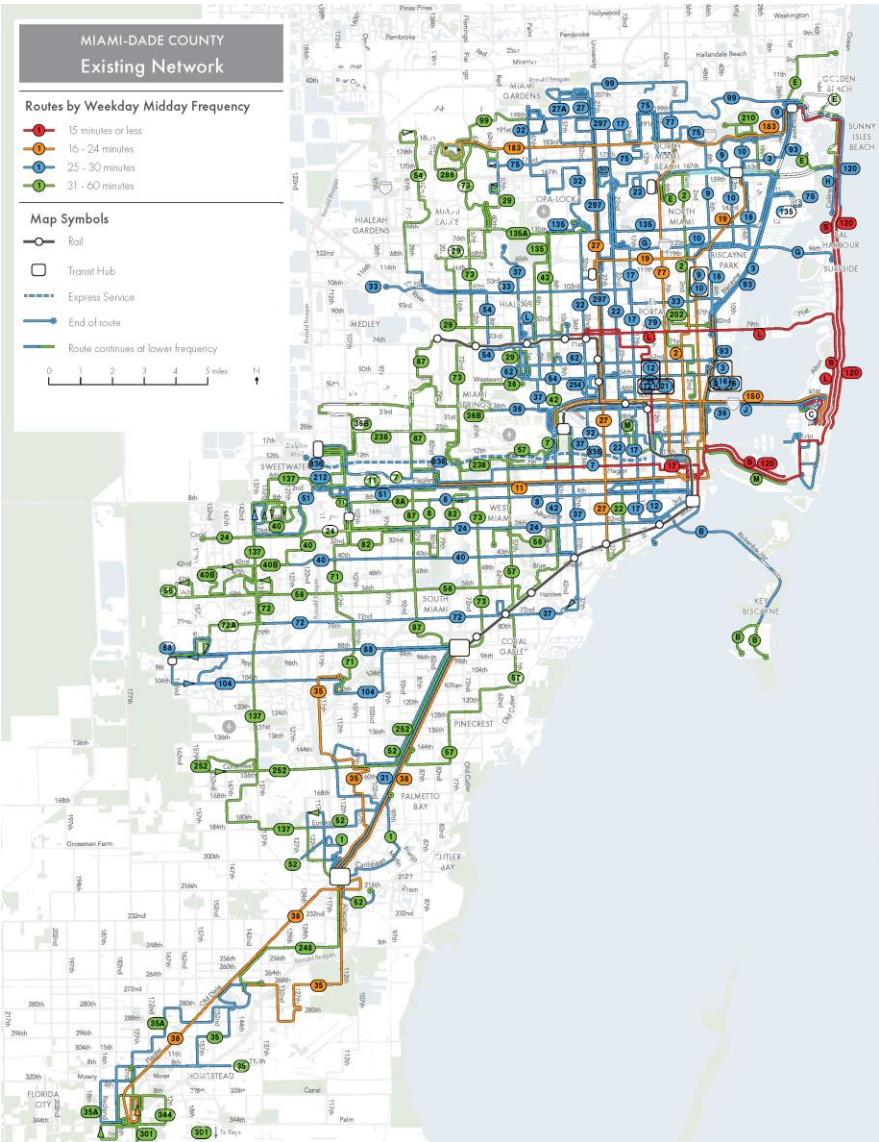
OUTREACH 2018-2020

- 5000+ Survey Responses
- 1,700+ Text Message Conversations
- 140 Workshops / Presentations that engaged 2,800+ people

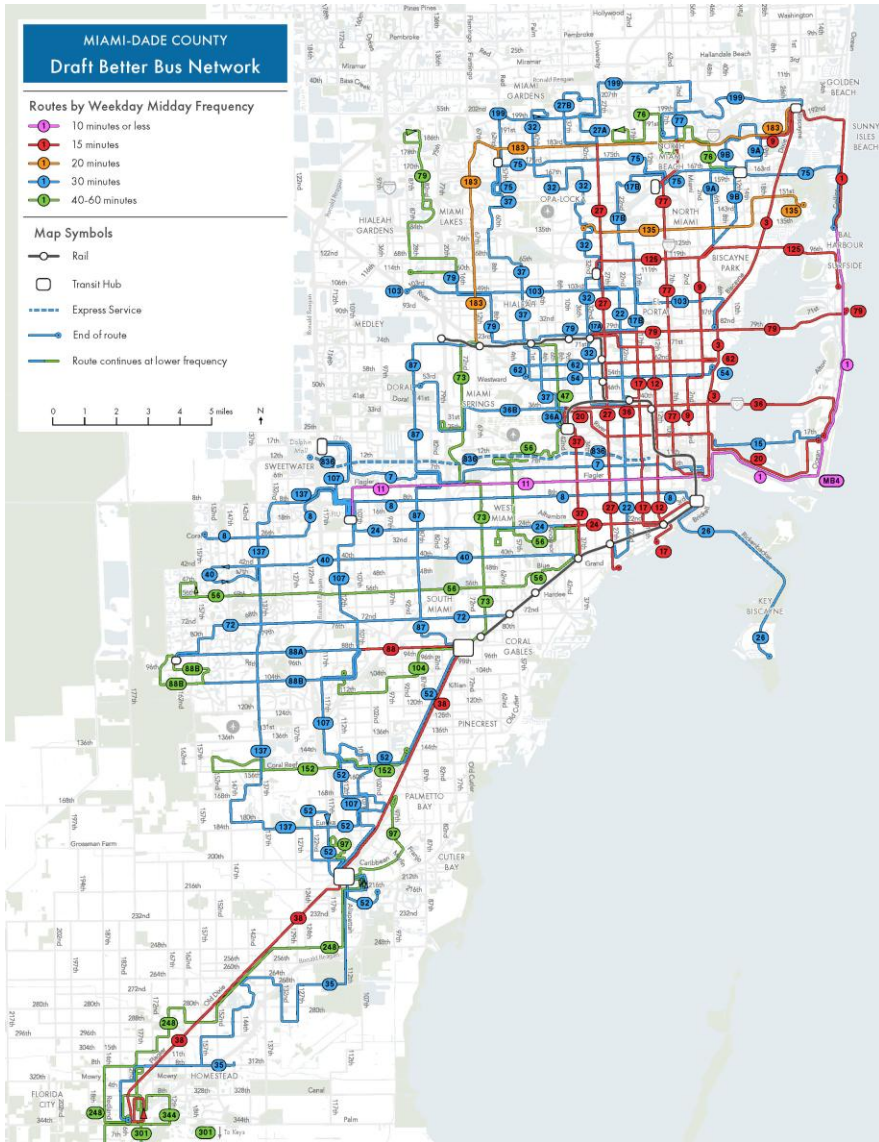


WHAT ARE THE CHANGES?

Existing Bus Network



Proposed Better Bus Network



MIAMI BEACH

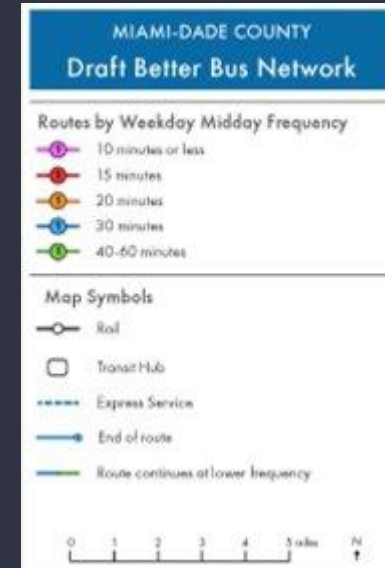
Better
Bus
Network



MIAMI-DADE
COUNTY



Existing
Network

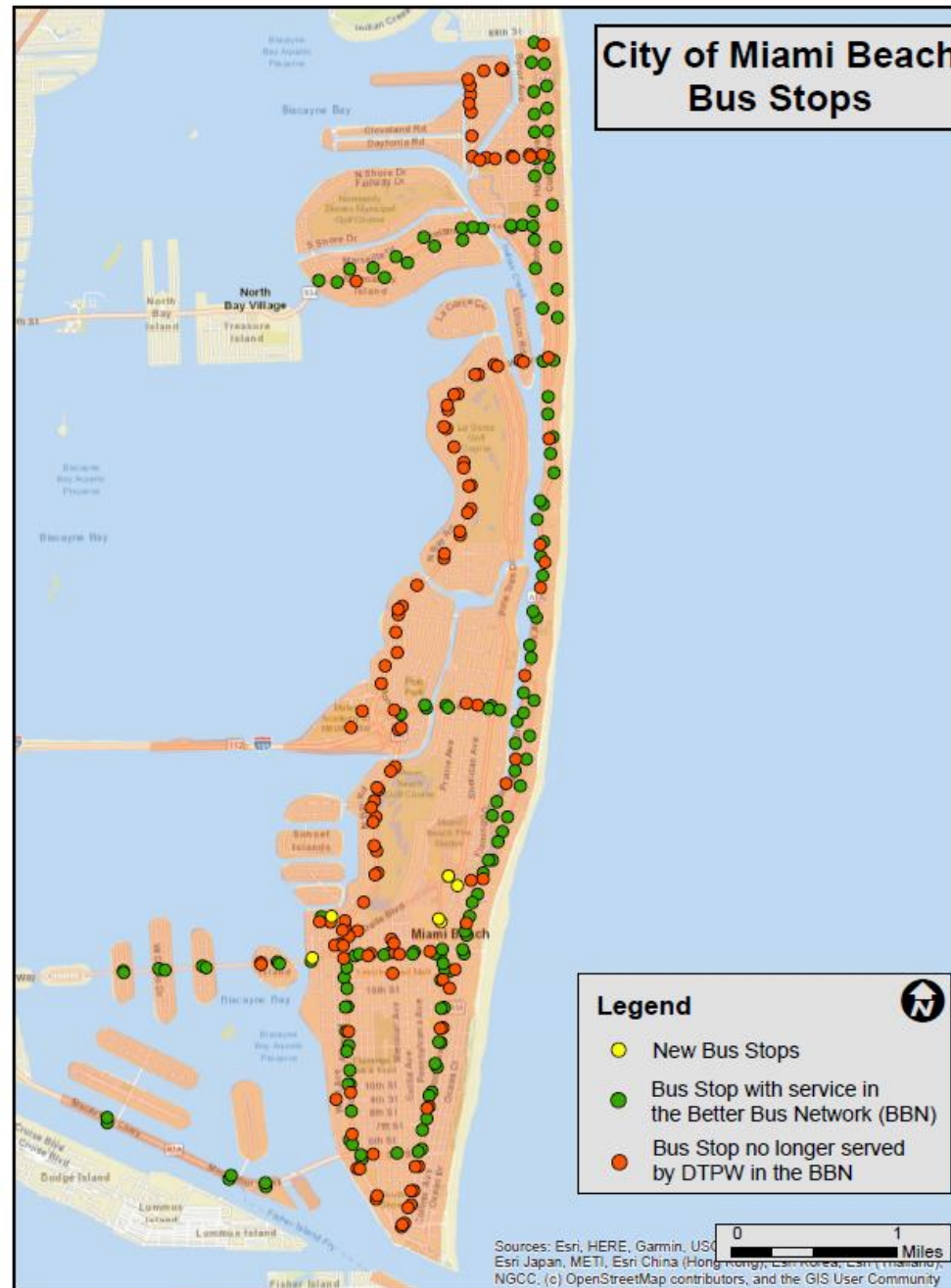


Better Bus
Network



BUS STOPS

Miami Beach: Existing Stop Description	Total Stops	Avg. Daily Ridership (2018)
Eliminated for stop spacing	32	376
Eliminated because no nearby service in BBN	97	349
New Stops	7	-
Considered for Relocation/Consolidation	14	778
Remain	131	11,356
total	281	12,859



Service Planning and Scheduling, DTPW. 04-08-21

Better
Bus
Network



SENIORS & BUS STOP SPACING

- 2018 & 2019 surveys captured responses from over 400 senior passengers
- 2018 - >50% wanted a stop spacing that gave them a faster journey with nearly 30% specifying a longer walk for a shorter wait at the bus stop.
- 2019 - 60% stated they would be willing to walk at least $\frac{1}{4}$ mile to the nearest stop

DOWNTOWN



Existing Network



Better Bus Network

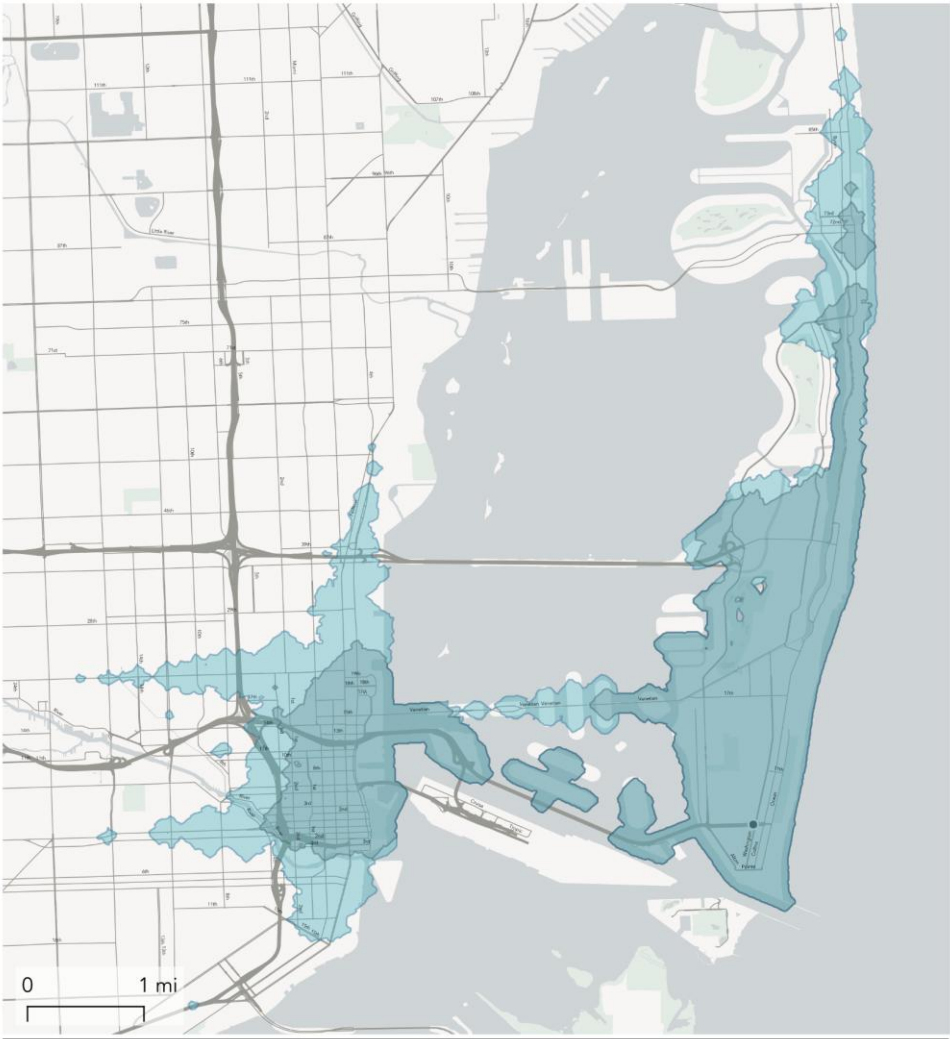
MAJOR IMPROVEMENTS

- More frequent service along the Causeways: Julia Tuttle, Broad, Lehman
- More frequent, all day service along Venetian Causeway.
- Simplification/reduction of overlapping service will allow buses to arrive more consistently.
- Less duplication with Miami Beach Trolley.

How far can I travel in 45 minutes from
South Beach - Washington and 5th St
at noon?



Better Bus Network

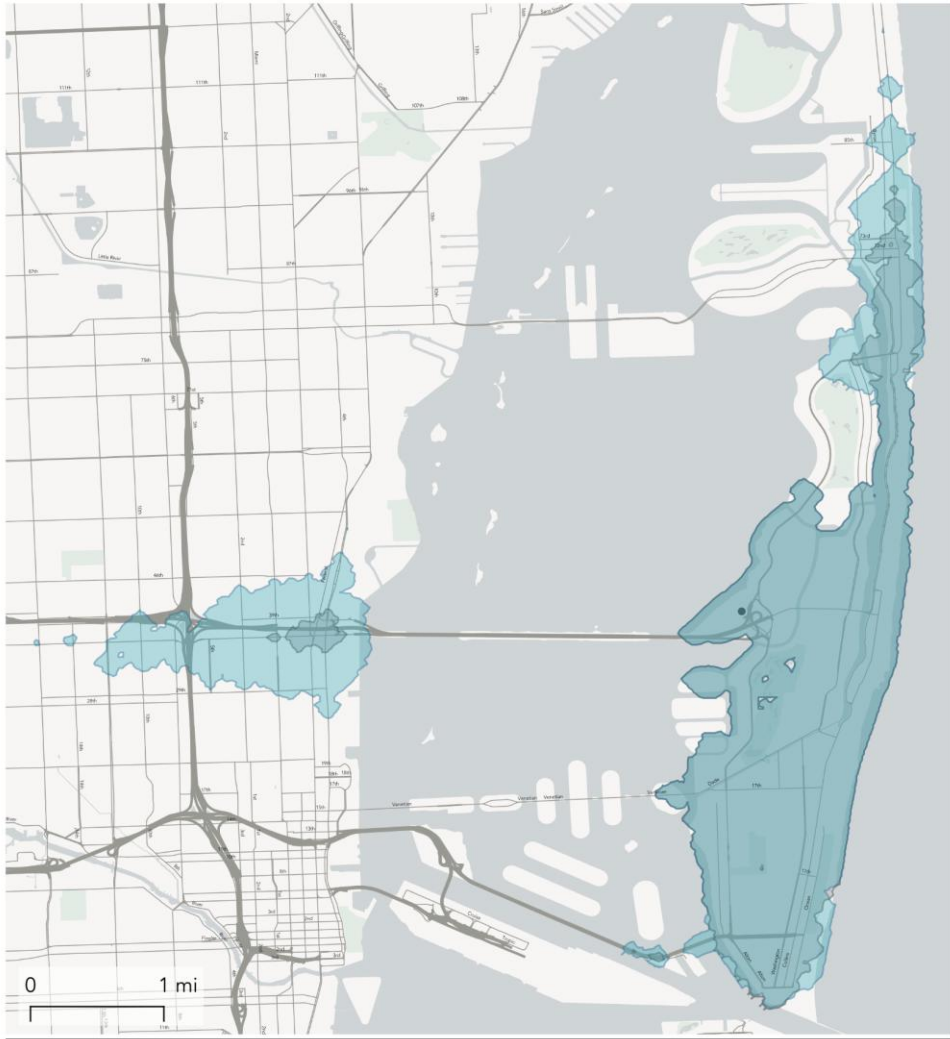


Change in opportunities (jobs and services) reachable	+56,440	+35%
Change in residents reachable	+49,990	+70%

How far can I travel in 45 minutes from
Mt Sinai Hospital
at noon?



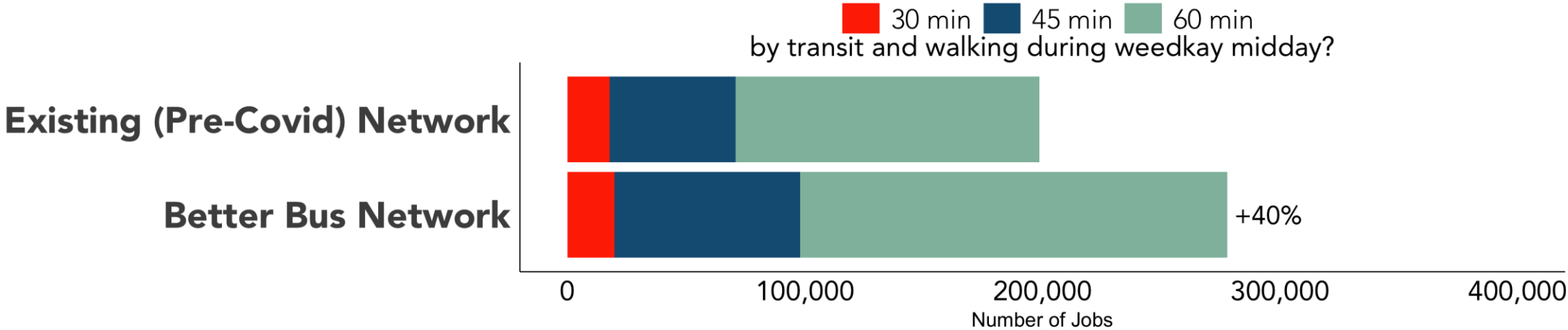
Better Bus Network



Change in opportunities (jobs and services) reachable	+7,885	+20%
Change in residents reachable	+19,110	+35%

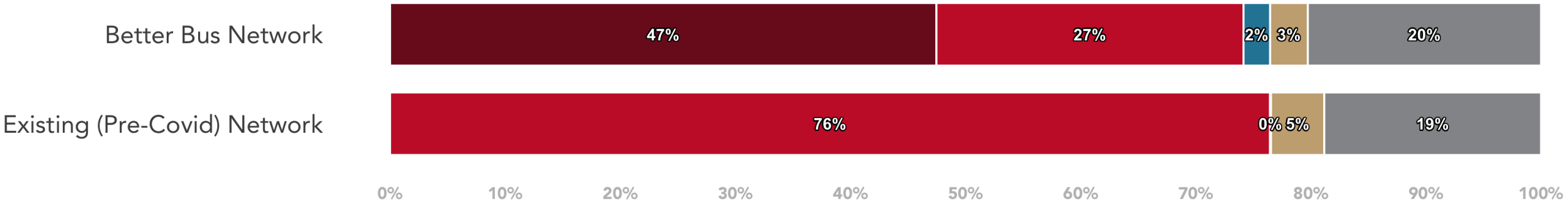
ACCESS TO JOBS AND SERVICES

How many opportunities (jobs and services) can the average person in Miami Beach reach in...

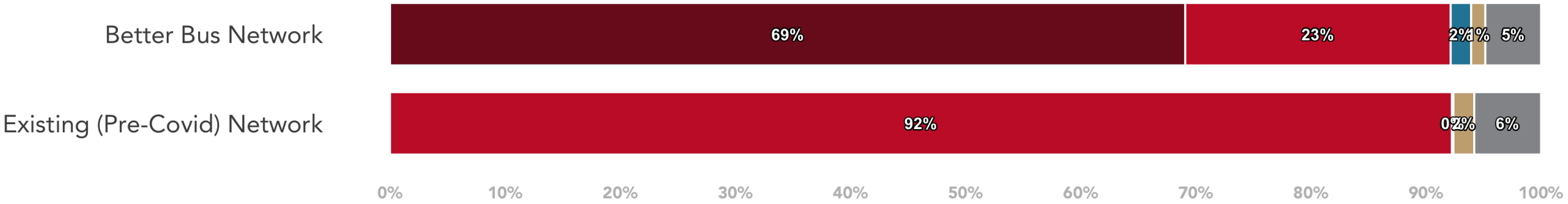


Access to Transit - Weekday

What percentage of residents in Miami Beach are near a bus route?



Access is measured as being located within 1/4 mile of a bus stop.



Access is measured as being located within 1/2 mile of a bus stop.

MIAMI BEACH ROUTE CHANGES



- New Route 1 – Will serve 120 alignment along Washington Ave and A1A to Aventura. 7.5 to Haulover and 15 min to Aventura all day.
- New Route 20 – Will serve 119/S alignment along Alton Rd to Mt Sinai. Transfer at Omni required to continue to Govt Center and transfer at Lincoln/Washington required to continue north along A1A to Aventura. Will serve route 113/M points west on the mainland to MIA. 15 min all day.
- 36 – Will be extended to Lincoln/Washington and frequency increased across Julia Tuttle. Will not serve inside Mt. Sinai. 15 min all day.
- New Route 79 – Similar to existing route 112/L. Truncated at Collins Ave. Overnight will serve Lincoln/Washington. 15 min all day.
- 79 MAX – Discontinued. Merged with new route 79.
- 101/A – Number changed to 15 and extended to Collins Park. 30 min all day.
- 103/C – Discontinued. Low ridership. Duplicates service on Alton/Washington.
- 110/J – Discontinued. See route 36.
- 112/L – Discontinued. See new route 79.
- 113/M – Discontinued. See new route 20.
- 115 – Discontinued. Low ridership.
- 119/S – Discontinued. See new route 20.
- 120 – Discontinued. Route 1 replaces alignment.
- 125 – Similar to existing route 107/G. Extended to connect with Miami Beach Trolley in North Beach. 15 min all day.
- 150 – Discontinued. Route 20 replaces alignment.

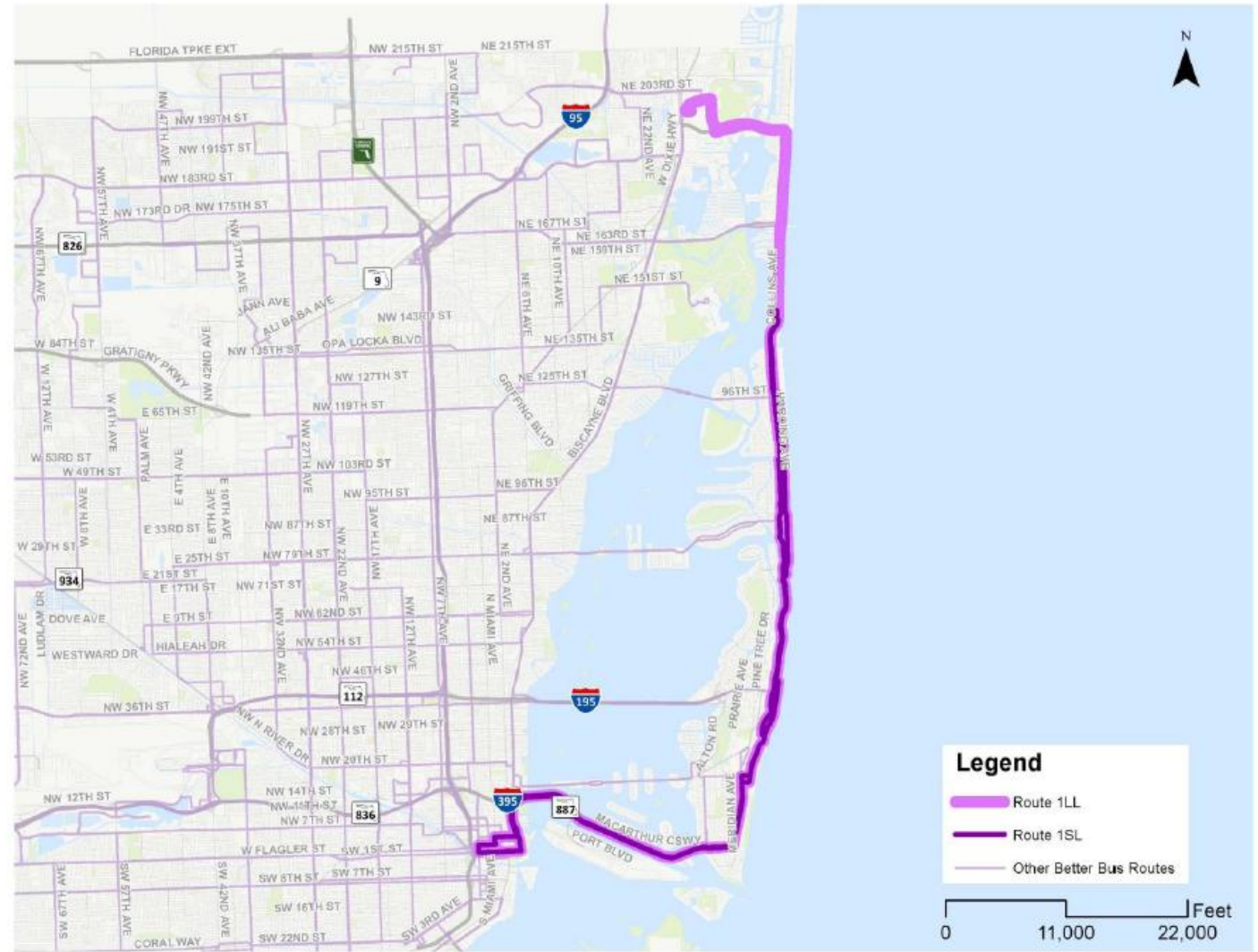
Better Bus Route 1 – Downtown to Aventura Mall

Key Destinations: Bus Terminal at Aventura Mall, Downtown Miami, Miami Beach, Government Center Metrorail and Metromover station.

	Weekdays	Weekends
Peak Frequency	7.5/15	7.5/15 Sat 10/30 Sun
Off Peak Frequency	7.5/15	
Span of Service	24 hours	24 hours

Note:

Will serve same alignment as existing route 120 except for Omni terminal and stops north of 186 St in Sunny Isles Beach. All day frequency 7.5 min. to Haulover and 15 min. to Aventura.

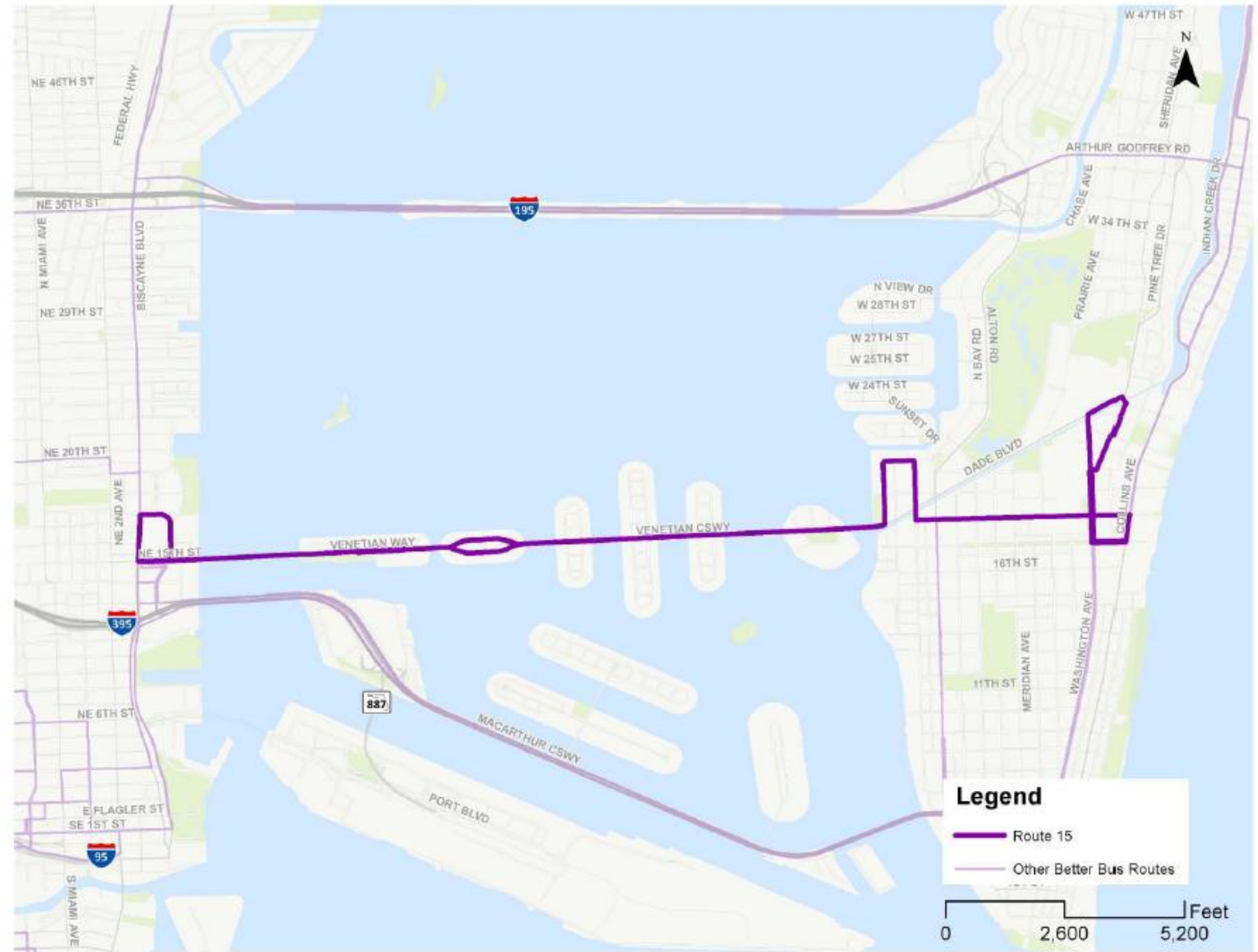


Better Bus Route 15 via Venetian Causeway

Key Destinations: Miami Beach, Adrienne Arsht Center Metromover station / Omni Metrobus terminal

	Weekdays	Weekends
Peak Frequency	30	30 Sat 30 Sun
Off Peak Frequency	30	
Span of Service	5:00 AM to 12:00 AM	5:00 AM to 12:00 AM Sat 5:00 AM to 10:00 PM Sun

Note:
Renamed from existing Route 101. Extended to Washington Ave/Dade Blvd. 30 min all day service.

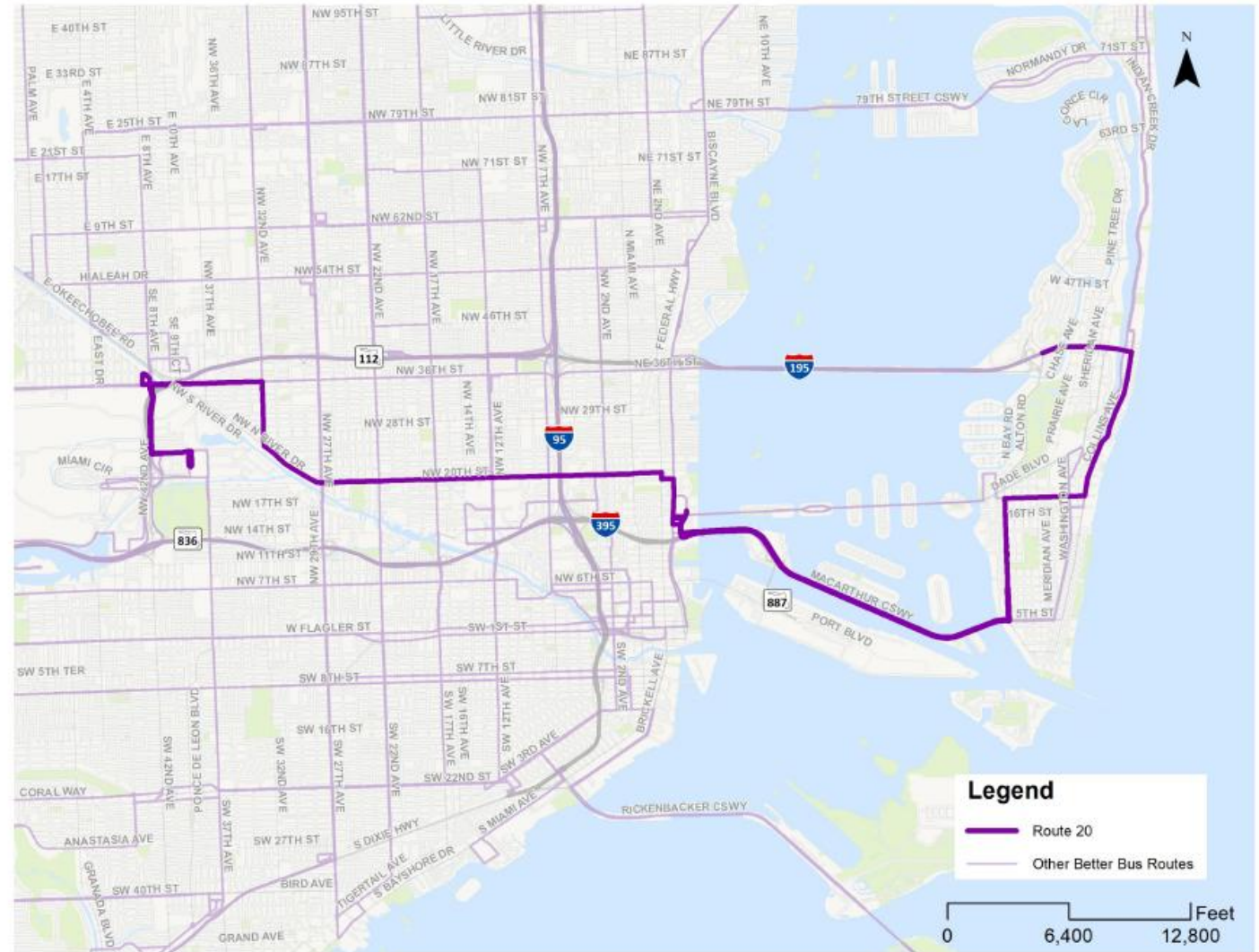


Better Bus Route 20 – Airport-Miami Beach

Key Destinations: Miami Beach, Adrienne Arsht Center Metromover station / Omni Metrobus terminal, Miami International Airport.

	Weekdays	Weekends
Peak Frequency	15	15 Sat 20 Sun
Off Peak Frequency	15	
Span of Service	4:00 AM to 12:00 AM	5:00 AM to 12:00 AM

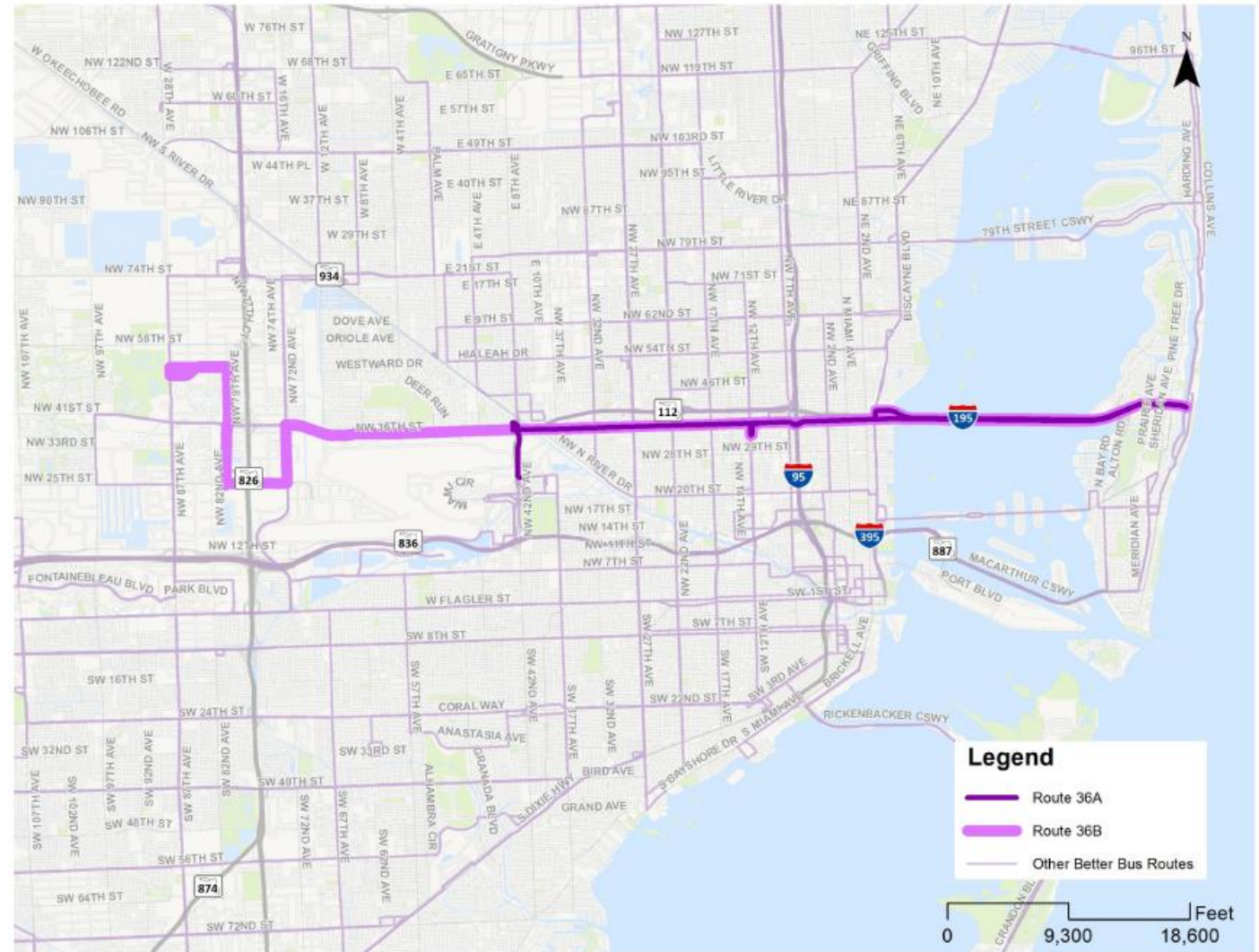
Note:
New route from MIA to Miami Beach.
Route mimics routes 119/S and 32 with an extension to MIA. 15 min frequency all day.



Key Destinations: Miami International Airport, Downtown Doral, Allapattah Metrorail station, Miami Beach.

	Weekdays	Weekends
Peak Frequency	15/30	30 Sat 20/40 Sun
Off Peak Frequency	15/30	
Span of Service	4:00 AM to 12:00 AM	5:00 AM to 12:00 AM

Note:
Existing service is consolidated with route 110/J into one continuous route every 15 minutes to the beach from NW 42 Ave. Truncated in Doral. Deviated to serve new Jackson West Campus.

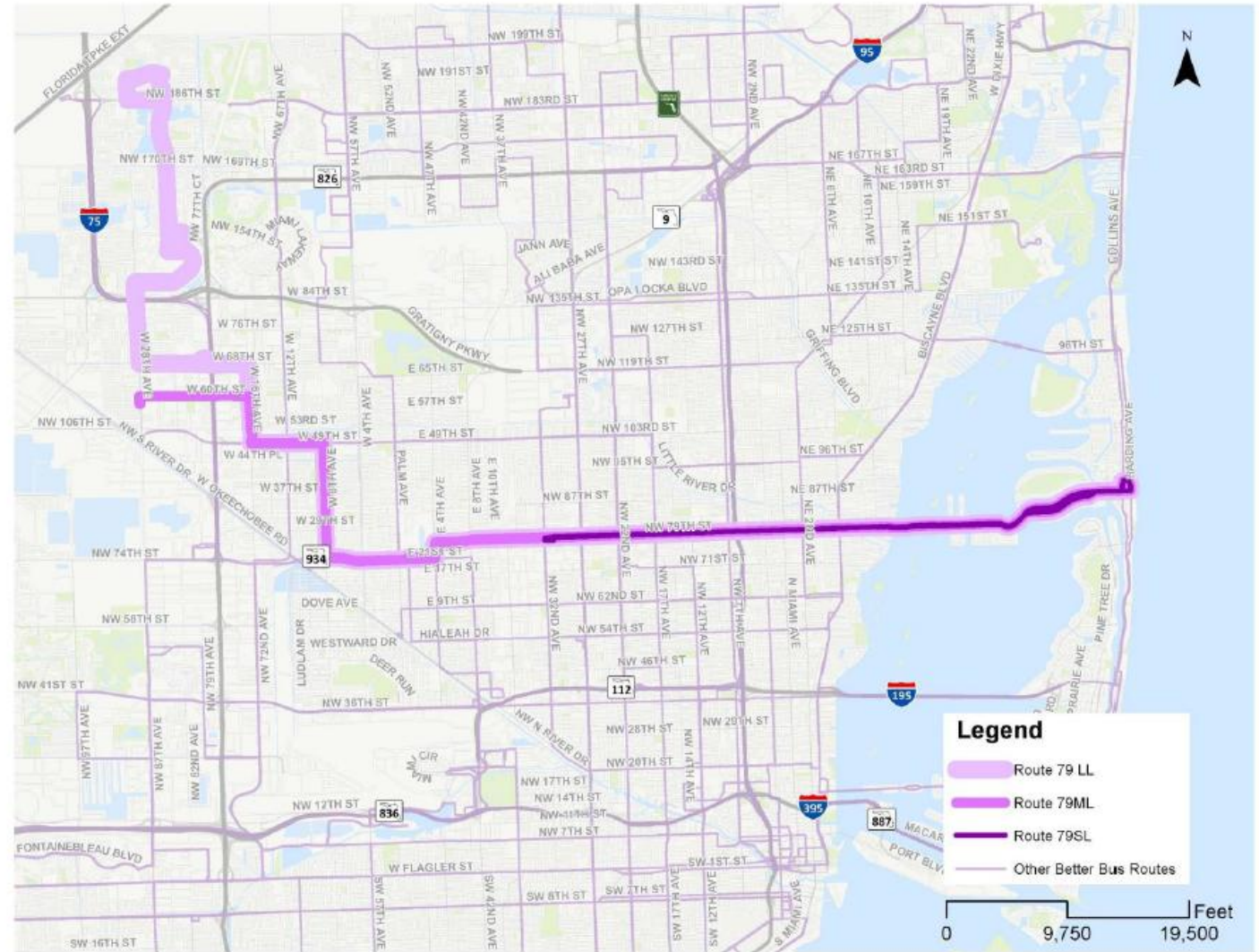


Better Bus Route 79 – Miami Gardens **Dr/87 Ave-Miami Beach**

Key Destinations: Miami Lakes, Hialeah Gardens, Hialeah, Tri-Rail, and Northside Metrorail stations, 73 St & Collins Ave on Miami Beach.

	Weekdays	Weekends
Peak Frequency	15/30/60	15/30/60 Sat 20/60/60 Sun
Off Peak Frequency	15/30/60	
Span of Service	24 hours	24 hours

Note:
Replaces existing routes 79 and 112/L, truncated at A1A, and extended to cover portions of existing Route 54.



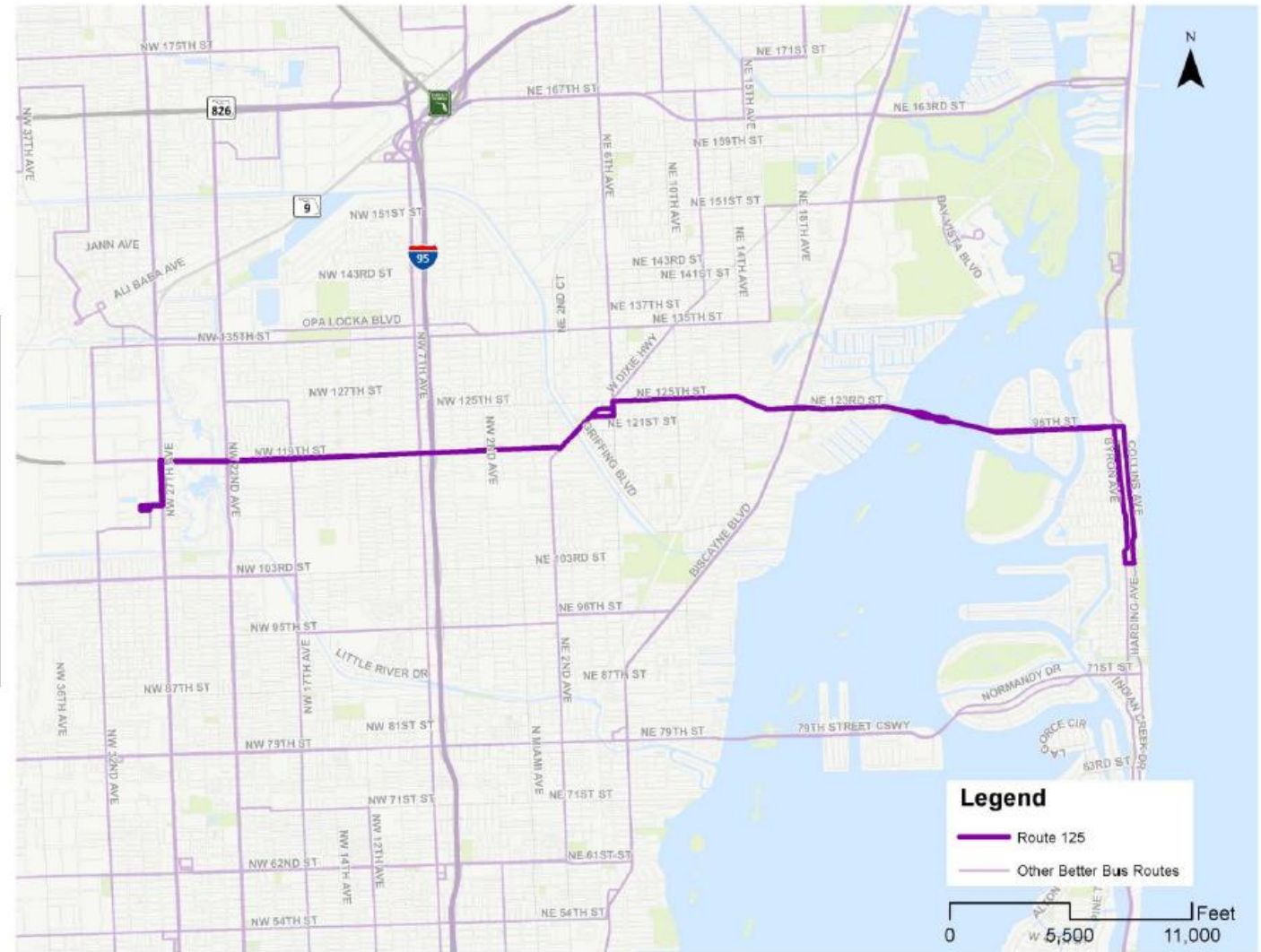
Better Bus Route 125 – MDC North-Surfside

Key Destinations: Miami Dade College North Campus, Bay Harbor Islands, Bal Harbour, Surfside.

	Weekdays	Weekends
Peak Frequency	15	15 Sat 20 Sun
Off Peak Frequency	15	
Span of Service	4:00 AM to 12:00 AM	5:00 AM to 12:00 AM

Note:

Will serve areas currently served by existing route 19 and 107/G. More frequent service along 119 St and service removed from 125 St.

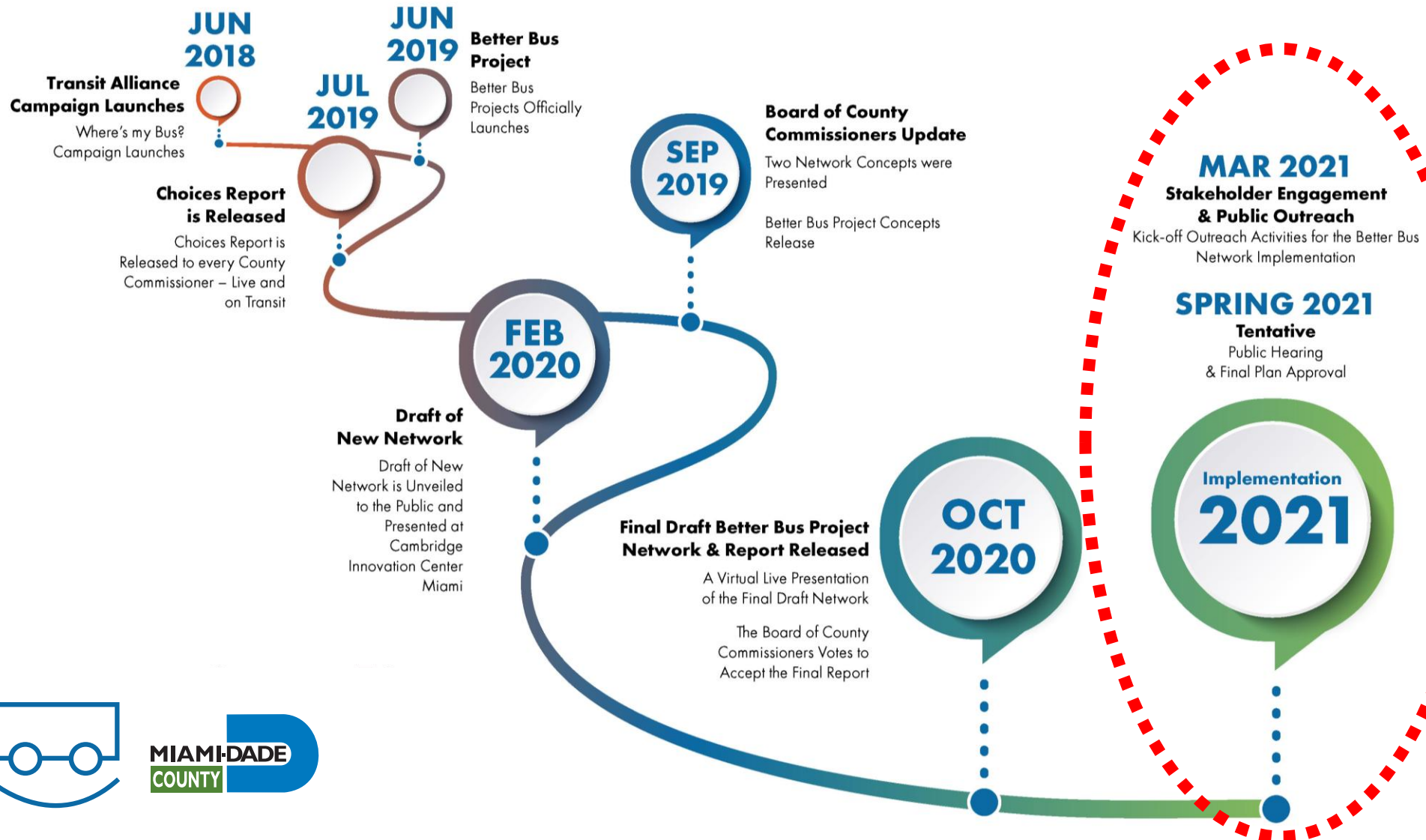


2021 OUTREACH

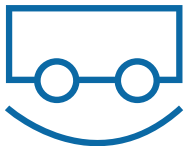
- Online Survey
- Community Meetings
- Stakeholder Meetings
- Project Splash Page
- Text Message Line
- Phone Scheduler
- Email Desk



NEXT STEPS



Better
Bus
Network



MIAMI-DADE
COUNTY



**Better
Bus
Network**



**MIAMI-DADE
COUNTY**

 **Text 786-226-0590**

 **www.miamidade.gov/betterbus**

 **questions@betterbus.miami**

