

DRB RESUBMITTAL
REQUEST FOR DRB APPROVAL FOR:
6342-6360 NORTH BAY ROAD
MIAMI BEACH, FLORIDA 33141
DRB CASE FILE #DRB20-0614

SCOPE OF WORK

PROJECT SCOPE:

NEW GARDEN, CANOPY TREES, RELOCATION OF 2 LARGE EXISTING FICUS TREES, NEW ACCESSORY GAME COURTS, CABANA AND SMALL STORAGE ROOM FOR AN EXISTING SINGLE-FAMILY HOME.

REQUESTED VARIANCES:

1. ALLOW NEW 1-STORY OUTDOOR STORAGE UNIT AT NORTHWEST CORNER OF EXISTING 2-STORY HOME AT EXISTING SETBACK OF 15'-3".
2. ALLOW 18' TALL TENNIS COURT LIGHTS SETBACK 10' TO THE POLES AND 13' TO THE LIGHT FIXTURES FROM SOUTH PROPERTY LINE WHERE 41'-3" IS REQUIRED.
3. ALLOW SUM OF SIDE SETBACKS OF 25'-3" WHERE 56'-6" IS REQUIRED TO INSTALL 18' TALL TENNIS COURT LIGHTS.

6342 / 6360 N BAY ROAD - SECOND SUBMITTAL



No copies, transmissions, reproductions, or electronic revisions of any portions of these drawings in whole or in part be made without the express written permission of CFZDESIGN, LLC. All designs indicated in these drawings are property of CFZDESIGN, LLC. All copyrights reserved © 2021.

SEAL:

Carolina Monteiro
Digitally signed by Carolina Monteiro
Date: 2021.03.18 20:13:08 -04'00'

Cover Sheet

03-16-2021



6342 / 6360 N BAY ROAD - SECOND SUBMITTAL



LANDSCAPE ARCHITECTURE AND DESIGN
WWW.CLADLANDSCAPE.COM
786.536.6079

&

CFZ DESIGN

ARCHITECTURE & INTERIOR DESIGN
WWW.CFZDESIGN.COM | 239.898.7549

No copies, transmissions, reproductions, or electronic revisions of any portions of these drawings in whole or in part be made without the express written permission of CFZDESIGN, LLC. All designs indicated in these drawings are property of CFZDESIGN, LLC. All copyrights reserved © 2021.

SEAL:

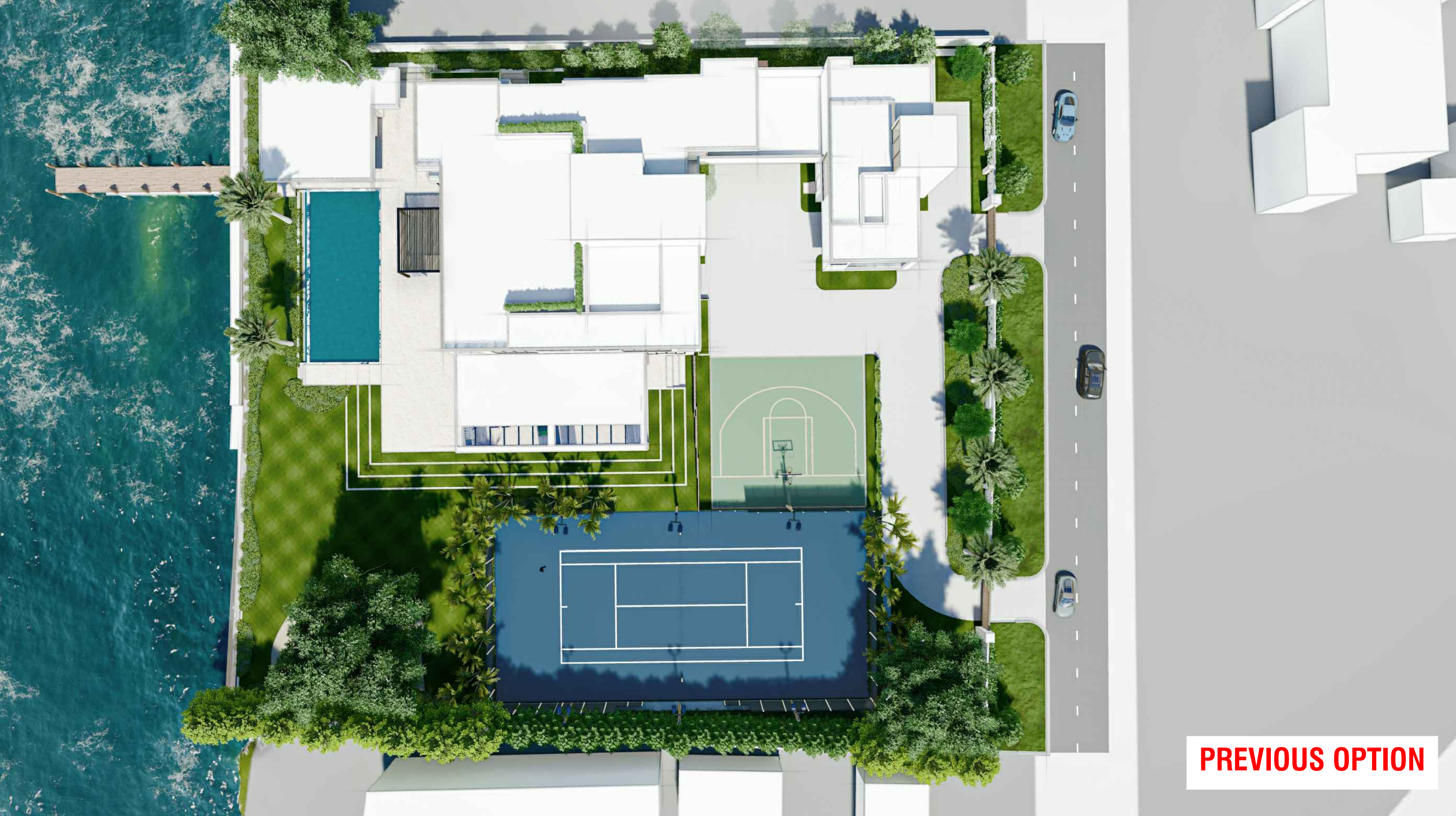
Christopher
Fernandez

Digitally signed by
Christopher Fernandez
Date: 2021.03.18
17:37:13 -04'00'

Axonometric

03-16-2021

_A-000



PREVIOUS OPTION

6342 / 6360 N BAY ROAD - SECOND SUBMITTAL



& **CFZ DESIGN** |

LANDSCAPE ARCHITECTURE AND DESIGN
WWW.CLADLANDSCAPE.COM
786.536.6079

ARCHITECTURE & INTERIOR DESIGN
WWW.CFZDESIGN.COM | 239.898.7549

No copies, transmissions, reproductions, or electronic revisions of any portions of these drawings in whole or in part be made without the express written permission of CFZDESIGN, LLC. All designs indicated in these drawings are property of CFZDESIGN, LLC. All copyrights reserved © 2021.

SEAL:

**Carolina
Monteiro**

Digitally signed by
Carolina Monteiro
Date: 2021.03.18
20:13:49 -04'00'

Previous Illustrative Overall Site Plan

03-16-2021

L-200.0



6342 / 6360 N BAY ROAD - SECOND SUBMITTAL



LANDSCAPE ARCHITECTURE AND DESIGN
WWW.CLADLANDSCAPE.COM
786.536.6079

&

CFZ DESIGN

ARCHITECTURE & INTERIOR DESIGN
WWW.CFZDESIGN.COM | 239.898.7549

No copies, transmissions, reproductions, or electronic revisions of any portions of these drawings in whole or in part be made without the express written permission of CFZDESIGN, LLC. All designs indicated in these drawings are property of CFZDESIGN, LLC. All copyrights reserved © 2021.

SEAL:

Carolina
Monteiro

Digitally signed by
Carolina Monteiro
Date: 2021.03.18
20:14:04 -04'00'

Illustrative Overall Site Plan

03-16-2021

L-200.1



- MODIFICATIONS TO PROPOSAL**
- 0 ADDED PEDESTRIAN ENTRANCE FROM STREET
 - 1 ADDITIONAL GREEN SPACE
 - 2 REDUCED DRIVEWAY WIDTH FROM 24' TO 12'-0"
 - 3 ASTRO TURF ON ROOF
 - 4 INCREASED PLANTINGS SUCH AS AMOUNTS OF ADDITIONAL TREES & GROUND COVERINGS.
 - 5. REDUCE DEPTH OF GREEN STEPS FROM 4'-0 TO 3'-0"
 - 6. ROTATE TENNIS COURT
 - 7. INCREASED SETBACKS TO COURT LIGHTS
 - 8. PERGOLA COLOR CHANGE TO WHITE
 - 9. REDUCED SIZE OF BASKETBALL COURT
 - 10. LIGHT POLES SETBACK INCREASED TO 10'-0". LIGHT FIXTURES SETBACKS ARE 13'-0 (AN INCREASE OF 2'-0")
 - 11. ADDITIONAL STREET TREES

6342 / 6360 N BAY ROAD - SECOND SUBMITTAL

CLAD & **CFZ DESIGN**

LANDSCAPE ARCHITECTURE AND DESIGN
WWW.CLADLANDSCAPE.COM
786.536.6079

ARCHITECTURE & INTERIOR DESIGN
WWW.CFZDESIGN.COM | 239.898.7549

No copies, transmissions, reproductions, or electronic revisions of any portions of these drawings in whole or in part be made without the express written permission of CFZDESIGN, LLC. All designs indicated in these drawings are property of CFZDESIGN, LLC. All copyrights reserved © 2021.

SEAL:

Carolina Monteiro

Digitally signed by Carolina Monteiro
Date: 2021.03.18 20:14:23 -04'00'

Illustrative Detail Overall Site Plan

03-16-2021

L-200.2



PREVIOUS OPTION

6342 / 6360 N BAY ROAD - SECOND SUBMITTAL



LANDSCAPE ARCHITECTURE AND DESIGN
WWW.CLADLANDSCAPE.COM
786.536.6079

ARCHITECTURE & INTERIOR DESIGN
WWW.CFZDESIGN.COM | 239.898.7549

No copies, transmissions, reproductions, or electronic revisions of any portions of these drawings in whole or in part be made without the express written permission of CFZDESIGN, LLC. All designs indicated in these drawings are property of CFZDESIGN, LLC. All copyrights reserved © 2021.

SEAL:

Christopher Fernandez
Digitally signed by Christopher Fernandez
Date: 2021.03.18 17:37:47 -04'00'

Previous Aerial - Street View

03-16-2021



6342 / 6360 N BAY ROAD - SECOND SUBMITTAL



LANDSCAPE ARCHITECTURE AND DESIGN
WWW.CLADLANDSCAPE.COM
786.536.6079

&

CFZ DESIGN

ARCHITECTURE & INTERIOR DESIGN
WWW.CFZDESIGN.COM | 239.898.7549

No copies, transmissions, reproductions, or electronic revisions of any portions of these drawings in whole or in part be made without the express written permission of CFZDESIGN, LLC. All designs indicated in these drawings are property of CFZDESIGN, LLC. All copyrights reserved © 2021.

SEAL:

Christopher
Fernandez

Digitally signed by
Christopher Fernandez
Date: 2021.03.18
17:38:13 -04'00'

Proposed Aerial- Street View

03-16-2021

_A-051.1



PREVIOUS OPTION

6342 / 6360 N BAY ROAD - SECOND SUBMITTAL



6342 / 6360 N BAY ROAD - SECOND SUBMITTAL



LANDSCAPE ARCHITECTURE AND DESIGN
WWW.CLADLANDSCAPE.COM
786.536.6079

&

CFZ DESIGN

ARCHITECTURE & INTERIOR DESIGN
WWW.CFZDESIGN.COM | 239.898.7549

No copies, transmissions, reproductions, or electronic revisions of any portions of these drawings in whole or in part be made without the express written permission of CFZDESIGN, LLC. All designs indicated in these drawings are property of CFZDESIGN, LLC. All copyrights reserved © 2021.

SEAL:

Christopher
Fernandez

Digitally signed by
Christopher Fernandez
Date: 2021.03.18
17:38:43 -04'00'

Aerial Render

03-16-2021

_A-052.1



PREVIOUS OPTION

6342 / 6360 N BAY ROAD - SECOND SUBMITTAL



LANDSCAPE ARCHITECTURE AND DESIGN
WWW.CLADLANDSCAPE.COM
786.536.6079

&

CFZ DESIGN

ARCHITECTURE & INTERIOR DESIGN
WWW.CFZDESIGN.COM | 239.898.7549

No copies, transmissions, reproductions, or electronic revisions of any portions of these drawings in whole or in part be made without the express written permission of CFZDESIGN, LLC. All designs indicated in these drawings are property of CFZDESIGN, LLC. All copyrights reserved © 2021.

SEAL:

Christopher Fernandez

Digitally signed by Christopher Fernandez
Date: 2021.03.18 17:38:57 -04'00'

Previous Ocean Elevation

03-16-2021



6342 / 6360 N BAY ROAD - SECOND SUBMITTAL

CLAD & **CFZ DESIGN**

LANDSCAPE ARCHITECTURE AND DESIGN
WWW.CLADLANDSCAPE.COM
786.536.6079

ARCHITECTURE & INTERIOR DESIGN
WWW.CFZDESIGN.COM | 239.898.7549

No copies, transmissions, reproductions, or electronic revisions of any portions of these drawings in whole or in part be made without the express written permission of CFZDESIGN, LLC. All designs indicated in these drawings are property of CFZDESIGN, LLC. All copyrights reserved © 2021.

SEAL:

Christopher Fernandez
Digitally signed by Christopher Fernandez
Date: 2021.03.18 17:39:09 -04'00'

Ocean Elevation

03-16-2021



PREVIOUS OPTION

6342 / 6360 N BAY ROAD - SECOND SUBMITTAL



LANDSCAPE ARCHITECTURE AND DESIGN
WWW.CLADLANDSCAPE.COM
786.536.8079

&

CFZ DESIGN

ARCHITECTURE & INTERIOR DESIGN
WWW.CFZDESIGN.COM | 239.898.7549

No copies, transmissions, reproductions, or electronic revisions of any portions of these drawings in whole or in part be made without the express written permission of CFZDESIGN, LLC. All designs indicated in these drawings are property of CFZDESIGN, LLC. All copyrights reserved © 2021.

SEAL:

Christopher
Fernandez

Digitally signed by
Christopher Fernandez
Date: 2021.03.18 17:39:27
-04'00'

*Previous Front Landscape
Elevation - N Bay Road View*

03-16-2021

L-300.0



6342 / 6360 N BAY ROAD - SECOND SUBMITTAL



& **CFZ DESIGN**

LANDSCAPE ARCHITECTURE AND DESIGN
WWW.CLADLANDSCAPE.COM
786.536.6079

ARCHITECTURE & INTERIOR DESIGN
WWW.CFZDESIGN.COM | 239.898.7549

No copies, transmissions, reproductions, or electronic revisions of any portions of these drawings in whole or in part be made without the express written permission of CFZDESIGN, LLC. All designs indicated in these drawings are property of CFZDESIGN, LLC. All copyrights reserved © 2021.

SEAL:

Carolina Monteiro

Digitally signed by
Carolina Monteiro
Date: 2021.03.18
20:14:50 -04'00'

*Front Landscape Elevation-
N Bay Road View*

03-16-2021

L-300



6342 / 6360 N BAY ROAD - SECOND SUBMITTAL



& **CFZ DESIGN**

LANDSCAPE ARCHITECTURE AND DESIGN
WWW.CLADLANDSCAPE.COM
786.536.6079

ARCHITECTURE & INTERIOR DESIGN
WWW.CFZDESIGN.COM | 239.898.7549

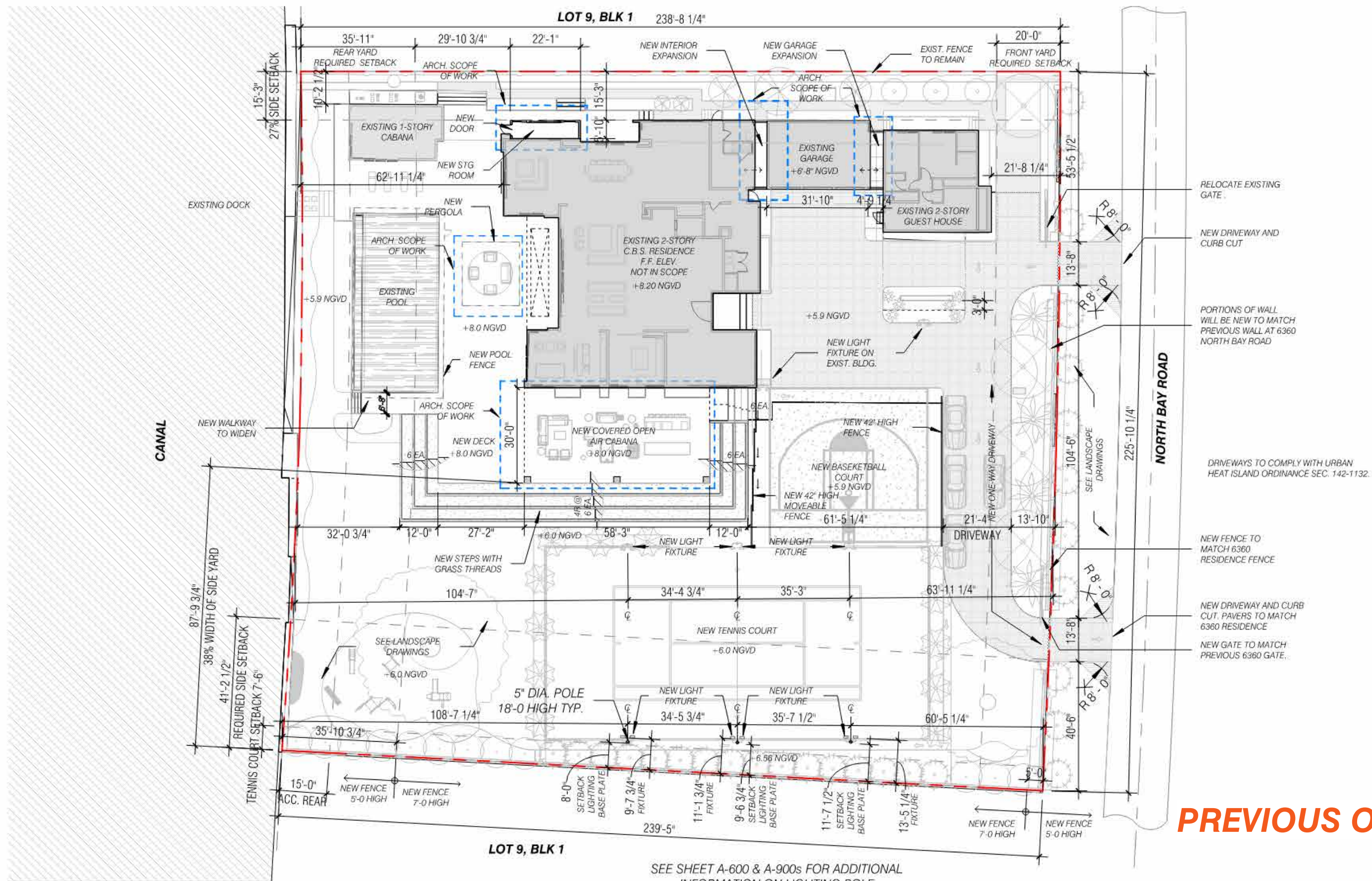
No copies, transmissions, reproductions, or electronic revisions of any portions of these drawings in whole or in part be made without the express written permission of CFZDESIGN, LLC. All designs indicated in these drawings are property of CFZDESIGN, LLC. All copyrights reserved © 2021.

SEAL:

Carolina Monteiro
Digitally signed by Carolina Monteiro
Date: 2021.03.18 20:15:06 -04'00'

Landscape Site Section

03-16-2021



PREVIOUS OPTION

6342 / 6360 N BAY ROAD - SECOND SUBMITTAL

CLAD & **CFZ DESIGN**

LANDSCAPE ARCHITECTURE AND DESIGN
WWW.CLADLANDSCAPE.COM
786.536.6079

ARCHITECTURE & INTERIOR DESIGN
WWW.CFZDESIGN.COM | 239.898.7549

No copies, transmissions, reproductions, or electronic revisions of any portions of these drawings in whole or in part be made without the express written permission of CFZDESIGN, LLC. All designs indicated in these drawings are property of CFZDESIGN, LLC. All copyrights reserved © 2021.

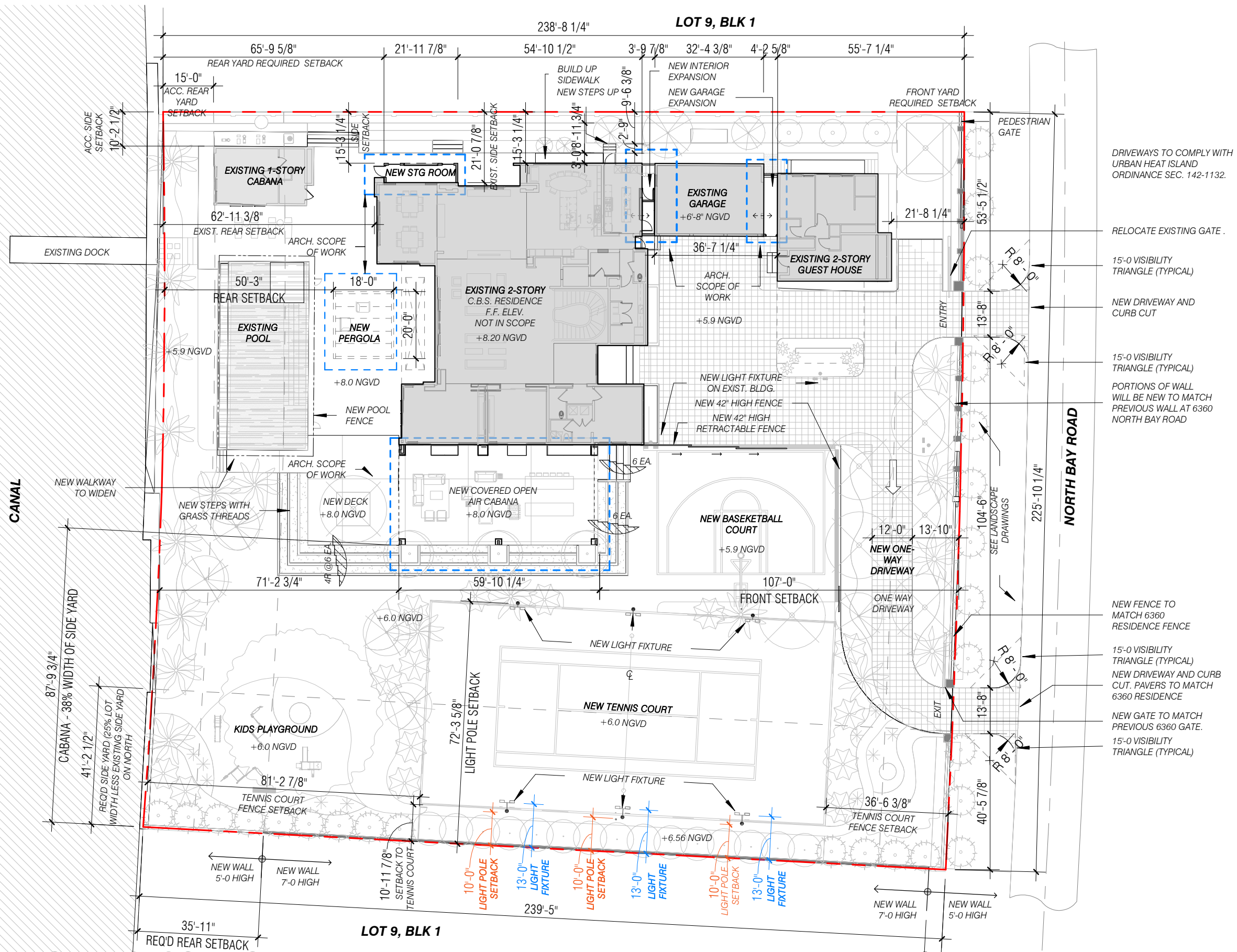
SEAL:

Christopher Fernandez
Digitally signed by Christopher Fernandez
Date: 2021.03.18 17:39:47 -04'00'

Previous Site Plan

03-16-2021

_A-100.0



6342 / 6360 N BAY ROAD - SECOND SUBMITTAL

CLAD

&

CFZ DESIGN

LANDSCAPE ARCHITECTURE AND DESIGN
WWW.CLADLANDSCAPE.COM
786.536.6079

ARCHITECTURE & INTERIOR DESIGN
WWW.CFZDESIGN.COM | 239.898.7549

No copies, transmissions, reproductions, or electronic revisions of any portions of these drawings in whole or in part be made without the express written permission of CFZDESIGN, LLC. All designs indicated in these drawings are property of CFZDESIGN, LLC. All copyrights reserved © 2021.

SEAL:

Christopher Fernandez

Digitally signed by Christopher Fernandez
Date: 2021.03.18 17:40:04 -04'00'

Site Plan

1" = 30'-0"

03-16-2021

_A-100.1