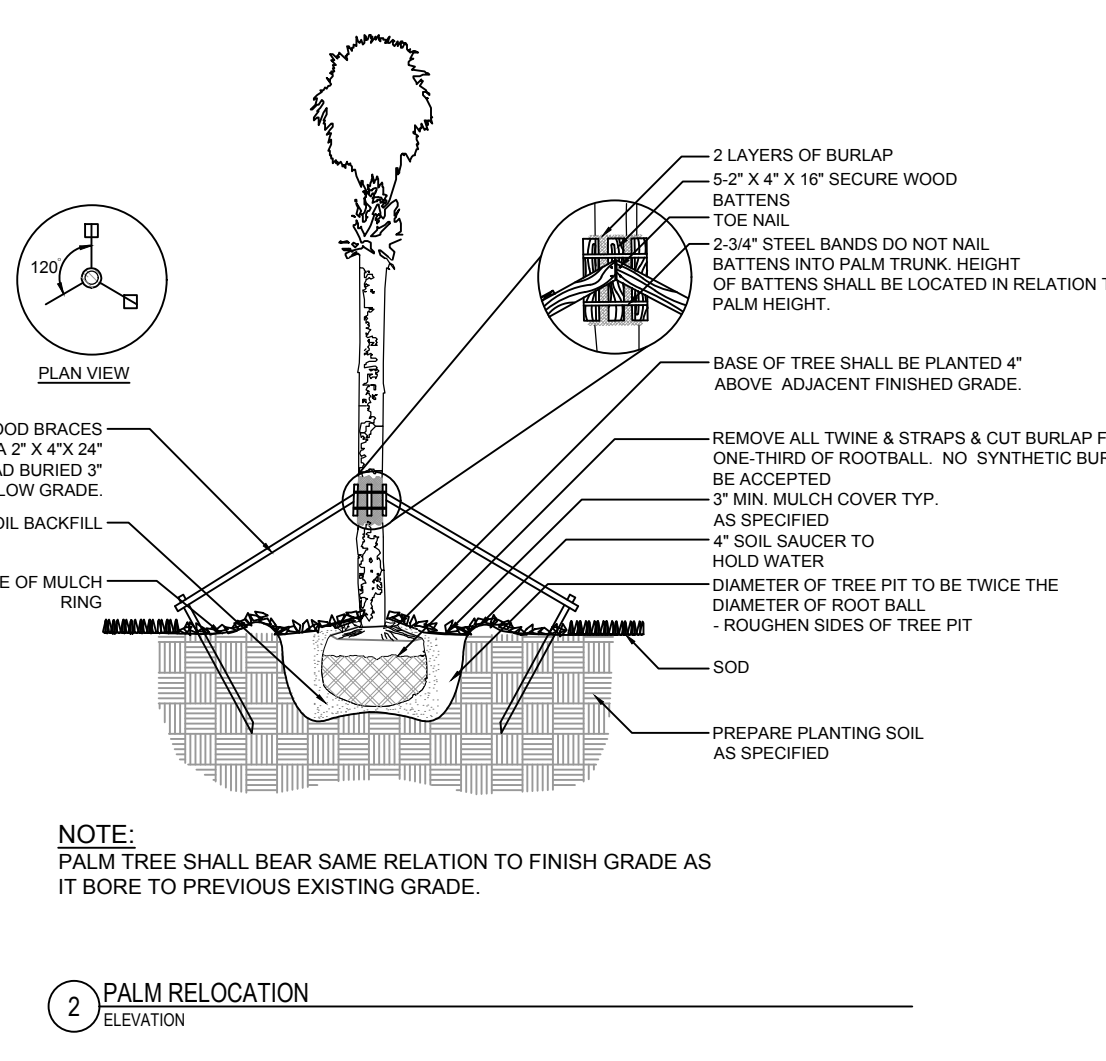
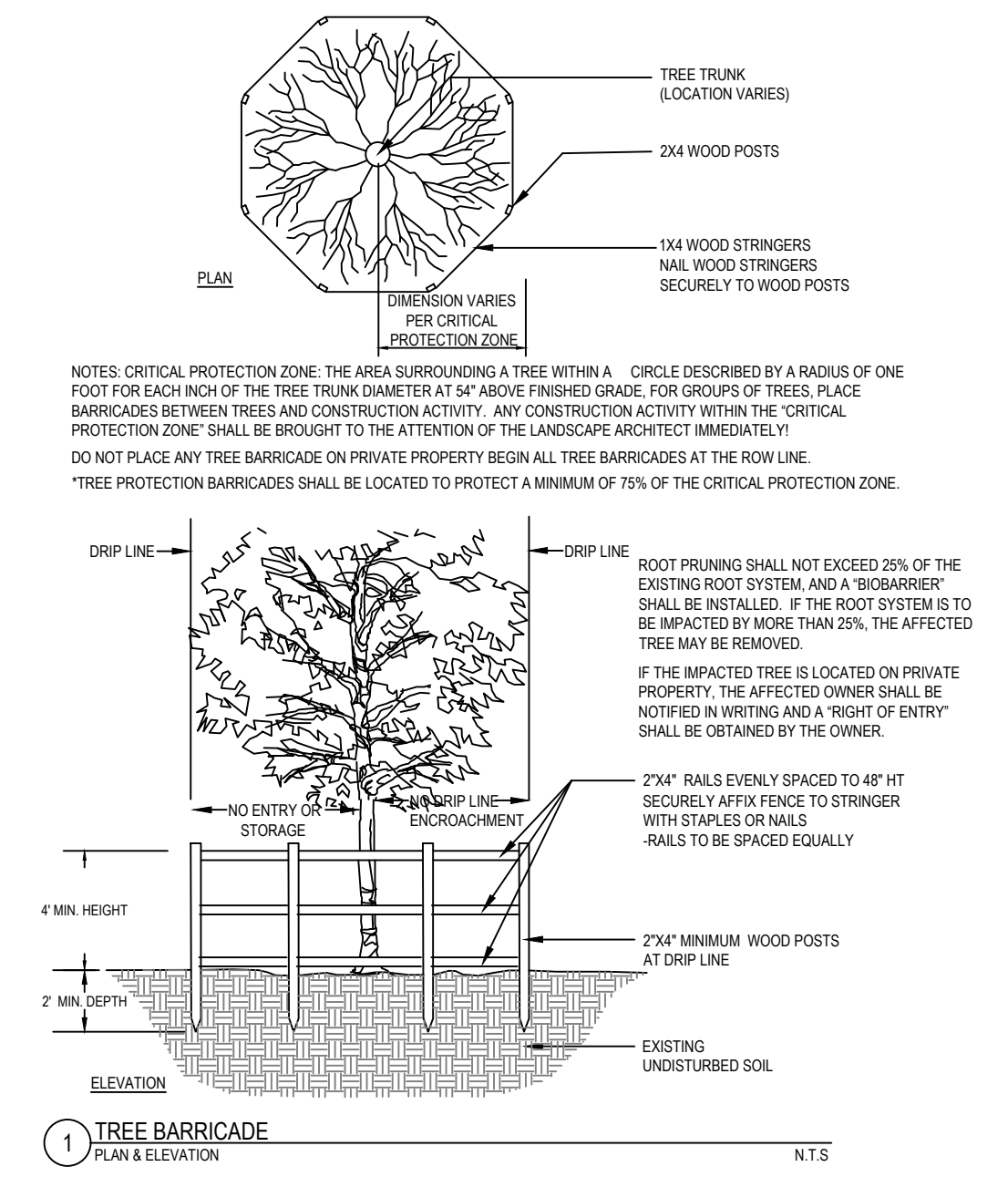
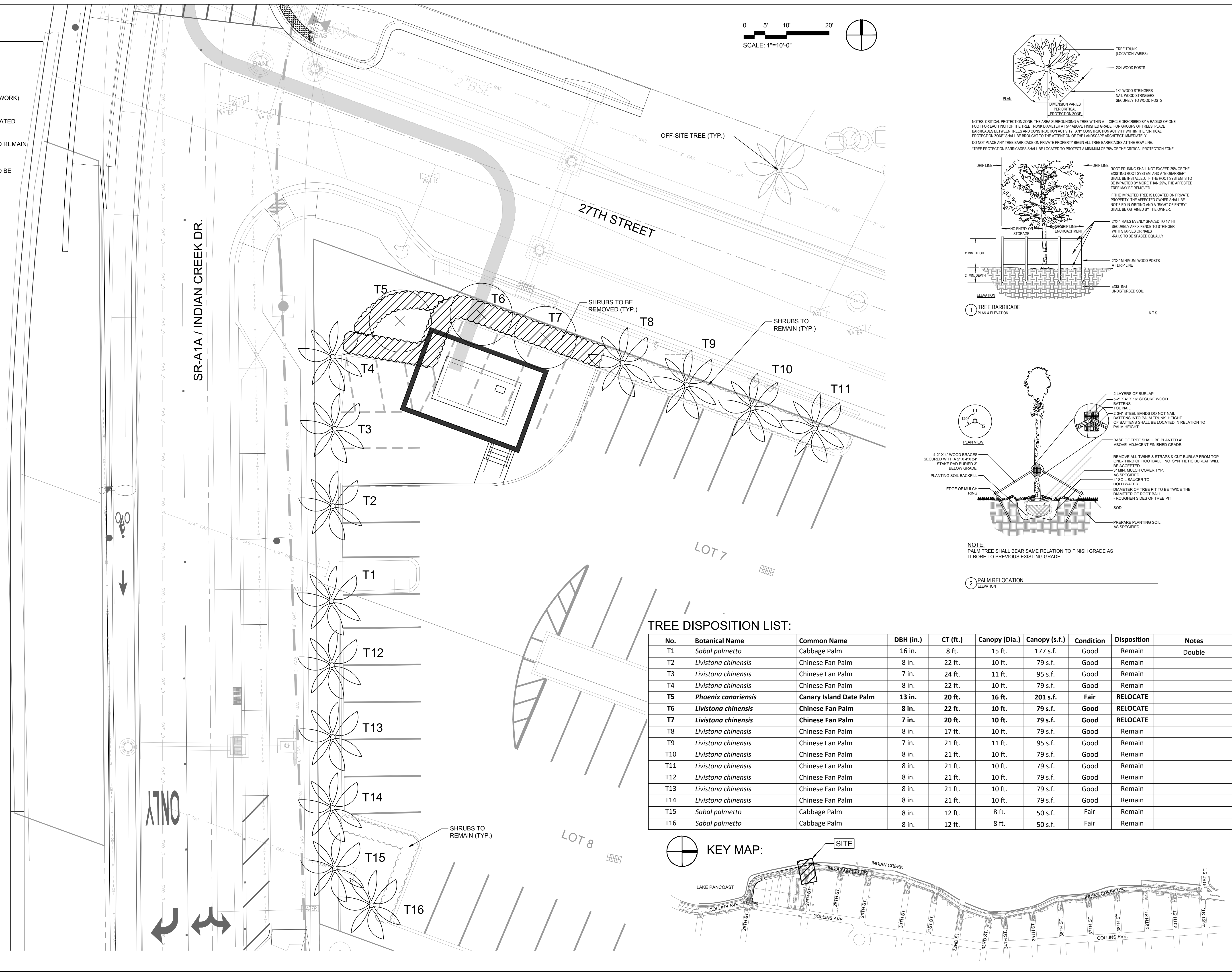
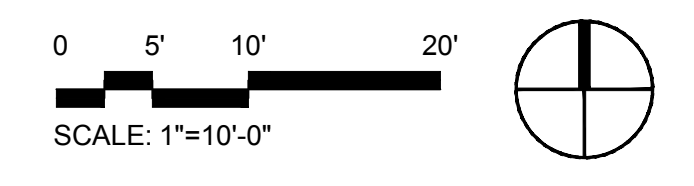


R:\Landscape\2018\18-0043-001-01 Indian Creek Greenway\Drawings\18-0043-001-01_T0 - Generator.dwg [TD-1] Sep 09, 2020 3:50pm NFASTRE

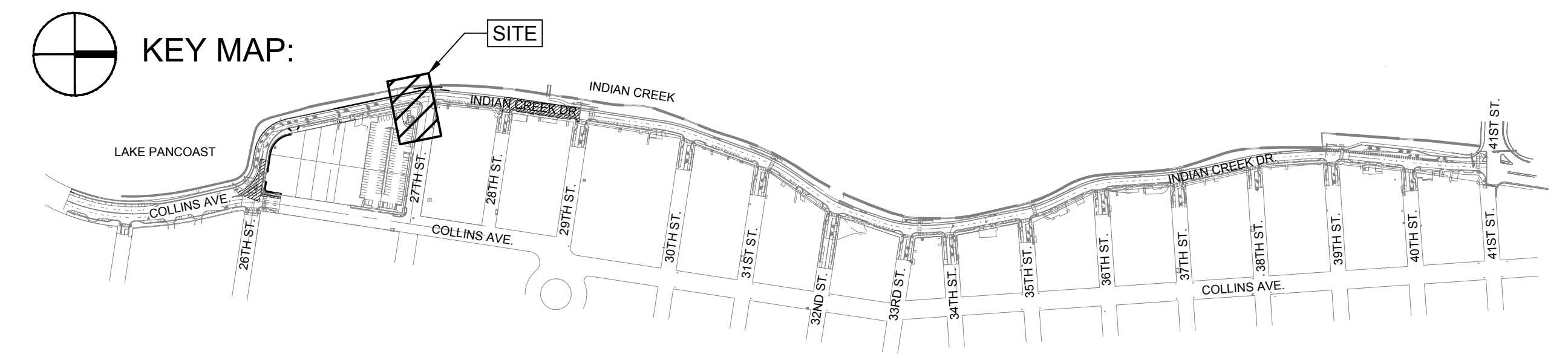
LEGEND

- XX PALMS TO REMAIN
- PALMS TO REMAIN (OUTSIDE LIMITS OF WORK)
- XX PALMS TO BE RELOCATED
- EXISTING SHRUBS TO REMAIN
- EXISTING SHRUBS TO BE REMOVED



TREE DISPOSITION LIST:

No.	Botanical Name	Common Name	DBH (in.)	CT (ft.)	Canopy (Dia.)	Canopy (s.f.)	Condition	Disposition	Notes
T1	<i>Sabal palmetto</i>	Cabbage Palm	16 in.	8 ft.	15 ft.	177 s.f.	Good	Remain	Double
T2	<i>Livistona chinensis</i>	Chinese Fan Palm	8 in.	22 ft.	10 ft.	79 s.f.	Good	Remain	
T3	<i>Livistona chinensis</i>	Chinese Fan Palm	7 in.	24 ft.	11 ft.	95 s.f.	Good	Remain	
T4	<i>Livistona chinensis</i>	Chinese Fan Palm	8 in.	22 ft.	10 ft.	79 s.f.	Good	Remain	
T5	<i>Phoenix canariensis</i>	Canary Island Date Palm	13 in.	20 ft.	16 ft.	201 s.f.	Fair	RELOCATE	
T6	<i>Livistona chinensis</i>	Chinese Fan Palm	8 in.	22 ft.	10 ft.	79 s.f.	Good	RELOCATE	
T7	<i>Livistona chinensis</i>	Chinese Fan Palm	7 in.	20 ft.	10 ft.	79 s.f.	Good	RELOCATE	
T8	<i>Livistona chinensis</i>	Chinese Fan Palm	8 in.	17 ft.	10 ft.	79 s.f.	Good	Remain	
T9	<i>Livistona chinensis</i>	Chinese Fan Palm	7 in.	21 ft.	11 ft.	95 s.f.	Good	Remain	
T10	<i>Livistona chinensis</i>	Chinese Fan Palm	8 in.	21 ft.	10 ft.	79 s.f.	Good	Remain	
T11	<i>Livistona chinensis</i>	Chinese Fan Palm	8 in.	21 ft.	10 ft.	79 s.f.	Good	Remain	
T12	<i>Livistona chinensis</i>	Chinese Fan Palm	8 in.	21 ft.	10 ft.	79 s.f.	Good	Remain	
T13	<i>Livistona chinensis</i>	Chinese Fan Palm	8 in.	21 ft.	10 ft.	79 s.f.	Good	Remain	
T14	<i>Livistona chinensis</i>	Chinese Fan Palm	8 in.	21 ft.	10 ft.	79 s.f.	Good	Remain	
T15	<i>Sabal palmetto</i>	Cabbage Palm	8 in.	12 ft.	8 ft.	50 s.f.	Fair	Remain	
T16	<i>Sabal palmetto</i>	Cabbage Palm	8 in.	12 ft.	8 ft.	50 s.f.	Fair	Remain	



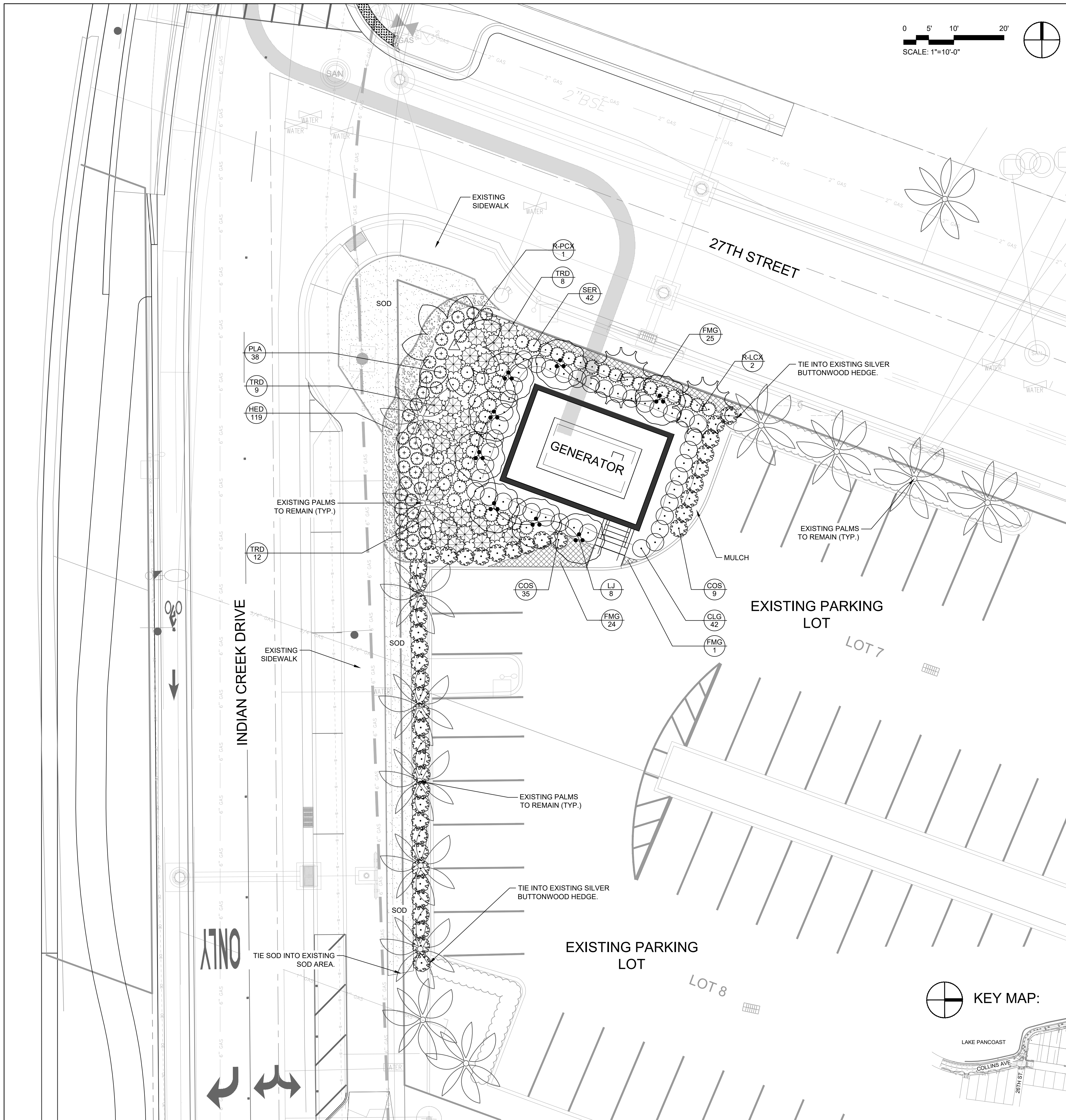
DATE:	09/09/2020
SCALE:	AS NOTED
DESIGN BY:	NDP
DRAWN BY:	NDP
CHECKED BY:	SWP
APPROVED BY:	SWP

CRAVEN - THOMPSON AND ASSOCIATES, INC.
 ENGINEERS • PLANNERS • SURVEYORS
 35653 N.W. 53RD STREET, FORT LAUDERDALE, FLORIDA, 33309
 35653 N.W. 53RD STREET, FORT LAUDERDALE, FLORIDA, 33309
 TEL: (954) 739-6409
 FAX: (954) 739-6409
 FLORIDA LICENSED ENGINEERS, SURVEYORS & LANDSCAPE ARCHITECTS BUSINESS NO. 771
 FLORIDA LICENSED LANDSCAPE ARCHITECTURE BUSINESS NO. C00014
 CRAVEN - THOMPSON AND ASSOCIATES, INC. © 2020

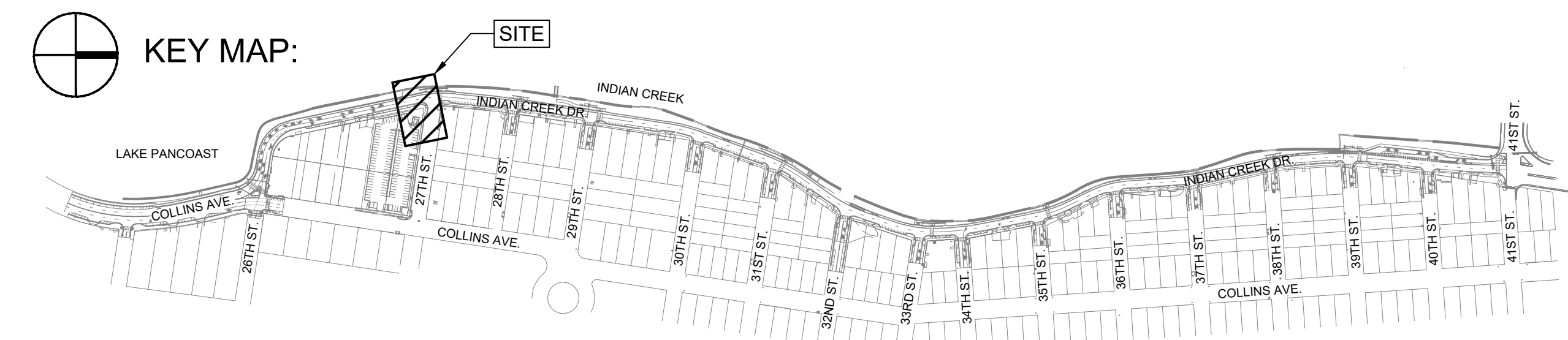
INDIAN CREEK LANDSCAPE
 27TH STREET GENERATOR
 PREPARED FOR:
 CITY OF MIAMI BEACH
TREE DISPOSITION PLAN

Scott W. Peavler
 Florida R.L.A. No. 6666976
 September 9, 2020
 PROJECT NO.
 18-0043-001-01
TD-1
 SHEET 1 OF 1

R:\Landscape\2018\18-0043-001-01 Indian Creek Greenway\Drawings\18-0043-001-01_LP - Generator.dwg [LP-1] Sep 09, 2020 3:49pm NPASTRE



PLANT SCHEDULE							
TREES	CODE	QTY	BOTANICAL NAME	COMMON NAME	SPECIFICATIONS	REMARKS	
	LJ	8	Ligustrum japonicum	Japanese Privet	Multi, 10' Ht. x 5' Sprd.		
RELOCATED TREES/PALMS	CODE	QTY	BOTANICAL NAME	COMMON NAME	SPECIFICATIONS	REMARKS	
	R-LCX	2	Livistona chinensis	Relocated Chinese Fan Palm	RELOCATED PALM		
	R-PCX	1	Phoenix canariensis	Relocated Canary Island Date Palm	RELOCATED PALM		
SHRUBS	CODE	QTY	BOTANICAL NAME	COMMON NAME	SPECIFICATIONS	REMARKS	
	CLG	42	Clusia guttifera	Small Leaf Clusia	48" HT. X 36" SPRD.		
	COS	44	Conocarpus erectus sericeus	Silver Buttonwood	36" HT. X 36" SPRD.		
	PLA	38	Plumbago auriculata 'Imperial Blue'	Blue Plumbago	24" HT. X 24" SPRD.		
	SER	42	Serenoa repens 'Cinerea'	Silver Saw Palmetto	36" HT. X 36" SPRD.		
	TRD	29	Tripsacum dactyloides	Fakahatchee Grass	30" HT. X 30" SPRD.		
SHRUB AREAS	CODE	QTY	BOTANICAL NAME	COMMON NAME	SPECIFICATIONS	SPACING	REMARKS
	FMG	50	Ficus microcarpa 'Green Island'	Green Island Ficus	15" HT. X 15" SPRD.	20' o.c.	
	HED	119	Helianthus debilis	Dune Sunflower	12" HT. X 12" SPRD.	15' o.c.	
GROUND COVERS	CODE	QTY	BOTANICAL NAME	COMMON NAME	SPECIFICATIONS	SPACING	REMARKS
	SOD	888 sf	Stenotaphrum secundatum	St. Augustine Grass	SOD		



DATE:	SCALE:	DESIGN BY:	DRAWN BY:	CHECKED BY:	APPROVED BY:
09/09/2020	AS NOTED	NDP	NDP	NDP	NDP

CRAVEN - THOMPSON AND ASSOCIATES, INC.
 ENGINEERS • PLANNERS • SURVEYORS
 35653 N.W. 53RD STREET, FORT LAUDERDALE, FLORIDA, 33309
 FAX: (954) 739-6409 TEL: (954) 739-6400
 FLORIDA LICENSED ENGINEERS, SURVEYORS & PLANNERS BUSINESS NO. 771
 FLORIDA LICENSED LANDSCAPE ARCHITECTURE BUSINESS NO. C000114
 CRAVEN - THOMPSON AND ASSOCIATES, INC. © 2020
MATERIAL SHOWN HEREIN IS THE PROPERTY OF CRAVEN, THOMPSON & ASSOCIATES, INC. AND SHALL NOT BE REPRODUCED OR TRANSMITTED IN ANY FORM OR BY ANY MEANS, ELECTRONIC OR MECHANICAL, WITHOUT PERMISSION IN WRITING FROM CRAVEN, THOMPSON & ASSOCIATES, INC.

**INDIAN CREEK LANDSCAPE
 27TH STREET GENERATOR
 LANDSCAPE PLAN**

PREPARED FOR:
CITY OF MIAMI BEACH

Scott W. Peavler
 Florida R.L.A. No. 6666976
 September 9, 2020
 PROJECT NO.
18-0043-001-01

LP-1
 SHEET 2 OF 3

EXISTING CONDITIONS



PROPOSED LANDSCAPE



R:\Landscape\2018\18-0043-001-01 Indian Creek Greenway\Drawings\18-0043-001-01_LP - Generator.dwg [LD-3] Sep 18, 2020 3:54pm SPEAVLER

DATE:	09/21/20
SCALE:	AS NOTED
DESIGN BY:	NDP
DRAWN BY:	NDP
CHECKED BY:	SWP
APPROVED BY:	SWP

Craven • Thompson and Associates, Inc.
 ENGINEERS • PLANNERS • SURVEYORS
 3563 N.W. 53RD STREET, FORT LAUDERDALE, FLORIDA 33309
 FAX: (954) 739-6409 TEL: (954) 739-6400
 FLORIDA LICENSED ENGINEERING, SURVEYING & MAPPING BUSINESS NO. 271
 FLORIDA LICENSED LANDSCAPE ARCHITECTURE BUSINESS NO. C000114

ALL MATERIALS SHOWN HEREON ARE THE PROPERTY OF CRAVEN THOMPSON & ASSOCIATES, INC. AND SHALL NOT BE REPRODUCED OR TRANSMITTED IN ANY FORM OR BY ANY MEANS, ELECTRONIC OR MECHANICAL, INCLUDING PHOTOCOPYING, RECORDING, OR BY ANY INFORMATION STORAGE AND RETRIEVAL SYSTEM, WITHOUT THE WRITTEN PERMISSION OF CRAVEN THOMPSON & ASSOCIATES, INC. COPYRIGHT © 2019

**INDIAN CREEK GREENWAY
 27TH STREET GENERATOR
 MIAMI BEACH, FLORIDA**

PREPARED FOR:
CITY OF MIAMI BEACH

LANDSCAPE SIMULATION

Scott W. Peavler
 Florida R.L.A. No. 6666976
 September 18, 2020

PROJECT NO.
18-0043-001-01

LD-3
 SHEET 3 OF 3