

IN-SITE DESIGN GROUP LLC

1546 JACKSON STREET
HOLLYWOOD, FL 33020
AA26001758
WWW.IN-SITEDESIGNGROUP.COM
954 921 5333

ANNIE K. CARRUTHERS
ARCHITECT

THESE DESIGNS AND DRAWINGS ARE THE
UNPUBLISHED PROPERTY OF IN-SITE DESIGN GROUP
LLC AND MAY NOT BE REPRODUCED EXCEPT WITH
WRITTEN CONSENT OF THE COMPANY. THE
CONTRACTOR MUST CHECK AND VERIFY ALL
DIMENSIONS OF THE JOB AND BE RESPONSIBLE FOR
SAME. REPORTING ANY DISCREPANCIES TO THE
ARCHITECT BEFORE COMMENCEMENT OF WORK.
DRAWINGS ARE NOT TO BE SCALED.

MAICAR REALTY RESIDENCE

OWNER:
AZENDA PROPERTIES, LLC

ADDRESS:
205 EAST SAN MARINO DR
MIAMI BEACH FL 33139

DISTRIBUTION

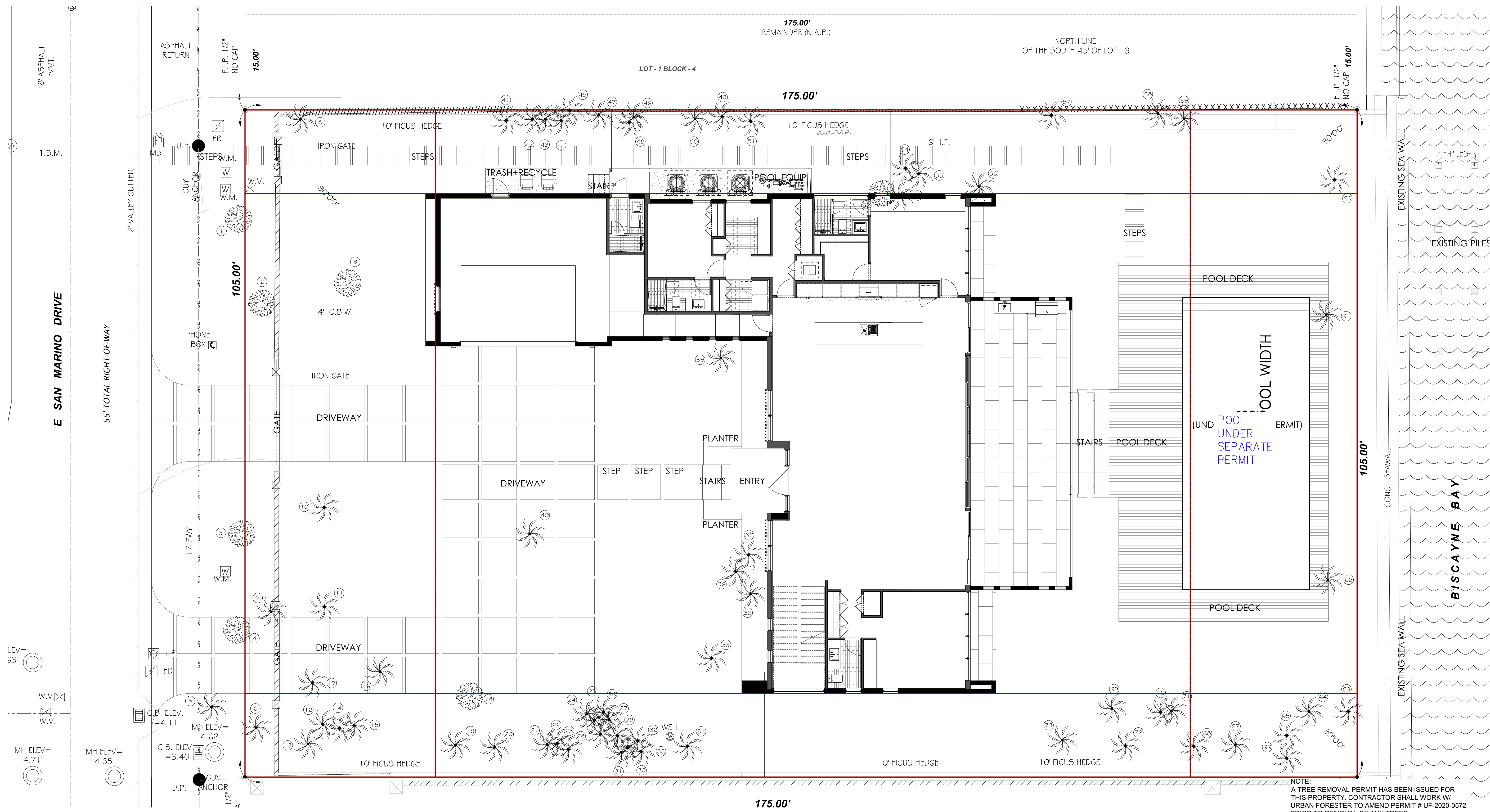
REVISIONS

DATE OF ISSUE
12-14-2020

SHEET NAME
TREE
DISPOSITION

SHEET NUMBER

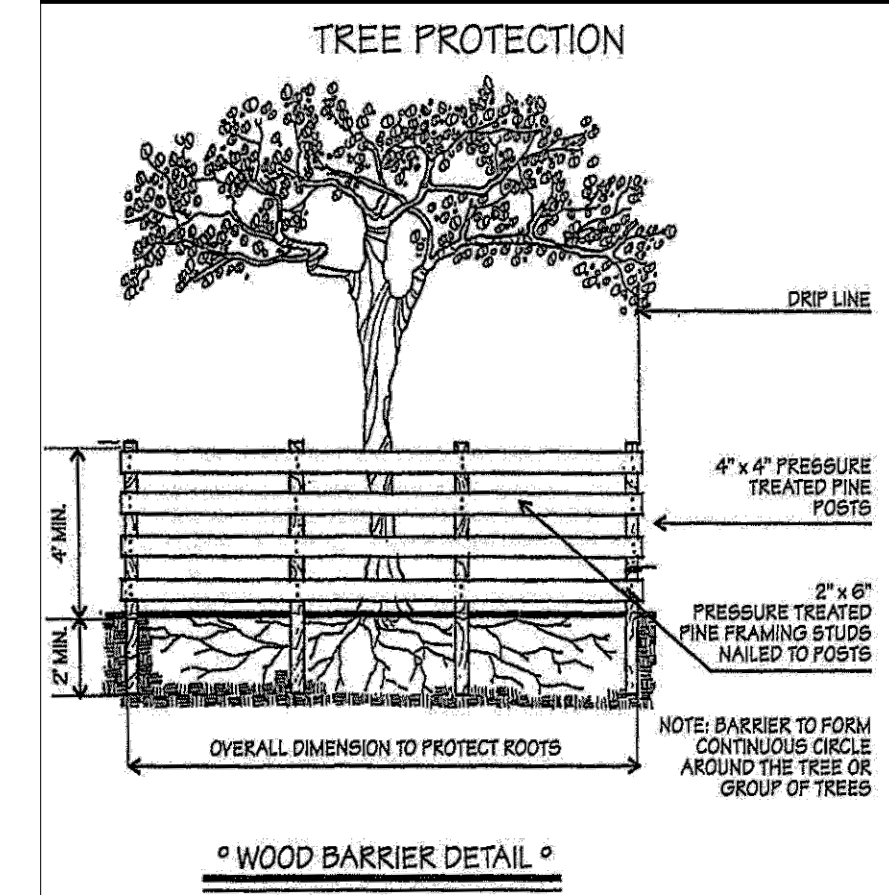
TD-1



| TREE TABLE | | | | | |
|------------|------------------|--------------------|------------------|------------------|-------------|
| No. | Name | Diameter (P.I.) | Height (P.I.) | Spread (P.I.) | Disposition |
| 1 | LEGASTROM | 1.00 | 8 | 6 | Remove |
| 2 | LEGASTROM | 0.50 | 8 | 6 | Remove |
| 3 | LEGASTROM | 1.00 | 8 | 6 | Remove |
| 4 | LEGASTROM | 1.00 | 8 | 6 | Remove |
| 5 | ROBELINI PALM(2) | 0.40 | 15 | 8 | Remove |
| 6 | ROYAL PALM | 1.60 | 40 | 20 | Remove |
| 7 | ALEXANDER PALM | 0.30 | 15 | 6 | Remove |
| 8 | ROYAL PALM | 1.40 | 50 | 20 | Remove |
| 9 | MAHOGANY TREE | 4.00 | 40 | 40 | Remove |
| 10 | ROYAL PALM | 1.40 | 40 | 20 | Remove |
| 11 | ROYAL PALM | 1.40 | 40 | 20 | Remove |
| 12 | ALEXANDER PALM | 0.25 | 25 | 8 | Remove |
| 13 | ALEXANDER PALM | 0.25 | 20 | 8 | Remove |
| 14 | SABAL PALM | 1.00 | 20 | 12 | Remove |
| 15 | SABAL PALM (2) | 0.80 | 30 | 15 | Remove |
| 16 | ROBELINI PALM(2) | 0.30 | 10 | 6 | Remove |
| 17 | ROBELINI PALM(2) | 0.30 | 10 | 6 | Remove |
| 18 | MANGO TREE | 1.00 | 25 | 20 | Remove |
| 19 | ALEXANDER PALM | 0.70 | 30 | 10 | Remove |
| 20 | ALEXANDER PALM | 0.70 | 30 | 10 | Remove |
| 21 | TRAVELERS PALM | 0.80 | 30 | 12 | Remove |
| 22 | TRAVELERS PALM | 0.80 | 30 | 12 | Remove |
| 23 | TRAVELERS PALM | 0.80 | 30 | 12 | Remove |
| 24 | TRAVELERS PALM | 0.80 | 30 | 15 | Remove |
| 25 | TRAVELERS PALM | 0.80 | 30 | 15 | Remove |

| TREE TABLE | | | | | |
|------------|--------------------|--------------------|------------------|------------------|-------------|
| No. | Name | Diameter (P.I.) | Height (P.I.) | Spread (P.I.) | Disposition |
| 26 | TRAVELERS PALM | 0.80 | 25 | 12 | Remove |
| 27 | TRAVELERS PALM | 0.80 | 30 | 15 | Remove |
| 28 | TRAVELERS PALM | 0.80 | 25 | 12 | Remove |
| 29 | TRAVELERS PALM | 0.80 | 30 | 15 | Remove |
| 30 | TRAVELERS PALM | 0.80 | 30 | 15 | Remove |
| 31 | TRAVELERS PALM | 0.80 | 30 | 15 | Remove |
| 32 | TRAVELERS PALM | 0.80 | 30 | 15 | Remove |
| 33 | TRAVELERS PALM | 0.80 | 30 | 15 | Remove |
| 34 | ALEXANDER PALM | 0.60 | 30 | 12 | Remove |
| 35 | ARECA PALM | 3.00 | 20 | 15 | Remove |
| 36 | ALEXANDER PALM | 0.60 | 30 | 15 | Remove |
| 37 | TRAVELERS PALM (5) | 0.40 | 25 | 8 | Remove |
| 38 | TRAVELERS PALM (3) | 0.40 | 20 | 10 | Remove |
| 39 | ALEXANDER PALM (6) | 0.20 | 25 | 8 | Remove |
| 40 | PALMS (8) | 0.50 | 30 | 10 | Remove |
| 41 | ROYAL PALM | 1.00 | 25 | 12 | Remove |
| 42 | ROYAL PALM | 0.60 | 20 | 12 | Remove |
| 43 | ROYAL PALM | 0.60 | 20 | 15 | Remove |
| 44 | ROYAL PALM | 1.00 | 25 | 18 | Remove |
| 45 | ROYAL PALM | 1.60 | 50 | 15 | Remove |
| 46 | ROYAL PALM | 1.00 | 25 | 15 | Remove |
| 47 | ROYAL PALM | 0.50 | 20 | 15 | Remove |
| 48 | ROYAL PALM | 0.50 | 20 | 12 | Remove |
| 49 | ROYAL PALM | 0.50 | 20 | 15 | Remove |
| 50 | ROYAL PALM | 0.60 | 20 | 15 | Remove |

| TREE TABLE | | | | | |
|------------|-------------------|--------------------|------------------|------------------|-------------|
| No. | Name | Diameter (P.I.) | Height (P.I.) | Spread (P.I.) | Disposition |
| 51 | ROYAL PALM | 0.80 | 25 | 15 | Remove |
| 52 | DRACAEIA | 0.80 | 20 | 12 | Remove |
| 53 | ALEXANDER PALM | 0.40 | 30 | 10 | Remove |
| 54 | ALEXANDER PALM | 0.50 | 30 | 10 | Remove |
| 55 | ALEXANDER PALM | 0.50 | 30 | 10 | Remove |
| 56 | ROBELINI PALM (3) | 0.30 | 15 | 8 | Remove |
| 57 | ALEXANDER PALM | 0.50 | 30 | 10 | Remove |
| 58 | ALEXANDER PALM | 0.40 | 15 | 8 | Remove |
| 59 | ALEXANDER PALM | 0.40 | 15 | 8 | Remove |
| 60 | ROYAL PALM | 1.40 | 30 | 20 | Remove |
| 61 | ROYAL PALM | 1.40 | 30 | 20 | Remove |
| 62 | ROYAL PALM | 1.40 | 30 | 20 | Remove |
| 63 | COCONUT PALM | 0.70 | 30 | 15 | Remove |
| 64 | COCONUT PALM | 0.70 | 30 | 15 | Remove |
| 65 | COCONUT PALM | 0.70 | 30 | 15 | Remove |
| 66 | COCONUT PALM | 0.70 | 35 | 15 | Remove |
| 67 | ALEXANDER PALM | 0.50 | 35 | 15 | Remove |
| 68 | ALEXANDER PALM | 0.50 | 35 | 15 | Remove |
| 69 | ALEXANDER PALM | 0.50 | 35 | 15 | Remove |
| 70 | ALEXANDER PALM | 0.70 | 35 | 15 | Remove |
| 71 | ALEXANDER PALM | 0.70 | 35 | 15 | Remove |
| 72 | ALEXANDER PALM | 0.50 | 35 | 15 | Remove |
| 73 | ALEXANDER PALM | 0.50 | 35 | 15 | Remove |



NOTE:
A TREE REMOVAL PERMIT HAS BEEN ISSUED FOR
THIS PROPERTY. CONTRACTOR SHALL WORK W/
URBAN FORESTER TO AMEND PERMIT # UF-2020-0572
PRIOR TO REMOVAL OF ANY TREES.

