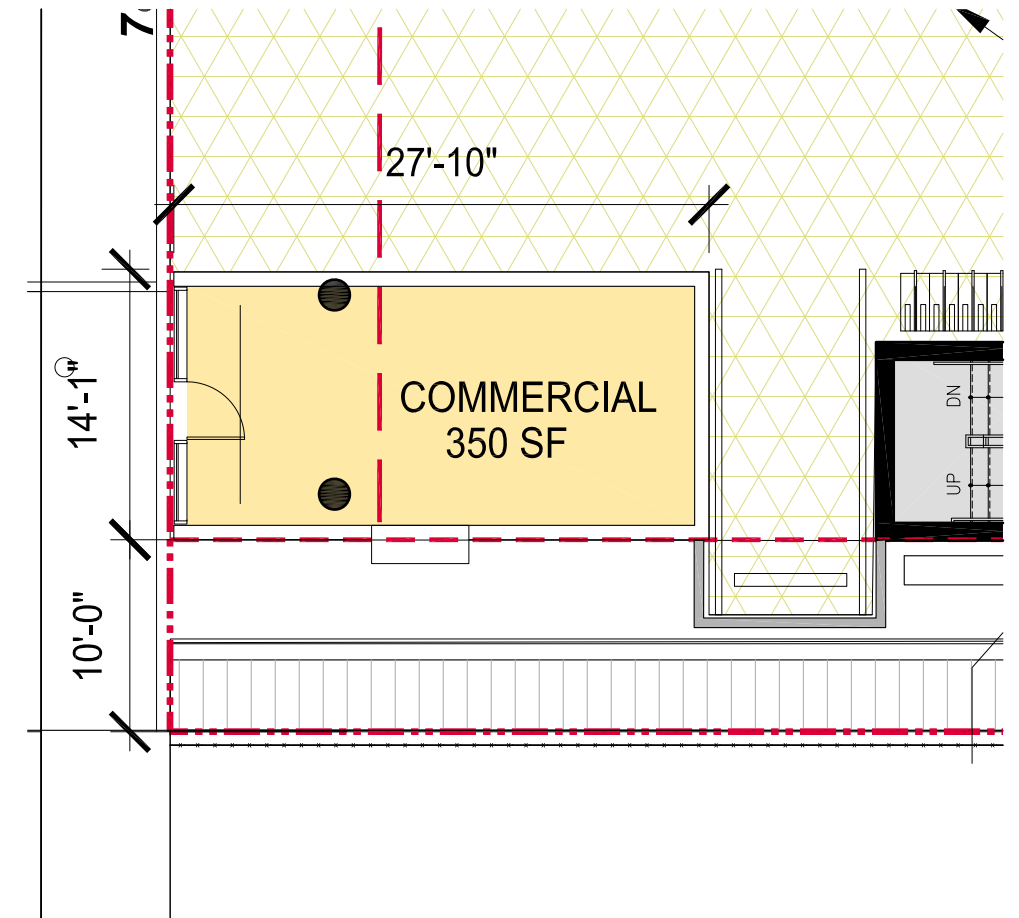


REVISED 2.12.21

BUILT FORM
ARCHITECTURE

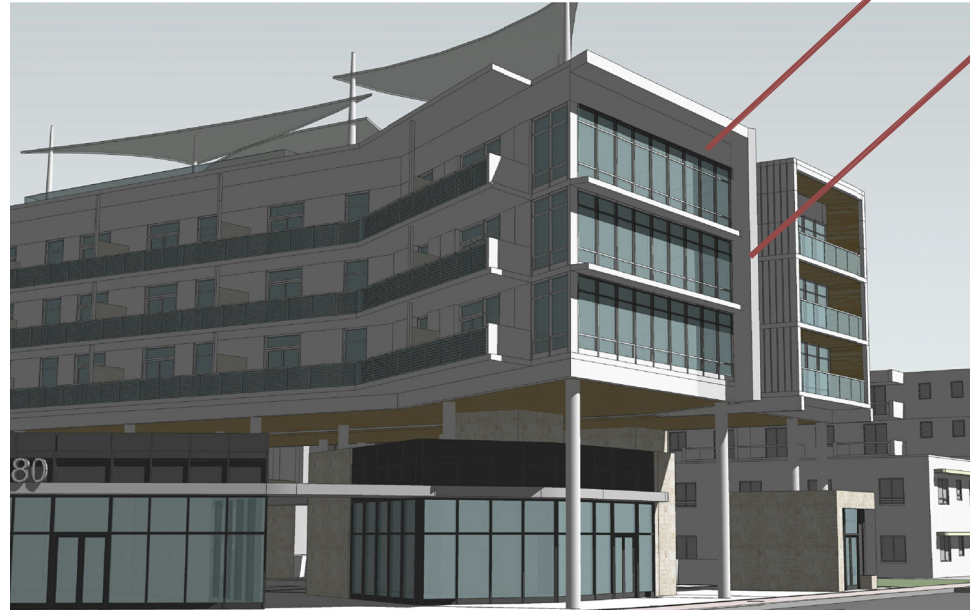


VIEW OF SOUTH WEST CORNER

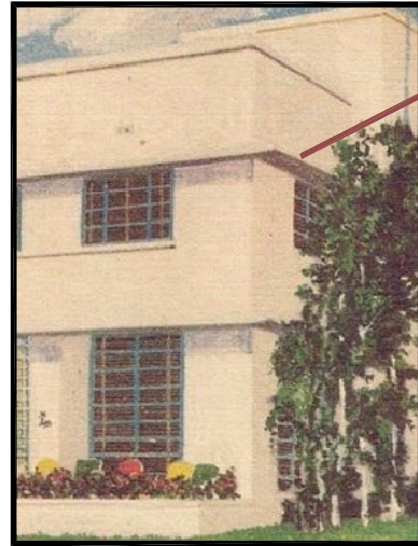


REVISED RETAIL- 350 SF

REVISED 2.12.21



EYEBROW SLAB EDGE FOR HIGHER SUN ANGLES
ADDITIONAL VERTICAL FIN FOR WESTERN EXPOSURE



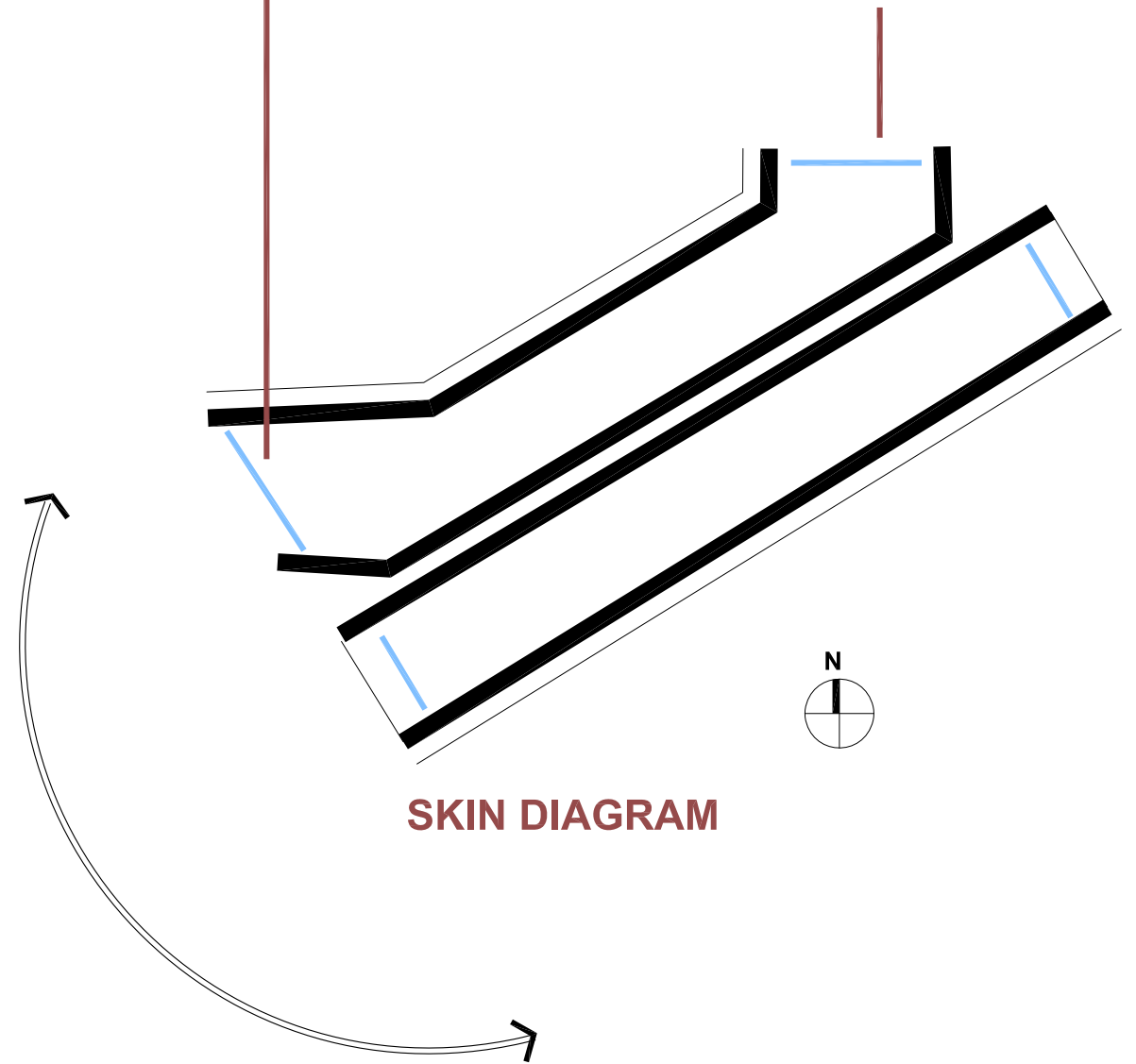
EYEBROW SLAB EDGE SIMILAR TO TROPICAIR

THESE LIMITED FLOOR TO CEILING GLAZED ZONES TO HAVE HIGH-PERFORMING INSULATING / COATED WINDOW WALL TO MEET ENERGY CODE PERFORMANCE / LEED GOLD

PROPOSED CHANGE



HPB SUBMITTAL



SKIN DIAGRAM

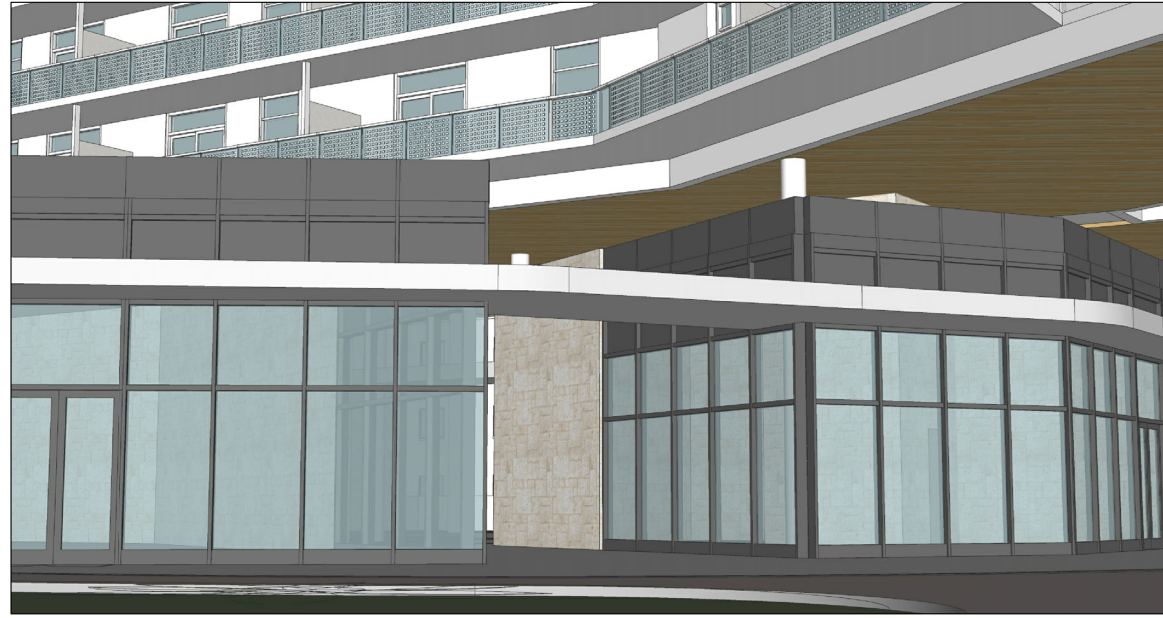
REVISED 2.12.21



THE ORIGINAL TROPICAIRE SIGN WAS 4'6" X 24'

WE ARE PROPOSING TO LOCATE ON THE NORTH FACADE
WITH THE ORIGINAL ORIENTATION TO THE STREET AND WITH
THE ORIGINAL LAYERED PANEL DETAIL
THE PROPOSED BUILDING IDENTITY SIGN TO BE DETERMINED

REVISED 2.12.21



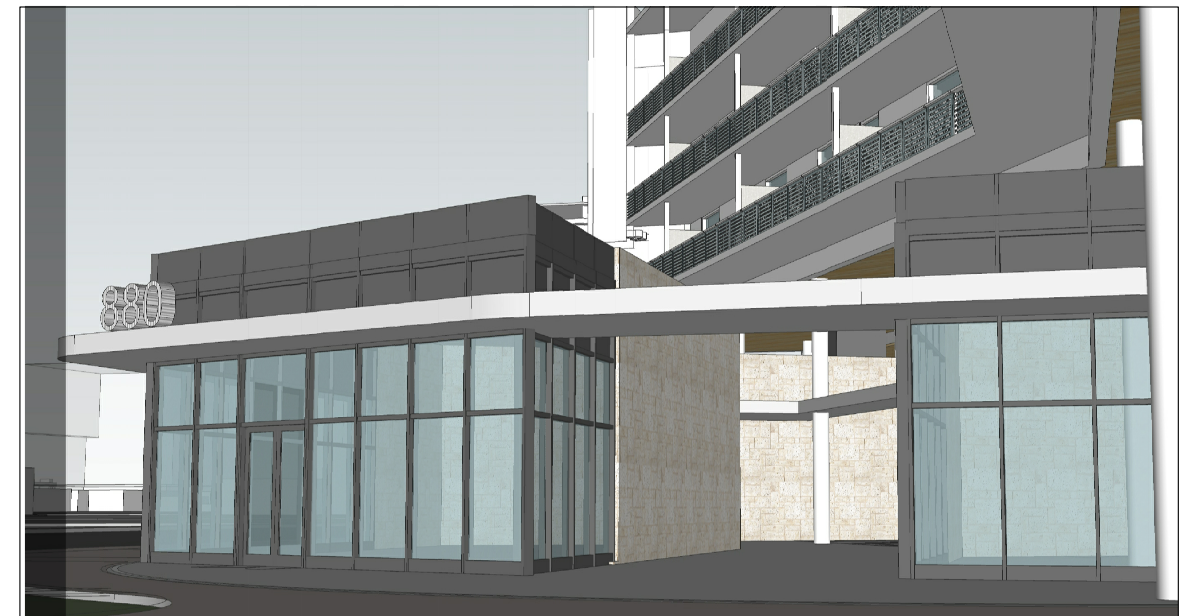
VIEW FROM CORNER



VIEW FROM 71 st STREET



VIEW FROM 71 st STREET



VIEW FROM CORNER

REVISED 2.12.21