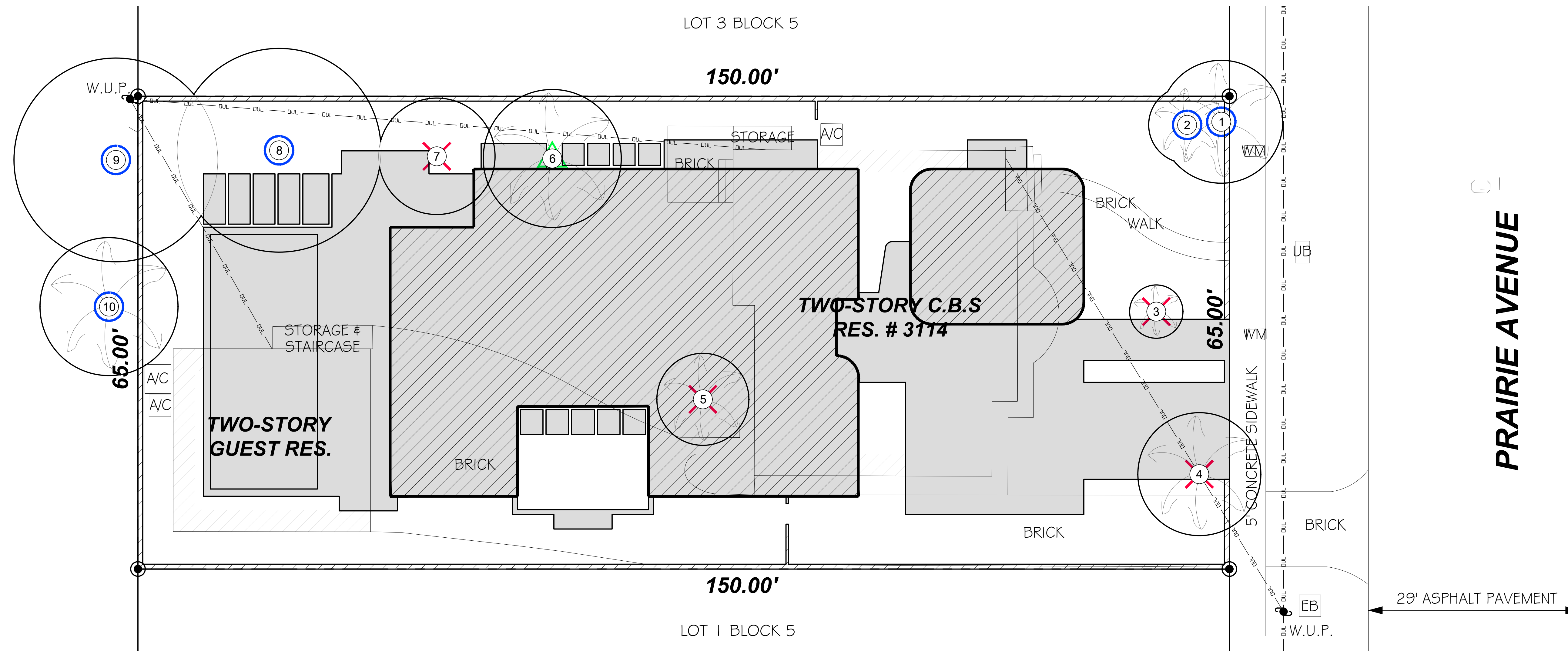


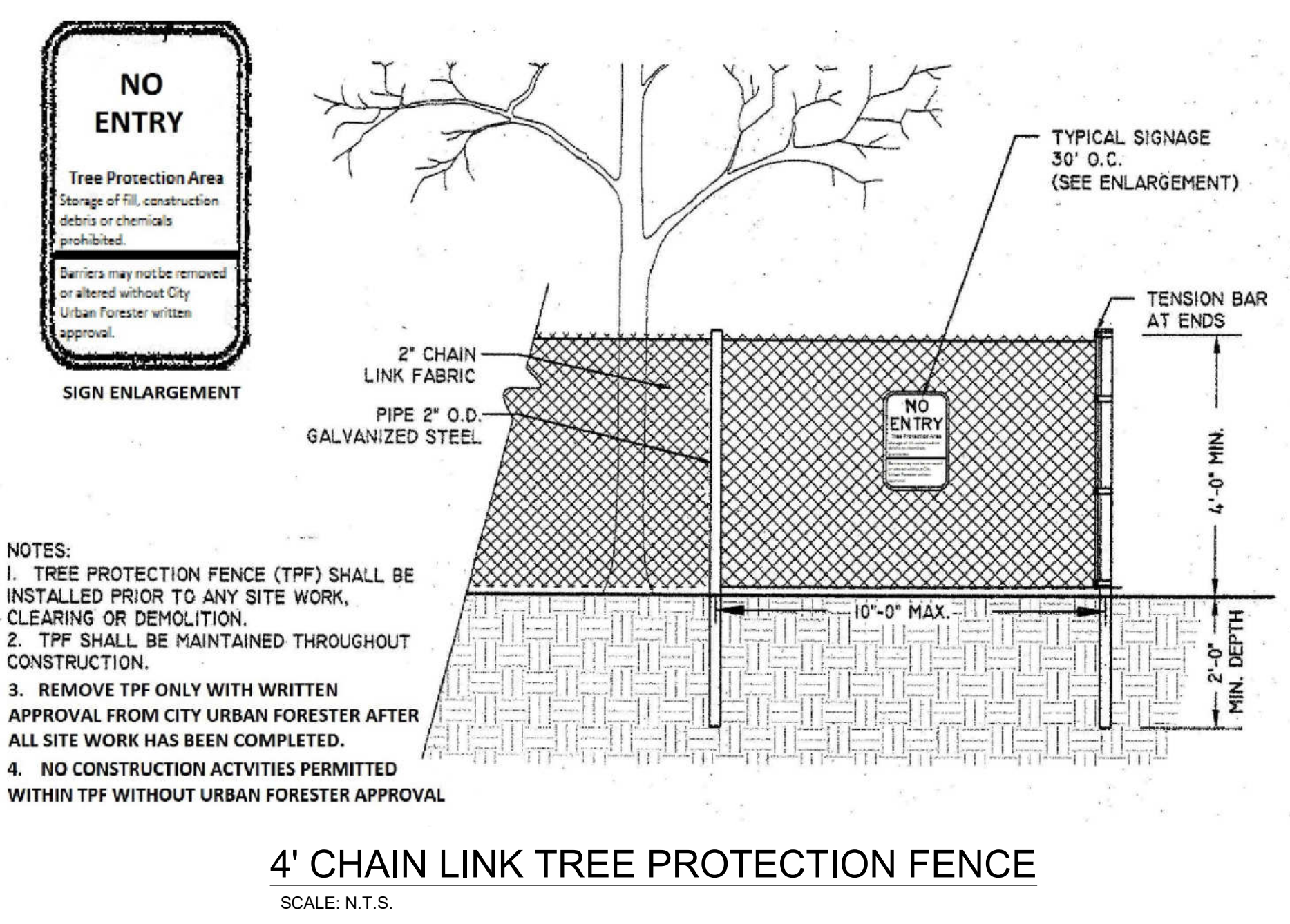
BAYSHORE GOLF COURSE



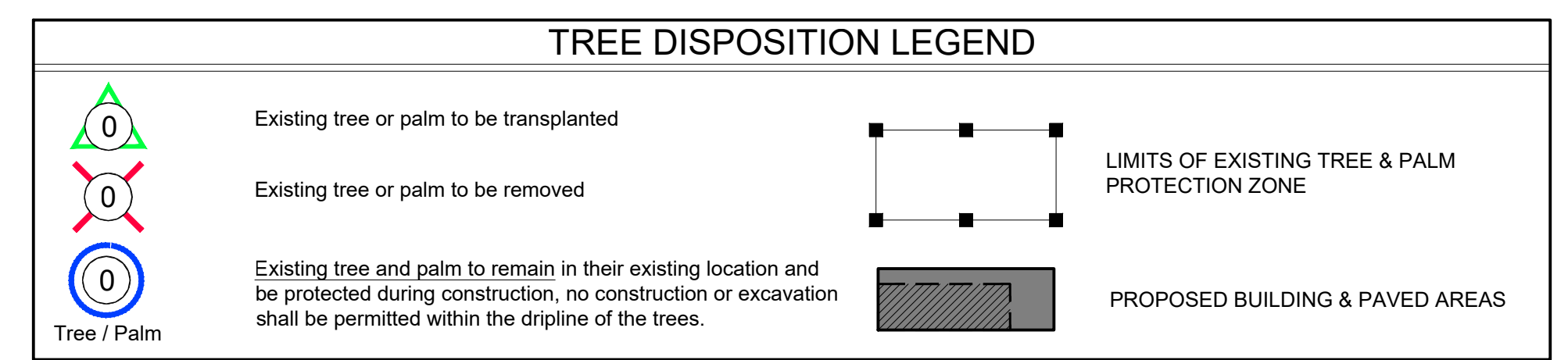
Sunshine811
 Call 811 or www.sunshine811.com two full business days before digging to have utilities located and marked.
 Check positive response codes before you dig!

EXISTING TREE DISPOSITION PLAN
 SCALE: 0 8 16 24 feet
 1/8" = 1'-0"

| TREE REPLACEMENT CHART | | |
|--|--|---|
| Total diameter of tree(s) to be removed (sum of inches at DBH) | Total # of replacement trees required (2" DBH minimum each: 12' min. OA) | OR Total # of replacement trees required (4" DBH minimum each: 16' min. OA) |
| 2"-3" | 1 | or 0 |
| 4"-6" | 2 | or 1 |
| 7"-12" x 1 | 4 x 1 = 4 | or 2 x 1 = 2 |
| 13"-18" | 6 | or 3 |
| 19"-24" | 8 | or 4 |
| 25"-30" | 10 | or 5 |
| 31"-36" | 12 | or 6 |
| 37"-42" | 14 | or 7 |
| 43"-48" | 16 | or 8 |
| 49"-60" | 20 | or 10 |
| TOTAL: 12" | Total: 4 Trees Provided: 13 | or Total: 2 Trees Provided: 0 |



| EXISTING TREE DISPOSITION LIST | | | | | | | | | | |
|--------------------------------|-------------------------------|---------------------|---------------------|-------------|----------------------|----------------------------------|-----------|-------------|---------------------------|------------------------------|
| No. | Scientific Name | Common Name | Diameter / DBH (in) | Height (ft) | Spread / Canopy (ft) | Tree Protection Zone (ft) Radius | Condition | Disposition | Mitigation (in) | Comments |
| 1 | <i>Livistona chinensis</i> | Chinese Fan Palm | 3 x 8 | 18 | 16 | 3 | Good | Remain | 0 | Triple |
| 2 | <i>Livistona chinensis</i> | Chinese Fan Palm | 8 | 16 | 8 | 3 | Good | Remain | 0 | Single |
| 3 | <i>Phoenix roebellii</i> | Pygmy Date Palm | 2 x 4 | 12 | 7 | 0 | Poor | Remove | 1 Tree / Palm | Double |
| 4 | <i>Livistona chinensis</i> | Chinese Fan Palm | 3 x 8 | 14 | 16 | 0 | Good | Remove | 1 Tree / Palm | Triple |
| 5 | <i>Veitchia merrillii</i> | Christmas Palm | 6 + 4 + 5 | 24 | 12 | 0 | Poor | Remove | 1 Tree / Palm | Triple |
| 6 | <i>Cocos nucifera</i> | Coconut Palm | 10 | 26 | 18 | 3 | Good | Transplant | 0 | |
| 7 | <i>Araucaria heterophylla</i> | Norfolk Island pine | 12 | 26 | 16 | 0 | Fair | Remove | 12 | |
| 8 | <i>Mangifera indica</i> | Mango | 30 | 30 | 28 | 20 | Good | Remain | 0 | |
| 9 | <i>Persea americana</i> | Avocado | 30 | 30 | 28 | 20 | Good | Remain | 0 | Tree on neighboring property |
| 10 | <i>Cocos nucifera</i> | Coconut Palm | 10 | 26 | 18 | 3 | Good | Remain | 0 | Tree on neighboring property |
| Total to Mitigate (in) | | | | | | | | | 12 + 3 Tree / Palm | |



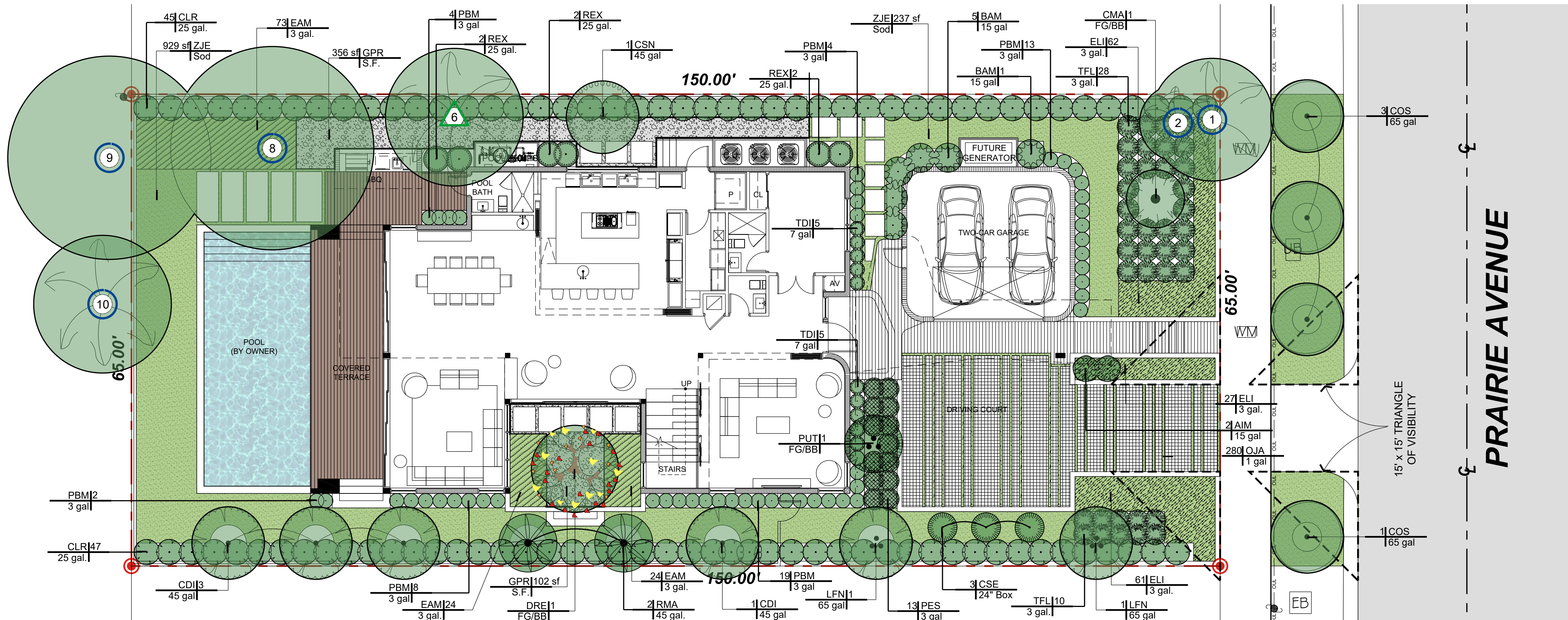
REGISTERED LANDSCAPE ARCHITECT
 DERICK C. LANGEL
 LA 6667045
 STATE OF FLORIDA
 DERICK LANGEL (LA6667045)
 ALL LANDSCAPE DATA, INC.
 www.alllandscapedata.net & .com
 Ph: 305.303.7059

RICHARDSON'S VILLA
 DESIGN REVIEW BOARD SUBMITTAL

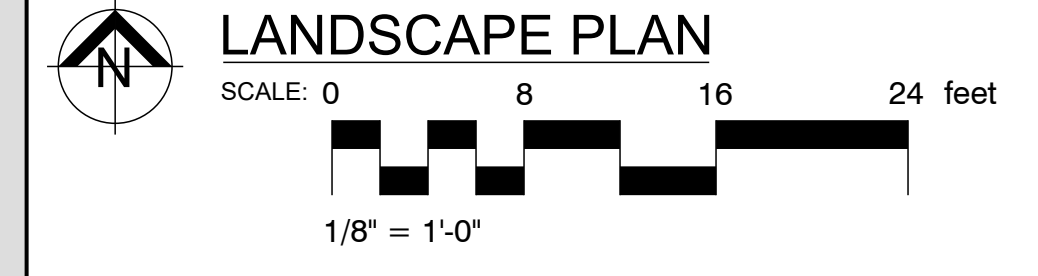
3114 PRAIRIE AVENUE
 MIAMI BEACH, FLORIDA 33140

ATELIER305
 ARCHITECTURE+DESIGN
 Copyright © 2020 ATELIER 305. All rights reserved.

EXISTING TREE DISPOSITION PLAN
 DATE: 12/07/2020
 SCALE: AS SHOWN
L-01



Sunshine811
 Call 811 or www.sunshine811.com two full business days before digging to have utilities located and marked.
 Check positive response codes before you dig!



- GENERAL NOTES**
- Landscape Contractor is responsible for verifying locations of all underground and overhead utilities and easements prior to commencing work. All Utility companies and/or the General Contractor shall be notified to verify utility locations prior to digging. Utility trenching is to be coordinated with the Landscape plans prior to beginning of project. The Owner or Landscape Architect shall not be responsible for damage to utility or irrigation lines.
 - Landscape Contractor shall examine the site and become familiar with conditions affecting the installation prior to submitting bids. Failure to do so shall not be considered cause for future extras or complaints.
 - Landscape Contractor is responsible for verifying all plant quantities prior to bidding and within (7) seven calendar days of receipt of these plans shall notify the Landscape Architect in writing of any and all discrepancies. In case of discrepancies planting plans shall take precedence over plant list.
 - No substitutions shall be made without prior consent of the Landscape Architect, City Urban Forester and or the Planning Department. Plant material supply is the responsibility of the Landscape Contractor, and he/she shall take steps to insure availability at time of planting.
 - All plant material shall meet or exceed the size on the plant list. In all cases meeting the height and the spread specifications shall take precedence over container size.
 - The Landscape Contractor is responsible for coordinating tree and palm removals and transplants shown on the Tree/Palm Disposition Plan. The Landscape Contractor is to remove and discard from site existing unwanted trees, palms, shrubs, groundcovers, sod and weeds within landscape areas.
 - All planted areas to be outlined with automatic irrigation system providing 100% coverage and 50% overlap. A rain sensor must be part of the irrigation system.
 - Landscape contractor to provide finish grade 3" lower than FFE of all hardscapes, i.e. roads, walks, curbs, pavers, etc., to accommodate 3" layer of mulch.
 - All tree and Palm relocations shall be performed in accordance with ANSI A-300 (Part 6) standards and industry accepted good horticultural practices by an ISA Certified Arborist or ASCA Consulting Arborist.
- PLANTING NOTES**
- Landscape Contractor shall furnish and install all trees, palms, shrubs, groundcover, sod, planting soil, fertilizer, herbicide, preemergence herbicide, seed, and mulch.
 - Landscape Contractor shall guarantee all plant material for a period of one year from the day of final acceptance by the Landscape Architect.
 - All plant material shall be Florida #1 or better, as defined in the Grades and Standards for Nursery Plants, Part I and II by the State of Florida Department of Agriculture.
 - Material not meeting Florida #1 or better will not be accepted. Landscape Architect, City Urban Forester and or the Planning Department staff to approve ROW material before it is planted.
 - Landscape Contractor shall coordinate his work with that of the Irrigation and Landscape Lighting Contractor.
 - The Landscape Contractor shall treat plant areas with preemergence herbicide after weeds and grass have been removed. Landscape Contractor shall wait (7) seven days after preemergence treatment prior to planting.
 - Planting soil shall be a mix of 30% in-laid muck and 70% freshwater sand. Planting soil mix/backfill shall be clean and free of construction debris, weeds, rock and noxious pests and disease.
 - All soil mix in plant beds for groundcovers, shrubs, palms and trees shall be as per details. All other areas shall be dressed with a minimum of 4" topsoil.
 - All planting areas and planting pits shall be tested for sufficient percolation prior to final planting and irrigation installation to ensure proper drainage. Plant beds in parking lots and in areas compacted by heavy equipment shall be de-compacted so that drainage is not impeded.
 - All synthetic burlap, string, cords or wire baskets shall be removed before trees are planted. All synthetic tape shall be removed from branches and trunks prior to final acceptance. The top 1/3 of the burlap shall be removed or tucked into the plant pit before the trees are backfilled.
 - Landscape Contractor is responsible for mulching all plant beds and planters with a minimum 3" layer of natural color Eucalyptus or Enviro-mulch immediately after planting. In no case shall Cypress or red mulch be used. Mulch shall not be applied within 6" of any tree or palm trunk that are installed or incorporated into the project.
 - All trees/palms in sod areas are to receive a 36"/48" diameter mulched saucer at the base of the trunk respectively.
 - Landscape Contractor shall guy and stake all trees and palms as per specifications and details. No nails, screws or wiring shall penetrate the outer surface of trees and palms. All guying and staking shall be removed twelve months after planting. Exceptions require written authorization from the City Urban Forester.
 - All palm and tree guy wires and bracing are to be flagged for visibility, for their duration. All unattended and unplanted tree pits shall be properly barricaded and flagged during construction.
 - All broken branches and clear trunk branches on street trees are to be pruned according to ANSI A-300 Guidelines for Tree Pruning to min. 2'-0" height clearance to the base of canopy. All tree and root pruning activities shall be performed by ISA Certified Arborist and or ASCA Consulting Arborist in accordance with ANSI A-300 standards and industry accepted good horticultural practices.
 - Landscape Contractor to provide all plants with fertilizer 30 days after installation. Fertilizer shall comply with state fertilizer laws. It shall have a chemical designation as indicated for each type of plant.
 Palms: 12-4-12 N-P-K, Slow Release Palm Special with micronutrients.
 Shrubs, Groundcover and Trees: 6-6-6 N-P-K, with micronutrients.

LANDSCAPE LEGEND

INFORMATION REQUIRED TO BE PERMANENTLY AFFIXED TO PLANS

Zoning District: RS-4 Lot Area: 9,750 SF Acres: 0.22

| REQUIRED/ALLOWED | PROVIDED |
|------------------|----------|
| 2,437.5 SF | 3,748 SF |
| N/A | N/A |
| 2,437.5 SF | 3,748 SF |

OPEN SPACE

A. Square feet of required Open Space as indicated on site plan:
 Lot Area = 9,750 s.f. x 25% = 2,437.5 s.f.

B. Square feet of parking lot open space required as indicated on site plan:
 Number of parking spaces: N/A x 10 s.f. parking space = N/A

C. Total square feet of landscaped open space required: A+B = 2,437.5 SF

LAWN AREA CALCULATION

A. Square feet of landscaped open space required: 2,437.5 SF

B. Maximum lawn area (sod) permitted = 50% x 3,748 s.f. = 1,874 SF

TREES

A. Number of trees required per lot or net lot acre, less existing number of trees meeting minimum requirements = Front yard=2/ Back yard=3
 5 + 4 trees x N/A net lot acres - number of existing trees = 9 (8 + 1 Existing)

B. % Natives required: Number of trees provided x 30% = 3

C. % Low maintenance / drought and salt tolerant required: 5

D. Street Trees (maximum average spacing of 20' o.c.) = 5

E. Street tree species allowed directly beneath power lines: (maximum average spacing of 20' o.c.) = 7

SHRUBS

A. Number of shrubs required: Sum of lot and street trees required x 12 = 156

B. % Native shrubs required: Number of shrubs provided x 50% = 112

LARGE SHRUBS OR SMALL TREES

A. Number of large shrubs or small trees required: Number of required shrubs x 10% = 16

B. % Native large shrubs or small trees required: Number of large shrubs or small trees provided x 50% = 110

PLANT SCHEDULE

| TREES | QTY | BOTANICAL NAME | COMMON NAME | CONT | DBH | HGT | SRD | REMARKS |
|---------------|---|---|-----------------------------|-----------|------------|------------|----------|---|
| CSN | 1 | Citrus sinensis 'Navel' | Orange Tree | 45 gal | 2" | 12'-14' OA | 6' | Edible |
| CDI | 4 | Coccoloba diversifolia | Pigeon Plum | 45 gal | 2" | 12'-14' OA | 6' | Florida Native - Drought Tolerant |
| DRE | 1 | Delonix regia | Royal Poinciana | FG/BB | 4" | 16' OA | 8' | Drought Tolerant |
| LFN | 2 | Lagerstroemia fauriei 'Natchez' | Japanese Crape Myrtle | 65 gal | 3" | 12'-14' OA | 6'-8" | Drought Tolerant - Multi-Trunk |
| PALMS | QTY <th>BOTANICAL NAME</th> <th>COMMON NAME</th> <th>CONT</th> <th>DBH</th> <th>HGT</th> <th>SRD</th> <th>REMARKS</th> | BOTANICAL NAME | COMMON NAME | CONT | DBH | HGT | SRD | REMARKS |
| CMA | 1 | Copernicia macroglossa | Cuban Peticoat Palm | FG/BB | 6" | 8'-10' OA | 6'-8" | |
| COS | 4 | Cordia sebestena | Orange Geiger | 65 gal | 3" | 12'-14' OA | 6'-8" | |
| STREET TREES | QTY <th>BOTANICAL NAME</th> <th>COMMON NAME</th> <th>CONT</th> <th>DBH</th> <th>HGT</th> <th>SRD</th> <th>REMARKS</th> | BOTANICAL NAME | COMMON NAME | CONT | DBH | HGT | SRD | REMARKS |
| SHRUBS | QTY <th>BOTANICAL NAME</th> <th>COMMON NAME</th> <th>CONTAINER</th> <th>HEIGHT</th> <th>SPREAD</th> <th>SPACING</th> <th>REMARKS</th> | BOTANICAL NAME | COMMON NAME | CONTAINER | HEIGHT | SPREAD | SPACING | REMARKS |
| AIM | 2 | Alcantarea imperialis 'Rubra' | Imperial Bromeliad | 15 gal | 3" | 3" | 42" o.c. | Drought Tolerant |
| BAM | 6 | Bambusa malinensis | Seabreeze Bamboo | 15 gal | 14'-16' OA | 4' | 48" o.c. | |
| CLR | 92 | Clusia rosea | Pitch Apple | 25 gal. | 6' OA | 3.5' | 4' | 42" o.c. Shrub Type - Florida Native - Drought Tolerant |
| CSE | 3 | Cupressus sempervirens | Italian Cypress | 24" Box | 12'-14' OA | 2' | 48" o.c. | Specimen quality by Becker Tree Farm & Nursery |
| PUT | 1 | Pandanus utilis | Screw Pine | FG/BB | 12'-14' OA | 8'-10' | As Shown | 96" o.c. Drought Tolerant - Character Plant |
| PES | 13 | Pennisetum setaceum 'Alba' | White Leaved Fountain Grass | 3 gal | 2' | 2' | 36" o.c. | Drought Tolerant |
| PBM | 50 | Philodendron 'Burle Marx' | Philodendron | 3 gal | 1.5" | 2" | 24" o.c. | |
| RMA | 2 | Ravenala madagascariensis | Traveler's Palm | 45 gal. | 12'-14' OA | 8' | 96" o.c. | |
| REX | 6 | Rhapis excelsa | Lady Palm | 25 gal. | 6' OA | 4' | As Shown | 42" o.c. Shade Grown - Character Plant |
| TDI | 10 | Tabernaemontana divaricata 'Pinwheel Jasmine' | Pinwheel Jasmine | 7 gal | 2" | 2" | 24" o.c. | Fragrant Plant |
| TFL | 38 | Tripsacum floridanum | Florida Gamagrass | 3 gal. | 2' | 2' | 36" o.c. | Florida Native - Drought Tolerant |
| GROUND COVERS | QTY <th>BOTANICAL NAME</th> <th>COMMON NAME</th> <th>CONTAINER</th> <th>HEIGHT</th> <th>SPREAD</th> <th>SPACING</th> <th>REMARKS</th> | BOTANICAL NAME | COMMON NAME | CONTAINER | HEIGHT | SPREAD | SPACING | REMARKS |
| EAM | 121 | Epipremnum aureum 'Marble Queen' | Marble Queen Pothos | 3 gal. | 6" | 18" | 18" o.c. | |
| ELI | 150 | Ernodea littoralis | Golden Creeper | 3 gal. | 12" | 18" | 18" o.c. | |
| GPR | 378 sf | 3/8" Pea Rock | 3/8" Pea Rock | S.F. | | | | 3" Layer |
| OJA | 280 | Ophiopogon japonicus | Mondo Grass | 1 gal | 6" OA | 12" | 8" o.c. | |
| ZJE | 1,198 sf | Zoysia japonica 'Empire' | Korean Grass | Sod | | | | |

EXISTING TREE LIST

| No. | Scientific Name | Common Name |
|-----|----------------------------|------------------|
| 1 | <i>Livistona chinensis</i> | Chinese Fan Palm |
| 2 | <i>Livistona chinensis</i> | Chinese Fan Palm |
| 6 | <i>Cocos nucifera</i> | Coconut Palm |
| 8 | <i>Mangifera indica</i> | Mango |
| 9 | <i>Persea americana</i> | Avocado |
| 10 | <i>Cocos nucifera</i> | Coconut Palm |

EXISTING TREES

0 The Existing trees or palms transplanted, new location

0 The Existing trees and palms that remained in their original location

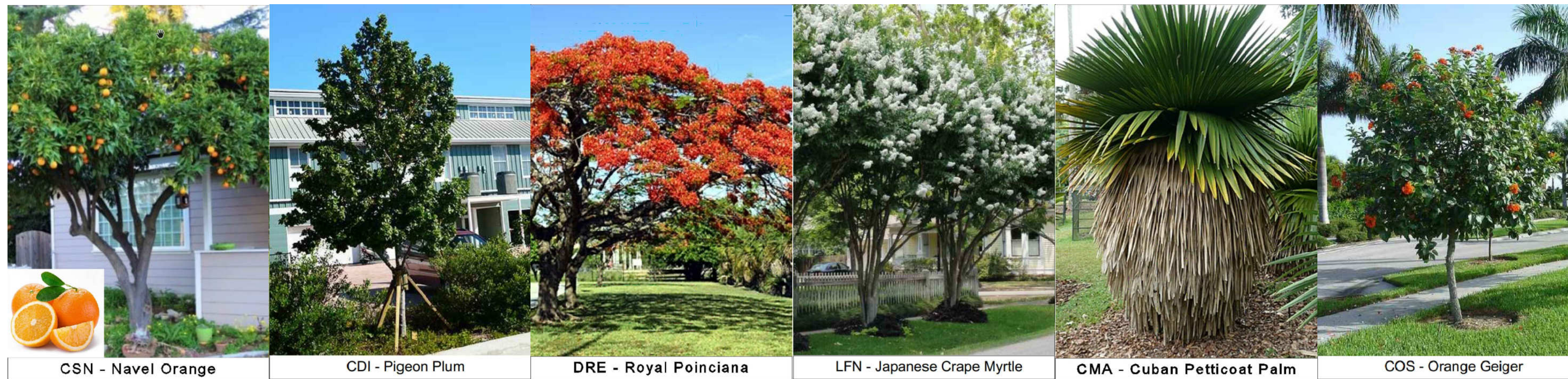


RICHARDSON'S VILLA
 DESIGN REVIEW BOARD SUBMITTAL

3114 PRAIRIE AVENUE
 MIAMI BEACH, FLORIDA 33140

ATELIER305
 ARCHITECTURE+DESIGN
 Copyright © 2020 ATELIER 305. All rights reserved.

LANDSCAPE PLAN
 DATE: 12/07/2020
 SCALE: AS SHOWN
L-02



CSN - Navel Orange

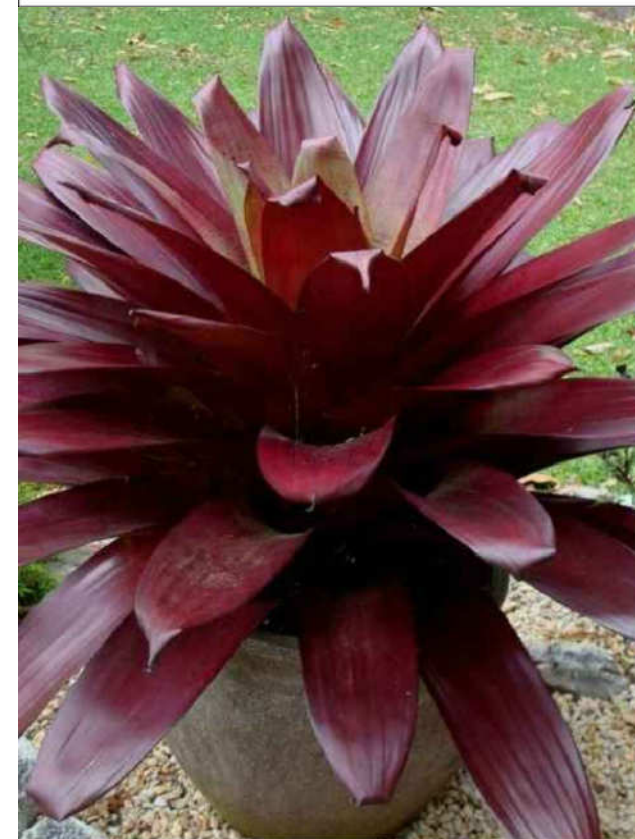
CDI - Pigeon Plum

DRE - Royal Poinciana

LFN - Japanese Crape Myrtle

CMA - Cuban Petticoat Palm

COS - Orange Geiger



AIM - Imperial Bromeliad



BAM - Seabreeze Bamboo



CLR - Pitch Apple



CSE - Italian Cypress



PUT - Screw Pine



PES - White Leaved Fountain Grass



PBM - Philodendron



RMA - Traveler's Tree



REX - Lady Palm



TDI - Pinwheel Jasmine



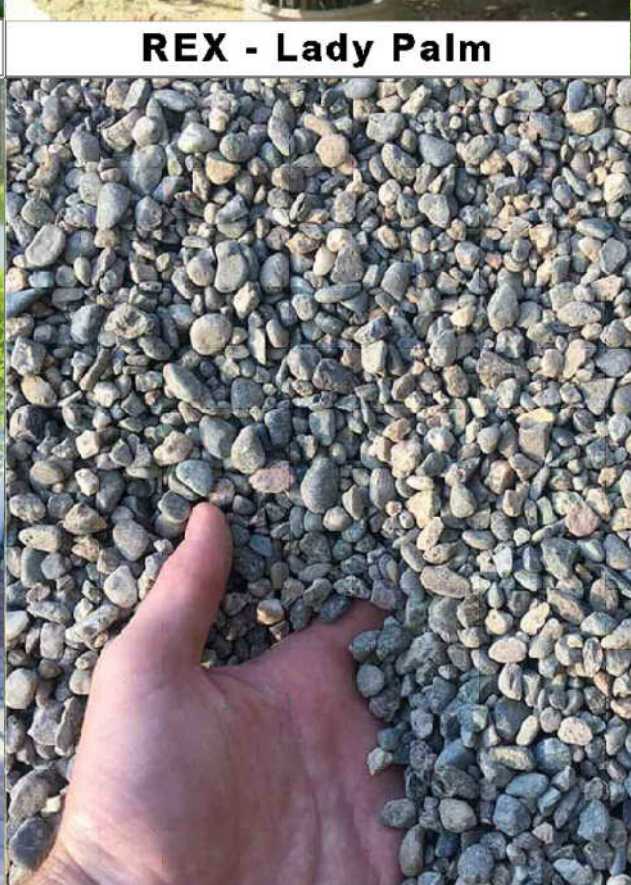
TFL - Florida Gamagrass



EAM - Marble Queen Pothos



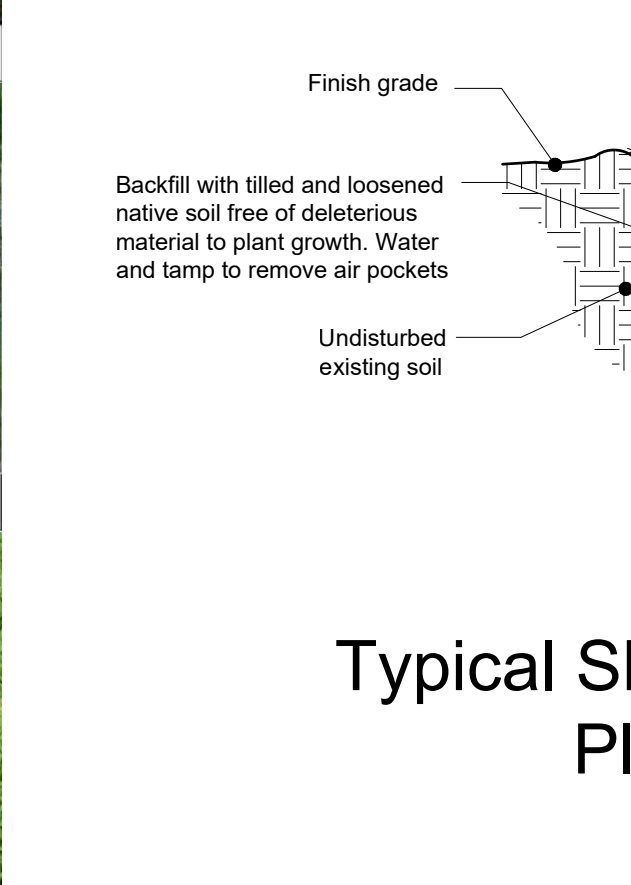
ELI - Golden Creeper



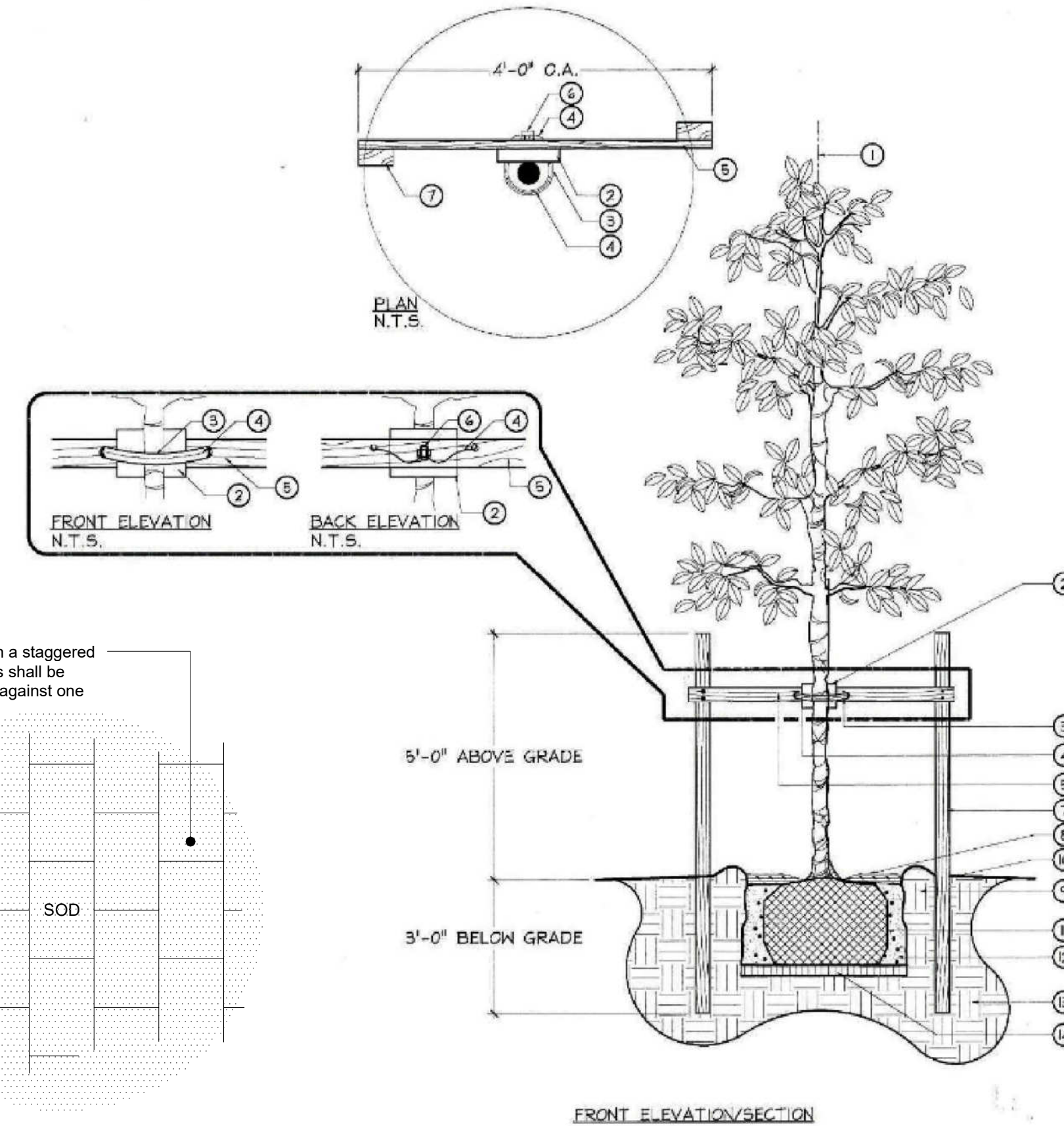
GPR - 3/8" Gray Pea Rock



OJA - Mondo Grass

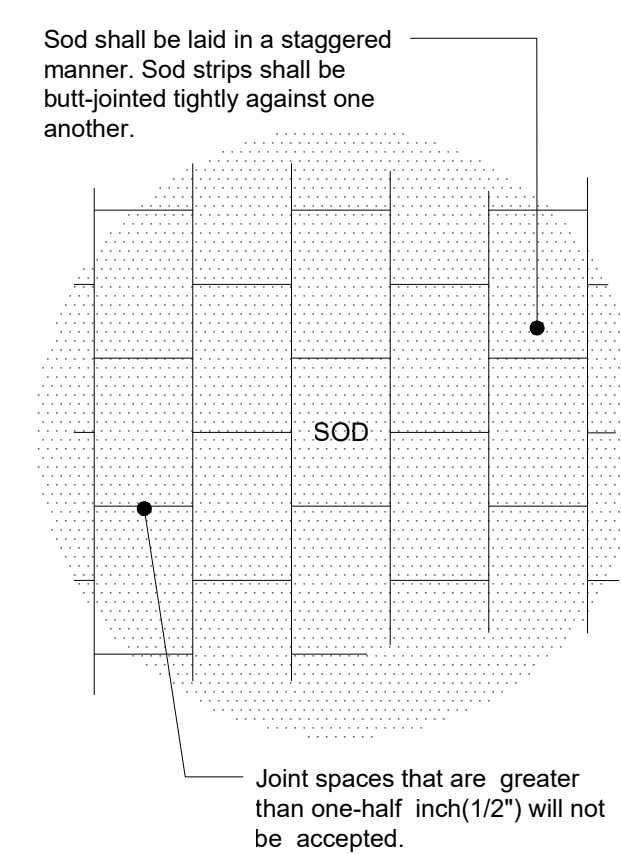


ZJE - Korean Grass

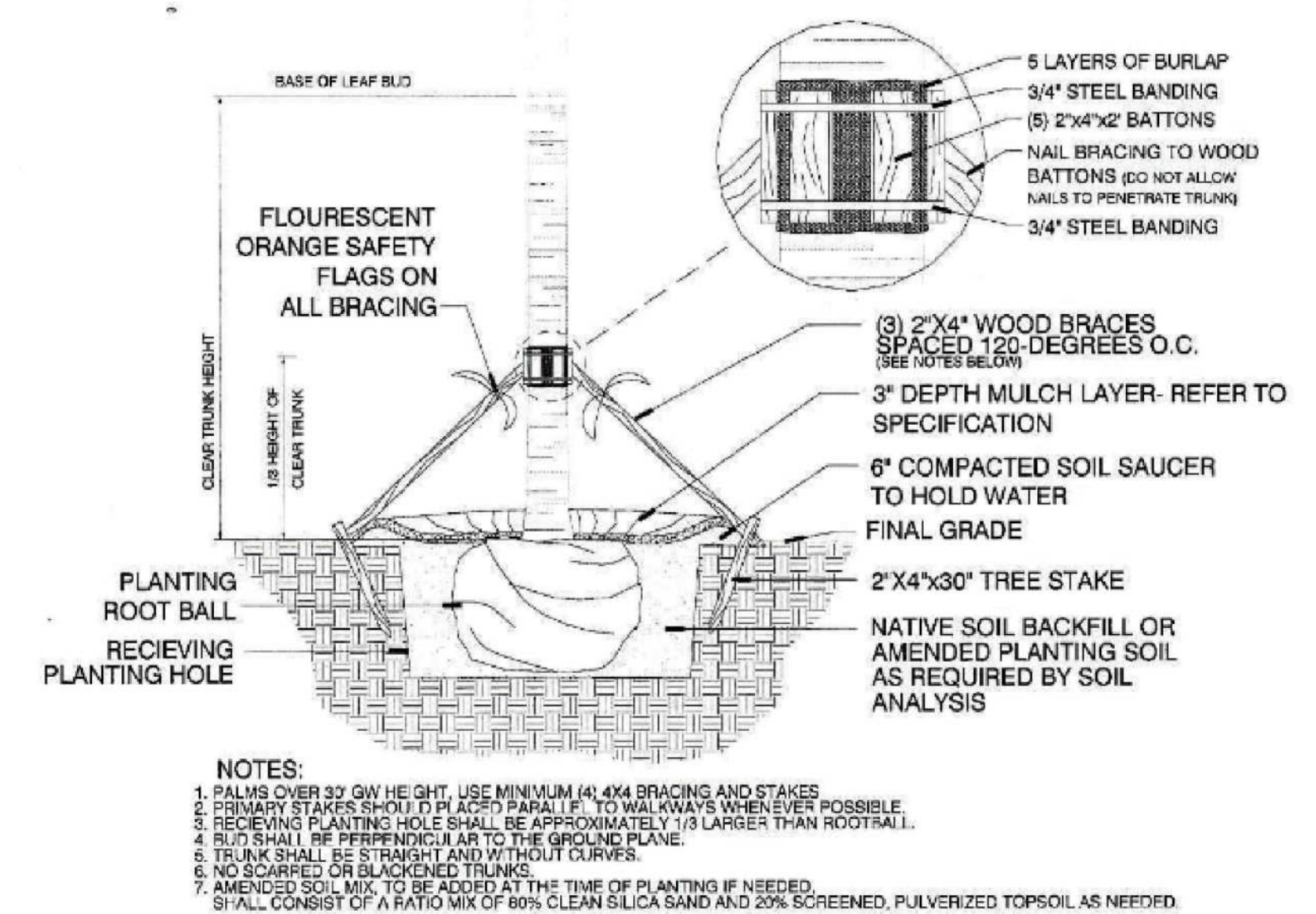


- KEY**
- 1 SET TREE PLUMB IN PLANTING PIT.
 - 2 PROTECT TREE TRUNK WITH 1" NOMACO® 5" TPO/FPM PADDING GUARDS, #16/18/20/24, AS SPECIFIED, OR APPROVED EQUAL.
 - 3 AMAZON HOUSE AND RUBBER® 1 1/2" AIR HOSE #1146 OR APPROVED EQUAL, TO COVER 10 GAUGE WIRE.
 - 4 10 GAUGE GALVANIZED WIRE, WIRE PRODUCT®, OR APPROVED EQUAL.
 - 5 2"x4" NON TREATED LANDSCAPE TIMBER AS SPECIFIED, FASTEN WITH 4 3/8" DECK SCREWS TO 2"x4" P.T. LANDSCAPE TIMBERS.
 - 6 1" MALLEABLE CLAMP FASTENER FOR WIRE, SUPPLIER: FLORIDA WIRE® OR APPROVED EQUAL.
 - 7 2 2"x4" X 8' P.T. LANDSCAPE TIMBER AS SPECIFIED.
 - 8 1"-2" MULCH DEPTH LAYER ON ROOT BALL.
 - 9 4" WATER RING, (WITHIN ROOTBALL DIA.), FILL 3 TIMES IMMEDIATELY AFTER PLANTING, RAKE OUT PRIOR TO MULCHING AND PLANTING.
 - 10 ROOT FLARE 1"-2" ABOVE FINISHED GRADE.
 - 11 6MB OR CONTAINERIZED ROOTBALL, REMOVE ALL BURLAP IF NOT 100% BIODEGRADABLE, REMOVE CONTAINER FROM ROOTBALL PRIOR TO PLANTING.
 - 12 BACKFILL TOP SOIL TYP. OF AREA, BACKFILL SHALL BE AMENDED THROUGHOUT ENTIRE SITE WITH FERTILIZER AND COMPOST AS REQUIRED.
 - 13 UNDISTURBED SUBGRADE.
 - 14 COMPACT SOIL IMMEDIATELY BENEATH THE ROOT BALL TO PREVENT SETTLING.
- NOTES:**
1. CONTRACTOR TO ASSURE PERCOLATION IN TREE PITS.
 2. NO MULCH WITHIN 4" OF TRUNK.

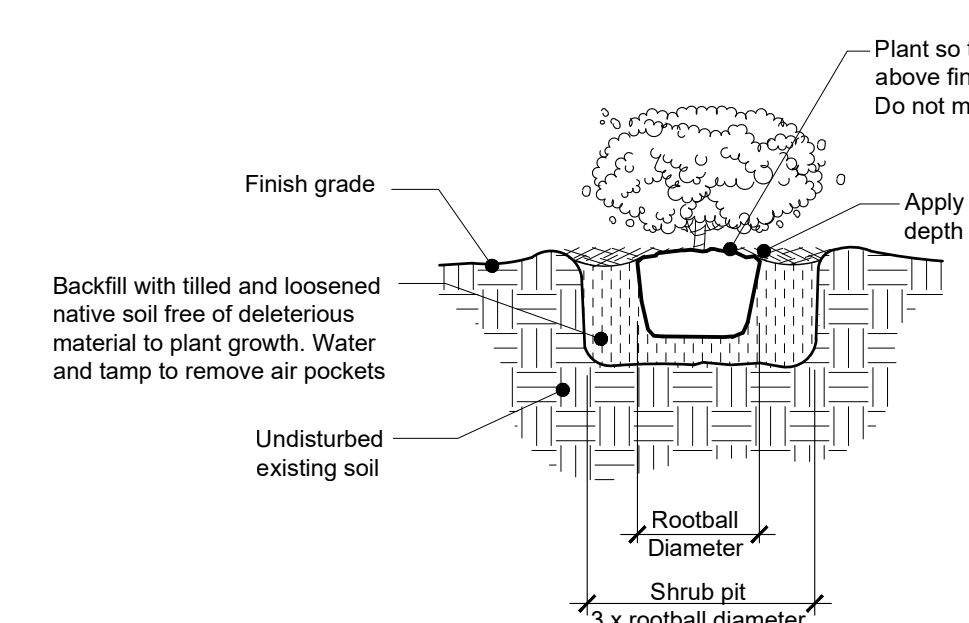
City of Miami Beach
Typical Tree Planting Detail
N.T.S.



Typical Sod Planting Detail
N.T.S.



City of Miami Beach
Typical Palm Planting Detail
N.T.S.



Typical Shrubs / Groundcover
Planting Detail
N.T.S.

NOTE:
THE RIGHT OF WAY'S PERMIT IS REQUIRE PRIOR TO START THE WORK IN THE RIGHT OF WAY

