

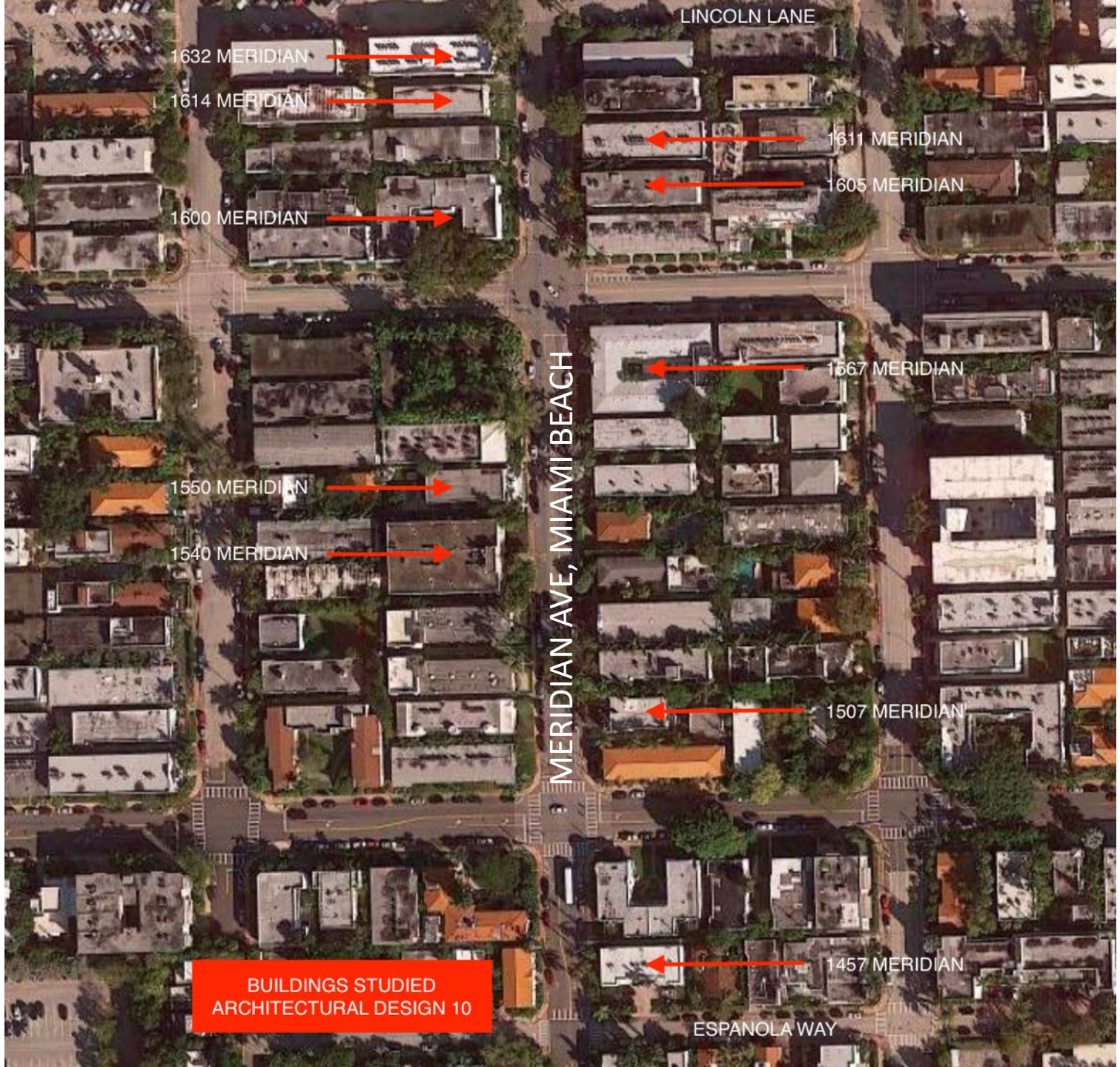
FIU ARCHITECTURAL DESIGN STUDIO, ARC 6356

**HISTORIC PRESERVATION, SEA LEVEL RISE,
AND INSPIRATIONAL RESILIENCY VISIONS FOR MIAMI BEACH IN 2070**

**Selected Visions for Meridian Avenue between Lincoln Road and Española Way
Created by FIU Architecture Students, Fall 2020**

[Rights to the images are held by the students who created them.]

John Stuart, AIA, Studio Professor



LINCOLN LANE

1632 MERIDIAN

1614 MERIDIAN

1600 MERIDIAN

1611 MERIDIAN

1605 MERIDIAN

MERIDIAN AVE, MIAMI BEACH

1567 MERIDIAN

1550 MERIDIAN

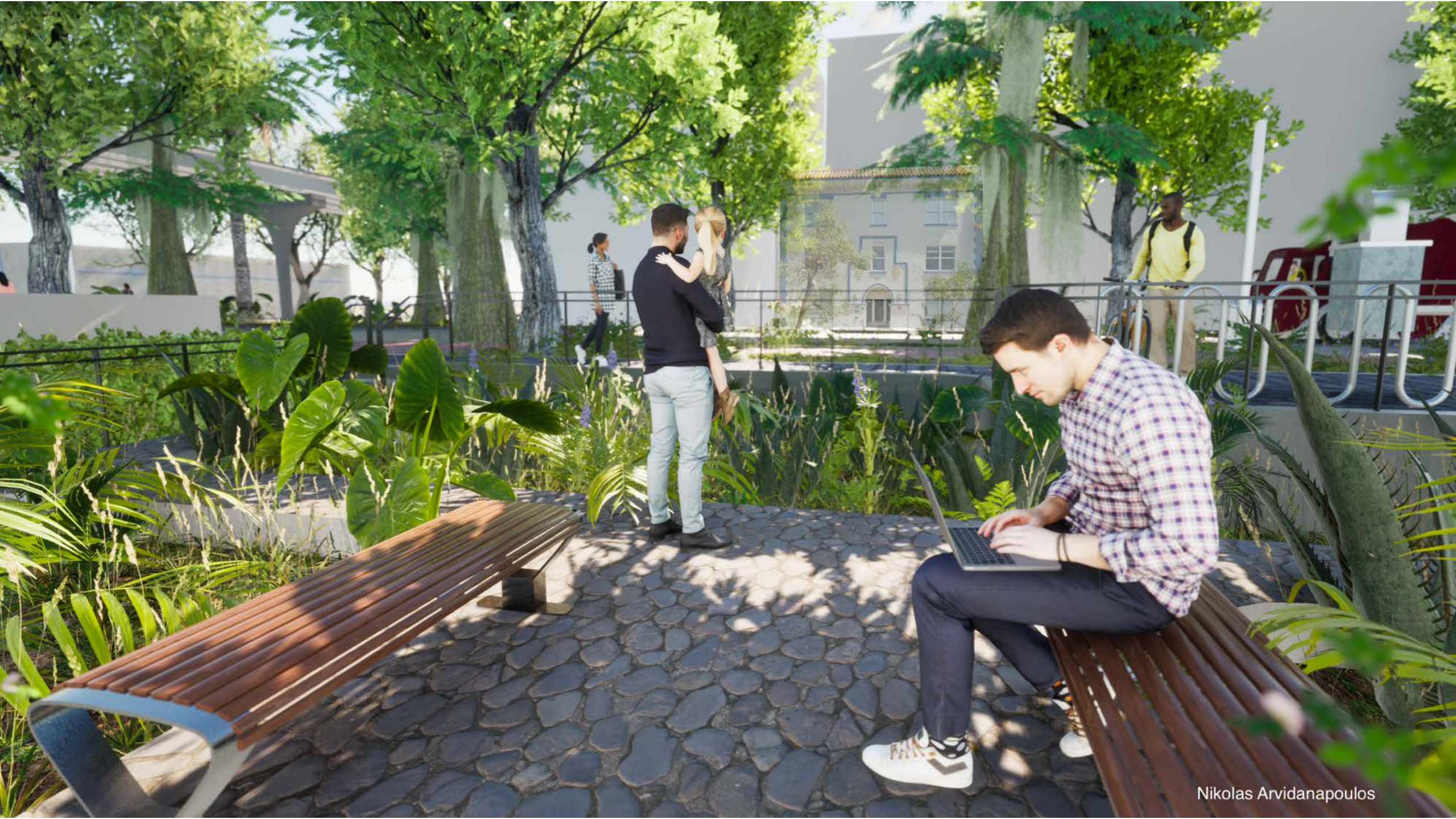
1540 MERIDIAN

1507 MERIDIAN

BUILDINGS STUDIED
ARCHITECTURAL DESIGN 10

1457 MERIDIAN

ESPANOLA WAY

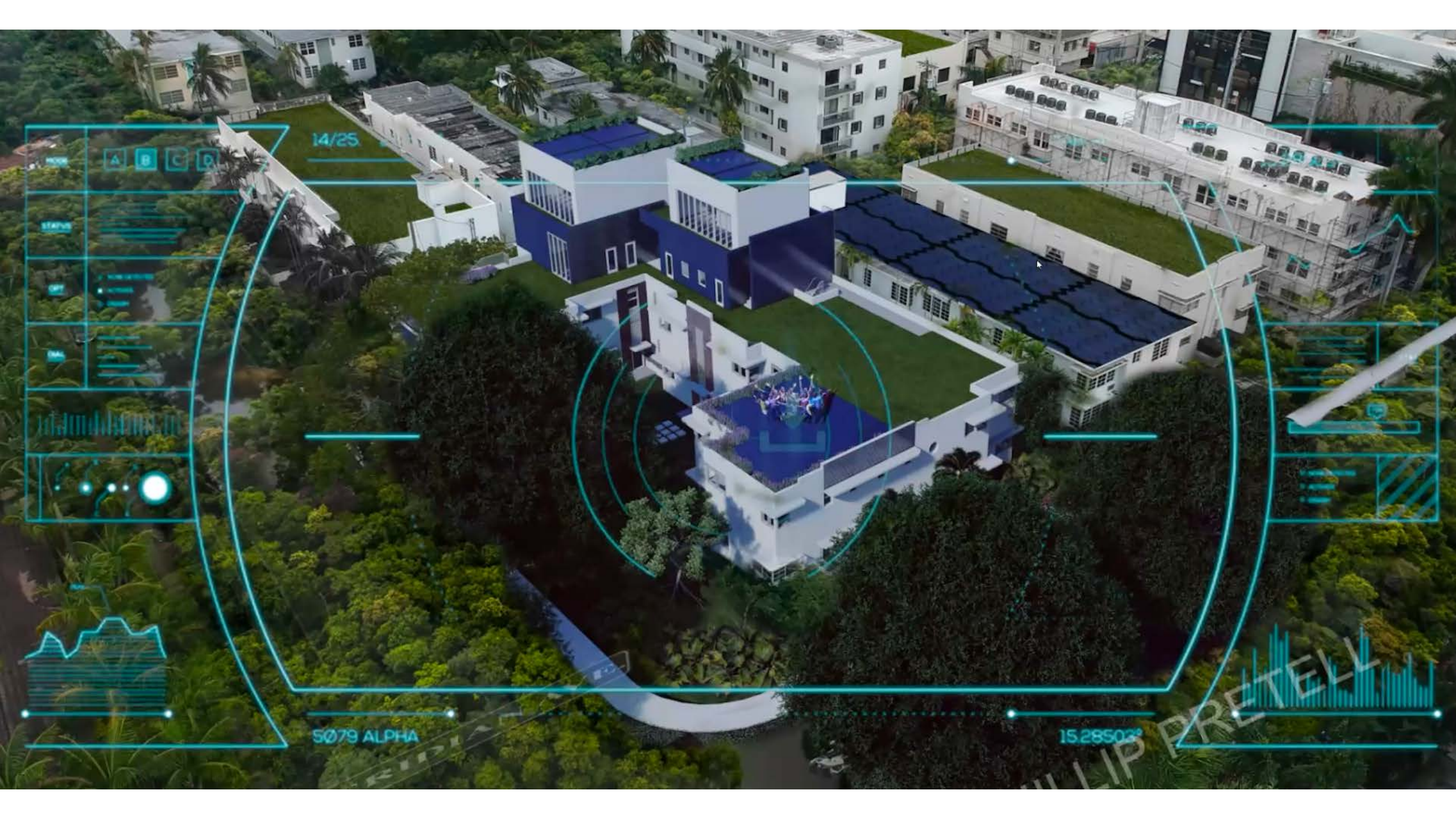




Nikolaos Arvidanopoulos







14/25

A B C D

STATUS

DATA

5079 ALPHA

15.28503°





78°
Miami Beach, FL

NOV 4 2070

10:08

1611 Meridian Avenue
Miami Beach, FL 33139
Opened: 1925







Miami Beach
Research Center A
1311 M St

1567