

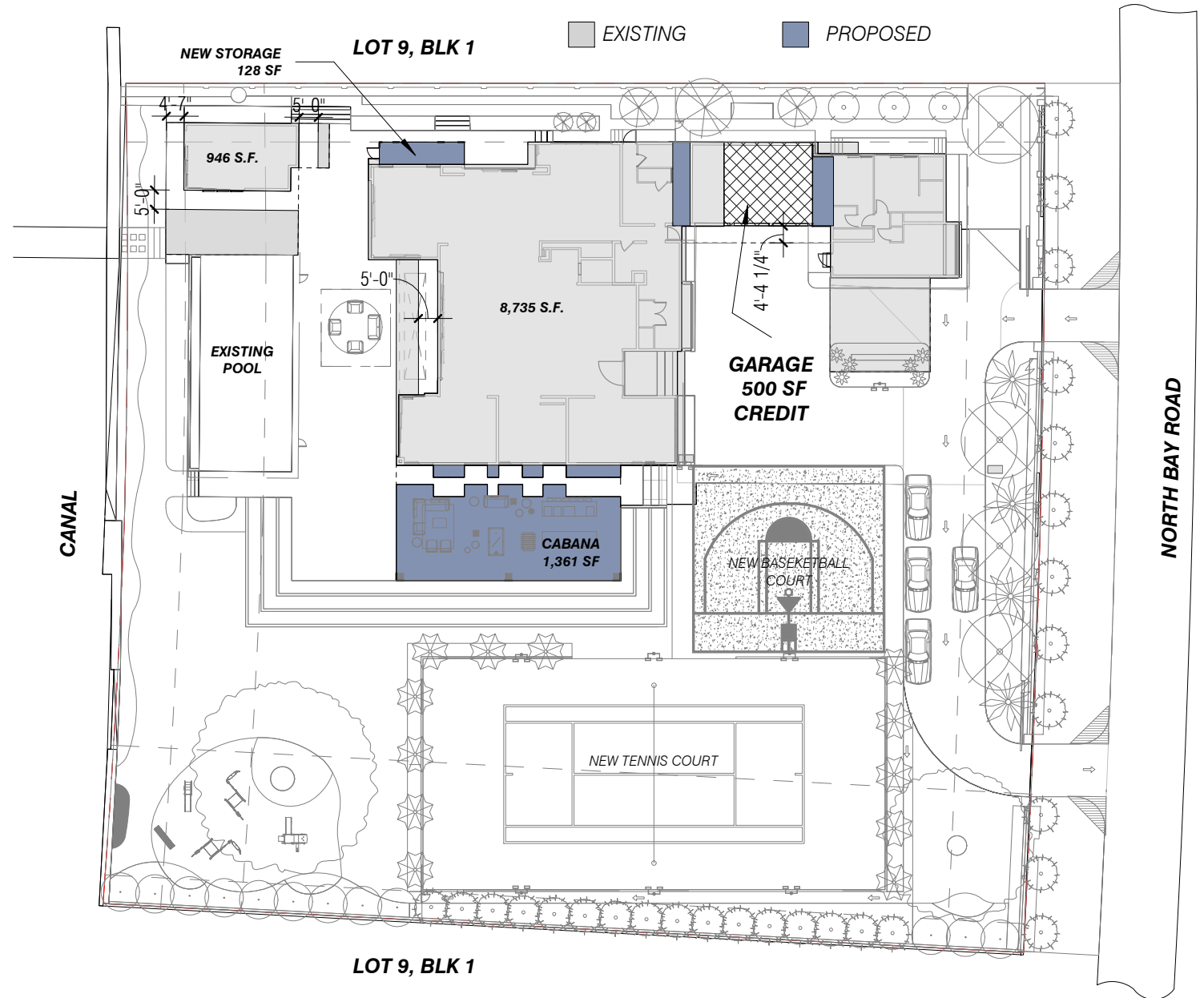
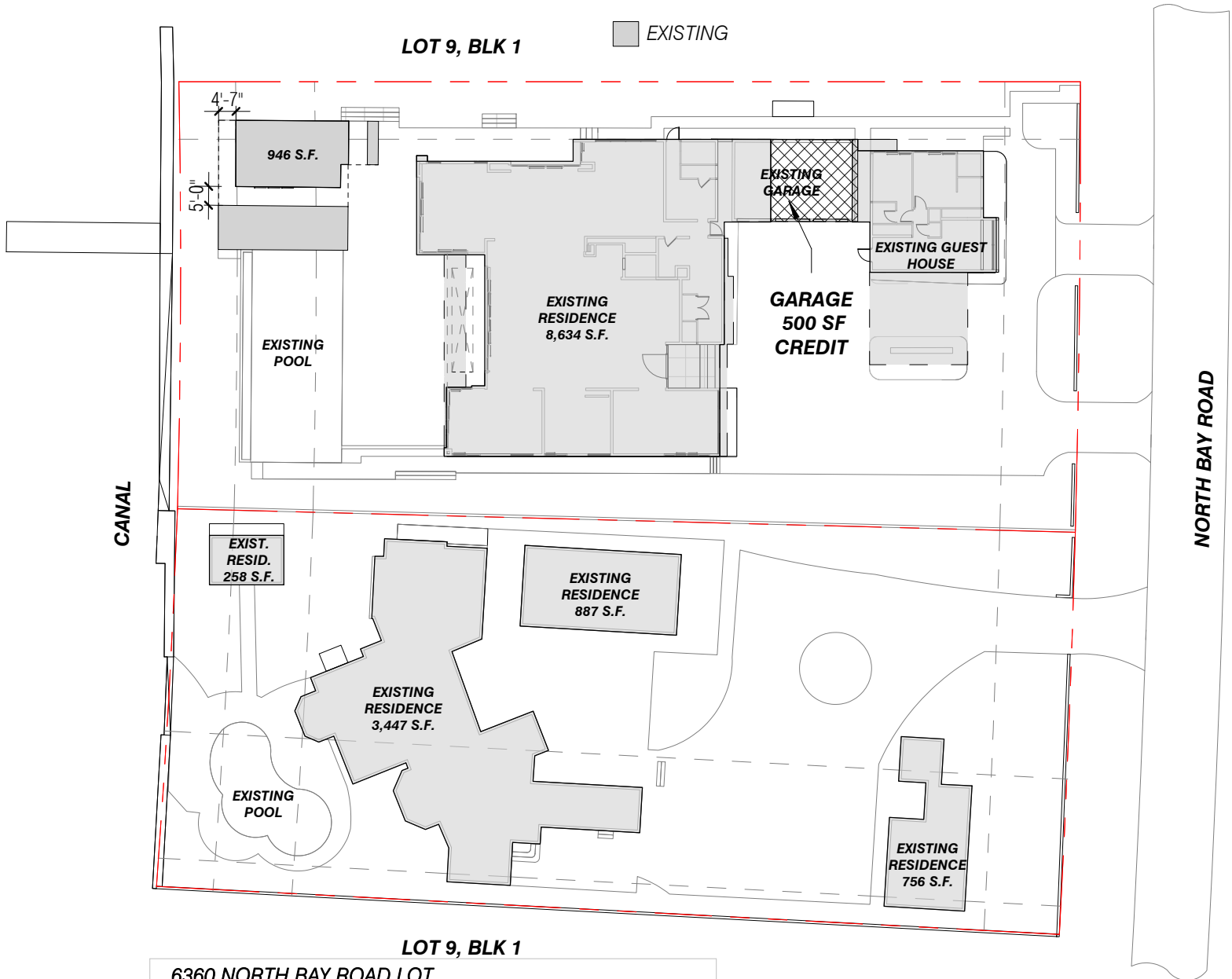
6360 NORTH BAY ROAD	
LOT SIZE	27,668 S.F.
UNIT SIZE LEVEL 1	7,317 S.F. (26.4%)
UNIT SIZE LEVEL 2	6,138 S.F. (22.1%)
SUB TOTAL:	13,455 S.F. (48.6%)
6342 NORTH BAY ROAD	
LOT SIZE	24,648 S.F.
UNIT SIZE	5,348 S.F. (21.6%)

EXISTING UNIT SIZE
Scale: 1" = 40'-0"

6360 NORTH BAY ROAD	
LOT SIZE	52,316 S.F.
UNIT SIZE LEVEL 1	7,872 S.F. (15%)
UNIT SIZE LEVEL 2	6,138 S.F. (11.7%)
TOTAL:	14,010 S.F. (26.7%)

PROPOSED UNIT SIZE
Scale: 1" = 40'-0"

6342-6360 NORTH BAY ROAD



LOT 9, BLK 1

6360 NORTH BAY ROAD LOT		
LOT SIZE	27,668 S.F.	
LOT COVERAGE	9,580 S.F.	(34.6%)
GARAGE DEDUCTION	-500 S.F.	
TOTAL	9,080 S.F.	(32.8%)
6342 NORTH BAY ROAD LOT		
LOT SIZE	24,648 S.F.	
LOT COVERAGE	5,348 S.F.	(21.7%)
COMBINED:		
LOT SIZE	52,316 S.F.	
LOT COVERAGE	14,927	(28.5%)

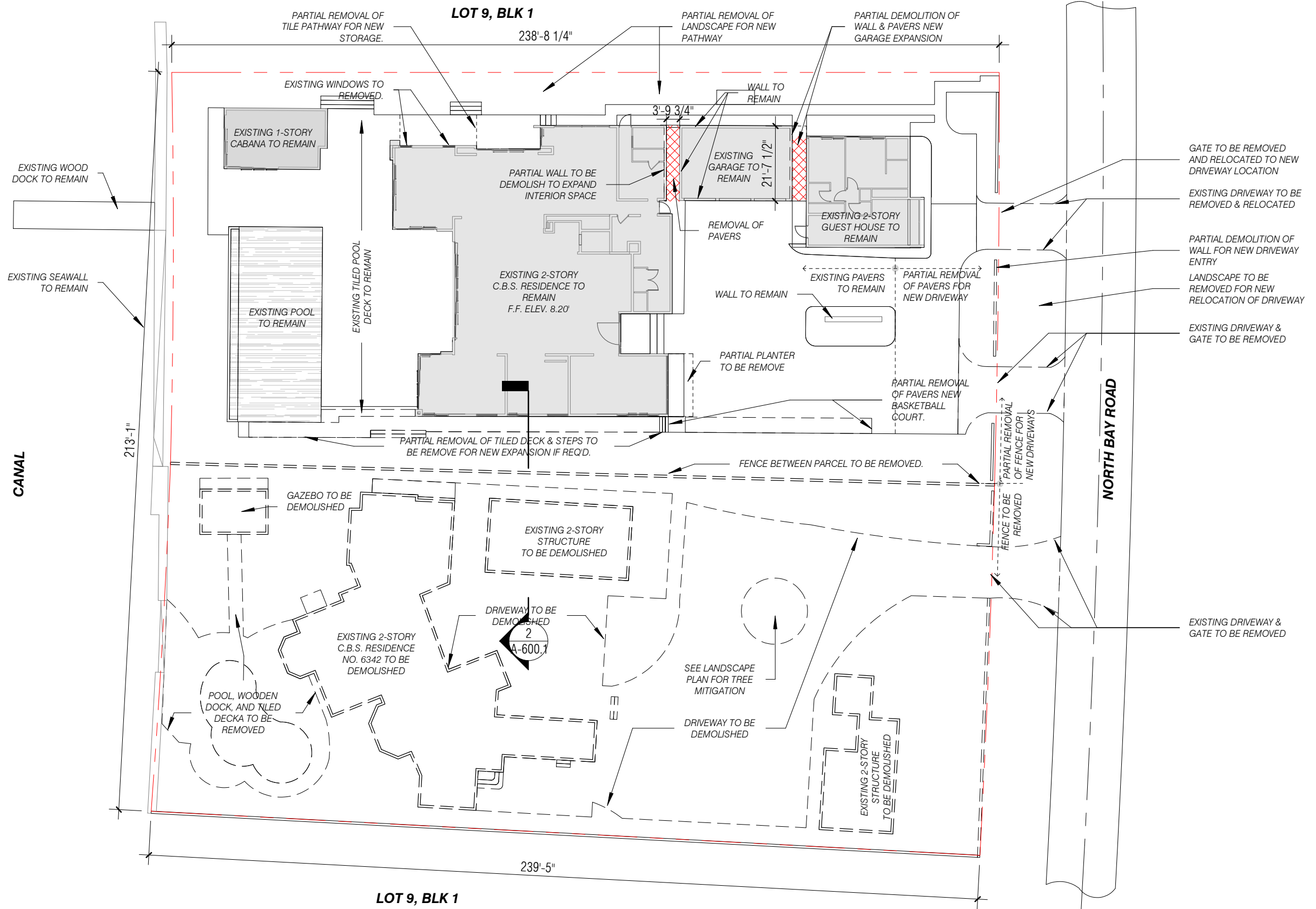
EXISTING LOT COVERAGE
Scale: 1" = 40'-0"

6360 NORTH BAY ROAD		
LOT SIZE	52,316 S.F.	
LOT COVERAGE	11,042 S.F.	(21.1%)
GARAGE DEDUCTION	-500 S.F.	
TOTAL:	10,542 S.F.	(20.1%)

PROPOSED LOT COVERAGE
Scale: 1" = 40'-0"

6342-6360 NORTH BAY ROAD





6342-6360 NORTH BAY ROAD

CFZ DESIGN

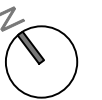
13300 SW 52ND COURT
MIRAMAR, FL 33027
t 239.898.7549

e chris@cfzdesign.com
w www.cfzdesign.com

Demolition Plan

1" = 30'-0"

12-7-2020



A-060-Demolition