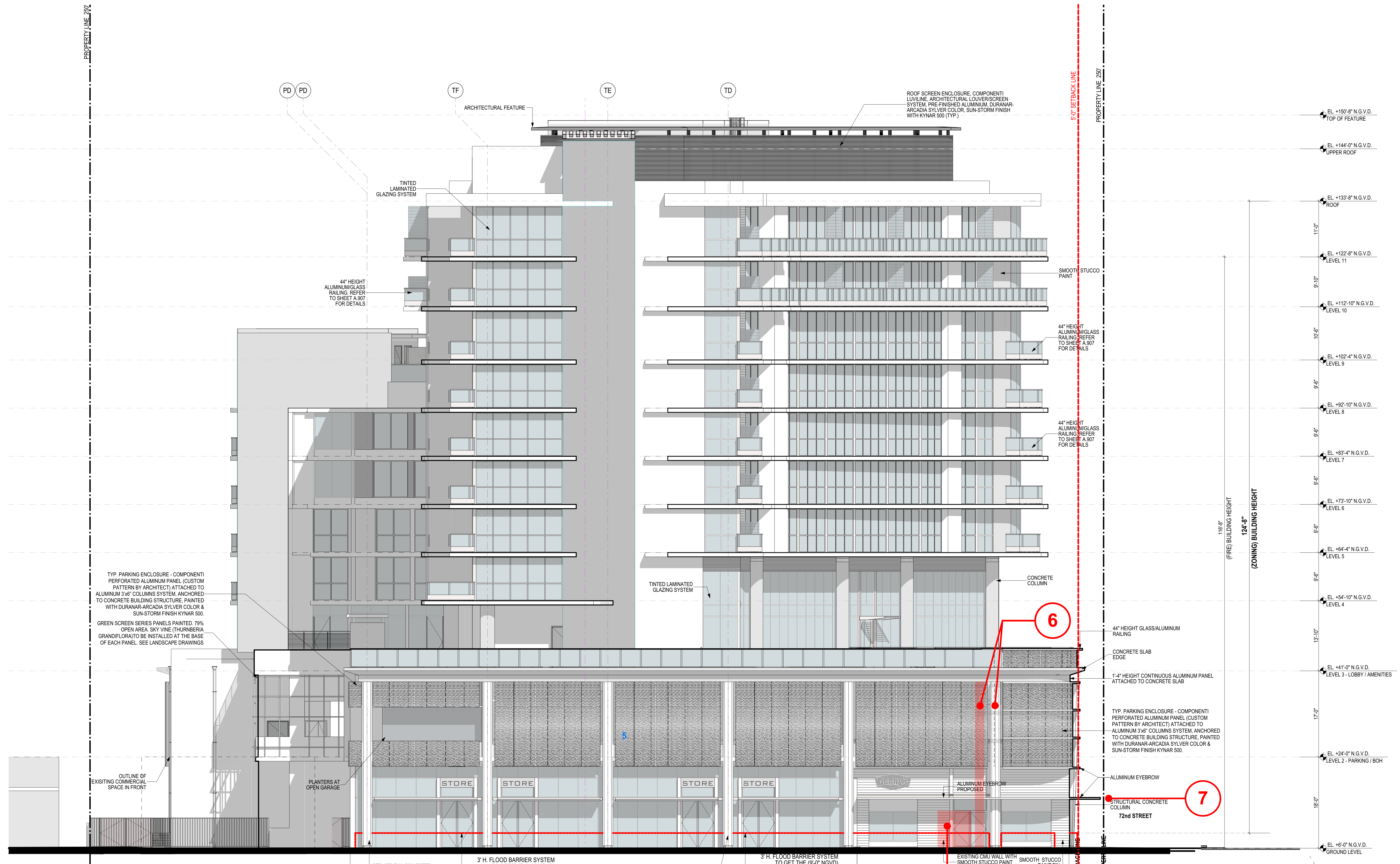


NOT FOR CONSTRUCTION



- PROPOSED MODIFICATIONS ON PHASE 1
- 6. COLUMN RELOCATION
  - 7. ALUMINUM AWNING/EYEBROW EXTENDED TO MATCH FOOTPRINT OF EXISTING CONSTRUCTED AWNING
  - 8. RETAIL DOOR RELOCATION

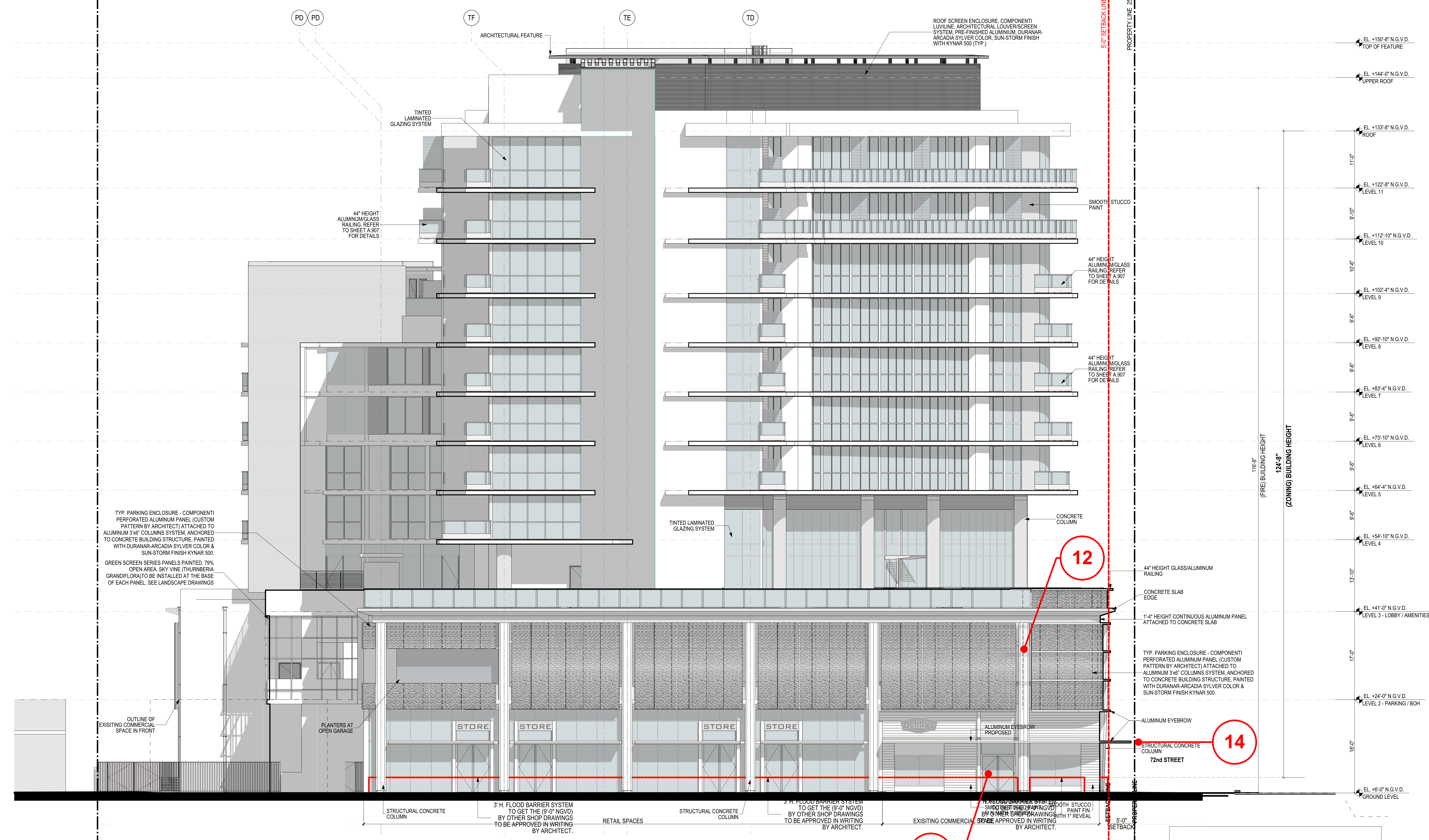
EAST BUILDING ELEVATION 1

SCALE 1/8"=1'-0"

NOT FOR CONSTRUCTION

PROPERTY LINE 257'

5'-0" SETBACK LINE  
PROPERTY LINE 250'

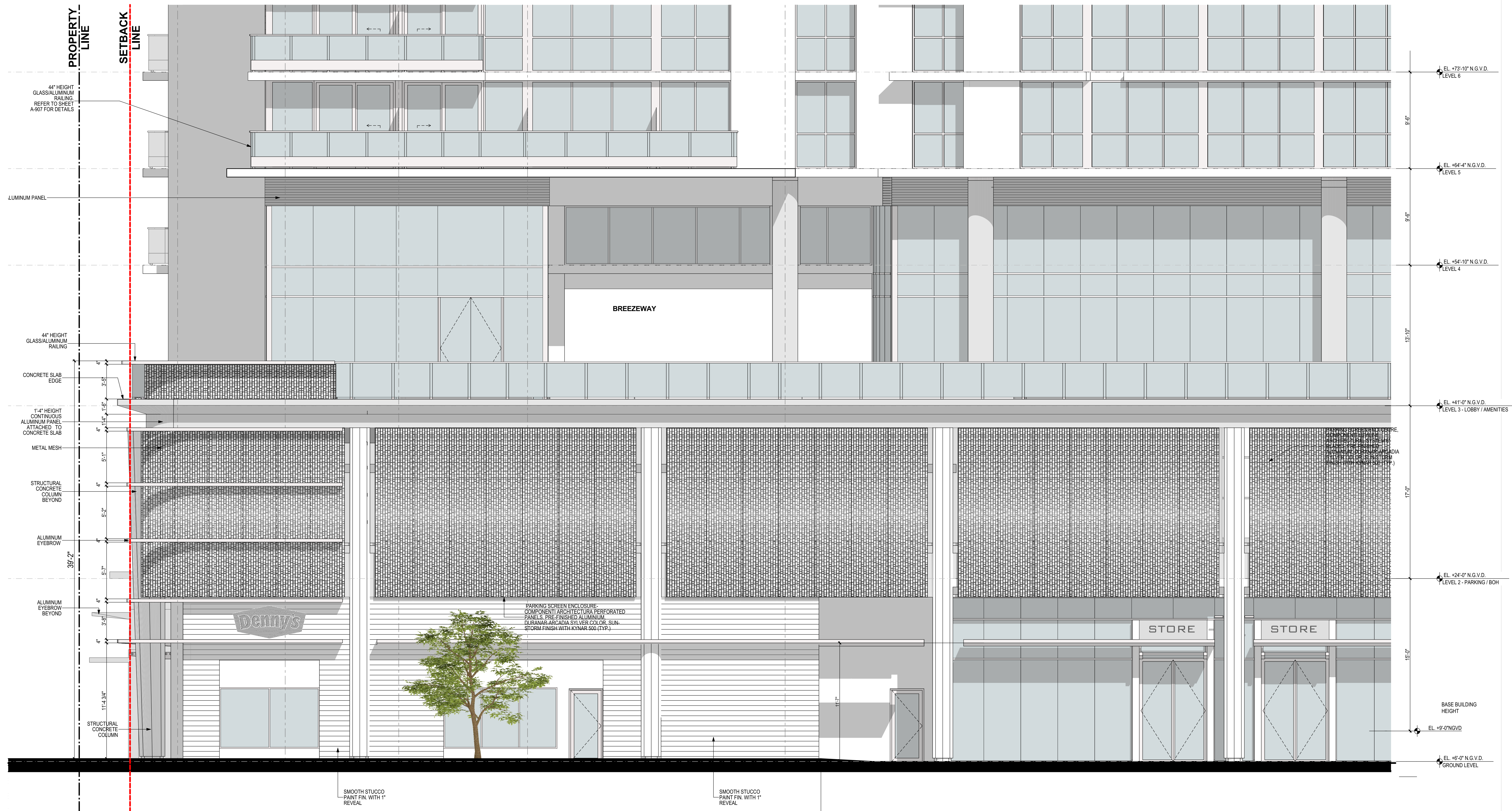


- 12. COLUMN REMAIN IN THIS LOCATION
- 14. ALUMINUM AWNING/EYEBROW DIMENSIONS REMAIN
- 15. RELOCATION RETAIL DOOR

EAST BUILDING ELEVATION 1  
SCALE 1/8"=1'-0"

Vertical text on the left margin containing project details and dates.

NOT FOR CONSTRUCTION

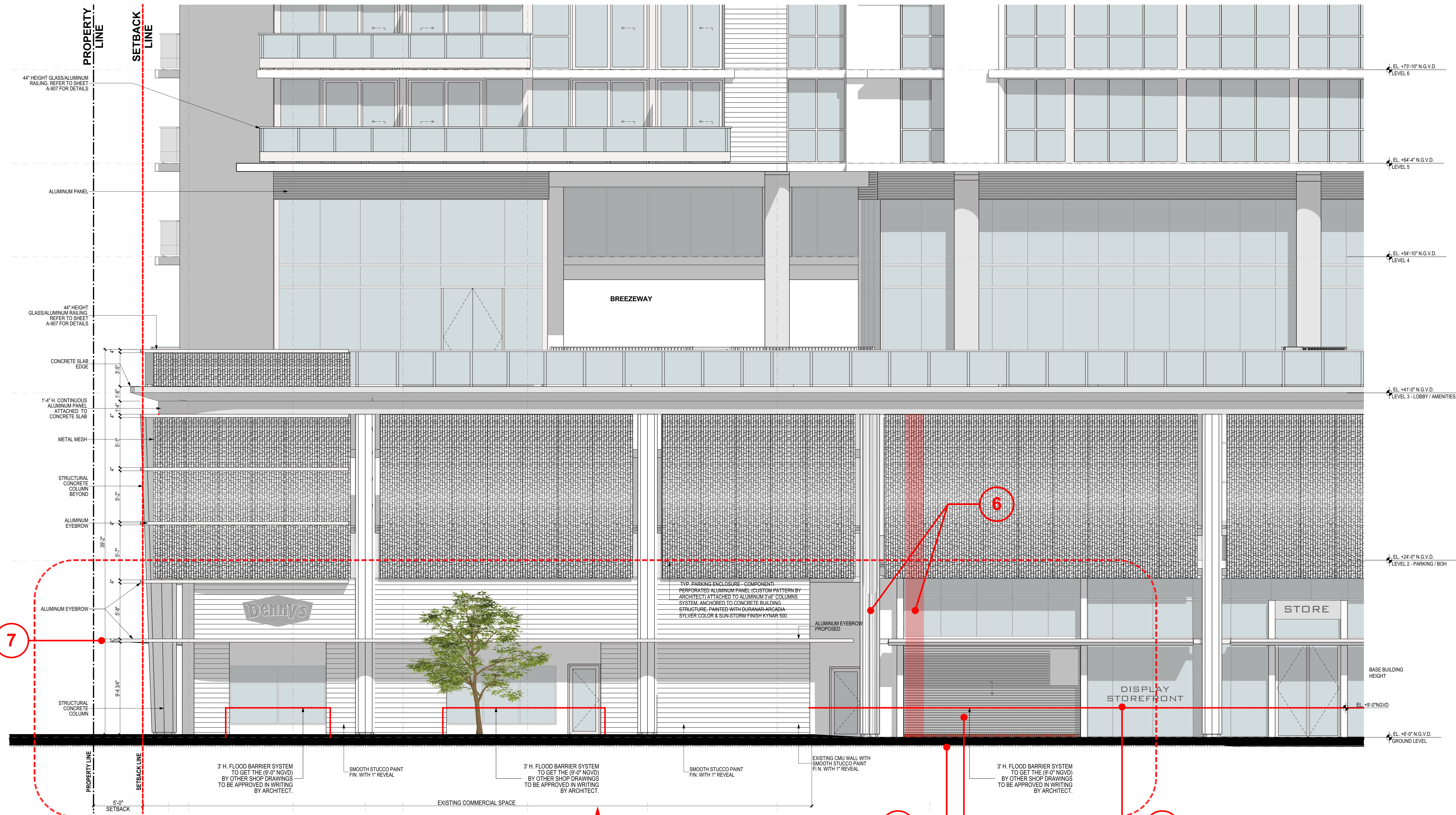


This document is the property of Revuelta Architecture International, Inc. and is not to be reproduced, copied, or disseminated in any form without the prior written consent of Revuelta Architecture International, Inc. The information contained herein is confidential and intended solely for the use of the individual user to whom it is addressed. If you have received this document by mistake, please notify the sender immediately. The information contained herein is not to be used for any other purpose. Revuelta Architecture International, Inc. is not responsible for any errors or omissions in this document. © 2013 Revuelta Architecture International, Inc. All rights reserved.

72ND STREET AND COLLINS  
CORNER NORTH FACADE 1

SCALE 1/4"=1'-0"

Digitally signed by Luis O. Revuelta  
 DN: cn=Luis O. Revuelta, o=Revuelta Architecture International, c=US  
 Date: 2013.11.04 13:05:25-0500



**PROPOSED MODIFICATIONS ON PHASE 1**

1. NEW CURB CUT	7. ALUMINUM AWNING/EYEBROW EXTENDED TO MATCH FOOTPRINT OF EXISTING CONSTRUCTED AWNING
2. NEW ROLL-UP GATE - ENTRY TO ADDITIONAL PARKING	
3. Not used	
4. DISPLAY WINDOW	
5. Not used	
6. COLUMN RELOCATION	

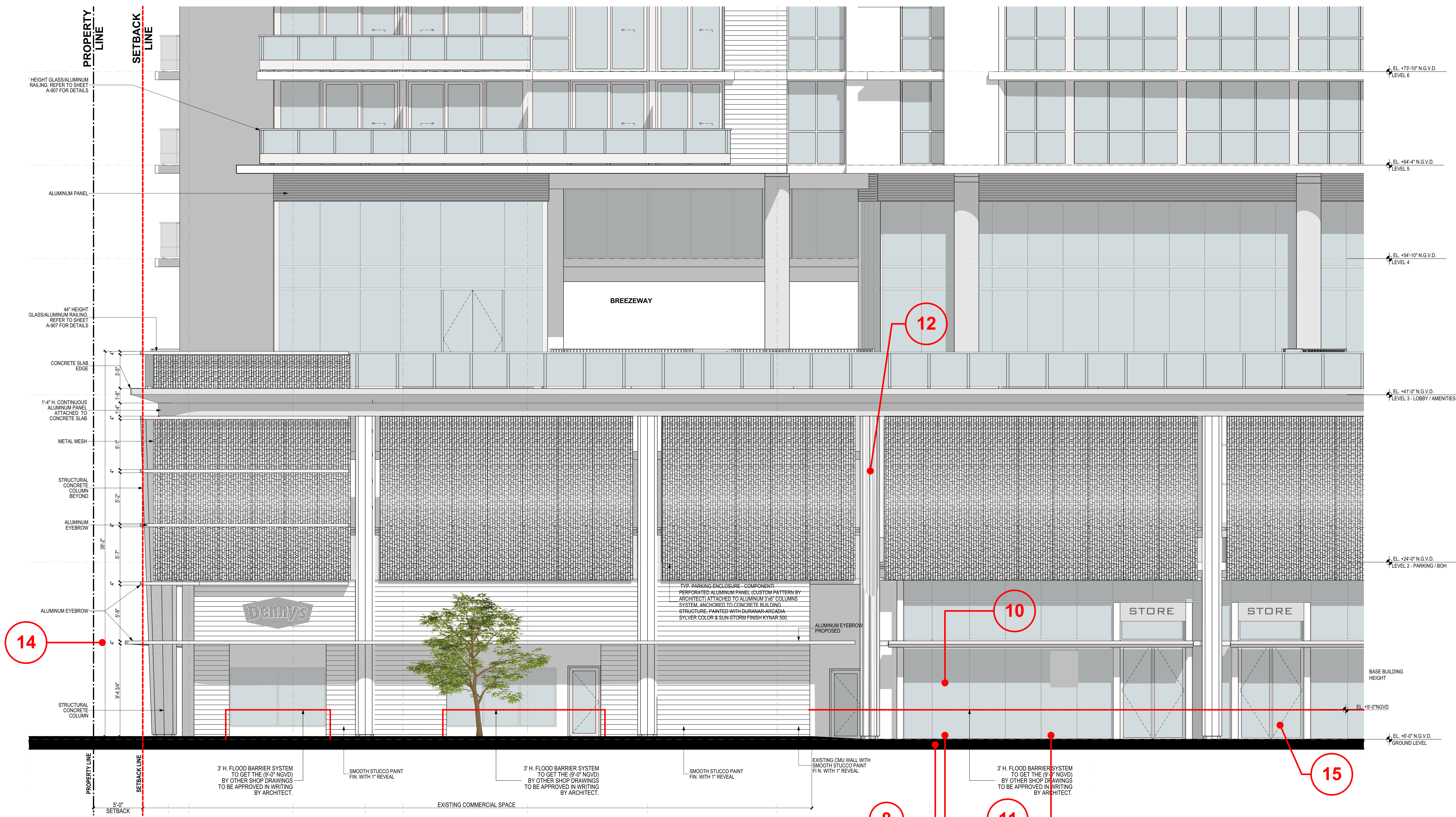
**AREA SUBJECT OF THIS APPLICATION - PHASES 1 & 2**

**72ND STREET AND COLLINS CORNER NORTH FACADE**

SCALE 1/4"=1'-0"

NOT FOR CONSTRUCTION

This drawing is the property of Revuelta Architecture International, Inc. and is not to be reproduced, copied, or used in any way without the written consent of Revuelta Architecture International, Inc. The user of this drawing is responsible for obtaining all necessary permits and approvals from the appropriate authorities. The user of this drawing is also responsible for obtaining all necessary approvals from the appropriate authorities. The user of this drawing is also responsible for obtaining all necessary approvals from the appropriate authorities.



- |  |   |
|--|---|
| 8. CLOSING OF CURB CUT                                 | 14. ALUMINUM AWNING/EYEBROW DIMENSIONS REMAIN |
| 9. NEW LANDSCAPE AND HARDSCAPE TO MATCH ADJACENT AREAS | 15. RELOCATION RETAIL DOOR                    |
| 10. REPLACE GATE WITH STOREFRONT                       |   |
| 11. INSTALL NEW RETAIL DOOR                            |   |
| 12. COLUMN REMAIN IN THIS LOCATION                     |   |
| 13. COMPLETION OF RETAIL SPACE                         |   |