

The RALEIGH MASTERPLAN



OWNER

BSD RALEIGH PROPCO LLC
C/O SHVO

745 Fifth Avenue
New York, NY 10151
O: 212.380.2100

ARCHITECT

KOBI KARP ARCHITECTURE
& INTERIOR DESIGN, INC.

2915 Biscayne Boulevard, Suite 200
Miami, FL 33137
O: 305.573.1818

ARCHITECT

PETER MARINO ARCHITECT

150 East 58th Street
New York, NY 10022
O: 212.752.5444

ARCHITECTURAL HISTORIAN

ARTHUR MARCUS

1800 North Andrews Avenue #7F
Fort Lauderdale, FL 33311
O: 305.467.6141

PROFESSOR OF ARCHITECTURE
AND HISTORY, PH.D.

JEAN-FRANCOIS
LEJEUNE

20 Island Avenue #302
Miami Beach, FL 33139
O: 305.772.6729

LANDSCAPE

ENEA GARDEN DESIGN INC.

7500 Northeast 4th Court, Studio 104
Miami, FL 33138
O: 305.576.67027

CITY OF MIAMI BEACH
HISTORIC PRESERVATION BOARD
PRELIMINARY PRESENTATION

SEPTEMBER 8, 2020

Massing Overlay
South Elevation

- Original Massing
- Proposed Massing



North Elevation

Original Massing

- Original Building Position
- Building Stepped Back
- Building Shifted West 6'



Proposed Revised Massing



South Elevation

Original Massing

- Original Building Position
- Building Stepped Back
- Building Shifted West 6'



Proposed Revised Massing



Massing Modifications



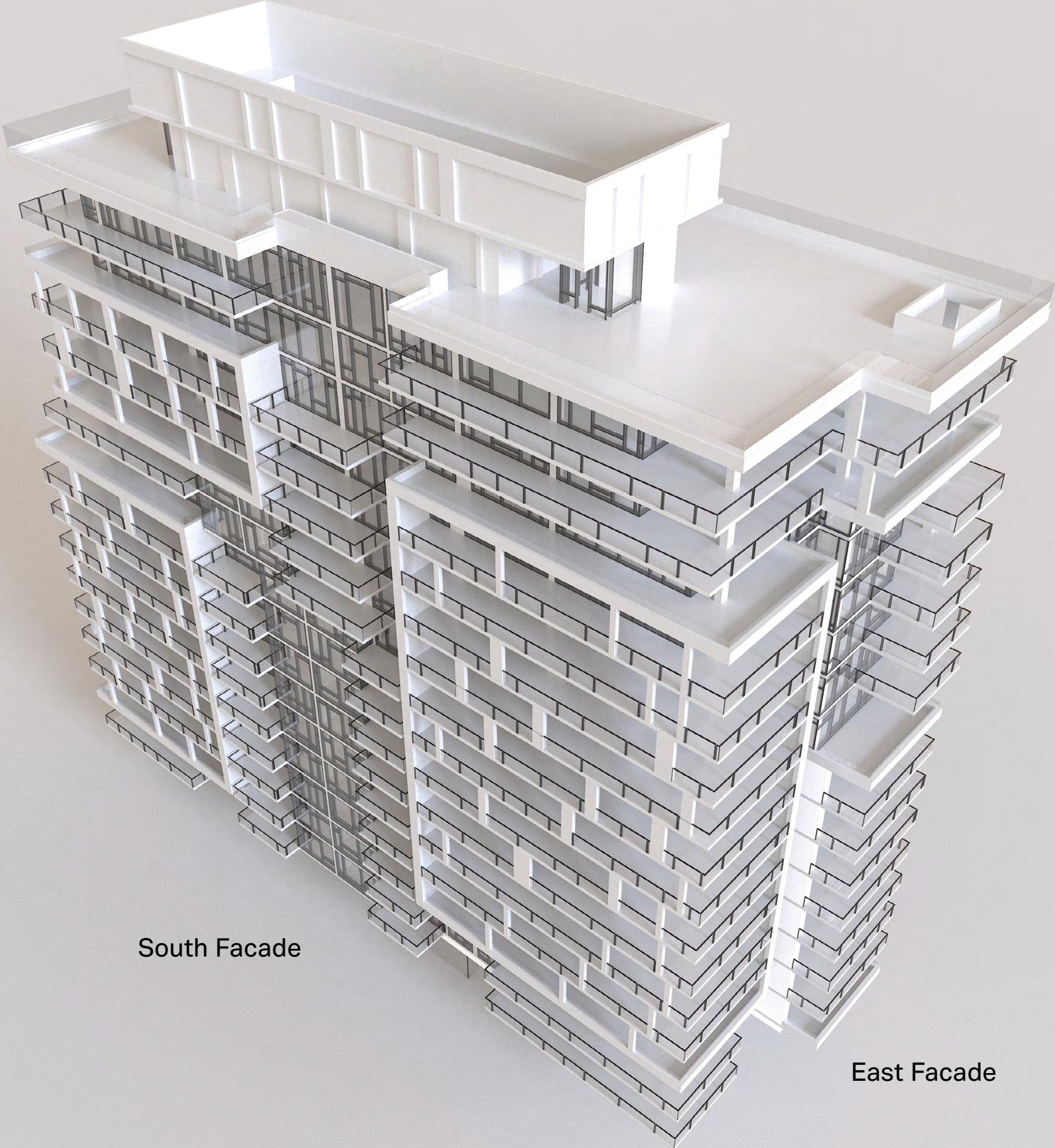
[Animated view \(click image above or click link here\)](#)

Original Massing



Proposed
Revised Massing

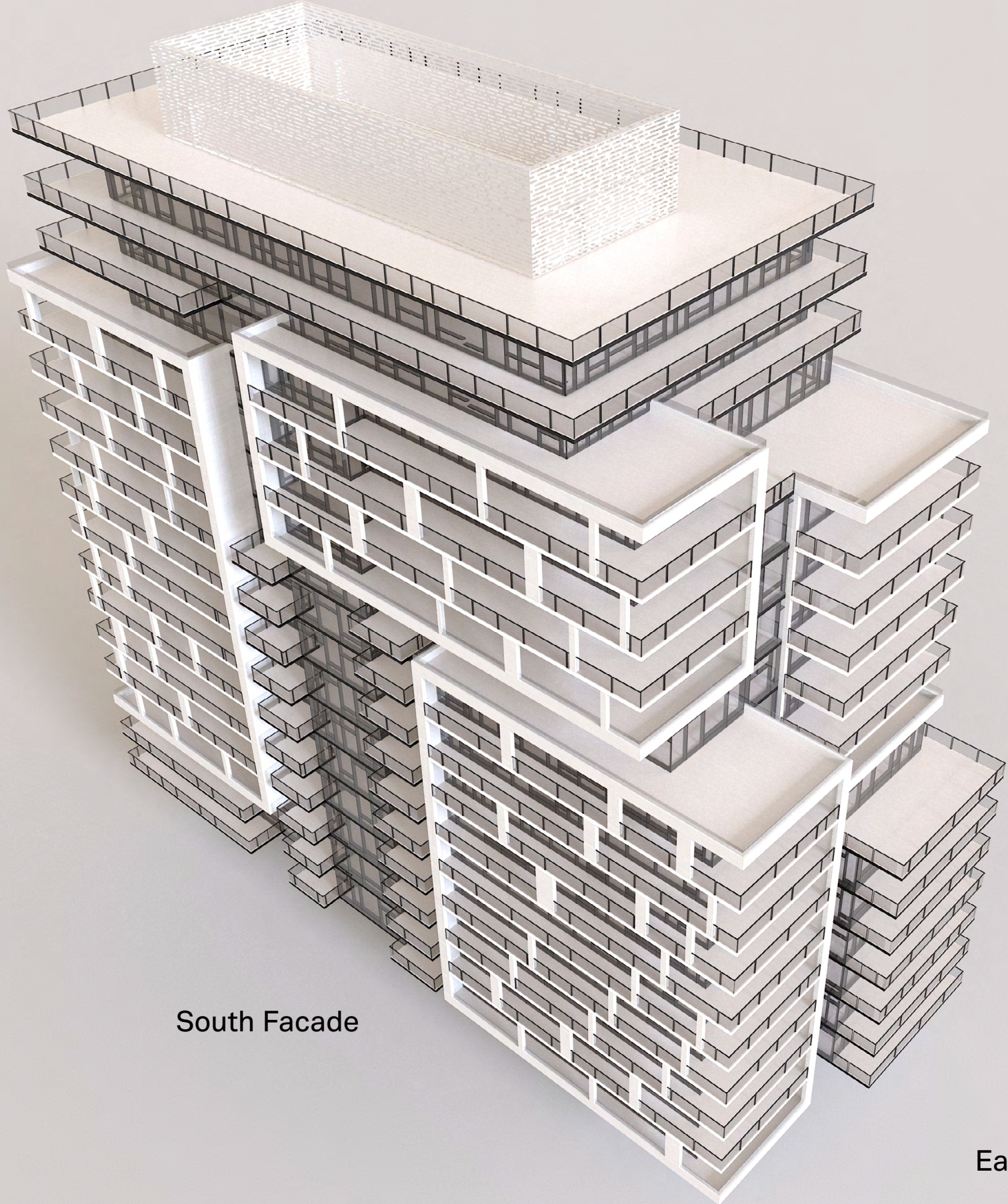




South Facade

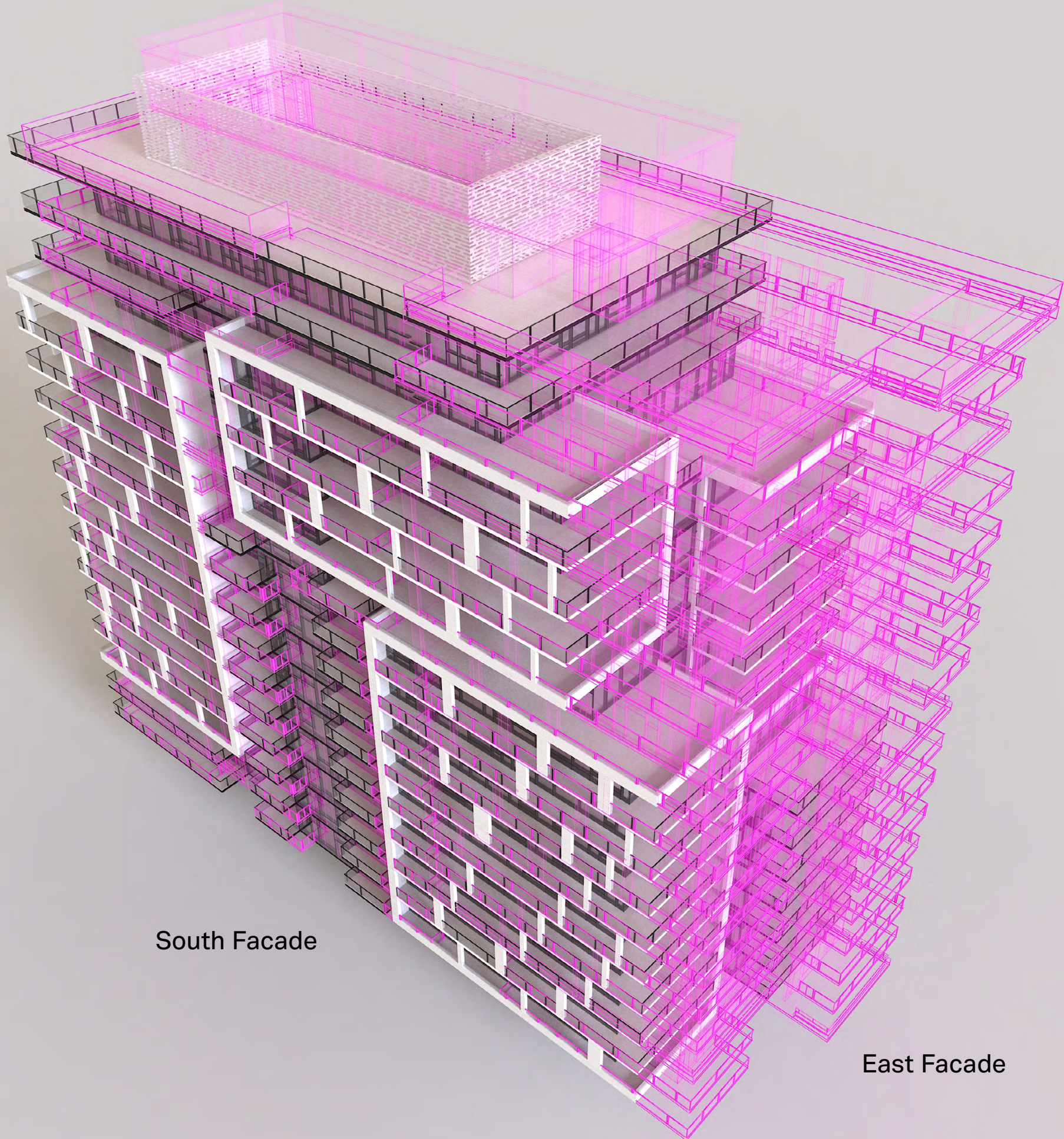
East Facade

Proposed Revised
Massing



South Facade

East Facade



South Facade

East Facade

- Original Massing
- Proposed Massing

Proposed Revised Massing: Aerial View











