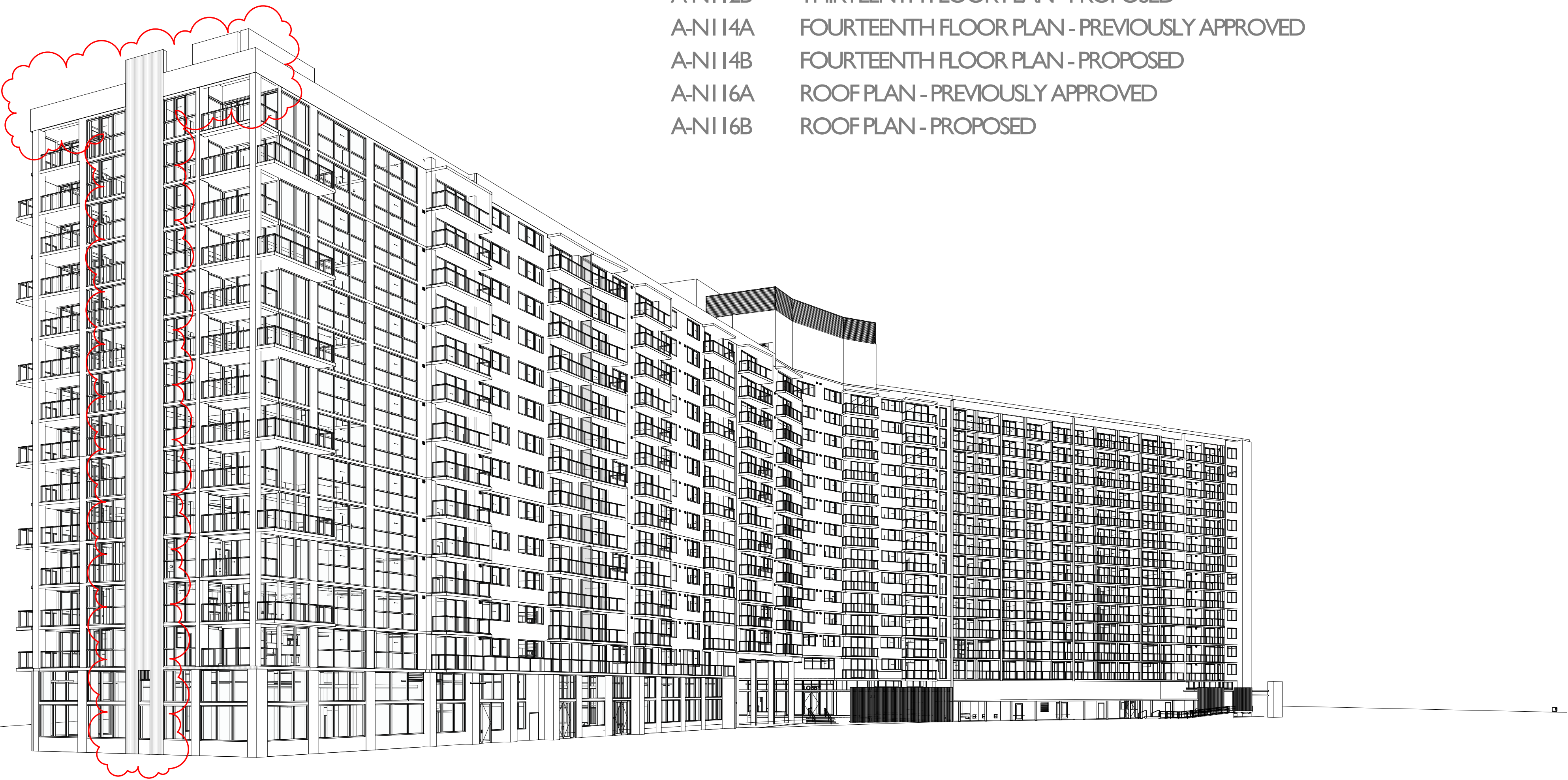


NORTH TOWER

NORTH TOWER FLOOR PLANS

A-NI02A	GROUND FLOOR PLAN - PREVIOUSLY APPROVED
A-NI04A	MEZZANINE FLOOR PLAN - PREVIOUSLY APPROVED
A-NI04B	MEZZANINE FLOOR PLAN - PROPOSED
A-NI06A	SECOND FLOOR PLAN - PREVIOUSLY APPROVED
A-NI06B	SECOND FLOOR PLAN - PROPOSED
A-NI08A	LEVEL 3, 5, 7, 9, 11, 13 FLOOR PLAN - PREVIOUSLY APPROVED
A-NI08B	LEVEL 3, 5, 7, 9, 11, 13 FLOOR PLAN - PROPOSED
A-NI10A	LEVEL 4, 6, 8, 10, 12 FLOOR PLAN - PREVIOUSLY APPROVED
A-NI10B	LEVEL 4, 6, 8, 10, 12 FLOOR PLAN - PROPOSED
A-NI12A	THIRTEENTH FLOOR PLAN - PREVIOUSLY APPROVED
A-NI12B	THIRTEENTH FLOOR PLAN - PROPOSED
A-NI14A	FOURTEENTH FLOOR PLAN - PREVIOUSLY APPROVED
A-NI14B	FOURTEENTH FLOOR PLAN - PROPOSED
A-NI16A	ROOF PLAN - PREVIOUSLY APPROVED
A-NI16B	ROOF PLAN - PROPOSED



Stantec Architecture Inc - AA26000733
Jonathan Cardello Lic. # AR93391

Tel: (305) 482-8700 / Fax: (305) 482-8770

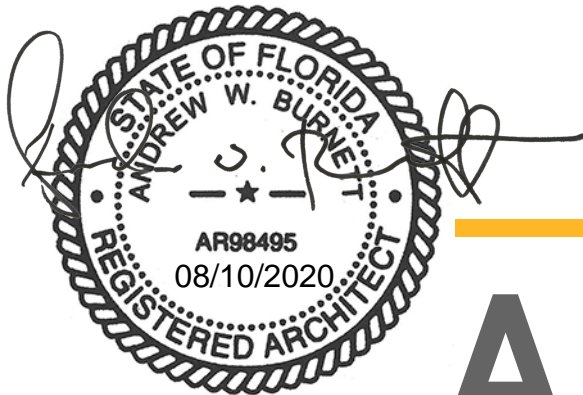


Stantec Architecture Inc.
One Biscayne Tower Suite 1670
2 South Biscayne Boulevard
Miami, FL 33131-1804
Tel: (305) 482-8700 / Fax: (305) 482-8770

DRB SUBMITTAL

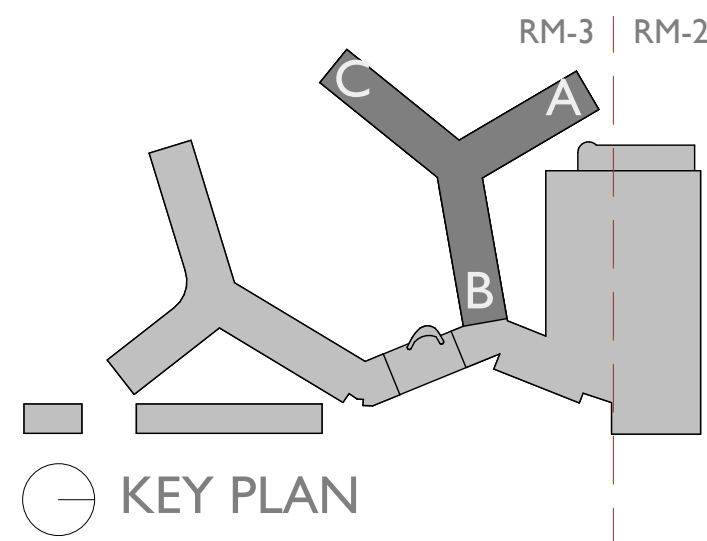
08.03.2017

Revision
08-10-2020



Copyright Reserved

A-N001



- PROPOSED PROGRAM
- BACK OF HOUSE AREAS
- EXISTING STRUCTURE, WALLS, AND PARTITION
- PROPOSED STRUCTURE, WALLS, AND PARTITION
- PROPOSED WATER FEATURES
- PROPOSED LANDSCAPE

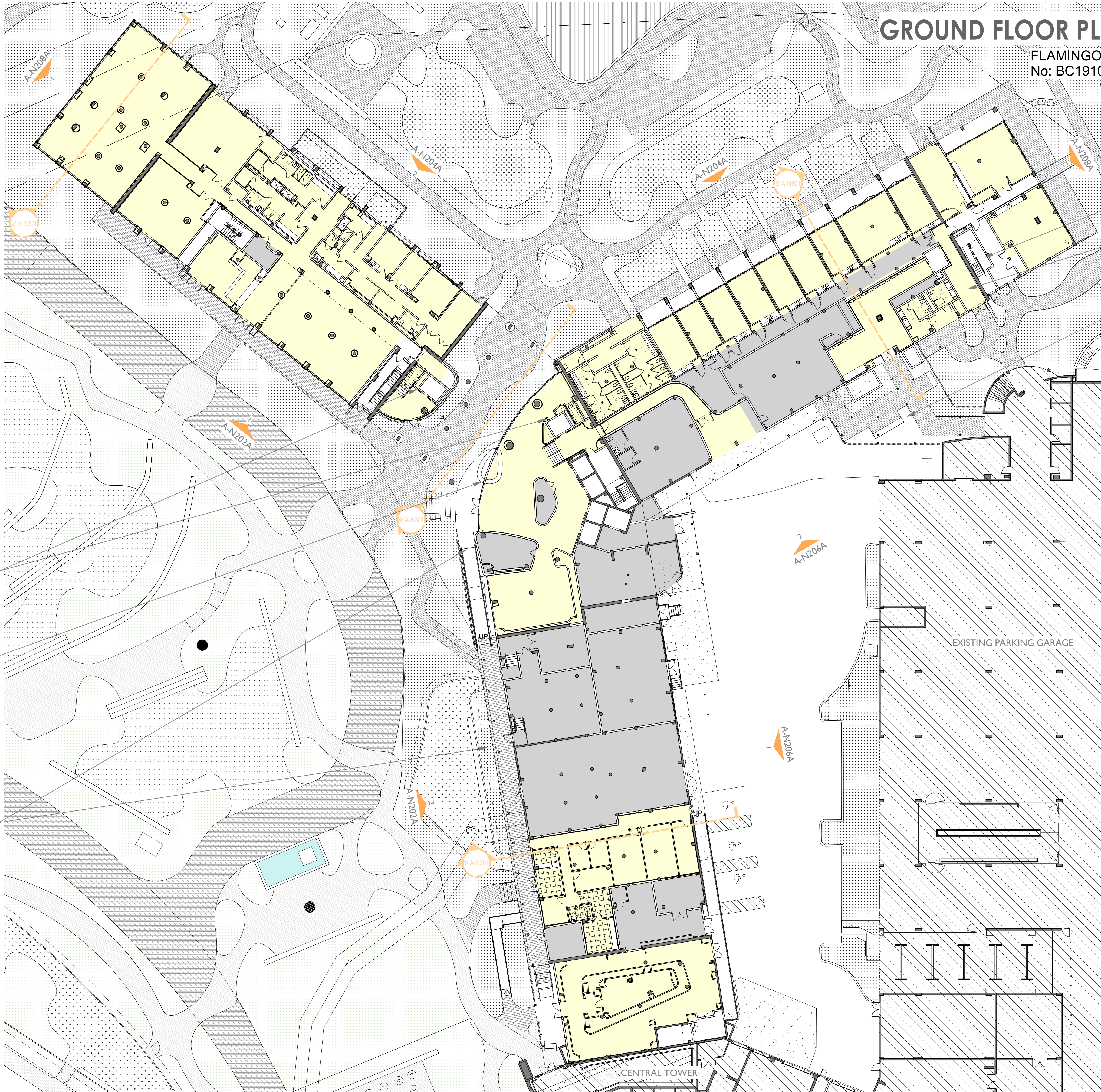
North Tower Sheet Notes -...	
1	Proposed Storefront/Glazing
2	Relocated Stairs
3	Proposed Elevator To Mezzanine Level

NEW STAIRS TO ACCESS
MEZZANINE LEVEL

PROPOSED EXTERIOR LOBBY

ARCHITECTURAL SCREENS

Level I - Approved
SCALE: 3/64" = 1'-0"



GROUND FLOOR PLAN - PREVIOUSLY APPROVED

FLAMINGO NORTH TOWER PERMIT
No: BC1910575

- RELOCATED STAIRS
- PROPOSED LOBBY FOR ACCESS
FROM WEST SIDE OF GARAGE
- EXISTING CANOPY ABOVE TO
BE REPLACED

EXISTING PARKING GARAGE

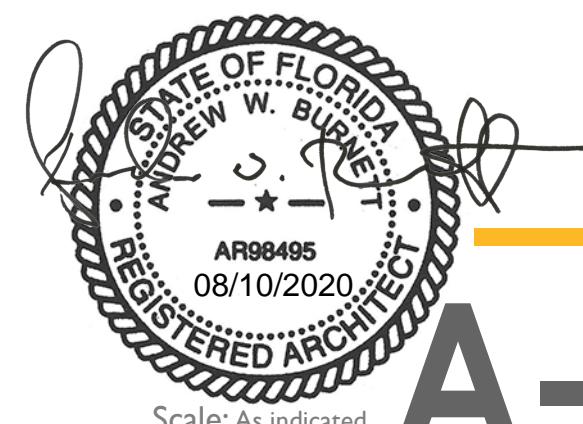
CENTRAL TOWER



DRB SUBMITTAL

08.03.2017

Revision



Copyright Reserved

Note: When printed on 11 x 17 paper scale is
halved

A-N102A

FLAMINGO

1420 BAY ROAD, MIAMI BEACH

Stantec Architecture Inc - AA26000733
Andrew Burnett Lic. # AR98495

Stantec Architecture Inc.
One Biscayne Tower Suite 1670
2 South Biscayne Boulevard
Miami, FL 33131-1804
Tel: (305) 482-8700 / Fax: (305) 482-8770