

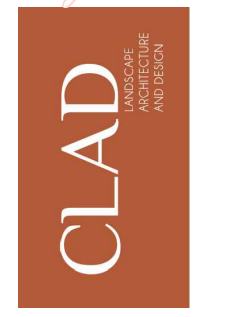
- 2142 BAY AVE. -  
 MIAMI BEACH, FL  
 LANDSCAPE CAP FINAL SUBMITTAL SET  
 SHEET INDEX

Legend		x = Sheet submitted		* = Sheet revised	
SHEET #		CAP 1ST SUBMITTAL (07/20/2020)	CAP FINAL SUBMITTAL (08/10/2020)		
L-000	COVER SHEET	x	*	x	
L-100	TREE DISPOSITION PLAN AND SCHEDULE	x		x	
L-101	TREE MITIGATION PLAN	x	*	x	
L-102	TREE MITIGATION SCHEDULE	x	*	x	
L-200	ILLUSTRATIVE PLAN 1ST FLOOR	x	*	x	
L-201	HARDSCAPE PLAN 1ST FLOOR	x	*	x	
L-500	CANOPY PLANTING PLAN AND SCHEDULE 1ST FLOOR	x	*	x	
L-501	UNDERSTORY PLANTING PLAN AND SCHEDULE 1ST FLOOR	x	*	x	
L-502	LANDSCAPE LEGEND AND OPEN SPACE DIAGRAM	x	*	x	
	OVERALL PLANT SELECTION/IMAGES	x		x	

**KODA**  
 350 Lincoln Rd. #5026  
 Miami Beach, FL 33139  
 info@kodamiami.com  
 305.359.3669

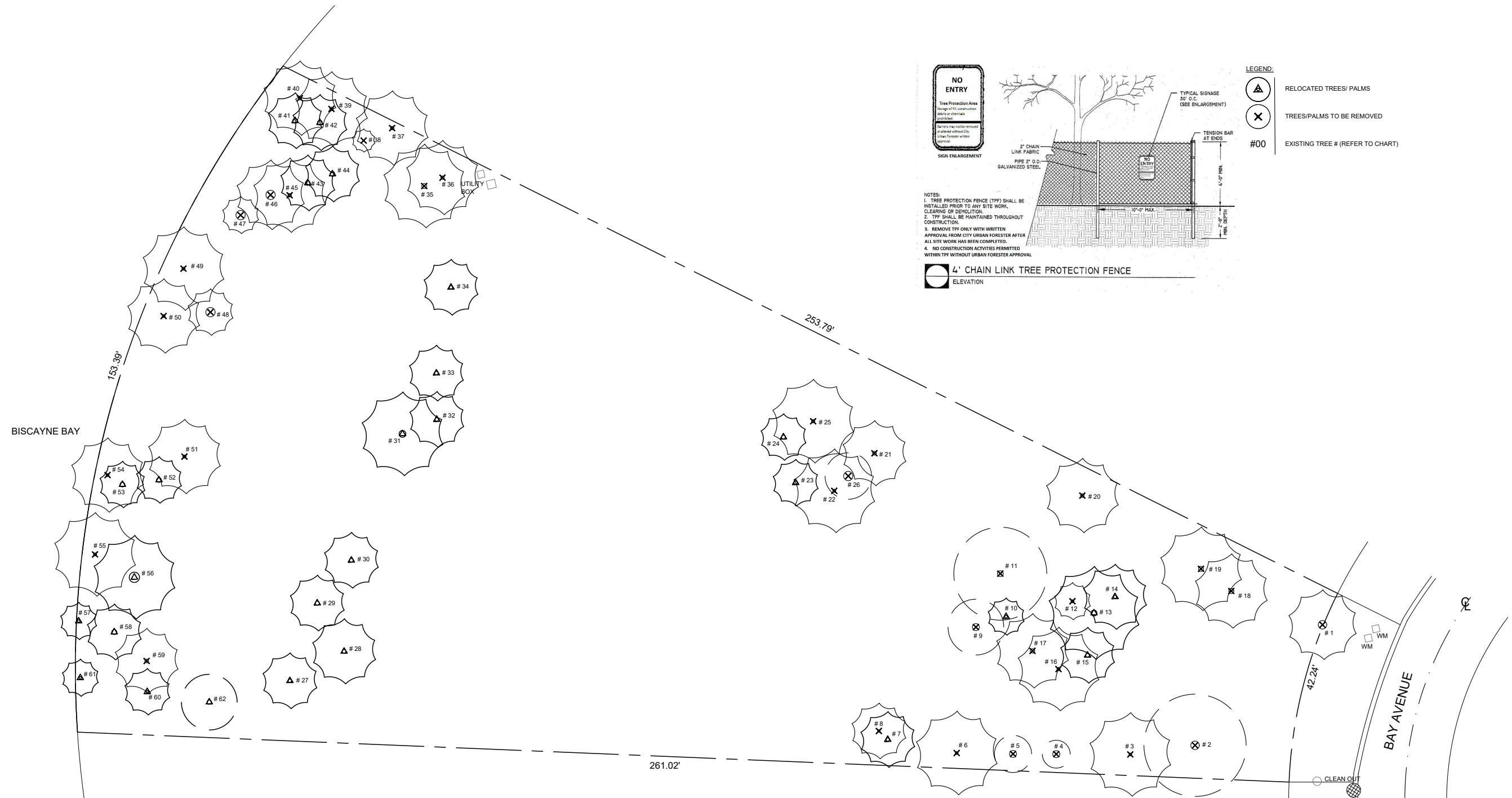
Sunset Island Residence  
 2142 Bay Ave Miami Beach, FL 33140  
 Final Submission 7-10-2020  
 NOT FOR CONSTRUCTION

Carolina Monteiro  
 Digitally signed by Carolina Monteiro  
 Date: 2020.08.09 20:56:39 -04'00'



Scale	N.T.S.
Issue Date	08/10/2020
Project #	2014

COVER SHEET  
 L-000

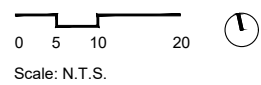


TREE DISPOSITION SCHEDULE - 2142 BAY AVE.

#	COMMON NAME	SCIENTIFIC NAME	DBH (IN)	HEIGHT (FT)	SPREAD (FT)	CONDITION	DISPOSITION
1	ARECA PALM	DYPSIS LUTESCENS	CLUSTER	20	15	GOOD	TO REMOVE
2	MANGO	MANGIFERA INDICA	22	28	33	GOOD	TO REMOVE
3	COCONUT PALM	COCOS NUCIFERA	7	32	18	GOOD	TO REMOVE
4	WHITE BIRD-OF-PARADISE	STRELITZIA NICOLAI	CLUSTER	8	6	GOOD	TO REMOVE
5	WHITE BIRD-OF-PARADISE	STRELITZIA NICOLAI	CLUSTER	12	8	GOOD	TO REMOVE
6	COCONUT PALM	COCOS NUCIFERA	7.5	35	18	GOOD	TO REMOVE
7	MONTGOMERY PALM	VEITCHIA ARECINA	8.5	32	12	FAIR	TO RELOCATE
8	MONTGOMERY PALM	VEITCHIA ARECINA	6.5	23	12	POOR	TO REMOVE
9	WHITE BIRD-OF-PARADISE	STRELITZIA NICOLAI	CLUSTER	15	12	FAIR	TO REMOVE
10	PONYTAIL PALM	BEAUCARNEA RECURVATA	7	12	8	GOOD	TO RELOCATE
11	AVOCADO	PERSEA AMERICANA	15	28	20	FAIR	TO REMOVE
12	MONTGOMERY PALM	VEITCHIA ARECINA	8	32	8	POOR	TO REMOVE
13	BISMARCK PALM	BISMARCKIA NOBILIS	15	23	20	GOOD	TO RELOCATE
14	MONTGOMERY PALM	VEITCHIA ARECINA	8	40	14	GOOD	TO RELOCATE
15	MONTGOMERY PALM	VEITCHIA ARECINA	9.5	40	12	FAIR	TO RELOCATE
16	COCONUT PALM	COCOS NUCIFERA	8.5	30	18	GOOD	TO REMOVE
17	COCONUT PALM	COCOS NUCIFERA	11.5	43	16	FAIR	TO REMOVE
18	COCONUT PALM	COCOS NUCIFERA	13	40	16	FAIR	TO REMOVE
19	COCONUT PALM	COCOS NUCIFERA	13	35	18	FAIR	TO REMOVE
20	COCONUT PALM	COCOS NUCIFERA	9.5	35	16	FAIR	TO REMOVE
21	COCONUT PALM	COCOS NUCIFERA	10	40	14	POOR	TO REMOVE
22	COCONUT PALM	COCOS NUCIFERA	8	35	18	GOOD	TO REMOVE
23	MONTGOMERY PALM	VEITCHIA ARECINA	8.5	35	10	FAIR	TO RELOCATE
24	MONTGOMERY PALM	VEITCHIA ARECINA	10	40	10	FAIR	TO RELOCATE
25	COCONUT PALM	COCOS NUCIFERA	8.5	32	18	FAIR	TO REMOVE
26	WHITE BIRD-OF-PARADISE	STRELITZIA NICOLAI	CLUSTER	10	10	GOOD	TO REMOVE
27	MONTGOMERY PALM	VEITCHIA ARECINA	8.5	36	12	GOOD	TO RELOCATE
28	MONTGOMERY PALM	VEITCHIA ARECINA	9.5	38	14	GOOD	TO RELOCATE
29	MONTGOMERY PALM	VEITCHIA ARECINA	10.5	38	12	GOOD	TO RELOCATE
30	MONTGOMERY PALM	VEITCHIA ARECINA	9.5	38	12	GOOD	TO RELOCATE
31	ROYAL PALM	ROYSTONEA REGIA	17.5	40	18	FAIR	TO RELOCATE

32	MONTGOMERY PALM	VEITCHIA ARECINA	9	38	12	FAIR	TO RELOCATE
33	MONTGOMERY PALM	VEITCHIA ARECINA	9	38	12	FAIR	TO RELOCATE
34	MONTGOMERY PALM	VEITCHIA ARECINA	8.5	35	12	FAIR	TO RELOCATE
35	COCONUT PALM	COCOS NUCIFERA	13	35	18	GOOD	TO REMOVE
36	COCONUT PALM	COCOS NUCIFERA	9	38	16	FAIR	TO REMOVE
37	COCONUT PALM	COCOS NUCIFERA	9	30	16	FAIR	TO REMOVE
38	FLORIDA THATCH PALM	THRINAX RADIATA	3.5	10	5	POOR	TO REMOVE
39	COCONUT PALM	COCOS NUCIFERA	9	30	16	GOOD	TO REMOVE
40	COCONUT PALM	COCOS NUCIFERA	8.5	30	16	GOOD	TO REMOVE
41	CHRISTMAS PALM	ADONIDIA MERRILLII	6.6	15	12	GOOD	TO RELOCATE
42	CHRISTMAS PALM	ADONIDIA MERRILLII	6.6	15	12	GOOD	TO RELOCATE
43	CHRISTMAS PALM	ADONIDIA MERRILLII	6.6	15	12	GOOD	TO RELOCATE
44	CHRISTMAS PALM	ADONIDIA MERRILLII	6.6	15	12	GOOD	TO RELOCATE
45	COCONUT PALM	COCOS NUCIFERA	9	35	16	GOOD	TO REMOVE
46	WHITE BIRD-OF-PARADISE	STRELITZIA NICOLAI	CLUSTER	12	15	GOOD	TO REMOVE
47	WHITE BIRD-OF-PARADISE	STRELITZIA NICOLAI	CLUSTER	10	8	GOOD	TO REMOVE
48	WHITE BIRD-OF-PARADISE	STRELITZIA NICOLAI	CLUSTER	10	10	GOOD	TO REMOVE
49	COCONUT PALM	COCOS NUCIFERA	8	30	18	FAIR	TO REMOVE
50	COCONUT PALM	COCOS NUCIFERA	7.5	26	16	FAIR	TO REMOVE
51	COCONUT PALM	COCOS NUCIFERA	8	38	16	FAIR	TO REMOVE
52	CHRISTMAS PALM	ADONIDIA MERRILLII	6.6	14	10	GOOD	TO RELOCATE
53	CHRISTMAS PALM	ADONIDIA MERRILLII	6.6	14	10	GOOD	TO RELOCATE
54	COCONUT PALM	COCOS NUCIFERA	8	26	16	POOR	TO REMOVE
55	COCONUT PALM	COCOS NUCIFERA	8	32	18	GOOD	TO REMOVE
56	CANARY ISLAND DATE PALM	PHOENIX CANARIENSIS	26.5	15	18	GOOD	TO RELOCATE
57	CHRISTMAS PALM	ADONIDIA MERRILLII	6.5	14	8	FAIR	TO RELOCATE
58	TRIANGLE PALM	DYPSIS DECARYI	12.5	15	12	GOOD	TO RELOCATE
59	QUEEN PALM	SYAGRUS ROMANZOFFIANA	9.5	30	14	POOR	TO REMOVE
60	CHRISTMAS PALM	ADONIDIA MERRILLII	6	14	10	GOOD	TO RELOCATE
61	CHRISTMAS PALM	ADONIDIA MERRILLII	6	14	8	FAIR	TO RELOCATE
62	FRANGIPANI	PLUMERIA SPP.	5.6	12	12	FAIR	TO RELOCATE

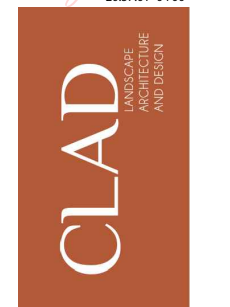
Note: See arborist report for detailed information on the trees



**KODA**  
 350 Lincoln Rd. #5026  
 Miami Beach, FL 33139  
 info@kodamiami.com  
 305.359.3669

Sunset Island Residence  
 2142 Bay Ave Miami Beach, FL 33140  
 Final Submission 7-10-2020  
 NOT FOR CONSTRUCTION

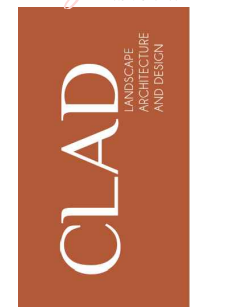
Digitally signed by Carolina Monteiro  
 Date: 2020.08.09 20:57:01 -04'00'



Scale	N.T.S.
Issue Date	08/10/2020
Project #	2014

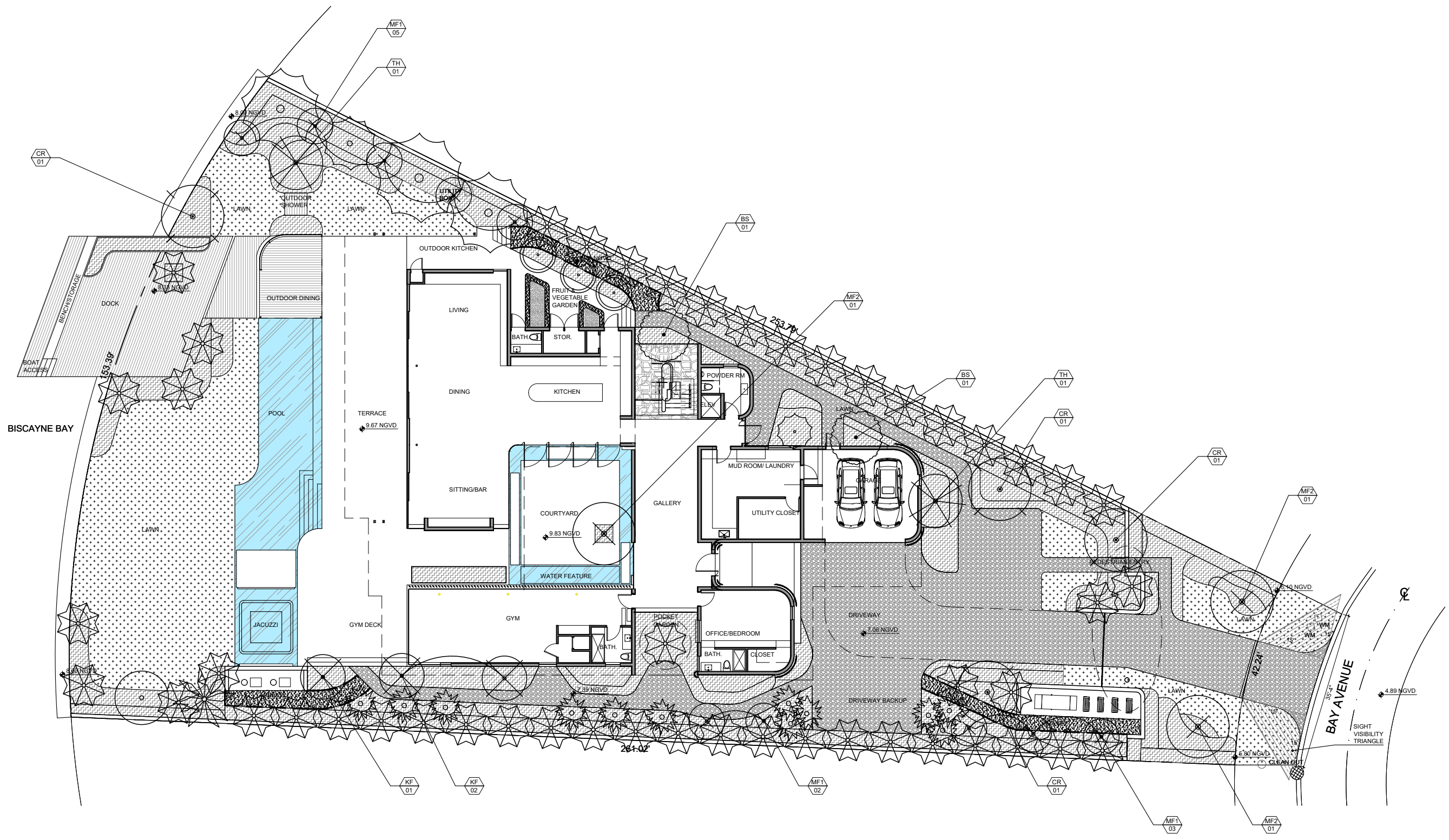
**TREE DISPOSITION PLAN AND SCHEDULE**  
**L-100**

Digitally signed by Carolina Monteiro  
 Date: 2020.08.09 20:57:13 -04'00'

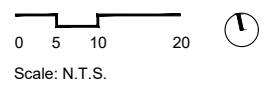


Scale	N.T.S.
Issue Date	08/10/2020
Project #	2014

**TREE MITIGATION PLAN**  
**L-101**



LEGEND:  
 PROPOSED TREES/ PALMS





Sunset Island Residence

2142 Bay Ave Miami Beach, FL 33140

Final Submission 7-10-2020  
 NOT FOR CONSTRUCTION

**TREE MITIGATION SCHEDULE - 2142 BAY AVE.**

#	COMMON NAME	SCIENTIFIC NAME	DBH (IN)	HEIGHT (FT)	SPREAD (FT)	CONDITION	DISPOSITION	DBH (IN) TREES REMOVED	PALMS REMOVED
1	ARECA PALM	DYSPIS LUTESCENS	CLUSTER	20	15	GOOD	TO REMOVE		1
2	MANGO	MANGIFERA INDICA		22	28	33	GOOD	TO REMOVE	22
3	COCONUT PALM	COCOS NUCIFERA		7	32	18	GOOD	TO REMOVE	1
4	WHITE BIRD-OF-PARADISE	STRELITZIA NICOLAI	CLUSTER	8	6	GOOD	TO REMOVE	N/A	
5	WHITE BIRD-OF-PARADISE	STRELITZIA NICOLAI	CLUSTER	12	8	GOOD	TO REMOVE	N/A	
6	COCONUT PALM	COCOS NUCIFERA		7.5	35	18	GOOD	TO REMOVE	1
8	MONTGOMERY PALM	VEITCHIA ARECINA		6.5	23	12	POOR	TO REMOVE	1
9	WHITE BIRD-OF-PARADISE	STRELITZIA NICOLAI	CLUSTER	15	12	FAIR	TO REMOVE	N/A	
11	AVOCADO	PERSEA AMERICANA		15	28	20	FAIR	TO REMOVE	15
12	MONTGOMERY PALM	VEITCHIA ARECINA		8	32	8	POOR	TO REMOVE	1
16	COCONUT PALM	COCOS NUCIFERA		8.5	30	18	GOOD	TO REMOVE	1
17	COCONUT PALM	COCOS NUCIFERA		11.5	43	16	FAIR	TO REMOVE	1
18	COCONUT PALM	COCOS NUCIFERA		13	40	16	FAIR	TO REMOVE	1
19	COCONUT PALM	COCOS NUCIFERA		13	35	18	FAIR	TO REMOVE	1
20	COCONUT PALM	COCOS NUCIFERA		9.5	35	16	FAIR	TO REMOVE	1
21	COCONUT PALM	COCOS NUCIFERA		10	40	14	POOR	TO REMOVE	1
22	COCONUT PALM	COCOS NUCIFERA		8	35	18	GOOD	TO REMOVE	1
25	COCONUT PALM	COCOS NUCIFERA		8.5	32	18	FAIR	TO REMOVE	1
26	WHITE BIRD-OF-PARADISE	STRELITZIA NICOLAI	CLUSTER	10	10	GOOD	TO REMOVE	N/A	
35	COCONUT PALM	COCOS NUCIFERA		13	35	18	GOOD	TO REMOVE	1
36	COCONUT PALM	COCOS NUCIFERA		9	38	16	FAIR	TO REMOVE	1
37	COCONUT PALM	COCOS NUCIFERA		9	30	16	FAIR	TO REMOVE	1
38	FLORIDA THATCH PALM	THRINAX RADIATA		3.5	10	5	POOR	TO REMOVE	1
39	COCONUT PALM	COCOS NUCIFERA		9	30	16	GOOD	TO REMOVE	1
40	COCONUT PALM	COCOS NUCIFERA		8.5	30	16	GOOD	TO REMOVE	1
45	COCONUT PALM	COCOS NUCIFERA		9	35	16	GOOD	TO REMOVE	1
46	WHITE BIRD-OF-PARADISE	STRELITZIA NICOLAI	CLUSTER	12	15	GOOD	TO REMOVE	N/A	
47	WHITE BIRD-OF-PARADISE	STRELITZIA NICOLAI	CLUSTER	10	8	GOOD	TO REMOVE	N/A	
48	WHITE BIRD-OF-PARADISE	STRELITZIA NICOLAI	CLUSTER	10	10	GOOD	TO REMOVE	N/A	
49	COCONUT PALM	COCOS NUCIFERA		8	30	18	FAIR	TO REMOVE	1
50	COCONUT PALM	COCOS NUCIFERA		7.5	26	16	FAIR	TO REMOVE	1
51	COCONUT PALM	COCOS NUCIFERA		8	38	16	FAIR	TO REMOVE	1
54	COCONUT PALM	COCOS NUCIFERA		8	26	16	POOR	TO REMOVE	1
55	COCONUT PALM	COCOS NUCIFERA		8	32	18	GOOD	TO REMOVE	1
59	QUEEN PALM	SYAGRUS ROMANZOFFIANA		9.5	30	14	POOR	TO REMOVE	1
								<b>37</b>	<b>26</b>

Note: See arborist report for detailed information on the trees

37" DBH + 26 TREES FOR THE REMOVAL OF 26 PALMS, EQUIVALENT TO:  
 40 REPLACEMENT TREES (MIN. 2" CALIPER, 6' CANOPY, 12' HT), OR  
 20 REPLACEMENT TREES (MIN. 4" CALIPER, 8' CANOPY, 16' HT)  
 12 TREES MUST BE NATIVES MIN. 10' HT AND 1.5" DBH (30% OF 12' REPLACEMENT TREES)

SPECIES DIVERSITY:  
 31-40: 5 SPECIES

THE CODE (NEW ORDINANCE) IS BEING MET BY USING:  
 22 TREES (MIN. 4" CALIPER, 8' CANOPY, 16' HT)

**TREES USED FOR MITIGATION**

SYM	QTY	SCIENTIFIC NAME	COMMON NAME	NATIVE	NOTES
TH	2	<i>Tabebuia heterophylla</i>	PINK TRUMPET TREE	N	minimum 16' HT; 4" DBH
CR	4	<i>Clusia rosea</i>	AUTOGRAPH TREE	Y	minimum 16' HT; 4" DBH
MF1	10	<i>Myrcianthes fragrans</i>	SIMPSON'S STOPPER TREE	Y	minimum 16' HT; 4" DBH
MF2	1	<i>Myrcianthes fragrans</i>	SIMPSON'S STOPPER TREE	Y	minimum 16' HT; 4" DBH
BS	2	<i>Bursera simaruba</i>	GUMBO LIMBO	Y	minimum 16' HT; 4" DBH
KF	3	<i>Krugiodendron ferreum</i>	BLACK IRONWOOD	Y	minimum 16' HT; 4" DBH
<b>Total:</b>	22	TREES USED FOR MITIGATION DIVIDED IN 5 SPECIES			

Carolina Monteiro  
 Digitally signed by Carolina Monteiro  
 Date: 2020.08.09 20:57:26 -0400

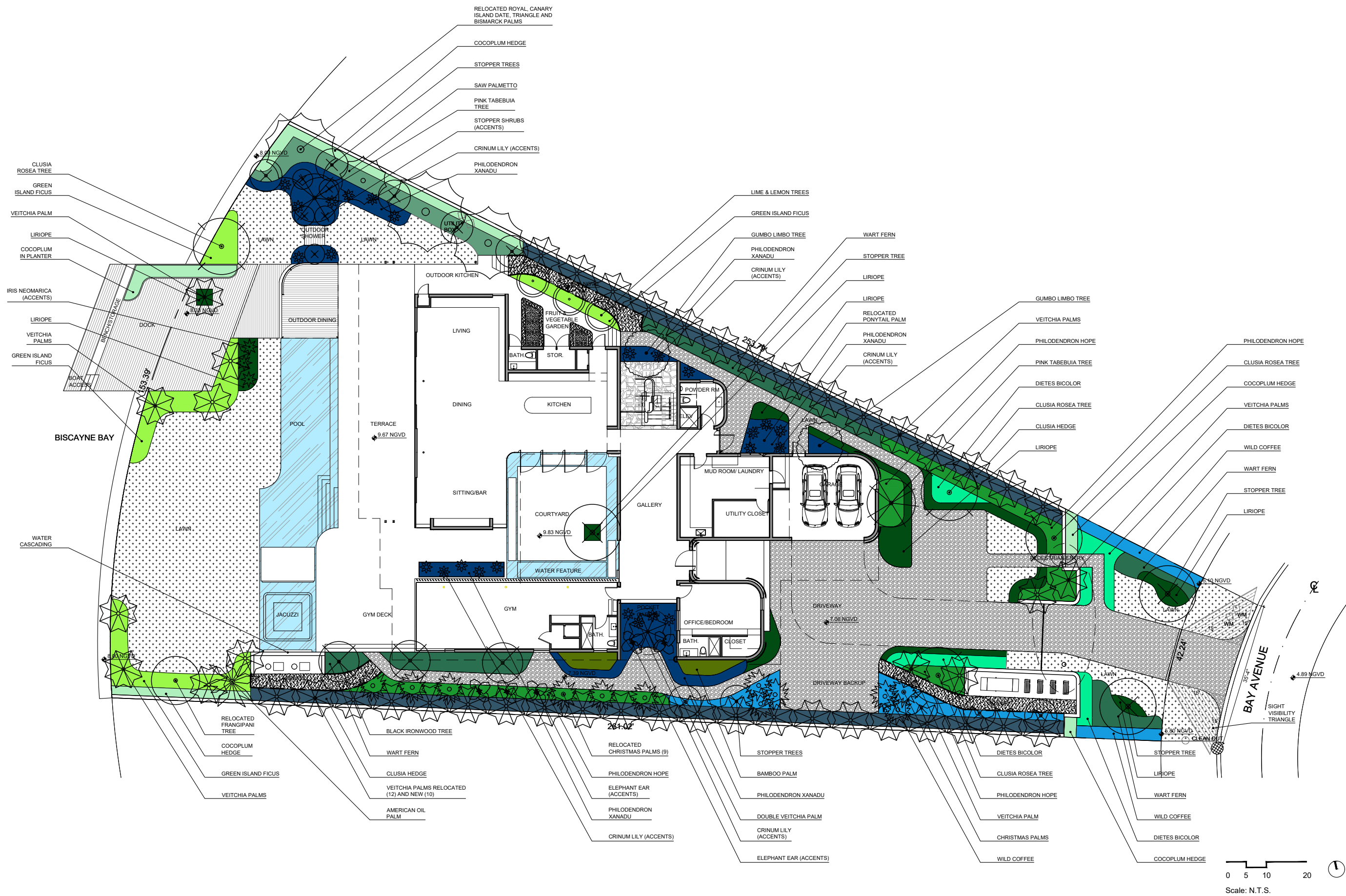


Scale	N.T.S.
Issue Date	08/10/2020
Project #	2014

**TREE MITIGATION SCHEDULE**

**L-102**

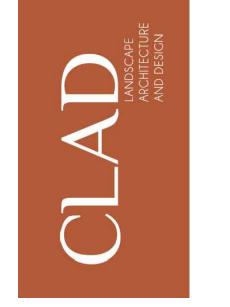




**KODA**  
 350 Lincoln Rd. #5026  
 Miami Beach, FL 33139  
 info@kodamiami.com  
 305.359.3669

Sunset Island Residence  
 2142 Bay Ave Miami Beach, FL 33140  
 Final Submission 7-10-2020  
 NOT FOR CONSTRUCTION

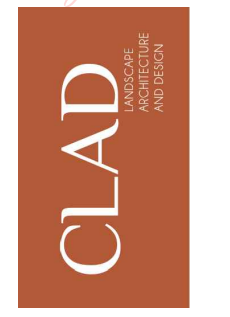
Carolina Monteiro  
 Digitally signed by Carolina Monteiro  
 Date: 2020.08.09 20:57:39 -04'00'



Scale	N.T.S.
Issue Date	08/10/2020
Project #	2014

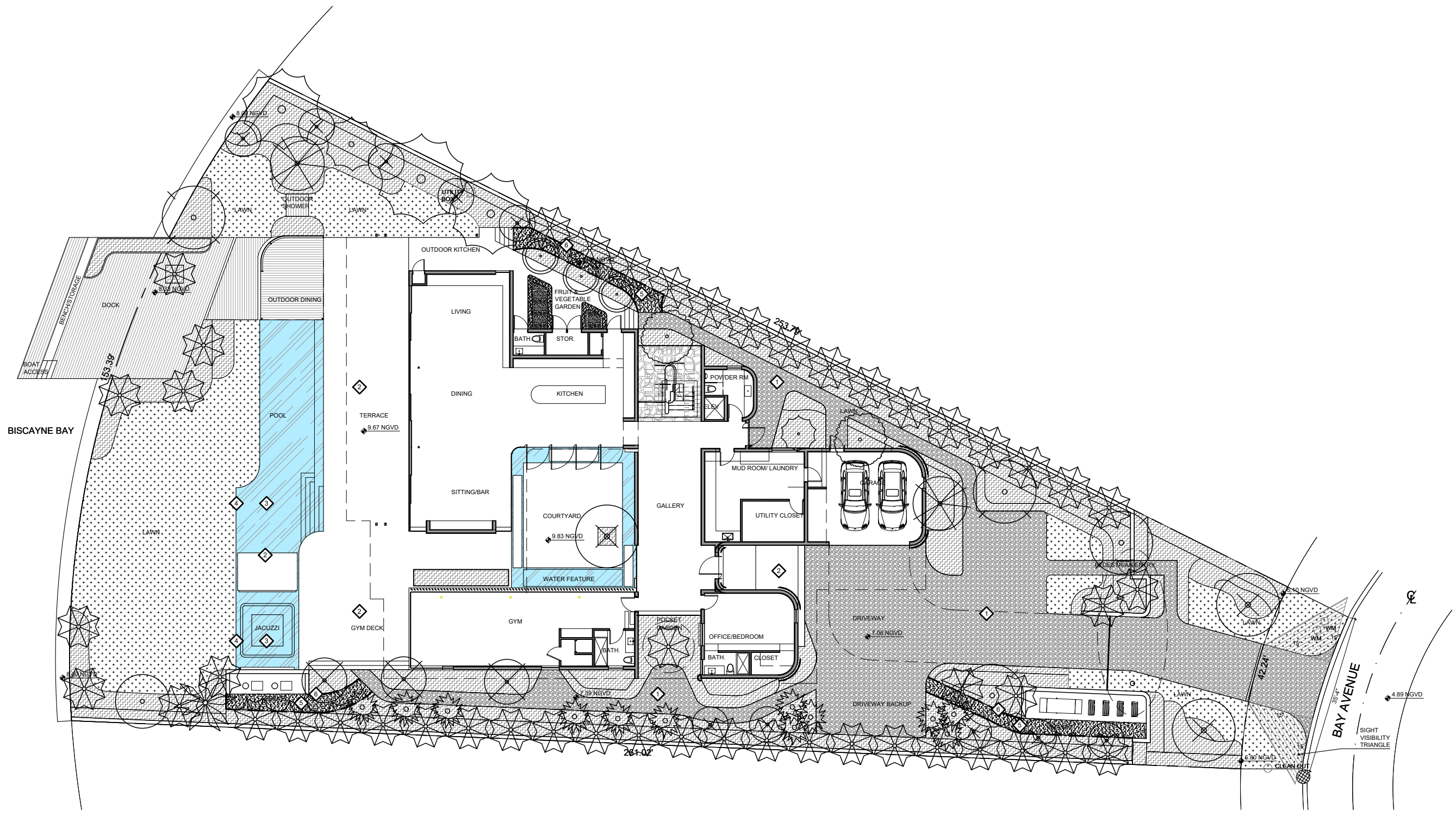
**ILLUSTRATIVE PLAN**  
**1ST FLOOR**  
**L-200**





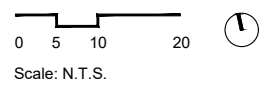
Scale	N.T.S.
Issue Date	08/10/2020
Project #	2014

**HARDSCAPE PLAN 1ST FLOOR**  
**L-201**

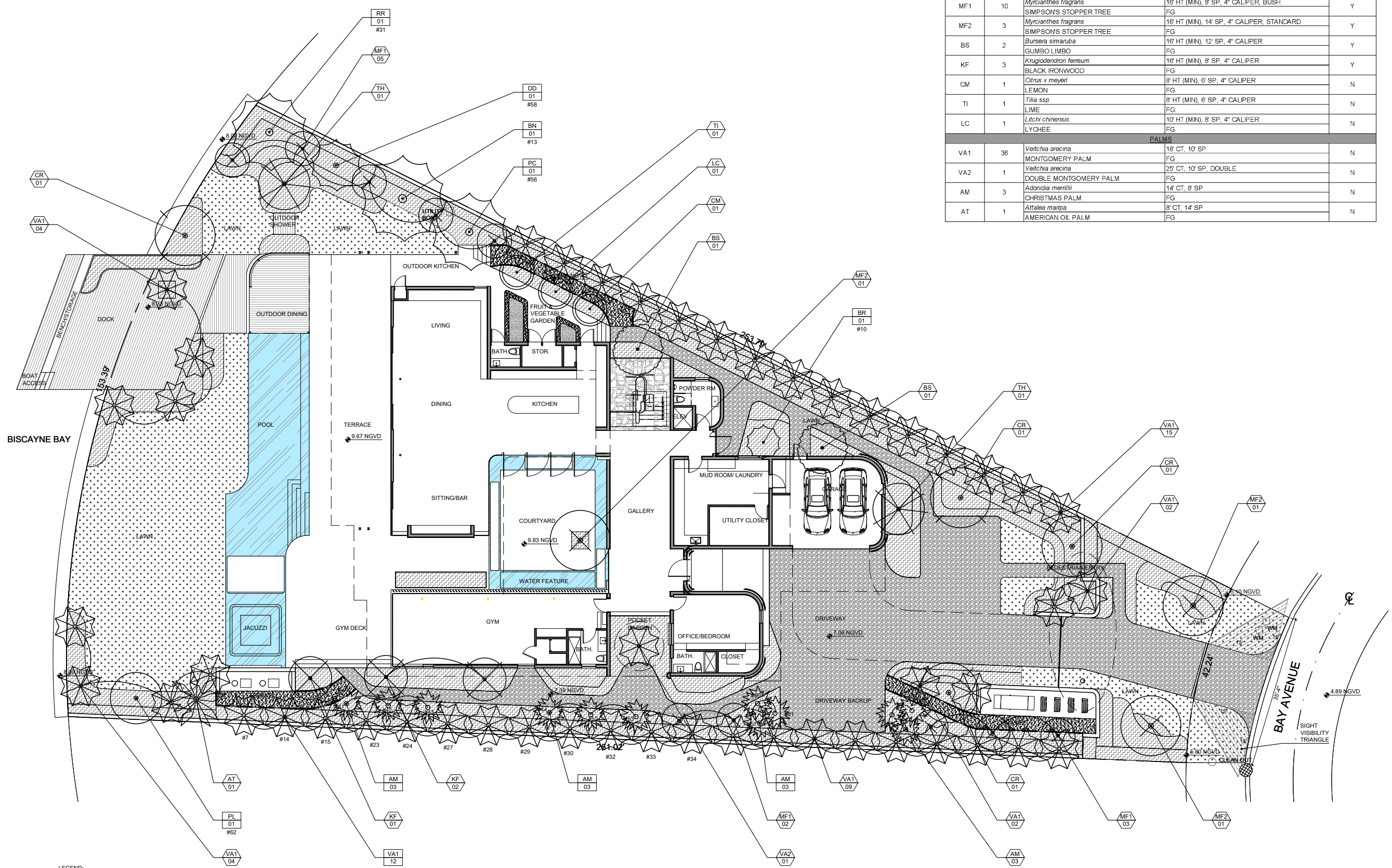


LEGEND:

- 1 DRIVEWAY PAVER
- 2 TILE - MOSA WHITE
- 3 POOL FINISH - FINISH PEBBLESHEEN WITH GLASS
- 4 POOL FINISH - WATERLINE GLASSTINTS TILE
- 5 GRAVEL
- 6 LANDSCAPE EDGING







LANDSCAPE SCHEDULE - CANOPY 1ST FLOOR				
SYMBOL	QTY	PROPOSED MATERIAL	DESCRIPTION AND NOTES	NATIVE
TREES				
TH	2	<i>Tabebuia heterophylla</i> PINK TRUMPET TREE	13' CT, 25' HT, 12" SP, 8-10" CALIPER, SPECIMEN	N
CR	4	<i>Cordia rosea</i> AUTOGRAPH TREE	16' HT, 12-14' SP, 6" CALIPER, SPECIMEN	Y
MF1	10	<i>Myrcianthes fragrans</i> SIMPSON'S STOPPER TREE	16' HT (MIN), 8' SP, 4" CALIPER, BUSH	Y
MF2	3	<i>Myrcianthes fragrans</i> SIMPSON'S STOPPER TREE	16' HT (MIN), 14' SP, 4" CALIPER, STANDARD	Y
BS	2	<i>Bursera simaruba</i> GUMBO LIMBO	16' HT (MIN), 12' SP, 4" CALIPER	Y
KF	3	<i>Krugiodendron ferreum</i> BLACK IRONWOOD	16' HT (MIN), 8' SP, 4" CALIPER	Y
CM	1	<i>Citrus x meyeri</i> LEMON	8' HT (MIN), 6' SP, 4" CALIPER	N
TI	1	<i>Tilia ssp</i> LIME	8' HT (MIN), 6' SP, 4" CALIPER	N
LC	1	<i>Litchi chinensis</i> LYCHEE	10' HT (MIN), 8' SP, 4" CALIPER	N
PALMS				
VA1	36	<i>Veitchia arecina</i> MONTGOMERY PALM	18' CT, 10' SP	N
VA2	1	<i>Veitchia arecina</i> DOUBLE MONTGOMERY PALM	25' CT, 10' SP, DOUBLE	N
AM	3	<i>Adonidia merillii</i> CHRISTMAS PALM	14' CT, 8' SP	N
AT	1	<i>Attalea maripa</i> AMERICAN OIL PALM	8' CT, 14' SP	N

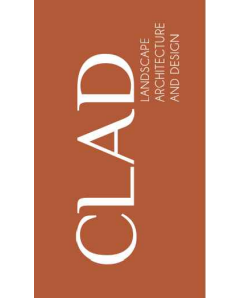
LEGEND:  
 XX  
XX PROPOSED TREES/ PALMS  
 XX  
XX RELOCATED TREES/ PALMS



**KODA**  
 350 Lincoln Rd. #5026  
 Miami Beach, FL 33139  
 info@kodamiami.com  
 305.359.3669

Sunset Island Residence  
 2142 Bay Ave Miami Beach, FL 33140  
 Final Submission 7-10-2020  
 NOT FOR CONSTRUCTION

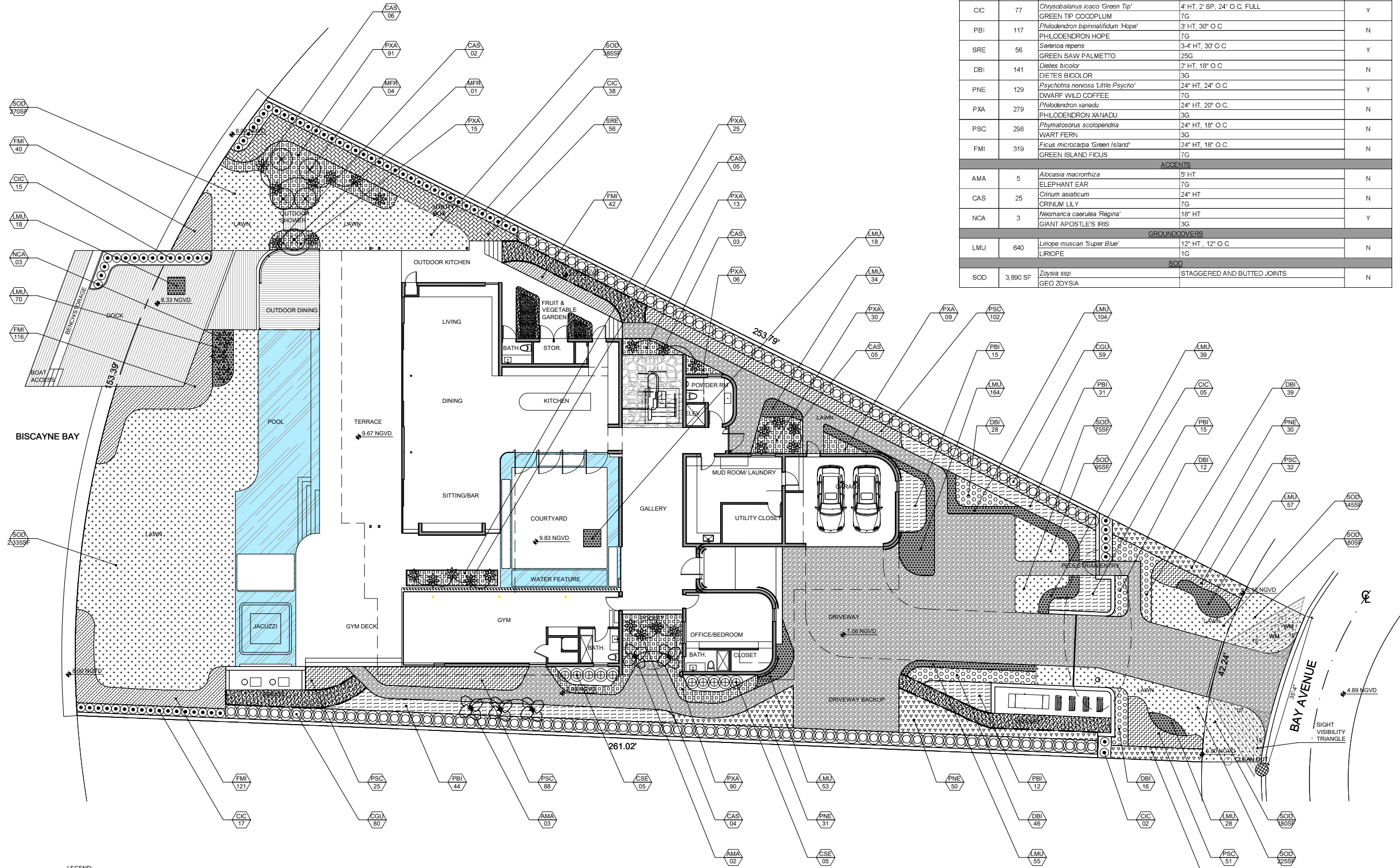
Carolina Monteiro  
 Digitally signed by Carolina Monteiro  
 Date: 2020.08.09 20:58:06 -0400



Scale N.T.S.  
 Issue Date 08/10/2020  
 Project # 2014

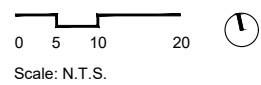
CANOPY PLANTING PLAN AND SCHEDULE 1ST FLOOR  
**L-500**





LANDSCAPE SCHEDULE - UNDERSTORY 1ST FLOOR				
SHURBS				
MFR	5	<i>Myrcianthes fragrans</i> SIMPSON'S STOPPER TREE	7' HT, 36" SP, FULL 100G	Y
CSE	10	<i>Chamaedorea sefrizii</i> BAMBOO PALM	6' HT, 3' SP, 30" O.C 7G	N
CGU	139	<i>Clusia guttifera</i> CLUSIA	8' HT, 3' SP, 30" O.C, FULL 15G	N
CIC	77	<i>Chrysobalanus icaco</i> 'Green Tip' GREEN TIP COCOPLUM	4' HT, 2' SP, 24" O.C, FULL 7G	Y
PBI	117	<i>Philodendron bipinnatifidum</i> 'Hope' PHILODENDRON HOPE	3' HT, 30" O.C 7G	N
SRE	56	<i>Sarcocaulis repens</i> GREEN SAW PALMETTO	3-4' HT, 30" O.C 25G	Y
DBI	141	<i>Dietes bicolor</i> DIETES BICOLOR	2' HT, 18" O.C 3G	N
PNE	129	<i>Psychotria nervosa</i> 'Little Psycho' DWARF WILD COFFEE	24" HT, 24" O.C 7G	Y
PXA	279	<i>Philodendron xanadu</i> PHILODENDRON XANADU	24" HT, 20" O.C 3G	N
PSC	298	<i>Phymatosorus scolopendria</i> WART FERN	24" HT, 18" O.C 3G	N
FMI	319	<i>Ficus microcarpa</i> 'Green Island' GREEN ISLAND FICUS	24" HT, 18" O.C 7G	N
ACCENTS				
AMA	5	<i>Alocasia macrorrhiza</i> ELEPHANT EAR	5' HT 7G	N
CAS	25	<i>Citrus asiaticum</i> CRINUM LILY	24" HT 7G	N
NCA	3	<i>Neomarica caerulea</i> 'Regina' GIANT APOSTLE'S IRIS	18" HT 3G	Y
GROUNDCOVERS				
LMU	640	<i>Liriope muscari</i> 'Super Blue' LIRIOPE	12" HT, 12" O.C 1G	N
SOD				
SOD	3,890 SF	<i>Zoysia ssp</i> GEO ZOYSIA	STAGGERED AND BUTTED JOINTS	N

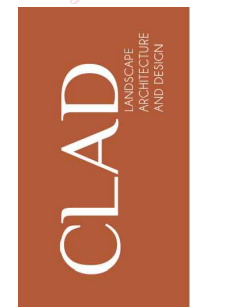
- LEGEND:
- PROPOSED PLANTS
  - BLACK METAL EDGING 4" = 195 L.F.
  - GRAY GRANITE GRAVEL 3/8" = 470 SQFT



**KODA**  
 350 Lincoln Rd. #5026  
 Miami Beach, FL 33139  
 info@kodamiami.com  
 305.359.3669

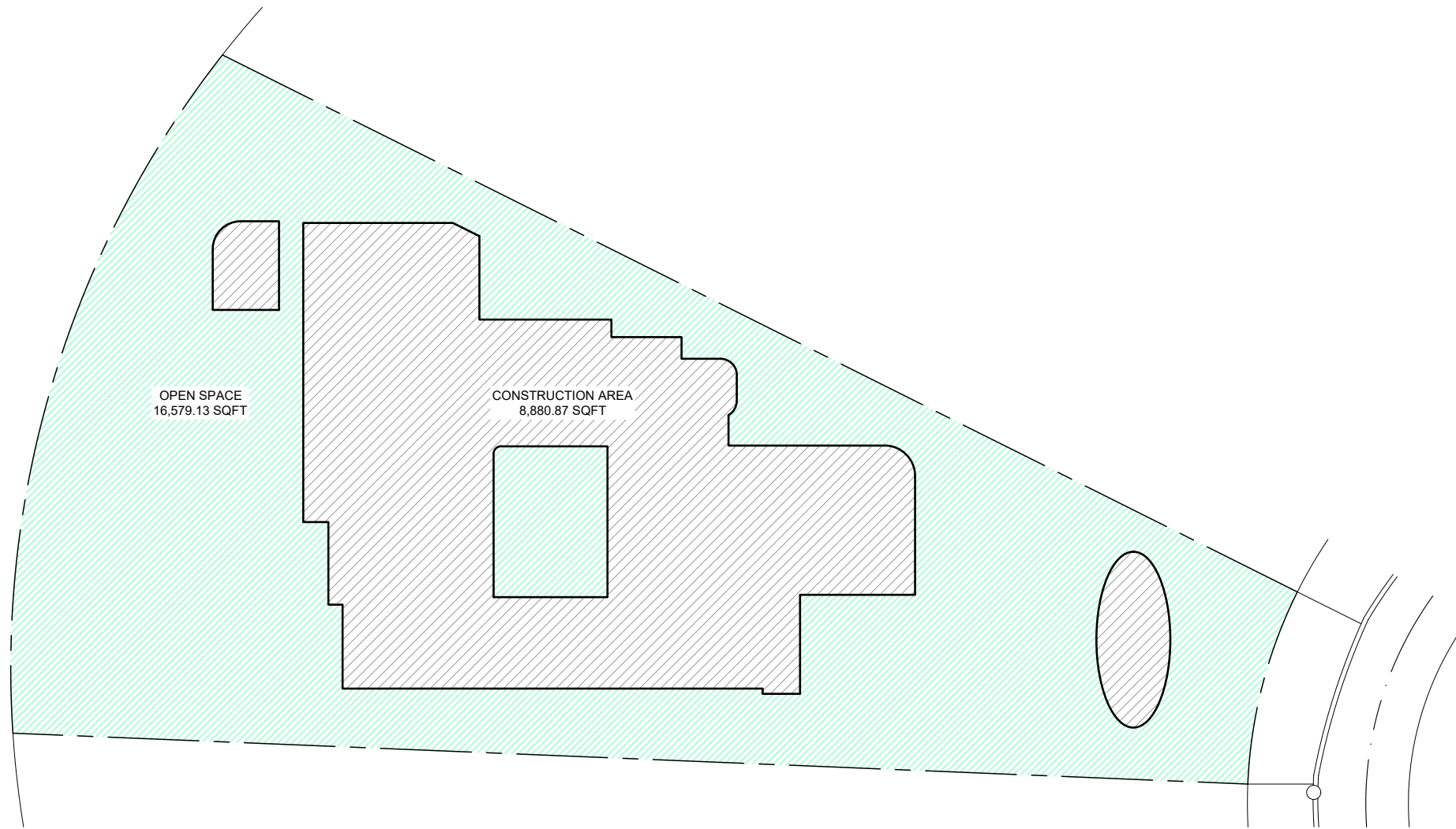
Sunset Island Residence  
 2142 Bay Ave Miami Beach, FL 33140  
 Final Submission 7-10-2020  
 NOT FOR CONSTRUCTION

Carolina Monteiro  
 Digitally signed by Carolina Monteiro  
 Date: 2020.08.09 20:58:20 -04'00'



Scale	N.T.S.
Issue Date	08/10/2020
Project #	2014

**UNDERSTORY  
 PLANTING  
 PLAN AND  
 SCHEDULE  
 1ST FLOOR  
 L-501**

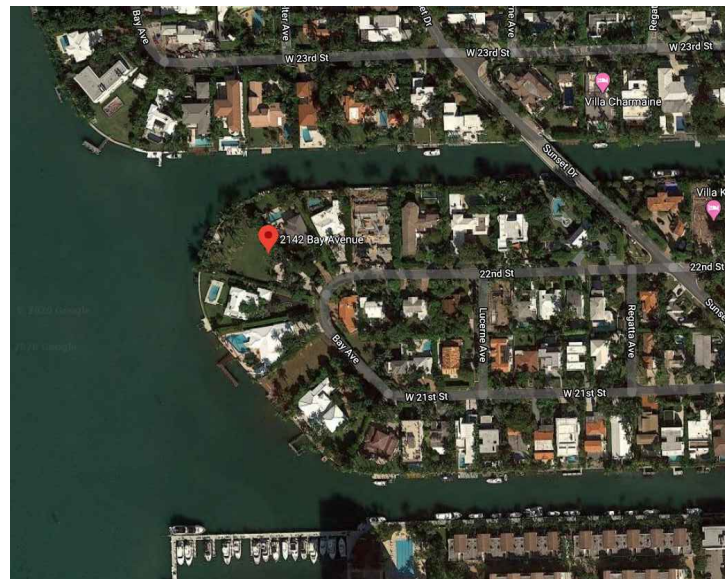


DIAGRAM

OPEN SPACE AREA:

LOT AREA - CONSTRUCTION AREA =  
 $25,460 - 8,880.87 = 16,579.13$  SQFT

LOCATION MAP



CITY OF MIAMI BEACH  
 LANDSCAPE LEGEND

INFORMATION REQUIRED TO BE PERMANENTLY AFFIXED TO PLANS  
 Zoning District RS-3 Lot Area 25,460 Acres 0.58

	REQUIRED/ ALLOWED	PROVIDED
<b>OPEN SPACE</b>		
A. Square feet of required Open Space as indicated on site plan: Lot Area = <u>25,460</u> s.f. x <u>50</u> % = <u>12,730</u> s.f.	12,730	16,579.13
B. Square feet of parking lot open space required as indicated on site Number of parking spaces <u>N/A</u> x 10 s.f. parking space =	N/A	N/A
C. Total square feet of landscaped open space required: A+B=	12,730	16,579.13

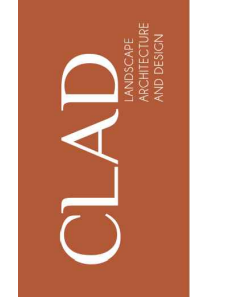
<b>LAWN AREA CALCULATION</b>		
A. Square feet of landscaped open space required	12,730	16,579.13
B. Maximum lawn area (sod) permitted= <u>50</u> % x <u>12,730</u> s.f.	6,365	3,890

<b>TREES</b>		
A. Number of trees required per lot or net lot acre, less existing number of trees meeting minimum requirements= <u>5</u> trees x <u>21</u> net lot acres - (1) number of existing	25	25
B. % Natives required: Number of trees provided x 30% =	5	20
C. % Low maintenance / drought and salt tolerant required: Number of trees provided x 50% =	13	20
D. Street Trees (maximum average spacing of 20' o.c.) <u>35'</u> linear feet along street divided by 20' =	2	2
E. Street tree species allowed directly beneath power lines: (maximum average spacing of 20' o.c.): <u>N/A</u> linear feet along street divided by 20' =	N/A	N/A

<b>SHRUBS</b>		
A. Number of shrubs required: Sum of lot and street trees required x 12=	324	326
B. % Native shrubs required: Number of shrubs provided x 50% =	163	185

<b>LARGE SHRUBS OR SMALL TREES</b>		
A. Number of large shrubs or small trees required: Number of required shrubs x 10% =	33	77
B. % Native large shrubs or small trees required: Number of large shrubs or small trees provided x 50% =	39	77

Digitally signed  
 by Carolina Monteiro  
 Date: 2020.08.09 20:58:36 -0400



Scale	N.T.S.
Issue Date	08/10/2020
Project #	2014

LANDSCAPE LEGEND AND OPEN SPACE DIAGRAM  
**L-502**

# overall plant selection

---



# overall plant selection

## Existing Palms

Royal Palm  
*(Roystonea regia)*



Montgomery Palm  
*(Veitchia arecina)*



Bismarck Palm  
*(Bismarckia nobilis)*



Canary Island Date Palm  
*(Phoenix canariensis)*





# overall plant selection

## Existing Trees & Palms

Christmas Palm  
(*Adonidia merrillii*)



Triangle Palm  
(*Dypsis decaryi*)



Ponytail Palm  
(*Beaucarnea recurvata*)



Frangipani Tree  
(*Plumeria ssp.*)





# overall plant selection

## Trees

Pink Trumpet Tree  
(*Tabebuia heterophylla*)



Autograph Tree  
(*Clusia rosea*)



Gumbo Limbo Tree  
(*Bursera simaruba*)



Black Ironwood Tree  
(*Krugiodendron ferreum*)



Simpson's Stopper Tree  
(*Myrcianthes fragrans*)





# overall plant selection

## Fruit Trees & Palms

Lychee Tree  
(*Litchi chinensis*)



Lemon Tree  
(*Citrus x meyeri*)



Lime Tree  
(*Tilia ssp.*)



American Oil Palm  
(*Attalea maripa*)





# overall plant selection

## Shrubs

Bamboo Palm  
(*Chamaedorea seifrizii*)



Clusia  
(*Clusia guttifera*)



Green Tip Cocoplum  
(*C. icaco* 'Green Tip')



Philodendron Hope  
(*P. bipinnatifidum*)



Saw Palmetto  
(*Serenoa repens*)





# overall plant selection

## Shrubs

Wild Coffee  
(*Psychotria nervosa*)



African Iris  
(*Dietes bicolor*)



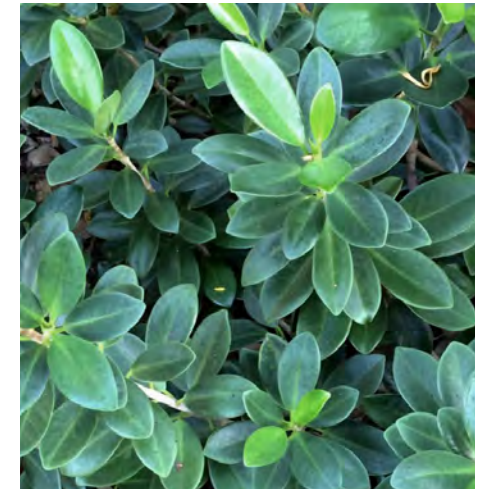
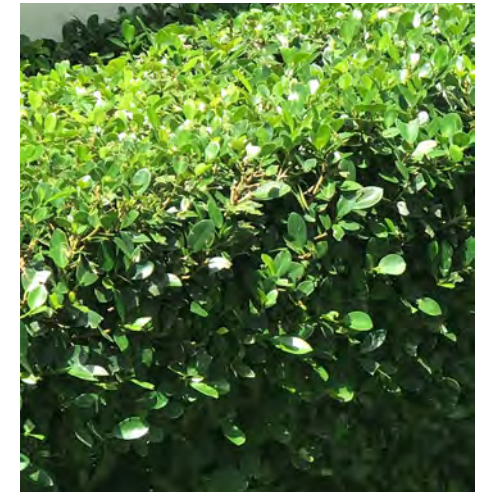
Philodendron Xanadu  
(*Philodendron xanadu*)



Wart Fern  
(*Phymatosorus scolopendria*)



Green Island Ficus  
(*Ficus microcarpa*)





# overall plant selection

## Accents & Groundcovers

Simpson's Stopper  
(*Myrcianthes fragrans*)



Elephant Ear  
(*Alocasia macrorrhiza*)



Crinum Lily  
(*Crinum asiaticum*)



Iris Neomarica  
(*Neomarica caerulea*)



Liriope  
(*Liriope muscari*)

