

TREE MITIGATION CALCULATIONS

TOTAL PALMS REMOVED: 0
 TOTAL DBH INCHES REMOVED: 35.5

Required Mitigation Per Sec. 46-61
 (12) Trees - 12' Ht, 2" DBH, 6' Spread
 or
 (6) Trees - 16' Ht, 4" DBH, 8' Spread

Tree Species Diversity
(2) Required minimum number of species

Provided Mitigation:
 (3) Trees - 12' Ht, 2" DBH, 6' Spread
 and
 (5) Trees - 16' Ht, 4" DBH, 8' Spread

Mitigation shortfall of (0) (2") DBH, trees = (0) to be paid into the City of Miami Beach Tree Preservation Trust Fund.

SEE LANDSCAPE PLANS FOR EXACT SPECIES AND LOCATIONS

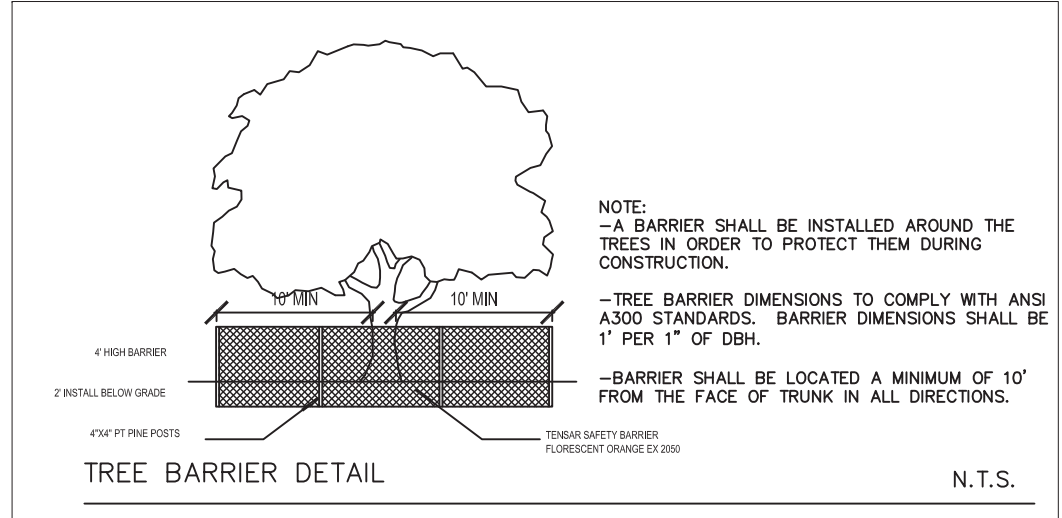
SYMBOL LEGEND

- TREE TO REMAIN
- TREE TO REMOVE
- TREE CANOPY - DIA.

TREE DISPOSITION LEGEND

Trees relocated:	0	Palms removed:	0	Total DBH on-site:	129.5
Trees removed (total):	5	Root pruning:	0	Total removed DBH:	75.5
Prohibited trees removed:	1	Tree Trimming:	0	Total calculated removed DBH:	35.5

Ref. #	Common Name	Scientific Name	DBH (in.)	Height (ft.)	Spread (ft.)	Condition	Status	Prohibited	Palm	Calc. DBH	Spreader	TPZ (ft.)	Plant value
1	Avocado	Persea americana	4.5	18	15	Fair	Remove			4.5			
2	Mahogany Tree	Swietenia mahagoni	38	40	70	Good	Remain				Y		\$28,000
3	Brazilian Pepper	Schinus terebinthifolius	38	25	28	Fair	Remove	Y					
4	Royal Poinciana	Delonix regia	15	30	25	Good	Remain						
5	Strangler Fig	Ficus aurea	28	33	30	Fair	Remove			28	Y		
6	Royal Poinciana	Delonix regia	3	15	10	Fair	Remove			3			
7	Solitaire Palm	Pythosparma elegans	3	12	8	Good	Remove	Y					



1. TREE DISPOSITION PLAN
 SCALE 1/16" = 1'-0"

GAIAS DESIGN
 GAIAS DESIGN INC.
 786.777.8716 gaia@gaiasdesign.com

OWNER
 Jorge M Campodonico
 703.963.4438 jc@citylendinginc.com

LANDSCAPE ARCHITECT
Diego Vanderbiest
 6200 SW 80 ST
 MIAMI, FLORIDA 33143
 (305) 528-4001
 SEAL

Digitally signed by Diego Vanderbiest
 Date: 2020.08.09 14:14:42 -04'00'

DIGEO J. VANDERBIEST
 RLA #6667355

RC
 SEAL

JOHN SACCO AR0004952

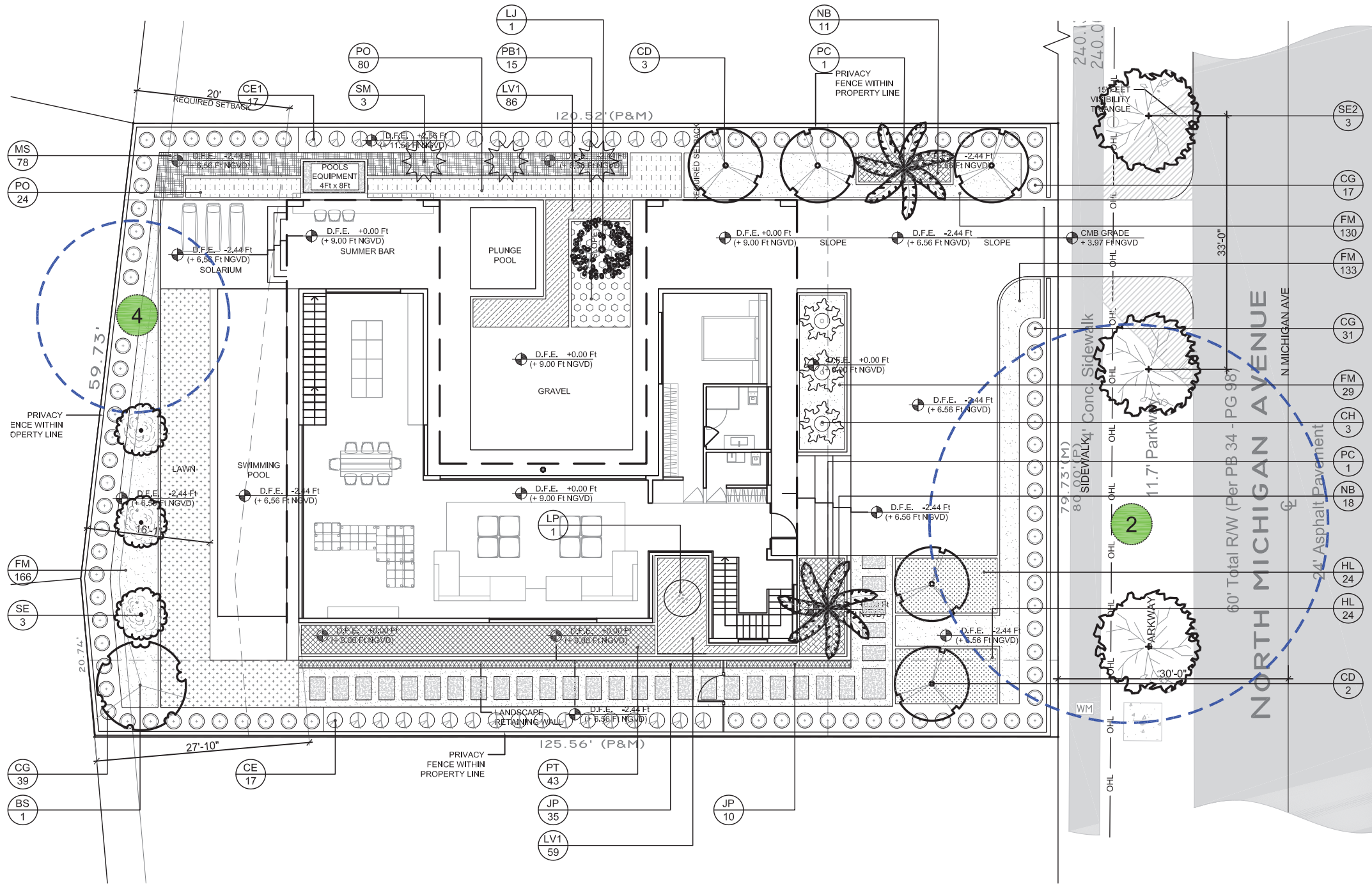
New Single Family Home
4354 N MICHIGAN AVE
MIAMI BEACH, FL 33140

FINAL SUBMITTAL
 DATE: 08/10/2020

THESE PLANS ARE FOR DRB REVIEW ONLY. THEY ARE NOT TO BE CONSTRUED AS CONSTRUCTION DOCUMENTS UNTIL ALL BUILDING DEPARTMENTS APPROVAL ARE OBTAINED

TREE
 DISPOSITION PLAN

DRB L.1



LANDSCAPE SCHEDULE

TREES					
SYMBOL	QUAN.	PROPOSED MATERIAL	DESCRIPTION	NATIVE	WATER NEEDS
CE1	3	*Coccoloba diversiflora GREEN BUTTWOOD	12' HT. X 6" SPR. 2.5" DBH. F.G.	Y	LOW
CD	5	*Coccoloba diversiflora PIGEON PLUM	16' HT. X 6" SPR. 4" DBH. F.G.	Y	LOW
PC	2	*Phoenix canariensis CANARY ISLAND DATE PALM	10' C.T. F.G.	N	LOW
SE	3	*Coccoloba diversiflora SILVER BUTTWOOD	12' HT. X 6" SPR. 2.5" DBH. F.G.	Y	LOW
RS	1	*Bumelia sinuata JUMBO LIMBO	18' HT. X 6" SPR. 4" DBH. F.G.	Y	LOW
WM	1	Liquidambar japonicum JAPANESE PRIVET	12' HT. X 8" SPR. MULTI TRUNK F.G.	N	MEDIUM

SHRUBS					
SYMBOL	QUAN.	PROPOSED MATERIAL	DESCRIPTION	NATIVE	WATER NEEDS
CE1	34	*Coccoloba diversiflora GREEN BUTTWOOD	36" HT. X 24" SPR. / 36" O.C. 7 GAL.	Y	LOW
CG	87	*Clusia guineensis SMALL LEAF CLUSIA	36" HT. X 24" SPR. / 36" O.C. 7 GAL.	Y	MEDIUM
PT	43	Phytolobum lobata CHINESE CHEESEWOOD	18" HT. X 18" SPR. / 24" O.C. 3 GAL.	N	MEDIUM
SM	3	Sabal minor DWARF BLUE-STEM PALMETTO	24" HT. X 18" SPR. 7 GAL.	Y	LOW
LP	1	Cyrtostachys renda LIPSTICK PALM	7" HT. O.A. HEIGHT 15 GAL.	N	MEDIUM

GROUND COVERS					
SYMBOL	QUAN.	PROPOSED MATERIAL	DESCRIPTION	NATIVE	WATER NEEDS
FM	458	Ficus microcarpa "Green Island" GREEN ISLAND FIGUS	15" HT. X 15" SPR. / 15" O.C. 3 GAL.	N	LOW
NB	29	Machonia diversiflora MACHO FERN	24" HT. X 18" SPR. / 24" O.C. 3 GAL. FULL	Y	MEDIUM
PO	104	Peperomia obtusifolia BABY RUBBER PLANT	12" HT. X 15" SPR. / 15" O.C. 1 GAL. FULL	N	LOW
LV1	145	Liriodendron "Evergreen Giant" EVERGREEN GIANT LIRIOPE	12" HT. X 12" SPR. / 15" O.C. 1 GAL.	N	MEDIUM
JP	45	Judicium chinensis "Blue Rug" JUNIPER GROUND COVER	18" HT. X 18" SPR. / 18" O.C. 3 GAL.	Y	LOW
CH	3	Chamaecyparis humilis EUROPEAN FAN PALM	3" O.A. HT. 7 GAL. FULL	Y	LOW
PB1	15	Philodendron "Burla Man" BURLA MARX PHILLODENDRON	24" HT. X 24" SPR. / 36" O.C. 3 GAL.	N	MEDIUM
MS	78	Microsorium scolopendrium WART FERN	12" HT. X 12" SPR. / 15" O.C. 1 GAL.	N	LOW
HL	48	*Hymenocallis latifolia SPIDER LILY	15" HT. X 12" SPR. / 18" O.C. 3 GAL. FULL	Y	LOW
LAWN	423 SF	Stenotaphrum secundatum "Florant" ST. AUGUSTINE GRASS	SOLID EVEN SOD		LOW

LANDSCAPE LEGEND

ZONE DISTRICT: RS-4 - CAT 1: Single Family Home and Townhome
 LOT AREA: 9,720 sf OPEN SPACE: 4,860 sf

	REQ.	PROV.
A) Minimum Number Of Required Trees Per Lot, 2 Front Lot - 3 Back Yard	5	5
B) Minimum Number Of Required Street Trees, Maximum average spacing of 20 feet on center	4	4
C) Additional Lot Trees Sec. 126-6 (4) (1 Additional Tree For Each 1,000 sf Above 6,000 sf)	4	4
D) Number of Existing Trees Existing trees required by law to be preserved on site and that meet the requirements of minimum tree size may be counted toward fulfilling the minimum tree requirements	3	3
TOTAL NUMBER OF TREES	10	10
E) Shrubs Required The Minimum Number Shall Be 12 Shrubs Per The Number Of Required Lot And Street Trees	120	172
F) Large Shrubs Required Large shrubs shall be 10% of the required number of shrubs for the specific project	12	73
G) Maximum permitted lawn grass/sod areas = 50%	2,430 sf	620 sf

- Palms shall not count towards the minimum number of required trees
 - No less than 30% of the required trees shall be native species
 - No less than 50% of the required trees shall be low maintenance or drought and salt tolerant species

SYMBOL LEGEND

- # TREE TO REMAIN
- # TREE TO REMOVE
- TREE CANOPY - DIA.

1. PROPOSED LANDSCAPE PLAN
SCALE 1/16" = 1'-0"

GAIAS DESIGN
 GAIAS DESIGN INC.
 786.777.8716 gaia@gaiasdesign.com
 OWNER
 Jorge M Campodonico
 703.963.4438 jc@citylendinginc.com

LANDSCAPE ARCHITECT
Diego Vanderbiest
 6200 SW 80 ST
 MIAMI, FLORIDA 33143
 (305) 528-4001
 SEAL

Diego Vanderbiest
 Digitally signed by Diego Vanderbiest
 Date: 2020.08.09 14:15:25 -0400

Diego J. VANDERBIEST
 RLA #6667355

RC
 RC TEK ARCHITECTURE LLC
 1395 BRICKELL AVE SUITE 900
 MIAMI FL 33131 PH: 305.967.6355

RC
 SEAL

JOHN SACCO AR0004952

New Single Family Home
 4354 N MICHIGAN AVE
 MIAMI BEACH, FL 33140

FINAL SUBMITTAL
 DATE: 08/10/2020

THESE PLANS ARE FOR DRB REVIEW ONLY. THEY ARE NOT TO BE CONSTRUED AS CONSTRUCTION DOCUMENTS UNTIL ALL BUILDING DEPARTMENTS APPROVAL ARE OBTAINED

PROPOSED
 LANDSCAPE PLAN

DRB L.2



Conocarpus erectus 'Sericeus'
Silver Buttonwood



Coccoloba diversifolia
Pigeon Plum



Phoenix canariensis
Canary Island Date Palm



Ligustrum japonicum
Japanese Privet



Bursera simaruba
Gumbo Limbo



Cyrtostachys renda
Lipstick Palm



Pittosporum tobira
Japanese Cheesewood



Sabal minor
Dwarf Blue-stem Palmetto



Clusia guttifera
Small Leaf Clusia



Nephrolepis biserrata 'Macho'
Macho Fern



Juniperus chinensis 'Blue Rug'
Chinese Juniper



Hymenocallis latifolia
Spider Lily



Liriope muscari
Lyliturf



Ficus microcarpa 'Green Island'
Ficus 'Green Island'



Philodendron 'Burlie Marx'
Burlie Marx Philodendron

GAIA/S
DESIGN

GAIA/S DESIGN INC.
786.777.8716 gaia@gaiasdesign.com

OWNER
Jorge M Campodonico
703.963.4438 jc@citylendinginc.com

LANDSCAPE ARCHITECT

Diego Vanderbiest
6200 SW 80 ST
MIAMI, FLORIDA 33143
(305) 528-4001
SEAL

Diego Vanderbiest Digitally signed
by Diego Vanderbiest
Date: 2020.08.09 14:15:03 -04'00'

DIEGO J. VANDERBIEST
RLA #6667355

RC TEK ARCHITECTURE LLC
1395 BRICKELL AVE SUITE 900
MIAMI FL 33131 PH: 305.967.6355



SEAL

JOHN SACCO AR0004952

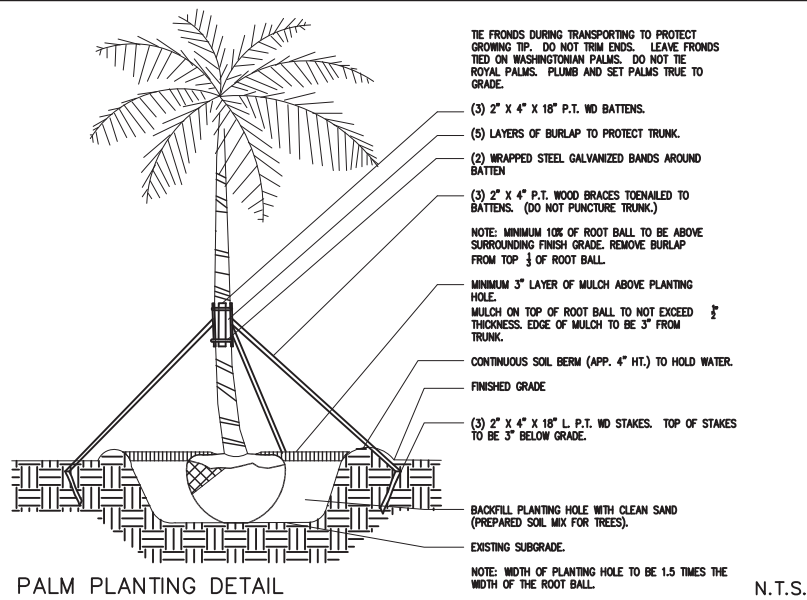
New Single Family Home
4354 N MICHIGAN AVE
MIAMI BEACH, FL 33140

FINAL SUBMITTAL
DATE: 08/10/2020

THESE PLANS ARE FOR DRB REVIEW ONLY. THEY
ARE NOT TO BE CONSTRUED AS CONSTRUCTION
DOCUMENTS UNTIL ALL BUILDING DEPARTMENTS
APPROVAL ARE OBTAINED

PLANT BOARD

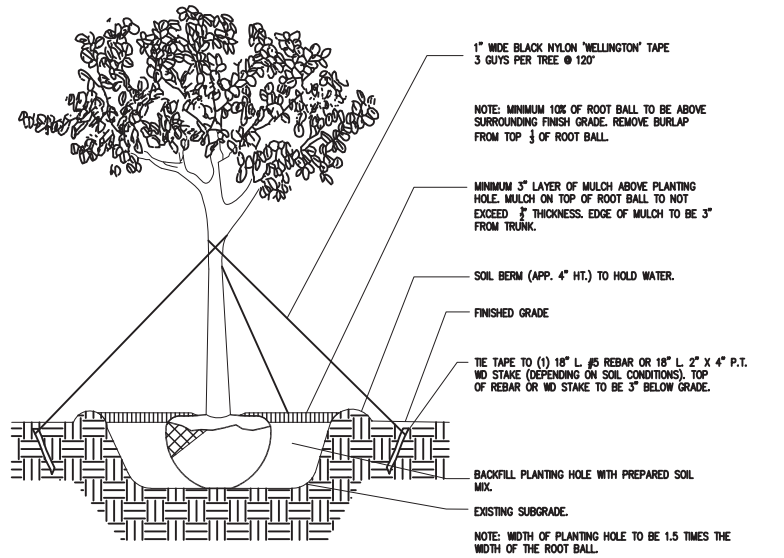
DRB L.3



PALM PLANTING DETAIL

LARGE TREE PLANTING DETAIL SIMILAR

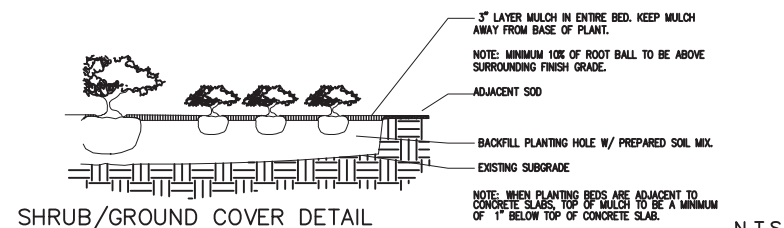
N.T.S.



TREE PLANTING DETAIL

TREES WITH 3\"/>

N.T.S.



SHRUB/GROUND COVER DETAIL

N.T.S.

PLANT NOTES

1. ALL PLANT MATERIAL TO BE FLORIDA NO. 1 OR BETTER FLORIDA DEPARTMENT OF AGRICULTURE GRADES AND STANDARDS; PARTS I AND II, 2ND EDITION: FEBRUARY 1998, RESPECTIVELY.
2. ALL PLANTING BEDS TO BE TOPPED WITH 3\"/>

ROOT PRUNING SPECIFICATIONS

ALL TREES AND PALMS TO BE RELOCATED MUST BE WATERED DAILY FOR AT LEAST 2-3 DAYS PRIOR TO ANY ROOTS BEING CUT TO ENSURE THAT THEY ARE FULLY HYDRATED. EACH WATERING MUST THOROUGHLY SATURATE THE ROOTBALL TO ITS FULL DEPTH.

EACH TREE AND PALM MUST THEN BE WATERED EVERY OTHER DAY, NOT RELYING ON RAIN. DURING THE ENTIRE ROOT PRUNING PROCESS EITHER BY A TEMPORARY IRRIGATION SYSTEM OR BY HAND. EACH WATERING MUST THOROUGHLY SATURATE THE ROOTBALL TO ITS FULL DEPTH.

TREE AND PALM RELOCATION ACTIVITIES MUST BE SCHEDULED SO THAT REMOVAL AND REPLANTING TAKE PLACE IN THE SAME 24 HOUR PERIOD.

ALL DIGGING IN THE ROOT ZONE DURING THE ROOT PRUNE PROCESS MUST BE DONE BY HAND. PRUNING OF ROOTS MUST BE DONE BY HAND WITH CLEAN, SHARP TOOLS. MACHINERY COULD BE USED ON LARGER TREES AS LONG AS ROOTS ARE FINALIZED BY HAND PRUNING. DO NOT PAINT ROOTS WITH PAINT OR ANY KIND OF SEALANT.

MYCORRHIZA (ROOTS TRANSPLANT OR EQUIVALENT) MUST BE INCORPORATED INTO THE BACKFILL SOIL PRIOR TO BACKFILLING AS PER MANUFACTURERS RECOMMENDATIONS.

AFTER EACH ROOT PRUNE, EACH SECTION OF ROOTBALL THAT IS PRUNED MUST BE WRAPPED WITH A BLACK PLASTIC AND THE TRENCH BACKFILLED WITH ORIGINAL EXCAVATED SOIL. A TREE RING WITH A MINIMUM HEIGHT OF 6\"/>

ONCE THE TREE RING IS CONSTRUCTED AFTER EACH ROOT PRUNE, A HIGH-PHOSPHORUS ROOT STIMULANT MUST BE LIBERALLY APPLIED TO THE SURFACE OF THE ROOTBALL AND THOROUGHLY WATERED IN TO ENCOURAGE NEW ROOT GROWTH.

PRIOR TO ANY ROOTS BEING CUT, ALL MAJOR ROOTS MUST BE IDENTIFIED TO DETERMINE THE ROOTBALL DIAMETER BASED ON THE RELATIVE LOCATION AND SIZE OF THE ROOTS.

MINIMUM ROOTBALL DIAMETER CALCULATION BASED ON A FACTOR OF 10 OR ALLOWING A MINIMUM OF 9\"/>

MINIMUM ROOTBALL DEPTH MUST BE 24\"/>

AS A GENERAL RULE, MINIMUM ROOT PRUNE TIME FOR TREES WITH A DBH OF LESS THAN 10\"/>

AS A GENERAL RULE, MINIMUM ROOT PRUNE TIME FOR TREES WITH A DBH OF 10\"/>

MAINTENANCE SPECIFICATIONS

ALL NEW AND RELOCATED TREES AND PALMS MUST BE MAINTAINED FOR ONE YEAR FROM THE DATE OF RELOCATION TO THEIR FINAL LOCATIONS.

WHENEVER POSSIBLE, EACH TREE AND PALM MUST BE WATERED BY A PERMANENT AUTOMATIC IRRIGATION SYSTEM FOLLOWING RELOCATION. EACH WATERING MUST THOROUGHLY SATURATE THE ROOTBALL TO ITS FULL DEPTH; THIS WILL REQUIRE 25-50 GALLONS OF WATER FOR SMALL TREES AND PALMS, DEPENDING ON ROOTBALL SIZE, WHILE LARGE TREES WILL REQUIRE A MINIMUM OF 10 GALLONS PER FOOT OF ROOTBALL DIAMETER. WATERING FREQUENCY MUST BE EVERYDAY FOR THE FIRST TWO WEEKS, EVERY OTHER DAY FOR THE NEXT TREE WEEKS, AND EVERY THIRD DAY FOR THE NEXT 6-8 WEEKS.

WHEN AN AUTOMATIC IRRIGATION SYSTEM IS NOT POSSIBLE, CONTRACTOR IS RESPONSIBLE FOR HAND WATERING RELOCATED TREES AND PALMS THROUGHOUT THE MAINTENANCE PERIOD AND UNTIL FINAL ACCEPTANCE BY THE LANDSCAPE ARCHITECT AND/OR CLIENT.

IMMEDIATELY AFTER RELOCATION TO THE FINAL LOCATION, A HIGH-PHOSPHORUS ROOT STIMULANT MUST BE APPLIED TO THE SURFACE OF THE ROOTBALL AT THE RECOMMENDED LABEL RATE AND WATERED IN WITH A DRENCH CONSISTING OF A SYSTEMIC INSECTICIDE AND A CONTACT ROOT ROT FUNGICIDE, FOLLOWING LABEL INSTRUCTIONS, AS INITIAL PREVENTATIVE MAINTENANCE.

EVERY THREE MONTHS THEREAFTER, A HIGH-PHOSPHORUS ROOT STIMULANT MUST BE APPLIED TO THE SURFACE OF THE ROOTBALL AT THE RECOMMENDED LABEL RATE AND WATERED IN WITH A DRENCH CONSISTING OF A SYSTEMIC INSECTICIDE AND A BROAD-SPECTRUM SYSTEMIC FUNGICIDE, FOLLOWING LABEL INSTRUCTIONS, AS CONTINUING PREVENTATIVE MAINTENANCE.

IRRIGATION AND BRACING MUST BE CHECKED AND EACH TREE OR PALM THOROUGHLY INSPECTED FOR SIGNES OF STRESS, DISEASE, OR PEST PROBLEMS ON A MONTHLY BASIS.

SHADE TREES

IMMEDIATELY AFTER RELOCATION TO THE FINAL LOCATION AND EVERY THREE MONTHS THEREAFTER, A HIGH-QUALITY, SLOW-RELEASE 15-2-15 GRANULAR FERTILIZER MUST BE APPLIED, AT THE RECOMMENDED LABEL RATE, SPREAD EVENLY ACROSS THE SURFACE OF THE ROOTBALL.

FOLIAR FEED FOUR TIMES PER YEAR.

FLOWERING TREES

IMMEDIATELY AFTER RELOCATION TO THE FINAL LOCATION AND EVERY THREE MONTHS THEREAFTER, A HIGH-QUALITY, SLOW RELEASE 8-14-15 GRANULAR FERTILIZER MUST BE APPLIED, AT THE RECOMMENDED LABEL RATE, SPREAD EVENLY ACROSS THE SURFACE OF THE ROOTBALL.

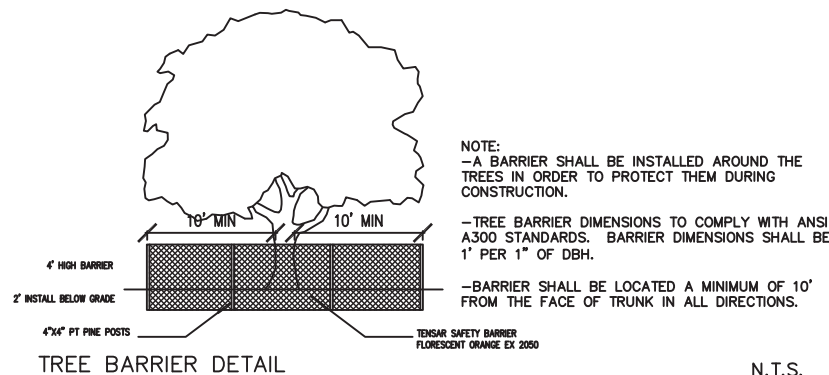
FOLIAR FEED FOUR TIMES PER YEAR.

PALMS

STRING MUST BE REMOVED FROM THE TIED UP LEAVES IMMEDIATELY AFTER RELOCATION TO THE FINAL LOCATION IF THE PALM WAS ROOT PRUNED OR WITHIN 30-45 DAYS AFTER RELOCATION ON THE OCCASION THE LANDSCAPE ARCHITECT APPROVED RELOCATION WITHOUT ROOT PRUNING DUE TO TIME CONSTRAINTS.

IMMEDIATELY AFTER RELOCATION TO THE FINAL LOCATION AND EVERY THREE MONTHS THEREAFTER, A HIGH-QUALITY, SLOW RELEASE 8-14-12 GRANULAR FERTILIZER MUST BE APPLIED, AT THE RECOMMENDED LABEL RATE, SPREAD EVENLY ACROSS THE SURFACE OF THE ROOTBALL.

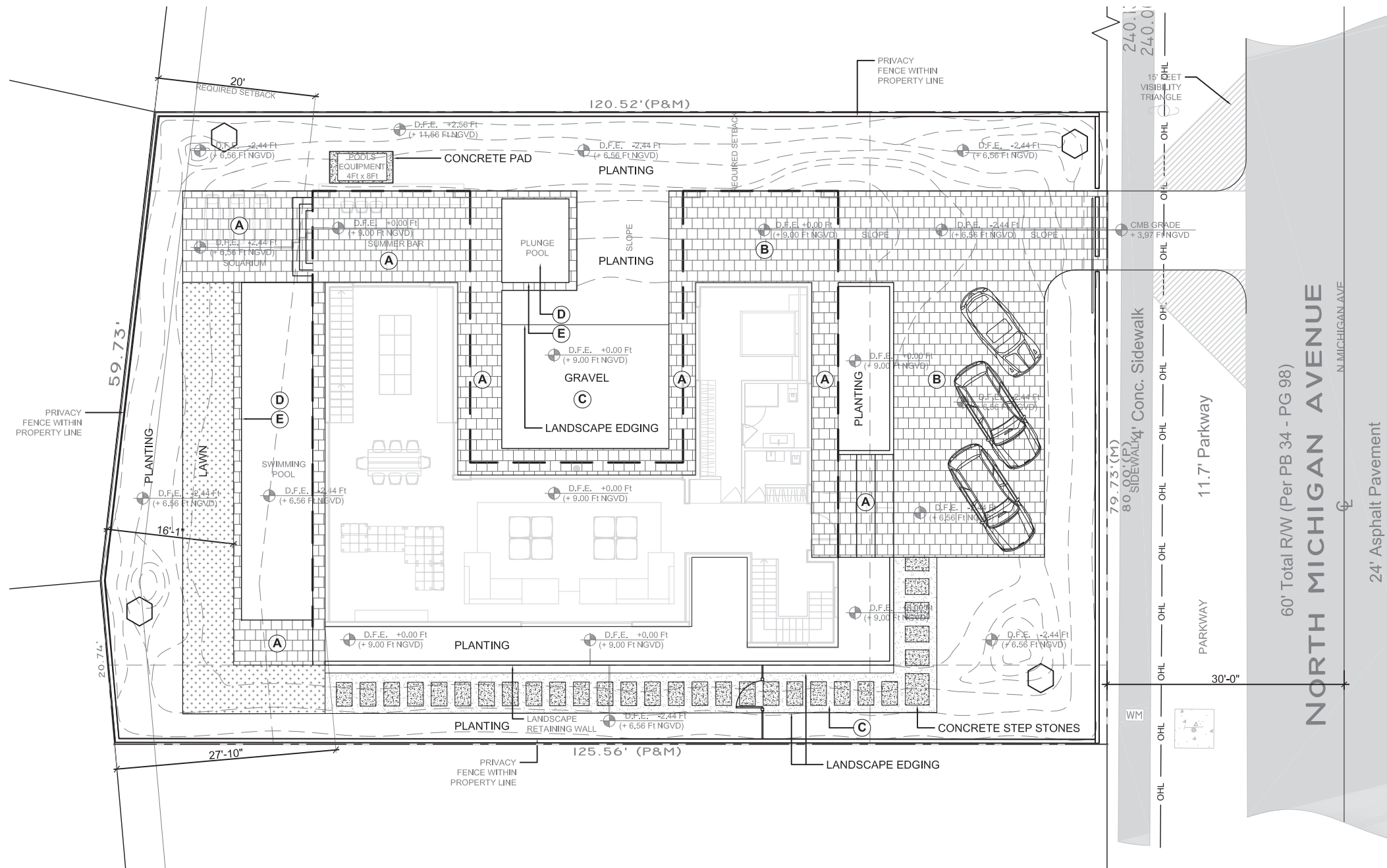
FOLIAR FEED SIX TIMES PER YEAR.



TREE BARRIER DETAIL

N.T.S.

1. PROPOSED HARDSCAPE PLAN
SCALE 1/16" = 1'-0"



MATERIALS SCHEDULE

A	<p>PEDESTRAIN PAVERS</p> <p>MANUFACTURER: BELGARD STYLE: OCEANSIDE COLOR: WHITE SIZE: 12" X 12" X 1-3/16" PATTERN: RUNNING BOND (SEE PLAN)</p>	
B	<p>DRIVEWAY PAVERS</p> <p>MANUFACTURER: BELGARD STYLE: OCEANSIDE COLOR: WHITE SIZE: 12" X 12" X 2-3/8" PATTERN: RUNNING BOND (SEE PLAN)</p>	
C	<p>AGGREGATE / GRAVEL</p> <p>MANUFACTURER: YARDCO STYLE: VIETNAMESE PEBBLE "YELLOW" COLOR: WHITE / YELLOW SIZE: 3/8" PATTERN: N/A</p>	
D	<p>POOL FINISH</p> <p>MANUFACTURER: PEBBLETEC STYLE: PEBBLESHEEN COLOR: BLACK ONYX SIZE: N/A NOTE: INSTALL PER MANUFACTURE'S INSTRUCTIONS</p>	
E	<p>WATER LINE TILE</p> <p>MANUFACTURER: DAL TILE STYLE: POOL TILE COLOR: SUEDE GRAY D182 SIZE: 2" X 1" FINISH: MATTE NOTE: INSTALL PER MANUFACTURE'S INSTRUCTIONS</p>	<p>PATTERN</p>

GAIAS DESIGN

GAIAS DESIGN INC.
786.777.8716 gaia@gaiasdesign.com

OWNER
Jorge M Campodónico
703.963.4438 jc@citylendinginc.com

LANDSCAPE ARCHITECT

Diego Vanderbiest
6200 SW 80 ST
MIAMI, FLORIDA 33143
(305) 528-4001
SEAL

Digitally signed by Diego Vanderbiest
Date: 2020.08.09 14:13:33 -0400'

Diego J. VANDERBIEST
RLA #6667355

RC TEK ARCHITECTURE LLC
1395 BRICKELL AVE SUITE 900
MIAMI FL 33131 PH: 305.967.6355

RC

SEAL

JOHN SACCO AR0004952

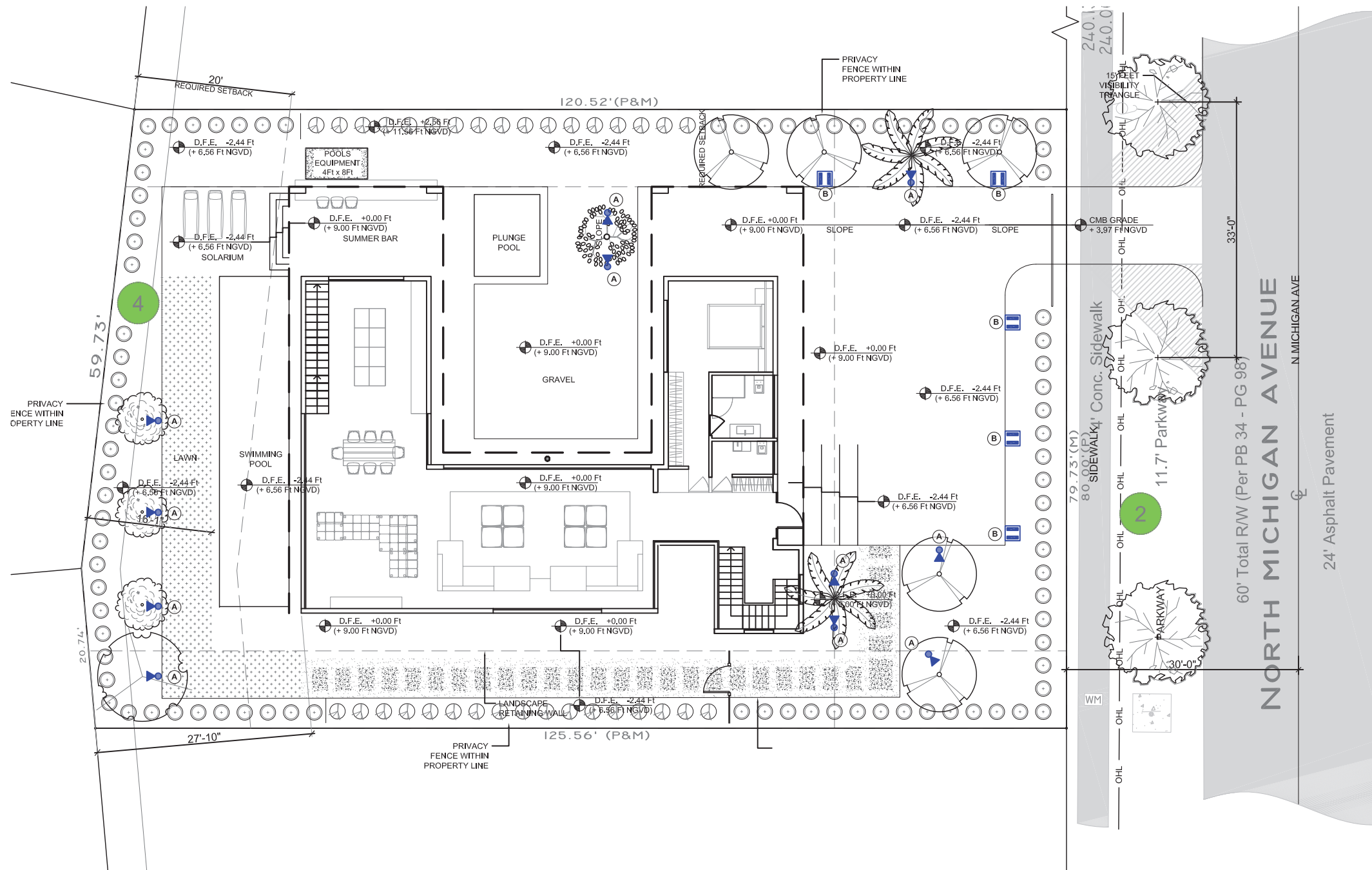
New Single Family Home
4354 N MICHIGAN AVE
MIAMI BEACH, FL 33140

FINAL SUBMITTAL
DATE: 08/10/2020

THESE PLANS ARE FOR DRB REVIEW ONLY. THEY ARE NOT TO BE CONSTRUED AS CONSTRUCTION DOCUMENTS UNTIL ALL BUILDING DEPARTMENTS APPROVAL ARE OBTAINED

PROPOSED
HARDSCAPE PLAN

DRB L.5



A



B

LANDSCAPE LIGHTING FIXTURE SCHEDULE

TYPE	SYMBOL	MANUFACTURER	DESCRIPTION	QTY
A		HK USA Lighting Group	ZXL16i-A-CGSA-120V-6W-LED-3K-BK	11
B		BEGA	84671- 12.3W LED	5

1. PROPOSED LIGHTING PLAN
SCALE 1/16" = 1'-0"



GAIAS DESIGN
GAIAS DESIGN INC.
786.777.8716 gaia@gaiasdesign.com

OWNER
Jorge M Campodonico
703.963.4438 jc@citylendinginc.com

LANDSCAPE ARCHITECT
Diego Vanderbiest
6200 SW 80 ST
MIAMI, FLORIDA 33143
(305) 528-4001
SEAL

Digitally signed by Diego Vanderbiest
Date: 2020.08.09 14:12:39 -0400'

DIEGO J. VANDERBIEST
RLA #6667355

RC
SEAL

RC TEK ARCHITECTURE LLC
1395 BRICKELL AVE SUITE 900
MIAMI FL 33131 PH: 305.967.6355

JOHN SACCO AR0004952

New Single Family Home
4354 N MICHIGAN AVE
MIAMI BEACH, FL 33140

FINAL SUBMITTAL
DATE: 08/10/2020

THESE PLANS ARE FOR DRB REVIEW ONLY. THEY ARE NOT TO BE CONSTRUED AS CONSTRUCTION DOCUMENTS UNTIL ALL BUILDING DEPARTMENTS APPROVAL ARE OBTAINED

LANDSCAPE
LIGHTING PLAN

DRB L.6