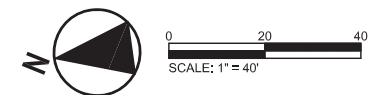
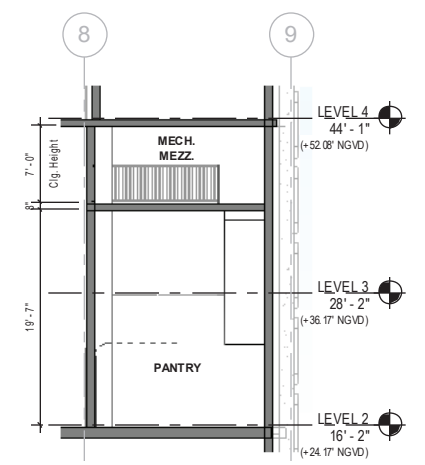
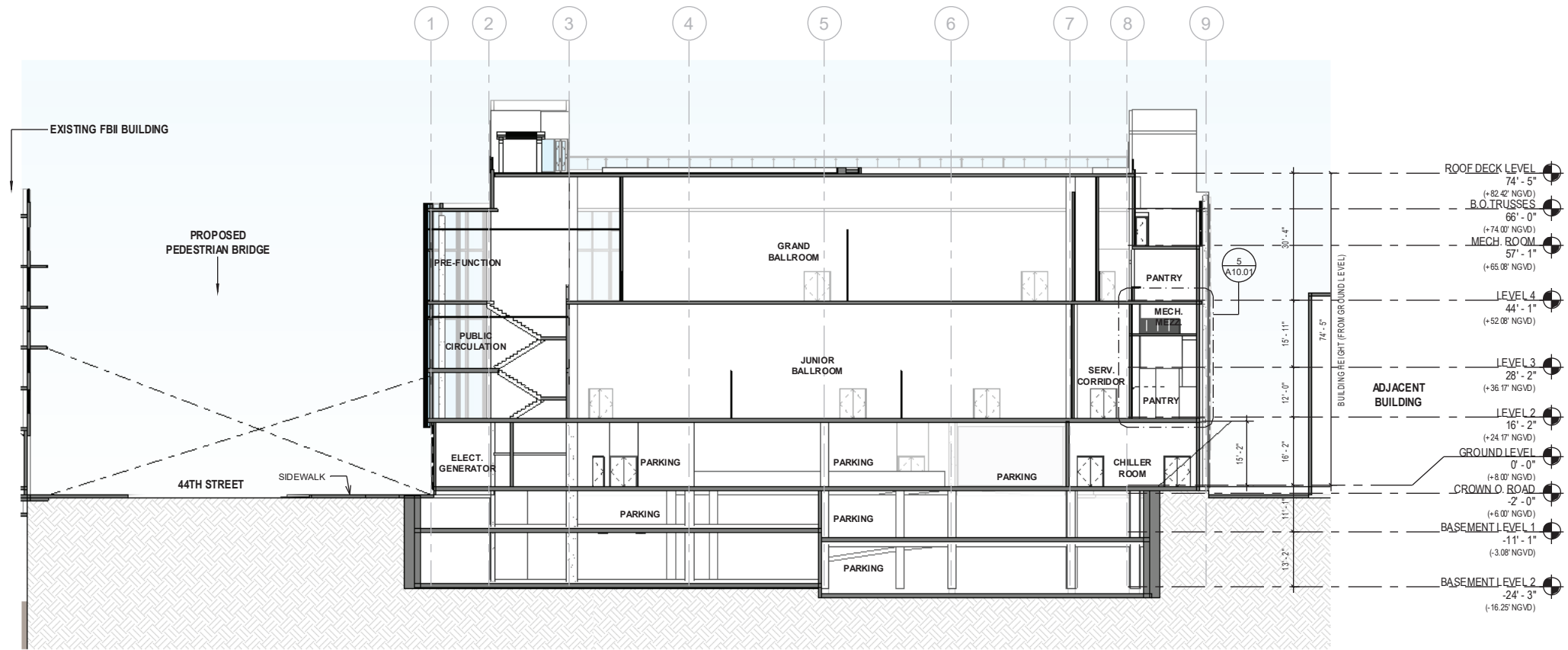


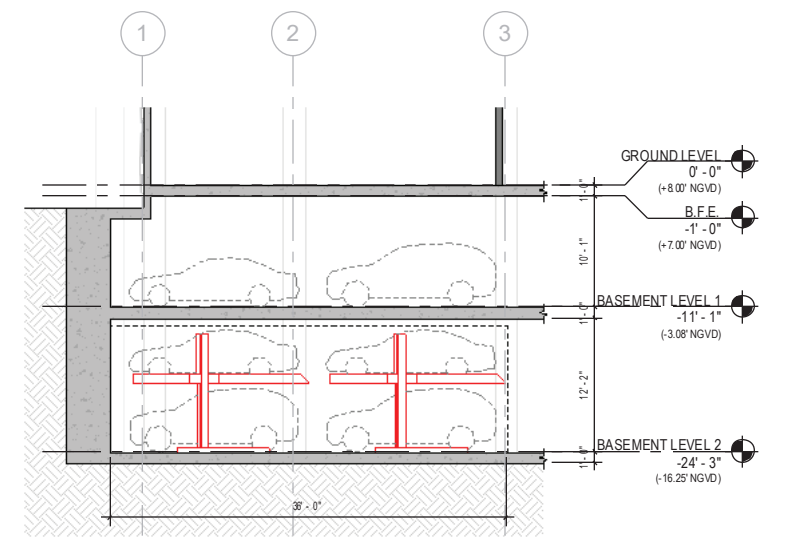
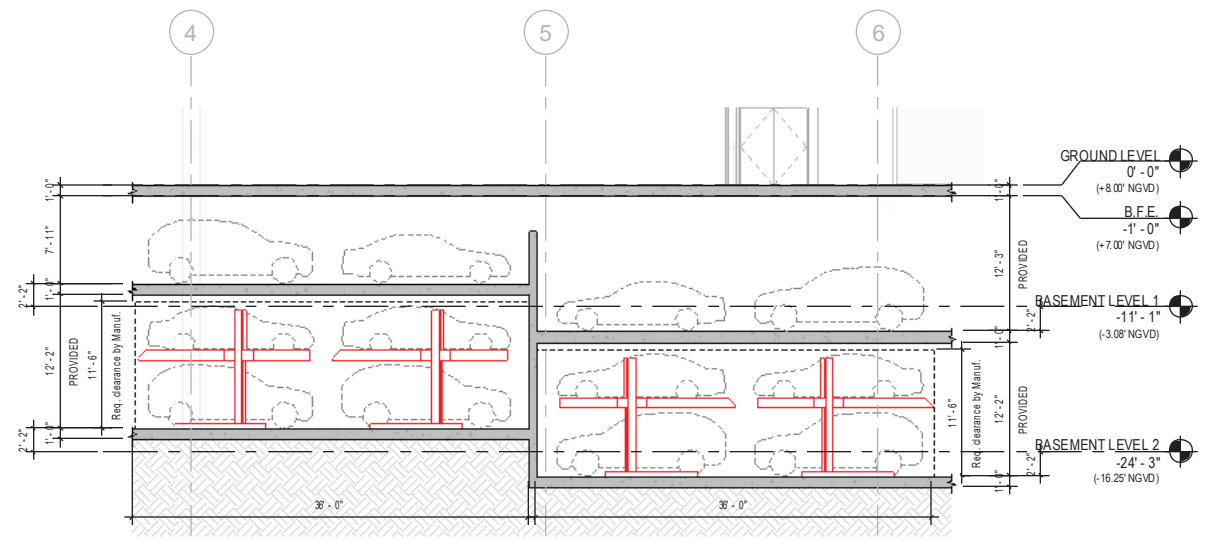
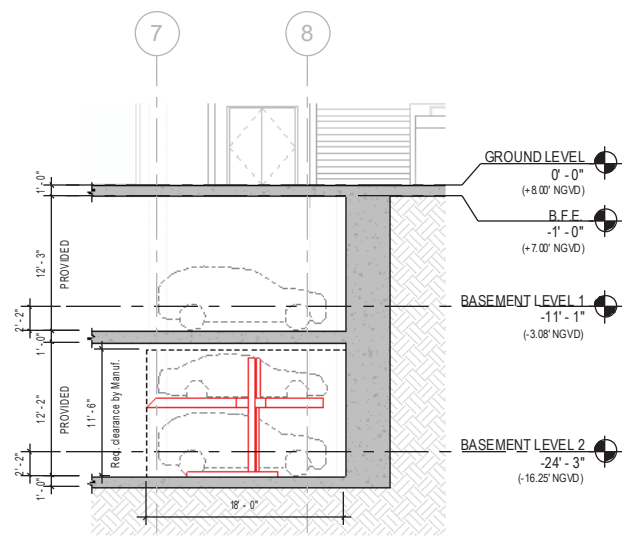
1 DRAINAGE AND GRADING PLAN
 A5.01 1" = 40'





1 BUILDING SECTION 1
A10.01 1/16" = 1'-0"

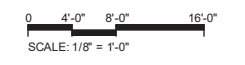
5 ENLARGED MEZZANINE SECTION
A10.01 1/8" = 1'-0"

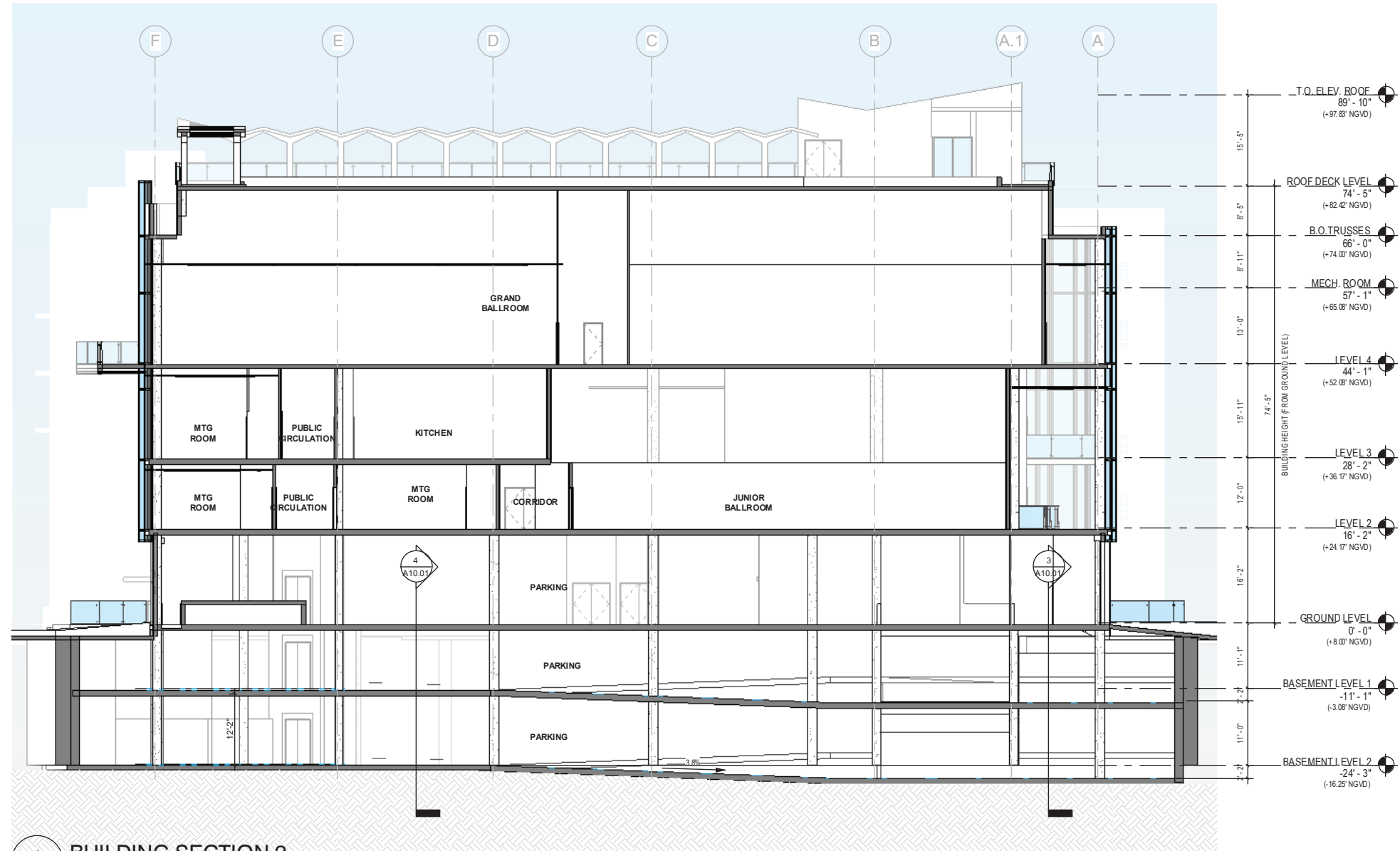


2 DETAIL SECTION 1
A10.01 1/8" = 1'-0"

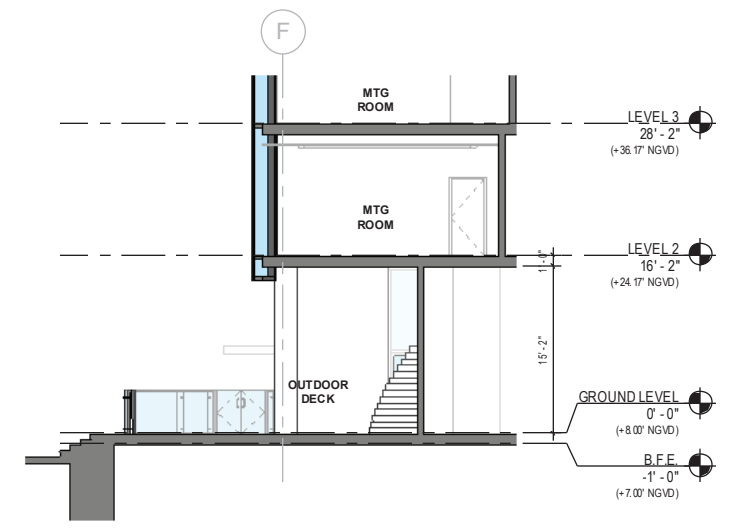
3 DETAIL SECTION 2
A10.01 1/8" = 1'-0"

4 DETAIL SECTION 3
A10.01 1/8" = 1'-0"

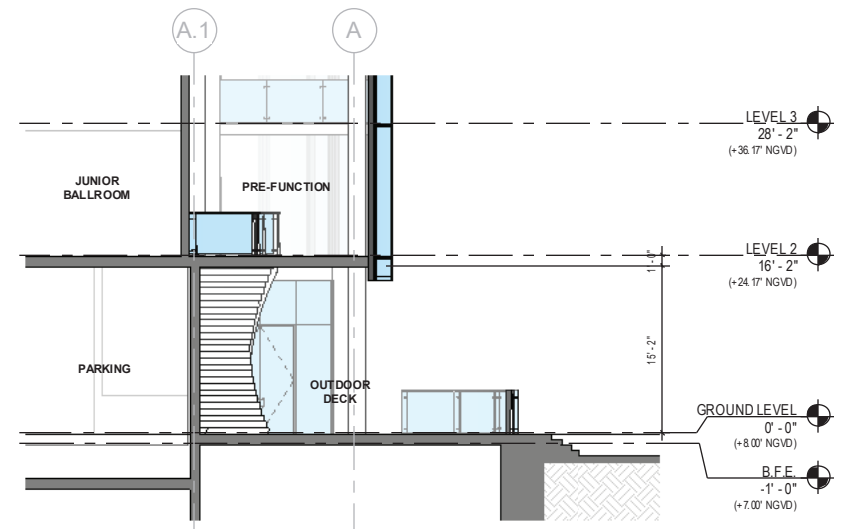




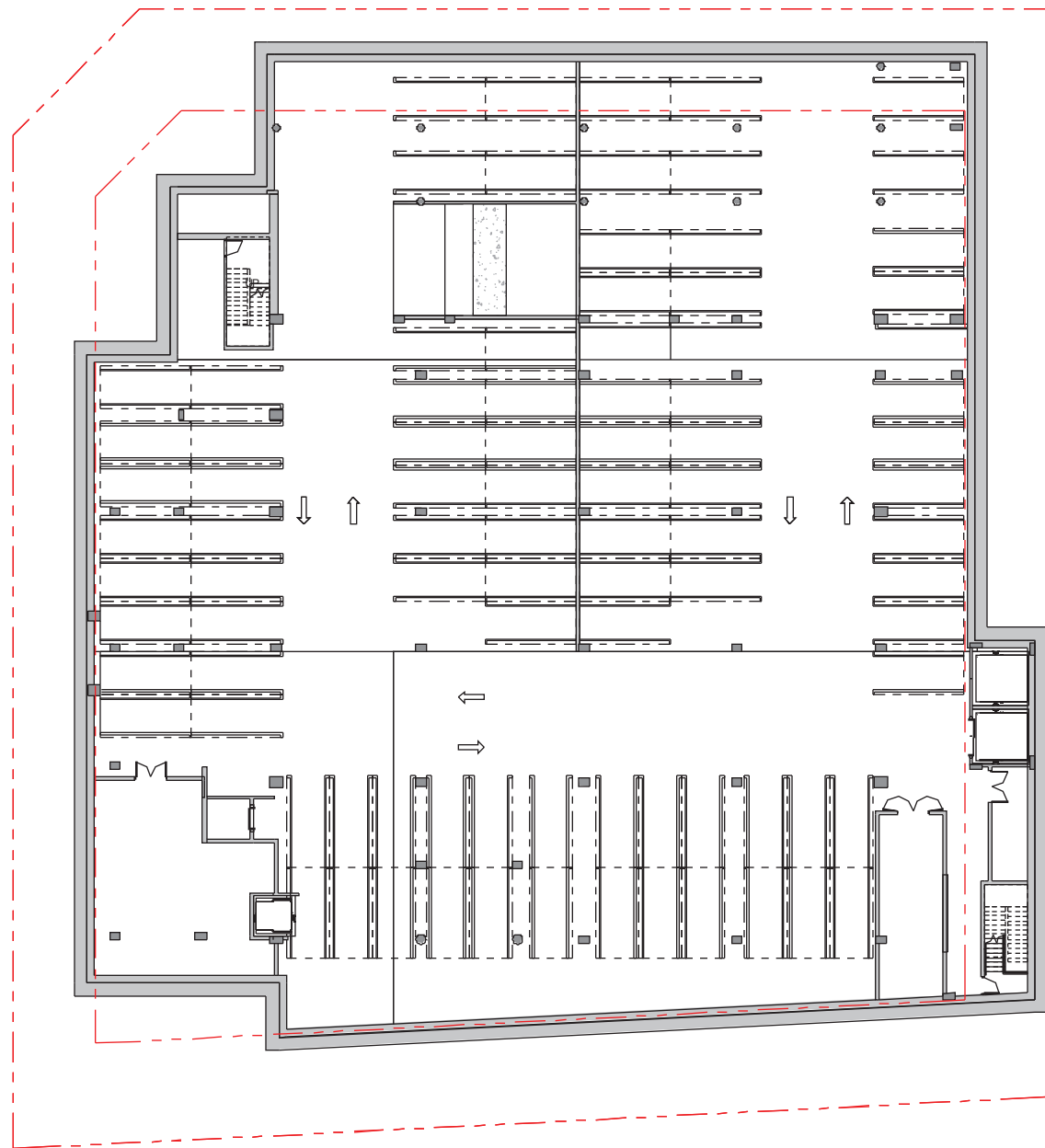
1 BUILDING SECTION 2
A10.02 3/32" = 1'-0"



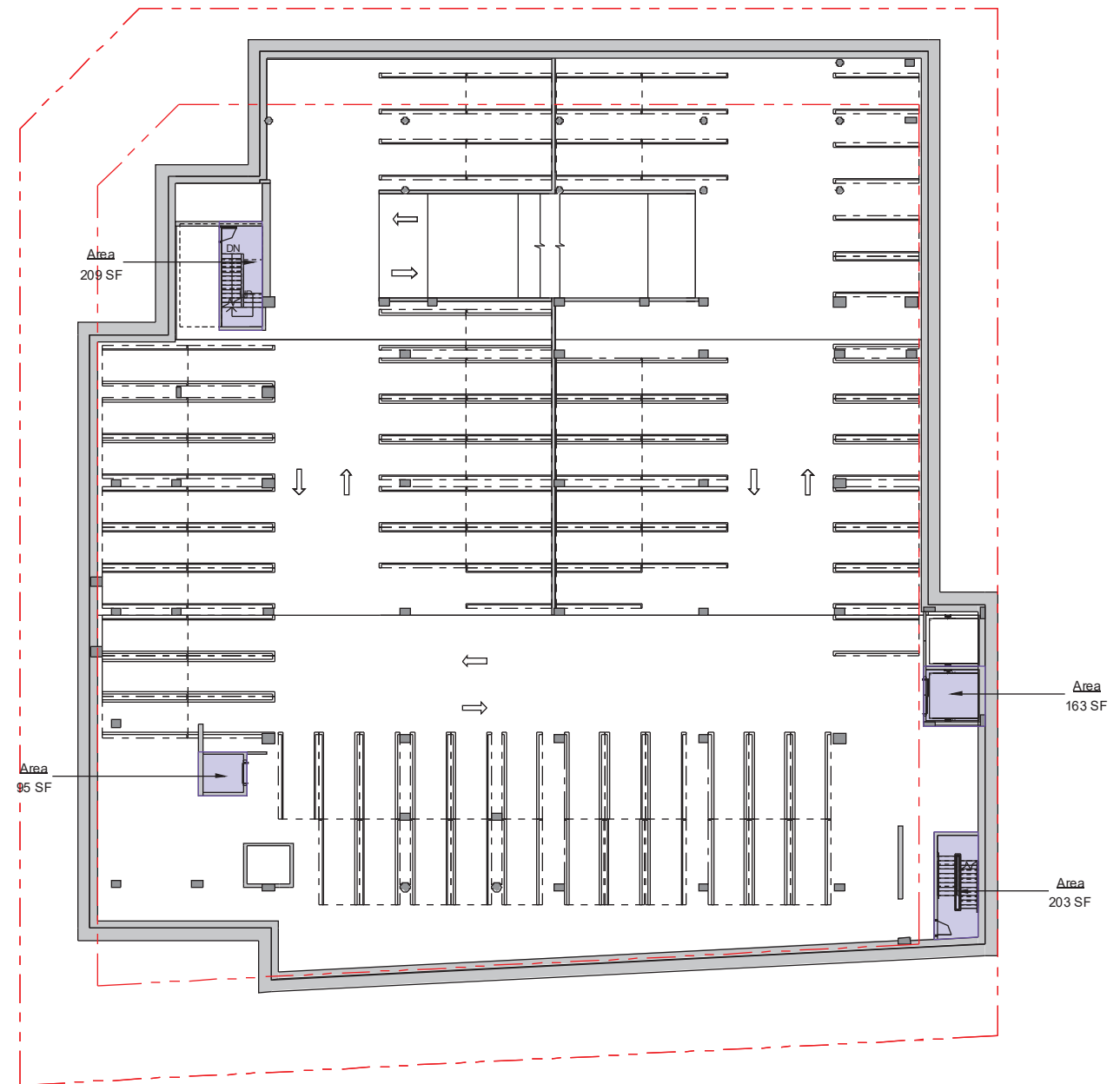
3 ENLARGED SECTION 1
A10.02 1/8" = 1'-0"



2 ENLARGED SECTION 2
A10.02 1/8" = 1'-0"



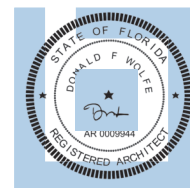
7 BASEMENT LEVEL 2
FAR1.00 1/16" = 1'-0"

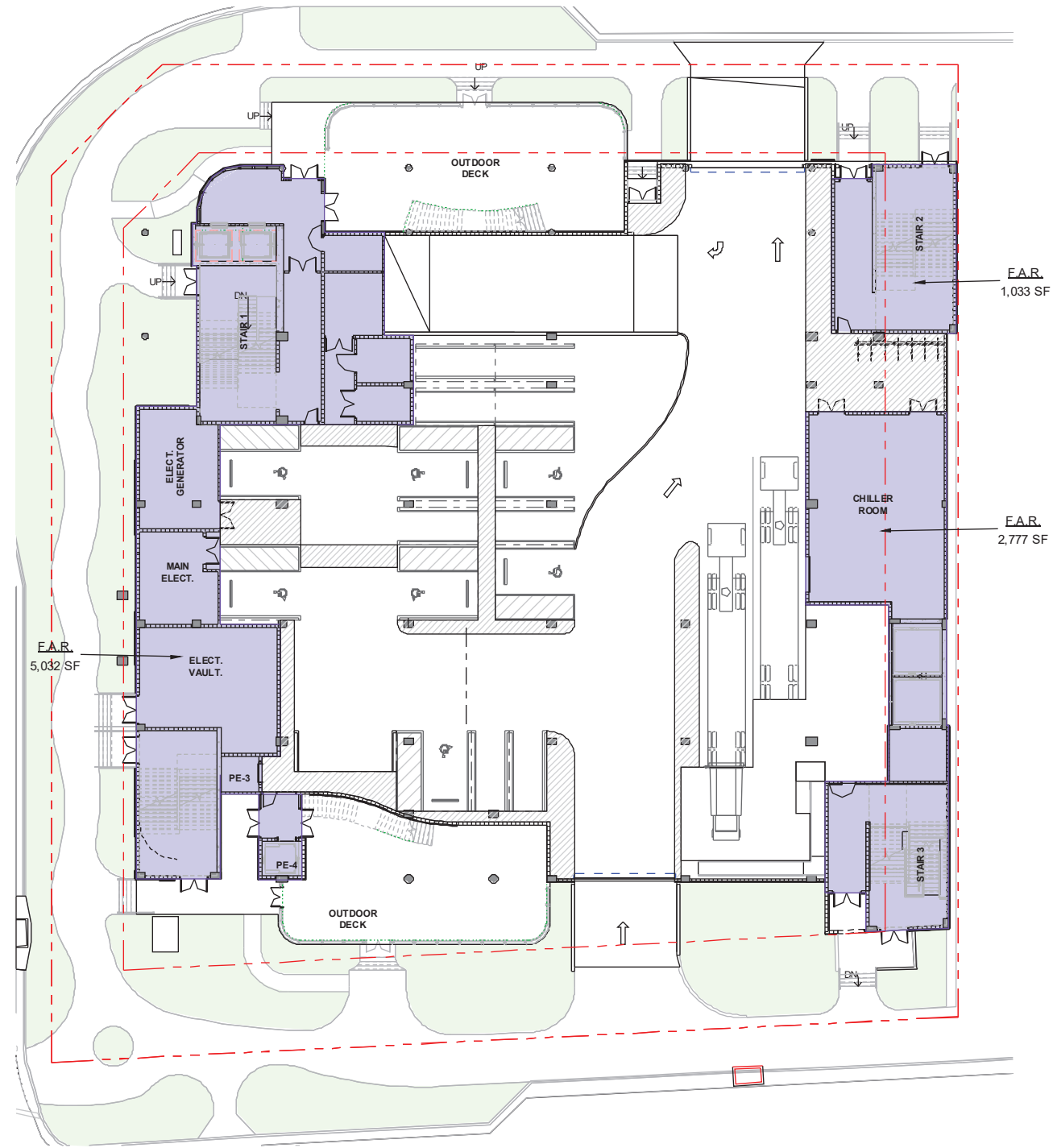


1 BASEMENT LEVEL 1
FAR1.00 1/16" = 1'-0"

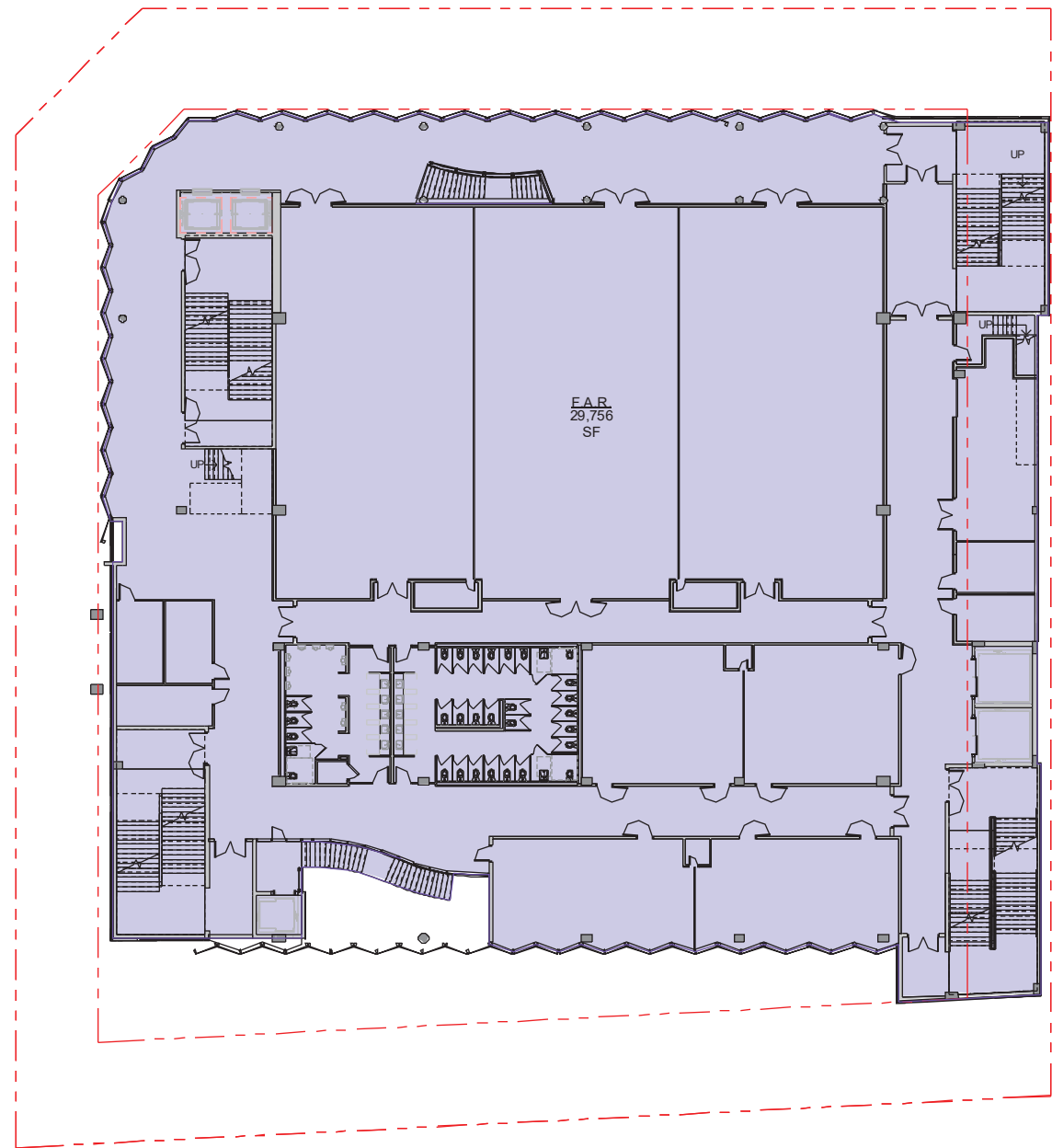
FLOOR AREA RATIO	
BASEMENT LEVEL 1	670 SF
GROUND LEVEL	8,841 SF
LEVEL 2	29,756 SF
LEVEL 3	17,270 SF
LEVEL 4	30,321 SF
ROOF DECK LEVEL	1,792 SF
Grand total	88,651 SF

0 8'-0" 16'-0" 32'-0"
SCALE: 1/16" = 1'-0"



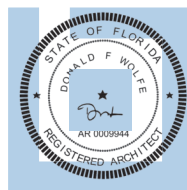


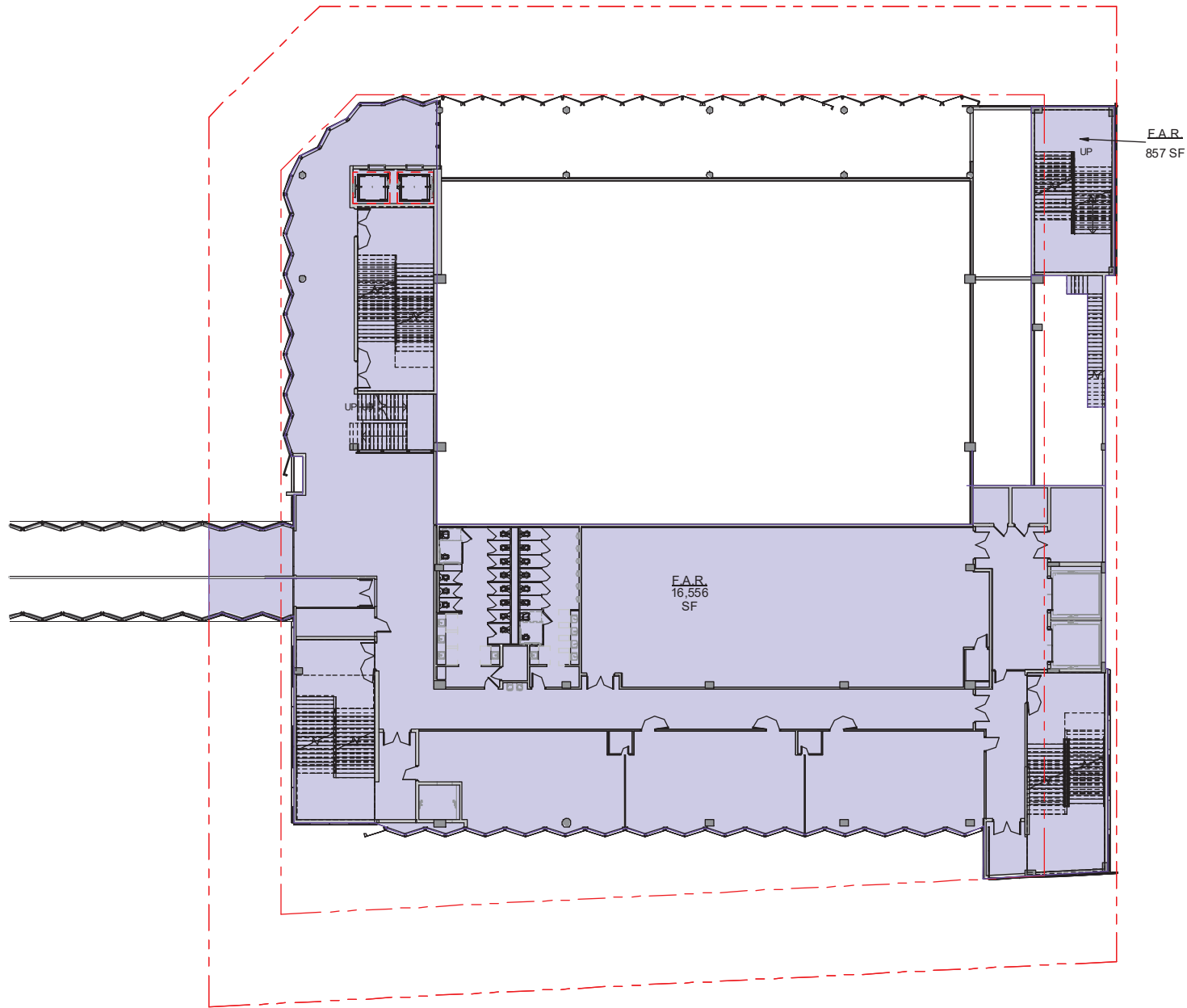
1 GROUND LEVEL
 FAR2.00 1/16" = 1'-0"



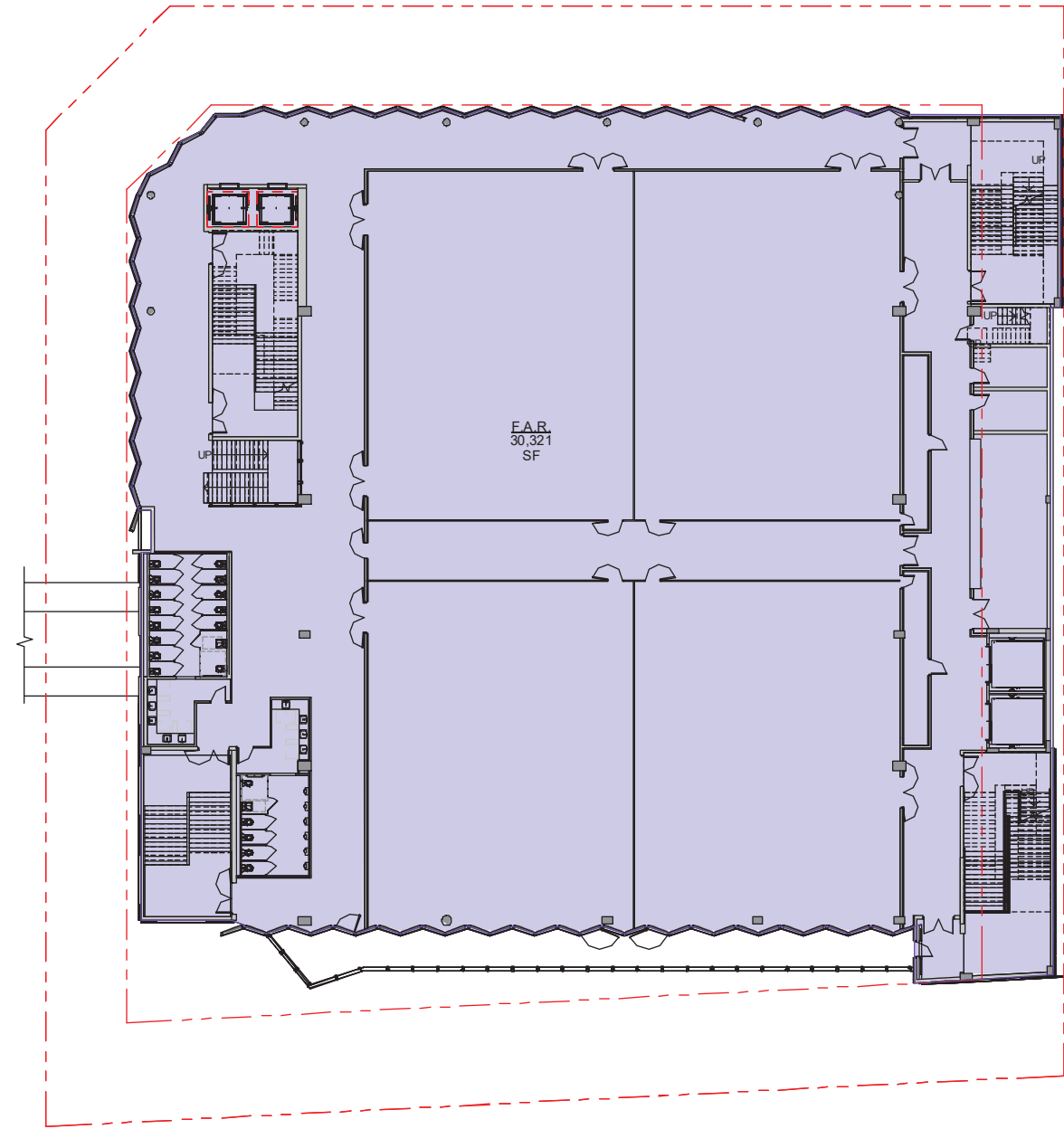
2 LEVEL 2
 FAR2.00 1/16" = 1'-0"

0 8'-0" 16'-0" 32'-0"
 SCALE: 1/16" = 1'-0"



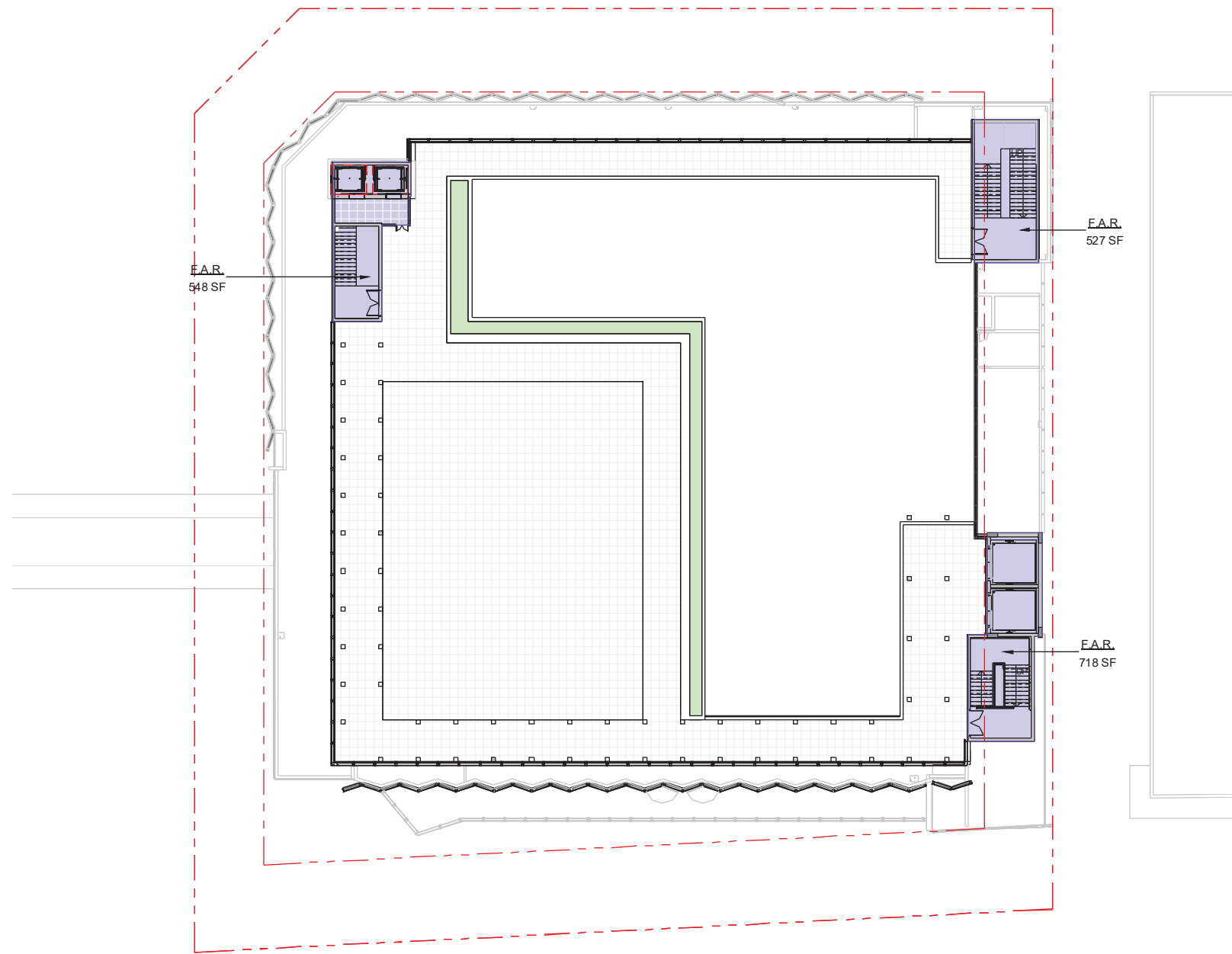


1 LEVEL 3
FAR3.00 1/16" = 1'-0"



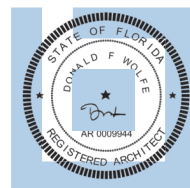
2 LEVEL 4
FAR3.00 1/16" = 1'-0"

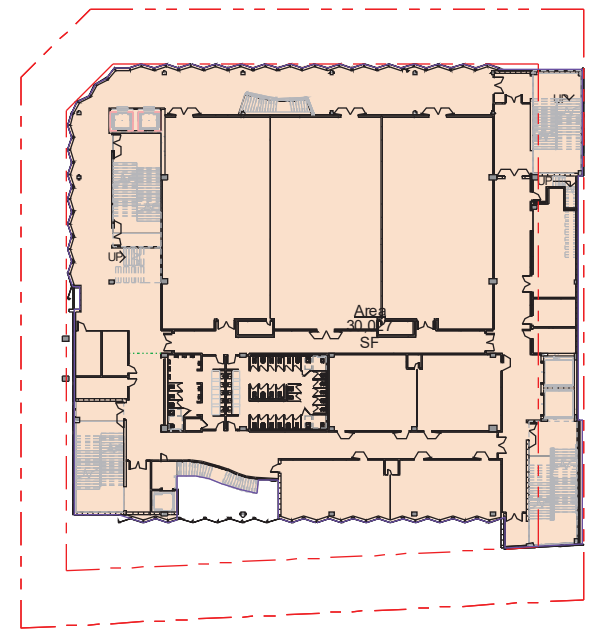
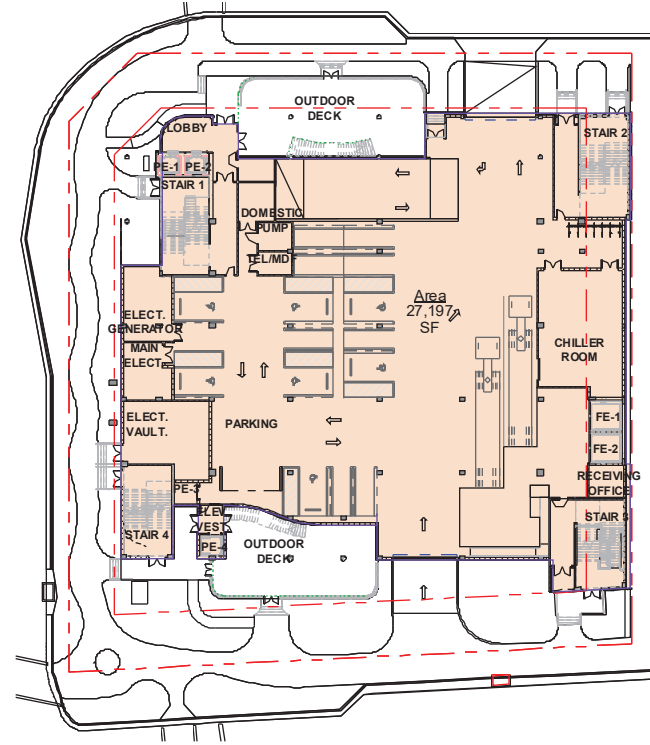
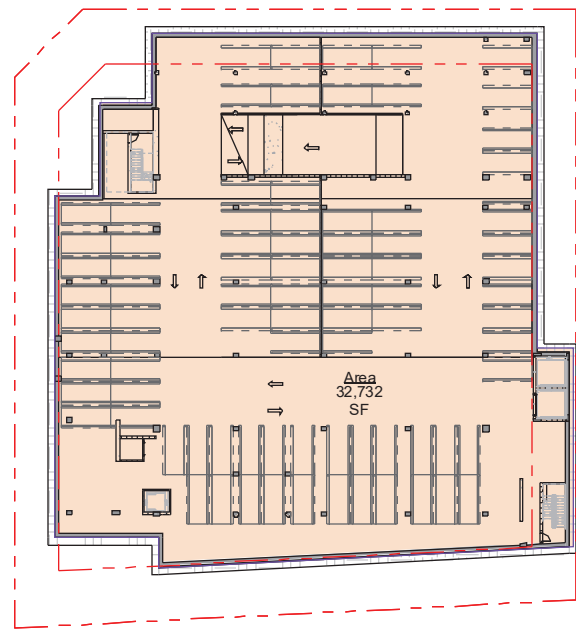
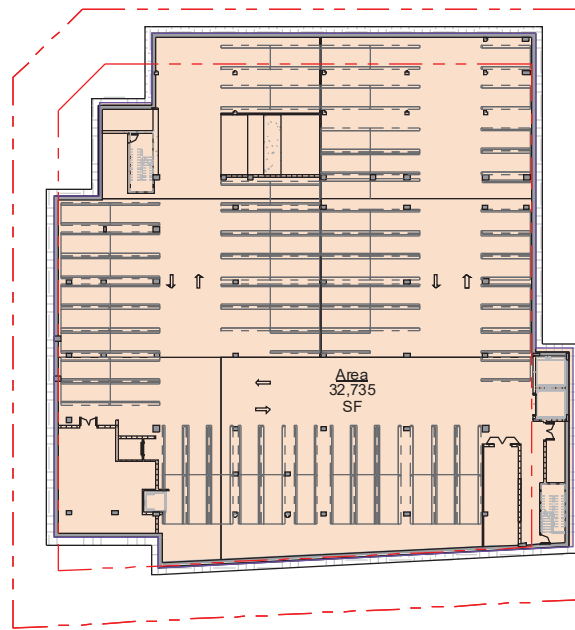
0 8'-0" 16'-0" 32'-0"
SCALE: 1/16" = 1'-0"



1 ROOF DECK LEVEL
 FAR4.00 1/16" = 1'-0"

0 8'-0" 16'-0" 32'-0"
 SCALE: 1/16" = 1'-0"



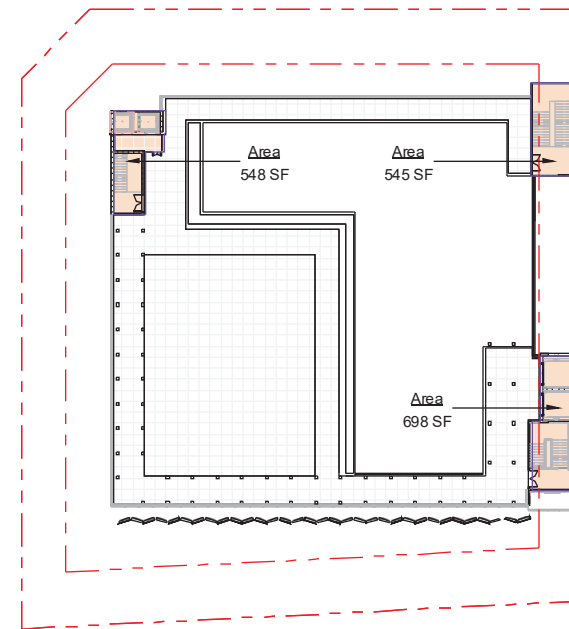
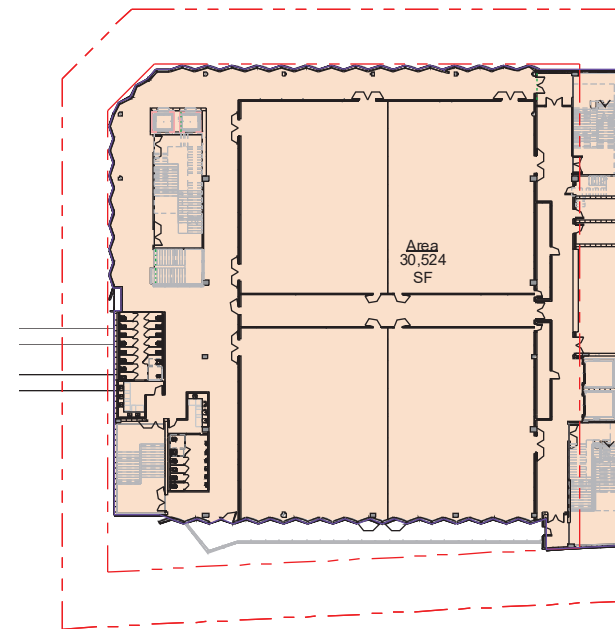
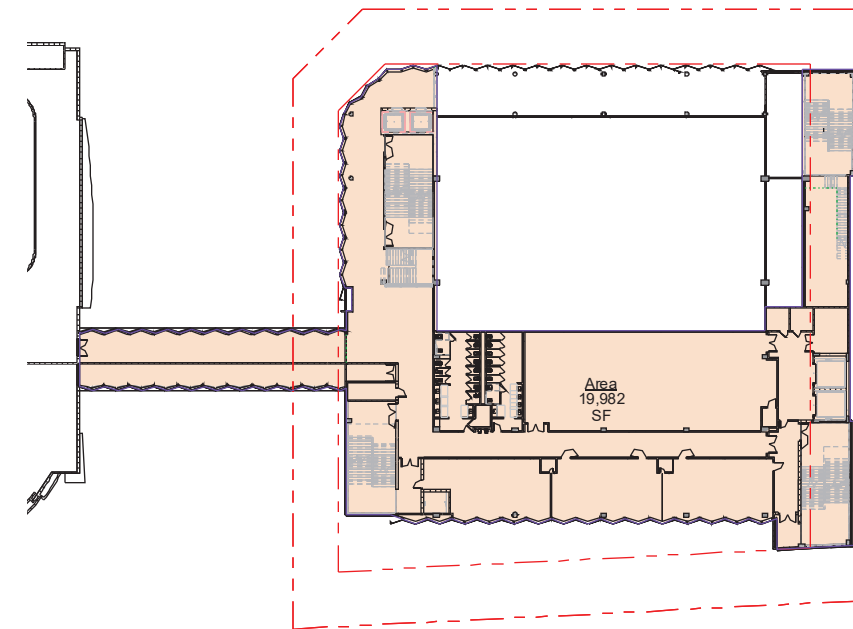


1 GROSS AREA - BASEMENT L2
GA-1.00 1/32" = 1'-0"

2 GROSS AREA - BASEMENT L1
GA-1.00 1/32" = 1'-0"

3 GROSS AREA - GROUND LEVEL
GA-1.00 1/32" = 1'-0"

4 GROSS AREA - 2ND LEVEL
GA-1.00 1/32" = 1'-0"



5 GROSS AREA - 3RD LEVEL
GA-1.00 1/32" = 1'-0"

6 GROSS AREA - 4TH LEVEL
GA-1.00 1/32" = 1'-0"

7 GROSS AREA - ROOF DECK LEVEL
GA-1.00 1/32" = 1'-0"

GROSS AREA SCHEDULE	
LEVEL	AREA
BASEMENT LEVEL 2	32,735 SF
BASEMENT LEVEL 1	32,732 SF
GROUND LEVEL	27,197 SF
LEVEL 2	30,027 SF
LEVEL 3	19,982 SF
LEVEL 4	30,524 SF
ROOF DECK LEVEL	1,791 SF
Grand total	174,987 SF