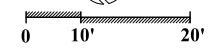


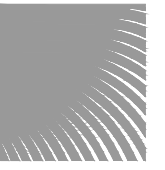
**FB GARAGE & BALLROOM  
EXPANSION  
4441 COLLINS AVE., MIAMI BEACH, FLORIDA  
GROUND LEVEL PLANTING PLAN**

REVISIONS:


**MARCH 20, 2020**  
DATE  
**J.R.**  
DRAWN BY:  
**M.J.**  
APPROVED BY:

This drawing is the property of Design Studio Boca, and is an instrument of service not to be reproduced in whole or in part without the express written permission of same.





**DSBOCA**  
design studio boca

landscape architects  
and planners

LC - 0000396  
2300 Corporate Blvd. NW, Suite 214  
Boca Raton, Florida 33431  
Ph: 561.955.8623  
Fax: 561.362.4749

email: landscapearchitects@dsboca.com



Digitally signed by Mark  
Jacobsen  
Date: 2020.04.03 13:44:24  
-0400'  
Adobe Acrobat Reader version:  
2020.006.20042

**FB GARAGE & BALLROOM  
EXPANSION  
4441 COLLINS AVE., MIAMI BEACH, FLORIDA  
ROOF DECK PLANTING PLAN**

REVISIONS:


**MARCH 20, 2020**  
DATE  
**J.R.**  
DRAWN BY:  
**M.J.**  
APPROVED BY:

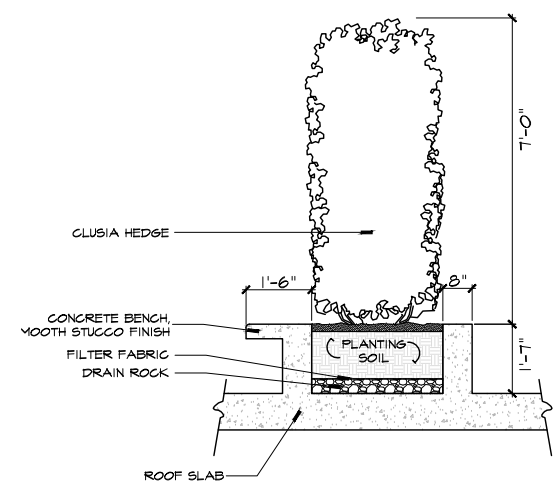
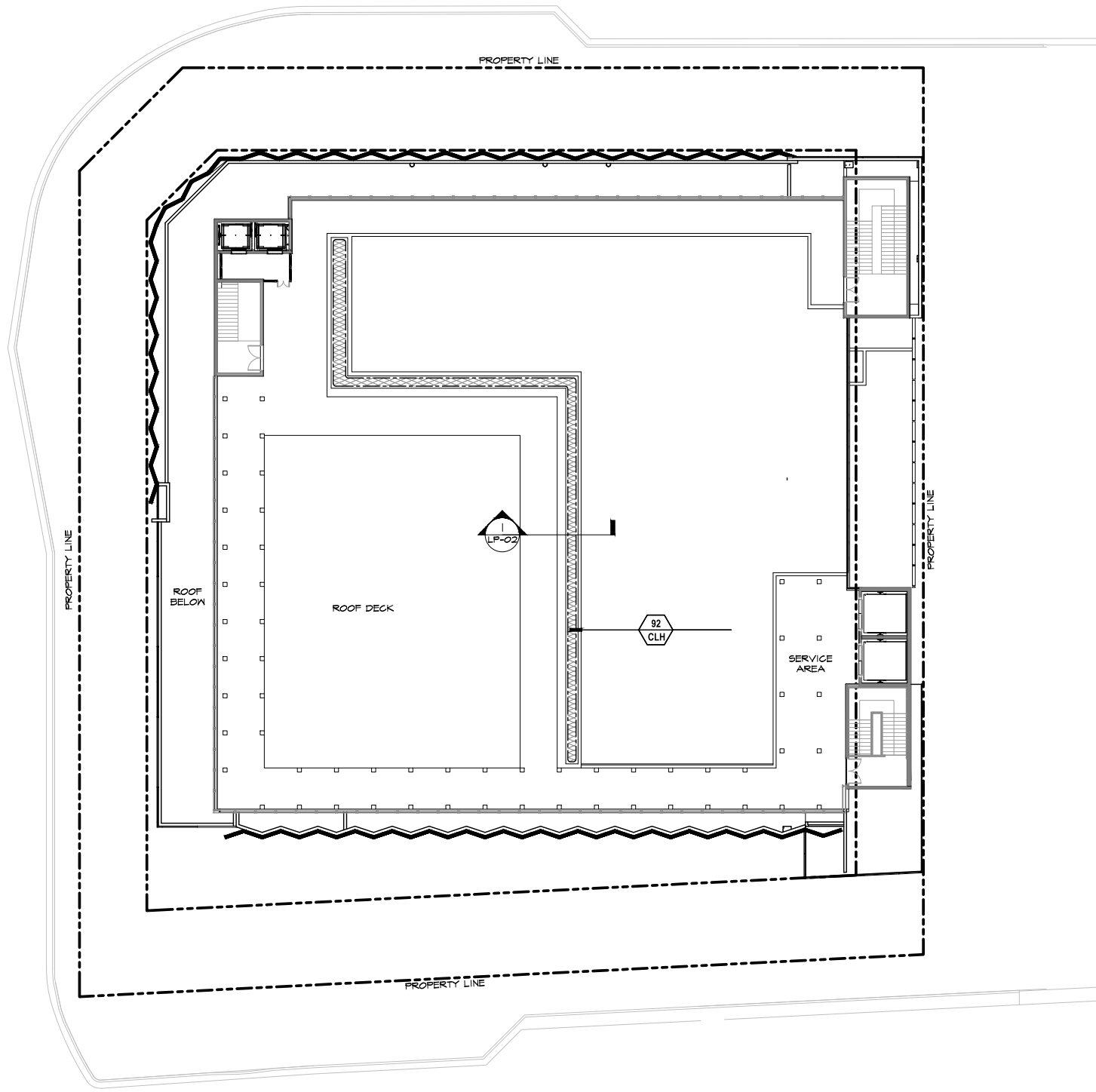
This drawing is the property of  
Design Studio Boca, and is an  
instrument of service not to be  
reproduced in whole or in part  
without the express written  
permission of same.

**LP-02**

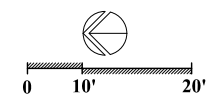
COLLINS AVE.

44TH STREET

INDIAN CREEK DR.



**1** PLANTER SECTION  
LP-02 N.T.S.





1. Scope:

The work includes furnishing all plants, materials, equipment and labor necessary for planting of plant materials indicated on the drawings and in these specifications. A list of plants is attached to these specifications.

2. Plant Materials & Protection:

- A. All plant materials shall be nursery grown unless otherwise noted.
- Spread (or Spr.): Indicates average spread to midpoint of current season's growth.
- Height (or O.A.): Indicates overall height from top of ball to midpoint of current season's growth.
- G.T.: Indicates clear trunk measurement from top of ball to first branching (see tree & Palm Planting Diagrams)
- Meter of Wood (or Meter of Hard Grey Wood): Indicates measurement of Palms from top of ball to top of solid trunk before start of frond stalks or green'boots'. (See Palm Planting Diagram)
B. Quantities: All quantities indicated on the plant list are intended as a guide for the bidders and does not relieve the bidder of his responsibility to do a comprehensive plant take off.
C. Quality and Sizes: Plants shall have a habit of growth that is normal for the species and shall be healthy, vigorous and equal or exceed the measurements specified in the plant list...
D. Substitution: Plant substitution requests by the Contractor will be considered by the Architect/Landscape Architect only upon submission of proof that any plant is not obtainable...
E. Protection of Plants: 1. Root Protection A. Balled and Burlapped Plants (B & B) shall be dug with natural balls of earth of sufficient diameter and depth to encompass the fibrous and feeding root system...

- 2. Protection During Transporting: All plant material shall be protected from possible bark injury or breakage of branches.
3. Protection After Delivery: Plants which cannot be planted immediately upon delivery to the site shall be covered with moist soil, mulch, or other protection from the drying of wind and sun.
4. Protection of Palms: Only a minimum of fronds shall be removed from the crown of the palm trees to facilitate moving and handling.
5. Protection During Planting: Trees moved by winch or crane shall be thoroughly protected from chain marks, girdling or bark slippage by means of other approved methods.

3. Materials:

- A. Commercial Fertilizer: Commercial fertilizer shall be organic fertilizer containing nitrogen, phosphoric acid and potash in equal percentages, 6-6-6 with micro nutrients.
C. Planting Soil: Planting soil for all plantings shall be sandy loam and shall contain a 25% minimum amount of decomposed organic matter.
D. Mulch: Mulch material to be shredded "dark brown" hybrid mulch B grade or better, moistened at time of installation to prevent wind displacement.
E. Drainage Stone (when applicable): Drainage stone shall be gravel or crushed stone reasonably free of sharp edges - 1/2"-1 1/2" in diameter - as required in the bottom of raised planters.
F. Filter Fabric:(when applicable): Filter fabric, as required between gravel and soil in planters to be Densitt "Filter-fabric" (800)888-9669 or equal.

4. Planting Operations:

- A. Soil Preparation: All existing soil and new fill/berms shall be treated with an approved weed killer such as "Round Up" according to manufacturer's specifications.
B. Layout: Location for plants and outlines of areas to be planted are indicated on the drawings.
C. Excavation for Planting: Excavation of holes shall extend to the required sub-grades as specified hereunder.
D. Balled and Burlapped Plants: After final setting, loosen wrappings of balled and burlapped plants and roll wrappings back from top of ball, leaving ball unbroken.
E. Container Grown Plants: Container grown plants shall, when delivered, have sufficient root growth to hold earth intact when removed from container.
F. Pit Sizes: Minimum diameter (Width) and depth of planting pits for balled and burlapped, and container grown plants shall be as follows:
-Diameter-Trees: 18" greater than diameter of ball or spread of roots.
-Diameter-Shrubs: 6" greater than diameter of ball or spread of roots.
-Depth-Trees and Shrubs: 4" greater than depth of ball or roots to provide 4" of topsoil backfill under the root ball.
G. Backfilling: When pit has been excavated as specified in Paragraph IV-C, the pit shall be backfilled with material as specified in Paragraph III. A, B, C, D, and IV. B and shown in the Typical Tree and Shrub diagrams (attached).
H. Setting Trees and Shrubs: Unless otherwise specified all trees and shrubs shall be planted in pits, centered and set on four inches (4") of compacted topsoil to such depths that the finished grade level of the plant after settlement shall be the same as that at which the plant was grown.
I. Setting Palms: All palms shall be planted in sand, thoroughly washed in during planting operations and with a shallow saucer depression left at the soil line for future waterings.
J. Pruning - New Plant Material: Remove dead and broken branches from all plant material. Prune to retain typical growth habit of individual plants with as much height and spread as is practicable.
K. Guying Tree: (See "Typical Tree Planting Diagram" included herein.) Guy all trees 1/2 inches in caliper and greater, in three directions with two strands of No. 12 galvanized wire attached to approved anchors driven below grade.
L. Mulching: All trees and shrub beds shall be mulched immediately after planting to a two inch (2") depth.
M. Excess Excavated Soil: Excess excavated soil shall be disposed of by the Contractor at no additional expense to the Owner, at Owner's discretion.
N. Relocated Material (when applicable): Existing material shown on the plan to be relocated shall be root-pruned as far ahead of time as necessary to move them safely, and shall be protected and treated as new material, as previously specified.
O. Disposition of Existing Material: All existing plant material not shown as remaining or relocated shall be removed from the site at no additional cost to the Owner, at Owner's discretion.

5. Sod

- A. Sod: The Landscape Contractor shall submit a unit price per cubic yard for the supply and distribution of planting soil as herein before specified, to be applied at a depth of one inch (1"), to all areas receiving sod.
B. Grades: It shall be the responsibility of the Landscape Contractor to finish (fine) grade all landscape areas, eliminating all bumps, depressions, sticks, stones and other debris to the satisfaction of the Architect/Landscape Architect.
C. The sod shall be as called for on the landscape plans. Sod shall be of firm tough texture, having a compact growth of grass with good root development, and shall contain no weeds or any other objectionable vegetation.
D. Before being cut and lifted, the sod shall have been mowed at least three times with a lawn mower, with the final mowing not more than seven days before the sod is cut.
E. Solid sod shall be laid with closely abutting joints with a tamped or rolled, even surface. It shall be the responsibility of the Contractor to bring the sod edge in a neat, clean manner to the edge of all paving and shrub areas.

6. Clean-up:

Any soil, peat or similar material which has been brought onto any paved areas shall be removed promptly keeping these areas clean as the work progresses. Upon completion of the planting, all excess soil, stones and debris which has not been previously cleaned up shall be removed from the site or disposed of as directed by the Architect/Landscape Architect.

7. Maintenance:

- A. Maintenance shall begin immediately after each plant is planted and shall continue until all planting has passed final inspection and acceptance by the Owner.
B. The Contractor shall deep-water all trees and shrubs for a period of ninety (90) days after planting.
8. Inspection and Acceptance: A. Inspection: Inspection of work to determine completion of contract, exclusive of the possible replacement of plants, will be made by the Owner and/or Landscape Architect at the conclusion of all planting and at the written request of the Contractor.
B. Acceptance: After inspection, the Contractor will be notified by the Owner of the acceptance of all plant material and workmanship, exclusive of the possible replacement of plants subject to guarantee.

9. Guarantee and Replacement:

- A. Guarantee: The Contractor shall furnish a written guarantee warranting all materials, workmanship and plant materials, for a period specified in the General Conditions of Project Specifications.
B. Replacement: During guarantee period, any plant required under this contract that is dead or not in satisfactory condition, as determined by the Architect/Landscape Architect, shall be replaced within two weeks of notification by the Architect/Landscape Architect.
C. Material and Operations: All replacements shall be plants of the same kind and size as specified in the plant list. They shall be furnished and planted as specified herein.

10. Care and Maintenance Schedule:

- A. The Contractor shall furnish the Owner's Maintenance staff with a written and detailed description for the care and maintenance of all plant materials and irrigation systems at the time of final inspection. Contractor will also provide a one year Landscape Maintenance Contract, to take affect after Substantial Completion of the project.

11. Permits and Regulations:

- A. The Contractor shall give all notices and comply with all laws, ordinances, rules and regulations bearing on the conduct of this work as drawn and specified.

12. Protection of Work and Property:

- A. The Contractor shall continuously maintain adequate protection of all his work from damage and theft and shall protect the Owner's property from injury and loss arising in connection with this contract, making good any such loss or injury or damage except where caused by Owner or his agents.
B. The Contractor shall provide protection for existing trees and other plant material as designated by drawings, by Owner's representative or by local authorities.
C. A competent superintendent, foreman or workman capable of reading drawings and acting on behalf of the Contractor shall be kept on the work during its progress.

13. Changes In The Work:

- A. The Contractor shall conduct a soil survey of the site to determine the need for any additives to overcome severe conditions not met by normal planting soil requirements.
B. The Contractor shall advise the Owner and Landscape Architect of any special site conditions (high water table, light or soil conditions, etc.) that might require change of plant material or adjustment to finish elevation shown.

14. Landscape Architect:

- A. The Landscape Architect is the author of the design and agents for its execution. When his services are used by the Owner for supervision, he shall act impartially between the Owner and Contractor and shall have authority to reject all work and materials which do not conform to the contract.

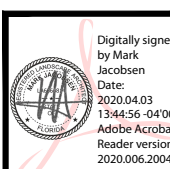
The Contractor shall remove from the site all materials considered not up to specifications by the Landscape Architect and replace with suitable materials.

15. Obstructions:

- A. The Contractor shall acquaint himself with the existence and location of all surface and subsurface structures, utilities and installations before commencing any work, and shall avoid any disturbance or damage to them throughout the course of the work.



landscape architects and planners
LC - 0000396
2300 Corporate Blvd. NW, Suite 214
Boca Raton, Florida 33431
Ph: 561.955.8623
Fax: 561.362.4749
email: landscapedesign@dsboca.com

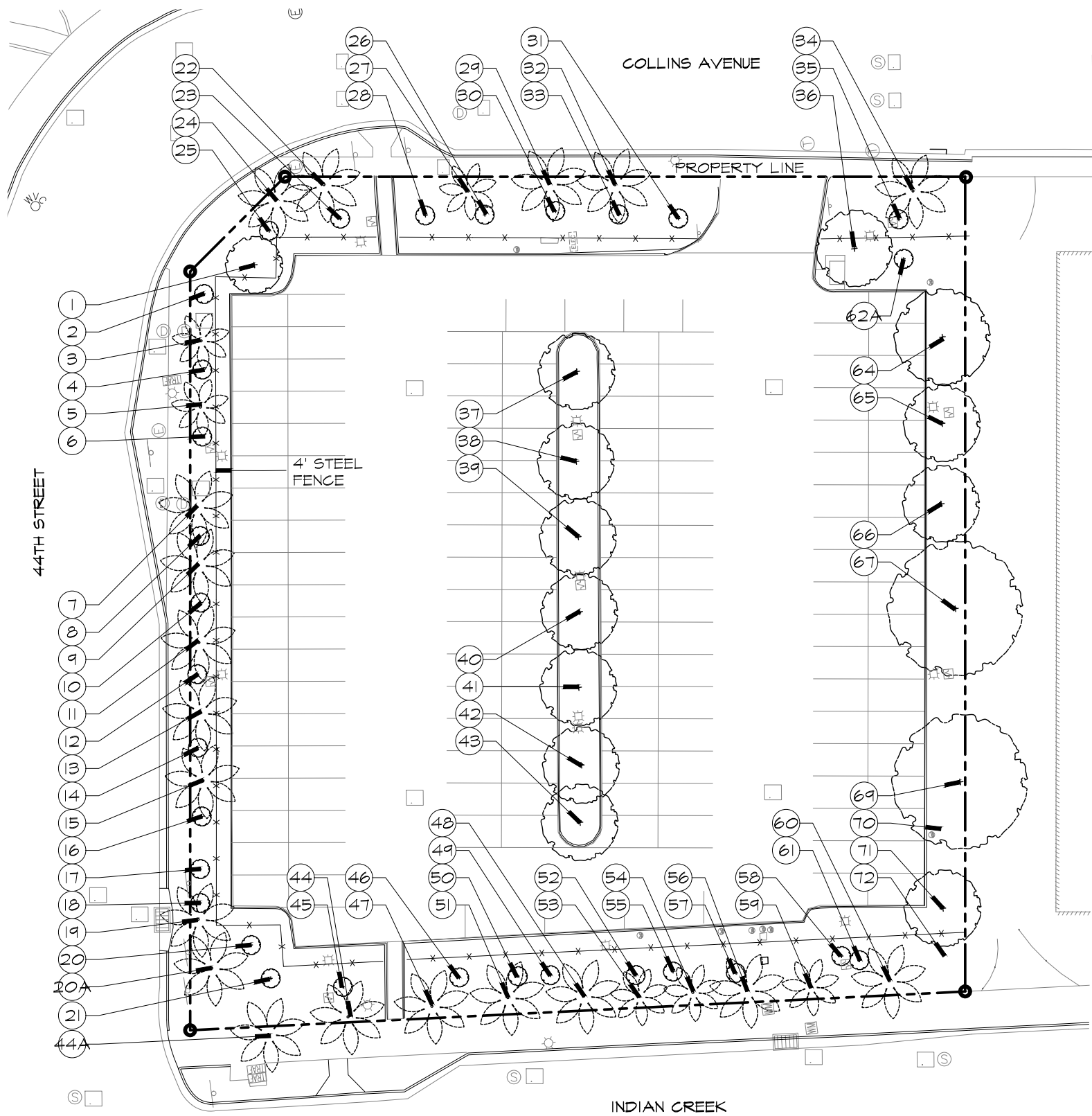


FB GARAGE & BALLROOM EXPANSION 4441 COLLINS AVE., MIAMI BEACH, FLORIDA PLANTING SPECIFICATIONS

Table with 2 columns: REVISIONS, and empty rows for revision tracking.

MARCH 20, 2020 DATE
J.R. DRAWN BY:
M.J. APPROVED BY:

This drawing is the property of Design Studio Boca, and is an instrument of service not to be reproduced in whole or in part without the express written permission of same.



MITIGATION STATEMENT:  
 OUR SITE IS AN URBAN SITE AND AS SUCH ALL THE PROPOSED LANDSCAPE IS BEING USED TO MEET OUR OVERALL SITE REQUIREMENT; A MITIGATION 'PAYMENT IN LIEU' WILL BE MADE TO THE CITY OF MIAMI BEACH TREE TRUST FUND.

TREE #	COMMON NAME	BOTANICAL NAME	HEIGHT (ft)	WIDTH (ft)	DBH (in)	CLEAR TRUNK (ft)	HEALTH CONDITION	HEALTH CONDITION %	OBSERVATIONS
1	Brazilian Beautyleaf	<i>Cabphylum brasiliense</i>	25	20	11.5		Fair	53%	Girdled trunk, poor structure, deadwood and trunk lean (south)
2	Ligustrum	<i>Ligustrum japonicum</i>	8.5	6.5	12 (multi)		Fair	51%	Shaped, poor structure, deadwood
3	Coconut Palm	<i>Cocos nucifera</i>	33.5	14	9	19.50	Fair	57%	Nutrient deficiencies, trunk wounds
4	Ligustrum	<i>Ligustrum japonicum</i>	7	6	10.75 (Multi)		Fair	51%	Shaped, poor structure, deadwood
5	Coconut Palm	<i>Cocos nucifera</i>	23.5	14	7.25	12.00	Poor	39%	Severe penciling, large trunk wound (east), nutrient deficiencies
6	Ligustrum	<i>Ligustrum japonicum</i>	8.5	6.5	12 (multi)		Fair	51%	Shaped, poor structure, flush cuts
7	Coconut Palm	<i>Cocos nucifera</i>	30.5	14	12.25	19.00	Fair	57%	Nutrient deficiencies, trunk wounds
8	Ligustrum	<i>Ligustrum japonicum</i>	8.5	6.5	11 (multi)		Fair	51%	Shaped, poor structure, deadwood
9	Coconut Palm	<i>Cocos nucifera</i>	39	14	10	24.50	Good	61%	Good vigor
10	Ligustrum	<i>Ligustrum japonicum</i>	8.5	6.5	11		Fair	51%	Shaped, poor structure, stub and flush cuts
11	Coconut Palm	<i>Cocos nucifera</i>	38	14	12.25	24.00	Fair	51%	Curved trunk, nutrient deficiencies, trunk wounds (west and east)
12	Ligustrum	<i>Ligustrum japonicum</i>	8	6	9		Fair	50%	Shaped, poor structure, flush cuts, deadwood
13	Coconut Palm	<i>Cocos nucifera</i>	31.5	14	9.5	18.50	Poor	39%	Large trunk wound (east), additional trunk wounds (north and south), nutrient deficiencies
14	Ligustrum	<i>Ligustrum japonicum</i>	8.5	6	12.5 (multi)		Fair	49%	Shaped, poor structure, visual evidence of decay
15	Coconut Palm	<i>Cocos nucifera</i>	36.5	14	12	21.50	Fair	57%	Nutrient deficiencies, trunk wounds (east and south), curved trunk
16	Ligustrum	<i>Ligustrum japonicum</i>	7	6	7 (multi)		Fair	51%	Shaped, poor structure, flush cuts
17	Coconut Palm	<i>Cocos nucifera</i>	33	14	12.25	19.50	Poor	39%	Severe penciling, trunk wounds (south and east), nutrient deficiencies
18	Ligustrum	<i>Ligustrum japonicum</i>	8.5	8	12.5		Fair	51%	Shaped, poor structure, flush cuts, deadwood
19	Ligustrum	<i>Ligustrum japonicum</i>	8.5	8	12		Fair	50%	Shaped, poor structure, visual evidence of decay, flush cuts
20	Brazilian Beautyleaf	<i>Cabphylum brasiliense</i>	23	20	10		Fair	54%	Poor structure, trunk girdling (wellington tape)
20A	Coconut Palm	<i>Cocos nucifera</i>	37	14	10.5	21.00	Poor	39%	Significant penciling, trunk wound (north) and nutrient deficiencies
21	Ligustrum	<i>Ligustrum japonicum</i>	5.5	6.5	11.5		Fair	51%	Shaped, poor structure, deadwood
22	Coconut Palm	<i>Cocos nucifera</i>	40	14	11.75	25.50	Fair	46%	Severe penciling, nutrient deficiencies
23	Ligustrum	<i>Ligustrum japonicum</i>	8.5	6.5	12.75		Fair	50%	Shaped, poor structure, deadwood, stub cuts
24	Coconut Palm	<i>Cocos nucifera</i>	35	14	10.75	22.00	Fair	46%	Large trunk wound (north), trunk curve, nutrient deficiencies
25	Ligustrum	<i>Ligustrum japonicum</i>	8.5	6.5	12.5		Fair	49%	Shaped, poor structure, stub cuts and deadwood
26	Ligustrum	<i>Ligustrum japonicum</i>	8.5	8	12.25		Fair	51%	Shaped, poor structure, deadwood
27	Coconut Palm	<i>Cocos nucifera</i>	25.5	14	10.5	14.50	Fair	47%	Nutrient deficiency, frond burn, trunk wounds (north)
28	Ligustrum	<i>Ligustrum japonicum</i>	8.5	6.5	12		Fair	51%	Shaped, poor structure, deadwood
29	Coconut Palm	<i>Cocos nucifera</i>	37	14	10.5	22.50	Poor	39%	Trunk curve, nutrient deficiencies, vertical trunk cracks
30	Ligustrum	<i>Ligustrum japonicum</i>	8.5	8	11.5		Fair	51%	Shaped, poor structure, deadwood
31	Ligustrum	<i>Ligustrum japonicum</i>	7.5	8	12		Fair	51%	Shaped, poor structure, deadwood
32	Coconut Palm	<i>Cocos nucifera</i>	39	14	10.5	21.00	Fair	42%	Trunk curve, nutrient deficiencies, large trunk wound (south)
33	Ligustrum	<i>Ligustrum japonicum</i>	8	8	12.5		Fair	51%	Shaped, poor structure, deadwood
34	Coconut Palm	<i>Cocos nucifera</i>	39.5	14	11.5	23.00	Fair	49%	Nutrient deficiencies, trunk wound (east)
35	Ligustrum	<i>Ligustrum japonicum</i>	8.5	8	11		Fair	51%	Shaped, poor structure, deadwood
36	Brazilian Beautyleaf	<i>Cabphylum brasiliense</i>	31	22	11		Fair	47%	Girdled trunk (wellington tape), poor structure, deadwood
37	Mahogany	<i>Svetenia mahagoni</i>	28.5	18	9.75		Fair	52%	Poor structure, deadwood, large trunk wound (south), confined roots
38	Mahogany	<i>Svetenia mahagoni</i>	24	17	10.5		Fair	53%	Poor structure, over-lifted, deadwood, stub cuts, confined roots
39	Mahogany	<i>Svetenia mahagoni</i>	25.5	20	11		Fair	48%	Poor structure, deadwood, stub cuts, confined root space
40	Mahogany	<i>Svetenia mahagoni</i>	25.5	14	10.5		Fair	50%	Poor structure, deadwood, canopy dieback, confined root space
41	Mahogany	<i>Svetenia mahagoni</i>	27.5	20	11.25		Fair	53%	Poor structure, deadwood, confined root space
42	Mahogany	<i>Svetenia mahagoni</i>	29	12	9.75		Fair	50%	Poor structure, deadwood, stub and flush cuts, confined root space
43	Mahogany	<i>Svetenia mahagoni</i>	29.5	17	10.25		Fair	53%	Poor structure, deadwood, stub cuts, confined root space
44	Ligustrum	<i>Ligustrum japonicum</i>	5.5	6	10		Fair	51%	Shaped, poor structure, deadwood
44A	Coconut Palm	<i>Cocos nucifera</i>	30	14	11.5	21.00	Fair	49%	Nutrient deficiencies, penciling
45	Coconut Palm	<i>Cocos nucifera</i>	32	14	10.5	21.50	Fair	47%	Nutrient deficiencies, penciling, trunk wounds (west and north)
46	Ligustrum	<i>Ligustrum japonicum</i>	5.5	4.5	11		Fair	49%	Shaped, poor structure, deadwood, visual evidence of decay
47	Coconut Palm	<i>Cocos nucifera</i>	31	14	9	21.50	Fair	49%	Nutrient deficiencies, penciling, trunk wounds, girdling (north)
48	Coconut Palm	<i>Cocos nucifera</i>	31.5	14	10.5	22.00	Fair	57%	Nutrient deficiencies, minor penciling
49	Ligustrum	<i>Ligustrum japonicum</i>	5.5	6	10		Fair	51%	Shaped, poor structure, deadwood
50	Ligustrum	<i>Ligustrum japonicum</i>	5.5	4.5	9.5		Fair	51%	Shaped, poor structure, deadwood
51	Coconut Palm	<i>Cocos nucifera</i>	36.5	14	9.5	24.00	Fair	47%	Nutrient deficiencies, trunk wound (west)
52	Ligustrum	<i>Ligustrum japonicum</i>	5.5	6.5	10.5		Fair	51%	Shaped, poor structure, deadwood
53	Coconut Palm	<i>Cocos nucifera</i>	28	14	10.5	17.50	Fair	52%	Nutrient deficiencies, penciling, trunk wounds (west and south)
54	Ligustrum	<i>Ligustrum japonicum</i>	5.5	8	10.5		Fair	51%	Shaped, poor structure, deadwood
55	Coconut Palm	<i>Cocos nucifera</i>	30.5	14	10	18.00	Fair	48%	Nutrient deficiencies, penciling
56	Ligustrum	<i>Ligustrum japonicum</i>	5.5	8	10.5		Fair	51%	Shaped, poor structure, deadwood
57	Coconut Palm	<i>Cocos nucifera</i>	44.5	14	13.5	31.50	Fair	49%	Nutrient deficiencies, trunk wounds (west and north)
58	Ligustrum	<i>Ligustrum japonicum</i>	6	8	11.25		Fair	51%	Shaped, poor structure, deadwood
59	Coconut Palm	<i>Cocos nucifera</i>	32.5	14	12	17.00	Fair	46%	Nutrient deficiencies, trunk wounds (north)
60	Coconut Palm	<i>Cocos nucifera</i>	40	14	13.25	26.50	Good	61%	Good vigor
61	Ligustrum	<i>Ligustrum japonicum</i>	6	4.5	10.5		Fair	48%	Shaped, poor structure, deadwood
62A	Ligustrum	<i>Ligustrum japonicum</i>	13.5	8.5	11		Fair	51%	Shaped, poor structure, deadwood
64	Brazilian Beautyleaf	<i>Cabphylum brasiliense</i>	26.5	22	9.5		Fair	47%	Poor structure, flush and stub cuts, confined roots and over-lifted canopy
65	Brazilian Beautyleaf	<i>Cabphylum brasiliense</i>	29	16	8.5		Fair	46%	Poor structure, flush and stub cuts, confined roots, trunk lean (north)
66	Brazilian Beautyleaf	<i>Cabphylum brasiliense</i>	30	16	9		Fair	48%	Poor structure, flush cuts, confined roots, girdling (wellington tape) and trunk lean (east)
67	Black Olive	<i>Bucida buceras</i>	33	36	20.5		Poor	38%	Poor structure, flush cuts, trunk cracks, girdling roots, confined root space
69	Black Olive	<i>Bucida buceras</i>	40	40	23		Fair	43%	Poor structure, flush cuts, over-lifted canopy, large diameter deadwood, trunk wound (north)
70	Brazilian Beautyleaf	<i>Cabphylum brasiliense</i>	17	6	4.25		Fair	45%	Poor structure, crowded canopy, trunk girdling (wellington tape)
71	Brazilian Beautyleaf	<i>Cabphylum brasiliense</i>	30.5	16	8.75		Fair	53%	Poor structure, canopy crowding
72	Brazilian Pepper	<i>Schinus terebinthifolius</i>	28	14	7		Poor	39%	Category 1 Exotic Invasive, does not require mitigation

I certify that all statements are true, complete and correct to the best of my knowledge and belief and that they are made in good faith.

Mark C. Williams FL-5221 AM, ISA Certified Arborist Municipal Specialist



landscape architects and planners  
 LC - 0000396  
 2300 Corporate Blvd. NW, Suite 214  
 Boca Raton, Florida 33431  
 Ph: 561.955.8623  
 Fax: 561.362.4749  
 email: landscapearchitect@dsboca.com

Digitally signed by Mark Jacobsen  
 Date: 2020.04.03 13:45:13 -0400  
 Adobe Acrobat Reader version: 2020.006.20042

**FB GARAGE & BALLROOM EXPANSION**  
 4441 COLLINS AVE., MIAMI BEACH, FLORIDA  
 TREE DISPOSITION PLAN

REVISIONS:


MARCH 20, 2020  
 DATE  
 M.S.  
 DRAWN BY:  
 M.J.  
 APPROVED BY:

This drawing is the property of Design Studio Bocca, and is an instrument of service not to be reproduced in whole or in part without the express written permission of same.

SHEET

TD-01