

The RALEIGH MASTERPLAN



OWNER

BSD RALEIGH PROPCO LLC
C/O SHVO

745 Fifth Avenue
New York, NY 10151
O: 212.380.2100

ARCHITECT

KOBI KARP ARCHITECTURE
& INTERIOR DESIGN, INC.

2915 Biscayne Boulevard, Suite 200
Miami, FL 33137
O: 305.573.1818

ARCHITECT

PETER MARINO ARCHITECT

150 East 58th Street
New York, NY 10022
O: 212.752.5444

ARCHITECT

ARTHUR MARCUS

1800 North Andrews Avenue #7F
Fort Lauderdale, FL 33311
O: 305.467.6141

ARCHITECT

JEAN-FRANCOIS
LEJEUNE

20 Island Avenue #302
Miami Beach, FL 33139
O: 305.772.6729

LANDSCAPE

ENEAS GARDEN DESIGN INC.

7500 Northeast 4th Court, Studio 104
Miami, FL 33138
O: 305.576.67027

CITY OF MIAMI BEACH
HISTORIC PRESERVATION BOARD
UPDATED PLANS IN RESPONSE
TO HPB DISCUSSION

AUGUST 11, 2020
(UPDATED)

PRESERVATION AND RESTORATION

2296

RALEIGH HOTEL
COLLINS AVENUE
MIAMI BEACH, FLORIDA.

3

The Raleigh Hotel, 1945





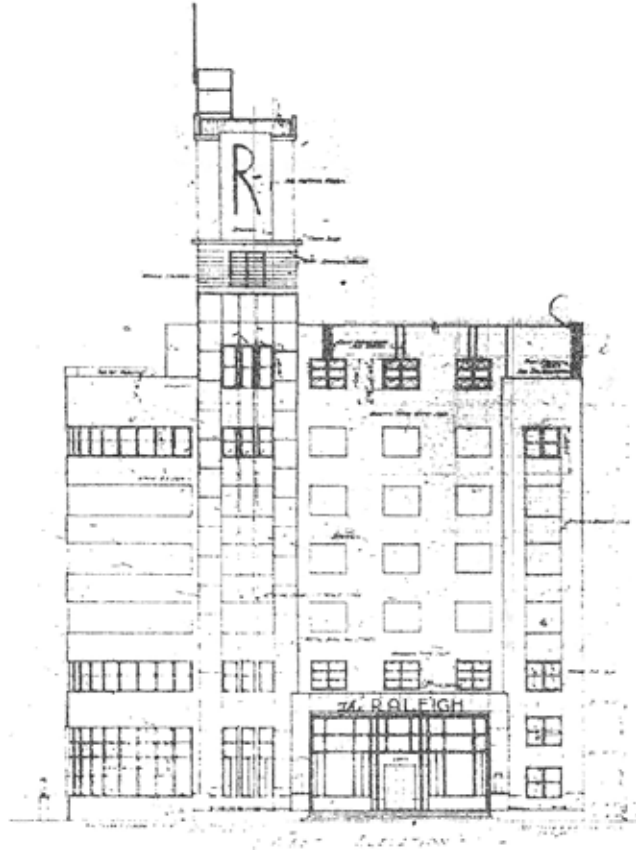
Proposed restoration of the Raleigh Hotel



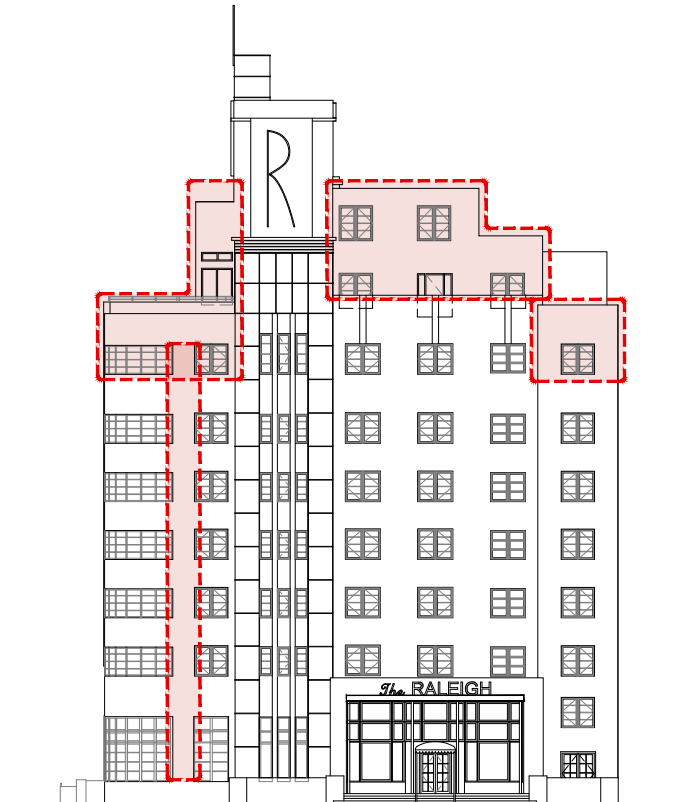
The Raleigh, Richmond, and South Seas Hotels, 1945



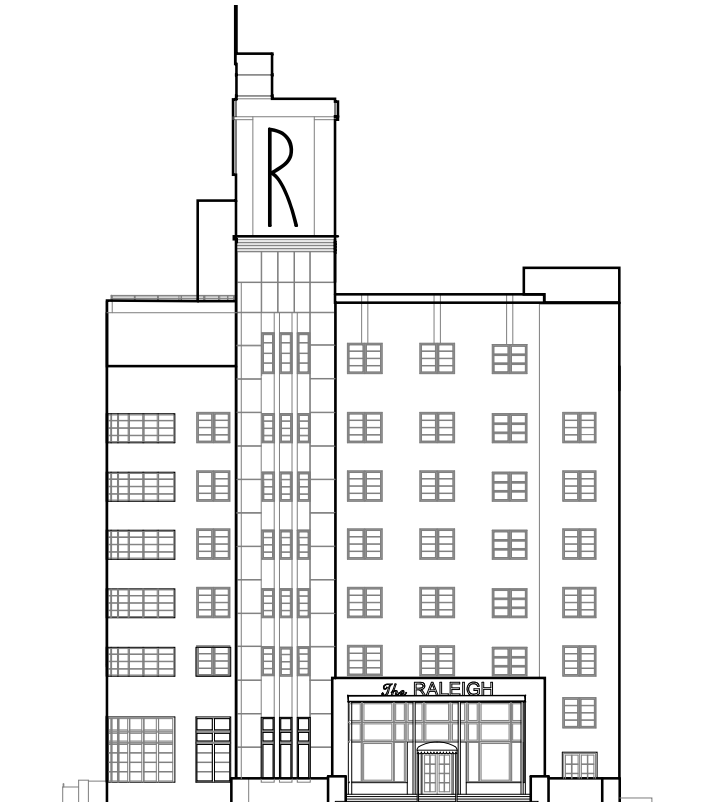
Proposed restoration of the Raleigh, Richmond, and South Seas Hotels



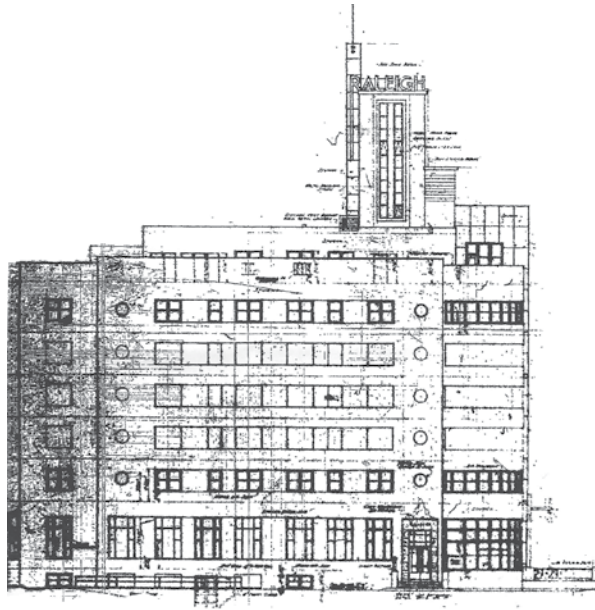
Original Elevation, 1940
Lawrence Murray Dixon (Microfilm)



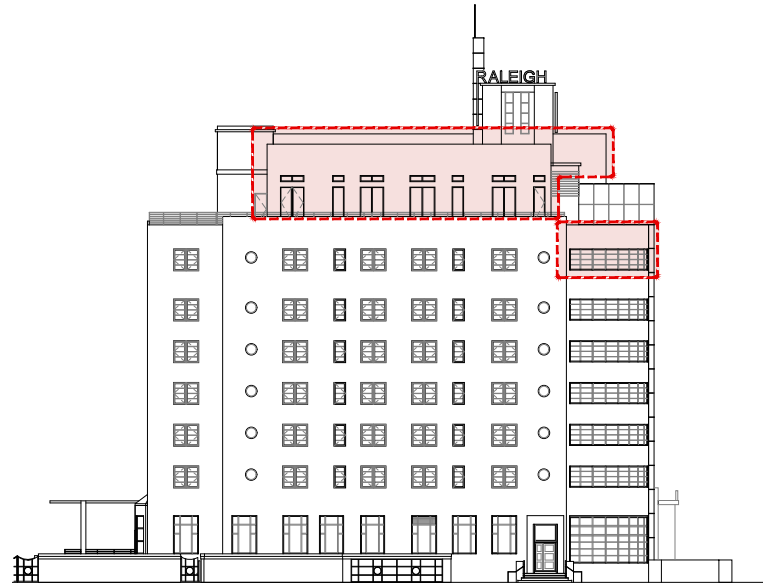
Existing Elevation (Approved)



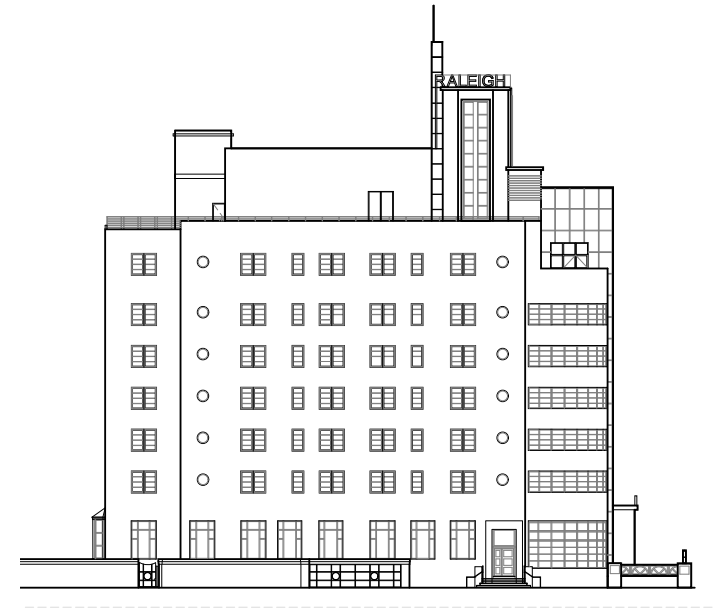
Proposed Elevation (Restoration)



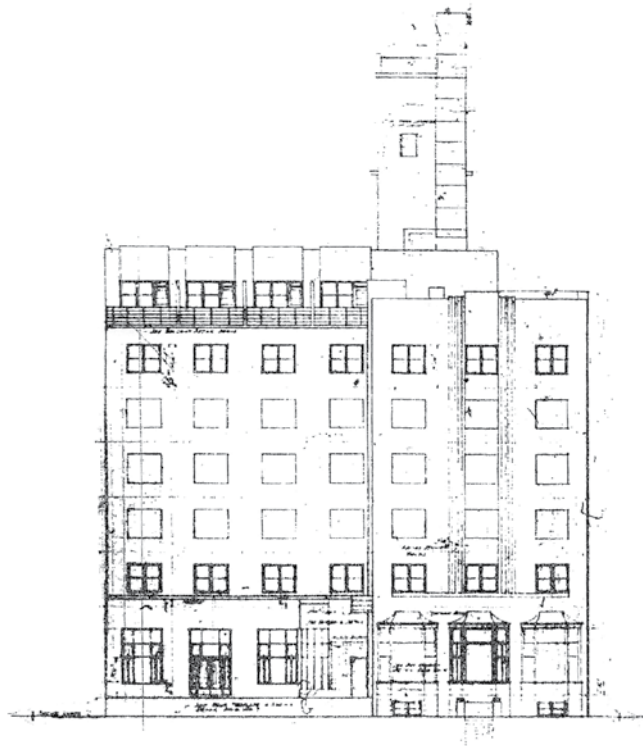
Original Elevation, 1940
Lawrence Murray Dixon (Microfilm)



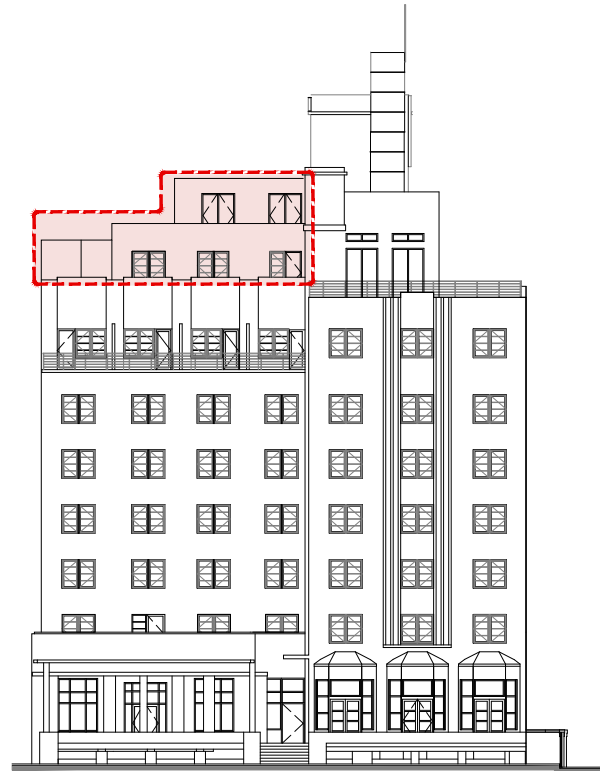
Existing Elevation (Approved)



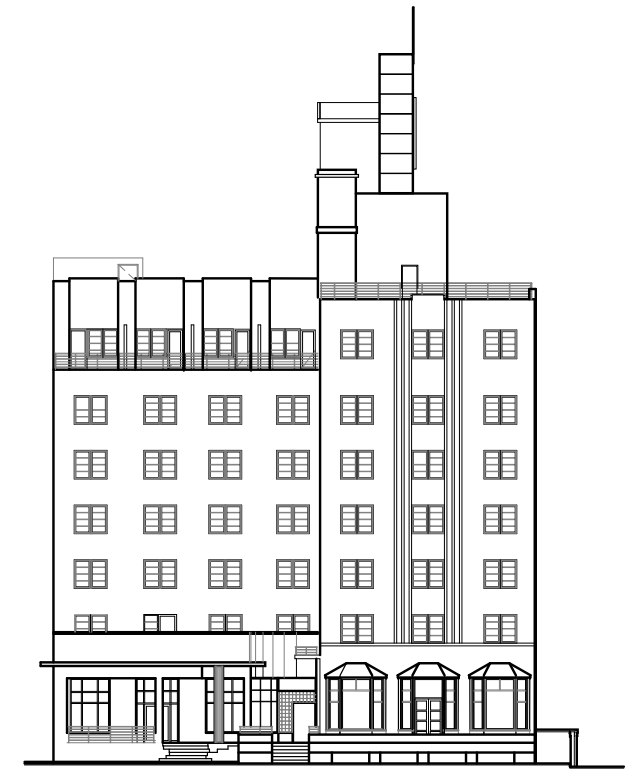
Proposed Elevation (Restoration)



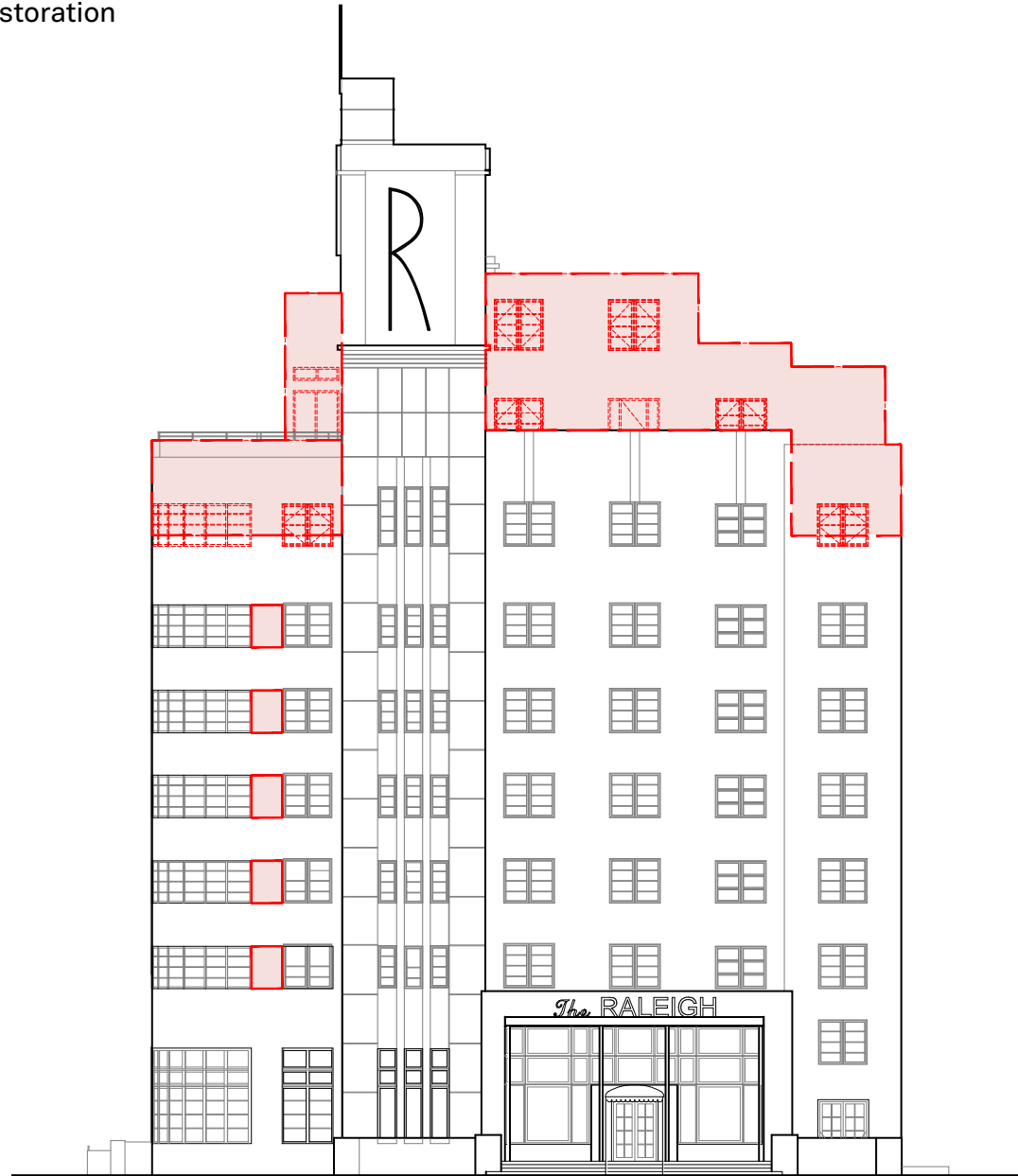
Original Elevation, 1940
Lawrence Murray Dixon (Microfilm)

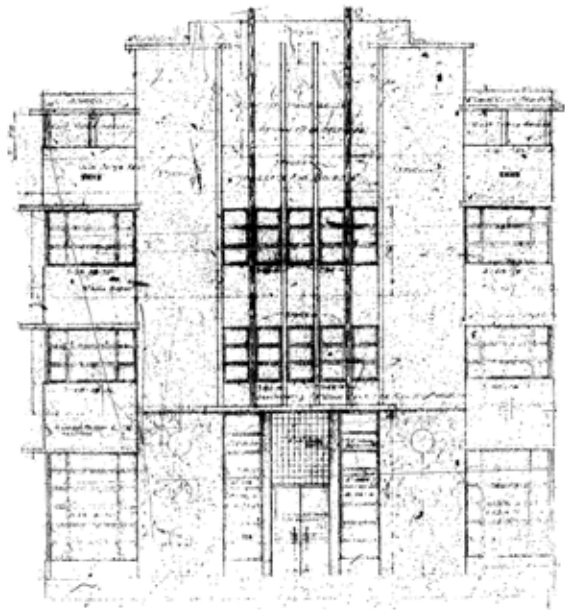


Existing Elevation (Approved)

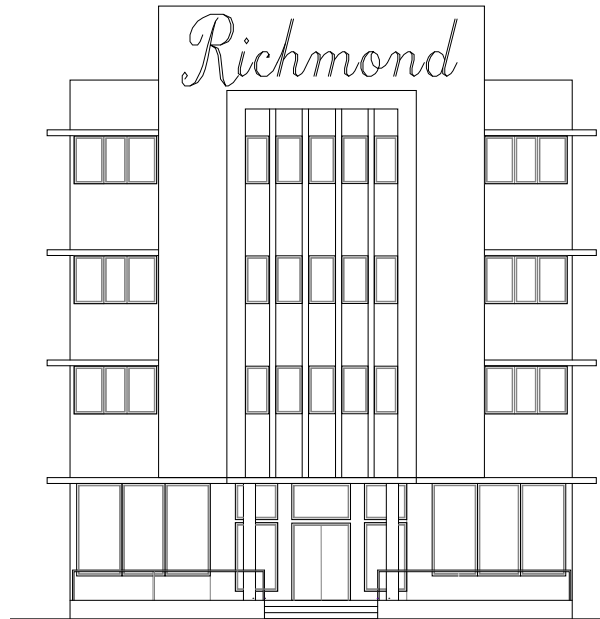


Proposed Elevation (Restoration)

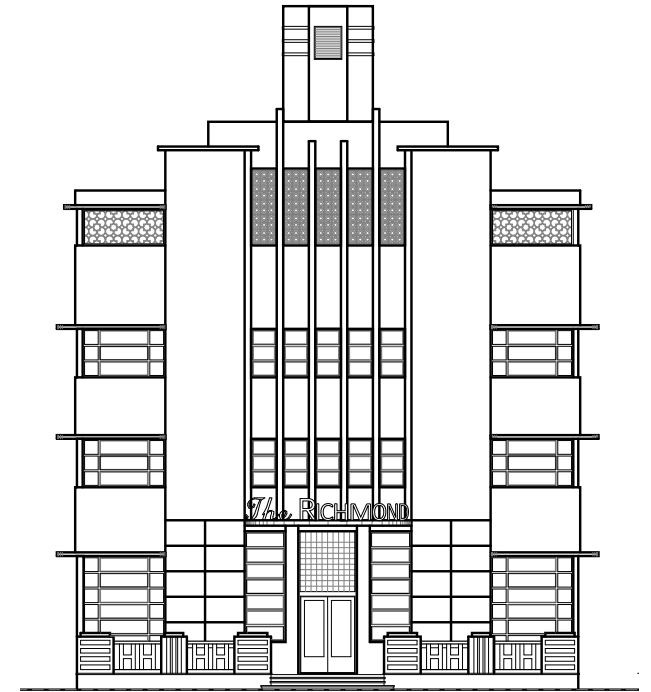




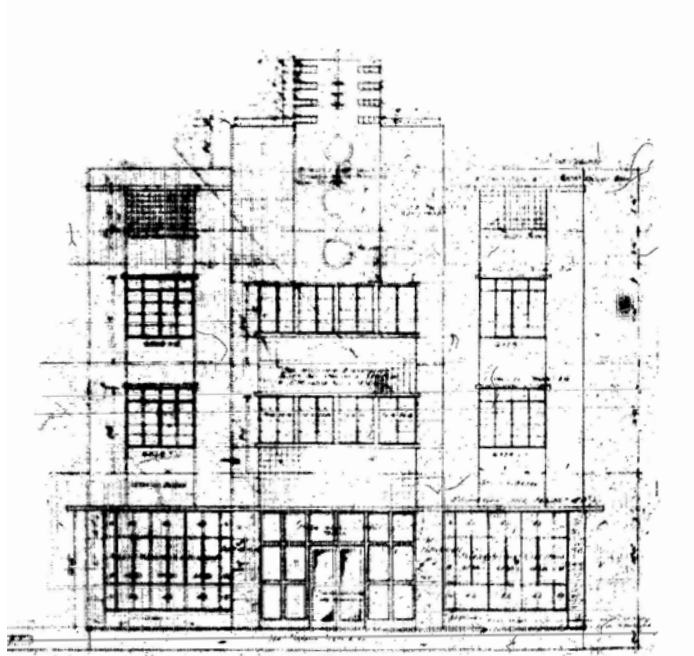
Original Elevation, 1940
Lawrence Murray Dixon (Microfilm)



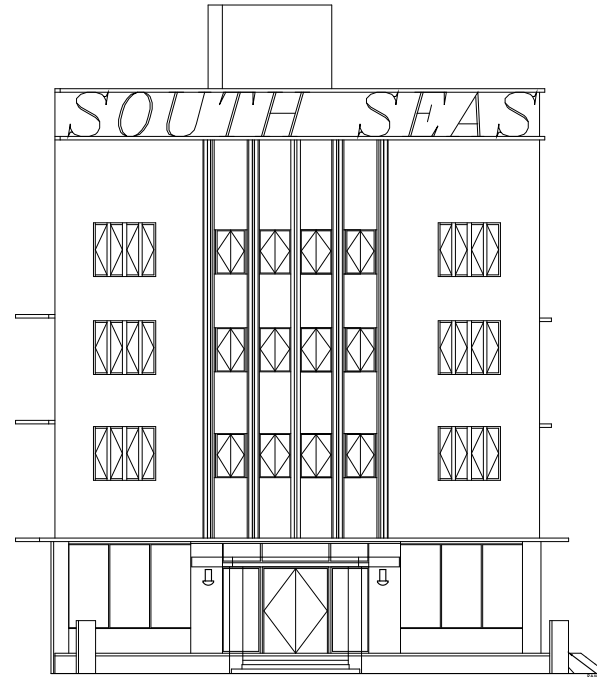
Existing Elevation



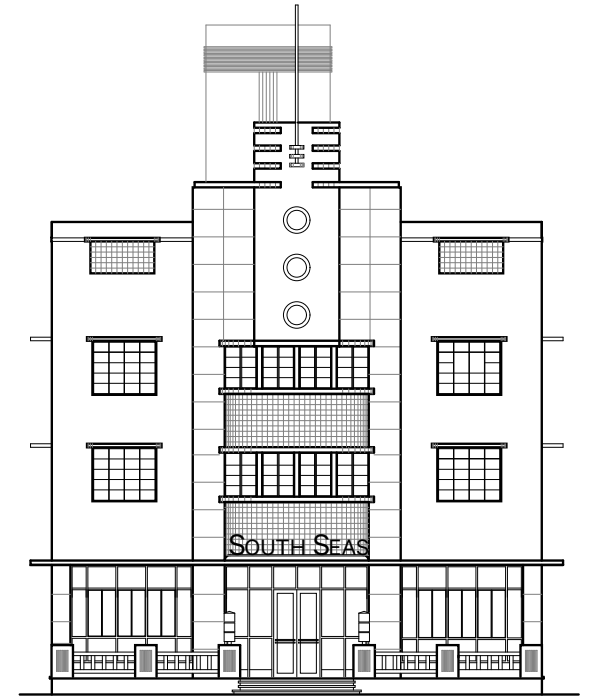
Proposed Elevation (Restoration)



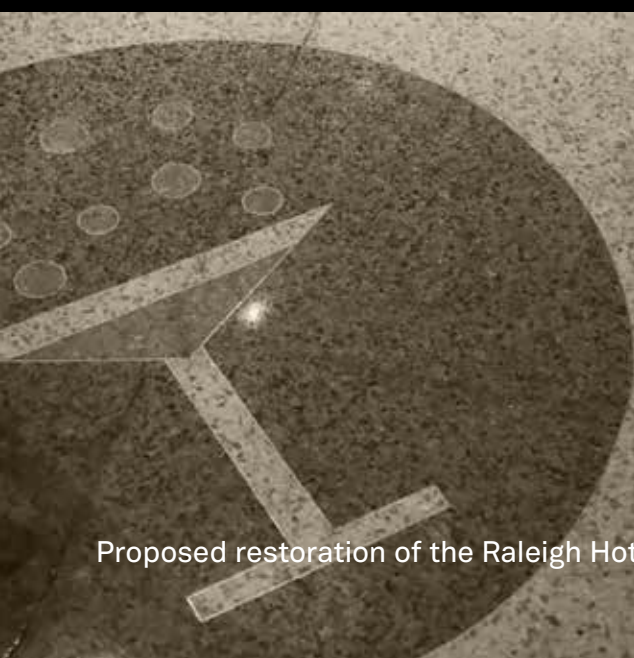
Original Elevation, 1940
Lawrence Murray Dixon (Microfilm)



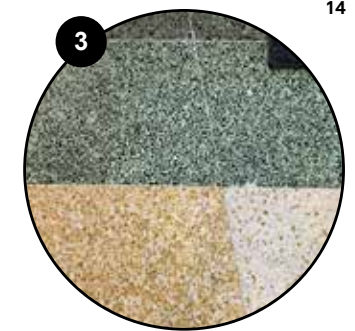
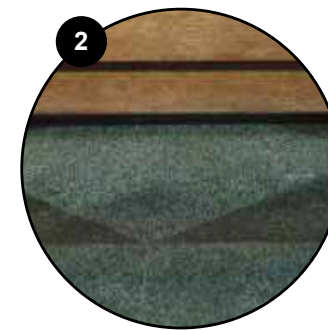
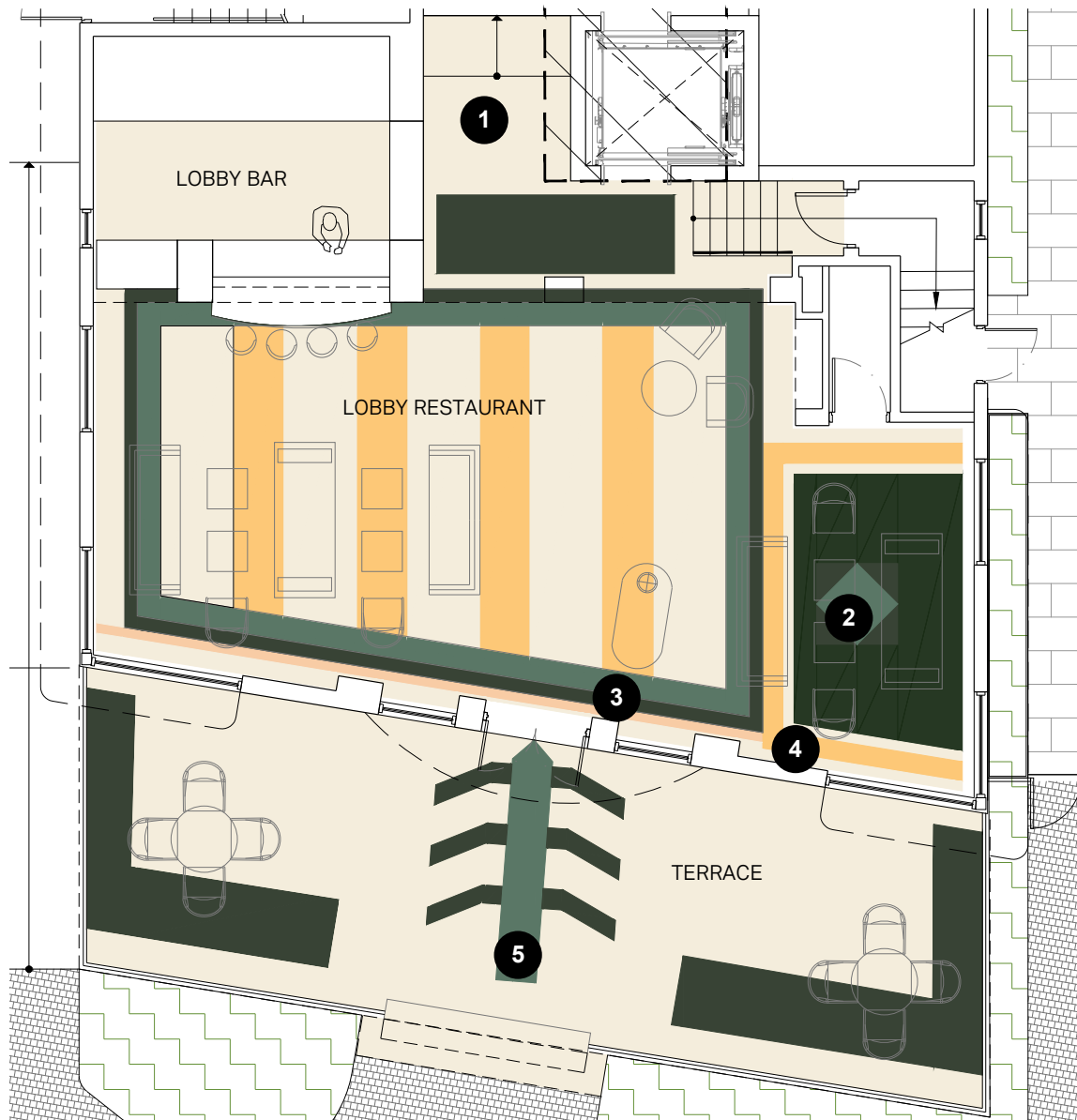
Existing Elevation



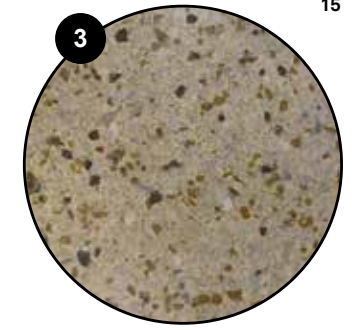
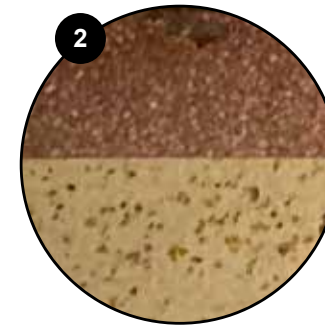
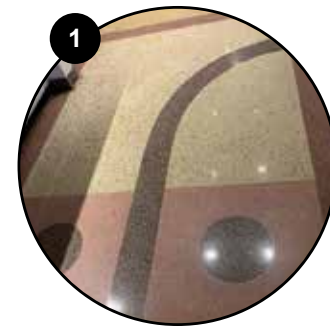
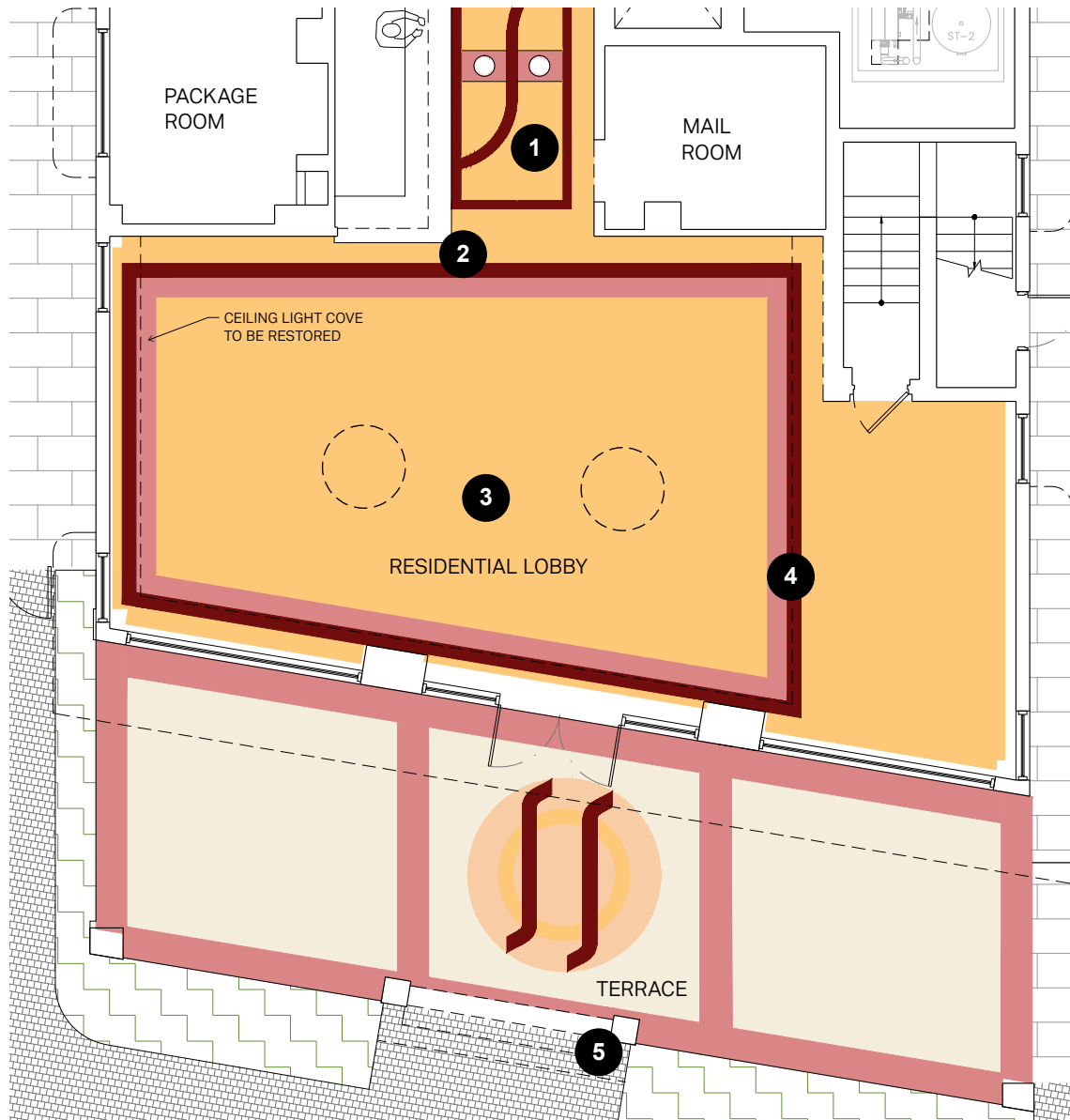
Proposed Elevation (Restoration)



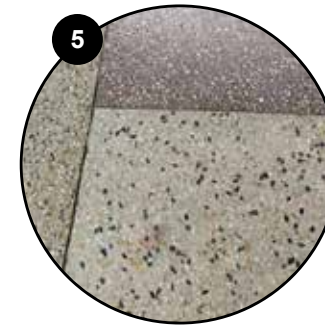
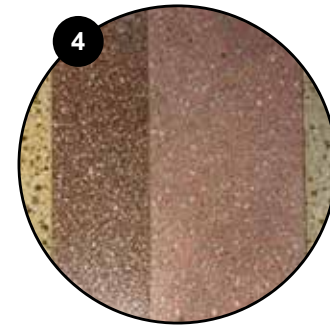
Proposed restoration of the Raleigh Hotel



Proposed restoration of the Richmond Hotel



15



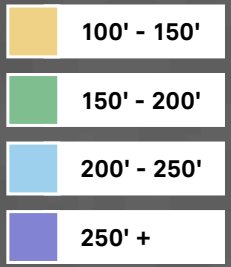
Proposed restoration of the South Seas Hotel

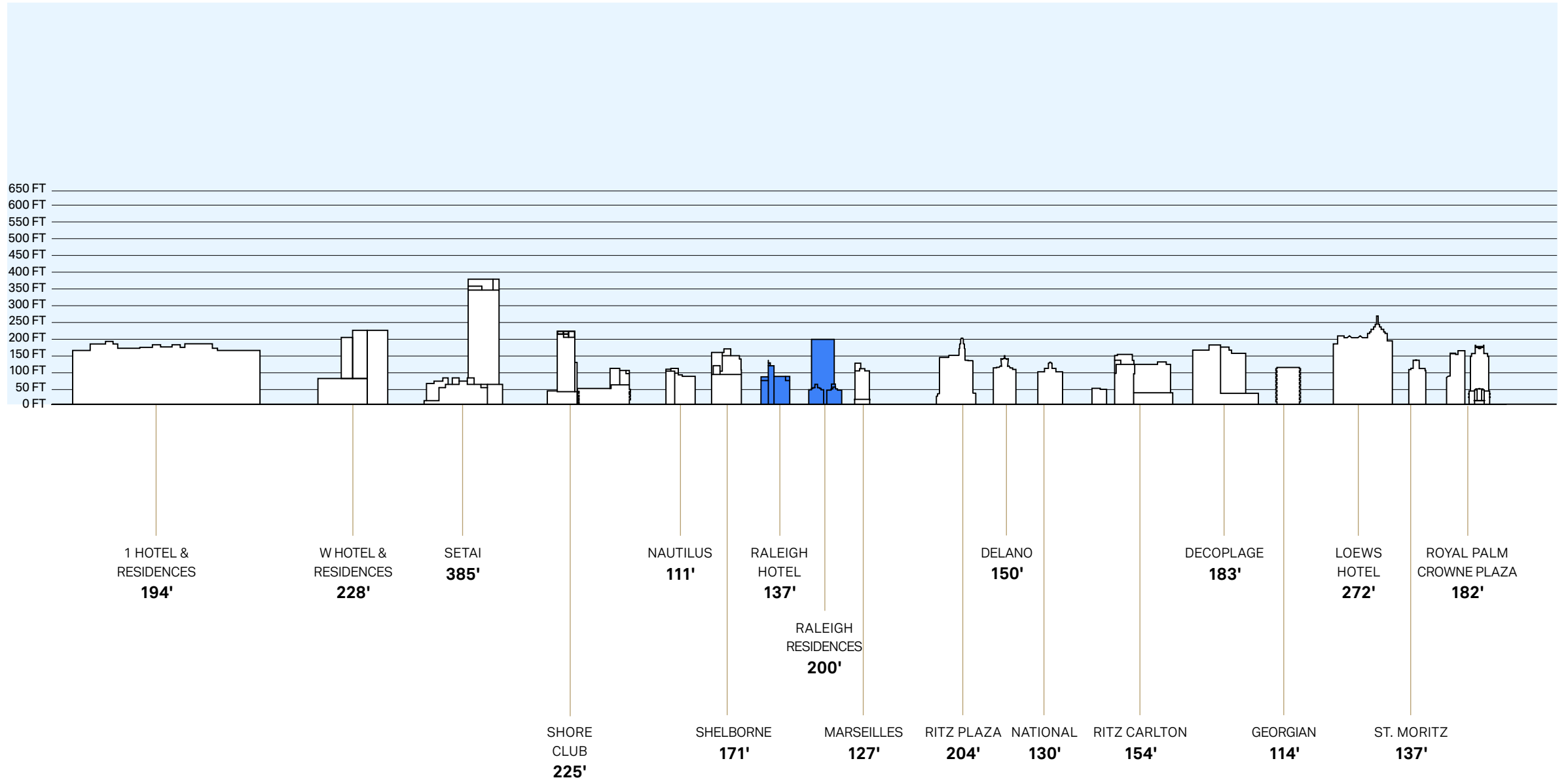


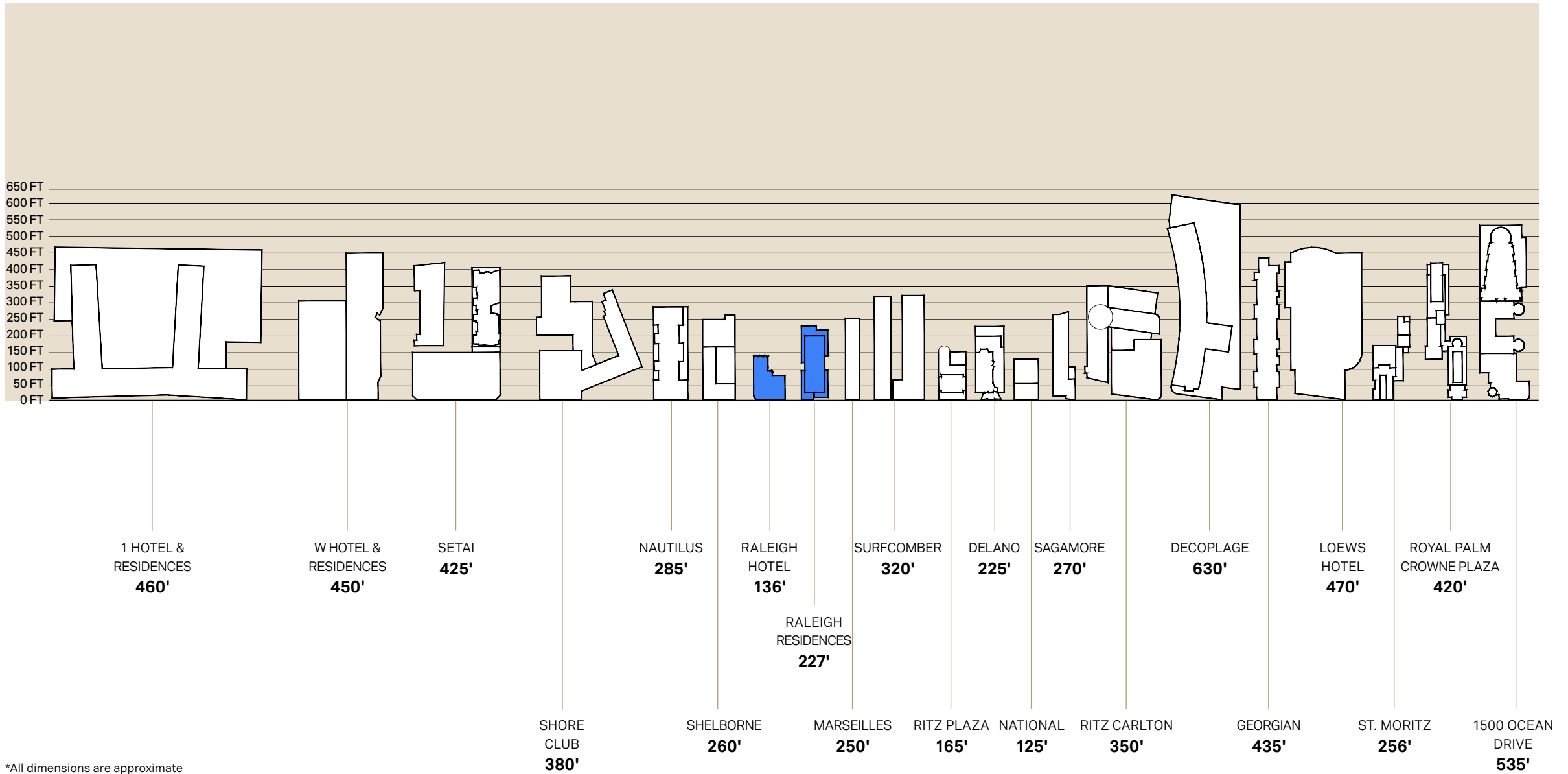
Restored historic facades

CONTEXT

Contextual Height Survey



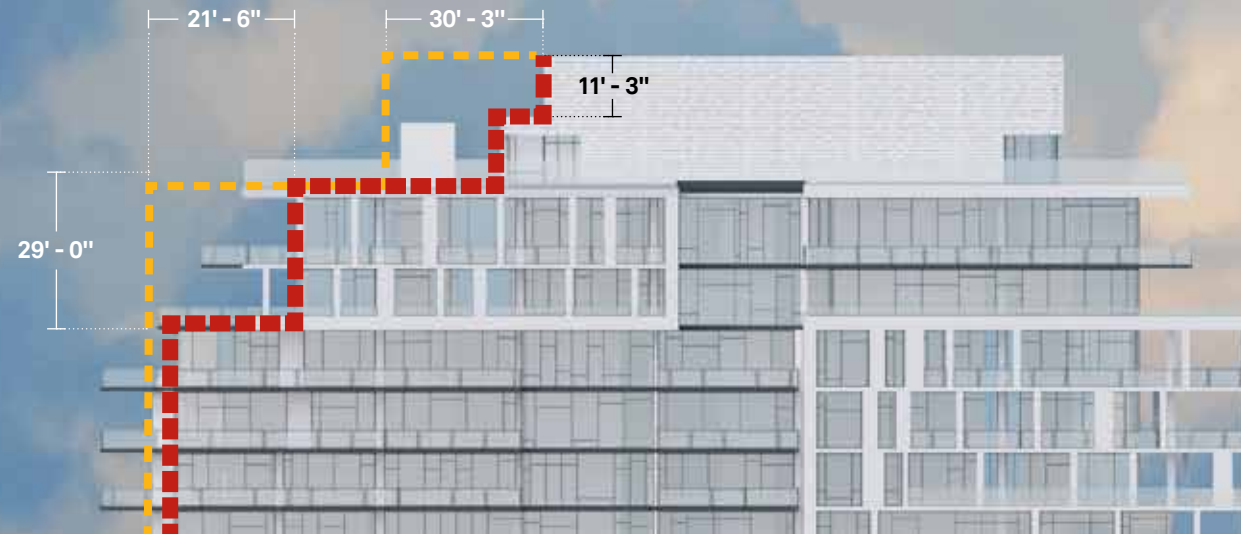




*All dimensions are approximate



Previous massing



North Elevation

Proposed reduced massing



[Animated view \(click image above or click link here\)](#)



Previous massing



Proposed reduced massing

BUILDING



Collins Avenue context



Collins Avenue context



Collins Avenue context



Collins Avenue context

RICHMOND

SOUTH SEAS



Collins Avenue context



Beachfront context



Beachfront context



Beachfront context



Beachfront context



Beachfront context



Boardwalk and 17th Street





Boardwalk and 17th Street





Boardwalk and 21st Street





Boardwalk and 21st Street



Boardwalk and 21st Street



View from Raleigh Hotel





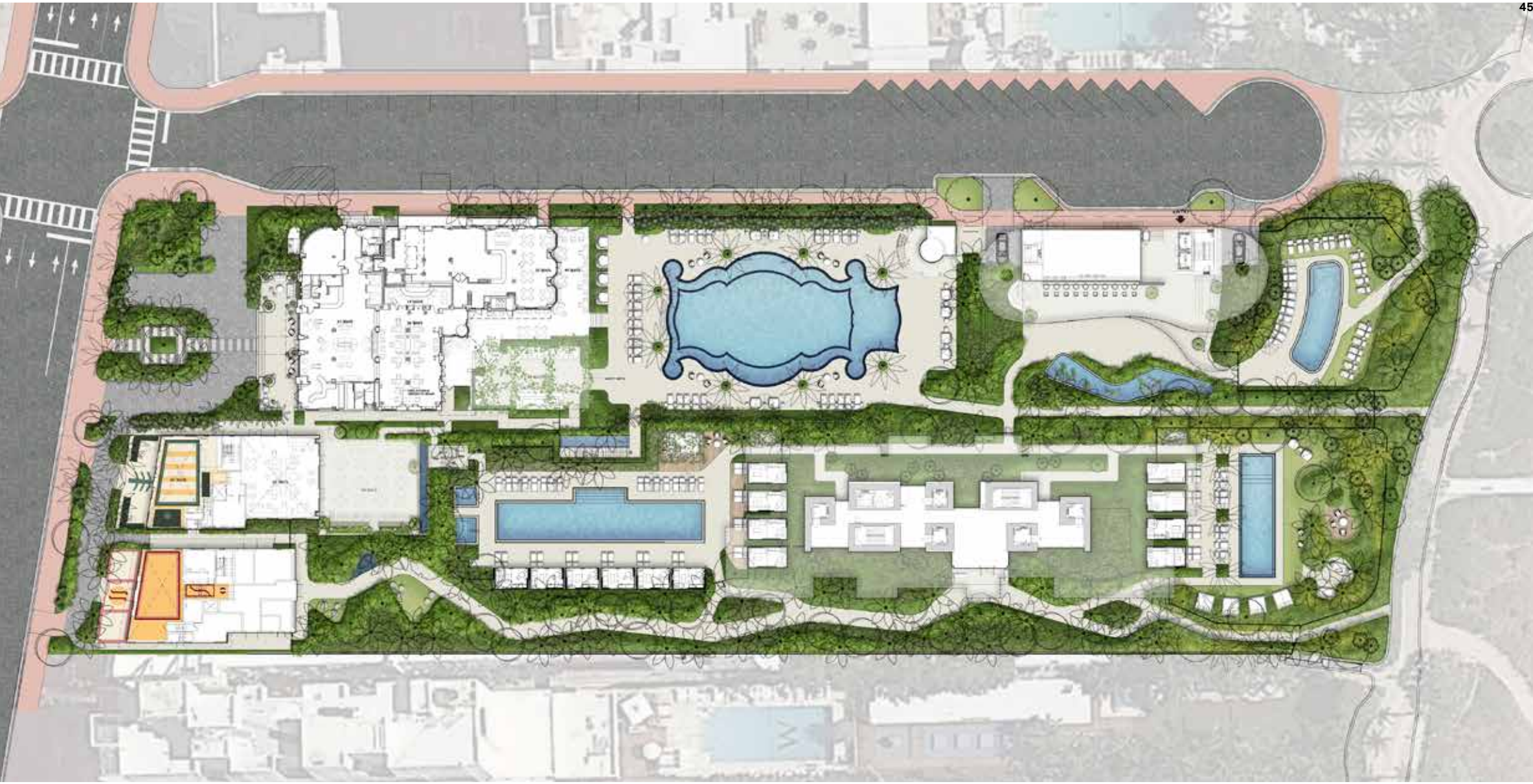
Raleigh Hotel pool



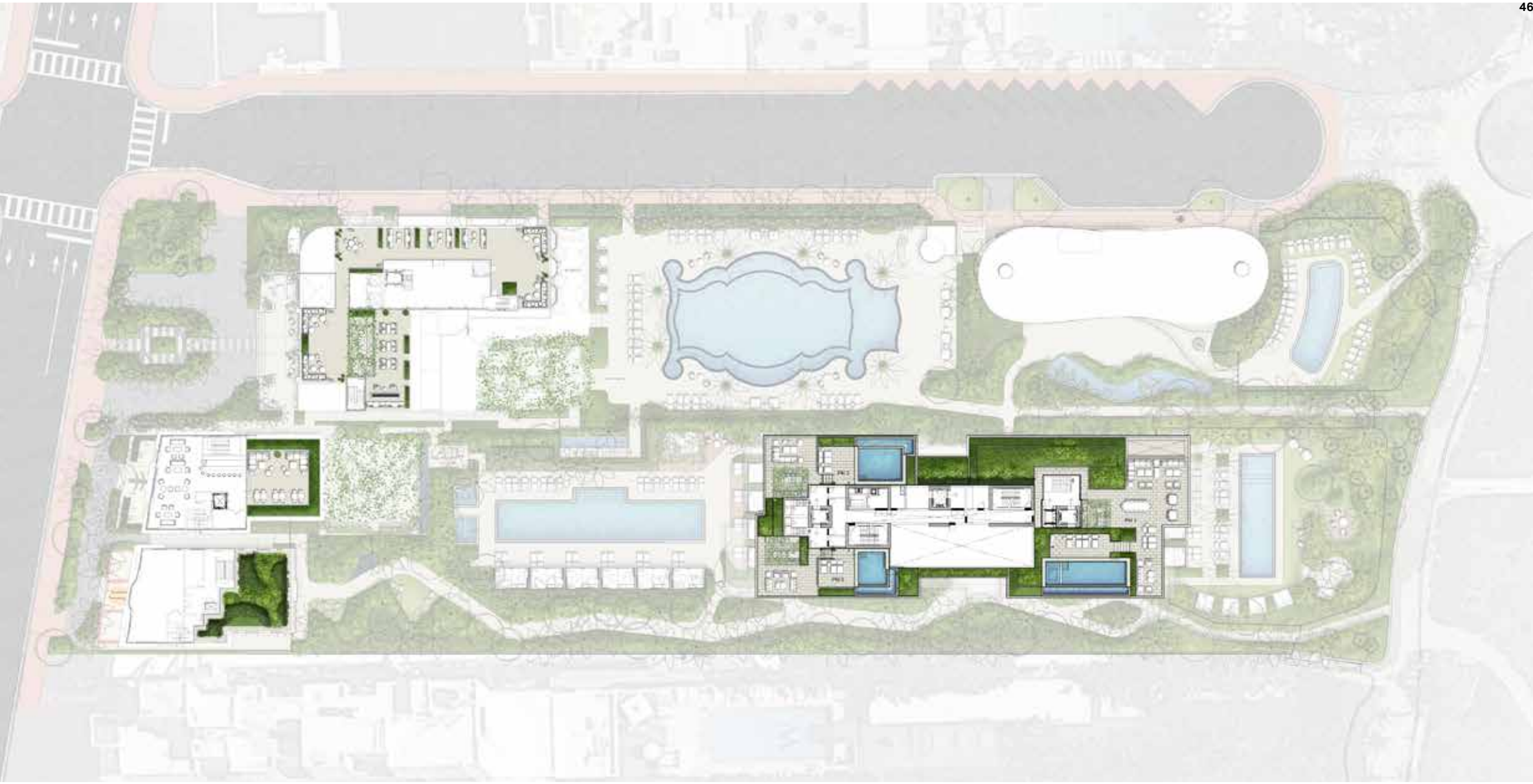
Raleigh Hotel pool



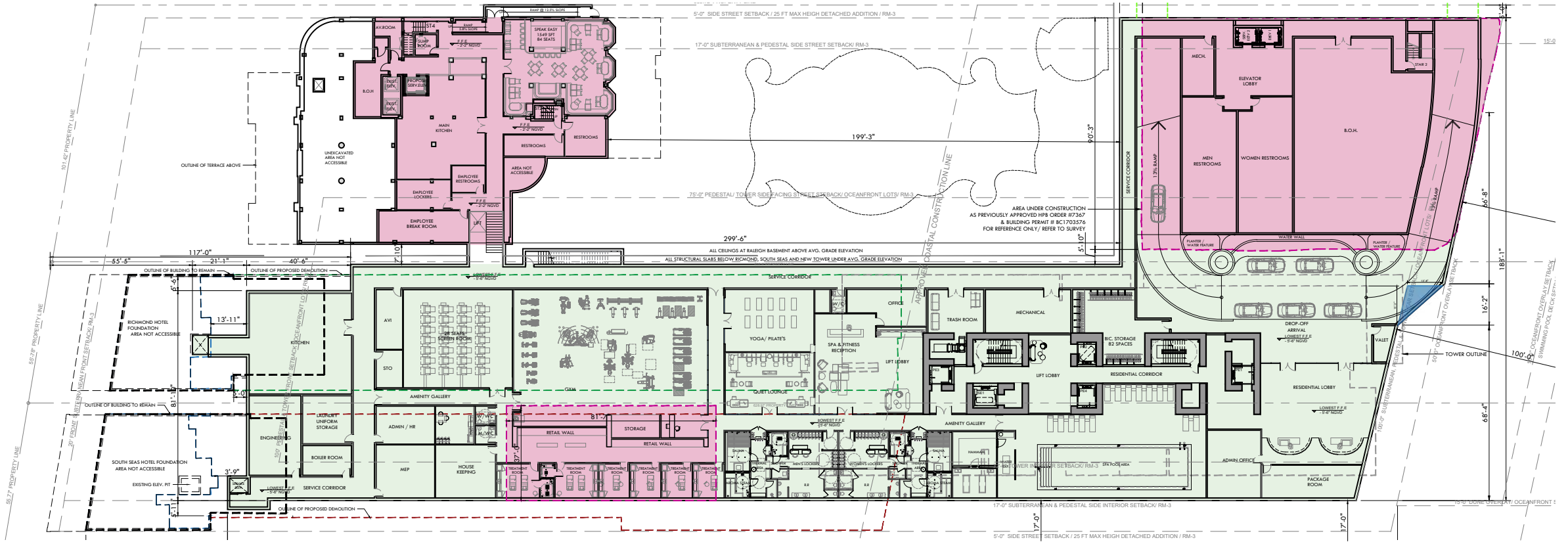
Beach Club pavilion



Raleigh Masterplan



Raleigh Masterplan Roofscape

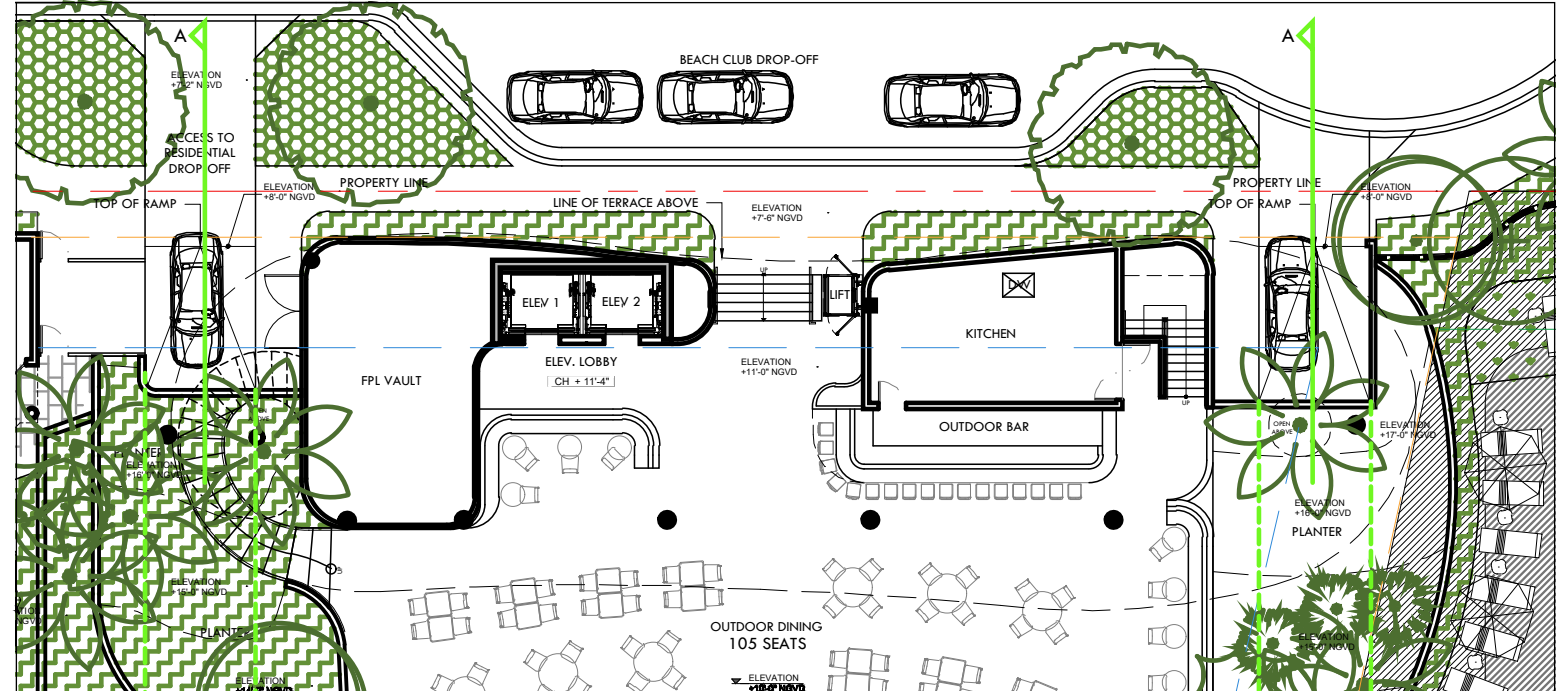
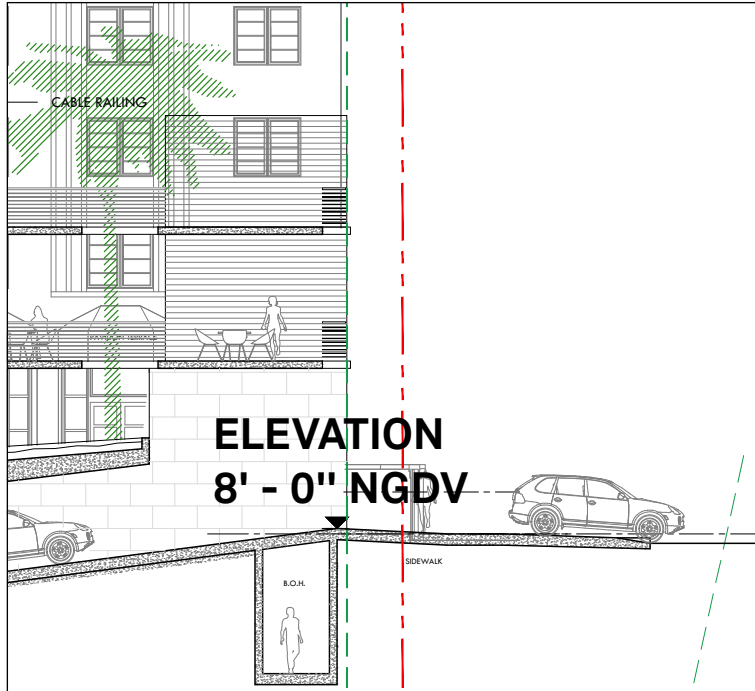


- PREVIOUSLY APPROVED & EXISTING BASEMENT AREA
- PROPOSED BASEMENT AREA

Raleigh Masterplan Resiliency Program

ELEVATION 8' - 0" NGDV

ELEVATION 8' - 0" NGDV



2296

RALEIGH HOTEL
COLLINS AVENUE
MIAMI BEACH, FLORIDA.

