

EXHIBIT C

# EQUIPMENT EVALUATION FORM

Crown Castle

Telecommunications Carrier

Date submitted by Telecommunications Carrier

February 1, 2018

Date returned to Telecommunications Carrier

February 2, 2018

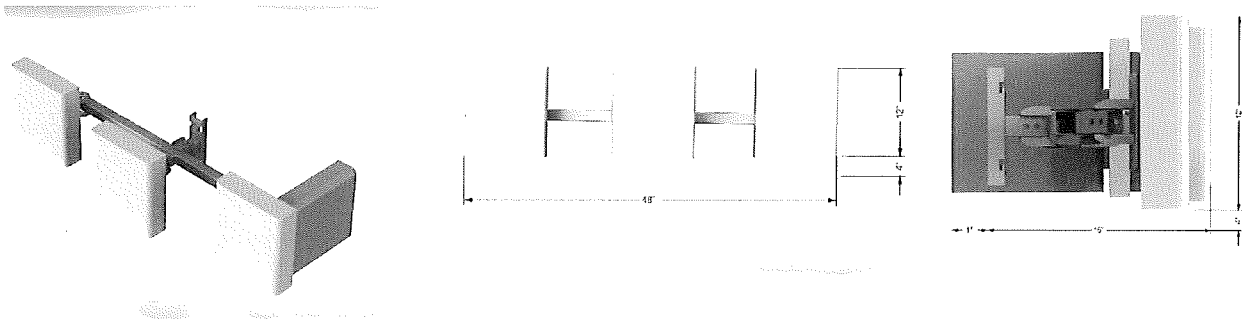
VII. Equipment to be Installed (Working Equipment to be installed and this document must accompany one another for the FPL evaluation)

Brief explanation of equipment to be installed:

3 Micro Wireless Facilities (MWF) will be banded to the pole on steel arm pole mount as pictured below in the communication space to provide low level wireless signal. 1 splitter is added behind 1 of the MWF's.

Maximum Exposed Projected Area for Wind Calculations: 2.62 sq. ft

Pictures of Equipment to be Installed:



Pole Top Attachments: Include copies of all equipment/material certifications that establish this piece of equipment meets FPL's specifications for pole top attachments.

## VIII. FPL's Evaluation

Equipment Approved

Equipment Denied

Reason for denial or additional conditions of attachment:

Usable Pole Space (Includes six inches of clearance above and below the attachment):

Usable Space: 2'

FLORIDA POWER & LIGHT COMPANY

By: David Young DAVID YOUNG

Title: Technical Services Engineer

## IX. GENERAL CONDITIONS

5. Approval under this exhibit by FPL grants the Licensee the right to request permission to attach this identical equipment to FPL Distribution Poles using Exhibit A.
6. Unless FPL specifies otherwise, Licensee is not required to resubmit this equipment for re-approval.
7. All attachments are to be made below the communication worker's safety space on distribution poles only.
8. A copy of this document must be included with each permit (Exhibit A) submitted by the Licensee requesting attachment to FPL distribution poles.

Initial Review Process. Prior to construction or installation of Licensee's Equipment on FPL Distribution Poles, Licensee at its sole cost and expense shall submit to FPL for FPL review a set of design plans and specifications for each Device or piece of equipment that Licensee proposes to install on FPL's Distribution Poles (collectively the "Plans") together with an actual working Device of each type that Licensee proposes to attach to FPL Distribution Poles under this Agreement. Licensee shall complete and submit to FPL with the Plans and Device the form attached hereto as Exhibit "C". Licensee acknowledges and agrees that FPL may test each such Device submitted by Licensee on FPL's Facilities. Within forty-five (45) days of FPL's receipt of the Plans, the Devices, the Exhibit "C" form completed by Licensee, and Licensee's Equipment Evaluation Fee payment, FPL will either:

(i) approve Licensee's Device for attachment providing Licensee with written confirmation of said approval and identifying the Device on the list of approved Equipment attached as Exhibit "C" to this Agreement, (ii) deny Licensee's request to attach the Device or Equipment tested setting forth the reasons for the denial, or (iii) advise Licensee that FPL will conditionally approve Licensee's request for Equipment Attachment provided that Licensee fulfills certain equipment-related requirements. If the Device is approved, FPL will send the Licensee an "approved" Initial Review Evaluation Form in the form of Exhibit C. A copy of the "approved" form is to be included with each Pole Attachment Permit Application the Licensee submits to FPL or FPL's Pole Attachment Permit Application vendor.

For pole top attachments, include copies of all equipment/material certifications with this exhibit that establishes this piece of equipment meets FPL's specifications for pole top attachments.

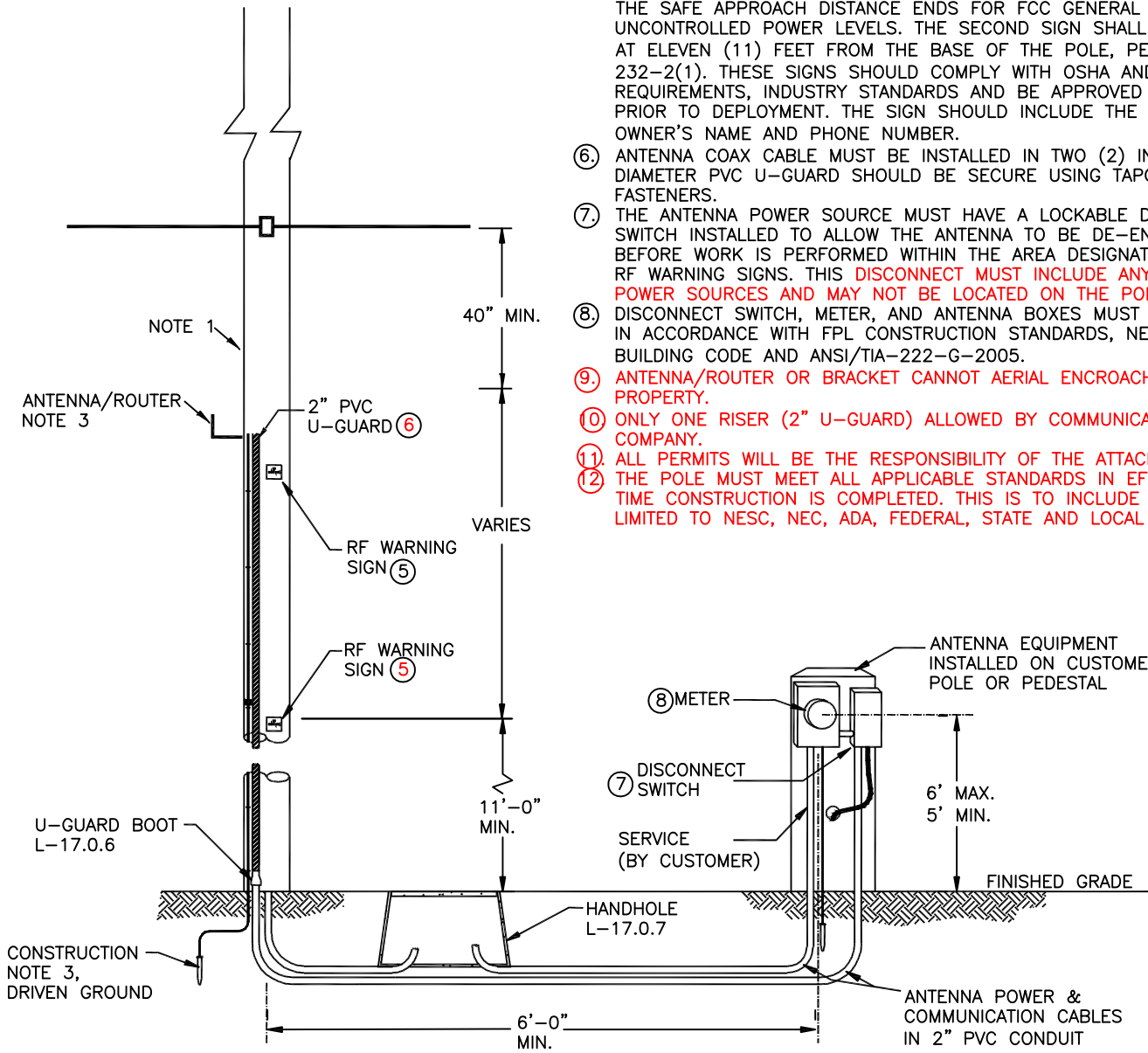
At the conclusion of the Initial Review Process, FPL will provide Licensee and any other person or entity designated by Licensee on Exhibit "C" to receive such notice, with the specific information as to where and when the Devices tested may be retrieved by Licensee. Licensee's Devices that remain on FPL property for more than sixty (60) days after conclusion of the Initial Review Process will be deemed abandoned and may be disposed of by FPL, without liability to Licensee, as it deems appropriate.

Nothing herein guarantees approval of Licensee's Devices for attachment to FPL Distribution Poles or that any permit applied for under this Agreement will be granted. Each permit will be evaluated on its own merits.

Licensee acknowledges and agrees that FPL is not staffed to evaluate Licensee's Devices as a business, and that forty-five (45) days will be required for the evaluation of each Device type arrangement submitted by Licensee (the "**Evaluation Period**"). If the Licensee should submit more than one Device for evaluation, the Evaluation Period for the second Device type will not begin until the evaluation of the first Device is completed. The Evaluation Periods for additional Devices submitted by Licensee for FPL evaluation will follow the same pattern, that is, that the Evaluation Periods for review of these Devices will not run simultaneously, and will not begin until review of a Device then under review by FPL (or prioritized by Licensee) is completed. It is the Licensee's responsibility to prioritize the evaluation of its Devices prior to submitting the Device/Equipment review request to FPL. If at any time, the Licensee's priorities change, Licensees shall notify FPL in writing and FPL will endeavor to accommodate the Licensee's request.

GENERAL NOTES:

- ① THE DESIGN AND MOUNTING REQUIREMENTS OF ALL EQUIPMENT MUST BE APPROVED BY FPL DISTRIBUTION PRODUCT ENGINEERING ON FORM EXHIBIT C..
- ② ALL POLE LOCATIONS MUST BE APPROVED BY FPL PRIOR TO INSTALLATION.
- ③ THE BRACKET ATTACHMENT MUST FIT FLUSH WITH ALL POLE SURFACES AND BE WITHIN COMMUNICATION ZONE.
- ④ ANTENNA ATTACHMENTS MAY ONLY BE MADE ON POLES NOT ALREADY POPULATED BY ANOTHER COMPANY'S ANTENNA.
- ⑤ WHEN REQUIRED, TWO (2) RF WARNING SIGNS MUST BE INSTALLED. A SIGN SHALL BE INSTALLED NEAR THE POLE TOP AT A LEVEL WHERE THE SAFE APPROACH DISTANCE ENDS FOR FCC GENERAL POPULATION / UNCONTROLLED POWER LEVELS. THE SECOND SIGN SHALL BE INSTALLED AT ELEVEN (11) FEET FROM THE BASE OF THE POLE, PER NESC 232-2(1). THESE SIGNS SHOULD COMPLY WITH OSHA AND FCC REQUIREMENTS, INDUSTRY STANDARDS AND BE APPROVED BY FPL PRIOR TO DEPLOYMENT. THE SIGN SHOULD INCLUDE THE ANTENNA OWNER'S NAME AND PHONE NUMBER.
- ⑥ ANTENNA COAX CABLE MUST BE INSTALLED IN TWO (2) INCH MAXIMUM DIAMETER PVC U-GUARD SHOULD BE SECURE USING TAPCON FASTENERS.
- ⑦ THE ANTENNA POWER SOURCE MUST HAVE A LOCKABLE DISCONNECT SWITCH INSTALLED TO ALLOW THE ANTENNA TO BE DE-ENERGIZED BEFORE WORK IS PERFORMED WITHIN THE AREA DESIGNATED BY THE RF WARNING SIGNS. THIS DISCONNECT MUST INCLUDE ANY BACKUP POWER SOURCES AND MAY NOT BE LOCATED ON THE POLE..
- ⑧ DISCONNECT SWITCH, METER, AND ANTENNA BOXES MUST BE INSTALLED IN ACCORDANCE WITH FPL CONSTRUCTION STANDARDS, NESC, FLORIDA BUILDING CODE AND ANSI/TIA-222-G-2005.
- ⑨ ANTENNA/ROUTER OR BRACKET CANNOT AERIAL ENCROACH ON PRIVATE PROPERTY.
- ⑩ ONLY ONE RISER (2" U-GUARD) ALLOWED BY COMMUNICATION COMPANY.
- ⑪ ALL PERMITS WILL BE THE RESPONSIBILITY OF THE ATTACHEE.
- ⑫ THE POLE MUST MEET ALL APPLICABLE STANDARDS IN EFFECT AT THE TIME CONSTRUCTION IS COMPLETED. THIS IS TO INCLUDE BUT, NOT LIMITED TO NESC, NEC, ADA, FEDERAL, STATE AND LOCAL ORDINANCES.



CONSTRUCTION NOTES:

1. DOUBLE STAPLE TO SECURE POLE BOND.
2. DISCONNECT ANTENNA POWER WHEN WORKING WITHIN SAFE APPROACH DISTANCE DEFINED ON RF WARNING SIGNS.
3. DRIVEN GROUND REQUIRED AT EACH ANTENNA POLE.



OH & UG DISTRIBUTION SYSTEM STANDARDS

ORIGINATOR: D. YOUNG

DRAWN BY: E. SCHILLING

DATE: 4/20/15

APPROVED: RICK D. HUFF

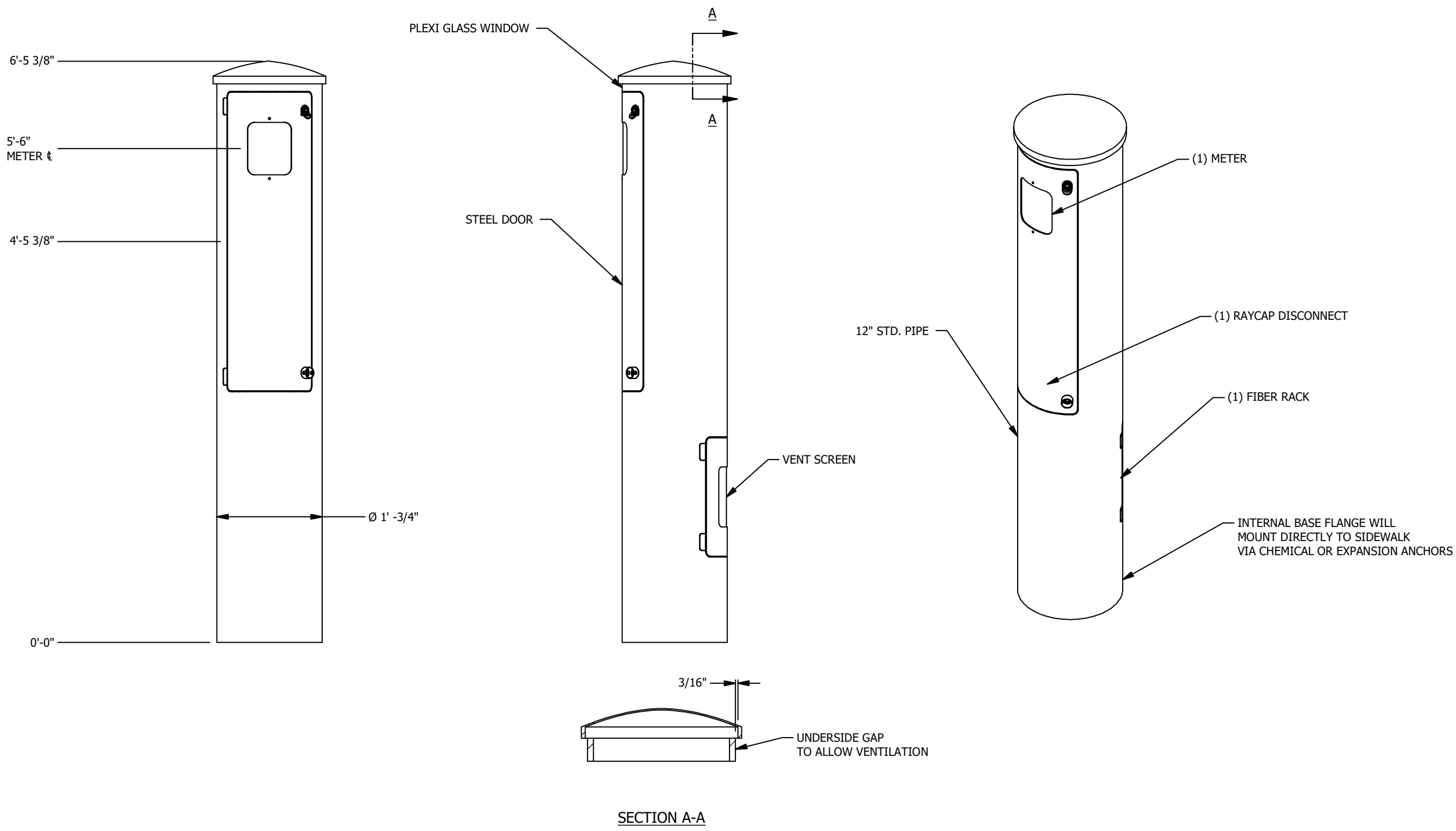
NO SCALE

MANAGER OF ELECTRICAL STANDARDS

NO.	DATE	REVISION	ORIG.	DRAWN	APPR.
1	6/20/16	UPDATE DRAWING AND NOTES	DGY	ELS	RDH

**NOTES:**

DRAWINGS ARE FOR CONCEPTUAL PURPOSES ONLY. SUBJECT TO CHANGE PENDING FINAL ENGINEERING.



7555-A PALMETTO COMMERCE PARKWAY  
 NORTH CHARLESTON, SC 29420 USA  
 P: (800)-755-0689 F: (843)-207-0207  
 WWW.STEALTHCONCEALMENT.COM

PROPRIETARY INFORMATION: THE INFORMATION CONTAINED WITHIN THIS DRAWING SET IS PROPRIETARY & CONFIDENTIAL BY NATURE. ANY USE OR DISCLOSURE OTHER THAN THAT WHICH RELATES TO STEALTH@ CONCEALMENT SOLUTIONS, INC. IS STRICTLY PROHIBITED.

DRAWING NOT TO SCALE. UNLESS SPECIFIED OTHERWISE DIMENSIONS SHOWN ARE IN INCHES

TOLERANCES	
DECIMALS	ANGULAR
X ± 1/16"	X ± 0.5°
.XXX ± 0.01"	

CONCEPT DRAWING

MIAMI POLE PEDESTAL

JOB #: CC19-01997W-05
DRAWN: DB
DESIGNED: DB
REVISED: DB

<b>CS1</b>	REVISION
	<b>B</b>

10-16-19





C241-GR484

Dark Gray Fine Texture Semi-Gloss



C241-GR07

Gray Fine Texture Semi-Gloss



C241-GR305

Bay Gray Fine Texture Semi-Gloss



T243-GR522

Flint Gray Fine Texture Semi-Gloss



T241-GR11

Platinum Gray Fine Texture Semi-Gloss



T031-WH06

Pearl White Fine Texture Semi-Gloss



T243-GR301

Quartz Gray Fine Texture Semi-Gloss



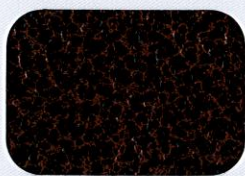
T241-GR142

Light Gray Fine Texture Semi-Gloss



T241-BG137

Beige Fine Texture Semi-Gloss



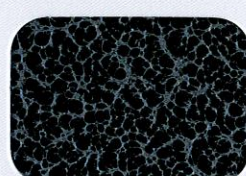
T375-BK07

Copper Vein Semi-Gloss\*



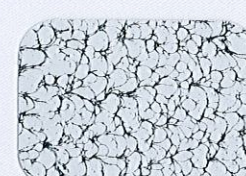
T375-BK10

Gold Vein Semi-Gloss\*



T375-BK26

Silver Vein Semi-Gloss\*



T075-WH34

Black/White Vein Semi-Gloss



T064-BR24

Bronze Hammertone Semi-Gloss



T064-GR660

Gray Hammertone Semi-Gloss



T064-GR05

Silver Hammertone Semi-Gloss



T064-BL95

Blue Hammertone Semi-Gloss



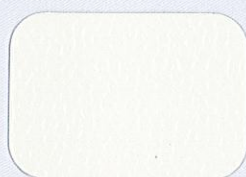
T064-GN81

Green Hammertone Semi-Gloss



C013-GR08

Gray Hammer Semi-Gloss



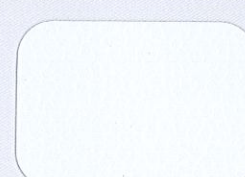
T013-BG38

Beige Hammer Semi-Gloss



T012-WH260

White Hammer Semi-Gloss



T013-WH09

White Hammer Semi-Gloss



T025-BR01

Bronze Pearlescent 50% Gloss



T028-GR02

Steel Gray Pearlescent 80% Gloss



T353-YL02

Brass 30% Gloss\*



T357-GR105

Silver Metallic 70% Gloss\*



T353-GR06

Silver Metallic 30% Gloss\*



T358-GR539

Chrome 80% Gloss\*



T391-BG290

Metallic Bronze Semi-Gloss Texture\*



T091-GR309

Mock Rock Texture Semi-Gloss



C291-GN20

Patina Texture Semi-Gloss



T091-GN57

Verdigris Texture Semi-Gloss



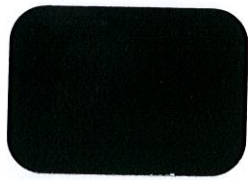
T091-BR47

Rust Texture Semi-Gloss

Computer Colors

Specialty Coatings





**C241-BK303**  
Black Fine Texture Low-Gloss



**C081-BK176**  
Black Wrinkle Semi-Gloss



**E311-BK04**  
Black Hammer Low-Gloss\*\*



**T013-BK62**  
Black Hammer Semi-Gloss



**T032-BR62**  
Brown Fine Texture Semi-Gloss



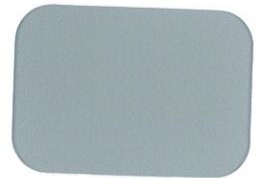
**P004-BR23**  
Bronze 40% Gloss



**P004-GR09**  
ANSI #49 Gray 40% Gloss



**P004-GR16**  
ANSI #61 Gray 40% Gloss



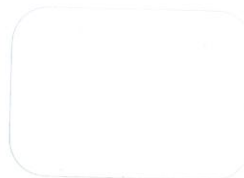
**H305-GR10**  
Light Gunmetal Gray 50% Gloss\*\*



**P003-GR01**  
Gray #26307 30% Gloss



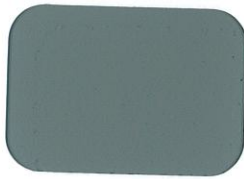
**H303-WH16**  
Antique White 30% Gloss\*\*



**P005-WH01**  
White #27875 50% Gloss



**T002-WH08**  
White 20% Gloss



**T008-GR736**  
Gray ANSI 61 80% Gloss



**P008-GR21**  
RAL 7042 Gray 80% Gloss



**T009-GR230**  
RAL 7035 Gray 90% Gloss



**T009-WH13**  
White 90% Gloss



**P009-WH14**  
White 90% Gloss



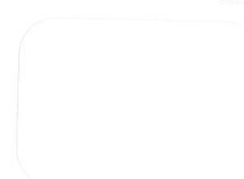
**H309-WH27**  
Frost White 90% Gloss\*\*



**T032-BG03**  
Beige Texture Semi-Gloss



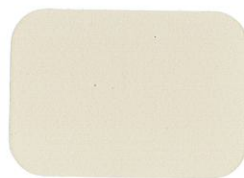
**T032-WH15**  
White Texture Semi-Gloss



**C031-WH120**  
White Texture Semi-Gloss



**T009-BG16**  
Designer Beige 90% Gloss



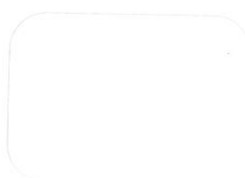
**P009-BG02**  
Beige 90% Gloss



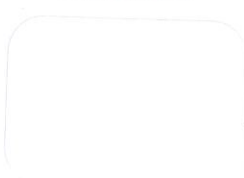
**T009-BG01**  
Almond 90% Gloss



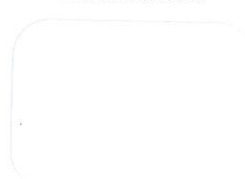
**H308-WH25**  
White 80% Gloss\*\*



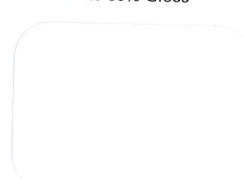
**P009-WH04**  
White 90% Gloss



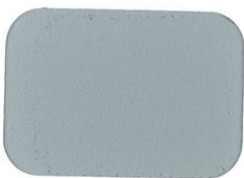
**T009-WH11**  
White 90% Gloss



**T009-WH12**  
Hi-Reflective White 90% Gloss



**T007-WH121**  
White 70% Gloss



**E305-GR533**  
Gray Primer 50% Gloss\*\*



**E305-WH243**  
White Primer 50% Gloss\*\*



**H304-GR312**  
Anti-Gassing Primer 40% Gloss\*\*



**E396-GR1372**  
Zinc Rich Primer

If a clear topcoat finish is preferred  
T209-CL01 90% Gloss Clear TGIC Polyester  
T002-CL02 20% Gloss Clear TGIC Polyester

The samples on this card are representative only and vary slightly from actual gloss, color and texture.