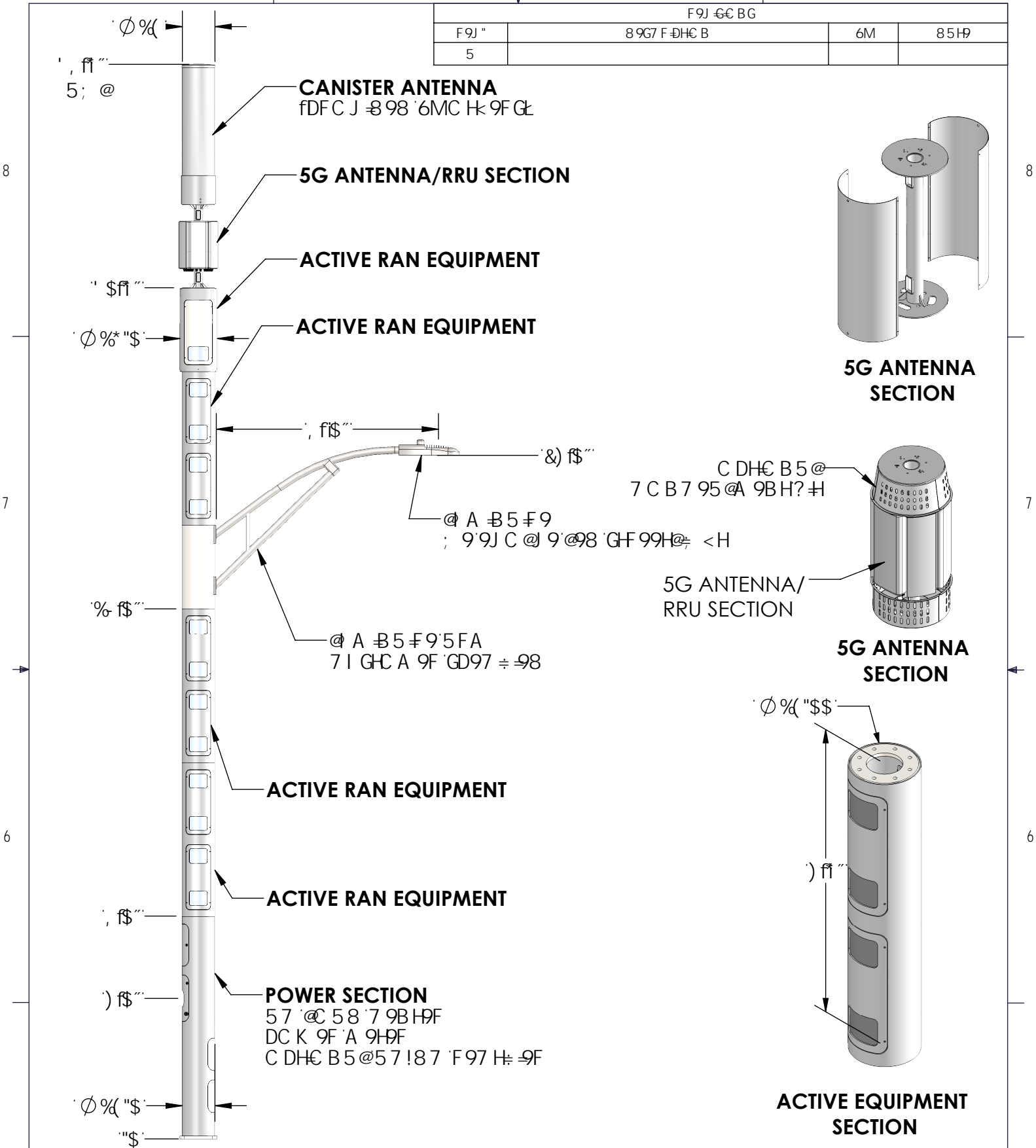


F9J GCBG			
F9J "	89G7 F DHC B	6M	85H9
5			



<p>These drawings and specifications are the proprietary property of CommScope Inc. and may be used only for the specific purpose authorized in writing by CommScope Inc.</p> <p>5 @ 8 A 9 B G C B G 5 F 9 B B 7 < 9 G 1 C G HC @ F 5 B 7 9 G 1 B @ G C H 9 F K 6 9 D 9 7 9 8.</p> <p>L 1 - "%& 5 B ; @ G - 8 S LL 1 - "\$* : F 5 7 H C B G - % # & LLL 1 - "\$ %</p> <p>F 9 A C J 9 6 I F F G 5 B 8 6 F 9 5 ? 9 8 : 9 G * \$ \$)</p> <p>8 C B C H G 7 5 @ H K G D F B H</p>	<p>BFSK B 0M</p> <p>A > D</p>	<p>G-99H</p>	<p>DSFHBI A 0F.</p>	
	<p>7 < 9 7 9 8 0 M</p>	<p>G 7 S 9 R</p>	<p>8 9 G 7 F D H C B.</p>	
	<p>8 5 H R</p>	<p>A S H F 5 E</p>	<p>BFSK B : H 8 R</p>	
	<p>F 9 J G C B.</p> <p>5</p>	<p>: B G.</p>		
		<p>K 9 : < H</p>		

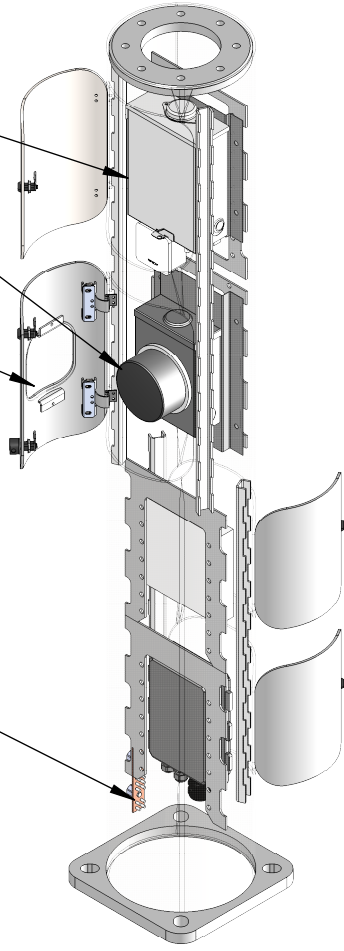
8

57 @ 58 7 9B H9F

DC K 9F A 9H9F

HF 5 BGD5 F 9B HK B 8 C K

; FC I B 8 65F

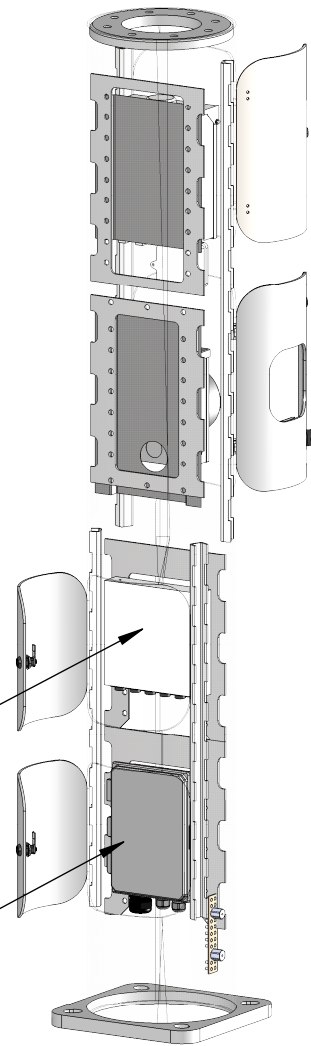


7

6

: 69F I B H

: 69F A 5 B 5; 9A 9B H I B H



5

These drawings and specifications are the proprietary property of CommScope Inc. and may be used only for the specific purpose authorized in writing by CommScope Inc.

5 @ 8 A 9B G C B G 5 F 9 B B 7 < 9 G 1 C G
 H C @ F 5 B 7 9 G 1 B @ 9 G C H K 9 F K @ 9 C D 9 7 ≠ 9 8.
 "L 1" - "%& 5 B; @ 9 G - 8 5
 "LL 1" - "S* : F 5 7 H C B G - % # &
 "LLL 1" - "S" %

F 9 A C J 9 6 I F F G 5 B 8 6 F 9 5 ? 9 8; 9 G * S S

8 C B C H G 7 5 @ 9 H K G D F B H

B F 5 K B 6 M

G 9 9 H

D 6 F H B I A 6 F

A > D

7 < 9 7 7 9 8 6 M

G 7 5 H R

8 9 G F E H C B

B 5 H R

A S H F 8 B

B F 5 K B : H E R

F 9 J @ C B

: B G

5

K 9 a < H

8

7

6

5



C241-GR484

Dark Gray Fine Texture Semi-Gloss



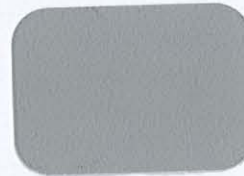
C241-GR07

Gray Fine Texture Semi-Gloss



C241-GR305

Bay Gray Fine Texture Semi-Gloss



T243-GR522

Flint Gray Fine Texture Semi-Gloss



T241-GR11

Platinum Gray Fine Texture Semi-Gloss



T031-WH06

Pearl White Fine Texture Semi-Gloss



T243-GR301

Quartz Gray Fine Texture Semi-Gloss



T241-GR142

Light Gray Fine Texture Semi-Gloss



T241-BG137

Beige Fine Texture Semi-Gloss



T375-BK07

Copper Vein Semi-Gloss*



T375-BK10

Gold Vein Semi-Gloss*



T375-BK26

Silver Vein Semi-Gloss*



T075-WH34

Black/White Vein Semi-Gloss



T064-BR24

Bronze Hammertone Semi-Gloss



T064-GR660

Gray Hammertone Semi-Gloss



T064-GR05

Silver Hammertone Semi-Gloss



T064-BL95

Blue Hammertone Semi-Gloss



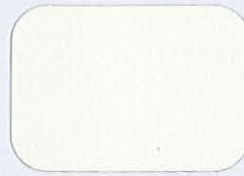
T064-GN81

Green Hammertone Semi-Gloss



C013-GR08

Gray Hammer Semi-Gloss



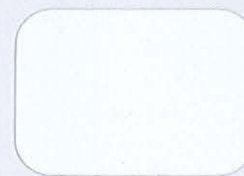
T013-BG38

Beige Hammer Semi-Gloss



T012-WH260

White Hammer Semi-Gloss



T013-WH09

White Hammer Semi-Gloss



T025-BR01

Bronze Pearlescent 50% Gloss



T028-GR02

Steel Gray Pearlescent 80% Gloss



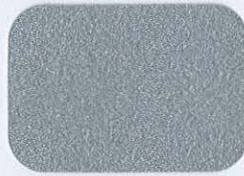
T353-YL02

Brass 30% Gloss*



T357-GR105

Silver Metallic 70% Gloss*



T353-GR06

Silver Metallic 30% Gloss*



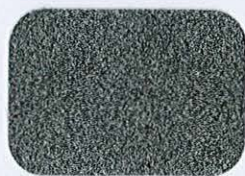
T358-GR539

Chrome 80% Gloss*



T391-BG290

Metallic Bronze Semi-Gloss Texture*



T091-GR309

Mock Rock Texture Semi-Gloss



C291-GN20

Patina Texture Semi-Gloss



T091-GN57

Verdigris Texture Semi-Gloss



T091-BR47

Rust Texture Semi-Gloss

Computer Colors

Specialty Coatings



C241-BK303
Black Fine Texture Low-Gloss



C081-BK176
Black Wrinkle Semi-Gloss



E311-BK04
Black Hammer Low-Gloss**



T013-BK62
Black Hammer Semi-Gloss



T032-BR62
Brown Fine Texture Semi-Gloss



P004-BR23
Bronze 40% Gloss



P004-GR09
ANSI #49 Gray 40% Gloss



P004-GR16
ANSI #61 Gray 40% Gloss



H305-GR10
Light Gunmetal Gray 50% Gloss**



P003-GR01
Gray #26307 30% Gloss



H303-WH16
Antique White 30% Gloss**



P005-WH01
White #27875 50% Gloss



T002-WH08
White 20% Gloss



T008-GR736
Gray ANSI 61 80% Gloss



P008-GR21
RAL 7042 Gray 80% Gloss



T009-GR230
RAL 7035 Gray 90% Gloss



T009-WH13
White 90% Gloss



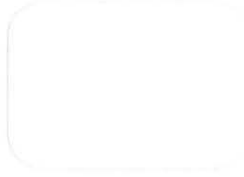
P009-WH14
White 90% Gloss



H309-WH27
Frost White 90% Gloss**



T032-BG03
Beige Texture Semi-Gloss



T032-WH15
White Texture Semi-Gloss



C031-WH120
White Texture Semi-Gloss



T009-BG16
Designer Beige 90% Gloss



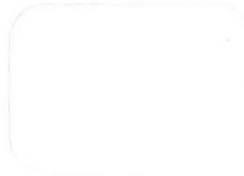
P009-BG02
Beige 90% Gloss



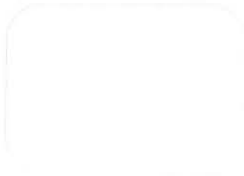
T009-BG01
Almond 90% Gloss



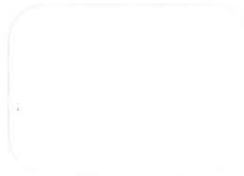
H308-WH25
White 80% Gloss**



P009-WH04
White 90% Gloss



T009-WH11
White 90% Gloss



T009-WH12
Hi-Reflective White 90% Gloss



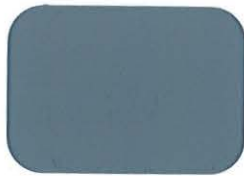
T007-WH121
White 70% Gloss



E305-GR533
Gray Primer 50% Gloss**



E305-WH243
White Primer 50% Gloss**



H304-GR312
Anti-Gassing Primer 40% Gloss**



E396-GR1372
Zinc Rich Primer

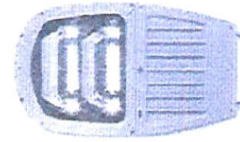
If a clear topcoat finish is preferred
T209-CL01 90% Gloss Clear TGIC Polyester
T002-CL02 20% Gloss Clear TGIC Polyester

The samples on this card are representative only and vary slightly from actual gloss, color and texture.

GE
(General Electric)

Ordering Number Logic
Scalable Specification Grade Cobrahead (ERS2)

LED Cobra
Head
Lights



ERS2

(SPEC'S)

PROD. ID	VOLTAGE	OPTICAL CODE	PHOTOMETRIC TYPE	DRIVE CURRENT	LED COLOR TEMP	PE FUNCTION	COLOR	OPTIONS
E = Evolve	0 = 120-277	Product Tier	A1 = Extra Narrow Asymmetric	5 = 525mA	40 = 4000K	1 = None	BLCK = Black	B = Internal Bubble level
R = Roadway	1 = 120	*3 = Specification Grade	B1 = Narrow Asymmetric (Medium)	7 = 700mA	50 = 5000K	2 = PE Rec	GRAY = Gray	D = Dimming*
S = Scalable	2 = 208	See Charts for all levels	C1 = Asymmetric (Short)	1 = 1050mA	NOTE: For 1050mA drive current, nominal color temperature (CCT) = 5300K	4 = PE Rec with Shorting Cap		F = Fusing
2 = Double Module Optical Assembly	3 = 240		D1 = Asymmetric Forward			5 = PE Rec with Control		G = External Bubble Level
	4 = 277		E1 = Asymmetric (Medium)			7 = GE Dimming 5-Pin PE Receptacle **		L = Tool-Less Entry
	H = 347-480					9 = GE Dimming 5-Pin PE Receptacle with Shorting Cap **		R = Additional Secondary Surge Protection Device
	D = 347							T = GE Energy Extreme Surge Protection per IEEE/ANSI C82.41.2-2002
	5 = 480							- Rating 1 - 10kV/5kA Location Category (120 events)
								- Rating 2 - 6kV/3kA Location Category C-Low (5000 events)
								XXX = Special Options
								* When ordering Dimming PE Receptacle 7, 9 or A, 2=Dimming driver must be selected under "OPTIONS" column
								NOTE: If no dimming receptacle under PE Function is selected and D=Dimming is selected under OPTIONS, 0-10v dimming leads will be provided with access through splitter opening in unit

525 mA		PHOTO-METRIC TYPE	DRIVE CURRENT	TYPICAL SYSTEM WATTAGE			TYPICAL INITIAL LUMENS			TYPICAL INITIAL LPM		IES FILE NUMBERS	
PRODUCT ID	OPTICAL CODE			120-277V	4000K	5000K	B RATING	U RATING	G RATING	4000K	5000K	4000K	5000K
ERS2	D3	A1	525mA	88	8000	8000	2	0	2	91	91	456404	456429
ERS2	E3		525mA	99	9100	9100	3	0	2	92	92	456405	456430
ERS2	F3		525mA	112	10300	10300	3	0	2	92	92	456406	456431
ERS2	G3		525mA	125	11500	11500	3	0	2	92	92	456407	456432
ERS2	H3		525mA	138	12700	12700	3	0	3	92	92	456408	456433
ERS2	D3	B1	525mA	88	8200	8200	2	0	1	93	93	456409	456434
ERS2	E3		525mA	99	9300	9300	2	0	1	94	94	456410	456435
ERS2	F3		525mA	112	10600	10600	3	0	2	95	95	456411	456436
ERS2	G3		525mA	125	11800	11800	3	0	2	94	94	456412	456437
ERS2	H3		525mA	138	13000	13000	3	0	2	94	94	456413	456438
ERS2	D3	C1	525mA	88	8200	8200	2	0	1	93	93	456414	456439
ERS2	E3		525mA	99	9300	9300	2	0	1	94	94	456415	456440
ERS2	F3		525mA	112	10600	10600	3	0	1	95	95	456416	456441
ERS2	G3		525mA	125	11800	11800	3	0	2	94	94	456417	456442
ERS2	H3		525mA	138	13000	13000	3	0	2	94	94	456418	456443
ERS2	D3	D1	525mA	88	8000	8000	2	0	1	91	91	456419	456444
ERS2	E3		525mA	99	9100	9100	2	0	2	92	92	456420	456445
ERS2	F3		525mA	112	10300	10300	2	0	2	92	92	456421	456446
ERS2	G3		525mA	125	11500	11500	2	0	2	92	92	456422	456447
ERS2	H3		525mA	138	12700	12700	3	0	2	92	92	456423	456448
ERS2	D3	E1	525mA	88	8200	8200	2	0	3	93	93	456424	456449
ERS2	E3		525mA	99	9300	9300	2	0	2	94	94	456425	456450
ERS2	F3		525mA	112	10600	10600	3	0	2	95	95	456426	456451
ERS2	G3		525mA	125	11800	11800	3	0	2	94	94	456427	456452
ERS2	H3		525mA	138	13000	13000	3	0	2	94	94	456428	456453

- NOTES:
- Max Operating Ambient 50° C
 - 347-480V Not Available
 - For T Option Availability Contact Manufacturer

Lumen Maintenance

- Projected L92 (10K) ≥ 50,000 at Ta 25C
 - Projected L70 (10K) > 100,000 at Ta 25C
- Based on 10,000h LM-80 data for Nichia 219B SQETMLH17005

