

DRB Plan Review - Fail Fernanda Sotelo Ph: email: FernandaSotelo@miamibeachfl.gov

Comments: JGM, FSC Comments#

4. ZONING COMMENTS

a. Where is parking lot lightings? Height of poles?

Parking lot lightings are shown on sheet. The poles are in height.

Please refer to sheet number C1 for our light pole exhibit. This exhibit reflects the light pole locations and also the 13' mounting height of the poles. Additionally, landscape uplights are shown on sheet L4.

5. DESIGN COMMENTS

b. How does the proposal address the Urban Heat Island Ordinance re/ repurposed parking area and drive carpool lane.

The landscape plans have preserved mature canopy trees and palms on-site in place or through relocations on-site. Additionally, the landscape plan provides a fully layered planting approach of canopy, understory, and groundcover layers, which will maximize the impact of the green areas on-site and contribute to reducing the urban heat island effect.

General

Add "FINAL SUBMITTAL" to front cover title for heightened clarity of reference for next deadline. Also drawings need to be dated

The words "FINAL SUBMITTAL" have been added to the front cover title and the drawings have been dated.

Urban Forestry Group Review - Fail Omar Leon Ph: email: OmarLeon@miamibeachfl.gov

Comments:

The following still needs to be submitted for review:

Tree evaluation report conducted by a Certified Arborist or registered Consulting Arborist

Tree evaluation report has been prepared by a Certified Arborist and the landscape tree disposition / preservation plan and the landscape plan have been coordinated with the recommendations noted by the arborist.

Tree preservation plans

Tree disposition / preservation plan has been provided and coordinated with the recommendations noted by the arborist. All trees to remain are indicated on this plan.

The Specimen trees on property shall be preserved if identified to be in good condition by the certified arborist.

Specimen trees on the property identified to be in good condition by the certified arborist have been preserved on the property, with the exception of tree #44 which has a codominant branch/trunks and will become structurally weak as it grows according to the arborist report.

Planning Landscape Review - Pass Enrique Nunez Ph: email:

EnriqueNunez@miamibeachfl.gov

Recommendation(s)

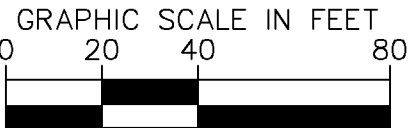
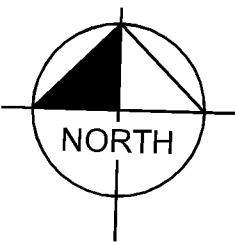
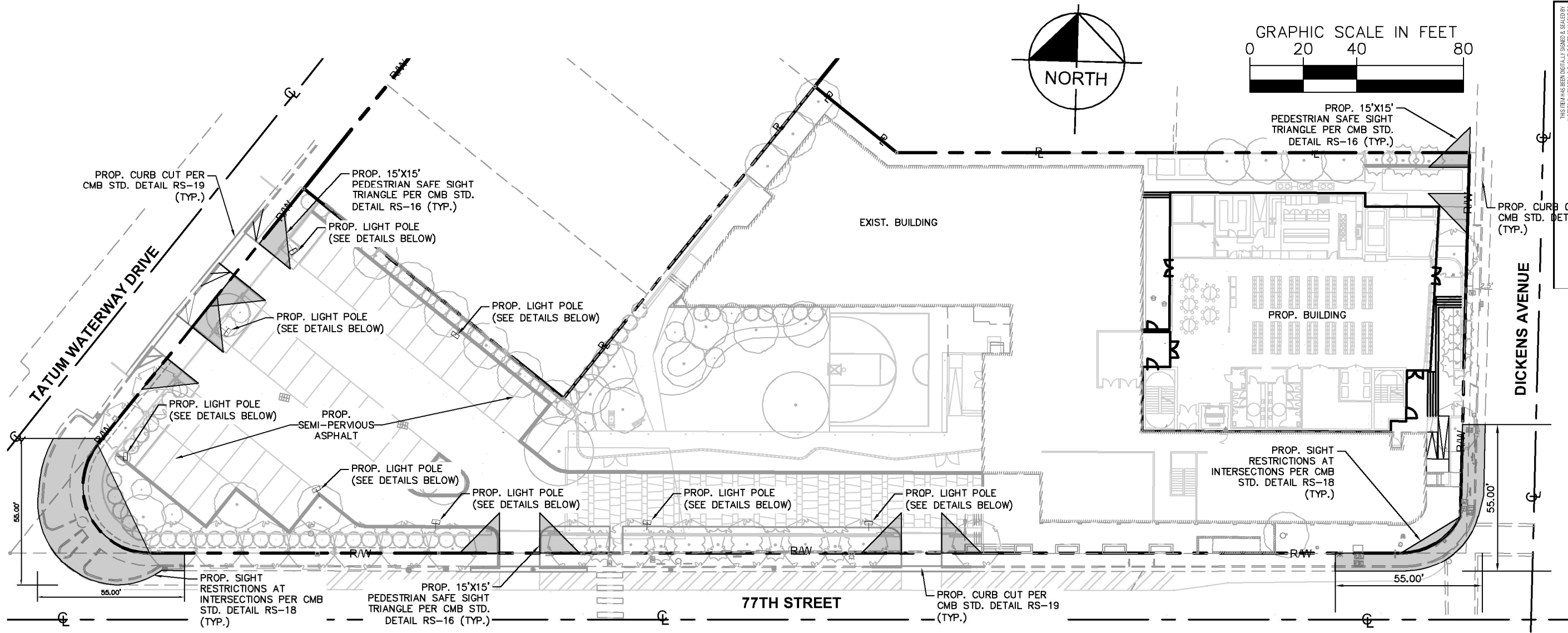
1. Tree Protection fence for existing trees and palms to remain shall consist of a 4' chain link fence with metal posts as per CMB Code Chapter 46. Please graphically show the location of fence to the dripline on the Tree Disposition Plan.


Tree Protection fence detail consistent with CMB Code Chapter 46 for existing trees and palms has been added to sheet L2A Tree Protection Fence Detail. The location of the fence has been graphically shown to the dripline on the Tree Preservation / Disposition Plan, unless it is acceptable to be smaller per the arborist report. Some of the larger trees have 30'+ canopies but are listed with a 12'-18' TPZ/CRZ per the arborist report.

2. For permit plans, replace tree protection fence detail with approved CMB detail described in comment #1. Plastic mesh fencing is prohibited.

Noted. Tree Protection fence detail consistent with CMB Code Chapter 46 for existing trees and palms has been added to sheet L2A.

This document, together with the concepts and designs presented herein, is intended only for the specific purpose and client for which it was prepared. Review of and improper reliance on this document without written authorization and adaptation by Kimley-Horn and Associates, Inc. shall be without liability to Kimley-Horn and Associates, Inc.





5

Style

Single or Double Bracket
Tenon Mounted
for Galleon

Color

Black
Gray
Bronze


PROP. LIGHTING BRACKET

Standard
Concrete

1

Tenon Mount
20' (13' MH)

PROP. CONCRETE POLE

Manufacturer	Style	Fixture	Pole Options	Bracket Options	Light Pattern	Line Watts/ NEMA Label	Color Temp	Lumens	Glare Rating (BUG)	Jes File	Rating Tier
			1"	5	4	113/110	4000K	12,336	B2-U0-G3	GAP-AF-02-LED-U-T4Wies	G3

PROP. AREA LIGHTING

NOTES:

- EXISTING LIGHTING TO BE REMOVED ON-SITE
- PROPOSED LED LIGHTING PER FPL APPROVED CATALOG DATED 04/02/2020

19172

LEHRMAN COMMUNITY DAY SCHOOL
727 Lehman Drive / 77th St | Miami Beach, Florida 33141

PHOTOMETRICS PLAN


C1

05-11-20

FINAL DRB SUBMISSION

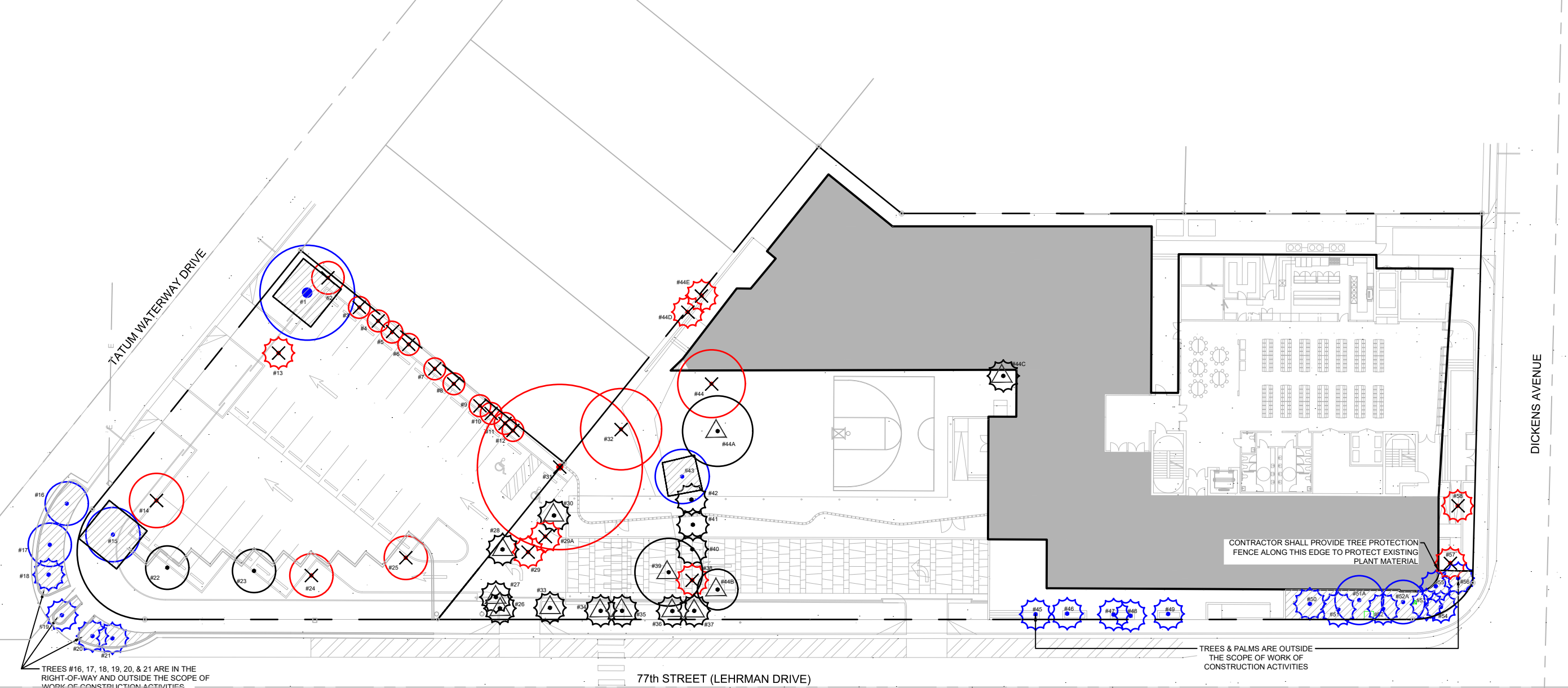
355 ALHAMBRA CIRCLE, SUITE 1400
CORAL GABLES, FL 33134
PHONE: 305-673-2025
WWW.KIMLEY-HORN.COM | REGISTRY 696

111 EAST FLAGLER ST #205
MIAMI, FL 33131
T 305.377.0082
E info@nc-office.com



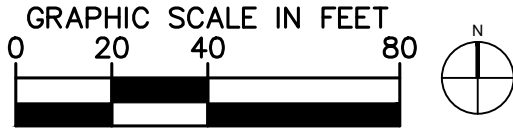
NC-office
architecture / urbanism

This document, together with the concepts and designs presented herein, as an instrument of service, is intended only for the specific purpose and client for which it was prepared. Reuse of and improper reliance on this document without written authorization and adaptation by Kimley-Horn and Associates, Inc. shall be without liability to Kimley-Horn and Associates, Inc.



TREE DISPOSITION GRAPHIC LEGEND

SYMBOL	DESCRIPTION	SYMBOL	DESCRIPTION
	TREE TO BE REMOVED		PALM TO BE REMOVED
	TREE TO BE RELOCATED		PALM TO BE RELOCATED
	TREE TO BE REMAIN		PALM TO BE REMAIN
			TREE PROTECTION FENCE & ZONE REFER TO APPENDIX A IN ARBORIST REPORT FOR PROVIDED TPZ (TREE PROTECTION ZONE)



355 ALHAMBRA CIRCLE, SUITE 1400
CORAL GABLES, FL 33134
PHONE:305-673-2025
WWW.KIMLEY-HORN.COM REGISTRY 696

NC-office
architecture / urbanism

111 EAST FLAGLER ST #205
MIAMI, FL 33131
T 305.377.0082
E info@nc-office.com

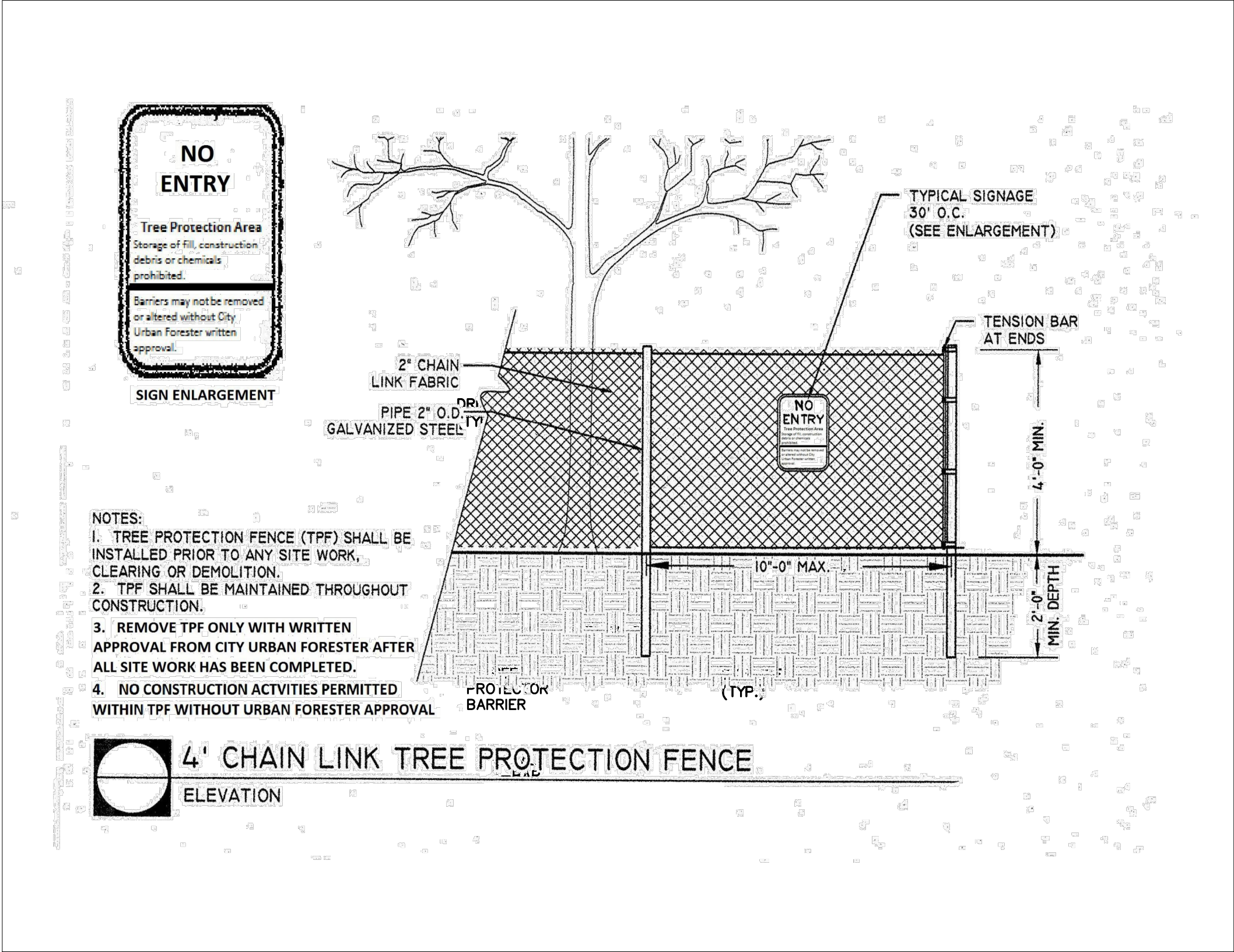
DRB FINAL SUBMISSION

TREE DISPOSITION & PROTECTION PLAN

19172

LEHRMAN COMMUNITY DAY SCHOOL
727 Lehrman Drive / 77th Street | Miami Beach, Florida 33141




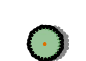



THIS ITEM HAS BEEN DIGITALLY SIGNED & SEALED BY
MATTHEW VINCENT WISNIEWSKI ON THE DATE
05/08/2020 AT 02:37:10 PM. ANY
DUPLICATION OR REPRODUCTION OF THIS
DOCUMENT WITHOUT THE SIGNATURE MUST BE VERIFIED ON ANY
ELECTRONIC COPY



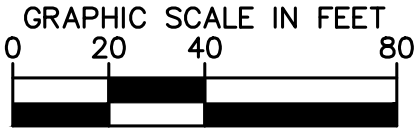
This document, together with the concepts and designs presented herein, as an instrument of service, is intended only for the specific purpose and client for which it was prepared. Reuse of and improper reliance on this document without written authorization and adaptation by Kimley-Horn and Associates, Inc. shall be without liability to Kimley-Horn and Associates, Inc.




CONCEPT PLANT SCHEDULE

	STREET TREE 16' HT / 4" DBH / 4" CT BURSERA SIMARUBA / GUMBO LIMBO CHRYSOPHYLLUM ARGENTEUM / WILD KAMIT QUERCUS VIRGINIANA / SOUTHERN LIVE OAK	18
	ON-SITE TREE 16' HT / MIN. 8" SPD / 4" DBH BURSERA SIMARUBA / GUMBO LIMBO CHRYSOPHYLLUM OLIVIFORME / SATINLEAF PIMENTA DIOICA / ALLSPICE TREE SIMAROUBA GLAUCA / PARADISE TREE	23
	ON-SITE TREE (NATIVE) 12' HT / 2" CAL COCOLOBIA DIVERSIFOLIA / PIGEON PLUM COCOLOBIA UVIFERA / SEA GRAPE CONOCARPUS ERECTUS SERICEUS / SILVER BUTTON WOOD	11
	LARGE SHRUB / SMALL TREE 6' HT / 4" SPD CONOCARPUS ERECTUS SERICEUS / SILVER BUTTON WOOD EUGENIA RHOMBEA / RED STOPPER MYRCIANTHES FRAGRANS / SIMPSON'S STOPPER PIMENTA RACEMOSA / MALGUEA	71
	SHRUBS 18" - 24" HT @ 24 - 30" O.C. CHRYSOBALANUS ICACO / COCO PLUM CLUSIA GUTTIFERA / SMALL LEAF CLUSIA PSYCHOTRIA NERVOSA / WILD COFFEE SABAL MINOR / DWARF PALMETTO SERENOA REPENS 'CINEREA' / SILVER SAW PALMETTO	5,276 SF 176 176 122 122
	GROUNDCOVERS/ VINES 12" - 18" HT ARACHIS GLABRATA / PERENNIAL PEANUT ERNOEIA LITTORALIS / GOLDEN CREEPER FICUS REPENS / CREEPING FIG IPOMOEIA PES-CAPRAE / POHUEHUE PHILODENDRON X 'BURLIE MARX' / BURLIE MARX PHILODENDRON PHILODENDRON X 'XANADU' / XANADU PHILODENDRON TRIPSACUM FLORIDANUM / FLORIDA GAMAGRASS	3,893 SF
	NATURAL SOD	2,185 SF

- NOTES:
1. PLANT SCHEDULE SHALL BE FINALIZED DURING PERMITTING AND WILL COMPLY WITH REQUIREMENTS IN CHP. 26.
 2. REFER TO SHEET L4 FOR LANDSCAPE LEGEND.
 3. REFER TO TREE DISPOSITION PLAN FOR EXISTING TREES TO REMAIN OR BE RELOCATED.





355 ALHAMBRA CIRCLE, SUITE 1400
CORAL GABLES, FL 33134
PHONE: 305-673-2025
WWW.KIMLEY-HORN.COM REGISTRY 696

111 EAST FLAGLER ST #205
MIAMI FL 33131
T 305.977.0082
E info@nhc-office.com

NC-office
architecture / urbanism

L3

05-11-20

LANDSCAPE PLAN

LEHRMAN COMMUNITY DAY SCHOOL
727 Lehman Drive / 77th Street | Miami Beach, Florida 33141

19172

THIS ITEM HAS BEEN DIGITALLY SIGNED & SEALED BY
MATTHEW VINCENT WISNIEWSKI ON THE DATE
05/11/2020. THE SEAL, PRINTED COPIES OF THIS
DOCUMENT, AND THE SIGNATURE MUST BE VERIFIED ON ANY
ELECTRONIC COPY

Plotted By: Gonzalez, Gregory Sheet Set: LEHRMAN SCHOOL EXPANSION Layout: L4 LANDSCAPE LEGEND May 08, 2020 02:38:35pm K:\mib_civil\143137000 lehrman school expansion\landscape\CADD\plansheets\L3A LANDSCAPE LEGEND.dwg

This document, together with the concepts and designs presented herein, as an instrument of service, is intended only for the specific purpose and client for which it was prepared. Reuse of and improper reliance on this document without written authorization and adaptation by Kimley-Horn and Associates, Inc. shall be without liability to Kimley-Horn and Associates, Inc.

CITY OF MIAMI BEACH LANDSCAPE LEGEND

Zoning District RM-1 Net Lot Area: 1.44 Acres or 62,590 SF

(North Beach Private and Public School District Overlay)

OPEN SPACE

- A. Square feet of open space required by Chp. 33, as indicated on site plan:
Net Lot area = 62,590 x N/A
- B. Square feet of parking lot open space required by Chp 18A, as indicated on site plan:
The number of parking spaces = 29 x 10 SF per parking space=
- C. Total SF of landscaped open space required by Chp. 126 = A + B

LAWN AREA CALCULATION

- A. Total square feet of landscape open space required by Chp. 126=
- B. Maximum lawn area permitted = 30% x required landscape open space =

Note: Very dry tolerant grasses and low growing native plants, including grasses and forbs, as referenced in the Landscape Manual, may be used as groundcover beyond the maximum permitted grass area specified.

TREES

- A. The number of site trees required per net lot area = 28 site trees per net lot area
less the existing number of trees that meet minimum requirements 7 existing trees
required trees x net lot acreage = 41 trees - existing trees
- B. Percentage of native trees required = the number of trees provided x 30% =
Percentage of low maintenance and drought tolerant trees = provided trees x 50% =
- D. Street trees (max. average spacing of 20' O.C.):
493 linear feet along street / 20 =
- E. Street trees located directly beneath power lines (max. average spacing of 25' O.C.):
0 linear feet along street / 20 =
- F. Total number of trees provided: required site trees + street trees =

SHRUBS

- A. The total number of trees required x 12 = the number of shrubs required
- B. The number of shrubs required x 50% = the number of native shrubs required

LARGE SHRUBS OR SMALL TREES

- A. The total number of shrubs required x 10% = the number of large shrubs required
- B. The number of large shrubs or small trees required x 50% = the number of native large shrubs or small trees required

REQUIRED		PROVIDED	
N/A	SF	12,490	SF
290	SF	2,835	SF
N/A	SF	15,325	SF
N/A	SF		
N/A	SF	2,185	SF
34	trees	34	trees
11	trees	11	trees
17	trees	19	trees
25	trees	25	trees
-	trees	-	trees
59	trees	59	trees
704	shrubs	704	shrubs
352	shrubs	352	shrubs
71	shrubs	71	shrubs
36	shrubs	36	shrubs

(includes existing trees)



355 ALHAMBRA CIRCLE, SUITE 1400
CORAL GABLES, FL 33134
PHONE: 305-673-2025
WWW.KIMLEY-HORN.COM REGISTRY 696

NC-office
architecture / urbanism

111 EAST FLAGLER ST #205
MIAMI, FL 33131
T 305.977.0082
E info@nrc-office.com

THIS ITEM HAS BEEN DIGITALLY SIGNED & SEALED BY
MATTHEW VINCENT WISNEYSKI ON THE DATE
ADJACENT TO THE SEAL. PRINTED COPIES OF THIS
DOCUMENT ARE UNRELIABLE. ANY
SIGNATURE MUST BE VERIFIED ON ANY
ELECTRONIC COPY

LEHRMAN COMMUNITY DAY SCHOOL
727 Lehman Drive / 77th Street | Miami Beach, Florida 33141

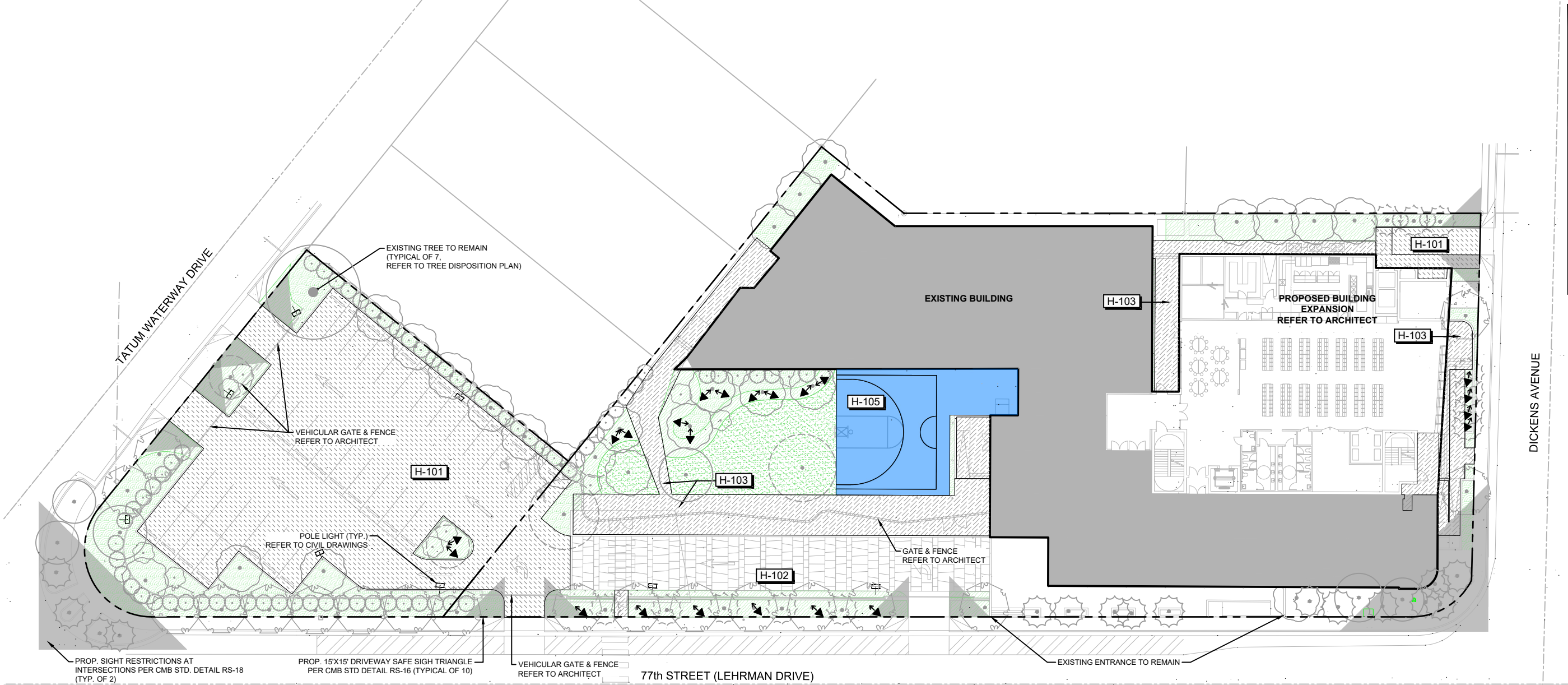
LANDSCAPE LEGEND

L3A

05-11-20

19172

© 2020 KIMLEY-HORN AND ASSOCIATES, INC.



REFERENCE NOTES SCHEDULE

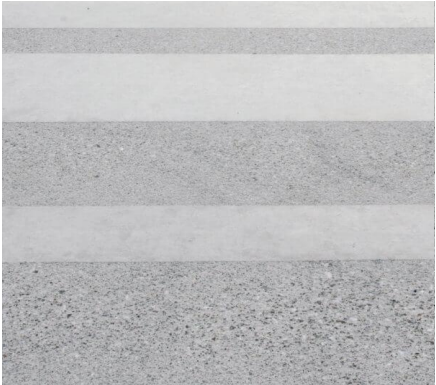
SYMBOL	HARDSCAPE DESCRIPTION	QTY	DETAIL
H-101	VEHICULAR-RATED PAVING BY CIVIL ENGINEER		
H-102	VEHICULAR-RATED DECORATIVE PAVING BY ARCHITECT		
H-103	PEDESTRIAN-RATED DECORATIVE PAVING		
H-104	COURT PAVING BY ARCHITECT		

HARDSCAPE NOTE:
REFER TO MATERIAL BOARD ON SHEET 3.2 FOR ADDITIONAL
INFORMATION & REFERENCE IMAGES.

LIGHTING SCHEDULE

SYMBOL	MANUFACTURER/MODEL/DESCRIPTION	QTY
UPLIGHT	Order code: REFNOTE	22
POLE LIGHT	(REFER TO CIVIL DRAWINGS)	

LIGHTING NOTE:
SITE LIGHTING DESIGN, PHOTOMETRIC CALCULATIONS, MECHANICAL, ELECTRICAL
ENGINEERING, SAFETY/EGRESS REQUIREMENTS ARE NOT PART O THIS SCOPE OF
SERVICES. REFER TO MEP AND CIVIL DRAWINGS.



DECORATIVE PAVING 01



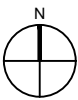
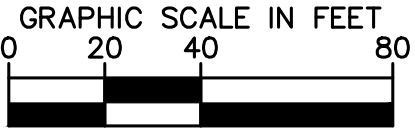
DECORATIVE PAVING 02



DECORATIVE PAVING 03



IN-GROUND UPLIGHT FOR TREES



355 ALHAMBRA CIRCLE, SUITE 1400
CORAL GABLES, FL 33134
PHONE:305-673-2025
WWW.KIMLEY-HORN.COM REGISTRY 696



111 EAST FLAGLER ST #205
MIAMI FL 33131
T 305.977.0082
E info@nc-office.com

NC-office
architecture / urbanism

L4

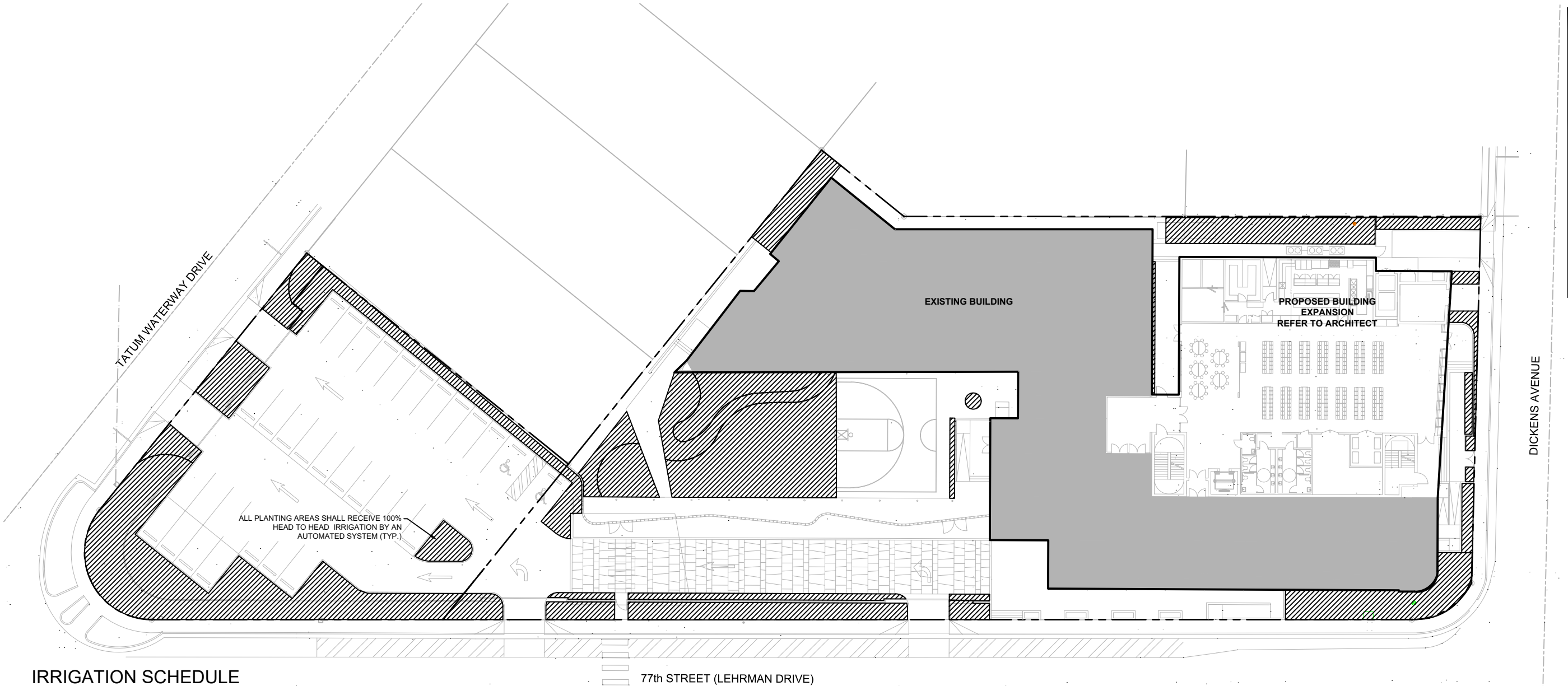
05-11-20

HARDSCAPE PLAN

LEHRMAN COMMUNITY DAY SCHOOL
727 Lehrman Drive / 77th Street | Miami Beach, Florida 33141

19172

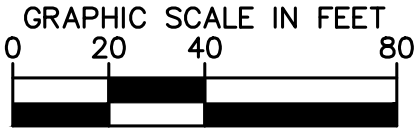
THIS ITEM HAS BEEN DIGITALLY SIGNED & SEALED BY
MATTHEW VINCENT WINNEYSKON ON THE DATE
ADJACENT TO THE SEAL. PRINTED COPIES OF THIS
DOCUMENT MAY BE USED FOR CONSTRUCTION
AND THE SIGNATURE MUST BE VERIFIED ON ANY
ELECTRONIC COPY



IRRIGATION SCHEDULE

SYMBOL	MANUFACTURER/MODEL/DESCRIPTION	PSI
	RAIN BIRD 1804-SAM-PRS ADJ TURF SPRAY 4.0" POP-UP SPRINKLER WITH CO-MOLDED WIPER SEAL. 1/2" NPT FEMALE THREADED INLET. WITH SEAL-A-MATIC CHECK VALVE. PRESSURE REGULATING.	30
	RAIN BIRD 1804-SAM-PRS ADJ TURF SPRAY 4.0" POP-UP SPRINKLER WITH CO-MOLDED WIPER SEAL. 1/2" NPT FEMALE THREADED INLET. WITH SEAL-A-MATIC CHECK VALVE. PRESSURE REGULATING.	30
	RAIN BIRD 1812-PRS ADJ SHRUB SPRAY 12.0" POP-UP SPRINKLER WITH CO-MOLDED WIPER SEAL. SIDE AND BOTTOM INLET. 1/2" NPT FEMALE THREADED INLET. WITH PRESSURE REGULATING DEVICE.	30
	RAIN BIRD 1812-PRS ADJ SHRUB SPRAY 12.0" POP-UP SPRINKLER WITH CO-MOLDED WIPER SEAL. SIDE AND BOTTOM INLET. 1/2" NPT FEMALE THREADED INLET. WITH PRESSURE REGULATING DEVICE.	30
	RAIN BIRD 1300AF FLOOD FLOOD BUBBLER ON IPS FLEX HOSE PER DETAIL	30
SYMBOL	MANUFACTURER/MODEL/DESCRIPTION	
	RAIN BIRD PEB 1", 1-1/2", 2" PLASTIC INDUSTRIAL VALVES. LOW FLOW OPERATING CAPABILITY, GLOBE CONFIGURATION.	
	BACKFLOW DEVICE 2" REFER TO CIVIL DRAWINGS	
	RAIN BIRD ESP12LXMEF 48 STATION COMMERCIAL CONTROLLER. MOUNT IN RAINBIRD LXMMSS PEDESTAL. FLOW SENSING AND WATER MANAGEMENT CAPABILITIES.	
	IRRIGATION LATERAL LINE: PVC CLASS 200 SDR 21 PVC CLASS 200 IRRIGATION PIPE. ONLY LATERAL TRANSITION PIPE SIZES 1" AND ABOVE ARE INDICATED ON THE PLAN, WITH ALL OTHERS BEING 3/4" IN SIZE.	
	IRRIGATION MAINLINE: PVC CLASS 200 SDR 21 PVC CLASS 200 IRRIGATION PIPE.	
	PIPE SLEEVE: PVC SCHEDULE 40 TYPICAL PIPE SLEEVE FOR IRRIGATION PIPE. PIPE SLEEVE SIZE SHALL ALLOW FOR IRRIGATION PIPING AND THEIR RELATED COUPLINGS TO EASILY SLIDE THROUGH SLEEVING MATERIAL. EXTEND SLEEVES 18 INCHES BEYOND EDGES OF PAVING FOR CONSTRUCTION.	
	Valve Callout: # Valve Number # Valve Flow # Valve Size	

NOTES:
1. IRRIGATION DESIGN AND SPECIFICATIONS SHALL BE FINALIZED DURING
PERMITTING AND WILL COMPLY WITH REQUIREMENTS IN CHP. 26.



355 ALHAMBRA CIRCLE, SUITE 1400
CORAL GABLES, FL 33134
PHONE: 305-673-2025
WWW.KIMLEY-HORN.COM REGISTRY 696

NC-office
architecture / urbanism

111 EAST FLAGLER ST #205
MIAMI FL 33131
T 305.977.0082
E info@nc-office.com

19172

LEHRMAN COMMUNITY DAY SCHOOL
727 Lehrman Drive / 77th Street | Miami Beach, Florida 33141