

MATERIAL LEGEND

GL-01	LAMINATED TINTED GLASS UNITS WITH LARGE MISSILE IMPACT CLEAR INTERLAYER DARK GRAY KYNAR FINISH ON METAL FRAME
GL-02	TEMPERED FRITTED GLASS
CP-01	5/8" EXTERIOR CEMENT PLASTER SMOOTH FINISH DARK GRAY
CP-02	5/8" EXTERIOR CEMENT PLASTER SMOOTH FINISH LIGHT GRAY
CP-03	5/8" EXTERIOR CEMENT PLASTER SMOOTH FINISH. COLOR TBD
MTL-01	ARCHITECTURAL METAL, BLUE COPPER
MTL-02	DECORATIVE METAL SCREEN DIVIDER - PATTERN TBD
MTL-03	METAL CANOPY. COLOR DARK GRAY TO MATCH GLAZING FRAMES
MTL-04	ALUMINUM PANELS (COLOR ALTERNATING DARK AND LIGHT SHADES OF GREEN AND BLUE)

MTL-05	ALUMINUM FINIS
MTL-06	STRUCTURAL STEEL MEMBERS CLADDED IN ALUMINUM BREAK METAL FINISH TO MATCH STOREFRONT FRAMES
MTL-07	METAL HANDRAIL/TOP RAIL
CNP-01	RETRACTABLE CANOPY
CNC-01	BREEZE BLOCK - PATTERN TBD
CNC-02	CONCRETE EYEBROW W/ 5/8" EXTERIOR CEMENT PLASTER SMOOTH FINISH
PL-01	LANDSCAPE FEATURE
PL-02	PLANTED TRELLIS STRUCTURE
TS-01	TENANT SIGNAGE (UNDER SEPARATE SUBMITTAL)



URBIN RETREAT
1234 WASHINGTON AVENUE _ MIAMI BEACH _ FLORIDA



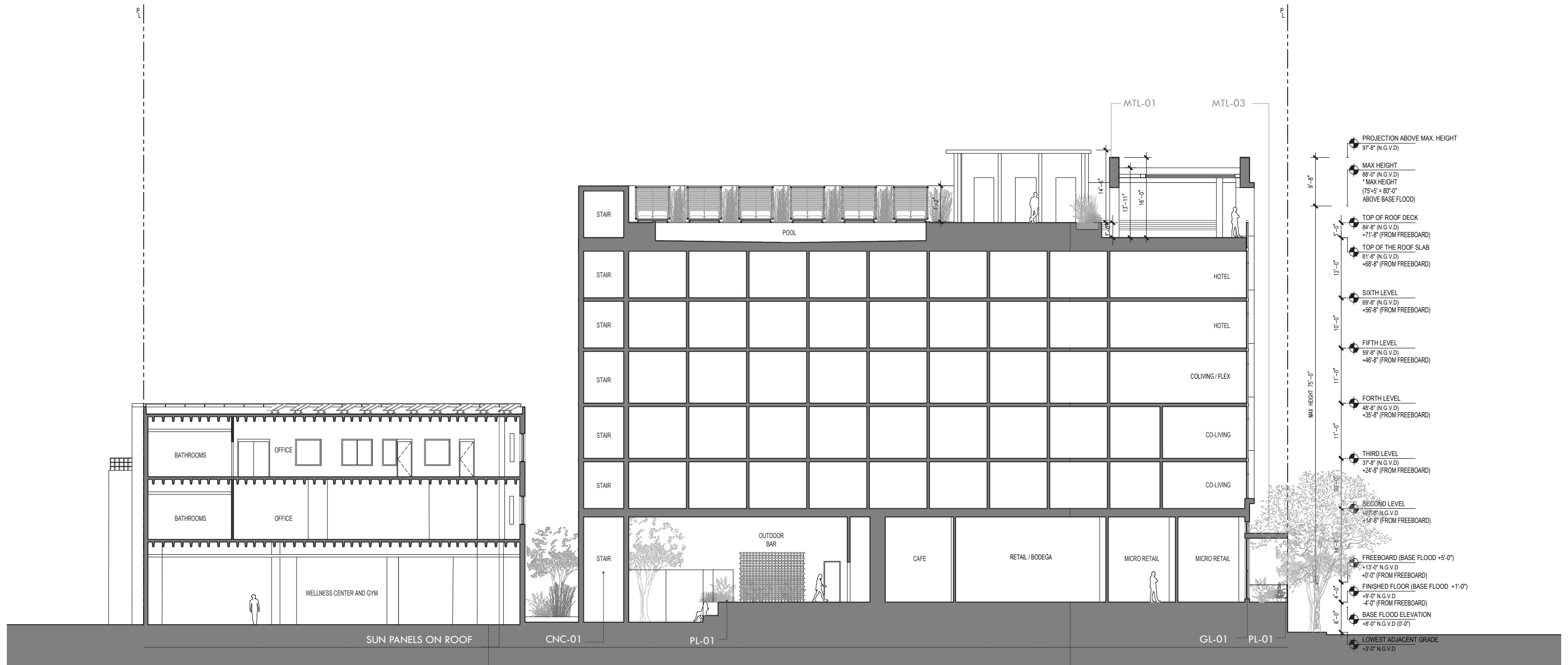
No copies, transmissions, reproductions or electronic manipulation of any portion of these drawings in whole or in part are to be made without the express written permission of Touzet Studio Design & Architecture. All designs indicated in these drawings are property of Touzet Studio Design & Architecture. All copyrights reserved (c) 2020.



PROPOSED SECTION LOOKING NORTH

SCALE: 1:20

A-31



MATERIAL LEGEND

- GL-01 LAMINATED TINTED GLASS UNITS WITH LARGE MISSILE IMPACT CLEAR INTERLAYER DARK GRAY KYNAR FINISH ON METAL FRAME
- GL-02 TEMPERED FRITTED GLASS
- CP-01 5/8" EXTERIOR CEMENT PLASTER SMOOTH FINISH DARK GRAY
- CP-02 5/8" EXTERIOR CEMENT PLASTER SMOOTH FINISH LIGHT GRAY
- CP-03 5/8" EXTERIOR CEMENT PLASTER SMOOTH FINISH. COLOR TBD
- MTL-01 ARCHITECTURAL METAL, BLUE COPPER
- MTL-02 DECORATIVE METAL SCREEN DIVIDER - PATTERN TBD
- MTL-03 METAL CANOPY. COLOR DARK GRAY TO MATCH GLAZING FRAMES
- MTL-04 ALUMINUM PANELS (COLOR ALTERNATING DARK AND LIGHT SHADES OF GREEN AND BLUE)

- MTL-05 ALUMINUM FINIS
- MTL-06 STRUCTURAL STEEL MEMBERS CLADDIED IN ALUMINUM BREAK METAL FINISH TO MATCH STOREFRONT FRAMES
- MTL-07 METAL HANDRAIL/TOP RAIL
- CNP-01 RETRACTABLE CANOPY
- CNC-01 BREEZE BLOCK - PATTERN TBD
- CNC-02 CONCRETE EYEBROW W/ 5/8" EXTERIOR CEMENT PLASTER SMOOTH FINISH
- PL-01 LANDSCAPE FEATURE
- PL-02 PLANTED TRELLIS STRUCTURE
- TS-01 TENANT SIGNAGE (UNDER SEPARATE SUBMITTAL)



URBIN RETREAT
1234 WASHINGTON AVENUE _ MIAMI BEACH _ FLORIDA



No copies, transmissions, reproductions or electronic manipulation of any portion of these drawings in whole or in part are to be made without the express written permission of Touzet Studio Design & Architecture. All designs indicated in these drawings are property of Touzet Studio Design & Architecture. All copyrights reserved (c) 2020.



PROPOSED SECTION LOOKING WEST

SCALE: 1:20

A-31.1



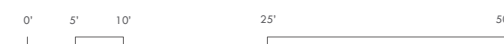
MATERIAL LEGEND

- GL-01 LAMINATED TINTED GLASS UNITS WITH LARGE MISSILE IMPACT CLEAR INTERLAYER DARK GRAY KYNAR FINISH ON METAL FRAME
- GL-02 TEMPERED FRITTED GLASS
- CP-01 5/8" EXTERIOR CEMENT PLASTER SMOOTH FINISH DARK GRAY
- CP-02 5/8" EXTERIOR CEMENT PLASTER SMOOTH FINISH LIGHT GRAY
- CP-03 5/8" EXTERIOR CEMENT PLASTER SMOOTH FINISH. COLOR TBD
- MTL-01 ARCHITECTURAL METAL, BLUE COPPER
- MTL-02 DECORATIVE METAL SCREEN DIVIDER - PATTERN TBD
- MTL-03 METAL CANOPY. COLOR DARK GRAY TO MATCH GLAZING FRAMES
- MTL-04 ALUMINUM PANELS (COLOR ALTERNATING DARK AND LIGHT SHADES OF GREEN AND BLUE)

- MTL-05 ALUMINUM FINIS
- MTL-06 STRUCTURAL STEEL MEMBERS CLADDEN IN ALUMINUM BREAK METAL FINISH TO MATCH STOREFRONT FRAMES
- MTL-07 METAL HANDRAIL/TOP RAIL
- CNP-01 RETRACTABLE CANOPY
- CNC-01 BREEZE BLOCK - PATTERN TBD
- CNC-02 CONCRETE EYEBROW W/ 5/8" EXTERIOR CEMENT PLASTER SMOOTH FINISH
- PL-01 LANDSCAPE FEATURE
- PL-02 PLANTED TRELLIS STRUCTURE
- TS-01 TENANT SIGNAGE (UNDER SEPARATE SUBMITTAL)

HISTORIC BUILDING LEGEND

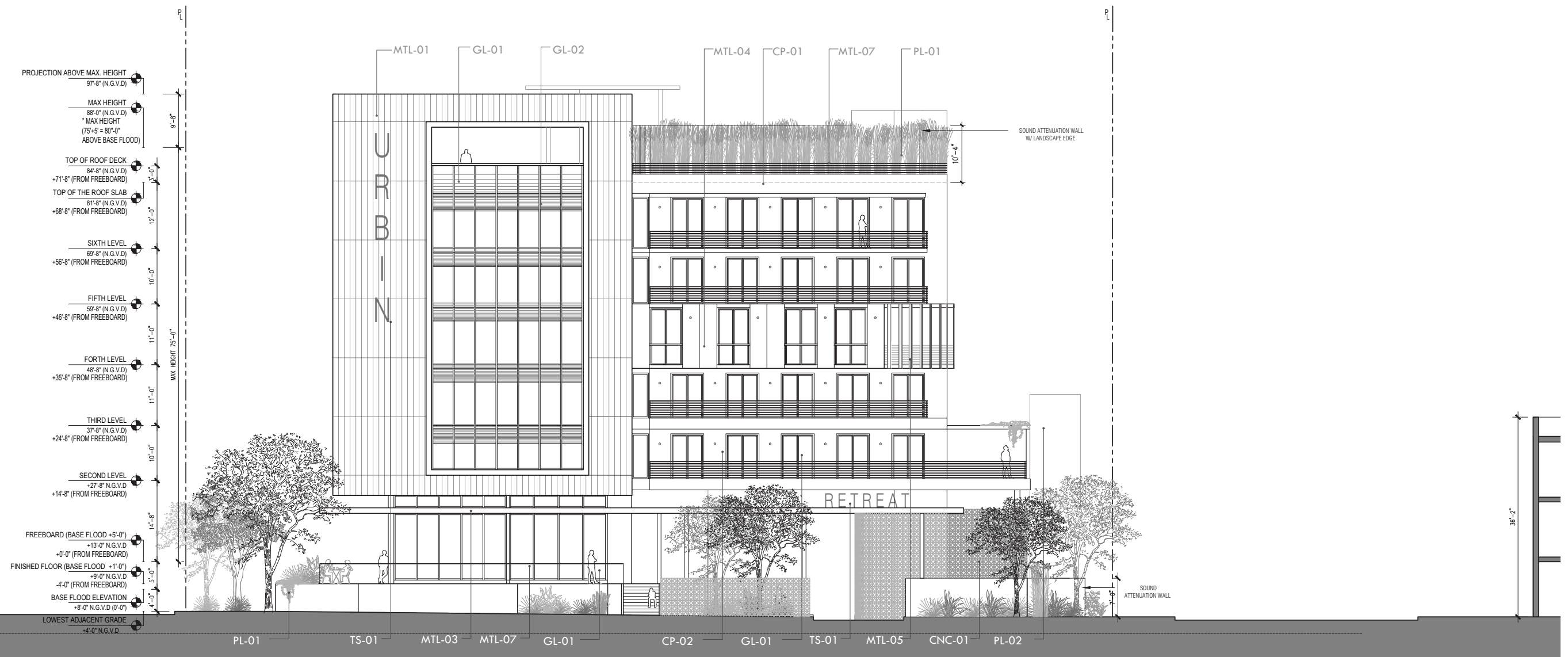
- 1 HISTORIC METAL BRISE SOLEIL TO BE RESTORED
- 2 EXISTING GLAZING TO BE REPLACED WITH CODE COMPLIANT SYSTEM WHILE MAINTAINING ORIGINAL DESIGN INTENT
- 3 ORIGINAL HISTORIC RAIN SCREEN TO REMAIN AND BE RESTORED, CODE COMPLIANT GLAZING TO BE INSTALLED
- 4 EXISTING STONE PANELS TO BE REPAIRED AS NEEDED
- 5 RESTORE ORIGINAL CANOPY
- 6 NEW GLASS OPENING TO MATCH EXISTING WINDOWS
- 7 NEW TOP RAILING TO ACHIEVE MIN. HEIGHT REQUIRED BY CODE
- 8 NEW RETRACTABLE ROOF
- 9 HISTORIC FLAG POLES TO BE RESTORED



URBIN RETREAT
 1234 WASHINGTON AVENUE _ MIAMI BEACH _ FLORIDA

PROPOSED ELEVATION: WASHINGTON AVENUE

SCALE: 1:20



MATERIAL LEGEND

GL-01	LAMINATED TINTED GLASS UNITS WITH LARGE MISSILE IMPACT CLEAR INTERLAYER DARK GRAY KYNAR FINISH ON METAL FRAME
GL-02	TEMPERED FRITTED GLASS
CP-01	5/8" EXTERIOR CEMENT PLASTER SMOOTH FINISH DARK GRAY
CP-02	5/8" EXTERIOR CEMENT PLASTER SMOOTH FINISH LIGHT GRAY
CP-03	5/8" EXTERIOR CEMENT PLASTER SMOOTH FINISH. COLOR TBD
MTL-01	ARCHITECTURAL METAL, BLUE COPPER
MTL-02	DECORATIVE METAL SCREEN DIVIDER - PATTERN TBD
MTL-03	METAL CANOPY. COLOR DARK GRAY TO MATCH GLAZING FRAMES
MTL-04	ALUMINUM PANELS (COLOR ALTERNATING DARK AND LIGHT SHADES OF GREEN AND BLUE)

MTL-05	ALUMINUM FINIS
MTL-06	STRUCTURAL STEEL MEMBERS CLADDED IN ALUMINUM BREAK METAL FINISH TO MATCH STOREFRONT FRAMES
MTL-07	METAL HANDRAIL/TOP RAIL
CNP-01	RETRACTABLE CANOPY
CNC-01	BREEZE BLOCK - PATTERN TBD
CNC-02	CONCRETE EYEBROW W/ 5/8" EXTERIOR CEMENT PLASTER SMOOTH FINISH
PL-01	LANDSCAPE FEATURE
PL-02	PLANTED TRELLIS STRUCTURE
TS-01	TENANT SIGNAGE (UNDER SEPARATE SUBMITTAL)



URBIN RETREAT
1234 WASHINGTON AVENUE _ MIAMI BEACH _ FLORIDA



No copies, transmissions, reproductions or electronic manipulation of any portion of these drawings in whole or in part are to be made without the express written permission of Touzet Studio Design & Architecture. All designs indicated in these drawings are property of Touzet Studio Design & Architecture. All copyrights reserved (c) 2020.



PROPOSED ELEVATION: 13TH STREET
SCALE: 1:20



MATERIAL LEGEND

GL-01	LAMINATED TINTED GLASS UNITS WITH LARGE MISSILE IMPACT CLEAR INTERLAYER DARK GRAY KYNAR FINISH ON METAL FRAME
GL-02	TEMPERED FRITTED GLASS
CP-01	5/8" EXTERIOR CEMENT PLASTER SMOOTH FINISH DARK GRAY
CP-02	5/8" EXTERIOR CEMENT PLASTER SMOOTH FINISH LIGHT GRAY
CP-03	5/8" EXTERIOR CEMENT PLASTER SMOOTH FINISH. COLOR TBD
MTL-01	ARCHITECTURAL METAL, BLUE COPPER
MTL-02	DECORATIVE METAL SCREEN DIVIDER - PATTERN TBD
MTL-03	METAL CANOPY. COLOR DARK GRAY TO MATCH GLAZING FRAMES
MTL-04	ALUMINUM PANELS (COLOR ALTERNATING DARK AND LIGHT SHADES OF GREEN AND BLUE)

MTL-05	ALUMINUM FINIS
MTL-06	STRUCTURAL STEEL MEMBERS CLADDED IN ALUMINUM BREAK METAL FINISH TO MATCH STOREFRONT FRAMES
MTL-07	METAL HANDRAIL/TOP RAIL
CNP-01	RETRACTABLE CANOPY
CNC-01	BREEZE BLOCK - PATTERN TBD
CNC-02	CONCRETE EYEBROW W/ 5/8" EXTERIOR CEMENT PLASTER SMOOTH FINISH
PL-01	LANDSCAPE FEATURE
PL-02	PLANTED TRELLIS STRUCTURE
TS-01	TENANT SIGNAGE (UNDER SEPARATE SUBMITTAL)

HISTORIC BUILDING LEGEND

1	HISTORIC METAL BRISE SOLEIL TO BE RESTORED
2	EXISTING GLAZING TO BE REPLACED WITH CODE COMPLIANT SYSTEM WHILE MAINTAINING ORIGINAL DESIGN INTENT
3	ORIGINAL HISTORIC RAIN SCREEN TO REMAIN AND BE RESTORED, CODE COMPLIANT GLAZING TO BE INSTALLED
4	EXISTING STONE PANELS TO BE REPAIRED AS NEEDED
5	RESTORE ORIGINAL CANOPY
6	NEW GLASS OPENING TO MATCH EXISTING WINDOWS
7	NEW TOP RAILING TO ACHIEVE MIN. HEIGHT REQUIRED BY CODE
8	NEW RETRACTABLE ROOF
9	HISTORIC FLAG POLES TO BE RESTORED



URBIN RETREAT
1234 WASHINGTON AVENUE _ MIAMI BEACH _ FLORIDA



No copies, transmissions, reproductions or electronic manipulation of any portion of these drawings in whole or in part are to be made without the express written permission of Touzet Studio Design & Architecture. All designs indicated in these drawings are property of Touzet Studio Design & Architecture. All copyrights reserved (c) 2020.

PROPOSED ELEVATION: DREXEL AVENUE

SCALE: 1:20

A-34



MATERIAL LEGEND

GL-01	LAMINATED TINTED GLASS UNITS WITH LARGE MISSILE IMPACT CLEAR INTERLAYER DARK GRAY KYNAR FINISH ON METAL FRAME
GL-02	TEMPERED FRITTED GLASS
CP-01	5/8" EXTERIOR CEMENT PLASTER SMOOTH FINISH DARK GRAY
CP-02	5/8" EXTERIOR CEMENT PLASTER SMOOTH FINISH LIGHT GRAY
CP-03	5/8" EXTERIOR CEMENT PLASTER SMOOTH FINISH. COLOR TBD
MTL-01	ARCHITECTURAL METAL, BLUE COPPER
MTL-02	DECORATIVE METAL SCREEN DIVIDER - PATTERN TBD
MTL-03	METAL CANOPY. COLOR DARK GRAY TO MATCH GLAZING FRAMES
MTL-04	ALUMINUM PANELS (COLOR ALTERNATING DARK AND LIGHT SHADES OF GREEN AND BLUE)

MTL-05	ALUMINUM FINIS
MTL-06	STRUCTURAL STEEL MEMBERS CLADDIED IN ALUMINUM BREAK METAL FINISH TO MATCH STOREFRONT FRAMES
MTL-07	METAL HANDRAIL/TOP RAIL
CNP-01	RETRACTABLE CANOPY
CNC-01	BREEZE BLOCK - PATTERN TBD
CNC-02	CONCRETE EYEBROW W/ 5/8" EXTERIOR CEMENT PLASTER SMOOTH FINISH
PL-01	LANDSCAPE FEATURE
PL-02	PLANTED TRELLIS STRUCTURE
TS-01	TENANT SIGNAGE (UNDER SEPARATE SUBMITTAL)

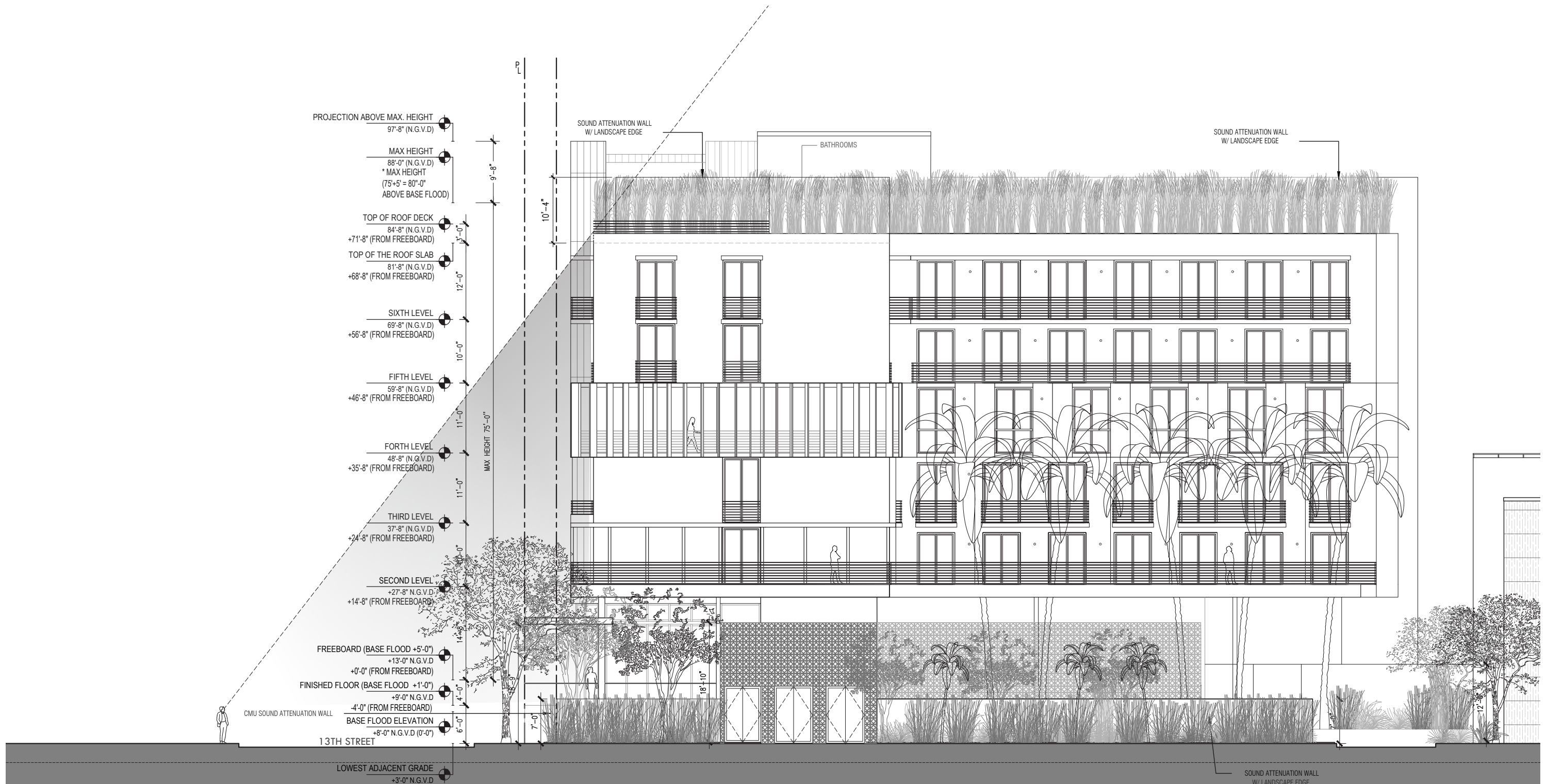
URBIN RETREAT
 1234 WASHINGTON AVENUE _ MIAMI BEACH _ FLORIDA

PROPOSED SOUTH ELEVATION

SCALE: 1:20

A-34-0

No copies, transmissions, reproductions or electronic manipulation of any portion of these drawings in whole or in part are to be made without the express written permission of Touzet Studio Design & Architecture. All designs indicated in these drawings are property of Touzet Studio Design & Architecture. All copyrights reserved (c) 2020.



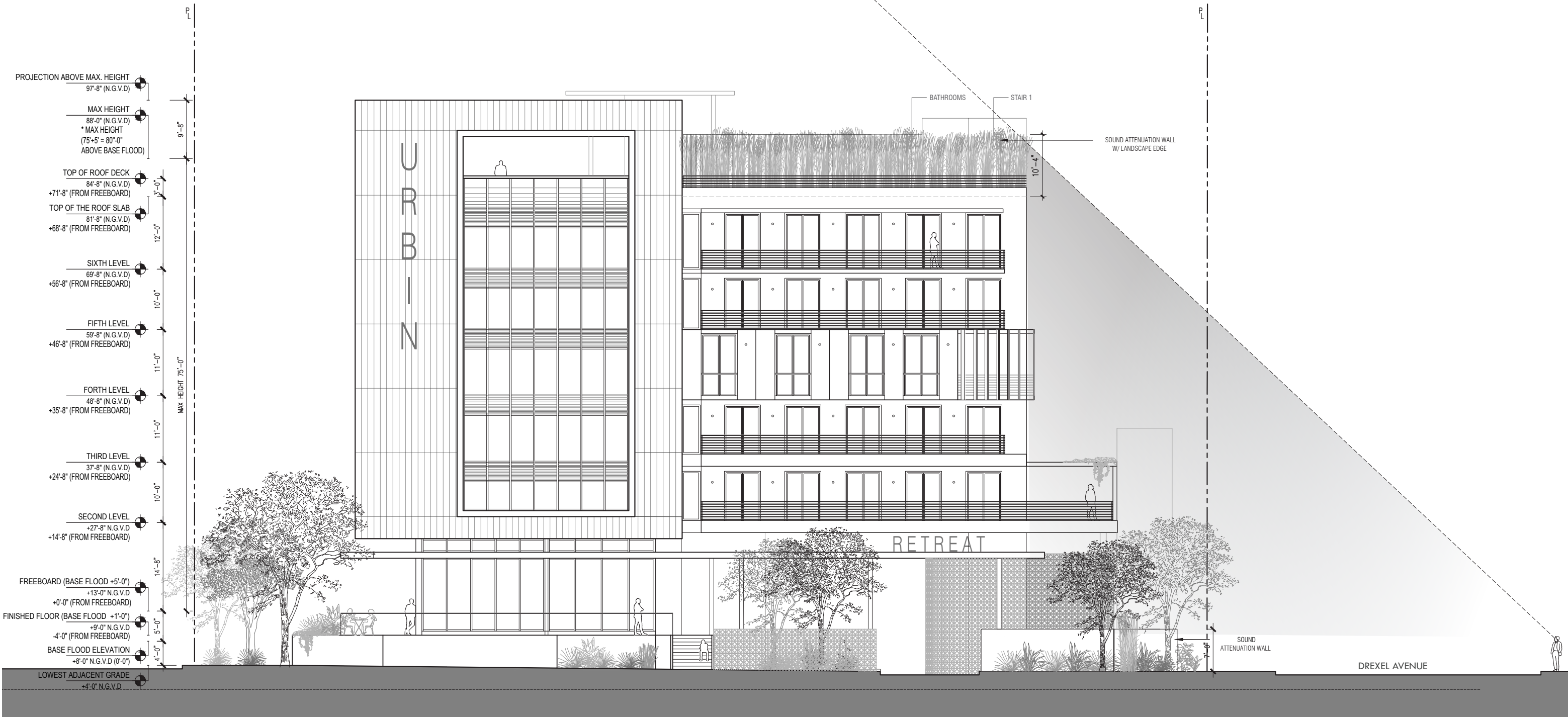
URBIN RETREAT
1234 WASHINGTON AVENUE _ MIAMI BEACH _ FLORIDA

LINE OF SIGHT DIAGRAM - DREXEL AVENUE
SCALE: 1/16" = 1'-0"

TOUZET STUDIO
No copies, transmissions, reproductions or electronic manipulation of any portion of these drawings in whole or in part are to be made without the express written permission of Touzet Studio Design & Architecture. All designs indicated in these drawings are property of Touzet Studio Design & Architecture. All copyrights reserved (c) 2020.

A-34.1

PLANNING BOARD - FINAL SUBMITTAL - 04 FEBRUARY 2020



URBIN RETREAT
1234 WASHINGTON AVENUE _ MIAMI BEACH _ FLORIDA



No copies, transmissions, reproductions or electronic manipulation of any portion of these drawings in whole or in part are to be made without the express written permission of Touzet Studio Design & Architecture. All designs indicated in these drawings are property of Touzet Studio Design & Architecture. All copyrights reserved (c) 2020.

LINE OF SIGHT DIAGRAM - 13TH STREET
SCALE: 1/16" = 1'-0"

A-34.2

PLANNING BOARD - FINAL SUBMITTAL - 04 FEBRUARY 2020



METAL BRISE SOLEL



ALUMINUM PRE-PATINA PANELS



URBIN RETREAT
1234 WASHINGTON AVENUE _ MIAMI BEACH _ FLORIDA



No copies, transmissions, reproductions or electronic manipulation of any portion of these drawings in whole or in part are to be made without the express written permission of Touzet Studio Design & Architecture. All designs indicated in these drawings are property of Touzet Studio Design & Architecture. All copyrights reserved (c) 2020.

VIEW FROM WASHINGTON AVENUE



URBIN RETREAT
1234 WASHINGTON AVENUE _ MIAMI BEACH _ FLORIDA



No copies, transmissions, reproductions or electronic manipulation of any portion of these drawings in whole or in part are to be made without the express written permission of Touzet Studio Design & Architecture. All designs indicated in these drawings are property of Touzet Studio Design & Architecture. All copyrights reserved (c) 2020.

VIEW FROM DREXEL AVENUE



VIEW FROM DREXEL AVENUE



VIEW FROM SHADY PLAZA ON WASHINGTON AVENUE



URBIN RETREAT
1234 WASHINGTON AVENUE _ MIAMI BEACH _ FLORIDA

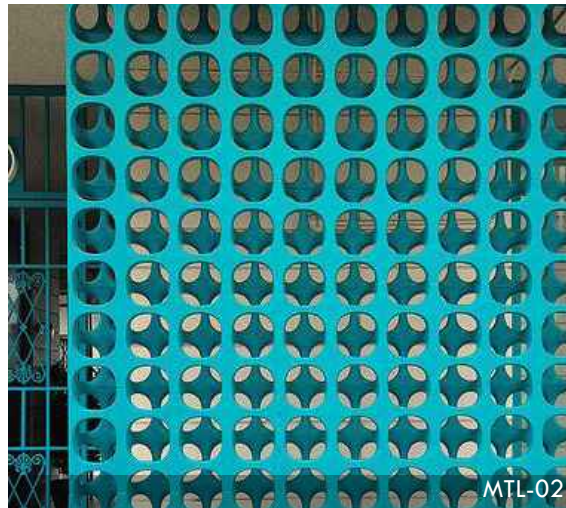


No copies, transmissions, reproductions or electronic manipulation of any portion of these drawings in whole or in part are to be made without the express written permission of Touzet Studio Design & Architecture. All designs indicated in these drawings are property of Touzet Studio Design & Architecture. All copyrights reserved (c) 2020.

PROPOSED SITE VIEWS



MTL-01



MTL-02



MTL-04



MTL-05



CNC-01



CP-01



CP-02



MTL-03 / MTL-6 / MTL-07



GL-01

MATERIAL LEGEND

- GL-01 LAMINATED TINTED GLASS UNITS WITH LARGE MISSILE IMPACT CLEAR INTERLAYER DARK GRAY KYNAR FINISH ON METAL FRAME
- GL-02 TEMPERED FRITTED GLASS
- CP-01 5/8" EXTERIOR CEMENT PLASTER SMOOTH FINISH DARK GRAY
- CP-02 5/8" EXTERIOR CEMENT PLASTER SMOOTH FINISH LIGHT GRAY
- CP-03 5/8" EXTERIOR CEMENT PLASTER SMOOTH FINISH. COLOR TBD
- MTL-01 ARCHITECTURAL METAL, BLUE COPPER
- MTL-02 DECORATIVE METAL SCREEN DIVIDER - PATTERN TBD
- MTL-03 METAL CANOPY. COLOR DARK GRAY TO MATCH GLAZING FRAMES
- MTL-04 ALUMINUM PANELS (COLOR ALTERNATING DARK AND LIGHT SHADES OF GREEN AND BLUE)

- MTL-05 ALUMINUM FINIS
- MTL-06 STRUCTURAL STEEL MEMBERS CLADDED IN ALUMINUM BREAK METAL FINISH TO MATCH STOREFRONT FRAMES
- MTL-07 METAL HANDRAIL/TOP RAIL
- CNP-01 RETRACTABLE CANOPY
- CNC-01 BREEZE BLOCK - PATTERN TBD
- CNC-02 CONCRETE EYEBROW W/ 5/8" EXTERIOR CEMENT PLASTER SMOOTH FINISH
- PL-01 LANDSCAPE FEATURE
- PL-02 PLANTED TRELLIS STRUCTURE
- TS-01 TENANT SIGNAGE (UNDER SEPARATE SUBMITTAL)



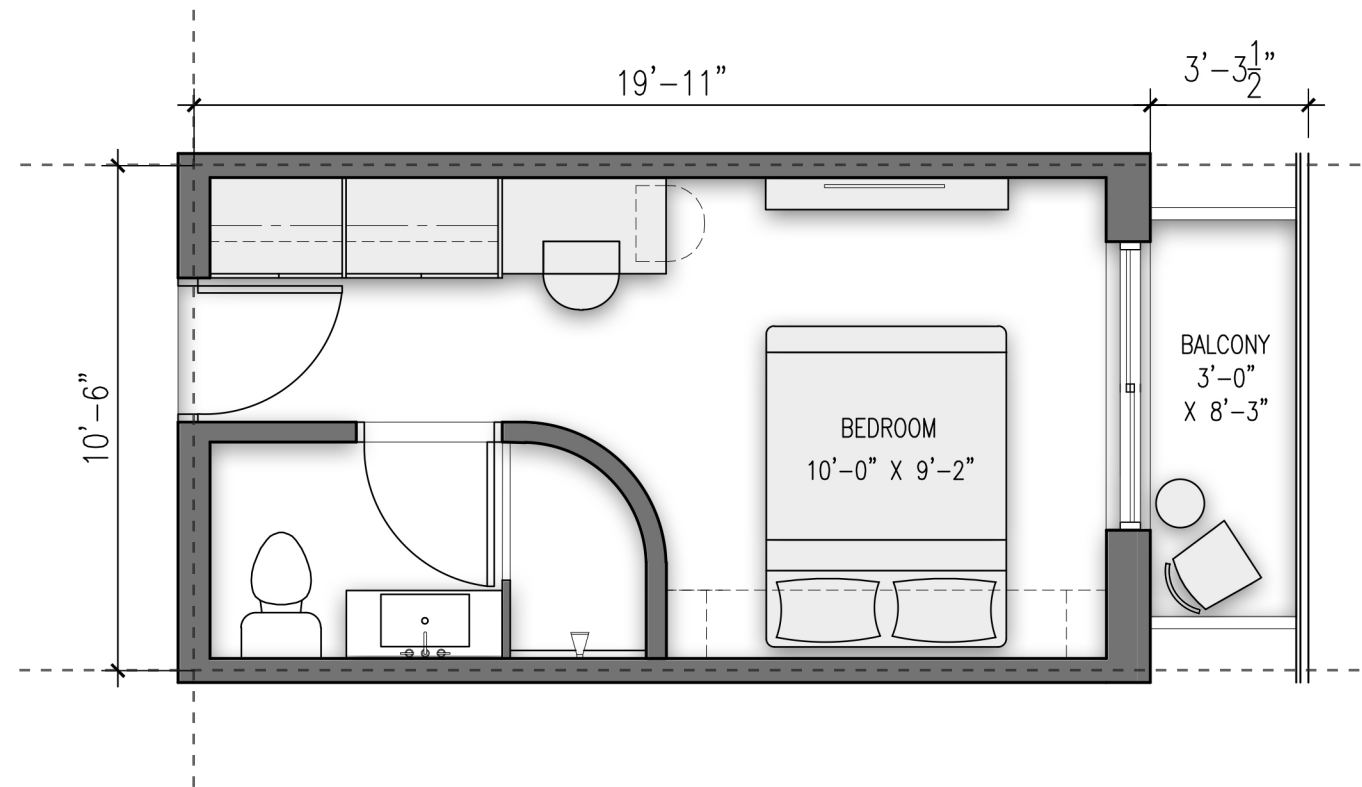
URBIN RETREAT
1234 WASHINGTON AVENUE _ MIAMI BEACH _ FLORIDA



No copies, transmissions, reproductions or electronic manipulation of any portion of these drawings in whole or in part are to be made without the express written permission of Touzet Studio Design & Architecture. All designs indicated in these drawings are property of Touzet Studio Design & Architecture. All copyrights reserved (c) 2020.

PROPOSED MATERIAL PALETTE

BLOW-UP UNIT PLANS



209 SQUARE FEET



URBIN RETREAT
1234 WASHINGTON AVENUE _ MIAMI BEACH _ FLORIDA

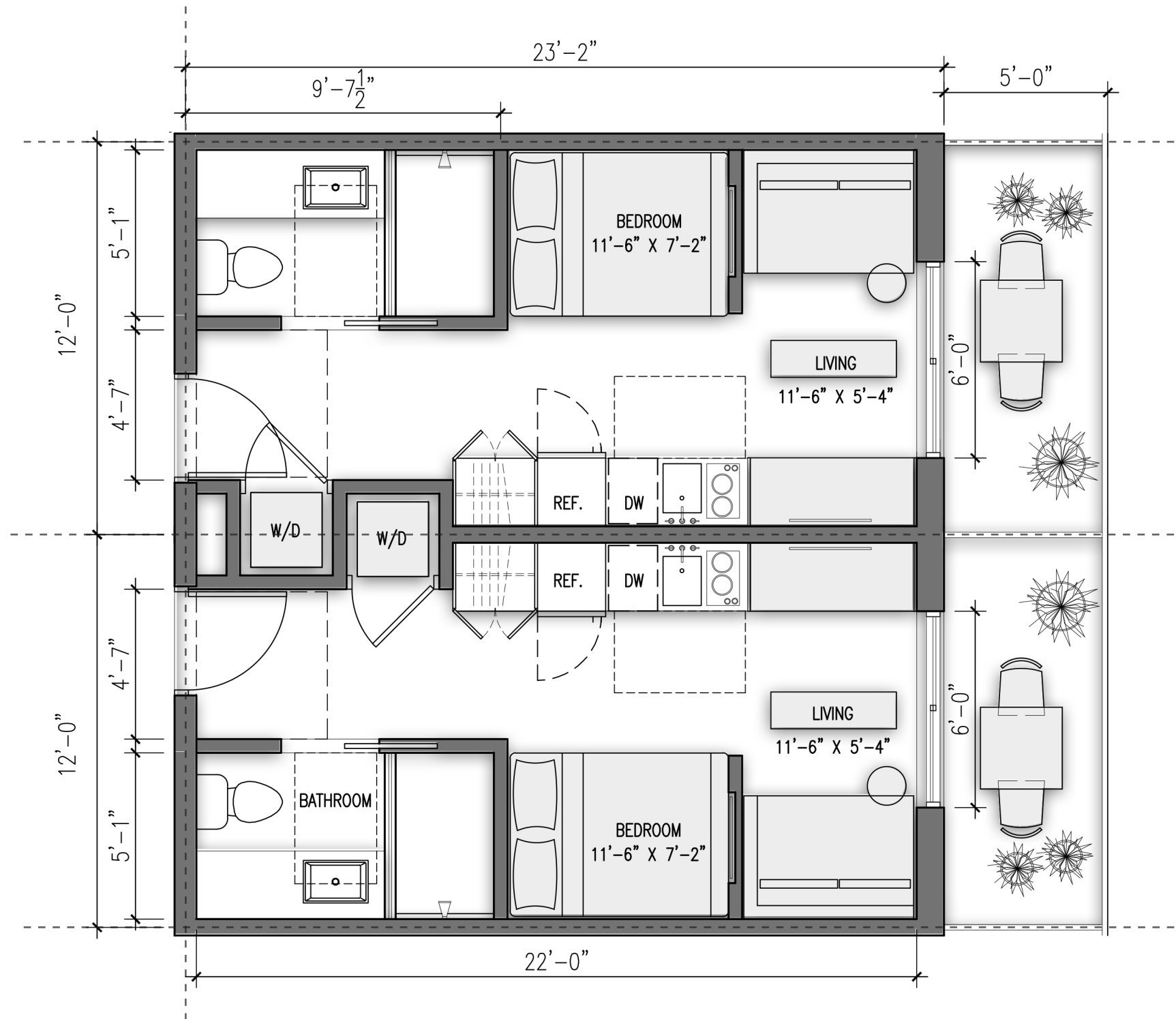


No copies, transmissions, reproductions or electronic manipulation of any portion of these drawings in whole or in part are to be made without the express written permission of Touzet Studio Design & Architecture. All designs indicated in these drawings are property of Touzet Studio Design & Architecture. All copyrights reserved (c) 2020.

TYPICAL HOTEL ROOM

SCALE: 1/4" = 1'-0"

A-39



275 SQUARE FEET



URBIN RETREAT
1234 WASHINGTON AVENUE _ MIAMI BEACH _ FLORIDA

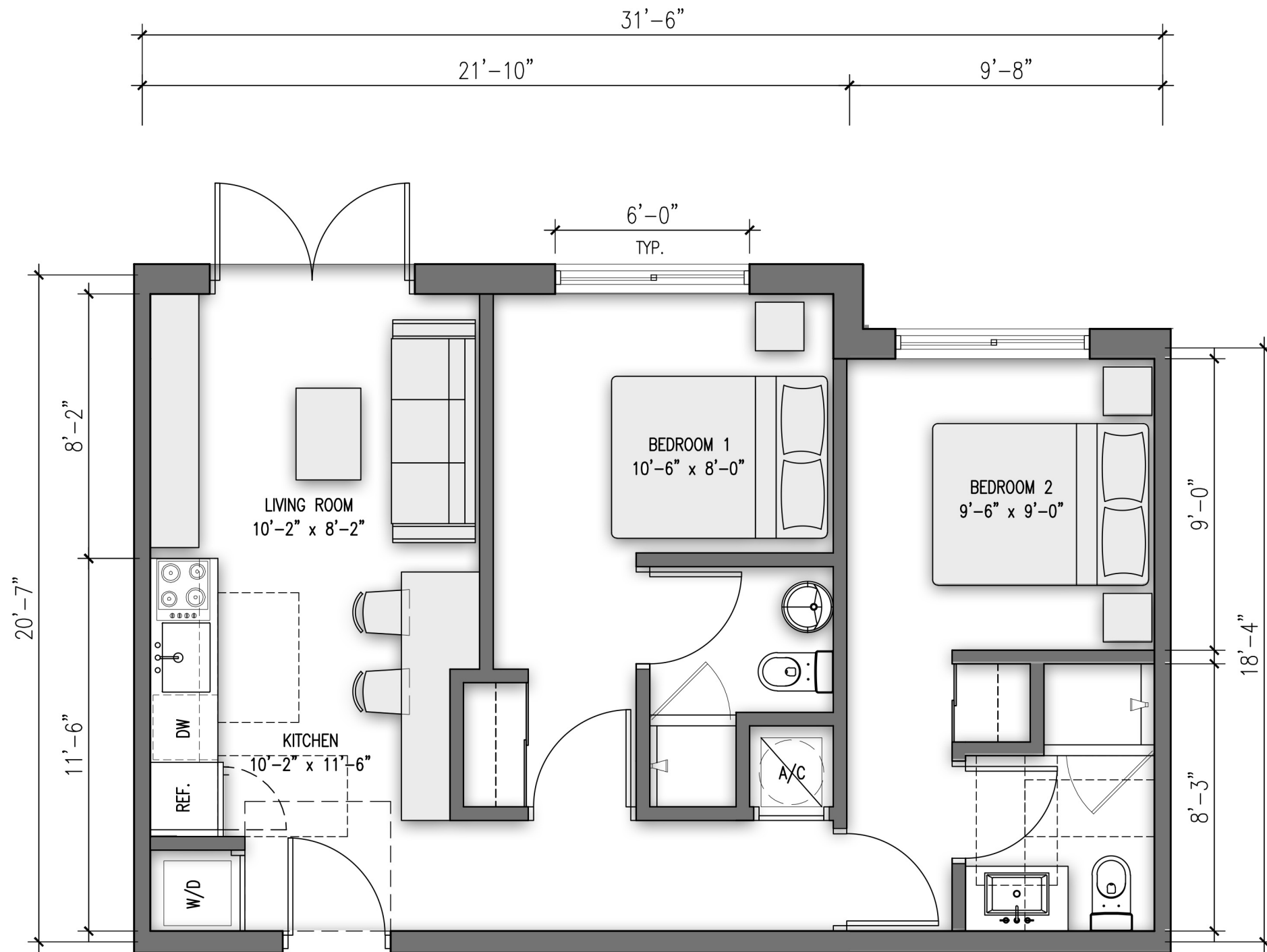


No copies, transmissions, reproductions or electronic manipulation of any portion of these drawings in whole or in part are to be made without the express written permission of Touzet Studio Design & Architecture. All designs indicated in these drawings are property of Touzet Studio Design & Architecture. All copyrights reserved (c) 2020.

CO-LIVING: 1 BEDROOM
SCALE: 1/4" = 1'-0"

A-40

PLANNING BOARD - FINAL SUBMITTAL - 04 FEBRUARY 2020



636 SQUARE FEET



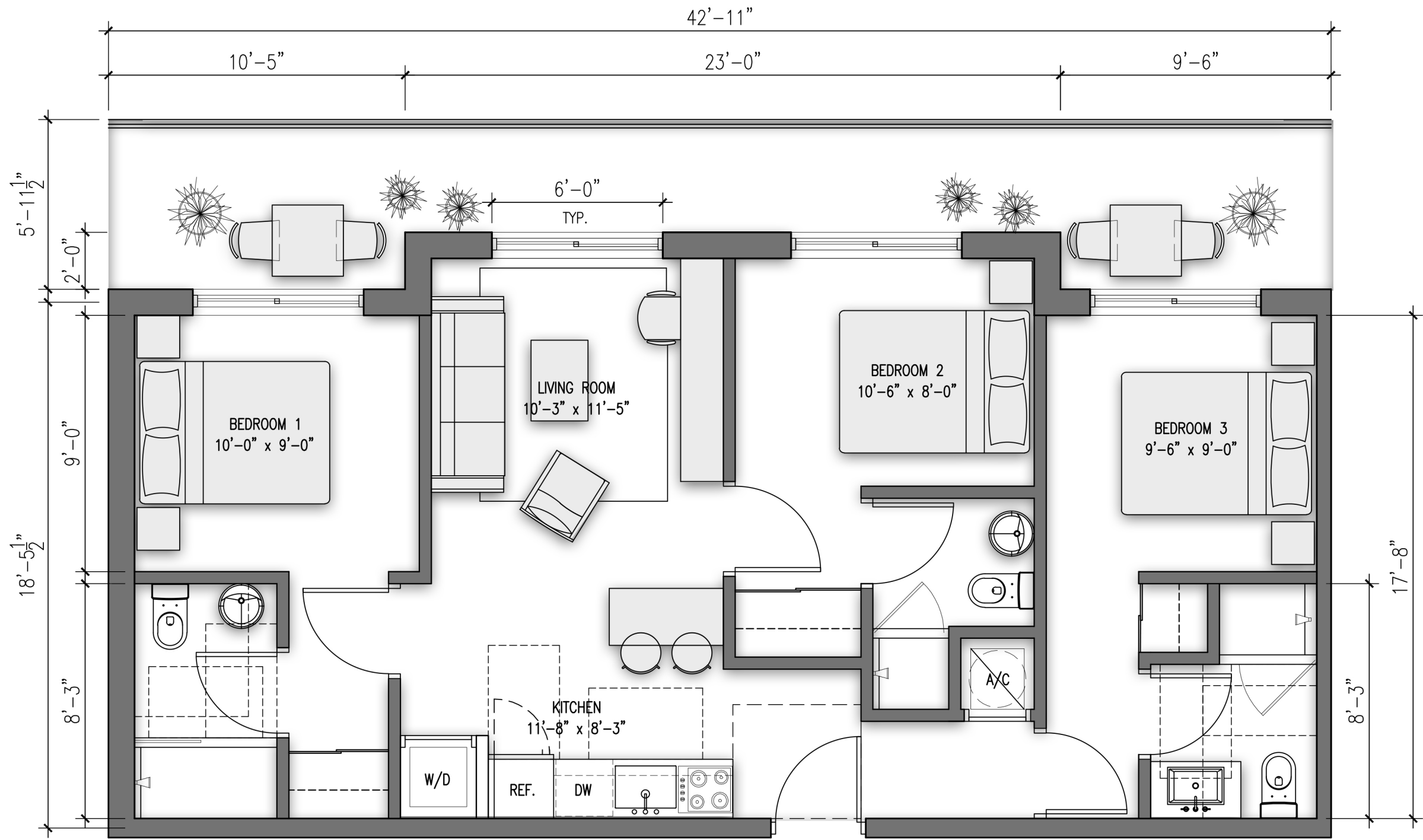
URBIN RETREAT
1234 WASHINGTON AVENUE _ MIAMI BEACH _ FLORIDA



No copies, transmissions, reproductions or electronic manipulation of any portion of these drawings in whole or in part are to be made without the express written permission of Touzet Studio Design & Architecture. All designs indicated in these drawings are property of Touzet Studio Design & Architecture. All copyrights reserved (c) 2020.

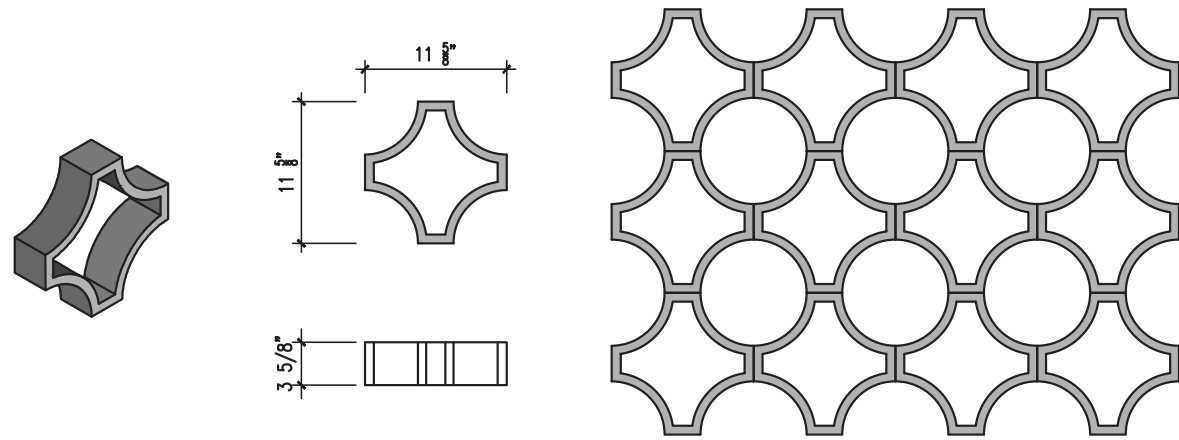
CO-LIVING: 2 BEDROOM
SCALE: 1/4" = 1'-0"

A-40.1



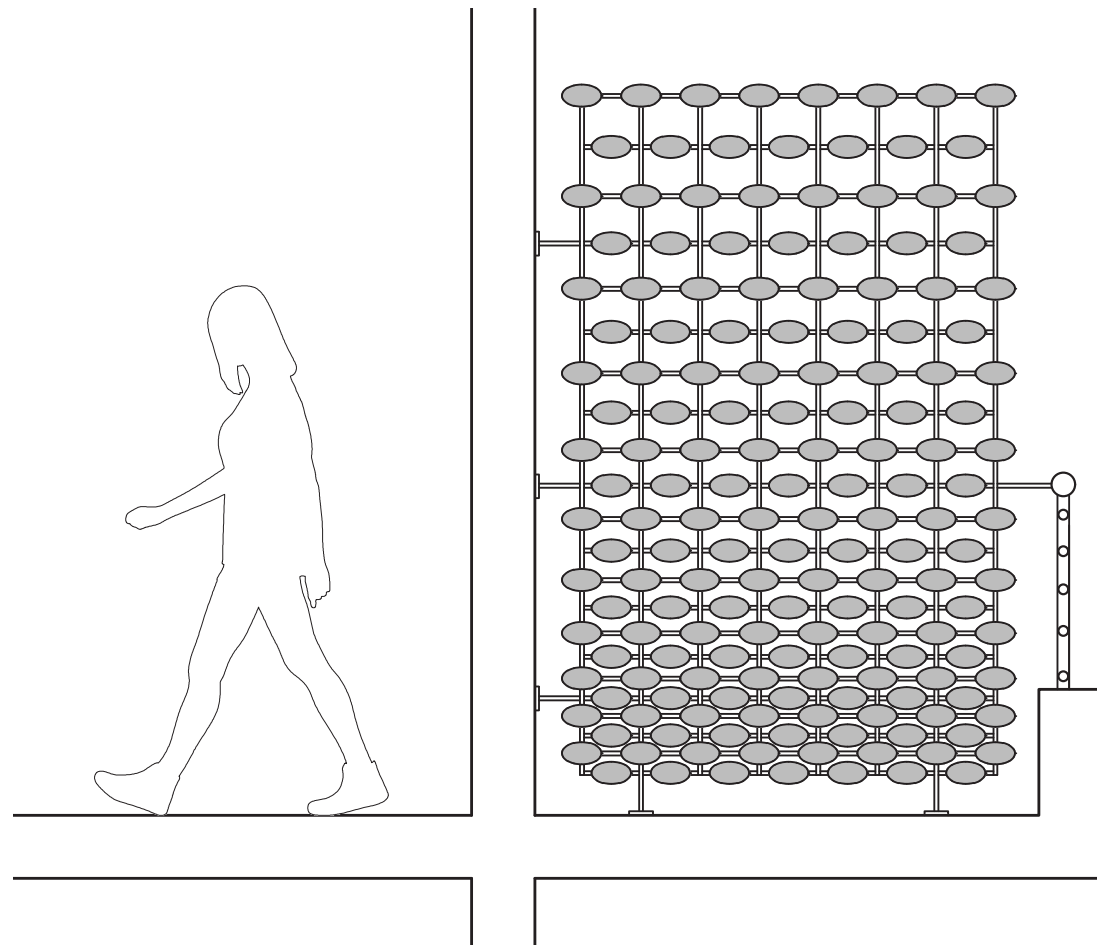
855 SQUARE FEET

DETAILS



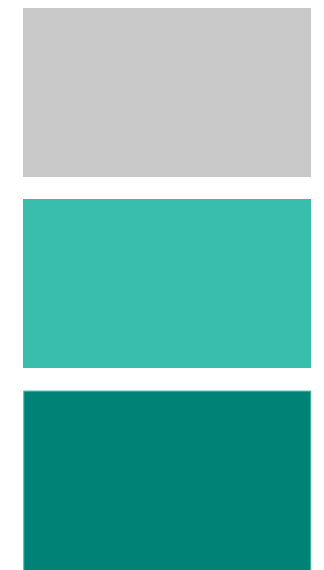
BREEZE BLOCK SCREEN ON GROUND FLOOR

SCALE: 3/4"-1'0"



METAL SCREEN ON WASHINGTON AVENUE BALCONIES

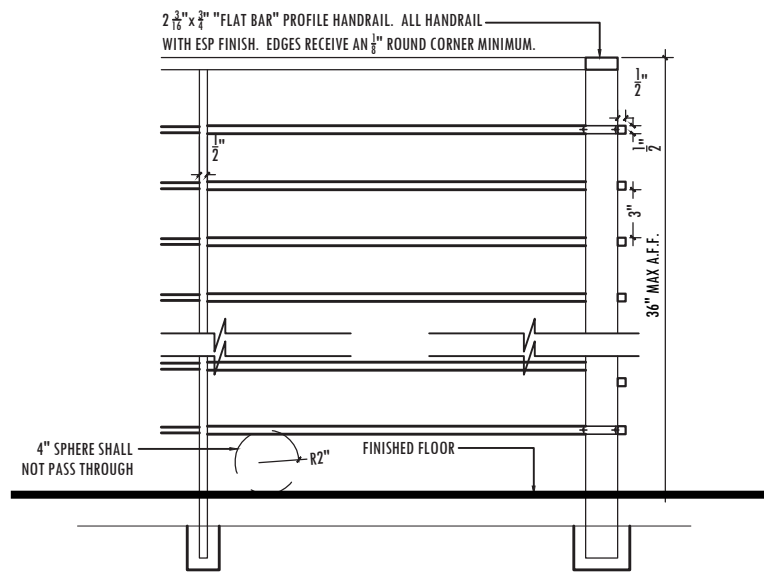
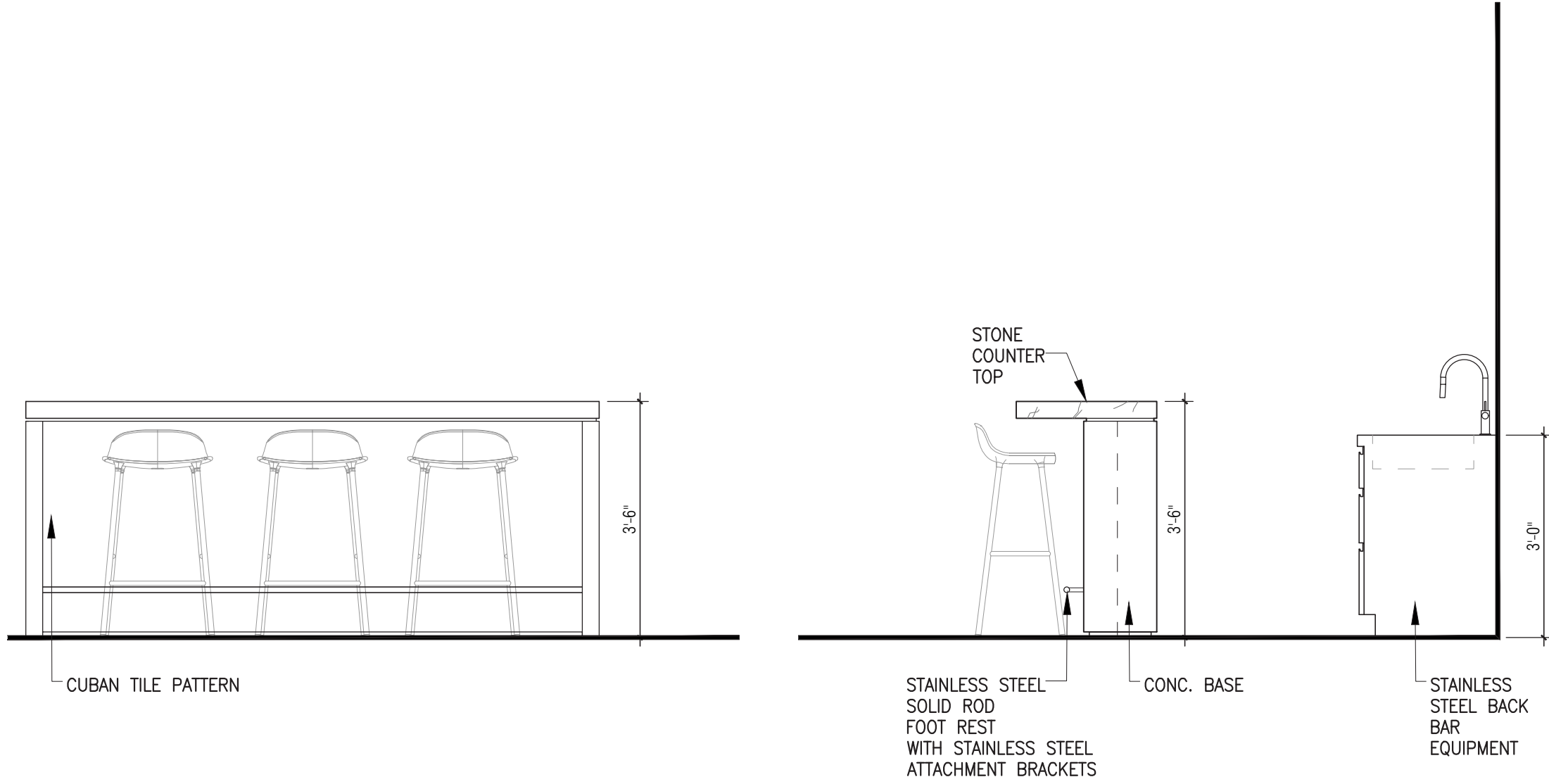
SCALE: 1/2"-1'0"

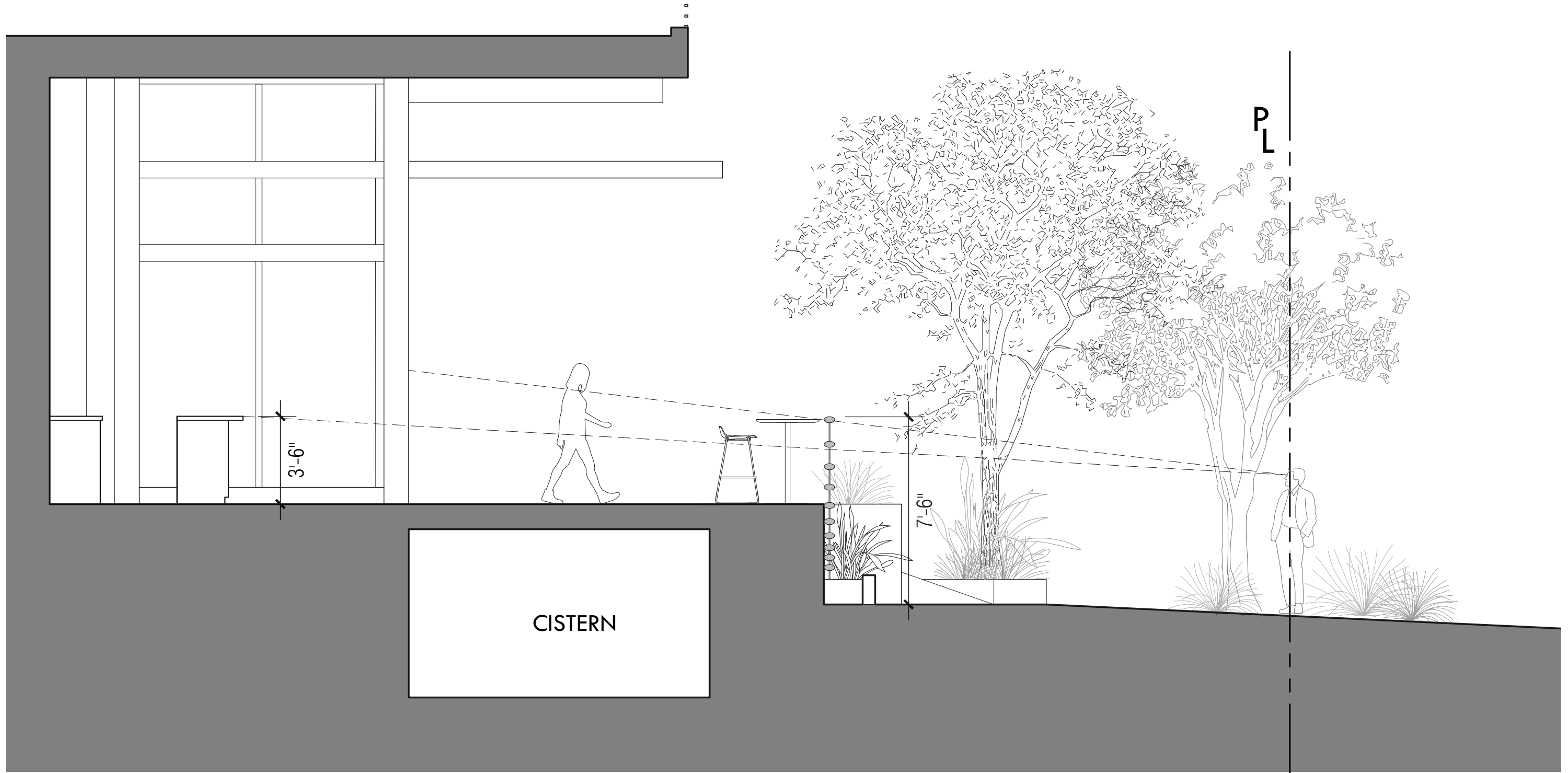


PANTONE COLOR OPTIONS

URBIN RETREAT
1234 WASHINGTON AVENUE _ MIAMI BEACH _ FLORIDA

SCREEN DETAILS
SCALE: N/A





URBIN RETREAT
 1234 WASHINGTON AVENUE _ MIAMI BEACH _ FLORIDA

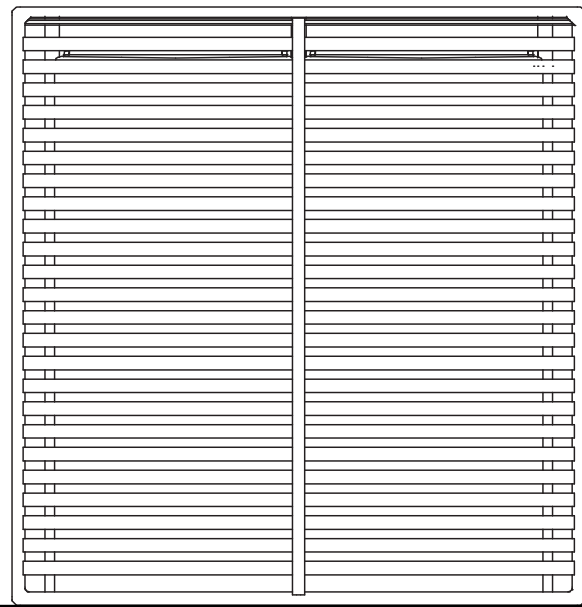
GROUND FLOOR BAR SCREEN - SECTION DETAIL
 SCALE: 1/4"=1'0"



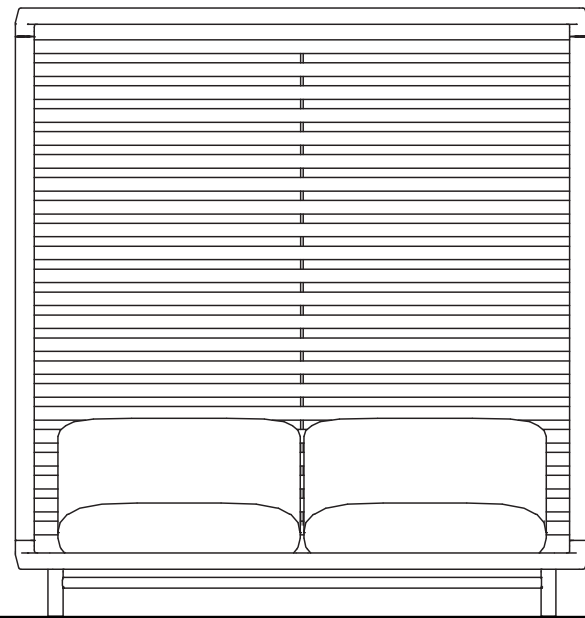
No copies, transmissions, reproductions or electronic manipulation of any portion of these drawings in whole or in part are to be made without the express written permission of Touzet Studio Design & Architecture. All designs indicated in these drawings are property of Touzet Studio Design & Architecture. All copyrights reserved (c) 2020.

A-44.1

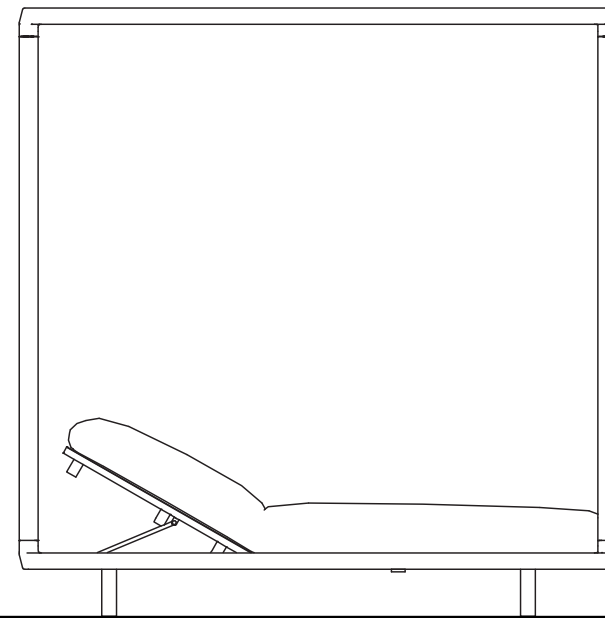
PLANNING BOARD - FINAL SUBMITTAL - 04 FEBRUARY 2020



BACK



FRONT



SIDE



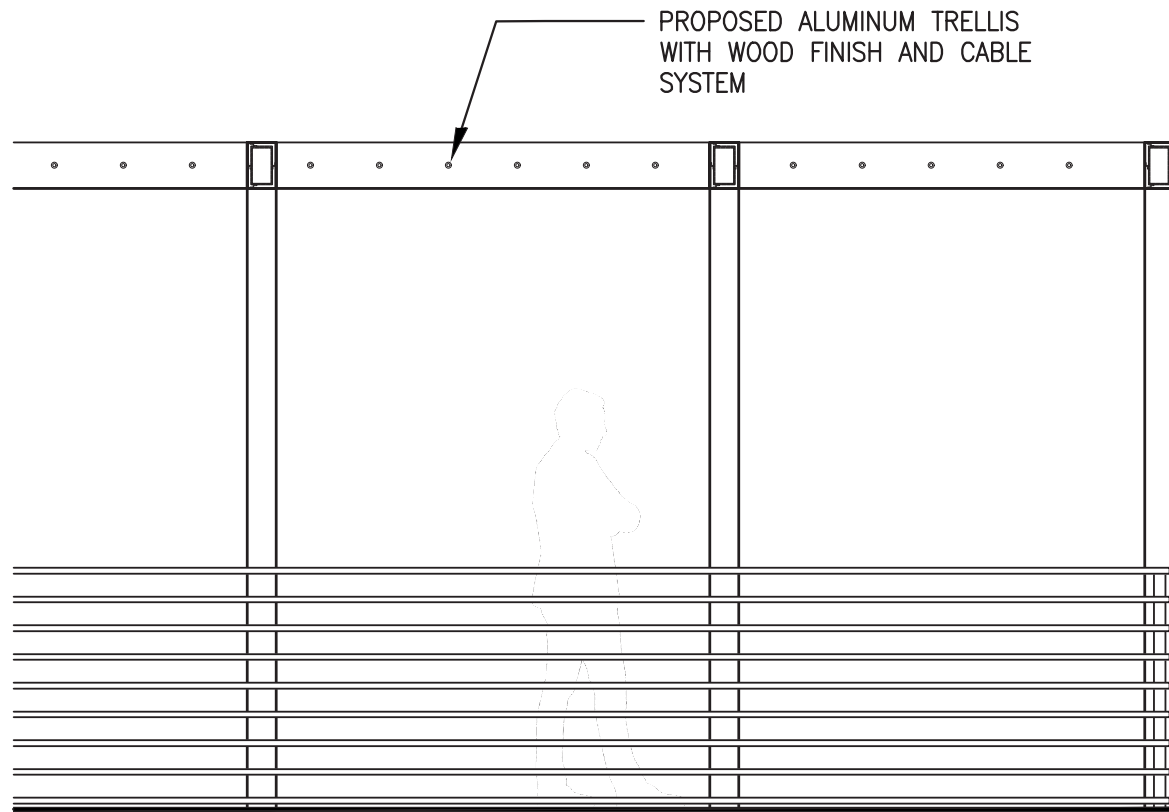
URBIN RETREAT
1234 WASHINGTON AVENUE _ MIAMI BEACH _ FLORIDA



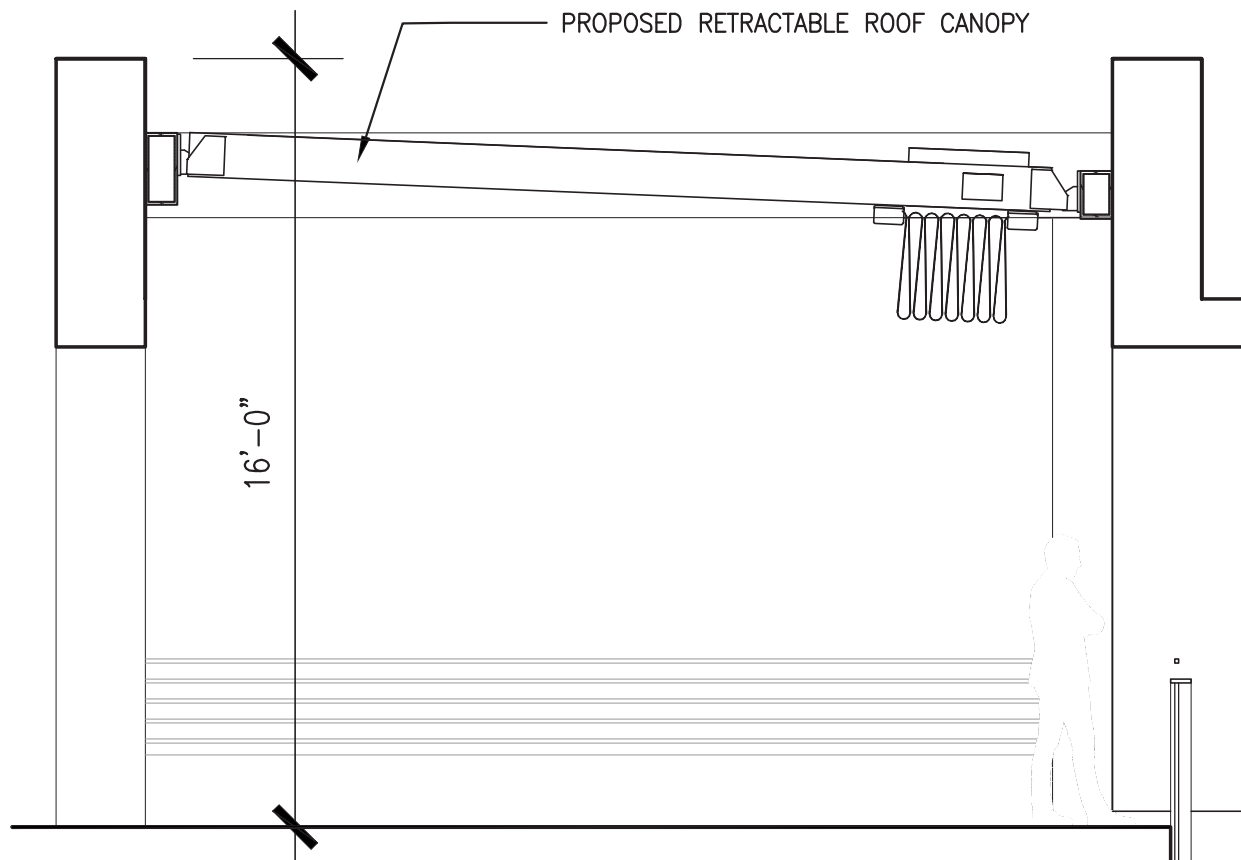
No copies, transmissions, reproductions or electronic manipulation of any portion of these drawings in whole or in part are to be made without the express written permission of Touzet Studio Design & Architecture. All designs indicated in these drawings are property of Touzet Studio Design & Architecture. All copyrights reserved (c) 2020.

ROOFTOP CABANA DETAILS
SCALE: 1/2"=1'0"

A-45



DETAIL OF TRELLIS ROOF ON OUTDOOR TERRACE (SECOND FLOOR)
SCALE: 3/8"-1'0"



DETAIL OF RETRACTABLE CANOPY ON EXISTING BUILDING ROOF
SCALE: 1/4"-1'0"



URBIN RETREAT
1234 WASHINGTON AVENUE _ MIAMI BEACH _ FLORIDA



No copies, transmissions, reproductions or electronic manipulation of any portion of these drawings in whole or in part are to be made without the express written permission of Touzet Studio Design & Architecture. All designs indicated in these drawings are property of Touzet Studio Design & Architecture. All copyrights reserved (c) 2020.

RETRACTABLE CANOPY AND TRELLIS ROOF DETAILS
SCALE: N/A