


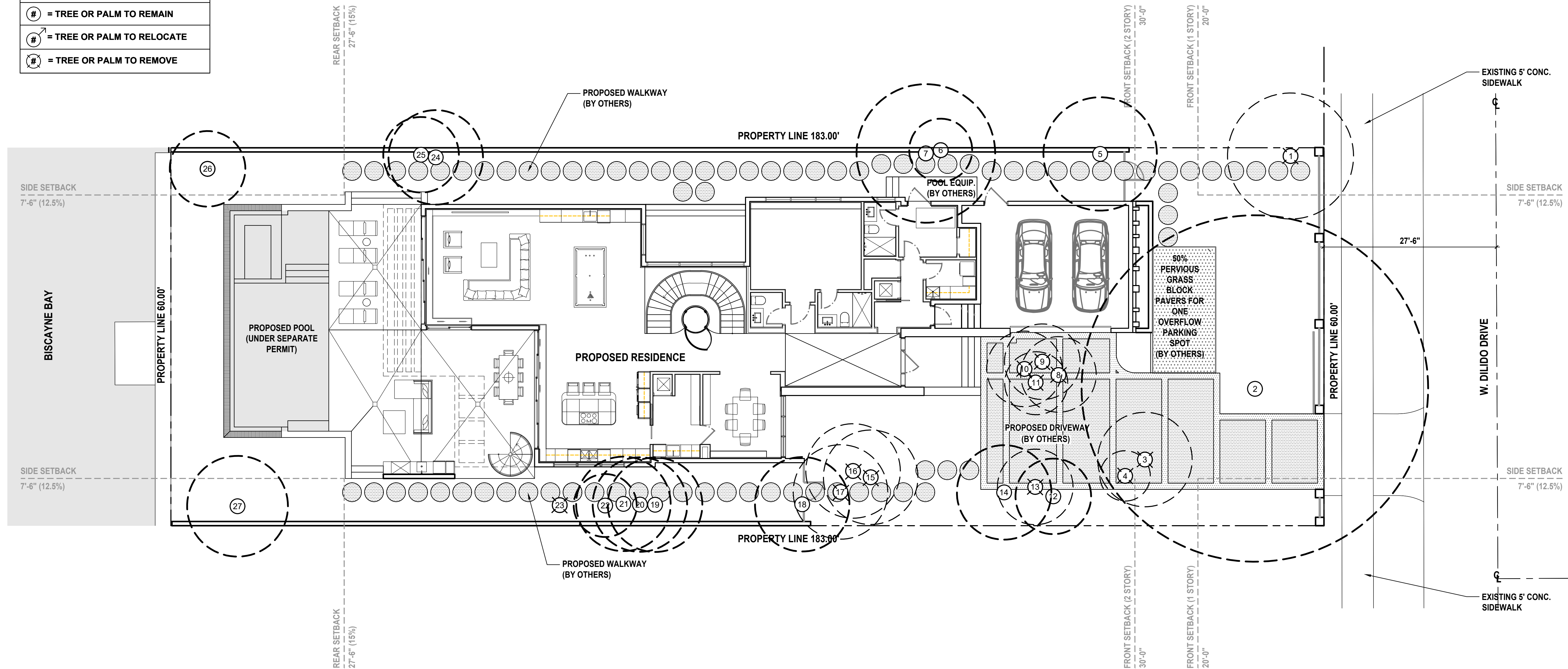




= EXISTING TREE OR PALM

LR-100

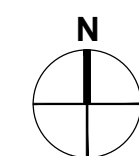
EXISTING TREE & PALM LEGEND	
	= TREE OR PALM TO REMAIN
	= TREE OR PALM TO RELOCATE
	= TREE OR PALM TO REMOVE



EXISTING TREE DISPOSITION SCHEDULE								
SURVEY NO.	COMMON NAME	BOTANICAL NAME	DBH (IN.)	HT (FT.)	SP. (FT.)	T.P.Z (Radius in feet)	CONDITION	STATUS
1	Umbrella Tree	<i>Schefflera actinophylla</i>	35	20	20	N.A.	Poor	Remove
2	Royal Poinciana	<i>Delonix regia</i>	30	35	55	27.5	Fair	Remain
3	Queen Palm	<i>Syagrus romanzoffiana</i>	11	35	15	N.A.	Fair	Remove
4	Pygmy Date Palm	<i>Phoenix roebelenii</i>	3, 4	12	8	N.A.	Poor	Remove
5	Podocarpus	<i>Podocarpus gracilior</i>	14	30	18	10	Good	Remain
6	Corn Plant	<i>Dracaena fragrans</i>	14	25	10	10	Poor	Remain
7	Weeping Fig	<i>Ficus benjamina</i>	9	25	22	11	Good	Remain
8	Chinese Fan Palm	<i>Livistona chinensis</i>	8	35	12	N.A.	Fair	Remove
9	Chinese Fan Palm	<i>Livistona chinensis</i>	9	30	12	N.A.	Fair	Remove
10	Chinese Fan Palm	<i>Livistona chinensis</i>	9.5	30	12	N.A.	Fair	Remove
11	Chinese Fan Palm	<i>Livistona chinensis</i>	15.5	40	10	N.A.	Fair	Remove
12	Chinese Fan Palm	<i>Livistona chinensis</i>	9.5	30	12	10	Fair	Remain
13	Chinese Fan Palm	<i>Livistona chinensis</i>	8.5	30	12	N.A.	Fair	Remove
14	Royal Palm	<i>Roystonea regia</i>	21	50	15	10	Fair	Remain
15	Solitaire Palm	<i>Ptychosperma elegans</i>	Cluster	30	15	N.A.	Fair	Remove
16	Solitaire Palm	<i>Ptychosperma elegans</i>	Cluster	30	15	N.A.	Fair	Remove
17	Solitaire Palm	<i>Ptychosperma elegans</i>	Cluster	30	15	N.A.	Fair	Remove
18	Strawberry Guava	<i>Psidium cattleianum</i>	4.5	20	15	10	Fair	Remain
19	Traveler's Palm	<i>Ravenala madagascariensis</i>	12	25	15	10	Fair	Remain
20	Traveler's Palm	<i>Ravenala madagascariensis</i>	12	25	15	10	Fair	Remain
21	Traveler's Palm	<i>Ravenala madagascariensis</i>	12	25	15	10	Fair	Remain
22	Traveler's Palm	<i>Ravenala madagascariensis</i>	8	25	10	10	Poor	Remain
23	Traveler's Palm	<i>Ravenala madagascariensis</i>	9	15	0	N.A.	Dead	Remove
24	Coconut Palm	<i>Cocos nucifera</i>	12	40	15	10	Fair	Remain
25	Coconut Palm	<i>Cocos nucifera</i>	9.5	35	15	10	Fair	Remain
26	Coconut Palm	<i>Cocos nucifera</i>	10.5	35	15	10	Fair	Remain
27	Coconut Palm	<i>Cocos nucifera</i>	8	23	16	10	Good	Remain

EXISTING TREE DISPOSITION PLAN

SCALE: 1/8" = 1'-0"

[illegible]

2004

ALL DRAWINGS AND WRITTEN MATERIAL APPEARING HEREIN
CONSTITUTE THE ORIGINAL AND UNPUBLISHED WORK OF KOBİ
KARP AIA, AND MAY NOT BE DUPLICATED, USED, OR DISCLOSED
WITHOUT THE EXPRESS WRITTEN CONSENT OF KOBİ KARP
ARCHITECTURE & INTERIOR DESIGN, INC. AIA. (c) 2018

WEST DILIDO RESIDENCE
450 WEST DILIDO DRIVE

450 WEST DILIDO DRIVE
MIAMI BEACH, FL 33139

EXISTING TREE
DISPOSITION PLAN

david o.

landscape
architecture

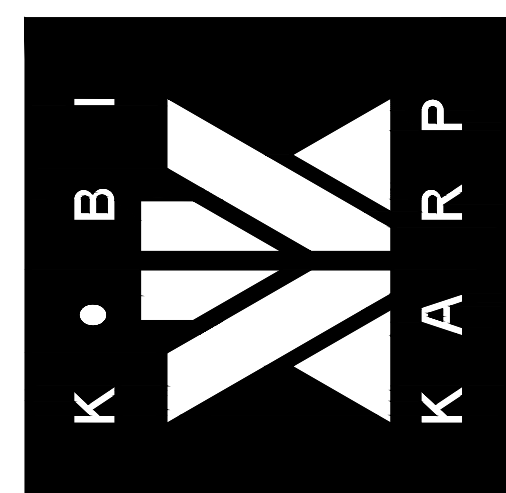
RLA #6666969

ARCHITECTURE
INTERIOR DESIGN
PLANNING

[illegible]

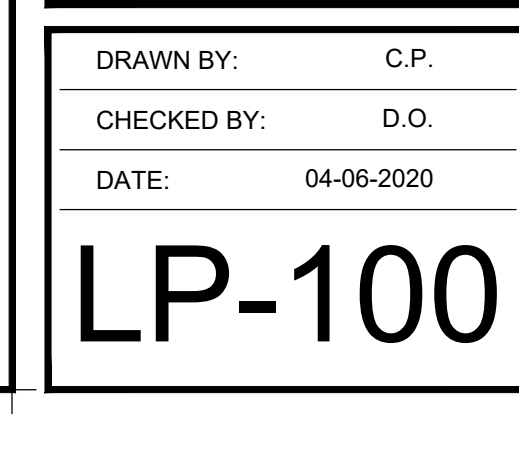
2915 Biscayne Boulevard
Suite 200
Miami, Florida 33137
O: 305.573.1818
F: 305.573.2766

F. 303.373.3760
WWW.KOBIKARP.COM



DRAWN BY:	C.P.
CHECKED BY:	D.O.
DATE:	04-06-2020

LR-200



LP-100

