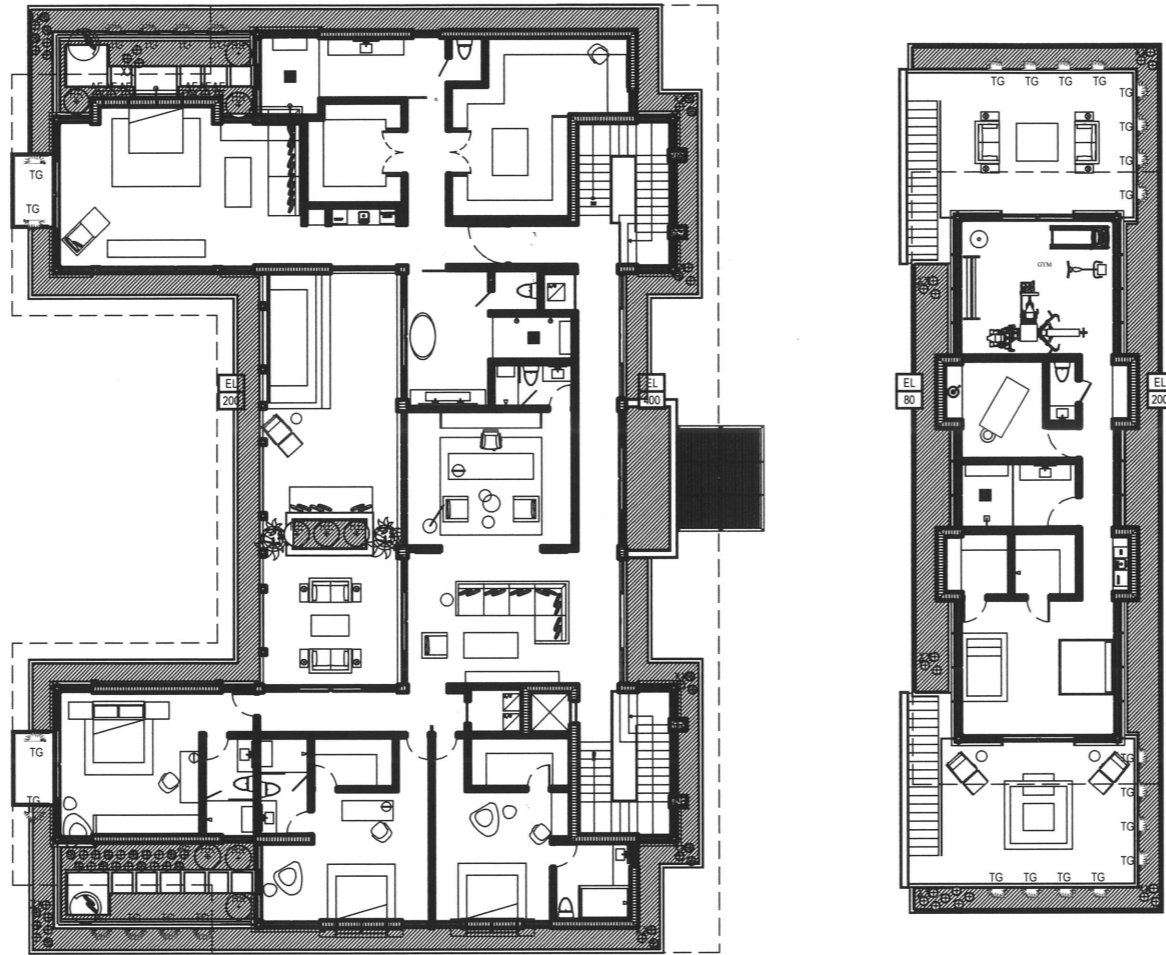


5840 N BAY GARDEN

5840 N BAY ROAD | MIAMI BEACH, FLORIDA 33139

Handwritten signature and date: 03.02.2020



CITY OF MIAMI BEACH

LANDSCAPE LEGEND

INFORMATION PROVIDED TO THE PERMANENTLY AFFIXED TO PLANS

For Reg District RS-3 Lot Area 27,541

Acres .63

Open Space

Required: 2,470

Provided: 9,485

Number of trees required: NA

Number of trees provided: NA

Number of shrubs required: NA

Number of shrubs provided: NA

Number of vines required: NA

Number of vines provided: NA

Number of groundcovers required: NA

Number of groundcovers provided: NA

Number of accents required: NA

Number of accents provided: NA

Number of palms required: NA

Number of palms provided: NA

Number of trees required: NA

Number of trees provided: NA

Number of shrubs required: NA

Number of shrubs provided: NA

Number of vines required: NA

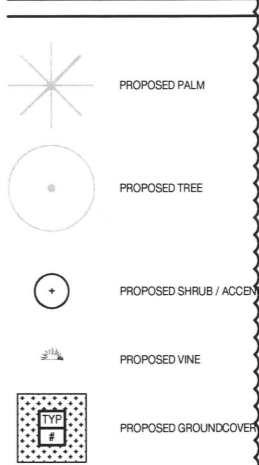
Number of vines provided: NA

PLANTING SCHEDULE

ABR	QUANTITY	BOTANICAL NAME	COMMON NAME	SPECIFICATIONS
LARGE SHRUBS				
SM	24	SURIANA MARITIMA	BAY CEDAR	25 GAL. 6 FT. OA.
CC	12	CAPPARIS GYNOPHALLOPHORA	JAMAICA CAPER	25 GAL. 6 FT. OA.
SHRUBS				
HC	110	CHRYSOBALANUS ICACO 'HORIZONTAL'	HORIZONTAL COCOPLUM	7 GAL. 24 IN. x 24 IN.
CE	138	CONOCARPUS ERECTUS	GREEN BUTTWOOD	15 GAL. FULL BUSH 6 FT. OA.
SP	80	SPARTINA PATENS	SALTMADOW CHORDGRASS	3 GAL.
SS	15	SERENOA REPENS 'CINEREA'	SILVER SAW PALMETTO	25 GAL.
ACCENTS				
AE	280	ASPIDISTRIA ELATIOR	CAST IRON PLAN	3 GAL.
HR	28	HELICONIA ROSTRATA	LOBSTER CLAW	15 GAL. 6 FT. OA.
PM	14	PHILODENDRON MCDOWELL	SAME	7 GAL.
XX	100	ALCANTAREA ODORATA	SILVER BROMELIAD	7 GAL.
GROUNDCOVERS				
EL	2,180	ERNODEA LITTORALIS	GOLDEN CREEPER	1 GAL. 12 IN. OC.
VINES				
TG	42	THUNBERGIA GRANDIFLORA	SAME	3 GAL. TRELLIS

CONTRACTOR TO PROVIDE \$2000 MISCELLANEOUS WHOLESALE PLANT ALLOWANCE. LANDSCAPE ARCHITECT TO TAG PLANTS AT NURSERY

PLANTING LEGEND

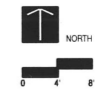


SEAL (S TYLER NIELSEN - LA6667067)

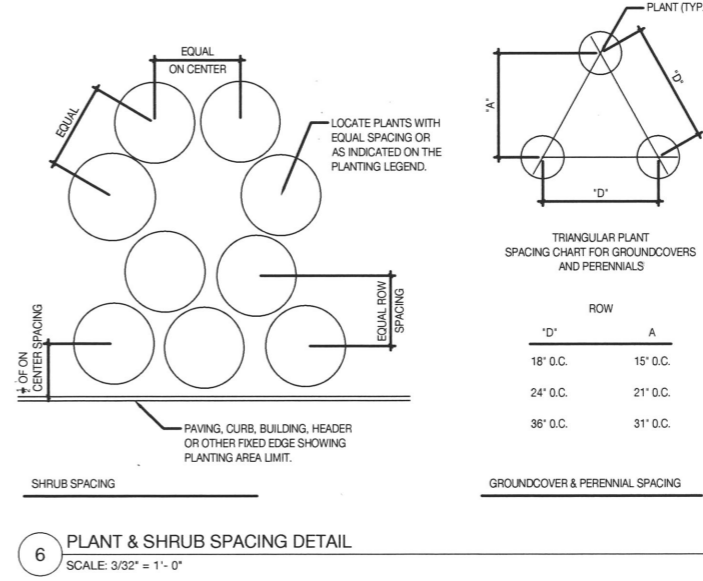
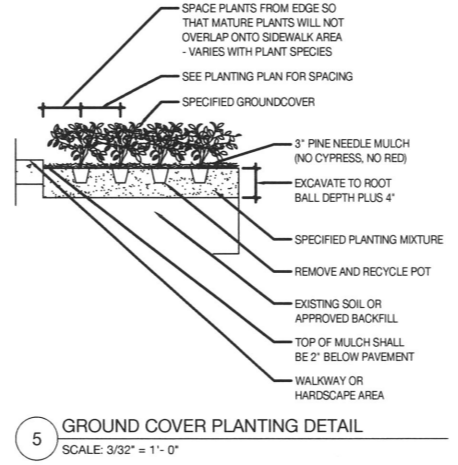
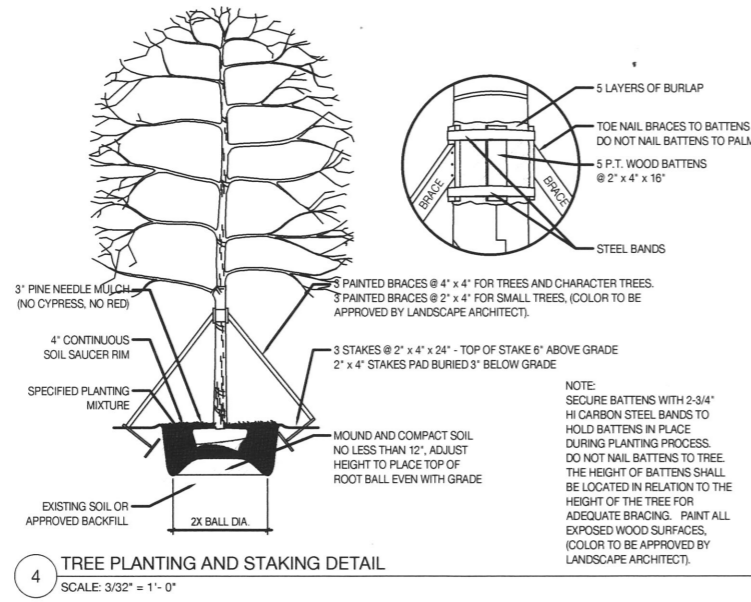
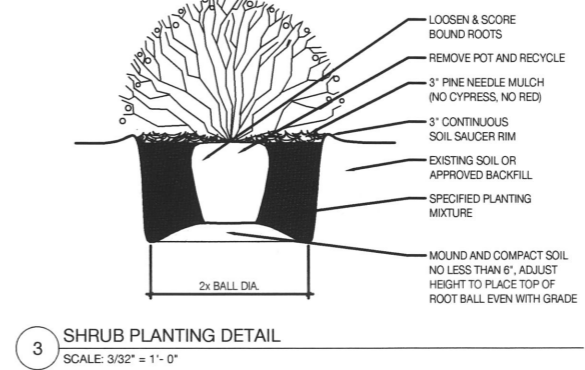
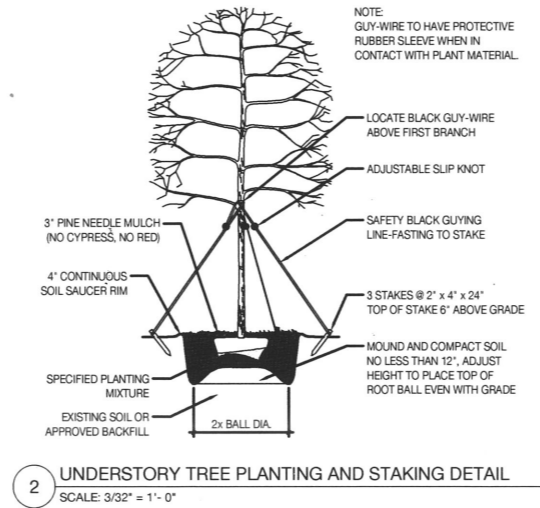
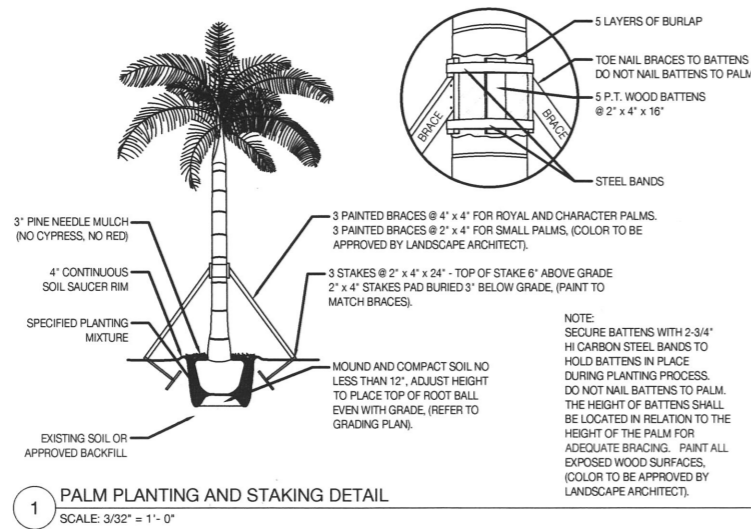


UNDERSTORY PLANTING PLAN

DATE: 02.17.2020
ISSUE: MB DRG REVIEW
03.05.2020 REVISION 01



L703



5840 N BAY GARDEN
5840 N BAY ROAD | MIAMI BEACH, FLORIDA 33139

Signature 03.05.2020

SEAL (S TYLER NIELSEN - LA6667067)



PLANTING DETAILS
DATE: 02.17.2020
03.05.2020
ISSUE: MB DRB REVIEW
REVISION 01

L704

IRRIGATION NOTES (FOTABLE)

- 1.) Some pipe lines are drawn off set for clarity. Install all irrigation lines in landscaped areas.
- 2.) Refer to the landscape plans when trenching to avoid tree root balls to install heads at appropriate locations.
- 3.) Adjust all nozzles to reduce overthrow on paving & walls. Throttle all irrigation control valves as required to prevent fogging. Set controller run times to match plant water needs and soil conditions.
- 4.) Install risers 18" from walls or buildings, and 24" from paved surfaces. Paint all risers and supports flat black.
- 5.) Install pop-up heads 18" from walls, 6" from walks, decks and curbs, 6 feet from curbless roads, and 30" from the end of parking spaces.
- 6.) Set top of pop-up head caps 1" above finished grade prior to sod or mulch installation.
- 7.) Refer to utility plans prior to trenching. The irrigation installer shall be responsible for the repair of any damage to utilities caused by their work during the project.
- 8.) All work shall be guaranteed for one year from the date of final acceptance against all defects in equipment and workmanship.
- 9.) Electric power supply for the irrigation controller shall be brought to a junction box at the controller location by the building electrical contractor. Irrigation installer to provide electrical permits and licensed electrician to connect the irrigation controller equipment to the power supply.
- 10.) Irrigation water connections and system construction shall comply with the requirements of local codes for irrigation installation and connections to the water supply.
- 11.) Irrigation installer to acquire all permits and utilize all safety precautions required to work in row of roadway.
- 12.) Sixty (60) psi minimum static water pressure is required for the efficient operation of the irrigation system as designed. Verify the minimum static water pressure is available at the project site prior to beginning the irrigation installation. Notify the landscape architect in writing if the minimum static water pressure or water volume is not available.
- 13.) At the end of parking spaces place heads in line with parking stripes or 2.5 feet from back of curb. (typical)
- 14.) Prior to starting the works inspect the site and locate all existing irrigation pipes, wires and equipment. Provide labor and materials to repair any damaged existing irrigation. Provide "lifeline" pipes and wires to keep adjacent irrigation zones operational throught the works.
- 15.) The irrigation mainline is drawn offset for graphic clarity. do not scale the mainline from the drawing for installation. Layout the irrigation mainline route in the field to avoid proposed and existing tree root zones and utilities.

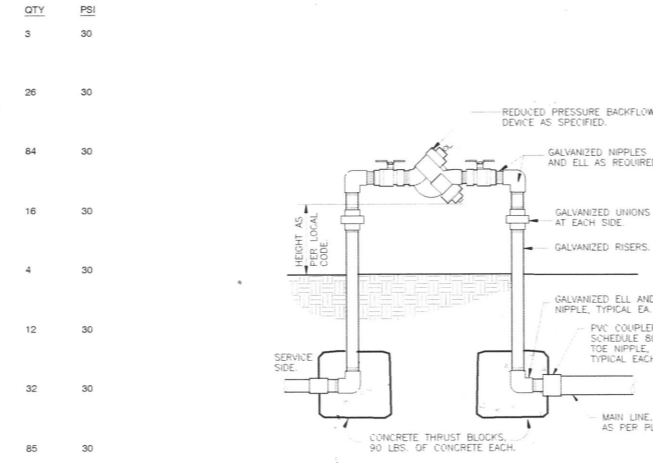
IRRIGATION SCHEDULE

SYMBOL	MANUFACTURER/MODEL/DESCRIPTION	QTY	PSI
	Rain Bird 1806-U-PRS SQ Series Turf Spray 6.0" Pop-Up Sprinkler with Co-Molded Wiper Seal. Side and Bottom Inlet. 1/2" NPT Female Threaded Inlet. Pressure Regulating.	3	30
	Rain Bird 1806-U-PRS 15 Strip Series Turf Spray 6.0" Pop-Up Sprinkler with Co-Molded Wiper Seal. Side and Bottom Inlet. 1/2" NPT Female Threaded Inlet. Pressure Regulating.	26	30
	Rain Bird 1806-U-PRS U8 Series Turf Spray 6.0" Pop-Up Sprinkler with Co-Molded Wiper Seal. Side and Bottom Inlet. 1/2" NPT Female Threaded Inlet. Pressure Regulating.	84	30
	Rain Bird 1806-U-PRS U10 Series Turf Spray 6.0" Pop-Up Sprinkler with Co-Molded Wiper Seal. Side and Bottom Inlet. 1/2" NPT Female Threaded Inlet. Pressure Regulating.	16	30
	Rain Bird 1806-U-PRS U12 Series Turf Spray 6.0" Pop-Up Sprinkler with Co-Molded Wiper Seal. Side and Bottom Inlet. 1/2" NPT Female Threaded Inlet. Pressure Regulating.	4	30
	Rain Bird 1806-U-PRS U15 Series Turf Spray 6.0" Pop-Up Sprinkler with Co-Molded Wiper Seal. Side and Bottom Inlet. 1/2" NPT Female Threaded Inlet. Pressure Regulating.	12	30
	Rain Bird 1806-U-PRS HE-VAN Series Turf Spray 6.0" Pop-Up Sprinkler with Co-Molded Wiper Seal. Side and Bottom Inlet. 1/2" NPT Female Threaded Inlet. Pressure Regulating.	32	30
	Rain Bird 1812-PRS-U 15 Strip Series Shrub Spray, 12.0" Pop-Up Sprinkler with Co-Molded Wiper Seal. Side and Bottom Inlet. 1/2" NPT Female Threaded Inlet. With Pressure Regulating Device.	85	30
	Rain Bird 1812-PRS-U 18 Series Shrub Spray, 12.0" Pop-Up Sprinkler with Co-Molded Wiper Seal. Side and Bottom Inlet. 1/2" NPT Female Threaded Inlet. With Pressure Regulating Device.	160	30
	Rain Bird 1812-PRS-U 10 Series Shrub Spray, 12.0" Pop-Up Sprinkler with Co-Molded Wiper Seal. Side and Bottom Inlet. 1/2" NPT Female Threaded Inlet. With Pressure Regulating Device.	24	30
	Rain Bird 1812-PRS-U 12 Series Shrub Spray, 12.0" Pop-Up Sprinkler with Co-Molded Wiper Seal. Side and Bottom Inlet. 1/2" NPT Female Threaded Inlet. With Pressure Regulating Device.	8	30
	Rain Bird 1812-PRS-U 15 Series Shrub Spray, 12.0" Pop-Up Sprinkler with Co-Molded Wiper Seal. Side and Bottom Inlet. 1/2" NPT Female Threaded Inlet. With Pressure Regulating Device.	2	30
	Rain Bird 1812-PRS-U HE-VAN Series Shrub Spray, 12.0" Pop-Up Sprinkler with Co-Molded Wiper Seal. Side and Bottom Inlet. 1/2" NPT Female Threaded Inlet. With Pressure Regulating Device.	33	30
	Rain Bird 1800-1400 Flood 1401 Fixed flow rate (0.25-2.0 GPM), full circle bubbler, 1/2" FPT.	92	40

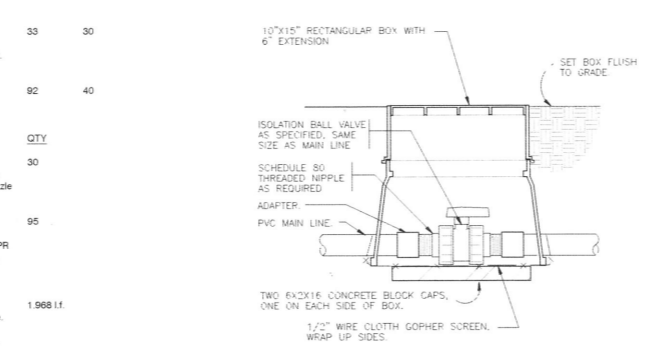
SYMBOL	MANUFACTURER/MODEL/DESCRIPTION	QTY
	Rain Bird SQ ADP-12 Square Spray Square pattern nozzles with pressure compensation. Nozzle throws 2.5' to 4'. 3 Models: Quarter, Half, and Full. SQ Nozzle Adapter With 12.0" PolyFlex Riser.	30
	Rain Bird XP-1200X Drip micro-spray Low-Volume, Low-Pressure, Drip 12.0" Pop-Up Spray, 1/4" Barbed Inlet. Nozzle Options: SQ Series, 5 MPR Series, 8 MPR Series, and 5 Series Plastic Bubbler. *Note* Always install a Pressure Compensating Screen w/Plastic Bubbler 5 Series.	95
	Area to Receive Dripline XFD On-Surface Pressure Compensating Landscape Dripline 0.9 GPH emitters at 12" O.C. Dripline laterals spaced at 12" apart, with emitters offset for triangular pattern. UV Resistant. Specify XF insert fittings.	1,968 l.f.

SYMBOL	MANUFACTURER/MODEL/DESCRIPTION	QTY
	HIT (Rain-Pro) BVS PVC Ball Valve, Slip Socket Connection, 1/2" (1.27cm) - 4" (10.16cm), same size as pipe.	4
	Watts LF909M1 1-1/2' Lead Free Reduced Pressure Backflow Preventer.	2
	Rain Bird ESPBUXME with (02) ESPLXMSM12 32 Station Commercial Controller. Mounted on a Plastic Wall Mount.	2
	Rain Bird RSD-BEX Rain Sensor, with metal latching bracket, extension wire.	2
	Water Meter 1-1/2'	2
	Irrigation Mainline: PVC Class 200 SDR 21	1,032 l.f.
	Pipe Sleeve: PVC Class 200 SDR 21	156.6 l.f.

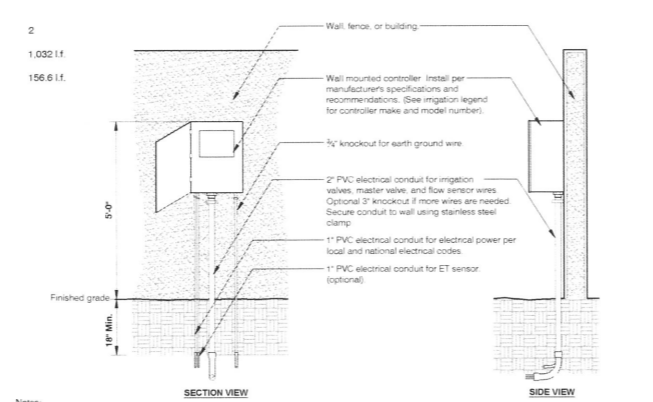
SYMBOL	MANUFACTURER/MODEL/DESCRIPTION	QTY
	Valve Number	
	Valve Flow	
	Valve Size	



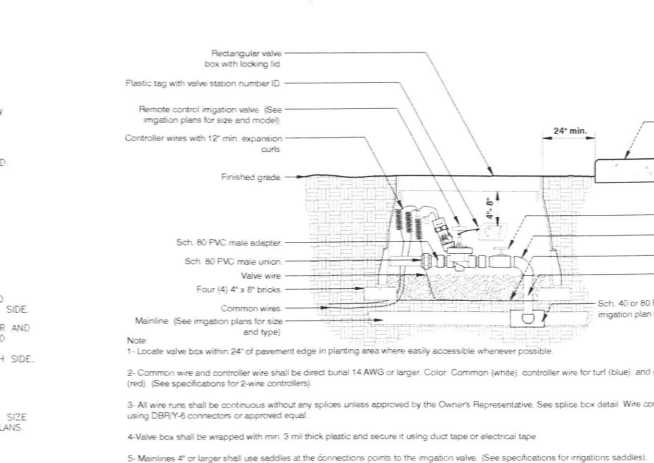
1 REDUCED PRESSURE BACKFLOW DEVICE
1 1/2" = 1'-0"



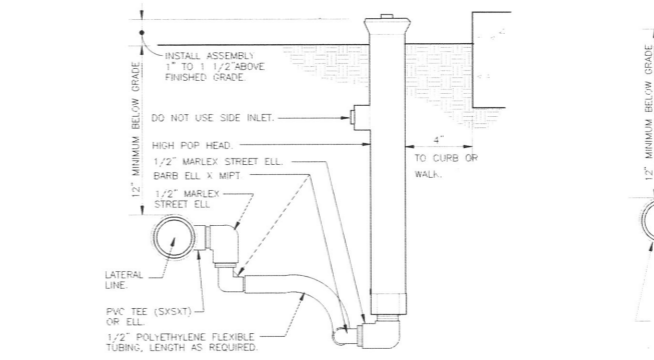
3 TRUE UNION BALL ISOLATION VALVE
1 1/2" = 1'-0"



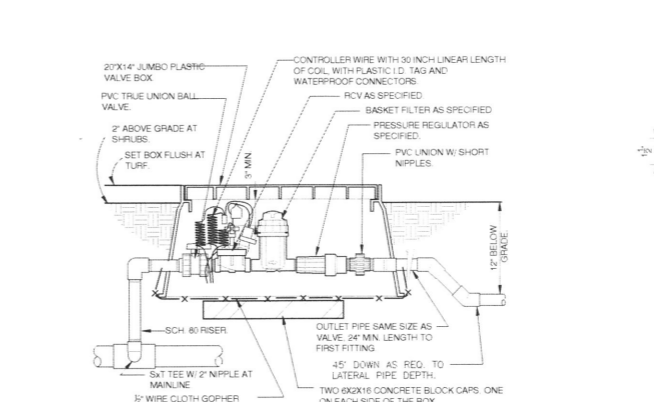
6 WALL MOUNTED CONTROLLER
1 1/2" = 1'-0"



2 REMOTE CONTROL IRRIGATION VALVE
1 1/2" = 1'-0"



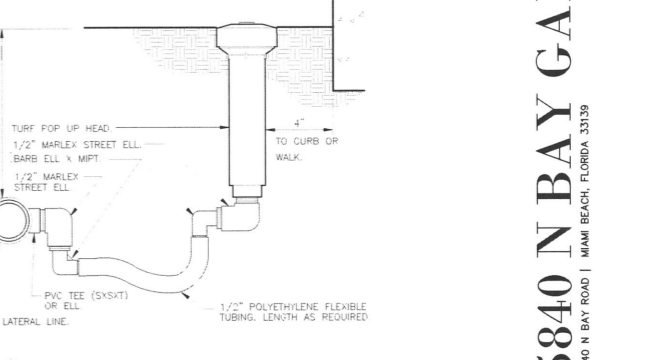
4 SHRUB SPRAY HIGHPOP W/FLEX ASSEMBLY
3\"/>



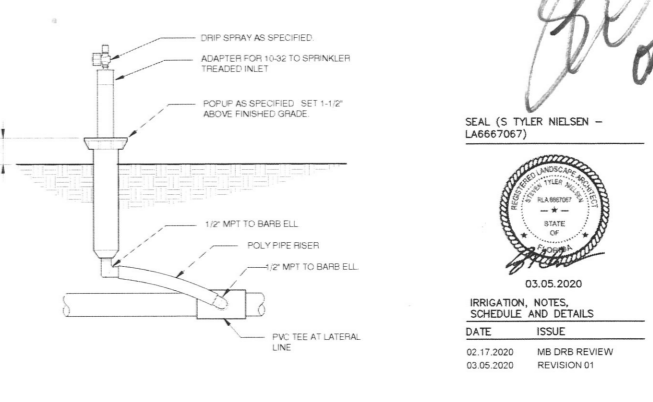
7 1" DRIP VALVE W/BASKET FILTER
1 1/2" = 1'-0"



5 TURF SPRAY FLEX ASSEMBLY
3\"/>



5 TURF SPRAY FLEX ASSEMBLY
3\"/>



8 DRIFT SPRAY ON POPUP W/PVC PIPE
3\"/>



5840 N BAY GARDEN

5840 N BAY ROAD | MIAMI BEACH, FLORIDA 33139

SEAL (S TYLER NIELSEN - LA6667067)

03.05.2020
IRRIGATION, NOTES, SCHEDULE AND DETAILS
DATE ISSUE
02.17.2020 MB DRB REVIEW
03.05.2020 REVISION 01

L800

COPYRIGHT NIELSEN LANDSCAPE ARCHITECTS, LLC

5840 N BAY GARDEN

5840 N BAY ROAD | MIAMI BEACH, FLORIDA 33139

Handwritten signature and date: 03.05.2020

SEAL (S. TYLER NIELSEN -
LA6667067)

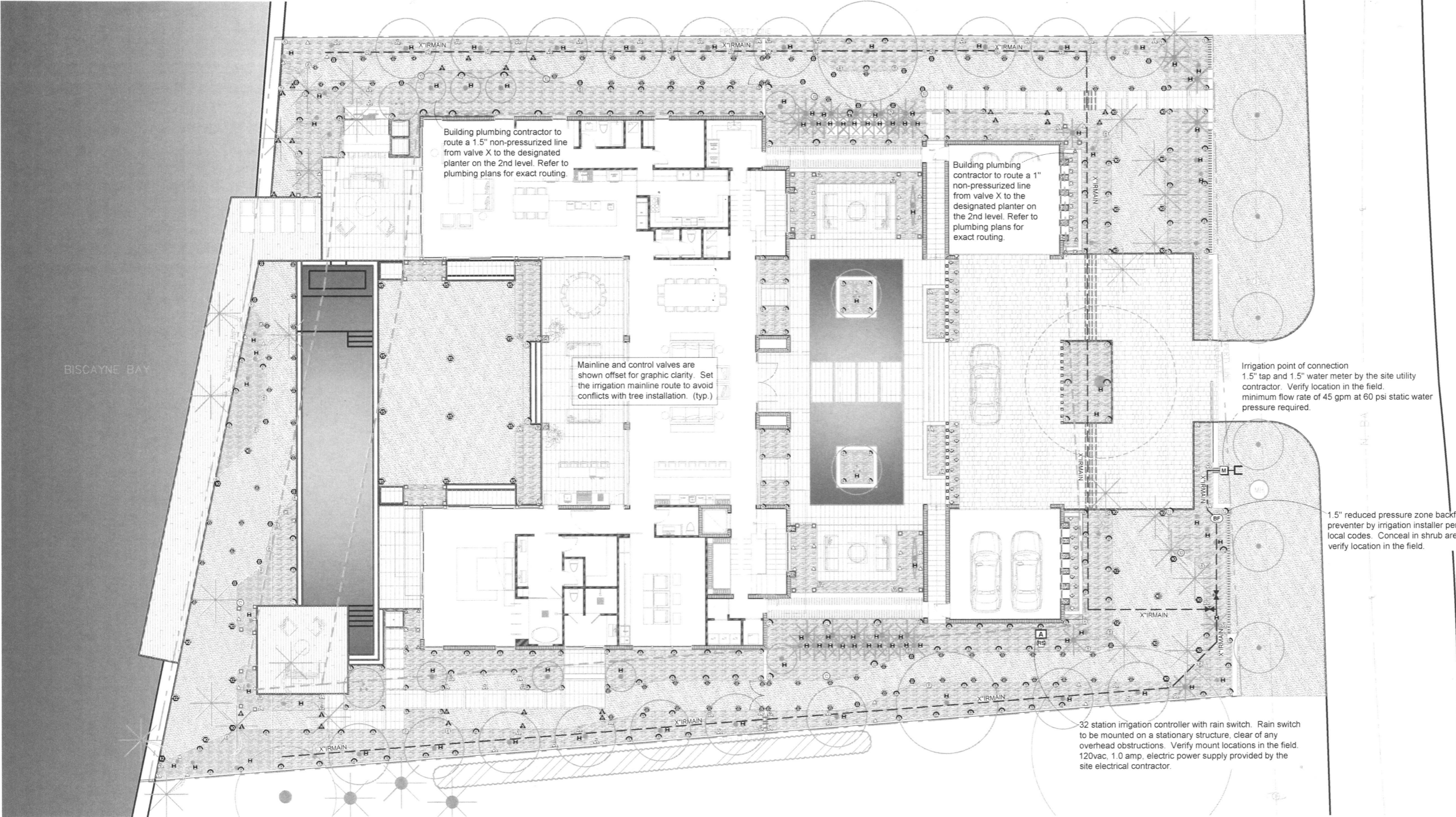


03.05.2020

GROUND LEVEL IRRIGATION PLAN	
DATE	ISSUE
02.17.2020	MB DRB REVIEW
03.05.2020	REVISION 01



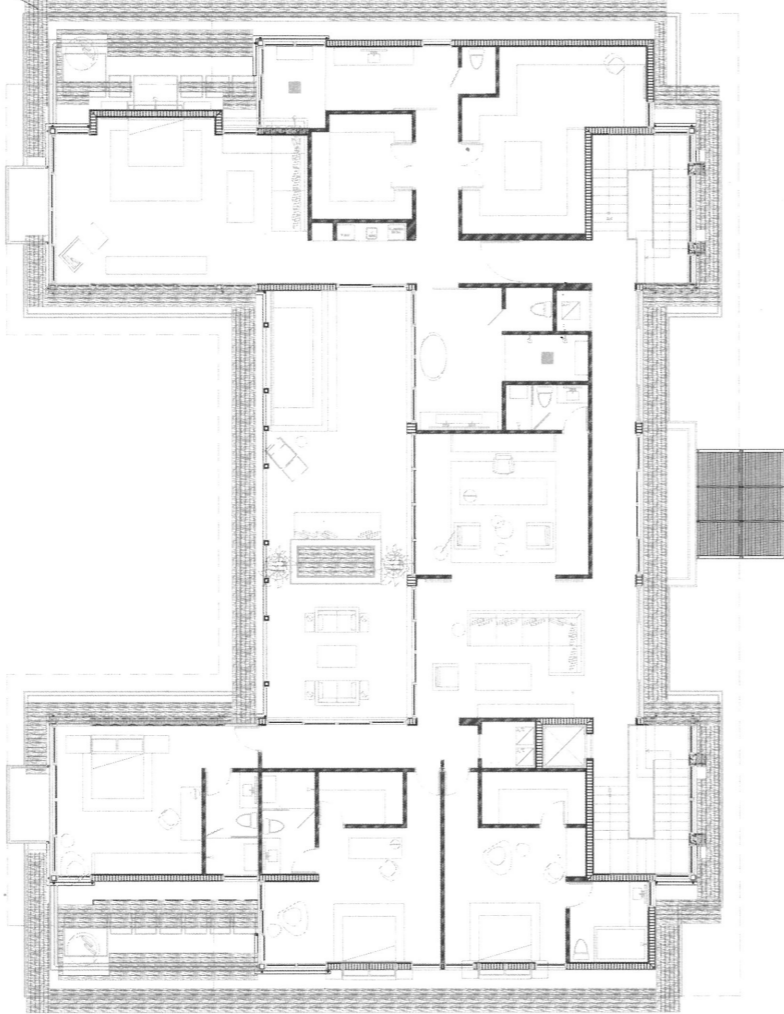
L801



On the 2nd floor the building plumbing contractor shall stub up a 1.5" non-pressurized water supply line in the designated planter.

The irrigation installer shall connect to the 1.5" non-pressurized water supply line.

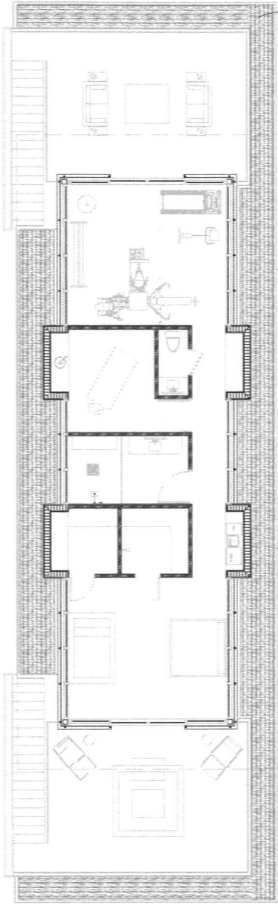
The building plumbing contractor shall run non-pressurized PVC water lines from the designated planter to each planter on the second floor. Pipe lines between planters are to be installed within the roof deck interstitial space. Pipe routing between planters may be shown schematically. Verify routing before commencement of construction.



On the 2nd floor the building plumbing contractor shall stub up a 1" non-pressurized water supply line in the designated planter.

The irrigation installer shall connect to the 1" non-pressurized water supply line.

The building plumbing contractor shall run non-pressurized PVC water lines from the designated planter to each planter on the second floor. Pipe lines between planters are to be installed within the roof deck interstitial space. Pipe routing between planters may be shown schematically. Verify routing before commencement of construction.



5840 N BAY GARDEN

5840 N BAY ROAD | MIAMI BEACH, FLORIDA 33139

Handwritten signature and date: 03.05.2020

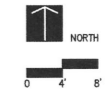
SEAL OF TYLER NIELSEN -
(LAP667067)



03.05.2020

SECOND LEVEL IRRIGATION
PLAN

DATE	ISSUE
02.17.2020	MB DRB REVIEW
03.05.2020	REVISION 01



L802