

LEGEND	
	EXISTING GROUND LIGHT
	EXISTING IRRIGATION CONTROL VALVE
	EXISTING POST INDICATOR VALVE
	EXISTING FIRE DEPT. CONNECTION
	EXISTING SIGN
	EXISTING WATER METER
	EXISTING WATER VALVE
	EXISTING PALM TREE
	EXISTING TREE

CROWN CASTLE
SMALL WIRELESS FACILITIES
DRB 19-0500 (FL6463)
1337 15th Street

PROPOSED SITE PLAN

JANUARY 13, 2020
N.T.S.

R.J. HEISENBOTTLE ARCHITECTS, P.A.

2199 PONCE DE LEON BLV, CORAL GABLES, FLORIDA 33134
PHONE: 305.446.7799 / FAX: 305.446.9275
FLORIDA REGISTRATION NUMBER: AR 0010865

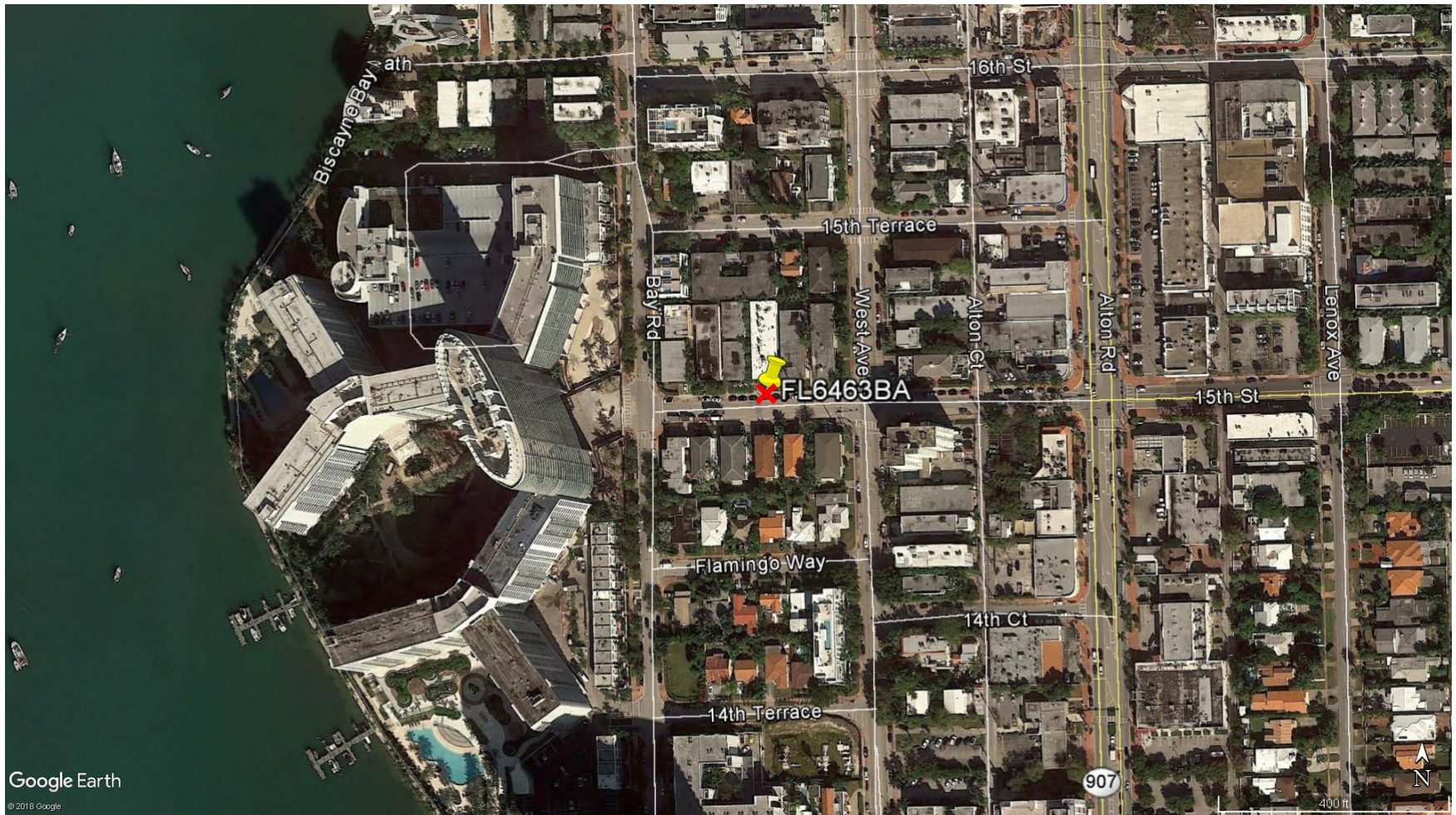


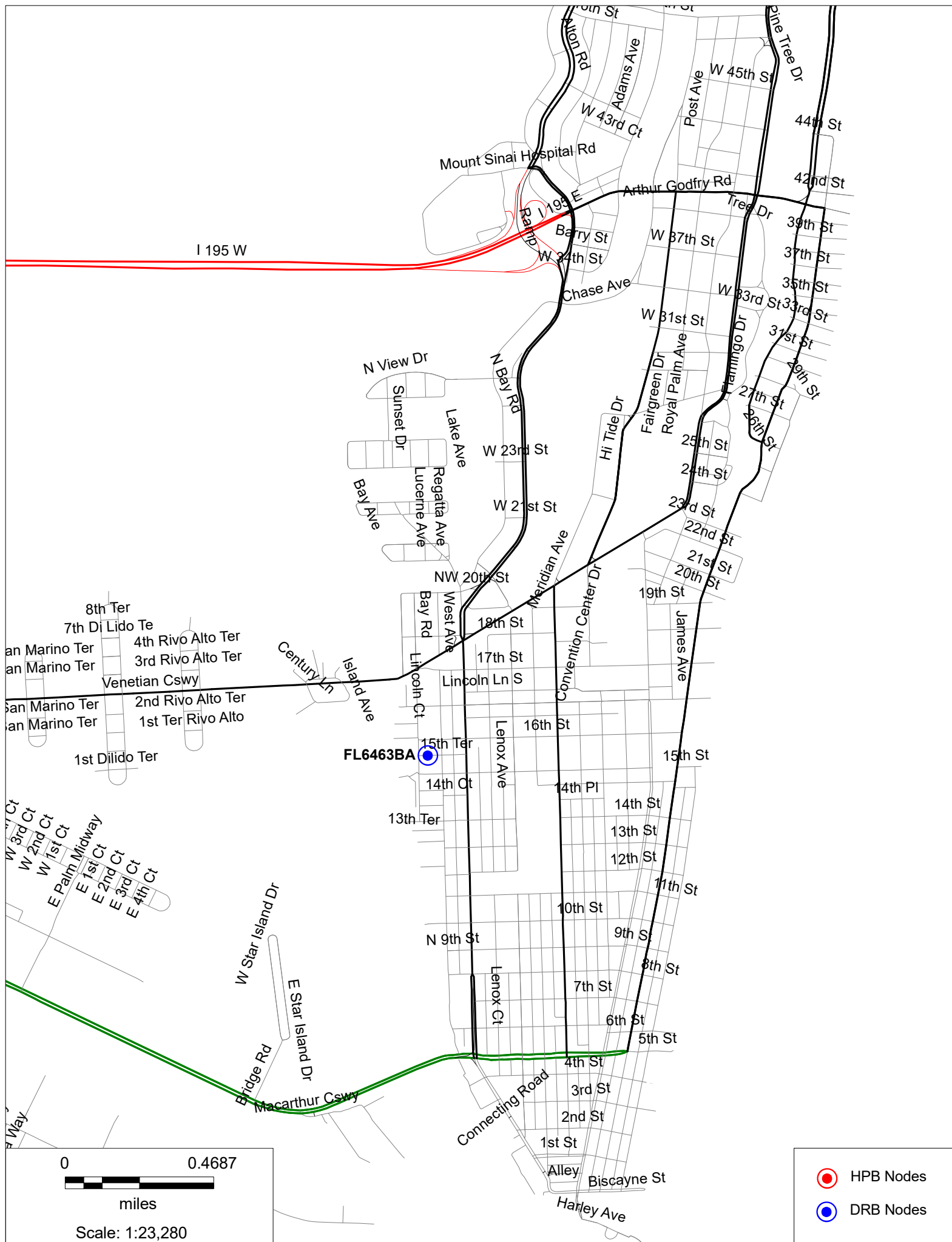
1.1320

FL6463BA

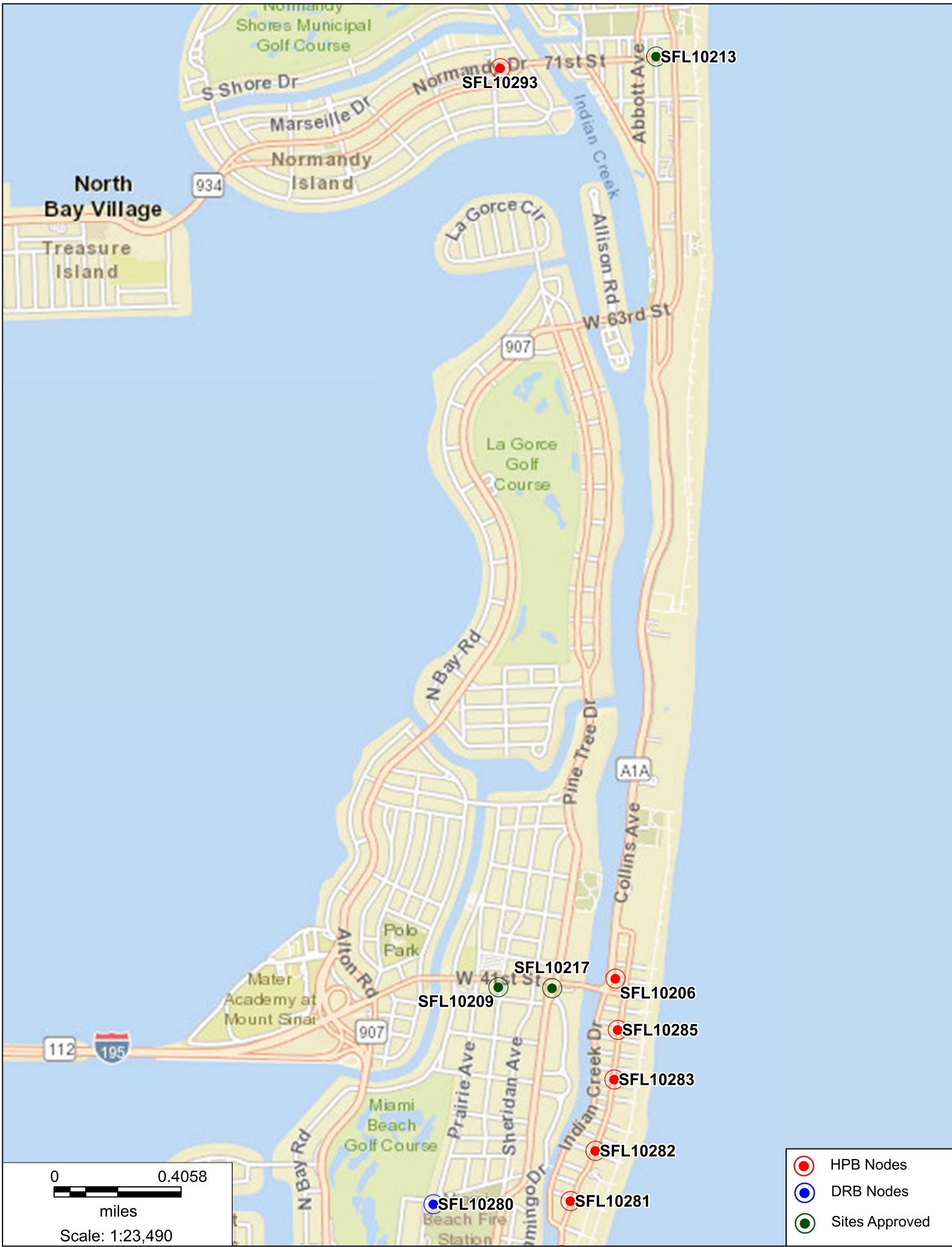
Aerial View

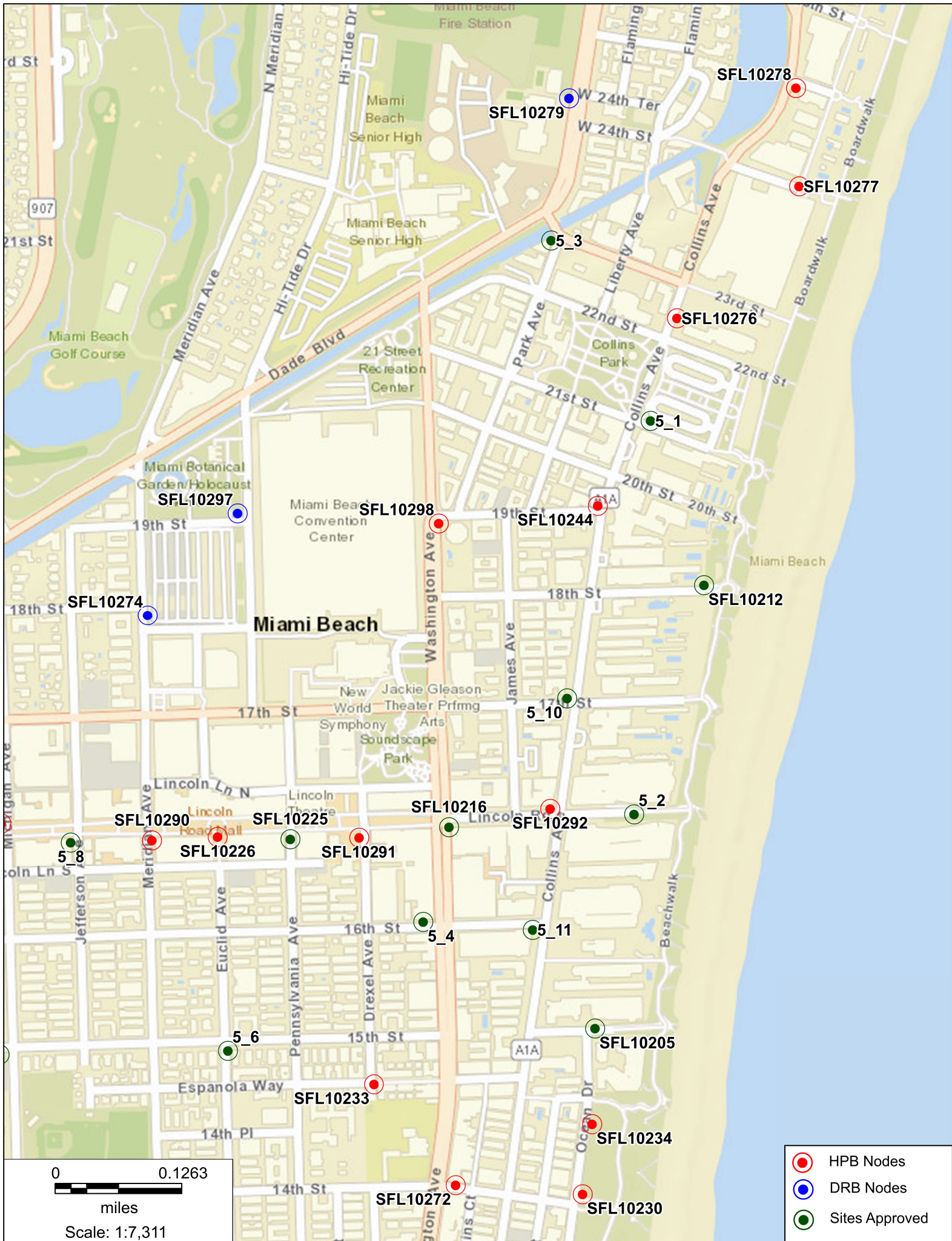
1337 15th St, Miami Beach, FL, 33139

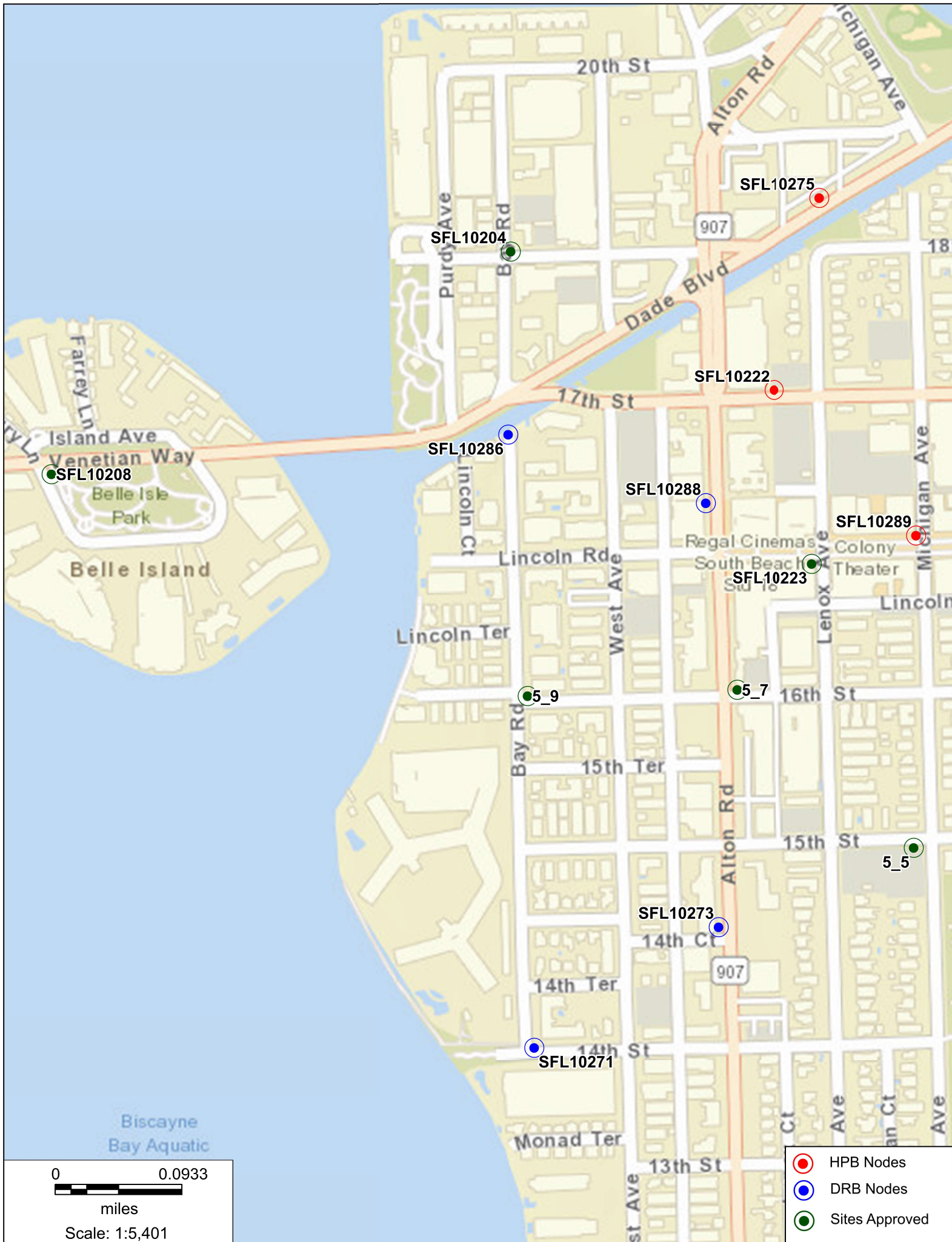


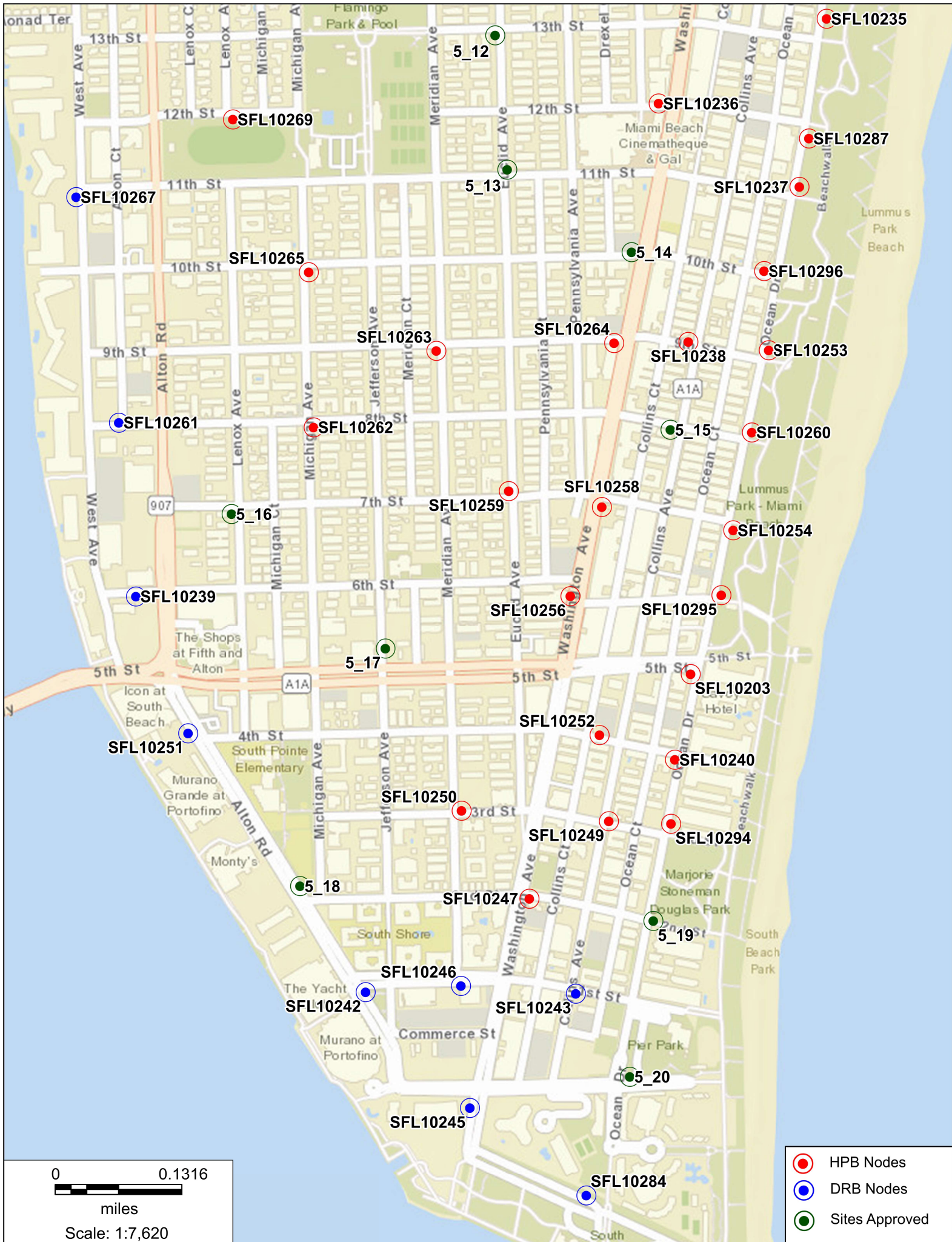












FL6463BA

1337 15th St, Miami Beach, FL, 33139

Proposed Front view



FL6463BA

1337 15th St, Miami Beach, FL, 33139

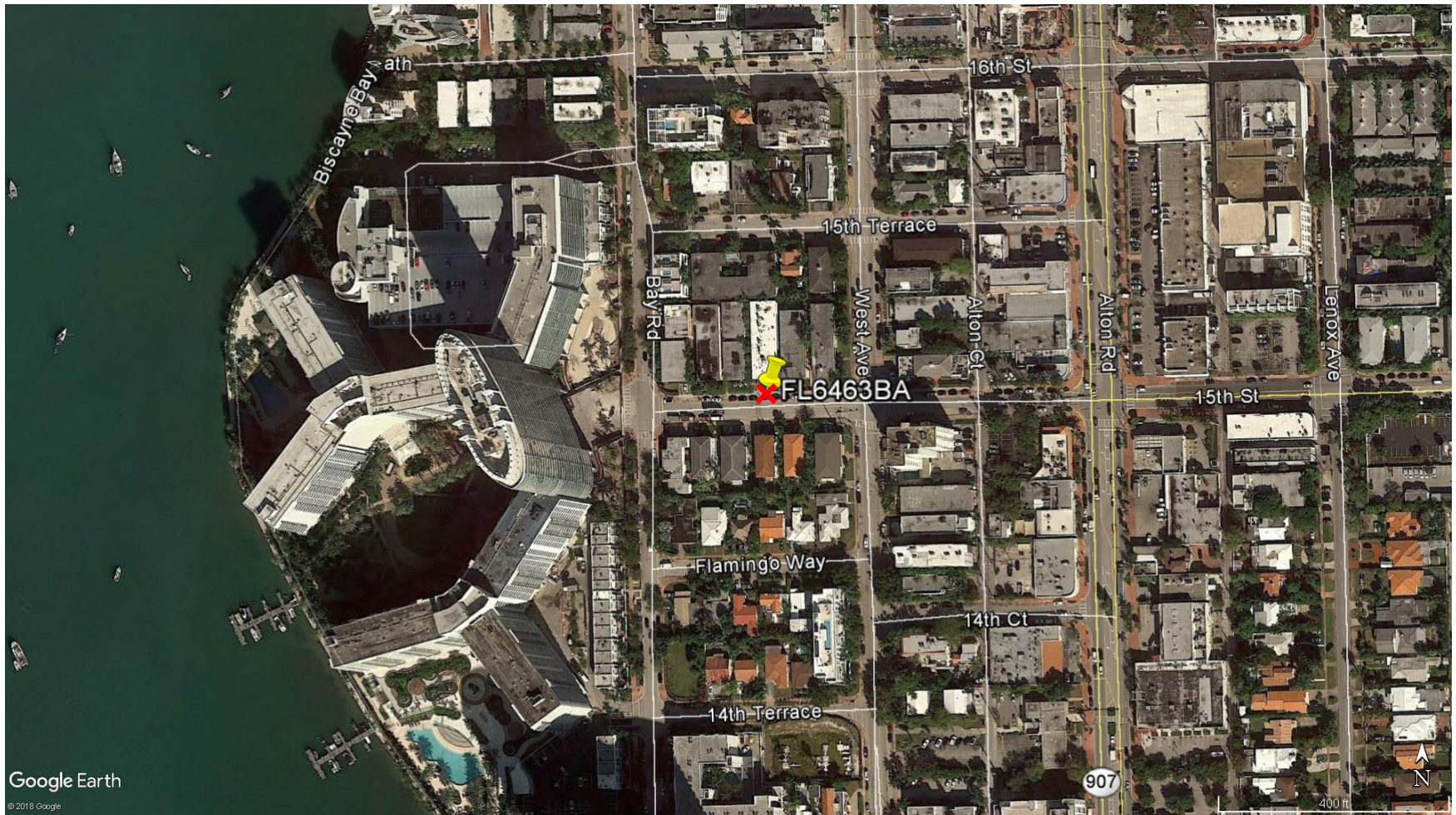
Proposed Side view



FL6463BA

Aerial View

1337 15th St, Miami Beach, FL, 33139



FL6463BA

1337 15th St, Miami Beach, FL, 33139

North



FL6463BA

East

1337 15th St, Miami Beach, FL, 33139



FL6463BA

South

1337 15th St, Miami Beach, FL, 33139



FL6463BA

1337 15th St, Miami Beach, FL, 33139

West

