

<div>These drawings and specifications are the proprietary property of CommScope Inc. and may be used only for the specific purpose authorized in writing by CommScope Inc.</div> <div>ALL DIMENSIONS ARE IN INCHES U.O.S. TOLERANCES UNLESS OTHERWISE SPECIFIED:</div> <div><div><div>.X = ±</div><div>.12</div><div>ANGLES</div><div>±2°</div></div><div><div>.XX = ±</div><div>.06</div><div>FRACTIONS</div><div>±1/32</div></div><div><div>.XXX= ±</div><div>.031</div><div></div><div></div></div></div> <div>REMOVE BURRS AND BREAK EDGES .005</div> <div>DO NOT SCALE THIS PRINT</div>	<div>DRAWN BY:</div> <div>MJP</div>	<div>SHEET:</div>	<div>PART NUMBER:</div>
	<div>CHECKED BY:</div>	<div>SCALE:</div>	<div>DESCRIPTION:</div>
	<div>DATE:</div>	<div>MATERIAL:</div>	<div>DRAWING TYPE:</div>
	<div>REVISION:</div> <div>A</div>	<div>FINISH:</div> <div>WEIGHT</div>	



C241-GR484

Dark Gray Fine Texture Semi-Gloss



C241-GR07

Gray Fine Texture Semi-Gloss



C241-GR305

Bay Gray Fine Texture Semi-Gloss



T243-GR522

Flint Gray Fine Texture Semi-Gloss



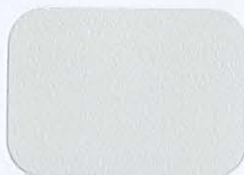
T241-GR11

Platinum Gray Fine Texture Semi-Gloss



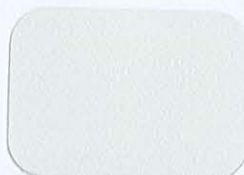
T031-WH06

Pearl White Fine Texture Semi-Gloss



T243-GR301

Quartz Gray Fine Texture Semi-Gloss



T241-GR142

Light Gray Fine Texture Semi-Gloss



T241-BG137

Beige Fine Texture Semi-Gloss



T375-BK07

Copper Vein Semi-Gloss*



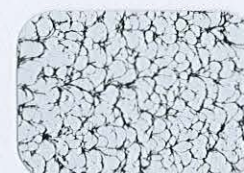
T375-BK10

Gold Vein Semi-Gloss*



T375-BK26

Silver Vein Semi-Gloss*



T075-WH34

Black/White Vein Semi-Gloss



T064-BR24

Bronze Hammertone Semi-Gloss



T064-GR660

Gray Hammertone Semi-Gloss



T064-GR05

Silver Hammertone Semi-Gloss



T064-BL95

Blue Hammertone Semi-Gloss



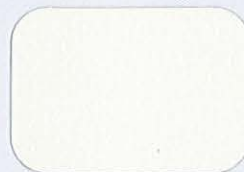
T064-GN81

Green Hammertone Semi-Gloss



C013-GR08

Gray Hammer Semi-Gloss



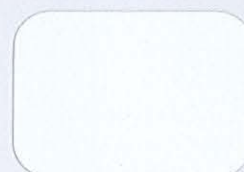
T013-BG38

Beige Hammer Semi-Gloss



T012-WH260

White Hammer Semi-Gloss



T013-WH09

White Hammer Semi-Gloss



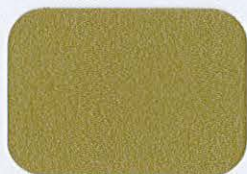
T025-BR01

Bronze Pearlescent 50% Gloss



T028-GR02

Steel Gray Pearlescent 80% Gloss



T353-YL02

Brass 30% Gloss*



T357-GR105

Silver Metallic 70% Gloss*



T353-GR06

Silver Metallic 30% Gloss*



T358-GR539

Chrome 80% Gloss*



T391-BG290

Metallic Bronze Semi-Gloss Texture*



T091-GR309

Mock Rock Texture Semi-Gloss



C291-GN20

Patina Texture Semi-Gloss



T091-GN57

Verdigris Texture Semi-Gloss



T091-BR47

Rust Texture Semi-Gloss

Computer Colors

Specialty Coatings



C241-BK303
Black Fine Texture Low-Gloss



C081-BK176
Black Wrinkle Semi-Gloss



E311-BK04
Black Hammer Low-Gloss**



T013-BK62
Black Hammer Semi-Gloss



T032-BR62
Brown Fine Texture Semi-Gloss



P004-BR23
Bronze 40% Gloss



P004-GR09
ANSI #49 Gray 40% Gloss



P004-GR16
ANSI #61 Gray 40% Gloss



H305-GR10
Light Gunmetal Gray 50% Gloss**



P003-GR01
Gray #26307 30% Gloss



H303-WH16
Antique White 30% Gloss**



P005-WH01
White #27875 50% Gloss



T002-WH08
White 20% Gloss



T008-GR736
Gray ANSI 61 80% Gloss



P008-GR21
RAL 7042 Gray 80% Gloss



T009-GR230
RAL 7035 Gray 90% Gloss



T009-WH13
White 90% Gloss



P009-WH14
White 90% Gloss



H309-WH27
Frost White 90% Gloss**



T032-BG03
Beige Texture Semi-Gloss



T032-WH15
White Texture Semi-Gloss



C031-WH120
White Texture Semi-Gloss



T009-BG16
Designer Beige 90% Gloss



P009-BG02
Beige 90% Gloss



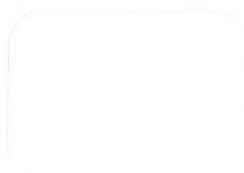
T009-BG01
Almond 90% Gloss



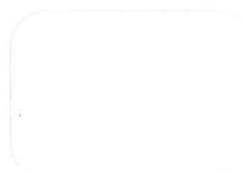
H308-WH25
White 80% Gloss**



P009-WH04
White 90% Gloss



T009-WH11
White 90% Gloss



T009-WH12
Hi-Reflective White 90% Gloss



T007-WH121
White 70% Gloss



E305-GR533
Gray Primer 50% Gloss**



E305-WH243
White Primer 50% Gloss **



H304-GR312
Anti-Gassing Primer 40% Gloss**



E396-GR1372
Zinc Rich Primer

If a clear topcoat finish is preferred
T209-CL01 90% Gloss Clear TGIC Polyester
T002-CL02 20% Gloss Clear TGIC Polyester

The samples on this card are representative only and vary slightly from actual gloss, color and texture.

CITY OF MIAMI BEACH
PLANNING DEPARTMENT

DESIGN REVIEW BOARD
June 2, 2020

CROWN CASTLE

DISTRIBUTED ANTENNA SYSTEM

DRB 19-0499

FL6444 / 960 West Ave., Miami Beach FL 33139

AERIAL VIEW

PROPOSED LOCATION



FL 6444
960 West Ave., Miami Beach, FL 33139
WEST VIEW

Existing Street Light
to be Replaced



Proposed DAS Node with
Integrated Street Light

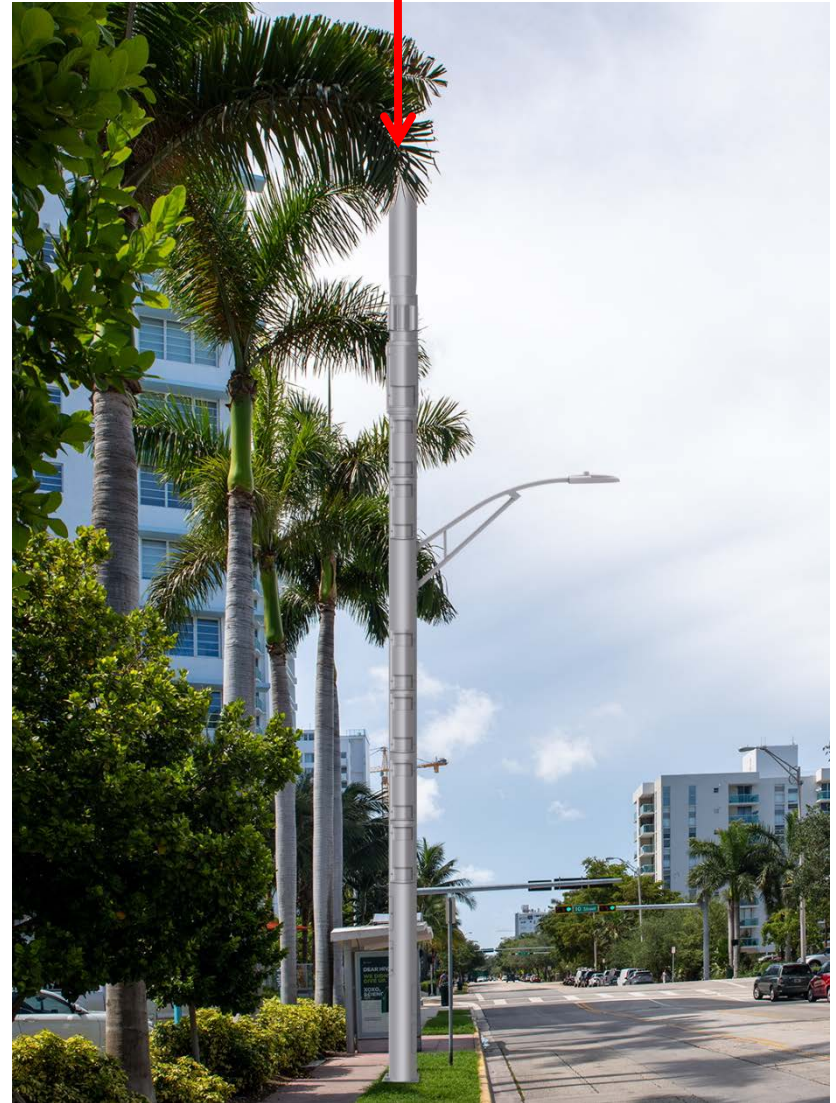


FL 6444
960 West Ave., Miami Beach, FL 33139
NORTH VIEW

Existing Street Light
to be Replaced



Proposed DAS Node
with Integrated
Street Light



CITY OF MIAMI BEACH
PLANNING DEPARTMENT

DESIGN REVIEW BOARD
June 2, 2020

CROWN CASTLE

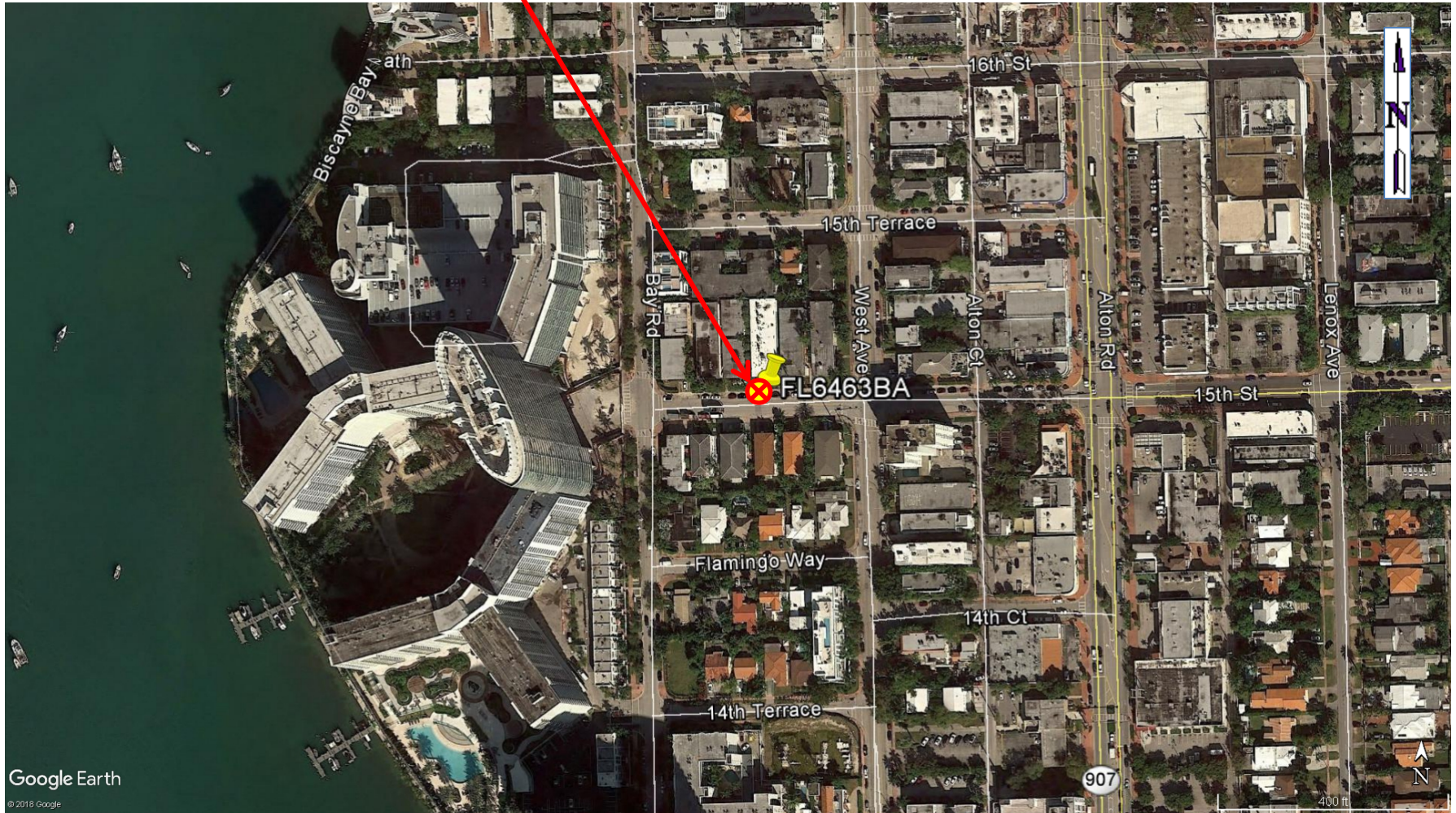
DISTRIBUTED ANTENNA SYSTEM

DRB 19-0500

FL6463 / 1337 15th Street, Miami Beach FL 33139

AERIAL VIEW

PROPOSED LOCATION



FL 6463
1337 15th Street, Miami Beach, FL 33139
NORTH VIEW

Existing Street Light
to be Replaced



Proposed DAS Node with
Integrated Street Light



FL 6463
1337 15th Street, Miami Beach, FL 33139
EAST VIEW

Existing Street Light
to be Replaced



Proposed DAS Node with
Integrated Street Light



CITY OF MIAMI BEACH
PLANNING DEPARTMENT

DESIGN REVIEW BOARD
June 2, 2020

CROWN CASTLE

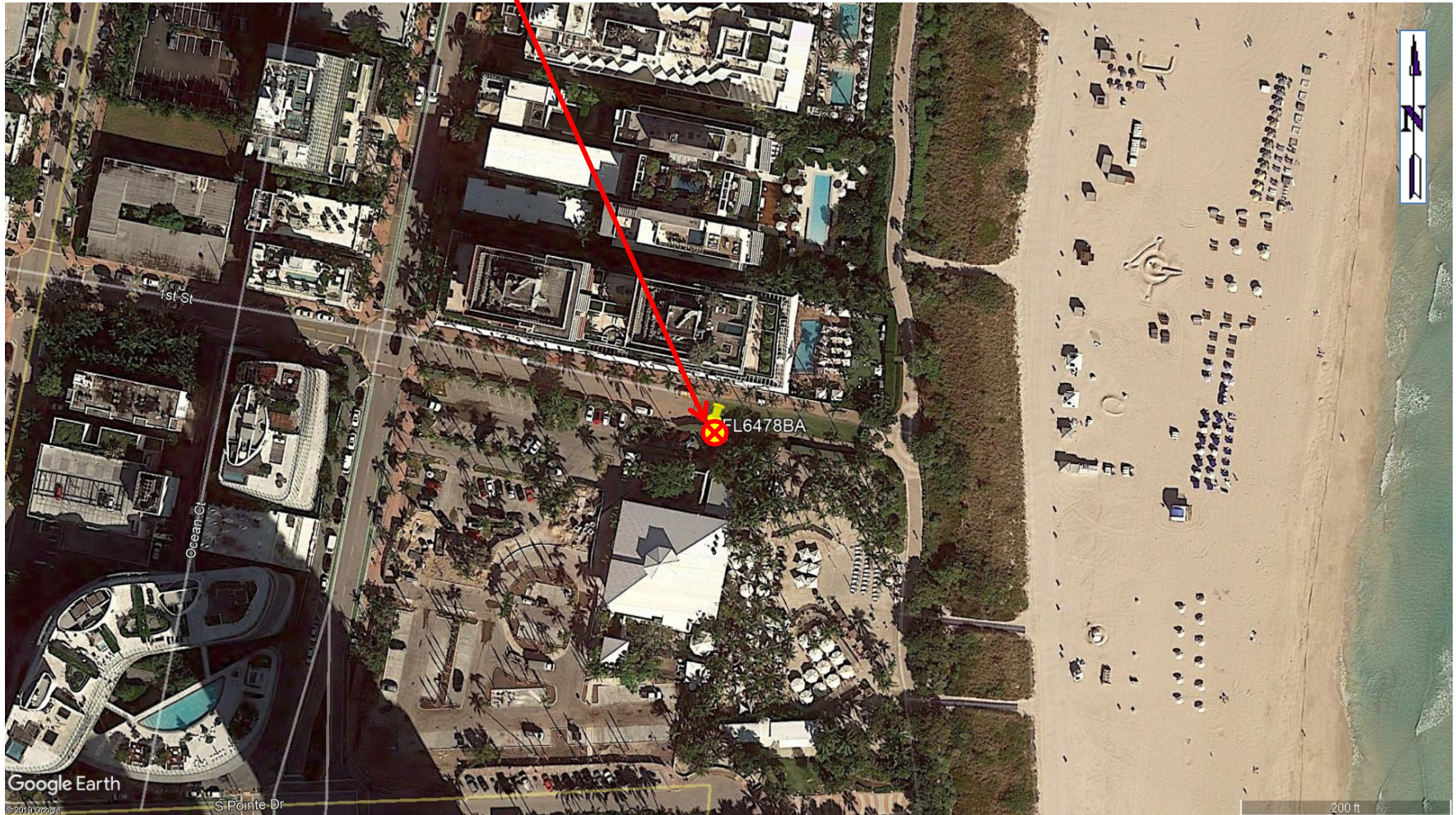
DISTRIBUTED ANTENNA SYSTEM

DRB 19-0501

FL6478 / 52 1ST Street, Miami Beach FL 33139

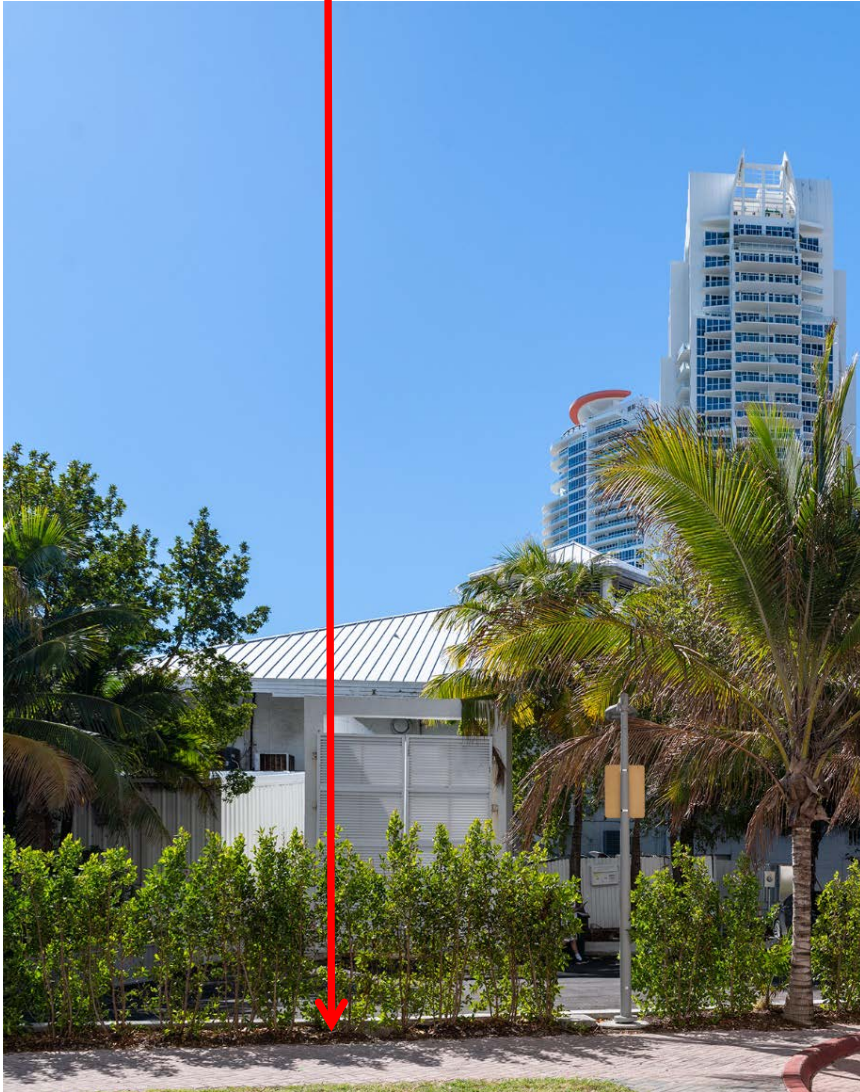
AERIAL VIEW

PROPOSED LOCATION

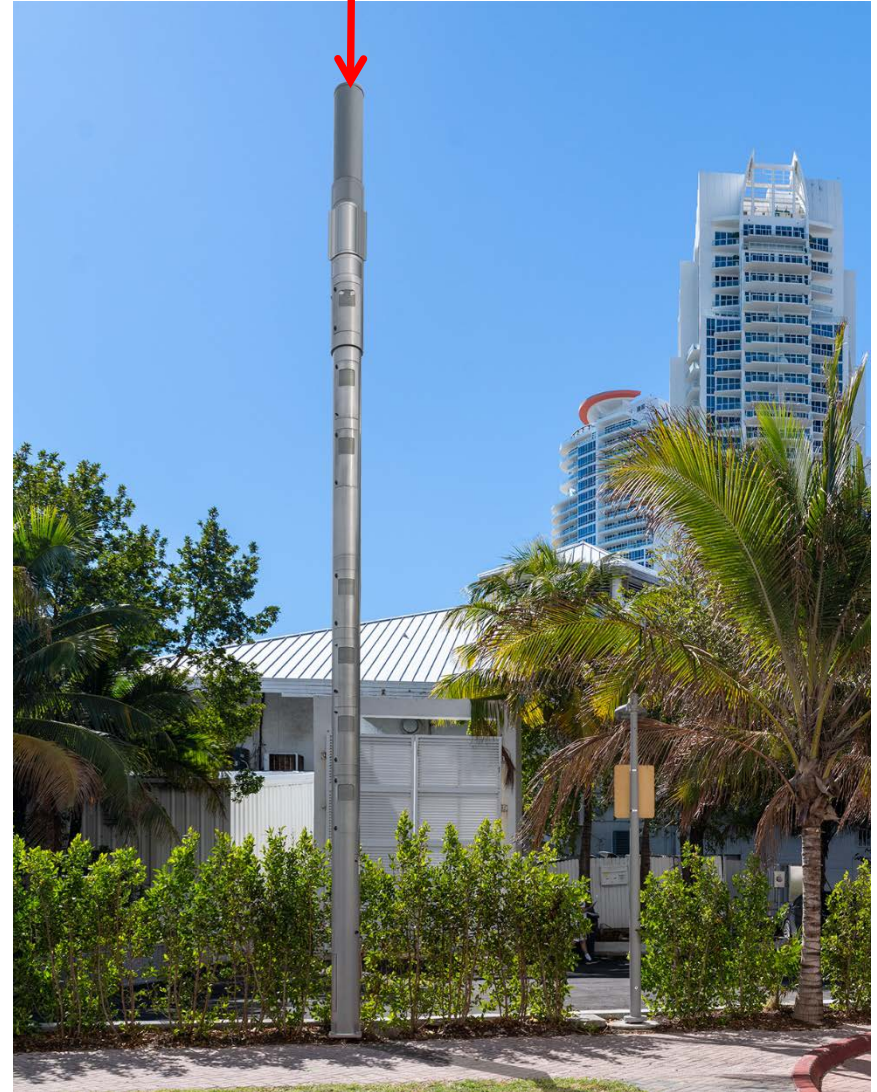


FL 6478
52 1st Street, Miami Beach, FL 33139
SOUTH VIEW

Location of
Proposed DAS Node

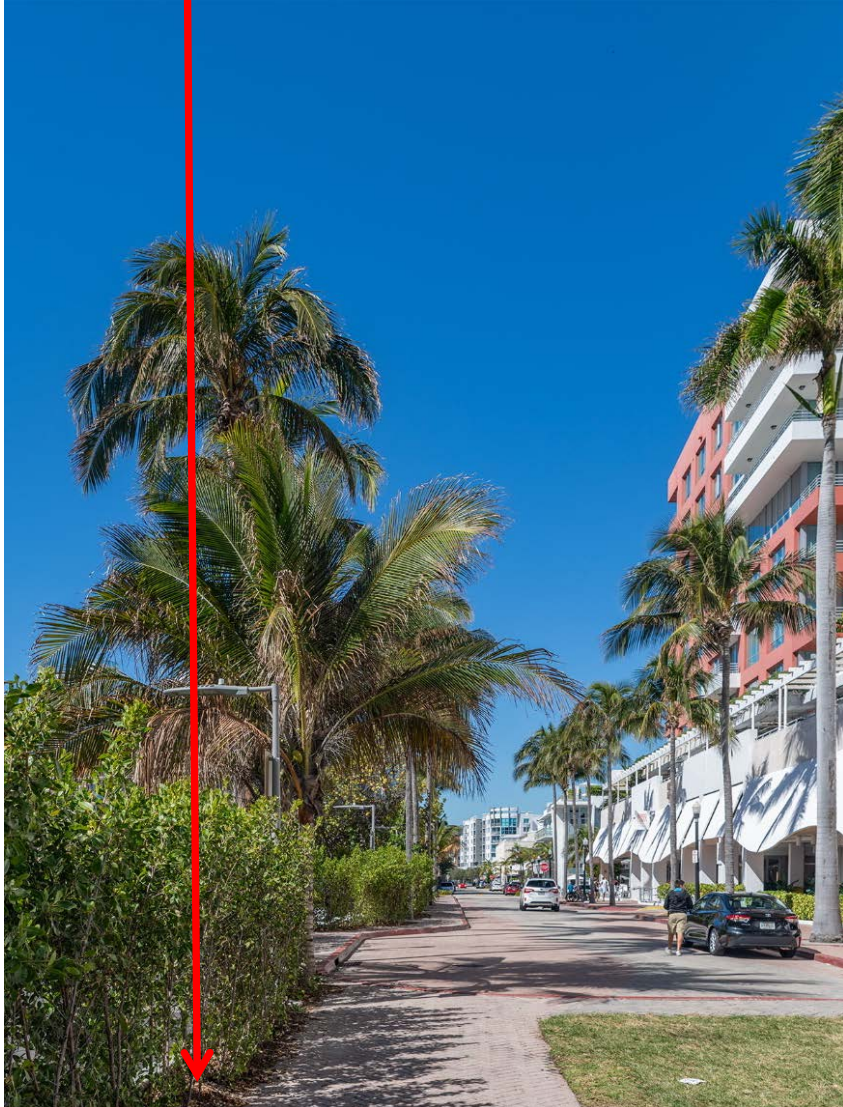


Proposed DAS Node



FL 6478
52 1st Street, Miami Beach, FL 33139
WEST VIEW

Location of Proposed DAS Node



Proposed DAS Node



CITY OF MIAMI BEACH
PLANNING DEPARTMENT

DESIGN REVIEW BOARD
June 2, 2020

CROWN CASTLE

DISTRIBUTED ANTENNA SYSTEM

DRB 19-0502

MI90SX527 / 5678 Collins Ave. Miami Beach FL 33140

AERIAL VIEW

PROPOSED LOCATION



MI90XS527
5678 Collins Ave., Miami Beach, FL 33140
WEST VIEW

Location of
Proposed DAS Node



Proposed DAS Node



MI90XS527
5678 Collins Ave., Miami Beach, FL 33140
SOUTH VIEW

Location of Proposed DAS Node



Proposed DAS Node



CITY OF MIAMI BEACH
PLANNING DEPARTMENT

DESIGN REVIEW BOARD
June 2, 2020

CROWN CASTLE

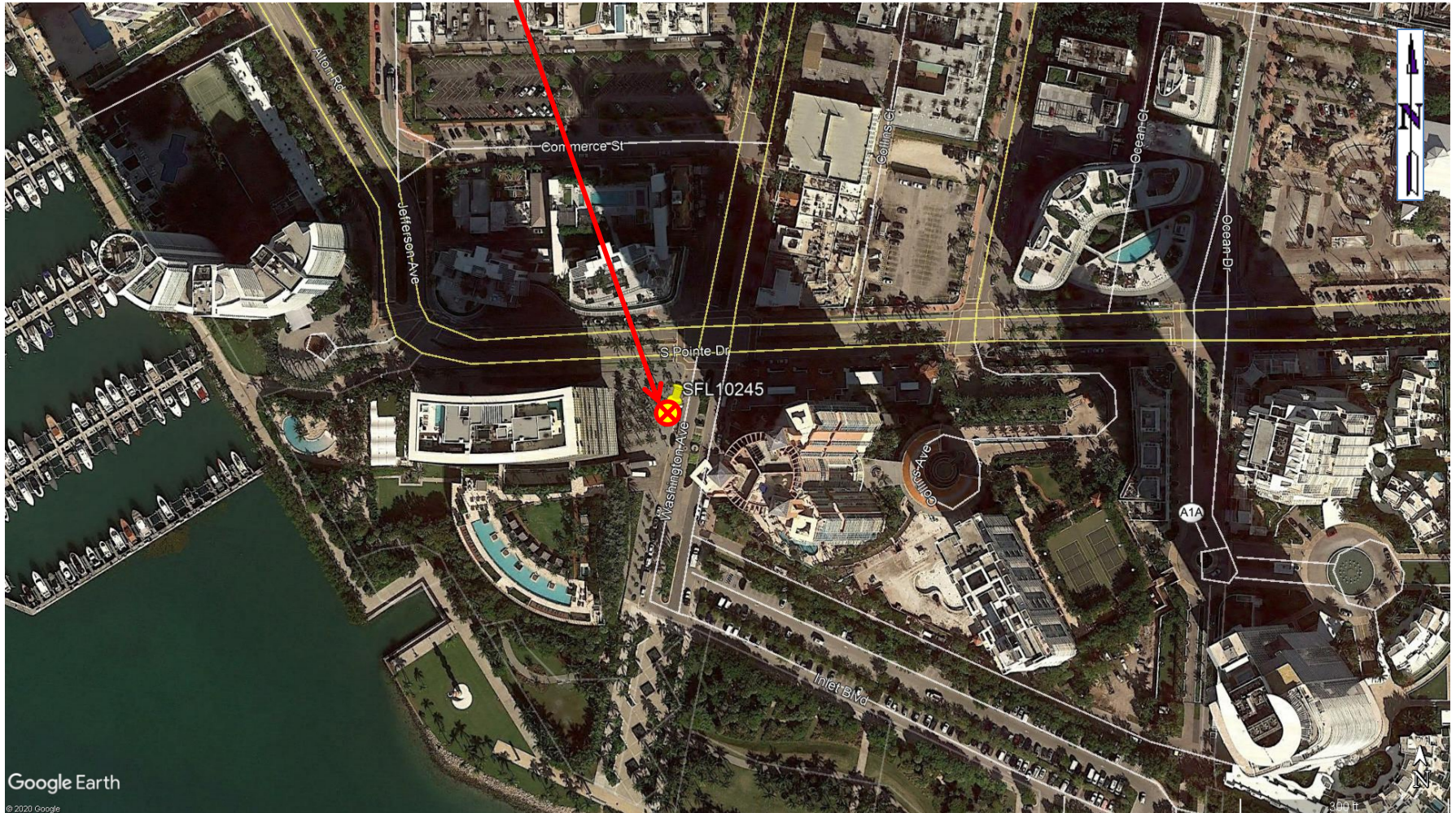
DISTRIBUTED ANTENNA SYSTEM

DRB 20-0524

SFL10245 / 2 Washington Ave. Miami Beach FL 33139

AERIAL VIEW

PROPOSED LOCATION

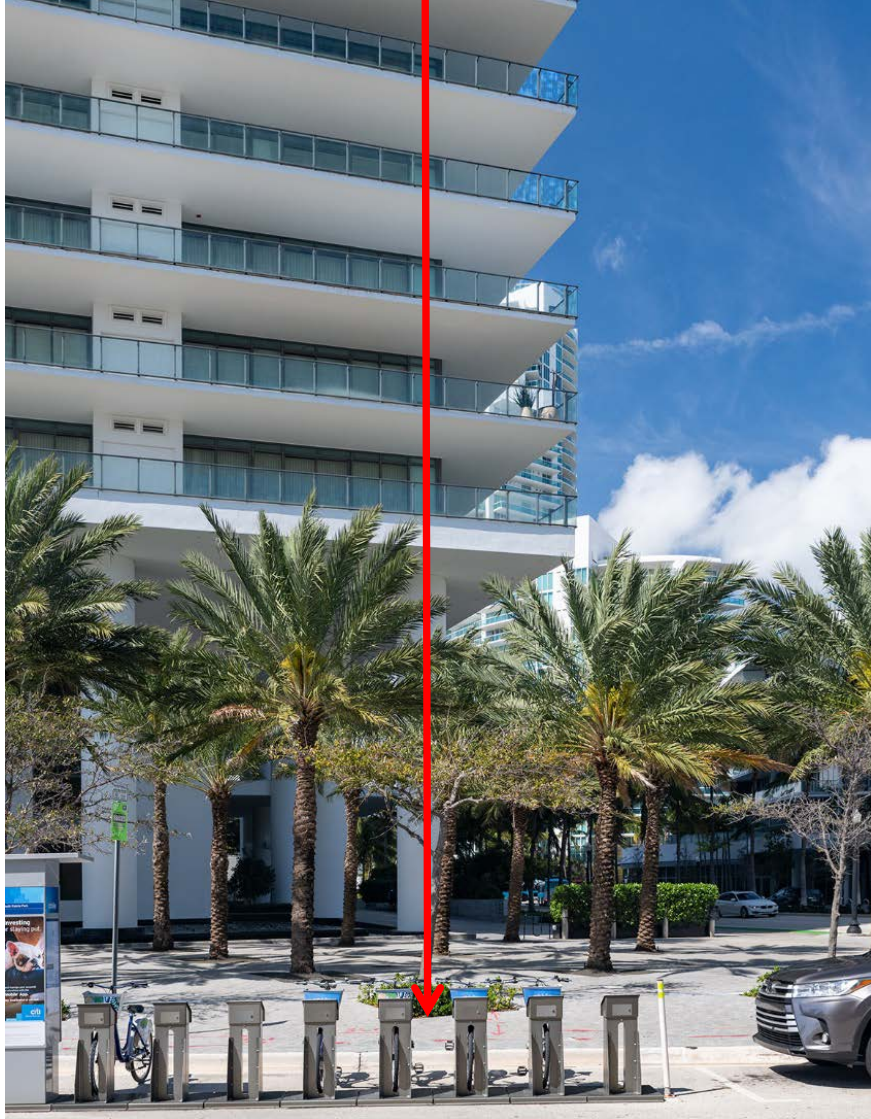


SFL10245

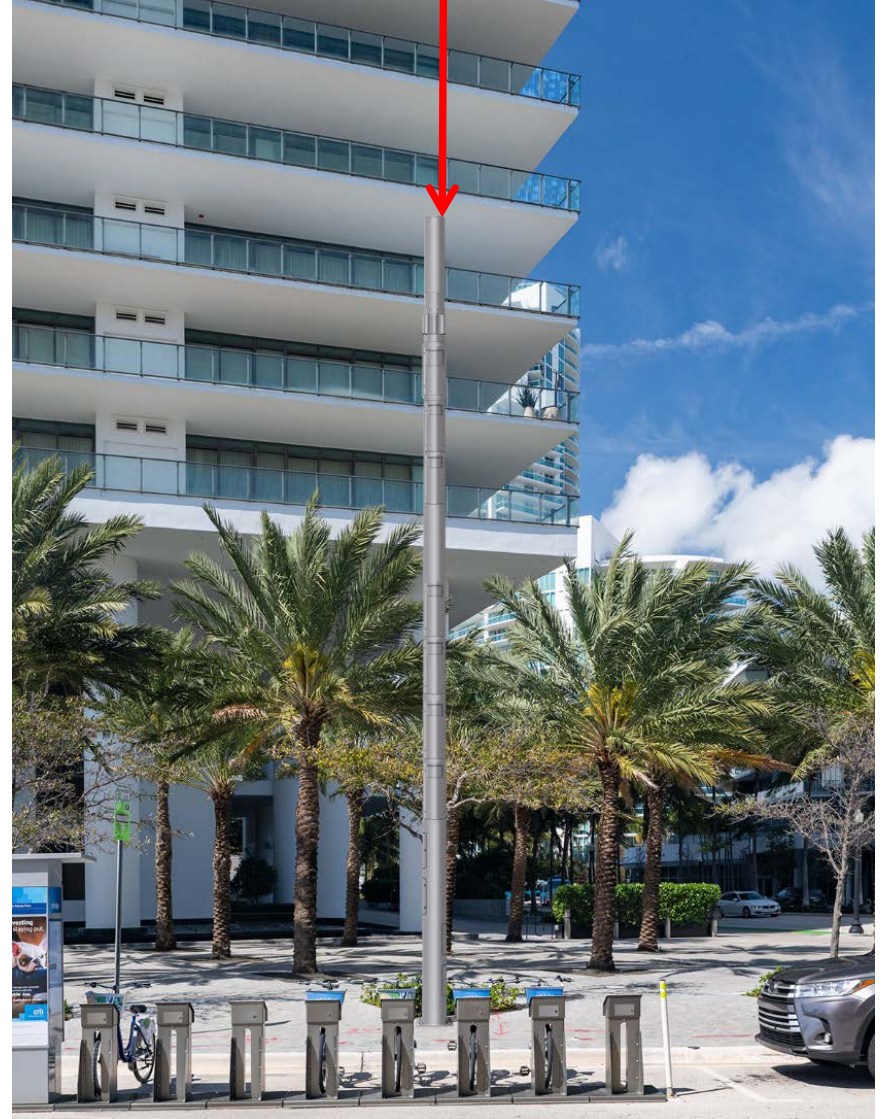
2 Washington Ave., Miami Beach, FL 33139

WEST VIEW

Location of
Proposed DAS Node



Proposed DAS Node



SFL10245
2 Washington Ave., Miami Beach, FL 33139
SOUTH VIEW

Location of
Proposed DAS Node

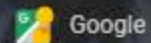


Proposed DAS Node



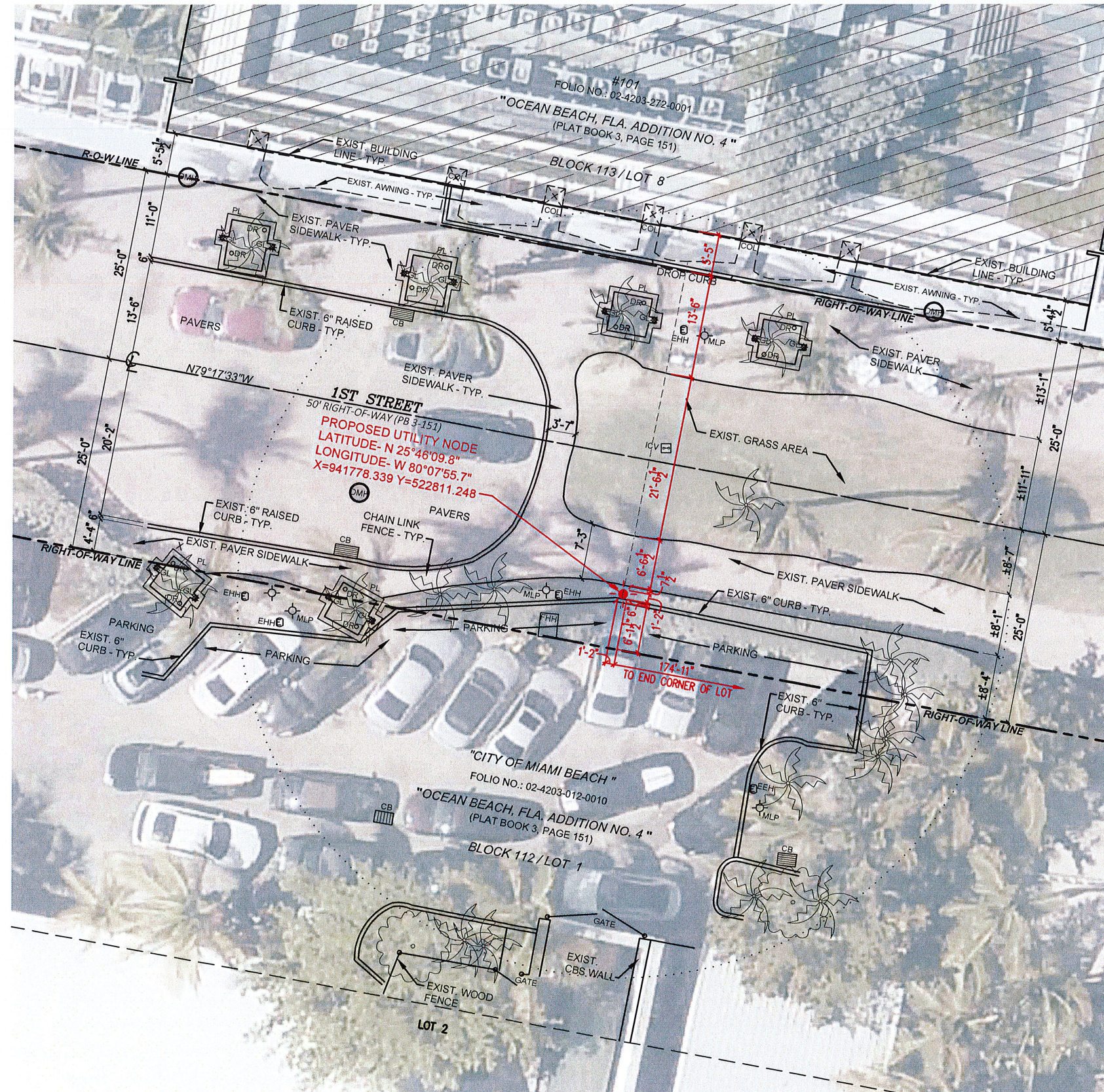


Washington Ave
Miami Beach, Florida



Street View





LEGEND	
	EXISTING CATCH BASIN
	EXISTING ELECTRIC MANHOLE
	EXISTING DRAINAGE MANHOLE
	EXISTING DRAIN
	EXISTING ELECTRIC HANDHOLE
	EXISTING FIBER OPTIC HANDHOLE
	EXISTING GROUND LIGHT
	EXISTING IRRIGATION CONTROL VALVE
	EXISTING METAL LIGHT POLE
	EXISTING PLANTER
	EXISTING PALM TREE
	EXISTING TREE

CROWN CASTLE
 SMALL WIRELESS FACILITIES
 DRB 19-0501 (FL6478)
 52 1st Street

PROPOSED SITE PLAN
 FEBRUARY 10, 2020
 N.T.S.

R.J. HEISENBOTTLE ARCHITECTS, P.A.
 2199 PONCE DE LEON BLV, CORAL GABLES, FLORIDA 33134
 PHONE: 305.446.7799 / FAX: 305.446.9275
 FLORIDA REGISTRATION NUMBER: AR 0010865



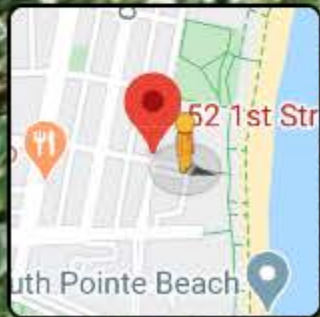
Handwritten signature and date:
 2.6.20



Miami Beach, Florida



Street View



Google

