



I-395/SR 836/I-95 DESIGN-BUILD PROJECT

Financial Project Numbers: 251688-1-52-01, 423126-1-52-01, 423126-2-52-01, 429300-2-52-01

City of Miami Beach Commission Update
February 12, 2020





UPCOMING & ONGOING CONSTRUCTION ACTIVITIES

Ongoing concrete pavement saw cutting in preparation for concrete replacement

TRAFFIC SHIFT:

All I-95 travel lanes shifted to the right on southbound I-95 from SR 836 to NW 8 Street to allow the contractor to construct new bridge foundations.





**ONGOING LANE
CLOSURES**



**THREE MONTH LOOK
AHEAD**

ANTICIPATED NIGHTTIME LANE CLOSURES ON THE I-95 CORRIDOR:

- **Full closure of northbound and southbound I-95 to relocate a crane to the east side of I-95**
- Nighttime lane closure along I-95 between NW 8 Street and NW 29 Street
- Continuous weekend lane closures for pavement work
- Closure of I-95 entrance ramp at NW 8 Street
- I-95 ramps to I-395 and SR 836



CONSTRUCTION ACTIVITIES

Ongoing work on
eastbound SR 836 from
NW 17 Avenue to the
Miami River and from
NW 12 Avenue to I-95
for bridge widening





**ONGOING LANE
CLOSURES**



**THREE MONTH LOOK
AHEAD**

ANTICIPATED NIGHTTIME LANE CLOSURES ON SR 836 CORRIDOR:

- Single and double lane closures along eastbound and westbound SR 836
- NW 17 Avenue under SR 836
- SR 836 ramps to northbound and southbound I-95
- Arterial roads under SR 836
- NW 17 Avenue and NW 12 Avenue ramps to SR 836



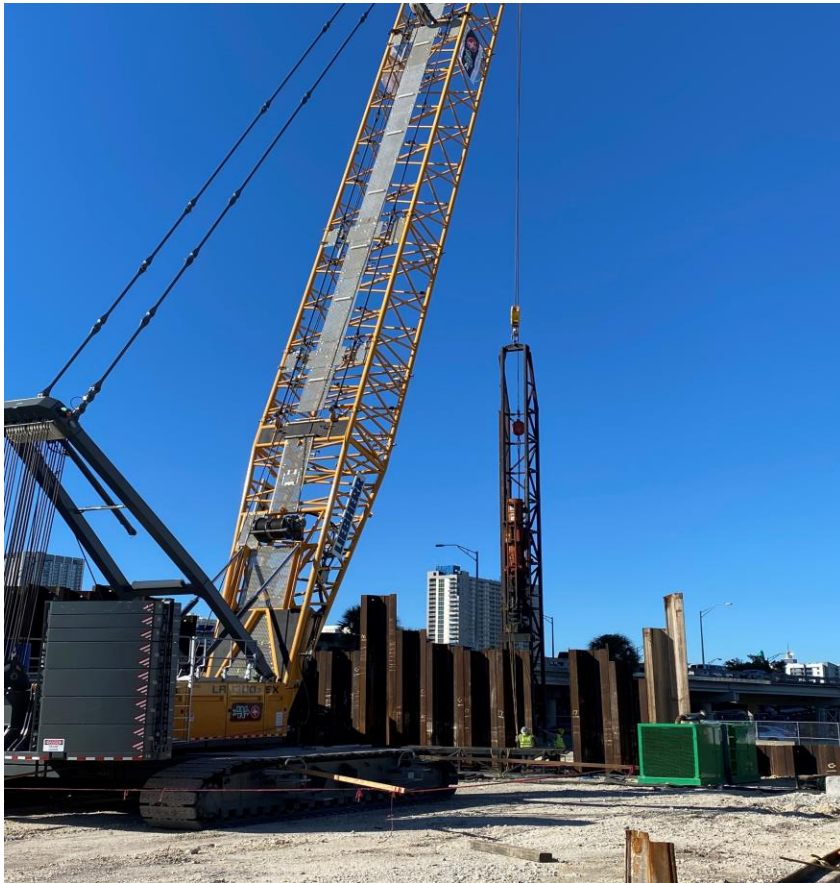
UPCOMING & ONGOING CONSTRUCTION ACTIVITIES

1. Removal of median separator between the eastbound I-395 mainline and the westbound mainline (Ongoing)
2. Construction of westbound outside, local road lanes. Foundation work started at NE 2 Avenue and is moving towards the west (Ongoing)
3. Begin demolition of portions of existing eastbound I-395 to allow for the construction of new bridge foundations (February)

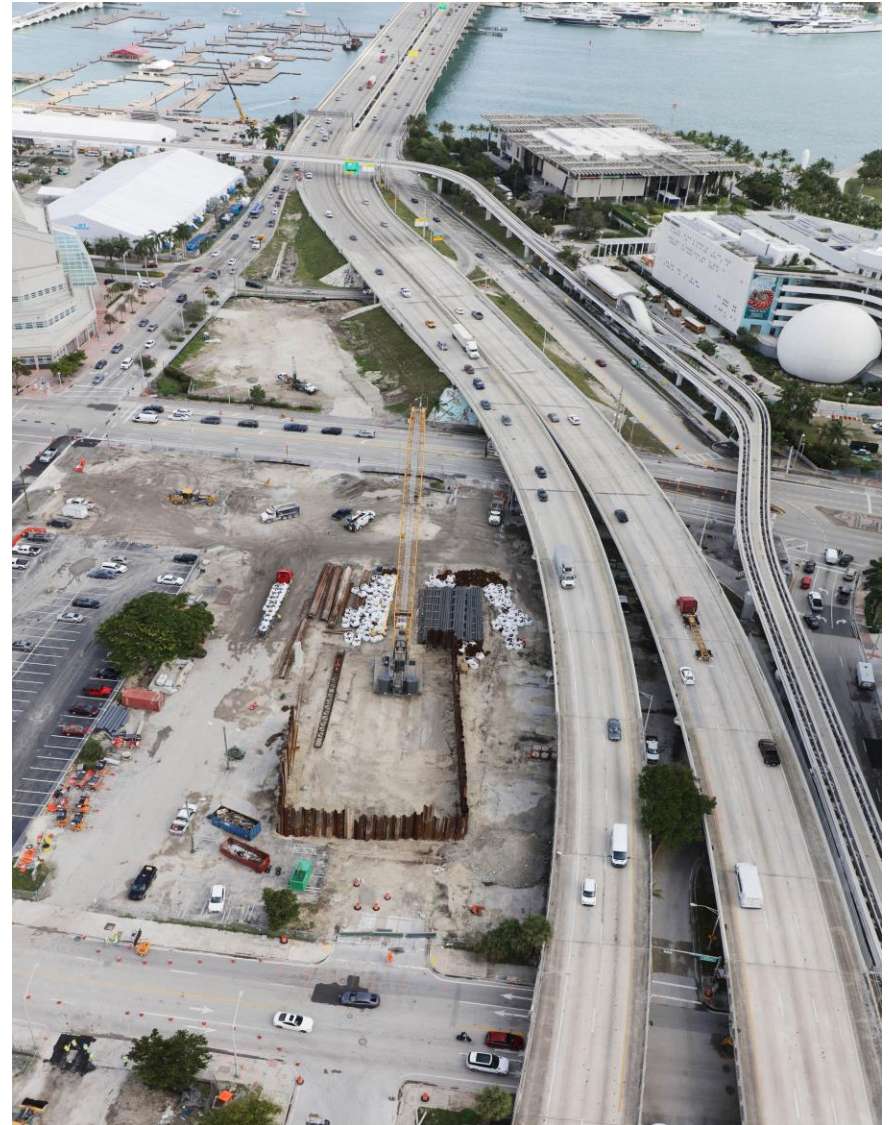




CONSTRUCTION ACTIVITIES



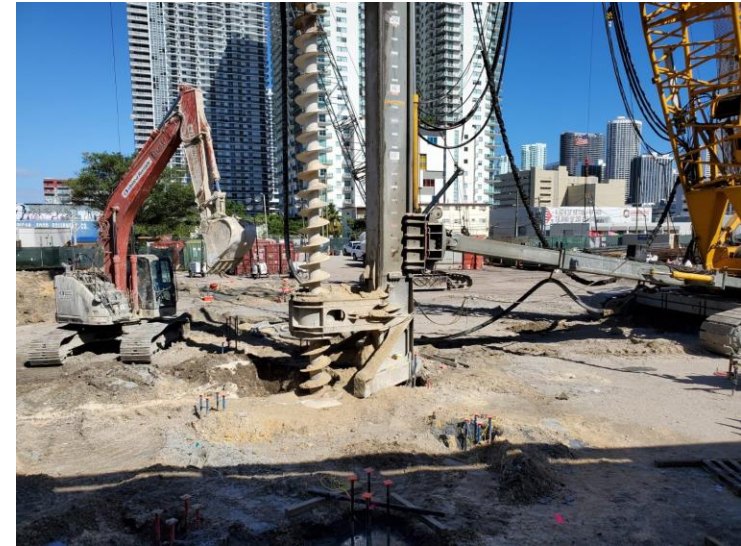
I-395 steel sheet pile driving for Signature Bridge center pier





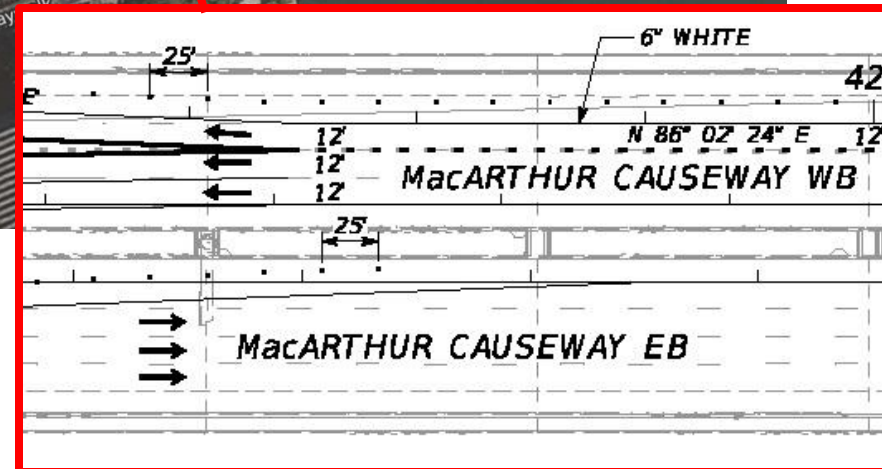
UPCOMING & ONGOING CONSTRUCTION ACTIVITIES

- Auger Cast Pile (ACP) Operations for Segmental Bridges started in late December 2019
- ACP Completed: 160/1948
 - I-395 Segmental ACP – 857
 - I-395 Signature ACP – 520
 - SR 836 Viaduct ACP - 571





UPCOMING & ONGOING CONSTRUCTION ACTIVITIES



Shift traffic to the left on the westbound MacArthur Causeway approach to Biscayne Boulevard exit (February 17, 2020)



UPCOMING & ONGOING CONSTRUCTION ACTIVITIES

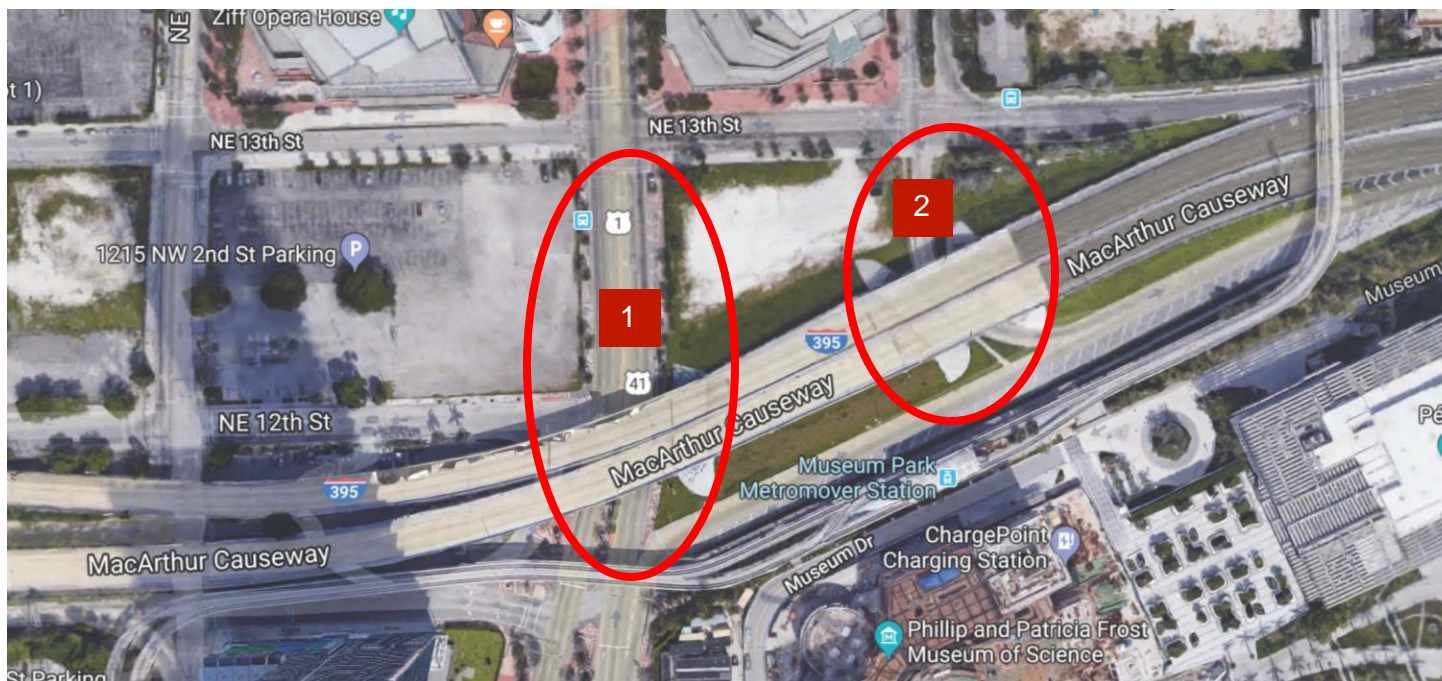


Lane shift (to south side) on the westbound MacArthur Causeway ramp to Biscayne Boulevard to allow for clearing and grubbing activities. This will allow for construction of new retaining wall (February, 17 2020)





UPCOMING & ONGOING CONSTRUCTION ACTIVITIES



1 Traffic shift on Biscayne Boulevard from NE 13 Street to NE 11 Terrace. There will be three NB Lanes (two through lanes and one left turn lane onto NE 13 Street) and three SB Lanes (two through lanes and one left turn lane onto EB MacArthur Causeway)

2 Close Bayshore loop ramp to EB MacArthur Causeway (March 2020)



**ONGOING LANE
CLOSURES**



**THREE MONTH LOOK
AHEAD**

ANTICIPATED NIGHTTIME LANE CLOSURES ON I-395 CORRIDOR:

- Lane closures along eastbound and westbound I-395
- Lane closures along Biscayne Boulevard and other arterial roadways adjacent to I-395
- I-395 to I-95 ramp closures

COMMUNITY OUTREACH



PROJECT WEBSITE

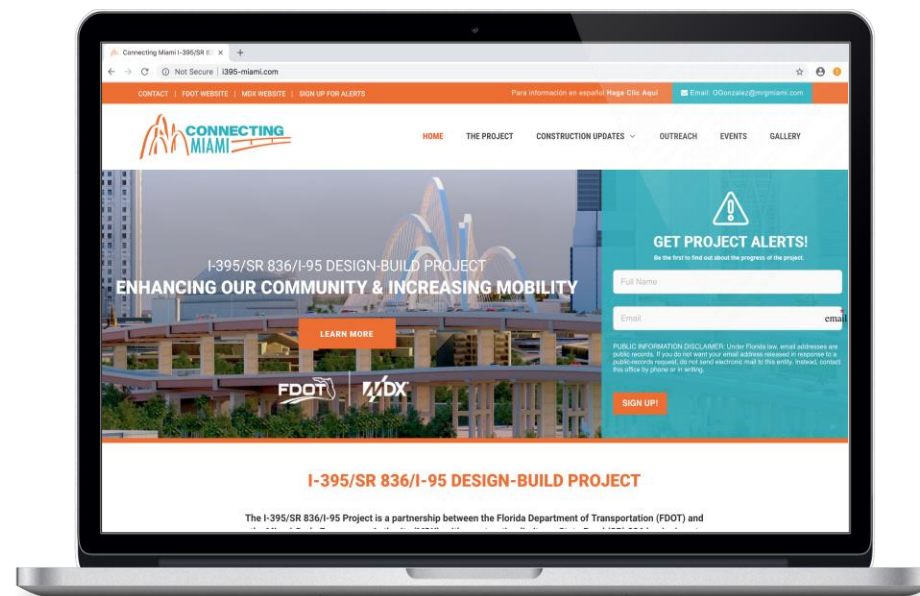
- www.i-395miami.com
- Sign-up for project alerts/updates
 - Lane closure information
 - Upcoming construction activities
 - Presentations
- Calendar of events

OUTREACH OFFICE IN THE OVERTOWN COMMUNITY

- 1035 NW 3 Avenue, Miami, Florida 33136

STAKEHOLDER MEETINGS

- Ongoing individual stakeholder meetings and presentations
- Next stakeholder meeting – March 16, 2020




THANK YOU!

www.i-395miami.com



Contact:
Oscar Gonzalez

 786-280-0983

 OGonzalez@mrgmiami.com