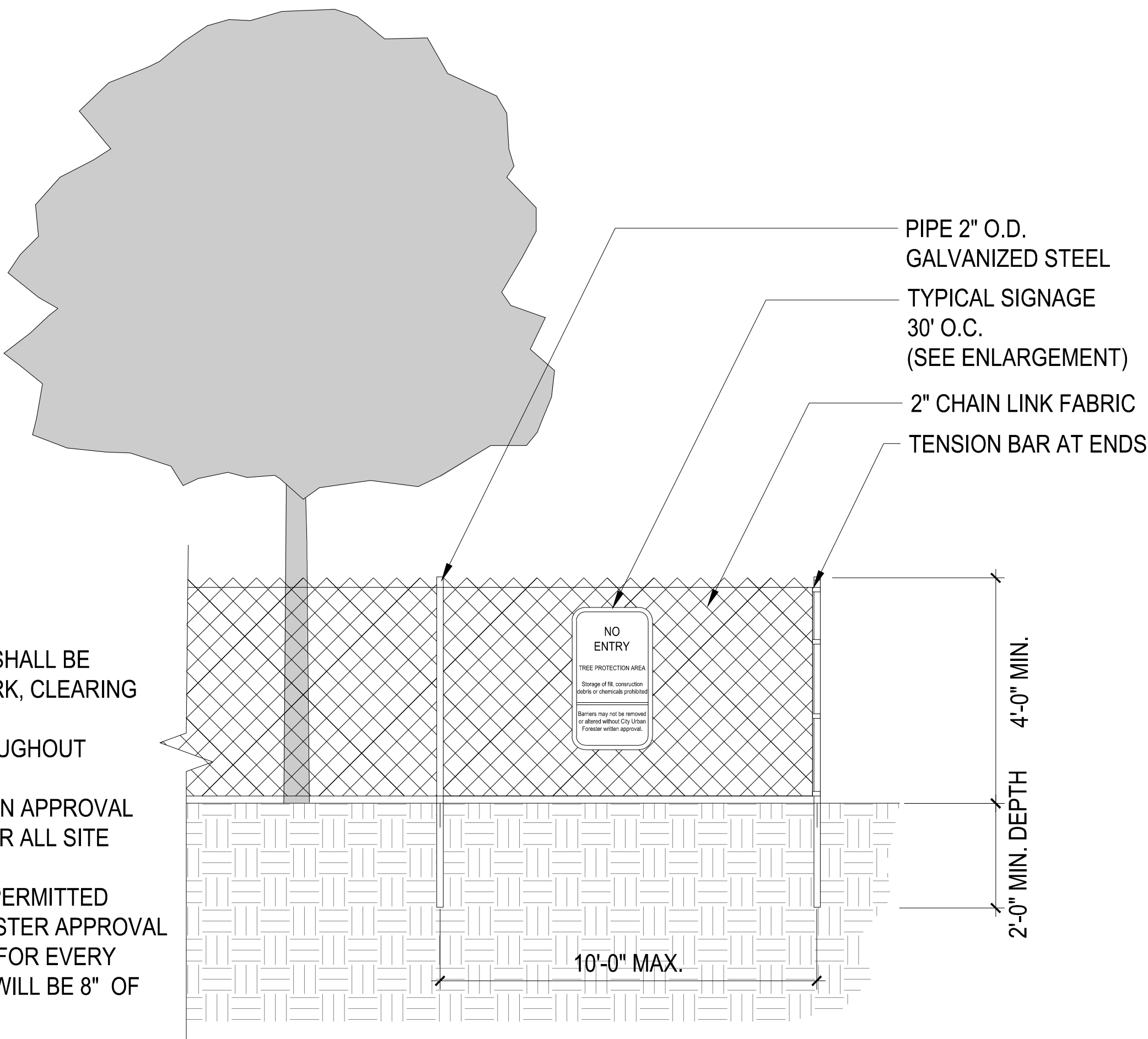


- NOTES:
1. TREE PROTECTION FENCE (TYP) SHALL BE INSTALLED PRIOR TO ANY SITE WORK, CLEARING OR DEMOLITION.
 2. TPF SHALL BE MAINTAINED THROUGHOUT CONSTRUCTION.
 3. REMOVE TPF ONLY WITH WRITTEN APPROVAL FROM CITY URBAN FORESTER AFTER ALL SITE WORK HAS BEEN COMPLETED.
 4. NO CONSTRUCTION ACTIVITIES PERMITTED WITHIN TPF WITHOUT URBAN FORESTER APPROVAL
 5. FENCE LOCATION TO DRIPLINE - FOR EVERY INCH OF TRUNK DIAMETER, THERE WILL BE 8" OF DISTANCE OUT FROM THE TRUNK

1 4' CHAIN LINK TREE/PALM PROTECTION FENCE DETAIL
SCALE: N.T.S.



TREE DISPOSITION LIST

NOTES 1. BASED ON ARBORIST REPORT 11.25.2019
*DENOTES INVASIVE SPECIES

ITEM	SCIENTIFIC NAME	COMMON NAME	DBH IN.	HEIGHT FT.	CANOPY FT.	CONDITION	DISPOSITION
1	FICUS AUREA	STRANGLER FIG	60	90	90	MODERATE	REMAIN
2	CALOPHYLLUM ANTILLANUM	SANTA MARIA	57	70	55	MODERATE	REMOVE
3	MAGNIFERA INDICA	MANGO TREE	26	70	45	MODERATE	REMOVE
4	MAGNIFERA INDICA	MANGO TREE	10	30	25	MODERATE	REMOVE
5	MAGNIFERA INDICA	MANGO TREE	8	30	20	MODERATE	REMOVE
6	CONOCARPUS ERECTUS SERICEUS	SILVER BUTTONWOOD	6	15	18	POOR	REMOVE
7	CONOCARPUS ERECTUS SERICEUS	SILVER BUTTONWOOD	18	18	24	POOR	REMOVE
8	*ARDISIA ELLIPTICA	SHOEBUTTON ARDISIA	2	14	8	POOR	REMOVE
9	*ARDISIA ELLIPTICA	SHOEBUTTON ARDISIA	4	12	8	POOR	REMOVE
10	COCOS NUCIFERA	COCONUT PALM	8	26	28	MODERATE	REMAIN
11	COCOS NUCIFERA	COCONUT PALM	9	26	28	MODERATE	REMAIN
12	COCOS NUCIFERA	COCONUT PALM	8	26	28	MODERATE	REMAIN
13	PITHECELLOBIUM DULCE	MADRAS THORN	32	40	60	MODERATE	REMOVE

STEPHEN M. CALLAHAN
FLORIDA RLA #6667206

THRESHOLD
LANDSCAPE WORKSHOP
811 E LAS OLAS BLVD, SUITE 9
FORT LAUDERDALE, FL 33301
OFFICE@THRESHOLDLA.COM
954.361.4721

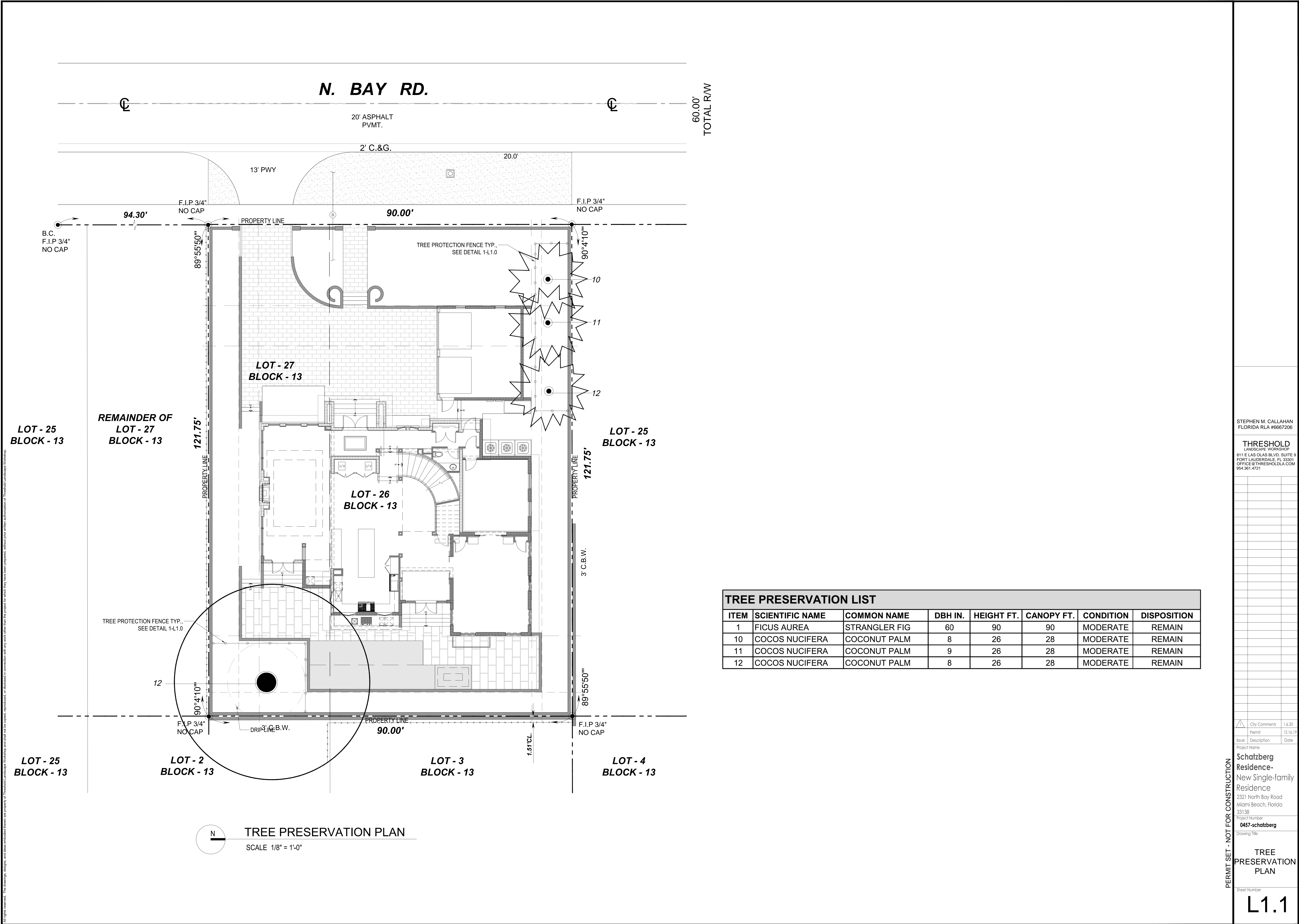
1	City Comments	1.6.20
	Permit	12.16
Issue	Description	Date

Project Name
Schatzberg
Residence-
New Single-family
Residence
2321 North Bay Road
Miami Beach, Florida
33138
Project Number
0457-schatzberg
Drawing Title

TREE
DISPOSITION
PLAN

Sheet Number

L1.0



STEPHEN M. CALLAHAN
FLORIDA RLA #6667206

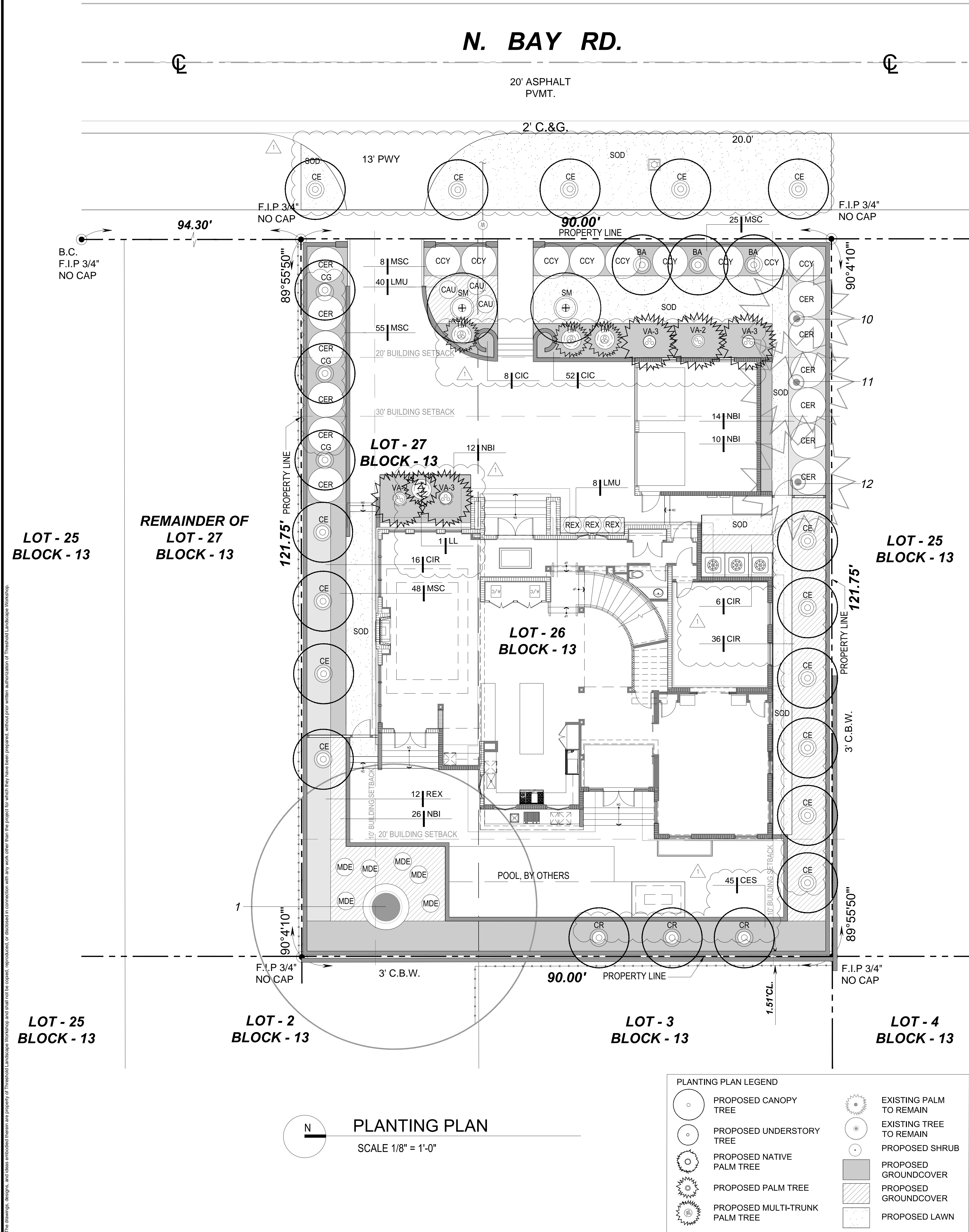
THRESHOLD
LANDSCAPE WORKSHOP
811 E LAS OLAS BLVD, SUITE 9
FORT LAUDERDALE, FL 33301
OFFICE @ THRESHOLD.LA.COM
954.361.4721

City Comments	1.6.20
Permit	12.16.19
Issue	Description
Project Name	
Schatzberg Residence - New Single-family Residence	
2321 North Bay Road	
Miami Beach, Florida	
33138	
Project Number	
0457-schatzberg	
Drawing Title	
TREE PRESERVATION PLAN	
Sheet Number	
L1.1	

PERMIT SET - NOT FOR CONSTRUCTION

L2.0

ALL RIGHTS RESERVED. This drawing, design, and data are the property of Threshold Landscape Workshop and shall not be copied, reproduced or disclosed in connection with any work done for the project for which they have been prepared, without prior written authorization of Threshold Landscape Workshop.



TREE MITIGATION LIST				
NOTES 1. BASED ON ARBORIST REPORT 11.25.2019				
*DENOTES INVASIVE SPECIES				
ITEM	SCIENTIFIC NAME	COMMON NAME	DBH IN.	TREE CATEGORY
2	CALOPHYLLUM ANTILLANUM	SANTA MARIA	57	SPECIMEN
3	MAGNIFERA INDICA	MANGO TREE	26	SPECIMEN
4	MAGNIFERA INDICA	MANGO TREE	10	NON-SPECIMEN
5	MAGNIFERA INDICA	MANGO TREE	8	NON-SPECIMEN
6	CONOCARPUS ERECTUS SERICEUS	SILVER BUTTONWOOD	6	NON-SPECIMEN
7	CONOCARPUS ERECTUS SERICEUS	SILVER BUTTONWOOD	18	SPECIMEN
8	*ARDISIA ELLIPTICA	SHOEBUTTON ARDISIA	N/A	INVASIVE
9	*ARDISIA ELLIPTICA	SHOEBUTTON ARDISIA	N/A	INVASIVE
13	PITHECELLOBIUM DULCE	MADRAS THORN	32	SPECIMEN
TOTAL DBH			157	(54) 2" DBH TREES OR (37) 4" DBH TREES
NOTES				
1. SPECIMEN TREE, 12" CALIPER, PER CITY OF MIAMI BEACH DEFINITION SEC. 46-56				
2. REQUIRED MINIMUM NUMBER OF SPECIES - 5, PER CITY OF MIAMI BEACH CODE SEC. 46-412.A				
3. DEFICIENCIES IN PLANTING AREA TO BE CONTRIBUTED TO CITY OF MIAMI BEACH TREE PRESERVATION TRUST FUND SEC. 46-61.6				

TREE REPLACEMENT CHART						
ITEM	SCIENTIFIC NAME	COMMON NAME	QUANTITY 2" DBH	QUANTITY 4" DBH	TOTAL TREES*	TOTAL DBH
1	BULNESIA ARBOREA	VERAWOOD		3	3	12
2	* CONOCARPUS ERECTUS 'GREEN'	GREEN BUTTONWOOD		15	15	60
3	CAESALPINIA GRANADILLO	BRIDALVEIL TREE		3	3	12
4	*CLUSIA ROSIA	AUTOGRAPH TREE		3	3	12
5	* SWIETENIA MAHAGONI	MAHOGANY		2	2	8
6						
TOTAL *EXCLUDES STREET TREES					26	104
TREE CREDIT					REQUIRED	PROVIDED
1. MINIMUM DBH REPLACEMENT QUANTITY CALCULATIONS, CITY OF MIAMI BEACH CODE SECTION 46-61					157 DBH	104
2.* DENOTES NATIVE TREE, MINIMUM 50% NATIVES REQUIRED PER CITY OF MIAMI BEACH CODE SEC. 46-61					50%	77%
3. REQUIRED MINIMUM NUMBER OF SPECIES, PER CITY OF MIAMI BEACH CODE SEC. 46-412.A					5	5

PLANT LIST				
* Denotes Florida Native Species				
Plants installed pursuant to this Code shall conform to, or exceed, the minimum standards for Florida Number One as provided in the most current edition of "Grades and Standards for Nursery Plants, Part I and II," prepared by the State of Florida Department of Agriculture and Consumer Services.				
Plant quantities are provided for convenience. When discrepancies arise between the Planting Plans and Plant List occur the Planting Plan shall take precedence.				
Contractor shall coordinate on-site planting layout visits with the Landscape Architect two (2) weeks prior to installation.				
Contractor shall warranty all plant material for one (1) year prior to construction.				
QUANTITY	SYMBOL	BOTANICAL NAME	COMMON NAME	SIZE
PALMS				
1	LL	LATANIA LONTAROIDES	RED LATAN PALM	FIELD GROWN, 6' HT. X 5' SP. PALNTED, FULL HEAD, HEAVY TRUNK
2	VA-2	VEITCHIA ARECINA	MONTGOMERY PALM	DOUBLE FIELD GROWN 12-14' PLANTED HT. MIN., HEAVY TRUNKS
3	VA-3	VEITCHIA ARECINA	MONTGOMERY PALM	TRIPLE FIELD GROWN 12-14' PLANTED HT. MIN., HEAVY TRUNKS
3	TM	* THRINAX MORRISII	KEY THATCH PALM	FIELD GRWON, 4-5' PLANTED HT. MIN., FULL, MULT, TRIPLE
TREES				
3	BA	BULNESIA ARBOREA	VERAWOOD	FIELD GROWN 4" CAL. 16-18' HT. X 8' SP. MIN.
15	CE	* CONOCARPUS ERECTUS 'GREEN'	GREEN BUTTONWOOD	FIELD GROWN 4" CAL. 16-18' HT. X 8' SP. MIN.
3	CG	CAESALPINIA GRANADILLO	BRIDALVEIL TREE	FIELD GROWN 4" CAL. 16-18' HT. X 8' SP. MIN.
3	CR	*CLUSIA ROSIA	AUTOGRAPH TREE	FIELD GROWN 4" CAL. 16-18' HT. X 8' SP. MIN.
2	SM	* SWIETENIA MAHAGONI	MAHOGANY	FIELD GROWN 4" CAL. 16-18' HT. X 8' SP. MIN.
SMALL TREES AND LARGE SHRUBS				
9	CCY	* CAPPARIS CYNOPHALLOPHORA	JAMAICAN CAPER	25 GALLON, 6' HT MIN., 4' SPREAD MIN., MULTI-TRUNK FULL TO BASE
12	CER	* CONOCARPUS ERECTUS 'GREEN'	GREEN BUTTONWOOD	25 GALLON, 6' HT MIN., 4' SPREAD MIN., MULTI-TRUNK FULL TO BASE
SHRUBS AND ACCENTS				
58	CIR	* CHRYSOBALANUS ICACO 'RED TIP'	RED TIP COCOPLUM	7 GALLON 36" PLANTED HT. MIN., FULL TO BASE
62	NBI	NEPHROLEPIS BISERRATA	GIANT SWORD FERN	3 GALLON 24" PLANTED HT. MIN., FULL TO BASE, 36" OC.
45	CES	* CONOCARPUS ERECTUS 'SERICEUS'	SILVER BUTTONWOOD	7 GALLON 36" PLANTED HT. MIN., FULL TO BASE
15	REX	RHAPIS EXCELSA	LADY PALM	7 GALLON, 36" PLANTED HT., CLUMP, 6 CANE MIN., FULL HEADS
3	CAU	CRINUM AUGUSTUM 'QUEEN EMMA'	CRINUM LILY 'QUEEN EMMA'	7 GALLON 36" PLANTED HT. MIN., FULL
6	MDE	MONSTERA DELICIOSA	MEXICAN BREADFRUIT	7 GALLON 36" PLANTED HT. MIN., FULL
GROUND COVER				
60	CIC	* CHRYSOBALANUS ICACO 'HORIZONTAL'	HORIZONTAL COCOPLUM	3 GALLON 18" PLANTED HT. MIN., FULL TO BASE, 24" OC.
48	LMU	LIRIOPE MUSCARI 'EVERGREEN GIANT'	GIANT LILYTURF	1 GALLON, FULL AND 25% FLOWERING MIN., 18" OC.
136	MSC	MICROSORUM SCOLOPENDRIUM	WART FERN	1 GALLON 10" PLANTED HT. MIN., FULL TO BASE, 14" OC.
VINES				
24	FPU	FICUS PUMILA	CREEPING FIG IVY	1 GALLON 6-8" RUNNERS MIN., GREEN, FULL, LA TO LOCATE
MULCH AND SOD				
TBD		RECYCLED MULCH	NO DYES, NO CYPRESS, 3" MIN. THICK	QUANTITY CALCULATED BY CONTRACTOR
TBD		EMPIRE ZOYSIA	TURFGRASS	QUANTITY CALCULATED BY CONTRACTOR

REMOVED HORIZONTAL COCOPLUM AND PERENNIAL PEANUT FROM R.O.W.

NOTE: REQUIRED STREET TREES ARE SUBJECT TO THE REVIEW AND APPROVAL OF THE CIP OFFICE AND PW/GREENSPACE DIVISION PRIOR TO INSTALLATION.

STEPHEN M. CALLAHAN
FLORIDA RLA #6667206

THRESHOLD
LANDSCAPE WORKSHOP
811 E LAS OLAS BLVD. SUITE 9
FORT LAUDERDALE, FL 33301
OFFICE@THRESHOLDLA.COM
954.361.4721

City Comments 1.6.20

Permit 12.16.19

Issue Description Date

Project Name

Schatzberg

Residence-

New Single-family

Residence

2321 North Bay Road

Miami Beach, Florida

33138

Project Number

0457-Schatzberg

Drawing Title

Sheet Number

L3.0

PERMIT SET - NOT FOR CONSTRUCTION

PLANTING PLAN



13. CLEANUP

13.1. UPON COMPLETION OF ALL PLANTING WORK AND BEFORE FINAL ACCEPTANCE, THE CONTRACTOR SHALL REMOVE ALL MATERIAL, EQUIPMENT AND DEBRIS RESULTING FROM THE WORK. ALL PAVED AREAS SHALL BE BROOM CLEANED AND THE SITE LEFT IN A NEAT AND ACCEPTABLE CONDITION AS APPROVED BY THE LANDSCAPE ARCHITECT.

14. WARRANTY

14.1. THE LIFE AND SATISFACTORY CONDITION OF ALL PLANT MATERIAL INSTALLED BY THE LANDSCAPE CONTRACTOR SHALL BE GUARANTEED BY THE CONTRACTOR FOR A MINIMUM OF ONE (1) CALENDAR YEAR COMMENCING AT THE TIME OF CERTIFICATION OF ACCEPTABILITY BY THE OWNER.

14.2. THE LIFE AND SATISFACTORY CONDITION OF ALL SOD INSTALLED BY THE LANDSCAPE CONTRACTOR SHALL BE GUARANTEED BY THE CONTRACTOR FOR A MINIMUM OF NINETY (90) CALENDAR DAYS, COMMENCING AT THE TIME OF CERTIFICATION OF ACCEPTABILITY BY THE OWNER OR OWNER REPRESENTATIVE.

14.3. REPLACEMENT: ANY PLANT NOT IN A HEALTHY OR THRIVING GROWING CONDITION SHALL BE REMOVED AND REPLACED. TREES AND PALMS GIVEN A PERIOD OF NINETY (90) DAYS BEFORE REMOVAL TO ALLOW THE CONTRACTOR TO RESURRECT THE TREE IN QUESTION AND BRING IT TO A THRIVING, HEALTHY CONDITION. ALL REPLACEMENTS SHALL BE PLANTS OF LIKE KIND, CONDITION, SIZE AS SPECIFIED IN THE PLANT LIST. THEY SHALL BE FURNISHED, PLANTED, AND MULCHED AS SPECIFIED. ANY REPAIRS FROM REPLACEMENT ARE THE RESPONSIBILITY OF THE CONTRACTOR AT NO COST TO OWNER. REPLACEMENT MATERIAL SHALL BE GUARANTEED FOR ONE (1) YEAR PERIOD FROM THE DAY OF REPLACEMENT ACCEPTANCE BY THE OWNER.

15. GRADING AND DRAINAGE NOTES

15.1. PRIOR TO COMMENCING WORK, THE CONTRACTOR SHALL NOTIFY ALL UTILITY COMPANIES IN ACCORDANCE WITH THE DIG SAFE NOTIFICATION PROCEDURES PROMOTED BY THE UTILITY COMPANIES IN FLORIDA BY CALLING 811.

15.2. CONTRACTOR SHALL BLEND NEW EARTHWORK SMOOTHLY INTO EXISTING PROVIDING VERTICAL CURVES OR ROUNDINGS AT ALL TOP AND BOTTOM OF SLOPES.

15.3. CONTRACTOR SHALL PITCH EVENLY BETWEEN SPOT GRADES. ALL PAVED AREAS MUST PITCH TO DRAIN AT A MINIMUM SLOPE OF ONE-EIGHT INCH (1/8") PER FOOT.

16. ROOT CONTROL BARRIER

16.1. ROOT CONTROL PRODUCT SHALL BE A BIOLOGICAL BARRIER PRODUCT. PRODUCT SPECIFICATIONS

