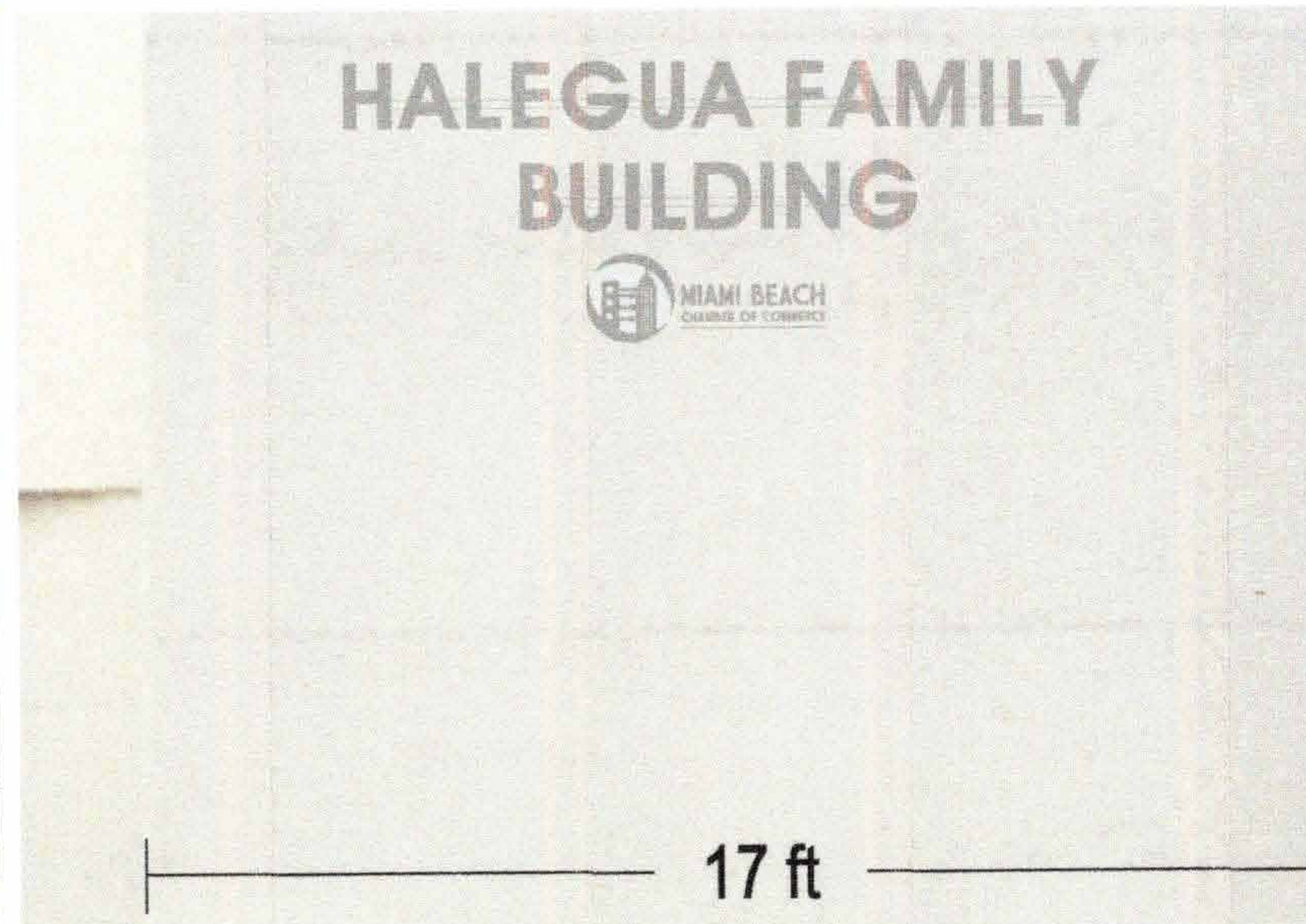


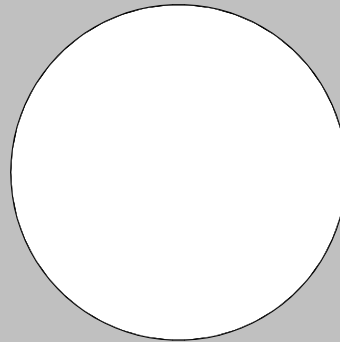


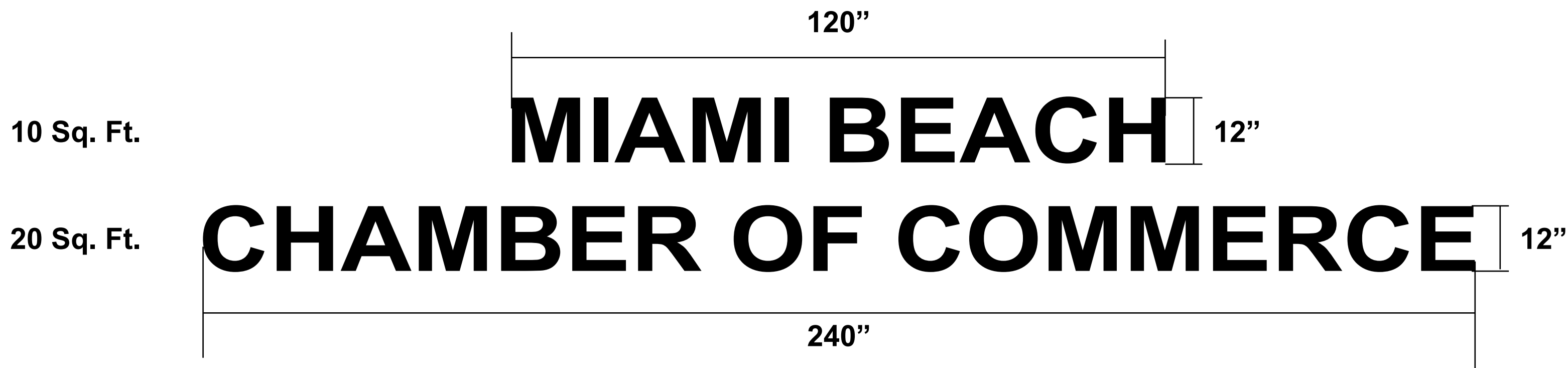
MIAMI BEACH CHAMBER OF COMMERCE
HALEGUA FAMILY BUILDING SIGNAGE

1920 MERIDIAN AVE. MIAMI BEACH, FL 33139 - FINAL SUBMITTAL: DECEMBER 9TH, 2019

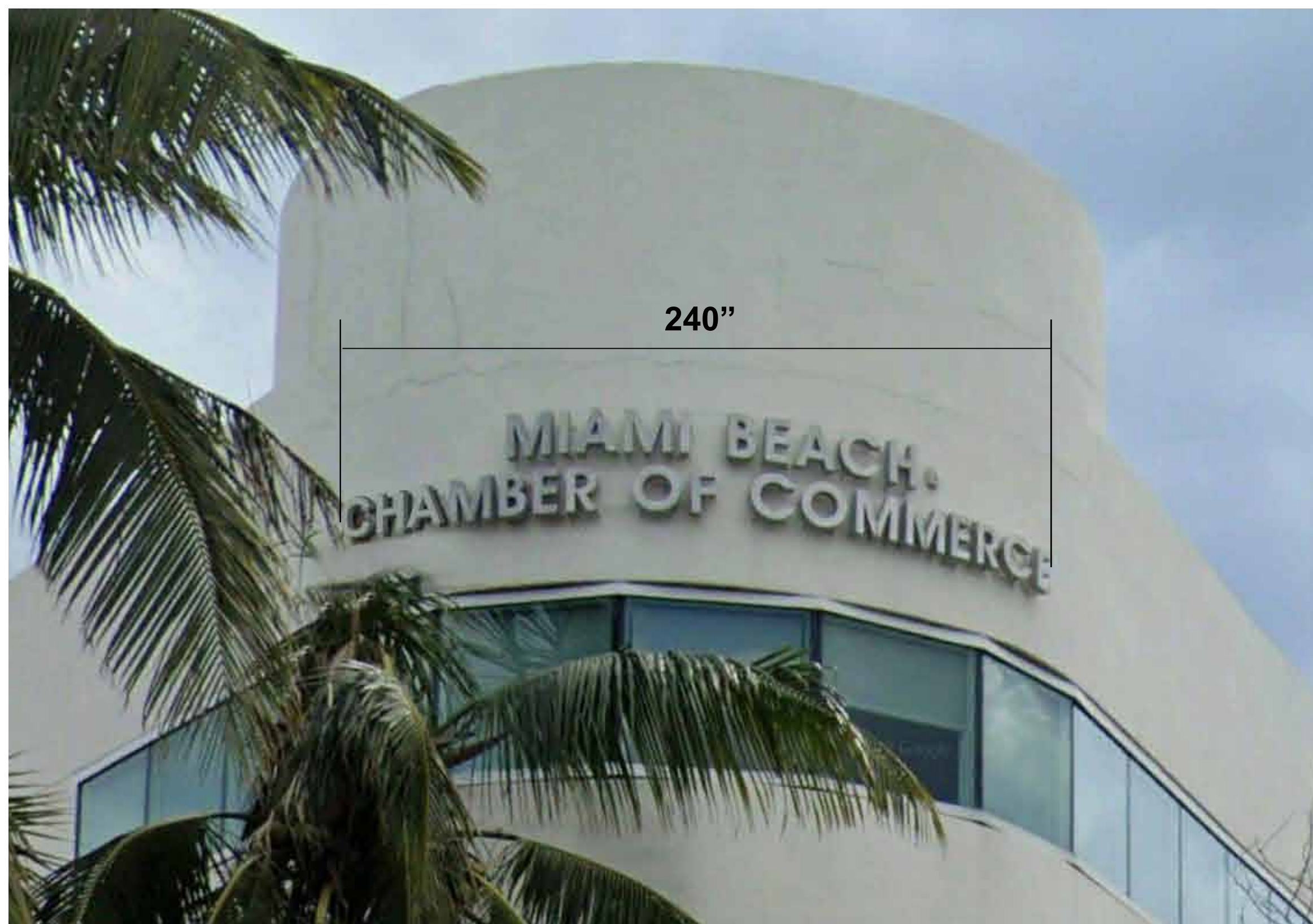
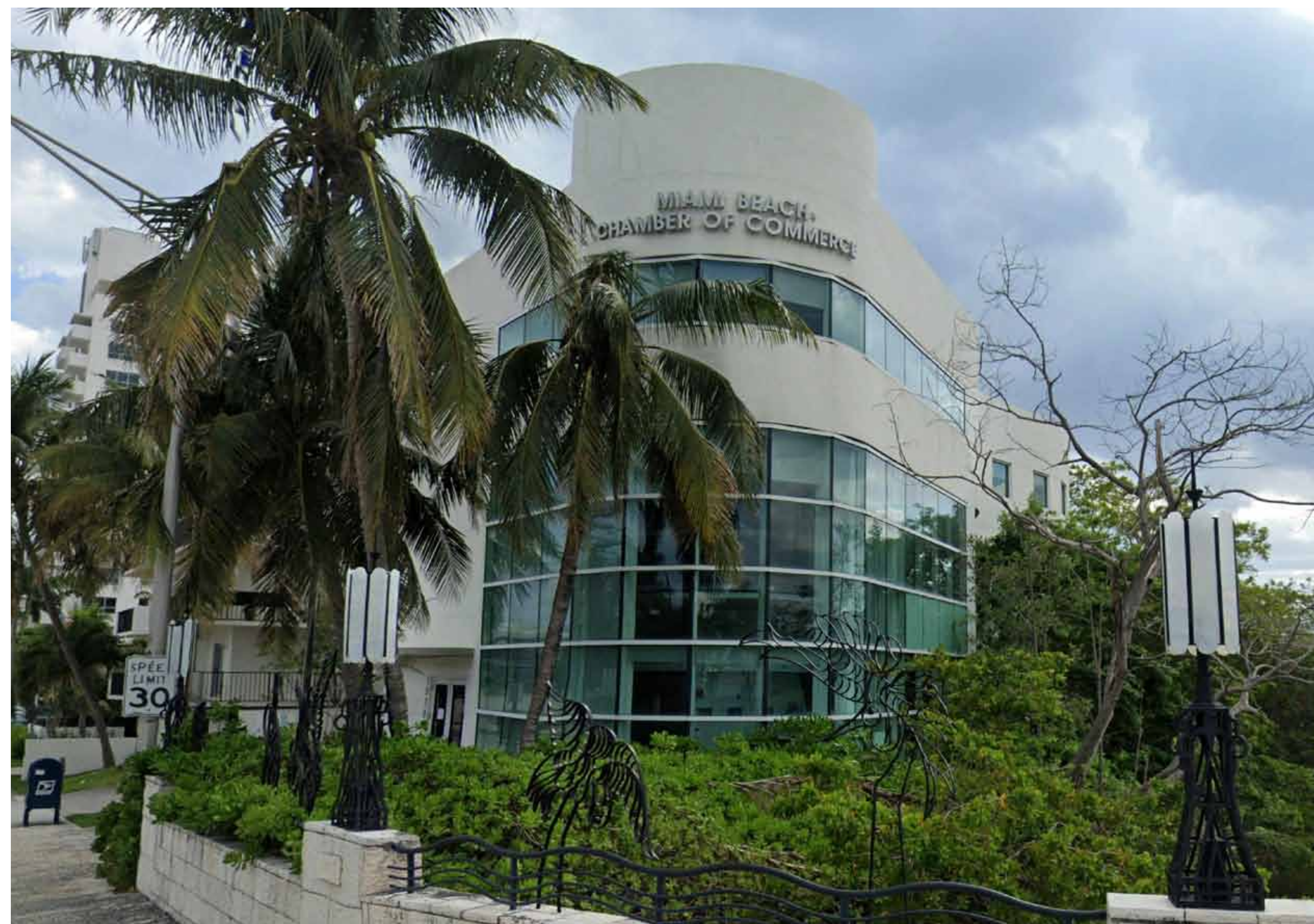
ISSUE DATE: 12.09.19		
No.	Date	Description
All ideas, designs, arrangements, plans and specifications indicated or represented by this drawing are owned by and are the property of Borges + Associates, P.A., and were created, evolved and developed for use on and in connection with the specified project. No copies, transmissions, reproductions, or electronic manipulation of any portion of these drawings in whole or in part are to be made without the express written permission of Borges + Associates, P.A.		
All copyrights reserved © 2019		
<div><div>borges</div><div>architects + associates</div></div>		
architecture urban-planning interior design		
999 Brickell Ave., Suite 700 • Miami, Florida 33131 305.374.9216 phone • 305.374.9217 fax www.borgesarchitects.com		
REINALDO BORGES, ARCHITECT		
<div>AA26000765 AR0016290</div>		
Project Team		
Project Name		
MBCC		
1920 MERIDIAN AVE Miami Beach, FL 33139 FOLIO # 02-3234-007-0130		
Project Number 00-00000		
Drawing Name		
COVER		
Scale:	Drawing Number	
N.T.S.	A-000	



ISSUE DATE: 12.09.19		
No.	Date	Description
All ideas, designs, arrangements, plans and specifications indicated or represented by this drawing are owned by, and are the property of Borges + Associates, P.A., and were created, evolved and developed for use on and in connection with the specified project. No copies, transmissions, reproductions, or electronic manipulation of any portion of these drawings in whole or in part are to be made without the express written permission of Borges + Associates, P.A.		
All copyrights reserved © 2019		
<div><div>borges/architects + associates</div><div>architectureurban-planninginterior design</div><div>999 Brickell Ave., Suite 700 • Miami, Florida 33131 305.374.9216 phone • 305.374.9217 fax www.borgesarchitects.com</div><div>REINALDO BORGES, ARCHITECT</div><div></div><div>AA26000765 AR0016290</div></div>		
Project Team		
Project Name		
MBCC		
1920 MERIDIAN. AVE Miami Beach, FL 33139 FOLIO # 02-3234-007-0130		
Project Number 00-00000		
Drawing Name		
EXISTING SIGNAGE		
Scale:	Drawing Number	
N.T.S.	A-003	



Total Square Footage: 30 Sq. Ft.



South- West Corner - Dave Blvd & Meridian Ave

Notes:

Overall Total Aggregate Area: 30 Sq. Ft.

- "MIAMI BEACH": 120" w x 12" h = 10 sq. ft.
- "CHAMBER OF COMMERCE: 240" w x 12" h = 20 sq. ft.

Site Location

1920 Meridian Ave.
Miami Beach, FL 33139
Folio Number: 02-3234-007-0130



ISSUE DATE: 12.09.19		
No.	Date	Description
All ideas, designs, arrangements, plans and specifications indicated or represented by this drawing are owned by and are the property of Borges + Associates, P.A., and were created, evolved and developed for use on and in connection with the specified project. No copies, transmissions, reproductions, or electronic manipulation of any portion of these drawings in whole or in part are to be made without the express written permission of Borges + Associates, P.A.		
All copyrights reserved © 2019		
borges architects + associates		
architecture urban-planning interior design		
999 Brickell Ave., Suite 700 • Miami, Florida 33131 305.374.9216 phone • 305.374.9217 fax www.borgesarchitects.com		
REINALDO BORGES, ARCHITECT		
AA26000765 AR0016290		
Project Team		
Project Name		
MBCC		
1920 MERIDIAN. AVE Miami Beach, FL 33139 FOLIO # 02-3234-007-0130		
Project Number 00-00000		
Drawing Name		
EXISTING SIGNAGE		
Scale:	Drawing Number	
N.T.S.	A-004	

Letter shall be Grey (shown in black for detail)

270"

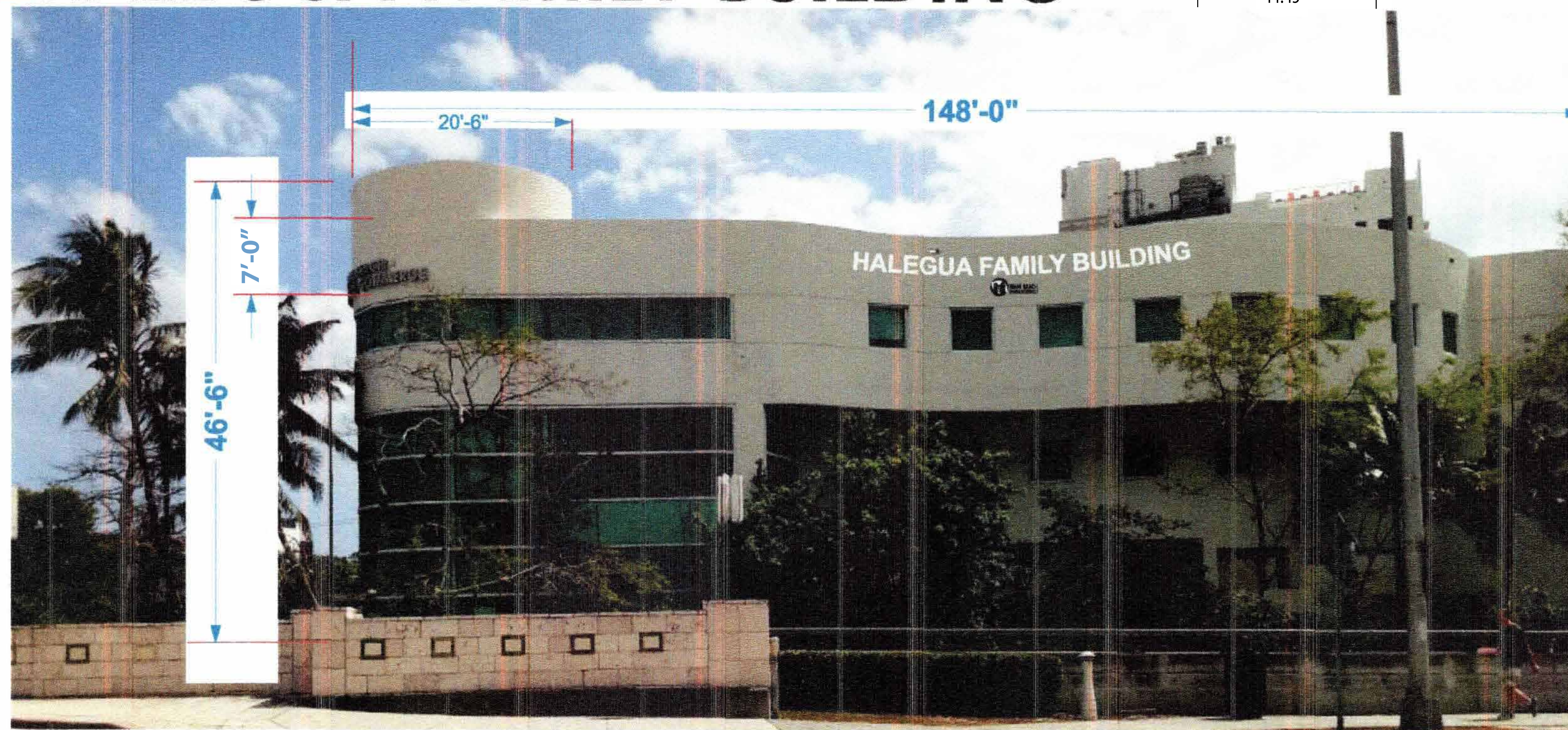
4,302 sq.in (30 Sq.ft.)

16"

HALEGUA FAMILY BUILDING



15.45" x 44.45" = 686.7 Sq.in (4.7 Sq.ft)



South-West Elevation

Dade Blvd View

NOTES:

15.45" x 44.45" = 686.7 Sq.in (4.7 Sq.ft)

- Overall Total Aggregate Area:
 - "HALEGUA FAMILY BUILDING": 270"w X 16"h = 4,302 sq.in (30 Sq.ft.)
 - 30 Sq.ft. + 4.7 Sq.ft. = **34.7 Sq.ft. TOTAL**
- 3/16" x 3.5" Studs, Drilled into building wall surface, minimum of 3 studs per letter (2 for dot)
- Letters are installed with 2" standoff from building
- a 1" standoff for the non-illuminated MBCC logo (small Letters may have 1/8" studs)

All dimensions in inches unless otherwise noted.

Site Location

1920 Meridian Ave.
Miami Beach, FL 33139
Folio Number: 02-3234-007-0130



ISSUE DATE: 12.09.19

No.	Date	Description
-----	------	-------------

All ideas, designs, arrangements, plans and specifications indicated or represented by this drawing are owned by and are the property of Borges + Associates, P.A., and were created, evolved and developed for use on and in connection with the specified project. No copies, transmissions, reproductions, or electronic manipulation of any portion of these drawings in whole or in part are to be made without the express written permission of Borges + Associates, P.A.

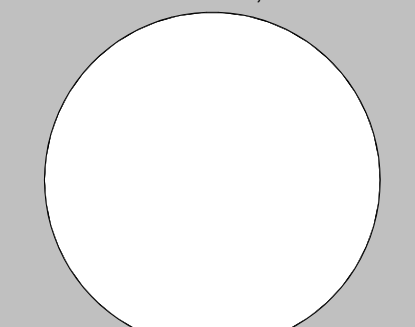
All copyrights reserved © 2019

borges architects
+ associates

architecture urban-planning interior design

999 Brickell Ave., Suite 700 • Miami, Florida 33131
305.374.9216 phone • 305.374.9217 fax
www.borgesarchitects.com

REINALDO BORGES, ARCHITECT



AA26000765
AR0016290

Project Team

Project Name

MBCC

1920 MERIDIAN AVE
Miami Beach, FL 33139
FOLIO # 02-3234-007-0130

Project Number 00-00000

Drawing Name


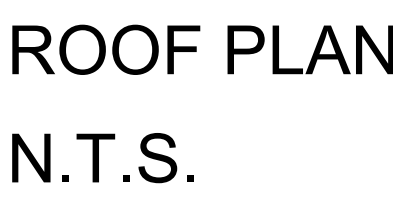
SIGNAGE DETAILS

Scale:

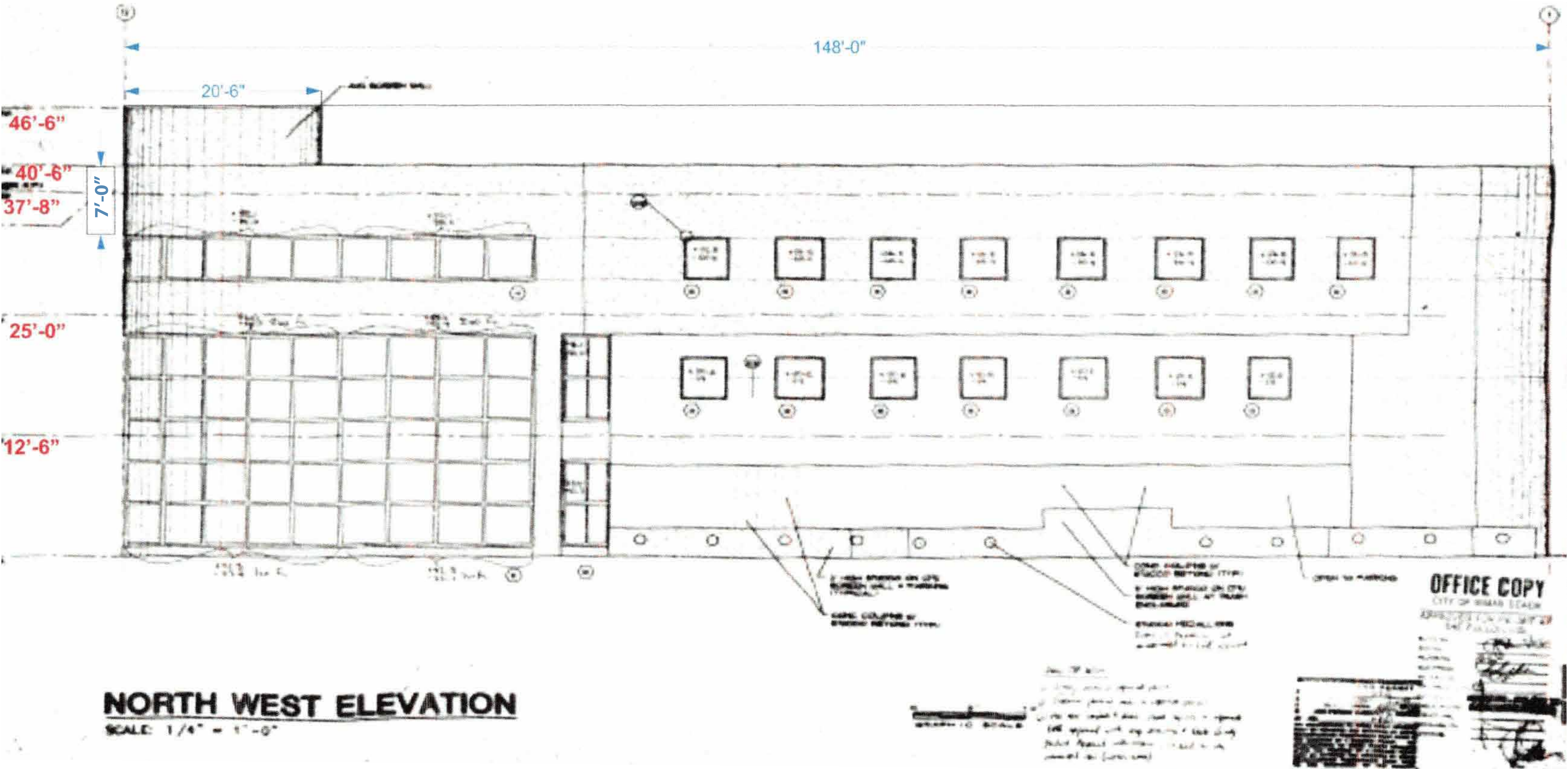
N.T.S.

Drawing Number

A-100



Scale:	Drawing Number
N.T.S.	A-101



ISSUE DATE: 12.09.19		
No.	Date	Description
All ideas, designs, arrangements, plans and specifications indicated or represented by this drawing are owned by and are the property of Borges + Associates, P.A., and were created, evolved and developed for use on and in connection with the specified project. No copies, transmissions, reproductions, or electronic manipulation of any portion of these drawings in whole or in part are to be made without the express written permission of Borges + Associates, P.A.		
All copyrights reserved © 2019		
borges architects + associates		
architecture urban-planning interior design		
999 Brickell Ave., Suite 700 • Miami, Florida 33131 305.374.9216 phone • 305.374.9217 fax www.borgesarchitects.com		
REINALDO BORGES, ARCHITECT		
AA26000765 AR0016290		
Project Team		
Project Name		
MBCC		
1920 MERIDIAN, AVE Miami Beach, FL 33139 FOLIO # 02-3234-007-0130		
Project Number 00-00000		
Drawing Name		
SIGNAGE DETAILS		
Scale:	Drawing Number	
N.T.S.	A-102	