



6391 Sprint Parkway
Overland Park, KS 66211



5449 Bells Ferry Road
Acworth, Georgia 30102
770-701-2500 Fax 770-701-2501
Karl R. Kratina, P.E. 73706

PROJECT NO: EUSP0101
DRAWN BY: N. KINCAID
CHECKED BY: W. WEST

B	11.07.19	UPDATED PER CITY COMMENTS
A	10.21.19	FOR REVIEW



THIS ITEM HAS BEEN DIGITALLY SIGNED AND SEALED BY KARL R. KRATINA ON THE DATE ADJACENT TO THE SEAL. PRINTED COPIES OF THIS DOCUMENT ARE NOT CONSIDERED SIGNED AND SEALED AND THE SIGNATURE MUST BE VERIFIED ON ANY ELECTRONIC COPIES.

IT IS A VIOLATION OF THE LAW FOR ANY PERSON, UNLESS THEY ARE ACTING UNDER THE DIRECTION OF A LICENSED PROFESSIONAL ENGINEER, TO ALTER THIS DOCUMENT

M190XSM43-H
1220 LINCOLN RD
MIAMI BEACH, FL 33139

SHEET TITLE
PHOTO SIM

SHEET NUMBER
PS-1



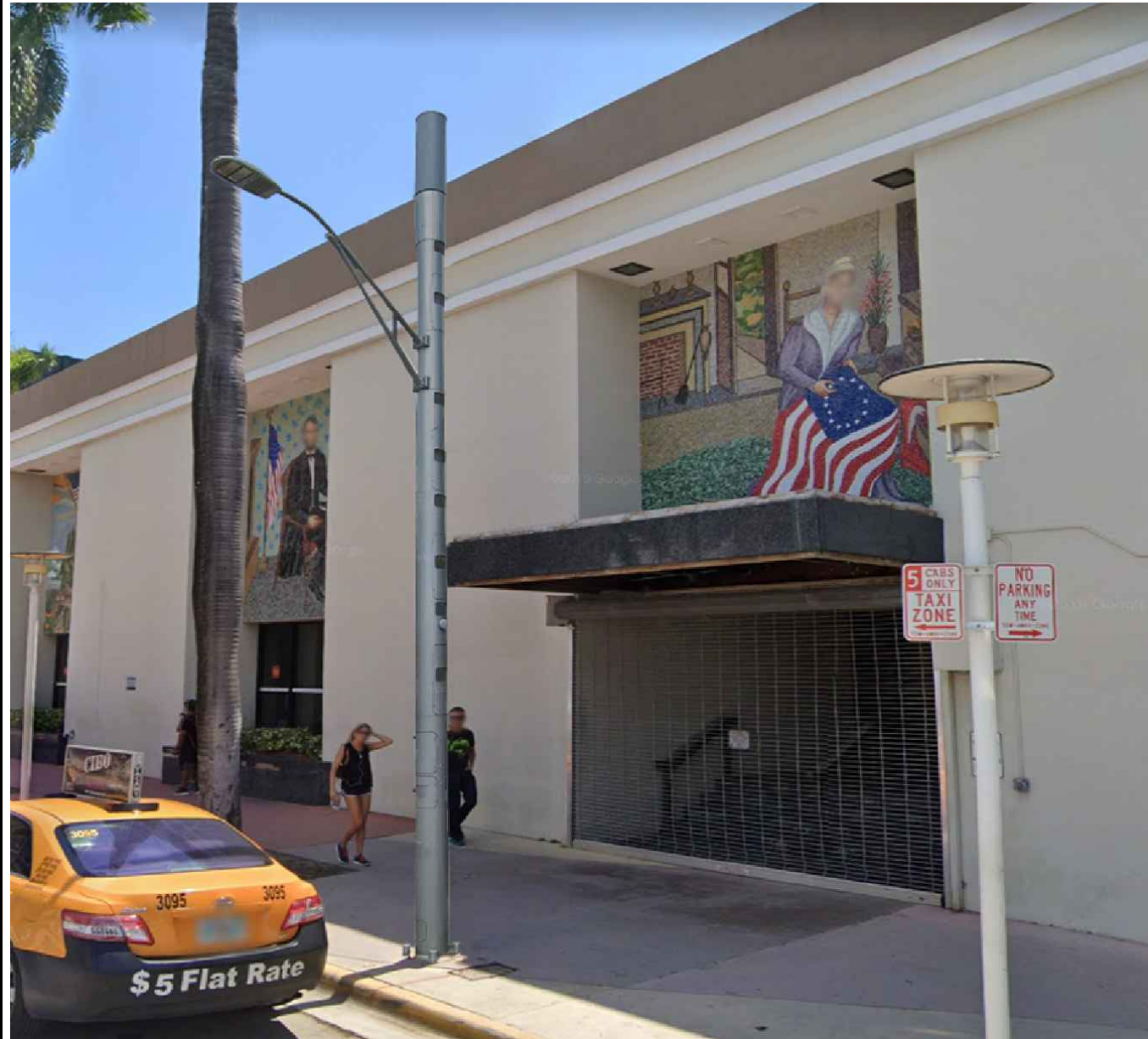
EXISTING SIDE VIEW
SCALE: NOT TO SCALE
1

PROPOSED SIDE VIEW
SCALE: NOT TO SCALE
2



EXISTING FRONT VIEW
SCALE: NOT TO SCALE

1



PROPOSED FRONT VIEW
SCALE: NOT TO SCALE

2



6391 Sprint Parkway
Overland Park, KS 66211



5449 Bells Ferry Road
Acworth, Georgia 30102
770-701-2500 Fax 770-701-2501
Karl R. Kratina, P.E. 73706

PROJECT NO:	EUSP0101
DRAWN BY:	N. KINCAID
CHECKED BY:	W. WEST

B	11.07.19	UPDATED PER CITY COMMENTS
A	10.21.19	FOR REVIEW



THIS ITEM HAS BEEN DIGITALLY SIGNED AND SEALED BY KARL R. KRATINA ON THE DATE ADJACENT TO THE SEAL. PRINTED COPIES OF THIS DOCUMENT ARE NOT CONSIDERED SIGNED AND SEALED AND THE SIGNATURE MUST BE VERIFIED ON ANY ELECTRONIC COPIES.

IT IS A VIOLATION OF THE LAW FOR ANY PERSON, UNLESS THEY ARE ACTING UNDER THE DIRECTION OF A LICENSED PROFESSIONAL ENGINEER, TO ALTER THIS DOCUMENT

M190XSM43-H
1220 LINCOLN RD
MIAMI BEACH, FL 33139

SHEET TITLE
PHOTO SIM

SHEET NUMBER
PS-2