

36	COU	Coccoloba uvifera / Seagrape	3-4' ht, 2' spr, 7 gal, full	No
36	MYF	Myrcianthes fragrans / Simpson Stopper	3-4' ht, 2' spr, 7 gal, full	Yes
21	CHI	Chrysobalanus icaco / Red Tip Cocoplum	2' ht, 1.5' spr, 3 gal, full	Yes
9	ELD	Elaeocarpus decipiens / Japanese Blueberry	2.5' ht, 1.5' spr, 7 gal, full.	No
102 Req'd Shrubs, 93 Native				No
3	VM	Veitchia montgomeriana / Veitchia Palm	16', 20', 24' oa hts	No
6	SP	Sabal palmetto / Sabal Palm	16'-24' cts, slick	Yes
20	PHB	Philodendron Burle Marx / Burle Marx	18" ht, 18" spr, 3 gal, full	No

**H.L. Martin, Landscape Architect, P.A.**  
**LC# 26000404 LA #0001722**  
**5965 SW 38th Street, Miami, Florida 33155**  
**305 790-4372, himartin@bellsouth.net**  
**Herbert Lester Martin, Landscape Architect**

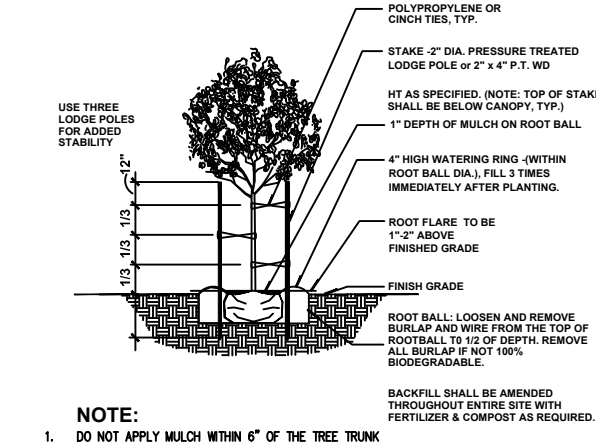
LA-01

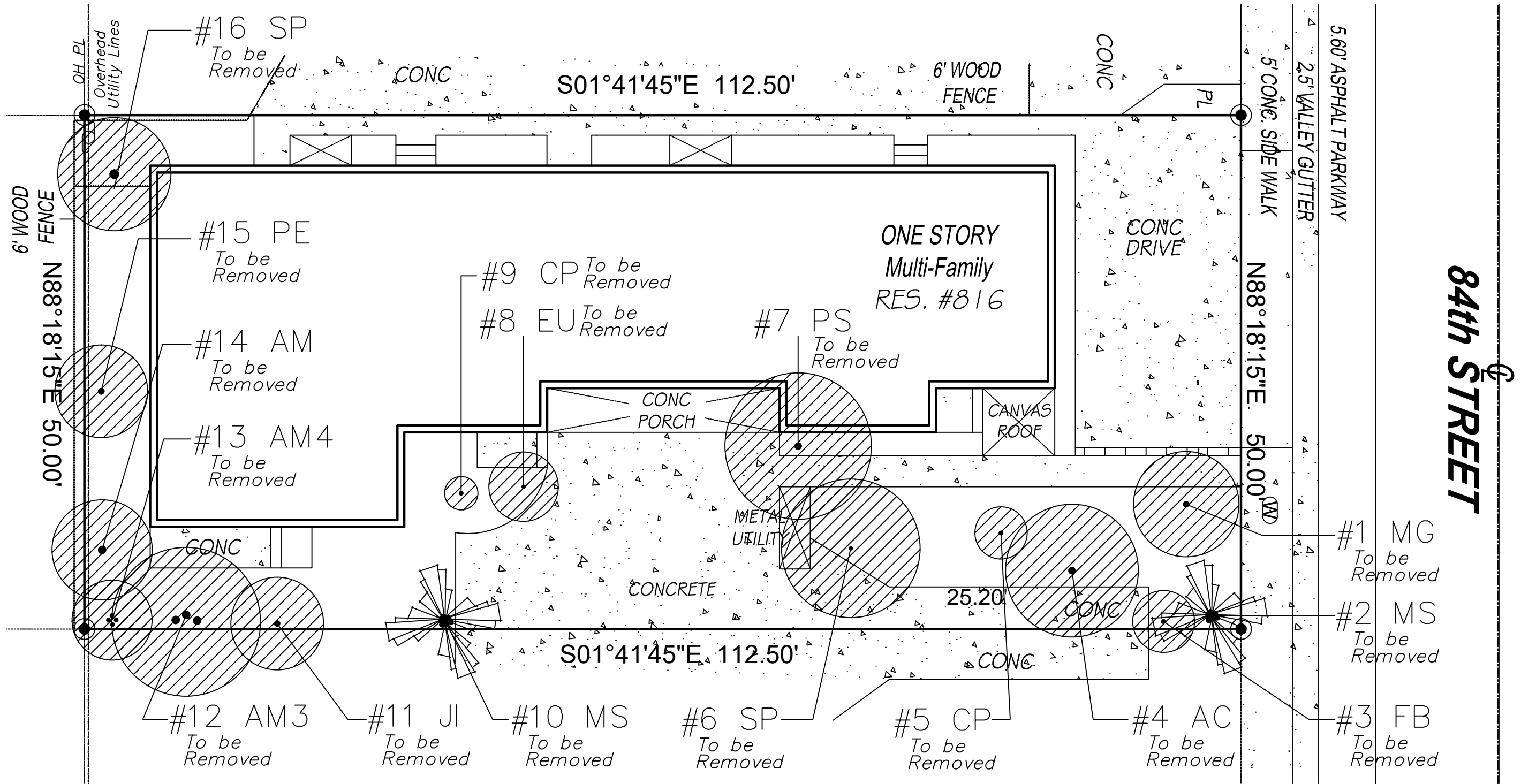
LANDSCAPE  
PLAN

---

Project No. 190032

State of Florida  
Architect of Record  
Ariel N. Villella  
License # AR99560  
6000 Collins Ave. #307  
Miami Beach, FL 33140





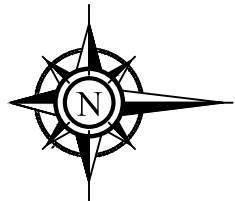
Tree Survey List-Existing to Remain & Relocated							
Num	Botanical / Common Name	Disposition	HT	SPR	Description DBH	Condition	Notes
#1 MG	Malpighia glabra / Barbados Cherry	Remove	10'	8'	2"	Good	
#2 MS	Musa species / Banana	Remove	8'	8'	12"	Good	Cluster
#3 FB	Ficus binnendijkii / Ficus Alii	Remove	6'	5'	multi	Moderate	Hedge/Shrub
#4 AC	Averrhoa carambola / Starfruit	Remove	8'	7'	2"	Good	Sum of branches
#5 CP	Carica papaya / Papaya	Remove	15'	4'	4"	Good	
#6 SP	Spondias purpurea / Mombin	Remove	12'	8'	6"	Good	Sum of branches
#7 PS	Pouteria sapota / Mamey	Remove	17'	8'	6"	Good	Sum of branches
#8 EU	Eugenia uniflora / Surinam Cherry	Remove	6'	5'	2"	Invasive	Sum of branches
#9 CP	Carica papaya / Papaya	Remove	8'	3'	3"	Good	

#10 MS	Musa species / Banana	Remove	8'	8'	12"	Good	Cluster
#11 JI	Jatropha integririma / Jatropha	Remove	8'	8'	3"	Moderate	Sum of branches
#12 AM3	Adonidia merrillii / Christmas Palm, (3)	Remove	25'	12'	3@6"	Good	
#13 AM4	Adonidia merrillii / Christmas Palm, (4)	Remove	15'	10'	4@3"	Good	
#14 AM	Adonidia merrillii / Christmas Palm	Remove	18'	8'	16"	Moderate	
#15 PE	Ptychosperma elegans / Alexander Palm	Remove	20'	10'	3"	Moderate	
#16 SP	Sabal palmetto / Sabal Palm	Remove	20'	10'	13"	Moderate	

Note: There are no (0) existing trees or palms to remain.



Existing Tree or Palm to be removed.



LA-01 Landscape Plan  
LA-02 Landscape Notes,  
Details & Legend  
LA-03 Tree Survey &  
Disposition Plan