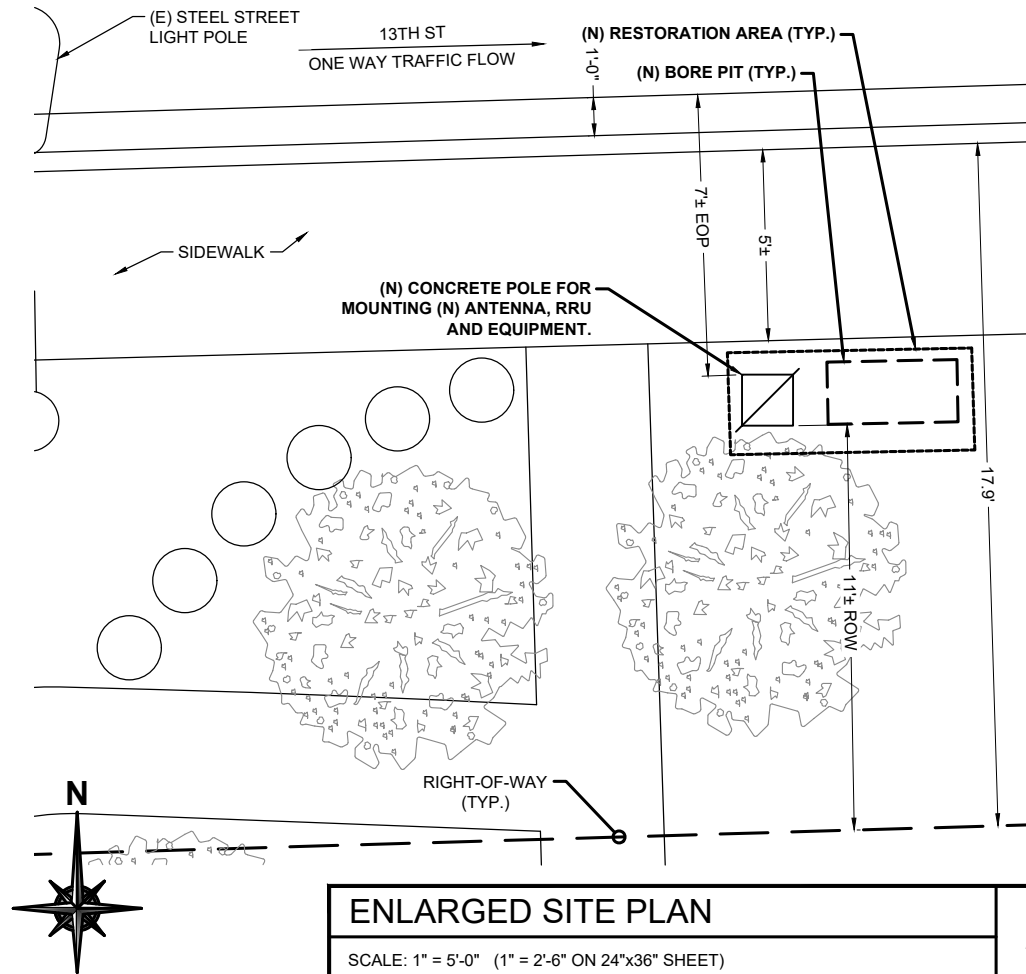


OVERALL SITE PLAN

SCALE: 1" = 20'-0" (1" = 10'-0" ON 24"x36" SHEET)

1



ENLARGED SITE PLAN

SCALE: 1" = 5'-0" (1" = 2'-6" ON 24"x36" SHEET)

2

SYMBOL LEGEND

- (MH) MANHOLE
- (H) HYDRANT
- WOOD OR STEEL LIGHT POLE
- WOOD OR STEEL UTILITY POLE
- CONCRETE LIGHT POLE
- CONCRETE UTILITY POLE
- O/H OVERHEAD UTILITIES
- P UNDERGROUND POWER
- F UNDERGROUND FIBER
- GROUND CONDUCTOR
- X CHAIN LINK FENCE
- WOODEN FENCE
- RIGHT-OF-WAY

CONSTRUCTION NOTES

- NOTES:
- CONTRACTOR SHALL MAINTAIN UNINTERRUPTED ACCESS TO ALL DRIVEWAYS, SIDE STREETS AND WALKWAYS AT ALL TIMES UNLESS OTHERWISE PERMITTED.
 - CONTRACTOR SHALL COMPLY WITH THE MAINTENANCE OF TRAFFIC (M.O.T) PLAN FOR PEDESTRIAN TRAFFIC AND WORK WITHIN THE RIGHT-OF-WAY, INCLUDING VEHICLE PARKING AND EQUIPMENT STAGING.
 - CONTRACTOR SHALL RESTORE ANY DISTURBED AREAS TO ORIGINAL CONDITION OR BETTER, INCLUDING BUT NOT LIMITED TO, LANDSCAPING, SOD, PAVING, SIDEWALK REPAIR AND OR FENCE REPAIR.
 - LOCATE AND MARK ANY AND ALL UTILITIES PRIOR TO START OF CONSTRUCTION.
 - REMOVE/ REPLACE SIDEWALK TO NEAREST CONTROL OR EXPANSION JOINT.



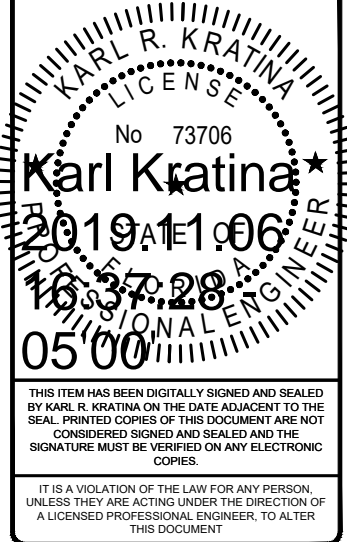
6391 Sprint Parkway
Overland Park, KS 66211



5449 Bells Ferry Road
Acworth, Georgia 30102
770-701-2500 Fax 770-701-2501
Karl R. Kratina, P.E. 73706

PROJECT NO: EUSP0101
DRAWN BY: S. BOUNNAKHOM
CHECKED BY: W. WEST

B 11.06.19 UPDATED PER CITY COMMENTS
A 09.10.19 FOR REVIEW



M190XSM21-E
1248 13TH ST
MIAMI BEACH, FL 33139

SHEET TITLE
SITE PLAN

SHEET NUMBER
C-1