

LEGEND	
	EXISTING DRAINAGE MANHOLE (FOOT WHERE SHOWN)
	EXISTING ELECTRIC MANHOLE
	EXISTING CATCH BASIN
	EXISTING ELEC. HANDHOLE
	EXISTING TRAFFIC SIGNAL POLE
	EXISTING WATER VALVE
	EXISTING SEWER MANHOLE
	EXISTING SIGN
	EXISTING STREET LIGHT
	EXISTING WATER METER
	EXISTING MANHOLE
	EXIST. TRAFFIC SIGNAL POLE
	EXIST. WOOD POWER POLE

CROWN CASTLE
SMALL WIRELESS FACILITIES
DRB 19-0431 (FL 6432)
3792 Royal Palm Ave.

PROPOSED SITE PLAN
JULY 25, 2019
N.T.S.

R.J. HEISENBOTTLE ARCHITECTS, P.A.
2199 PONCE DE LEON BLV, CORAL GABLES, FLORIDA 33134
PHONE: 305.446.7799 / FAX: 305.446.9275
FLORIDA REGISTRATION NUMBER: AR 0010865

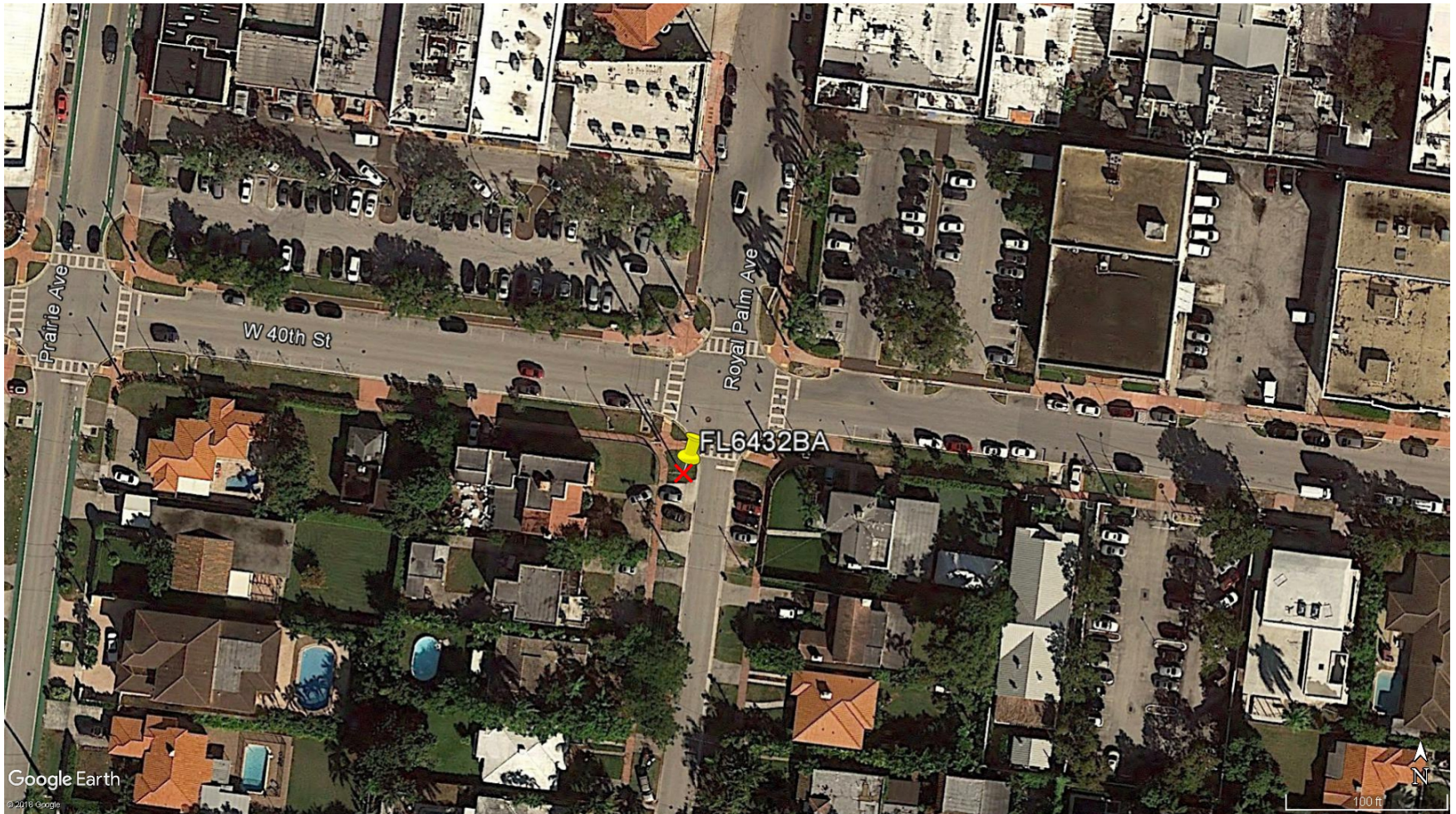


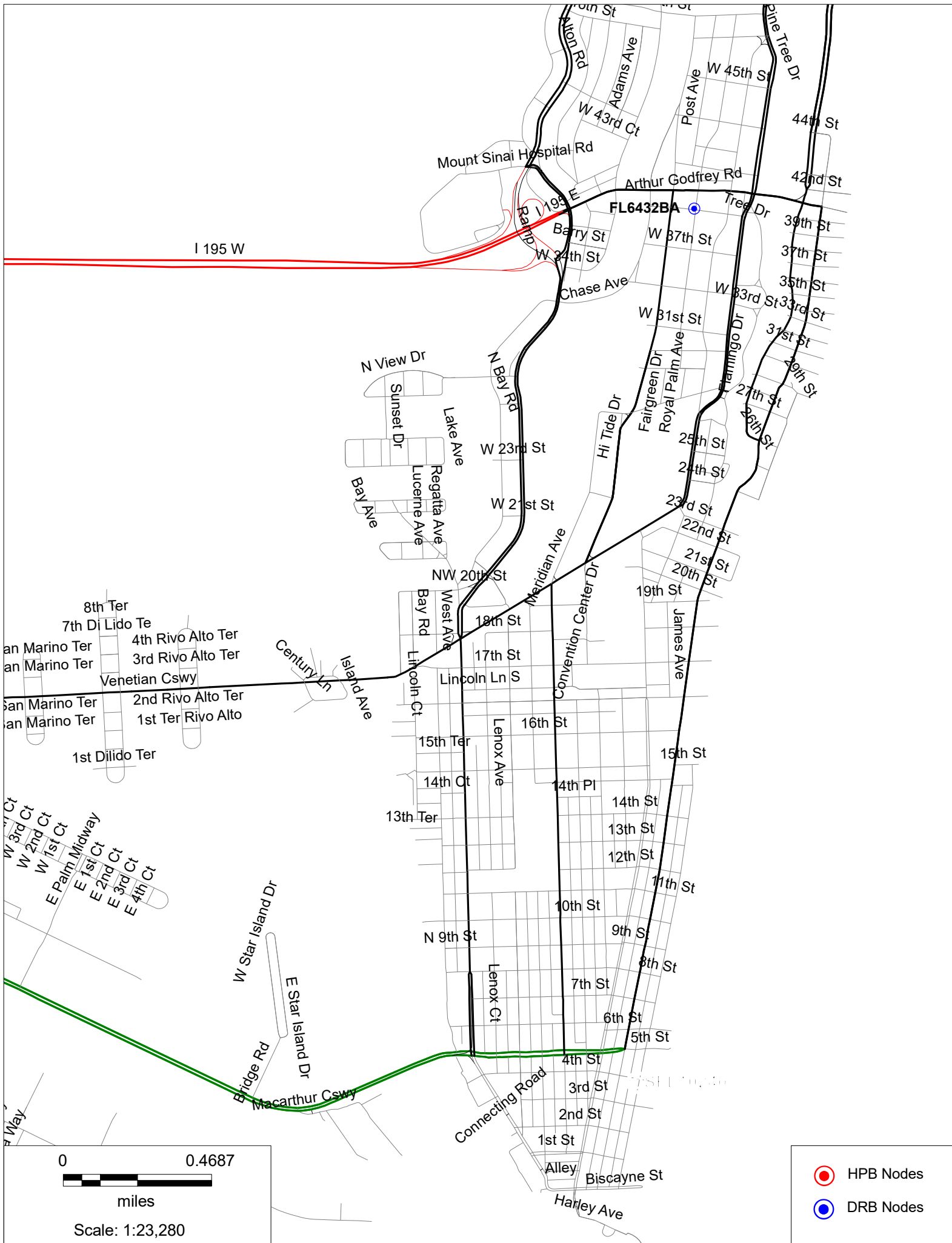
Handwritten signature and date: 7.24.19

FL6432BA

Aerial View

3792 Royal Palm Ave., Miami Beach, FL 33140













FL6432BA

3792 Royal Palm Ave., Miami Beach, FL 33140

Proposed Front view



FL6432BA

3792 Royal Palm Ave., Miami Beach, FL 33140

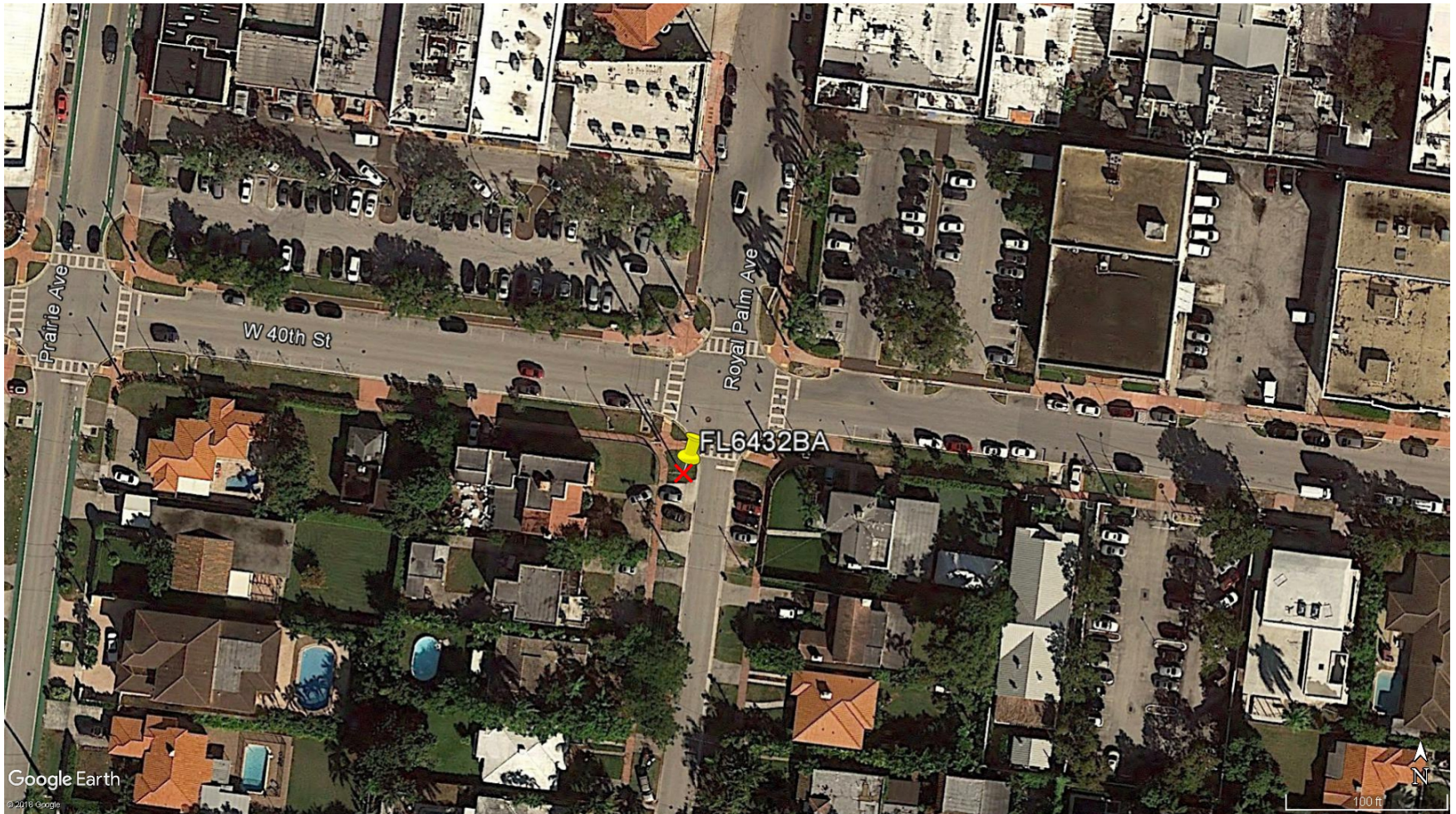
Proposed Side view



FL6432BA

Aerial View

3792 Royal Palm Ave., Miami Beach, FL 33140



FL6432BA

3792 Royal Palm Ave., Miami Beach, FL 33140

North



FL6432BA

East

3792 Royal Palm Ave., Miami Beach, FL 33140



FL6432BA

South

3792 Royal Palm Ave., Miami Beach, FL 33140



FL6432BA

3792 Royal Palm Ave., Miami Beach, FL 33140

West

