

[STRANG]

2900 SW 28TH TERRACE, SUITE 301
MIAMI, FL 33133

PH: 305-373-4990 | FX: 305-373-4991
FIRM LICENSE # AA26001123
WWW.STRANG.DESIGN

PROJECT LOCATION:
220 W DILIDO DR
MIAMI BEACH, FL 33139, USA

PROJECT CLIENT(S) / OWNER(S):
MAESTRIA REAL ESTATE

ARCHITECT:
MAX WILSON STRANG, FAIA
LICENSE # AR0017183
2900 SW 28TH TERRACE, SUITE 301
MIAMI, FL 33133
STRUCTURAL ENGINEERING:
TBD
MEP ENGINEERING:
TBD
LANDSCAPE ARCHITECT:
Enea Garden Design Inc.
7580 NE 4th Court, Studio 105
Miami, Florida 33138, USA
T+1 305.576.6702 | F+1 305.576.6703
REG.No: LC26000339
CIVIL ENGINEER:
TBD

PROJECT NAME:
220 WEST DILIDO

PROFESSIONAL SEAL(S):

FOR THE FIRM:
Gerardo Javier Delgado
R.L.A. 0001574

	08/05/19	DRB SUBMITTAL
No.	DATE	DESCRIPTION

SHEET ISSUE / REVISION LOG

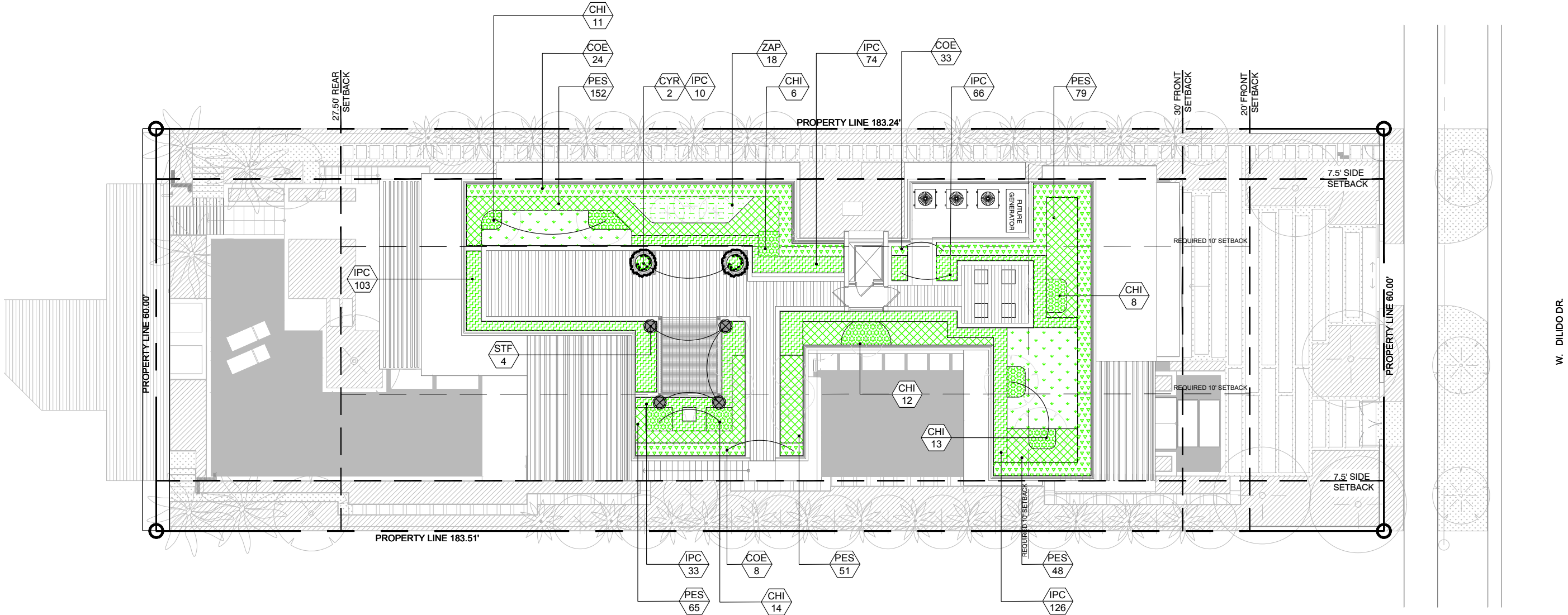
CONFIDENTIALITY NOTICE:
The drawing and information contained within is property of Strang Design, LLC. and is intended only for the parties identified above or of governmental position(s). This plan may not be reproduced without written permission from the Project Manager assigned to this project.
© 2018- STRANG DESIGN, LLC.

Project ID: SOCRI RES.	Drawn By: CAL
Print Date: 07/8/2019	Scale: AS INDICATED

Sheet Title:
UNDERSTORY PLAN
ROOF TOP

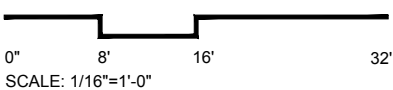
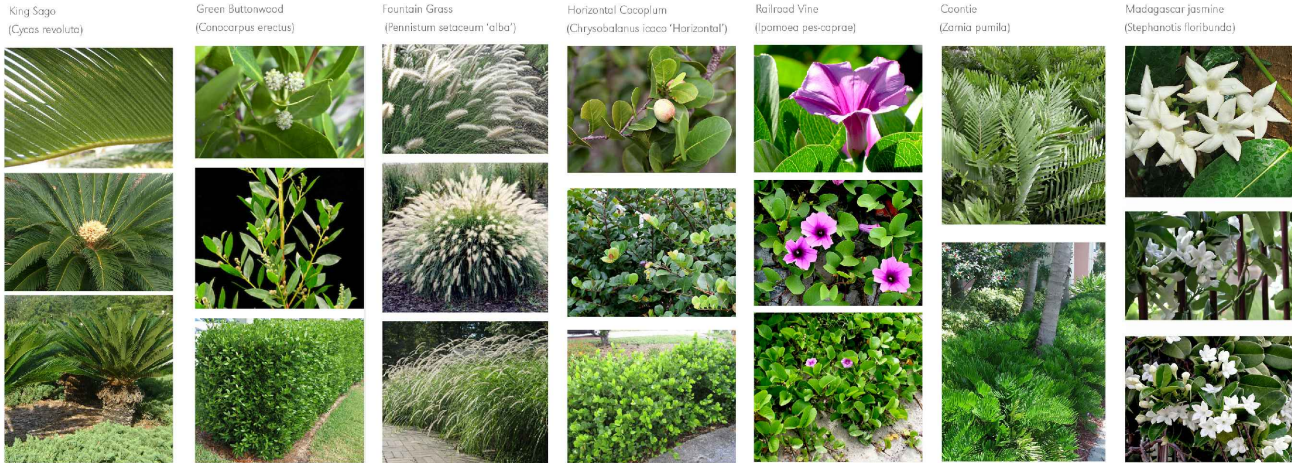
Sheet No:

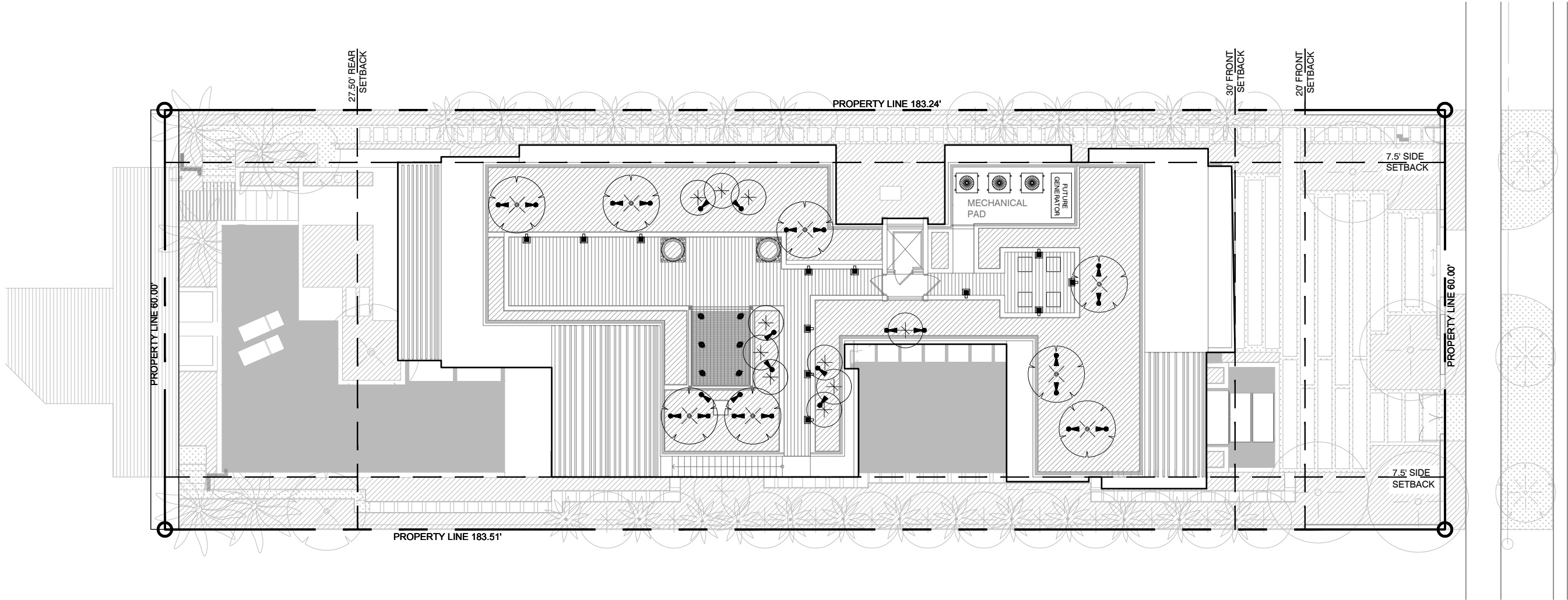
L3-501



220 WEST DILIDO DRIVE -UNDERSTORY ROOFTOP SCHEDULE

SYM	QTY	SCIENTIFIC NAME	COMMON NAME	MINIMUM SPECIFICATIONS	NOTES	NATIVE
PROPOSED ACCENTS						
CYR	2	<i>Cycas revoluta</i>	King Sago	7G; 2' HT.; 2' SP		N
PROPOSED SHRUBS						
CHI	64	<i>Chrysobalanus icaco 'Horizontal'</i>	Horizontal Cocoplum	7G 18" HT.; 18" SP.; 18" O.C.		Y
COE	65	<i>Conocarpus erectus</i>	Green Buttonwood	15G; 5'-6' HT.; 2'-3' SP.; 30" O.C.	Full to Base	Y
IPC	417	<i>Ipomoea pes-caprae</i>	Railroad Vine	1G; 12" HT.; 12" SP.; 12" O.C.	Full to Base	Y
PES	395	<i>Pennisetum setaceum 'alba'</i>	Fountain Grass	3G; 24" HT.; 24" SP.; 12" O.C.		N
ZAP	18	<i>Zamia Pumila</i>	Coontie	15G; 24" HT.; 24" SP.; 24' O.C.	Full to Base	Y
PROPOSED VINES						
STF	4	<i>Stephanotis floribunda</i>	Madagascar jasmine	15G; 5' HT ON TRELLIS	Full to Base	N





W. DILIDO DR.

PROPOSED LANDSCAPE LIGHTING SCHEDULE

	SYM	FIXTURE TYPE	QTY	BRAND	MODEL #	MOUNTING TYPE	FINISH
01		CEILING MOUNT ACCENT DOWN LIGHT	06	BEACHSIDE LIGHTING	SEE L3-701	DOWN LIGHT - PERGOLA	BRASS
02		ACCENT UP LIGHT	26	LUMIERE	SEE L3-701	GROUND STAKE	BRASS
03		WALL LIGHT	12	LUCIFER	SEE L-701	WALL MOUNTED	BLACK

NOTES:
- FIXTURES SUBMITTED FOR CONCEPTUAL DESIGN ONLY.
- FINAL FIXTURES ARE SUBJECT TO CHANGE BASED ON DESIGN REQUIREMENTS OF THE PROJECT.

[STRANG]

2900 SW 28TH TERRACE, SUITE 301
MIAMI, FL 33133

PH: 305-373-4990 | FX: 305-373-4991
FIRM LICENSE # AA26001123
WWW.STRANG.DESIGN

PROJECT LOCATION:
220 W DILIDO DR
MIAMI BEACH, FL 33139, USA

PROJECT CLIENT(S) / OWNER(S):
MAESTRIA REAL ESTATE

ARCHITECT:
MAX WILSON STRANG, FAIA
LICENSE # AR0017183
2900 SW 28TH TERRACE, SUITE 301
MIAMI, FL 33133
STRUCTURAL ENGINEERING:
TBD

MEP ENGINEERING:
TBD

LANDSCAPE ARCHITECT:
Enea Garden Design Inc.
7580 NE 4th Court, Studio 105
Miami, Florida 33138, USA
T+1 305.576.6702 | F+1 305.576.6703
REG.No: LC26000339
CIVIL ENGINEER:
TBD

PROJECT NAME:
220 WEST DILIDO

PROFESSIONAL SEAL(S):

FOR THE FIRM:
Gerardo Javier Delgado
R.L.A. 0001574

	08/05/19	DRB SUBMITTAL
No.	DATE	DESCRIPTION

SHEET ISSUE / REVISION LOG

CONFIDENTIALITY NOTICE:
The drawing and information contained within is property of Strang Design, LLC. and is intended only for the parties identified above or of governmental position(s). This plan may not be reproduced without written permission from the Project Manager assigned to this project.

© 2018- STRANG DESIGN, LLC.

Project ID: SOCRI RES.	Drawn By: CAL
Print Date: 07/8/2019	Scale: AS INDICATED

Sheet Title:

LIGHTING PLAN
ROOF TOP

Sheet No:

L3-700

