

SITE LOCATION
SCALE: N.T.S

RM3 - ZONING DATA SHEET

ITEM #	Zoning Information		
1	Address:	6605 COLLINS AVENUE, MIAMI BEACH, FL. 33141	
2	Board and file numbers:		
3	Folio number(s):	02-3211-007-0410	
4	Year constructed:	N/A	Zoning District: RM-3
5	Base Flood Elevation:	8.0' NGVD	Grade value in NGVD: 4.55'
6	Adjusted grade (Flood+Grade/2):	6.275'	Lot Area (SF): 25,072 S.F.
7	Lot width (FT):	75.33'	Lot Depth (FT): 333.0'
8	Minimum Unit Size(SF):	N/A	Average Unit Size: N/A
9	Existing use:	VACANT	Proposed use: TEMPORARY PARKING LOT

		Maximum	Existing	Proposed	Deficiencies
10	Height:	200'-0" Oceanfronts	N/A		
11	Number of Stories:		N/A		
12	FAR:	2.25 / 56,412 S.F.	N/A	NONE	
13	Gross square footage:		N/A	16,774 S.F.	
14	Square Footage by use:		N/A	16,774 S.F. PARKING SURFACE	
15	Number of units Residential:		N/A		
16	Number of units Hotel:		N/A		
17	Number of seats:		N/A		
18	Occupancy load:	F.B.C TABLE 1004.1.2 MAX. 84 OCC	N/A	MAX. 84	

	Setbacks	Required	Existing	Proposed	Deficiencies
	Subterranean:	N/A			
19	Front Setback:	N/A			
20	Side Setback:	N/A			
21	Side Setback:	N/A			
22	Side Setback facing street:	N/A			
23	Rear Setback:	N/A			
	At Grade Parking:	N/A			
24	Front Setback:	20'-0"		20'-0"	
25	Side Setback:	5'-0" or 5% lot width		5'-8" North	
26	Side Setback:	5'-0" or 5% lot width		11'-8" South	
27	Side Setback facing street:	N/A			
28	Rear Setback:	50'-0" Oceanfronts	16'-8"	16'-8"	33'-4"
	Pedestal:	N/A			
29	Front Setback:	N/A			
30	Side / Interior Setback:	N/A			
31	Side Setback:	N/A			
32	Side Setback facing street:	N/A			
33	Rear Setback:	N/A			
	Tower:	N/A			
34	Front Setback:	N/A			
35	Side Setback:	N/A			
36	Side Setback:	N/A			
37	Side Setback facing street:	N/A			
38	Rear Setback:	N/A			

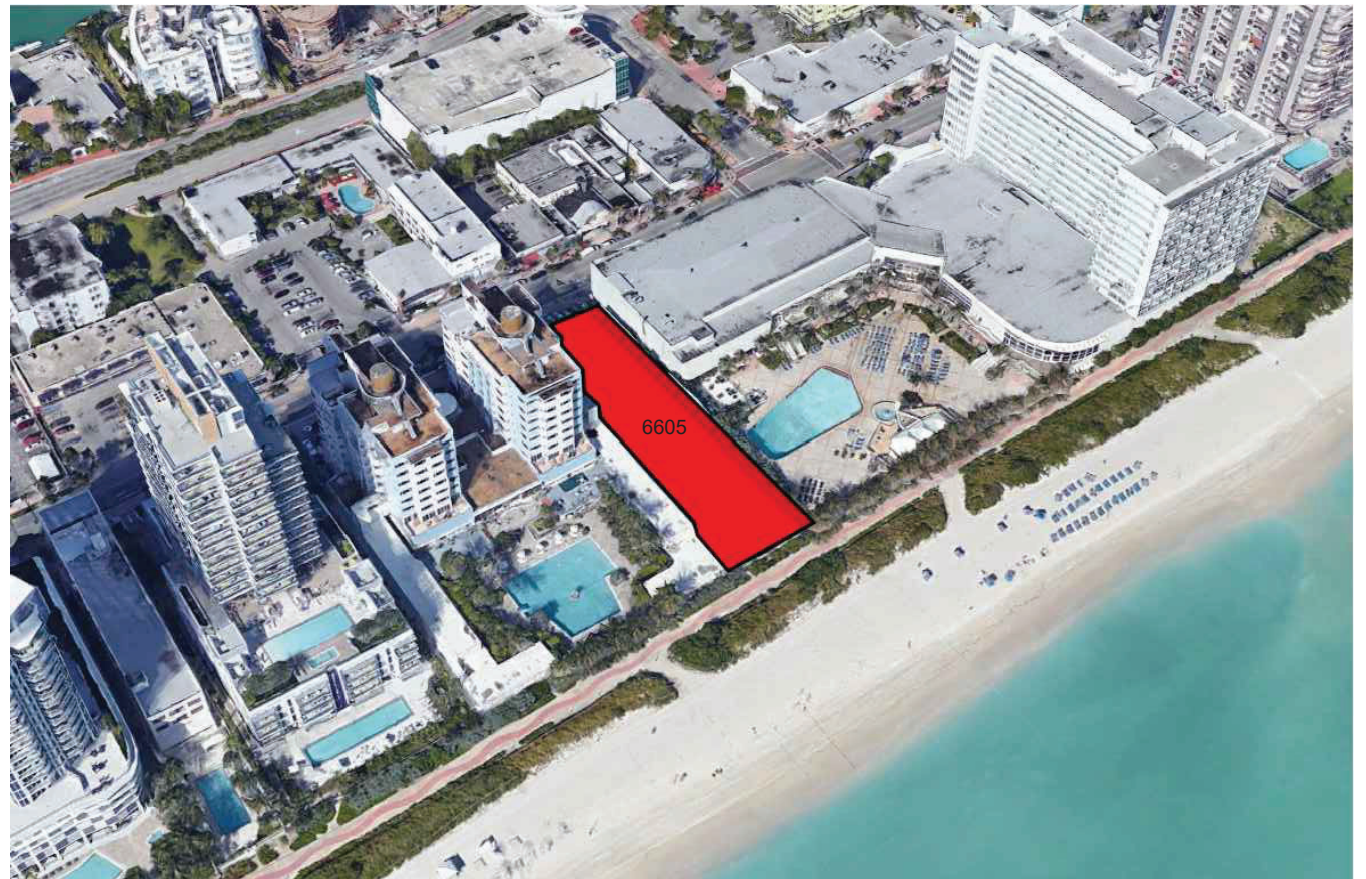
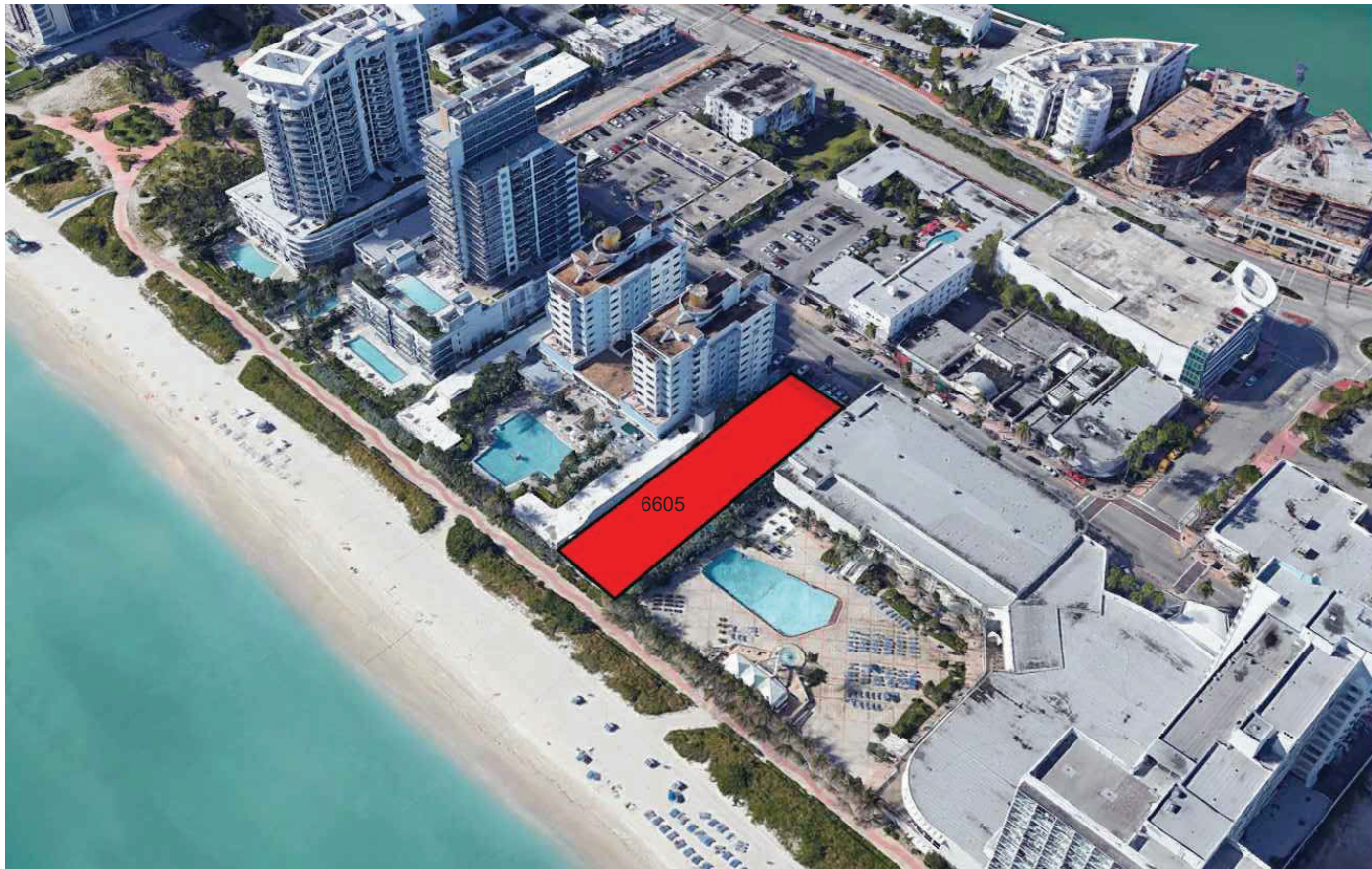
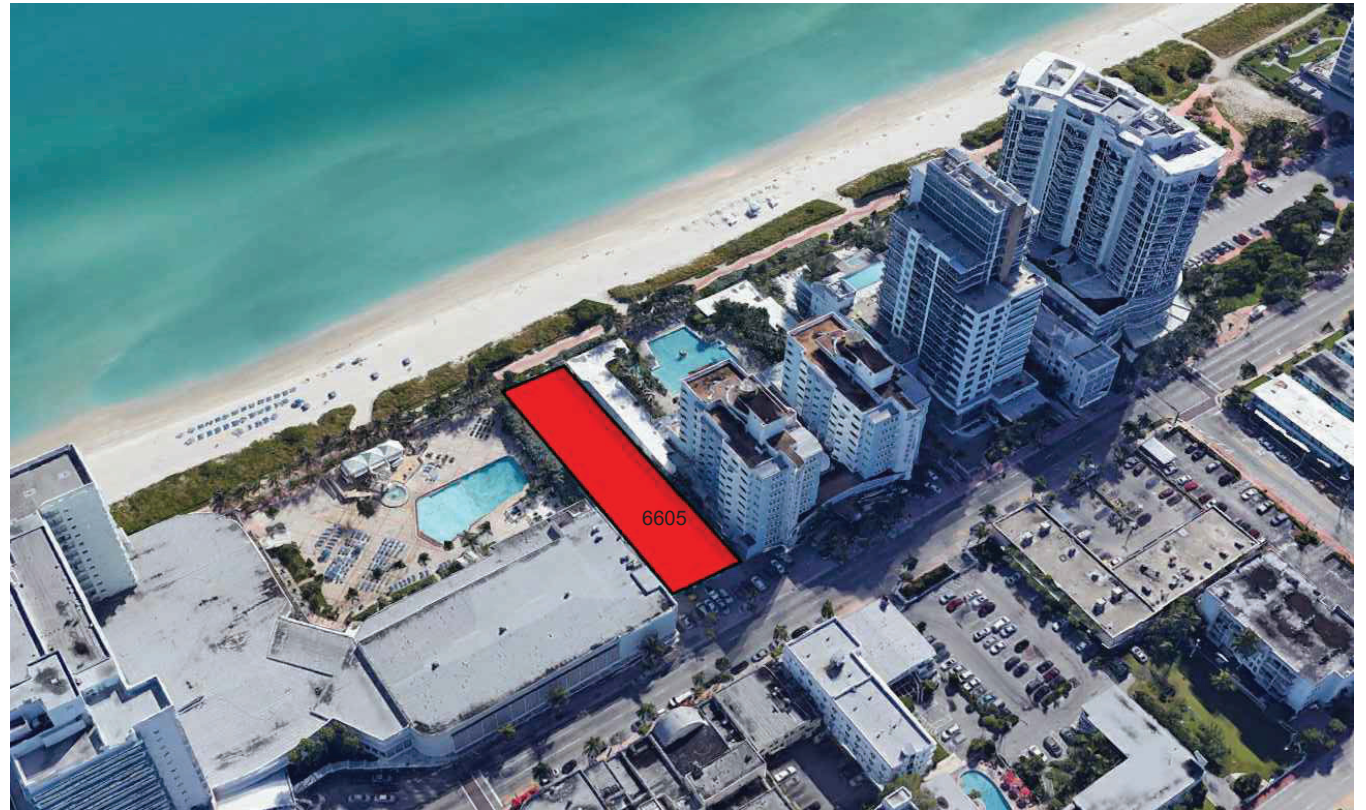
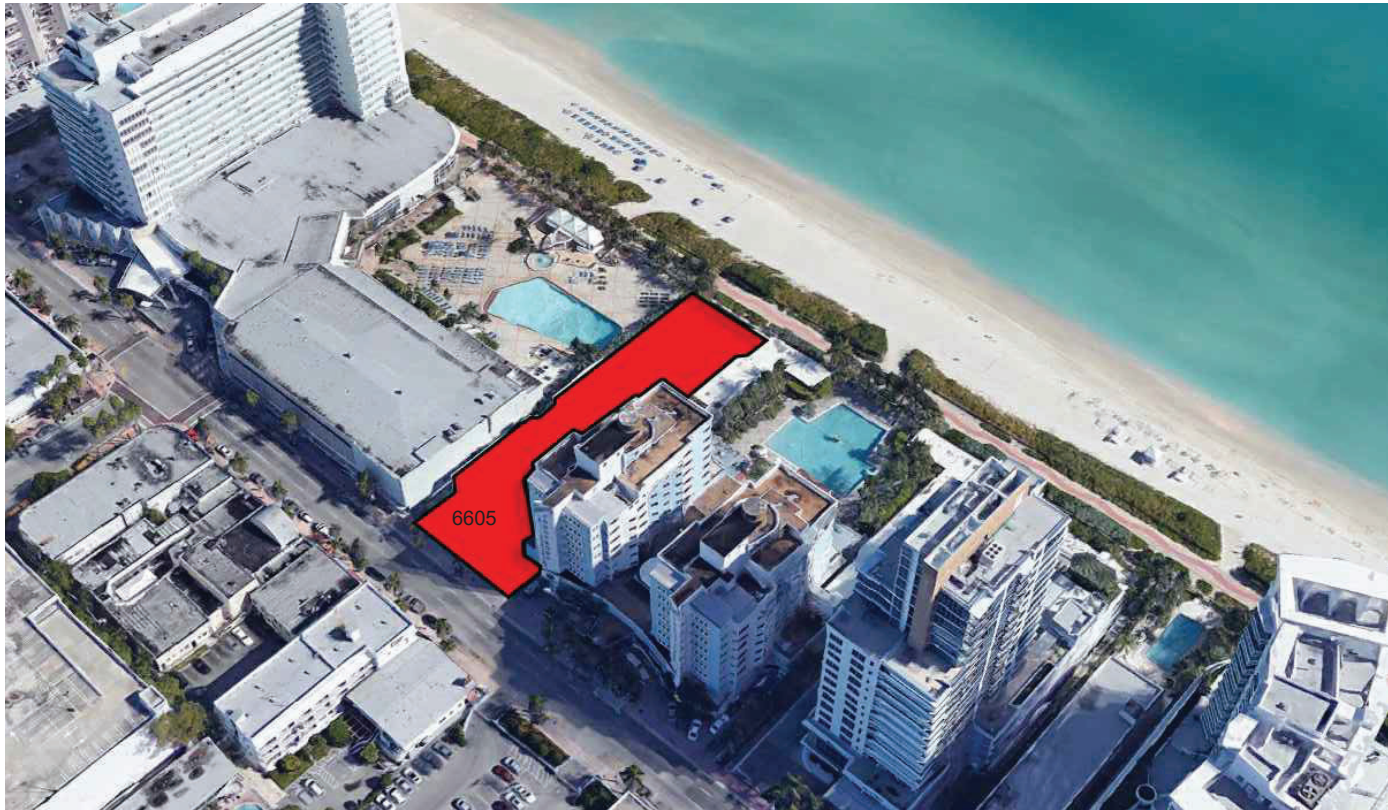
	Parking	Required	Existing	Proposed	Deficiencies
39	Parking District: No. 1				
40	Total # of parking spaces:	N/A		61	
	# of parking hotel rooms	N/A			
41	# of parking bar at lobby	N/A			
	# of parking bar at rooftop	N/A			
42	# of parking spaces per level (Provide a separate chart for a breakdown calculation)	N/A			
43	Parking Space Dimensions:	8'-6" x 18'-0"		8'-6" x 18'-0"	
44	Parking Space configuration (45o,60o,90o,Parallel)			90 degree	
45	ADA Spaces	3		3	
46	Tandem Spaces	N/A			
47	Drive aisle width	22'-0"		22'-0"	
48	Valet drop off and pick up	N/A			
49	Loading zones and Trash collection areas	N/A			
50	Racks	N/A		1	

	Restaurants, Cafes, Bars, Lounges, Nightclubs	Required	Existing	Proposed	Deficiencies
51	Type of use:	N/A			
52	Total # of seats:	N/A			
53	Total # of seats per venue (Provide a separate chart for a breakdown calculation)	N/A			
54	Total occupant load:	N/A			
55	Occupant load per venue (Provide a separate chart for a breakdown calculation)	N/A			

56	Is this a contributing building?	Yes or NO		
57	Located within a Local Historic District?	Yes or NO		

01 ZONING CHART
SCALE: N.T.S

DATE	REVISION
------	----------



6605 COLLINS AVENUE
MIAMI BEACH, FL 33141

DATE _____ REVISION _____

TITLE	
	<i>AERIAL VIEWS</i>

[illegible]

N.T.S.

PROJECT NO. _____

2018-24

09-20-19

NUMBER **A 004**

A-004 ■



SCALE: 1/16"=1'-0"

B6 PAVERS SECTION SCALE: 1" = 1'-0"

A5 WHEEL STOP TYP. DETAIL SCALE: 1" = 1'-0"

6605 COLLINS AVENUE
6605 COLLINS AVENUE
MIAMI BEACH, FL 33141

[illegible]

DWG. TITLE	OVERALL SITE PLAN AND SITE DETAILS
SCALE	AS SHOWN
PROJECT NO.	2018-24
DATE	09-20-19
SHEET NUMBER	A-100

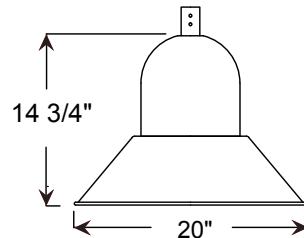




6605 COLLINS LOT

LIGHTING FIXTURE SCHEDULE

TYPE	DESCRIPTION	MFR	CATALOG NUMBER	VOLTS	LAMPS	WATTS	MOUNTING	DIMMING (If Req)	REMARKS
S1-S	LED AMBER STREET LIGHT WITH 180° BACKSHIELD	ANP	BVA2001-P117LD4-D-T3-AMB-HSS180-XX-FINISH (MOUNTED ON VALMONT POLE #0908-30404TE-XX-FINISH)	UNV	LED	117W	10' POLE		NOTE 1, NOTE 2, NOTE 3



Project: _____
 Fixture Type: _____ Quantity: _____
 Customer: _____

Specifications

Material:
 All parts are durable 356 cast aluminum and high strength aluminum spinings. All hardware provided shall be stainless steel or zinc plated steel.

Fixture Mounting:
 Pendant Mount: Pin mount to tenon. Fits 3" and 4" poles.

Drivers:
 Universal voltage 120-277 is standard. 0-10V dimming is standard for LED platforms.

See page 2 for LED engine and driver specifications.

Electrical:
 Approximately 12" of pull wire extends from luminaire. Additional pull wire provided for post mount arms and wall mounts.



Finish:
 A polyester powder coat high quality finish is electro-statically applied and baked at 430° for exceptional durability and color retention. Products undergo an intensive five-step cleansing and pretreatment process for maximum paint adhesion.

Marine grade finish provides superior salt, humidity and UV protection. This coating withstands up to 3000 hours of continuous salt spray, comes with a 5-year warranty and is available in either a textured or gloss surface.

Modifications:
 Consult factory for custom or modified designs.

BVA2001 - LED

Dark Sky Friendly.

Weight: 6.5 lbs

EPA: 0.86

BUG: *See table below

Catalog Logic

BVA2001 **P078LD4** **D** **T5** **40K** - **PC** - **PA1613** - **72**
 Luminaire Series Light Source & Wattage Dimming Optic CCT Accessories Mounting Finish

Catalog Number	1	2	3	4	5	6	7
	BVA2001	D					

1	2	3	4	5	6	7
LIGHT SOURCE & WATTAGES	DIMMING	OPTICS	COLOR TEMPERATURE (CCT)	ACCESSORIES	MOUNTING SOURCE	FINISHES
P029LD4 (29w Platform; 400ma Driver) P046LD4 (46w Platform; 400ma Driver) P078LD4 (78w Platform; 400ma Driver) P117LD4 (117w Platform; 400ma Driver)	D (Dimming) See page 2 table for LED engine and driver specs, voltage and dimming protocols.	T2 (Type II) T3 (Type III) T5 (Type V)	27K (2700K) 30K (3000K) 35K (3500K) 40K (4000K)	HSS90 (90° House Side Shield, polished) HSS120 (120° House Side Shield, polished) 4ST36 (3 Ft, 1 1/4" Ridged Stem & Canopy) PEND-CH3 (3 Ft Pendant Chain & Canopy) *EMG-LED20HV (20w, High Voltage LED Emergency Driver, remote placement, for use with Platforms and Towers, 78w or less) HLMSPC-06 (High-Low Motion Sensor/Photocell; 15' - 30' Sensor Mounting Height) HLMSPC-10 (High-Low Motion Sensor/Photocell; 8' - 15' Sensor Mounting Height) PA-BF (Post Arm Ball Fitter) PA-BFS (Post Arm Ball Fitter w/Swivel) PC (Button Photo Cell) SP (Surge Protector, 10kA & 10kV) TLPC (Twist Lock photo cell & receptacle) TL (Twist Lock receptacle only) TL5 (5-pin Twist Lock receptacle) TL7 (7-pin Twist Lock receptacle) *For Emergency lumen output data, see Resources section at www.ANPlighting.com .	Post Mount Arms *See Page 3 for Style/Size PA0413 PA6213 WM0413 WM5163 PA1613 PA8453 WM1613 WM5603 PA1753 WM1763 PA2023 WM1773 PA2313 WM2313 PA2613 WM3003 PA3113 WM3203 PA3213 WM3553 PA3533 WM4513 PA5153 WM5143 Column Mount *See Page 3 for Style/Size CM Column Mount	Standard Grade Marine Grade 40 NA Raw Unfinished 41 101 Black 42 102 Forest Green 43 114 Bright Red 44 107 White 45 112 Bright Blue 46 123 Sunny Yellow 47 120 Aqua Green 49 NA Galvanized 50 111 Navy 51 103 Architectural Bronze 52 104 Patina Verde 12 133 Lilac Standard Grade Marine Grade 53 100 Copper Clay 56 109 Silver 61 106 Black Verde 70 118 Painted Chrome 71 105 Painted Copper 72 108 Textured Black 73 125 Matte Black 76 121 Textured Architectural Bronze 77 127 Textured White 78 124 Textured Silver 10 130 Aspen Green 11 131 Cantaloupe 13 132 Putty Consult factory for additional paint charges and availability

*BUG RATING TABLE

B1-U0-G1	P046LD4NT340K
B1-U0-G1	P046LD4NT540K
B3-U0-G1	P078LD4NT340K
B2-U0-G2	P078LD4NT540K
B3-U0-G2	P117LD4NT340K
B4-U0-G2	P117LD4NT540K

Project: _____
 Fixture Type: _____ Quantity: _____
 Customer: _____

LED PERFORMANCE

PLATFORM

LED Wattage	CCT	Typical Luminous Flux	System Wattage	Typical Efficacy
29W	2700K	2670	30w	89
	3000K	2670	30w	89
	3500K	3209	30w	107
	4000K	3465	30w	116
46W	2700K	4004	46w	87
	3000K	4004	46w	87
	3500K	4814	46w	105
	4000K	5197	46w	115
78W	2700K	7041	80w	88
	3000K	7041	80w	88
	3500K	8464	80w	106
	4000K	9138	80w	114
117W	2700K	10561	120w	88
	3000K	10561	120w	88
	3500K	12696	120w	106
	4000K	13707	120w	114

PLATFORM SPECIFICATION:

- Efficacy ranges from 80-116 lumens per watt
- Customized lens precisely directs the light
- Operating temperature of -30C to 55C
- Life: L70 is 60,000 hours
- PLATFORM CCT: 2700K, 3000K, 3500K, and 4000K
- TOWER CCT: 4000K
- CRI: >70
- Parallel circuitry ensures consistent light output in the event of single LED failure

PLATFORM LISTINGS

- Fully compliant with the RoHS Directive
- Certifications: ETL
- Rated IP65 with an optional IP66 rating

PLATFORM DRIVER SPECIFICATION:

- Operates at 400mA
- Dimmable down to 10%
- Built in surge protection
- Constant current output 50/60HZ
- Driver Efficiency > 90% power factor above 99%
- 120 – 277 volts
- 0-10V dimming protocol is standard

WARRANTY

See www.ANPLighting.com for complete fixture warranty.

LED warranty information

- 7 year limited warranty* on Platform LED engines
- 5 year limited warranty* on Platform Drivers

*Limited Warranty: A typical year is defined as 4380 hours of operation. Failure defined as more than 10% of the total platform LED's not operating.

ACCESSORIES



HSS90 & HSS120



4ST36



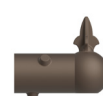
PEND-CH3



EMG-LED20HV



HLMSPC-06 & HLMSPC-10



PA-BF



PA-BFS



PC



TLPC



TL



TL5 & TL7

Project: _____
 Fixture Type: _____ Quantity: _____
 Customer: _____

POST MOUNTS | See Post Arm Section on Website for Specification Sheets and additional post arms.



PA0413 28" x 38 3/8"



PA1613 26 1/2" x 55 1/8"



PA1753 26 1/8" x 36 3/4"



PA2023 21 1/4" x 16"



PA2313 24" x 28 1/2"



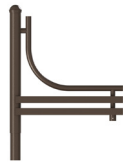
PA2613 39 1/2" x 46"



PA3113 25" x 15 1/4"



PA3213 21 7/8" x 26 1/8"



PA3533 29" x 38 1/2"



PA5153 14 1/4" x 19 3/4"



PA6213 22 3/4" x 26 1/2"



PA8453 70" x 37 1/2"

COLUMN MOUNT



CM 5 3/4" SQ x 3 1/2" H

WALL MOUNTS | See Wall Mount Section on Website for Specification Sheets and additional wall mount arms.



WM0413 26 1/2" x 38 5/8"



WM1613 28 3/8" x 57"



WM1763 28 3/4" x 42"



WM1773 20" x 30"



WM2313 23" x 31 7/8"



WM3003 11" x 8 7/8"



WM3203 18" x 24"



WM3553 28 1/4" x 36 1/2"



WM4513 17" x 8"



WM5143 14 3/4" x 16 1/2"

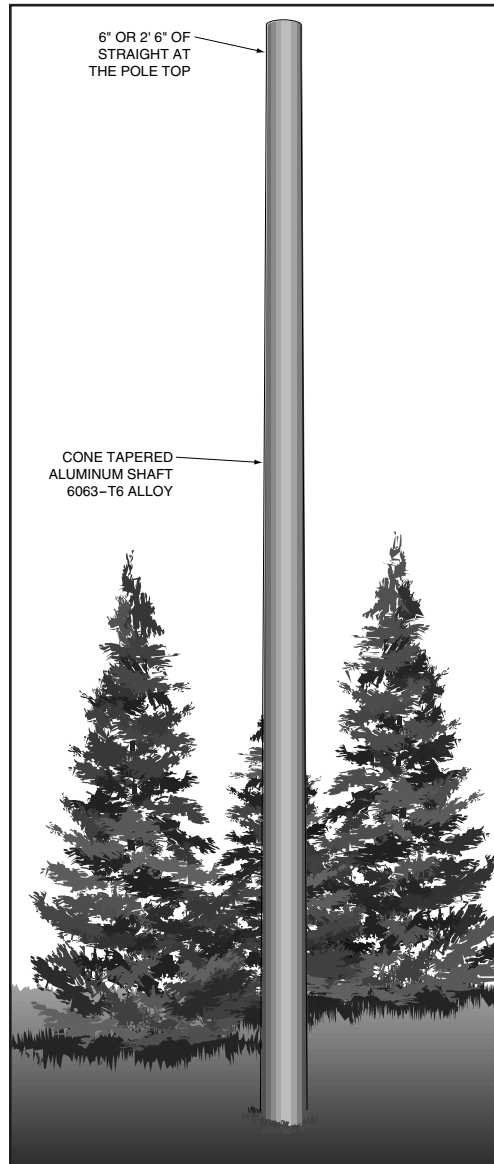


WM5163 15 3/4" x 13 3/4"



WM5603 17 7/8" x 14"

8' TO 30' ROUND TAPERED EMBEDDED (DIRECT BURIAL) POLES



- 8' to 30' mounting heights.
- Tenons, brackets, and arms designed for single or multiple luminaire mounting.
- Luminaires may be mounted on tenons, brackets or shaft may be drilled to manufacturer's mounting specifications.

SPECIFICATIONS

All aluminum alloys shall comply with metallurgical and mechanical properties set forth in the Aluminum Association Standards.

Shaft: The shaft shall be spun tapered from all new seamless 6063 alloy aluminum tubing and shall be heat treated to produce a T6 temper. Each shaft shall have a minimum of 6" straight length at the top. Top straight section serves as a slipfitter for a luminaire or for the hub of the appropriate Valmont bracket or tapered arm. Alternatively, the straight section may be drilled for mounting luminaires. The shaft shall be cone tapered to the base diameter. All Valmont shafts shall be polished with fine grain aluminum oxide cloths, resulting in a high quality circumferential satin brushed finish. After finishing, each pole shall be wrapped for protection in shipment.

Direct Embedment: Unless otherwise specified, the length of the embedded section of a 4" diameter shaft shall be 3', 5" and 6" shall be 4', 7" and 8" shall be 5'. A 1-1/2" diameter grommetted wire inlet hole located 1' 6" below grade shall be included. The embedded section of the pole shall be coated inside and outside with zinc rich paint.

Special Finishes: Natural anodize, duranodic, or painted finishes may be specified as an addition to the satin brushed finish, if required. All aluminum parts and accessories shall receive a finish similar to that specified.

Ground Lug: Each pole shall include a 5/16"-18 tapped provision for ground connector.

Handhole: Available as an option.

Anti-Rotation Device: Available as an option.

CATALOG LOGIC

Feet and Inches	Top Diameter	Base Diameter	Wall Thickness	Shape of Shaft	Base or Mounting	Fixture Mounting	Finishes	Options
<input type="text"/>	<input type="text"/>	<input type="text"/>	<input type="text"/>	<input type="text"/>	<input type="text"/>	<input type="text"/>	<input type="text"/>	<input type="text"/>

Feet & Inches*	Diameter*	Wall Thickness*	Shape of Shaft	Base or Mounting	Fixture Mounting	Finishes	Options
0708 - 8'	TOP DIAMETER IN INCHES	THICKNESS IN 32NDS OF AN INCH	T - Tapered Round	E - Embedded	D1 - 1@90° D2 - 2@180° D3 - 3@120° D4 - 4@90° D5 - 2@90° D6 - 3@90° P2 - 2-3/8" x 4 Tenon P9 - Other Tenon (Please Specify)	POLYESTER POWDER DBL - Black DCG - Charcoal Gray DMB - Med Bronze DSB - Steel Blue DTG - Dark Green SC - Special Color (Please Specify) ANODIZED 204 - Clear Natural 312 - Med Bronze* 335 - Black* BRUSHED SBF - Satin Brushed Finish	DBR - Bright Red DDB - Dark Bronze DNA - Natural Alum DSS - Sandstone DWH - White 311 - Light Bronze* 313 - Dark Bronze* * Duranodic Anodize See Accessory Section (Please Specify with Code #)
0908 - 10'	30 - 3"	4 - 4/32" or 0.125" Wall					
1108 - 12'	40 - 4"	5 - 5/32" or 0.156" Wall					
1308 - 14'	45 - 4-1/2"	6 - 6/32" or 0.188" Wall					
1508 - 16'	BASE DIAMETER* IN INCHES						
1708 - 18'	40 - 4"						
1908 - 20'	50 - 5"						
2408 - 25'	60 - 6"						
2908 - 30'	70 - 7" 80 - 8"						

* For available Base Diameter, Wall Thickness and Length Combinations, see Dimensional Load Data Table that follows.

Customer Approval:

signature

date

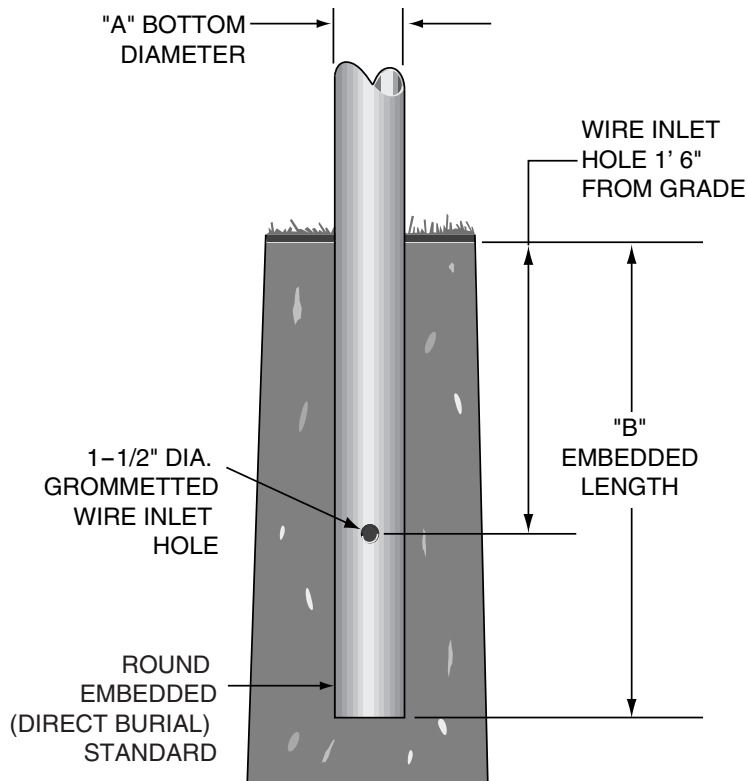
Job Name: _____ Quote: _____

Client Name: _____

Created By: _____ Date: _____

8' TO 30' ROUND TAPERED EMBEDDED (DIRECT BURIAL) POLES

ANCHOR BASE AND BOLT DETAIL



A
BOTTOM DIAMETER
4"
5"
6"
7"
8"

B*
EMBEDDED LENGTH
3'
4'
4'
5'
5'

* 5' minimum embedded length for Canadian market.

DIMENSIONAL AND LOAD DATA

TYPICAL WEIGHT AND ALLOWABLE SIZE OF LUMINAIRES*							DIMENSIONS OF POLES					
NOMINAL MOUNTING HEIGHT	TYPICAL LUMINAIRE WEIGHT (LBS.)	EFFECTIVE PROJECTED AREA IN SQUARE FEET AT:					EXPOSED HEIGHT	OVERALL SHAFT LENGTH	TOP	BASE	WALL	MODEL NUMBER **
		70 MPH	80 MPH	90 MPH	100 MPH	110 MPH						
8'	75	19.1	14.4	11.1	8.8	7.1	7'8"	10'8"	3"	4"	.125"	0708- 30404TE
10'	75	14.3	10.6	8.1	6.3	5.0	9'8"	12'8"	3"	4"	.125"	0908- 30404TE
12'	75	11.0	8.0	6.0	4.5	3.5	11'8"	14'8"	3"	4"	.125"	1108- 30404TE
12'	75	18.5	13.8	10.5	8.3	6.6	11'8"	15'8"	3"	5"	.125"	1108- 30504TE
14'	75	8.5	6.0	4.4	3.2	2.4	13'8"	16'8"	3"	4"	.125"	1308- 30404TE
14'	75	14.8	10.8	8.2	6.3	5.0	13'8"	17'8"	3"	5"	.125"	1308- 30504TE
16'	75	7.1	5.0	3.5	2.4	1.7	15'8"	18'8"	3"	4"	.125"	1508- 30404TE
16'	75	12.0	8.6	6.4	4.8	3.8	15'8"	19'8"	3"	5"	.125"	1508- 30504TE
16'	75	15.3	11.1	8.4	6.5	5.1	15'8"	19'8"	3"	5"	.156"	1508- 30505TE
18'	75	9.7	6.7	4.9	3.6	2.7	17'8"	21'8"	3"	5"	.125"	1708- 30504TE
18'	150	12.2	8.7	6.4	4.9	3.8	17'8"	21'8"	3"	5"	.156"	1708- 30505TE
18'	150	19.1	14.1	10.8	8.5	6.9	17'8"	21'8"	4"	6"	.156"	1708- 40605TE
20'	75	8.2	5.5	3.8	2.6	1.9	19'8"	23'8"	3"	5"	.125"	1908- 30504TE
20'	75	10.4	7.2	5.1	3.7	2.8	19'8"	23'8"	3"	5"	.156"	1908- 30505TE
25'	150	10.5	7.1	5.1	3.8	2.9	24'8"	28'8"	4"	6"	.156"	2408- 40605TE
25'	150	13.5	9.4	6.9	5.3	4.2	24'8"	28'8"	4"	6"	.188"	2408- 40606TE
30'	150	11.1	7.5	5.3	4.0	3.0	29'8"	34'8"	4"	7"	.156"	2908- 40705TE
30'	150	16.7	12.0	9.1	7.0	5.5	29'8"	34'8"	4.5"	8"	.156"	2908- 45805TE

* EPA calculations are based on a 1.3 Gust Factor. Variations from sizes listed above, available upon inquiry at the factory. Satisfactory performance of lighting poles is dependent upon the pole being properly attached to a supporting foundation of adequate design. Valmont does not design or offer recommendations for foundations.

** Model number does not include mounting options or finish designation.

SPC7073 08/07 www.valmontstructures.com carries the most current spec. information and supersedes these guidelines.